

Data Path : Z:\pestpcbsrv\HPCHEM1\ECD_L\Data\PL013025\
 Data File : PL093888.D
 Signal(s) : Signal #1: ECD1A.ch Signal #2: ECD2B.ch
 Acq On : 30 Jan 2025 13:53
 Operator : AR\AJ
 Sample : PSTDCCC050
 Misc :
 ALS Vial : 4 Sample Multiplier: 1

Instrument :
 ECD_L
 ClientSampleId :
 PSTDCCC050

Integration File signal 1: autoint1.e
 Integration File signal 2: autoint2.e
 Quant Time: Jan 31 01:29:26 2025
 Quant Method : Z:\pestpcbsrv\HPCHEM1\ECD_L\methods\PL012125.M
 Quant Title : GC Extractables
 QLast Update : Tue Jan 21 14:58:05 2025
 Response via : Initial Calibration
 Integrator: ChemStation

Volume Inj. : 1 µl
 Signal #1 Phase : ZB-MR2 Signal #2 Phase: ZB-MR2
 Signal #1 Info : 30M x 0.32mm x0.5 Signal #2 Info : 30M x 0.32mm x0.25µm

	Compound	RT#1	RT#2	Resp#1	Resp#2	ng/ml	ng/ml

System Monitoring Compounds							
1)	SA Tetrachlo...	3.539	2.774	122.2E6	146.2E6	45.396	44.782
28)	SA Decachlor...	9.056	7.910	101.4E6	171.5E6	48.492	48.945
Target Compounds							
2)	A alpha-BHC	3.995	3.277	173.9E6	223.5E6	45.353	45.705
3)	MA gamma-BHC...	4.328	3.607	164.7E6	211.5E6	44.711	44.602
4)	MA Heptachlor	4.916	3.945	151.6E6	211.3E6	46.251	45.401
5)	MB Aldrin	5.258	4.224	144.8E6	200.7E6	44.254	43.995
6)	B beta-BHC	4.526	3.907	74247789	92327707	46.193	46.223
7)	B delta-BHC	4.773	4.135	157.5E6	211.1E6	44.923	44.426
8)	B Heptachlo...	5.684	4.727	132.1E6	188.0E6	44.427	44.969
9)	A Endosulfan I	6.069	5.097	119.7E6	168.7E6	45.280	43.514
10)	B gamma-Chl...	5.940	4.977	129.0E6	198.4E6	46.267	46.809
11)	B alpha-Chl...	6.019	5.041	129.0E6	195.2E6	46.274	46.630
12)	B 4,4'-DDE	6.193	5.230	117.6E6	192.2E6	48.288	47.936
13)	MA Dieldrin	6.345	5.361	126.4E6	195.8E6	45.519	45.589
14)	MA Endrin	6.574	5.637	108.8E6	167.2E6	46.386	45.277
15)	B Endosulfa...	6.794	5.932	111.4E6	175.0E6	46.224	47.251
16)	A 4,4'-DDD	6.710	5.785	96933638	160.1E6	51.003	50.719
17)	MA 4,4'-DDT	7.024	6.035	93129277	151.6E6	47.224	46.595
18)	B Endrin al...	6.925	6.111	87931802	134.0E6	45.231	43.996
19)	B Endosulfa...	7.159	6.334	103.8E6	167.1E6	45.855	46.847
20)	A Methoxychlor	7.500	6.610	49020147	81226589	46.981	45.425
21)	B Endrin ke...	7.645	6.839	116.4E6	199.2E6	46.156	47.490
22)	Mirex	8.117	7.019	93526168	151.3E6	44.911	44.727
23)	Chlordane-1	0.000	3.749f	0	23299	N.D.	0.187 #
24)	Chlordane-2	5.258f	4.364	144.8E6	6492082	1236.729	44.248 #
25)	Chlordane-3	5.940	4.977	129.0E6	198.4E6	328.764	456.186 #
26)	Chlordane-4	6.019	5.041	129.0E6	195.2E6	274.469	460.779 #
27)	Chlordane-5	0.000	5.932	0	175.0E6	N.D.	1142.641 #

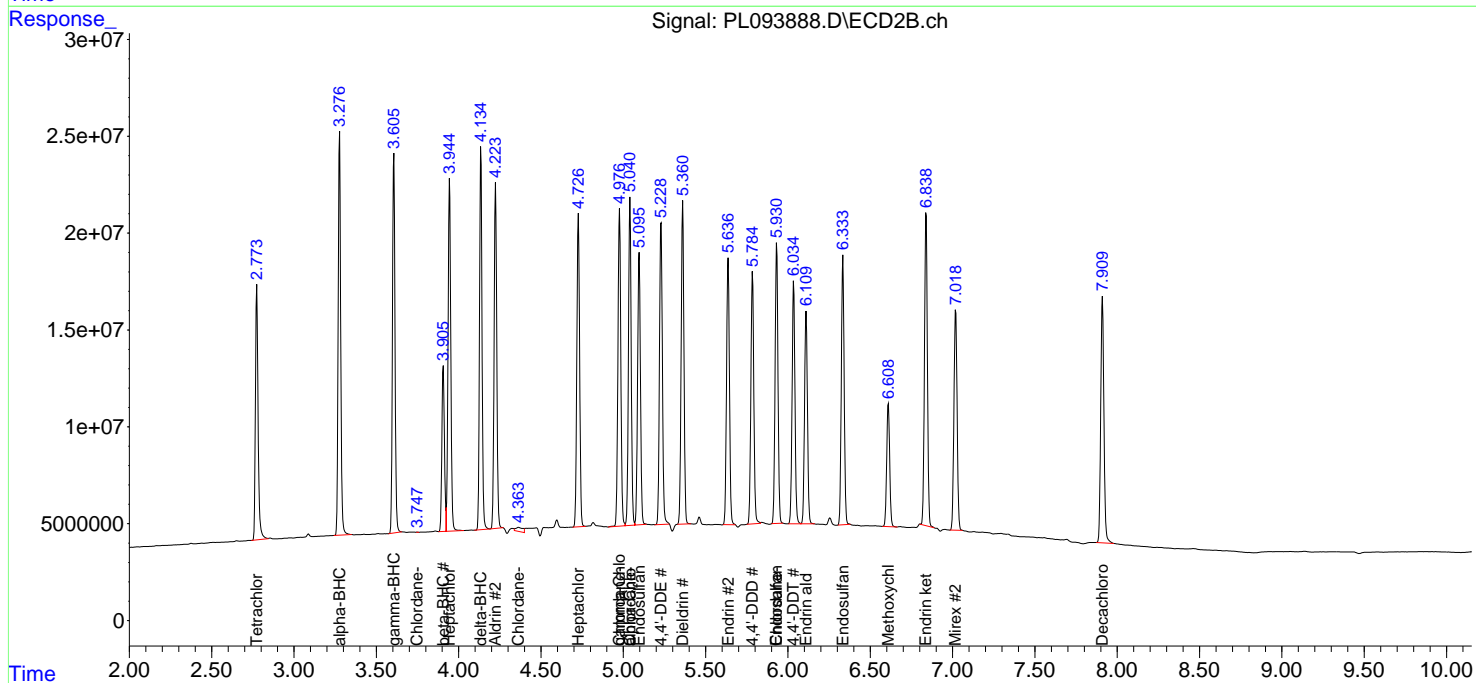
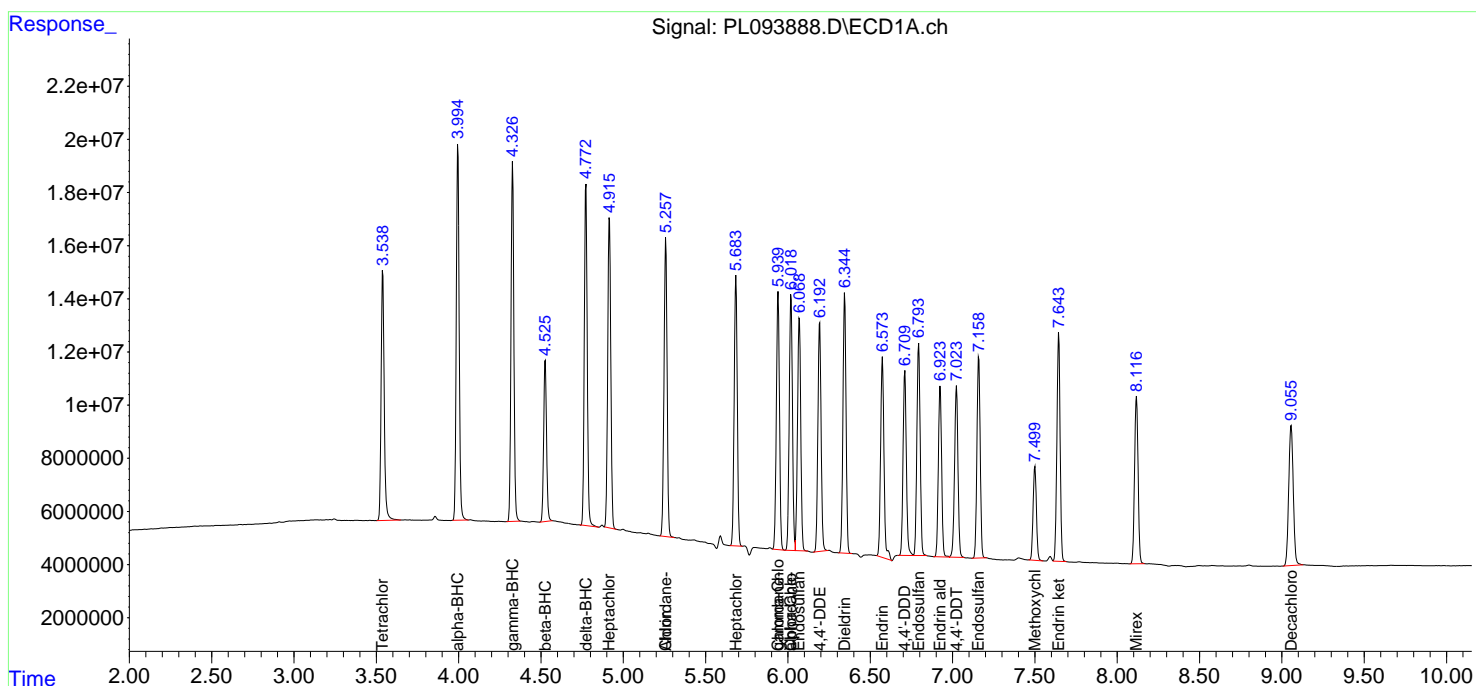
(f)=RT Delta > 1/2 Window (#)=Amounts differ by > 25% (m)=manual int.

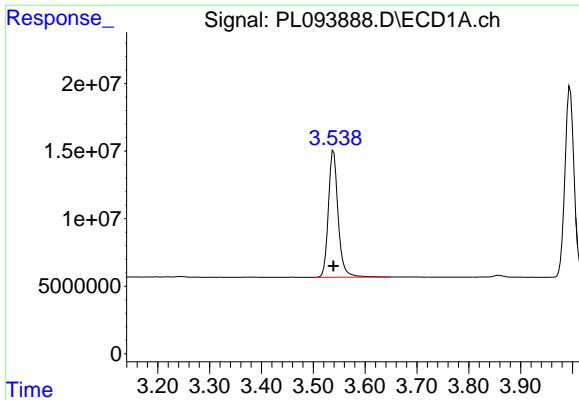
Data Path : Z:\pestpcbsrv\HPCHEM1\ECD_L\Data\PL013025\
 Data File : PL093888.D
 Signal(s) : Signal #1: ECD1A.ch Signal #2: ECD2B.ch
 Acq On : 30 Jan 2025 13:53
 Operator : AR\AJ
 Sample : PSTDCCC050
 Misc :
 ALS Vial : 4 Sample Multiplier: 1

Instrument :
 ECD_L
 ClientSampleId :
 PSTDCCC050

Integration File signal 1: autoint1.e
 Integration File signal 2: autoint2.e
 Quant Time: Jan 31 01:29:26 2025
 Quant Method : Z:\pestpcbsrv\HPCHEM1\ECD_L\methods\PL012125.M
 Quant Title : GC Extractables
 QLast Update : Tue Jan 21 14:58:05 2025
 Response via : Initial Calibration
 Integrator: ChemStation

Volume Inj. : 1 µl
 Signal #1 Phase : ZB-MR1 Signal #2 Phase: ZB-MR2
 Signal #1 Info : 30M x 0.32mm x0.5 Signal #2 Info : 30M x 0.32mm x0.25µm

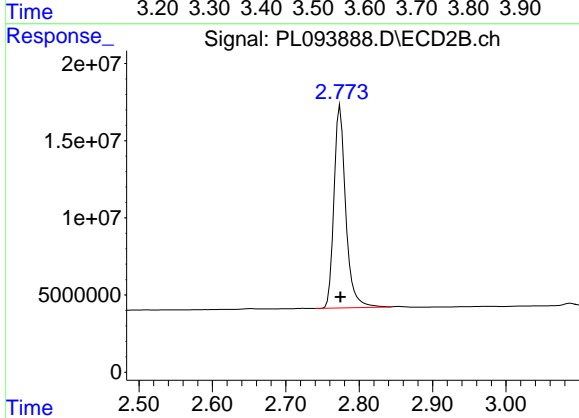




#1 Tetrachloro-m-xylene

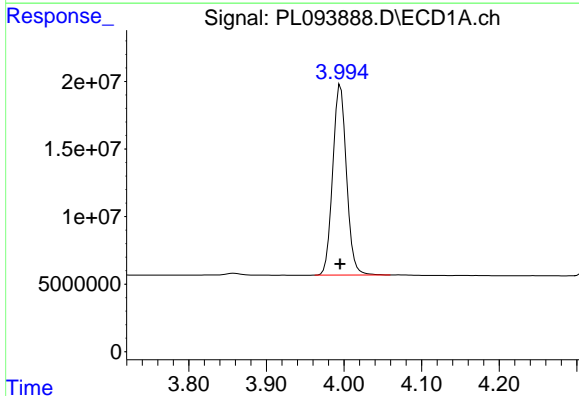
R.T.: 3.539 min
 Delta R.T.: 0.000 min
 Response: 122240014
 Conc: 45.40 ng/ml

Instrument :
 ECD_L
 ClientSampleId :
 PSTDCCC050



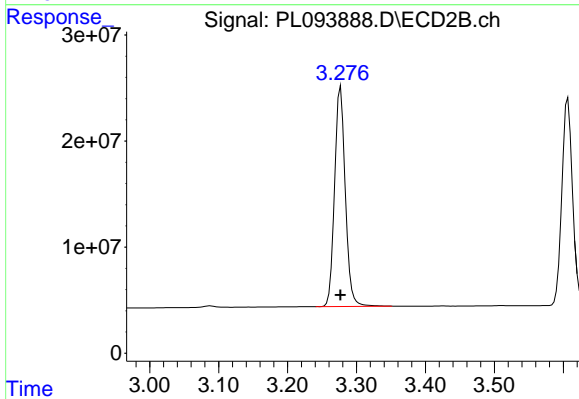
#1 Tetrachloro-m-xylene

R.T.: 2.774 min
 Delta R.T.: 0.000 min
 Response: 146173832
 Conc: 44.78 ng/ml



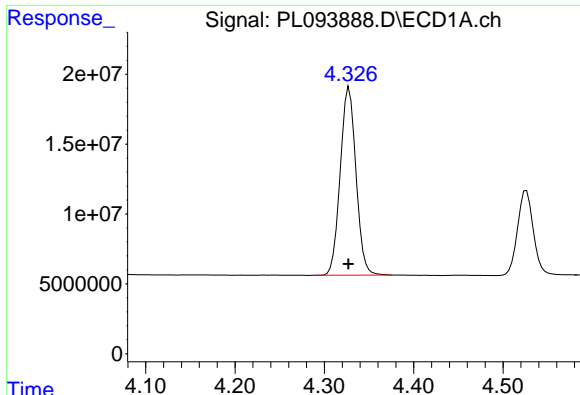
#2 alpha-BHC

R.T.: 3.995 min
 Delta R.T.: 0.000 min
 Response: 173874671
 Conc: 45.35 ng/ml



#2 alpha-BHC

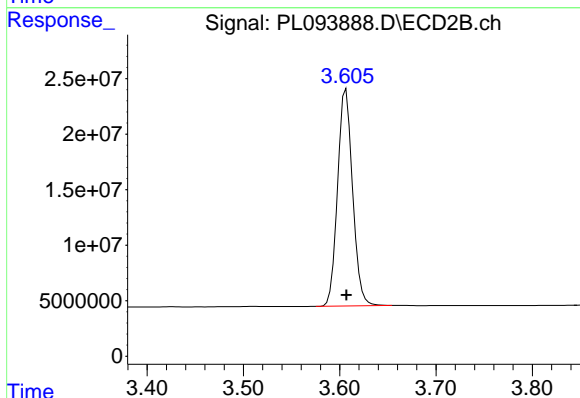
R.T.: 3.277 min
 Delta R.T.: 0.000 min
 Response: 223451577
 Conc: 45.71 ng/ml



#3 gamma-BHC (Lindane)

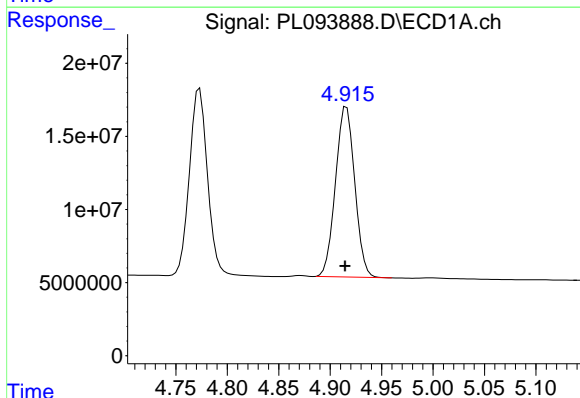
R.T.: 4.328 min
 Delta R.T.: 0.000 min
 Response: 164665457
 Conc: 44.71 ng/ml

Instrument :
 ECD_L
 ClientSampleId :
 PSTDCCC050



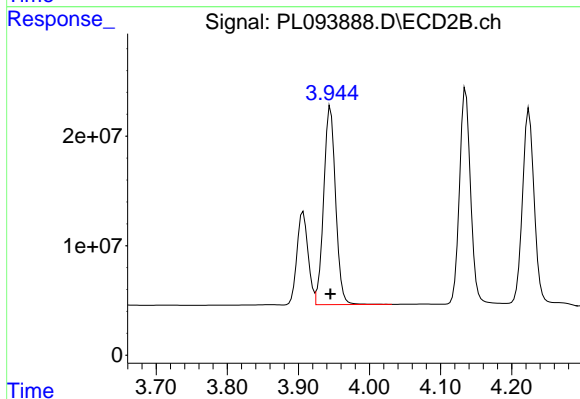
#3 gamma-BHC (Lindane)

R.T.: 3.607 min
 Delta R.T.: 0.000 min
 Response: 211467515
 Conc: 44.60 ng/ml



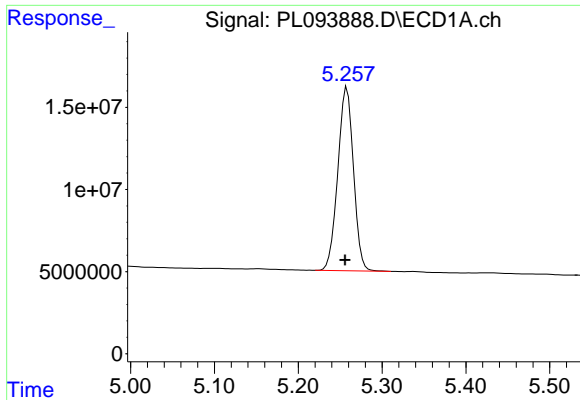
#4 Heptachlor

R.T.: 4.916 min
 Delta R.T.: 0.001 min
 Response: 151579360
 Conc: 46.25 ng/ml



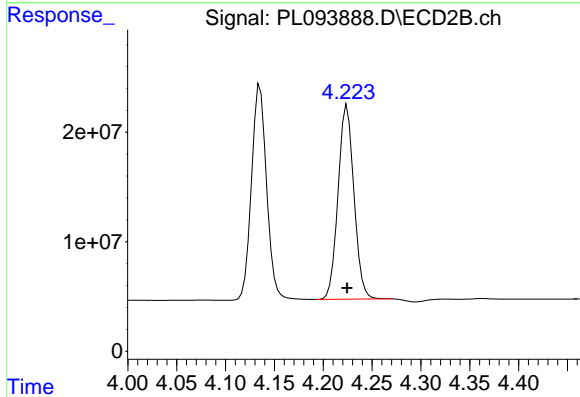
#4 Heptachlor

R.T.: 3.945 min
 Delta R.T.: 0.000 min
 Response: 211331561
 Conc: 45.40 ng/ml

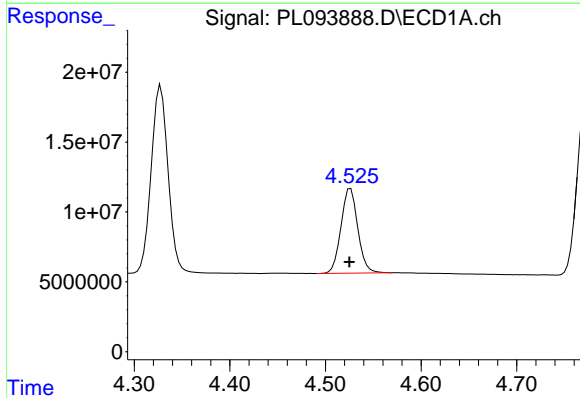


#5 Aldrin
 R.T.: 5.258 min
 Delta R.T.: 0.002 min
 Response: 144797038
 Conc: 44.25 ng/ml

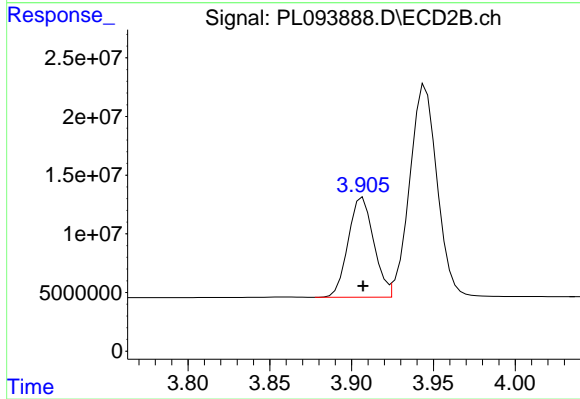
Instrument :
 ECD_L
 ClientSampleId :
 PSTDCCC050



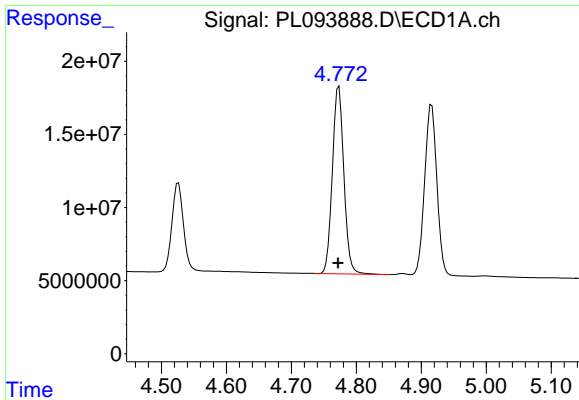
#5 Aldrin
 R.T.: 4.224 min
 Delta R.T.: 0.000 min
 Response: 200695359
 Conc: 43.99 ng/ml



#6 beta-BHC
 R.T.: 4.526 min
 Delta R.T.: 0.001 min
 Response: 74247789
 Conc: 46.19 ng/ml



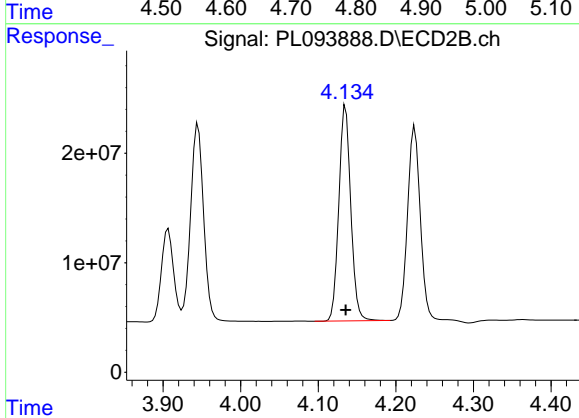
#6 beta-BHC
 R.T.: 3.907 min
 Delta R.T.: 0.000 min
 Response: 92327707
 Conc: 46.22 ng/ml



#7 delta-BHC

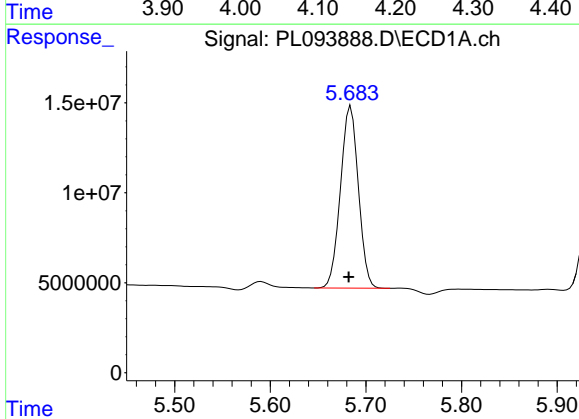
R.T.: 4.773 min
 Delta R.T.: 0.001 min
 Response: 157466613
 Conc: 44.92 ng/ml

Instrument :
 ECD_L
 ClientSampleId :
 PSTDCCC050



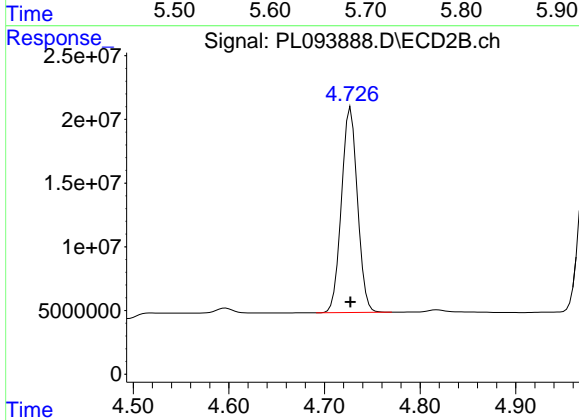
#7 delta-BHC

R.T.: 4.135 min
 Delta R.T.: 0.000 min
 Response: 211076319
 Conc: 44.43 ng/ml



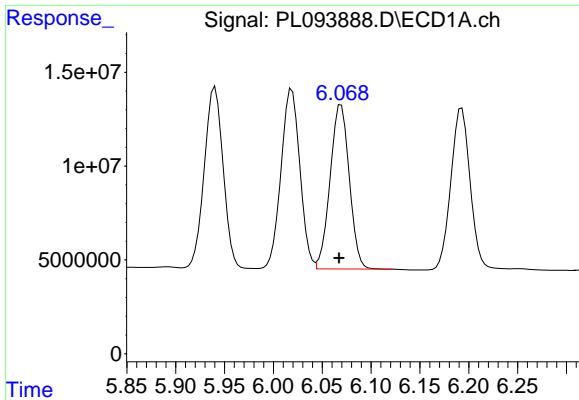
#8 Heptachlor epoxide

R.T.: 5.684 min
 Delta R.T.: 0.002 min
 Response: 132117149
 Conc: 44.43 ng/ml



#8 Heptachlor epoxide

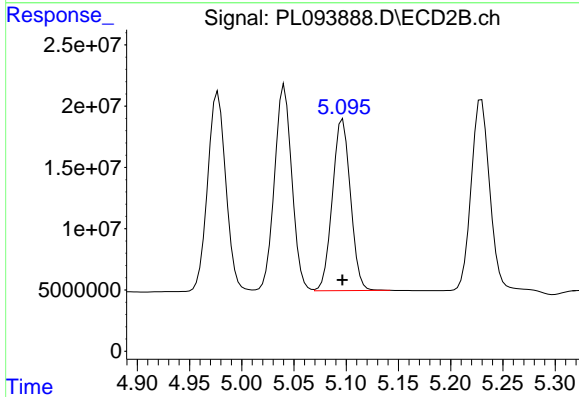
R.T.: 4.727 min
 Delta R.T.: 0.000 min
 Response: 187981286
 Conc: 44.97 ng/ml



#9 Endosulfan I

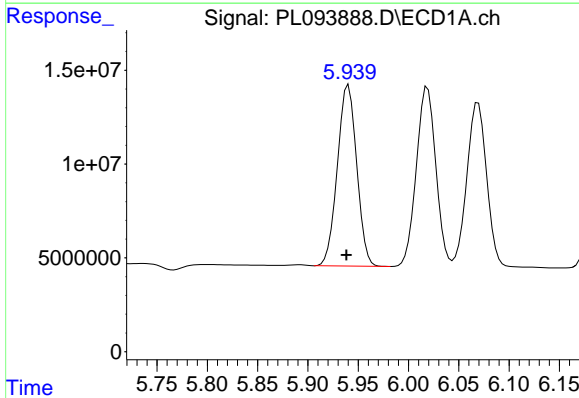
R.T.: 6.069 min
 Delta R.T.: 0.002 min
 Response: 119668716
 Conc: 45.28 ng/ml

Instrument :
 ECD_L
 ClientSampleId :
 PSTDCCC050



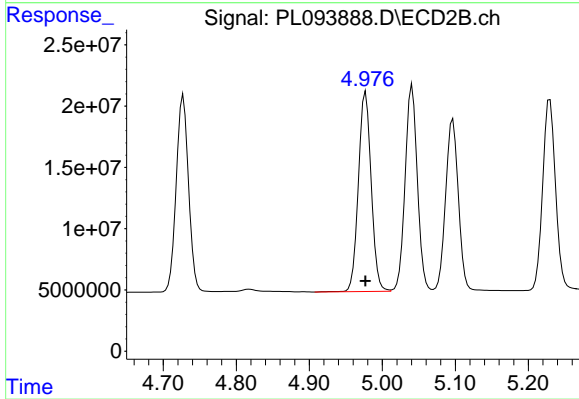
#9 Endosulfan I

R.T.: 5.097 min
 Delta R.T.: 0.000 min
 Response: 168701213
 Conc: 43.51 ng/ml



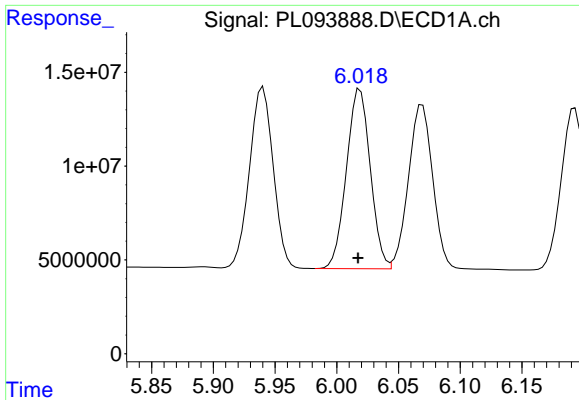
#10 gamma-Chlordane

R.T.: 5.940 min
 Delta R.T.: 0.002 min
 Response: 128962604
 Conc: 46.27 ng/ml



#10 gamma-Chlordane

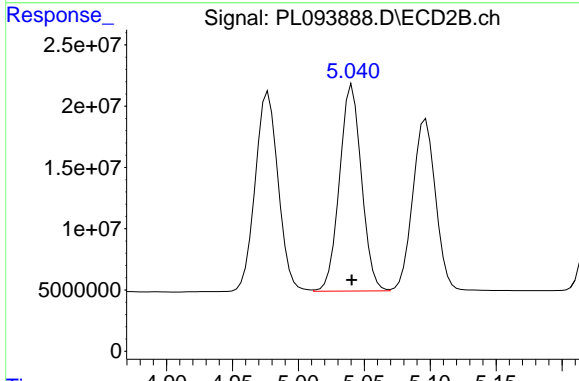
R.T.: 4.977 min
 Delta R.T.: 0.000 min
 Response: 198359324
 Conc: 46.81 ng/ml



#11 alpha-Chlordane

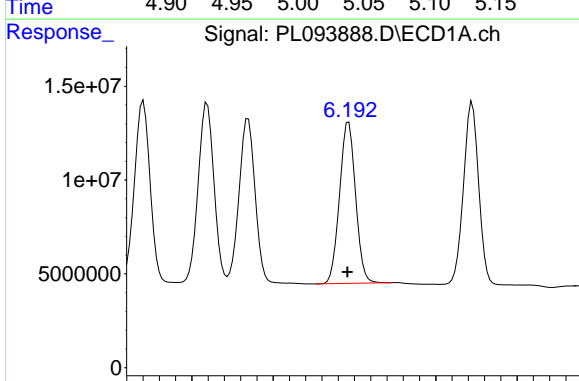
R.T.: 6.019 min
Delta R.T.: 0.002 min
Response: 129029767
Conc: 46.27 ng/ml

Instrument :
ECD_L
ClientSampleId :
PSTDCCC050



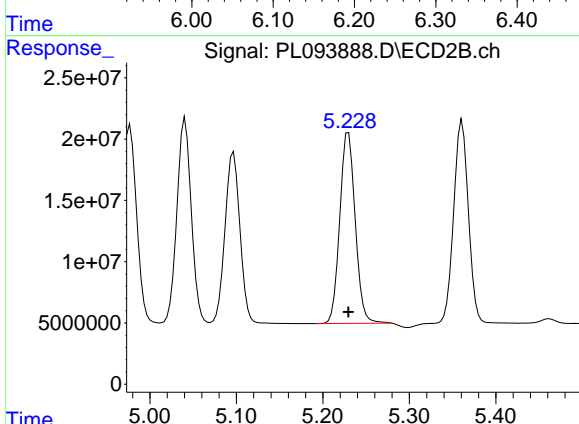
#11 alpha-Chlordane

R.T.: 5.041 min
Delta R.T.: 0.000 min
Response: 195217575
Conc: 46.63 ng/ml



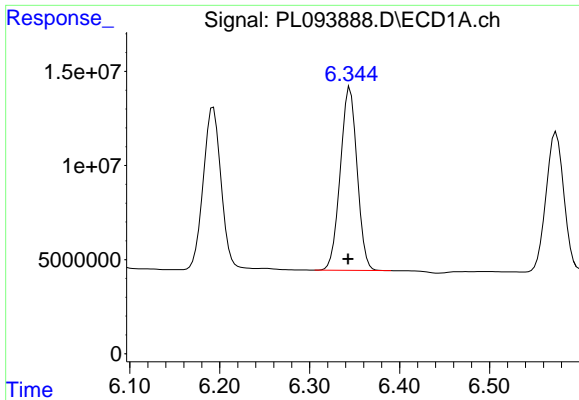
#12 4,4'-DDE

R.T.: 6.193 min
Delta R.T.: 0.002 min
Response: 117560969
Conc: 48.29 ng/ml



#12 4,4'-DDE

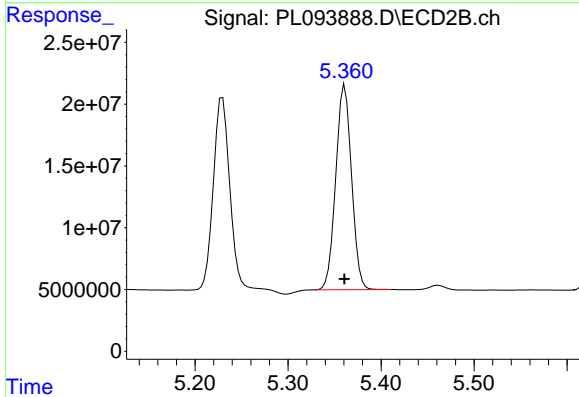
R.T.: 5.230 min
Delta R.T.: 0.000 min
Response: 192196127
Conc: 47.94 ng/ml



#13 Dieldrin

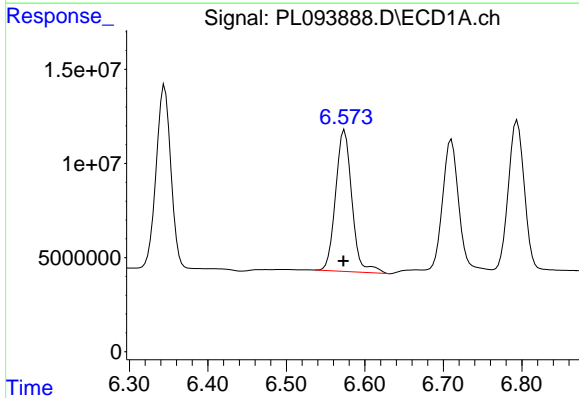
R.T.: 6.345 min
 Delta R.T.: 0.002 min
 Response: 126354103
 Conc: 45.52 ng/ml

Instrument :
 ECD_L
 ClientSampleId :
 PSTDCCC050



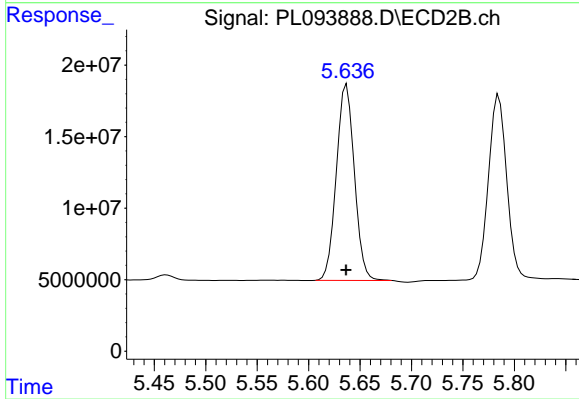
#13 Dieldrin

R.T.: 5.361 min
 Delta R.T.: 0.000 min
 Response: 195832251
 Conc: 45.59 ng/ml



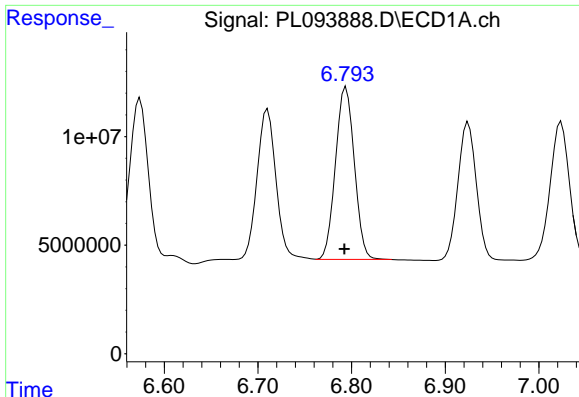
#14 Endrin

R.T.: 6.574 min
 Delta R.T.: 0.002 min
 Response: 108766563
 Conc: 46.39 ng/ml



#14 Endrin

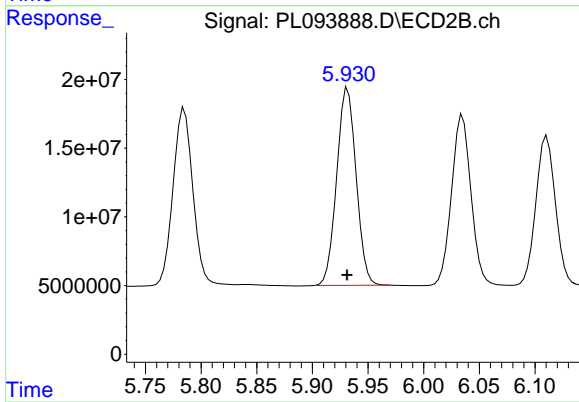
R.T.: 5.637 min
 Delta R.T.: 0.000 min
 Response: 167192103
 Conc: 45.28 ng/ml



#15 Endosulfan II

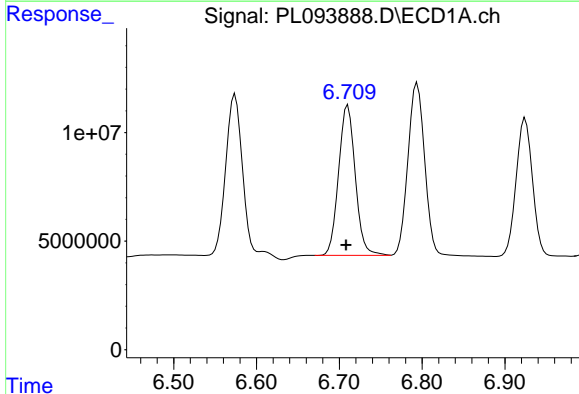
R.T.: 6.794 min
 Delta R.T.: 0.002 min
 Response: 111370989
 Conc: 46.22 ng/ml

Instrument :
 ECD_L
 ClientSampleId :
 PSTDCCC050



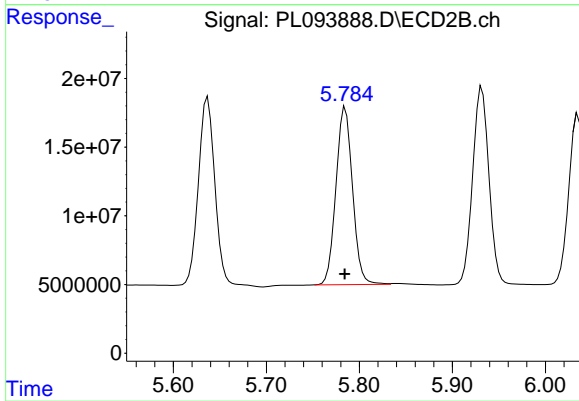
#15 Endosulfan II

R.T.: 5.932 min
 Delta R.T.: 0.000 min
 Response: 175010173
 Conc: 47.25 ng/ml



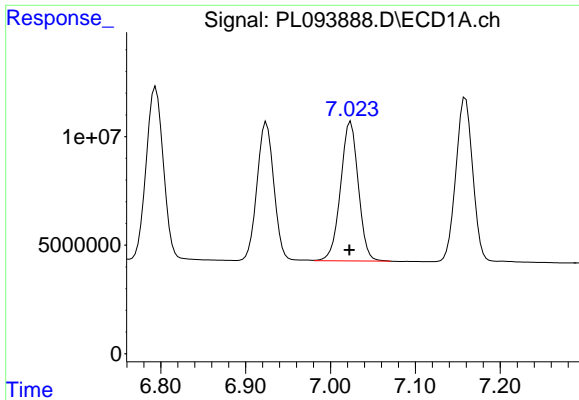
#16 4,4'-DDD

R.T.: 6.710 min
 Delta R.T.: 0.002 min
 Response: 96933638
 Conc: 51.00 ng/ml



#16 4,4'-DDD

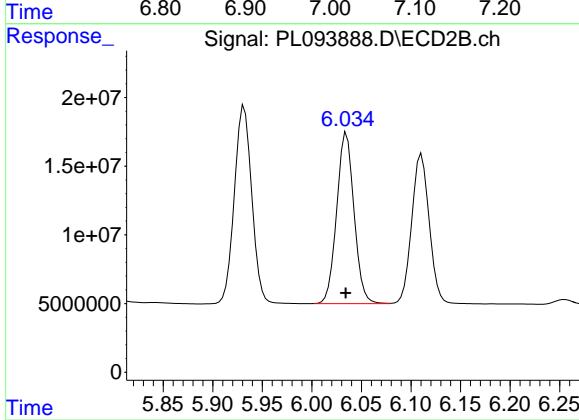
R.T.: 5.785 min
 Delta R.T.: 0.000 min
 Response: 160095115
 Conc: 50.72 ng/ml



#17 4,4'-DDT

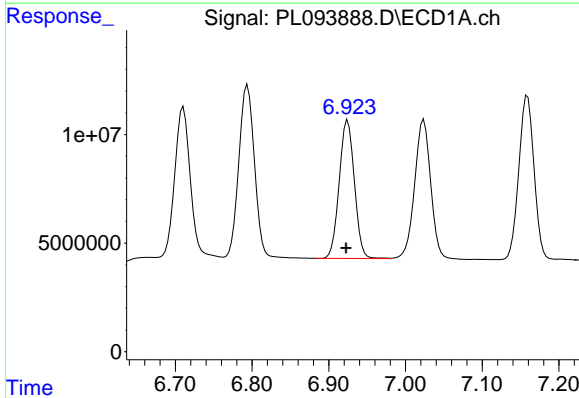
R.T.: 7.024 min
 Delta R.T.: 0.002 min
 Response: 93129277
 Conc: 47.22 ng/ml

Instrument :
 ECD_L
 ClientSampleId :
 PSTDCCC050



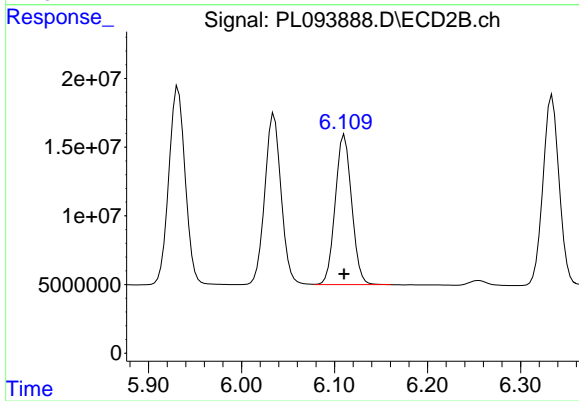
#17 4,4'-DDT

R.T.: 6.035 min
 Delta R.T.: 0.000 min
 Response: 151621181
 Conc: 46.59 ng/ml



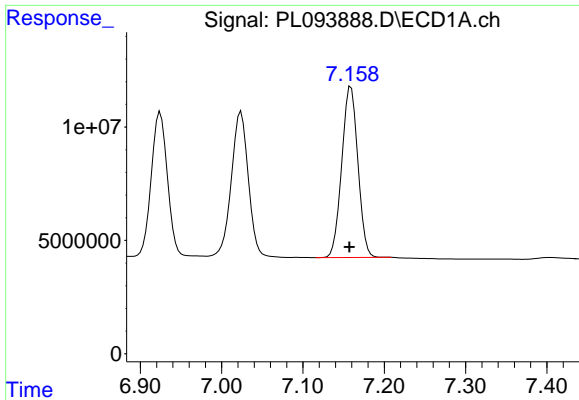
#18 Endrin aldehyde

R.T.: 6.925 min
 Delta R.T.: 0.002 min
 Response: 87931802
 Conc: 45.23 ng/ml



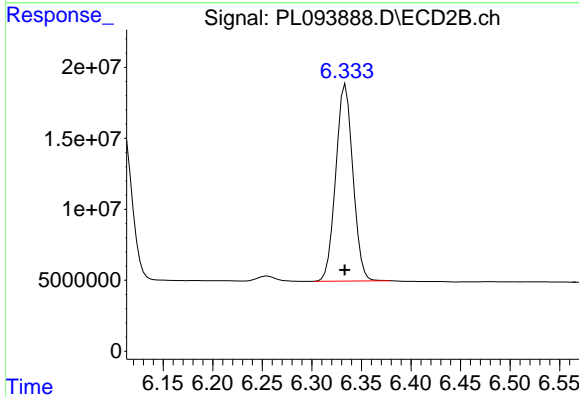
#18 Endrin aldehyde

R.T.: 6.111 min
 Delta R.T.: 0.000 min
 Response: 133953448
 Conc: 44.00 ng/ml

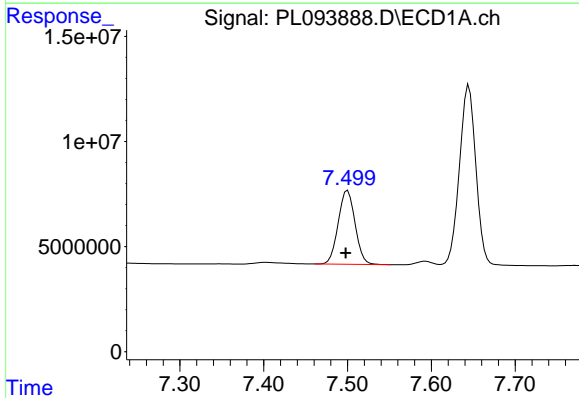


#19 Endosulfan Sulfate
 R.T.: 7.159 min
 Delta R.T.: 0.002 min
 Response: 103804949
 Conc: 45.86 ng/ml

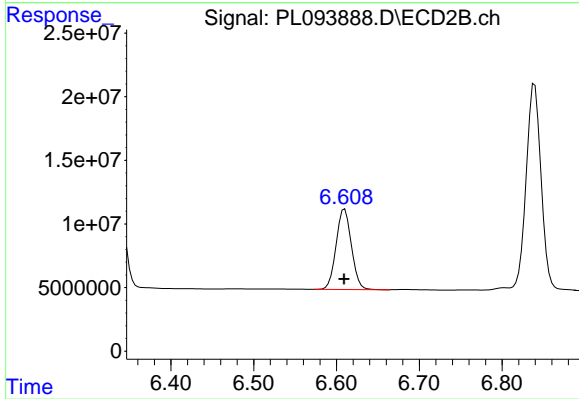
Instrument :
 ECD_L
 ClientSampleId :
 PSTDCCC050



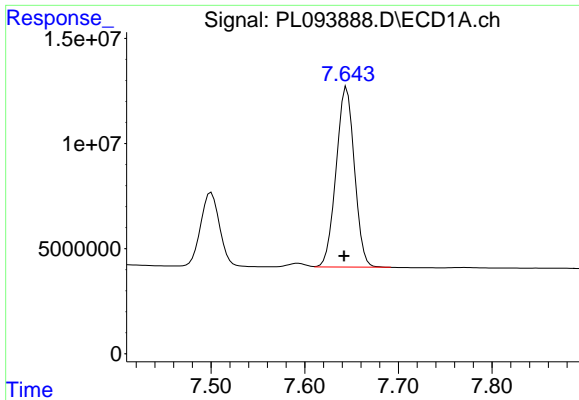
#19 Endosulfan Sulfate
 R.T.: 6.334 min
 Delta R.T.: 0.000 min
 Response: 167061847
 Conc: 46.85 ng/ml



#20 Methoxychlor
 R.T.: 7.500 min
 Delta R.T.: 0.002 min
 Response: 49020147
 Conc: 46.98 ng/ml



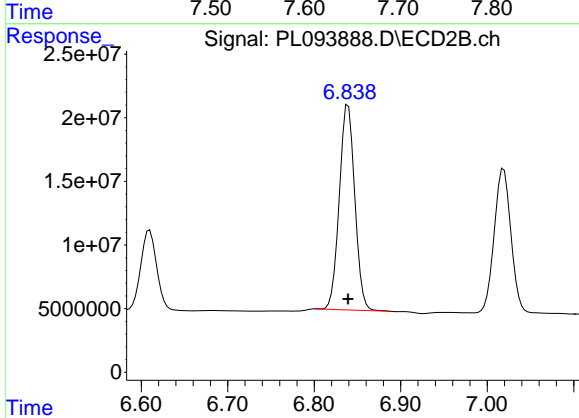
#20 Methoxychlor
 R.T.: 6.610 min
 Delta R.T.: 0.000 min
 Response: 81226589
 Conc: 45.43 ng/ml



#21 Endrin ketone

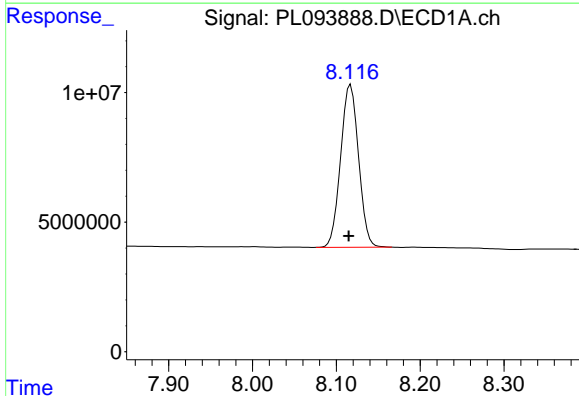
R.T.: 7.645 min
 Delta R.T.: 0.003 min
 Response: 116435152
 Conc: 46.16 ng/ml

Instrument :
 ECD_L
 ClientSampleId :
 PSTDCCC050



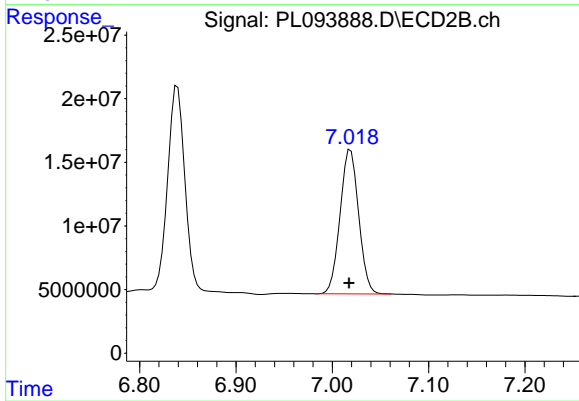
#21 Endrin ketone

R.T.: 6.839 min
 Delta R.T.: 0.000 min
 Response: 199232326
 Conc: 47.49 ng/ml



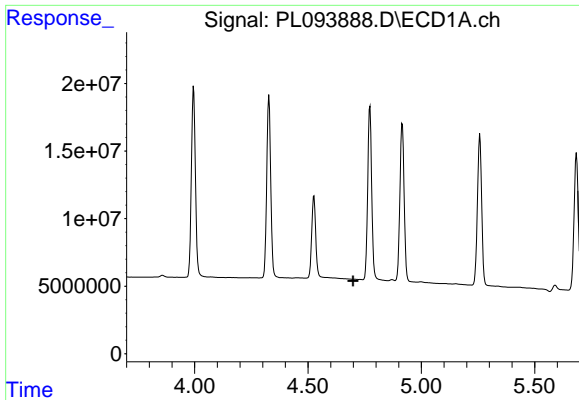
#22 Mirex

R.T.: 8.117 min
 Delta R.T.: 0.002 min
 Response: 93526168
 Conc: 44.91 ng/ml



#22 Mirex

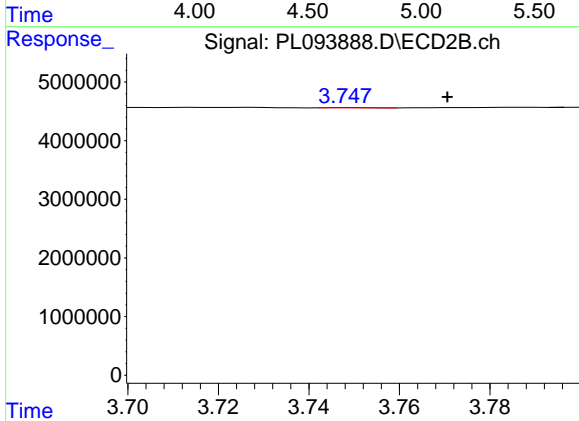
R.T.: 7.019 min
 Delta R.T.: 0.001 min
 Response: 151262167
 Conc: 44.73 ng/ml



#23 Chlordane-1

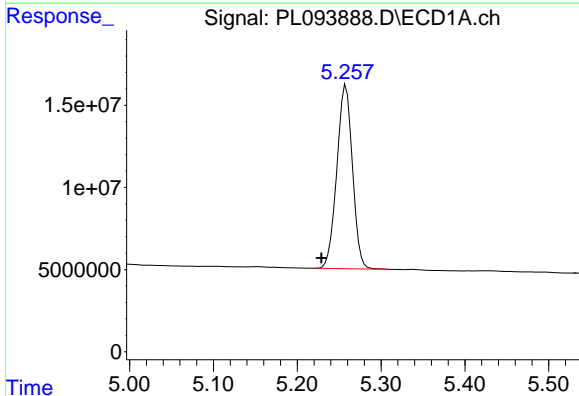
R.T.: 0.000 min
 Exp R.T.: 4.700 min
 Response: 0
 Conc: N.D.

Instrument :
 ECD_L
 ClientSampleId :
 PSTDCCC050



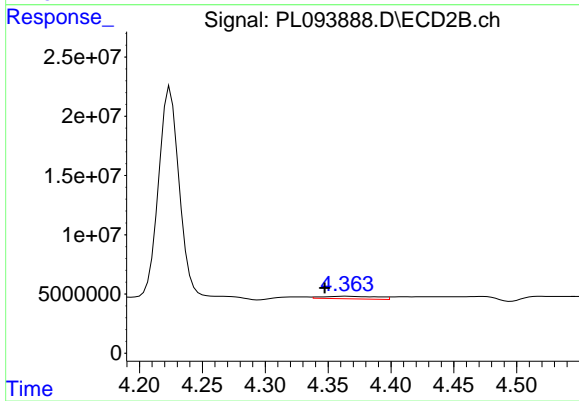
#23 Chlordane-1

R.T.: 3.749 min
 Delta R.T.: -0.022 min
 Response: 23299
 Conc: 0.19 ng/ml



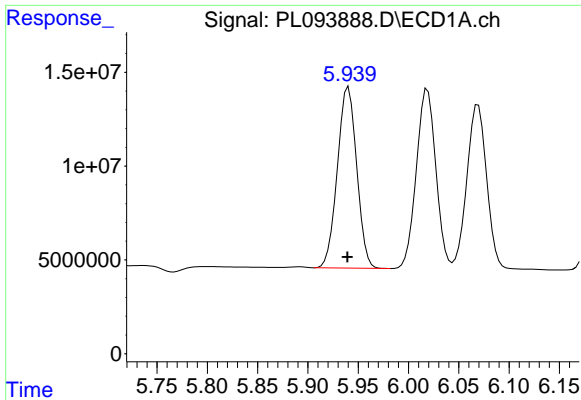
#24 Chlordane-2

R.T.: 5.258 min
 Delta R.T.: 0.029 min
 Response: 144797038
 Conc: 1236.73 ng/ml



#24 Chlordane-2

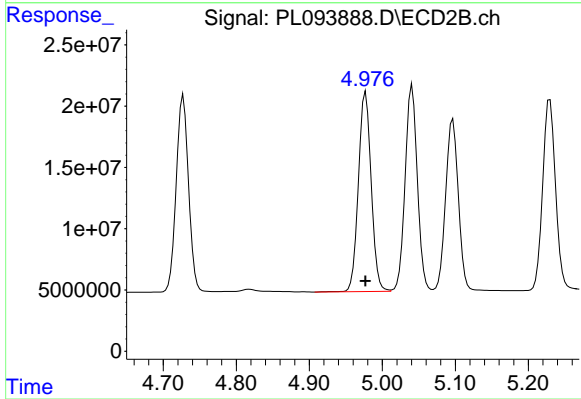
R.T.: 4.364 min
 Delta R.T.: 0.016 min
 Response: 6492082
 Conc: 44.25 ng/ml



#25 Chlordane-3

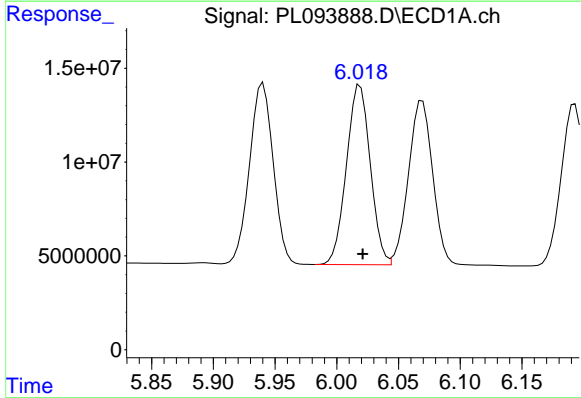
R.T.: 5.940 min
Delta R.T.: 0.001 min
Response: 128962604
Conc: 328.76 ng/ml

Instrument :
ECD_L
ClientSampleId :
PSTDCCC050



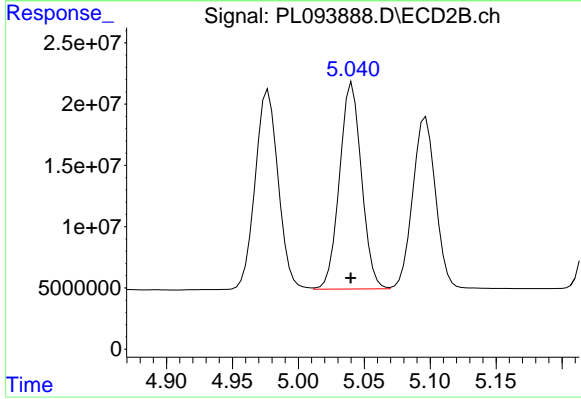
#25 Chlordane-3

R.T.: 4.977 min
Delta R.T.: 0.000 min
Response: 198359324
Conc: 456.19 ng/ml



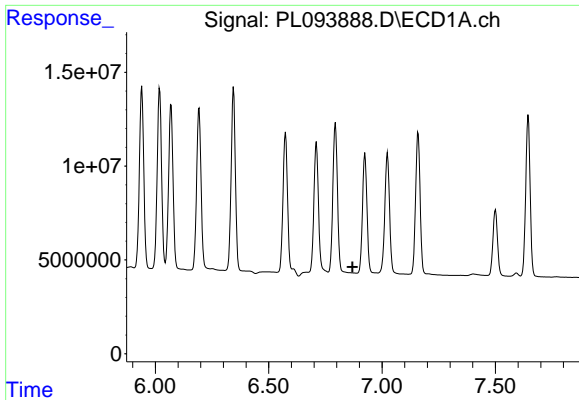
#26 Chlordane-4

R.T.: 6.019 min
Delta R.T.: -0.002 min
Response: 129029767
Conc: 274.47 ng/ml



#26 Chlordane-4

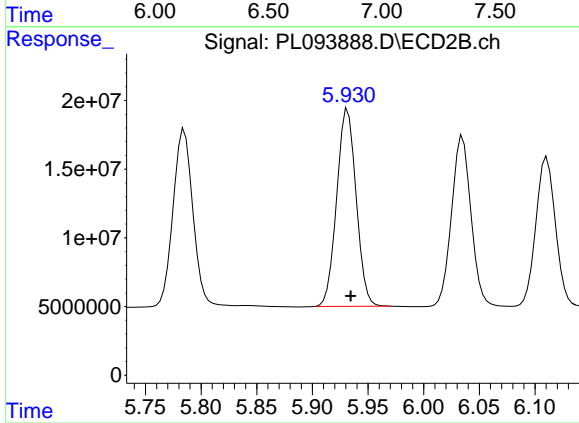
R.T.: 5.041 min
Delta R.T.: 0.001 min
Response: 195217575
Conc: 460.78 ng/ml



#27 Chlordane-5

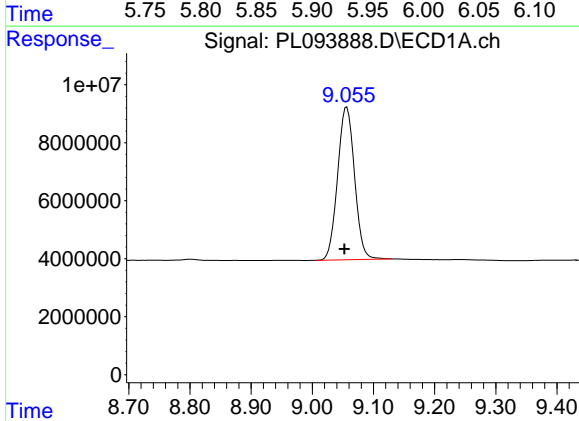
R.T.: 0.000 min
 Exp R.T.: 6.870 min
 Response: 0
 Conc: N.D.

Instrument :
 ECD_L
 ClientSampleId :
 PSTDCCC050



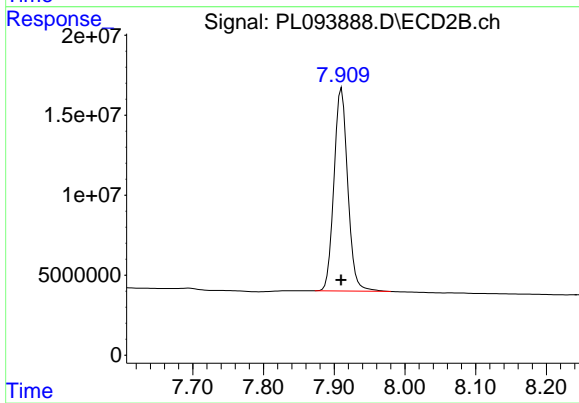
#27 Chlordane-5

R.T.: 5.932 min
 Delta R.T.: -0.003 min
 Response: 175010173
 Conc: 1142.64 ng/ml



#28 Decachlorobiphenyl

R.T.: 9.056 min
 Delta R.T.: 0.004 min
 Response: 101440950
 Conc: 48.49 ng/ml



#28 Decachlorobiphenyl

R.T.: 7.910 min
 Delta R.T.: 0.000 min
 Response: 171506526
 Conc: 48.94 ng/ml