

Data Path : Z:\pestpcbsrv\HPCHEM1\ECD_L\Data\PL020325\
 Data File : PL093999.D
 Signal(s) : Signal #1: ECD1A.ch Signal #2: ECD2B.ch
 Acq On : 03 Feb 2025 16:55
 Operator : AR\AJ
 Sample : I.BLK
 Misc :
 ALS Vial : 2 Sample Multiplier: 1

Instrument :
 ECD_L
 ClientSampleId :
 I.BLK

Integration File signal 1: autoint1.e
 Integration File signal 2: autoint2.e
 Quant Time: Feb 04 00:45:23 2025
 Quant Method : Z:\pestpcbsrv\HPCHEM1\ECD_L\methods\PL012125.M
 Quant Title : GC Extractables
 QLast Update : Tue Jan 21 14:58:05 2025
 Response via : Initial Calibration
 Integrator: ChemStation

Volume Inj. : 1 µl
 Signal #1 Phase : ZB-MR2 Signal #2 Phase: ZB-MR2
 Signal #1 Info : 30M x 0.32mm x0.5 Signal #2 Info : 30M x 0.32mm x0.25µm

| | Compound | RT#1 | RT#2 | Resp#1 | Resp#2 | ng/ml | ng/ml |
|-----------------------------|-----------------|--------|--------|----------|----------|--------|----------|
| ----- | | | | | | | |
| System Monitoring Compounds | | | | | | | |
| 1) | SA Tetrachlo... | 3.538 | 2.774 | 56951406 | 66835066 | 21.150 | 20.475 |
| 28) | SA Decachlor... | 9.054 | 7.909 | 40233223 | 76608118 | 19.233 | 21.863 |
| Target Compounds | | | | | | | |
| 2) | A alpha-BHC | 0.000 | 3.275 | 0 | 269495 | N.D. | 0.055 # |
| 3) | MA gamma-BHC... | 0.000 | 3.625f | 0 | 36496 | N.D. | 0.008 # |
| 4) | MA Heptachlor | 4.904 | 3.943 | 2738357 | 338014 | 0.836 | 0.073 # |
| 5) | MB Aldrin | 0.000 | 4.232 | 0 | 5118952 | N.D. | 1.122 # |
| 6) | B beta-BHC | 0.000 | 3.913 | 0 | 1634736 | N.D. | 0.818 # |
| 7) | B delta-BHC | 4.761 | 4.136 | 13089686 | 149262 | 3.734 | 0.031 # |
| 8) | B Heptachlo... | 0.000 | 4.749f | 0 | 1574155 | N.D. | 0.377 # |
| 9) | A Endosulfan I | 0.000 | 5.078f | 0 | 321011 | N.D. | 0.083 # |
| 10) | B gamma-Chl... | 0.000 | 4.987 | 0 | 3507965 | N.D. | 0.828 # |
| 11) | B alpha-Chl... | 0.000 | 5.054 | 0 | 1101794 | N.D. | 0.263 # |
| 12) | B 4,4'-DDE | 0.000 | 5.239 | 0 | 550606 | N.D. | 0.137 # |
| 13) | MA Dieldrin | 0.000 | 5.370 | 0 | 382369 | N.D. | 0.089 # |
| 14) | MA Endrin | 0.000 | 5.656f | 0 | 6864753 | N.D. | 1.859 # |
| 15) | B Endosulfa... | 6.821f | 5.931 | 7269940 | -110868 | 3.017 | N.D. # |
| 16) | A 4,4'-DDD | 0.000 | 5.794 | 0 | 310773 | N.D. | 0.098 # |
| 18) | B Endrin al... | 0.000 | 6.121 | 0 | 838750 | N.D. | 0.275 # |
| 23) | Chlordane-1 | 0.000 | 3.764 | 0 | 1728750 | N.D. | 13.853 # |
| 24) | Chlordane-2 | 0.000 | 4.323f | 0 | 248022 | N.D. | 1.690 # |
| 25) | Chlordane-3 | 0.000 | 4.987 | 0 | 3507965 | N.D. | 8.068 # |
| 26) | Chlordane-4 | 0.000 | 5.054 | 0 | 1101794 | N.D. | 2.601 # |

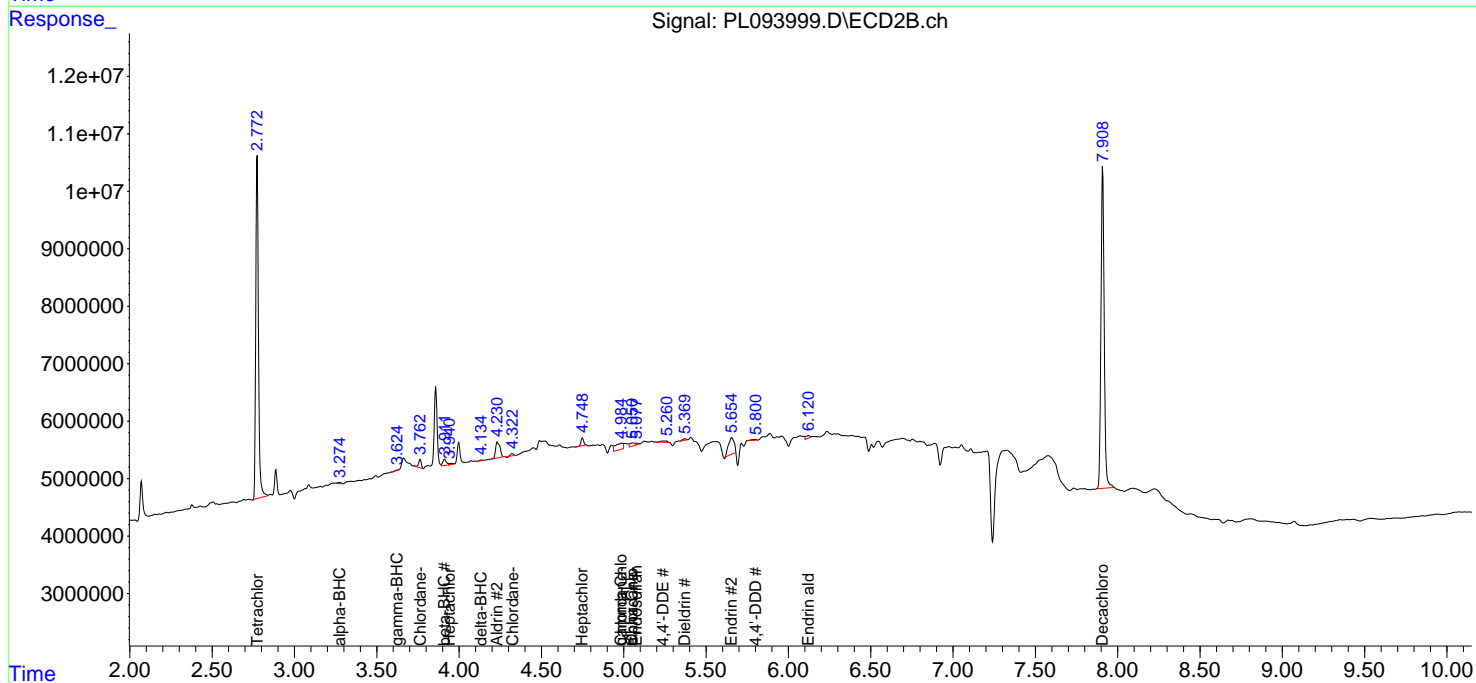
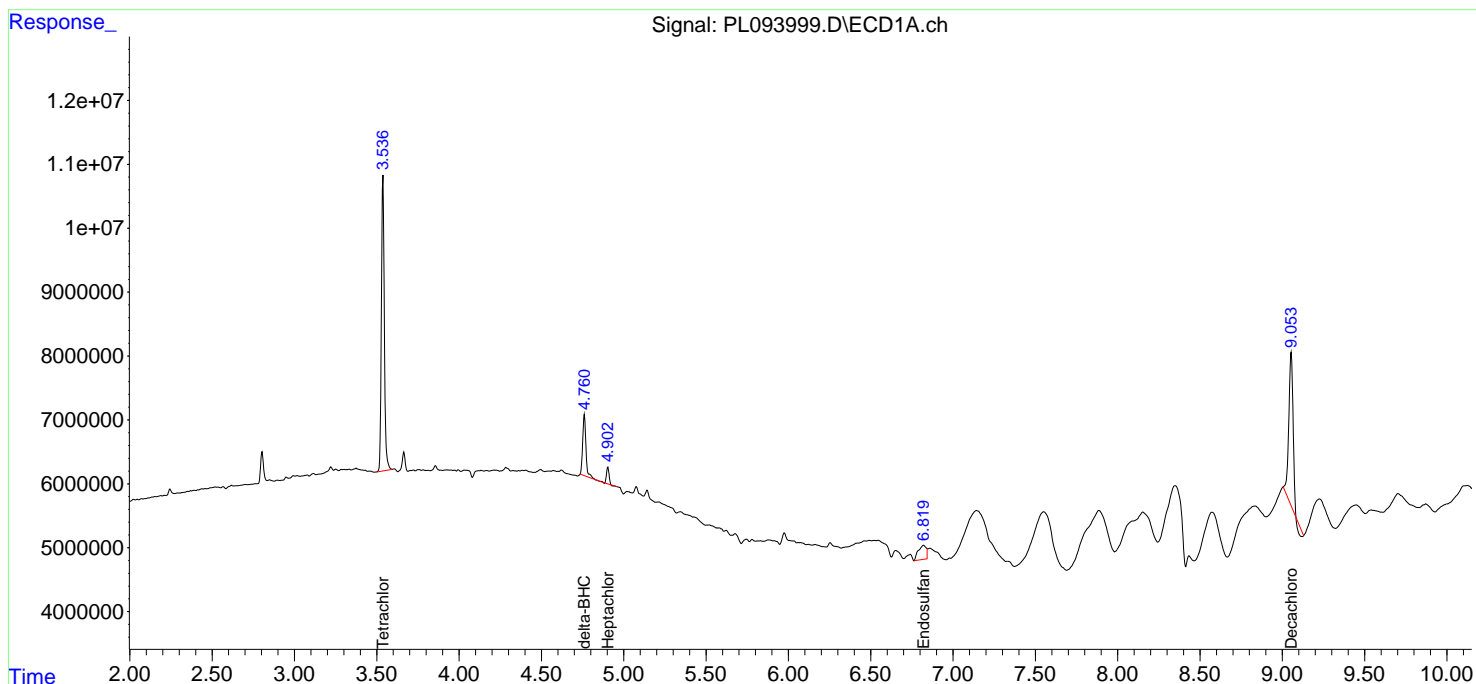
(f)=RT Delta > 1/2 Window (#)=Amounts differ by > 25% (m)=manual int.

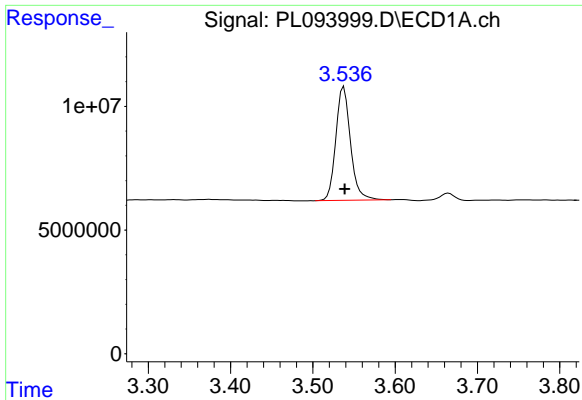
Data Path : Z:\pestpcbsrv\HPCHEM1\ECD_L\Data\PL020325\
 Data File : PL093999.D
 Signal(s) : Signal #1: ECD1A.ch Signal #2: ECD2B.ch
 Acq On : 03 Feb 2025 16:55
 Operator : AR\AJ
 Sample : I.BLK
 Misc :
 ALS Vial : 2 Sample Multiplier: 1

Instrument :
 ECD_L
 ClientSampleId :
 I.BLK

Integration File signal 1: autoint1.e
 Integration File signal 2: autoint2.e
 Quant Time: Feb 04 00:45:23 2025
 Quant Method : Z:\pestpcbsrv\HPCHEM1\ECD_L\methods\PL012125.M
 Quant Title : GC Extractables
 QLast Update : Tue Jan 21 14:58:05 2025
 Response via : Initial Calibration
 Integrator: ChemStation

Volume Inj. : 1 µl
 Signal #1 Phase : ZB-MR1 Signal #2 Phase: ZB-MR2
 Signal #1 Info : 30M x 0.32mm x0.5 Signal #2 Info : 30M x 0.32mm x0.25µm

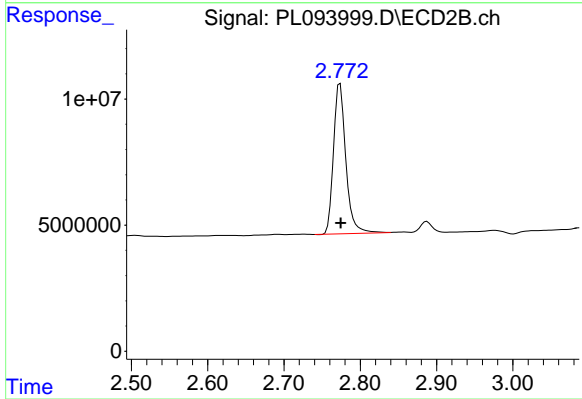




#1 Tetrachloro-m-xylene

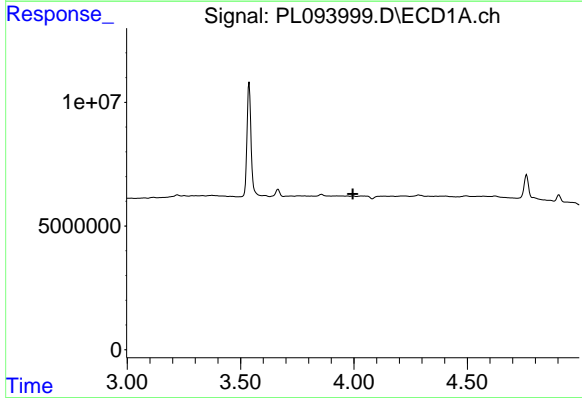
R.T.: 3.538 min
 Delta R.T.: -0.001 min
 Response: 56951406
 Conc: 21.15 ng/ml

Instrument :
 ECD_L
 ClientSampleId :
 I.BLK



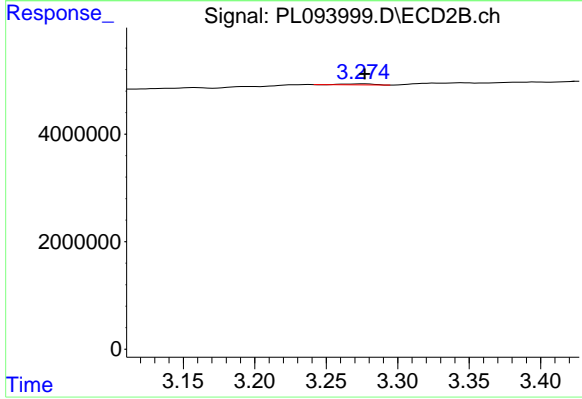
#1 Tetrachloro-m-xylene

R.T.: 2.774 min
 Delta R.T.: 0.000 min
 Response: 66835066
 Conc: 20.48 ng/ml



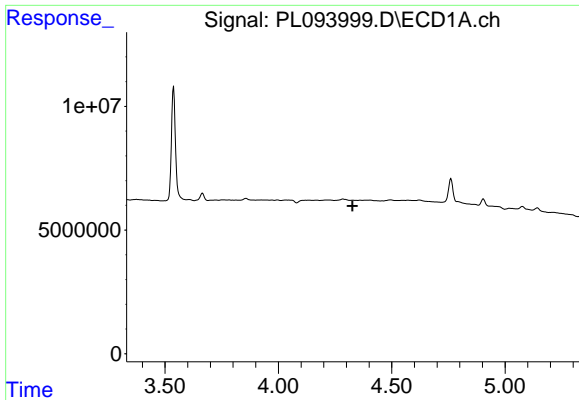
#2 alpha-BHC

R.T.: 0.000 min
 Exp R.T. : 3.995 min
 Response: 0
 Conc: N.D.



#2 alpha-BHC

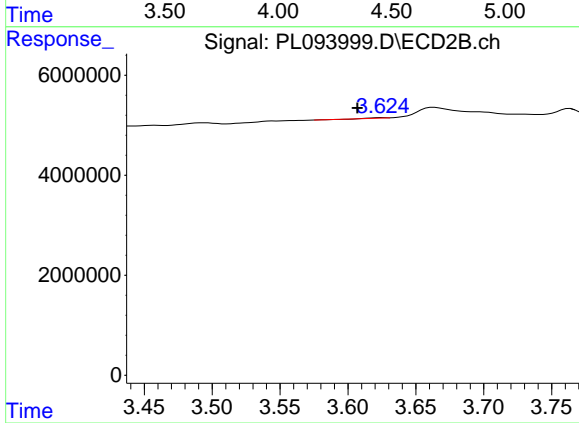
R.T.: 3.275 min
 Delta R.T.: -0.002 min
 Response: 269495
 Conc: 0.06 ng/ml



#3 gamma-BHC (Lindane)

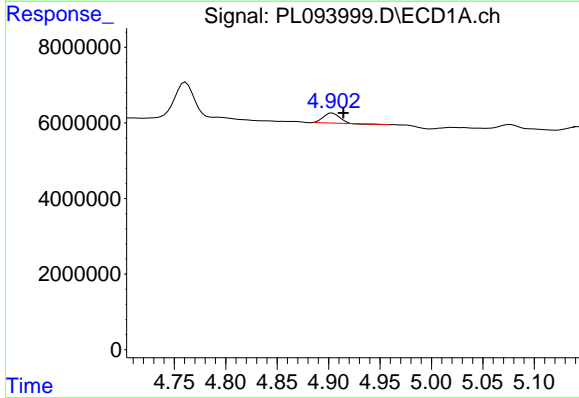
R.T.: 0.000 min
 Exp R.T.: 4.327 min
 Response: 0
 Conc: N.D.

Instrument :
 ECD_L
 ClientSampleId :
 I.BLK



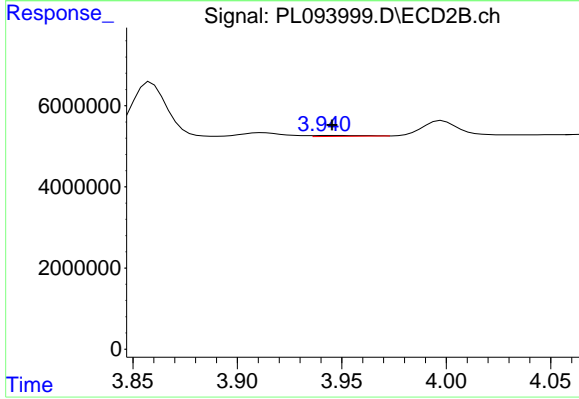
#3 gamma-BHC (Lindane)

R.T.: 3.625 min
 Delta R.T.: 0.018 min
 Response: 36496
 Conc: 0.01 ng/ml



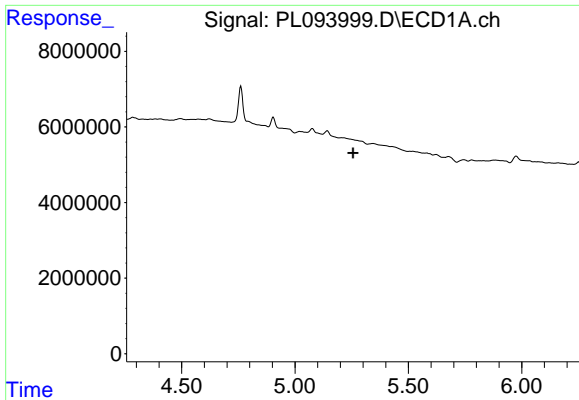
#4 Heptachlor

R.T.: 4.904 min
 Delta R.T.: -0.011 min
 Response: 2738357
 Conc: 0.84 ng/ml



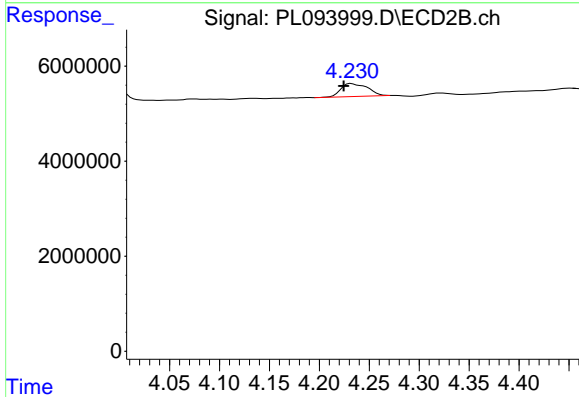
#4 Heptachlor

R.T.: 3.943 min
 Delta R.T.: -0.002 min
 Response: 338014
 Conc: 0.07 ng/ml

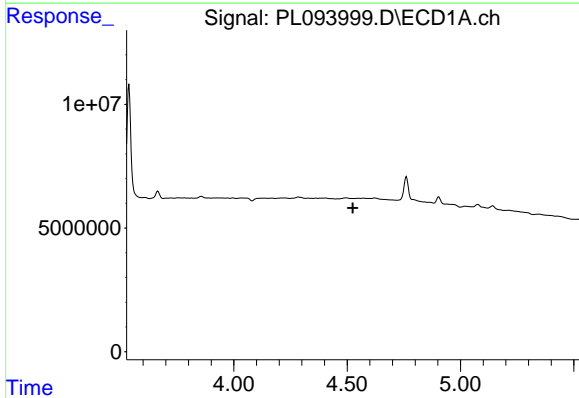


#5 Aldrin
 R.T.: 0.000 min
 Exp R.T.: 5.256 min
 Response: 0
 Conc: N.D.

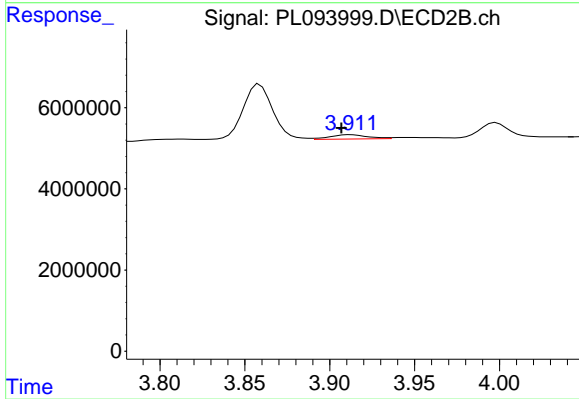
Instrument :
 ECD_L
 ClientSampleId :
 I.BLK



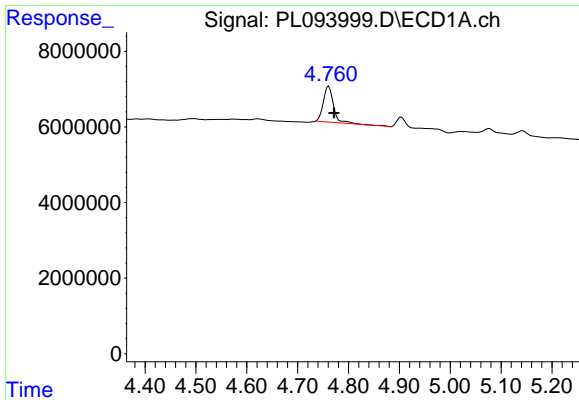
#5 Aldrin
 R.T.: 4.232 min
 Delta R.T.: 0.007 min
 Response: 5118952
 Conc: 1.12 ng/ml



#6 beta-BHC
 R.T.: 0.000 min
 Exp R.T.: 4.525 min
 Response: 0
 Conc: N.D.



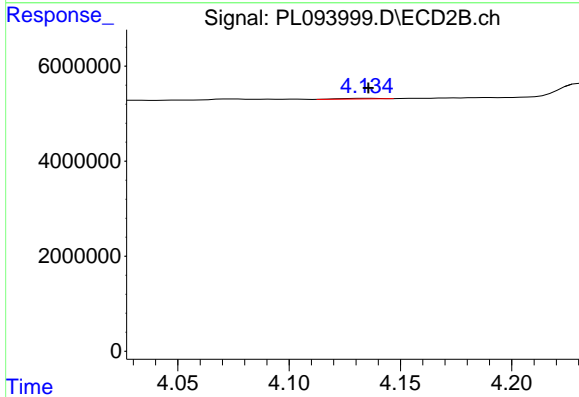
#6 beta-BHC
 R.T.: 3.913 min
 Delta R.T.: 0.006 min
 Response: 1634736
 Conc: 0.82 ng/ml



#7 delta-BHC

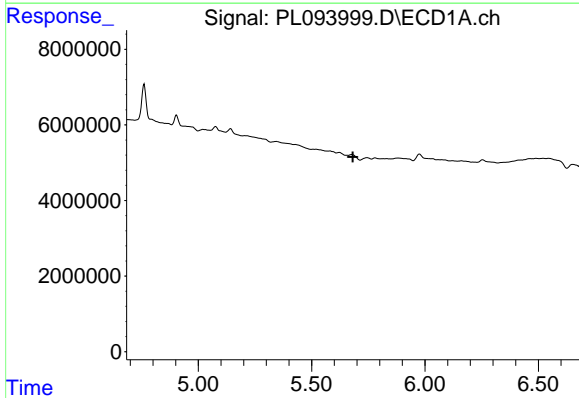
R.T.: 4.761 min
 Delta R.T.: -0.011 min
 Response: 13089686
 Conc: 3.73 ng/ml

Instrument :
 ECD_L
 ClientSampleId :
 I.BLK



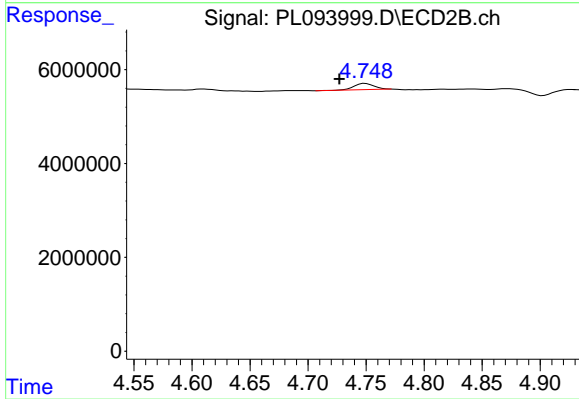
#7 delta-BHC

R.T.: 4.136 min
 Delta R.T.: 0.000 min
 Response: 149262
 Conc: 0.03 ng/ml



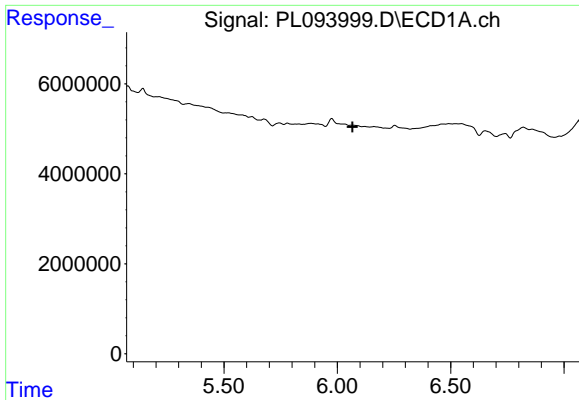
#8 Heptachlor epoxide

R.T.: 0.000 min
 Exp R.T. : 5.682 min
 Response: 0
 Conc: N.D.



#8 Heptachlor epoxide

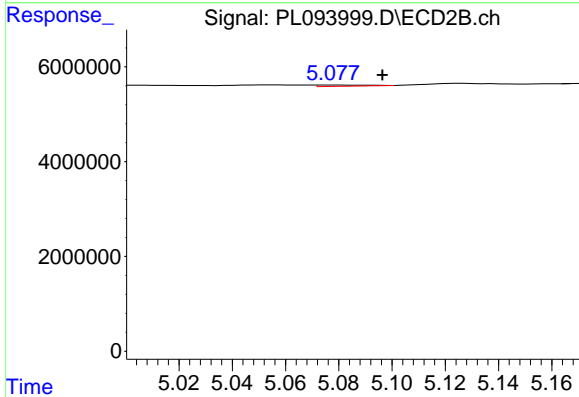
R.T.: 4.749 min
 Delta R.T.: 0.022 min
 Response: 1574155
 Conc: 0.38 ng/ml



#9 Endosulfan I

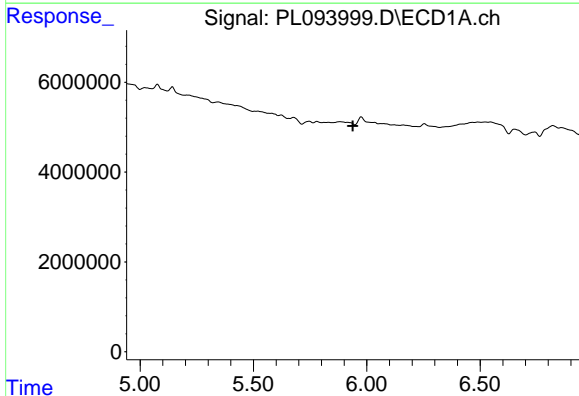
R.T.: 0.000 min
 Exp R.T.: 6.067 min
 Response: 0
 Conc: N.D.

Instrument : ECD_L
 ClientSampleId : I.BLK



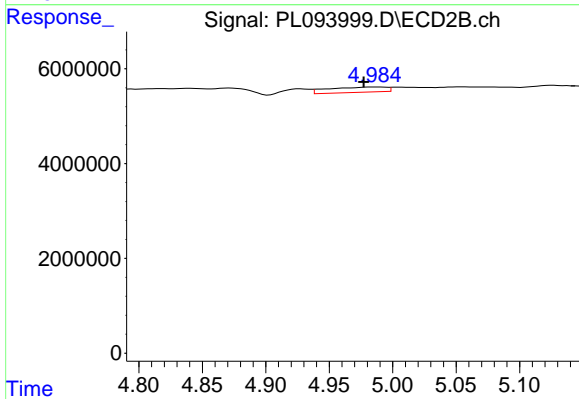
#9 Endosulfan I

R.T.: 5.078 min
 Delta R.T.: -0.018 min
 Response: 321011
 Conc: 0.08 ng/ml



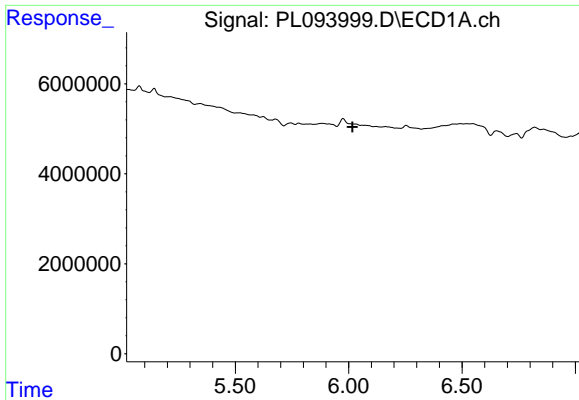
#10 gamma-Chlordane

R.T.: 0.000 min
 Exp R.T.: 5.938 min
 Response: 0
 Conc: N.D.



#10 gamma-Chlordane

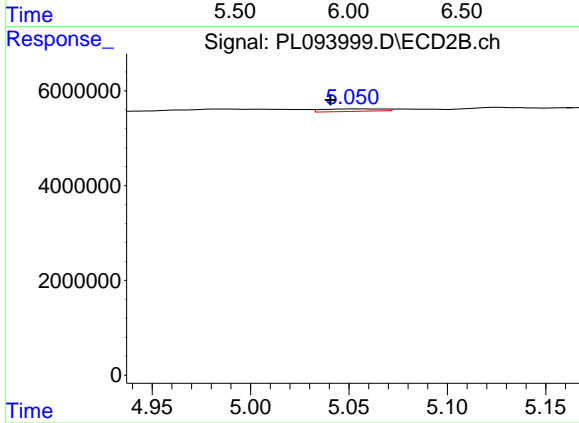
R.T.: 4.987 min
 Delta R.T.: 0.010 min
 Response: 3507965
 Conc: 0.83 ng/ml



#11 alpha-Chlordane

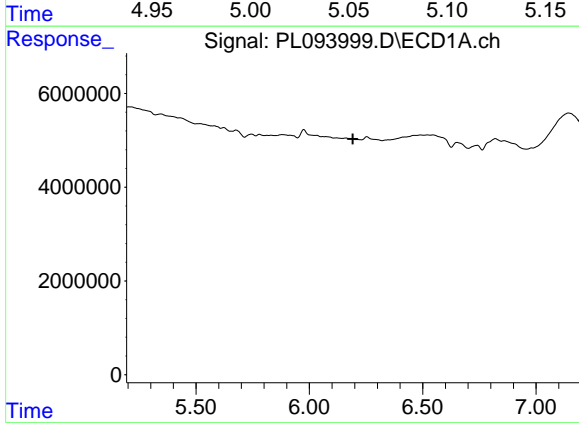
R.T.: 0.000 min
 Exp R.T. : 6.017 min
 Response: 0
 Conc: N.D.

Instrument :
 ECD_L
 ClientSampleId :
 I.BLK



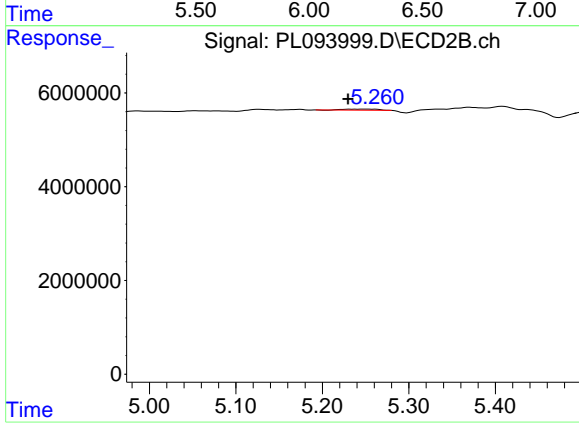
#11 alpha-Chlordane

R.T.: 5.054 min
 Delta R.T.: 0.013 min
 Response: 1101794
 Conc: 0.26 ng/ml



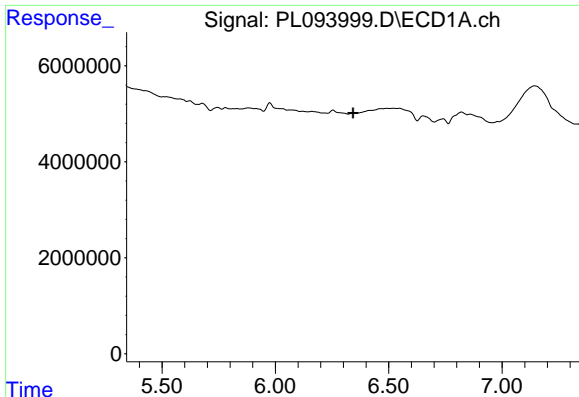
#12 4,4'-DDE

R.T.: 0.000 min
 Exp R.T. : 6.191 min
 Response: 0
 Conc: N.D.



#12 4,4'-DDE

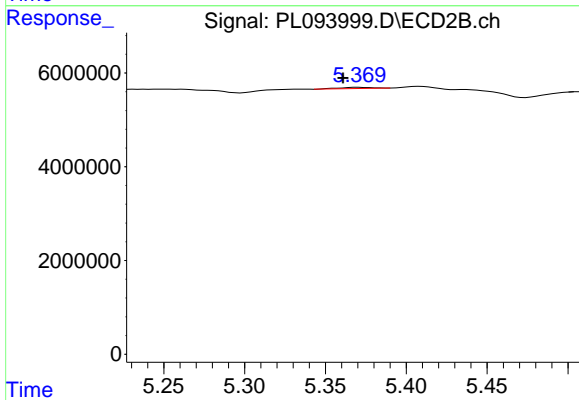
R.T.: 5.239 min
 Delta R.T.: 0.009 min
 Response: 550606
 Conc: 0.14 ng/ml



#13 Dieldrin

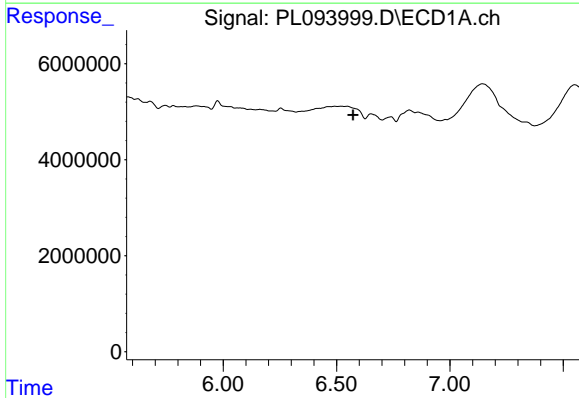
R.T.: 0.000 min
 Exp R.T. : 6.343 min
 Response: 0
 Conc: N.D.

Instrument :
 ECD_L
 ClientSampleId :
 I.BLK



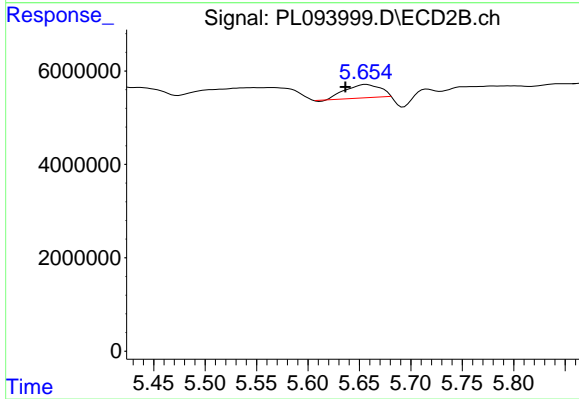
#13 Dieldrin

R.T.: 5.370 min
 Delta R.T.: 0.009 min
 Response: 382369
 Conc: 0.09 ng/ml



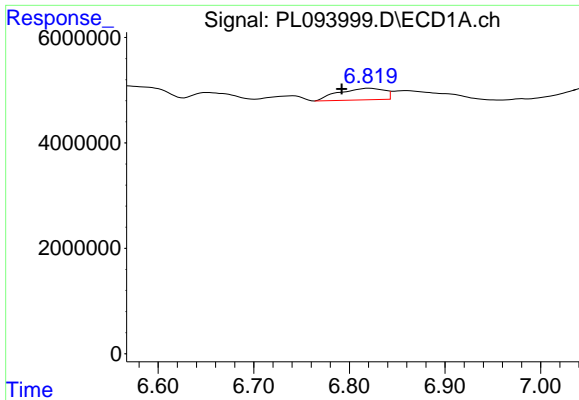
#14 Endrin

R.T.: 0.000 min
 Exp R.T. : 6.572 min
 Response: 0
 Conc: N.D.



#14 Endrin

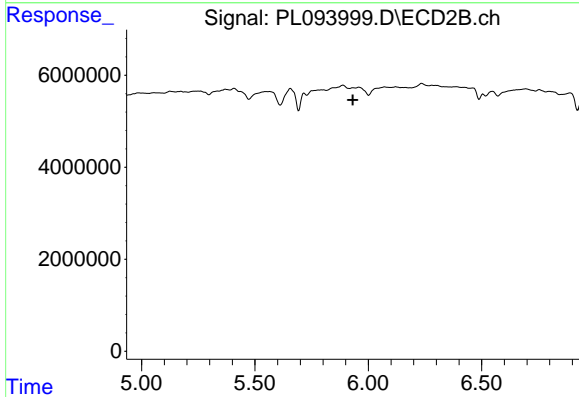
R.T.: 5.656 min
 Delta R.T.: 0.020 min
 Response: 6864753
 Conc: 1.86 ng/ml



#15 Endosulfan II

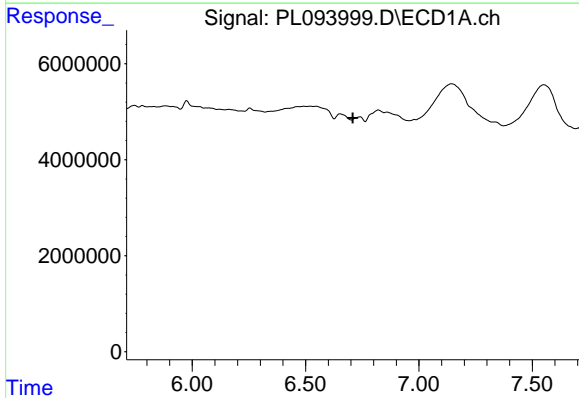
R.T.: 6.821 min
 Delta R.T.: 0.029 min
 Response: 7269940
 Conc: 3.02 ng/ml

Instrument :
 ECD_L
 ClientSampleId :
 I.BLK



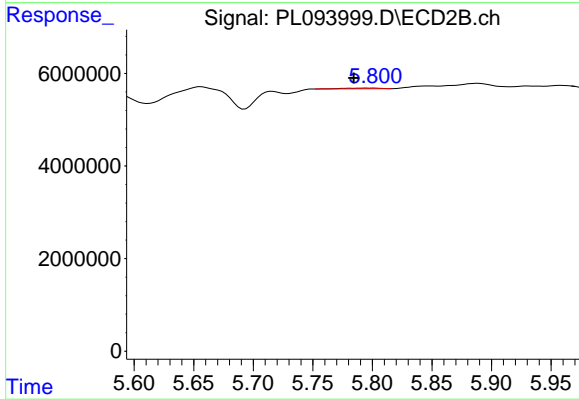
#15 Endosulfan II

R.T.: 5.931 min
 Delta R.T.: 0.000 min
 Response: -110868
 Conc: N.D.



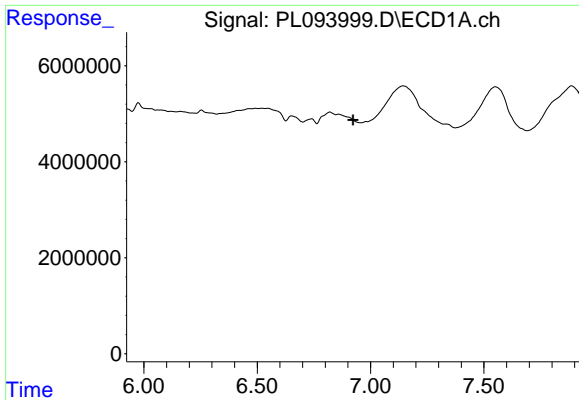
#16 4,4'-DDD

R.T.: 0.000 min
 Exp R.T. : 6.708 min
 Response: 0
 Conc: N.D.



#16 4,4'-DDD

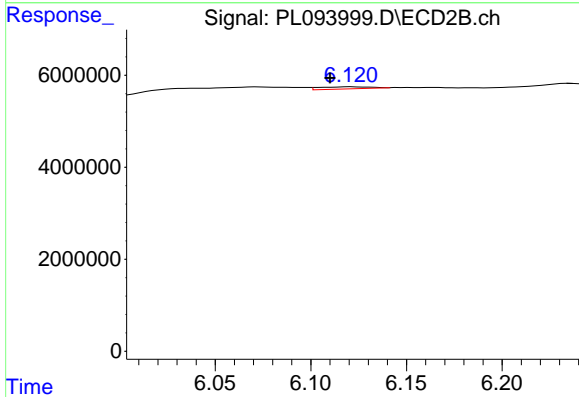
R.T.: 5.794 min
 Delta R.T.: 0.010 min
 Response: 310773
 Conc: 0.10 ng/ml



#18 Endrin aldehyde

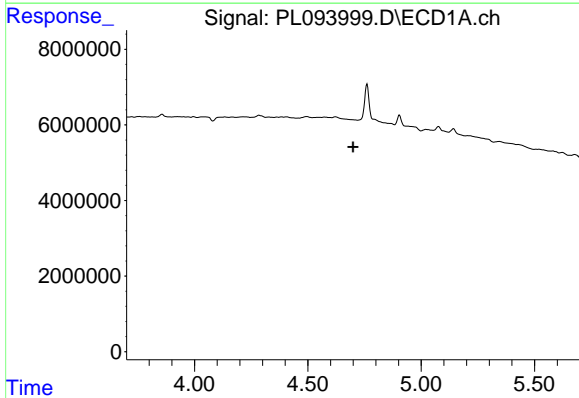
R.T.: 0.000 min
 Exp R.T.: 6.923 min
 Response: 0
 Conc: N.D.

Instrument :
 ECD_L
 ClientSampleId :
 I.BLK



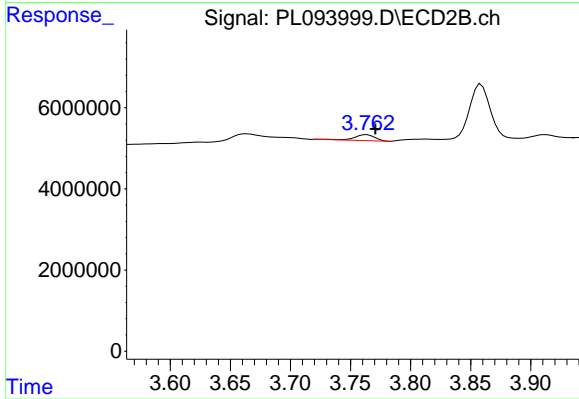
#18 Endrin aldehyde

R.T.: 6.121 min
 Delta R.T.: 0.011 min
 Response: 838750
 Conc: 0.28 ng/ml



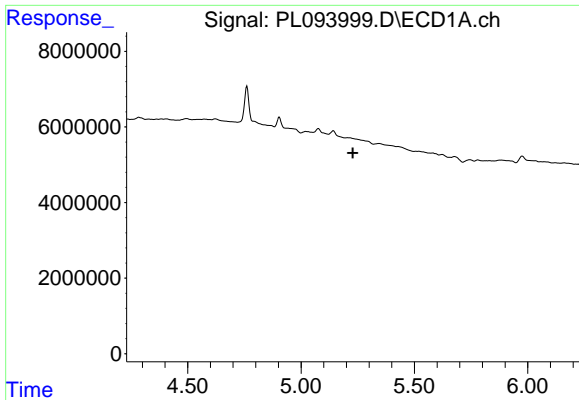
#23 Chlordane-1

R.T.: 0.000 min
 Exp R.T.: 4.700 min
 Response: 0
 Conc: N.D.



#23 Chlordane-1

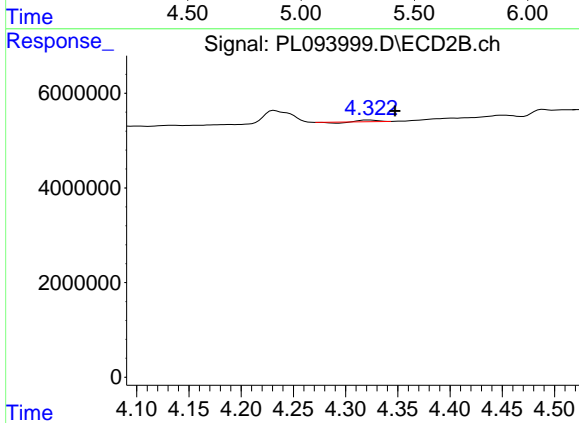
R.T.: 3.764 min
 Delta R.T.: -0.007 min
 Response: 1728750
 Conc: 13.85 ng/ml



#24 Chlordane-2

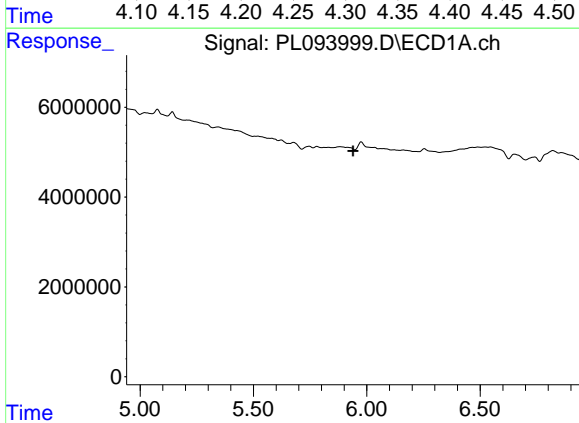
R.T.: 0.000 min
 Exp R.T.: 5.229 min
 Response: 0
 Conc: N.D.

Instrument :
 ECD_L
 ClientSampleId :
 I.BLK



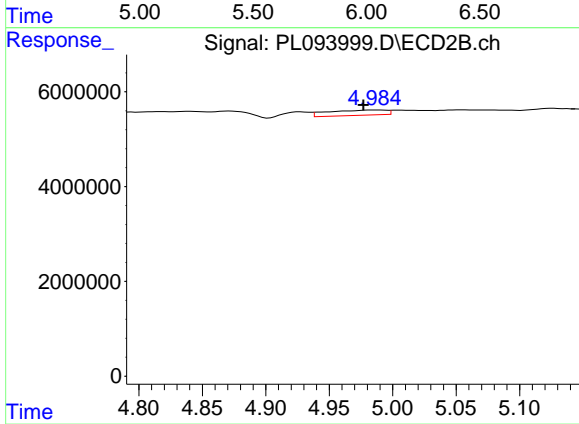
#24 Chlordane-2

R.T.: 4.323 min
 Delta R.T.: -0.025 min
 Response: 248022
 Conc: 1.69 ng/ml



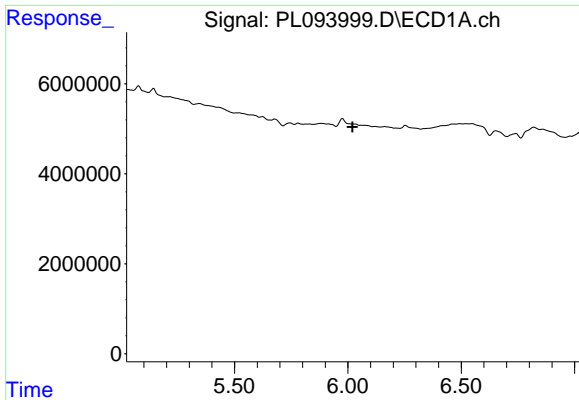
#25 Chlordane-3

R.T.: 0.000 min
 Exp R.T.: 5.939 min
 Response: 0
 Conc: N.D.



#25 Chlordane-3

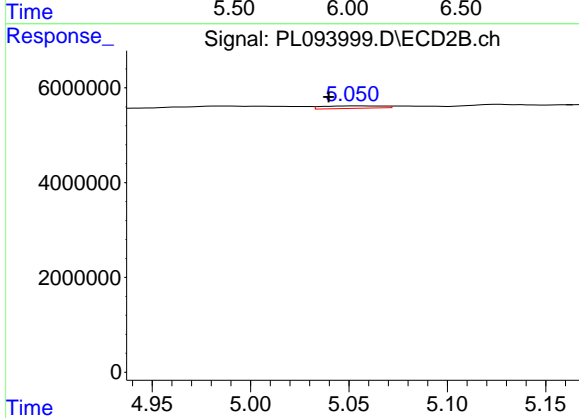
R.T.: 4.987 min
 Delta R.T.: 0.010 min
 Response: 3507965
 Conc: 8.07 ng/ml



#26 Chlordane-4

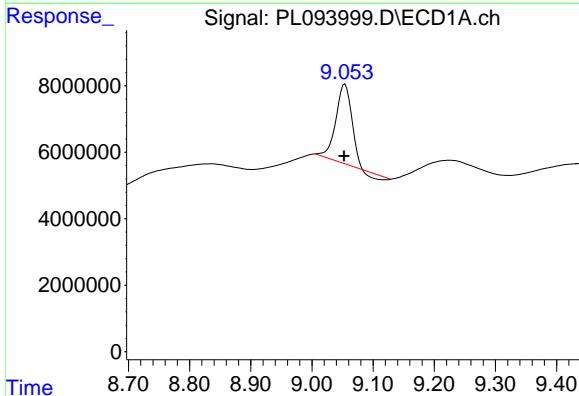
R.T.: 0.000 min
 Exp R.T.: 6.021 min
 Response: 0
 Conc: N.D.

Instrument :
 ECD_L
 ClientSampleId :
 I.BLK



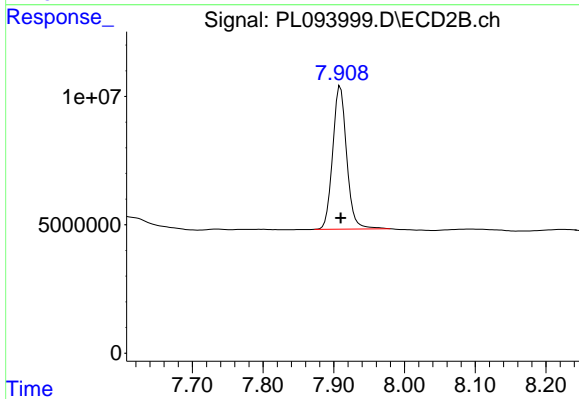
#26 Chlordane-4

R.T.: 5.054 min
 Delta R.T.: 0.014 min
 Response: 1101794
 Conc: 2.60 ng/ml



#28 Decachlorobiphenyl

R.T.: 9.054 min
 Delta R.T.: 0.001 min
 Response: 40233223
 Conc: 19.23 ng/ml



#28 Decachlorobiphenyl

R.T.: 7.909 min
 Delta R.T.: 0.000 min
 Response: 76608118
 Conc: 21.86 ng/ml