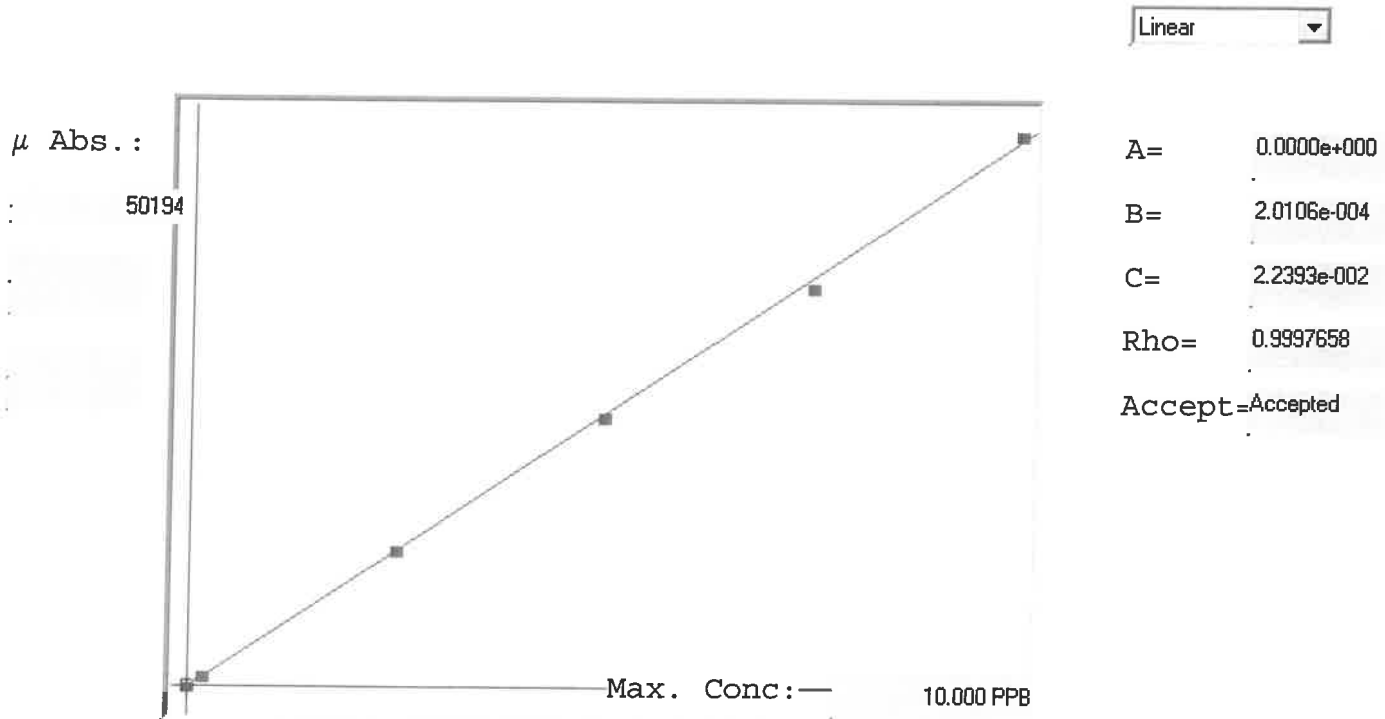


LB134478

7471B

INSTRUMENT ID: CV1



Std ID	Conc.	Calc.	Dev.	Mean	SD or %RSD	Rep 1	Rep 2	Rep 3	Rep 4	Rep 5	G/D
0.0	0.000	0.022	0.022	0	0.000	0					0
0.2	0.200	0.209	0.009	929	0.0 %	929					4
2.5	2.500	2.529	0.029	12466	0.0 %	12466					1
5.0	5.000	4.978	-0.022	24648	0.0 %	24648					0
7.5	7.500	7.347	-0.153	36432	0.0 %	36432					-2
10.0	10.000	10.114	0.114	50194	0.0 %	50194					1

LB134478 INSTRUMENT ID : CV1

Method: 7471B

Operator: Admin

Date of Analysis: 30 Jan 2025 07:01:58

Sample ID	Extended ID	μ Abs.	Conc.	Std Conc	Method	Units	Date	Type	Type
0.0 - 1	SC	0	-	0.0000	7471B	PPB	30 Jan 2025 07:06:06	S	Std
0.2 - 1	50.2	929	-	0.2000	7471B	PPB	30 Jan 2025 07:08:27	S	Std
2.5 - 1	52.5	12466	-	2.5000	7471B	PPB	30 Jan 2025 07:10:43	S	Std
5.0 - 1	35	24648	-	5.0000	7471B	PPB	30 Jan 2025 07:13:00	S	Std
7.5 - 1	52.5	36432	-	7.5000	7471B	PPB	30 Jan 2025 07:15:19	S	Std
10.0 - 1	510	50194	-	10.0000	7471B	PPB	30 Jan 2025 07:23:12	S	Std
ICV74 - 1	ICV74	18482	3.7383	-	7471B	PPB	30 Jan 2025 07:26:05	U	SMPL
ICB74 - 1	ICB74	-317	-0.0413	-	7471B	PPB	30 Jan 2025 07:28:20	U	SMPL
CCV84 - 1	CCV84	24965	5.0418	-	7471B	PPB	30 Jan 2025 07:30:39	U	SMPL
CCB84 - 1	CCB84	-289	-0.0357	-	7471B	PPB	30 Jan 2025 07:32:54	U	SMPL
CRA - 1	CRA	730	0.1692	-	7471B	PPB	30 Jan 2025 07:35:13	U	SMPL
HighStd - 1	HighStd	51668	10.4106	-	7471B	PPB	30 Jan 2025 07:37:28	U	SMPL
ChkStd - 1	ChkStd	34098	6.8781	-	7471B	PPB	30 Jan 2025 07:39:43	U	SMPL
PB166349BL - 1	PBS	-71	0.0081	-	7471B	PPB	30 Jan 2025 07:42:07	U	SMPL
PB166349BS - 1	LCSS	18233	3.6883	-	7471B	PPB	30 Jan 2025 07:44:28	U	SMPL
Q1205-01 - 1	VNJ-236	3532	0.7325	-	7471B	PPB	30 Jan 2025 07:46:46	U	SMPL
Q1206-03 - 1	JPP-20.1-012725	29910	6.0360	-	7471B	PPB	30 Jan 2025 07:49:04	U	SMPL
Q1206-07 - 1	JPP-16.3-012725	14470	2.9317	-	7471B	PPB	30 Jan 2025 07:51:24	U	SMPL
Q1207-03 - 1	JPP-2.1-012725	20740	4.1923	-	7471B	PPB	30 Jan 2025 07:53:47	U	SMPL
Q1207-07 - 1	JPP-5.1-012725	10666	2.1669	-	7471B	PPB	30 Jan 2025 07:56:06	U	SMPL
CCV85 - 1	CCV85	25244	5.0979	-	7471B	PPB	30 Jan 2025 07:58:24	U	SMPL
CCB85 - 1	CCB85	-166	-0.0110	-	7471B	PPB	30 Jan 2025 08:00:42	U	SMPL
Q1207-11 - 1	JPP-4.5-012725	26950	5.4409	-	7471B	PPB	30 Jan 2025 08:03:00	U	SMPL
Q1207-15 - 1	JPP-16.2-012725	19309	3.9046	-	7471B	PPB	30 Jan 2025 08:11:21	U	SMPL
Q1207-15DUP - 1	JPP-16.2-012725DUP	19008	3.8441	-	7471B	PPB	30 Jan 2025 08:13:36	U	SMPL
Q1207-15MS - 1	JPP-16.2-012725MS	37833	7.6290	-	7471B	PPB	30 Jan 2025 08:15:55	U	SMPL
Q1207-15MSD - 1	JPP-16.2-012725MSD	40173	8.0995	-	7471B	PPB	30 Jan 2025 08:21:00	U	SMPL
Q1207-19 - 1	JPP-20.2-012725	26361	5.3225	-	7471B	PPB	30 Jan 2025 08:23:18	U	SMPL
Q1209-01 - 1	WC-4	11532	2.3410	-	7471B	PPB	30 Jan 2025 08:25:40	U	SMPL
Q1209-05 - 1	WC-5	741	0.1714	-	7471B	PPB	30 Jan 2025 08:28:00	U	SMPL
Q1207-15LX5 - 1		4134	0.8536	-	7471B	PPB	30 Jan 2025 08:30:20	U	SMPL
Q1207-15A - 1		37415	7.5450	-	7471B	PPB	30 Jan 2025 08:32:36	U	SMPL
CCV86 - 1	CCV86	25605	5.1705	-	7471B	PPB	30 Jan 2025 08:34:52	U	SMPL
CCB86 - 1	CCB86	-169	-0.0116	-	7471B	PPB	30 Jan 2025 08:37:12	U	SMPL