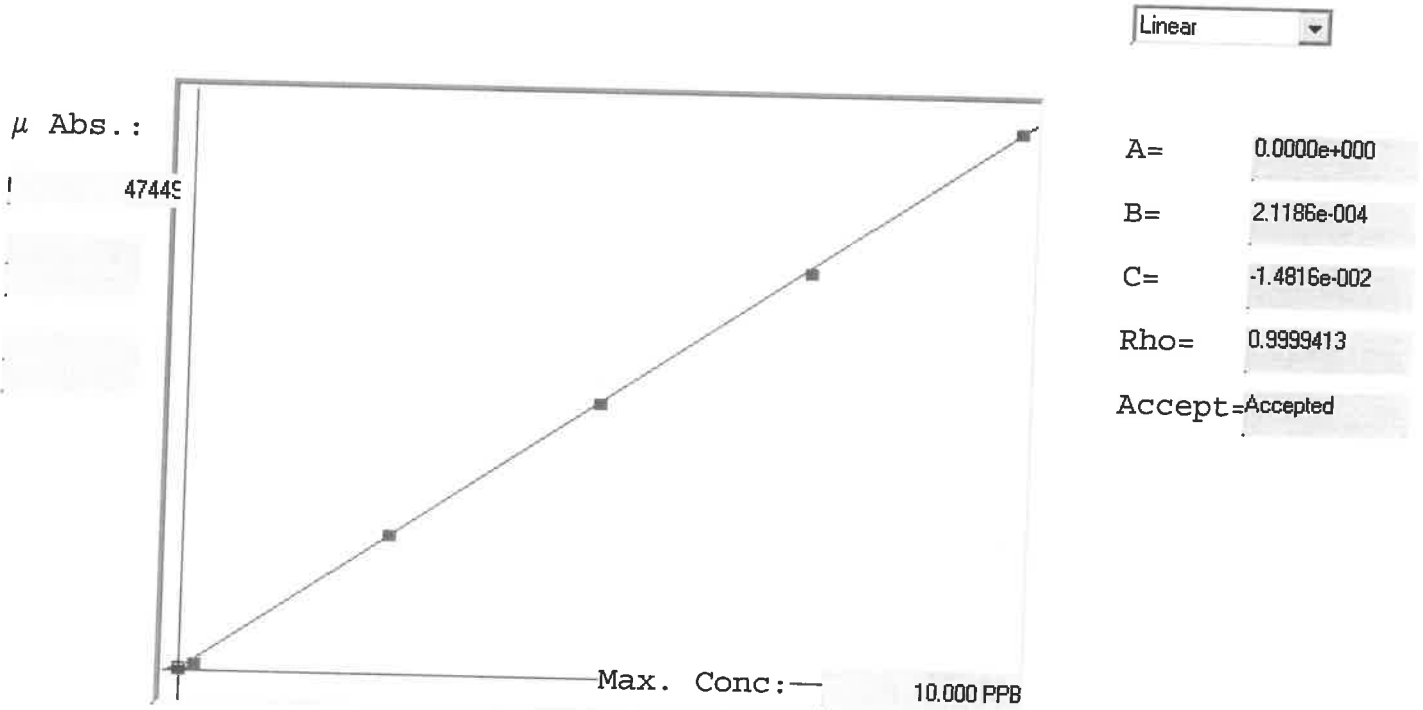


LB 134537

7470A

INSTRUMENT: CY 1



Std ID	Conc.	Calc.	Dev.	Mean	SD or %RSD	Rep 1	Rep 2	Rep 3	Rep 4	Rep 5	OLD
0.0	0.000	0.033	0.033	226	0.000	226	0				0.00
0.2	0.200	0.156	-0.044	807	0.0 %	807					-22
2.5	2.500	2.535	0.035	12037	0.0 %	12037					1
5.0	5.000	5.000	-0.000	23669	0.0 %	23669					0
7.5	7.500	7.438	-0.062	35176	0.0 %	35176					-1
10.0	10.000	10.038	0.038	47449	0.0 %	47449					0

# LB134537 INSTRUMENT ID : CV1

Method: 7470A

Operator: Admin

Date of Analysis: 03 Feb 2025 15:33:04

Sample ID	Extended ID	μ Abs.	Conc.	Std Conc	Method	Units	Date	Type	Type
0.0 - 1	50	226	-	0.0000	7470A	PPB	03 Feb 2025 15:35:03	S	Std
0.2 - 1	50.2	807	-	0.2000	7470A	PPB	03 Feb 2025 15:37:20	S	Std
2.5 - 1	52.5	12037	-	2.5000	7470A	PPB	03 Feb 2025 15:41:39	S	Std
5.0 - 1	55	23669	-	5.0000	7470A	PPB	03 Feb 2025 15:43:55	S	Std
7.5 - 1	59.5	35176	-	7.5000	7470A	PPB	03 Feb 2025 15:46:13	S	Std
10.0 - 1	711	47449	-	10.0000	7470A	PPB	03 Feb 2025 15:54:16	S	Std
ICV81 - 1	ICV81	17473	3.6871	-	7470A	PPB	03 Feb 2025 15:59:27	U	SMPL
ICB81 - 1	ICB81	110	0.0085	-	7470A	PPB	03 Feb 2025 16:01:42	U	SMPL
CCV10 - 1	CCV10	23707	5.0078	-	7470A	PPB	03 Feb 2025 16:03:58	U	SMPL
CCB10 - 1	CCB10	109	0.0083	-	7470A	PPB	03 Feb 2025 16:06:13	U	SMPL
CRA - 1	CRA	1296	0.2598	-	7470A	PPB	03 Feb 2025 16:08:30	U	SMPL
HighStd - 1	HighStd	46943	9.9307	-	7470A	PPB	03 Feb 2025 16:10:45	U	SMPL
ChkStd - 1	ChkStd	32540	6.8792	-	7470A	PPB	03 Feb 2025 16:13:00	U	SMPL
PB166487BL - 1	PBW	-178	-0.0525	-	7470A	PPB	03 Feb 2025 16:15:19	U	SMPL
PB166487BS - 1	LCSW	19423	4.1002	-	7470A	PPB	03 Feb 2025 16:20:08	U	SMPL
Q1215-04 - 1	JPP-29.1-012825	115	0.0095	-	7470A	PPB	03 Feb 2025 16:22:25	U	SMPL
Q1215-08 - 1	JPP-29.2-012825	322	0.0534	-	7470A	PPB	03 Feb 2025 16:24:44	U	SMPL
Q1216-04 - 1	JPP-18.1-012825	292	0.0470	-	7470A	PPB	03 Feb 2025 16:27:00	U	SMPL
Q1216-08 - 1	JPP-21.1-012825	262	0.0407	-	7470A	PPB	03 Feb 2025 16:29:18	U	SMPL
Q1216-12 - 1	JPP-21.2-012825	327	0.0545	-	7470A	PPB	03 Feb 2025 16:31:34	U	SMPL
CCV11 - 1	CCV11	24341	5.1422	-	7470A	PPB	03 Feb 2025 16:33:49	U	SMPL
CCB11 - 1	CCB11	24	-0.0097	-	7470A	PPB	03 Feb 2025 16:36:04	U	SMPL
Q1216-16 - 1	JPP-26.1-012825	421	0.0744	-	7470A	PPB	03 Feb 2025 16:38:21	U	SMPL
Q1216-20 - 1	JPP-26.2-012825	650	0.1229	-	7470A	PPB	03 Feb 2025 16:40:37	U	SMPL
Q1218-02 - 1	BELL-25-002	748	0.1437	-	7470A	PPB	03 Feb 2025 16:42:52	U	SMPL
Q1219-02 - 1	LAW-25-0015	573	0.1066	-	7470A	PPB	03 Feb 2025 16:45:07	U	SMPL
Q1221-02 - 1	CHESTNUT-CONCRETE	310	0.0509	-	7470A	PPB	03 Feb 2025 16:47:24	U	SMPL
Q1232-04 - 1	JPP-46.2-012925	416	0.0733	-	7470A	PPB	03 Feb 2025 16:49:40	U	SMPL
Q1232-08 - 1	JPP-46.1-012925	398	0.0695	-	7470A	PPB	03 Feb 2025 16:51:56	U	SMPL
Q1232-12 - 1	JPP-42.1-012925	334	0.0559	-	7470A	PPB	03 Feb 2025 16:54:13	U	SMPL
Q1232-16 - 1	JPP-42.2-012925	268	0.0420	-	7470A	PPB	03 Feb 2025 16:56:30	U	SMPL
Q1232-20 - 1	JPP-51.1-012925	155	0.0180	-	7470A	PPB	03 Feb 2025 16:58:47	U	SMPL
CCV12 - 1	CCV12	23574	4.9797	-	7470A	PPB	03 Feb 2025 17:01:02	U	SMPL
CCB12 - 1	CCB12	103	0.0070	-	7470A	PPB	03 Feb 2025 17:03:18	U	SMPL
Q1235-04 - 1	JPP-51.2-012925	155	0.0180	-	7470A	PPB	03 Feb 2025 17:05:35	U	SMPL
Q1235-08 - 1	JPP-16.1-012925	202	0.0280	-	7470A	PPB	03 Feb 2025 17:07:51	U	SMPL
Q1235-08DUP - 1	JPP-16.1-012925DUP	344	0.0581	-	7470A	PPB	03 Feb 2025 17:10:06	U	SMPL
Q1235-08MS - 1	JPP-16.1-012925MS	20940	4.4216	-	7470A	PPB	03 Feb 2025 17:12:22	U	SMPL
Q1235-08MSD - 1	JPP-16.1-012925MSD	19521	4.1210	-	7470A	PPB	03 Feb 2025 17:14:38	U	SMPL
PB16+6356TB - 1		-9	-0.0167	-	7470A	PPB	03 Feb 2025 17:16:56	U	SMPL
Q1235-08LX5 - 1		89	0.0040	-	7470A	PPB	03 Feb 2025 17:19:14	U	SMPL
Q1235-08A - 1		17947	3.7875	-	7470A	PPB	03 Feb 2025 17:21:31	U	SMPL
CCV13 - 1	CCV13	23619	4.9892	-	7470A	PPB	03 Feb 2025 17:23:49	U	SMPL
CCB13 - 1	CCB13	71	0.0002	-	7470A	PPB	03 Feb 2025 17:26:06	U	SMPL