

Data Path : Z:\pestpcbsrv\HPCHEM1\ECD\_L\Data\PL012125\  
 Data File : PL093730.D  
 Signal(s) : Signal #1: ECD1A.ch Signal #2: ECD2B.ch  
 Acq On : 21 Jan 2025 11:24  
 Operator : AR\AJ  
 Sample : PSTDICC050  
 Misc :  
 ALS Vial : 7 Sample Multiplier: 1

Instrument :  
 ECD\_L  
 ClientSampleId :  
 PSTDICC050

Integration File signal 1: autoint1.e  
 Integration File signal 2: autoint2.e  
 Quant Time: Jan 21 13:53:13 2025  
 Quant Method : Z:\pestpcbsrv\HPCHEM1\ECD\_L\methods\PL012125.M  
 Quant Title : GC Extractables  
 QLast Update : Tue Jan 21 13:52:59 2025  
 Response via : Initial Calibration  
 Integrator: ChemStation

Volume Inj. : 1 µl  
 Signal #1 Phase : ZB-MR2 Signal #2 Phase: ZB-MR2  
 Signal #1 Info : 30M x 0.32mm x0.5 Signal #2 Info : 30M x 0.32mm x0.25µm

Compound	RT#1	RT#2	Resp#1	Resp#2	ng/ml	ng/ml
-----						
System Monitoring Compounds						
1) SA Tetrachlo...	3.539	2.774	137.0E6	171.9E6	50.000	50.000
28) SA Decachlor...	9.053	7.910	104.9E6	181.4E6	50.000	50.000
Target Compounds						
2) A alpha-BHC	3.995	3.277	195.9E6	263.6E6	50.000	50.000
3) MA gamma-BHC...	4.327	3.607	188.4E6	254.2E6	50.000	50.000
4) MA Heptachlor	4.914	3.945	166.3E6	246.2E6	50.000	50.000
5) MB Aldrin	5.256	4.225	164.6E6	242.8E6	50.000	50.000
6) B beta-BHC	4.525	3.907	80914447	103.6E6	50.000	50.000
7) B delta-BHC	4.772	4.136	180.3E6	254.9E6	50.000	50.000
8) B Heptachlo...	5.682	4.727	147.7E6	221.2E6	50.000	50.000
9) A Endosulfan I	6.067	5.096	131.9E6	205.0E6	50.000	50.000
10) B gamma-Chl...	5.938	4.977	140.8E6	224.2E6	50.000	50.000
11) B alpha-Chl...	6.017	5.040	139.4E6	221.2E6	50.000	50.000
12) B 4,4'-DDE	6.191	5.230	124.5E6	212.7E6	50.000	50.000
13) MA Dieldrin	6.343	5.361	139.4E6	227.7E6	50.000	50.000
14) MA Endrin	6.572	5.636	118.2E6	193.5E6	50.000	50.000
15) B Endosulfa...	6.792	5.931	120.7E6	195.6E6	50.000	50.000
16) A 4,4'-DDD	6.708	5.784	96633741	169.0E6	50.000	50.000
17) MA 4,4'-DDT	7.022	6.034	100.8E6	177.1E6	50.000	50.000
18) B Endrin al...	6.923	6.110	97948460	159.2E6	50.000	50.000
19) B Endosulfa...	7.157	6.333	112.4E6	187.9E6	50.000	50.000
20) A Methoxychlor	7.498	6.609	54018493	93520516	50.000	50.000
21) B Endrin ke...	7.642	6.839	127.0E6	220.0E6	50.000	50.000
22) Mirex	8.115	7.018	103.3E6	173.7E6	50.000	50.000

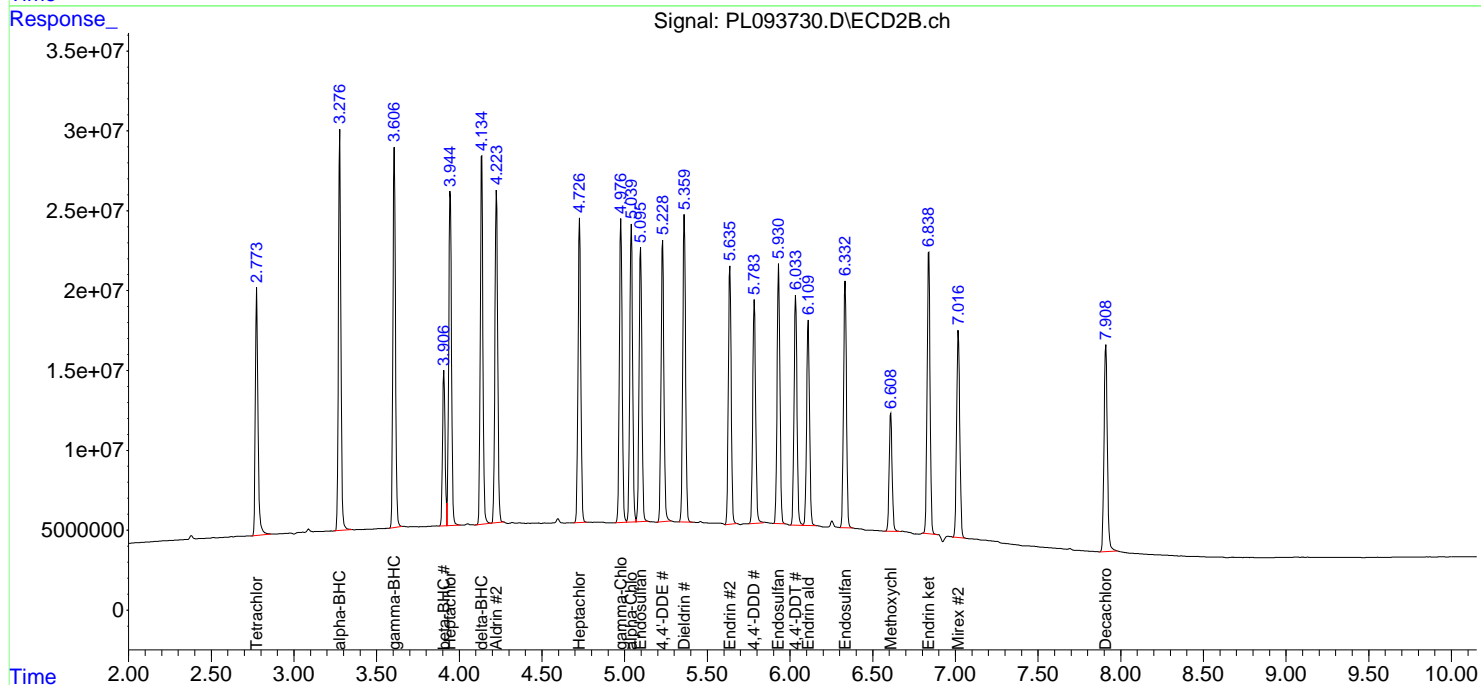
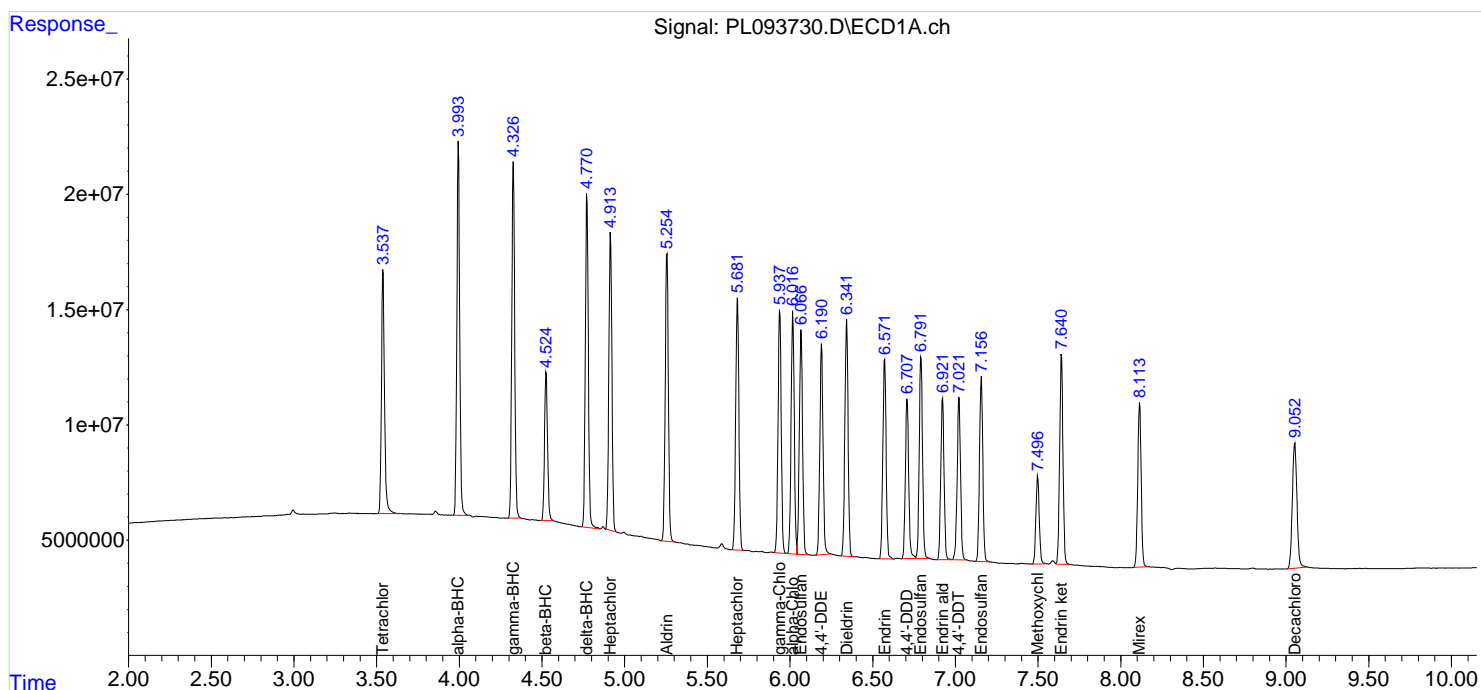
(f)=RT Delta > 1/2 Window (#)=Amounts differ by > 25% (m)=manual int.

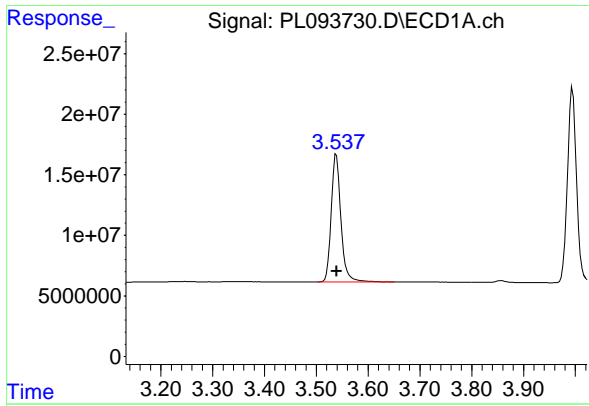
Data Path : Z:\pestpcbsrv\HPCHEM1\ECD\_L\Data\PL012125\  
 Data File : PL093730.D  
 Signal(s) : Signal #1: ECD1A.ch Signal #2: ECD2B.ch  
 Acq On : 21 Jan 2025 11:24  
 Operator : AR\AJ  
 Sample : PSTDICC050  
 Misc :  
 ALS Vial : 7 Sample Multiplier: 1

Instrument :  
 ECD\_L  
 ClientSampleId :  
 PSTDICC050

Integration File signal 1: autoint1.e  
 Integration File signal 2: autoint2.e  
 Quant Time: Jan 21 13:53:13 2025  
 Quant Method : Z:\pestpcbsrv\HPCHEM1\ECD\_L\methods\PL012125.M  
 Quant Title : GC Extractables  
 QLast Update : Tue Jan 21 13:52:59 2025  
 Response via : Initial Calibration  
 Integrator: ChemStation

Volume Inj. : 1 µl  
 Signal #1 Phase : ZB-MR1 Signal #2 Phase: ZB-MR2  
 Signal #1 Info : 30M x 0.32mm x0.5 Signal #2 Info : 30M x 0.32mm x0.25µm

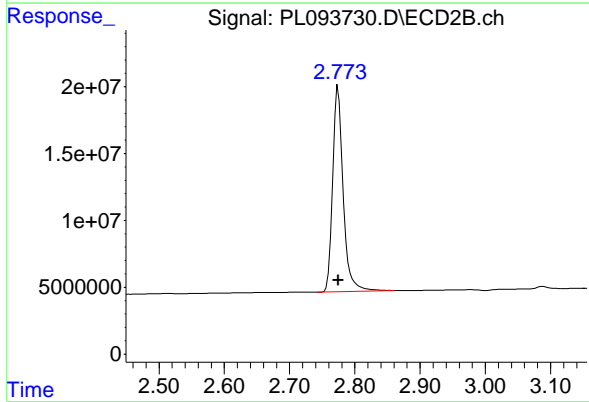




#1 Tetrachloro-m-xylene

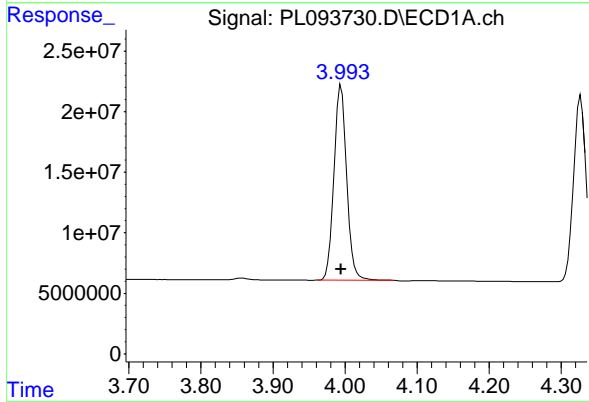
R.T.: 3.539 min  
 Delta R.T.: 0.000 min  
 Response: 137001991  
 Conc: 50.00 ng/ml

Instrument :  
 ECD\_L  
 ClientSampleId :  
 PSTDICC050



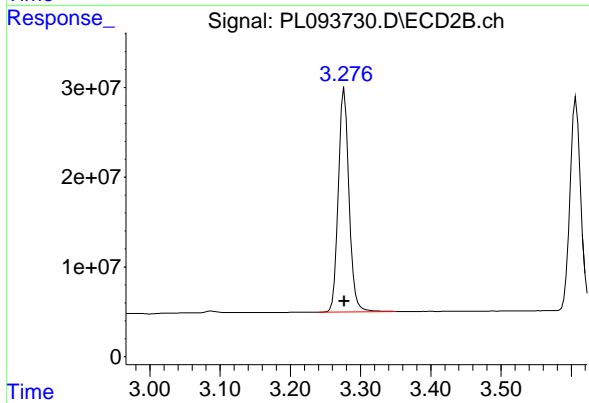
#1 Tetrachloro-m-xylene

R.T.: 2.774 min  
 Delta R.T.: 0.000 min  
 Response: 171861595  
 Conc: 50.00 ng/ml



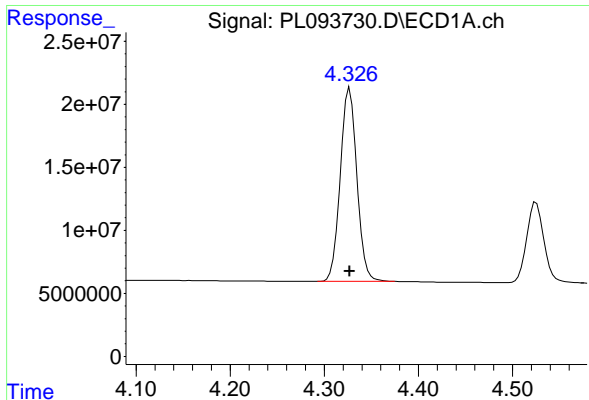
#2 alpha-BHC

R.T.: 3.995 min  
 Delta R.T.: 0.000 min  
 Response: 195905536  
 Conc: 50.00 ng/ml



#2 alpha-BHC

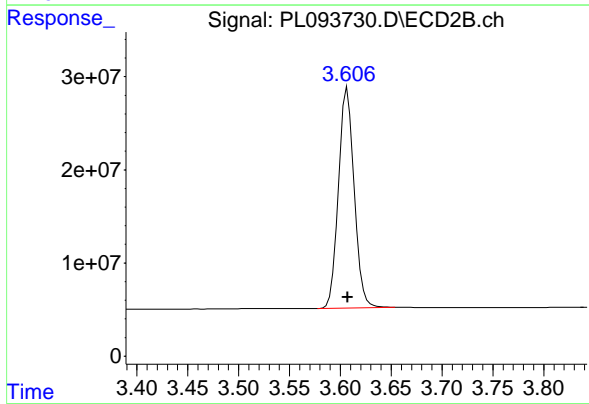
R.T.: 3.277 min  
 Delta R.T.: 0.000 min  
 Response: 263554029  
 Conc: 50.00 ng/ml



#3 gamma-BHC (Lindane)

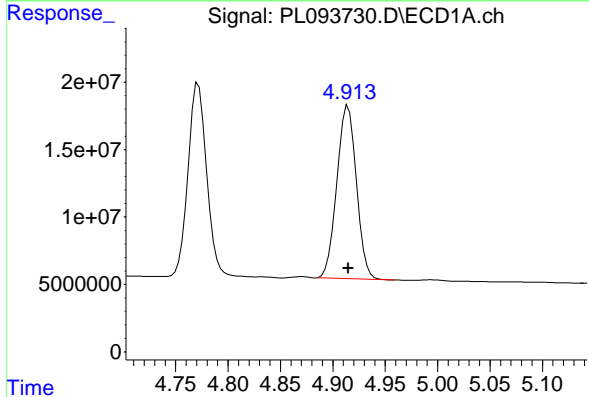
R.T.: 4.327 min  
 Delta R.T.: 0.000 min  
 Response: 188362613  
 Conc: 50.00 ng/ml

Instrument :  
 ECD\_L  
 ClientSampleId :  
 PSTDICC050



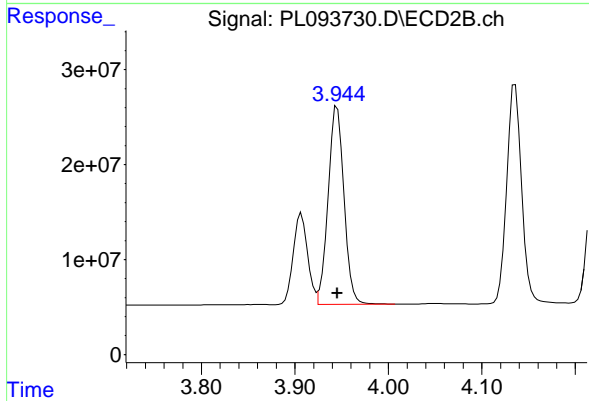
#3 gamma-BHC (Lindane)

R.T.: 3.607 min  
 Delta R.T.: 0.000 min  
 Response: 254230505  
 Conc: 50.00 ng/ml



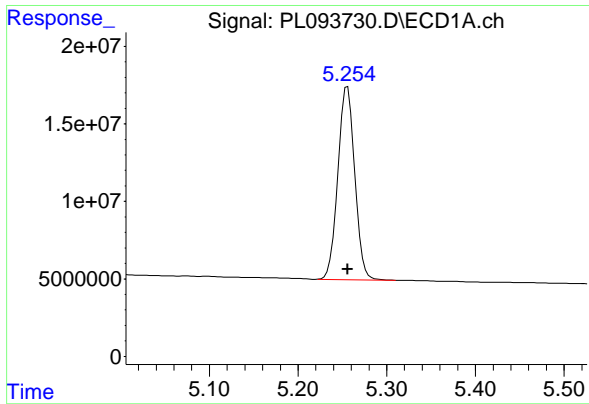
#4 Heptachlor

R.T.: 4.914 min  
 Delta R.T.: 0.000 min  
 Response: 166264355  
 Conc: 50.00 ng/ml



#4 Heptachlor

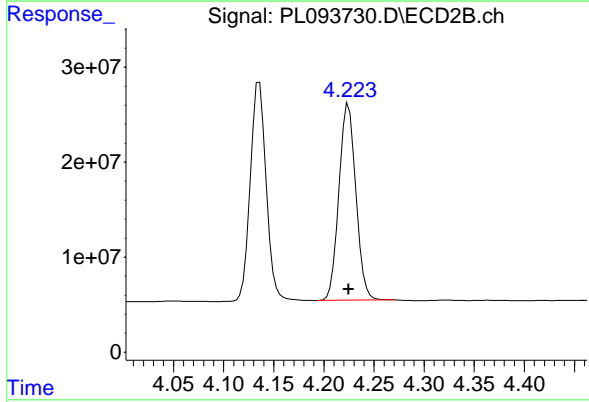
R.T.: 3.945 min  
 Delta R.T.: 0.000 min  
 Response: 246242003  
 Conc: 50.00 ng/ml



#5 Aldrin

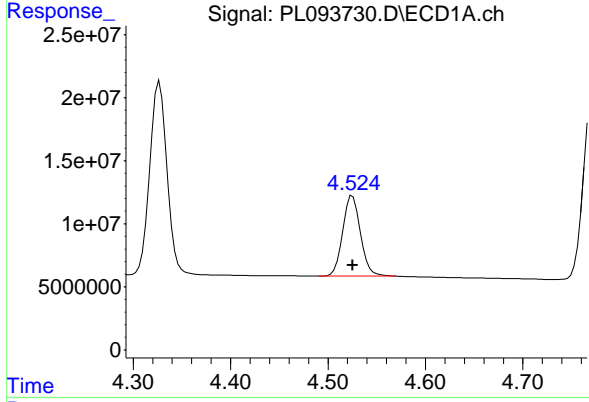
R.T.: 5.256 min  
 Delta R.T.: 0.000 min  
 Response: 164631568  
 Conc: 50.00 ng/ml

Instrument :  
 ECD\_L  
 ClientSampleId :  
 PSTDICC050



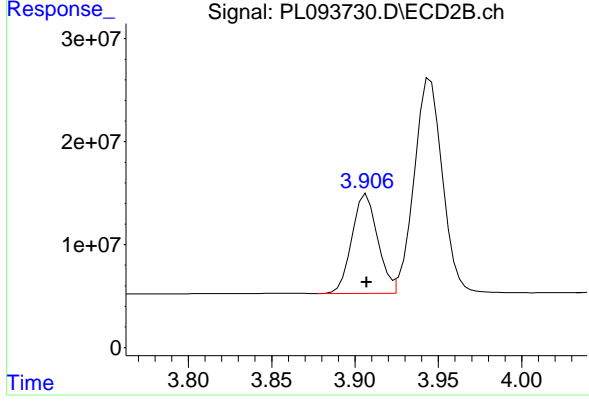
#5 Aldrin

R.T.: 4.225 min  
 Delta R.T.: 0.000 min  
 Response: 242826175  
 Conc: 50.00 ng/ml



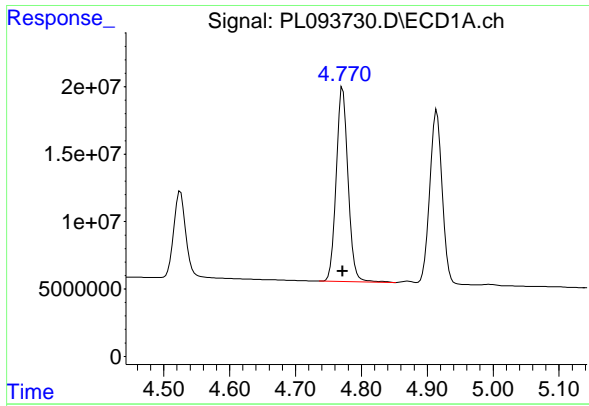
#6 beta-BHC

R.T.: 4.525 min  
 Delta R.T.: 0.000 min  
 Response: 80914447  
 Conc: 50.00 ng/ml



#6 beta-BHC

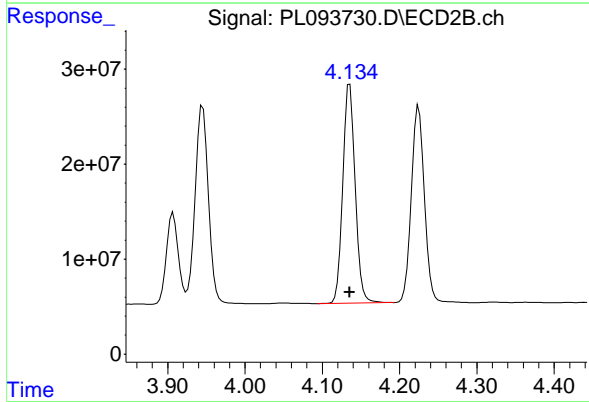
R.T.: 3.907 min  
 Delta R.T.: 0.000 min  
 Response: 103608976  
 Conc: 50.00 ng/ml



#7 delta-BHC

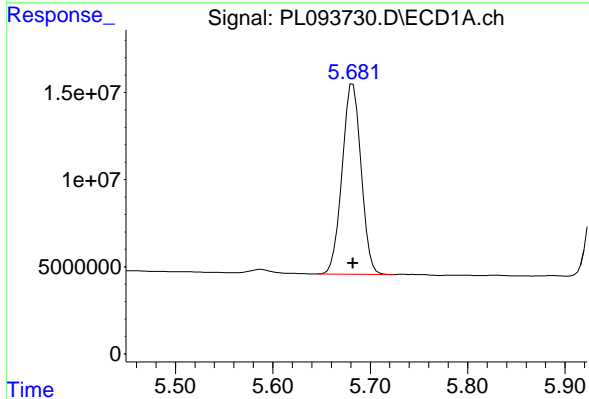
R.T.: 4.772 min  
 Delta R.T.: 0.000 min  
 Response: 180293977  
 Conc: 50.00 ng/ml

Instrument :  
 ECD\_L  
 ClientSampleId :  
 PSTDICC050



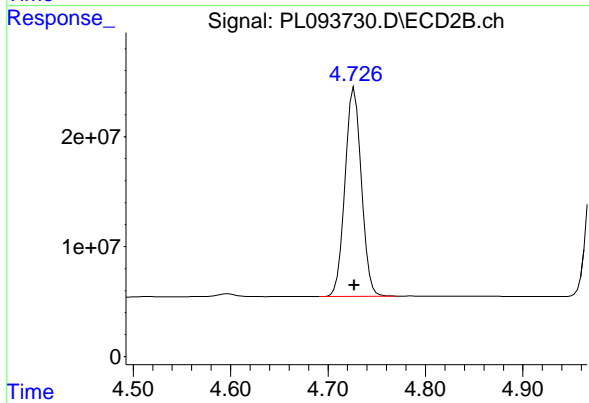
#7 delta-BHC

R.T.: 4.136 min  
 Delta R.T.: 0.000 min  
 Response: 254940473  
 Conc: 50.00 ng/ml



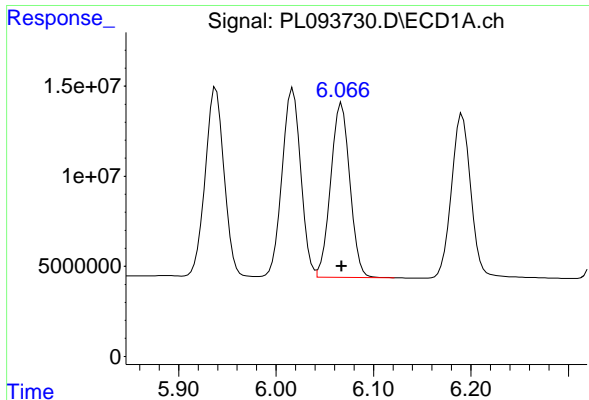
#8 Heptachlor epoxide

R.T.: 5.682 min  
 Delta R.T.: 0.000 min  
 Response: 147681633  
 Conc: 50.00 ng/ml



#8 Heptachlor epoxide

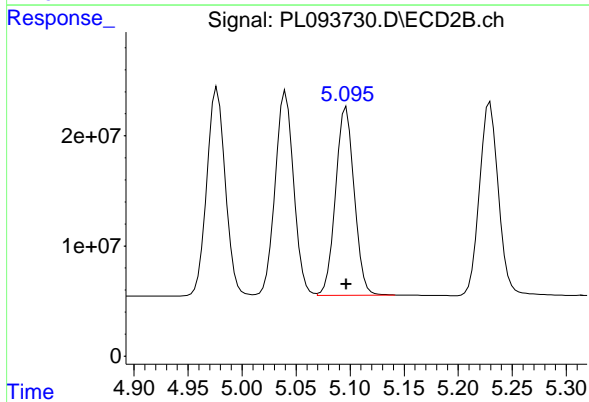
R.T.: 4.727 min  
 Delta R.T.: 0.000 min  
 Response: 221208450  
 Conc: 50.00 ng/ml



#9 Endosulfan I

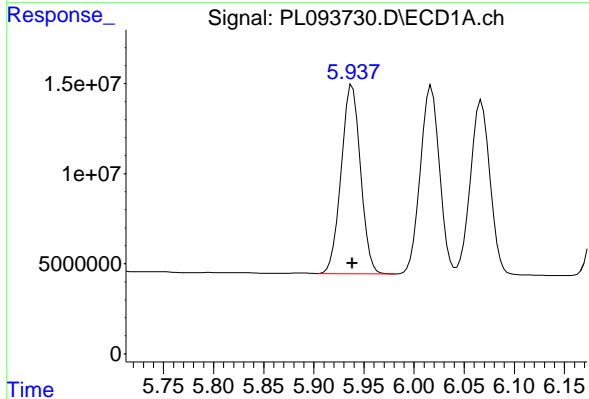
R.T.: 6.067 min  
 Delta R.T.: 0.000 min  
 Response: 131853108  
 Conc: 50.00 ng/ml

Instrument :  
 ECD\_L  
 ClientSampleId :  
 PSTDICC050



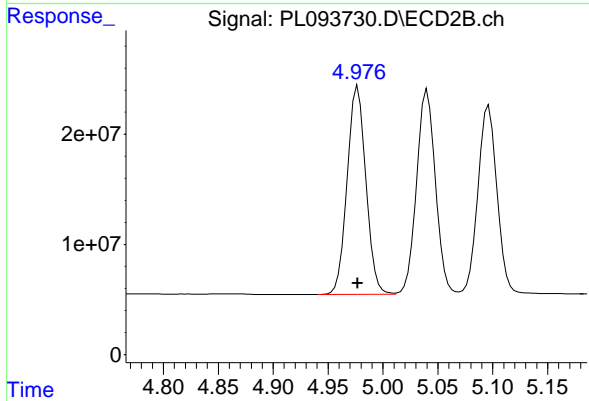
#9 Endosulfan I

R.T.: 5.096 min  
 Delta R.T.: 0.000 min  
 Response: 204951644  
 Conc: 50.00 ng/ml



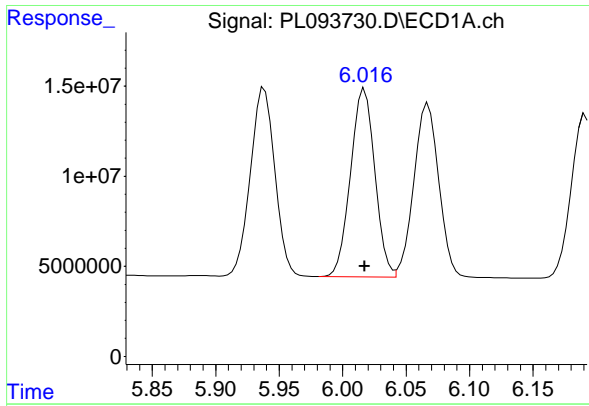
#10 gamma-Chlordane

R.T.: 5.938 min  
 Delta R.T.: 0.000 min  
 Response: 140781558  
 Conc: 50.00 ng/ml



#10 gamma-Chlordane

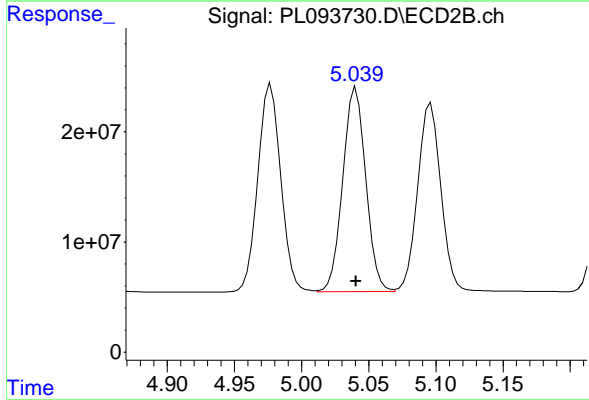
R.T.: 4.977 min  
 Delta R.T.: 0.000 min  
 Response: 224150330  
 Conc: 50.00 ng/ml



#11 alpha-Chlordane

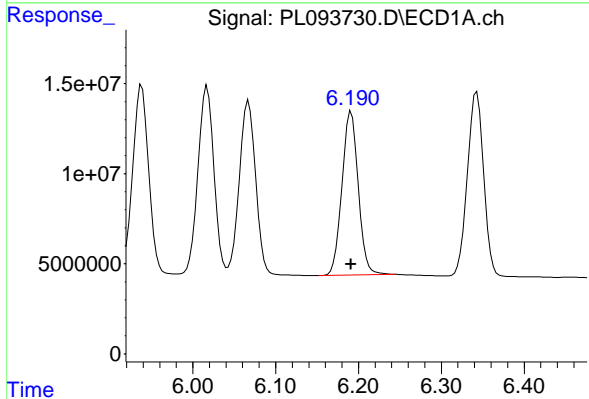
R.T.: 6.017 min  
 Delta R.T.: 0.000 min  
 Response: 139410024  
 Conc: 50.00 ng/ml

Instrument :  
 ECD\_L  
 ClientSampleId :  
 PSTDICC050



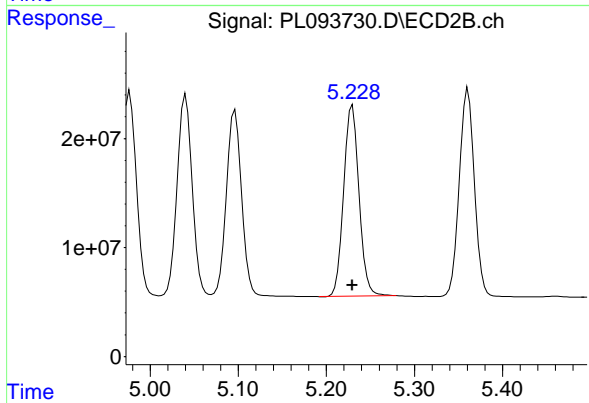
#11 alpha-Chlordane

R.T.: 5.040 min  
 Delta R.T.: 0.000 min  
 Response: 221205596  
 Conc: 50.00 ng/ml



#12 4,4'-DDE

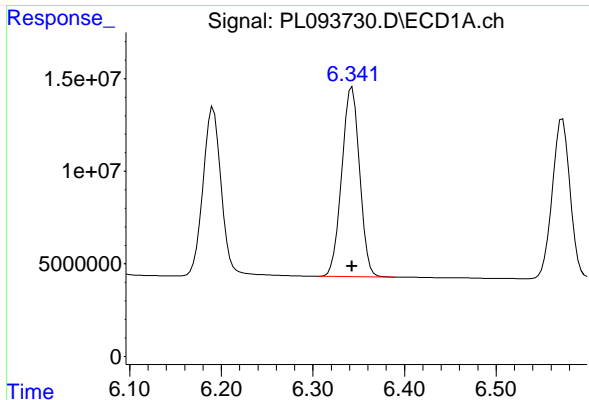
R.T.: 6.191 min  
 Delta R.T.: 0.000 min  
 Response: 124454141  
 Conc: 50.00 ng/ml



#12 4,4'-DDE

R.T.: 5.230 min  
 Delta R.T.: 0.000 min  
 Response: 212682331  
 Conc: 50.00 ng/ml

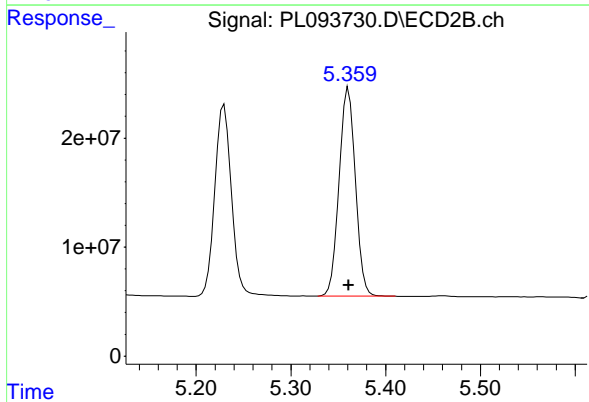




#13 Dieldrin

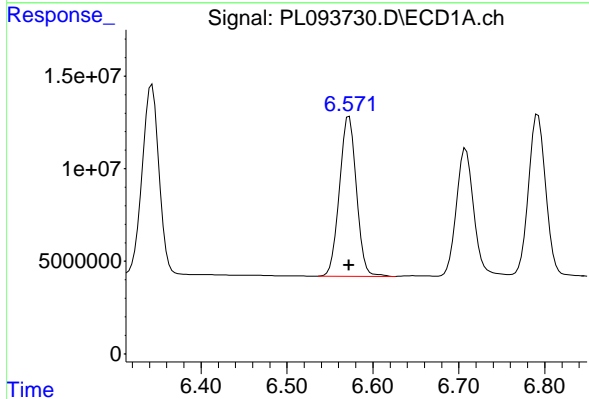
R.T.: 6.343 min  
 Delta R.T.: 0.000 min  
 Response: 139409444  
 Conc: 50.00 ng/ml

Instrument :  
 ECD\_L  
 ClientSampleId :  
 PSTDICC050



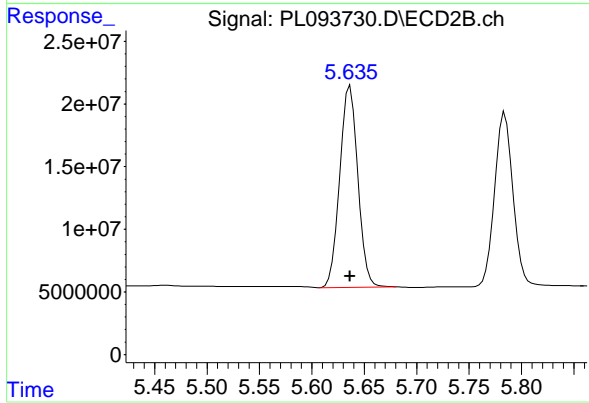
#13 Dieldrin

R.T.: 5.361 min  
 Delta R.T.: 0.000 min  
 Response: 227678389  
 Conc: 50.00 ng/ml



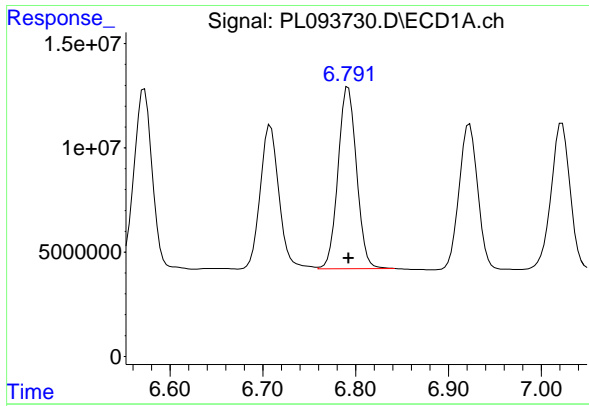
#14 Endrin

R.T.: 6.572 min  
 Delta R.T.: 0.000 min  
 Response: 118161114  
 Conc: 50.00 ng/ml



#14 Endrin

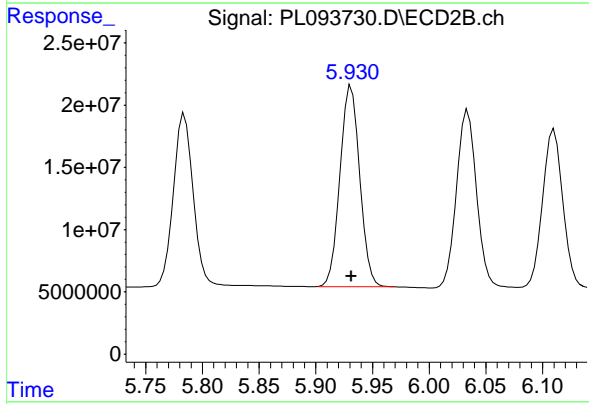
R.T.: 5.636 min  
 Delta R.T.: 0.000 min  
 Response: 193536252  
 Conc: 50.00 ng/ml



#15 Endosulfan II

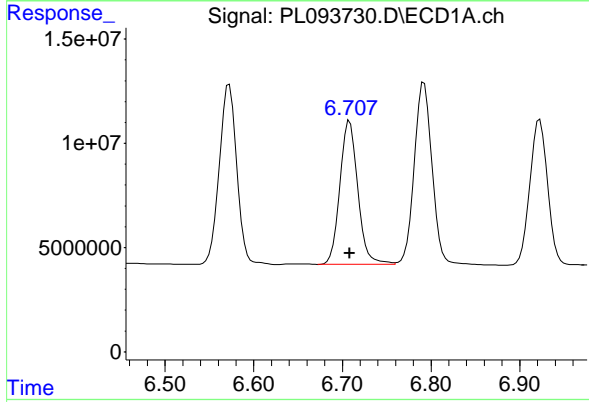
R.T.: 6.792 min  
 Delta R.T.: 0.000 min  
 Response: 120697329  
 Conc: 50.00 ng/ml

Instrument :  
 ECD\_L  
 ClientSampleId :  
 PSTDICC050



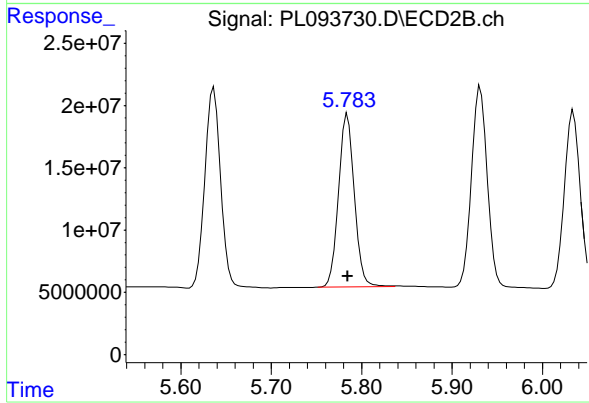
#15 Endosulfan II

R.T.: 5.931 min  
 Delta R.T.: 0.000 min  
 Response: 195648200  
 Conc: 50.00 ng/ml



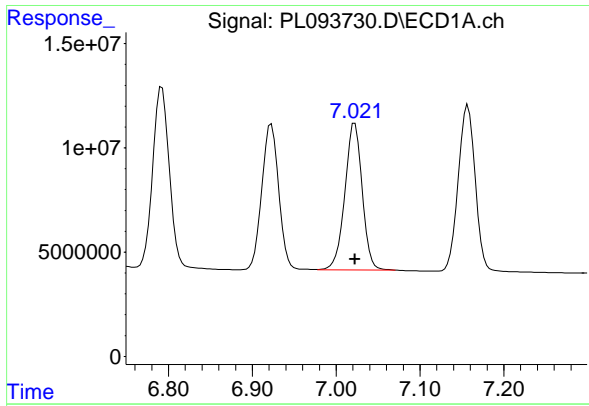
#16 4,4'-DDD

R.T.: 6.708 min  
 Delta R.T.: 0.000 min  
 Response: 96633741  
 Conc: 50.00 ng/ml



#16 4,4'-DDD

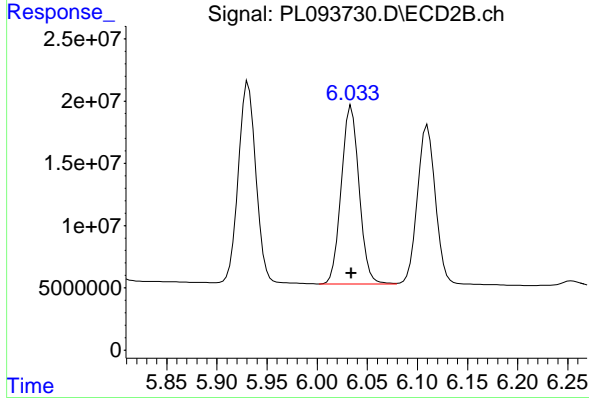
R.T.: 5.784 min  
 Delta R.T.: 0.000 min  
 Response: 168957879  
 Conc: 50.00 ng/ml



#17 4,4'-DDT

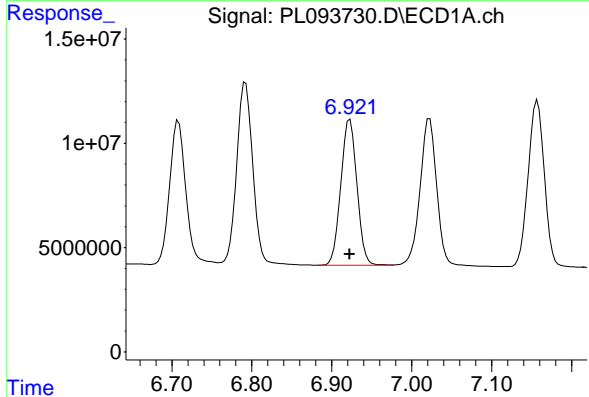
R.T.: 7.022 min  
 Delta R.T.: 0.000 min  
 Response: 100835874  
 Conc: 50.00 ng/ml

Instrument :  
 ECD\_L  
 ClientSampleId :  
 PSTDICC050



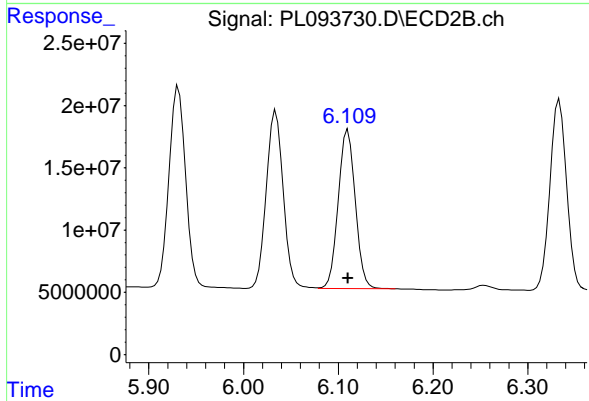
#17 4,4'-DDT

R.T.: 6.034 min  
 Delta R.T.: 0.000 min  
 Response: 177142802  
 Conc: 50.00 ng/ml



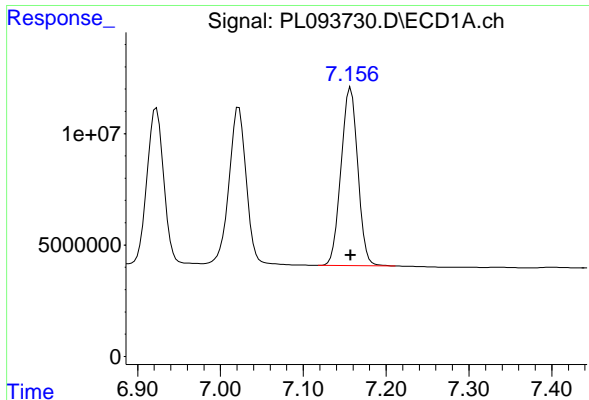
#18 Endrin aldehyde

R.T.: 6.923 min  
 Delta R.T.: 0.000 min  
 Response: 97948460  
 Conc: 50.00 ng/ml



#18 Endrin aldehyde

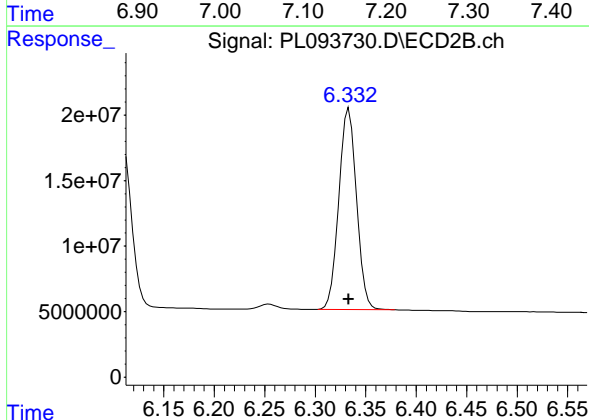
R.T.: 6.110 min  
 Delta R.T.: 0.000 min  
 Response: 159171518  
 Conc: 50.00 ng/ml



#19 Endosulfan Sulfate

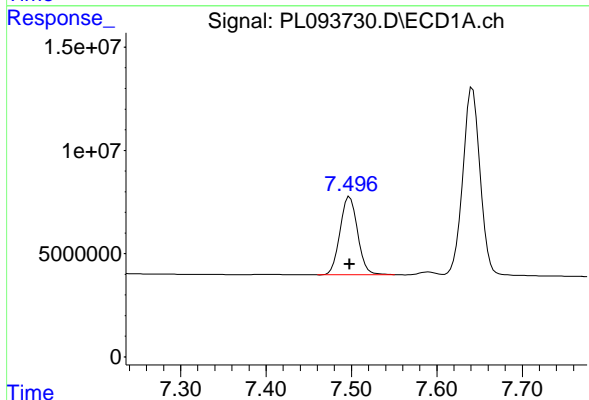
R.T.: 7.157 min  
 Delta R.T.: 0.000 min  
 Response: 112428845  
 Conc: 50.00 ng/ml

Instrument :  
 ECD\_L  
 ClientSampleId :  
 PSTDICC050



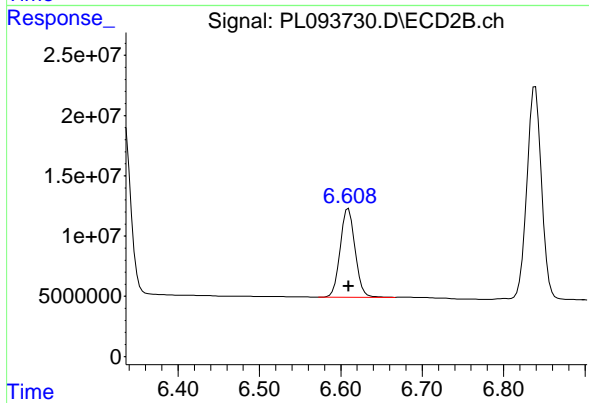
#19 Endosulfan Sulfate

R.T.: 6.333 min  
 Delta R.T.: 0.000 min  
 Response: 187851270  
 Conc: 50.00 ng/ml



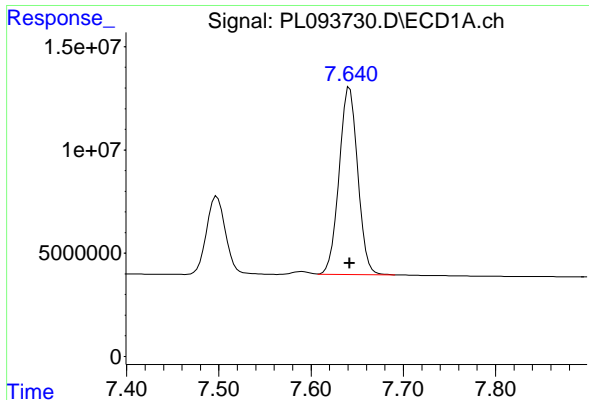
#20 Methoxychlor

R.T.: 7.498 min  
 Delta R.T.: 0.000 min  
 Response: 54018493  
 Conc: 50.00 ng/ml



#20 Methoxychlor

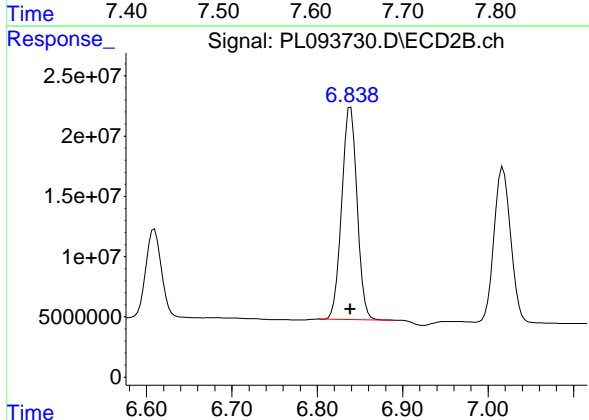
R.T.: 6.609 min  
 Delta R.T.: 0.000 min  
 Response: 93520516  
 Conc: 50.00 ng/ml



#21 Endrin ketone

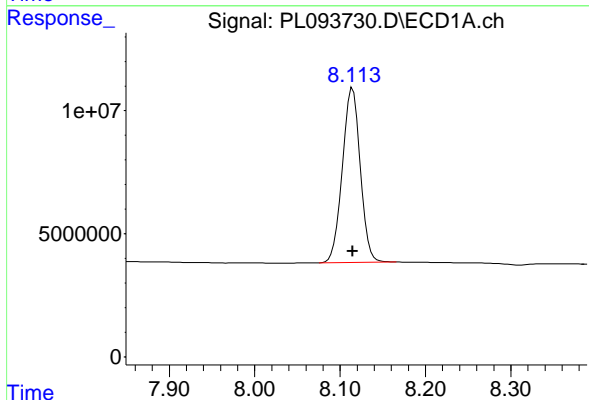
R.T.: 7.642 min  
 Delta R.T.: 0.000 min  
 Response: 126985241  
 Conc: 50.00 ng/ml

Instrument :  
 ECD\_L  
 ClientSampleId :  
 PSTDICC050



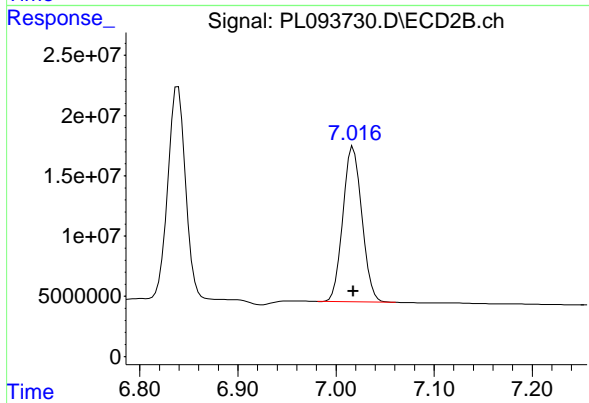
#21 Endrin ketone

R.T.: 6.839 min  
 Delta R.T.: 0.000 min  
 Response: 220004203  
 Conc: 50.00 ng/ml



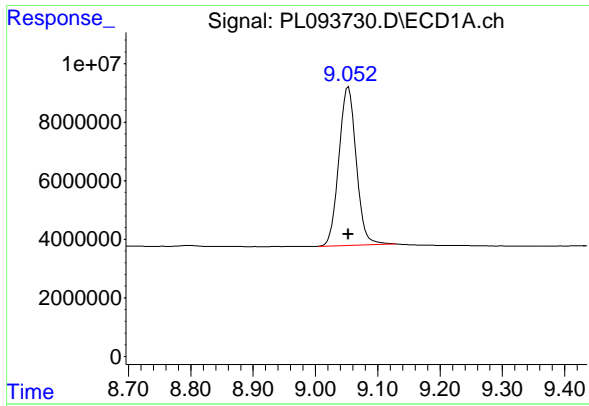
#22 Mirex

R.T.: 8.115 min  
 Delta R.T.: 0.000 min  
 Response: 103275089  
 Conc: 50.00 ng/ml



#22 Mirex

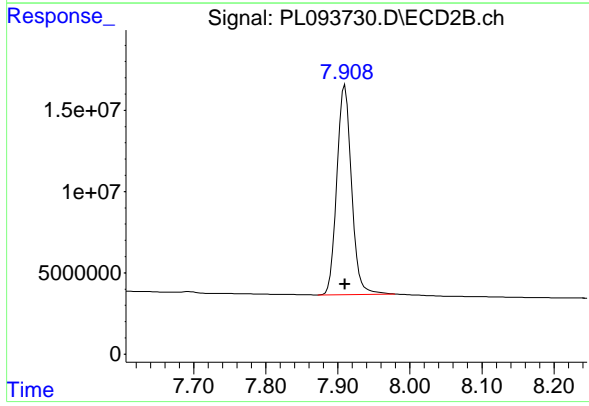
R.T.: 7.018 min  
 Delta R.T.: 0.000 min  
 Response: 173654301  
 Conc: 50.00 ng/ml



#28 Decachlorobiphenyl

R.T.: 9.053 min  
Delta R.T.: 0.000 min  
Response: 104915987  
Conc: 50.00 ng/ml

Instrument :  
ECD\_L  
ClientSampleId :  
PSTDICC050



#28 Decachlorobiphenyl

R.T.: 7.910 min  
Delta R.T.: 0.000 min  
Response: 181351234  
Conc: 50.00 ng/ml