

Data Path : Z:\pestpcbsrv\HPCHEM1\ECD_L\Data\PL013025\
 Data File : PL093918.D
 Signal(s) : Signal #1: ECD1A.ch Signal #2: ECD2B.ch
 Acq On : 30 Jan 2025 21:57
 Operator : AR\AJ
 Sample : PEM
 Misc :
 ALS Vial : 3 Sample Multiplier: 1

Instrument :
 ECD_L
ClientSampleId :
 PEM

Manual Integrations
APPROVED
 Reviewed By :Abdul Mirza 01/31/2025
 Supervised By :Ankita Jodhani 01/31/2025

Integration File signal 1: autoint1.e
 Integration File signal 2: autoint2.e
 Quant Time: Jan 31 01:41:35 2025
 Quant Method : Z:\pestpcbsrv\HPCHEM1\ECD_L\methods\PL012125.M
 Quant Title : GC Extractables
 QLast Update : Tue Jan 21 14:58:05 2025
 Response via : Initial Calibration
 Integrator: ChemStation

Volume Inj. : 1 µl
 Signal #1 Phase : ZB-MR1 Signal #2 Phase: ZB-MR2
 Signal #1 Info : 30M x 0.32mm x0.5 Signal #2 Info : 30M x 0.32mm x0.25µm

Compound	RT#1	RT#2	Resp#1	Resp#2	ng/ml	ng/ml

System Monitoring Compounds						
1) SA Tetrachlo...	3.538	2.774	57458177	68373004	21.338	20.947
28) SA Decachlor...	9.054	7.909	43574826	67555675	20.830	19.279
Target Compounds						
2) A alpha-BHC	3.993	3.276	42220098	48011639	11.012	9.820
3) MA gamma-BHC...	4.326	3.606	39520551	44834996	10.731	9.456
6) B beta-BHC	4.524	3.906	18023138	21981366	11.213	11.005
12) B 4,4'-DDE	6.190	5.229	718476	684790	0.295m	0.171m#
14) MA Endrin	6.571	5.636	94691755	163.5E6	40.383m	44.280
16) A 4,4'-DDD	6.707	5.784	19499926	27604406	10.260	8.745
17) MA 4,4'-DDT	7.022	6.034	171.2E6	314.2E6	86.838	96.557
18) B Endrin al...	6.922	6.110	6474364	9116716	3.330	2.994
20) A Methoxychlor	7.499	6.609	217.6E6	375.4E6	208.550	209.952
21) B Endrin ke...	7.641	6.837	14069698	22573808	5.577	5.381

(f)=RT Delta > 1/2 Window (#)=Amounts differ by > 25% (m)=manual int.

Data Path : Z:\pestpcbsrv\HPCHEM1\ECD_L\Data\PL013025\
 Data File : PL093918.D
 Signal(s) : Signal #1: ECD1A.ch Signal #2: ECD2B.ch
 Acq On : 30 Jan 2025 21:57
 Operator : AR\AJ
 Sample : PEM
 Misc :
 ALS Vial : 3 Sample Multiplier: 1

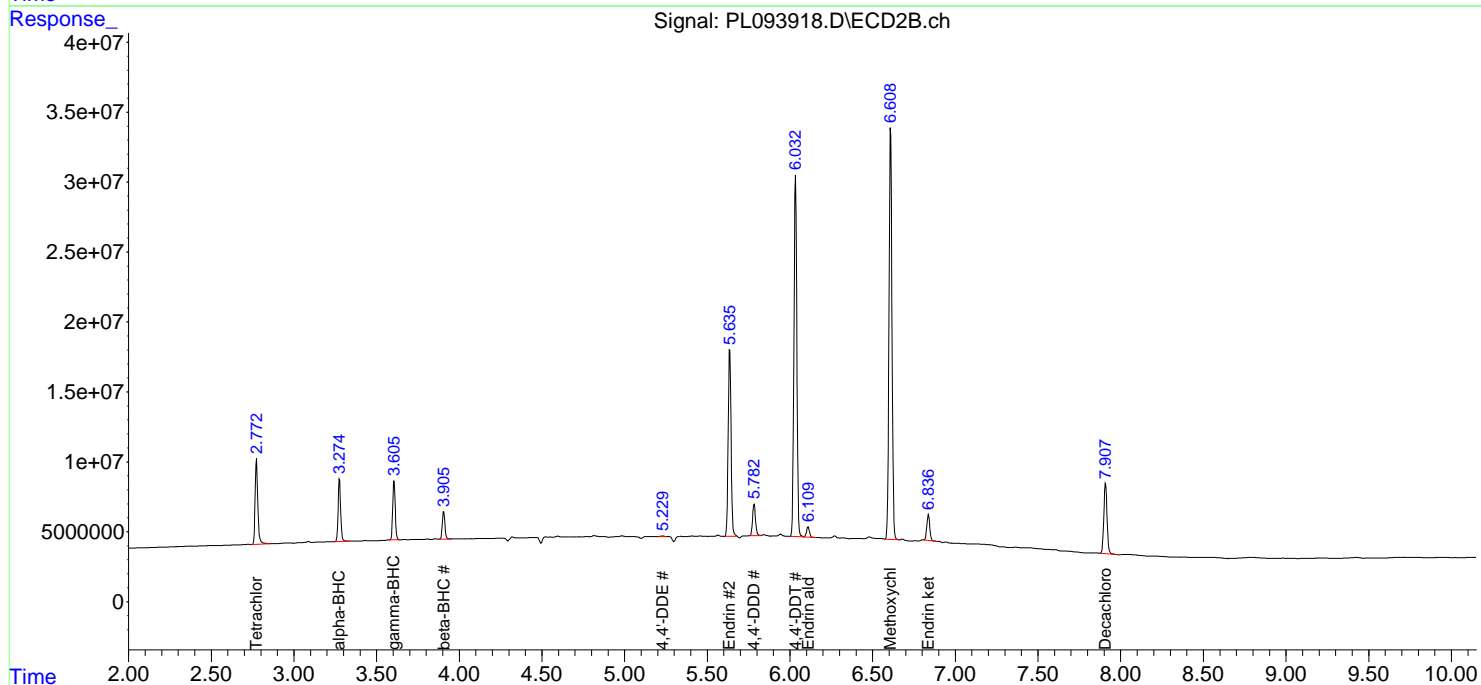
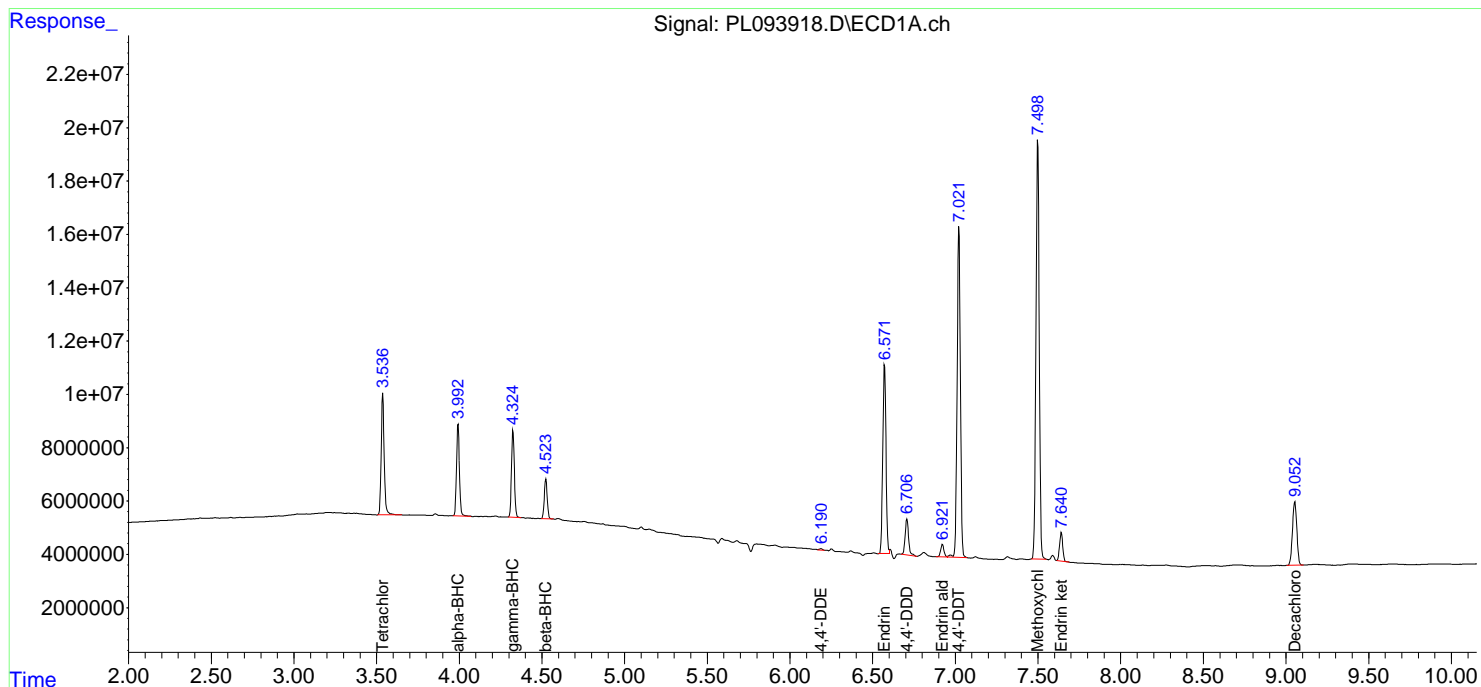
Instrument :
 ECD_L
ClientSampleId :
 PEM

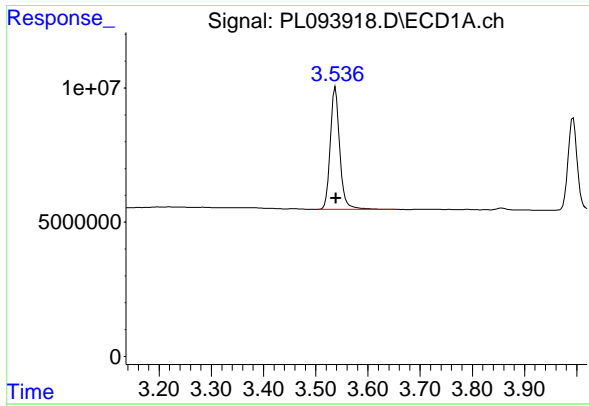
Manual Integrations
APPROVED

Reviewed By :Abdul Mirza 01/31/2025
 Supervised By :Ankita Jodhani 01/31/2025

Integration File signal 1: autoint1.e
 Integration File signal 2: autoint2.e
 Quant Time: Jan 31 01:41:35 2025
 Quant Method : Z:\pestpcbsrv\HPCHEM1\ECD_L\methods\PL012125.M
 Quant Title : GC Extractables
 QLast Update : Tue Jan 21 14:58:05 2025
 Response via : Initial Calibration
 Integrator: ChemStation

Volume Inj. : 1 µl
 Signal #1 Phase : ZB-MR1 Signal #2 Phase: ZB-MR2
 Signal #1 Info : 30M x 0.32mm x0.5 Signal #2 Info : 30M x 0.32mm x0.25µm





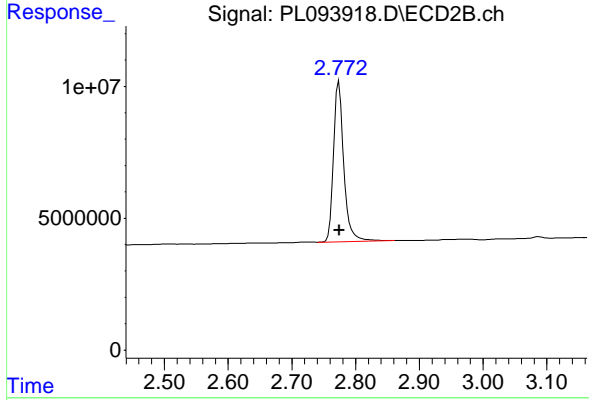
#1 Tetrachloro-m-xylene

R.T.: 3.538 min
 Delta R.T.: -0.001 min
 Response: 57458177
 Conc: 21.34 ng/ml

Instrument :
 ECD_L
 ClientSampleId :
 PEM

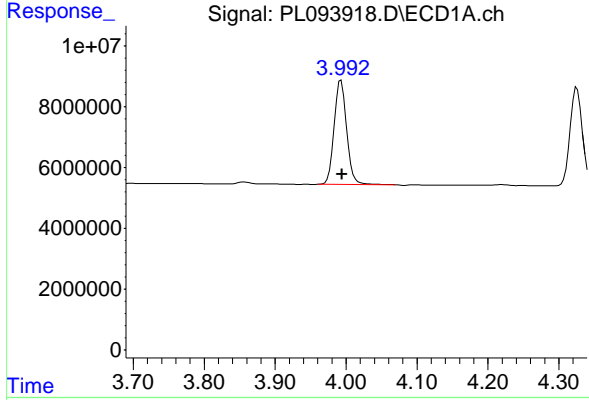
Manual Integrations
 APPROVED

Reviewed By :Abdul Mirza 01/31/2025
 Supervised By :Ankita Jodhani 01/31/2025



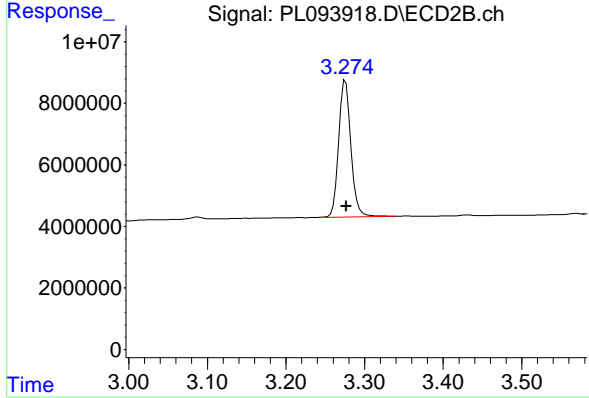
#1 Tetrachloro-m-xylene

R.T.: 2.774 min
 Delta R.T.: 0.000 min
 Response: 68373004
 Conc: 20.95 ng/ml



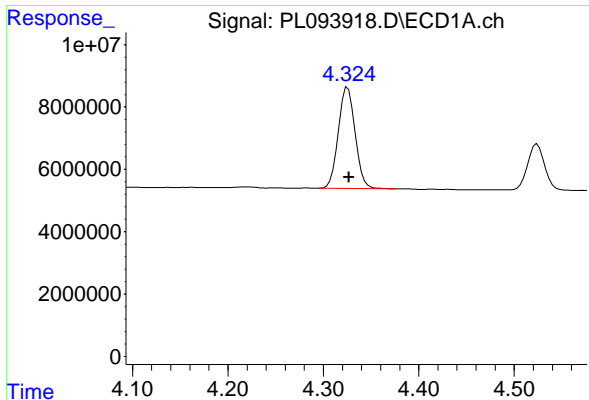
#2 alpha-BHC

R.T.: 3.993 min
 Delta R.T.: -0.001 min
 Response: 42220098
 Conc: 11.01 ng/ml



#2 alpha-BHC

R.T.: 3.276 min
 Delta R.T.: -0.001 min
 Response: 48011639
 Conc: 9.82 ng/ml



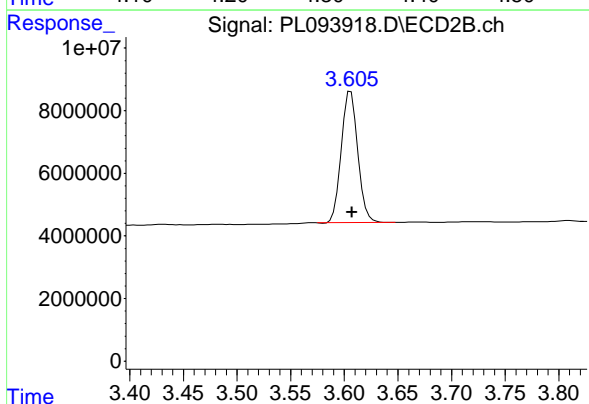
#3 gamma-BHC (Lindane)

R.T.: 4.326 min
 Delta R.T.: -0.001 min
 Response: 39520551
 Conc: 10.73 ng/ml

Instrument : ECD_L
 ClientSampleId :
 PEM

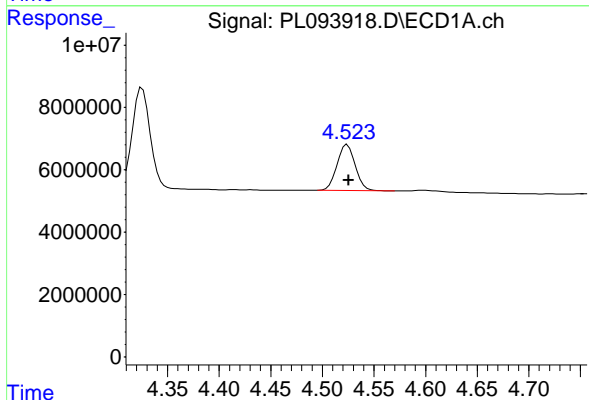
Manual Integrations
 APPROVED

Reviewed By :Abdul Mirza 01/31/2025
 Supervised By :Ankita Jodhani 01/31/2025



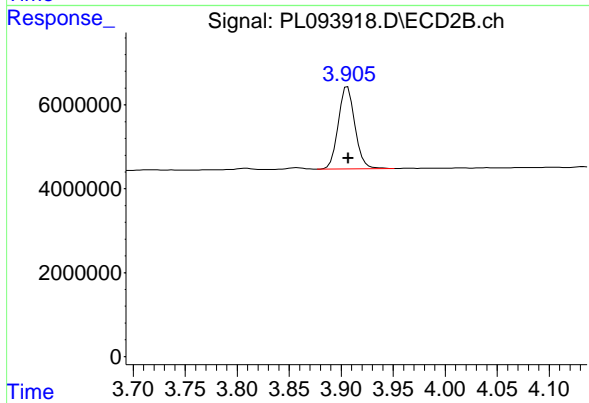
#3 gamma-BHC (Lindane)

R.T.: 3.606 min
 Delta R.T.: 0.000 min
 Response: 44834996
 Conc: 9.46 ng/ml



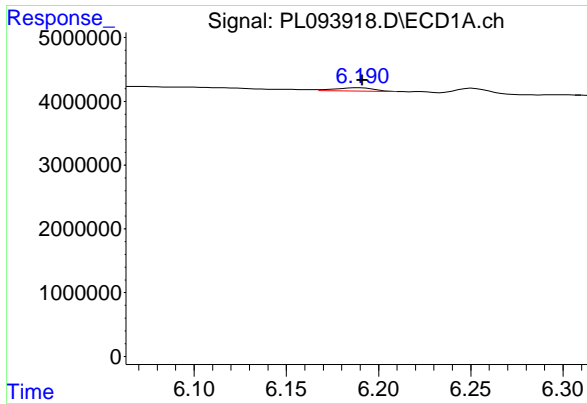
#6 beta-BHC

R.T.: 4.524 min
 Delta R.T.: -0.001 min
 Response: 18023138
 Conc: 11.21 ng/ml



#6 beta-BHC

R.T.: 3.906 min
 Delta R.T.: 0.000 min
 Response: 21981366
 Conc: 11.00 ng/ml



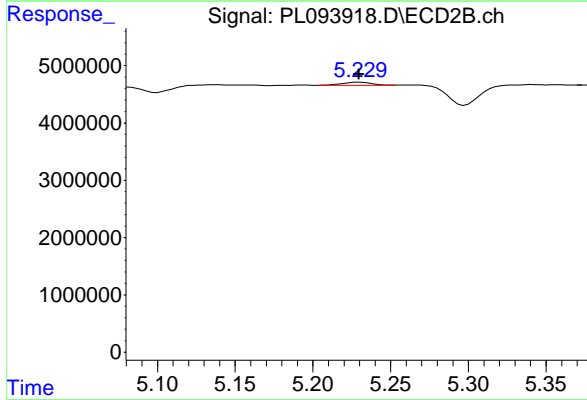
#12 4,4' -DDE

R.T.: 6.190 min
 Delta R.T.: -0.001 min
 Response: 718476
 Conc: 0.30 ng/ml

Instrument :
 ECD_L
 ClientSampleId :
 PEM

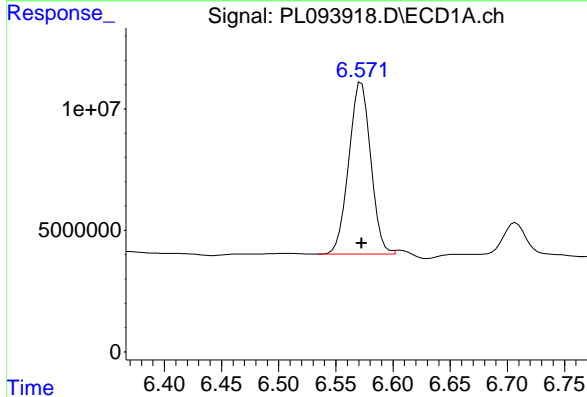
Manual Integrations
 APPROVED

Reviewed By :Abdul Mirza 01/31/2025
 Supervised By :Ankita Jodhani 01/31/2025



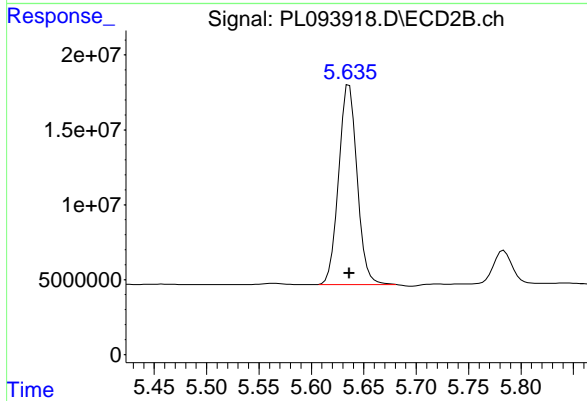
#12 4,4' -DDE

R.T.: 5.229 min
 Delta R.T.: 0.000 min
 Response: 684790
 Conc: 0.17 ng/ml m



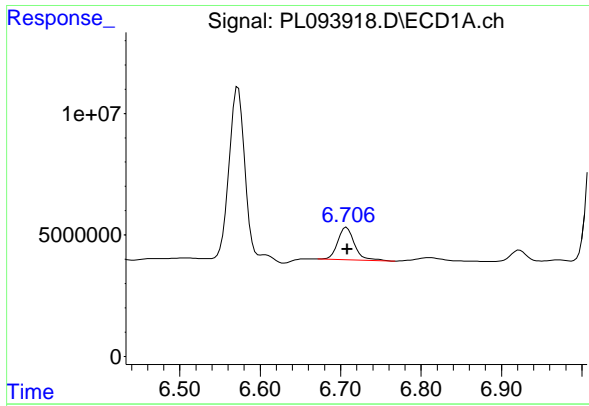
#14 Endrin

R.T.: 6.571 min
 Delta R.T.: -0.001 min
 Response: 94691755
 Conc: 40.38 ng/ml m



#14 Endrin

R.T.: 5.636 min
 Delta R.T.: 0.000 min
 Response: 163513423
 Conc: 44.28 ng/ml



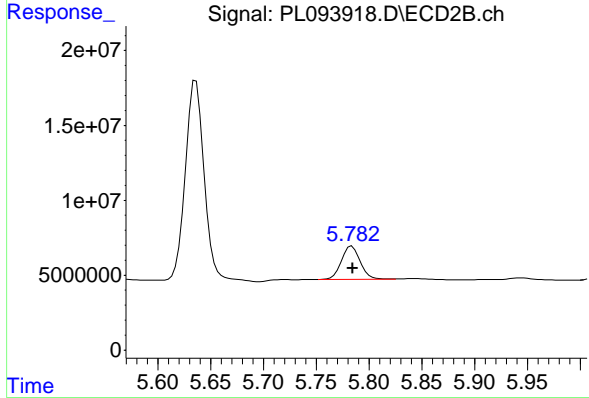
#16 4,4' -DDD

R.T.: 6.707 min
 Delta R.T.: 0.000 min
 Response: 19499926
 Conc: 10.26 ng/ml

Instrument :
 ECD_L
 ClientSampleId :
 PEM

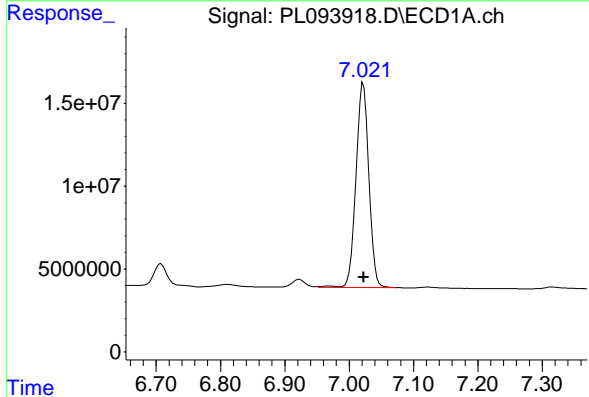
Manual Integrations
 APPROVED

Reviewed By :Abdul Mirza 01/31/2025
 Supervised By :Ankita Jodhani 01/31/2025



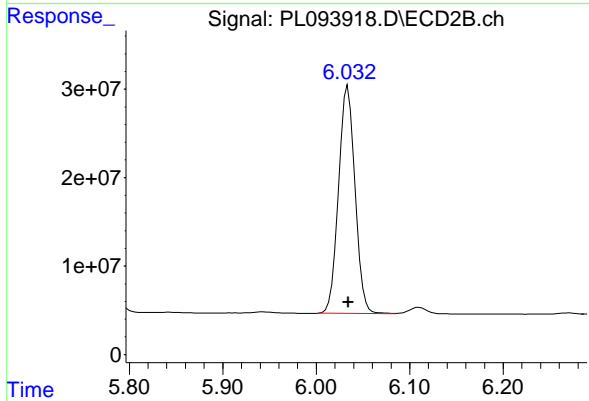
#16 4,4' -DDD

R.T.: 5.784 min
 Delta R.T.: 0.000 min
 Response: 27604406
 Conc: 8.75 ng/ml



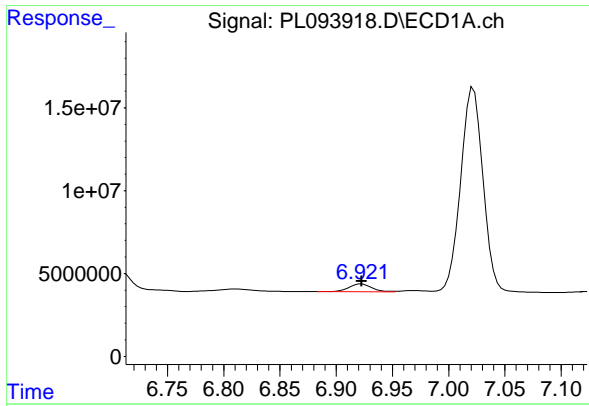
#17 4,4' -DDT

R.T.: 7.022 min
 Delta R.T.: 0.000 min
 Response: 171249591
 Conc: 86.84 ng/ml



#17 4,4' -DDT

R.T.: 6.034 min
 Delta R.T.: 0.000 min
 Response: 314199464
 Conc: 96.56 ng/ml



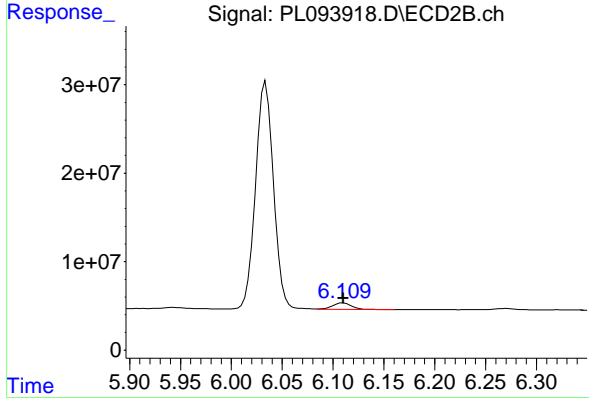
#18 Endrin aldehyde

R.T.: 6.922 min
 Delta R.T.: 0.000 min
 Response: 6474364
 Conc: 3.33 ng/ml

Instrument : ECD_L
 ClientSampleId : PEM

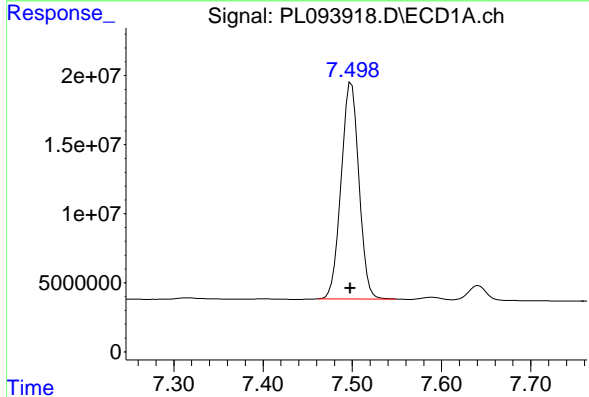
Manual Integrations
 APPROVED

Reviewed By :Abdul Mirza 01/31/2025
 Supervised By :Ankita Jodhani 01/31/2025



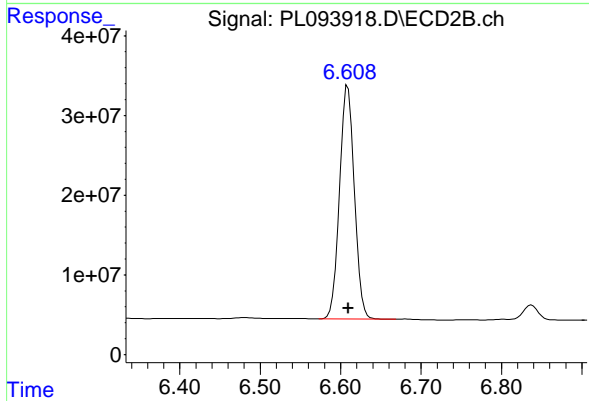
#18 Endrin aldehyde

R.T.: 6.110 min
 Delta R.T.: 0.000 min
 Response: 9116716
 Conc: 2.99 ng/ml



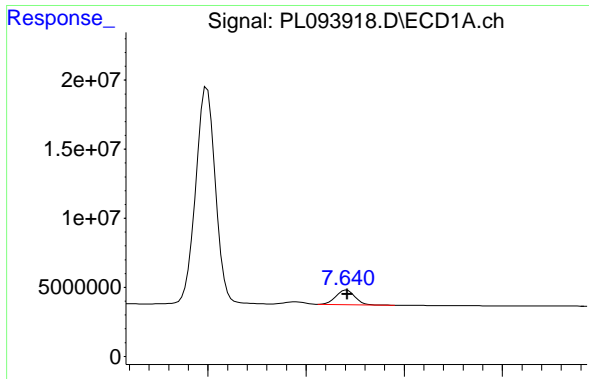
#20 Methoxychlor

R.T.: 7.499 min
 Delta R.T.: 0.001 min
 Response: 217600151
 Conc: 208.55 ng/ml



#20 Methoxychlor

R.T.: 6.609 min
 Delta R.T.: 0.000 min
 Response: 375422642
 Conc: 209.95 ng/ml



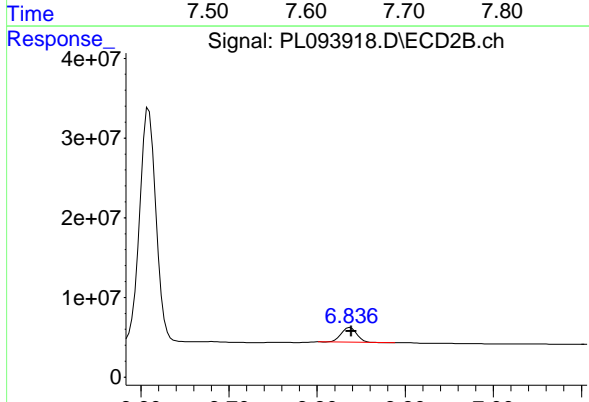
#21 Endrin ketone

R.T.: 7.641 min
 Delta R.T.: 0.000 min
 Response: 14069698
 Conc: 5.58 ng/ml

Instrument :
 ECD_L
 ClientSampleId :
 PEM

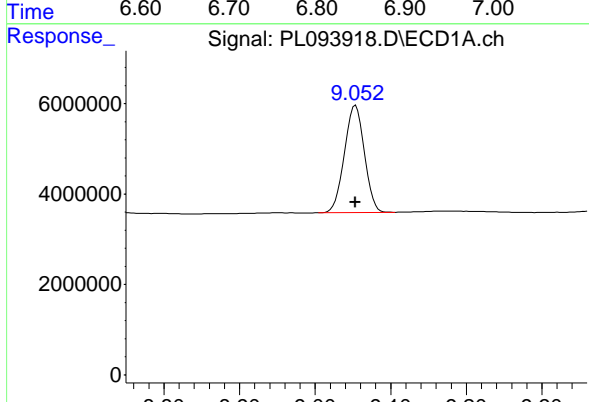
Manual Integrations
 APPROVED

Reviewed By :Abdul Mirza 01/31/2025
 Supervised By :Ankita Jodhani 01/31/2025



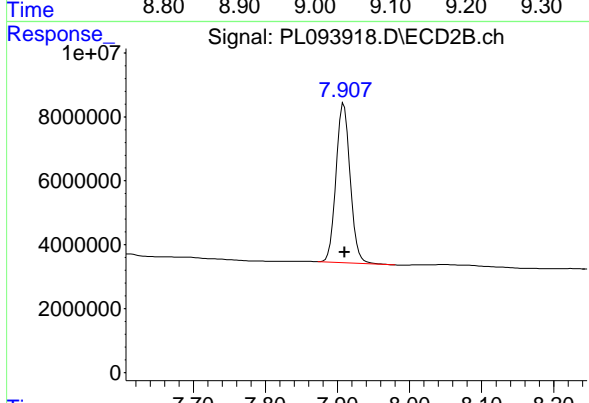
#21 Endrin ketone

R.T.: 6.837 min
 Delta R.T.: -0.002 min
 Response: 22573808
 Conc: 5.38 ng/ml



#28 Decachlorobiphenyl

R.T.: 9.054 min
 Delta R.T.: 0.000 min
 Response: 43574826
 Conc: 20.83 ng/ml



#28 Decachlorobiphenyl

R.T.: 7.909 min
 Delta R.T.: -0.001 min
 Response: 67555675
 Conc: 19.28 ng/ml