

Data Path : Z:\pestpcbsrv\HPCHEM1\ECD\_L\Data\PL020325\  
 Data File : PL094000.D  
 Signal(s) : Signal #1: ECD1A.ch Signal #2: ECD2B.ch  
 Acq On : 03 Feb 2025 17:08  
 Operator : AR\AJ  
 Sample : PEM  
 Misc :  
 ALS Vial : 3 Sample Multiplier: 1

**Instrument :**  
 ECD\_L  
**ClientSampleId :**  
 PEM

**Manual Integrations**  
**APPROVED**

Reviewed By :Abdul Mirza 02/04/2025  
 Supervised By :Ankita Jodhani 02/04/2025

Integration File signal 1: autoint1.e  
 Integration File signal 2: autoint2.e  
 Quant Time: Feb 04 00:45:43 2025  
 Quant Method : Z:\pestpcbsrv\HPCHEM1\ECD\_L\methods\PL012125.M  
 Quant Title : GC Extractables  
 QLast Update : Tue Jan 21 14:58:05 2025  
 Response via : Initial Calibration  
 Integrator: ChemStation

Volume Inj. : 1 µl  
 Signal #1 Phase : ZB-MR1 Signal #2 Phase: ZB-MR2  
 Signal #1 Info : 30M x 0.32mm x0.5 Signal #2 Info : 30M x 0.32mm x0.25µm

Compound	RT#1	RT#2	Resp#1	Resp#2	ng/ml	ng/ml
-----						
System Monitoring Compounds						
1) SA Tetrachlo...	3.538	2.774	56824914	64914065	21.103	19.887
28) SA Decachlor...	9.053	7.909	41311740	68838920	19.748	19.645
Target Compounds						
2) A alpha-BHC	3.993	3.276	42936616	47329166	11.199	9.681
3) MA gamma-BHC...	4.326	3.606	39953405	43250367	10.849	9.122
6) B beta-BHC	4.525	3.906	18394760	21386378	11.444	10.707
12) B 4,4'-DDE	6.189	5.228	327929	962285	0.135m	0.240m#
14) MA Endrin	6.571	5.636	103.7E6	180.9E6	44.208m	48.990
16) A 4,4'-DDD	6.708	5.784	4256278	7930620	2.239m	2.512
17) MA 4,4'-DDT	7.022	6.034	192.1E6	371.3E6	97.414m	114.117
18) B Endrin al...	6.920	6.109	2888459	6385830	1.486m	2.097 #
20) A Methoxychlor	7.499	6.609	246.2E6	459.0E6	235.974	256.681
21) B Endrin ke...	7.640	6.837	7083825	10276541	2.808m	2.450
-----						

(f)=RT Delta > 1/2 Window (#)=Amounts differ by > 25% (m)=manual int.

Data Path : Z:\pestpcbsrv\HPCHEM1\ECD\_L\Data\PL020325\  
 Data File : PL094000.D  
 Signal(s) : Signal #1: ECD1A.ch Signal #2: ECD2B.ch  
 Acq On : 03 Feb 2025 17:08  
 Operator : AR\AJ  
 Sample : PEM  
 Misc :  
 ALS Vial : 3 Sample Multiplier: 1

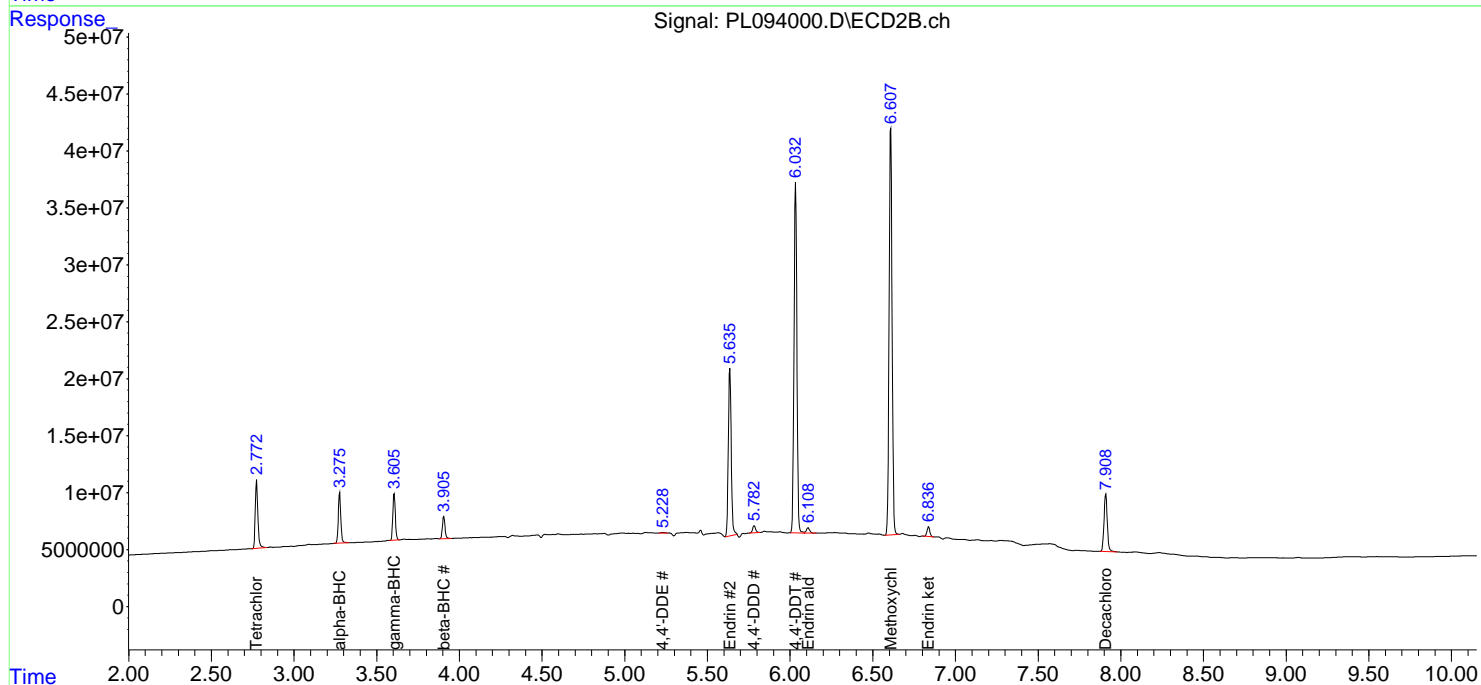
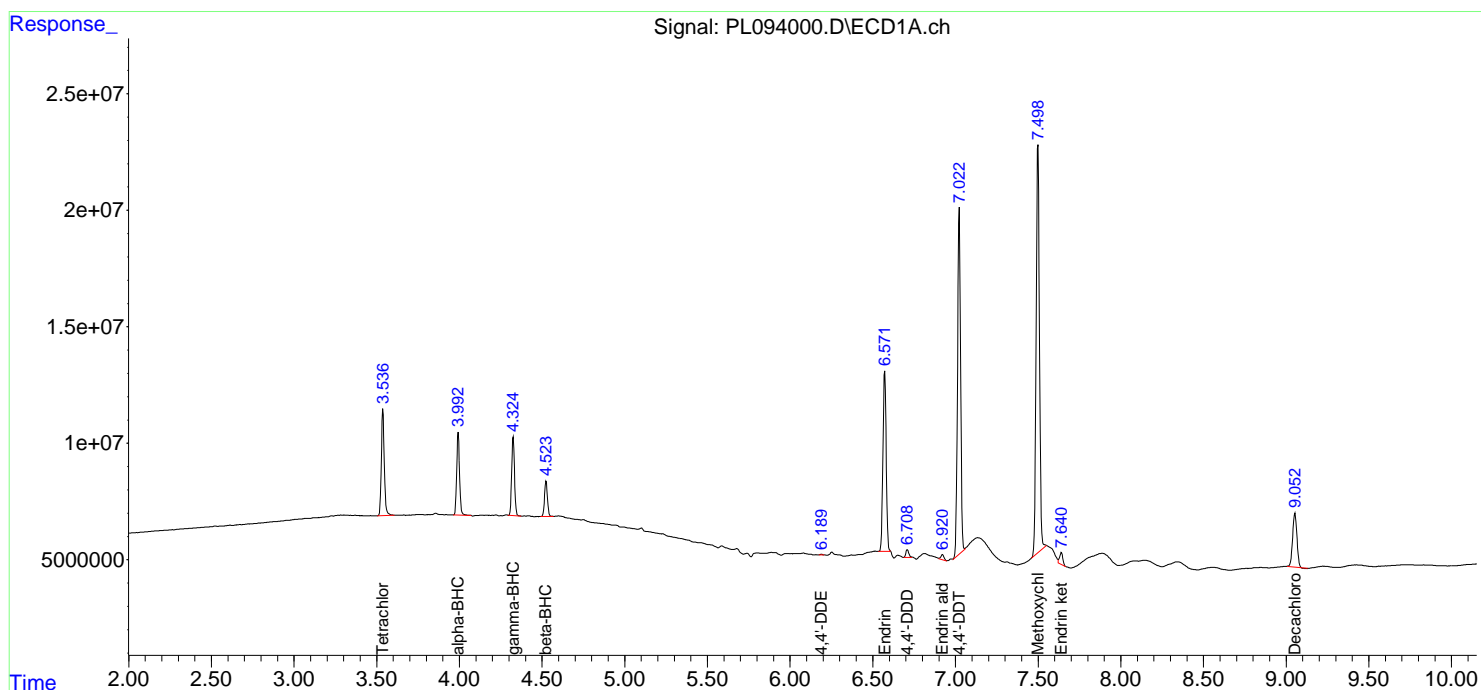
**Instrument :**  
 ECD\_L  
**ClientSampleId :**  
 PEM

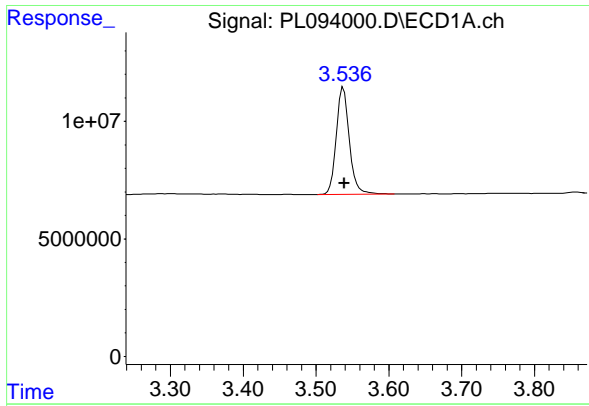
**Manual Integrations**  
**APPROVED**

Reviewed By :Abdul Mirza 02/04/2025  
 Supervised By :Ankita Jodhani 02/04/2025

Integration File signal 1: autoint1.e  
 Integration File signal 2: autoint2.e  
 Quant Time: Feb 04 00:45:43 2025  
 Quant Method : Z:\pestpcbsrv\HPCHEM1\ECD\_L\methods\PL012125.M  
 Quant Title : GC Extractables  
 QLast Update : Tue Jan 21 14:58:05 2025  
 Response via : Initial Calibration  
 Integrator: ChemStation

Volume Inj. : 1 µl  
 Signal #1 Phase : ZB-MR1 Signal #2 Phase: ZB-MR2  
 Signal #1 Info : 30M x 0.32mm x0.5 Signal #2 Info : 30M x 0.32mm x0.25µm





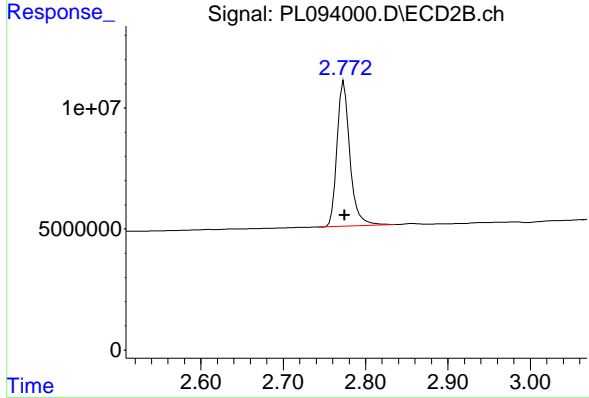
#1 Tetrachloro-m-xylene

R.T.: 3.538 min  
 Delta R.T.: -0.001 min  
 Response: 56824914  
 Conc: 21.10 ng/ml

Instrument :  
 ECD\_L  
 ClientSampleId :  
 PEM

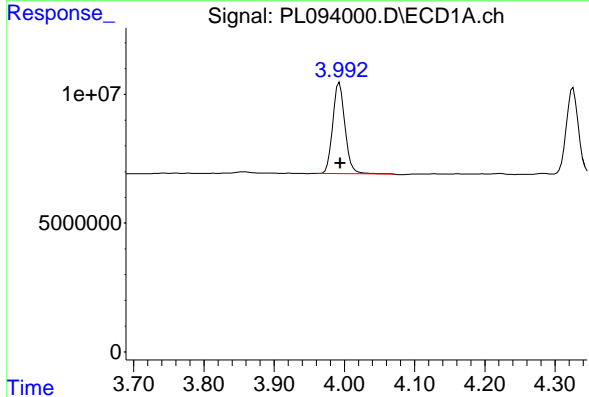
Manual Integrations  
 APPROVED

Reviewed By :Abdul Mirza 02/04/2025  
 Supervised By :Ankita Jodhani 02/04/2025



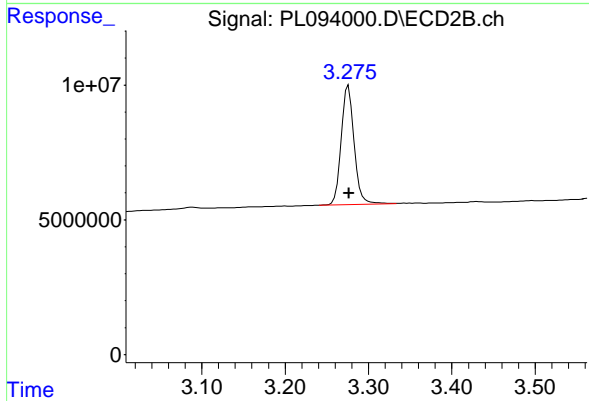
#1 Tetrachloro-m-xylene

R.T.: 2.774 min  
 Delta R.T.: 0.000 min  
 Response: 64914065  
 Conc: 19.89 ng/ml



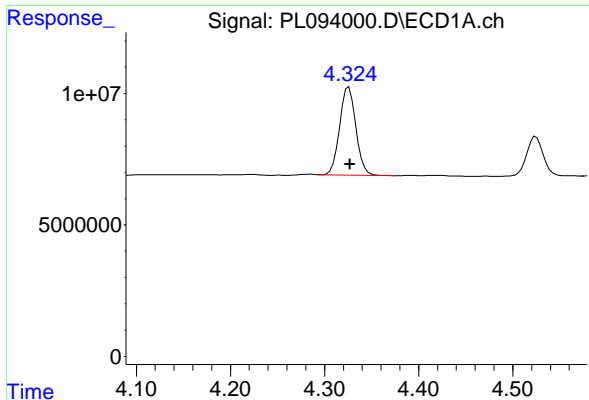
#2 alpha-BHC

R.T.: 3.993 min  
 Delta R.T.: -0.002 min  
 Response: 42936616  
 Conc: 11.20 ng/ml



#2 alpha-BHC

R.T.: 3.276 min  
 Delta R.T.: 0.000 min  
 Response: 47329166  
 Conc: 9.68 ng/ml



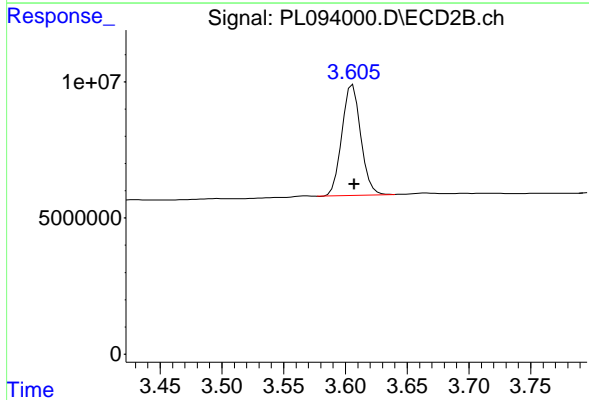
#3 gamma-BHC (Lindane)

R.T.: 4.326 min  
 Delta R.T.: -0.001 min  
 Response: 39953405  
 Conc: 10.85 ng/ml

Instrument :  
 ECD\_L  
 ClientSampleId :  
 PEM

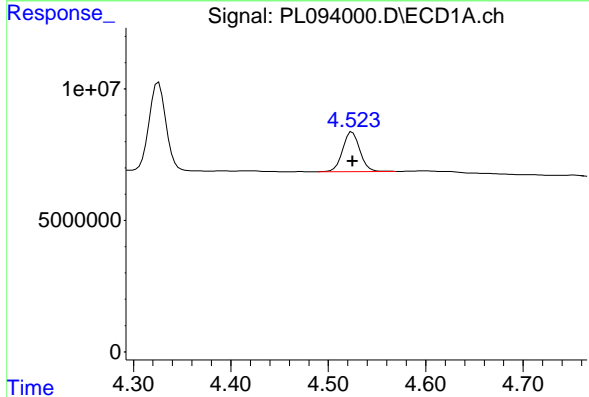
Manual Integrations  
 APPROVED

Reviewed By :Abdul Mirza 02/04/2025  
 Supervised By :Ankita Jodhani 02/04/2025



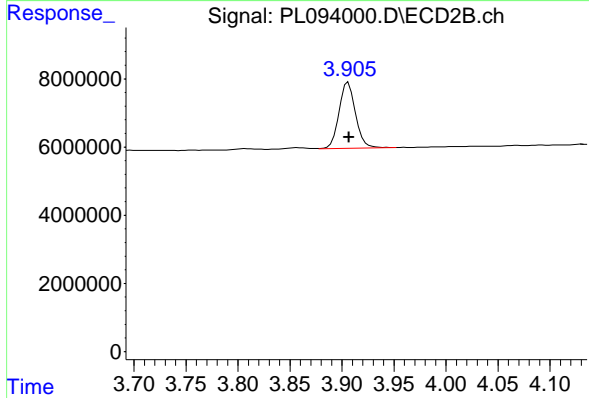
#3 gamma-BHC (Lindane)

R.T.: 3.606 min  
 Delta R.T.: -0.001 min  
 Response: 43250367  
 Conc: 9.12 ng/ml



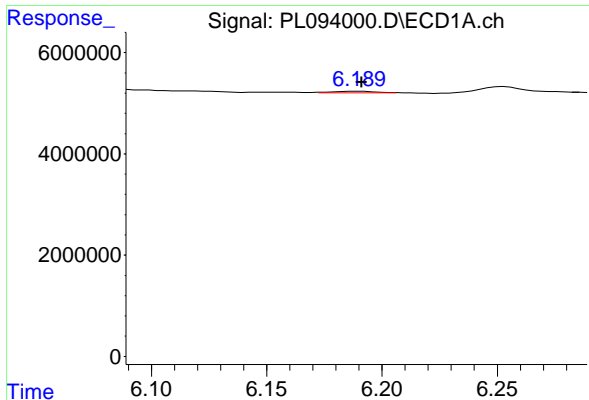
#6 beta-BHC

R.T.: 4.525 min  
 Delta R.T.: 0.000 min  
 Response: 18394760  
 Conc: 11.44 ng/ml



#6 beta-BHC

R.T.: 3.906 min  
 Delta R.T.: 0.000 min  
 Response: 21386378  
 Conc: 10.71 ng/ml



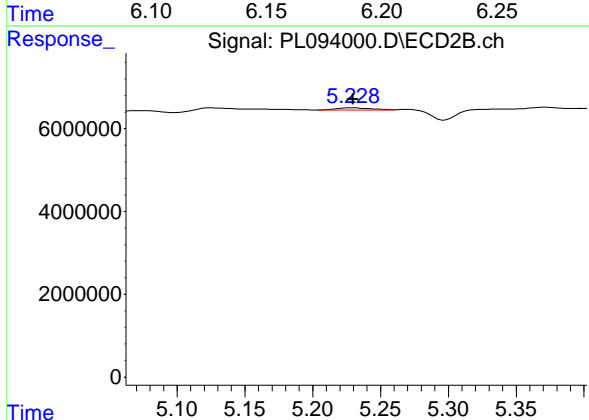
#12 4,4' -DDE

R.T.: 6.189 min  
 Delta R.T.: -0.002 min  
 Response: 327929  
 Conc: 0.13 ng/ml

Instrument : ECD\_L  
 ClientSampleId : PEM

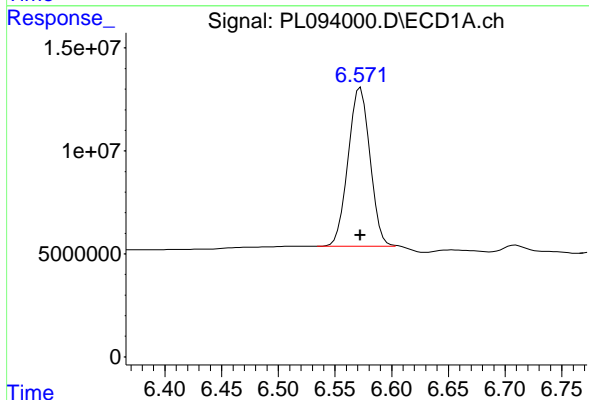
Manual Integrations  
 APPROVED

Reviewed By :Abdul Mirza 02/04/2025  
 Supervised By :Ankita Jodhani 02/04/2025



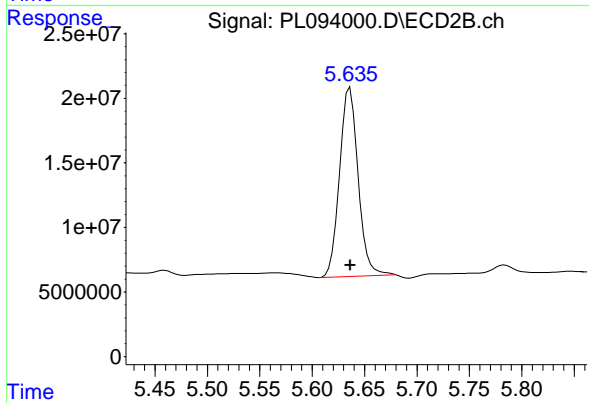
#12 4,4' -DDE

R.T.: 5.228 min  
 Delta R.T.: -0.002 min  
 Response: 962285  
 Conc: 0.24 ng/ml



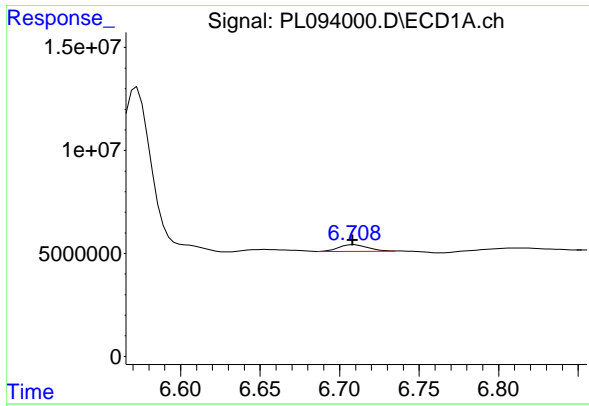
#14 Endrin

R.T.: 6.571 min  
 Delta R.T.: -0.001 min  
 Response: 103659263  
 Conc: 44.21 ng/ml



#14 Endrin

R.T.: 5.636 min  
 Delta R.T.: 0.000 min  
 Response: 180905544  
 Conc: 48.99 ng/ml



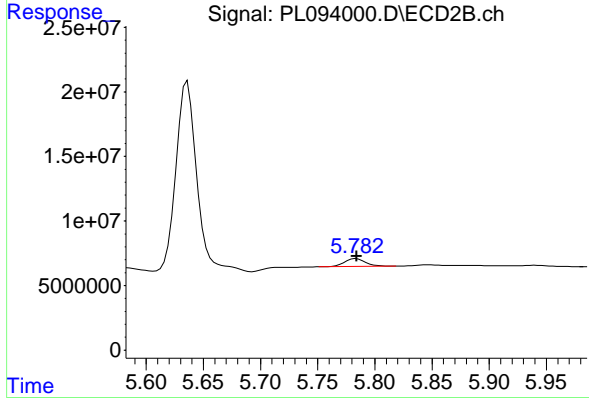
#16 4,4' -DDD

R.T.: 6.708 min  
 Delta R.T.: 0.000 min  
 Response: 4256278  
 Conc: 2.24 ng/ml

Instrument :  
 ECD\_L  
 ClientSampleId :  
 PEM

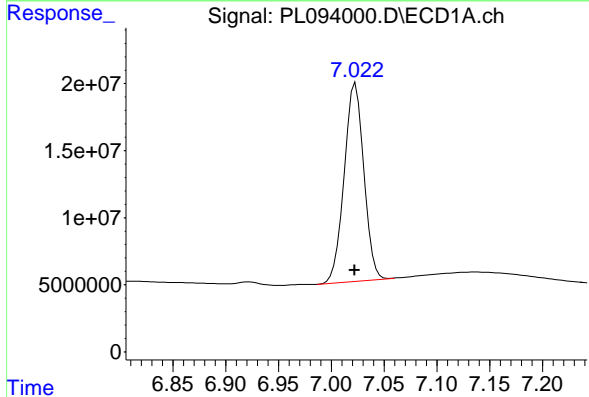
Manual Integrations  
 APPROVED

Reviewed By :Abdul Mirza 02/04/2025  
 Supervised By :Ankita Jodhani 02/04/2025



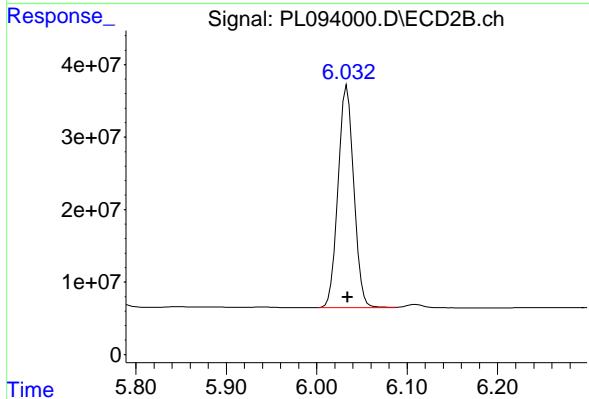
#16 4,4' -DDD

R.T.: 5.784 min  
 Delta R.T.: 0.000 min  
 Response: 7930620  
 Conc: 2.51 ng/ml



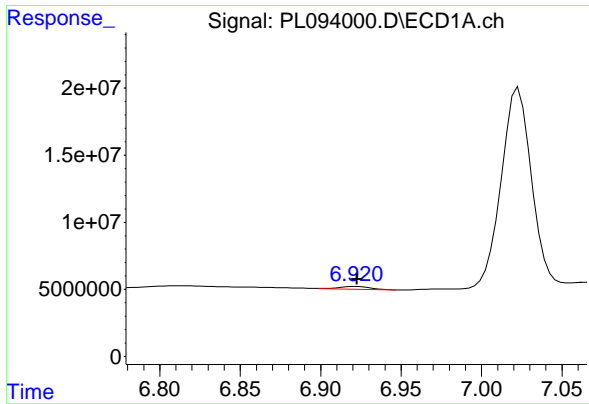
#17 4,4' -DDT

R.T.: 7.022 min  
 Delta R.T.: 0.000 min  
 Response: 192105181  
 Conc: 97.41 ng/ml m



#17 4,4' -DDT

R.T.: 6.034 min  
 Delta R.T.: 0.000 min  
 Response: 371341475  
 Conc: 114.12 ng/ml



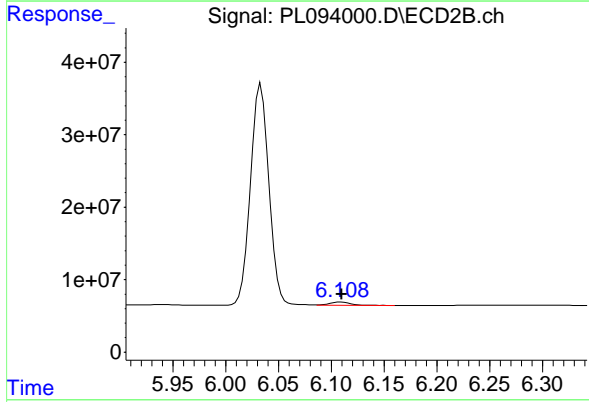
#18 Endrin aldehyde

R.T.: 6.920 min  
 Delta R.T.: -0.002 min  
 Response: 2888459  
 Conc: 1.49 ng/ml

Instrument :  
 ECD\_L  
 ClientSampleId :  
 PEM

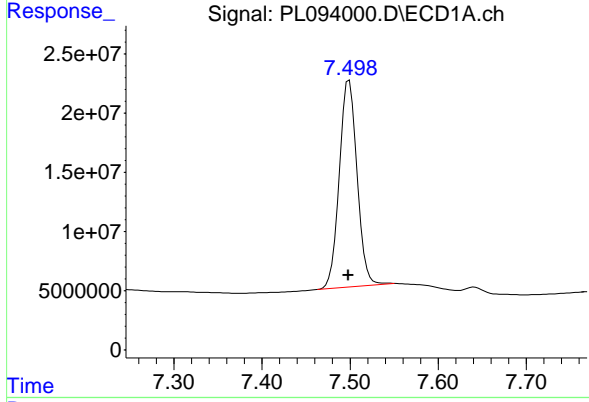
Manual Integrations  
 APPROVED

Reviewed By :Abdul Mirza 02/04/2025  
 Supervised By :Ankita Jodhani 02/04/2025



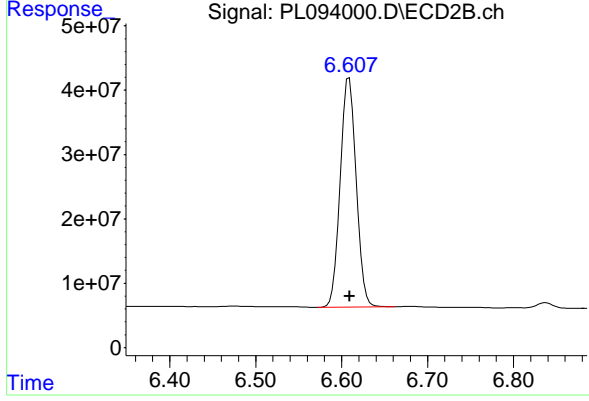
#18 Endrin aldehyde

R.T.: 6.109 min  
 Delta R.T.: 0.000 min  
 Response: 6385830  
 Conc: 2.10 ng/ml



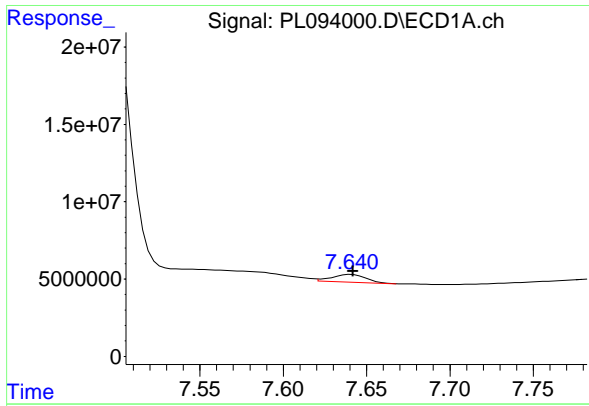
#20 Methoxychlor

R.T.: 7.499 min  
 Delta R.T.: 0.001 min  
 Response: 246214004  
 Conc: 235.97 ng/ml



#20 Methoxychlor

R.T.: 6.609 min  
 Delta R.T.: 0.000 min  
 Response: 458981331  
 Conc: 256.68 ng/ml



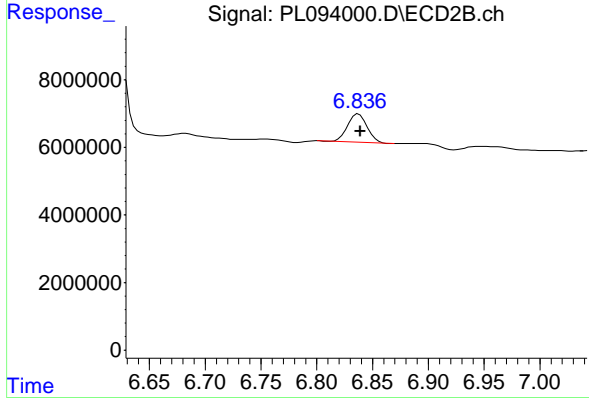
#21 Endrin ketone

R.T.: 7.640 min  
 Delta R.T.: -0.002 min  
 Response: 7083825  
 Conc: 2.81 ng/ml

Instrument :  
 ECD\_L  
 ClientSampleId :  
 PEM

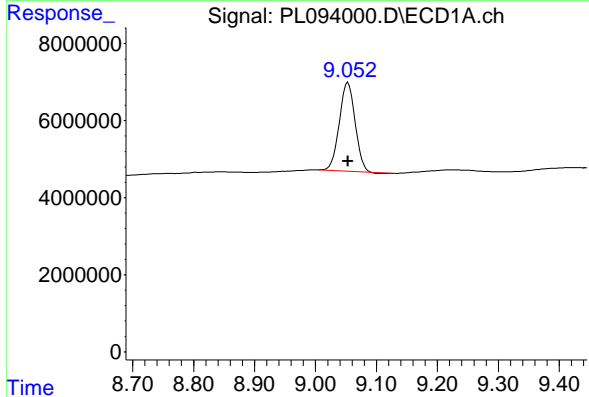
Manual Integrations  
 APPROVED

Reviewed By :Abdul Mirza 02/04/2025  
 Supervised By :Ankita Jodhani 02/04/2025



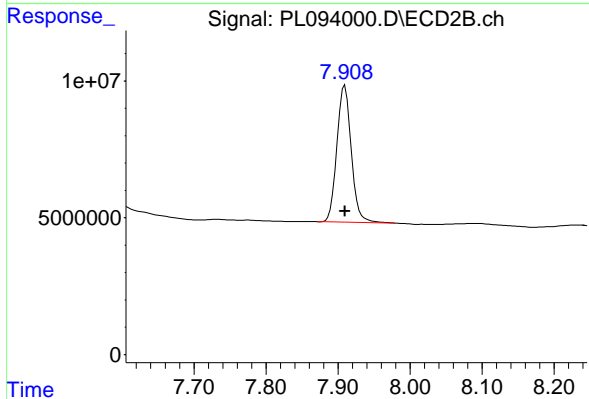
#21 Endrin ketone

R.T.: 6.837 min  
 Delta R.T.: -0.002 min  
 Response: 10276541  
 Conc: 2.45 ng/ml



#28 Decachlorobiphenyl

R.T.: 9.053 min  
 Delta R.T.: 0.000 min  
 Response: 41311740  
 Conc: 19.75 ng/ml



#28 Decachlorobiphenyl

R.T.: 7.909 min  
 Delta R.T.: 0.000 min  
 Response: 68838920  
 Conc: 19.65 ng/ml