

Data Path : Z:\pestpcbsrv\HPCHEM1\ECD_O\Data\P0013125\
 Data File : P0109352.D
 Signal(s) : Signal #1: ECD1A.ch Signal #2: ECD2B.ch
 Acq On : 01 Feb 2025 01:09
 Operator : YP/AJ
 Sample : Q1232-07
 Misc :
 ALS Vial : 27 Sample Multiplier: 1

Instrument :
 ECD_O
ClientSampleId :
 JPP-46.1-012925

Manual Integrations
APPROVED
 Reviewed By :Yogesh Patel 02/05/2025
 Supervised By :Ankita Jodhani 02/05/2025

Integration File signal 1: autoint1.e
 Integration File signal 2: autoint2.e
 Quant Time: Feb 01 05:21:56 2025
 Quant Method : Z:\pestpcbsrv\HPCHEM1\ECD_O\methods\P0012125.M
 Quant Title : GC EXTRACTABLES
 QLast Update : Wed Jan 22 03:46:11 2025
 Response via : Initial Calibration
 Integrator: ChemStation

Volume Inj. : 2 µl
 Signal #1 Phase : ZB-MR1 Signal #2 Phase: ZB-MR2
 Signal #1 Info : 30Mx0.32mmx 0.50µ Signal #2 Info : 30M x 0.32mm x 0.25µm

Compound	RT#1	RT#2	Resp#1	Resp#2	ng/ml	ng/ml

System Monitoring Compounds						
1) SA Tetrachlo...	3.700	3.696	182.2E6	123.2E6	24.106	22.983
2) SA Decachlor...	8.761	8.712	118.8E6	64153907	17.151	18.656
Target Compounds						
26) L6 AR-1254-1	5.608	5.587	37078825	29039572	89.664	103.313
27) L6 AR-1254-2	5.753	5.731	29419414	22464285	81.308	89.763
28) L6 AR-1254-3	6.160	6.133	64665845	38923822	114.631	99.088m
29) L6 AR-1254-4	6.388	6.360	15947397	9547580	46.275	43.329
30) L6 AR-1254-5	6.809	6.779	56616846	38639044	110.343	118.265

(f)=RT Delta > 1/2 Window (#)=Amounts differ by > 25% (m)=manual int.

Data Path : Z:\pestpcbsrv\HPCHEM1\ECD_O\Data\PO013125\
 Data File : PO109352.D
 Signal(s) : Signal #1: ECD1A.ch Signal #2: ECD2B.ch
 Acq On : 01 Feb 2025 01:09
 Operator : YP/AJ
 Sample : Q1232-07
 Misc :
 ALS Vial : 27 Sample Multiplier: 1

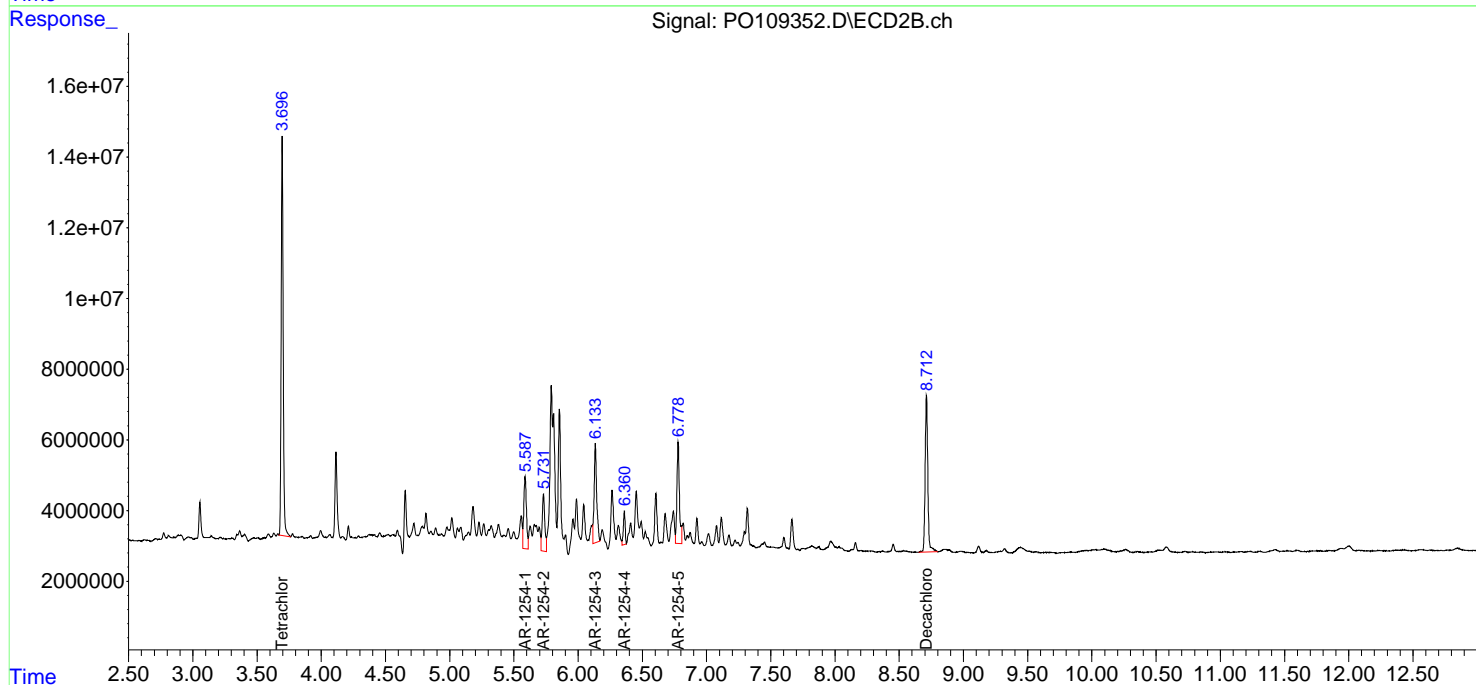
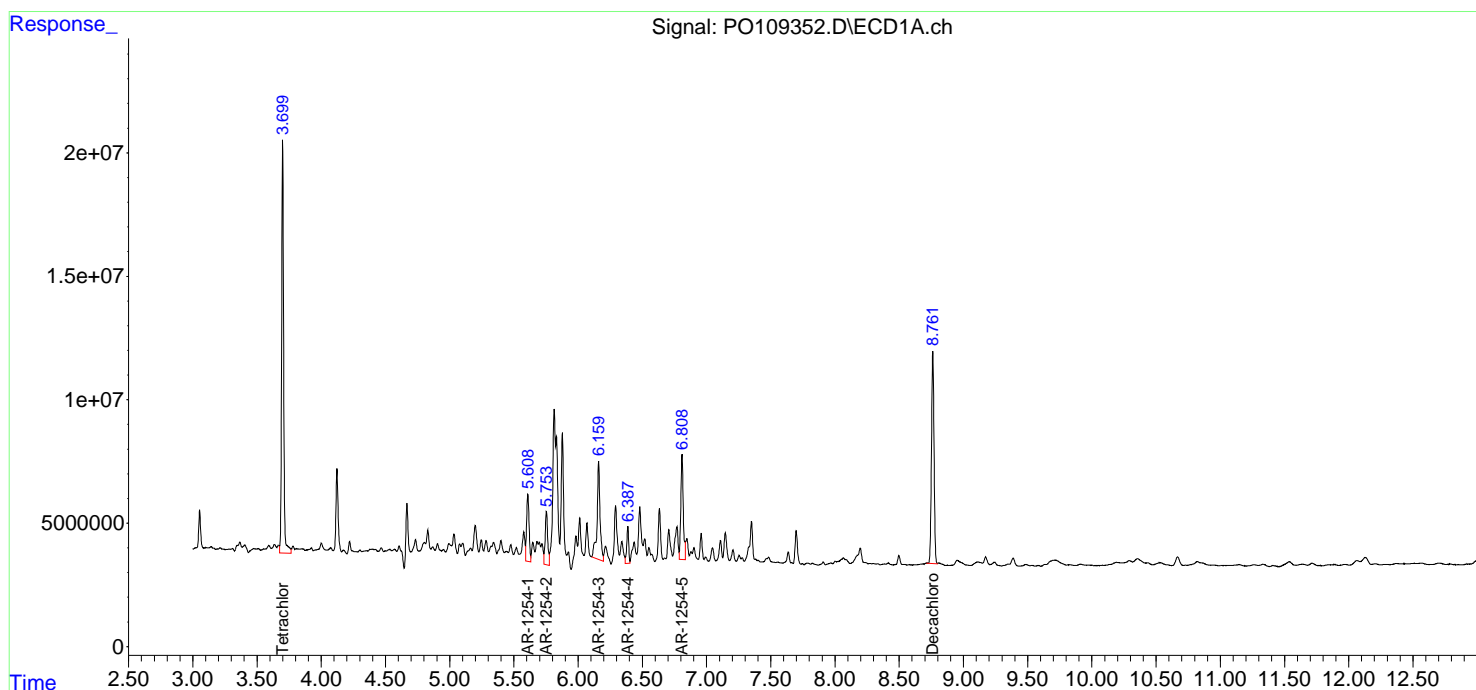
Instrument :
 ECD_O
 ClientSampleId :
 JPP-46.1-012925

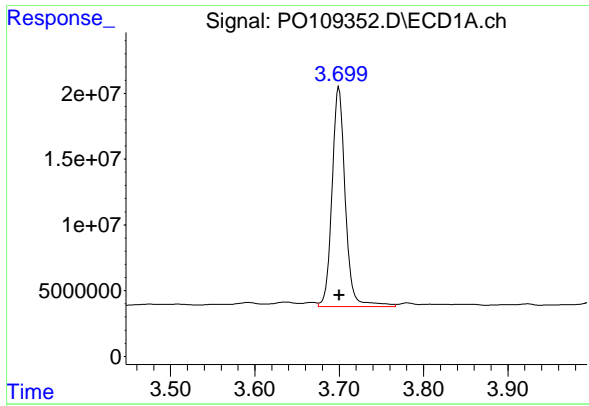
Manual Integrations
 APPROVED

Reviewed By :Yogesh Patel 02/05/2025
 Supervised By :Ankita Jodhani 02/05/2025

Integration File signal 1: autoint1.e
 Integration File signal 2: autoint2.e
 Quant Time: Feb 01 05:21:56 2025
 Quant Method : Z:\pestpcbsrv\HPCHEM1\ECD_O\methods\PO012125.M
 Quant Title : GC EXTRACTABLES
 QLast Update : Wed Jan 22 03:46:11 2025
 Response via : Initial Calibration
 Integrator: ChemStation

Volume Inj. : 2 µl
 Signal #1 Phase : ZB-MR1 Signal #2 Phase: ZB-MR2
 Signal #1 Info : 30Mx0.32mmx 0.50µm Signal #2 Info : 30M x 0.32mm x 0.25µm





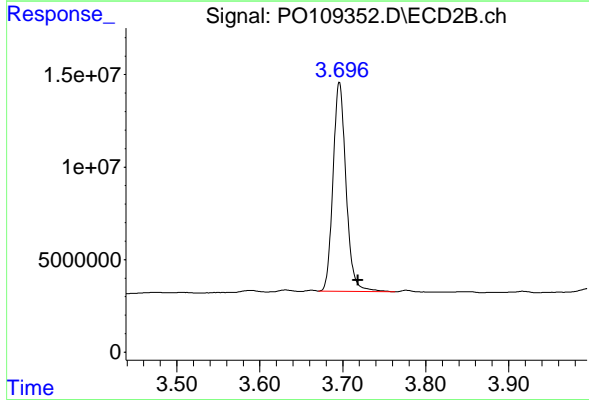
#1 Tetrachloro-m-xylene

R.T.: 3.700 min
 Delta R.T.: 0.000 min
 Response: 182156031
 Conc: 24.11 ng/ml

Instrument :
 ECD_O
 ClientSampleId :
 JPP-46.1-012925

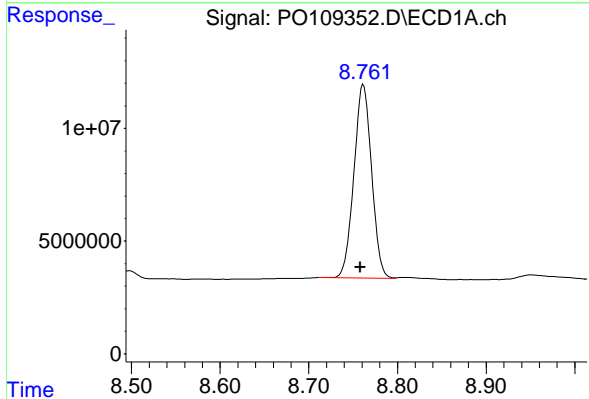
Manual Integrations
 APPROVED

Reviewed By :Yogesh Patel 02/05/2025
 Supervised By :Ankita Jodhani 02/05/2025



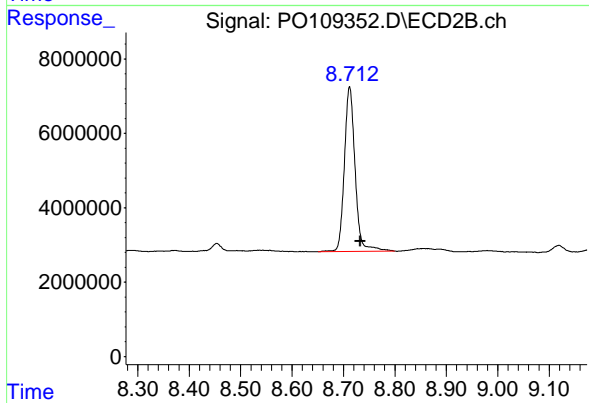
#1 Tetrachloro-m-xylene

R.T.: 3.696 min
 Delta R.T.: -0.022 min
 Response: 123194946
 Conc: 22.98 ng/ml



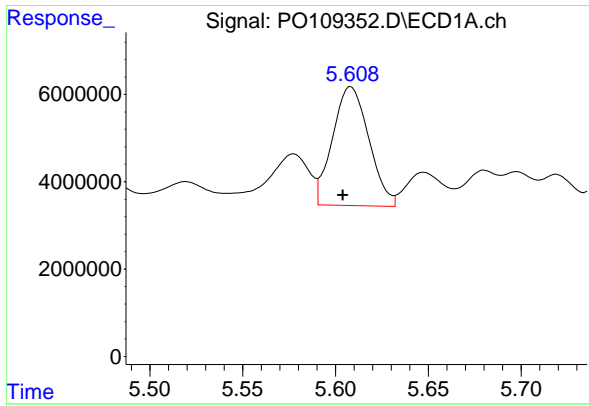
#2 Decachlorobiphenyl

R.T.: 8.761 min
 Delta R.T.: 0.003 min
 Response: 118818587
 Conc: 17.15 ng/ml



#2 Decachlorobiphenyl

R.T.: 8.712 min
 Delta R.T.: -0.021 min
 Response: 64153907
 Conc: 18.66 ng/ml



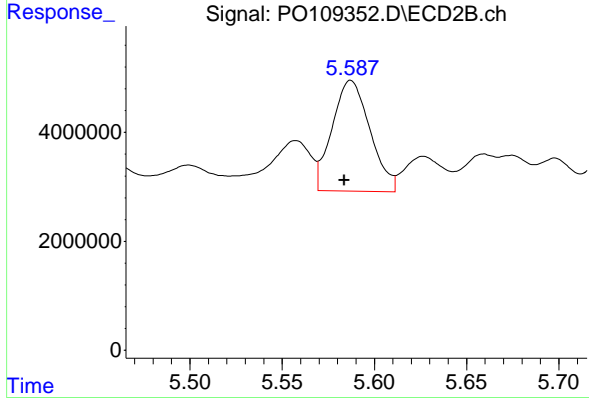
#26 AR-1254-1

R.T.: 5.608 min
 Delta R.T.: 0.004 min
 Response: 37078825
 Conc: 89.66 ng/ml

Instrument :
 ECD_O
 ClientSampleId :
 JPP-46.1-012925

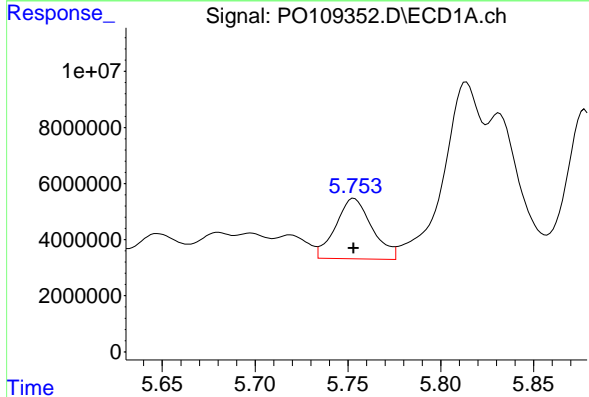
Manual Integrations
 APPROVED

Reviewed By :Yogesh Patel 02/05/2025
 Supervised By :Ankita Jodhani 02/05/2025



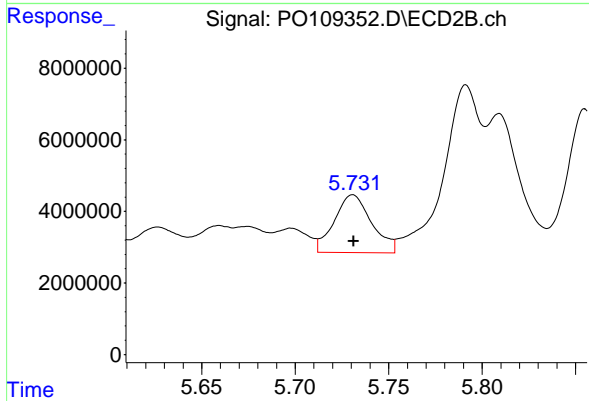
#26 AR-1254-1

R.T.: 5.587 min
 Delta R.T.: 0.003 min
 Response: 29039572
 Conc: 103.31 ng/ml



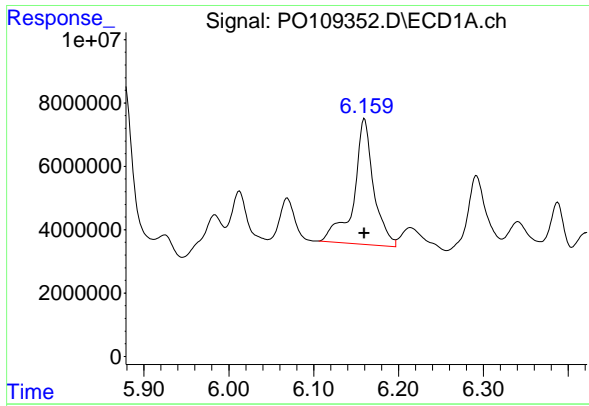
#27 AR-1254-2

R.T.: 5.753 min
 Delta R.T.: 0.000 min
 Response: 29419414
 Conc: 81.31 ng/ml



#27 AR-1254-2

R.T.: 5.731 min
 Delta R.T.: 0.000 min
 Response: 22464285
 Conc: 89.76 ng/ml



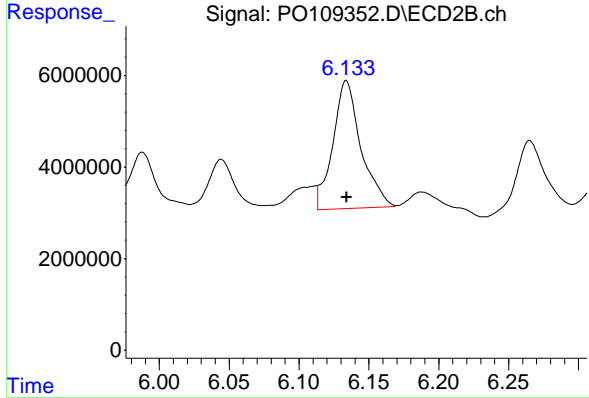
#28 AR-1254-3

R.T.: 6.160 min
 Delta R.T.: 0.000 min
 Response: 64665845
 Conc: 114.63 ng/ml

Instrument :
 ECD_O
 ClientSampleId :
 JPP-46.1-012925

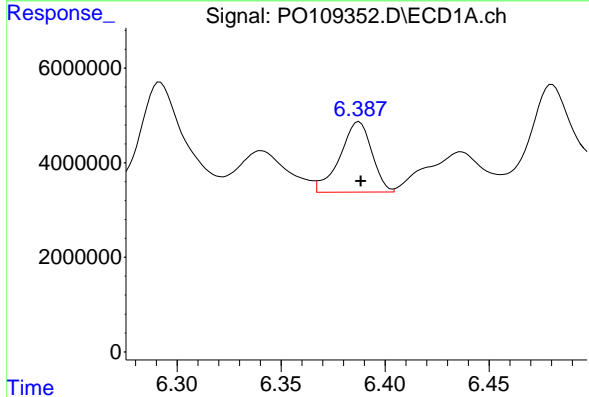
Manual Integrations
 APPROVED

Reviewed By :Yogesh Patel 02/05/2025
 Supervised By :Ankita Jodhani 02/05/2025



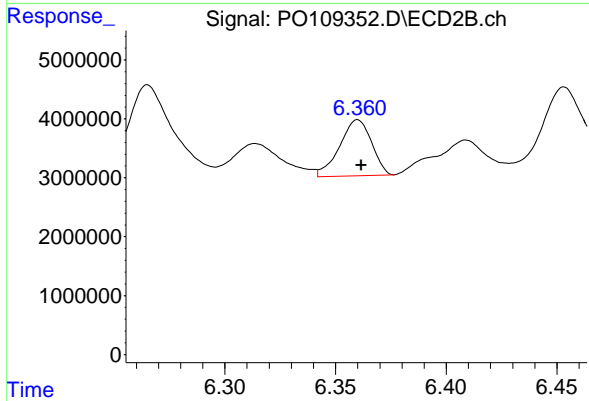
#28 AR-1254-3

R.T.: 6.133 min
 Delta R.T.: 0.000 min
 Response: 38923822
 Conc: 99.09 ng/ml m



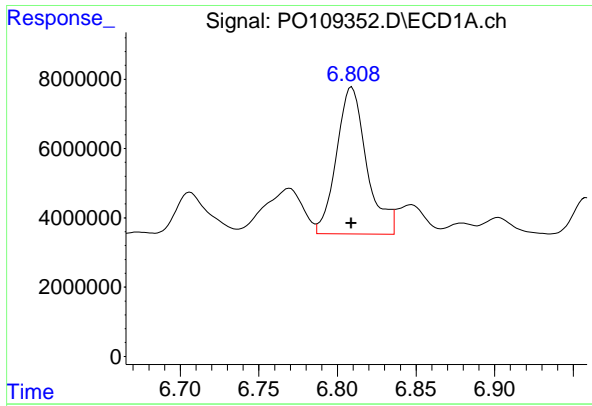
#29 AR-1254-4

R.T.: 6.388 min
 Delta R.T.: 0.000 min
 Response: 15947397
 Conc: 46.28 ng/ml



#29 AR-1254-4

R.T.: 6.360 min
 Delta R.T.: -0.002 min
 Response: 9547580
 Conc: 43.33 ng/ml



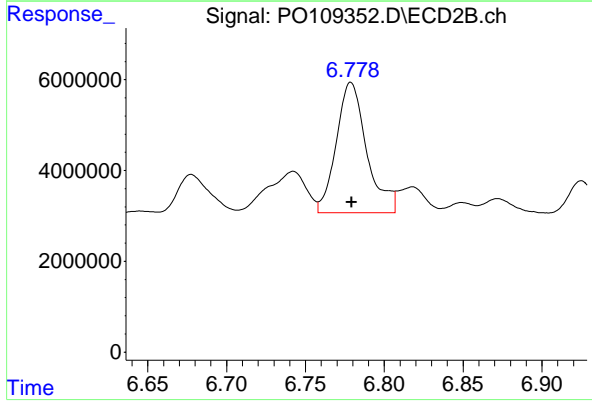
#30 AR-1254-5

R.T.: 6.809 min
 Delta R.T.: 0.000 min
 Response: 56616846
 Conc: 110.34 ng/ml

Instrument :
 ECD_O
 ClientSampleId :
 JPP-46.1-012925

Manual Integrations
 APPROVED

Reviewed By :Yogesh Patel 02/05/2025
 Supervised By :Ankita Jodhani 02/05/2025



#30 AR-1254-5

R.T.: 6.779 min
 Delta R.T.: 0.000 min
 Response: 38639044
 Conc: 118.27 ng/ml