

Data Path : Z:\pestpcbsrv\HPCHEM1\ECD\_0\Data\P0020325\  
 Data File : P0109374.D  
 Signal(s) : Signal #1: ECD1A.ch Signal #2: ECD2B.ch  
 Acq On : 03 Feb 2025 19:30  
 Operator : YP/AJ  
 Sample : AR1660IC050  
 Misc :  
 ALS Vial : 7 Sample Multiplier: 1

Instrument :  
 ECD\_0  
 ClientSampleId :  
 AR1660IC050

Integration File signal 1: autoint1.e  
 Integration File signal 2: autoint2.e  
 Quant Time: Feb 03 22:20:17 2025  
 Quant Method : Z:\pestpcbsrv\HPCHEM1\ECD\_0\methods\P0020325.M  
 Quant Title : GC EXTRACTABLES  
 QLast Update : Mon Feb 03 22:18:57 2025  
 Response via : Initial Calibration  
 Integrator: ChemStation

Volume Inj. : 2 µl  
 Signal #1 Phase : ZB-MR1 Signal #2 Phase: ZB-MR2  
 Signal #1 Info : 30Mx0.32mmx 0.50µ Signal #2 Info : 30M x 0.32mm x 0.25µm

Compound	RT#1	RT#2	Resp#1	Resp#2	ng/ml	ng/ml
-----						
System Monitoring Compounds						
1) SA Tetrachlo...	3.698	3.694	36706958	26719207	4.729	4.977
2) SA Decachlor...	8.758	8.708	35178264	17109279	5.509	5.552
Target Compounds						
3) L1 AR-1016-1	4.792	4.778	13868739	9424401	54.900	57.278
4) L1 AR-1016-2	4.812	4.798	18035509	12368643	52.863	53.592
5) L1 AR-1016-3	4.868	4.973	13122284	7014664	54.645	55.593
6) L1 AR-1016-4	4.989	5.015	10430537	6374630	54.912	59.501
7) L1 AR-1016-5	5.247	5.229	11668762	8225166	57.540	59.196
31) L7 AR-1260-1	6.288	6.262	25003373	16710518	68.264	68.940
32) L7 AR-1260-2	6.477	6.449	30395763	18519690	67.844	64.443
33) L7 AR-1260-3	6.846	6.602	21211144	16123864	56.804	58.370
34) L7 AR-1260-4	7.106	7.074	18843533	12282021	54.526	56.958
35) L7 AR-1260-5	7.348	7.314	43121792	26081465	53.259	53.675

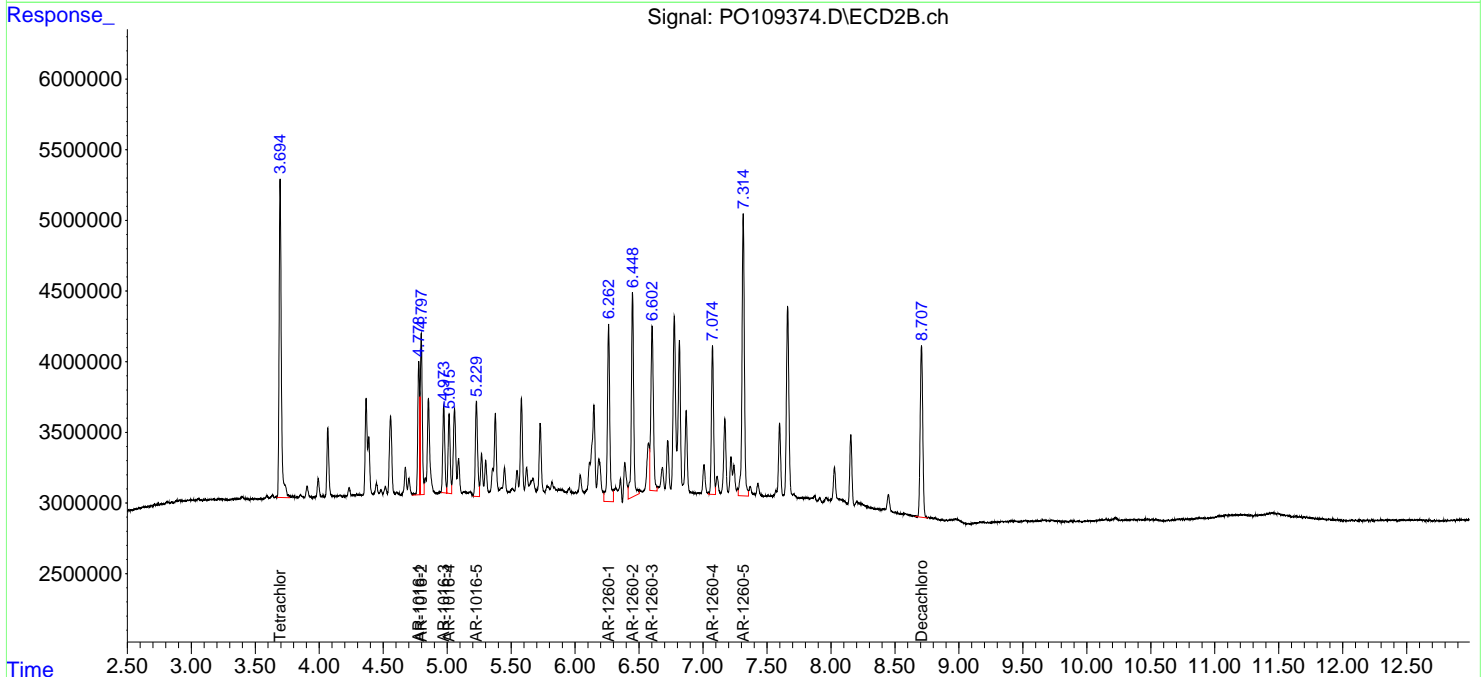
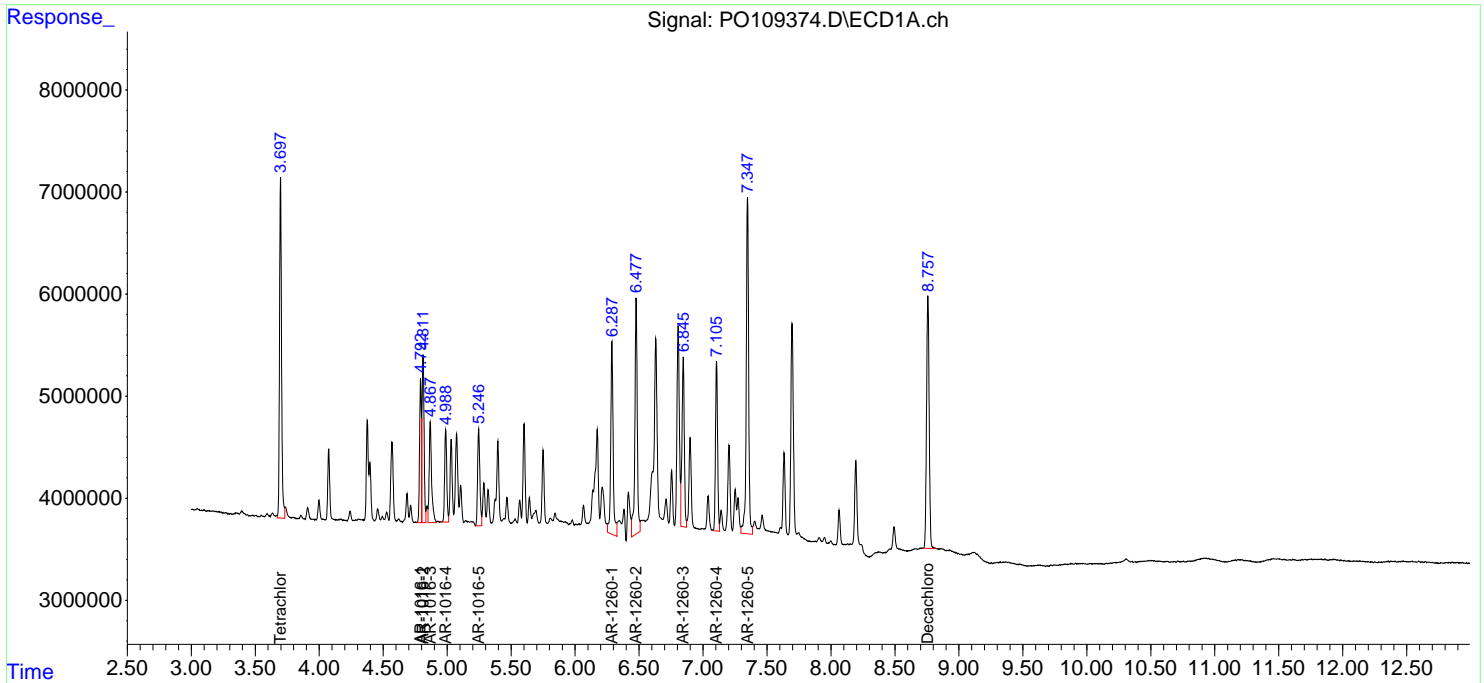
(f)=RT Delta > 1/2 Window (#)=Amounts differ by > 25% (m)=manual int.

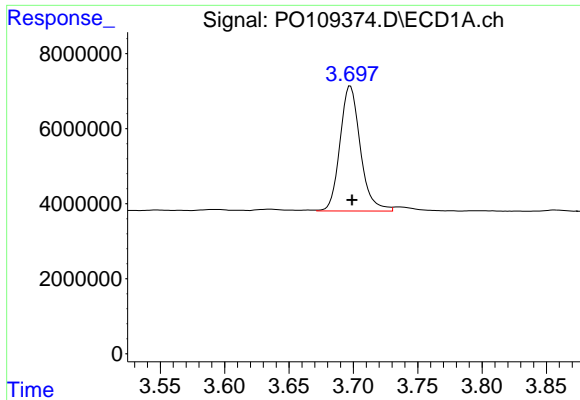
Data Path : Z:\pestpcbsrv\HPCHEM1\ECD\_O\Data\PO020325\  
 Data File : PO109374.D  
 Signal(s) : Signal #1: ECD1A.ch Signal #2: ECD2B.ch  
 Acq On : 03 Feb 2025 19:30  
 Operator : YP/AJ  
 Sample : AR1660ICC050  
 Misc :  
 ALS Vial : 7 Sample Multiplier: 1

Instrument :  
 ECD\_O  
 ClientSampleId :  
 AR1660ICC050

Integration File signal 1: autoint1.e  
 Integration File signal 2: autoint2.e  
 Quant Time: Feb 03 22:20:17 2025  
 Quant Method : Z:\pestpcbsrv\HPCHEM1\ECD\_O\methods\PO020325.M  
 Quant Title : GC EXTRACTABLES  
 QLast Update : Mon Feb 03 22:18:57 2025  
 Response via : Initial Calibration  
 Integrator: ChemStation

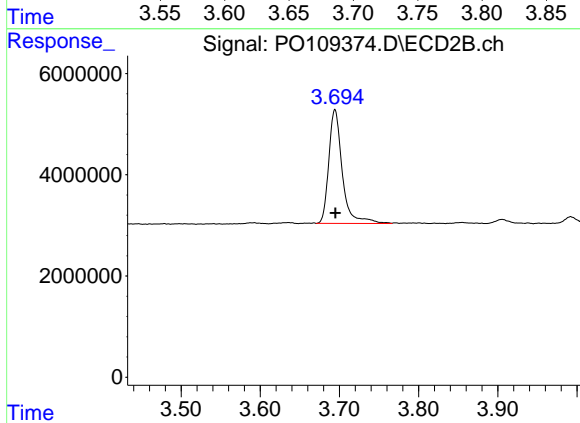
Volume Inj. : 2 µl  
 Signal #1 Phase : ZB-MR1 Signal #2 Phase: ZB-MR2  
 Signal #1 Info : 30Mx0.32mmx 0.50µ Signal #2 Info : 30M x 0.32mm x 0.25µm



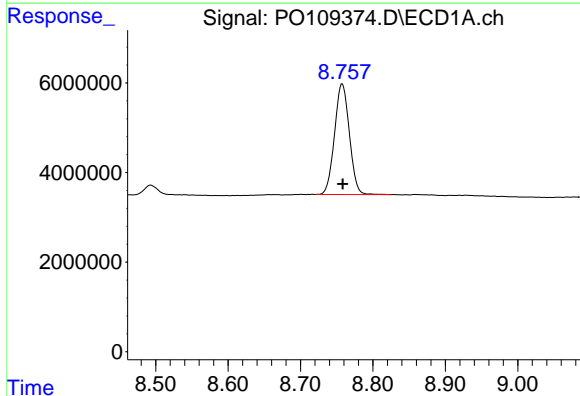


#1 Tetrachloro-m-xylene  
 R.T.: 3.698 min  
 Delta R.T.: -0.001 min  
 Response: 36706958  
 Conc: 4.73 ng/ml

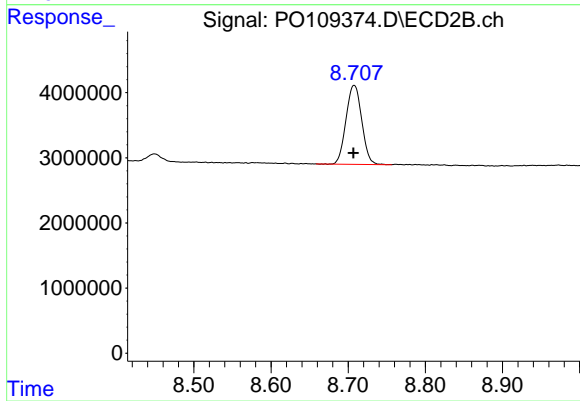
Instrument :  
 ECD\_O  
 ClientSampleId :  
 AR1660ICC050



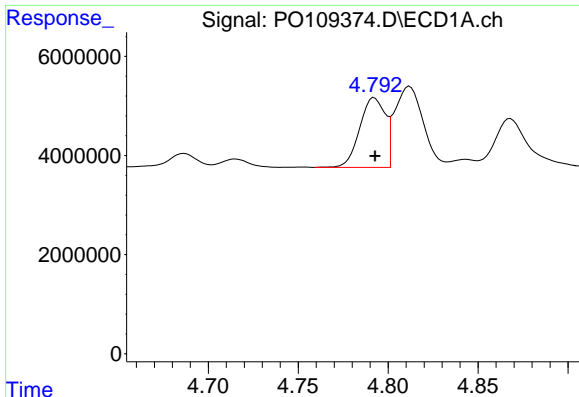
#1 Tetrachloro-m-xylene  
 R.T.: 3.694 min  
 Delta R.T.: 0.000 min  
 Response: 26719207  
 Conc: 4.98 ng/ml



#2 Decachlorobiphenyl  
 R.T.: 8.758 min  
 Delta R.T.: 0.000 min  
 Response: 35178264  
 Conc: 5.51 ng/ml



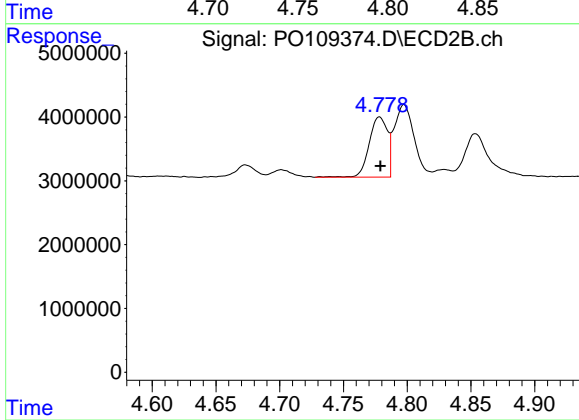
#2 Decachlorobiphenyl  
 R.T.: 8.708 min  
 Delta R.T.: 0.000 min  
 Response: 17109279  
 Conc: 5.55 ng/ml



#3 AR-1016-1

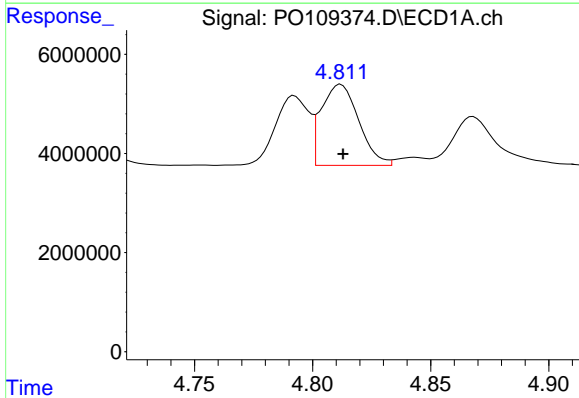
R.T.: 4.792 min  
 Delta R.T.: 0.000 min  
 Response: 13868739  
 Conc: 54.90 ng/ml

Instrument :  
 ECD\_O  
 ClientSampleId :  
 AR1660ICC050



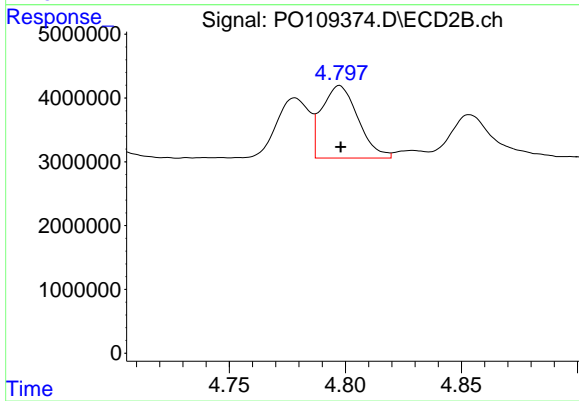
#3 AR-1016-1

R.T.: 4.778 min  
 Delta R.T.: 0.000 min  
 Response: 9424401  
 Conc: 57.28 ng/ml



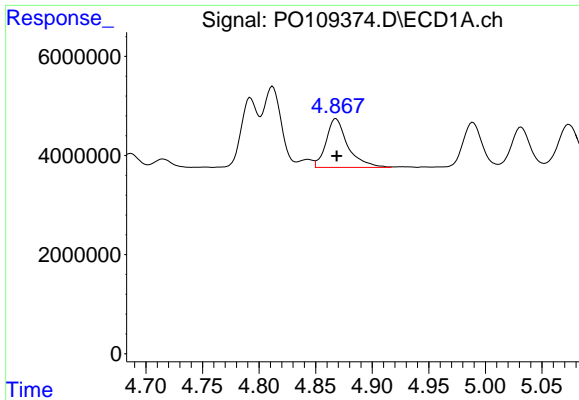
#4 AR-1016-2

R.T.: 4.812 min  
 Delta R.T.: 0.000 min  
 Response: 18035509  
 Conc: 52.86 ng/ml



#4 AR-1016-2

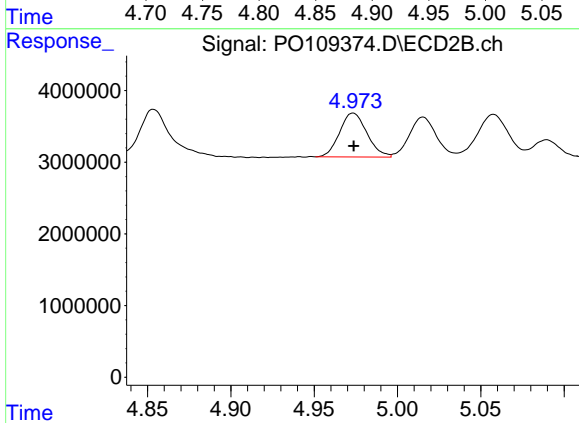
R.T.: 4.798 min  
 Delta R.T.: 0.000 min  
 Response: 12368643  
 Conc: 53.59 ng/ml



#5 AR-1016-3

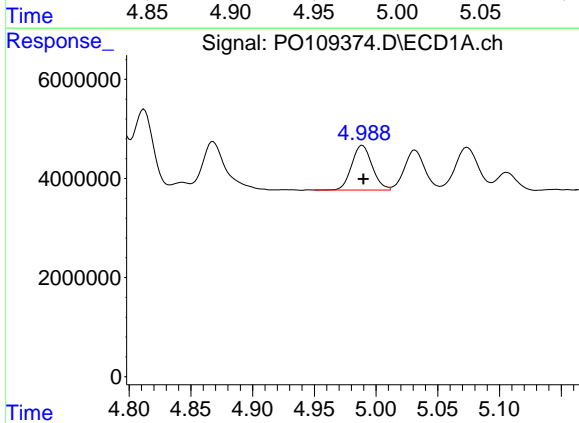
R.T.: 4.868 min  
 Delta R.T.: 0.000 min  
 Response: 13122284  
 Conc: 54.64 ng/ml

Instrument :  
 ECD\_O  
 ClientSampleId :  
 AR1660ICC050



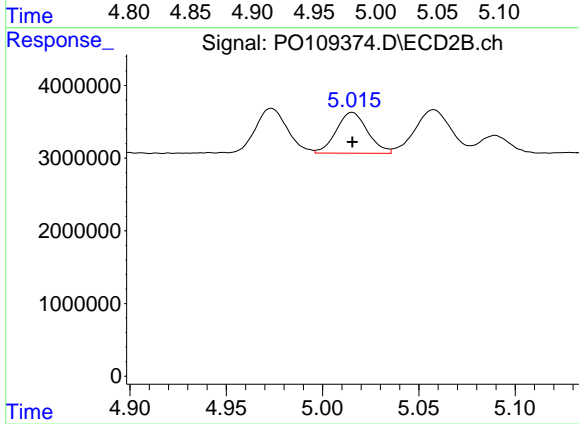
#5 AR-1016-3

R.T.: 4.973 min  
 Delta R.T.: 0.000 min  
 Response: 7014664  
 Conc: 55.59 ng/ml



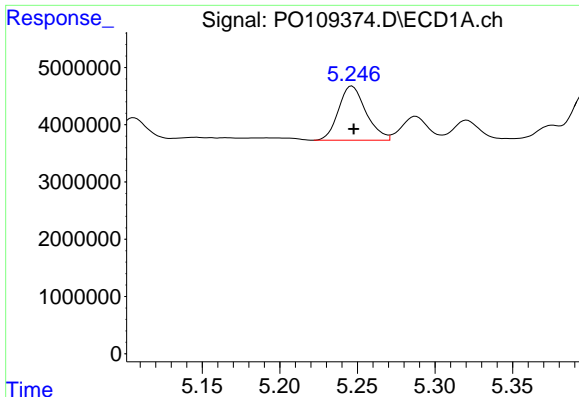
#6 AR-1016-4

R.T.: 4.989 min  
 Delta R.T.: 0.000 min  
 Response: 10430537  
 Conc: 54.91 ng/ml



#6 AR-1016-4

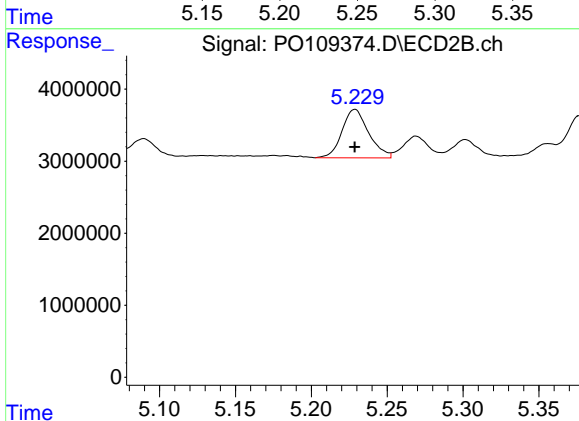
R.T.: 5.015 min  
 Delta R.T.: 0.000 min  
 Response: 6374630  
 Conc: 59.50 ng/ml



#7 AR-1016-5

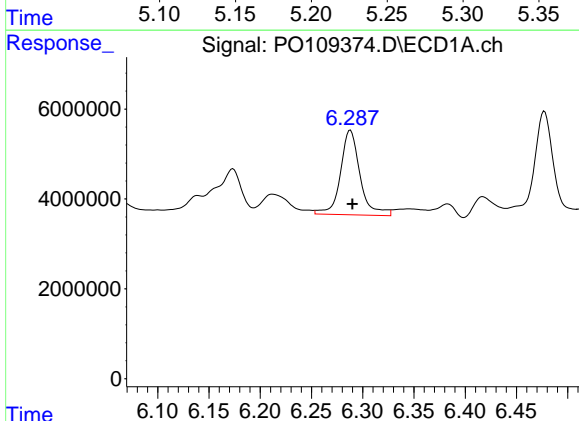
R.T.: 5.247 min  
 Delta R.T.: -0.001 min  
 Response: 11668762  
 Conc: 57.54 ng/ml

Instrument :  
 ECD\_O  
 ClientSampleId :  
 AR1660ICC050



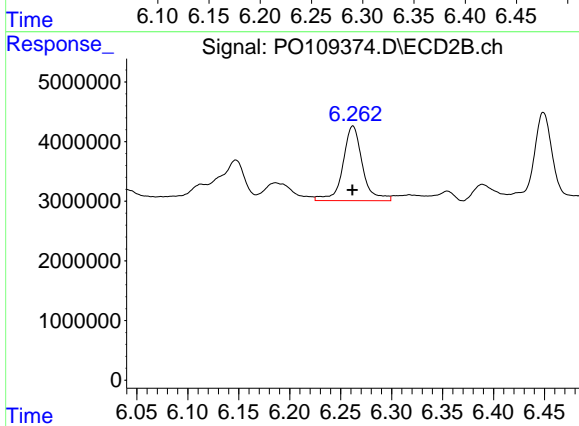
#7 AR-1016-5

R.T.: 5.229 min  
 Delta R.T.: 0.000 min  
 Response: 8225166  
 Conc: 59.20 ng/ml



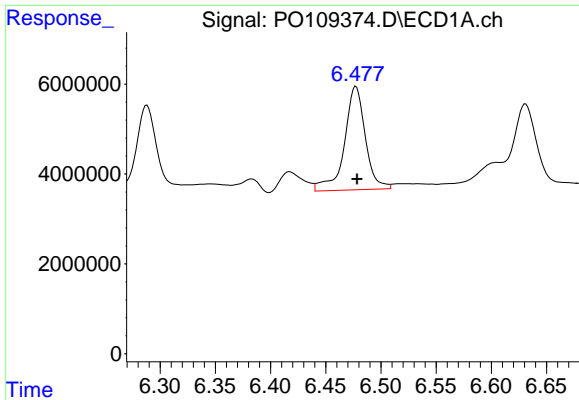
#31 AR-1260-1

R.T.: 6.288 min  
 Delta R.T.: -0.002 min  
 Response: 25003373  
 Conc: 68.26 ng/ml



#31 AR-1260-1

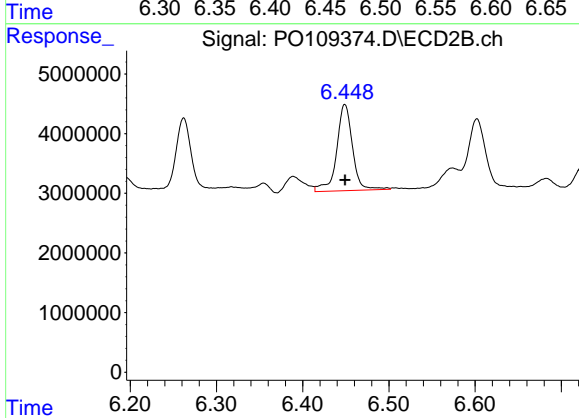
R.T.: 6.262 min  
 Delta R.T.: 0.000 min  
 Response: 16710518  
 Conc: 68.94 ng/ml



#32 AR-1260-2

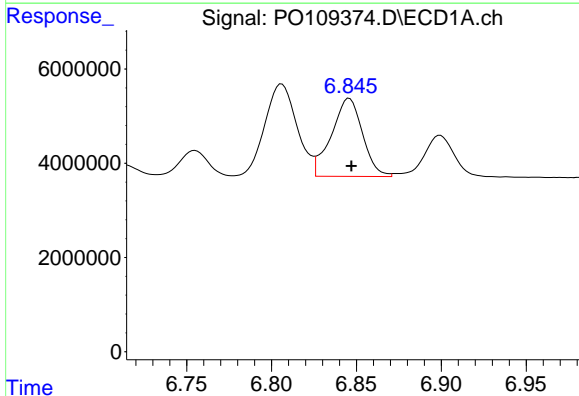
R.T.: 6.477 min  
 Delta R.T.: 0.000 min  
 Response: 30395763  
 Conc: 67.84 ng/ml

Instrument :  
 ECD\_O  
 ClientSampleId :  
 AR1660ICC050



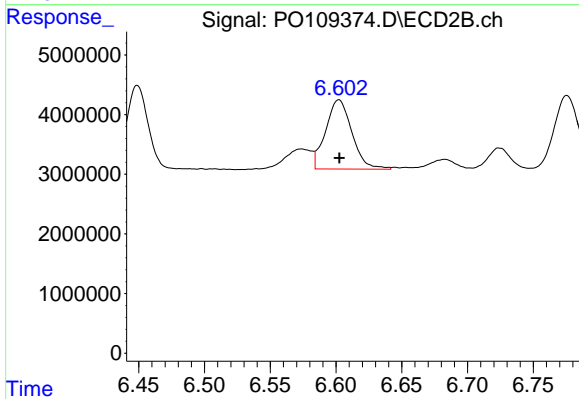
#32 AR-1260-2

R.T.: 6.449 min  
 Delta R.T.: 0.000 min  
 Response: 18519690  
 Conc: 64.44 ng/ml



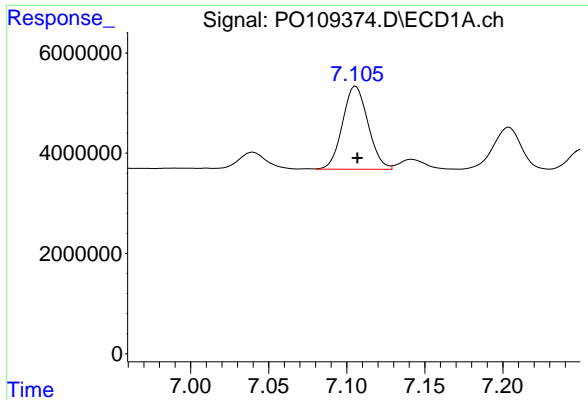
#33 AR-1260-3

R.T.: 6.846 min  
 Delta R.T.: -0.001 min  
 Response: 21211144  
 Conc: 56.80 ng/ml



#33 AR-1260-3

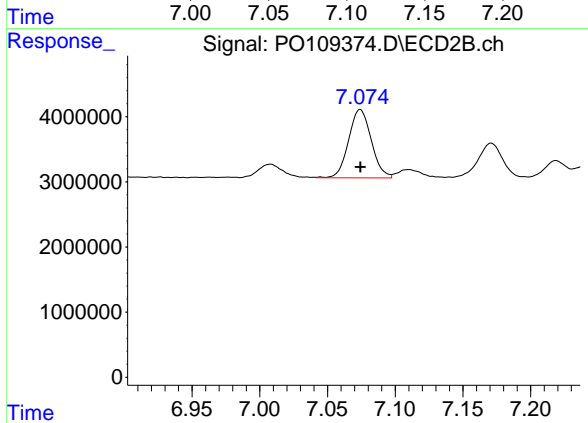
R.T.: 6.602 min  
 Delta R.T.: 0.000 min  
 Response: 16123864  
 Conc: 58.37 ng/ml



#34 AR-1260-4

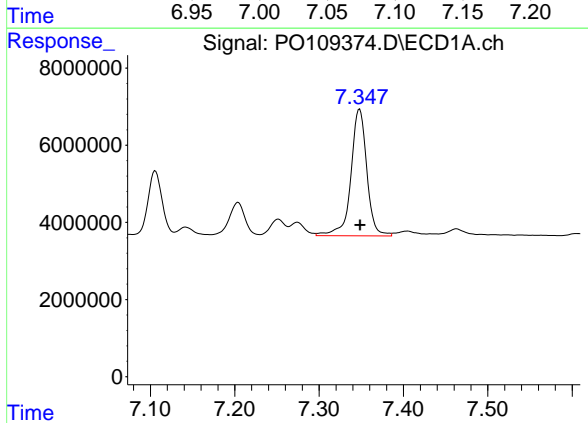
R.T.: 7.106 min  
 Delta R.T.: -0.001 min  
 Response: 18843533  
 Conc: 54.53 ng/ml

Instrument :  
 ECD\_O  
 ClientSampleId :  
 AR1660ICC050



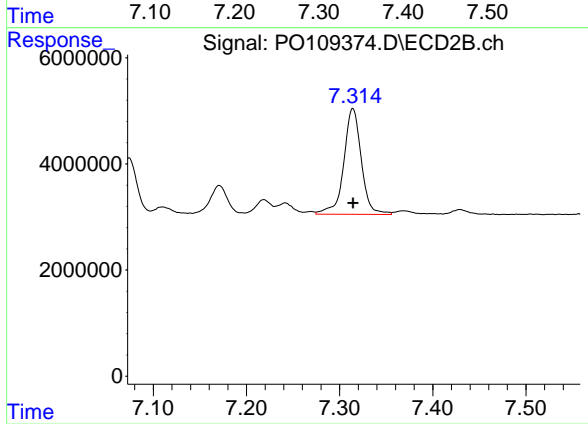
#34 AR-1260-4

R.T.: 7.074 min  
 Delta R.T.: 0.000 min  
 Response: 12282021  
 Conc: 56.96 ng/ml



#35 AR-1260-5

R.T.: 7.348 min  
 Delta R.T.: 0.000 min  
 Response: 43121792  
 Conc: 53.26 ng/ml



#35 AR-1260-5

R.T.: 7.314 min  
 Delta R.T.: 0.000 min  
 Response: 26081465  
 Conc: 53.68 ng/ml