

Data Path : Z:\pestpcbsrv\HPCHEM1\ECD_L\Data\PL013125\
 Data File : PL093948.D
 Signal(s) : Signal #1: ECD1A.ch Signal #2: ECD2B.ch
 Acq On : 31 Jan 2025 17:27
 Operator : AR\AJ
 Sample : Q1232-11
 Misc :
 ALS Vial : 18 Sample Multiplier: 1

Instrument :
 ECD_L
 ClientSampleId :
 JPP-42.1-012925

Integration File signal 1: autoint1.e
 Integration File signal 2: autoint2.e
 Quant Time: Feb 01 00:29:10 2025
 Quant Method : Z:\pestpcbsrv\HPCHEM1\ECD_L\methods\PL012125.M
 Quant Title : GC Extractables
 QLast Update : Tue Jan 21 14:58:05 2025
 Response via : Initial Calibration
 Integrator: ChemStation

Volume Inj. : 1 µl
 Signal #1 Phase : ZB-MR2 Signal #2 Phase: ZB-MR2
 Signal #1 Info : 30M x 0.32mm x0.5 Signal #2 Info : 30M x 0.32mm x0.25µm

Compound	RT#1	RT#2	Resp#1	Resp#2	ng/ml	ng/ml

System Monitoring Compounds						
1) SA Tetrachlo...	3.538	2.774	37447118	52134315	13.907	15.972
28) SA Decachlor...	9.055	7.911	32555044	53648194	15.562	15.310
Target Compounds						
2) A alpha-BHC	0.000	3.293f	0	903194	N.D.	0.185 #
4) MA Heptachlor	0.000	3.937	0	2150587	N.D.	0.462 #
5) MB Aldrin	0.000	4.226	0	7471223	N.D.	1.638 #
6) B beta-BHC	4.546f	3.914	-3246758	6131765	N.D.	3.070
7) B delta-BHC	4.768	4.129	3746427	4520092	1.069	0.951
8) B Heptachlo...	5.681	4.730	71040	15014945	0.024	3.592 #
9) A Endosulfan I	0.000	5.125f	0	6550024	N.D.	1.689 #
10) B gamma-Chl...	5.940	4.957f	15066064	39037737	5.405	9.212 #
11) B alpha-Chl...	6.021	5.040	15903883	32234118	5.704	7.699 #
12) B 4,4'-DDE	0.000	5.229	0	8094027	N.D.	2.019 #
13) MA Dieldrin	0.000	5.363	0	15791042	N.D.	3.676 #
14) MA Endrin	6.573	5.645	1002473	1518499	0.428	0.411
15) B Endosulfa...	6.782	5.933	4289082	3855521	1.780	1.041 #
16) A 4,4'-DDD	6.720	5.772	9596603	670635	5.049	0.212 #
17) MA 4,4'-DDT	7.024	6.031	2446837	9362534	1.241	2.877 #
18) B Endrin al...	0.000	6.130f	0	2386524	N.D.	0.784 #
19) B Endosulfa...	0.000	6.331	0	4632727	N.D.	1.299 #
20) A Methoxychlor	0.000	6.585f	0	3910662	N.D.	2.187 #
21) B Endrin ke...	7.618f	6.834	3969452	145097	1.574	0.035 #
24) Chlordane-2	0.000	4.381f	0	9794393	N.D.	66.755 #
25) Chlordane-3	5.940	4.957f	15066064	39037737	38.408	89.779 #
26) Chlordane-4	6.021	5.040	15903883	32234118	33.830	76.083 #
27) Chlordane-5	0.000	5.933	0	3855521	N.D.	25.173 #

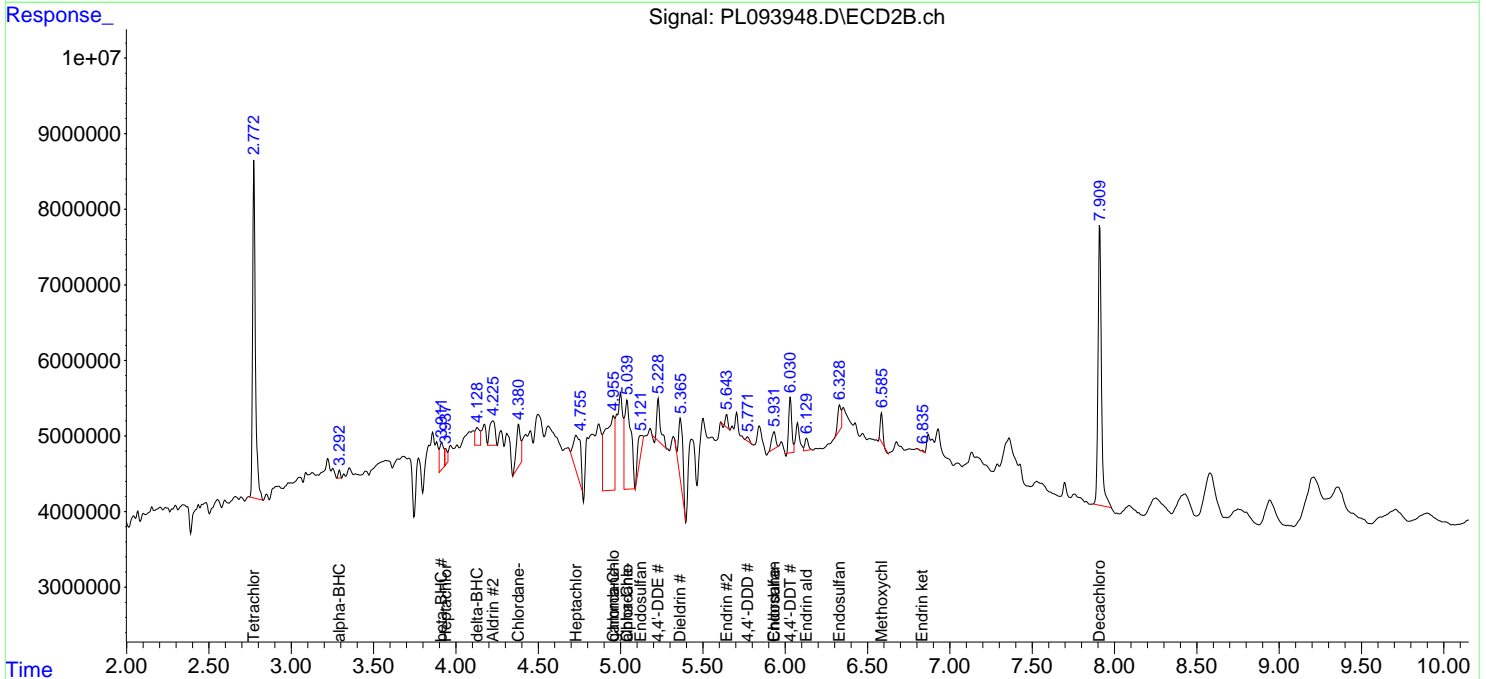
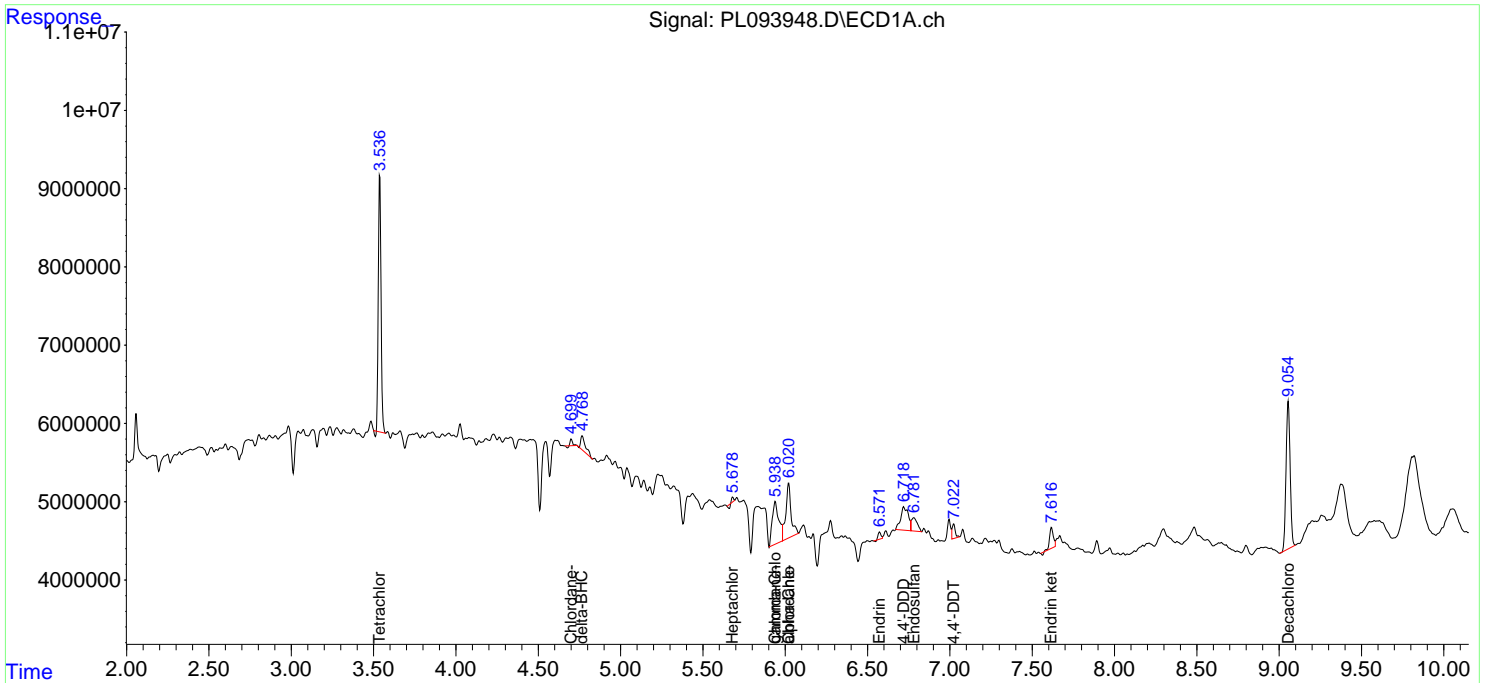
(f)=RT Delta > 1/2 Window (#)=Amounts differ by > 25% (m)=manual int.

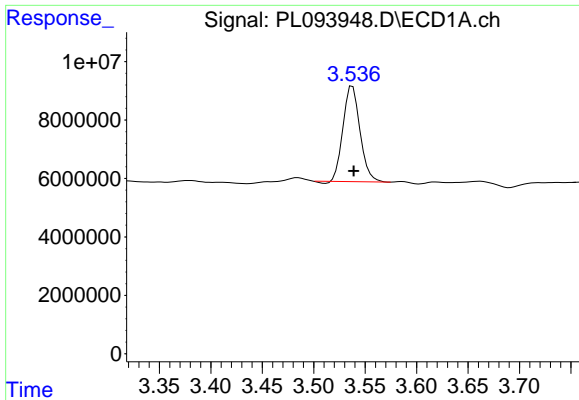
Data Path : Z:\pestpcbsrv\HPCHEM1\ECD_L\Data\PL013125\
 Data File : PL093948.D
 Signal(s) : Signal #1: ECD1A.ch Signal #2: ECD2B.ch
 Acq On : 31 Jan 2025 17:27
 Operator : AR\AJ
 Sample : Q1232-11
 Misc :
 ALS Vial : 18 Sample Multiplier: 1

Instrument :
 ECD_L
 ClientSampleId :
 JPP-42.1-012925

Integration File signal 1: autoint1.e
 Integration File signal 2: autoint2.e
 Quant Time: Feb 01 00:29:10 2025
 Quant Method : Z:\pestpcbsrv\HPCHEM1\ECD_L\methods\PL012125.M
 Quant Title : GC Extractables
 QLast Update : Tue Jan 21 14:58:05 2025
 Response via : Initial Calibration
 Integrator: ChemStation

Volume Inj. : 1 µl
 Signal #1 Phase : ZB-MR1 Signal #2 Phase: ZB-MR2
 Signal #1 Info : 30M x 0.32mm x0.5 Signal #2 Info : 30M x 0.32mm x0.25µm

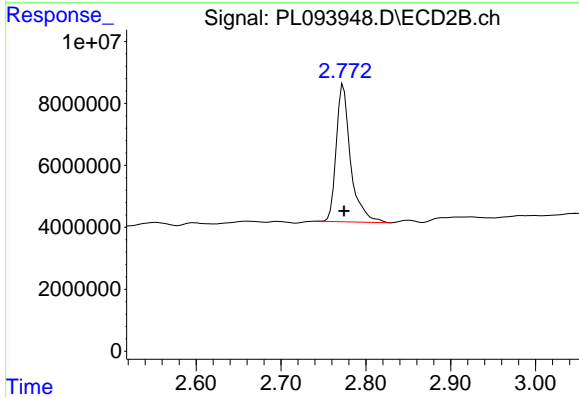




#1 Tetrachloro-m-xylene

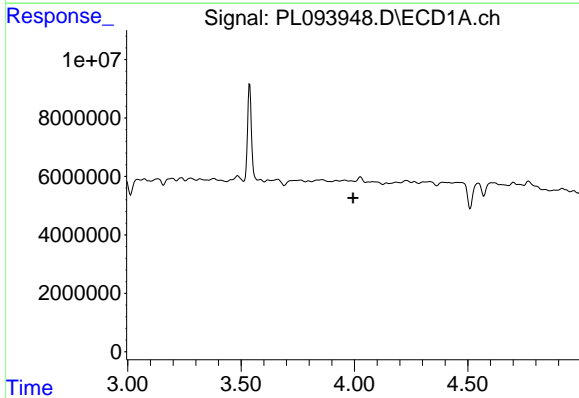
R.T.: 3.538 min
 Delta R.T.: -0.001 min
 Response: 37447118
 Conc: 13.91 ng/ml

Instrument :
 ECD_L
 ClientSampleId :
 JPP-42.1-012925



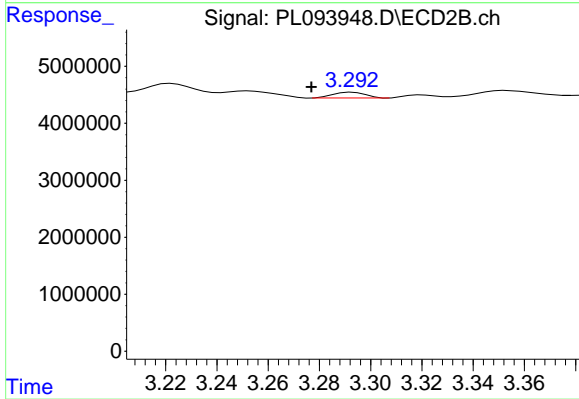
#1 Tetrachloro-m-xylene

R.T.: 2.774 min
 Delta R.T.: 0.000 min
 Response: 52134315
 Conc: 15.97 ng/ml



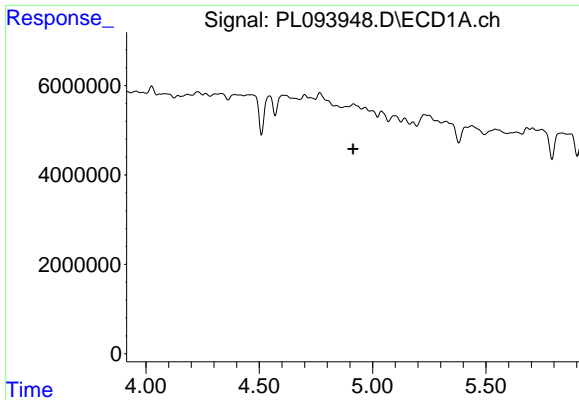
#2 alpha-BHC

R.T.: 0.000 min
 Exp R.T. : 3.995 min
 Response: 0
 Conc: N.D.



#2 alpha-BHC

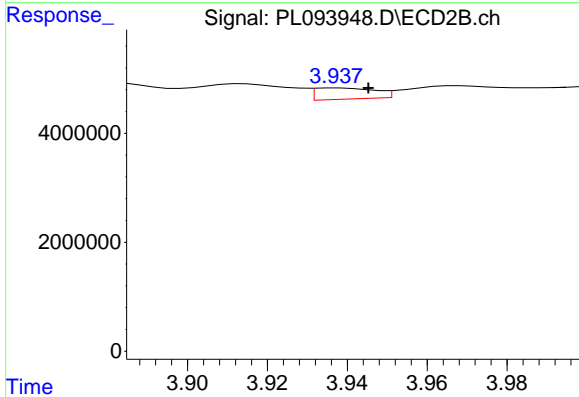
R.T.: 3.293 min
 Delta R.T.: 0.016 min
 Response: 903194
 Conc: 0.18 ng/ml



#4 Heptachlor

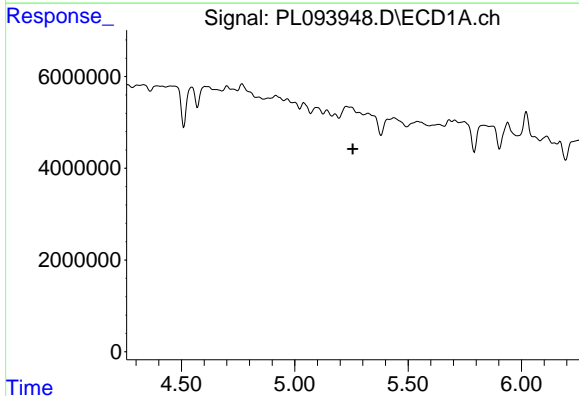
R.T.: 0.000 min
 Exp R.T. : 4.914 min
 Response: 0
 Conc: N.D.

Instrument :
 ECD_L
 ClientSampleId :
 JPP-42.1-012925



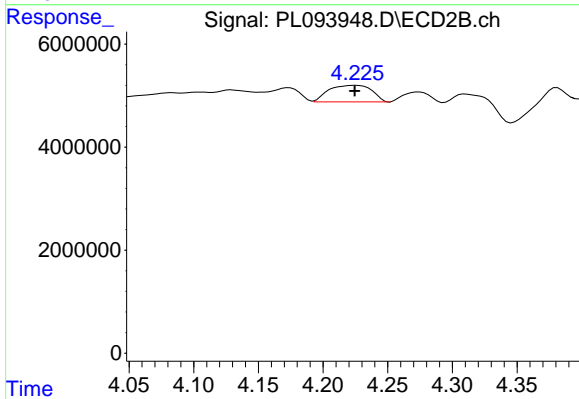
#4 Heptachlor

R.T.: 3.937 min
 Delta R.T.: -0.008 min
 Response: 2150587
 Conc: 0.46 ng/ml



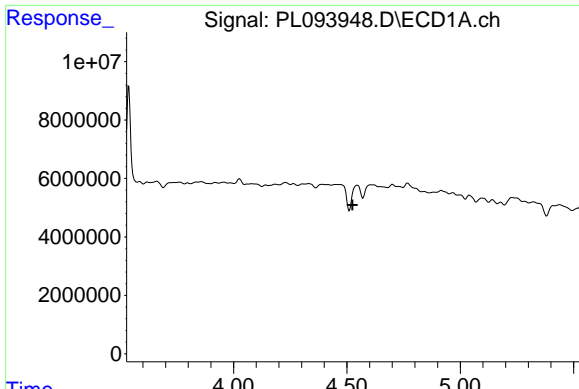
#5 Aldrin

R.T.: 0.000 min
 Exp R.T. : 5.256 min
 Response: 0
 Conc: N.D.



#5 Aldrin

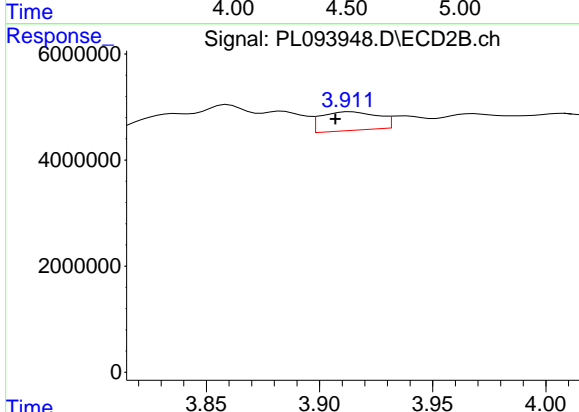
R.T.: 4.226 min
 Delta R.T.: 0.001 min
 Response: 7471223
 Conc: 1.64 ng/ml



#6 beta-BHC

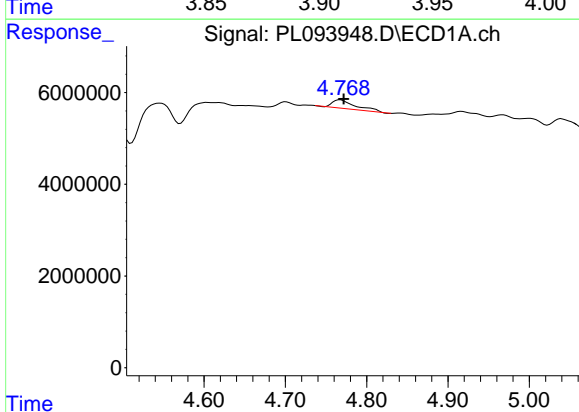
R.T.: 4.546 min
 Delta R.T.: 0.021 min
 Response: -3246758
 Conc: N.D.

Instrument :
 ECD_L
 ClientSampleId :
 JPP-42.1-012925



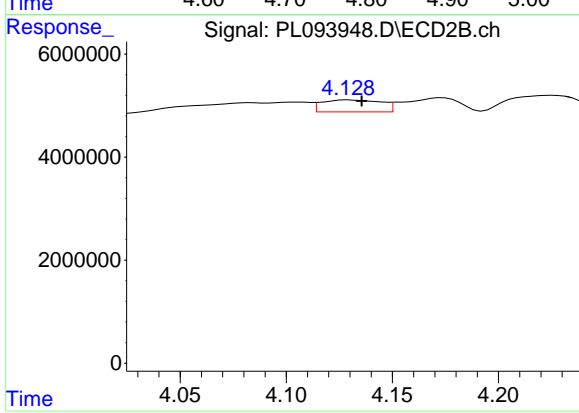
#6 beta-BHC

R.T.: 3.914 min
 Delta R.T.: 0.007 min
 Response: 6131765
 Conc: 3.07 ng/ml



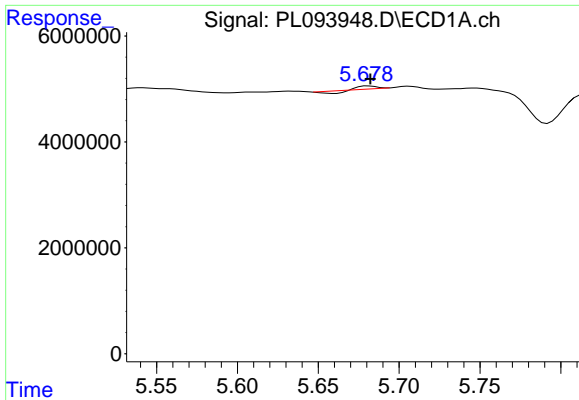
#7 delta-BHC

R.T.: 4.768 min
 Delta R.T.: -0.004 min
 Response: 3746427
 Conc: 1.07 ng/ml



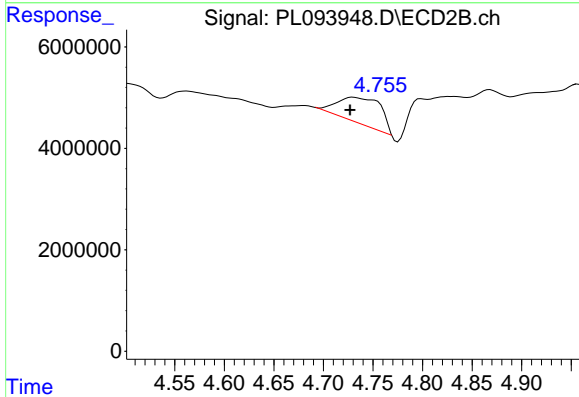
#7 delta-BHC

R.T.: 4.129 min
 Delta R.T.: -0.006 min
 Response: 4520092
 Conc: 0.95 ng/ml

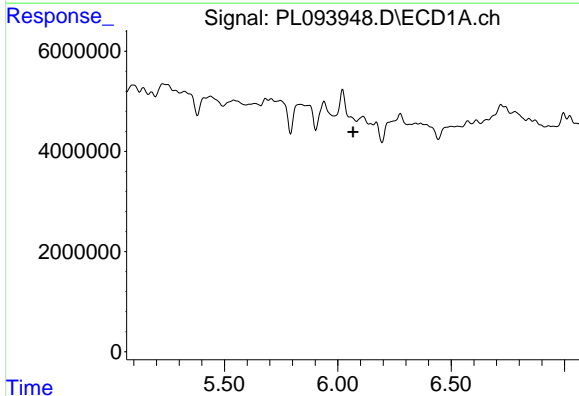


#8 Heptachlor epoxide
 R.T.: 5.681 min
 Delta R.T.: 0.000 min
 Response: 71040
 Conc: 0.02 ng/ml

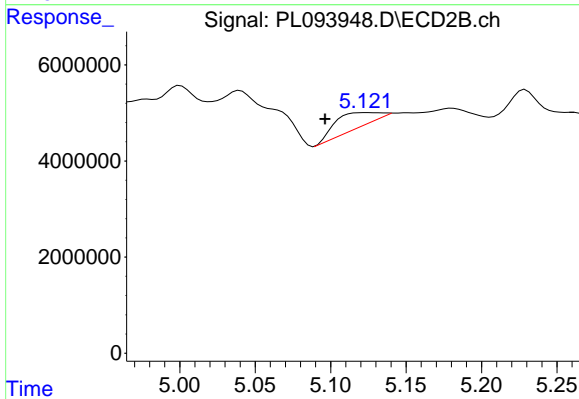
Instrument :
 ECD_L
 ClientSampleId :
 JPP-42.1-012925



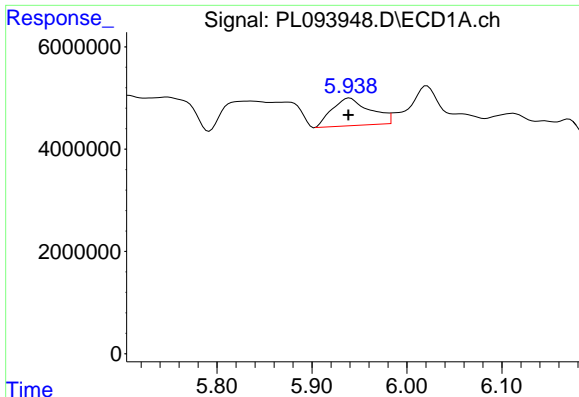
#8 Heptachlor epoxide
 R.T.: 4.730 min
 Delta R.T.: 0.003 min
 Response: 15014945
 Conc: 3.59 ng/ml



#9 Endosulfan I
 R.T.: 0.000 min
 Exp R.T. : 6.067 min
 Response: 0
 Conc: N.D.



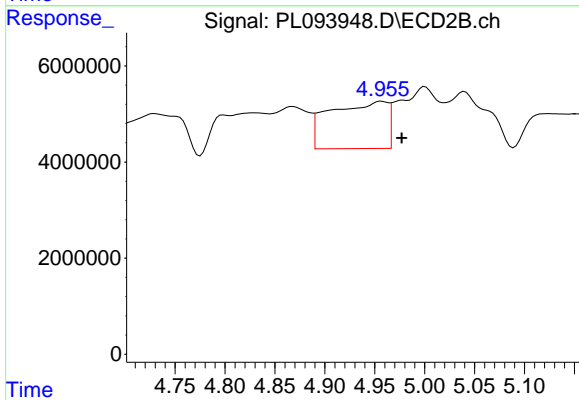
#9 Endosulfan I
 R.T.: 5.125 min
 Delta R.T.: 0.028 min
 Response: 6550024
 Conc: 1.69 ng/ml



#10 gamma-Chlordane

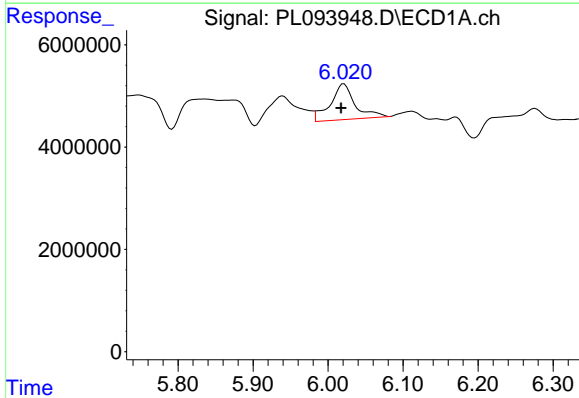
R.T.: 5.940 min
 Delta R.T.: 0.001 min
 Response: 15066064
 Conc: 5.41 ng/ml

Instrument :
 ECD_L
 ClientSampleId :
 JPP-42.1-012925



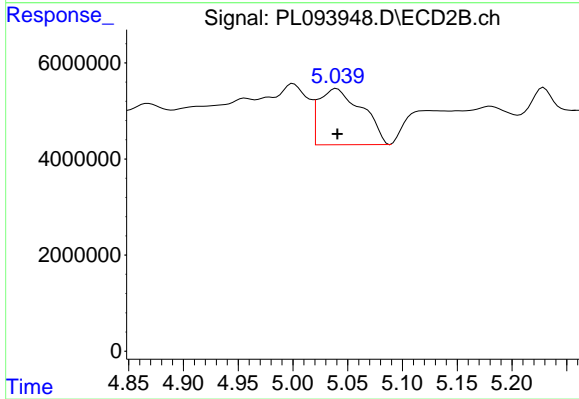
#10 gamma-Chlordane

R.T.: 4.957 min
 Delta R.T.: -0.020 min
 Response: 39037737
 Conc: 9.21 ng/ml



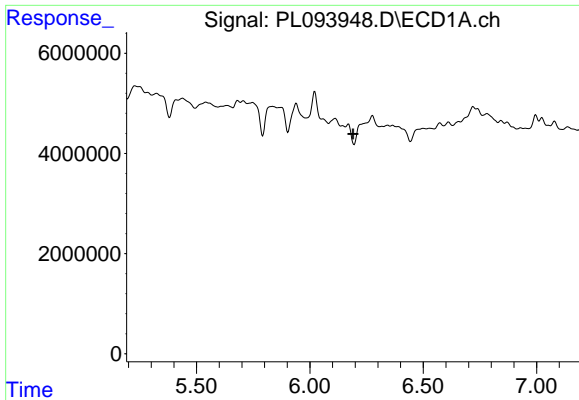
#11 alpha-Chlordane

R.T.: 6.021 min
 Delta R.T.: 0.004 min
 Response: 15903883
 Conc: 5.70 ng/ml



#11 alpha-Chlordane

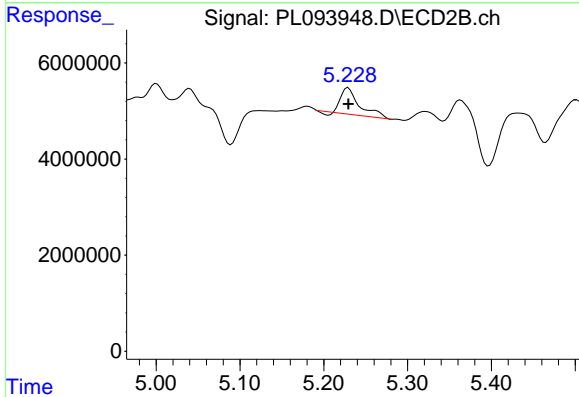
R.T.: 5.040 min
 Delta R.T.: 0.000 min
 Response: 32234118
 Conc: 7.70 ng/ml



#12 4,4'-DDE

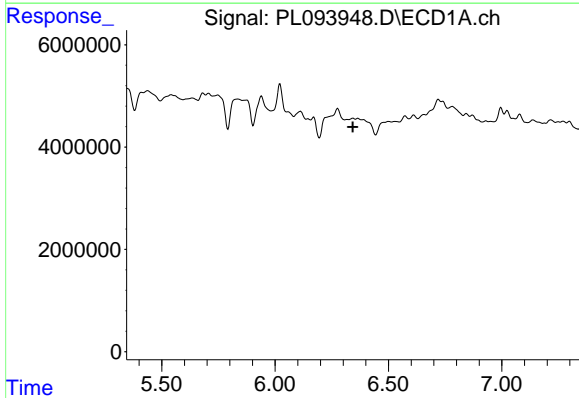
R.T.: 0.000 min
 Exp R.T.: 6.191 min
 Response: 0
 Conc: N.D.

Instrument :
 ECD_L
 ClientSampleId :
 JPP-42.1-012925



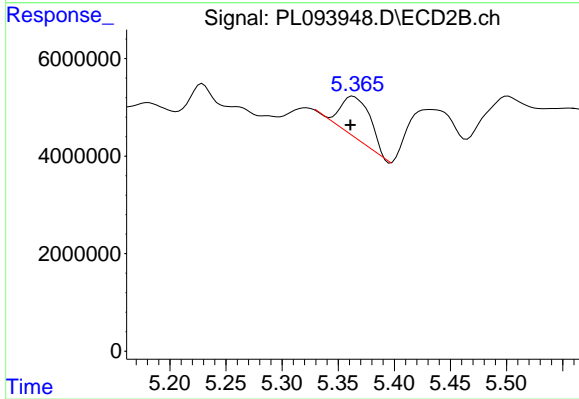
#12 4,4'-DDE

R.T.: 5.229 min
 Delta R.T.: 0.000 min
 Response: 8094027
 Conc: 2.02 ng/ml



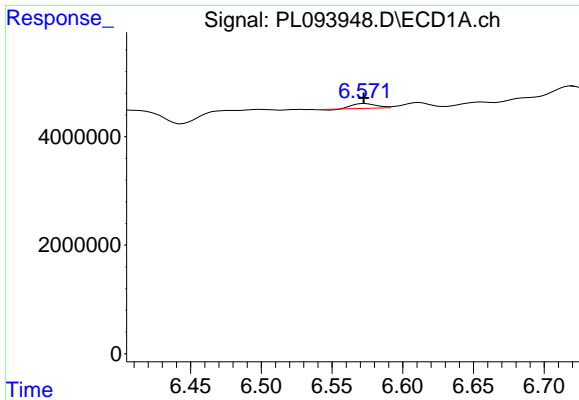
#13 Dieldrin

R.T.: 0.000 min
 Exp R.T.: 6.343 min
 Response: 0
 Conc: N.D.



#13 Dieldrin

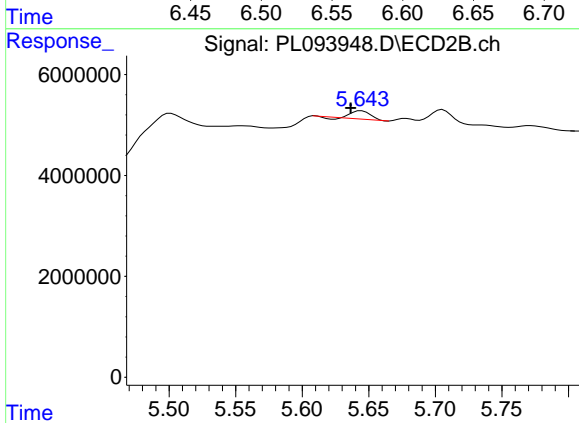
R.T.: 5.363 min
 Delta R.T.: 0.003 min
 Response: 15791042
 Conc: 3.68 ng/ml



#14 Endrin

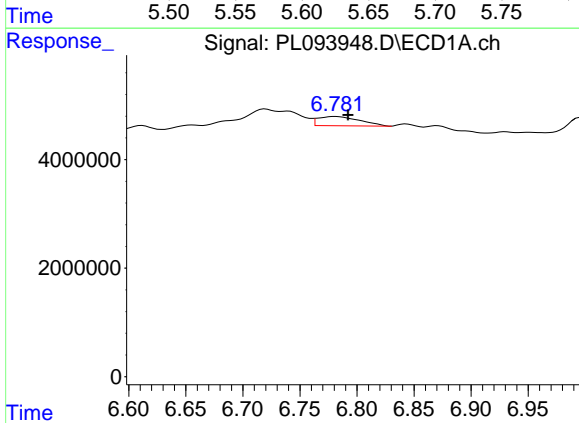
R.T.: 6.573 min
 Delta R.T.: 0.000 min
 Response: 1002473
 Conc: 0.43 ng/ml

Instrument :
 ECD_L
 ClientSampleId :
 JPP-42.1-012925



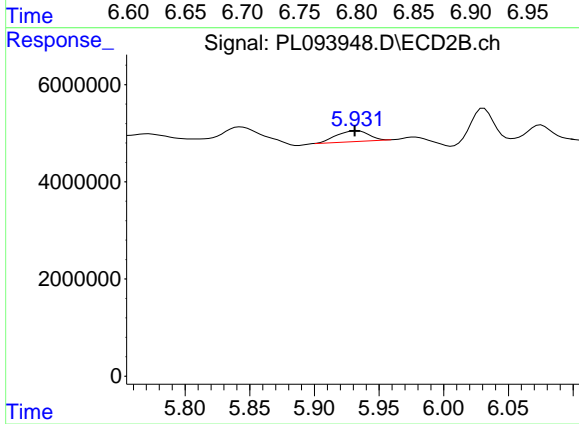
#14 Endrin

R.T.: 5.645 min
 Delta R.T.: 0.008 min
 Response: 1518499
 Conc: 0.41 ng/ml



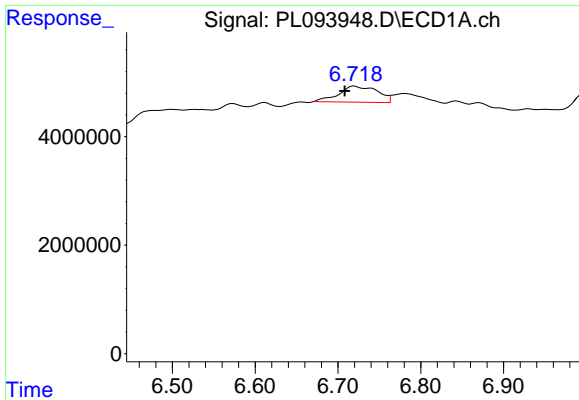
#15 Endosulfan II

R.T.: 6.782 min
 Delta R.T.: -0.011 min
 Response: 4289082
 Conc: 1.78 ng/ml



#15 Endosulfan II

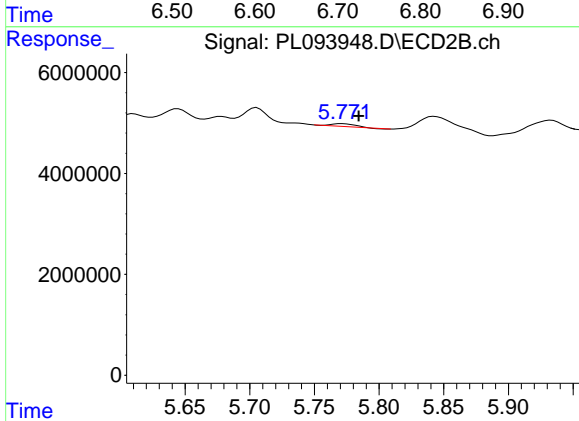
R.T.: 5.933 min
 Delta R.T.: 0.002 min
 Response: 3855521
 Conc: 1.04 ng/ml



#16 4,4'-DDD

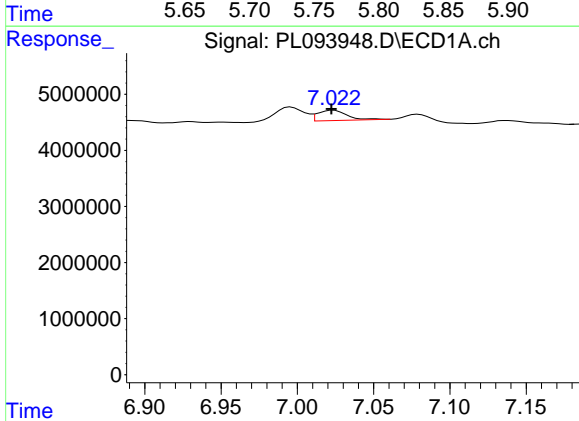
R.T.: 6.720 min
 Delta R.T.: 0.012 min
 Response: 9596603
 Conc: 5.05 ng/ml

Instrument :
 ECD_L
 ClientSampleId :
 JPP-42.1-012925



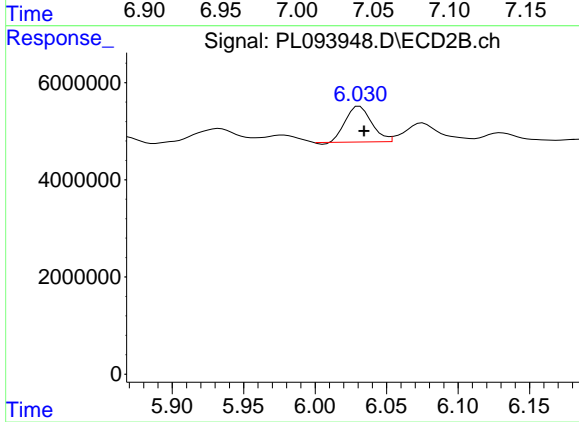
#16 4,4'-DDD

R.T.: 5.772 min
 Delta R.T.: -0.013 min
 Response: 670635
 Conc: 0.21 ng/ml



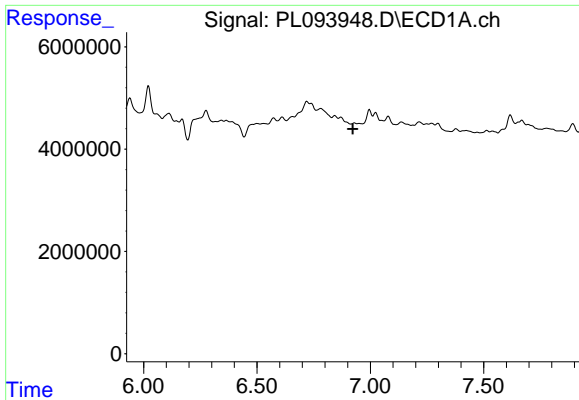
#17 4,4'-DDT

R.T.: 7.024 min
 Delta R.T.: 0.001 min
 Response: 2446837
 Conc: 1.24 ng/ml



#17 4,4'-DDT

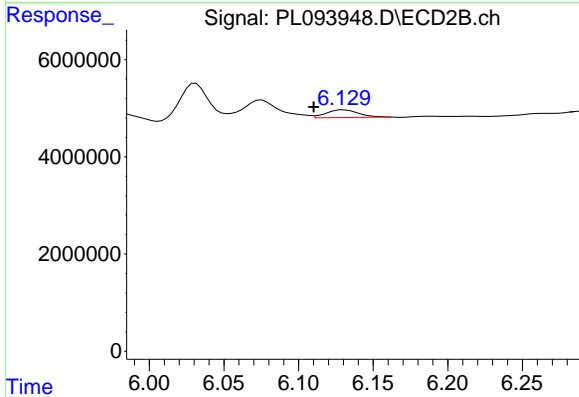
R.T.: 6.031 min
 Delta R.T.: -0.003 min
 Response: 9362534
 Conc: 2.88 ng/ml



#18 Endrin aldehyde

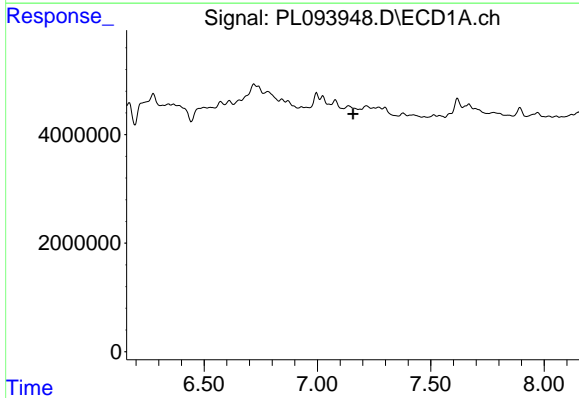
R.T.: 0.000 min
 Exp R.T.: 6.923 min
 Response: 0
 Conc: N.D.

Instrument :
 ECD_L
 ClientSampleId :
 JPP-42.1-012925



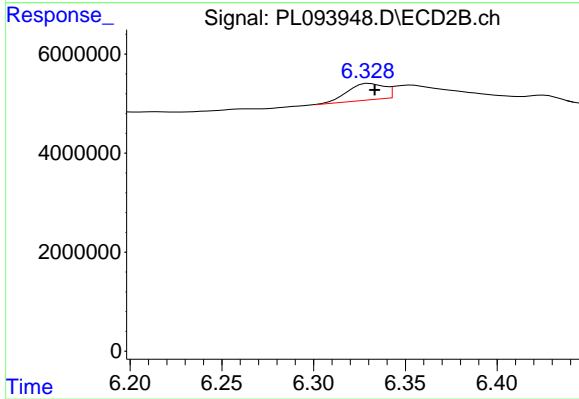
#18 Endrin aldehyde

R.T.: 6.130 min
 Delta R.T.: 0.020 min
 Response: 2386524
 Conc: 0.78 ng/ml



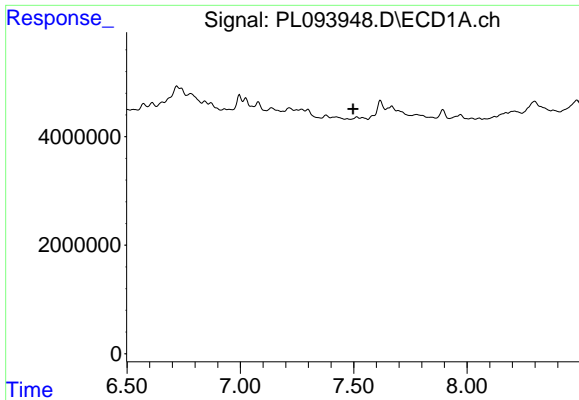
#19 Endosulfan Sulfate

R.T.: 0.000 min
 Exp R.T.: 7.157 min
 Response: 0
 Conc: N.D.



#19 Endosulfan Sulfate

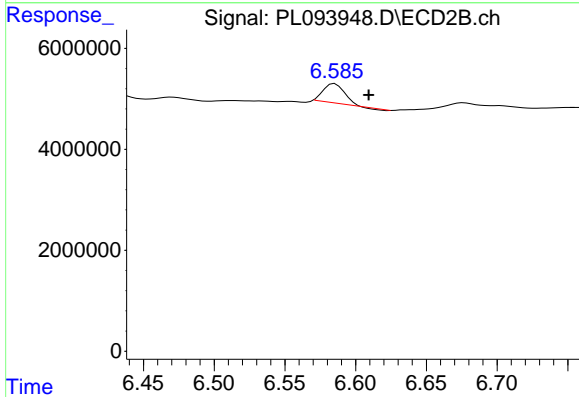
R.T.: 6.331 min
 Delta R.T.: -0.002 min
 Response: 4632727
 Conc: 1.30 ng/ml



#20 Methoxychlor

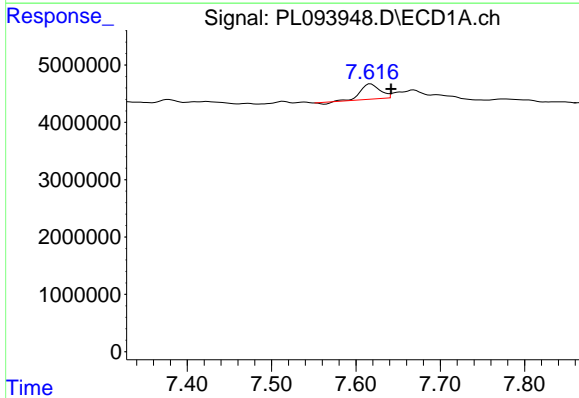
R.T.: 0.000 min
 Exp R.T.: 7.498 min
 Response: 0
 Conc: N.D.

Instrument :
 ECD_L
 ClientSampleId :
 JPP-42.1-012925



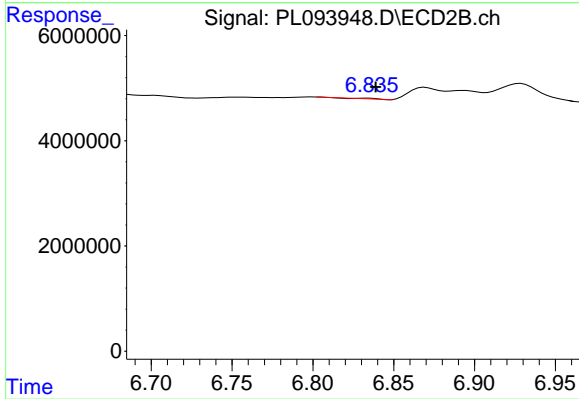
#20 Methoxychlor

R.T.: 6.585 min
 Delta R.T.: -0.024 min
 Response: 3910662
 Conc: 2.19 ng/ml



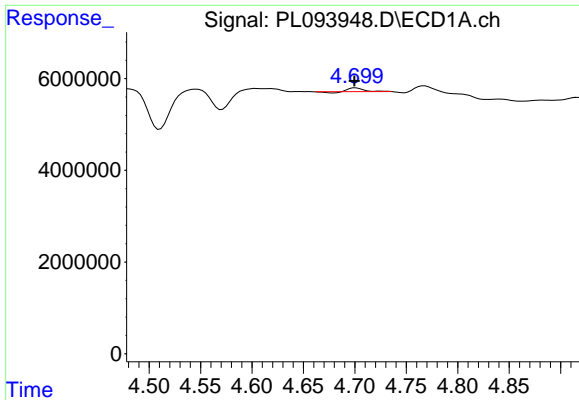
#21 Endrin ketone

R.T.: 7.618 min
 Delta R.T.: -0.024 min
 Response: 3969452
 Conc: 1.57 ng/ml



#21 Endrin ketone

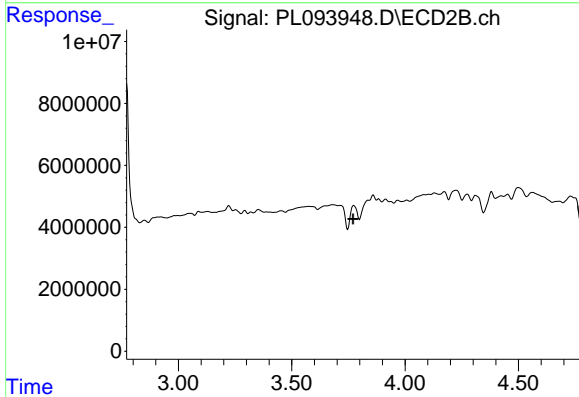
R.T.: 6.834 min
 Delta R.T.: -0.005 min
 Response: 145097
 Conc: 0.03 ng/ml



#23 Chlordane-1

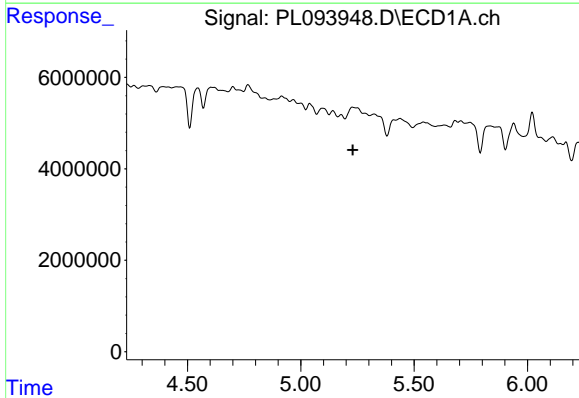
R.T.: 4.701 min
 Delta R.T.: 0.001 min
 Response: 678495
 Conc: 5.84 ng/ml

Instrument :
 ECD_L
 ClientSampleId :
 JPP-42.1-012925



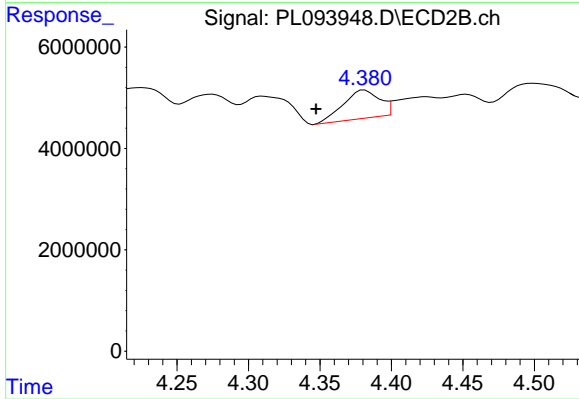
#23 Chlordane-1

R.T.: 3.774 min
 Delta R.T.: 0.003 min
 Response: -1406096
 Conc: N.D.



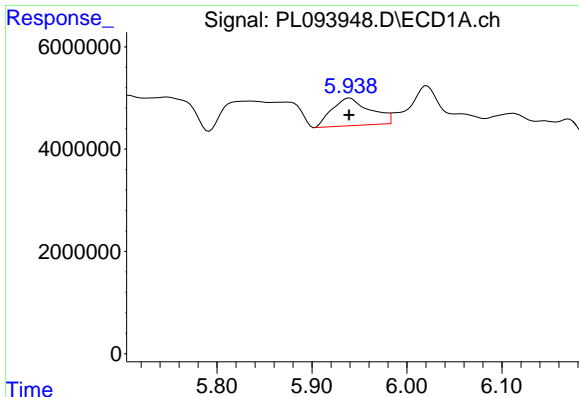
#24 Chlordane-2

R.T.: 0.000 min
 Exp R.T. : 5.229 min
 Response: 0
 Conc: N.D.



#24 Chlordane-2

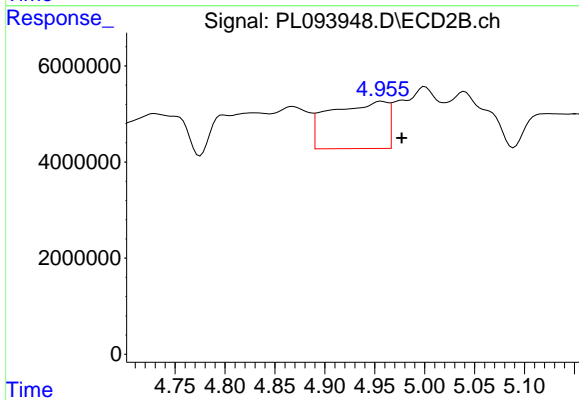
R.T.: 4.381 min
 Delta R.T.: 0.034 min
 Response: 9794393
 Conc: 66.75 ng/ml



#25 Chlordane-3

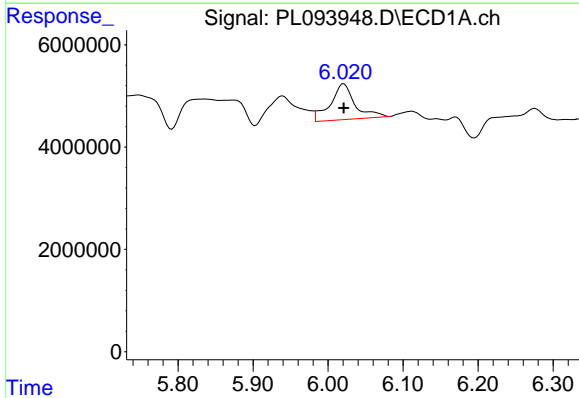
R.T.: 5.940 min
 Delta R.T.: 0.000 min
 Response: 15066064
 Conc: 38.41 ng/ml

Instrument :
 ECD_L
 ClientSampleId :
 JPP-42.1-012925



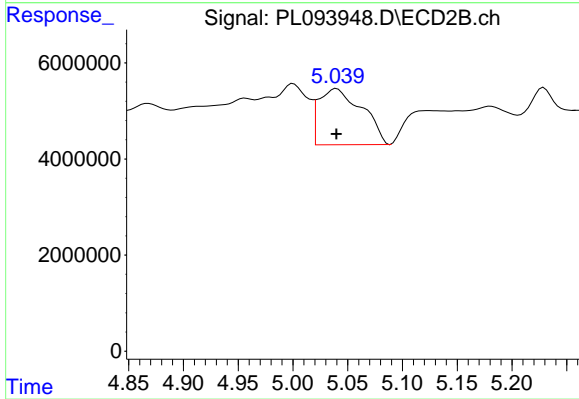
#25 Chlordane-3

R.T.: 4.957 min
 Delta R.T.: -0.020 min
 Response: 39037737
 Conc: 89.78 ng/ml



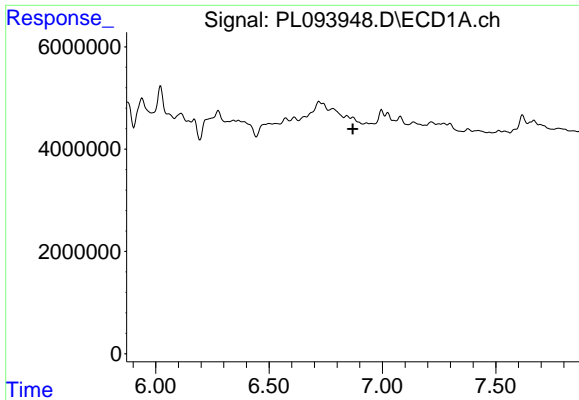
#26 Chlordane-4

R.T.: 6.021 min
 Delta R.T.: 0.000 min
 Response: 15903883
 Conc: 33.83 ng/ml



#26 Chlordane-4

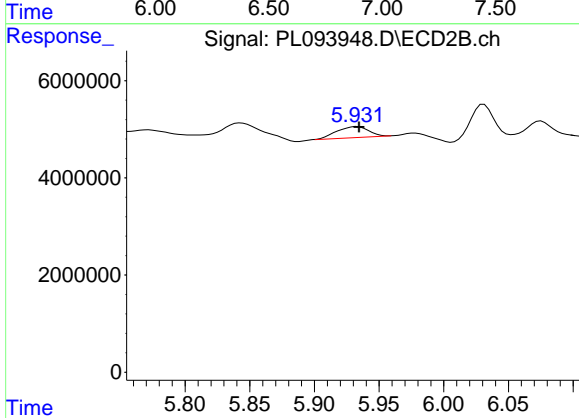
R.T.: 5.040 min
 Delta R.T.: 0.000 min
 Response: 32234118
 Conc: 76.08 ng/ml



#27 Chlordane-5

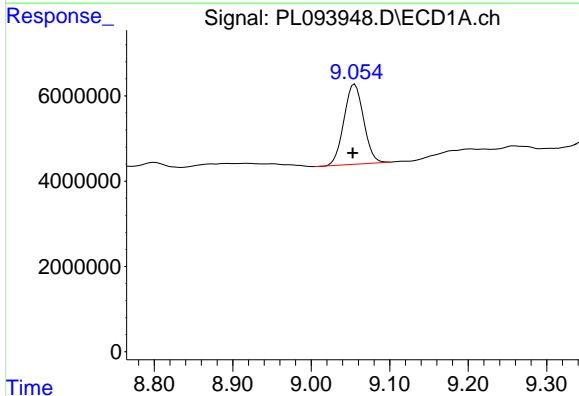
R.T.: 0.000 min
Exp R.T.: 6.870 min
Response: 0
Conc: N.D.

Instrument :
ECD_L
ClientSampleId :
JPP-42.1-012925



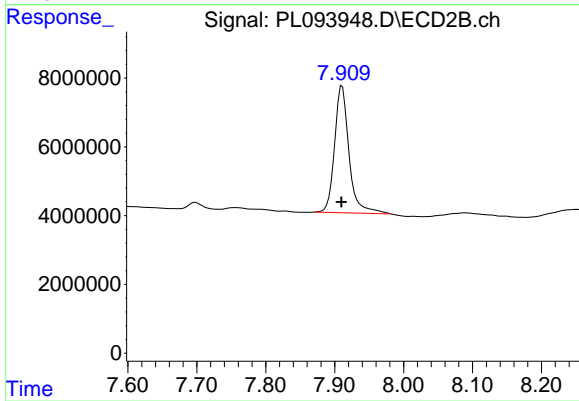
#27 Chlordane-5

R.T.: 5.933 min
Delta R.T.: -0.001 min
Response: 3855521
Conc: 25.17 ng/ml



#28 Decachlorobiphenyl

R.T.: 9.055 min
Delta R.T.: 0.003 min
Response: 32555044
Conc: 15.56 ng/ml



#28 Decachlorobiphenyl

R.T.: 7.911 min
Delta R.T.: 0.001 min
Response: 53648194
Conc: 15.31 ng/ml