

Data Path : Z:\pestpcbsrv\HPCHEM1\FID_E\Data\FE013125\
 Data File : FE052200.D
 Signal(s) : FID1B.ch
 Acq On : 01 Feb 2025 05:15
 Operator : YP\AJ
 Sample : I.BLK
 Misc :
 ALS Vial : 96 Sample Multiplier: 1

Instrument :
 FID_E
ClientSampleId :
 I.BLK

Manual Integrations
APPROVED
 Reviewed By :Yogesh Patel 02/03/2025
 Supervised By :Ankita Jodhani 02/03/2025

Integration File: autoint1.e
 Quant Time: Feb 03 00:18:49 2025
 Quant Method : Z:\pestpcbsrv\HPCHEM1\FID_E\methods\FE012325.M
 Quant Title :
 QLast Update : Fri Jan 24 03:06:38 2025
 Response via : Initial Calibration
 Integrator: ChemStation

Volume Inj. : 1uL
 Signal Phase : Rxi-1ms
 Signal Info : 20mx0.18mmx0.18um

Compound	R.T.	Response	Conc Units

System Monitoring Compounds			
9) S TETRACOSANE-d50 (SURR...	15.290	1746092	17.531 ug/mlm
Target Compounds			

(f)=RT Delta > 1/2 Window (m)=manual int.

Data Path : Z:\pestpcbsrv\HPCHEM1\FID_E\Data\FE013125\
Data File : FE052200.D
Signal(s) : FID1B.ch
Acq On : 01 Feb 2025 05:15
Operator : YP\AJ
Sample : I.BLK
Misc :
ALS Vial : 96 Sample Multiplier: 1

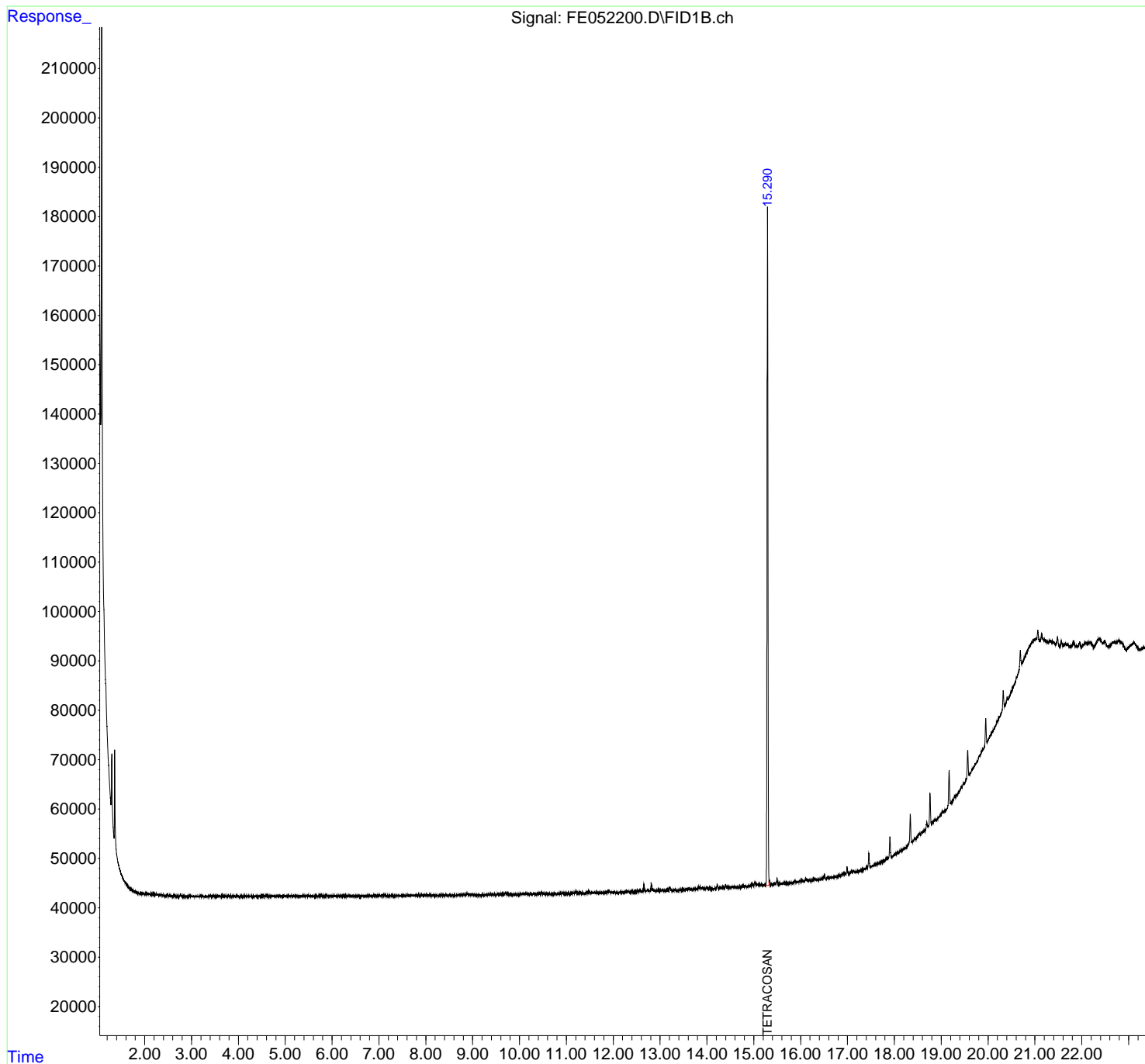
Instrument :
FID_E
ClientSampleId :
I.BLK

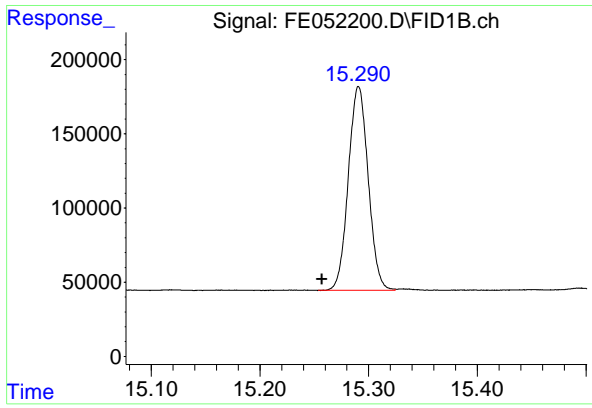
Manual Integrations
APPROVED

Reviewed By :Yogesh Patel 02/03/2025
Supervised By :Ankita Jodhani 02/03/2025

Integration File: autoint1.e
Quant Time: Feb 03 00:18:49 2025
Quant Method : Z:\pestpcbsrv\HPCHEM1\FID_E\methods\FE012325.M
Quant Title :
QLast Update : Fri Jan 24 03:06:38 2025
Response via : Initial Calibration
Integrator: ChemStation

Volume Inj. : 1uL
Signal Phase : Rxi-1ms
Signal Info : 20mx0.18mmx0.18um





#9 TETRACOSANE-d50 (SURROGATE)

R.T.: 15.290 min
Delta R.T.: 0.033 min
Response: 1746092
Conc: 17.53 ug/ml

Instrument :

FID_E

ClientSampleId :

I.BLK

Manual Integrations

APPROVED

Reviewed By :Yogesh Patel 02/03/2025

Supervised By :Ankita Jodhani 02/03/2025