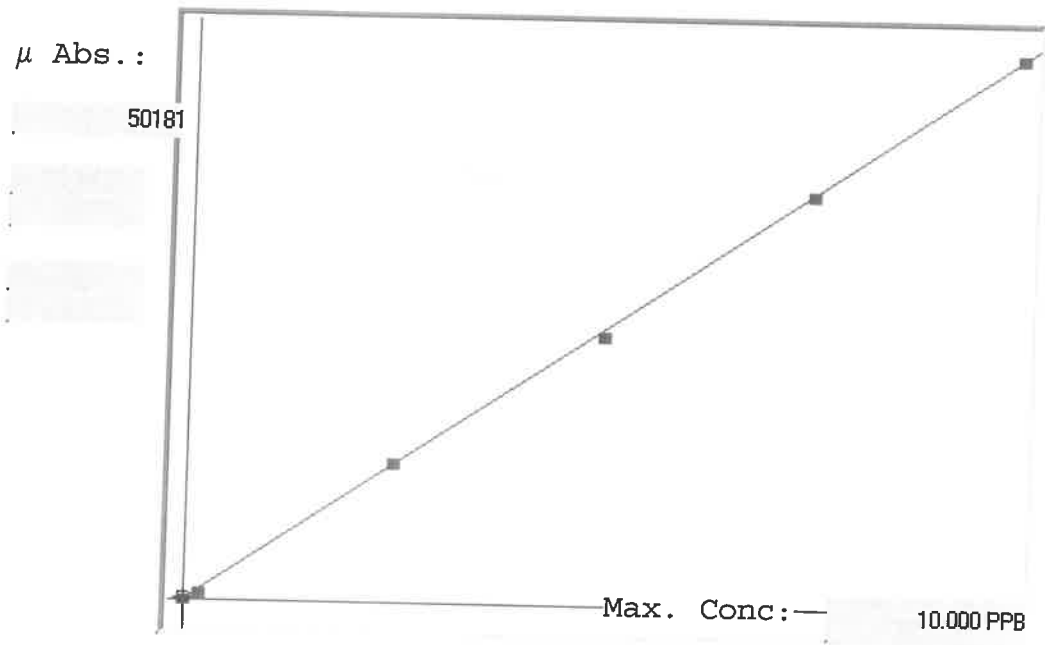


LB134551

7470A

INSTRUMENT ID: CV1

Linear



A= 0.0000e+000

B= 1.9985e-004

C= -2.3308e-003

Rho= 0.9999319

Accept=Accepted

Std ID	Conc.	Calc.	Dev.	Mean	SD or %RSD	Rep 1	Rep 2	Rep 3	Rep 4	Rep 5	
0.0	0.000	0.034	0.034	182	0.000	182					
0.2	0.200	0.170	-0.030	864	0.0 %	864					
2.5	2.500	2.547	0.047	12756	0.0 %	12756					
5.0	5.000	4.921	-0.079	24637	0.0 %	24637					
7.5	7.500	7.501	0.001	37547	0.0 %	37547					
10.0	10.000	10.026	0.026	50181	0.0 %	50181					

0.000  
1.9985  
-2.3308  
0.9999319  
Accepted

# LB134551 INSTRUMENT ID : CV1

Method: 7470A

Operator: Admin

Date of Analysis: 04 Feb 2025 10:57:27

Sample ID	Extended ID	μ Abs.	Conc	Std Conc	Method	Units	Date	Type	Type
0.0 - 1	50	182	-	0.0000	7470A	PPB	04 Feb 2025 11:12:58	S	Std
0.2 - 1	52	864	-	0.2000	7470A	PPB	04 Feb 2025 11:15:16	S	Std
2.5 - 1	53	12756	-	2.5000	7470A	PPB	04 Feb 2025 11:17:33	S	Std
5.0 - 1	54	24637	-	5.0000	7470A	PPB	04 Feb 2025 11:19:51	S	Std
7.5 - 1	55	37547	-	7.5000	7470A	PPB	04 Feb 2025 11:22:09	S	Std
10.0 - 1	56	50181	-	10.0000	7470A	PPB	04 Feb 2025 11:27:06	S	Std
ICV83 - 1	ICV83	19893	3.9732	-	7470A	PPB	04 Feb 2025 11:29:51	U	SMPL
ICB83 - 1	ICB83	0	-0.0023	-	7470A	PPB	04 Feb 2025 11:32:06	U	SMPL
CCV18 - 1	CCV18	24528	4.8995	-	7470A	PPB	04 Feb 2025 11:34:23	U	SMPL
CCB18 - 1	CCB18	-81	-0.0185	-	7470A	PPB	04 Feb 2025 11:36:38	U	SMPL
CRA - 1	CRA	1118	0.2211	-	7470A	PPB	04 Feb 2025 11:38:56	U	SMPL
HighStd - 1	HighStd	50063	10.0026	-	7470A	PPB	04 Feb 2025 11:41:11	U	SMPL
ChkStd - 1	ChkStd	34446	6.8816	-	7470A	PPB	04 Feb 2025 11:43:27	U	SMPL
PB166489BL - 1	PBW	-212	-0.0447	-	7470A	PPB	04 Feb 2025 11:45:47	U	SMPL
PB166489BS - 1	LCSW	21167	4.2278	-	7470A	PPB	04 Feb 2025 11:51:26	U	SMPL
Q1239-02 - 1	286	322	0.0620	-	7470A	PPB	04 Feb 2025 11:53:42	U	SMPL
Q1239-05 - 1	348	155	0.0286	-	7470A	PPB	04 Feb 2025 11:56:00	U	SMPL
Q1239-08 - 1	RBR22266	129	0.0234	-	7470A	PPB	04 Feb 2025 11:58:17	U	SMPL
Q1239-11 - 1	357	37	0.0051	-	7470A	PPB	04 Feb 2025 12:00:34	U	SMPL
Q1241-04 - 1	JPP-3.5-013025	142	0.0260	-	7470A	PPB	04 Feb 2025 12:02:49	U	SMPL
CCV19 - 1	CCV19	23800	4.7540	-	7470A	PPB	04 Feb 2025 12:05:05	U	SMPL
CCB19 - 1	CCB19	23	0.0023	-	7470A	PPB	04 Feb 2025 12:07:20	U	SMPL
Q1241-08 - 1	JPP-5.3-013025	155	0.0286	-	7470A	PPB	04 Feb 2025 12:09:38	U	SMPL
Q1241-12 - 1	JPP-5.2-013025	222	0.0420	-	7470A	PPB	04 Feb 2025 12:11:53	U	SMPL
Q1241-16 - 1	JPP-5.4-013025	195	0.0366	-	7470A	PPB	04 Feb 2025 12:14:08	U	SMPL
Q1241-20 - 1	JPP-51.4-013025	189	0.0354	-	7470A	PPB	04 Feb 2025 12:16:24	U	SMPL
Q1242-04 - 1	JPP-6.2-013025	51	0.0079	-	7470A	PPB	04 Feb 2025 12:18:39	U	SMPL
Q1262-05 - 1	3762	63	0.0103	-	7470A	PPB	04 Feb 2025 12:20:56	U	SMPL
Q1262-05DUP - 1	3762DUP	55	0.0087	-	7470A	PPB	04 Feb 2025 12:23:13	U	SMPL
Q1262-05MS - 1	3762MS	24967	4.9872	-	7470A	PPB	04 Feb 2025 12:25:30	U	SMPL
Q1262-05MSD - 1	3762MSD	23619	4.7178	-	7470A	PPB	04 Feb 2025 12:27:47	U	SMPL
CCV20 - 1	CCV20	23455	4.6851	-	7470A	PPB	04 Feb 2025 12:30:05	U	SMPL
CCB20 - 1	CCB20	71	0.0119	-	7470A	PPB	04 Feb 2025 12:32:23	U	SMPL
PB166423TB - 1	PB166423TB	182	0.0340	-	7470A	PPB	04 Feb 2025 12:34:40	U	SMPL
Q1262-05LX5 - 1		28	0.0033	-	7470A	PPB	04 Feb 2025 12:36:55	U	SMPL
Q1262-05A - 1		22294	4.4530	-	7470A	PPB	04 Feb 2025 12:39:11	U	SMPL
CCV21 - 1	CCV21	26093	5.2123	-	7470A	PPB	04 Feb 2025 12:41:26	U	SMPL
CCB21 - 1	CCB21	-70	-0.0163	-	7470A	PPB	04 Feb 2025 12:43:44	U	SMPL