

Data Path : Z:\pestpcbsrv\HPCHEM1\ECD_L\Data\PL020325\
 Data File : PL094013.D
 Signal(s) : Signal #1: ECD1A.ch Signal #2: ECD2B.ch
 Acq On : 03 Feb 2025 20:29
 Operator : AR\AJ
 Sample : Q1241-04MS
 Misc :
 ALS Vial : 32 Sample Multiplier: 1

Instrument :
 ECD_L
 ClientSampleId :
 JPP-3.5-013025MS

Manual Integrations
 APPROVED

Reviewed By :Abdul Mirza 02/04/2025
 Supervised By :Ankita Jodhani 02/04/2025

Integration File signal 1: autoint1.e
 Integration File signal 2: autoint2.e
 Quant Time: Feb 04 00:50:32 2025
 Quant Method : Z:\pestpcbsrv\HPCHEM1\ECD_L\methods\PL012125.M
 Quant Title : GC Extractables
 QLast Update : Tue Jan 21 14:58:05 2025
 Response via : Initial Calibration
 Integrator: ChemStation

Volume Inj. : 1 µl
 Signal #1 Phase : ZB-MR2 Signal #2 Phase: ZB-MR2
 Signal #1 Info : 30M x 0.32mm x0.5 Signal #2 Info : 30M x 0.32mm x0.25µm

Compound	RT#1	RT#2	Resp#1	Resp#2	ng/ml	ng/ml

System Monitoring Compounds						
1) SA Tetrachlo...	3.539	2.774	61560756	72900196	22.862	22.334
28) SA Decachlor...	9.056	7.910	52717126	93293086	25.200	26.624
Target Compounds						
2) A alpha-BHC	3.995	3.276	193.4E6	249.7E6	50.449	51.079
3) MA gamma-BHC...	4.326	3.606	185.1E6	234.7E6	50.261m	49.512
4) MA Heptachlor	4.915	3.944	173.2E6	238.6E6	52.853	51.262
5) MB Aldrin	5.257	4.224	162.8E6	222.0E6	49.746	48.667
6) B beta-BHC	4.526	3.906	81044226	102.2E6	50.422	51.150
7) B delta-BHC	4.773	4.135	178.2E6	240.2E6	50.824	50.548
8) B Heptachlo...	5.684	4.726	147.2E6	213.5E6	49.496	51.069
9) A Endosulfan I	6.069	5.096	134.8E6	205.6E6	51.016	53.020
10) B gamma-Chl...	5.940	4.976	143.9E6	230.4E6	51.624	54.370
11) B alpha-Chl...	6.019	5.040	144.4E6	222.6E6	51.804	53.159
12) B 4,4'-DDE	6.193	5.229	134.4E6	221.4E6	55.187	55.207
13) MA Dieldrin	6.345	5.360	142.5E6	226.6E6	51.320	52.744
14) MA Endrin	6.573	5.636	122.3E6	206.3E6	52.139m	55.856
15) B Endosulfa...	6.795	5.931	124.1E6	201.5E6	51.497	54.402
16) A 4,4'-DDD	6.711	5.784	108.0E6	180.5E6	56.812	57.194
17) MA 4,4'-DDT	7.024	6.034	111.7E6	192.2E6	56.624	59.067
18) B Endrin al...	6.925	6.110	94982600	155.0E6	48.858	50.913
19) B Endosulfa...	7.159	6.333	114.0E6	193.0E6	50.344	54.117
20) A Methoxychlor	7.501	6.609	58283509	103.1E6	55.859	57.650
21) B Endrin ke...	7.644	6.838	124.5E6	225.1E6	49.349	53.663
22) Mirex	8.117	7.018	93754803	166.6E6	45.021	49.257

(f)=RT Delta > 1/2 Window (#)=Amounts differ by > 25% (m)=manual int.

Data Path : Z:\pestpcbsrv\HPCHEM1\ECD_L\Data\PL020325\
 Data File : PL094013.D
 Signal(s) : Signal #1: ECD1A.ch Signal #2: ECD2B.ch
 Acq On : 03 Feb 2025 20:29
 Operator : AR\AJ
 Sample : Q1241-04MS
 Misc :
 ALS Vial : 32 Sample Multiplier: 1

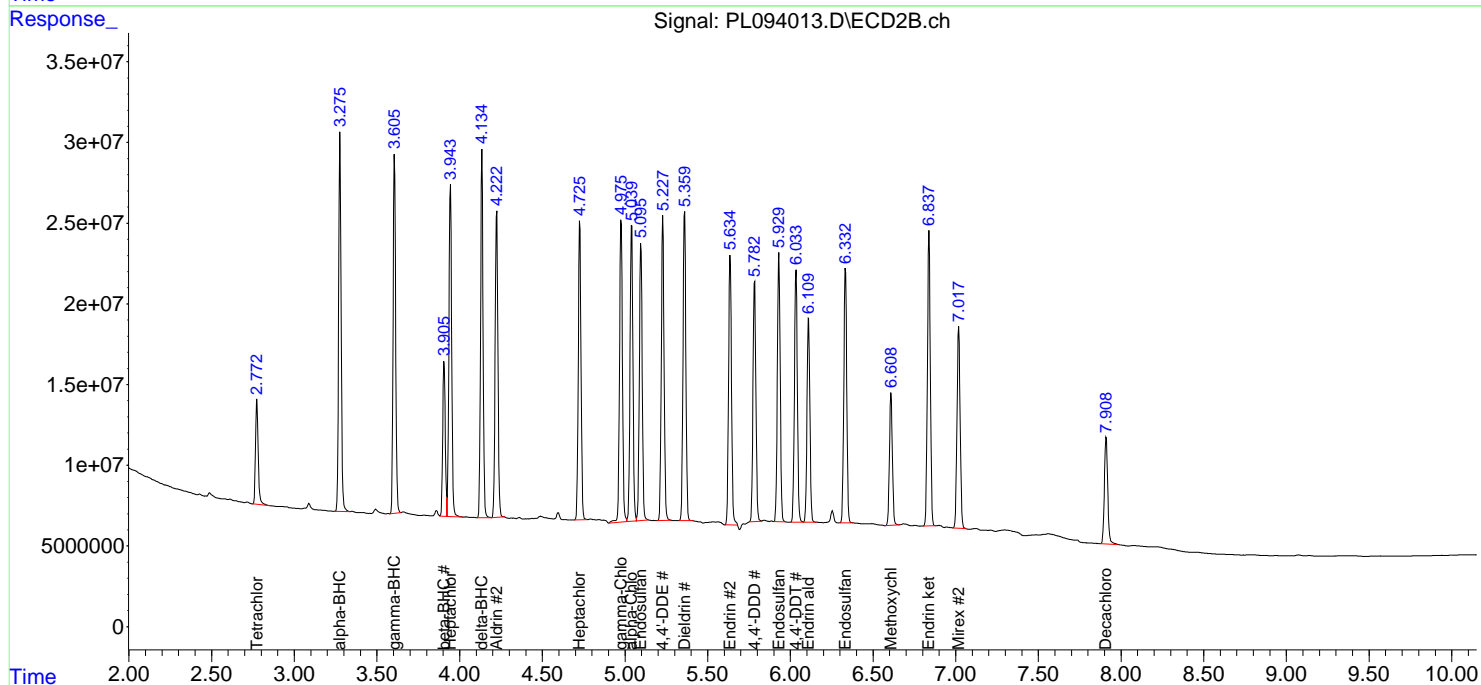
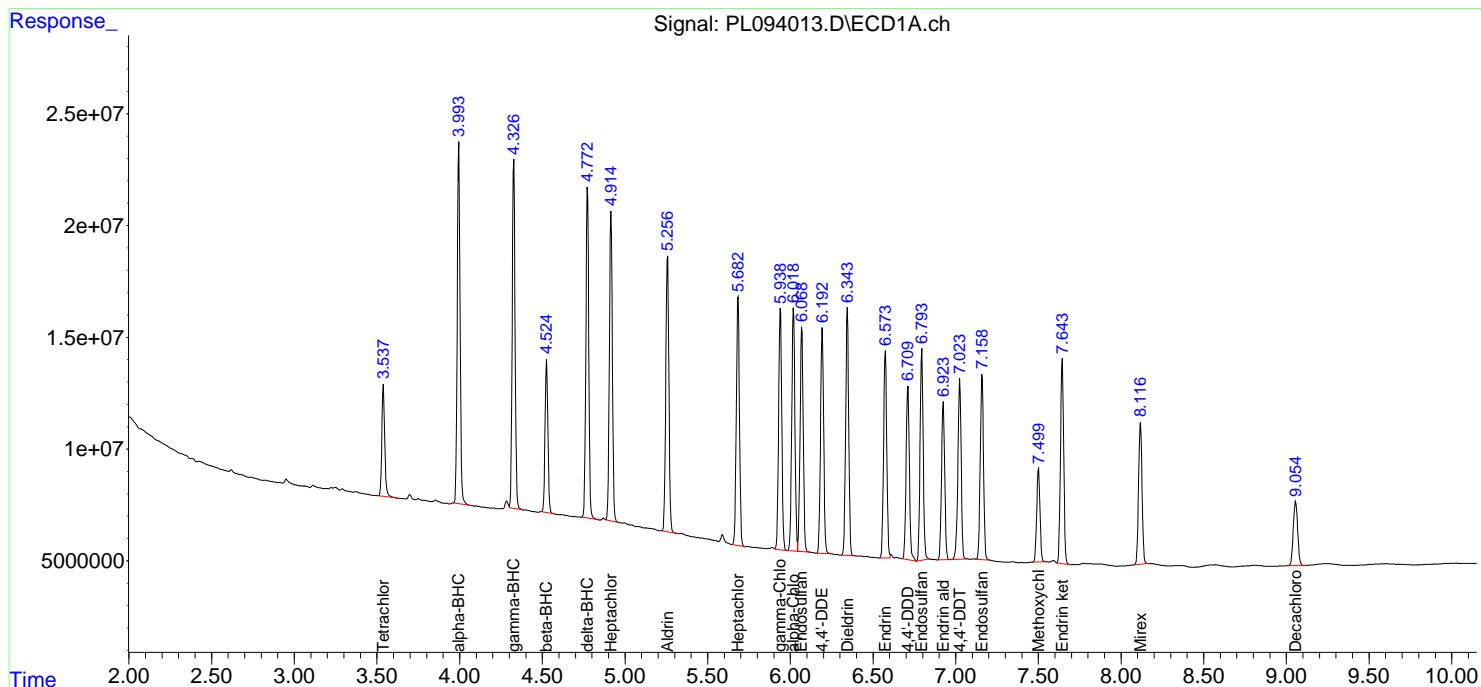
Instrument :
 ECD_L
ClientSampleId :
 JPP-3.5-013025MS

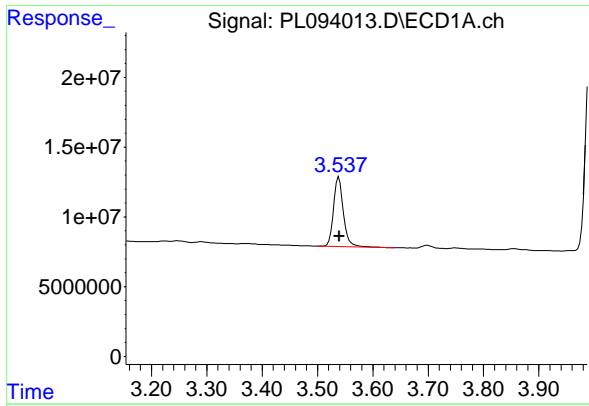
Manual Integrations
APPROVED

Reviewed By :Abdul Mirza 02/04/2025
 Supervised By :Ankita Jodhani 02/04/2025

Integration File signal 1: autoint1.e
 Integration File signal 2: autoint2.e
 Quant Time: Feb 04 00:50:32 2025
 Quant Method : Z:\pestpcbsrv\HPCHEM1\ECD_L\methods\PL012125.M
 Quant Title : GC Extractables
 QLast Update : Tue Jan 21 14:58:05 2025
 Response via : Initial Calibration
 Integrator: ChemStation

Volume Inj. : 1 µl
 Signal #1 Phase : ZB-MR1 Signal #2 Phase: ZB-MR2
 Signal #1 Info : 30M x 0.32mm x0.5 Signal #2 Info : 30M x 0.32mm x0.25µm





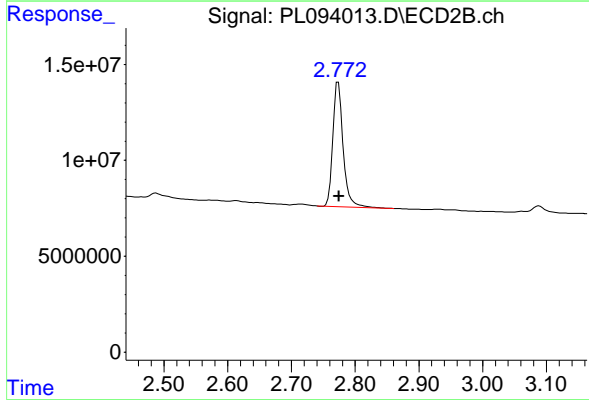
#1 Tetrachloro-m-xylene

R.T.: 3.539 min
 Delta R.T.: 0.000 min
 Response: 61560756
 Conc: 22.86 ng/ml

Instrument : ECD_L
 Client SampleId : JPP-3.5-013025MS

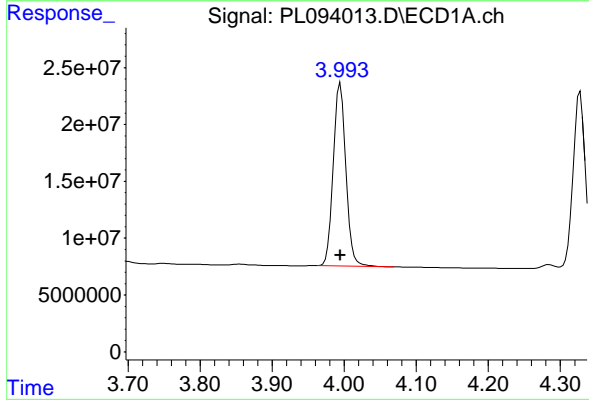
Manual Integrations
 APPROVED

Reviewed By :Abdul Mirza 02/04/2025
 Supervised By :Ankita Jodhani 02/04/2025



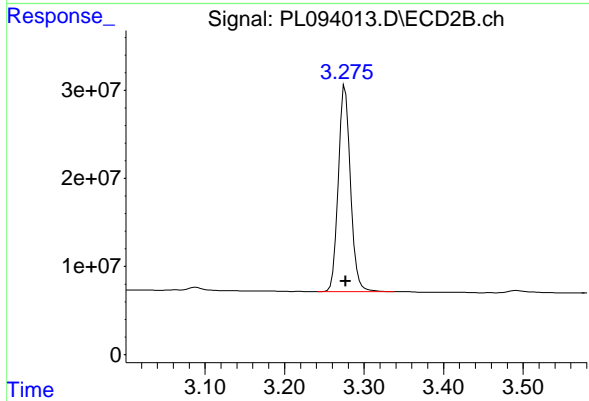
#1 Tetrachloro-m-xylene

R.T.: 2.774 min
 Delta R.T.: 0.000 min
 Response: 72900196
 Conc: 22.33 ng/ml



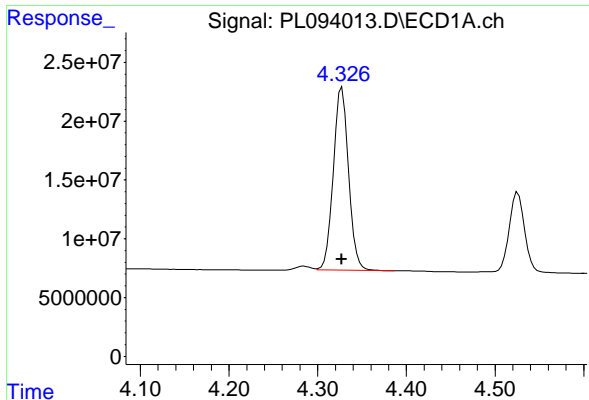
#2 alpha-BHC

R.T.: 3.995 min
 Delta R.T.: 0.000 min
 Response: 193413957
 Conc: 50.45 ng/ml



#2 alpha-BHC

R.T.: 3.276 min
 Delta R.T.: 0.000 min
 Response: 249724047
 Conc: 51.08 ng/ml



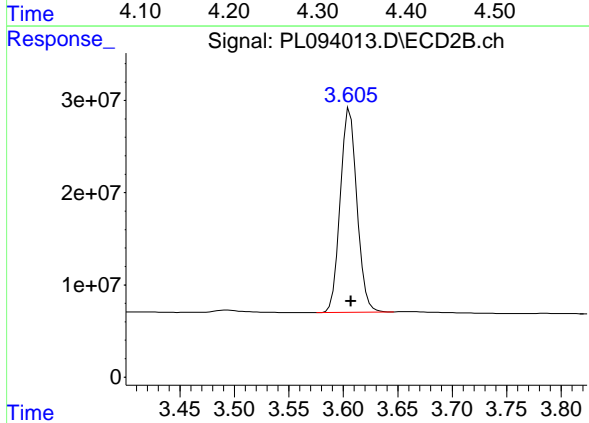
#3 gamma-BHC (Lindane)

R.T.: 4.326 min
 Delta R.T.: 0.000 min
 Response: 185105178
 Conc: 50.26 ng/ml

Instrument : ECD_L
 Client Sample Id : JPP-3.5-013025MS

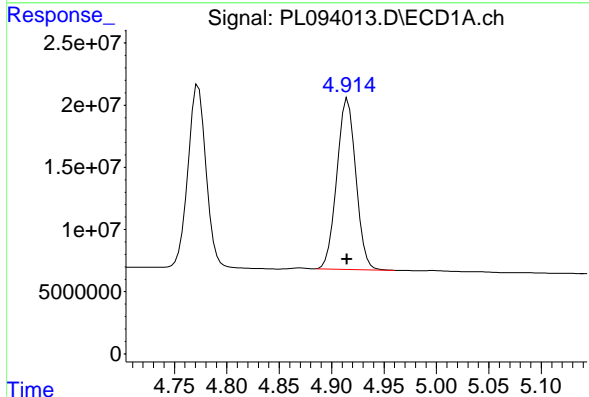
Manual Integrations
 APPROVED

Reviewed By :Abdul Mirza 02/04/2025
 Supervised By :Ankita Jodhani 02/04/2025



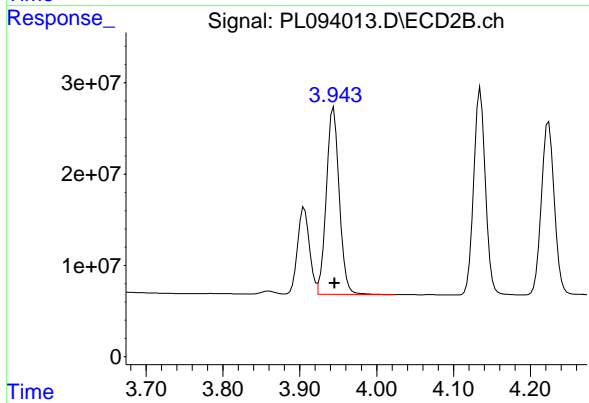
#3 gamma-BHC (Lindane)

R.T.: 3.606 min
 Delta R.T.: -0.001 min
 Response: 234745129
 Conc: 49.51 ng/ml



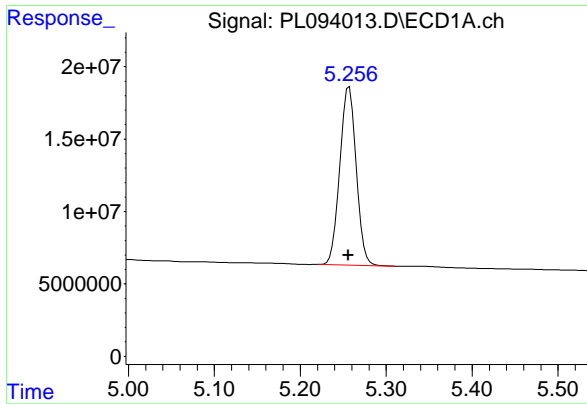
#4 Heptachlor

R.T.: 4.915 min
 Delta R.T.: 0.000 min
 Response: 173218907
 Conc: 52.85 ng/ml



#4 Heptachlor

R.T.: 3.944 min
 Delta R.T.: 0.000 min
 Response: 238616107
 Conc: 51.26 ng/ml



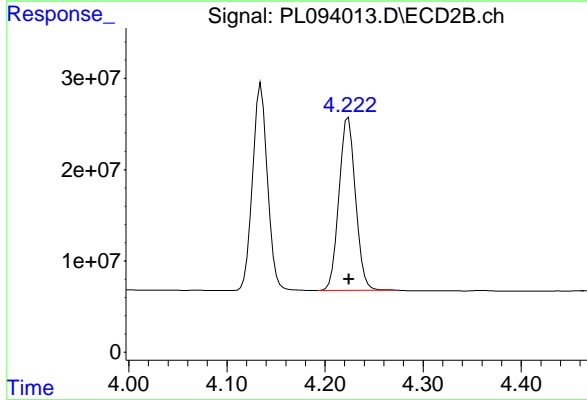
#5 Aldrin

R.T.: 5.257 min
 Delta R.T.: 0.001 min
 Response: 162767025
 Conc: 49.75 ng/ml

Instrument : ECD_L
 ClientSampleId : JPP-3.5-013025MS

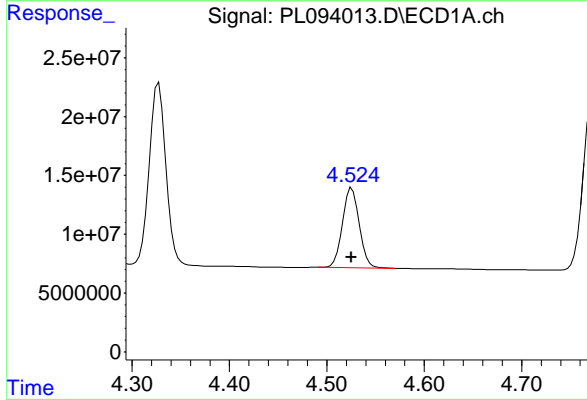
Manual Integrations
 APPROVED

Reviewed By :Abdul Mirza 02/04/2025
 Supervised By :Ankita Jodhani 02/04/2025



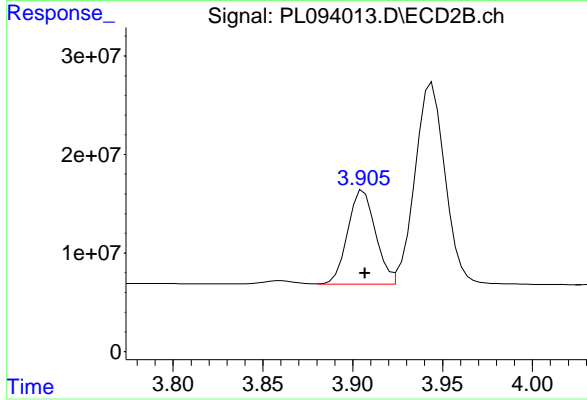
#5 Aldrin

R.T.: 4.224 min
 Delta R.T.: 0.000 min
 Response: 222010423
 Conc: 48.67 ng/ml



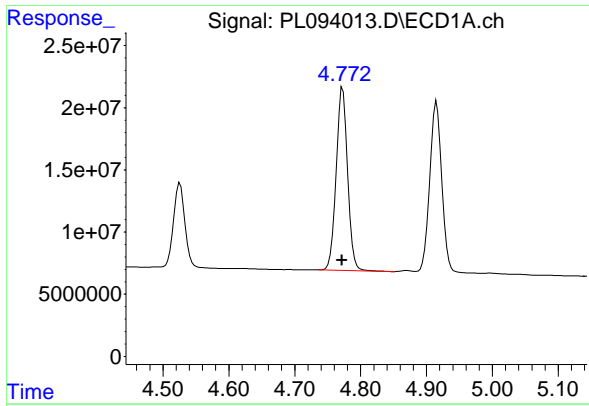
#6 beta-BHC

R.T.: 4.526 min
 Delta R.T.: 0.000 min
 Response: 81044226
 Conc: 50.42 ng/ml



#6 beta-BHC

R.T.: 3.906 min
 Delta R.T.: 0.000 min
 Response: 102167972
 Conc: 51.15 ng/ml



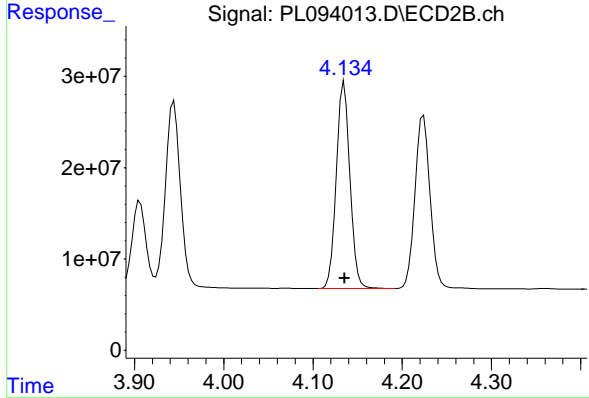
#7 delta-BHC

R.T.: 4.773 min
 Delta R.T.: 0.001 min
 Response: 178152872
 Conc: 50.82 ng/ml

Instrument : ECD_L
 Client Sample Id : JPP-3.5-013025MS

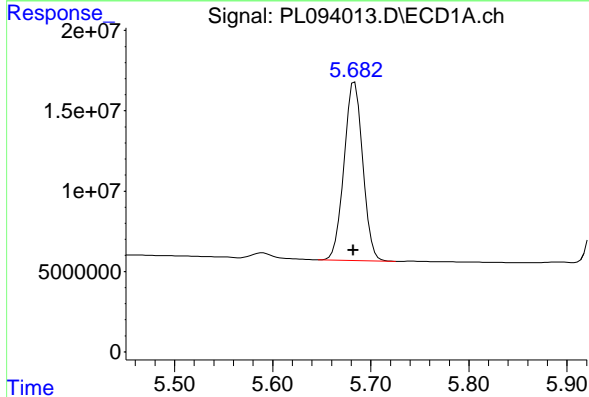
Manual Integrations
 APPROVED

Reviewed By :Abdul Mirza 02/04/2025
 Supervised By :Ankita Jodhani 02/04/2025



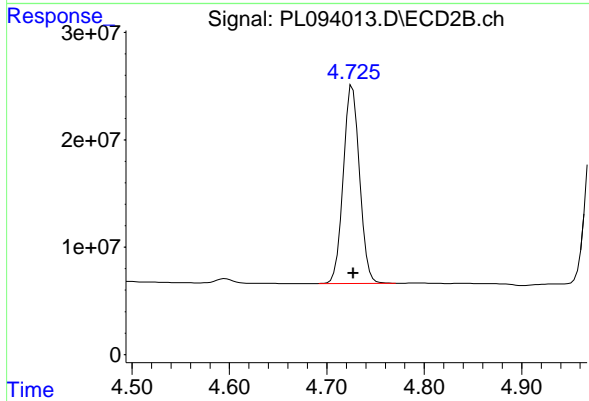
#7 delta-BHC

R.T.: 4.135 min
 Delta R.T.: 0.000 min
 Response: 240164433
 Conc: 50.55 ng/ml



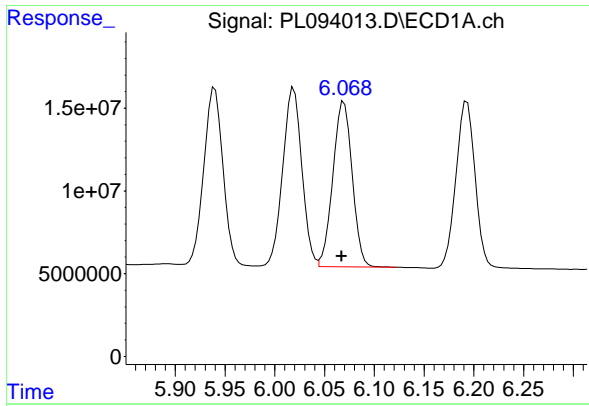
#8 Heptachlor epoxide

R.T.: 5.684 min
 Delta R.T.: 0.001 min
 Response: 147190983
 Conc: 49.50 ng/ml



#8 Heptachlor epoxide

R.T.: 4.726 min
 Delta R.T.: 0.000 min
 Response: 213481989
 Conc: 51.07 ng/ml



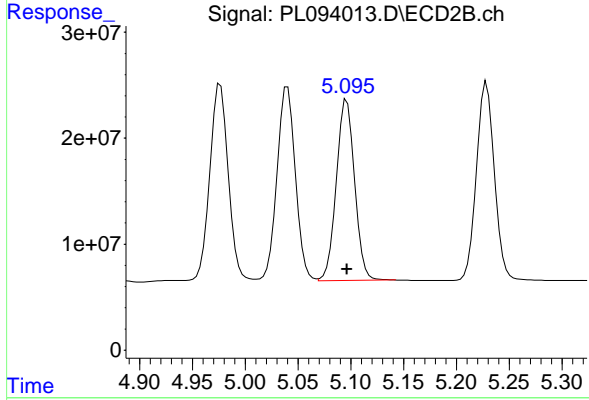
#9 Endosulfan I

R.T.: 6.069 min
 Delta R.T.: 0.002 min
 Response: 134828324
 Conc: 51.02 ng/ml

Instrument : ECD_L
 Client SampleId : JPP-3.5-013025MS

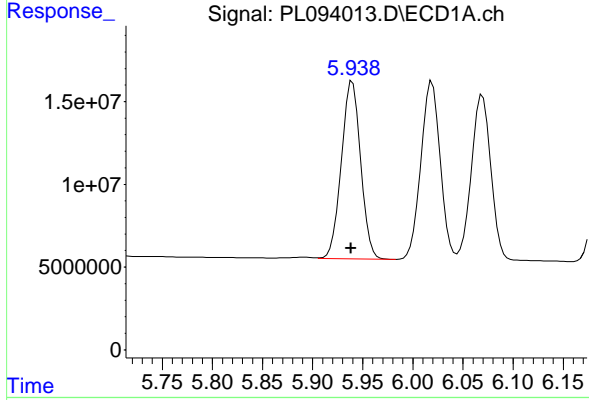
Manual Integrations
 APPROVED

Reviewed By :Abdul Mirza 02/04/2025
 Supervised By :Ankita Jodhani 02/04/2025



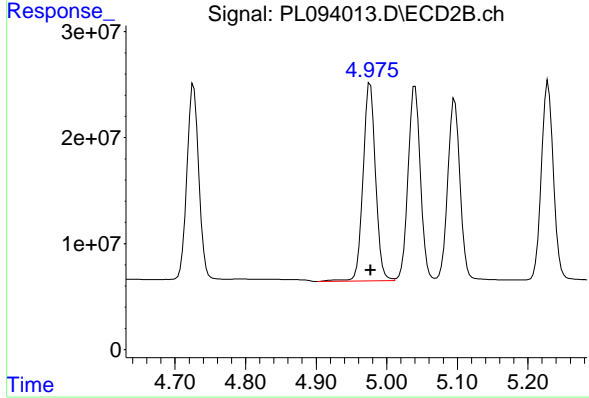
#9 Endosulfan I

R.T.: 5.096 min
 Delta R.T.: 0.000 min
 Response: 205554424
 Conc: 53.02 ng/ml



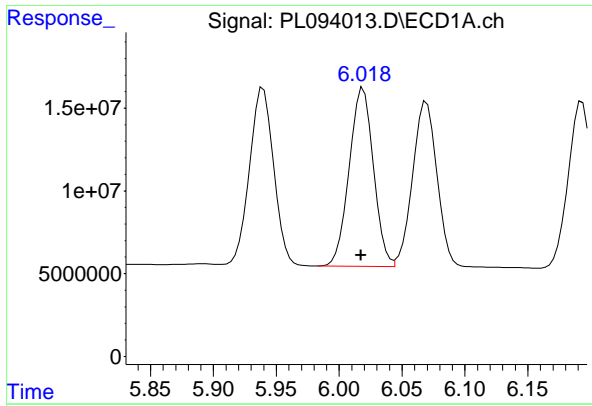
#10 gamma-Chlordane

R.T.: 5.940 min
 Delta R.T.: 0.001 min
 Response: 143894531
 Conc: 51.62 ng/ml



#10 gamma-Chlordane

R.T.: 4.976 min
 Delta R.T.: 0.000 min
 Response: 230397871
 Conc: 54.37 ng/ml



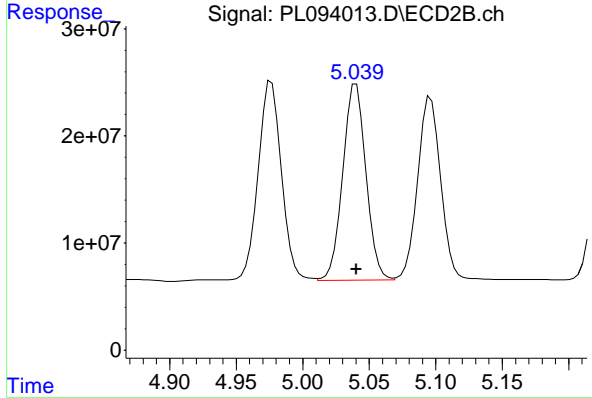
#11 alpha-Chlordane

R.T.: 6.019 min
 Delta R.T.: 0.002 min
 Response: 144449993
 Conc: 51.80 ng/ml

Instrument : ECD_L
 ClientSampleId : JPP-3.5-013025MS

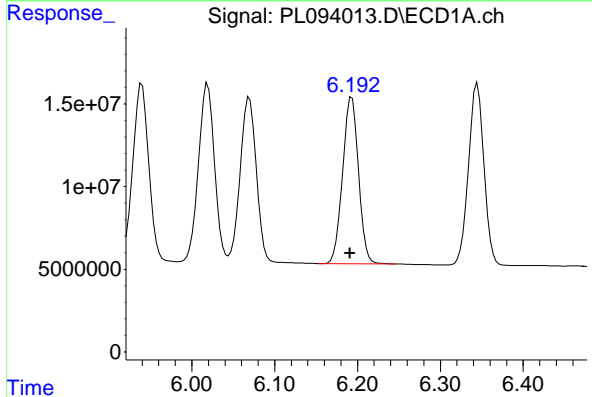
Manual Integrations
 APPROVED

Reviewed By :Abdul Mirza 02/04/2025
 Supervised By :Ankita Jodhani 02/04/2025



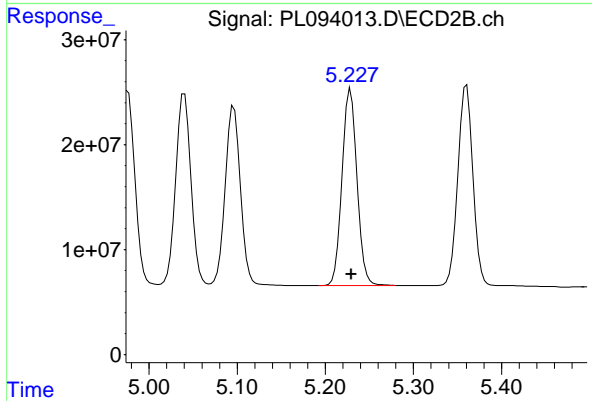
#11 alpha-Chlordane

R.T.: 5.040 min
 Delta R.T.: 0.000 min
 Response: 222553716
 Conc: 53.16 ng/ml



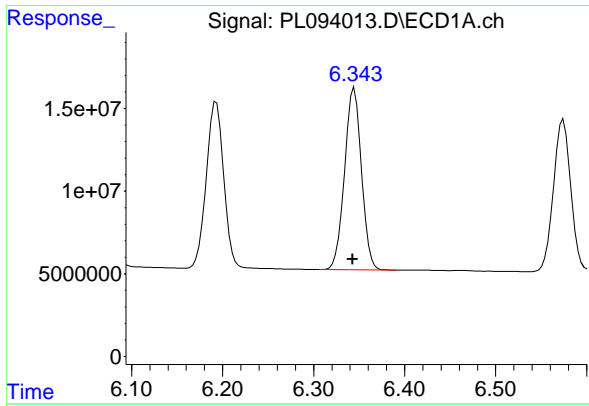
#12 4,4'-DDE

R.T.: 6.193 min
 Delta R.T.: 0.002 min
 Response: 134358930
 Conc: 55.19 ng/ml



#12 4,4'-DDE

R.T.: 5.229 min
 Delta R.T.: 0.000 min
 Response: 221351908
 Conc: 55.21 ng/ml



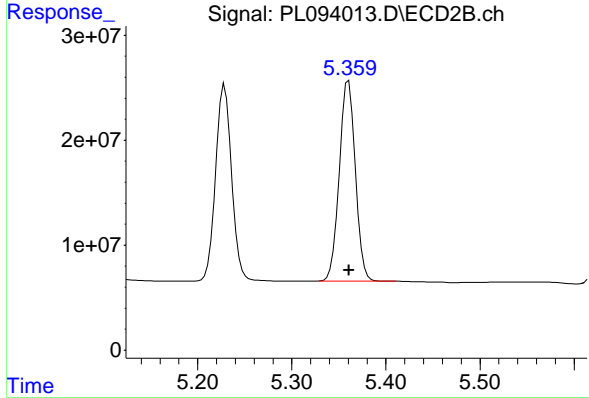
#13 Dieldrin

R.T.: 6.345 min
 Delta R.T.: 0.002 min
 Response: 142455505
 Conc: 51.32 ng/ml

Instrument : ECD_L
 Client Sample Id : JPP-3.5-013025MS

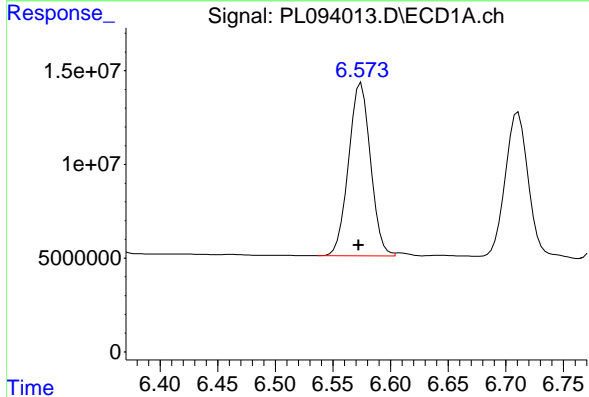
Manual Integrations
 APPROVED

Reviewed By :Abdul Mirza 02/04/2025
 Supervised By :Ankita Jodhani 02/04/2025



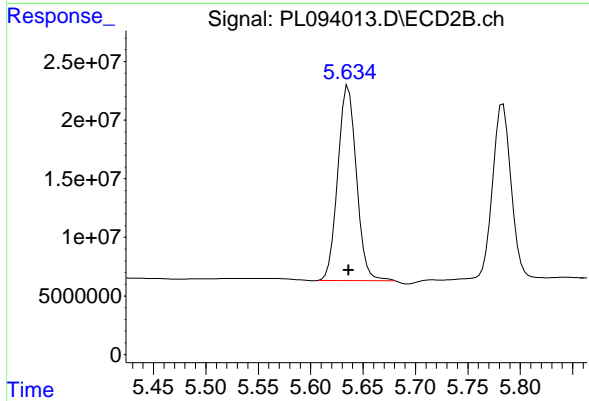
#13 Dieldrin

R.T.: 5.360 min
 Delta R.T.: 0.000 min
 Response: 226567919
 Conc: 52.74 ng/ml



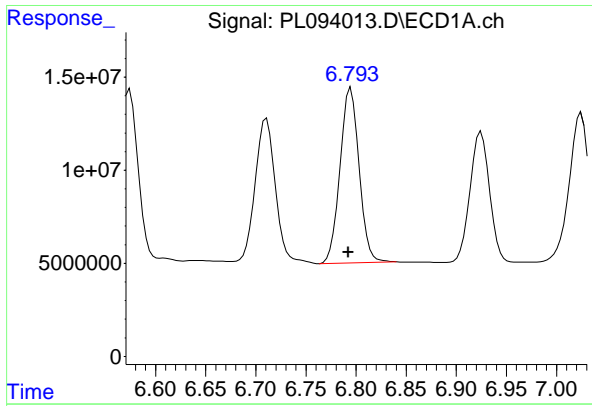
#14 Endrin

R.T.: 6.573 min
 Delta R.T.: 0.000 min
 Response: 122255827
 Conc: 52.14 ng/ml m



#14 Endrin

R.T.: 5.636 min
 Delta R.T.: 0.000 min
 Response: 206256901
 Conc: 55.86 ng/ml



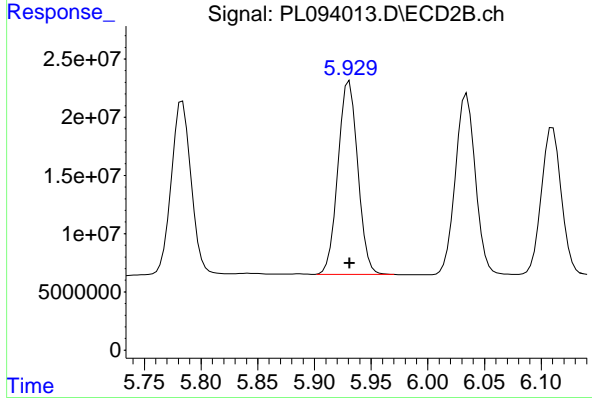
#15 Endosulfan II

R.T.: 6.795 min
 Delta R.T.: 0.003 min
 Response: 124073349
 Conc: 51.50 ng/ml

Instrument : ECD_L
 Client Sample Id : JPP-3.5-013025MS

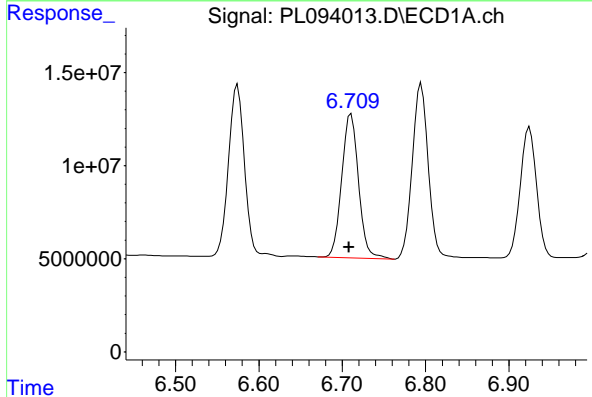
Manual Integrations
 APPROVED

Reviewed By :Abdul Mirza 02/04/2025
 Supervised By :Ankita Jodhani 02/04/2025



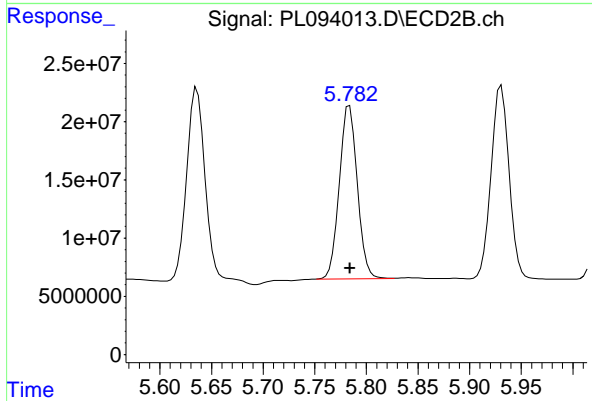
#15 Endosulfan II

R.T.: 5.931 min
 Delta R.T.: 0.000 min
 Response: 201493871
 Conc: 54.40 ng/ml



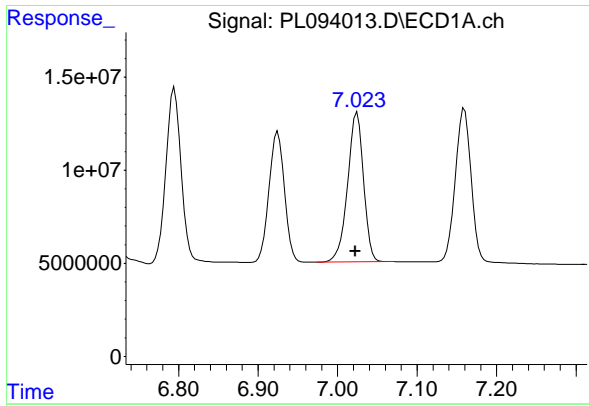
#16 4,4'-DDD

R.T.: 6.711 min
 Delta R.T.: 0.002 min
 Response: 107975600
 Conc: 56.81 ng/ml



#16 4,4'-DDD

R.T.: 5.784 min
 Delta R.T.: 0.000 min
 Response: 180535750
 Conc: 57.19 ng/ml



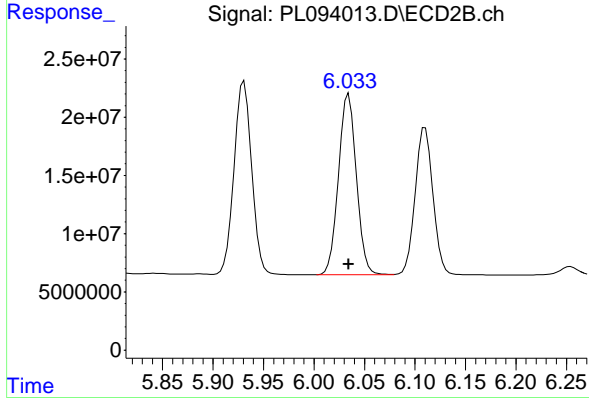
#17 4,4' -DDT

R.T.: 7.024 min
 Delta R.T.: 0.002 min
 Response: 111665373
 Conc: 56.62 ng/ml

Instrument : ECD_L
 Client Sample Id : JPP-3.5-013025MS

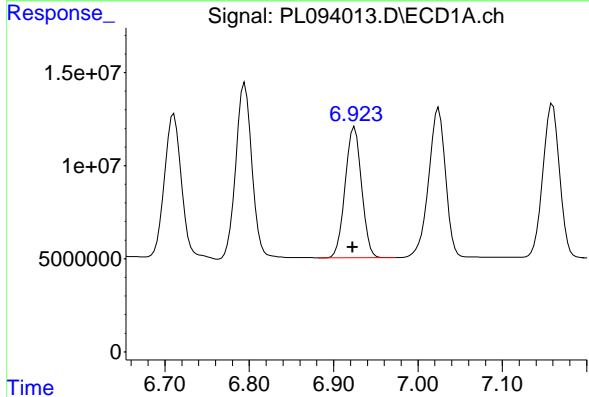
Manual Integrations
 APPROVED

Reviewed By :Abdul Mirza 02/04/2025
 Supervised By :Ankita Jodhani 02/04/2025



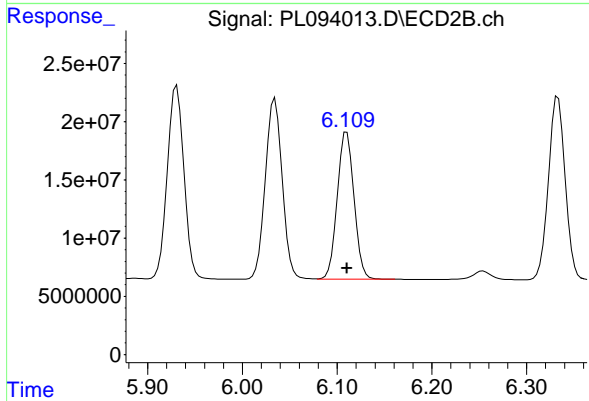
#17 4,4' -DDT

R.T.: 6.034 min
 Delta R.T.: 0.000 min
 Response: 192208218
 Conc: 59.07 ng/ml



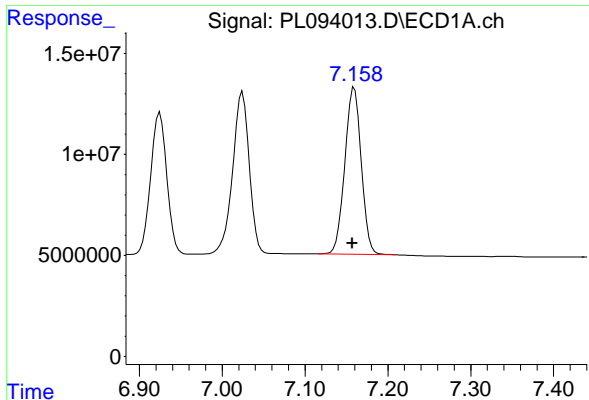
#18 Endrin aldehyde

R.T.: 6.925 min
 Delta R.T.: 0.002 min
 Response: 94982600
 Conc: 48.86 ng/ml



#18 Endrin aldehyde

R.T.: 6.110 min
 Delta R.T.: 0.000 min
 Response: 155011115
 Conc: 50.91 ng/ml



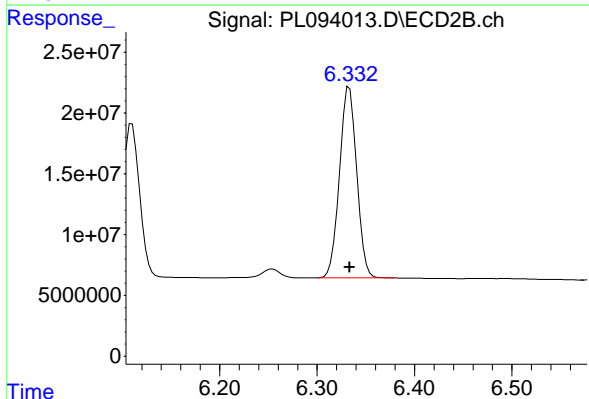
#19 Endosulfan Sulfate

R.T.: 7.159 min
 Delta R.T.: 0.002 min
 Response: 113964760
 Conc: 50.34 ng/ml

Instrument : ECD_L
 Client Sample Id : JPP-3.5-013025MS

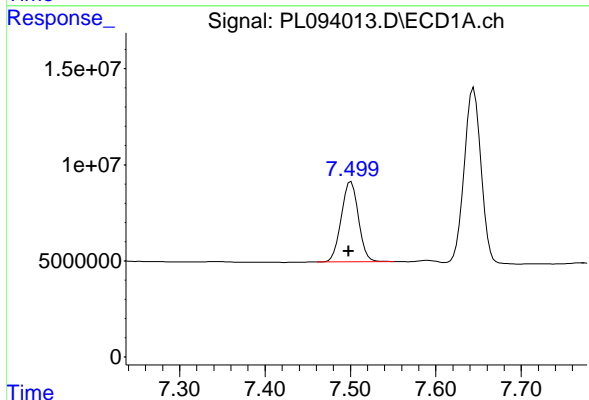
Manual Integrations
APPROVED

Reviewed By :Abdul Mirza 02/04/2025
 Supervised By :Ankita Jodhani 02/04/2025



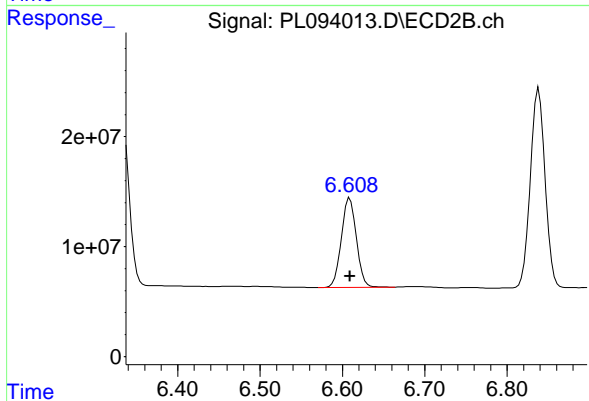
#19 Endosulfan Sulfate

R.T.: 6.333 min
 Delta R.T.: 0.000 min
 Response: 192985107
 Conc: 54.12 ng/ml



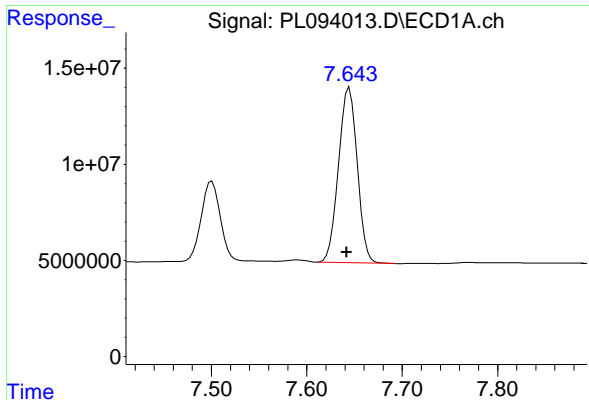
#20 Methoxychlor

R.T.: 7.501 min
 Delta R.T.: 0.003 min
 Response: 58283509
 Conc: 55.86 ng/ml



#20 Methoxychlor

R.T.: 6.609 min
 Delta R.T.: 0.000 min
 Response: 103085357
 Conc: 57.65 ng/ml



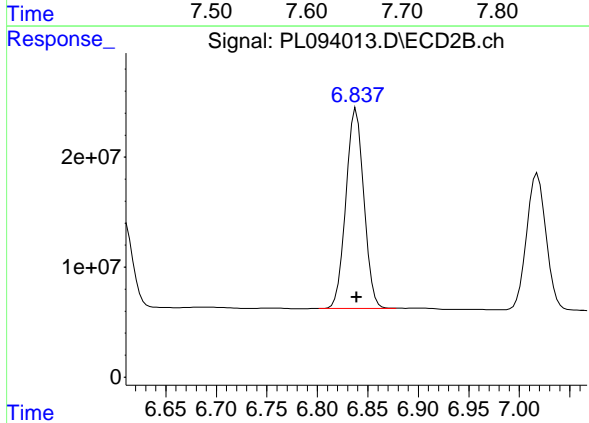
#21 Endrin ketone

R.T.: 7.644 min
 Delta R.T.: 0.003 min
 Response: 124488454
 Conc: 49.35 ng/ml

Instrument : ECD_L
 ClientSampleId : JPP-3.5-013025MS

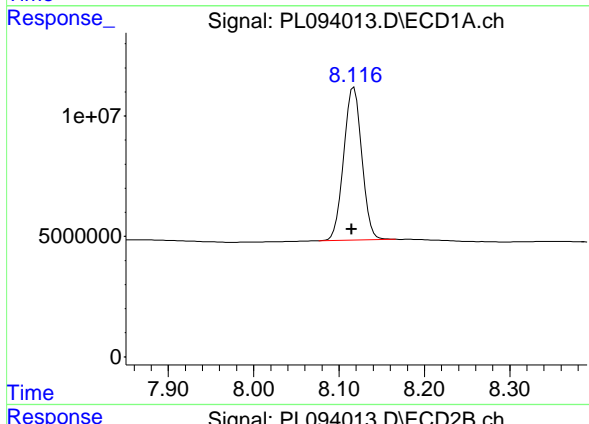
Manual Integrations
 APPROVED

Reviewed By :Abdul Mirza 02/04/2025
 Supervised By :Ankita Jodhani 02/04/2025



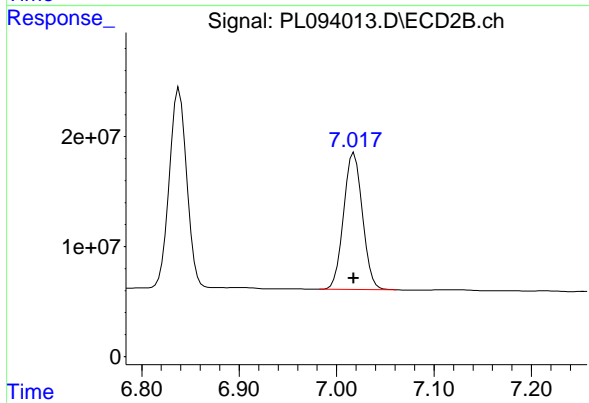
#21 Endrin ketone

R.T.: 6.838 min
 Delta R.T.: 0.000 min
 Response: 225128525
 Conc: 53.66 ng/ml



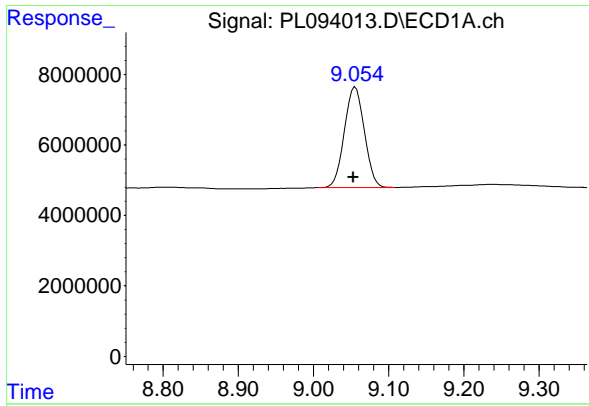
#22 Mirex

R.T.: 8.117 min
 Delta R.T.: 0.003 min
 Response: 93754803
 Conc: 45.02 ng/ml



#22 Mirex

R.T.: 7.018 min
 Delta R.T.: 0.000 min
 Response: 166581771
 Conc: 49.26 ng/ml



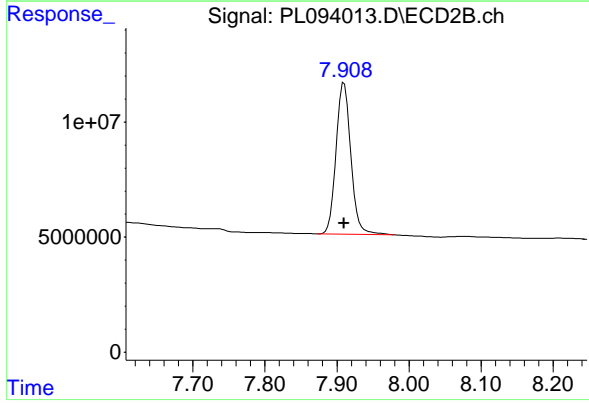
#28 Decachlorobiphenyl

R.T.: 9.056 min
 Delta R.T.: 0.003 min
 Response: 52717126
 Conc: 25.20 ng/ml

Instrument : ECD_L
 ClientSampleId : JPP-3.5-013025MS

Manual Integrations
 APPROVED

Reviewed By :Abdul Mirza 02/04/2025
 Supervised By :Ankita Jodhani 02/04/2025



#28 Decachlorobiphenyl

R.T.: 7.910 min
 Delta R.T.: 0.000 min
 Response: 93293086
 Conc: 26.62 ng/ml