

Data Path : Z:\pestpcbsrv\HPCHEM1\ECD_L\Data\PL020325\
 Data File : PL094014.D
 Signal(s) : Signal #1: ECD1A.ch Signal #2: ECD2B.ch
 Acq On : 03 Feb 2025 20:42
 Operator : AR\AJ
 Sample : Q1241-04MSD
 Misc :
 ALS Vial : 33 Sample Multiplier: 1

Instrument :
 ECD_L
ClientSampleId :
 JPP-3.5-013025MSD

Manual Integrations
APPROVED

Reviewed By :Abdul Mirza 02/04/2025
 Supervised By :Ankita Jodhani 02/04/2025

Integration File signal 1: autoint1.e
 Integration File signal 2: autoint2.e
 Quant Time: Feb 04 00:50:58 2025
 Quant Method : Z:\pestpcbsrv\HPCHEM1\ECD_L\methods\PL012125.M
 Quant Title : GC Extractables
 QLast Update : Tue Jan 21 14:58:05 2025
 Response via : Initial Calibration
 Integrator: ChemStation

Volume Inj. : 1 µl
 Signal #1 Phase : ZB-MR2 Signal #2 Phase: ZB-MR2
 Signal #1 Info : 30M x 0.32mm x0.5 Signal #2 Info : 30M x 0.32mm x0.25µm

Compound	RT#1	RT#2	Resp#1	Resp#2	ng/ml	ng/ml

System Monitoring Compounds						
1) SA Tetrachlo...	3.538	2.774	62325458	73024606	23.146	22.372
28) SA Decachlor...	9.055	7.910	52595184	93558983	25.142	26.700
Target Compounds						
2) A alpha-BHC	3.994	3.276	194.3E6	251.0E6	50.673	51.334
3) MA gamma-BHC...	4.325	3.606	186.5E6	237.0E6	50.639m	49.981
4) MA Heptachlor	4.914	3.945	173.5E6	240.7E6	52.930	51.701
5) MB Aldrin	5.256	4.224	162.4E6	223.9E6	49.648	49.087
6) B beta-BHC	4.524	3.906	81880727	103.0E6	50.942	51.552
7) B delta-BHC	4.772	4.135	179.6E6	241.2E6	51.228	50.774
8) B Heptachlo...	5.683	4.726	148.0E6	214.7E6	49.762	51.351
9) A Endosulfan I	6.069	5.096	135.2E6	206.7E6	51.164	53.319
10) B gamma-Chl...	5.939	4.976	144.6E6	231.7E6	51.877	54.679
11) B alpha-Chl...	6.018	5.040	145.3E6	224.1E6	52.111	53.527
12) B 4,4'-DDE	6.192	5.229	135.9E6	222.6E6	55.834	55.527
13) MA Dieldrin	6.344	5.361	143.0E6	228.2E6	51.506	53.122
14) MA Endrin	6.572	5.636	121.8E6	206.5E6	51.966m	55.927
15) B Endosulfa...	6.794	5.931	124.6E6	202.7E6	51.719	54.729
16) A 4,4'-DDD	6.710	5.784	108.5E6	182.3E6	57.070	57.753
17) MA 4,4'-DDT	7.023	6.034	111.9E6	193.3E6	56.765	59.406
18) B Endrin al...	6.924	6.110	94844306	155.7E6	48.787	51.147
19) B Endosulfa...	7.158	6.333	113.9E6	194.1E6	50.303	54.436
20) A Methoxychlor	7.499	6.609	58322404	103.7E6	55.897	57.969
21) B Endrin ke...	7.644	6.838	123.8E6	226.2E6	49.093	53.928
22) Mirex	8.116	7.018	93785056	167.8E6	45.035	49.621

(f)=RT Delta > 1/2 Window (#)=Amounts differ by > 25% (m)=manual int.

Data Path : Z:\pestpcbsrv\HPCHEM1\ECD_L\Data\PL020325\
 Data File : PL094014.D
 Signal(s) : Signal #1: ECD1A.ch Signal #2: ECD2B.ch
 Acq On : 03 Feb 2025 20:42
 Operator : AR\AJ
 Sample : Q1241-04MSD
 Misc :
 ALS Vial : 33 Sample Multiplier: 1

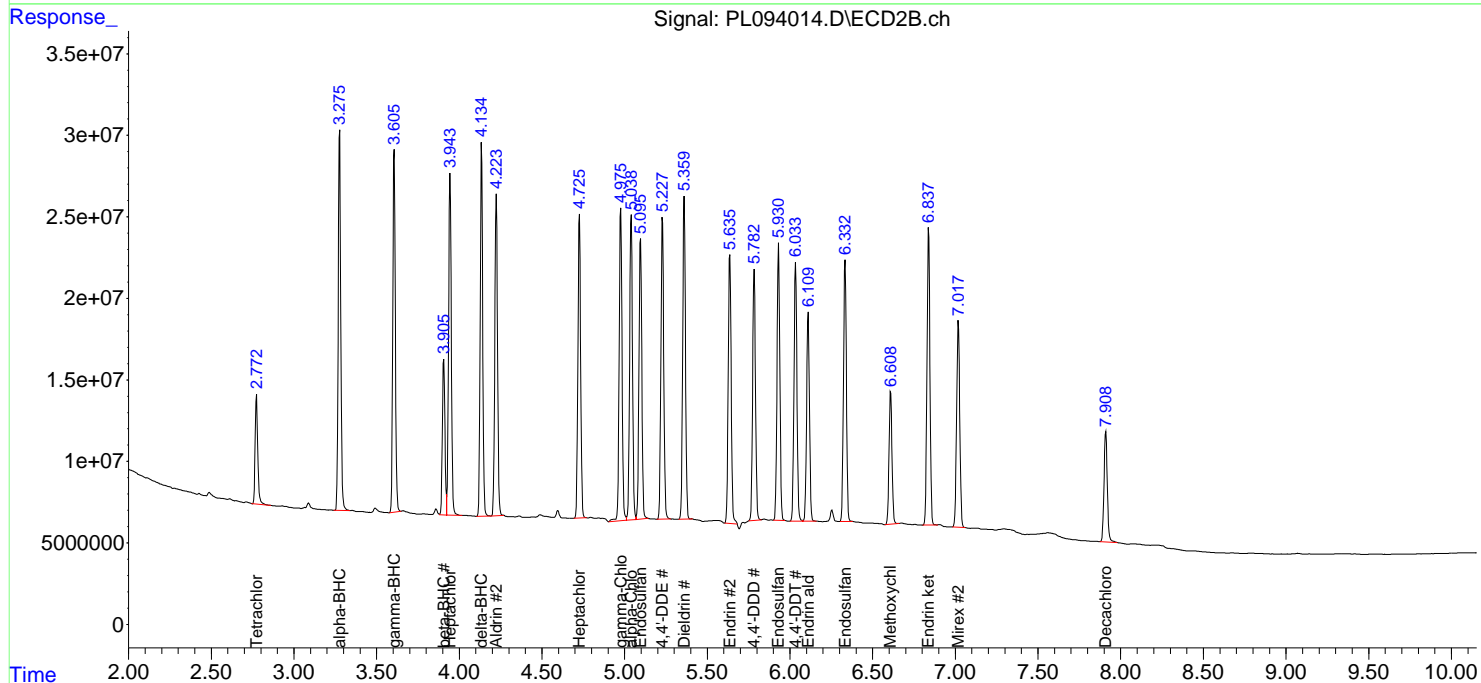
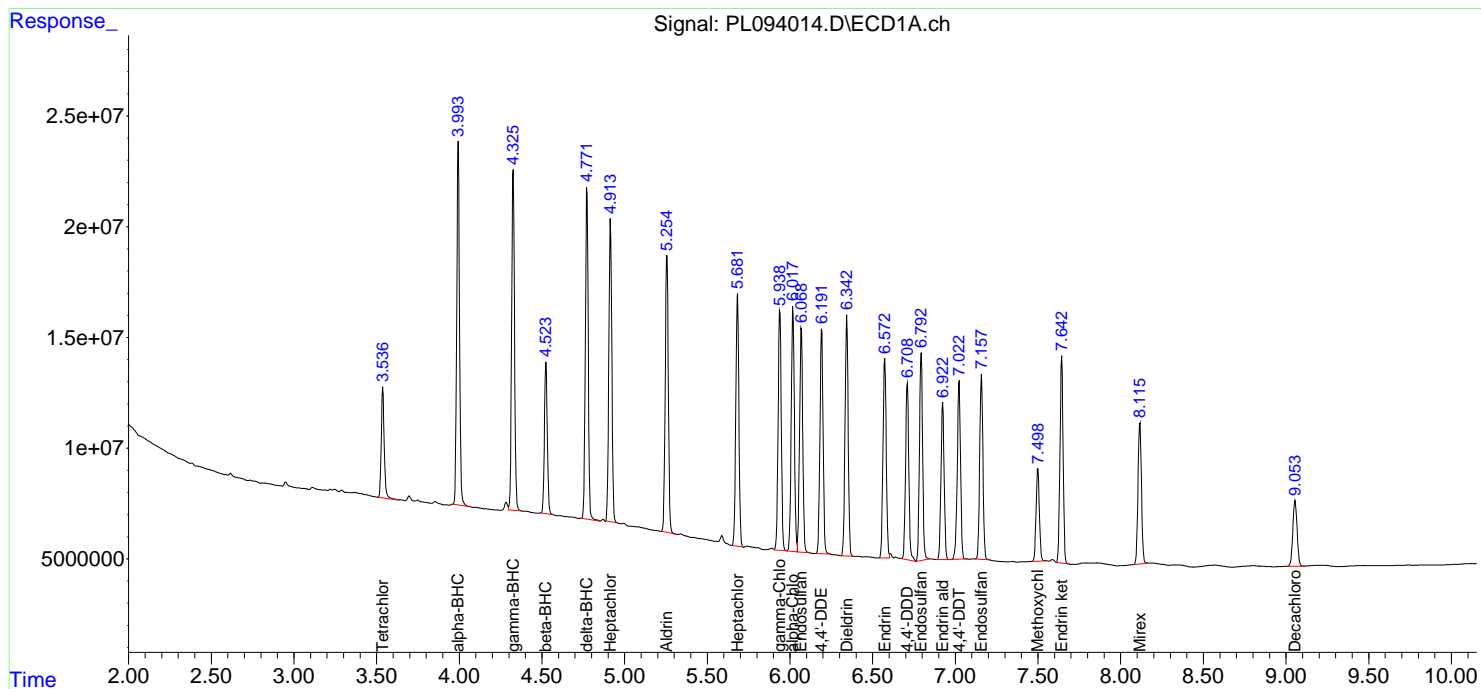
Instrument :
 ECD_L
 ClientSampleId :
 JPP-3.5-013025MSD

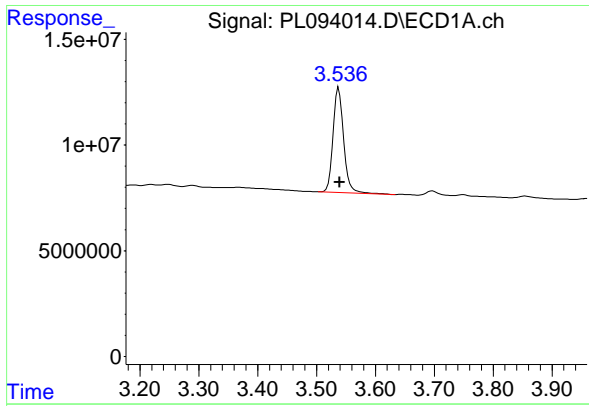
Manual Integrations
 APPROVED

Reviewed By :Abdul Mirza 02/04/2025
 Supervised By :Ankita Jodhani 02/04/2025

Integration File signal 1: autoint1.e
 Integration File signal 2: autoint2.e
 Quant Time: Feb 04 00:50:58 2025
 Quant Method : Z:\pestpcbsrv\HPCHEM1\ECD_L\methods\PL012125.M
 Quant Title : GC Extractables
 QLast Update : Tue Jan 21 14:58:05 2025
 Response via : Initial Calibration
 Integrator: ChemStation

Volume Inj. : 1 µl
 Signal #1 Phase : ZB-MR1 Signal #2 Phase: ZB-MR2
 Signal #1 Info : 30M x 0.32mm x0.5 Signal #2 Info : 30M x 0.32mm x0.25µm





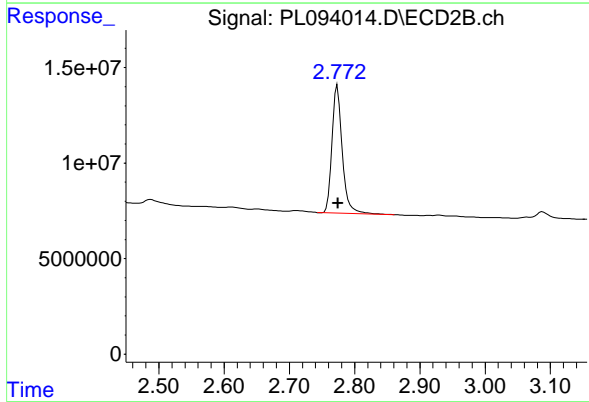
#1 Tetrachloro-m-xylene

R.T.: 3.538 min
 Delta R.T.: -0.001 min
 Response: 62325458
 Conc: 23.15 ng/ml

Instrument : ECD_L
 Client Sample Id : JPP-3.5-013025MSD

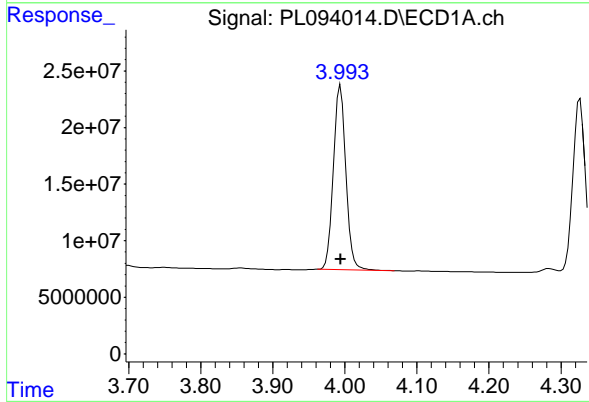
Manual Integrations
 APPROVED

Reviewed By :Abdul Mirza 02/04/2025
 Supervised By :Ankita Jodhani 02/04/2025



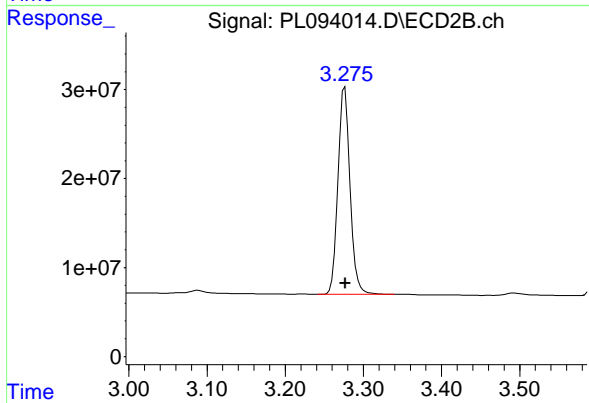
#1 Tetrachloro-m-xylene

R.T.: 2.774 min
 Delta R.T.: 0.000 min
 Response: 73024606
 Conc: 22.37 ng/ml



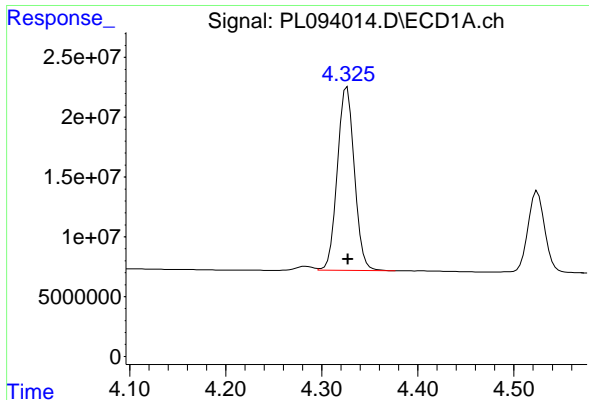
#2 alpha-BHC

R.T.: 3.994 min
 Delta R.T.: 0.000 min
 Response: 194270971
 Conc: 50.67 ng/ml



#2 alpha-BHC

R.T.: 3.276 min
 Delta R.T.: 0.000 min
 Response: 250971466
 Conc: 51.33 ng/ml



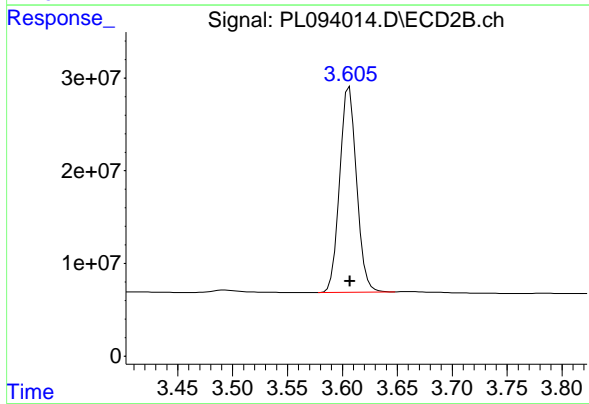
#3 gamma-BHC (Lindane)

R.T.: 4.325 min
 Delta R.T.: -0.002 min
 Response: 186494848
 Conc: 50.64 ng/ml

Instrument :
 ECD_L
 ClientSampleId :
 JPP-3.5-013025MSD

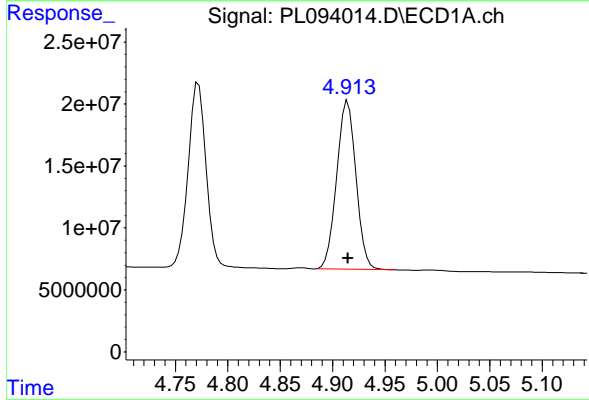
Manual Integrations
 APPROVED

Reviewed By :Abdul Mirza 02/04/2025
 Supervised By :Ankita Jodhani 02/04/2025



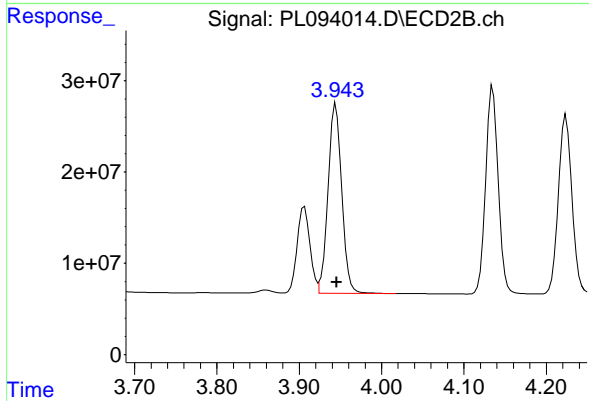
#3 gamma-BHC (Lindane)

R.T.: 3.606 min
 Delta R.T.: 0.000 min
 Response: 236972578
 Conc: 49.98 ng/ml



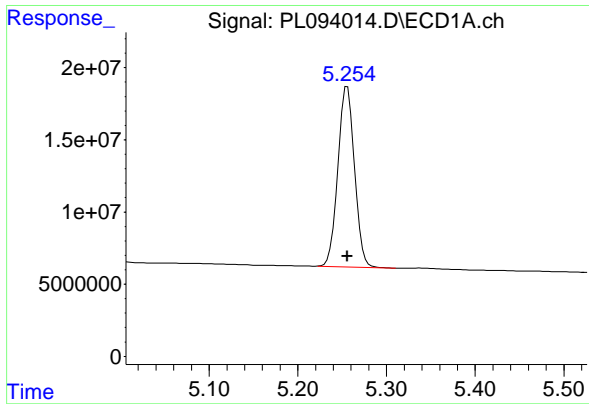
#4 Heptachlor

R.T.: 4.914 min
 Delta R.T.: 0.000 min
 Response: 173469519
 Conc: 52.93 ng/ml



#4 Heptachlor

R.T.: 3.945 min
 Delta R.T.: 0.000 min
 Response: 240655522
 Conc: 51.70 ng/ml



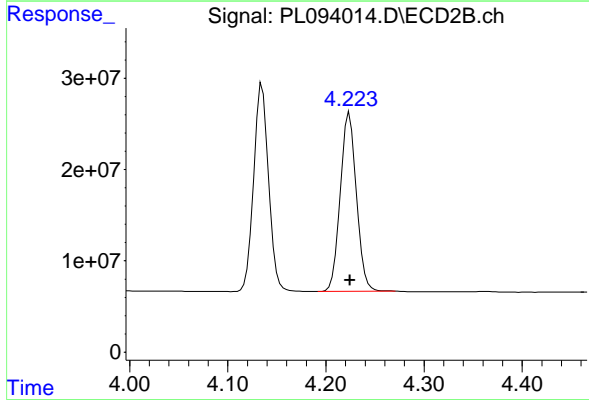
#5 Aldrin

R.T.: 5.256 min
 Delta R.T.: 0.000 min
 Response: 162445035
 Conc: 49.65 ng/ml

Instrument : ECD_L
 ClientSampleId : JPP-3.5-013025MSD

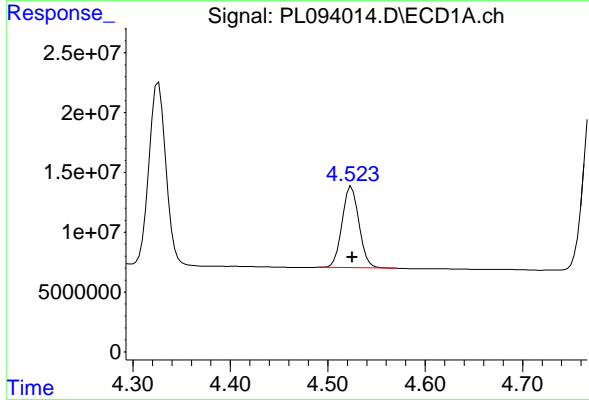
Manual Integrations
 APPROVED

Reviewed By :Abdul Mirza 02/04/2025
 Supervised By :Ankita Jodhani 02/04/2025



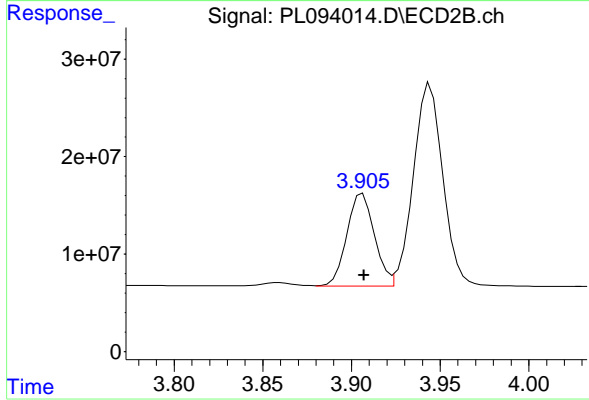
#5 Aldrin

R.T.: 4.224 min
 Delta R.T.: 0.000 min
 Response: 223923419
 Conc: 49.09 ng/ml



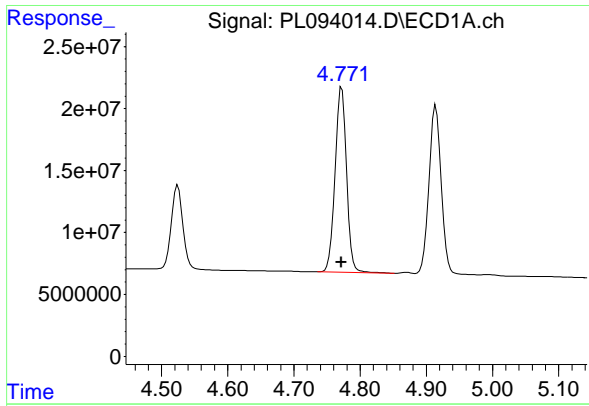
#6 beta-BHC

R.T.: 4.524 min
 Delta R.T.: 0.000 min
 Response: 81880727
 Conc: 50.94 ng/ml



#6 beta-BHC

R.T.: 3.906 min
 Delta R.T.: 0.000 min
 Response: 102972790
 Conc: 51.55 ng/ml



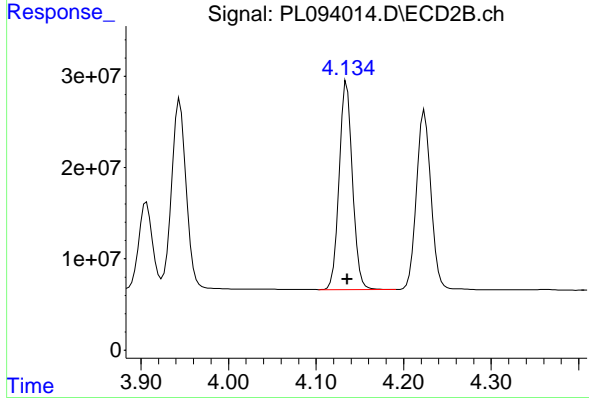
#7 delta-BHC

R.T.: 4.772 min
 Delta R.T.: 0.000 min
 Response: 179570559
 Conc: 51.23 ng/ml

Instrument : ECD_L
 Client Sample Id : JPP-3.5-013025MSD

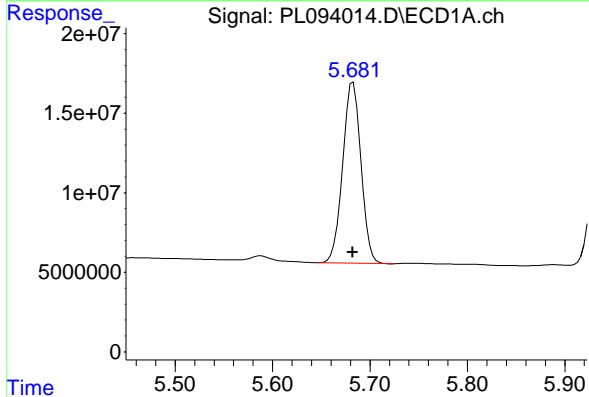
Manual Integrations
 APPROVED

Reviewed By :Abdul Mirza 02/04/2025
 Supervised By :Ankita Jodhani 02/04/2025



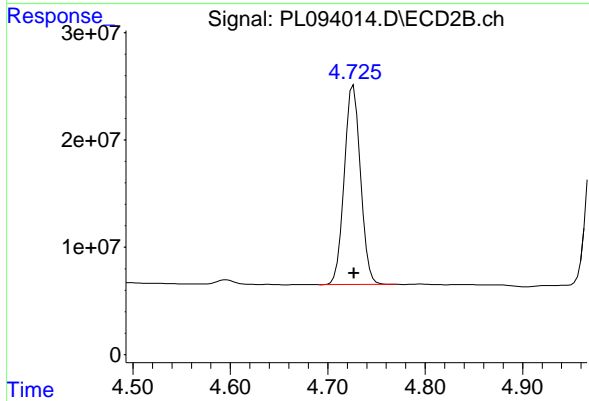
#7 delta-BHC

R.T.: 4.135 min
 Delta R.T.: 0.000 min
 Response: 241237369
 Conc: 50.77 ng/ml



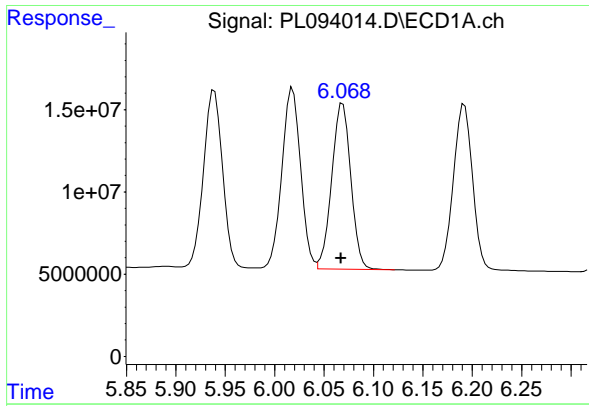
#8 Heptachlor epoxide

R.T.: 5.683 min
 Delta R.T.: 0.000 min
 Response: 147983858
 Conc: 49.76 ng/ml



#8 Heptachlor epoxide

R.T.: 4.726 min
 Delta R.T.: 0.000 min
 Response: 214661310
 Conc: 51.35 ng/ml



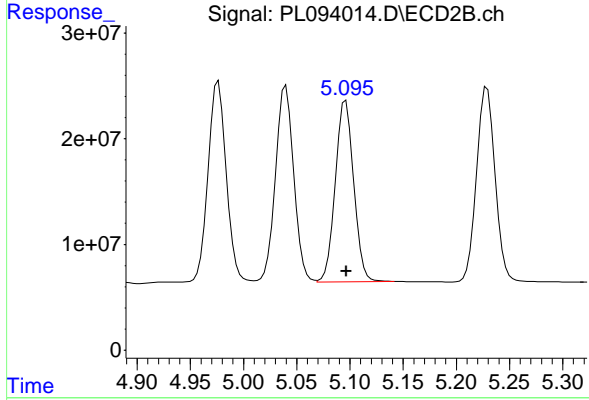
#9 Endosulfan I

R.T.: 6.069 min
 Delta R.T.: 0.002 min
 Response: 135219354
 Conc: 51.16 ng/ml

Instrument : ECD_L
 Client Sample Id : JPP-3.5-013025MSD

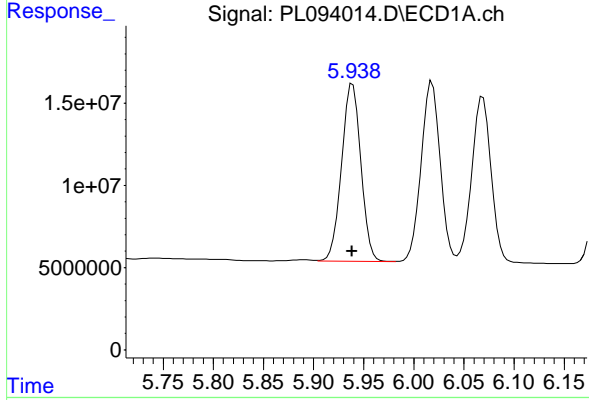
Manual Integrations
 APPROVED

Reviewed By :Abdul Mirza 02/04/2025
 Supervised By :Ankita Jodhani 02/04/2025



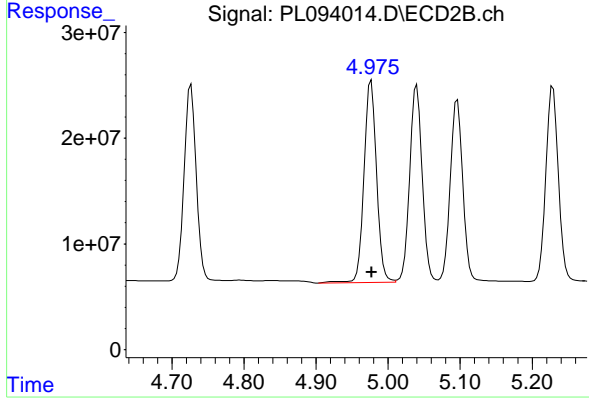
#9 Endosulfan I

R.T.: 5.096 min
 Delta R.T.: 0.000 min
 Response: 206711626
 Conc: 53.32 ng/ml



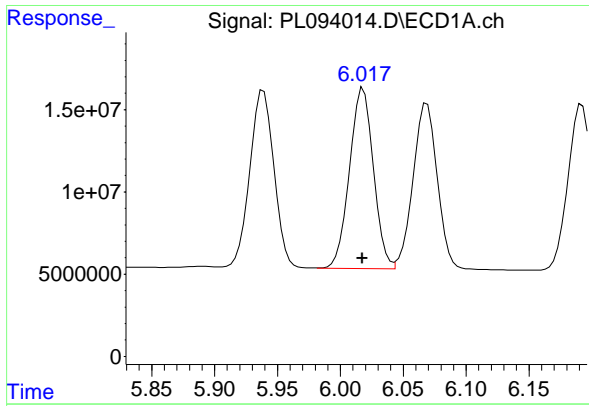
#10 gamma-Chlordane

R.T.: 5.939 min
 Delta R.T.: 0.000 min
 Response: 144601577
 Conc: 51.88 ng/ml



#10 gamma-Chlordane

R.T.: 4.976 min
 Delta R.T.: 0.000 min
 Response: 231710990
 Conc: 54.68 ng/ml



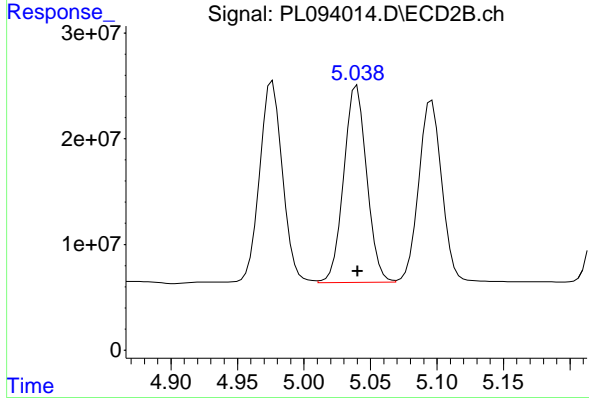
#11 alpha-Chlordane

R.T.: 6.018 min
 Delta R.T.: 0.000 min
 Response: 145305629
 Conc: 52.11 ng/ml

Instrument : ECD_L
 ClientSampleId : JPP-3.5-013025MSD

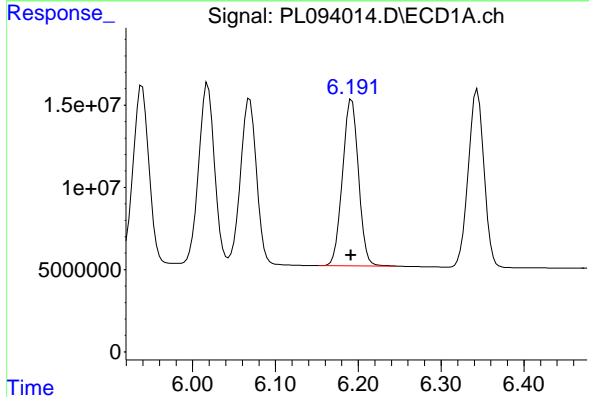
Manual Integrations
 APPROVED

Reviewed By :Abdul Mirza 02/04/2025
 Supervised By :Ankita Jodhani 02/04/2025



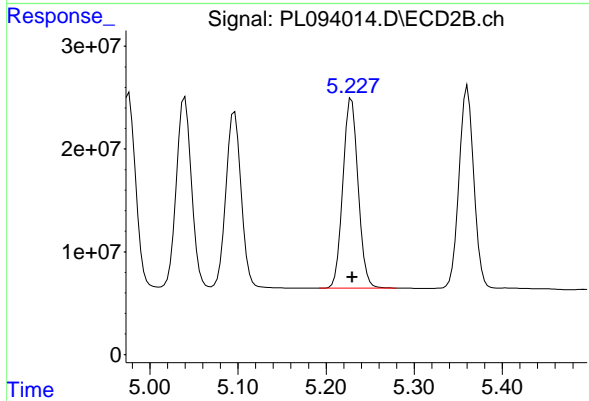
#11 alpha-Chlordane

R.T.: 5.040 min
 Delta R.T.: 0.000 min
 Response: 224094247
 Conc: 53.53 ng/ml



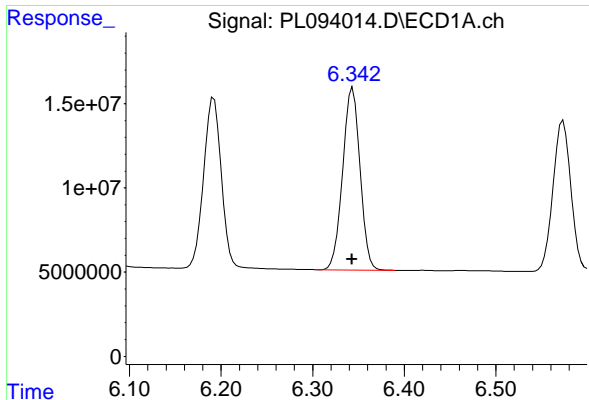
#12 4,4'-DDE

R.T.: 6.192 min
 Delta R.T.: 0.000 min
 Response: 135932755
 Conc: 55.83 ng/ml



#12 4,4'-DDE

R.T.: 5.229 min
 Delta R.T.: 0.000 min
 Response: 222632510
 Conc: 55.53 ng/ml



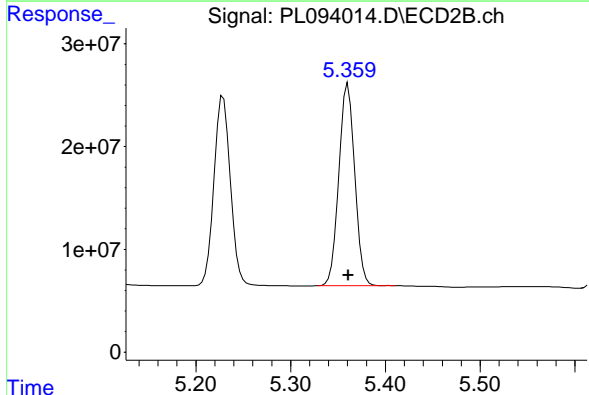
#13 Dieldrin

R.T.: 6.344 min
 Delta R.T.: 0.000 min
 Response: 142973617
 Conc: 51.51 ng/ml

Instrument : ECD_L
 Client Sample Id : JPP-3.5-013025MSD

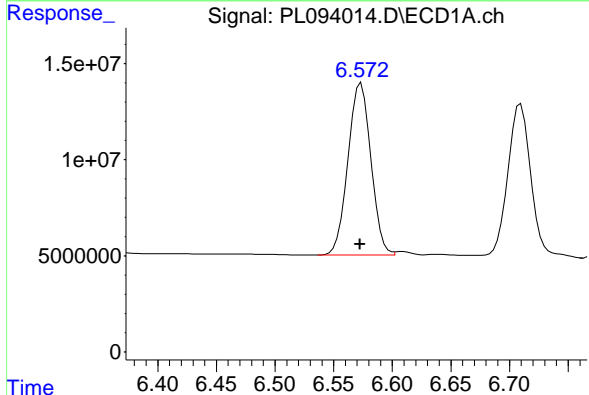
Manual Integrations
 APPROVED

Reviewed By :Abdul Mirza 02/04/2025
 Supervised By :Ankita Jodhani 02/04/2025



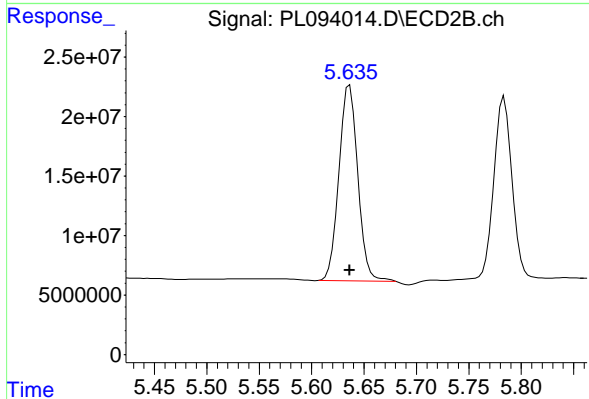
#13 Dieldrin

R.T.: 5.361 min
 Delta R.T.: 0.000 min
 Response: 228193154
 Conc: 53.12 ng/ml



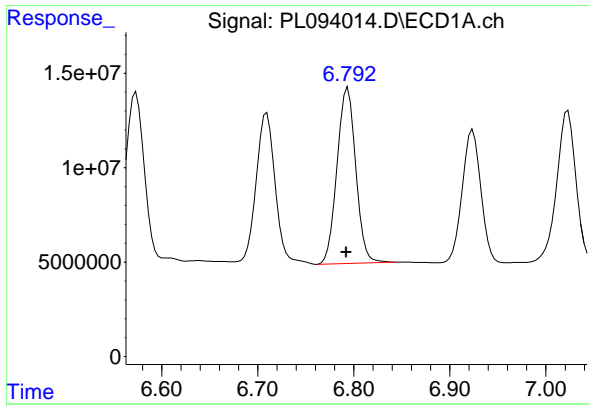
#14 Endrin

R.T.: 6.572 min
 Delta R.T.: 0.000 min
 Response: 121849878
 Conc: 51.97 ng/ml m



#14 Endrin

R.T.: 5.636 min
 Delta R.T.: 0.000 min
 Response: 206520958
 Conc: 55.93 ng/ml



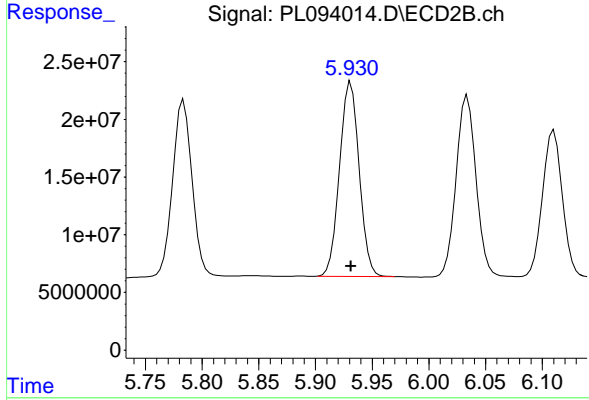
#15 Endosulfan II

R.T.: 6.794 min
 Delta R.T.: 0.002 min
 Response: 124609307
 Conc: 51.72 ng/ml

Instrument :
 ECD_L
 Client Sample Id :
 JPP-3.5-013025MSD

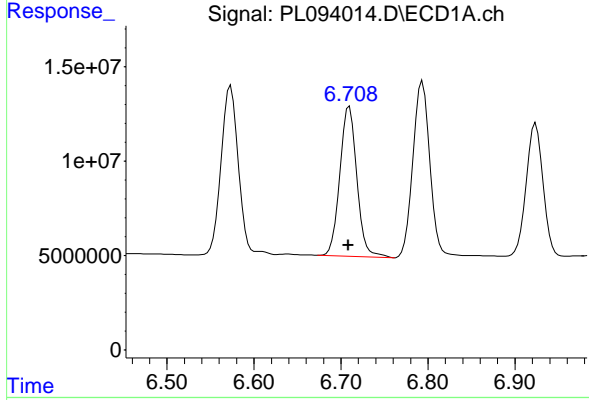
Manual Integrations
 APPROVED

Reviewed By :Abdul Mirza 02/04/2025
 Supervised By :Ankita Jodhani 02/04/2025



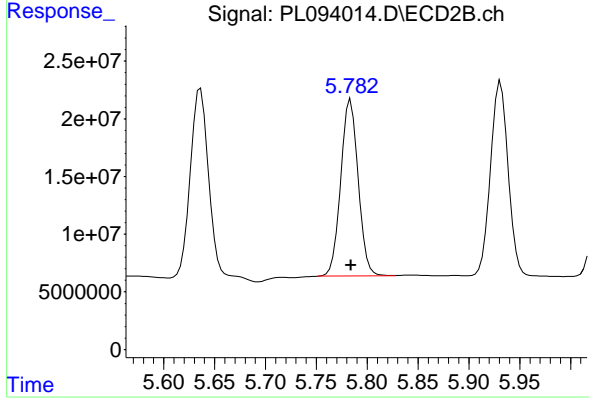
#15 Endosulfan II

R.T.: 5.931 min
 Delta R.T.: 0.000 min
 Response: 202706418
 Conc: 54.73 ng/ml



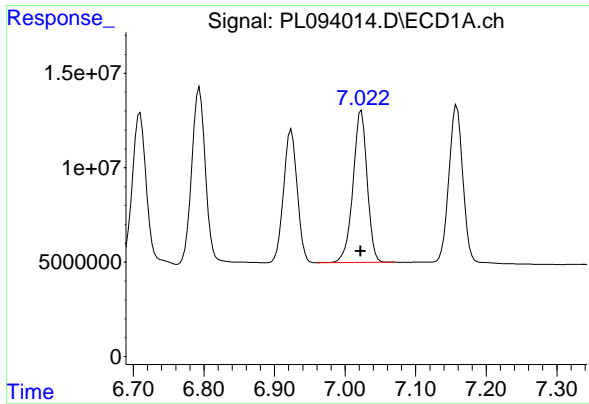
#16 4,4'-DDD

R.T.: 6.710 min
 Delta R.T.: 0.001 min
 Response: 108465780
 Conc: 57.07 ng/ml



#16 4,4'-DDD

R.T.: 5.784 min
 Delta R.T.: 0.000 min
 Response: 182298451
 Conc: 57.75 ng/ml



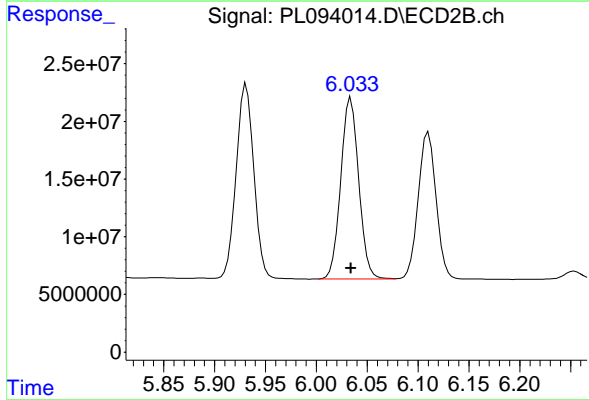
#17 4,4' -DDT

R.T.: 7.023 min
 Delta R.T.: 0.000 min
 Response: 111942858
 Conc: 56.76 ng/ml

Instrument :
 ECD_L
 Client Sample Id :
 JPP-3.5-013025MSD

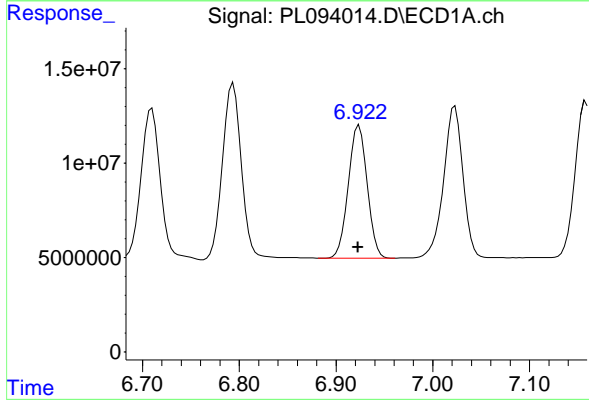
Manual Integrations
 APPROVED

Reviewed By :Abdul Mirza 02/04/2025
 Supervised By :Ankita Jodhani 02/04/2025



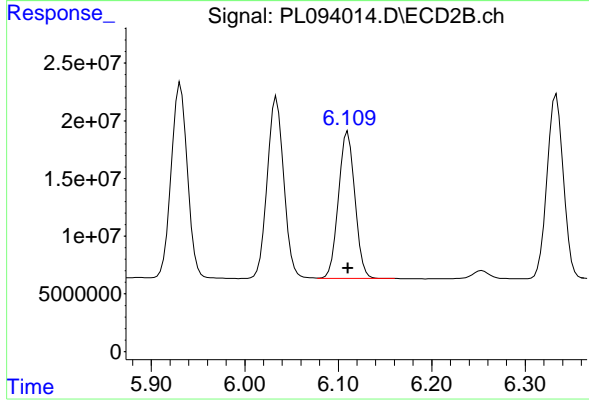
#17 4,4' -DDT

R.T.: 6.034 min
 Delta R.T.: 0.000 min
 Response: 193308745
 Conc: 59.41 ng/ml



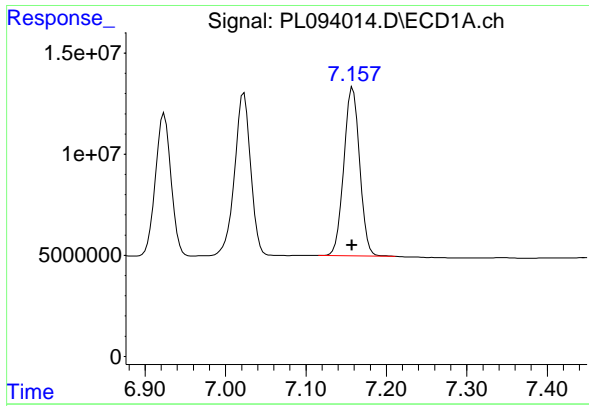
#18 Endrin aldehyde

R.T.: 6.924 min
 Delta R.T.: 0.001 min
 Response: 94844306
 Conc: 48.79 ng/ml



#18 Endrin aldehyde

R.T.: 6.110 min
 Delta R.T.: 0.000 min
 Response: 155724878
 Conc: 51.15 ng/ml



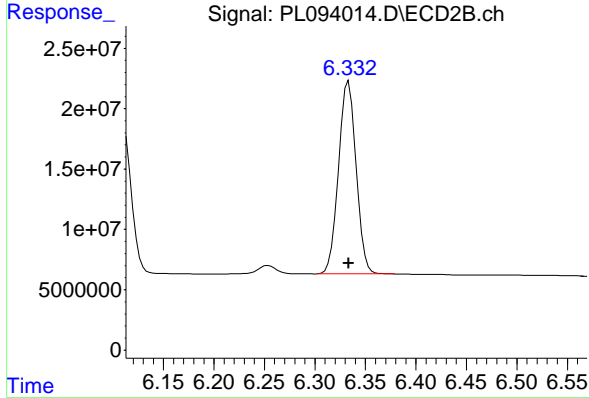
#19 Endosulfan Sulfate

R.T.: 7.158 min
 Delta R.T.: 0.001 min
 Response: 113872994
 Conc: 50.30 ng/ml

Instrument : ECD_L
 Client Sample Id : JPP-3.5-013025MSD

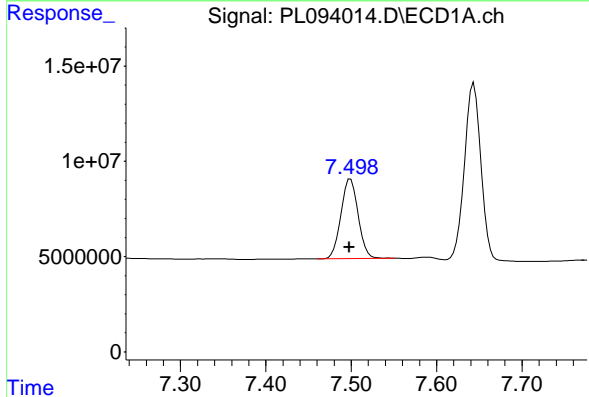
Manual Integrations
 APPROVED

Reviewed By :Abdul Mirza 02/04/2025
 Supervised By :Ankita Jodhani 02/04/2025



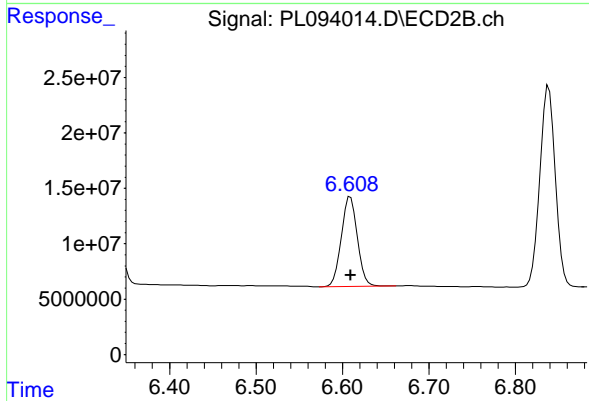
#19 Endosulfan Sulfate

R.T.: 6.333 min
 Delta R.T.: 0.000 min
 Response: 194122938
 Conc: 54.44 ng/ml



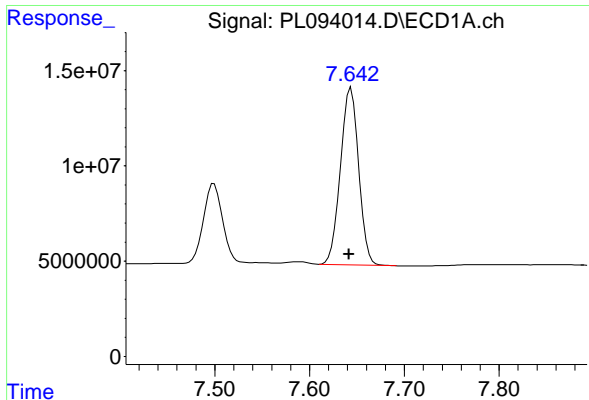
#20 Methoxychlor

R.T.: 7.499 min
 Delta R.T.: 0.001 min
 Response: 58322404
 Conc: 55.90 ng/ml



#20 Methoxychlor

R.T.: 6.609 min
 Delta R.T.: 0.000 min
 Response: 103656033
 Conc: 57.97 ng/ml



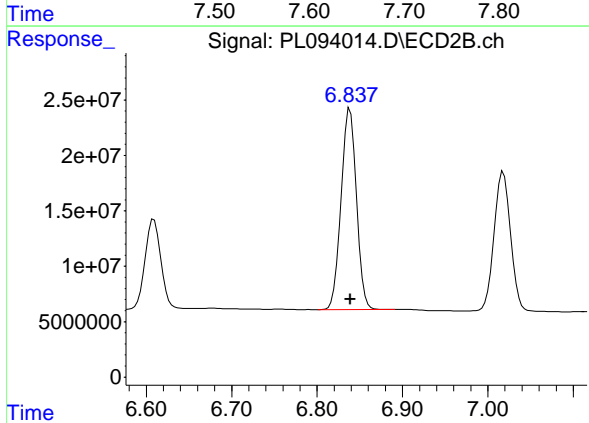
#21 Endrin ketone

R.T.: 7.644 min
 Delta R.T.: 0.002 min
 Response: 123844604
 Conc: 49.09 ng/ml

Instrument : ECD_L
 Client Sample Id : JPP-3.5-013025MSD

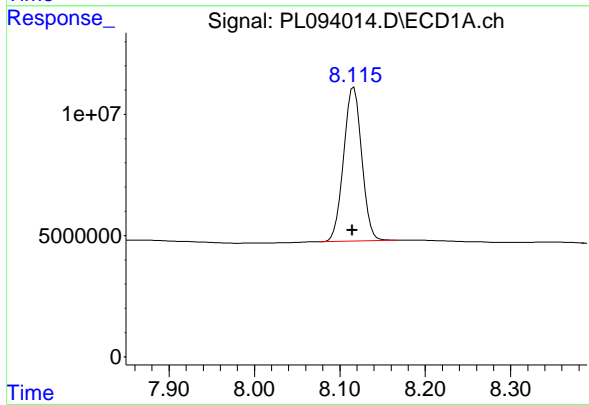
Manual Integrations
 APPROVED

Reviewed By :Abdul Mirza 02/04/2025
 Supervised By :Ankita Jodhani 02/04/2025



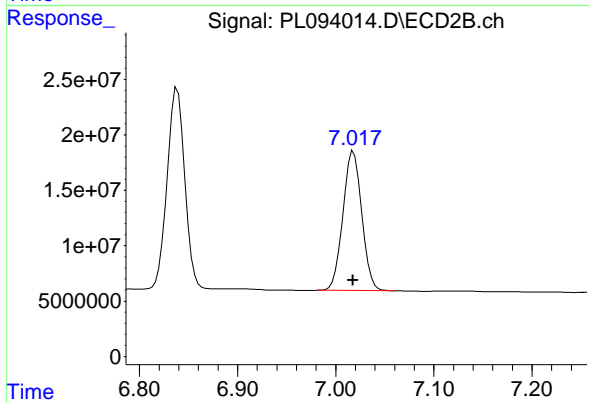
#21 Endrin ketone

R.T.: 6.838 min
 Delta R.T.: 0.000 min
 Response: 226242507
 Conc: 53.93 ng/ml



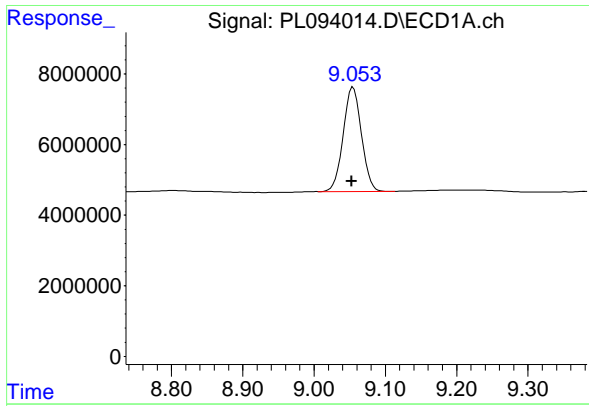
#22 Mirex

R.T.: 8.116 min
 Delta R.T.: 0.002 min
 Response: 93785056
 Conc: 45.04 ng/ml



#22 Mirex

R.T.: 7.018 min
 Delta R.T.: 0.000 min
 Response: 167812054
 Conc: 49.62 ng/ml



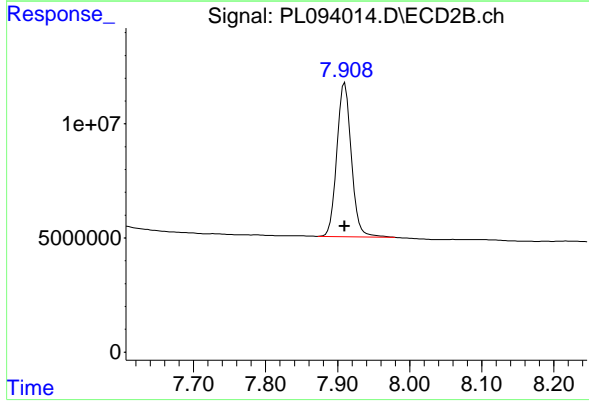
#28 Decachlorobiphenyl

R.T.: 9.055 min
 Delta R.T.: 0.002 min
 Response: 52595184
 Conc: 25.14 ng/ml

Instrument : ECD_L
 ClientSampleId : JPP-3.5-013025MSD

Manual Integrations
 APPROVED

Reviewed By :Abdul Mirza 02/04/2025
 Supervised By :Ankita Jodhani 02/04/2025



#28 Decachlorobiphenyl

R.T.: 7.910 min
 Delta R.T.: 0.000 min
 Response: 93558983
 Conc: 26.70 ng/ml