

ORIGIN ID: HIEA (603) 513-1000  
KARINA ZAMILINSKI  
NOBIS ENGINEERING, INC  
18 CHENELL DRIVE

CONCORD, NH 03301  
UNITED STATES US

SHIP DATE: 30JAN25  
ACTWGT: 40.00 LB  
CAD: 109972084/NET4820  
DIMS: 24x15x15 IN

BILL SENDER

TO SOHIL JODHANI

ALLIANCE TECHNICAL GROUP LLC  
284 SHEFFIELD STREET

MOUNTAINSIDE NJ 07092

(908) 789-8900

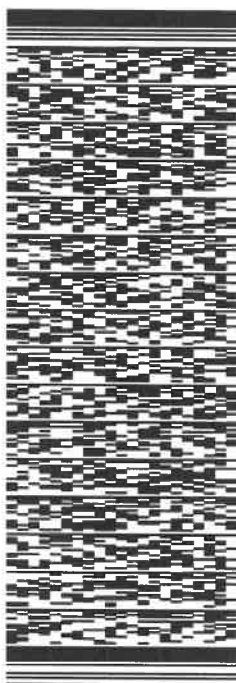
REF: 0000050040412

PO:

DEPT:

1-31-25  
9:35  
2:9

58CJ3/EC17/C6C4



2 of 5

MPS#

0263

7717 8326 4920

Mstr# 7717 8326 3096

0201

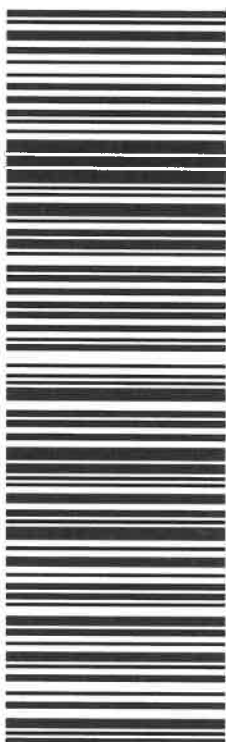
FRI - 31 JAN 10:30A  
PRIORITY OVERNIGHT

XP KBCA

NJ-US

07092

EWR



**After printing this label:**

1. Use the 'Print' button on this page to print your label to your laser or inkjet printer.
2. Fold the printed page along the horizontal line.
3. Place label in shipping pouch and affix it to your shipment so that the barcode portion of the label can be read and scanned.

**Warning: IMPORTANT: TRANSMIT YOUR SHIPPING DATA AND PRINT A MANIFEST:**

At the end of each shipping day, you should perform the FedEx Ground End of Day Close procedure to transmit your shipping data to FedEx. To do so, click on the Ground End of Day Close Button. If required, print the pickup manifest that appears. A printed manifest is required to be tendered along with your packages if they are being picked up by FedEx Ground. If you are dropping your packages off at a FedEx drop off location, the manifest is not required.

Use of this system constitutes your agreement to the service conditions in the current FedEx Service Guide and applicable tariff, available upon request. FedEx will not be responsible for any claim in excess of \$100 per package, whether the result of loss, damage, delay, non-delivery, misdelivery, or misinformation, unless you declare a higher value, pay an additional charge, document your actual loss and file a timely claim. Limitations, including limitations on our liability, can be found in the current FedEx Service Guide and applicable tariff apply. In no event shall FedEx Ground be liable for any special, incidental, or consequential damages, including, without limitation, loss of profit, loss to the intrinsic value of the package, loss of sale, interest income or attorney's fees. Recovery cannot exceed actual documented loss. Items of extraordinary value are subject to separate limitations of liability set forth in the Service Guide and tariff. Written claims must be filed within strict time limits, see current FedEx Service Guide.

ORIGIN ID: HIEA (603) 513-1000  
KARINA ZAMILINSKI  
NOBIS ENGINEERING, INC  
18 CHENELL DRIVE

CONCORD, NH 03301  
UNITED STATES US

SHIP DATE: 30JAN25  
ACTWTG: 40.00 LB  
CAD: 109972084/NET4820  
DIMS: 24x15x15 IN

BILL SENDER

TO SOHIL JODHANI

ALLIANCE TECHNICAL GROUP LLC  
284 SHEFFIELD STREET

MOUNTAINSIDE NJ 07092

(908) 789-8900

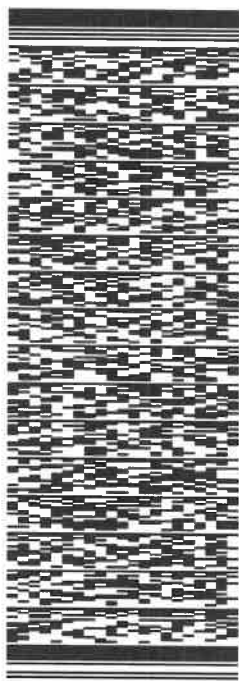
REF: D00005.0040412

PO:

DEPT:

1-31-25  
9:35  
2:40

58CJ3/EC17/C6C4



3 of 5

MP#

0263

7717 8326 5147

Mstr# 7717 8326 3096

0201

FRI - 31 JAN 10:30A

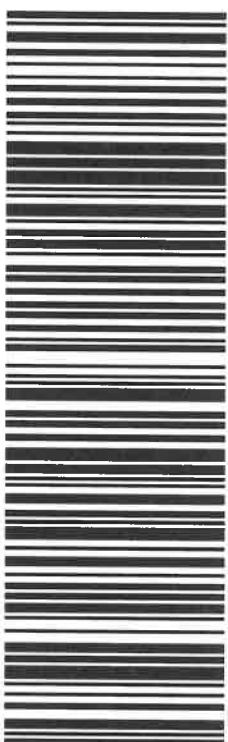
PRIORITY OVERNIGHT

XP KBCA

NJ-US

07092

EWB



**After printing this label:**

1. Use the 'Print' button on this page to print your label to your laser or inkjet printer.
2. Fold the printed page along the horizontal line.
3. Place label in shipping pouch and affix it to your shipment so that the barcode portion of the label can be read and scanned.

**Warning: IMPORTANT: TRANSMIT YOUR SHIPPING DATA AND PRINT A MANIFEST:**

At the end of each shipping day, you should perform the FedEx Ground End of Day Close procedure to transmit your shipping data to FedEx. To do so, click on the Ground End of Day Close Button. If required, print the pickup manifest that appears. A printed manifest is required to be tendered along with your packages if they are being picked up by FedEx Ground. If you are dropping your packages off at a FedEx drop off location, the manifest is not required.

Use of this system constitutes your agreement to the service conditions in the current FedEx Service Guide and applicable tariff, available upon request. FedEx will not be responsible for any claim in excess of \$100 per package, whether the result of loss, damage, delay, non-delivery, misdelivery, or misinformation, unless you declare a higher value, pay an additional charge, document your actual loss and file a timely claim. Limitations, including limitations on our liability, can be found in the current FedEx Service Guide and applicable tariff apply. In no event shall FedEx Ground be liable for any special, incidental, or consequential damages, including, without limitation, loss of profit, loss to the intrinsic value of the package, loss of sale, interest income or attorney's fees. Recovery cannot exceed actual documented loss. Items of extraordinary value are subject to separate limitations of liability set forth in the Service Guide and tariff. Written claims must be filed within strict time limits, see current FedEx Service Guide.

ORIGIN ID: HIEA (603) 513-1000  
KARINA ZAWILINSKI  
NOBIS ENGINEERING, INC  
18 CHENELL DRIVE  
CONCORD, NH 03301  
UNITED STATES US

SHIP DATE: 30JAN25  
ACTWGT: 40.00 LB  
CAD: 109972084INET4820  
DIMS: 24x15x15 IN

BILL SENDER

TO SOHIL JODHANI

ALLIANCE TECHNICAL GROUP LLC  
284 SHEFFIELD STREET

MOUNTAINSIDE NJ 07092

(908) 789-8900

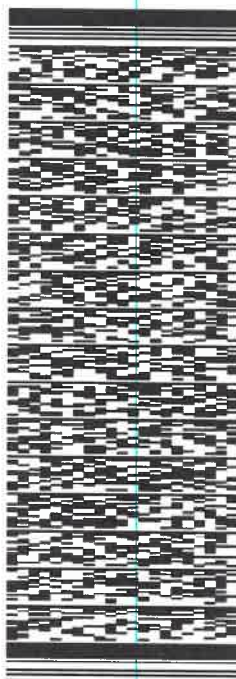
REF: D00005.0040412

PO:

DEPT:

OR  
1-31-25  
9:35  
2.1

58CJ3/EC17/C6C4



J251824121701uv

4 of 5

MPS#

0263

7717 8326 6599

Mstr# 7717 8326 3096

0201

FRI - 31 JAN 10:30A

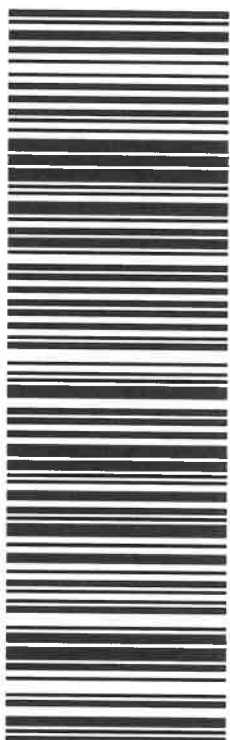
PRIORITY OVERNIGHT

XP KBCA

NJ-US

07092

EWB



**After printing this label:**

1. Use the 'Print' button on this page to print your label to your laser or inkjet printer.
2. Fold the printed page along the horizontal line.
3. Place label in shipping pouch and affix it to your shipment so that the barcode portion of the label can be read and scanned.

**Warning: IMPORTANT: TRANSMIT YOUR SHIPPING DATA AND PRINT A MANIFEST:**

At the end of each shipping day, you should perform the FedEx Ground End of Day Close procedure to transmit your shipping data to FedEx. To do so, click on the Ground End of Day Close Button. If required, print the pickup manifest that appears. A printed manifest is required to be tendered along with your packages if they are being picked up by FedEx Ground. If you are dropping your packages off at a FedEx drop off location, the manifest is not required.

Use of this system constitutes your agreement to the service conditions in the current FedEx Service Guide and applicable tariff, available upon request. FedEx will not be responsible for any claim in excess of \$100 per package, whether the result of loss, damage, delay, non-delivery, misdelivery, or misinformation, unless you declare a higher value, pay an additional charge, document your actual loss and file a timely claim. Limitations, including limitations on our liability, can be found in the current FedEx Service Guide and applicable tariff apply. In no event shall FedEx Ground be liable for any special, incidental, or consequential damages, including, without limitation, loss of profit, loss to the intrinsic value of the package, loss of sale, interest income or attorney's fees. Recovery cannot exceed actual documented loss. Items of extraordinary value are subject to separate limitations of liability set forth in the Service Guide and tariff. Written claims must be filed within strict time limits, see current FedEx Service Guide.

ORIGIN ID: HIEA (603) 513-1000  
KARINA ZAMILINSKI  
NOBIS ENGINEERING, INC  
18 CHENELL DRIVE

CONCORD, NH 03301  
UNITED STATES US

SHIP DATE: 30JAN25  
ACTWGT: 40.00 LB  
CAD: 109972084NET4820  
DIMS: 24x15x15 IN

BILL SENDER

TO SOHIL JODHANI

ALLIANCE TECHNICAL GROUP LLC  
284 SHEFFIELD STREET

MOUNTAINSIDE NJ 07092

(908) 789-8900

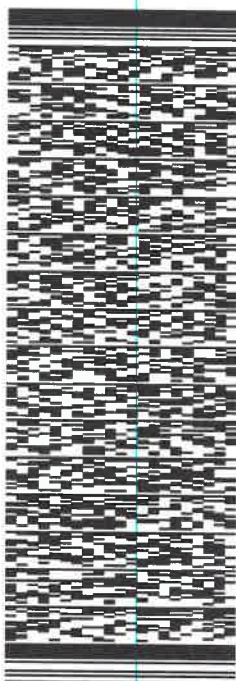
REF: D00005.0040412

PO:

DEPT:

1-31-28  
9:35  
2.0

58CJ3/EC17/C6C4



J251024121701uv

5 of 5

MP#

0263

7717 8326 5331

Mstr# 7717 8326 3096

0201

FRI - 31 JAN 10:30A

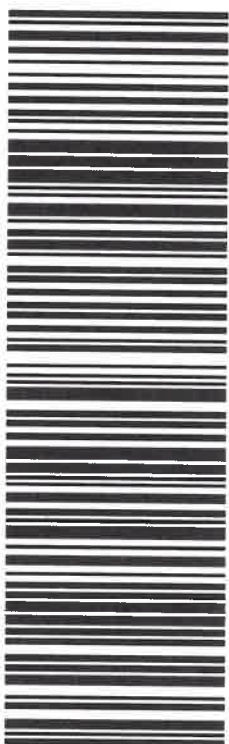
PRIORITY OVERNIGHT

XP KBCA

NJ-US

07092

EWB



**After printing this label:**

1. Use the 'Print' button on this page to print your label to your laser or inkjet printer.
2. Fold the printed page along the horizontal line.
3. Place label in shipping pouch and affix it to your shipment so that the barcode portion of the label can be read and scanned.

**Warning: IMPORTANT: TRANSMIT YOUR SHIPPING DATA AND PRINT A MANIFEST:**

At the end of each shipping day, you should perform the FedEx Ground End of Day Close procedure to transmit your shipping data to FedEx. To do so, click on the Ground End of Day Close Button. If required, print the pickup manifest that appears. A printed manifest is required to be tendered along with your packages if they are being picked up by FedEx Ground. If you are dropping your packages off at a FedEx drop off location, the manifest is not required.

Use of this system constitutes your agreement to the service conditions in the current FedEx Service Guide and applicable tariff, available upon request. FedEx will not be responsible for any claim in excess of \$100 per package, whether the result of loss, damage, delay, non-delivery, misdelivery, or misinformation, unless you declare a higher value, pay an additional charge, document your actual loss and file a timely claim. Limitations, including limitations on our liability, can be found in the current FedEx Service Guide and applicable tariff apply. In no event shall FedEx Ground be liable for any special, incidental, or consequential damages, including, without limitation, loss of profit, loss to the intrinsic value of the package, loss of sale, interest income or attorney's fees. Recovery cannot exceed actual documented loss. Items of extraordinary value are subject to separate limitations of liability set forth in the Service Guide and tariff. Written claims must be filed within strict time limits, see current FedEx Service Guide.