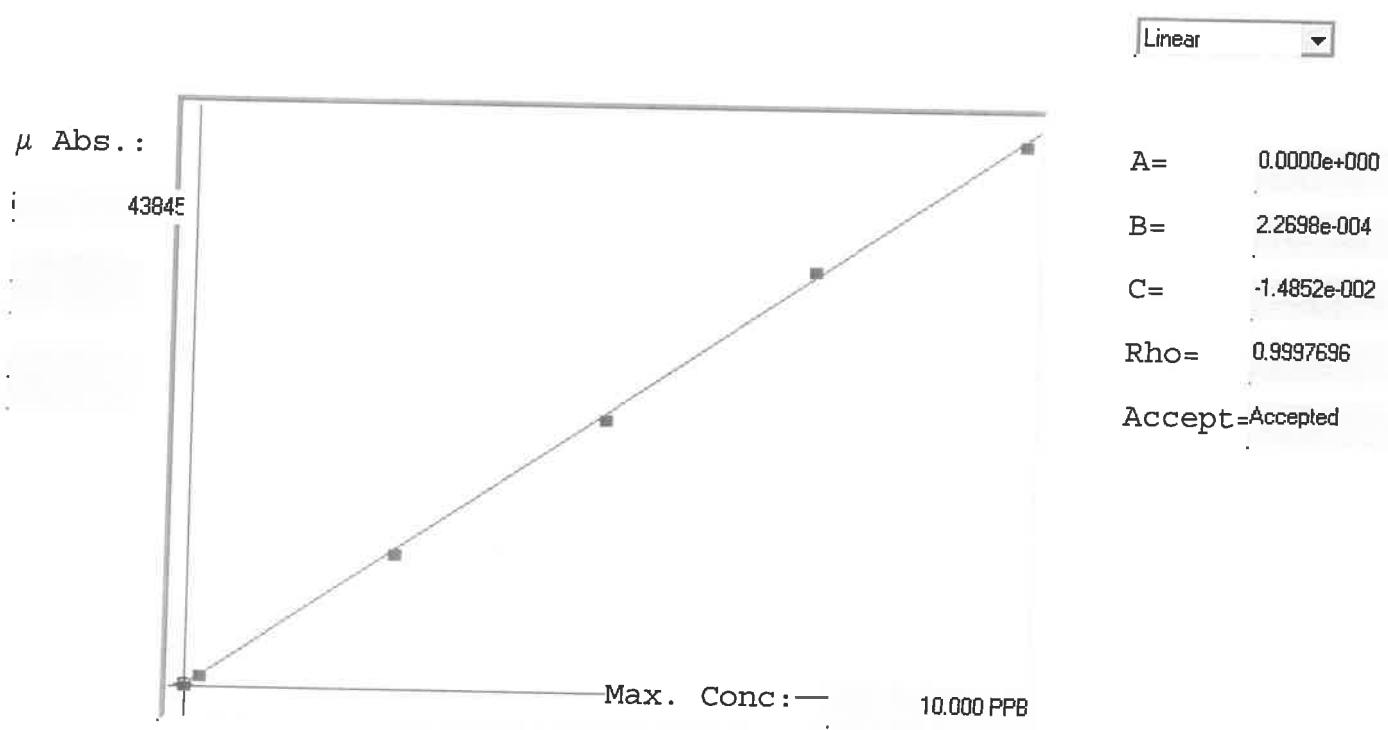


LB134599

7470A

INSTRUMENT ID: CV1



Std ID	Conc.	Calc.	Dev.	Mean	SD or %RSD	Rep 1	Rep 2	Rep 3	Rep 4	Rep 5	%D
0.0	0.000	0.042	0.042	252	0.000	252	0				0/0
0.2	0.200	0.208	0.008	982	0.0 %	982					4
2.5	2.500	2.439	-0.061	10810	0.0 %	10810					-2
5.0	5.000	4.924	-0.076	21759	0.0 %	21759					-2
7.5	7.500	7.649	0.149	33766	0.0 %	33766					2
10.0	10.000	9.937	-0.063	43845	0.0 %	43845					-1

# LB134599 INSTRUMENT ID : CV1

Method: 7470A

Operator: Admin

Date of Analysis: 06 Feb 2025 10:54:39

Sample ID	Extended ID	μ Abs	Conc	Std Conc Method	Units	Date	Type	Type
0.0 - 1	30	252	-	0.00007470A	PPB	06 Feb 2025 11:22:56	S	Std
0.2 - 1	50.2	982	-	0.20007470A	PPB	06 Feb 2025 11:25:13	S	Std
2.5 - 1	52.5	10810	-	2.50007470A	PPB	06 Feb 2025 11:30:08	S	Std
5.0 - 1	55	21759	-	5.00007470A	PPB	06 Feb 2025 11:34:59	S	Std
7.5 - 1	57.5	33766	-	7.50007470A	PPB	06 Feb 2025 11:39:52	S	Std
10.0 - 1	59	43845	-	10.00007470A	PPB	06 Feb 2025 11:47:28	S	Std
ICV88 - 1	ICV88	16813	3.8014	-7470A	PPB	06 Feb 2025 11:52:45	U	SMPL
ICB88 - 1	ICB88	-203	-0.0609	-7470A	PPB	06 Feb 2025 11:55:01	U	SMPL
CCV30 - 1	CCV30	21670	4.9036	-7470A	PPB	06 Feb 2025 11:57:18	U	SMPL
CCB30 - 1	CCB30	-156	-0.0503	-7470A	PPB	06 Feb 2025 11:59:33	U	SMPL
CRA - 1	CRA	938	0.1981	-7470A	PPB	06 Feb 2025 12:01:51	U	SMPL
HighStd - 1	HighStd	44211	10.0203	-7470A	PPB	06 Feb 2025 12:04:05	U	SMPL
ChkStd - 1	ChkStd	31997	7.2479	-7470A	PPB	06 Feb 2025 12:08:42	U	SMPL
Q1201-01 - 1	TAPHHA-MW12-012725-00-T2	294	0.0519	-7470A	PPB	06 Feb 2025 12:10:58	U	SMPL
Q1211-01 - 1	TAPHHA-MW01-012825-00-T4	402	0.0764	-7470A	PPB	06 Feb 2025 12:13:15	U	SMPL
Q1211-02 - 1	TAPIAL2-MW03-012825-00-T3	460	0.0896	-7470A	PPB	06 Feb 2025 12:15:32	U	SMPL
Q1266-01 - 1	TRE-25-0004	127	0.0140	-7470A	PPB	06 Feb 2025 12:17:48	U	SMPL
Q1266-02 - 1	TRE-25-0010	453	0.0880	-7470A	PPB	06 Feb 2025 12:20:05	U	SMPL
Q1266-03 - 1	TRE-25-0012	3	-0.0142	-7470A	PPB	06 Feb 2025 12:22:22	U	SMPL
Q1271-04 - 1	3190	423	0.0812	-7470A	PPB	06 Feb 2025 12:26:06	U	SMPL
CCV31 - 1	CCV31	20694	4.6823	-7470A	PPB	06 Feb 2025 12:28:21	U	SMPL
CCB31 - 1	CCB31	-143	-0.0473	-7470A	PPB	06 Feb 2025 12:30:36	U	SMPL
Q1282-01 - 1	SW-WTS-02	99	0.0076	-7470A	PPB	06 Feb 2025 12:32:53	U	SMPL
Q1201-01DUP - 1	TAPHHA-MW12-012725-00-T2DUP	135	0.0158	-7470A	PPB	06 Feb 2025 12:35:09	U	SMPL
Q1201-01MS - 1	TAPHHA-MW12-012725-00-T2MS	14508	3.2782	-7470A	PPB	06 Feb 2025 12:37:24	U	SMPL
Q1201-01MSD - 1	TAPHHA-MW12-012725-00-T2MSD	13839	3.1264	-7470A	PPB	06 Feb 2025 12:39:40	U	SMPL
Q1201-01LX5 - 1		-46	-0.0253	-7470A	PPB	06 Feb 2025 12:41:57	U	SMPL
Q1201-01A - 1		15951	3.6058	-7470A	PPB	06 Feb 2025 12:44:15	U	SMPL
PB166596BL - 1	PBW	87	0.0049	-7470A	PPB	06 Feb 2025 12:49:04	U	SMPL
PB166596BS - 1	LCSW	16840	3.8075	-7470A	PPB	06 Feb 2025 12:56:43	U	SMPL
CCV32 - 1	CCV32	22628	5.1213	-7470A	PPB	06 Feb 2025 12:59:01	U	SMPL
CCB32 - 1	CCB32	-46	-0.0253	-7470A	PPB	06 Feb 2025 13:01:18	U	SMPL