

Data Path : Z:\voasrv\HPCHEM1\MSVOA\_X\Data\VX021125\  
 Data File : VX044901.D  
 Acq On : 11 Feb 2025 13:20  
 Operator : JC/MD  
 Sample : Q1283-02  
 Misc : 5.0mL/MSVOA\_X/WATER  
 ALS Vial : 10 Sample Multiplier: 1

Instrument :  
 MSVOA\_X  
 ClientSampleId :  
 BP-VPB-192-TB-20250130

Integration Parameters: RTEINT.P

Integrator: RTE  
 Smoothing : ON Filtering: 5  
 Sampling : 1 Min Area: 3 % of largest Peak  
 Start Thrs: 0.2 Max Peaks: 100  
 Stop Thrs : 0 Peak Location: TOP

If leading or trailing edge < 100 prefer < Baseline drop else tangent >  
 Peak separation: 5

Method : Z:\voasrv\HPCHEM1\MSVOA\_X\Method\82X021025W.M  
 Title : SW846 8260

Signal : TIC: VX044901.D\data.ms

peak #	R.T. min	first scan	max scan	last scan	PK TY	peak height	corr. area	corr. % max.	% of total
1	1.624	86	88	96	rVB5	6671	9138	1.43%	0.281%
2	5.379	693	704	721	rBV2	70002	208725	32.74%	6.411%
3	5.544	721	731	746	rBV2	99109	288953	45.32%	8.875%
4	5.952	788	798	811	rBV	78076	214792	33.69%	6.597%
5	6.757	921	930	952	rBV	184189	454603	71.31%	13.963%
6	8.647	1233	1240	1257	rBV	381048	637547	100.00%	19.581%
7	10.049	1465	1470	1487	rBV	399100	550251	86.31%	16.900%
8	11.079	1634	1639	1653	rBV	309900	400637	62.84%	12.305%
9	12.018	1788	1793	1805	rBV	396207	491219	77.05%	15.087%

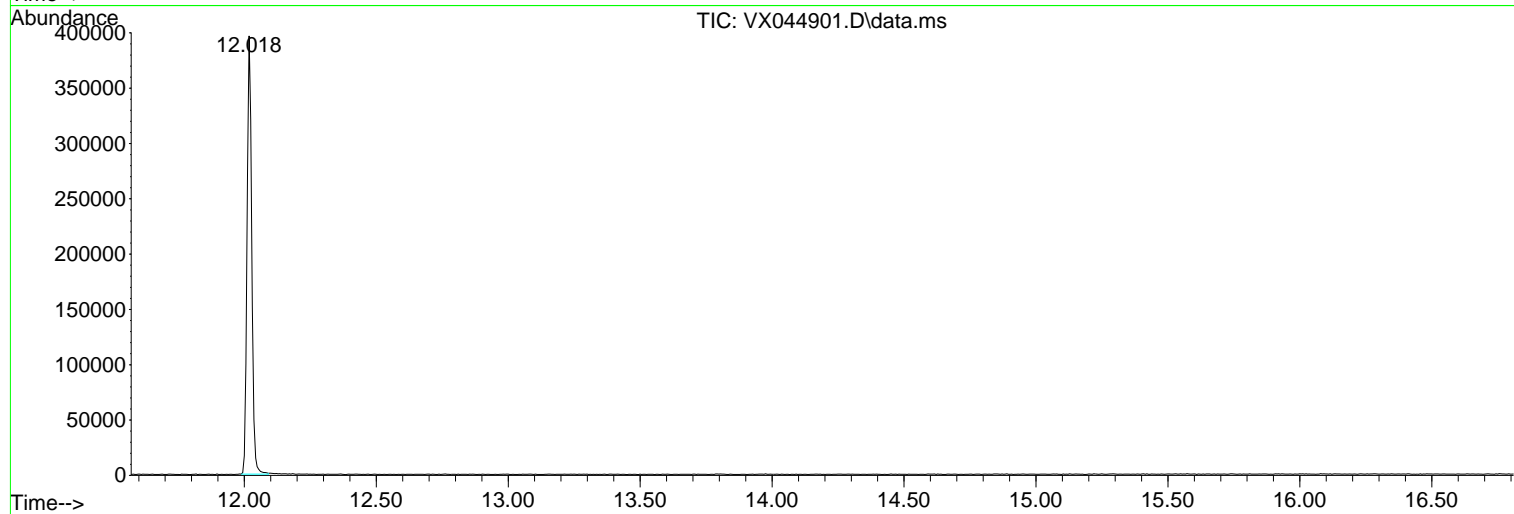
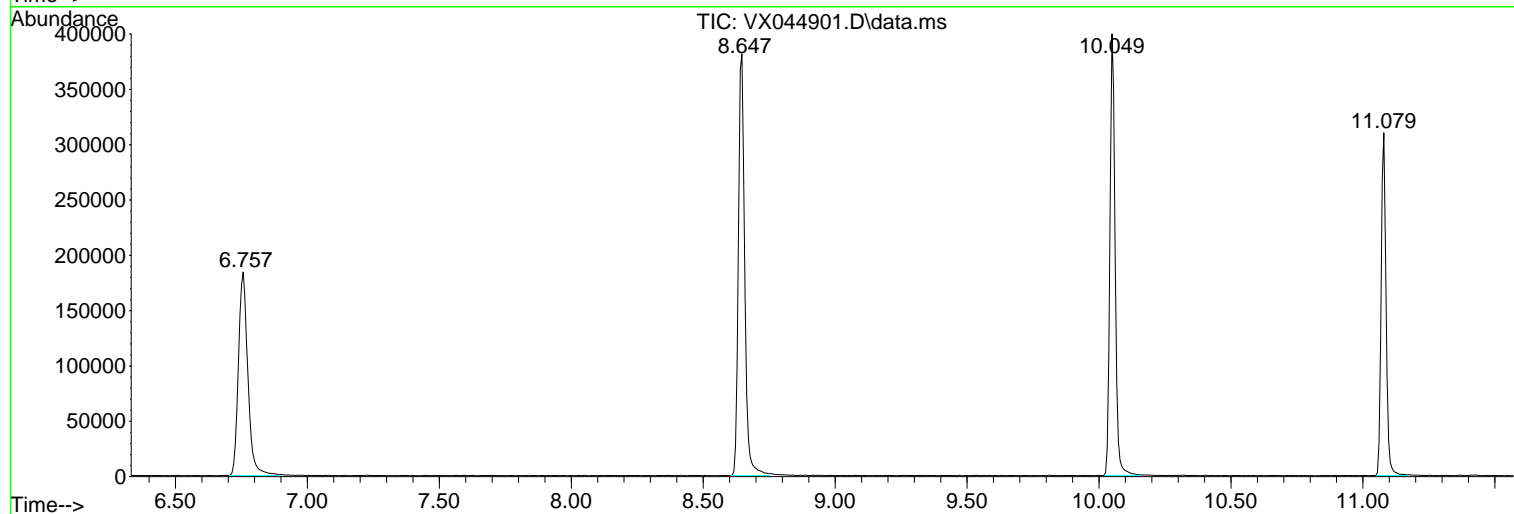
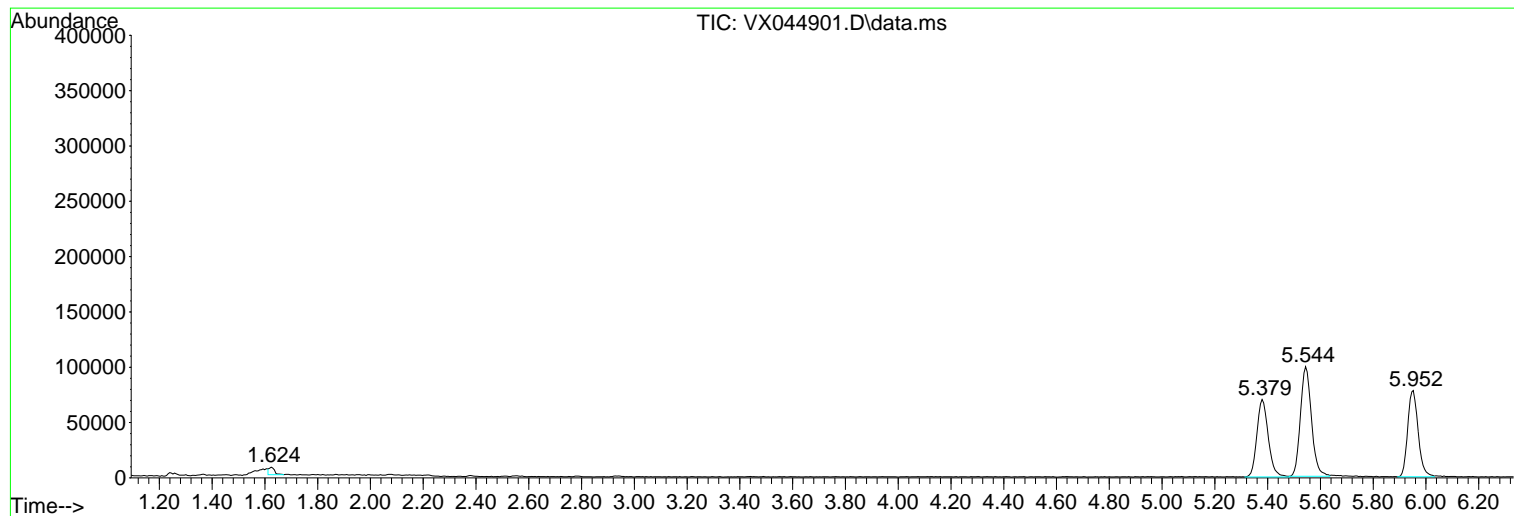
Sum of corrected areas: 3255865

Data Path : Z:\voasrv\HPCHEM1\MSVOA\_X\Data\VX021125\  
Data File : VX044901.D  
Acq On : 11 Feb 2025 13:20  
Operator : JC/MD  
Sample : Q1283-02  
Misc : 5.0mL/MSVOA\_X/WATER  
ALS Vial : 10 Sample Multiplier: 1

Instrument :  
MSVOA\_X  
ClientSampleId :  
BP-VPB-192-TB-20250130

Quant Method : Z:\voasrv\HPCHEM1\MSVOA\_X\Method\82X021025W.M  
Quant Title : SW846 8260

TIC Library : C:\Database\NIST20.L  
TIC Integration Parameters: LSCINT.P



Library Search Compound Report

Data Path : Z:\voasrv\HPCHEM1\MSVOA\_X\Data\VX021125\  
Data File : VX044901.D  
Acq On : 11 Feb 2025 13:20  
Operator : JC/MD  
Sample : Q1283-02  
Misc : 5.0mL/MSVOA\_X/WATER  
ALS Vial : 10 Sample Multiplier: 1

Instrument :  
MSVOA\_X  
ClientSampleId :  
BP-VPB-192-TB-20250130

Quant Method : Z:\voasrv\HPCHEM1\MSVOA\_X\Method\82X021025W.M  
Quant Title : SW846 8260

TIC Library : C:\Database\NIST20.L  
TIC Integration Parameters: LSCINT.P

No Library Search Compounds Detected

\*\*\*\*\*

Data Path : Z:\voasrv\HPCHEM1\MSVOA\_X\Data\VX021125\  
Data File : VX044901.D  
Acq On : 11 Feb 2025 13:20  
Operator : JC/MD  
Sample : Q1283-02  
Misc : 5.0mL/MSVOA\_X/WATER  
ALS Vial : 10 Sample Multiplier: 1

Instrument :  
MSVOA\_X  
ClientSampleId :  
BP-VPB-192-TB-20250130

Quant Method : Z:\voasrv\HPCHEM1\MSVOA\_X\Method\82X021025W.M  
Quant Title : SW846 8260

TIC Library : C:\Database\NIST20.L  
TIC Integration Parameters: LSCINT.P

TIC Top Hit name	RT	EstConc	Units	Response	--Internal Standard--			
					#	RT	Resp	Conc

---