

Data Path : Z:\pestpcbsrv\HPCHEM1\FID\_B\Data\FB020625\  
 Data File : FB031457.D  
 Signal(s) : FID2B.CH  
 Acq On : 6 Feb 2025 13:46  
 Operator : YP/AJ  
 Sample : Q1308-05 50X  
 Misc : 7.44G/5.00 ML MEOH  
 ALS Vial : 9 Sample Multiplier: 1

Instrument :  
 FID\_B  
 ClientSampleId :  
 EX-11-TPH-6

Integration File: Calibration.e  
 Quant Time: Feb 07 01:43:40 2025  
 Quant Method : Z:\pestpcbsrv\HPCHEM1\FID\_B\Method\FB011525.M  
 Quant Title :  
 QLast Update : Wed Jan 15 12:01:08 2025  
 Response via : Initial Calibration  
 Integrator: ChemStation

Volume Inj. : 5 g/ml  
 Signal Phase : RTX-502.2  
 Signal Info : 60mx0.53mmx3.00um

Compound	R.T.	Response	Conc Units
-----			
System Monitoring Compounds			
5) s AAA-TFT	8.795	621208	26.043 ng/ml

Target Compounds

(f)=RT Delta > 1/2 Window

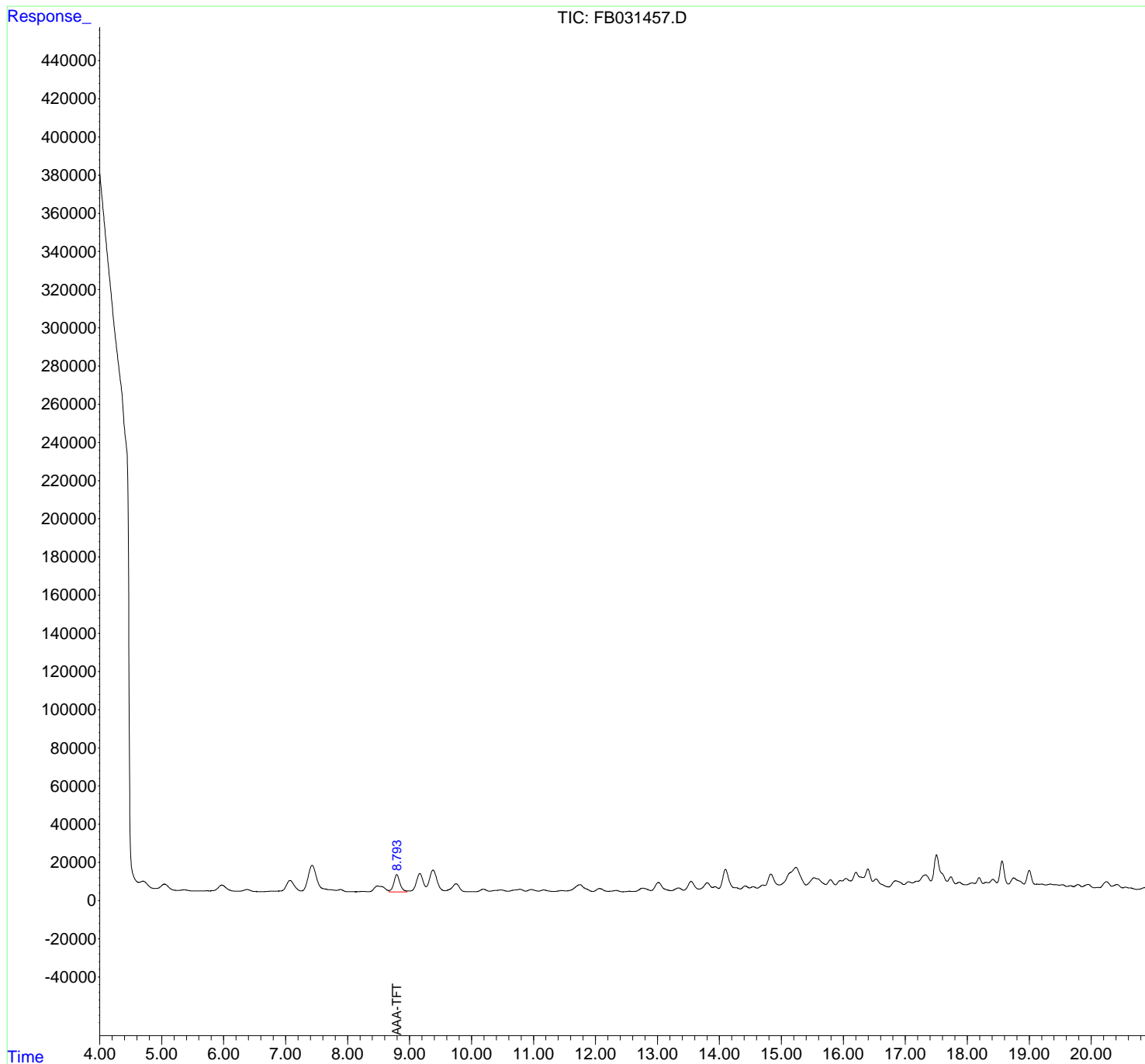
(m)=manual int.

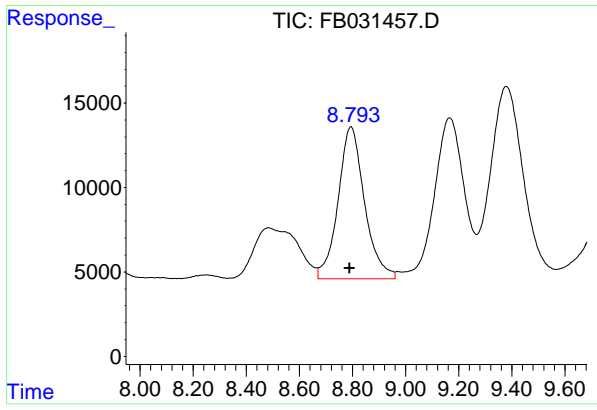
Data Path : Z:\pestpcbsrv\HPCHEM1\FID\_B\Data\FB020625\  
 Data File : FB031457.D  
 Signal(s) : FID2B.CH  
 Acq On : 6 Feb 2025 13:46  
 Operator : YP/AJ  
 Sample : Q1308-05 50X  
 Misc : 7.44G/5.00 ML MEOH  
 ALS Vial : 9 Sample Multiplier: 1

Instrument :  
 FID\_B  
 ClientSampleId :  
 EX-11-TPH-6

Integration File: Calibration.e  
 Quant Time: Feb 07 01:43:40 2025  
 Quant Method : Z:\pestpcbsrv\HPCHEM1\FID\_B\Method\FB011525.M  
 Quant Title :  
 QLast Update : Wed Jan 15 12:01:08 2025  
 Response via : Initial Calibration  
 Integrator: ChemStation

Volume Inj. : 5 g/ml  
 Signal Phase : RTX-502.2  
 Signal Info : 60mx0.53mmx3.00um





#5 AAA-TFT

R.T.: 8.795 min  
Delta R.T.: 0.005 min  
Response: 621208  
Conc: 26.04 ng/ml

Instrument : FID\_B  
ClientSampleId : EX-11-TPH-6