

Data Path : Z:\pestpcbsrv\HPCHEM1\FID_B\Data\FB020725\
 Data File : FB031493.D
 Signal(s) : FID2B.CH
 Acq On : 7 Feb 2025 15:53
 Operator : YP/AJ
 Sample : Q1308-13 500X
 Misc : 7.52G/5.00 ML MEOH
 ALS Vial : 14 Sample Multiplier: 1

Instrument :
 FID_B
ClientSampleId :
 EX-11-TPH-14

Integration File: Calibration.e
 Quant Time: Feb 08 01:01:52 2025
 Quant Method : Z:\pestpcbsrv\HPCHEM1\FID_B\Method\FB011525.M
 Quant Title :
 QLast Update : Wed Jan 15 12:01:08 2025
 Response via : Initial Calibration
 Integrator: ChemStation

Volume Inj. : 5 g/ml
 Signal Phase : RTX-502.2
 Signal Info : 60mx0.53mmx3.00um

Compound	R.T.	Response	Conc Units

System Monitoring Compounds			
5) s AAA-TFT	8.791	548598	22.999 ng/ml
Target Compounds			

(f)=RT Delta > 1/2 Window

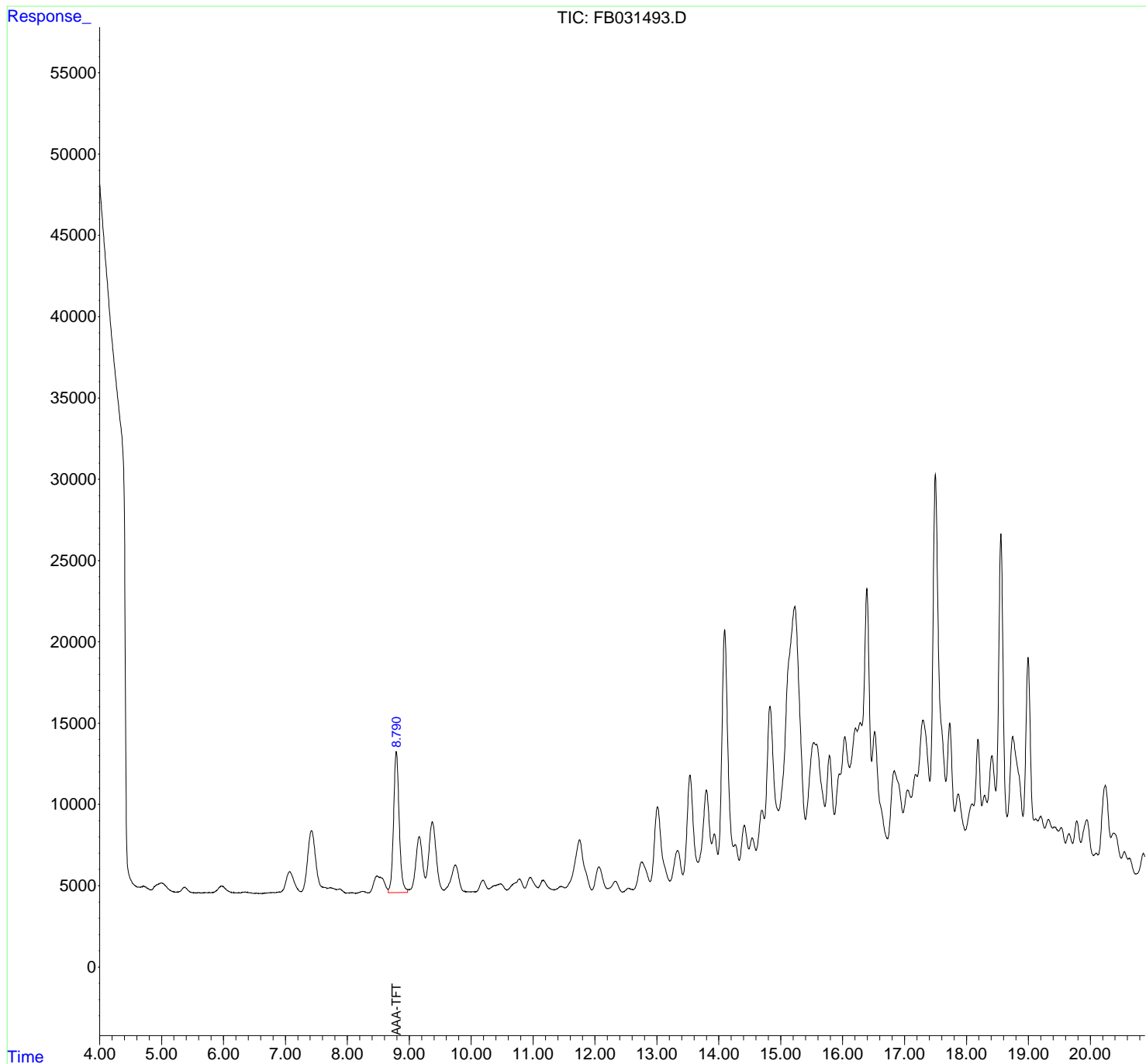
(m)=manual int.

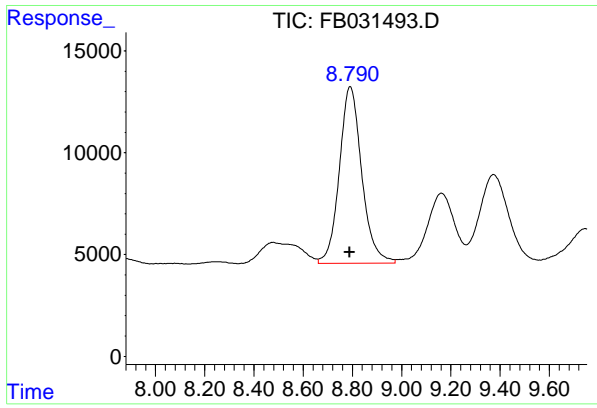
Data Path : Z:\pestpcbsrv\HPCHEM1\FID_B\Data\FB020725\
 Data File : FB031493.D
 Signal(s) : FID2B.CH
 Acq On : 7 Feb 2025 15:53
 Operator : YP/AJ
 Sample : Q1308-13 500X
 Misc : 7.52G/5.00 ML MEOH
 ALS Vial : 14 Sample Multiplier: 1

Instrument :
 FID_B
 ClientSampleId :
 EX-11-TPH-14

Integration File: Calibration.e
 Quant Time: Feb 08 01:01:52 2025
 Quant Method : Z:\pestpcbsrv\HPCHEM1\FID_B\Method\FB011525.M
 Quant Title :
 QLast Update : Wed Jan 15 12:01:08 2025
 Response via : Initial Calibration
 Integrator: ChemStation

Volume Inj. : 5 g/ml
 Signal Phase : RTX-502.2
 Signal Info : 60mx0.53mmx3.00um





#5 AAA-TFT

R.T.: 8.791 min
Delta R.T.: 0.002 min
Response: 548598
Conc: 23.00 ng/ml

Instrument : FID_B
ClientSampleId : EX-11-TPH-14