

LB134671

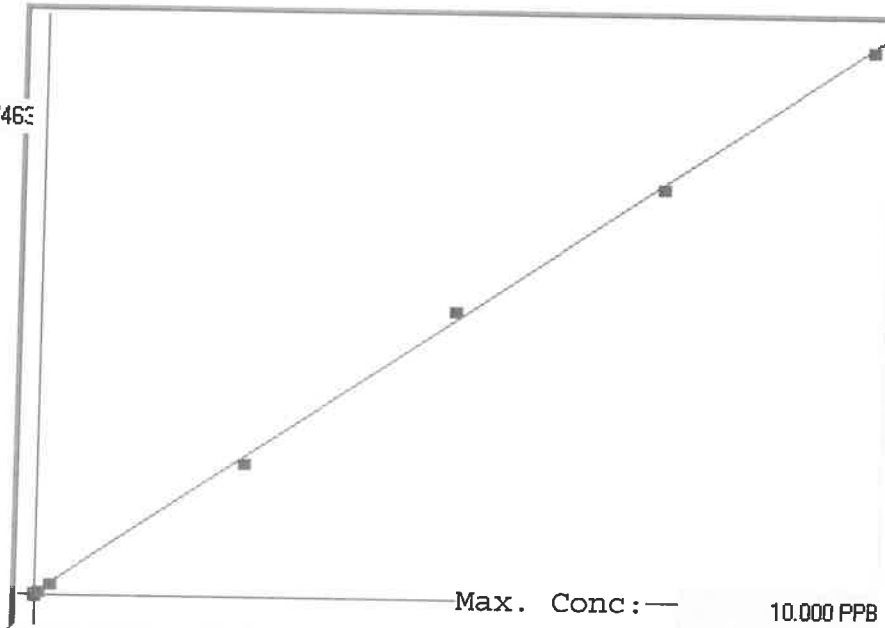
245.1

INSTRUMENT ID: CV1

Linear

$\mu$  Abs.:

37463



A= 0.0000e+000

B= 2.6679e-004

C= -3.2611e-002

Rho= 0.9997364

Accept=Accepted

Std ID	Conc.	Calc.	Dev.	Mean	SD or %RSD	Rep 1	Rep 2	Rep 3	Rep 4	Rep 5	$\sigma/21)$
0.0	0.000	0.000	0.000	123	0.000	123					-
0.05	0.050	0.043	-0.007	285	0.0 %	285					-14
0.2	0.200	0.198	-0.002	865	0.0 %	865	0				-1
2.5	2.500	2.406	-0.094	9142	0.0 %	9142					-4
5.0	5.000	5.194	0.194	19591	0.0 %	19591					4
7.5	7.500	7.446	-0.054	28031	0.0 %	28031					-1
10.0	10.000	9.962	-0.038	37463	0.0 %	37463					0

# LB134671 INSTRUMENT ID : CV1

Method: 245.1

Operator: Admin

Date of Analysis: 11 Feb 2025 14:53:35

Sample ID	Extended ID	μ Abs.	Conc.	Std Conc	Method	Units	Date	Type	Type
0.0 - 1	50	123	-	0.0000	245.1	PPB	11 Feb 2025 15:00:02	S	Std
0.05 - 1	50.05	285	-	0.0500	245.1	PPB	11 Feb 2025 15:02:19	S	Std
0.2 - 1	50.2	865	-	0.2000	245.1	PPB	11 Feb 2025 15:04:36	S	Std
2.5 - 1	52.5	9142	-	2.5000	245.1	PPB	11 Feb 2025 15:06:53	S	Std
5.0 - 1	55	19591	-	5.0000	245.1	PPB	11 Feb 2025 15:09:10	S	Std
7.5 - 1	59.5	28031	-	7.5000	245.1	PPB	11 Feb 2025 15:11:26	S	Std
10.0 - 1	510	37463	-	10.0000	245.1	PPB	11 Feb 2025 15:13:45	S	Std
ICV96 - 1	ICV96	14545	3.8478	-245.1		PPB	11 Feb 2025 15:17:18	U	SMPL
ICB96 - 1	ICB96	-55	-0.0473	-245.1		PPB	11 Feb 2025 15:19:33	U	SMPL
CCV56 - 1	CCV56	19756	5.2381	-245.1		PPB	11 Feb 2025 15:21:50	U	SMPL
CCB56 - 1	CCB56	-164	-0.0764	-245.1		PPB	11 Feb 2025 15:24:05	U	SMPL
CRA - 1	CRA	330	0.0554	-245.1		PPB	11 Feb 2025 15:28:58	U	SMPL
HighStd - 1	HighStd	38522	10.2446	-245.1		PPB	11 Feb 2025 15:31:12	U	SMPL
ChkStd - 1	ChkStd	26155	6.9452	-245.1		PPB	11 Feb 2025 15:33:28	U	SMPL
PB166684BL - 1	PBW	76	-0.0123	-245.1		PPB	11 Feb 2025 15:35:46	U	SMPL
Q1300-02 - 1	COMP	455	0.0888	-245.1		PPB	11 Feb 2025 15:47:46	U	SMPL
Q1322-01 - 1	MANHOLE	28	-0.0251	-245.1		PPB	11 Feb 2025 15:50:03	U	SMPL
Q1322-01DUP - 1	MANHOLEDUP	171	0.0130	-245.1		PPB	11 Feb 2025 15:52:20	U	SMPL
Q1322-01MS - 1	MANHOLEMS	13426	3.5493	-245.1		PPB	11 Feb 2025 15:57:34	U	SMPL
CCV57 - 1	CCV57	18914	5.0134	-245.1		PPB	11 Feb 2025 15:59:49	U	SMPL
CCB57 - 1	CCB57	-131	-0.0676	-245.1		PPB	11 Feb 2025 16:02:05	U	SMPL
Q1322-01MSD - 1	MANHOLEMSD	14313	3.7859	-245.1		PPB	11 Feb 2025 16:04:23	U	SMPL
Q1172-05 - 1	PT-HG-WS	29881	7.9393	-245.1		PPB	11 Feb 2025 16:06:39	U	SMPL
Q1322-01LX5 - 1		-482	-0.1612	-245.1		PPB	11 Feb 2025 16:13:35	U	SMPL
Q1322-01A - 1		14626	3.8694	-245.1		PPB	11 Feb 2025 16:15:53	U	SMPL
PB166684BS - 1	LCSW	14190	3.7531	-245.1		PPB	11 Feb 2025 16:18:10	U	SMPL
CCV58 - 1	CCV58	19510	5.1724	-245.1		PPB	11 Feb 2025 16:20:28	U	SMPL
CCB58 - 1	CCB58	-137	-0.0692	-245.1		PPB	11 Feb 2025 16:22:46	U	SMPL