

Data Path : Z:\svoasrv\HPCHEM1\BNA_F\Data\BF020625\
 Data File : BF141479.D
 Acq On : 06 Feb 2025 14:14
 Operator : RC/JU
 Sample : SSTDICC080
 Misc :
 ALS Vial : 9 Sample Multiplier: 1

Instrument :
 BNA_F
 ClientSampleId :
 SSTDICC080

Quant Time: Feb 06 16:01:02 2025
 Quant Method : Z:\svoasrv\HPCHEM1\BNA_F\Methods\8270-BF020625.M
 Quant Title : ASP BNA STANDARDS FOR 5 POINT CALIBRATION
 QLast Update : Thu Feb 06 15:49:10 2025
 Response via : Initial Calibration

Compound	R.T.	QIon	Response	Conc	Units	Dev(Min)	
Internal Standards							
1) 1,4-Dichlorobenzene-d4	6.792	152	90415	20.000	ng	0.00	
21) Naphthalene-d8	8.075	136	341252	20.000	ng	0.00	
39) Acenaphthene-d10	9.833	164	186230	20.000	ng	0.00	
64) Phenanthrene-d10	11.316	188	312902	20.000	ng	0.00	
76) Chrysene-d12	13.962	240	184347	20.000	ng	0.00	
86) Perylene-d12	15.415	264	170605	20.000	ng	0.00	
System Monitoring Compounds							
5) 2-Fluorophenol	5.410	112	878184	152.272	ng	0.00	
7) Phenol-d6	6.439	99	1112281	152.591	ng	0.00	
23) Nitrobenzene-d5	7.363	82	1048314	160.228	ng	0.00	
42) 2,4,6-Tribromophenol	10.627	330	291947	156.058	ng	0.00	
45) 2-Fluorobiphenyl	9.151	172	1789795	148.066	ng	0.00	
79) Terphenyl-d14	12.904	244	1781602	163.152	ng	0.00	
Target Compounds							
2) 1,4-Dioxane	2.481	88	181328	78.119	ng		Qvalue 99
3) Pyridine	3.216	79	435462	78.838	ng		99
4) n-Nitrosodimethylamine	3.187	42	301403	82.409	ng		97
6) Aniline	6.463	93	498556	72.913	ng		94
8) 2-Chlorophenol	6.586	128	470975	75.577	ng		99
10) Phenol	6.457	94	567332	74.779	ng		99
11) bis(2-Chloroethyl)ether	6.534	93	454141	79.695	ng		99
12) 1,3-Dichlorobenzene	6.734	146	494180	75.115	ng		99
13) 1,4-Dichlorobenzene	6.810	146	498585	74.175	ng		99
14) 1,2-Dichlorobenzene	6.963	146	464559	74.465	ng		99
15) Benzyl Alcohol	6.939	79	420673	75.258	ng		100
16) 2,2'-oxybis(1-Chloropr...	7.069	45	708318	72.613	ng		77
17) 2-Methylphenol	7.057	107	370173	75.912	ng		97
18) Hexachloroethane	7.304	117	190062	76.402	ng		97
19) n-Nitroso-di-n-propyla...	7.216	70	328097	75.249	ng		98
20) 3+4-Methylphenols	7.216	107	450046	72.613	ng	#	88
22) Acetophenone	7.210	105	652334	76.846	ng		98
24) Nitrobenzene	7.381	77	513249	80.448	ng		98
25) Isophorone	7.622	82	838076	80.337	ng		99
26) 2-Nitrophenol	7.692	139	261386	82.350	ng		98
27) 2,4-Dimethylphenol	7.733	122	300036	80.915	ng		98
28) bis(2-Chloroethoxy)met...	7.828	93	529442	79.203	ng		99
29) 2,4-Dichlorophenol	7.939	162	399027	79.645	ng		98
30) 1,2,4-Trichlorobenzene	8.016	180	428656	78.568	ng		99
31) Naphthalene	8.098	128	1381453	77.769	ng		100
32) Benzoic acid	7.892	122	335418	87.086	ng		98
33) 4-Chloroaniline	8.157	127	504834	81.400	ng		98
34) Hexachlorobutadiene	8.210	225	257532	78.628	ng		100
35) Caprolactam	8.545	113	125619	82.350	ng		97
36) 4-Chloro-3-methylphenol	8.639	107	441925	79.630	ng		98
37) 2-Methylnaphthalene	8.786	142	889774	76.975	ng		100
38) 1-Methylnaphthalene	8.886	142	861860	76.983	ng		99
40) 1,2,4,5-Tetrachloroben...	8.951	216	418579	77.689	ng		99
41) Hexachlorocyclopentadiene	8.939	237	159430	88.965	ng		98
43) 2,4,6-Trichlorophenol	9.069	196	277156	79.591	ng		97
44) 2,4,5-Trichlorophenol	9.116	196	298856	79.189	ng		98

Data Path : Z:\svoasrv\HPCHEM1\BNA_F\Data\BF020625\
 Data File : BF141479.D
 Acq On : 06 Feb 2025 14:14
 Operator : RC/JU
 Sample : SSTDICC080
 Misc :
 ALS Vial : 9 Sample Multiplier: 1

Instrument :
 BNA_F
 ClientSampleId :
 SSTDICC080

Quant Time: Feb 06 16:01:02 2025
 Quant Method : Z:\svoasrv\HPCHEM1\BNA_F\Methods\8270-BF020625.M
 Quant Title : ASP BNA STANDARDS FOR 5 POINT CALIBRATION
 QLast Update : Thu Feb 06 15:49:10 2025
 Response via : Initial Calibration

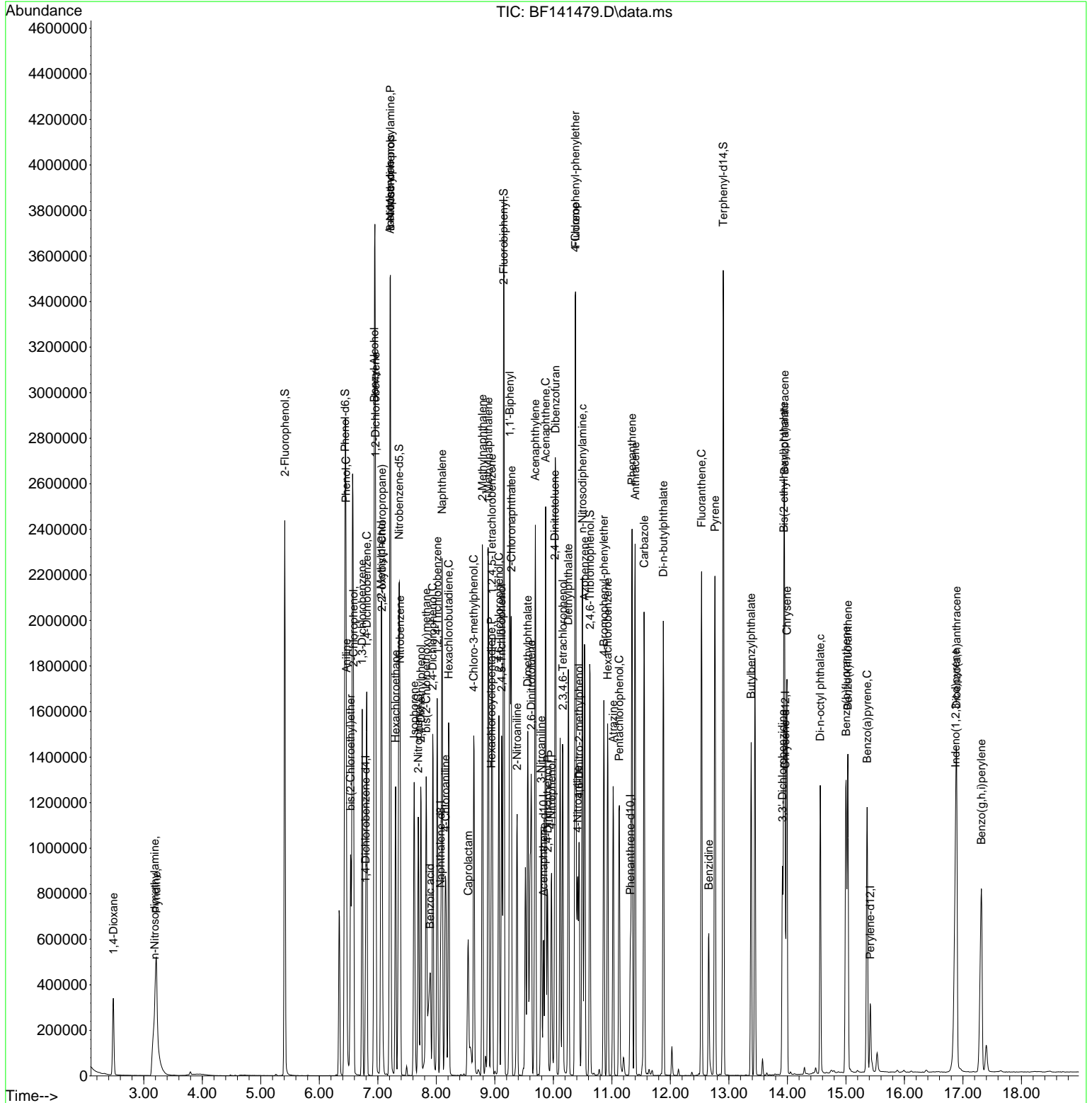
Compound	R.T.	QIon	Response	Conc	Units	Dev(Min)
46) 1,1'-Biphenyl	9.257	154	1100720	76.237	ng	99
47) 2-Chloronaphthalene	9.280	162	821334	76.929	ng	99
48) 2-Nitroaniline	9.380	65	286532	79.969	ng	97
49) Acenaphthylene	9.692	152	1211515	76.291	ng	99
50) Dimethylphthalate	9.563	163	1002121	79.265	ng	99
51) 2,6-Dinitrotoluene	9.622	165	215853	78.101	ng	94
52) Acenaphthene	9.869	154	819818	76.791	ng	99
53) 3-Nitroaniline	9.792	138	235511	79.173	ng	97
54) 2,4-Dinitrophenol	9.904	184	147768	89.960	ng	95
55) Dibenzofuran	10.039	168	1174157	74.928	ng	100
56) 4-Nitrophenol	9.969	139	187131	84.744	ng	97
57) 2,4-Dinitrotoluene	10.027	165	284954	77.449	ng	95
58) Fluorene	10.380	166	909704	75.080	ng	99
59) 2,3,4,6-Tetrachlorophenol	10.163	232	253454	78.006	ng	98
60) Diethylphthalate	10.257	149	945293	75.995	ng	100
61) 4-Chlorophenyl-phenyle...	10.374	204	435522	74.716	ng	99
62) 4-Nitroaniline	10.416	138	241257	79.873	ng	99
63) Azobenzene	10.533	77	963689	77.931	ng	99
65) 4,6-Dinitro-2-methylph...	10.439	198	185427	85.309	ng	99
66) n-Nitrosodiphenylamine	10.498	169	785313	78.404	ng	99
67) 4-Bromophenyl-phenylether	10.863	248	276228	78.988	ng	96
68) Hexachlorobenzene	10.927	284	285111	79.174	ng	97
69) Atrazine	11.021	200	219923	73.188	ng	100
70) Pentachlorophenol	11.127	266	200556	87.100	ng	99
71) Phenanthrene	11.345	178	1312474	76.201	ng	100
72) Anthracene	11.398	178	1322462	76.380	ng	99
73) Carbazole	11.551	167	1168253	74.989	ng	99
74) Di-n-butylphthalate	11.880	149	1382706	76.865	ng	99
75) Fluoranthene	12.533	202	1333237	73.011	ng	100
77) Benzidine	12.657	184	354555	87.207	ng	99
78) Pyrene	12.763	202	1319554	84.086	ng	100
80) Butylbenzylphthalate	13.380	149	459803	84.592	ng	100
81) Benzo(a)anthracene	13.951	228	943291	76.977	ng	100
82) 3,3'-Dichlorobenzidine	13.915	252	263773	75.143	ng	100
83) Chrysene	13.992	228	906415	80.108	ng	100
84) Bis(2-ethylhexyl)phtha...	13.939	149	517884	84.477	ng	99
85) Di-n-octyl phthalate	14.562	149	803601	91.886	ng	100
87) Indeno(1,2,3-cd)pyrene	16.874	276	961023	91.166	ng	100
88) Benzo(b)fluoranthene	15.004	252	865205	75.529	ng	100
89) Benzo(k)fluoranthene	15.033	252	776323	79.364	ng	99
90) Benzo(a)pyrene	15.362	252	742932	80.150	ng	99
91) Dibenzo(a,h)anthracene	16.892	278	773684	90.578	ng	99
92) Benzo(g,h,i)perylene	17.315	276	831418	93.015	ng	99

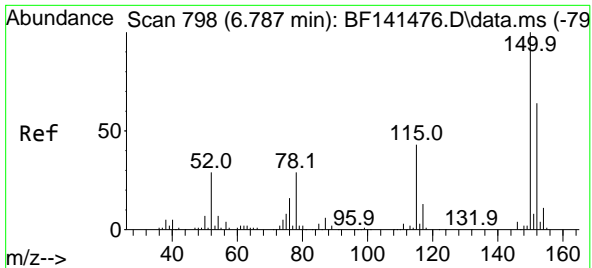
(#) = qualifier out of range (m) = manual integration (+) = signals summed

Data Path : Z:\svoasrv\HPCHEM1\BNA_F\Data\BF020625\
 Data File : BF141479.D
 Acq On : 06 Feb 2025 14:14
 Operator : RC/JU
 Sample : SSTDICC080
 Misc :
 ALS Vial : 9 Sample Multiplier: 1

Instrument :
 BNA_F
 ClientSampleId :
 SSTDICC080

Quant Time: Feb 06 16:01:02 2025
 Quant Method : Z:\svoasrv\HPCHEM1\BNA_F\Methods\8270-BF020625.M
 Quant Title : ASP BNA STANDARDS FOR 5 POINT CALIBRATION
 QLast Update : Thu Feb 06 15:49:10 2025
 Response via : Initial Calibration

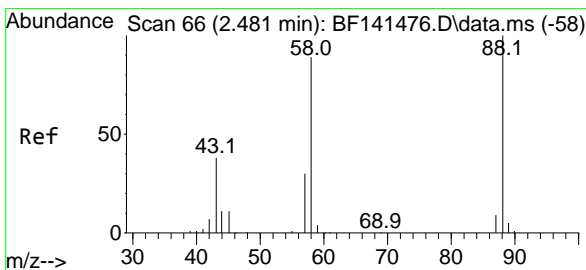
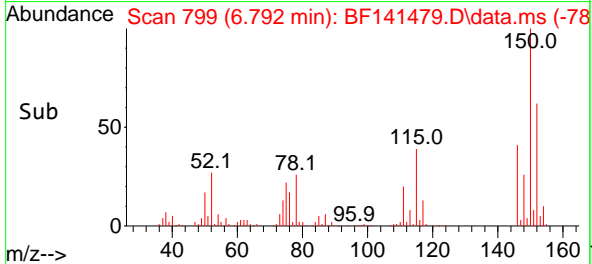
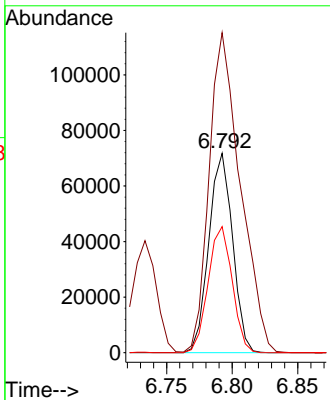
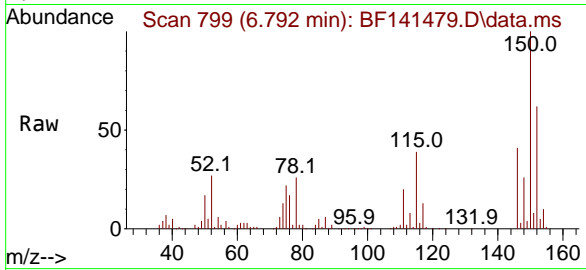




#1
 1,4-Dichlorobenzene-d4
 Concen: 20.000 ng
 RT: 6.792 min Scan# 799
 Delta R.T. 0.000 min
 Lab File: BF141479.D
 Acq: 06 Feb 2025 14:14

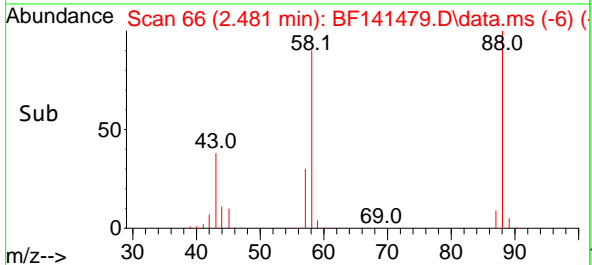
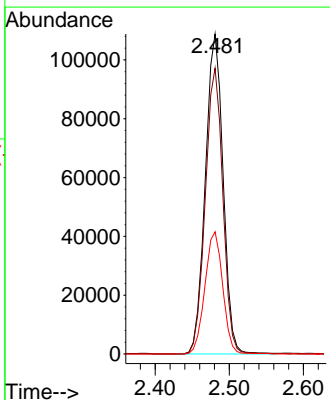
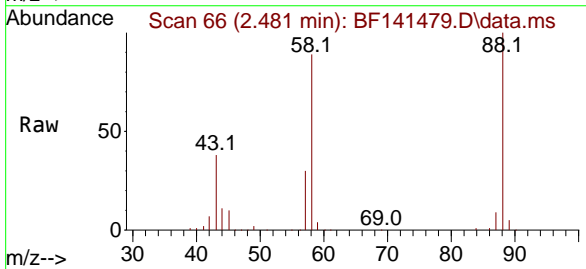
Instrument :
 BNA_F
 ClientSampleId :
 SSTDICC080

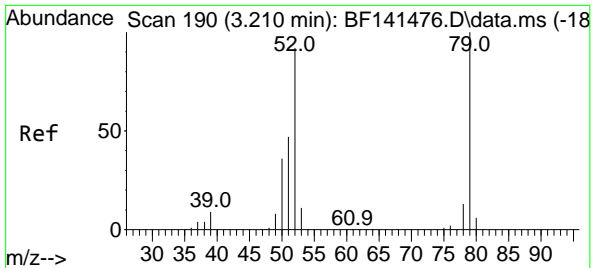
Tgt Ion:152 Resp: 90415
 Ion Ratio Lower Upper
 152 100
 150 160.5 125.0 187.4
 115 63.2 53.6 80.4



#2
 1,4-Dioxane
 Concen: 78.119 ng
 RT: 2.481 min Scan# 66
 Delta R.T. 0.000 min
 Lab File: BF141479.D
 Acq: 06 Feb 2025 14:14

Tgt Ion: 88 Resp: 181328
 Ion Ratio Lower Upper
 88 100
 58 88.2 71.1 106.7
 43 38.3 30.6 46.0





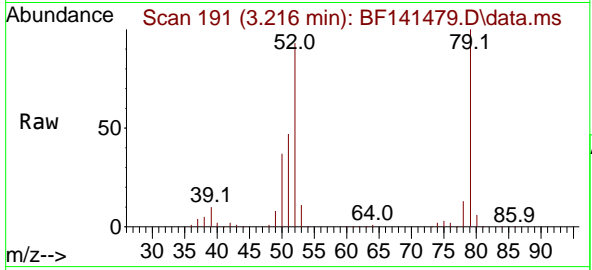
#3
 Pyridine
 Concen: 78.838 ng
 RT: 3.216 min Scan# 191
 Delta R.T. 0.000 min
 Lab File: BF141479.D
 Acq: 06 Feb 2025 14:14

Instrument :

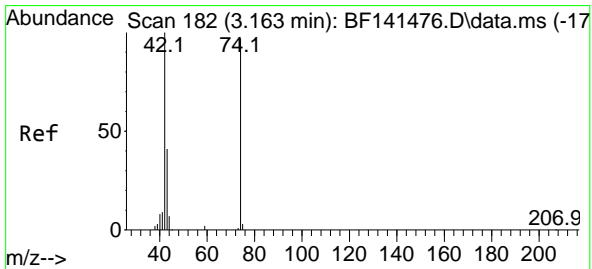
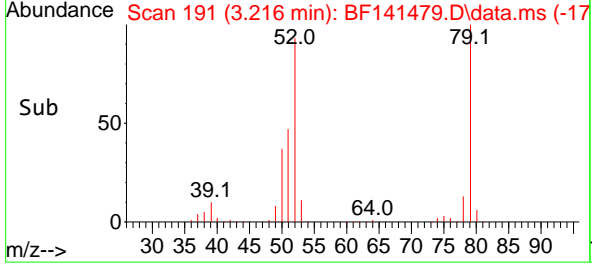
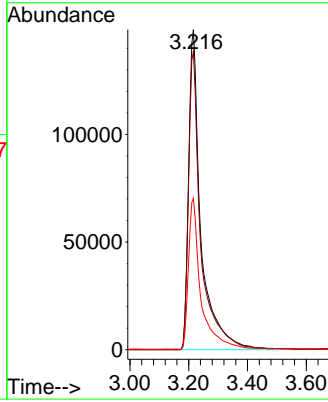
BNA_F

ClientSampleId :

SSTDICC080

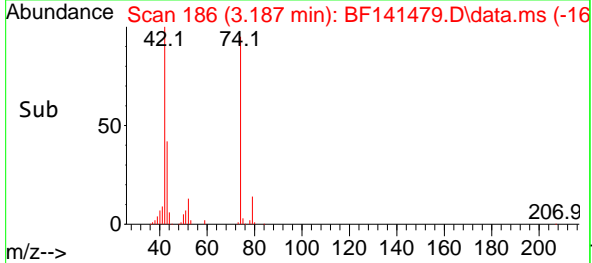
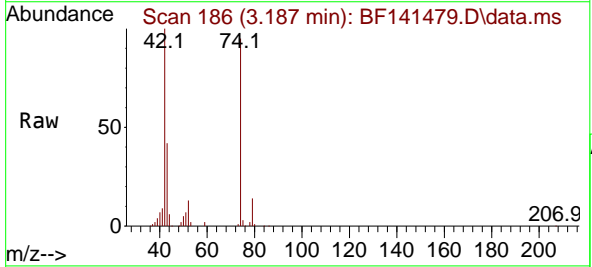
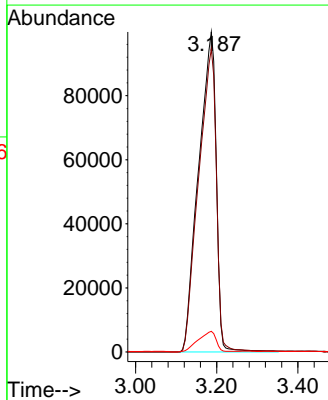


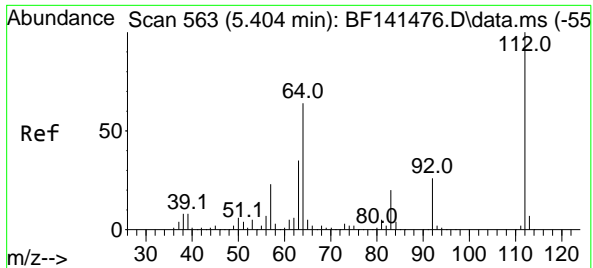
Tgt Ion: 79 Resp: 435462
 Ion Ratio Lower Upper
 79 100
 52 93.2 73.7 110.5
 51 47.3 37.5 56.3



#4
 n-Nitrosodimethylamine
 Concen: 82.409 ng
 RT: 3.187 min Scan# 186
 Delta R.T. 0.000 min
 Lab File: BF141479.D
 Acq: 06 Feb 2025 14:14

Tgt Ion: 42 Resp: 301403
 Ion Ratio Lower Upper
 42 100
 74 94.7 78.0 117.0
 44 6.4 5.4 8.2



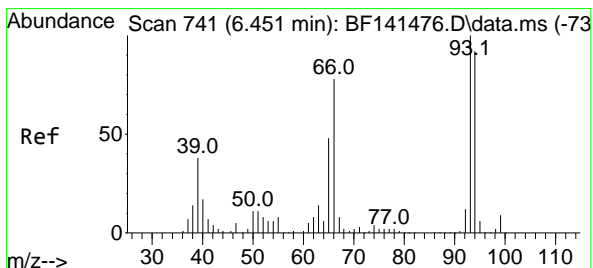
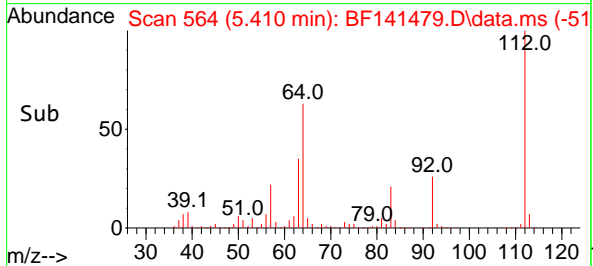
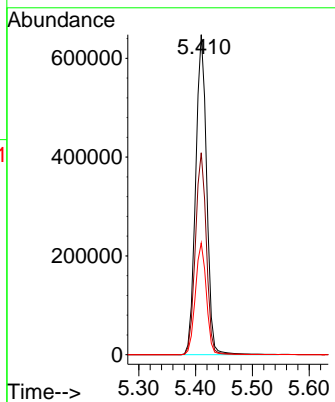
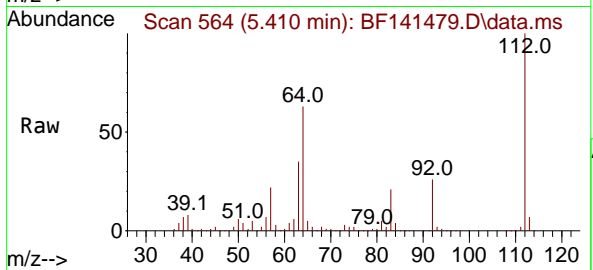


#5
 2-Fluorophenol
 Concen: 152.272 ng
 RT: 5.410 min Scan# 50
 Delta R.T. 0.000 min
 Lab File: BF141479.D
 Acq: 06 Feb 2025 14:14

Instrument : BNA_F
 Client Sample Id : BF141479.D
 SSTDICC080

Tgt Ion: 112 Resp: 878184

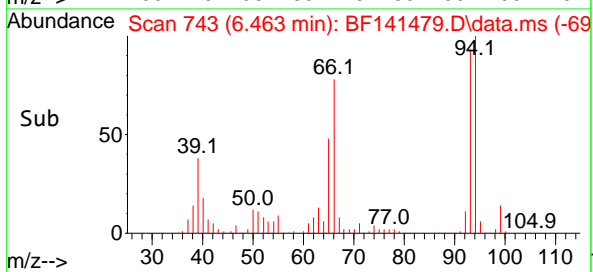
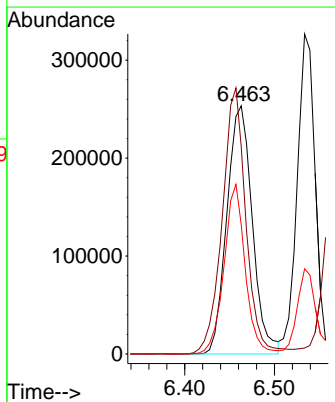
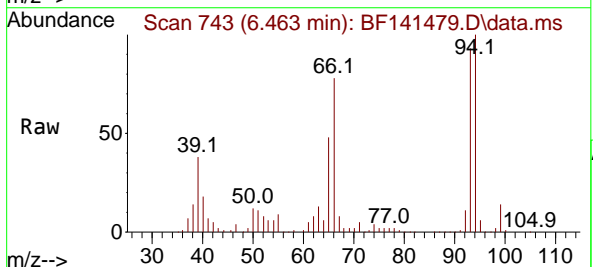
Ion	Ratio	Lower	Upper
112	100		
64	63.1	51.1	76.7
63	34.9	28.4	42.6

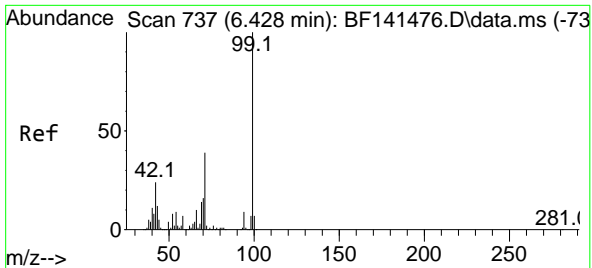


#6
 Aniline
 Concen: 72.913 ng
 RT: 6.463 min Scan# 743
 Delta R.T. 0.000 min
 Lab File: BF141479.D
 Acq: 06 Feb 2025 14:14

Tgt Ion: 93 Resp: 498556

Ion	Ratio	Lower	Upper
93	100		
66	83.5	62.6	94.0
65	52.1	38.3	57.5

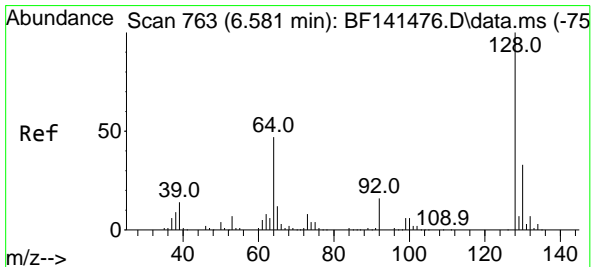
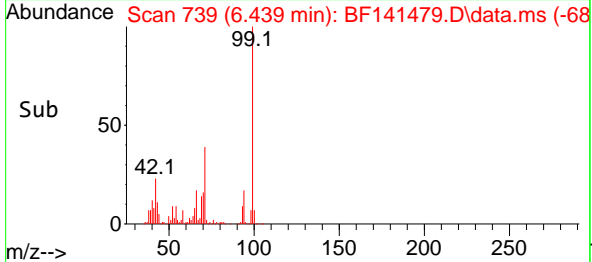
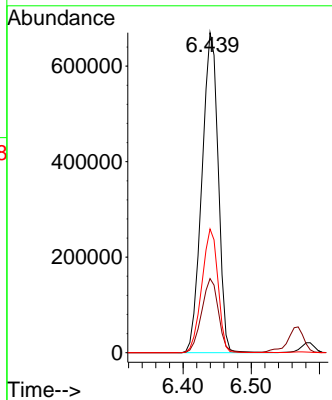
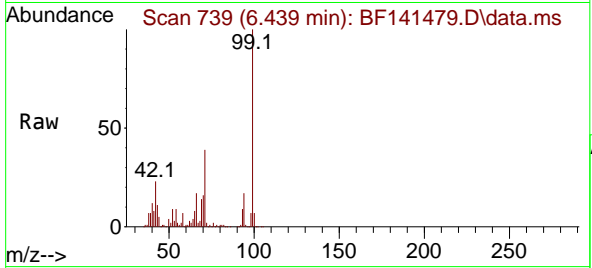




#7
 Phenol-d6
 Concen: 152.591 ng
 RT: 6.439 min Scan# 711
 Delta R.T. 0.000 min
 Lab File: BF141479.D
 Acq: 06 Feb 2025 14:14

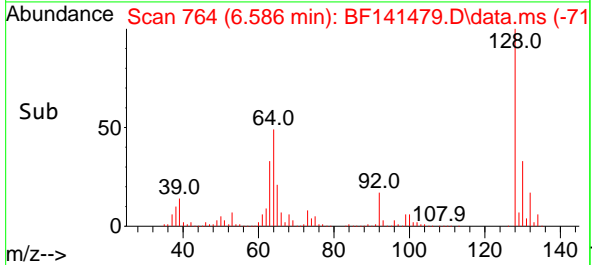
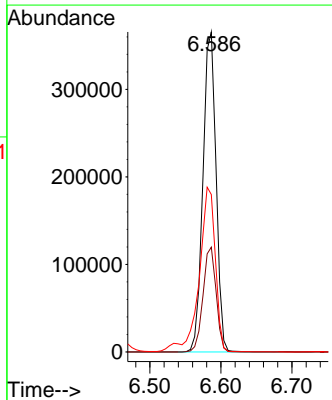
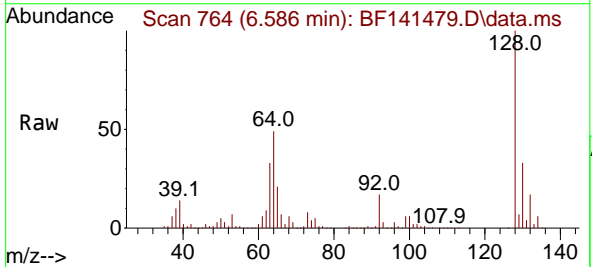
Instrument :
 BNA_F
 ClientSampleId :
 SSTDICC080

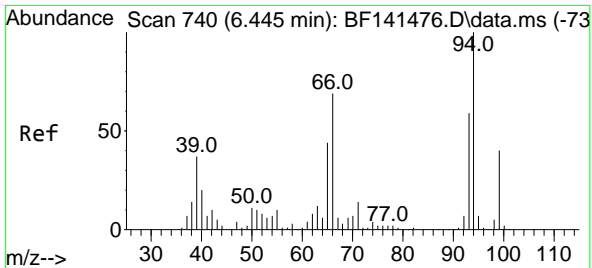
Tgt Ion: 99 Resp: 1112281
 Ion Ratio Lower Upper
 99 100
 42 23.2 19.1 28.7
 71 38.7 31.1 46.7



#8
 2-Chlorophenol
 Concen: 75.577 ng
 RT: 6.586 min Scan# 764
 Delta R.T. 0.000 min
 Lab File: BF141479.D
 Acq: 06 Feb 2025 14:14

Tgt Ion: 128 Resp: 470975
 Ion Ratio Lower Upper
 128 100
 130 32.8 12.7 52.7
 64 49.2 28.3 68.3

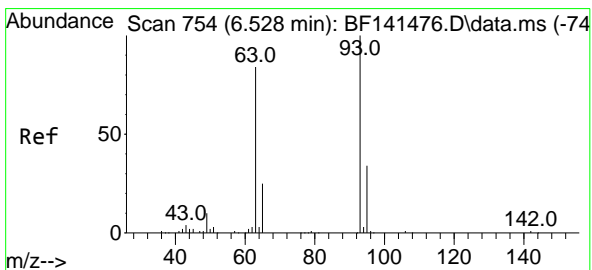
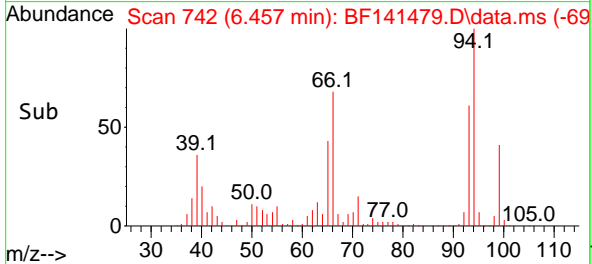
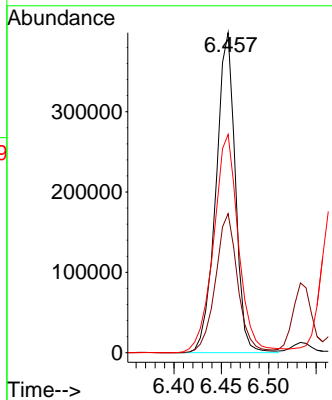
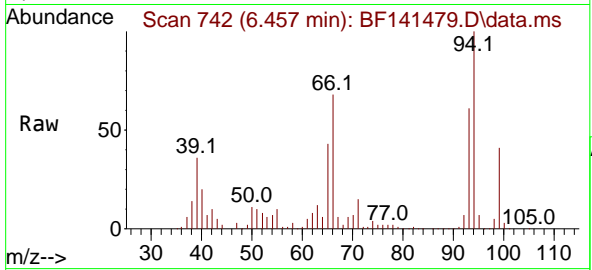




#10
Phenol
Concen: 74.779 ng
RT: 6.457 min Scan# 74
Delta R.T. 0.000 min
Lab File: BF141479.D
Acq: 06 Feb 2025 14:14

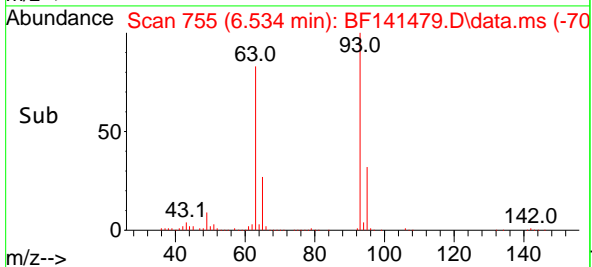
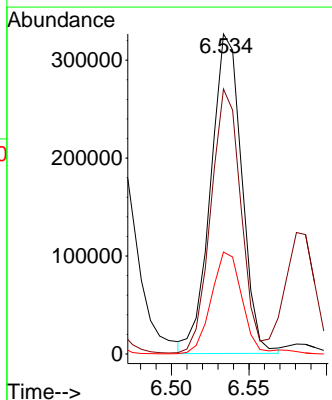
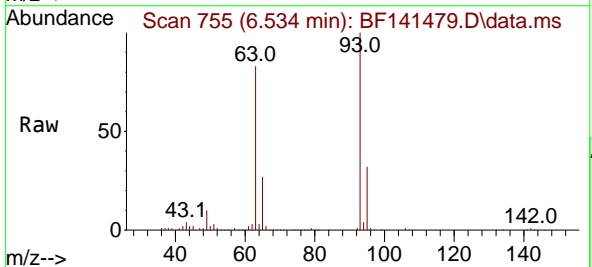
Instrument :
BNA_F
ClientSampleId :
SSTDICC080

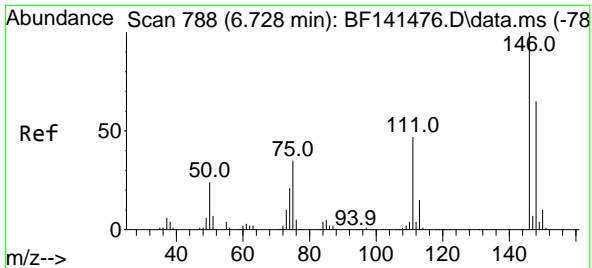
Tgt Ion: 94 Resp: 567332
Ion Ratio Lower Upper
94 100
65 43.5 23.7 63.7
66 68.2 49.3 89.3



#11
bis(2-Chloroethyl)ether
Concen: 79.695 ng
RT: 6.534 min Scan# 755
Delta R.T. 0.000 min
Lab File: BF141479.D
Acq: 06 Feb 2025 14:14

Tgt Ion: 93 Resp: 454141
Ion Ratio Lower Upper
93 100
63 82.8 62.0 102.0
95 31.9 12.6 52.6



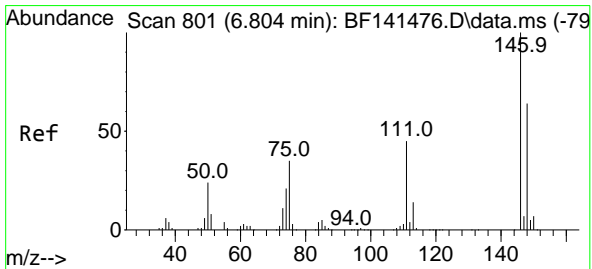
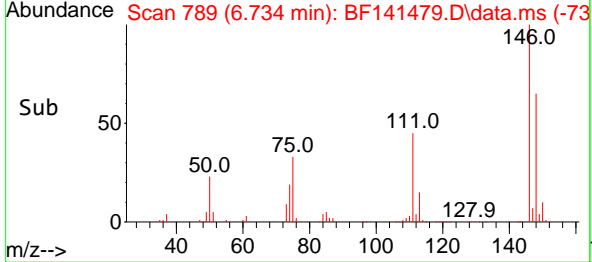
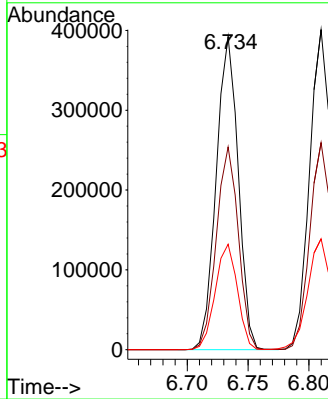
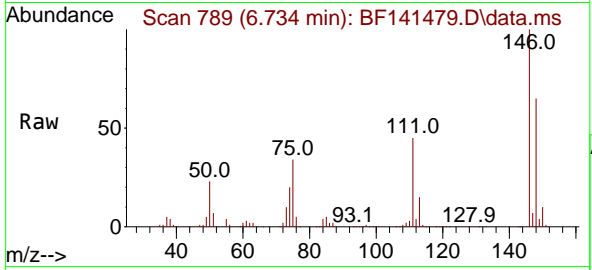


#12
 1,3-Dichlorobenzene
 Concen: 75.115 ng
 RT: 6.734 min Scan# 71
 Delta R.T. 0.000 min
 Lab File: BF141479.D
 Acq: 06 Feb 2025 14:14

Instrument :
 BNA_F
 ClientSampleId :
 SSTDICC080

Tgt Ion:146 Resp: 494180

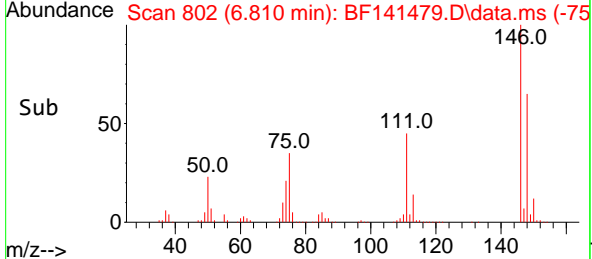
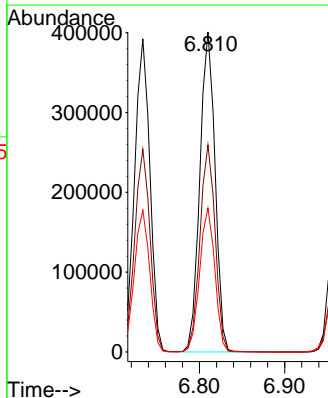
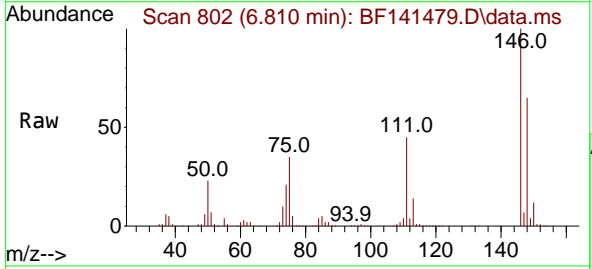
Ion	Ratio	Lower	Upper
146	100		
148	64.7	51.9	77.9
75	33.7	28.2	42.2

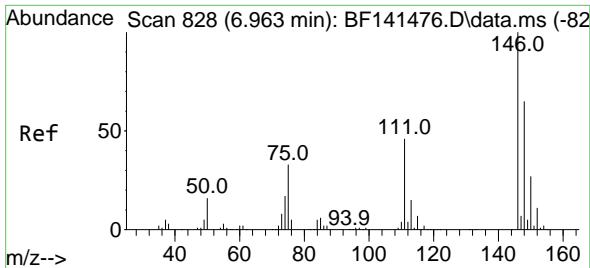


#13
 1,4-Dichlorobenzene
 Concen: 74.175 ng
 RT: 6.810 min Scan# 802
 Delta R.T. 0.000 min
 Lab File: BF141479.D
 Acq: 06 Feb 2025 14:14

Tgt Ion:146 Resp: 498585

Ion	Ratio	Lower	Upper
146	100		
148	64.7	50.9	76.3
111	44.9	35.9	53.9

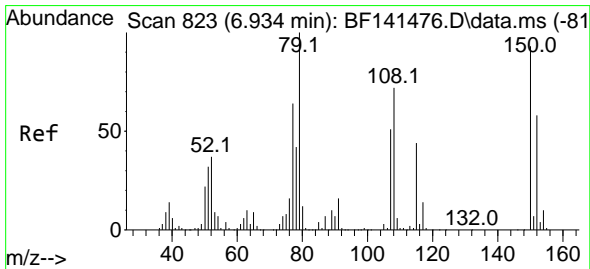
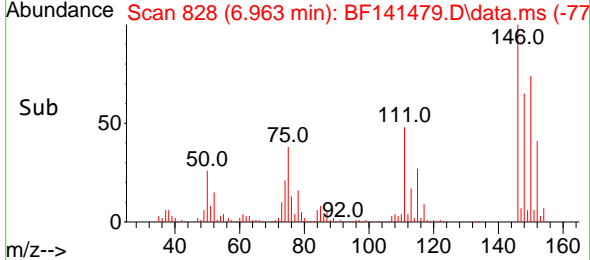
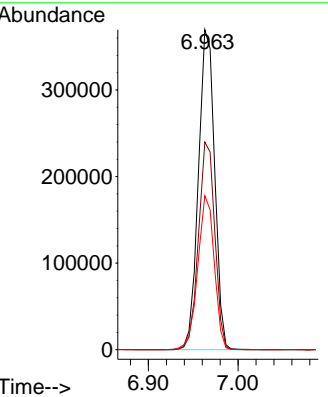
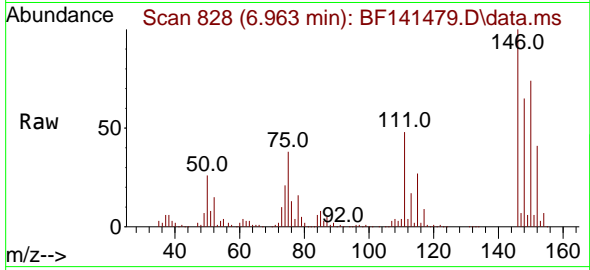




#14
 1,2-Dichlorobenzene
 Concen: 74.465 ng
 RT: 6.963 min Scan# 81
 Delta R.T. 0.000 min
 Lab File: BF141479.D
 Acq: 06 Feb 2025 14:14

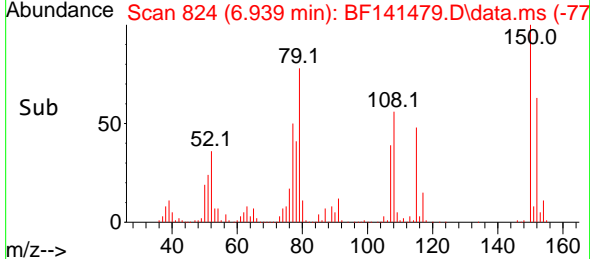
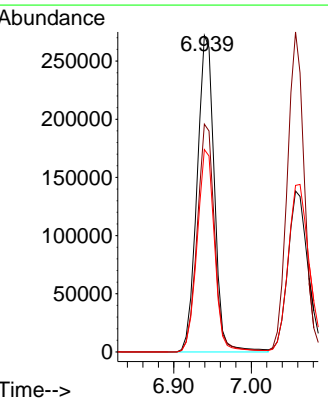
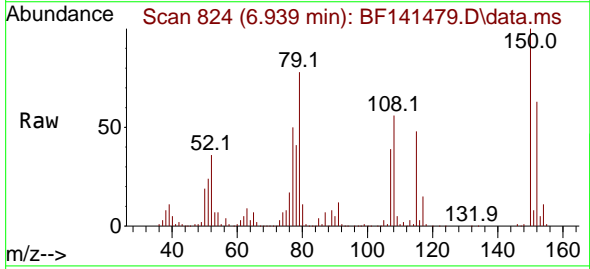
Instrument :
 BNA_F
 ClientSampleId :
 SSTDICC080

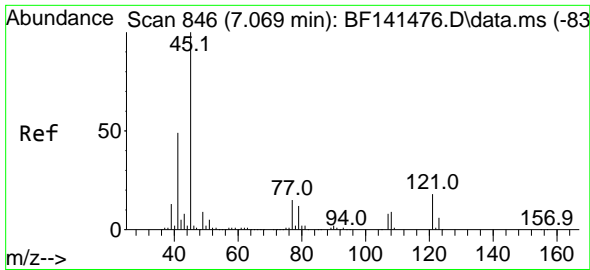
Tgt Ion	Resp	Lower	Upper
146	464559		
148	64.9	51.8	77.6
111	48.1	37.0	55.4



#15
 Benzyl Alcohol
 Concen: 75.258 ng
 RT: 6.939 min Scan# 824
 Delta R.T. 0.000 min
 Lab File: BF141479.D
 Acq: 06 Feb 2025 14:14

Tgt Ion	Resp	Lower	Upper
79	420673		
108	72.0	57.4	86.2
77	64.0	50.9	76.3

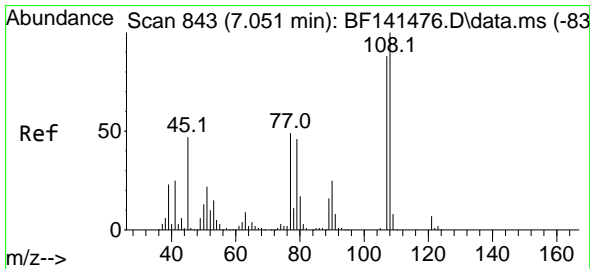
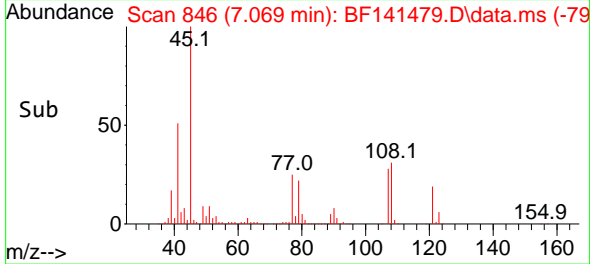
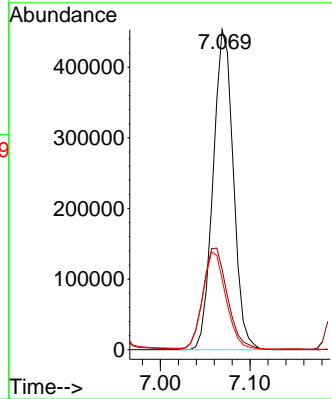
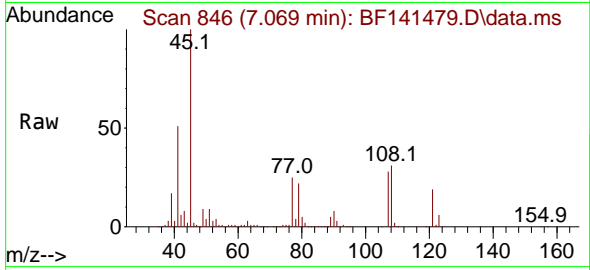




#16
 2,2'-oxybis(1-Chloropropane)
 Concen: 72.613 ng
 RT: 7.069 min Scan# 844
 Delta R.T. 0.000 min
 Lab File: BF141479.D
 Acq: 06 Feb 2025 14:14

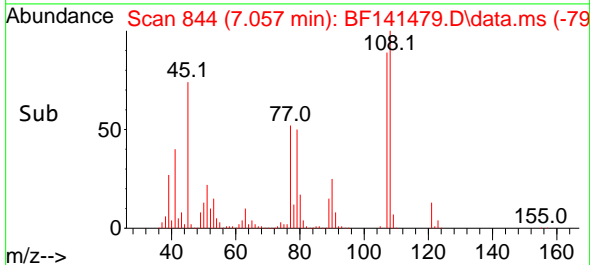
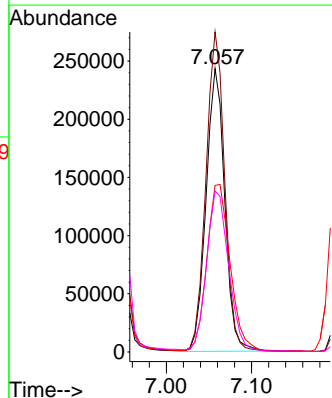
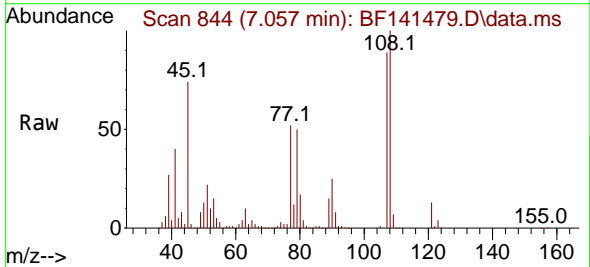
Instrument :
 BNA_F
 ClientSampleId :
 SSTDICC080

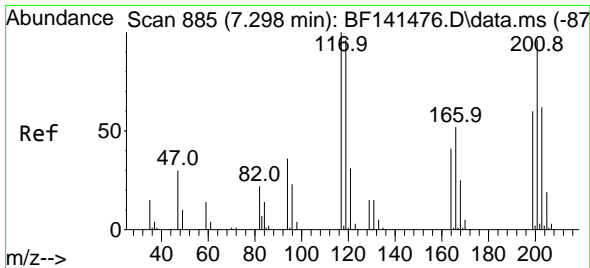
Tgt Ion: 45 Resp: 708318
 Ion Ratio Lower Upper
 45 100
 77 25.1 0.0 35.8
 79 22.0 0.0 32.7



#17
 2-Methylphenol
 Concen: 75.912 ng
 RT: 7.057 min Scan# 844
 Delta R.T. 0.000 min
 Lab File: BF141479.D
 Acq: 06 Feb 2025 14:14

Tgt Ion:107 Resp: 370173
 Ion Ratio Lower Upper
 107 100
 108 112.9 90.6 136.0
 77 58.7 44.4 66.6
 79 56.8 42.3 63.5

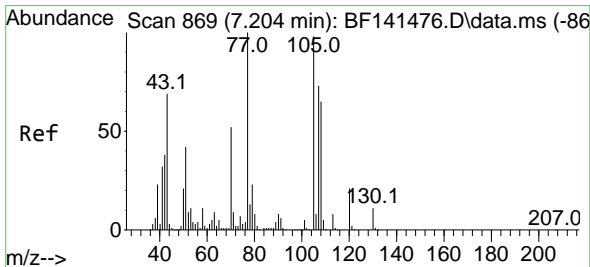
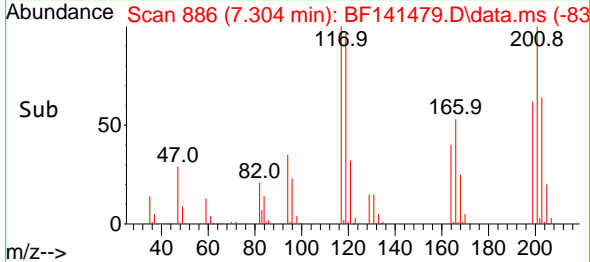
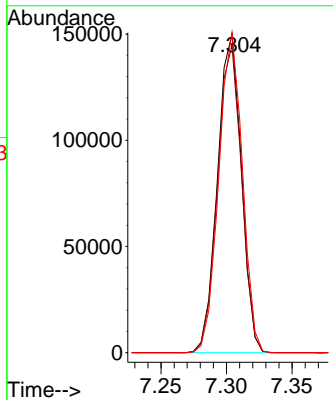
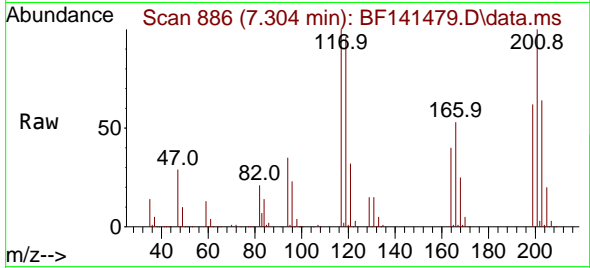




#18
 Hexachloroethane
 Concen: 76.402 ng
 RT: 7.304 min Scan# 811
 Delta R.T. 0.000 min
 Lab File: BF141479.D
 Acq: 06 Feb 2025 14:14

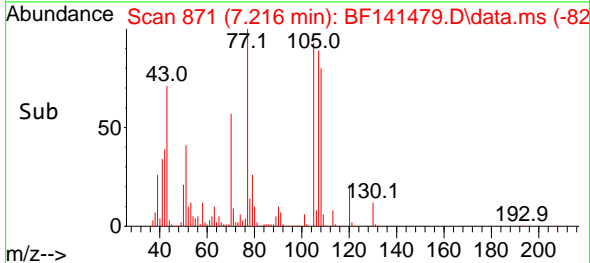
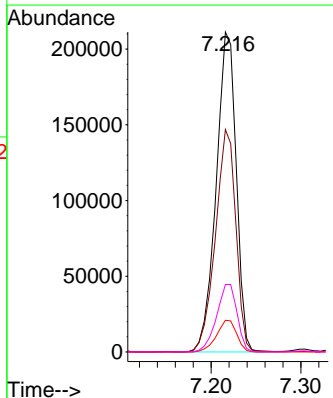
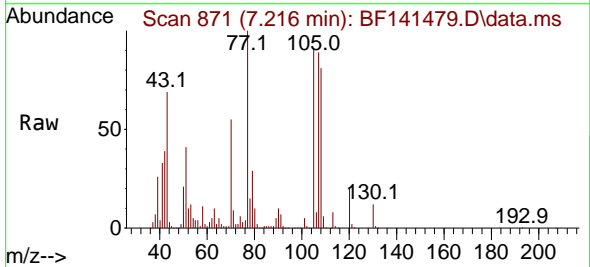
Instrument :
 BNA_F
 ClientSampleId :
 SSTDICC080

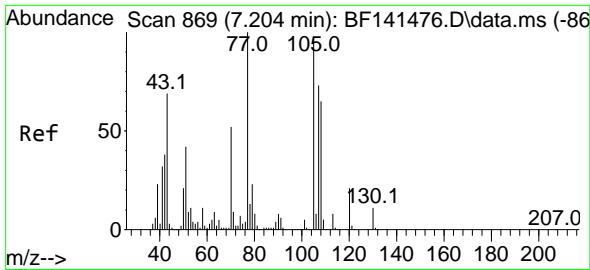
Tgt Ion:117 Resp: 190062
 Ion Ratio Lower Upper
 117 100
 119 96.5 76.5 114.7
 201 100.5 76.7 115.1



#19
 n-Nitroso-di-n-propylamine
 Concen: 75.249 ng
 RT: 7.216 min Scan# 871
 Delta R.T. 0.000 min
 Lab File: BF141479.D
 Acq: 06 Feb 2025 14:14

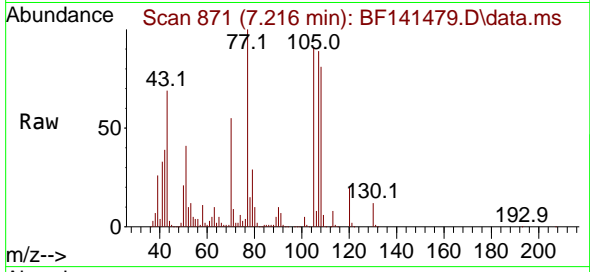
Tgt Ion: 70 Resp: 328097
 Ion Ratio Lower Upper
 70 100
 42 69.5 57.4 86.2
 101 9.9 8.0 12.0
 130 21.1 16.9 25.3



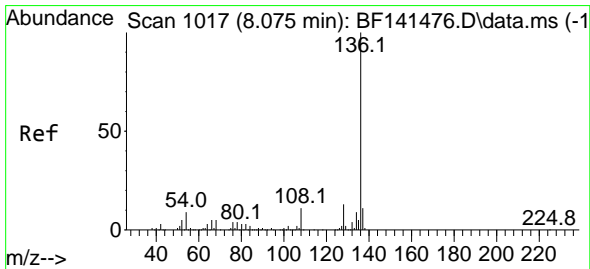
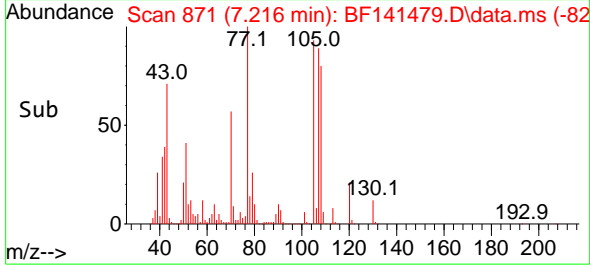
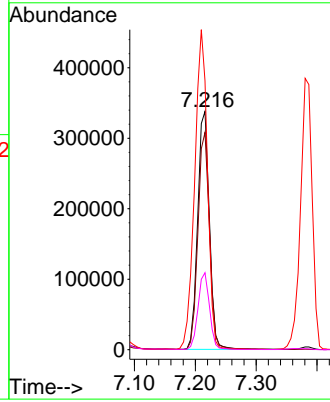


#20
 3+4-Methylphenols
 Concen: 72.613 ng
 RT: 7.216 min Scan# 81
 Delta R.T. 0.000 min
 Lab File: BF141479.D
 Acq: 06 Feb 2025 14:14

Instrument :
 BNA_F
 ClientSampleId :
 SSTDICC080

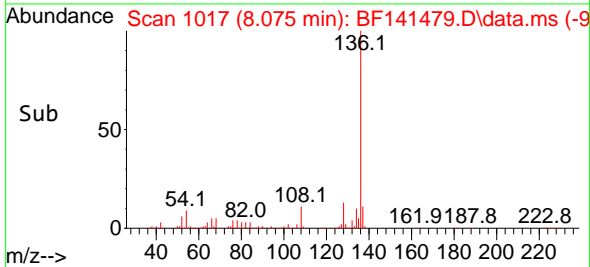
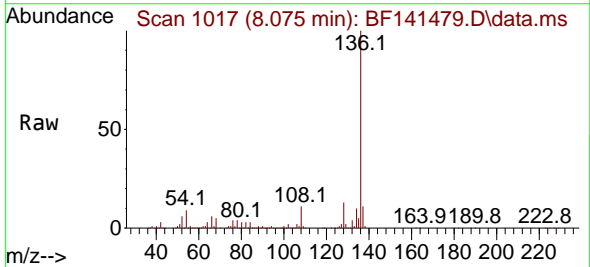
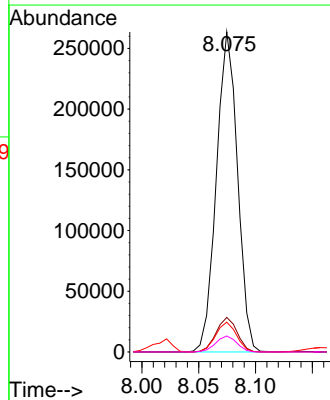


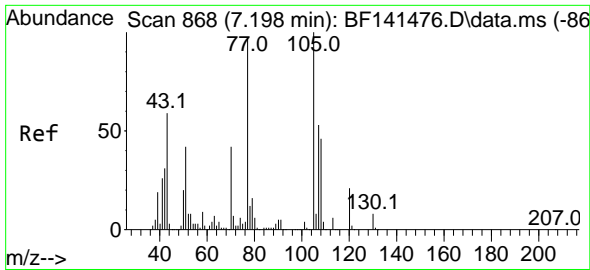
Tgt Ion:107 Resp: 450046
 Ion Ratio Lower Upper
 107 100
 108 91.3 68.5 108.5
 77 112.8 116.5 156.5#
 79 32.3 12.0 52.0



#21
 Naphthalene-d8
 Concen: 20.000 ng
 RT: 8.075 min Scan# 1017
 Delta R.T. 0.000 min
 Lab File: BF141479.D
 Acq: 06 Feb 2025 14:14

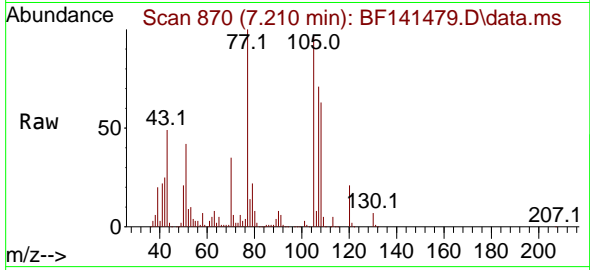
Tgt Ion:136 Resp: 341252
 Ion Ratio Lower Upper
 136 100
 137 10.8 8.6 13.0
 54 9.3 7.2 10.8
 68 5.0 3.7 5.5



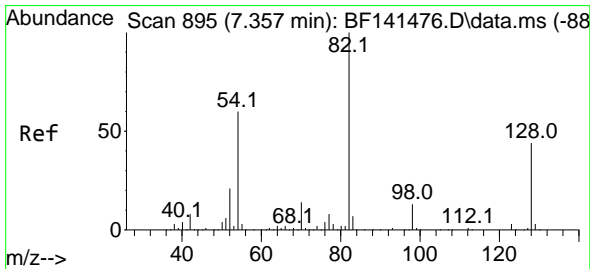
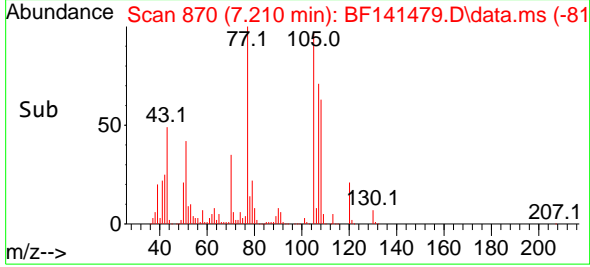
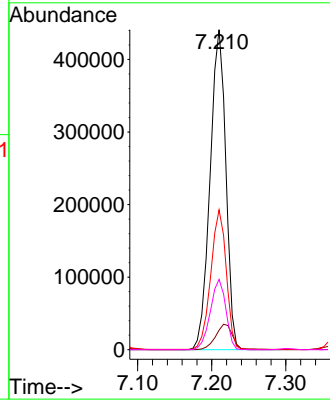


#22
 Acetophenone
 Concen: 76.846 ng
 RT: 7.210 min Scan# 81
 Delta R.T. 0.000 min
 Lab File: BF141479.D
 Acq: 06 Feb 2025 14:14

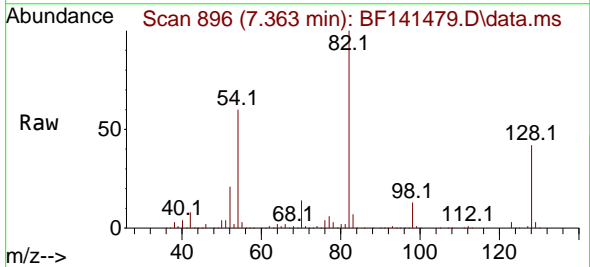
Instrument :
 BNA_F
 ClientSampleId :
 SSTDICC080



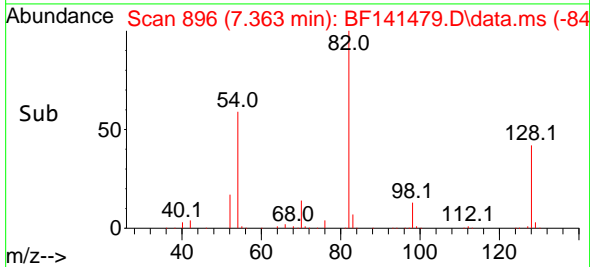
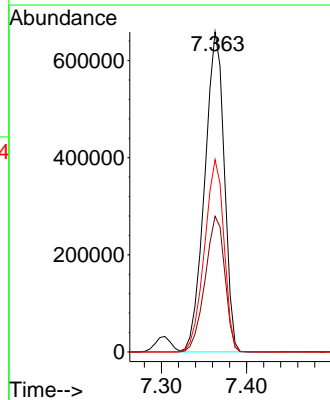
Tgt Ion:105 Resp: 652334
 Ion Ratio Lower Upper
 105 100
 71 6.1 5.7 8.5
 51 43.7 33.7 50.5
 120 22.0 17.0 25.6

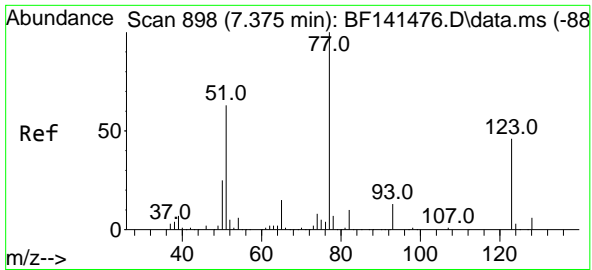


#23
 Nitrobenzene-d5
 Concen: 160.228 ng
 RT: 7.363 min Scan# 896
 Delta R.T. 0.000 min
 Lab File: BF141479.D
 Acq: 06 Feb 2025 14:14



Tgt Ion: 82 Resp: 1048314
 Ion Ratio Lower Upper
 82 100
 128 42.4 34.8 52.2
 54 60.1 48.2 72.4



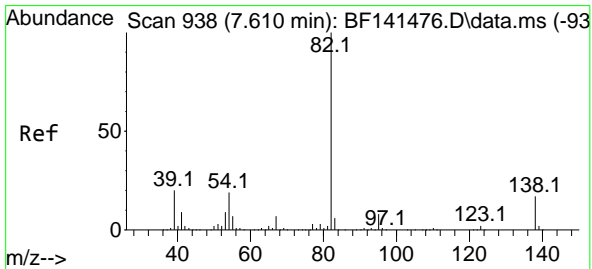
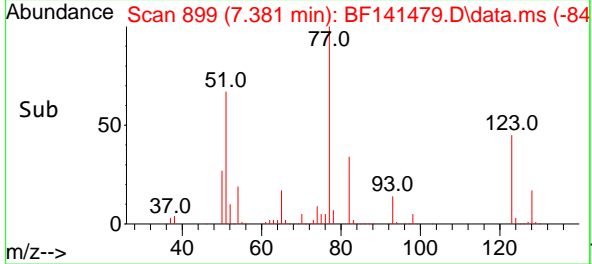
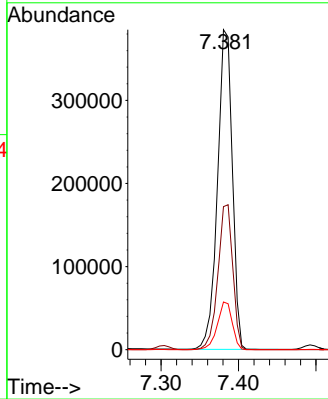
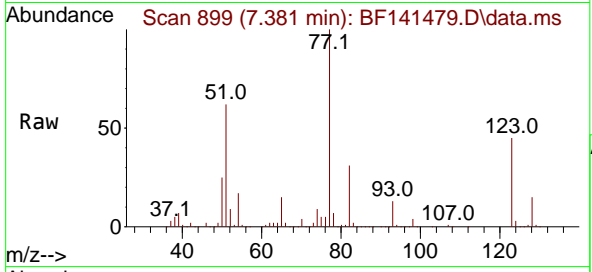


#24
 Nitrobenzene
 Concen: 80.448 ng
 RT: 7.381 min Scan# 899
 Delta R.T. 0.000 min
 Lab File: BF141479.D
 Acq: 06 Feb 2025 14:14

Instrument :
 BNA_F
 ClientSampleId :
 SSTDICC080

Tgt Ion: 77 Resp: 513249

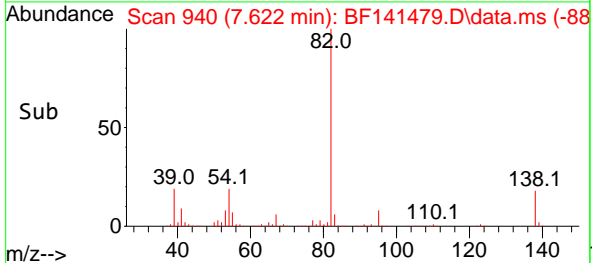
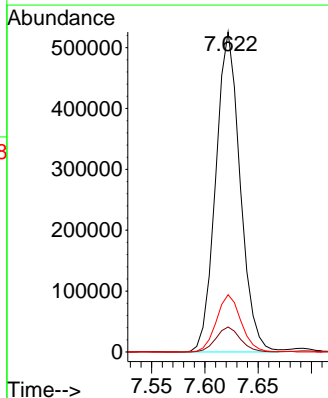
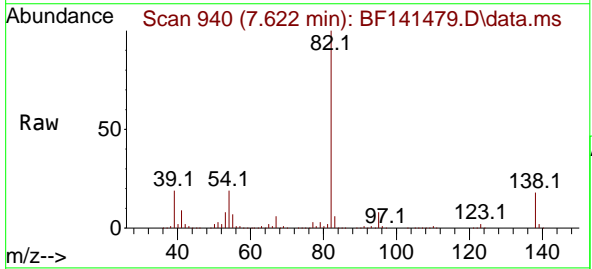
Ion	Ratio	Lower	Upper
77	100		
123	44.7	36.9	55.3
65	14.9	11.9	17.9

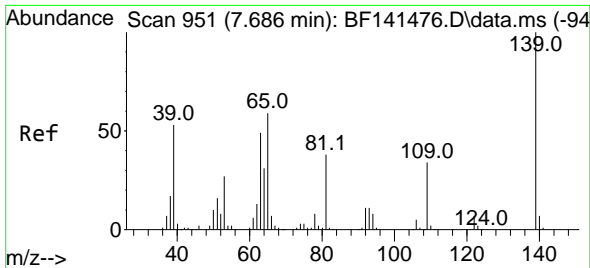


#25
 Isophorone
 Concen: 80.337 ng
 RT: 7.622 min Scan# 940
 Delta R.T. 0.000 min
 Lab File: BF141479.D
 Acq: 06 Feb 2025 14:14

Tgt Ion: 82 Resp: 838076

Ion	Ratio	Lower	Upper
82	100		
95	7.8	6.4	9.6
138	17.9	13.9	20.9



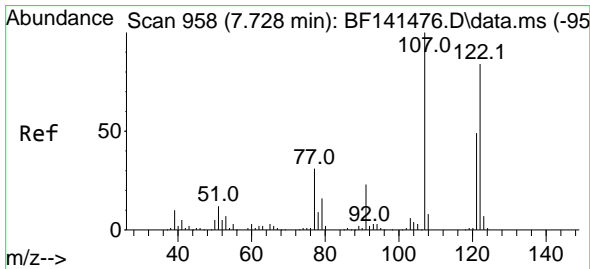
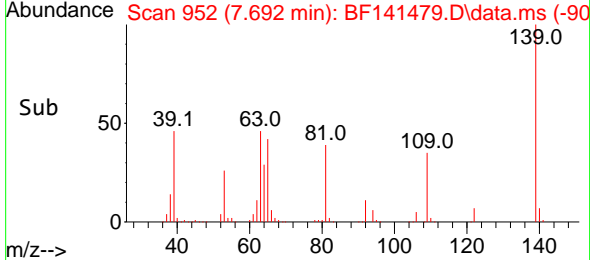
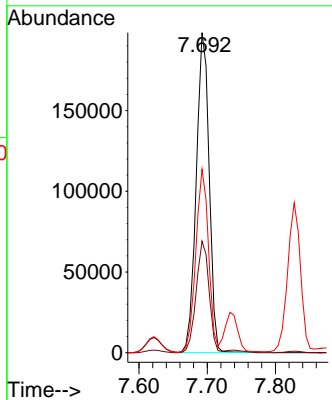
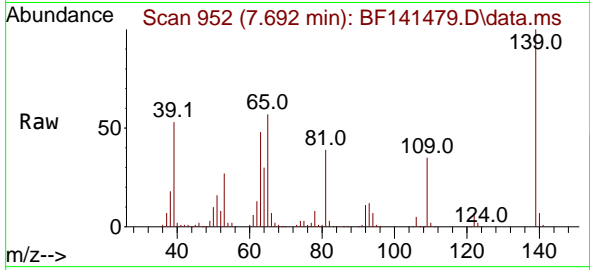


#26
 2-Nitrophenol
 Concen: 82.350 ng
 RT: 7.692 min Scan# 911
 Delta R.T. 0.000 min
 Lab File: BF141479.D
 Acq: 06 Feb 2025 14:14

Instrument : BNA_F
 ClientSampleId : SSTDICC080

Tgt Ion:139 Resp: 261386

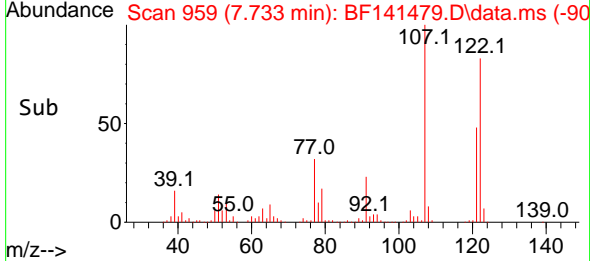
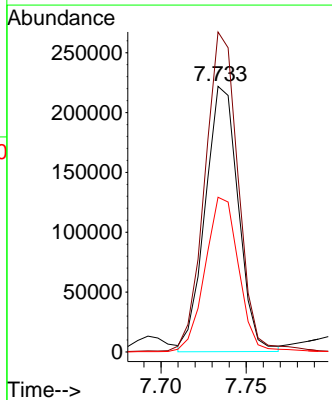
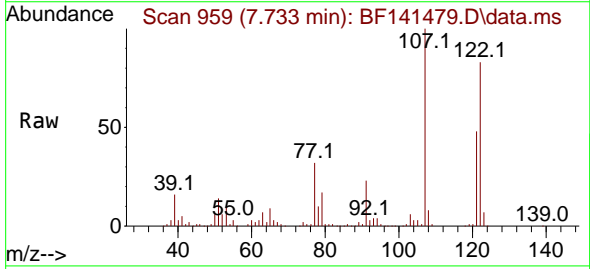
Ion	Ratio	Lower	Upper
139	100		
109	34.9	27.0	40.6
65	57.3	47.1	70.7

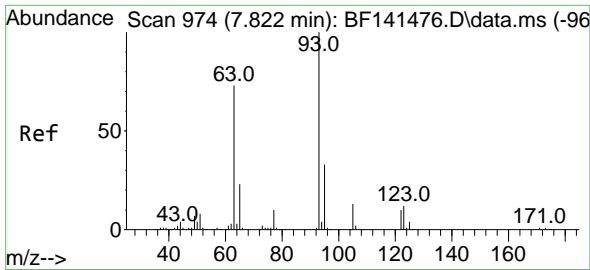


#27
 2,4-Dimethylphenol
 Concen: 80.915 ng
 RT: 7.733 min Scan# 959
 Delta R.T. 0.000 min
 Lab File: BF141479.D
 Acq: 06 Feb 2025 14:14

Tgt Ion:122 Resp: 300036

Ion	Ratio	Lower	Upper
122	100		
107	120.5	94.3	141.5
121	58.3	46.0	69.0



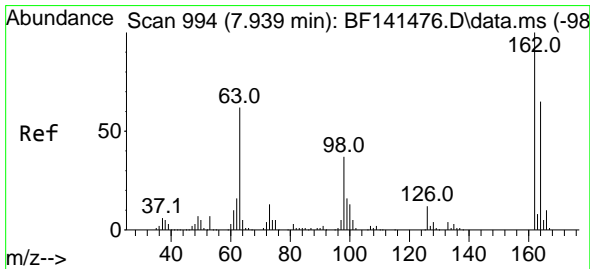
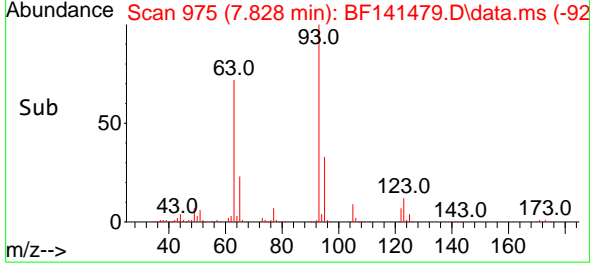
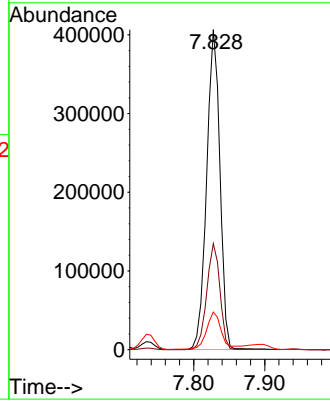
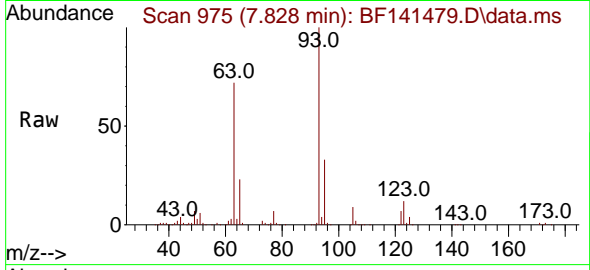


#28
 bis(2-Chloroethoxy)methane
 Concen: 79.203 ng
 RT: 7.828 min Scan# 91
 Delta R.T. 0.000 min
 Lab File: BF141479.D
 Acq: 06 Feb 2025 14:14

Instrument :
 BNA_F
 ClientSampleId :
 SSTDICC080

Tgt Ion: 93 Resp: 529442

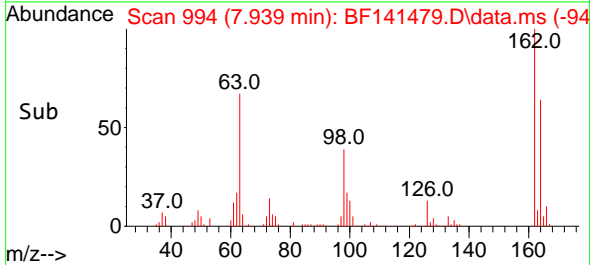
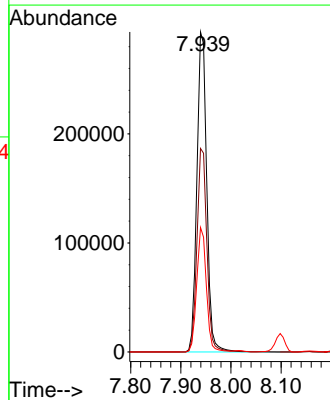
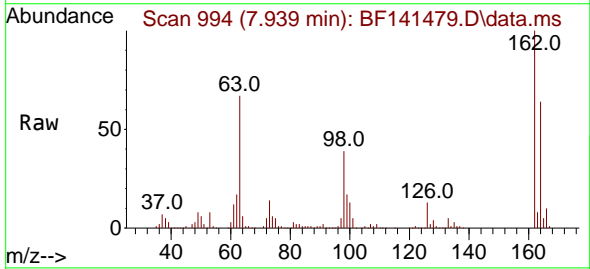
Ion	Ratio	Lower	Upper
93	100		
95	33.2	26.1	39.1
123	11.8	9.5	14.3

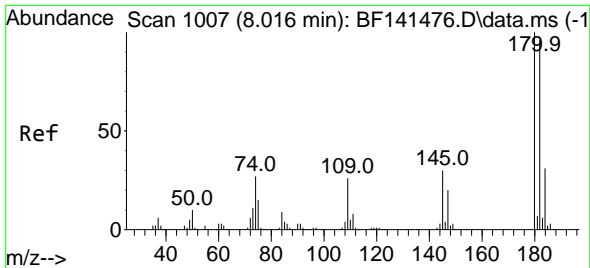


#29
 2,4-Dichlorophenol
 Concen: 79.645 ng
 RT: 7.939 min Scan# 994
 Delta R.T. 0.000 min
 Lab File: BF141479.D
 Acq: 06 Feb 2025 14:14

Tgt Ion: 162 Resp: 399027

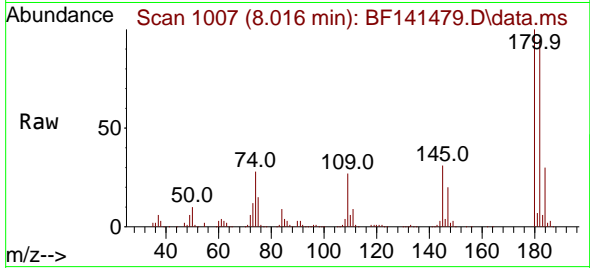
Ion	Ratio	Lower	Upper
162	100		
164	63.6	44.6	84.6
98	38.9	17.2	57.2



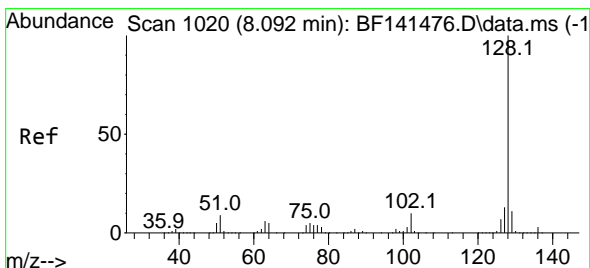
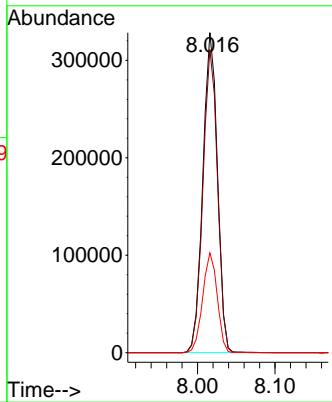
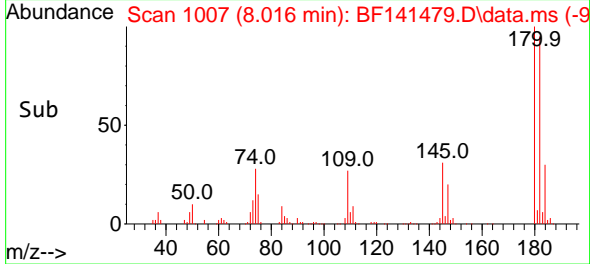


#30
 1,2,4-Trichlorobenzene
 Concen: 78.568 ng
 RT: 8.016 min Scan# 1007
 Delta R.T. 0.000 min
 Lab File: BF141479.D
 Acq: 06 Feb 2025 14:14

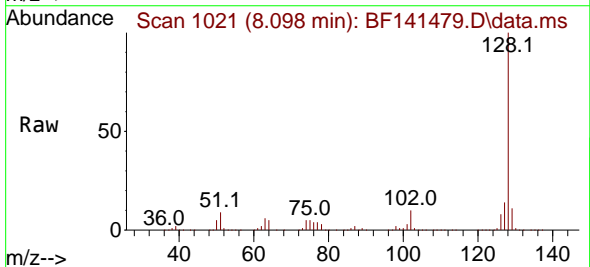
Instrument : BNA_F
 ClientSampleId : SSTDICC080



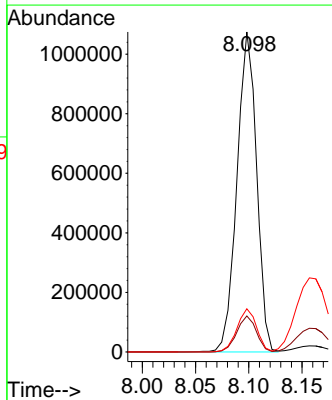
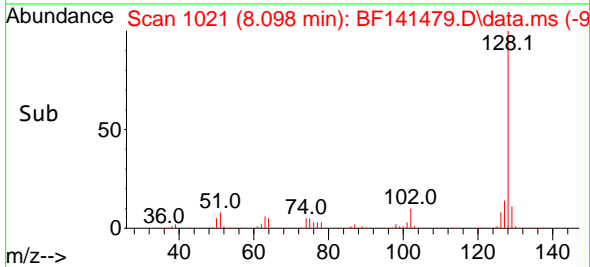
Tgt Ion:180 Resp: 428656
 Ion Ratio Lower Upper
 180 100
 182 94.7 76.8 115.2
 145 31.2 24.2 36.4

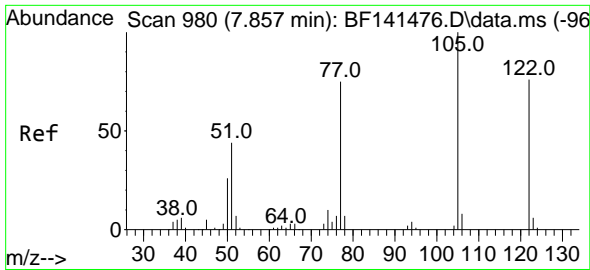


#31
 Naphthalene
 Concen: 77.769 ng
 RT: 8.098 min Scan# 1021
 Delta R.T. 0.000 min
 Lab File: BF141479.D
 Acq: 06 Feb 2025 14:14



Tgt Ion:128 Resp: 1381453
 Ion Ratio Lower Upper
 128 100
 129 11.2 8.9 13.3
 127 13.5 10.7 16.1

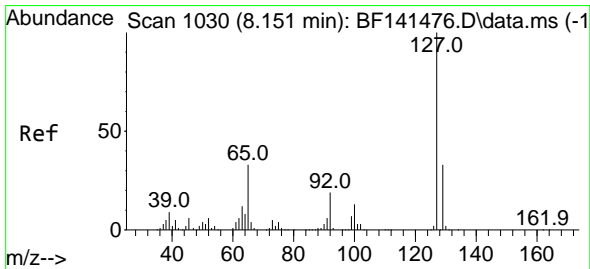
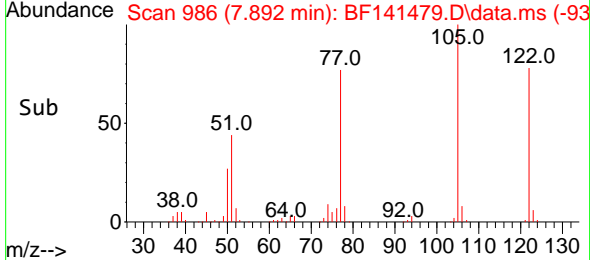
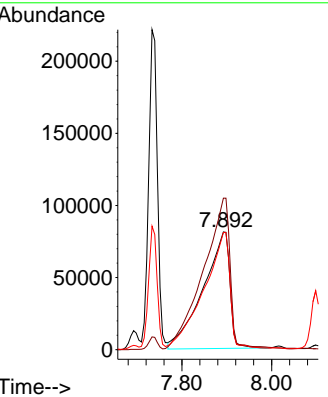
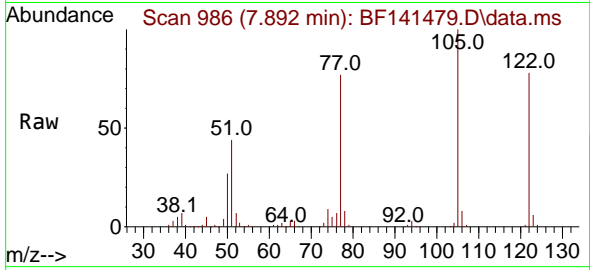




#32
 Benzoic acid
 Concen: 87.086 ng
 RT: 7.892 min Scan# 91
 Delta R.T. 0.000 min
 Lab File: BF141479.D
 Acq: 06 Feb 2025 14:14

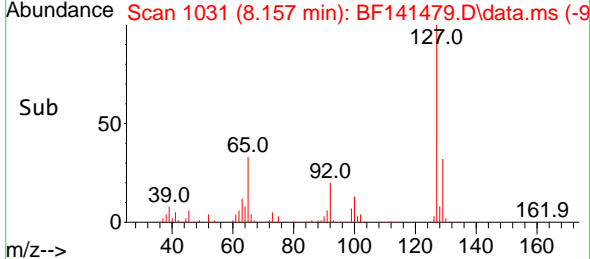
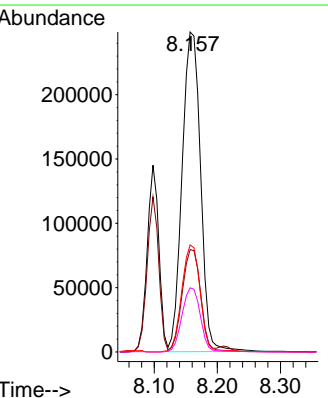
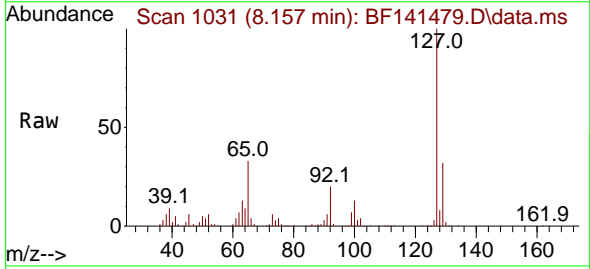
Instrument :
 BNA_F
 ClientSampleId :
 SSTDICC080

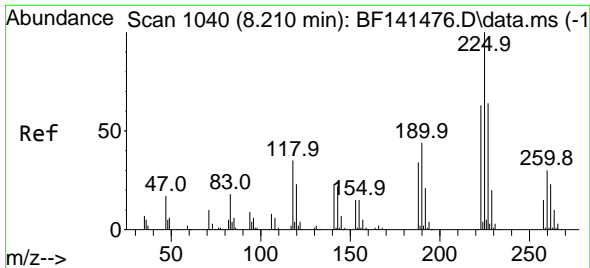
Tgt Ion:122 Resp: 335418
 Ion Ratio Lower Upper
 122 100
 105 128.7 106.5 146.5
 77 99.4 76.3 116.3



#33
 4-Chloroaniline
 Concen: 81.400 ng
 RT: 8.157 min Scan# 1031
 Delta R.T. 0.000 min
 Lab File: BF141479.D
 Acq: 06 Feb 2025 14:14

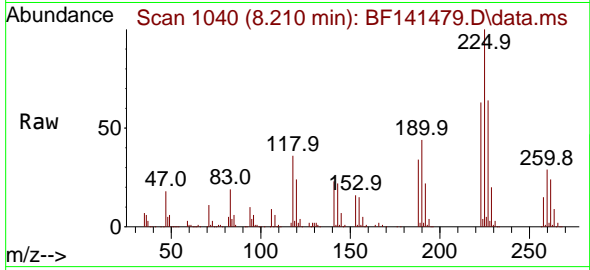
Tgt Ion:127 Resp: 504834
 Ion Ratio Lower Upper
 127 100
 129 32.0 26.5 39.7
 65 33.5 26.4 39.6
 92 20.1 15.3 22.9



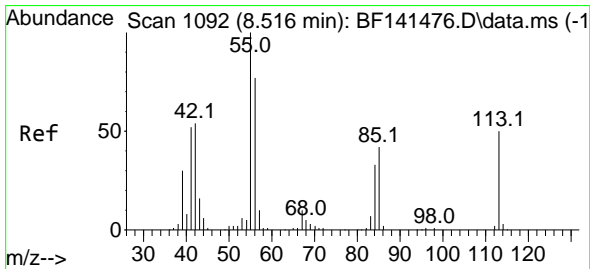
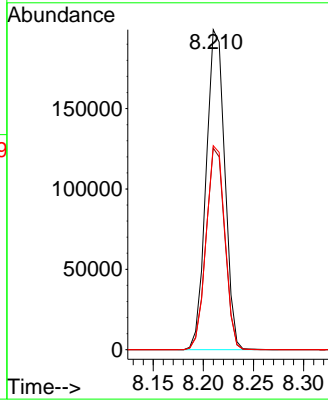
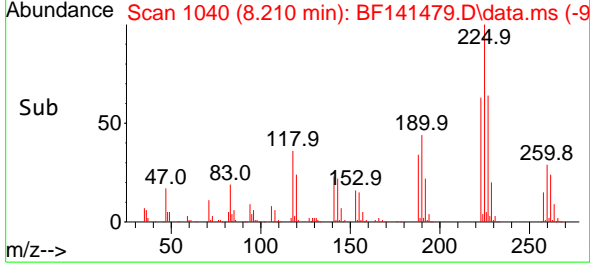


#34
 Hexachlorobutadiene
 Concen: 78.628 ng
 RT: 8.210 min Scan# 1040
 Delta R.T. 0.000 min
 Lab File: BF141479.D
 Acq: 06 Feb 2025 14:14

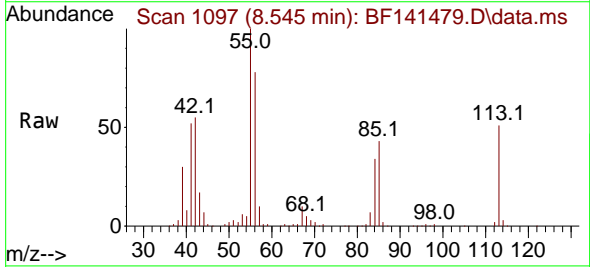
Instrument : BNA_F
 ClientSampleId : SSTDICC080



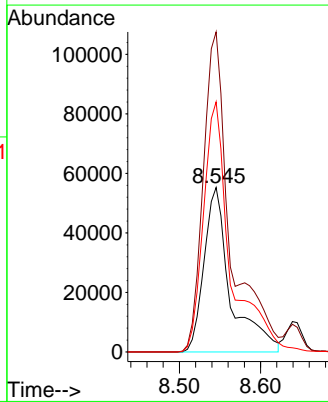
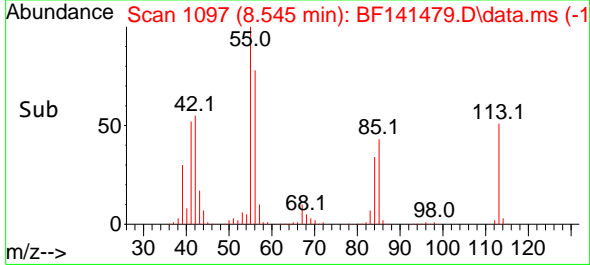
Tgt Ion:225 Resp: 257532
 Ion Ratio Lower Upper
 225 100
 223 63.0 50.1 75.1
 227 63.8 51.0 76.6

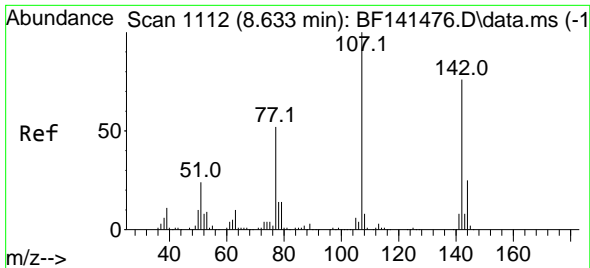


#35
 Caprolactam
 Concen: 82.350 ng
 RT: 8.545 min Scan# 1097
 Delta R.T. 0.000 min
 Lab File: BF141479.D
 Acq: 06 Feb 2025 14:14



Tgt Ion:113 Resp: 125619
 Ion Ratio Lower Upper
 113 100
 55 194.6 180.8 220.8
 56 152.1 133.6 173.6



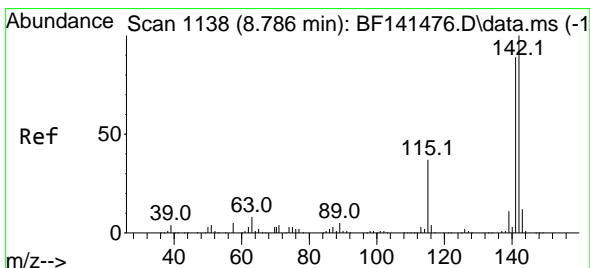
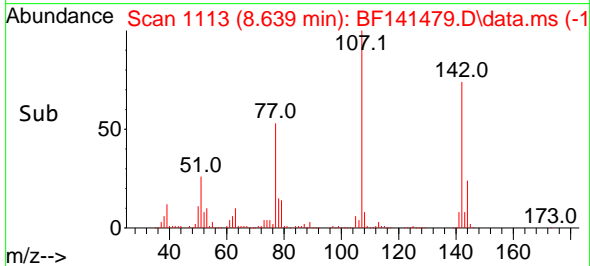
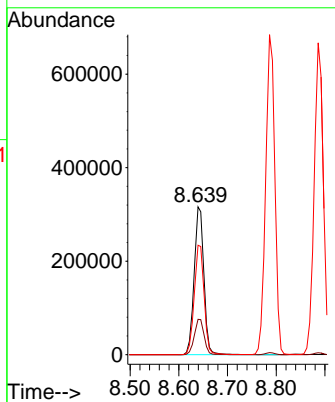
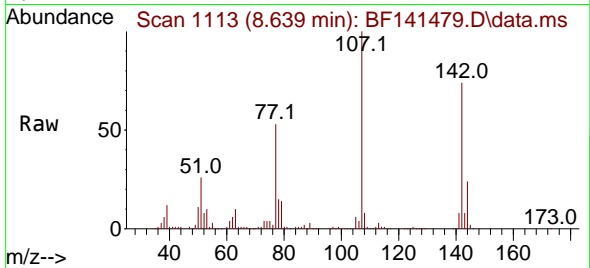


#36
 4-Chloro-3-methylphenol
 Concen: 79.630 ng
 RT: 8.639 min Scan# 1112
 Delta R.T. 0.000 min
 Lab File: BF141479.D
 Acq: 06 Feb 2025 14:14

Instrument : BNA_F
 ClientSampleId : SSTDICC080

Tgt Ion:107 Resp: 441925

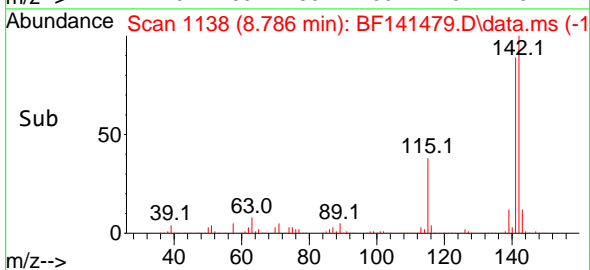
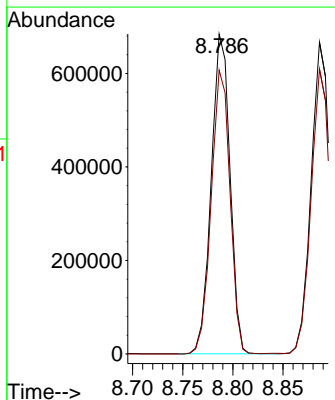
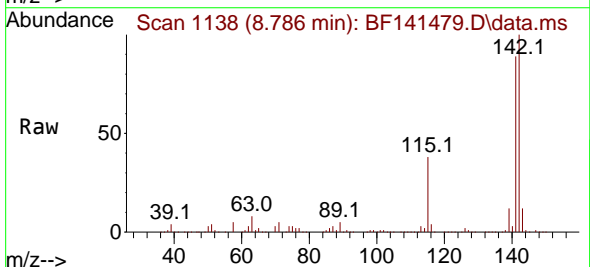
Ion	Ratio	Lower	Upper
107	100		
144	23.9	19.7	29.5
142	74.0	60.8	91.2

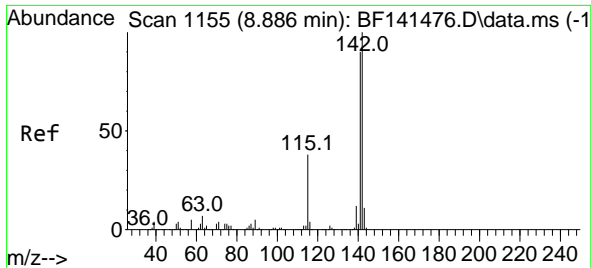


#37
 2-Methylnaphthalene
 Concen: 76.975 ng
 RT: 8.786 min Scan# 1138
 Delta R.T. 0.000 min
 Lab File: BF141479.D
 Acq: 06 Feb 2025 14:14

Tgt Ion:142 Resp: 889774

Ion	Ratio	Lower	Upper
142	100		
141	88.7	71.2	106.8





#38
 1-Methylnaphthalene
 Concen: 76.983 ng
 RT: 8.886 min Scan# 1155
 Delta R.T. 0.000 min
 Lab File: BF141479.D
 Acq: 06 Feb 2025 14:14

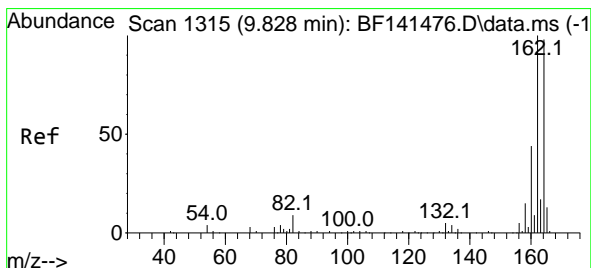
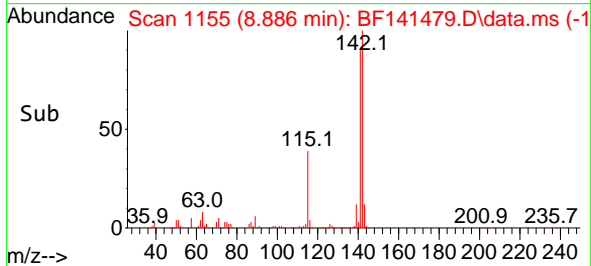
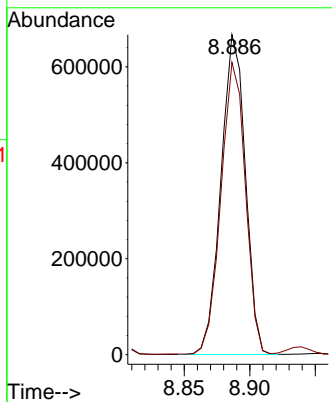
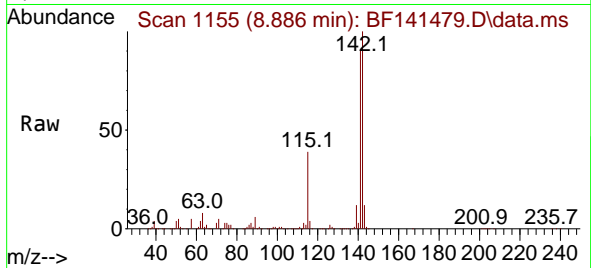
Instrument :

BNA_F

ClientSampleId :

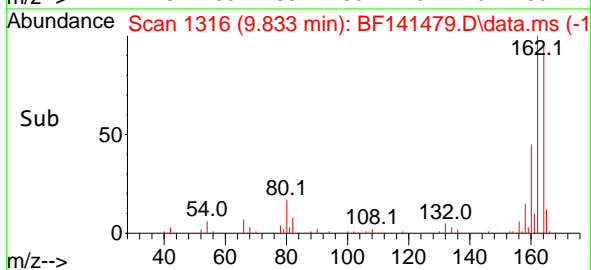
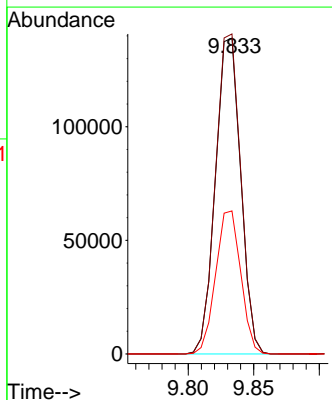
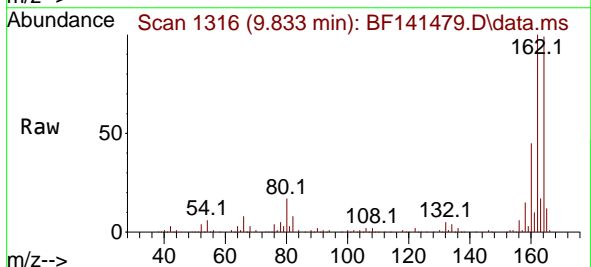
SSTDICC080

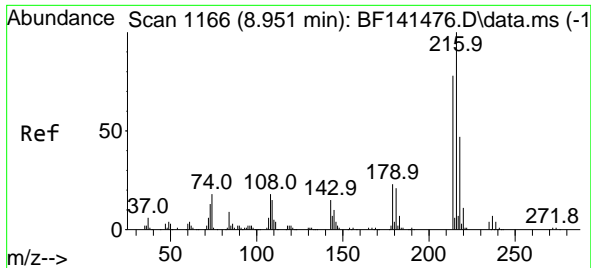
Tgt Ion:142 Resp: 861860
 Ion Ratio Lower Upper
 142 100
 141 91.3 72.1 108.1



#39
 Acenaphthene-d10
 Concen: 20.000 ng
 RT: 9.833 min Scan# 1316
 Delta R.T. 0.000 min
 Lab File: BF141479.D
 Acq: 06 Feb 2025 14:14

Tgt Ion:164 Resp: 186230
 Ion Ratio Lower Upper
 164 100
 162 101.3 81.3 121.9
 160 45.3 35.9 53.9



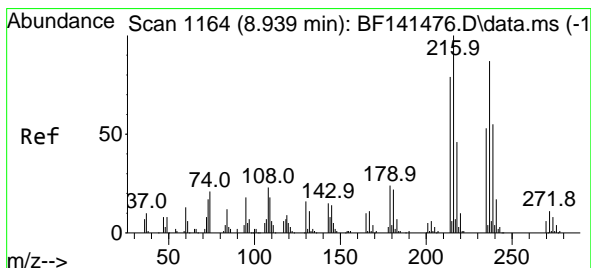
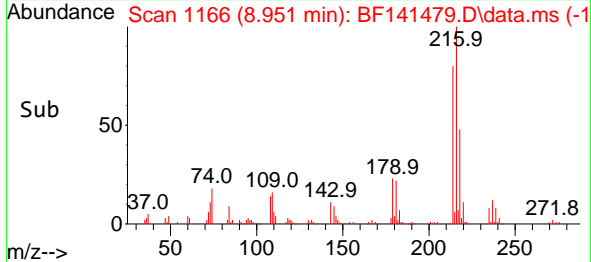
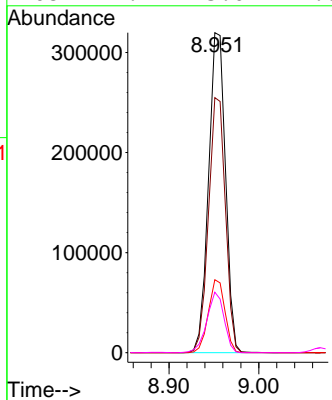
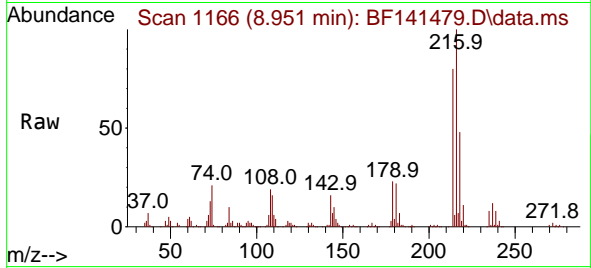


#40
 1,2,4,5-Tetrachlorobenzene
 Concen: 77.689 ng
 RT: 8.951 min Scan# 1166
 Delta R.T. 0.000 min
 Lab File: BF141479.D
 Acq: 06 Feb 2025 14:14

Instrument :
 BNA_F
 ClientSampleId :
 SSTDICC080

Tgt Ion:216 Resp: 418579

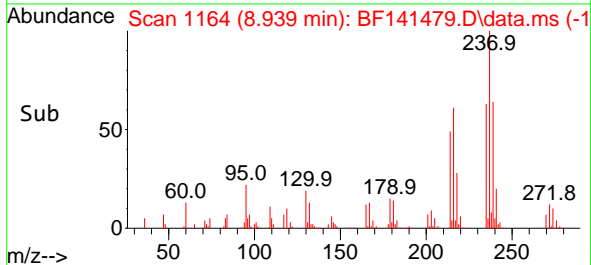
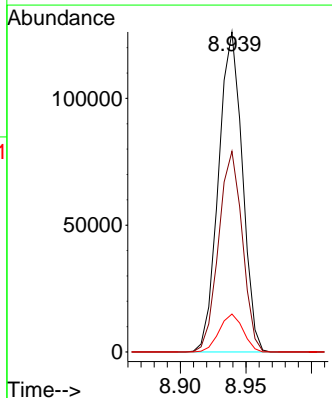
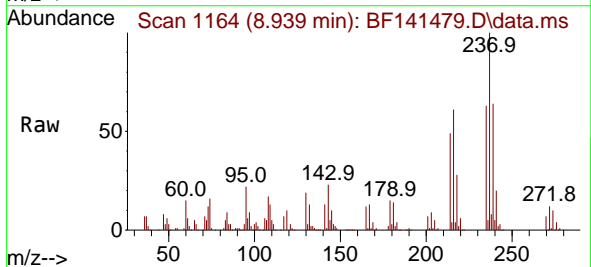
Ion	Ratio	Lower	Upper
216	100		
214	79.6	62.3	93.5
179	22.4	18.0	27.0
108	19.2	15.0	22.6

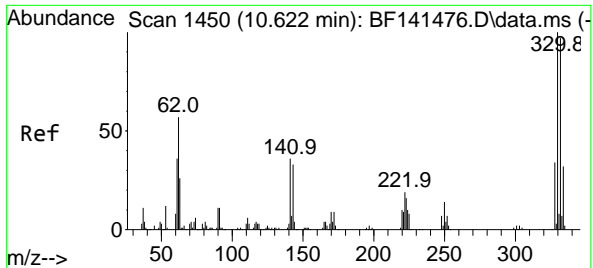


#41
 Hexachlorocyclopentadiene
 Concen: 88.965 ng
 RT: 8.939 min Scan# 1164
 Delta R.T. 0.000 min
 Lab File: BF141479.D
 Acq: 06 Feb 2025 14:14

Tgt Ion:237 Resp: 159430

Ion	Ratio	Lower	Upper
237	100		
235	62.7	41.4	81.4
272	11.9	0.0	32.4

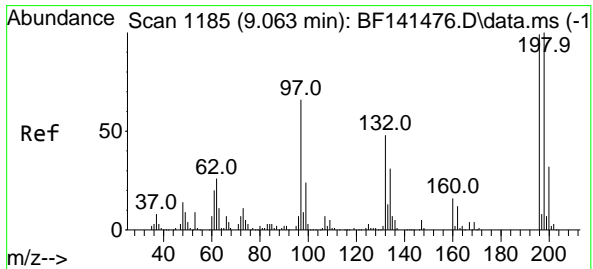
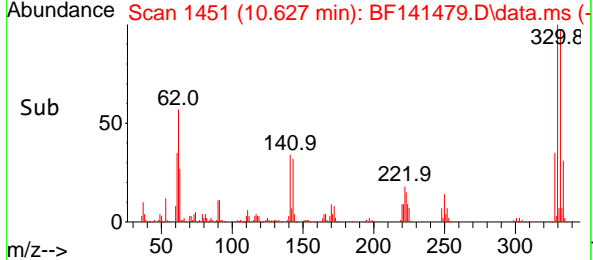
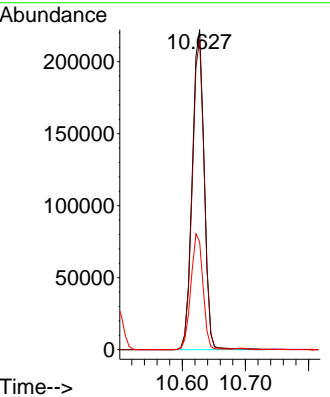
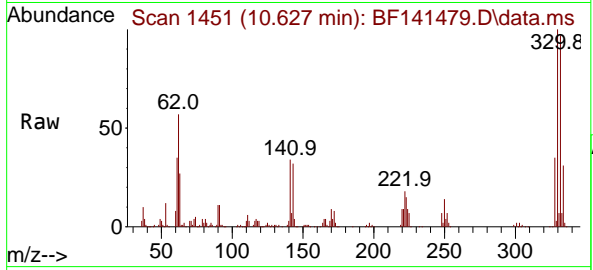




#42
 2,4,6-Tribromophenol
 Concen: 156.058 ng
 RT: 10.627 min Scan# 1451
 Delta R.T. 0.000 min
 Lab File: BF141479.D
 Acq: 06 Feb 2025 14:14

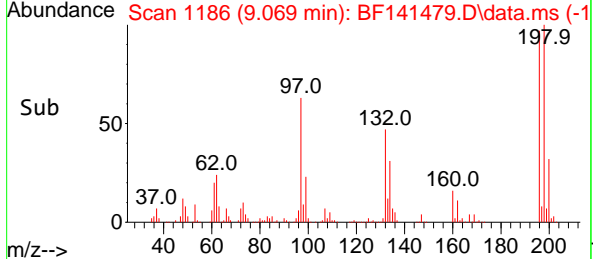
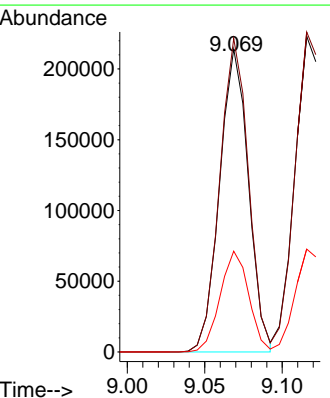
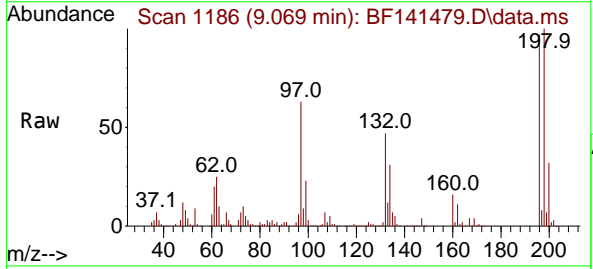
Instrument : BNA_F
 ClientSampleId : SSTDICC080

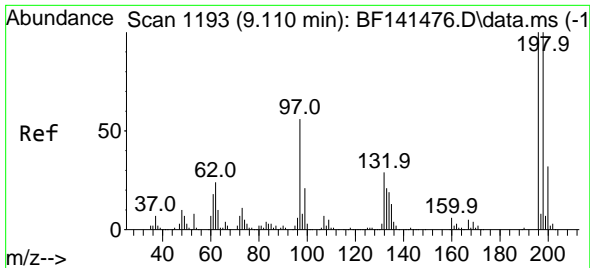
Tgt Ion	Resp	Lower	Upper
330	100		
332	97.2	78.5	117.7
141	36.6	31.0	46.4



#43
 2,4,6-Trichlorophenol
 Concen: 79.591 ng
 RT: 9.069 min Scan# 1186
 Delta R.T. 0.000 min
 Lab File: BF141479.D
 Acq: 06 Feb 2025 14:14

Tgt Ion	Resp	Lower	Upper
196	100		
198	103.5	80.6	121.0
200	33.3	25.5	38.3





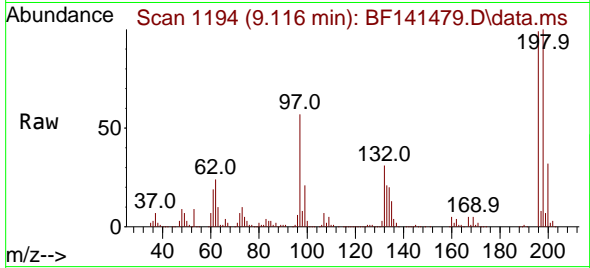
#44
 2,4,5-Trichlorophenol
 Concen: 79.189 ng
 RT: 9.116 min Scan# 1194
 Delta R.T. 0.000 min
 Lab File: BF141479.D
 Acq: 06 Feb 2025 14:14

Instrument :

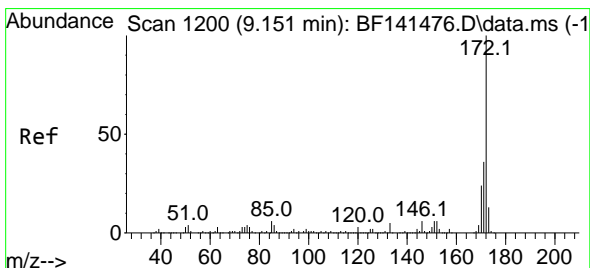
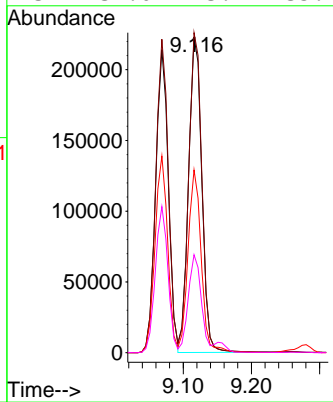
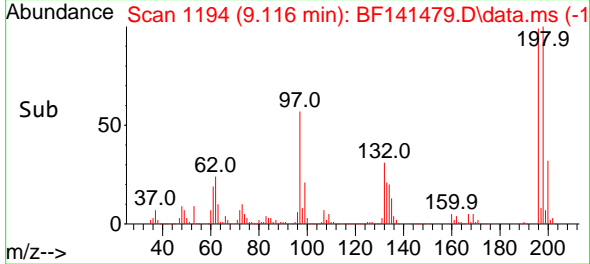
BNA_F

ClientSampleId :

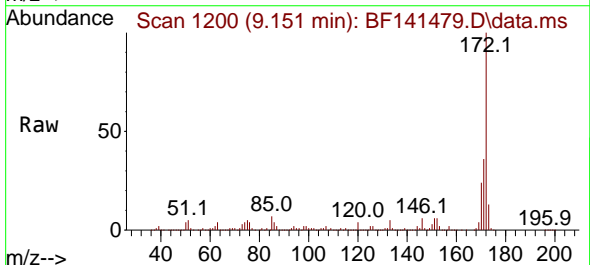
SSTDICC080



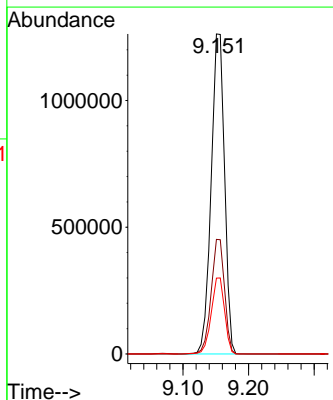
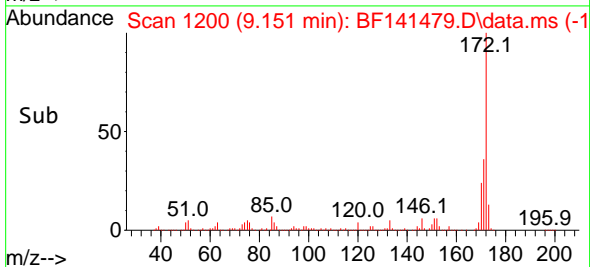
Tgt Ion:196 Resp: 298856
 Ion Ratio Lower Upper
 196 100
 198 101.4 79.8 119.8
 97 57.9 44.8 67.2
 132 31.0 23.9 35.9

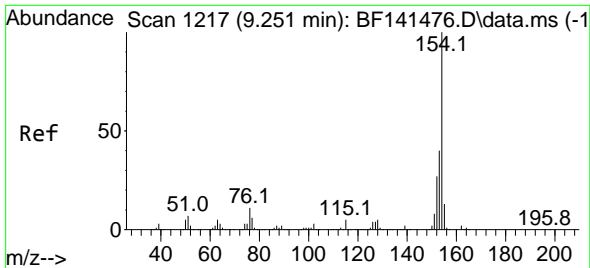


#45
 2-Fluorobiphenyl
 Concen: 148.066 ng
 RT: 9.151 min Scan# 1200
 Delta R.T. 0.000 min
 Lab File: BF141479.D
 Acq: 06 Feb 2025 14:14



Tgt Ion:172 Resp: 1789795
 Ion Ratio Lower Upper
 172 100
 171 35.8 28.7 43.1
 170 23.7 18.9 28.3

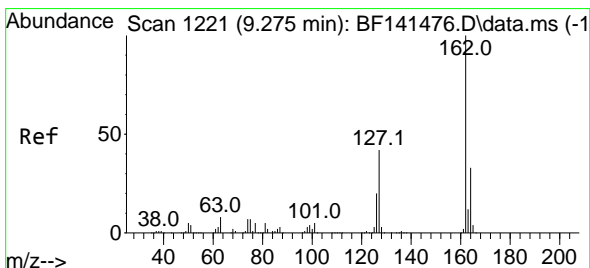
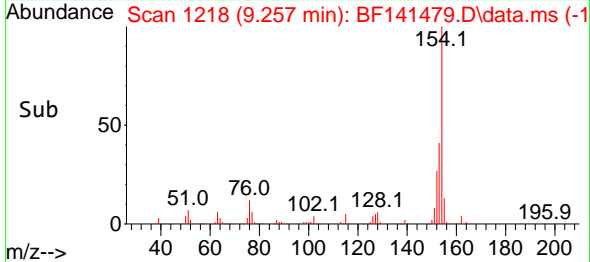
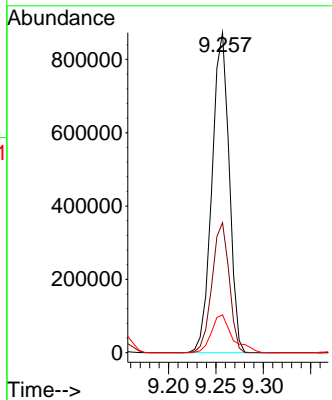
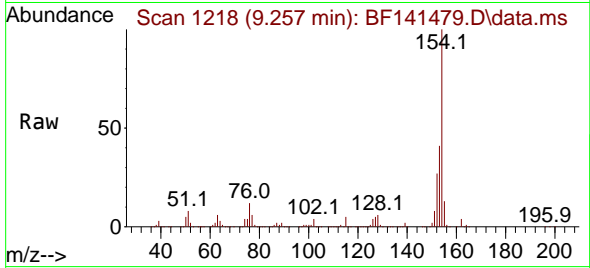




#46
 1,1'-Biphenyl
 Concen: 76.237 ng
 RT: 9.257 min Scan# 11
 Delta R.T. 0.000 min
 Lab File: BF141479.D
 Acq: 06 Feb 2025 14:14

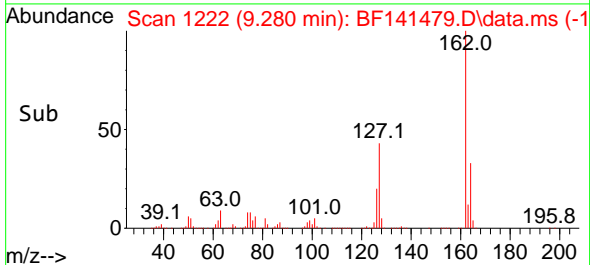
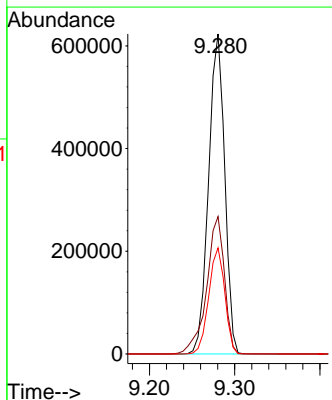
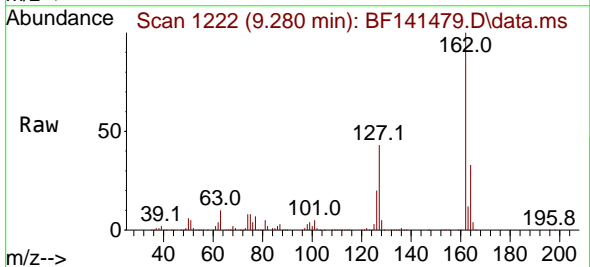
Instrument :
 BNA_F
 ClientSampleId :
 SSTDICC080

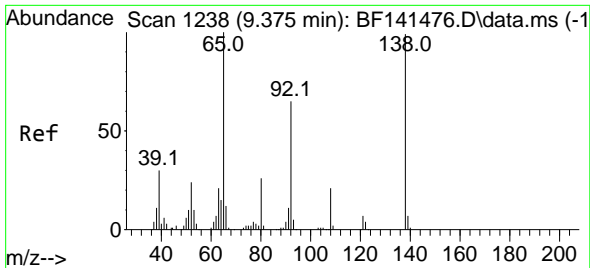
Tgt Ion:154 Resp: 1100720
 Ion Ratio Lower Upper
 154 100
 153 40.7 20.4 60.4
 76 11.8 0.0 30.8



#47
 2-Chloronaphthalene
 Concen: 76.929 ng
 RT: 9.280 min Scan# 1222
 Delta R.T. 0.000 min
 Lab File: BF141479.D
 Acq: 06 Feb 2025 14:14

Tgt Ion:162 Resp: 821334
 Ion Ratio Lower Upper
 162 100
 127 43.0 34.1 51.1
 164 33.2 26.3 39.5



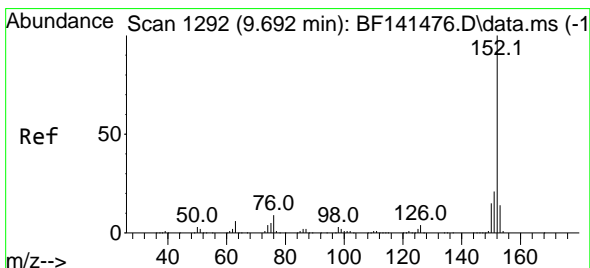
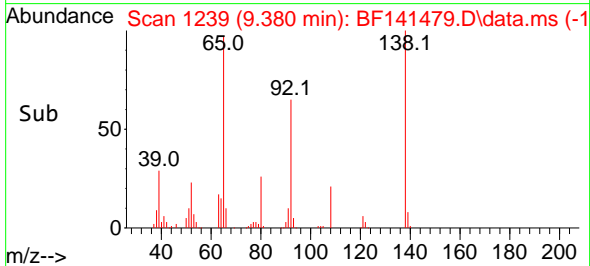
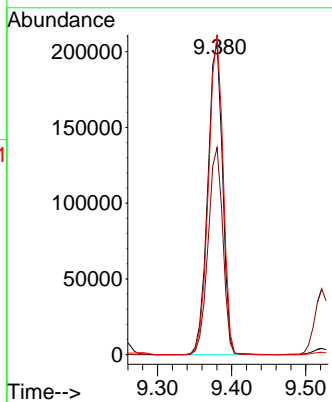
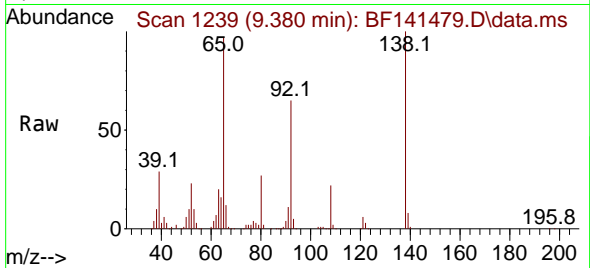


#48
 2-Nitroaniline
 Concen: 79.969 ng
 RT: 9.380 min Scan# 1239
 Delta R.T. 0.000 min
 Lab File: BF141479.D
 Acq: 06 Feb 2025 14:14

Instrument : BNA_F
 ClientSampleId : SSTDICC080

Tgt Ion: 65 Resp: 286532

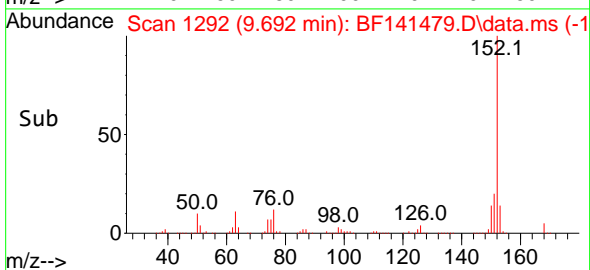
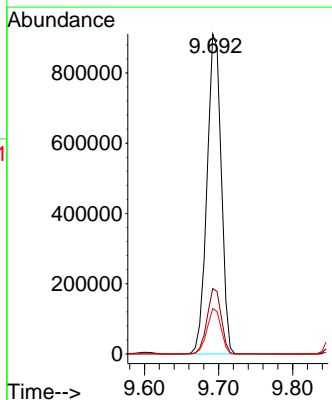
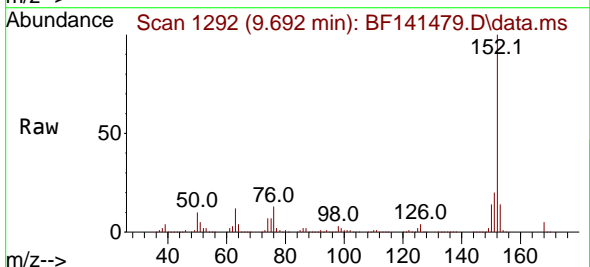
Ion	Ratio	Lower	Upper
65	100		
92	66.4	52.2	78.2
138	102.6	79.5	119.3

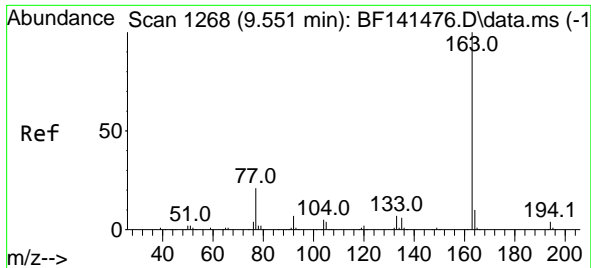


#49
 Acenaphthylene
 Concen: 76.291 ng
 RT: 9.692 min Scan# 1292
 Delta R.T. 0.000 min
 Lab File: BF141479.D
 Acq: 06 Feb 2025 14:14

Tgt Ion: 152 Resp: 1211515

Ion	Ratio	Lower	Upper
152	100		
151	20.4	16.4	24.6
153	14.1	10.9	16.3



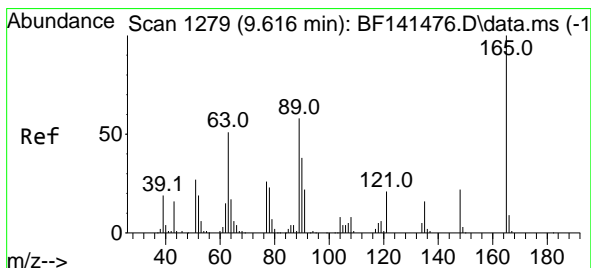
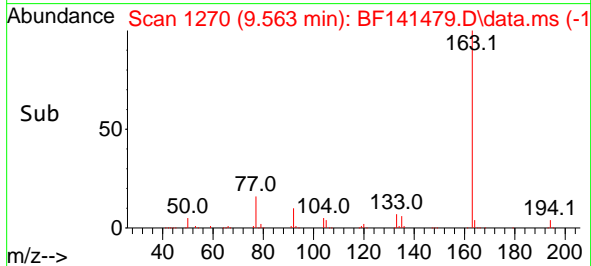
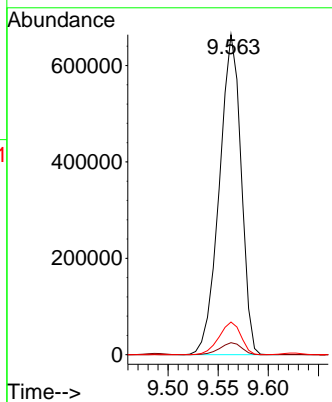
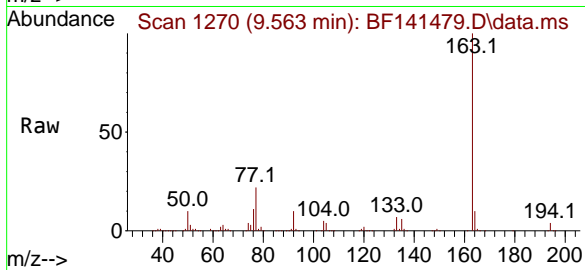


#50
 Dimethylphthalate
 Concen: 79.265 ng
 RT: 9.563 min Scan# 11
 Delta R.T. 0.000 min
 Lab File: BF141479.D
 Acq: 06 Feb 2025 14:14

Instrument : BNA_F
 ClientSampleId : SSTDICC080

Tgt Ion:163 Resp: 1002121

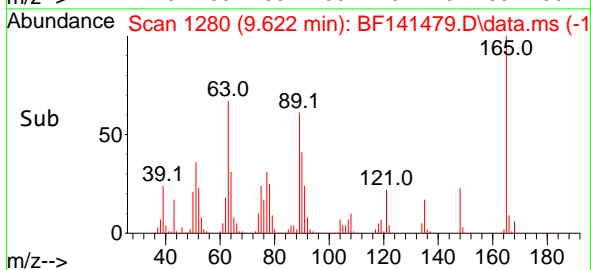
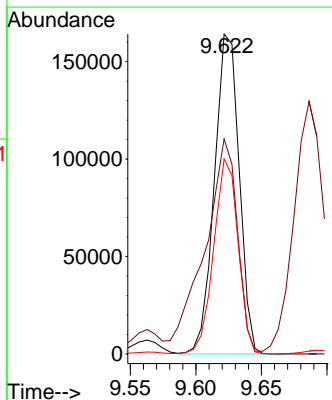
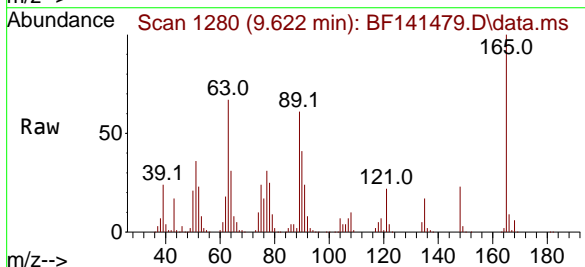
Ion	Ratio	Lower	Upper
163	100		
194	3.8	3.0	4.4
164	10.2	7.9	11.9

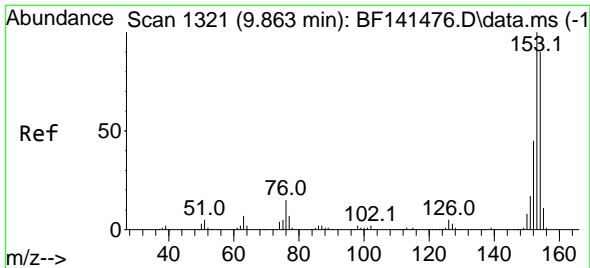


#51
 2,6-Dinitrotoluene
 Concen: 78.101 ng
 RT: 9.622 min Scan# 1280
 Delta R.T. 0.000 min
 Lab File: BF141479.D
 Acq: 06 Feb 2025 14:14

Tgt Ion:165 Resp: 215853

Ion	Ratio	Lower	Upper
165	100		
63	67.2	49.4	74.0
89	60.9	46.5	69.7





#52
 Acenaphthene
 Concen: 76.791 ng
 RT: 9.869 min Scan# 11
 Delta R.T. 0.000 min
 Lab File: BF141479.D
 Acq: 06 Feb 2025 14:14

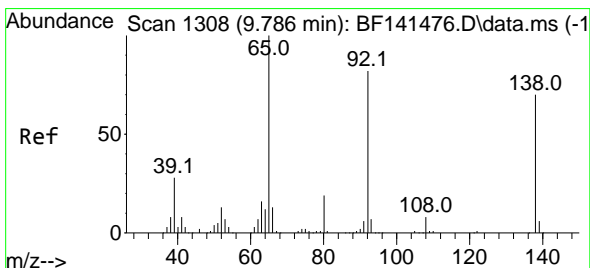
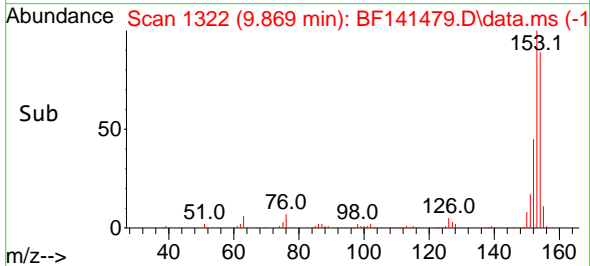
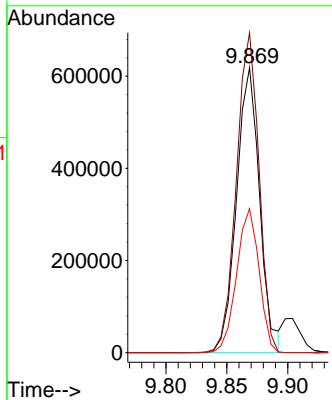
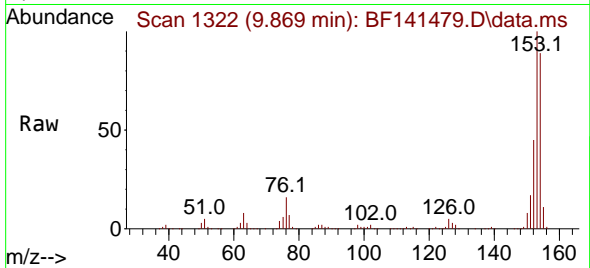
Instrument :

BNA_F

ClientSampleId :

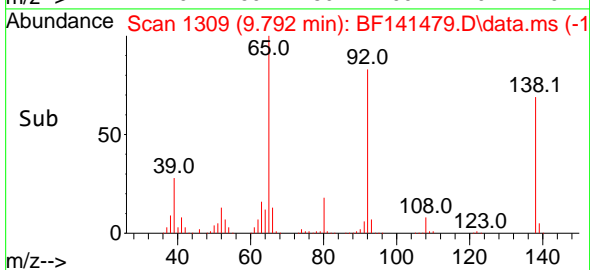
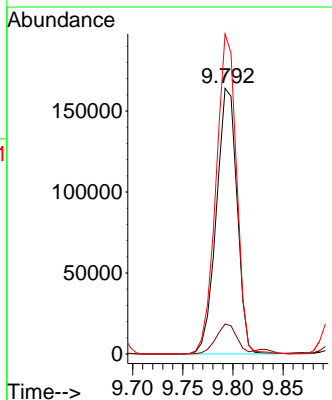
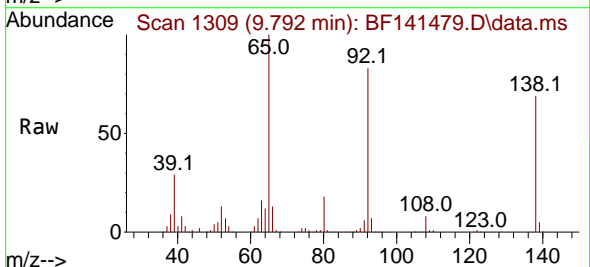
SSTDICC080

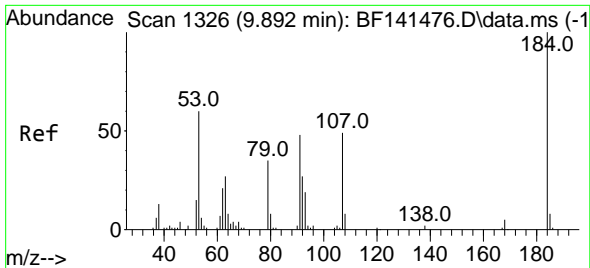
Tgt Ion:154 Resp: 819818
 Ion Ratio Lower Upper
 154 100
 153 112.2 89.2 133.8
 152 50.5 39.8 59.8



#53
 3-Nitroaniline
 Concen: 79.173 ng
 RT: 9.792 min Scan# 1309
 Delta R.T. 0.000 min
 Lab File: BF141479.D
 Acq: 06 Feb 2025 14:14

Tgt Ion:138 Resp: 235511
 Ion Ratio Lower Upper
 138 100
 108 11.3 9.0 13.4
 92 120.4 93.7 140.5



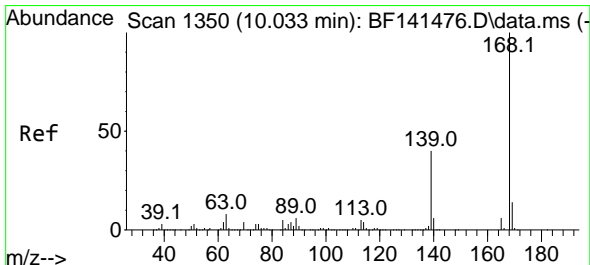
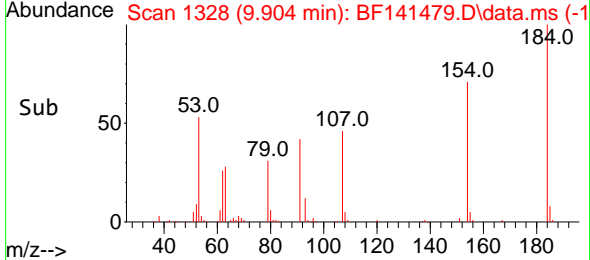
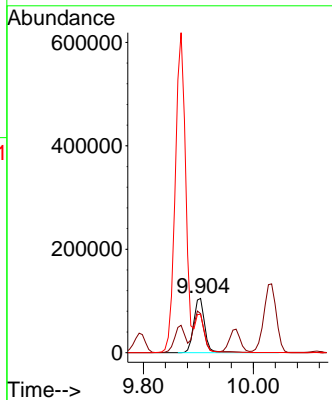
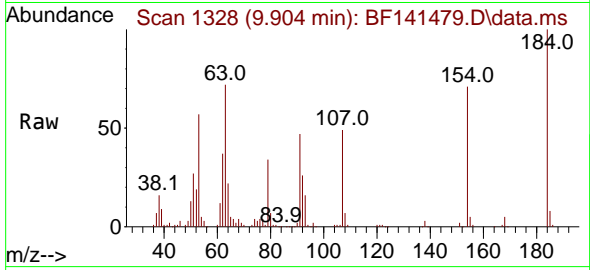


#54
 2,4-Dinitrophenol
 Concen: 89.960 ng
 RT: 9.904 min Scan# 11
 Delta R.T. -0.000 min
 Lab File: BF141479.D
 Acq: 06 Feb 2025 14:14

Instrument : BNA_F
 ClientSampleId : SSTDICC080

Tgt Ion:184 Resp: 147768

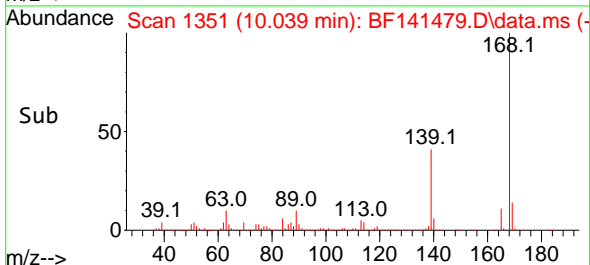
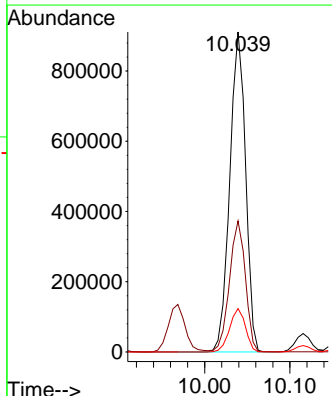
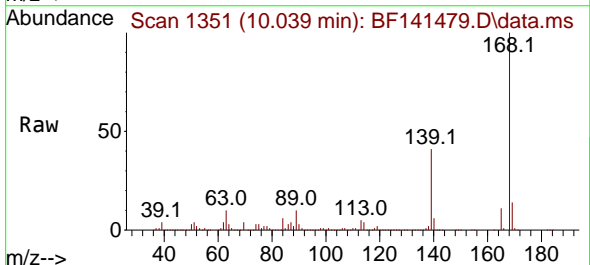
Ion	Ratio	Lower	Upper
184	100		
63	72.1	61.0	91.6
154	70.8	59.9	89.9

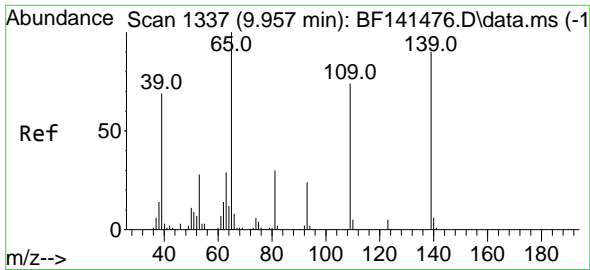


#55
 Dibenzofuran
 Concen: 74.928 ng
 RT: 10.039 min Scan# 1351
 Delta R.T. 0.000 min
 Lab File: BF141479.D
 Acq: 06 Feb 2025 14:14

Tgt Ion:168 Resp: 1174157

Ion	Ratio	Lower	Upper
168	100		
139	40.9	32.7	49.1
169	13.6	10.8	16.2



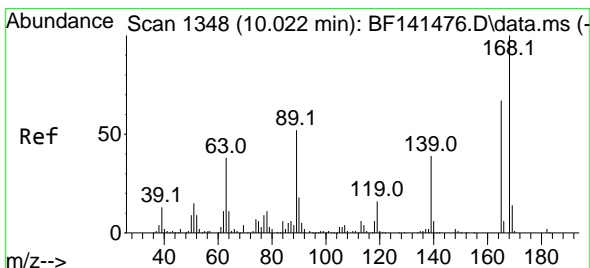
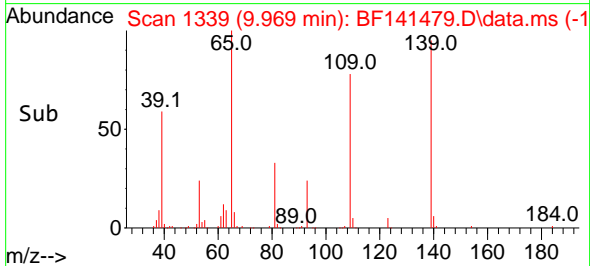
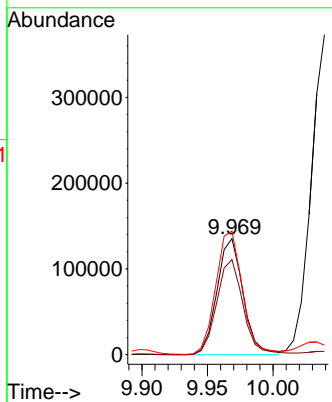
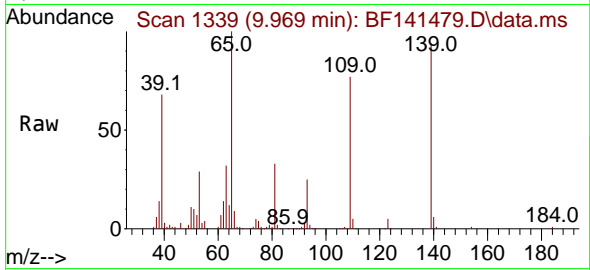


#56
 4-Nitrophenol
 Concen: 84.744 ng
 RT: 9.969 min Scan# 1339
 Delta R.T. -0.000 min
 Lab File: BF141479.D
 Acq: 06 Feb 2025 14:14

Instrument : BNA_F
 ClientSampleId : SSTDICC080

Tgt Ion:139 Resp: 187131

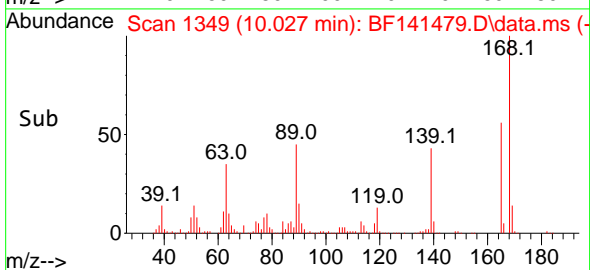
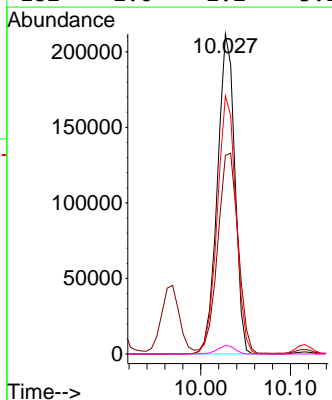
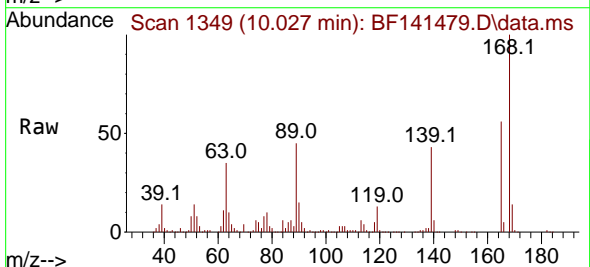
Ion	Ratio	Lower	Upper
139	100		
109	81.9	62.0	102.0
65	106.7	91.2	131.2

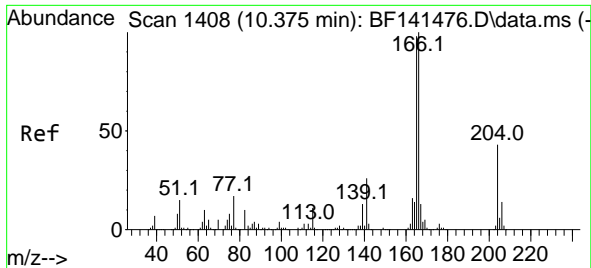


#57
 2,4-Dinitrotoluene
 Concen: 77.449 ng
 RT: 10.027 min Scan# 1349
 Delta R.T. 0.000 min
 Lab File: BF141479.D
 Acq: 06 Feb 2025 14:14

Tgt Ion:165 Resp: 284954

Ion	Ratio	Lower	Upper
165	100		
63	62.1	46.4	69.6
89	80.7	61.8	92.6
182	2.6	2.2	3.2





#58
 Fluorene
 Concen: 75.080 ng
 RT: 10.380 min Scan# 1408
 Delta R.T. 0.000 min
 Lab File: BF141479.D
 Acq: 06 Feb 2025 14:14

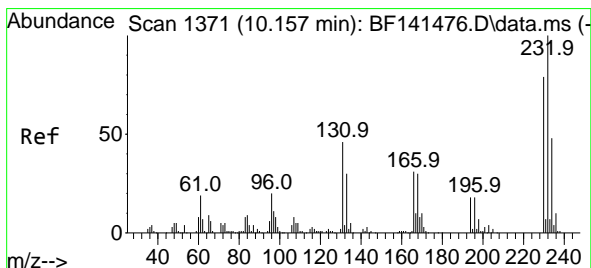
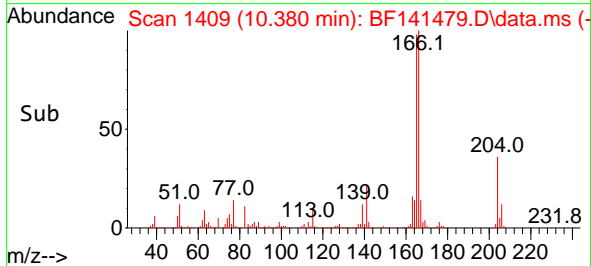
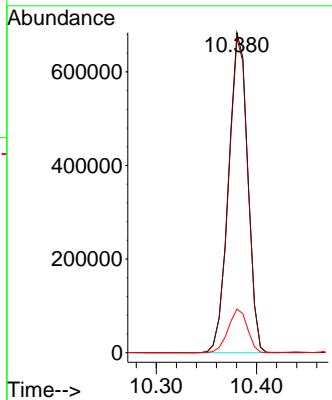
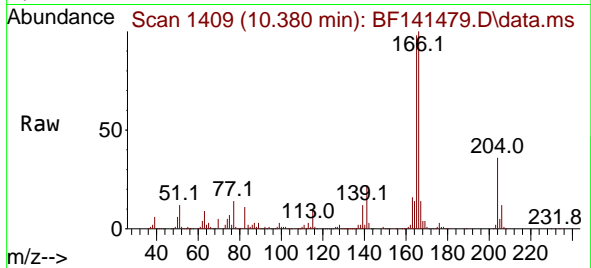
Instrument :

BNA_F

ClientSampleId :

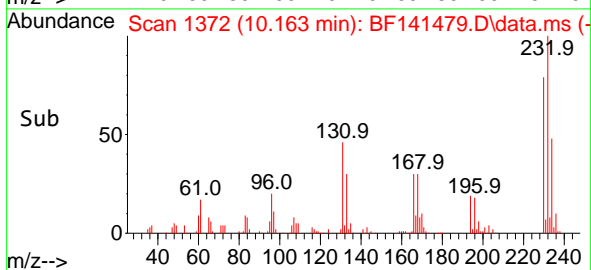
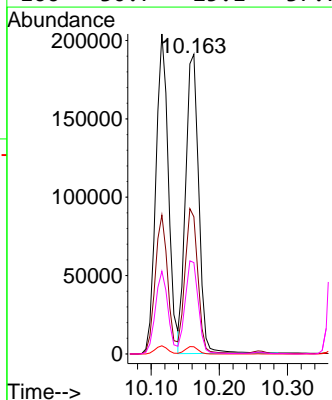
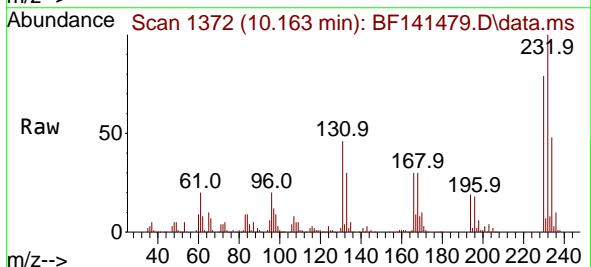
SSTDICC080

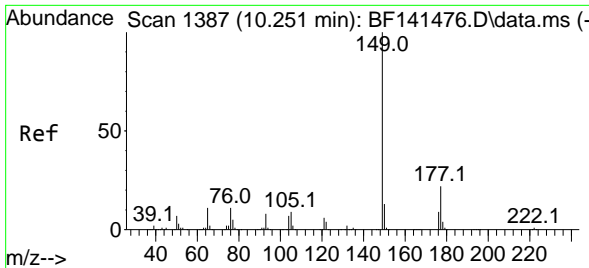
Tgt Ion:166 Resp: 909704
 Ion Ratio Lower Upper
 166 100
 165 98.3 78.2 117.2
 167 13.6 10.7 16.1



#59
 2,3,4,6-Tetrachlorophenol
 Concen: 78.006 ng
 RT: 10.163 min Scan# 1372
 Delta R.T. 0.000 min
 Lab File: BF141479.D
 Acq: 06 Feb 2025 14:14

Tgt Ion:232 Resp: 253454
 Ion Ratio Lower Upper
 232 100
 131 47.1 39.2 58.8
 130 2.4 2.1 3.1
 166 30.7 25.1 37.7



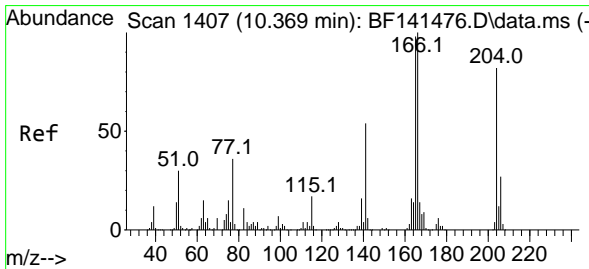
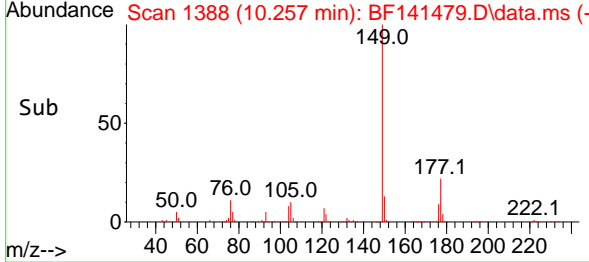
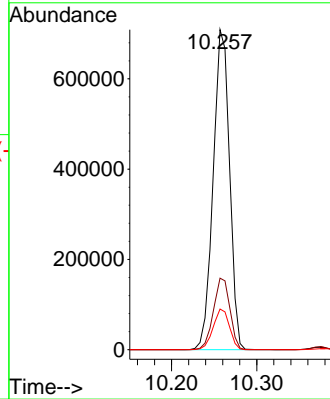
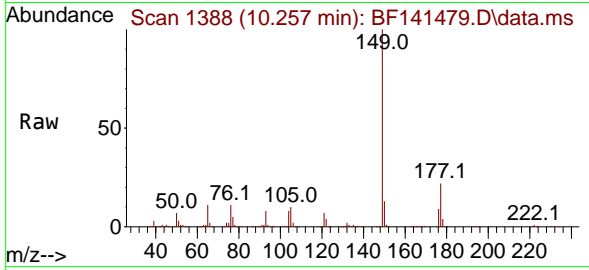


#60
 Diethylphthalate
 Concen: 75.995 ng
 RT: 10.257 min Scan# 11
 Delta R.T. 0.000 min
 Lab File: BF141479.D
 Acq: 06 Feb 2025 14:14

Instrument :
 BNA_F
 ClientSampleId :
 SSTDICC080

Tgt Ion:149 Resp: 945293

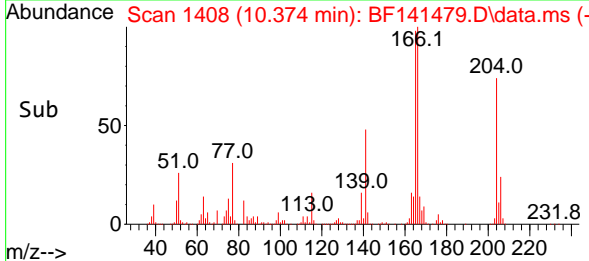
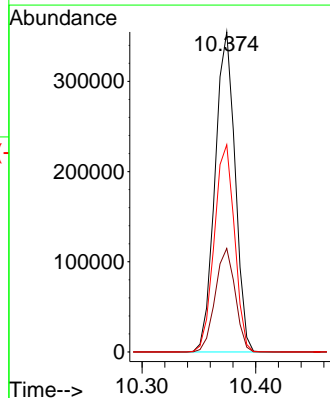
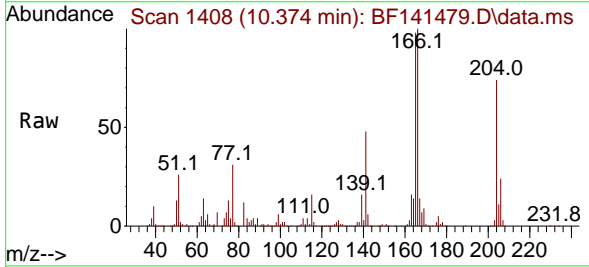
Ion	Ratio	Lower	Upper
149	100		
177	22.4	17.8	26.6
150	12.7	10.1	15.1

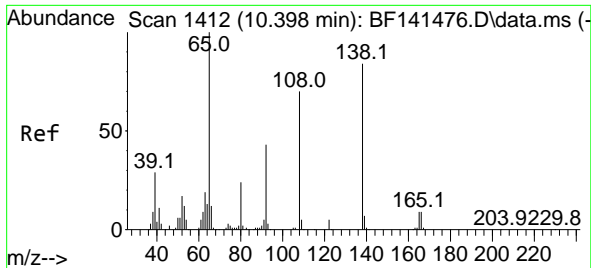


#61
 4-Chlorophenyl-phenylether
 Concen: 74.716 ng
 RT: 10.374 min Scan# 1408
 Delta R.T. 0.000 min
 Lab File: BF141479.D
 Acq: 06 Feb 2025 14:14

Tgt Ion:204 Resp: 435522

Ion	Ratio	Lower	Upper
204	100		
206	32.4	26.6	40.0
141	64.8	51.9	77.9



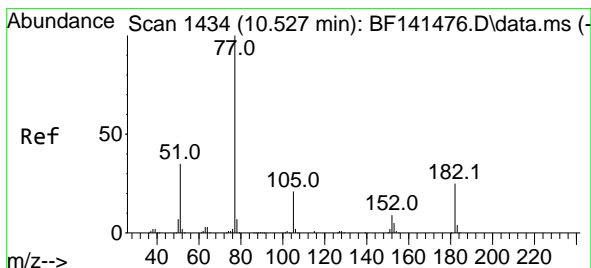
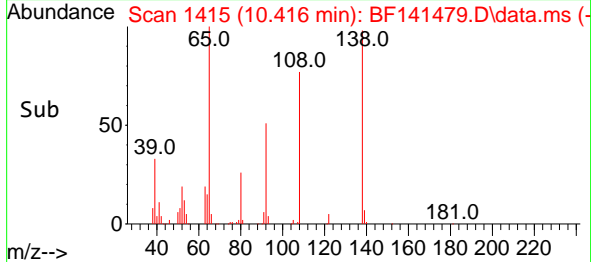
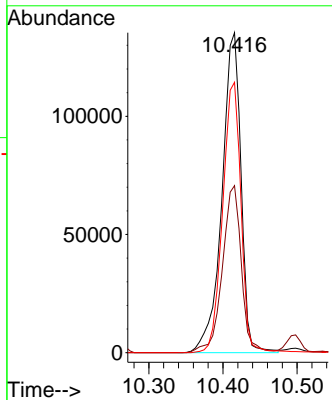
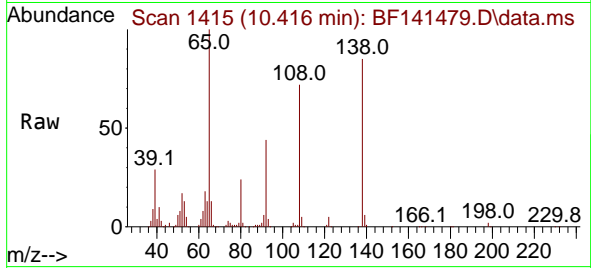


#62
 4-Nitroaniline
 Concen: 79.873 ng
 RT: 10.416 min Scan# 1415
 Delta R.T. 0.000 min
 Lab File: BF141479.D
 Acq: 06 Feb 2025 14:14

Instrument : BNA_F
 ClientSampleId : SSTDICC080

Tgt Ion:138 Resp: 241257

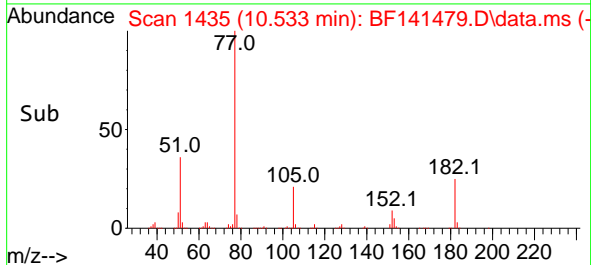
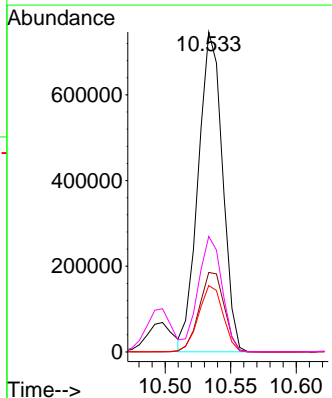
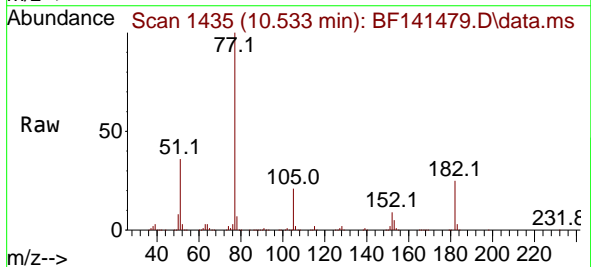
Ion	Ratio	Lower	Upper
138	100		
92	52.2	31.3	71.3
108	84.5	63.7	103.7

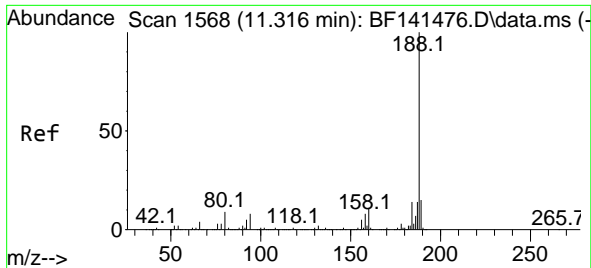


#63
 Azobenzene
 Concen: 77.931 ng
 RT: 10.533 min Scan# 1435
 Delta R.T. 0.000 min
 Lab File: BF141479.D
 Acq: 06 Feb 2025 14:14

Tgt Ion: 77 Resp: 963689

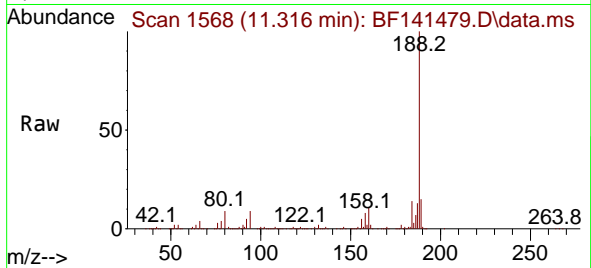
Ion	Ratio	Lower	Upper
77	100		
182	24.9	4.7	44.7
105	20.8	0.4	40.4
51	36.1	16.5	56.5



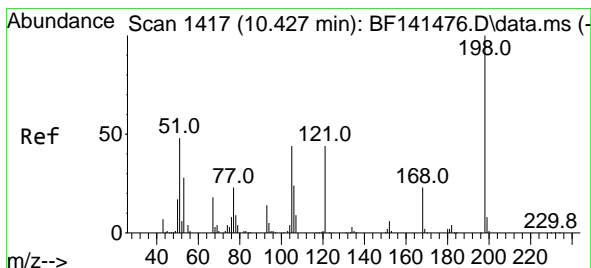
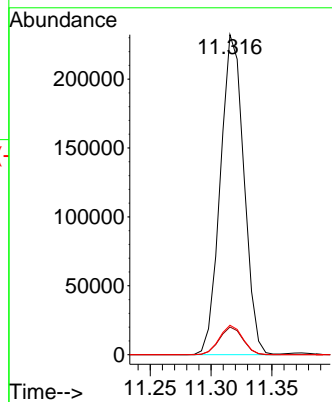
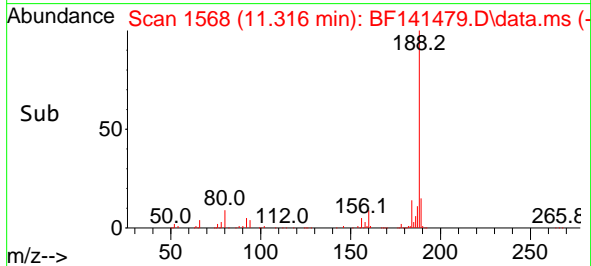


#64
 Phenanthrene-d10
 Concen: 20.000 ng
 RT: 11.316 min Scan# 11
 Delta R.T. -0.000 min
 Lab File: BF141479.D
 Acq: 06 Feb 2025 14:14

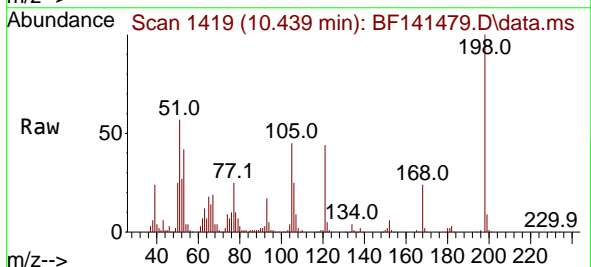
Instrument :
 BNA_F
 ClientSampleId :
 SSTDICC080



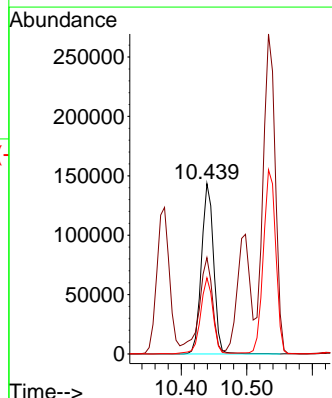
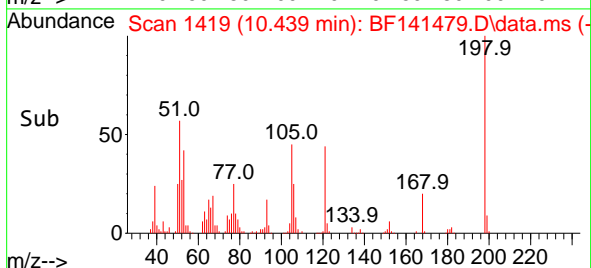
Tgt Ion:188 Resp: 312902
 Ion Ratio Lower Upper
 188 100
 94 8.6 6.6 10.0
 80 9.2 7.3 10.9

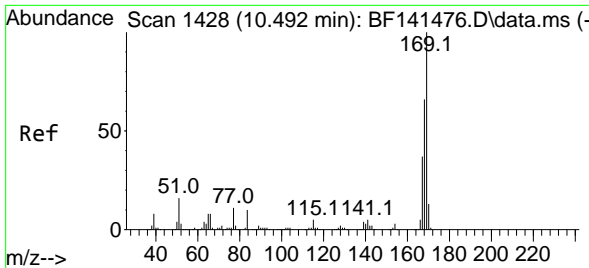


#65
 4,6-Dinitro-2-methylphenol
 Concen: 85.309 ng
 RT: 10.439 min Scan# 1419
 Delta R.T. 0.000 min
 Lab File: BF141479.D
 Acq: 06 Feb 2025 14:14



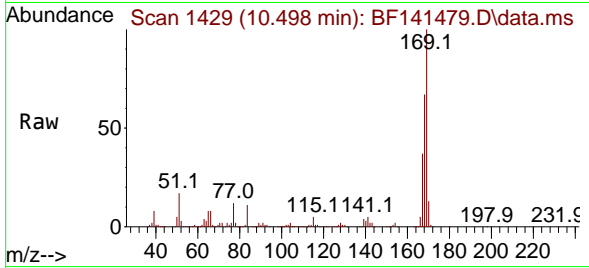
Tgt Ion:198 Resp: 185427
 Ion Ratio Lower Upper
 198 100
 51 56.6 37.4 77.4
 105 44.7 25.2 65.2



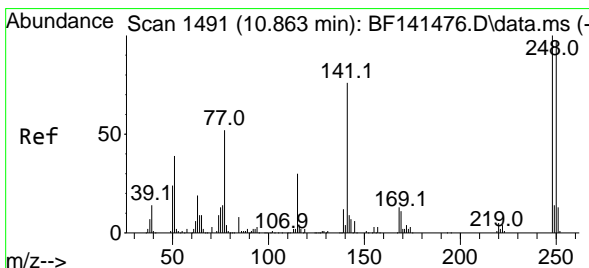
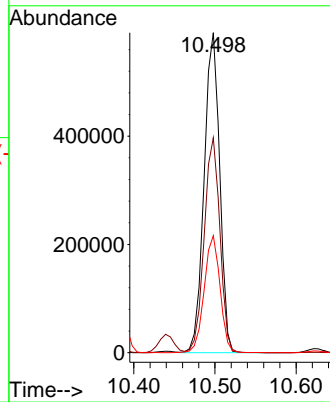
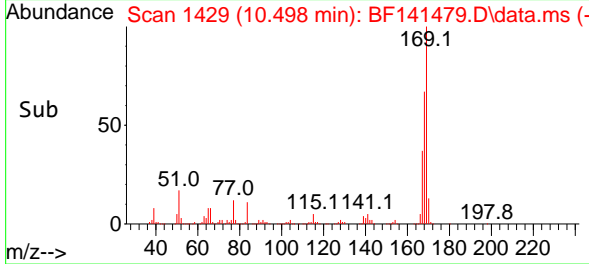


#66
 n-Nitrosodiphenylamine
 Concen: 78.404 ng
 RT: 10.498 min Scan# 1428
 Delta R.T. 0.000 min
 Lab File: BF141479.D
 Acq: 06 Feb 2025 14:14

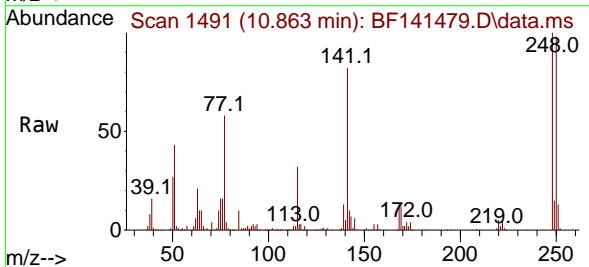
Instrument :
 BNA_F
 ClientSampleId :
 SSTDICC080



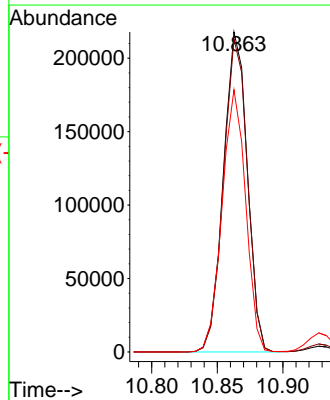
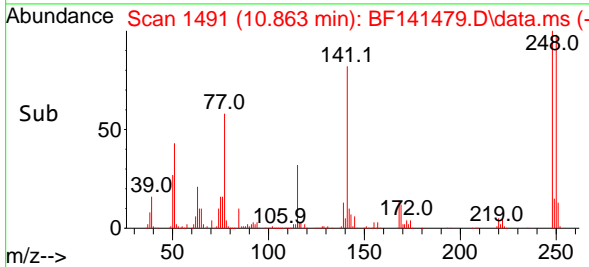
Tgt Ion:169 Resp: 785313
 Ion Ratio Lower Upper
 169 100
 168 67.2 53.3 79.9
 167 36.6 29.4 44.2

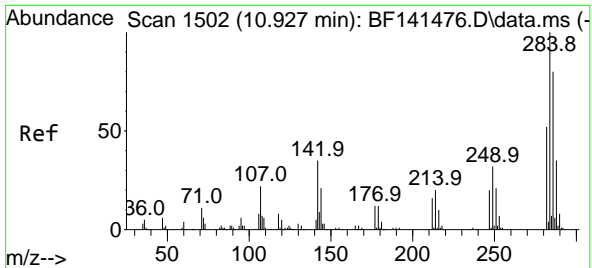


#67
 4-Bromophenyl-phenylether
 Concen: 78.988 ng
 RT: 10.863 min Scan# 1491
 Delta R.T. 0.000 min
 Lab File: BF141479.D
 Acq: 06 Feb 2025 14:14



Tgt Ion:248 Resp: 276228
 Ion Ratio Lower Upper
 248 100
 250 97.8 77.8 116.6
 141 81.9 60.6 90.8



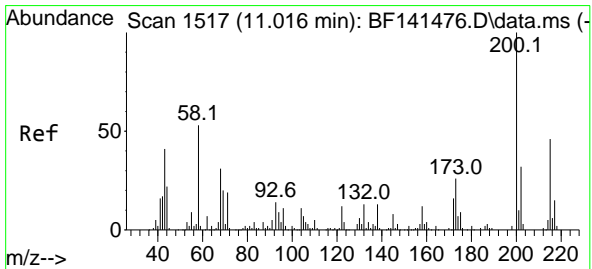
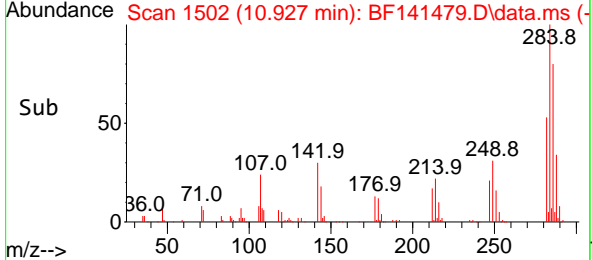
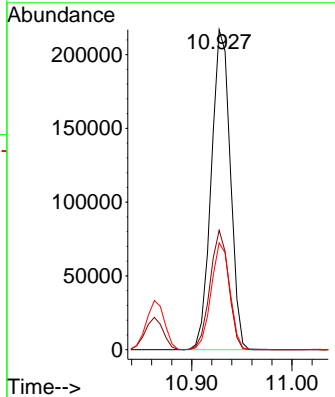
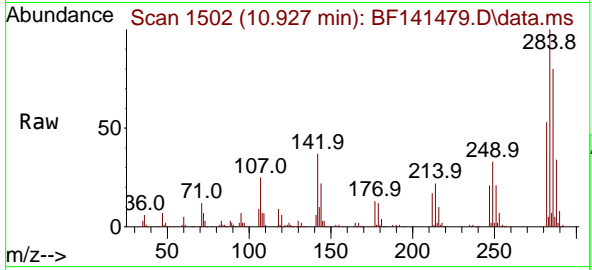


#68
 Hexachlorobenzene
 Concen: 79.174 ng
 RT: 10.927 min Scan# 1502
 Delta R.T. 0.000 min
 Lab File: BF141479.D
 Acq: 06 Feb 2025 14:14

Instrument : BNA_F
 ClientSampleId : SSTDICC080

Tgt Ion:284 Resp: 285111

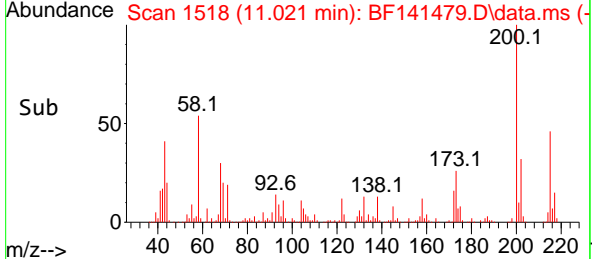
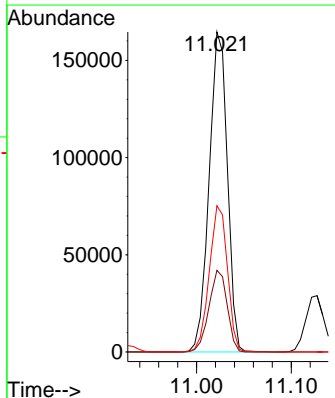
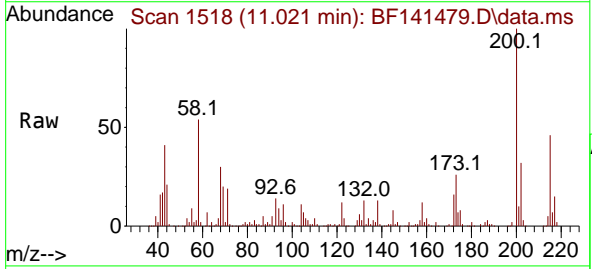
Ion	Ratio	Lower	Upper
284	100		
142	37.3	28.0	42.0
249	33.4	25.8	38.8

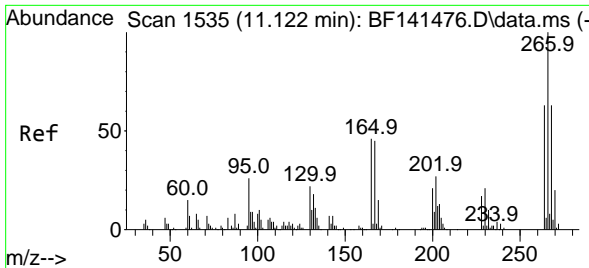


#69
 Atrazine
 Concen: 73.188 ng
 RT: 11.021 min Scan# 1518
 Delta R.T. 0.000 min
 Lab File: BF141479.D
 Acq: 06 Feb 2025 14:14

Tgt Ion:200 Resp: 219923

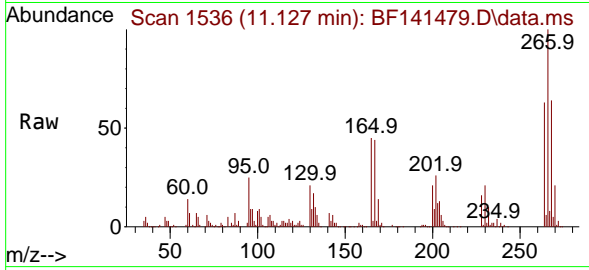
Ion	Ratio	Lower	Upper
200	100		
173	25.5	5.9	45.9
215	45.7	25.9	65.9



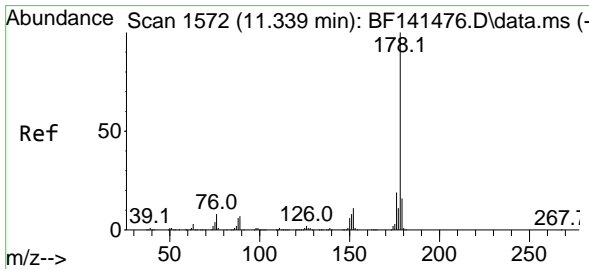
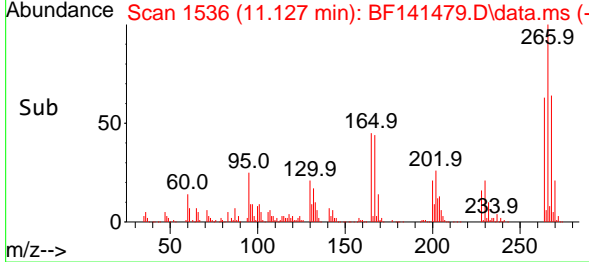
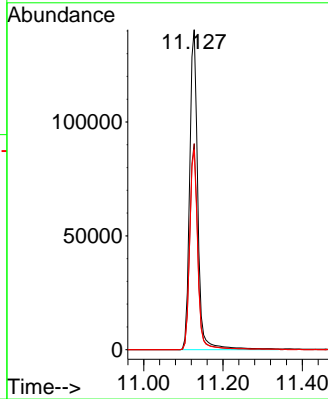


#70
 Pentachlorophenol
 Concen: 87.100 ng
 RT: 11.127 min Scan# 1111
 Delta R.T. 0.000 min
 Lab File: BF141479.D
 Acq: 06 Feb 2025 14:14

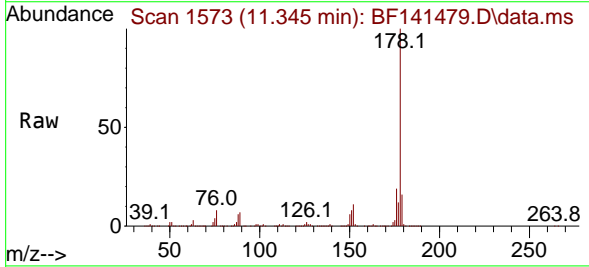
Instrument :
 BNA_F
 ClientSampleId :
 SSTDICC080



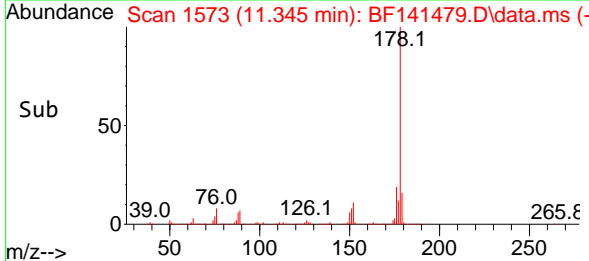
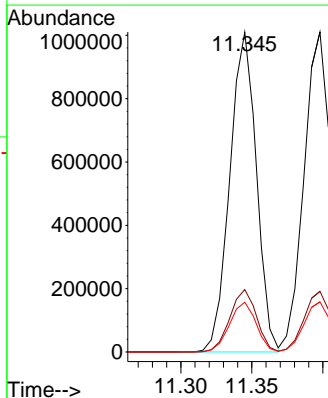
Tgt Ion:266 Resp: 200556
 Ion Ratio Lower Upper
 266 100
 268 64.4 50.1 75.1
 264 62.5 50.1 75.1

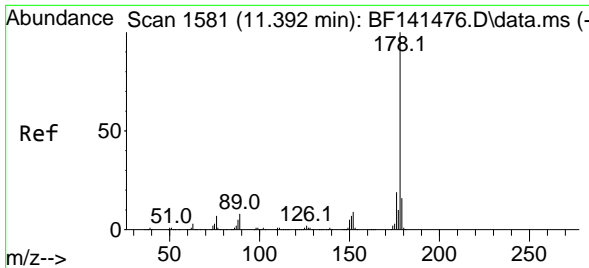


#71
 Phenanthrene
 Concen: 76.201 ng
 RT: 11.345 min Scan# 1573
 Delta R.T. 0.000 min
 Lab File: BF141479.D
 Acq: 06 Feb 2025 14:14



Tgt Ion:178 Resp: 1312474
 Ion Ratio Lower Upper
 178 100
 176 19.5 15.4 23.0
 179 15.6 12.4 18.6

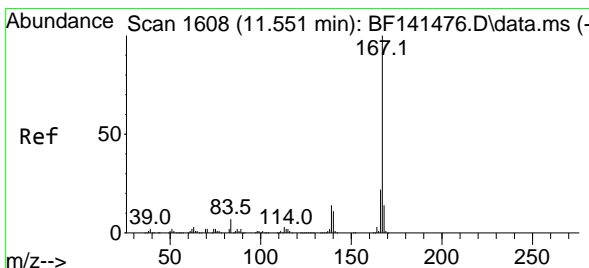
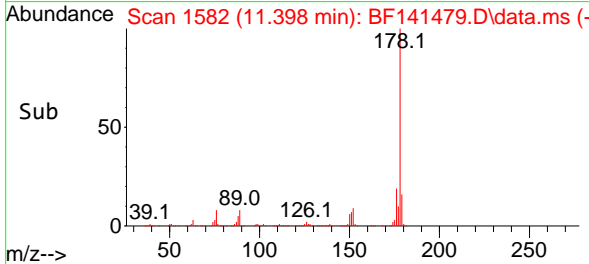
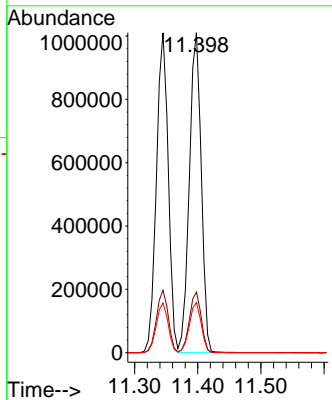
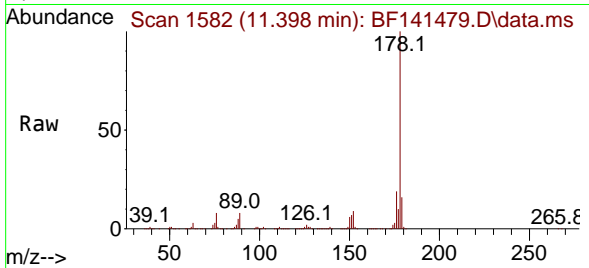




#72
 Anthracene
 Concen: 76.380 ng
 RT: 11.398 min Scan# 11
 Delta R.T. 0.000 min
 Lab File: BF141479.D
 Acq: 06 Feb 2025 14:14

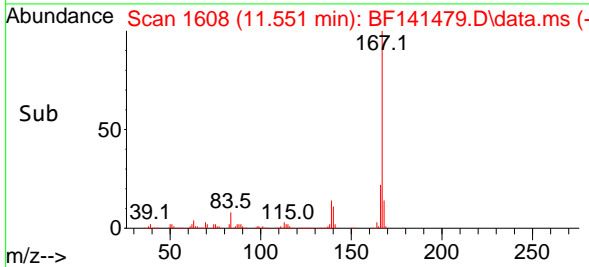
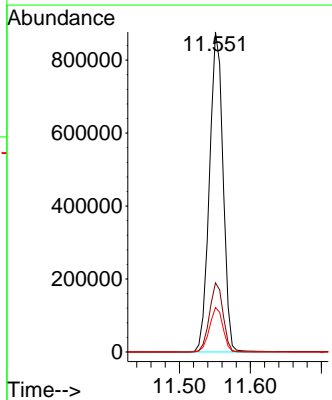
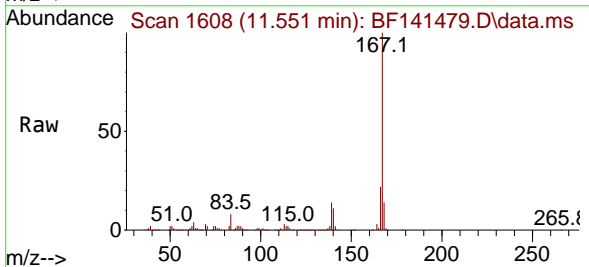
Instrument :
 BNA_F
 ClientSampleId :
 SSTDICC080

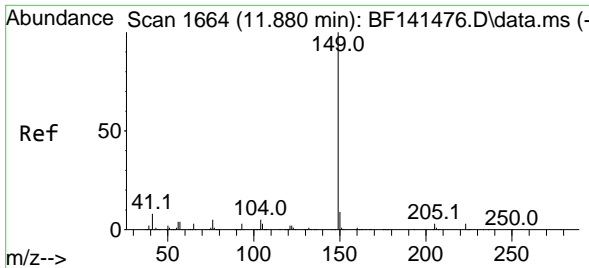
Tgt Ion:178 Resp: 1322462
 Ion Ratio Lower Upper
 178 100
 176 19.0 14.8 22.2
 179 15.6 12.4 18.6



#73
 Carbazole
 Concen: 74.989 ng
 RT: 11.551 min Scan# 1608
 Delta R.T. 0.000 min
 Lab File: BF141479.D
 Acq: 06 Feb 2025 14:14

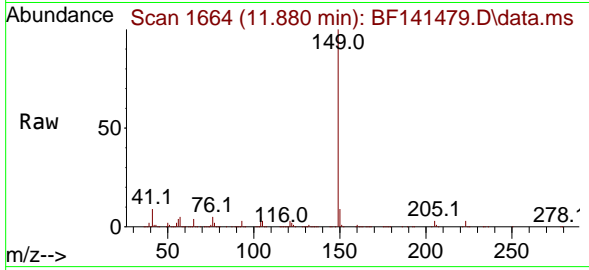
Tgt Ion:167 Resp: 1168253
 Ion Ratio Lower Upper
 167 100
 166 21.6 17.4 26.2
 139 13.9 10.9 16.3



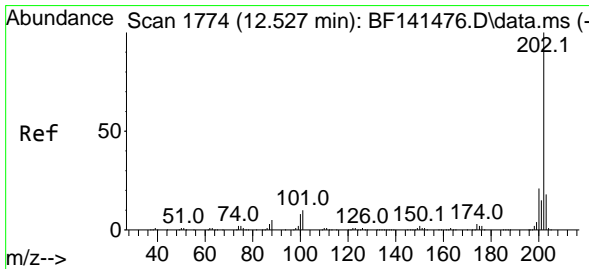
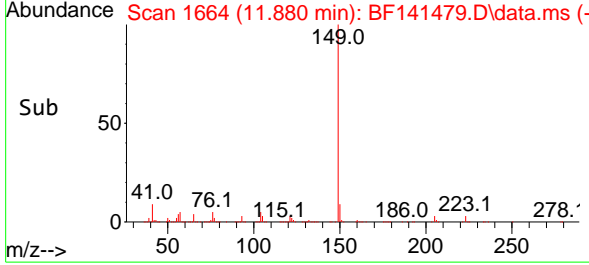
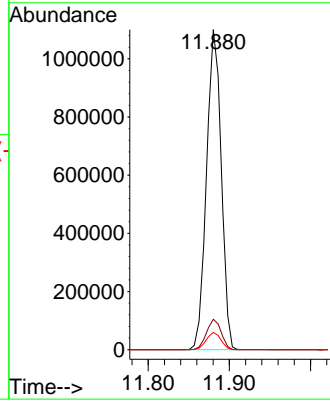


#74
 Di-n-butylphthalate
 Concen: 76.865 ng
 RT: 11.880 min Scan# 11
 Delta R.T. 0.000 min
 Lab File: BF141479.D
 Acq: 06 Feb 2025 14:14

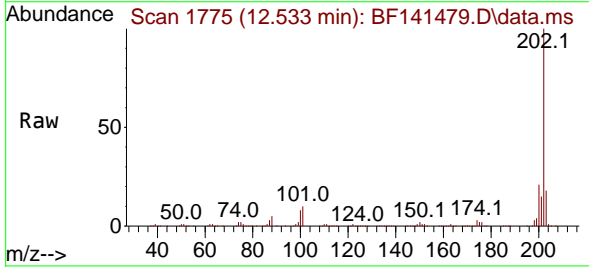
Instrument :
 BNA_F
 ClientSampleId :
 SSTDICC080



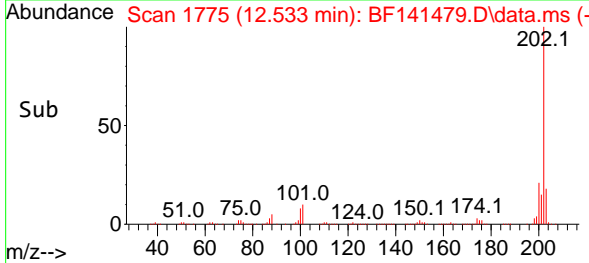
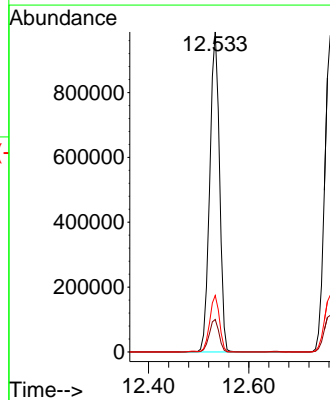
Tgt Ion:149 Resp: 1382706
 Ion Ratio Lower Upper
 149 100
 150 9.5 7.4 11.0
 104 5.4 4.2 6.2

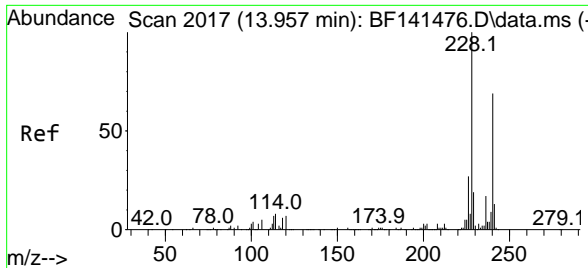


#75
 Fluoranthene
 Concen: 73.011 ng
 RT: 12.533 min Scan# 1775
 Delta R.T. 0.000 min
 Lab File: BF141479.D
 Acq: 06 Feb 2025 14:14



Tgt Ion:202 Resp: 1333237
 Ion Ratio Lower Upper
 202 100
 101 10.2 0.0 30.2
 203 17.6 0.0 37.6



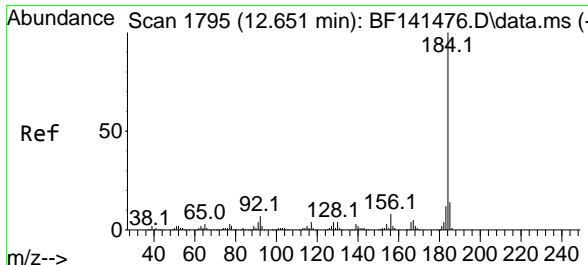
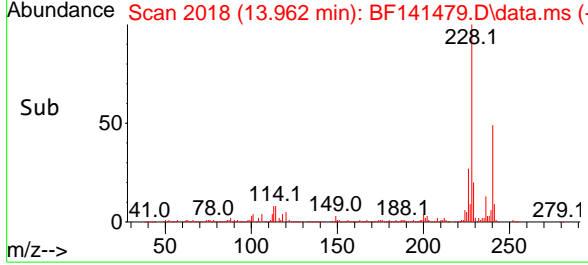
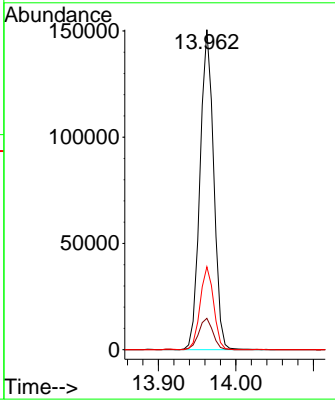
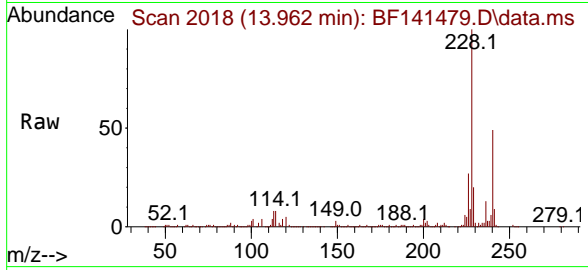


#76
 Chrysene-d12
 Concen: 20.000 ng
 RT: 13.962 min Scan# 2017
 Delta R.T. 0.000 min
 Lab File: BF141479.D
 Acq: 06 Feb 2025 14:14

Instrument : BNA_F
 ClientSampleId : SSTDIC080

Tgt Ion:240 Resp: 184347

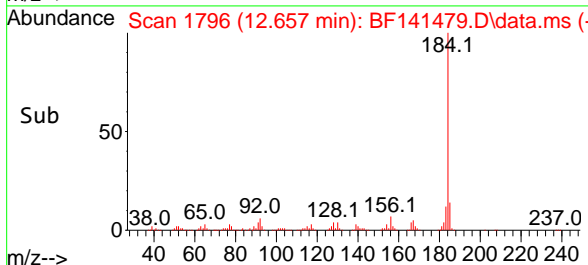
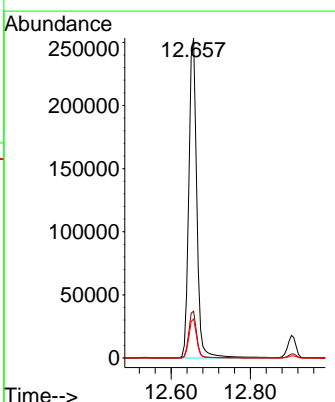
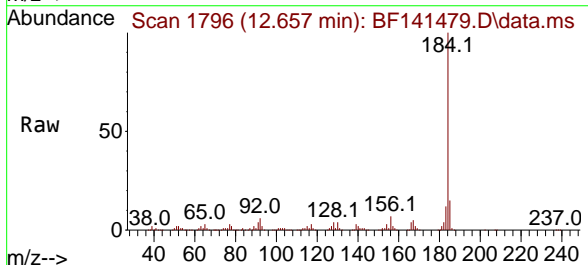
Ion	Ratio	Lower	Upper
240	100		
120	9.8	8.0	12.0
236	25.9	19.8	29.8

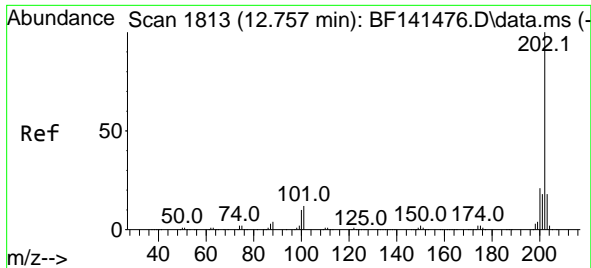


#77
 Benzidine
 Concen: 87.207 ng
 RT: 12.657 min Scan# 1796
 Delta R.T. 0.000 min
 Lab File: BF141479.D
 Acq: 06 Feb 2025 14:14

Tgt Ion:184 Resp: 354555

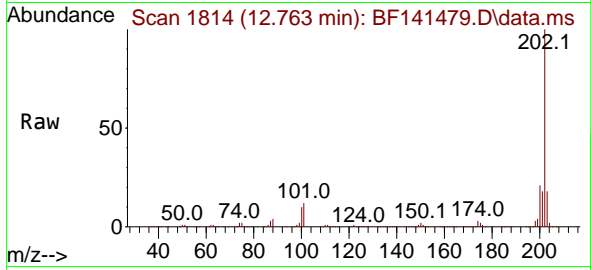
Ion	Ratio	Lower	Upper
184	100		
185	14.6	11.3	16.9
183	12.1	9.3	13.9





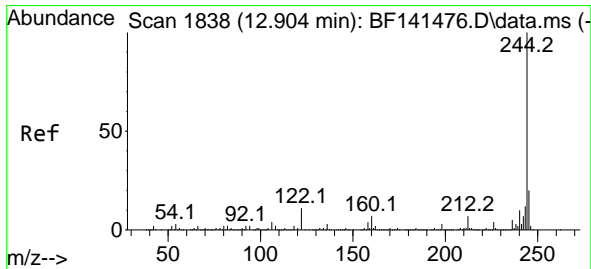
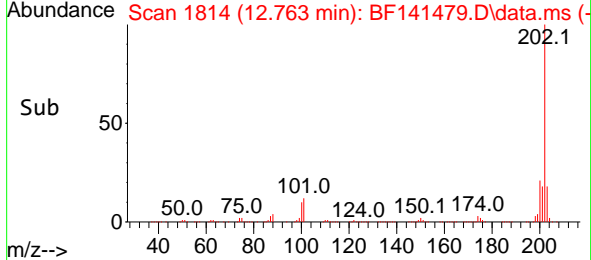
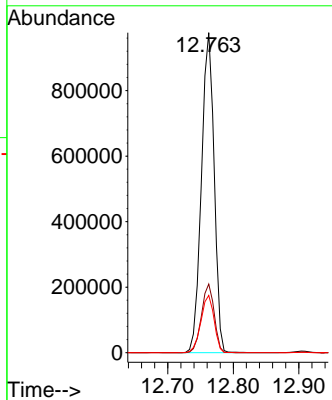
#78
 Pyrene
 Concen: 84.086 ng
 RT: 12.763 min Scan# 1814
 Delta R.T. 0.000 min
 Lab File: BF141479.D
 Acq: 06 Feb 2025 14:14

Instrument : BNA_F
 Client Sample Id : SSTDIC080



Tgt Ion: 202 Resp: 1319554

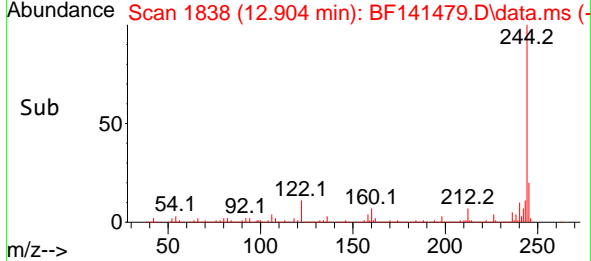
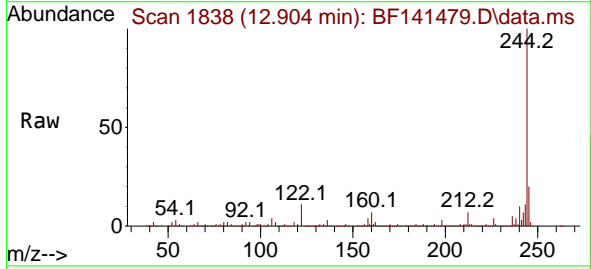
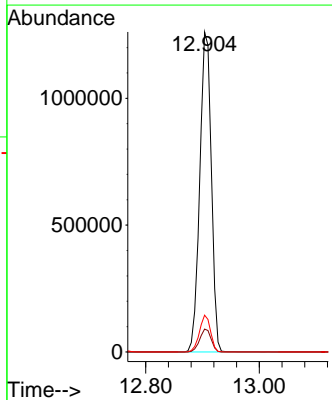
Ion	Ratio	Lower	Upper
202	100		
200	21.4	17.0	25.4
203	17.9	14.3	21.5

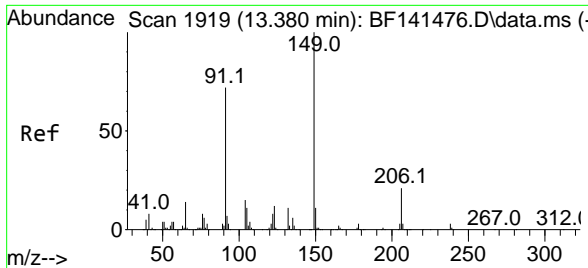


#79
 Terphenyl-d14
 Concen: 163.152 ng
 RT: 12.904 min Scan# 1838
 Delta R.T. 0.000 min
 Lab File: BF141479.D
 Acq: 06 Feb 2025 14:14

Tgt Ion: 244 Resp: 1781602

Ion	Ratio	Lower	Upper
244	100		
212	7.2	5.6	8.4
122	11.5	8.4	12.6

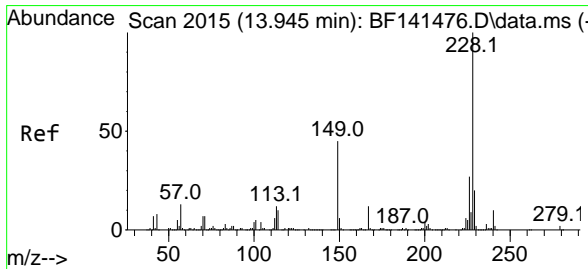
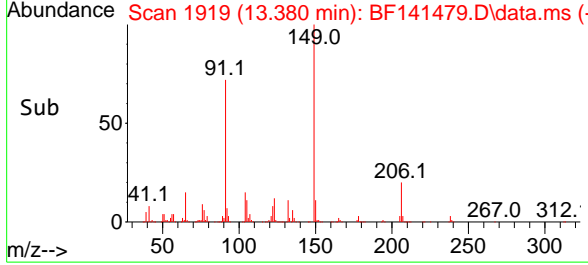
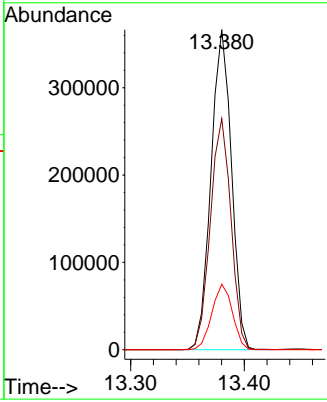
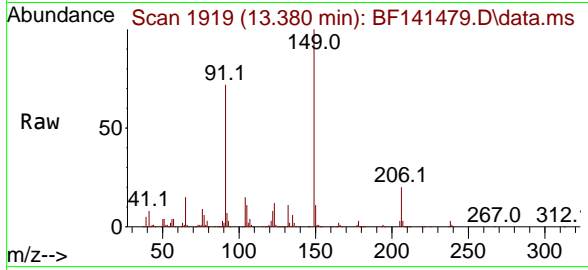




#80
 Butylbenzylphthalate
 Concen: 84.592 ng
 RT: 13.380 min Scan# 1919
 Delta R.T. 0.000 min
 Lab File: BF141479.D
 Acq: 06 Feb 2025 14:14

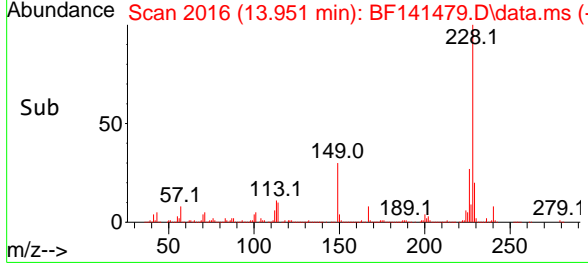
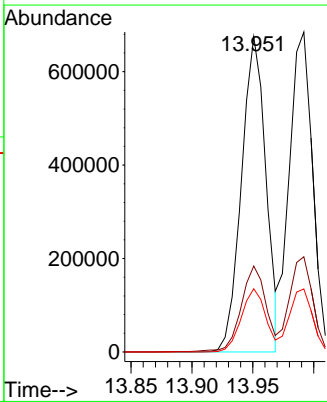
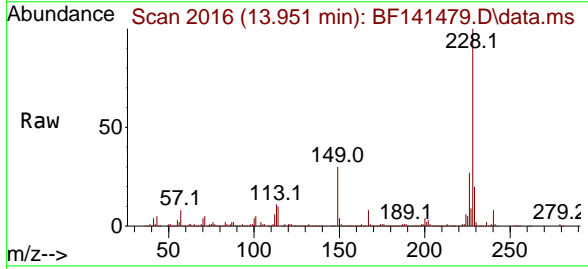
Instrument : BNA_F
 ClientSampleId : SSTDICC080

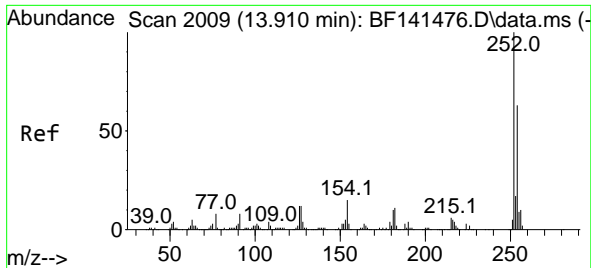
Tgt Ion	Resp	Lower	Upper
149	100		
91	72.2	57.8	86.8
206	20.4	16.7	25.1



#81
 Benzo(a)anthracene
 Concen: 76.977 ng
 RT: 13.951 min Scan# 2016
 Delta R.T. 0.000 min
 Lab File: BF141479.D
 Acq: 06 Feb 2025 14:14

Tgt Ion	Resp	Lower	Upper
228	100		
226	27.3	21.8	32.8
229	20.0	15.8	23.6

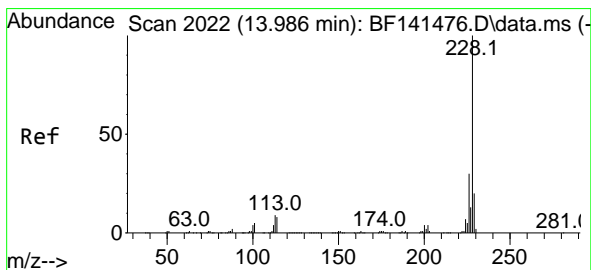
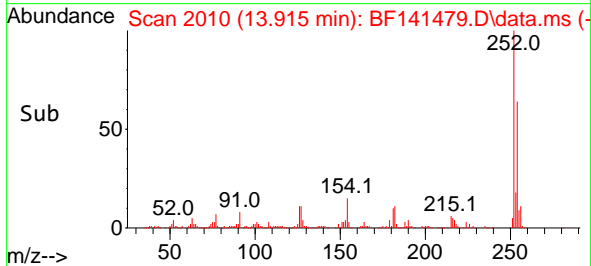
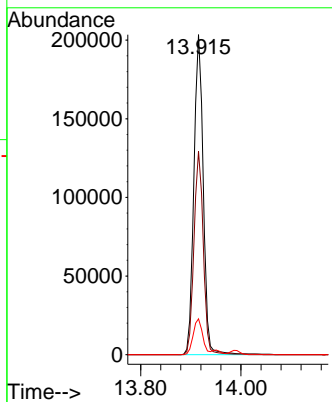
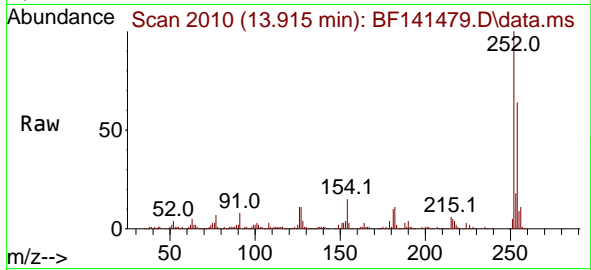




#82
 3,3'-Dichlorobenzidine
 Concen: 75.143 ng
 RT: 13.915 min Scan# 2009
 Delta R.T. 0.000 min
 Lab File: BF141479.D
 Acq: 06 Feb 2025 14:14

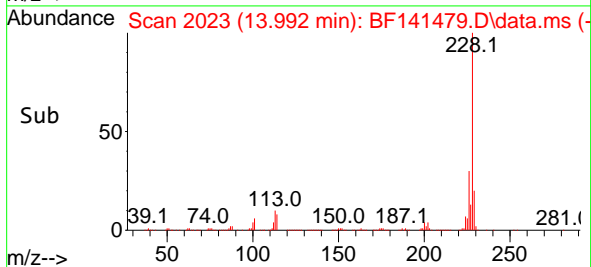
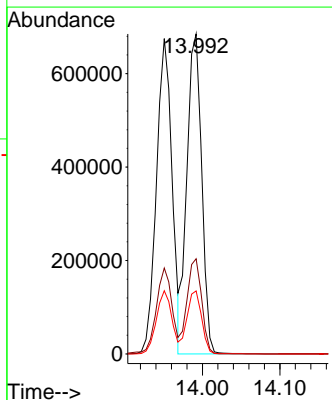
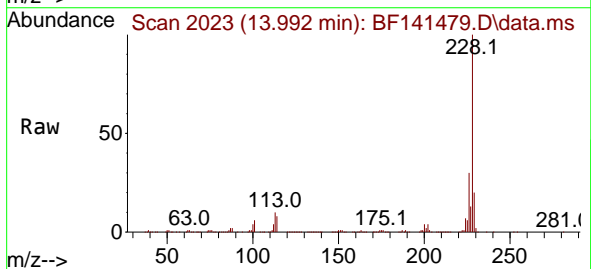
Instrument : BNA_F
 ClientSampleId : SSTDICC080

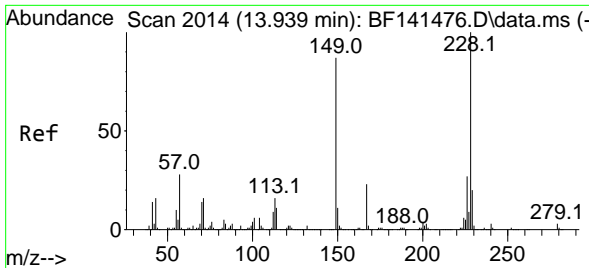
Tgt Ion:252 Resp: 263773
 Ion Ratio Lower Upper
 252 100
 254 63.6 50.6 76.0
 126 11.2 9.3 13.9



#83
 Chrysene
 Concen: 80.108 ng
 RT: 13.992 min Scan# 2023
 Delta R.T. 0.000 min
 Lab File: BF141479.D
 Acq: 06 Feb 2025 14:14

Tgt Ion:228 Resp: 906415
 Ion Ratio Lower Upper
 228 100
 226 29.8 24.0 36.0
 229 19.7 15.7 23.5





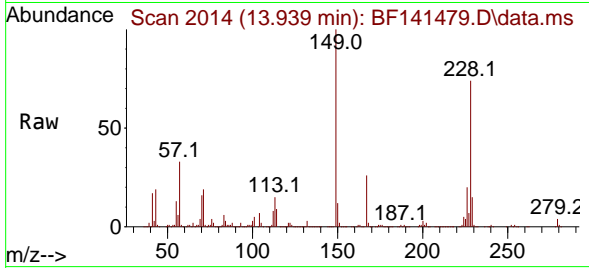
#84
 Bis(2-ethylhexyl)phthalate
 Concen: 84.477 ng
 RT: 13.939 min Scan# 2014
 Delta R.T. 0.000 min
 Lab File: BF141479.D
 Acq: 06 Feb 2025 14:14

Instrument :

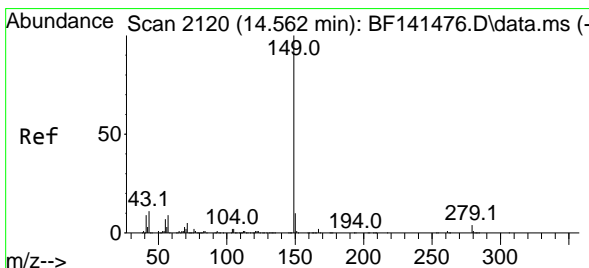
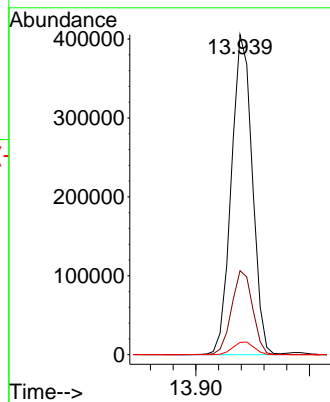
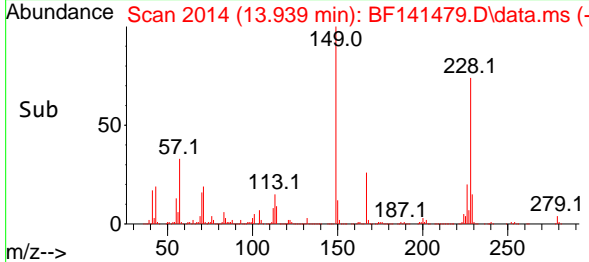
BNA_F

ClientSampleId :

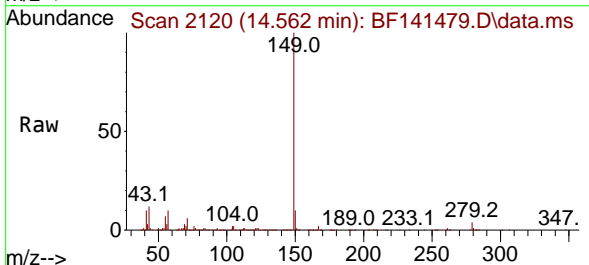
SSTDICC080



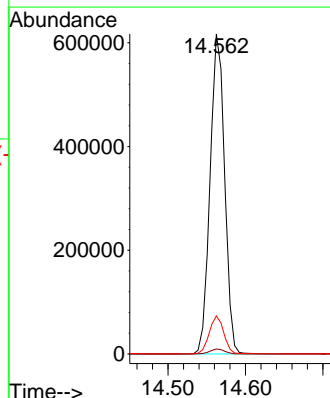
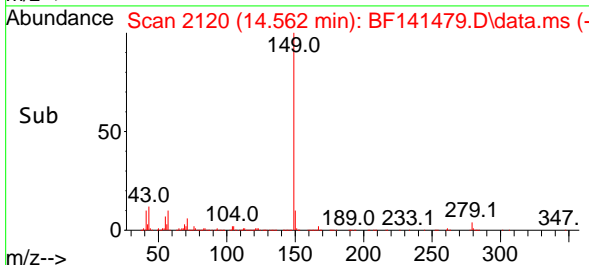
Tgt Ion:149 Resp: 517884
 Ion Ratio Lower Upper
 149 100
 167 26.3 21.4 32.0
 279 3.9 3.1 4.7

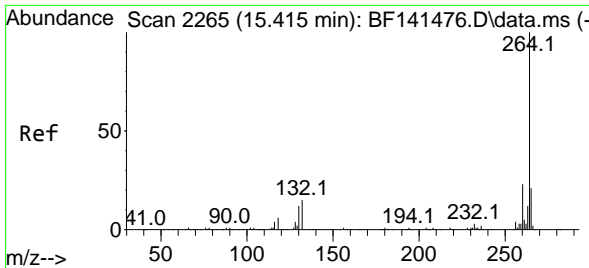


#85
 Di-n-octyl phthalate
 Concen: 91.886 ng
 RT: 14.562 min Scan# 2120
 Delta R.T. 0.000 min
 Lab File: BF141479.D
 Acq: 06 Feb 2025 14:14



Tgt Ion:149 Resp: 803601
 Ion Ratio Lower Upper
 149 100
 167 1.6 1.3 1.9
 43 11.8 9.5 14.3





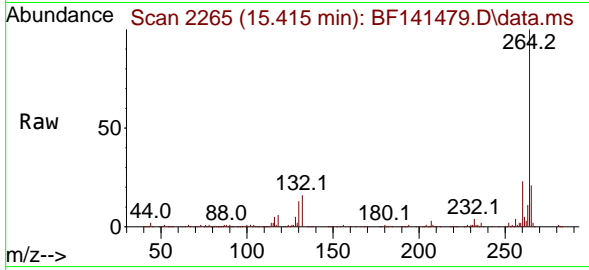
#86
 Perylene-d12
 Concen: 20.000 ng
 RT: 15.415 min Scan# 21
 Delta R.T. 0.000 min
 Lab File: BF141479.D
 Acq: 06 Feb 2025 14:14

Instrument :

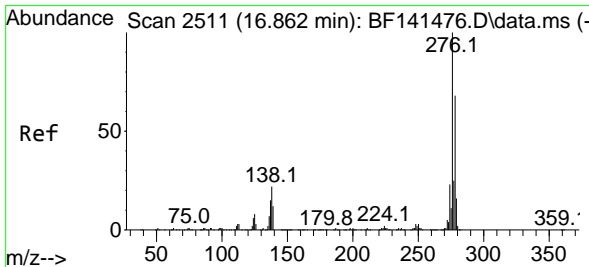
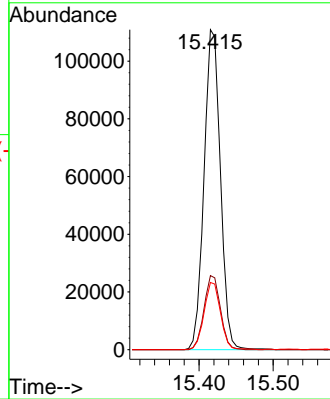
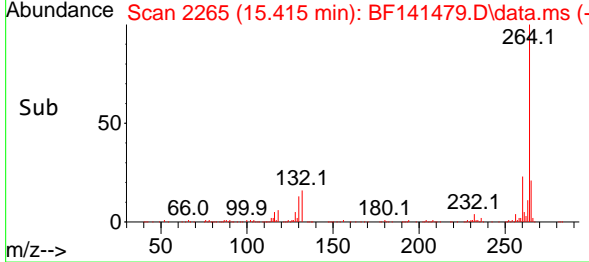
BNA_F

ClientSampleId :

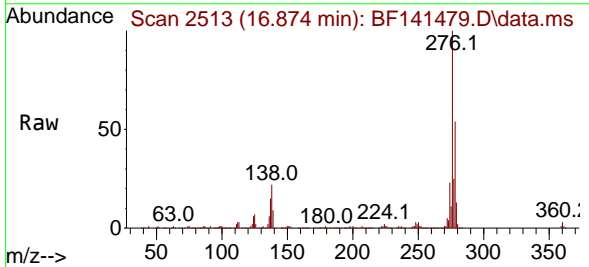
SSTDICC080



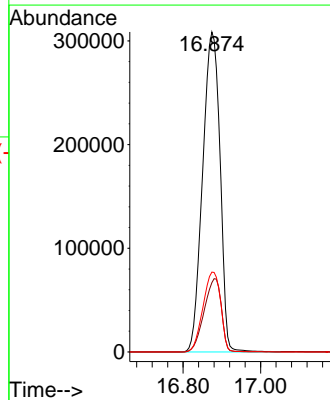
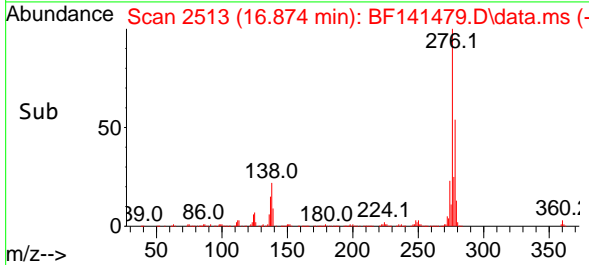
Tgt Ion:264 Resp: 170605
 Ion Ratio Lower Upper
 264 100
 260 23.1 18.6 28.0
 265 21.0 17.0 25.4

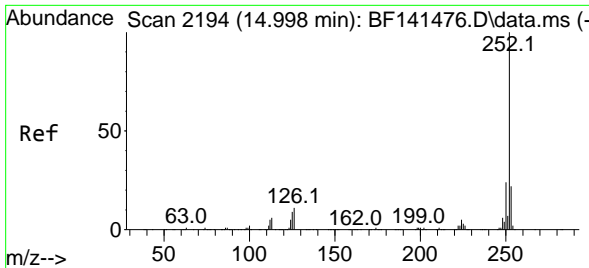


#87
 Indeno(1,2,3-cd)pyrene
 Concen: 91.166 ng
 RT: 16.874 min Scan# 2513
 Delta R.T. 0.000 min
 Lab File: BF141479.D
 Acq: 06 Feb 2025 14:14



Tgt Ion:276 Resp: 961023
 Ion Ratio Lower Upper
 276 100
 138 22.7 18.0 27.0
 277 25.4 20.4 30.6



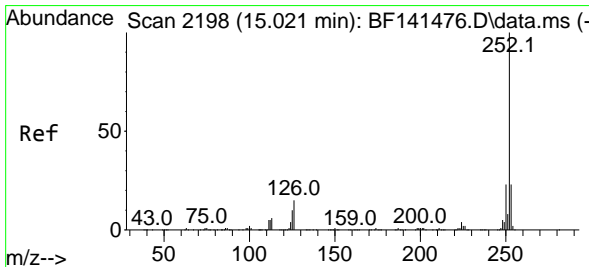
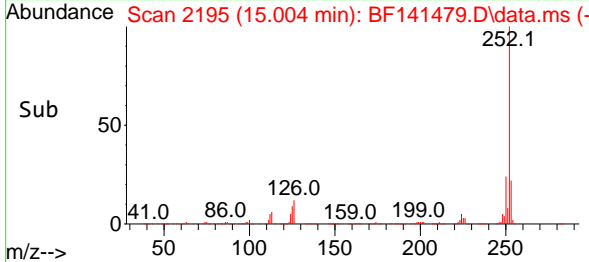
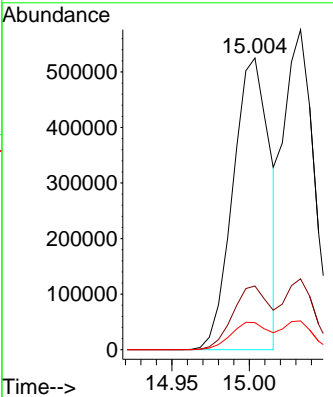
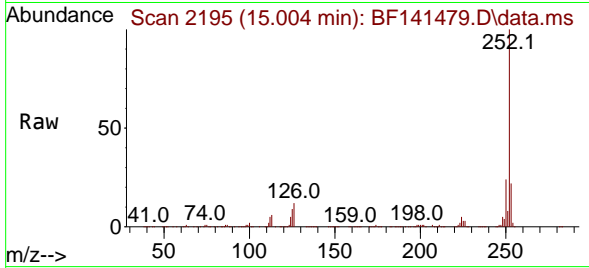


#88
 Benzo(b)fluoranthene
 Concen: 75.529 ng
 RT: 15.004 min Scan# 2194
 Delta R.T. 0.000 min
 Lab File: BF141479.D
 Acq: 06 Feb 2025 14:14

Instrument : BNA_F
 ClientSampleId : SSTDICC080

Tgt Ion:252 Resp: 865205

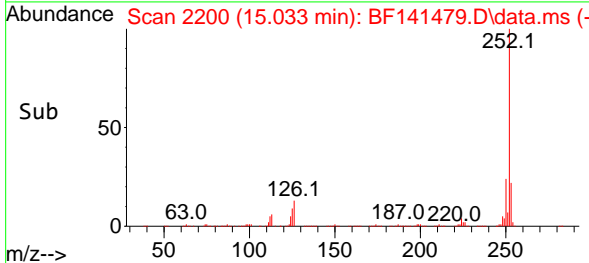
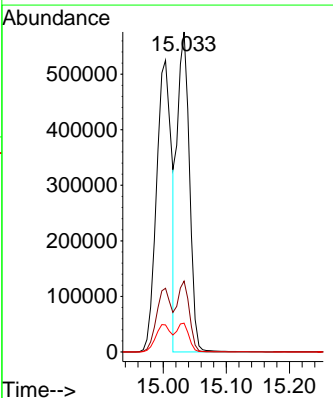
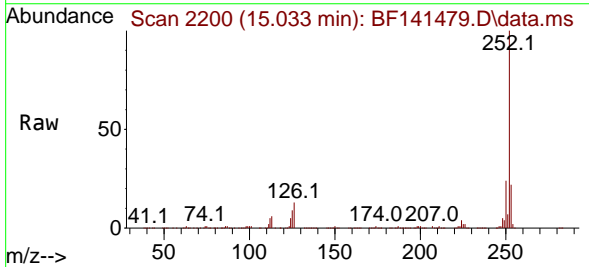
Ion	Ratio	Lower	Upper
252	100		
253	21.8	17.5	26.3
125	9.3	7.0	10.6

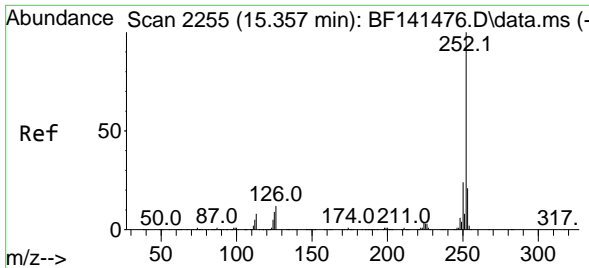


#89
 Benzo(k)fluoranthene
 Concen: 79.364 ng
 RT: 15.033 min Scan# 2200
 Delta R.T. 0.000 min
 Lab File: BF141479.D
 Acq: 06 Feb 2025 14:14

Tgt Ion:252 Resp: 776323

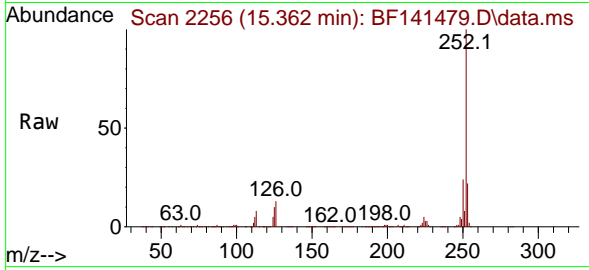
Ion	Ratio	Lower	Upper
252	100		
253	22.2	18.0	27.0
125	9.0	7.4	11.0



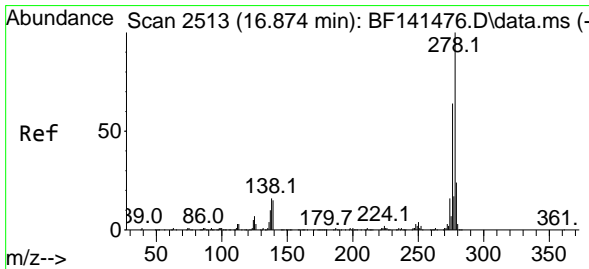
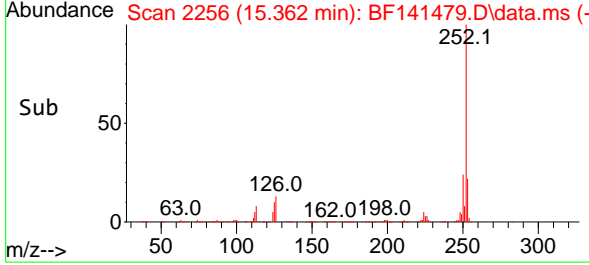
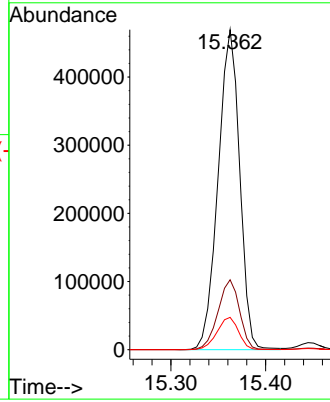


#90
 Benzo(a)pyrene
 Concen: 80.150 ng
 RT: 15.362 min Scan# 21
 Delta R.T. 0.000 min
 Lab File: BF141479.D
 Acq: 06 Feb 2025 14:14

Instrument :
 BNA_F
 ClientSampleId :
 SSTDICC080

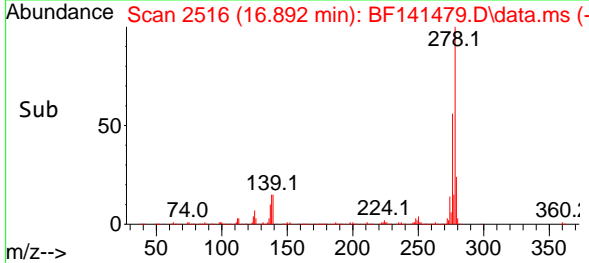
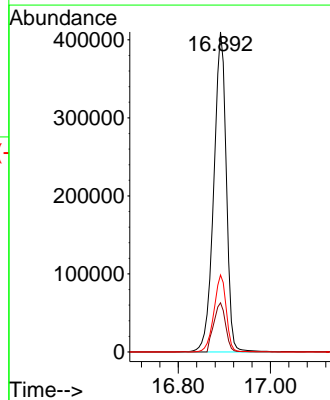
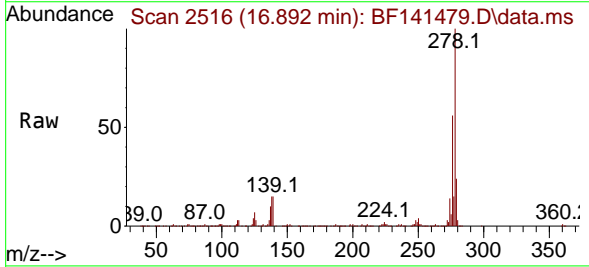


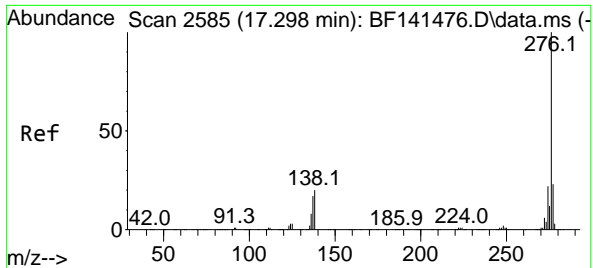
Tgt Ion:252 Resp: 742932
 Ion Ratio Lower Upper
 252 100
 253 21.8 17.1 25.7
 125 10.1 7.4 11.2



#91
 Dibenzo(a,h)anthracene
 Concen: 90.578 ng
 RT: 16.892 min Scan# 2516
 Delta R.T. 0.000 min
 Lab File: BF141479.D
 Acq: 06 Feb 2025 14:14

Tgt Ion:278 Resp: 773684
 Ion Ratio Lower Upper
 278 100
 139 15.3 11.8 17.6
 279 24.1 19.1 28.7





#92
 Benzo(g,h,i)perylene
 Concen: 93.015 ng
 RT: 17.315 min Scan# 21
 Delta R.T. 0.000 min
 Lab File: BF141479.D
 Acq: 06 Feb 2025 14:14

Instrument : BNA_F
 ClientSampleId : SSTDIC080

Tgt Ion: 276 Resp: 831418

Ion	Ratio	Lower	Upper
276	100		
277	23.9	18.6	28.0
138	20.2	15.9	23.9

