

Data Path : Z:\voasrv\HPCHEM1\MSVOA_L\Data\VL021125\
 Data File : VL042000.D
 Acq On : 11 Feb 2025 12:46
 Operator : SY/MD
 Sample : Q1342-02
 Misc : 400mL/MSVOA_L
 ALS Vial : 6 Sample Multiplier: 1

Instrument :
 MSVOA_L
 ClientSampleId :
 OA1

Quant Time: Feb 11 22:19:40 2025
 Quant Method : Z:\voasrv\HPCHEM1\MSVOA_L\methods\VL011425AIR.M
 Quant Title : AIR ANALYSIS BY METHOD TO-15 Instrument: MSVOA_L Fri Aug 26 06:05:16 2022
 QLast Update : Tue Jan 14 23:15:42 2025
 Response via : Initial Calibration

Compound	R.T.	QIon	Response	Conc	Units	Dev(Min)

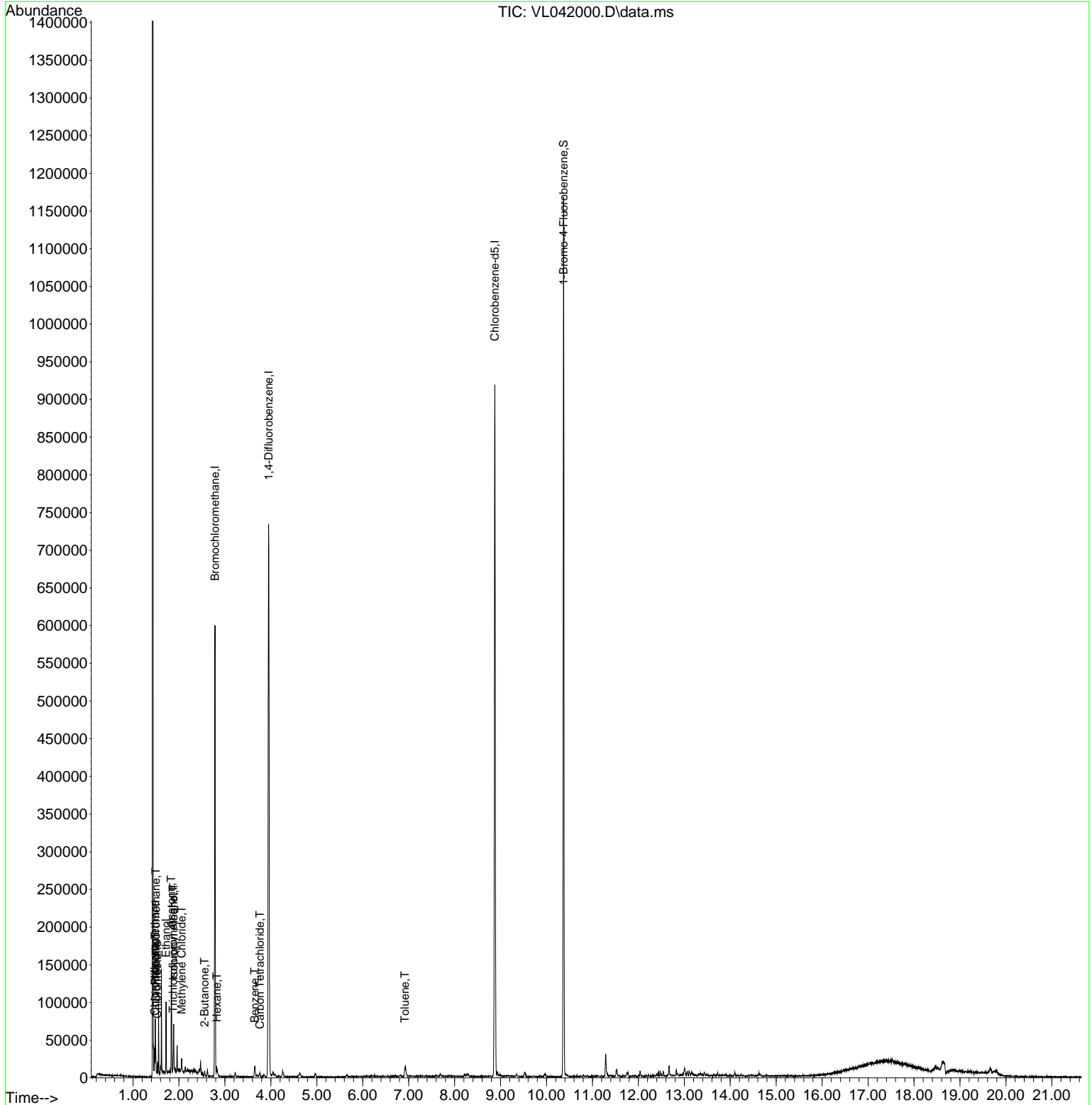
Internal Standards						
1) Bromochloromethane	2.784	49	163409	10.000	ppbv	-0.01
33) 1,4-Difluorobenzene	3.952	114	436244	10.000	ppbv	-0.02
55) Chlorobenzene-d5	8.875	117	374213	10.000	ppbv	-0.02
System Monitoring Compounds						
68) 1-Bromo-4-Fluorobenzene	10.370	95	289633	9.827	ppbv	-0.02
Spiked Amount	10.000	Range	65 - 135	Recovery	=	98.300%
Target Compounds						
						Qvalue
2) Dichlorodifluoromethane	1.496	85	8586	0.386	ppbv	90
3) Chlorodifluoromethane	1.473	51	5138m	0.220	ppbv	
4) Chloromethane	1.528	50	4437	0.530	ppbv	96
9) Propene	1.483	41	6246	0.650	ppbv	90
11) Trichlorofluoromethane	1.874	101	4482	0.194	ppbv	87
13) Ethanol	1.719	45	30945	43.982	ppbv	89
15) Acetone	1.832	43	62268	3.173	ppbv	98
19) Isopropyl Alcohol	1.884	45	25228	2.168	ppbv #	67
20) Methylene Chloride	2.059	84	2642	0.341	ppbv #	76
26) Hexane	2.823	57	2496	0.119	ppbv #	59
34) 2-Butanone	2.557	43	4321	0.156	ppbv	98
35) Carbon Tetrachloride	3.761	117	1871	0.068	ppbv #	77
36) Benzene	3.648	78	8304m	0.208	ppbv	
53) Toluene	6.920	91	9366m	0.215	ppbv	

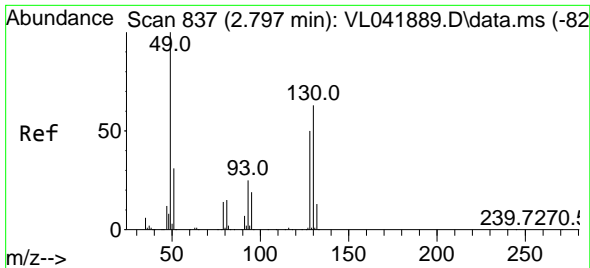
(#) = qualifier out of range (m) = manual integration (+) = signals summed

Data Path : Z:\voasrv\HPCHEM1\MSVOA_L\Data\VL021125\
 Data File : VL042000.D
 Acq On : 11 Feb 2025 12:46
 Operator : SY/MD
 Sample : Q1342-02
 Misc : 400mL/MSVOA_L
 ALS Vial : 6 Sample Multiplier: 1

Instrument :
 MSVOA_L
 ClientSampleId :
 OA1

Quant Time: Feb 11 22:19:40 2025
 Quant Method : Z:\voasrv\HPCHEM1\MSVOA_L\methods\VL011425AIR.M
 Quant Title : AIR ANALYSIS BY METHOD TO-15 Instrument: MSVOA_L Fri Aug 26 06:05:16 2022
 QLast Update : Tue Jan 14 23:15:42 2025
 Response via : Initial Calibration



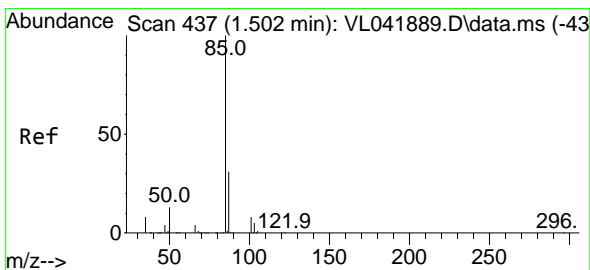
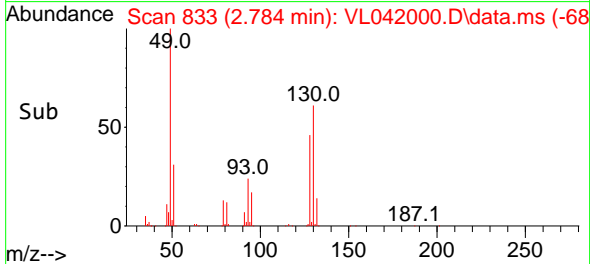
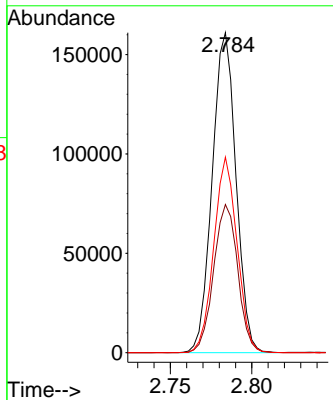
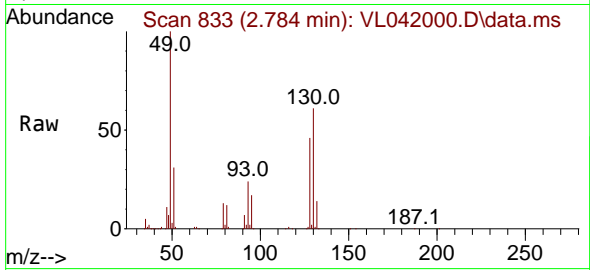


#1
 Bromochloromethane
 Concen: 10.000 ppbv
 RT: 2.784 min Scan# 81
 Delta R.T. -0.013 min
 Lab File: VL042000.D
 Acq: 11 Feb 2025 12:46

Instrument :
 MSVOA_L
 ClientSampleId :
 OA1

Tgt Ion: 49 Resp: 163409

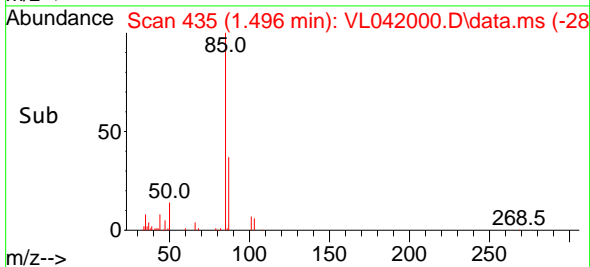
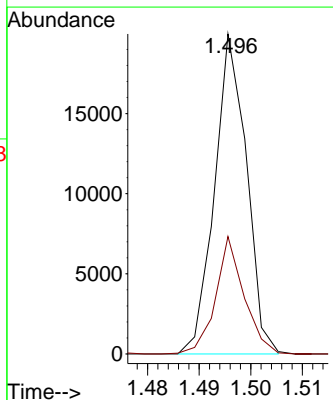
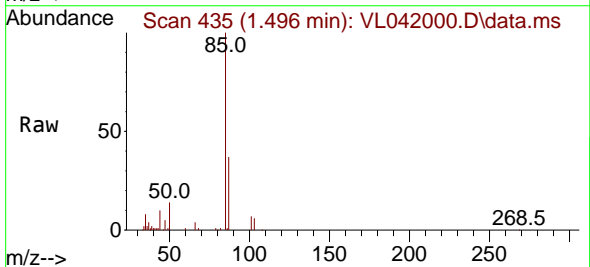
Ion	Ratio	Lower	Upper
49	100		
128	47.0	24.3	73.0
130	59.7	31.1	93.2

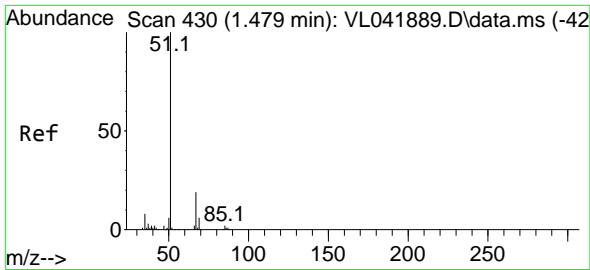


#2
 Dichlorodifluoromethane
 Concen: 0.386 ppbv
 RT: 1.496 min Scan# 435
 Delta R.T. -0.006 min
 Lab File: VL042000.D
 Acq: 11 Feb 2025 12:46

Tgt Ion: 85 Resp: 8586

Ion	Ratio	Lower	Upper
85	100		
87	36.5	24.9	37.3

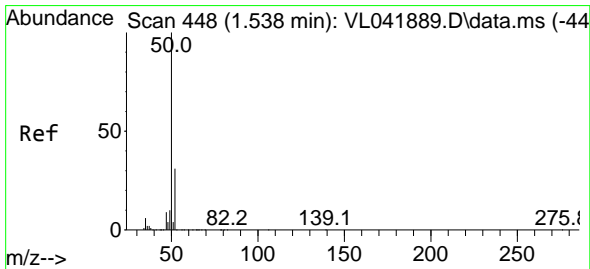
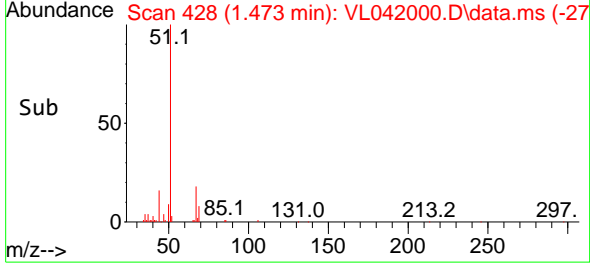
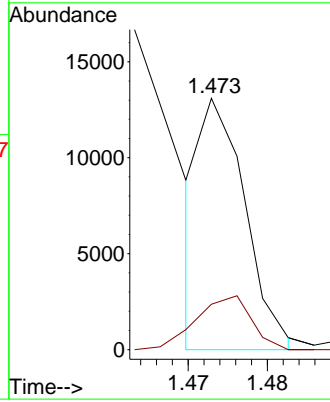
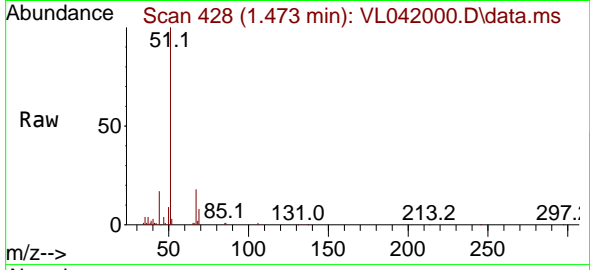




#3
 Chlorodifluoromethane
 Concen: 0.220 ppbv m
 RT: 1.473 min Scan# 41
 Delta R.T. -0.006 min
 Lab File: VL042000.D
 Acq: 11 Feb 2025 12:46

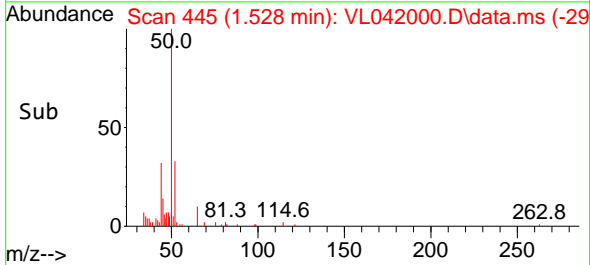
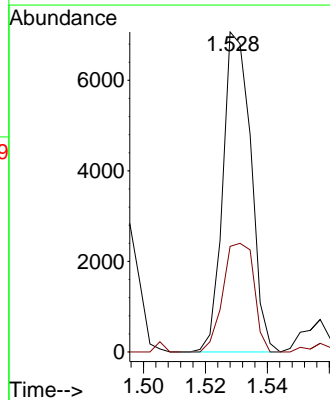
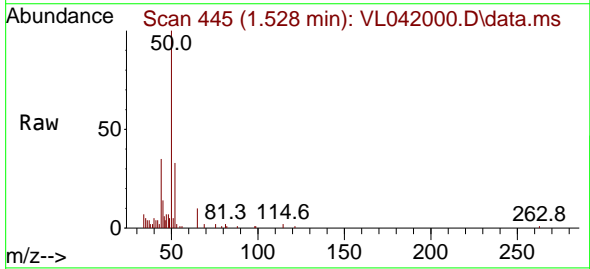
Instrument :
 MSVOA_L
 ClientSampleId :
 OA1

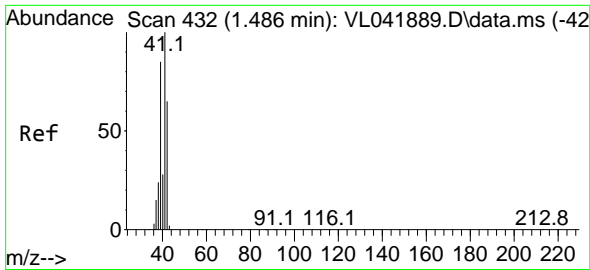
Tgt Ion: 51 Resp: 5138
 Ion Ratio Lower Upper
 51 100
 67 29.1 15.0 22.4#



#4
 Chloromethane
 Concen: 0.530 ppbv
 RT: 1.528 min Scan# 445
 Delta R.T. -0.010 min
 Lab File: VL042000.D
 Acq: 11 Feb 2025 12:46

Tgt Ion: 50 Resp: 4437
 Ion Ratio Lower Upper
 50 100
 52 33.0 24.6 36.8

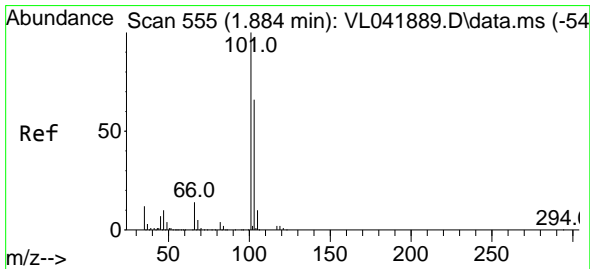
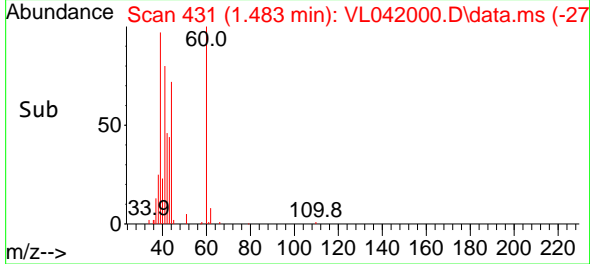
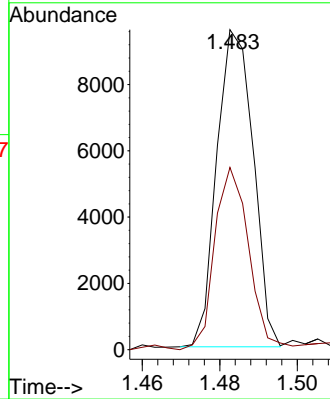
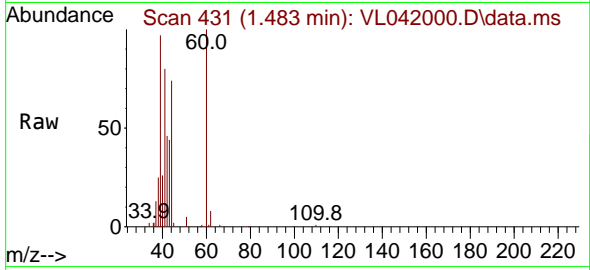




#9
 Propene
 Concen: 0.650 ppbv
 RT: 1.483 min Scan# 41
 Delta R.T. -0.003 min
 Lab File: VL042000.D
 Acq: 11 Feb 2025 12:46

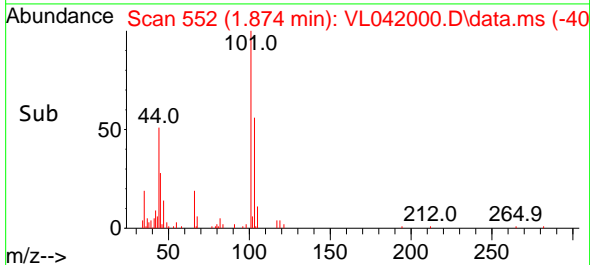
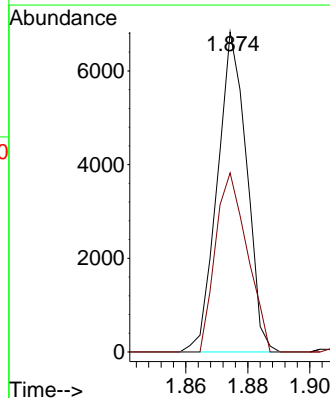
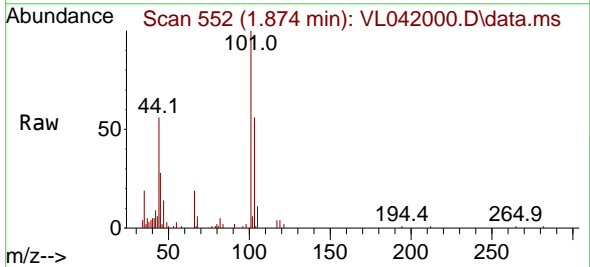
Instrument :
 MSVOA_L
 ClientSampleId :
 OA1

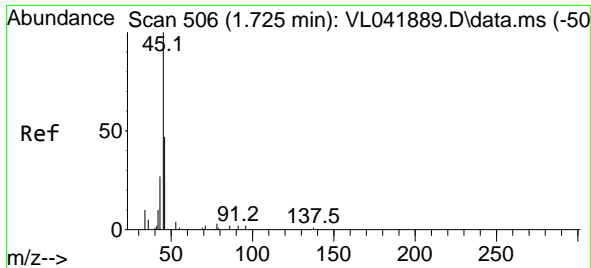
Tgt Ion: 41 Resp: 6246
 Ion Ratio Lower Upper
 41 100
 42 56.9 52.0 78.0



#11
 Trichlorofluoromethane
 Concen: 0.194 ppbv
 RT: 1.874 min Scan# 552
 Delta R.T. -0.010 min
 Lab File: VL042000.D
 Acq: 11 Feb 2025 12:46

Tgt Ion: 101 Resp: 4482
 Ion Ratio Lower Upper
 101 100
 103 55.9 53.1 79.7

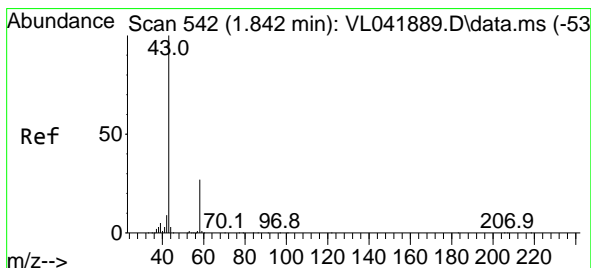
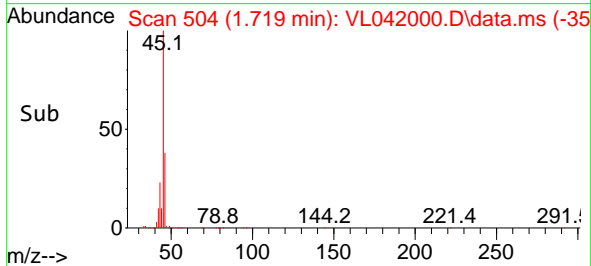
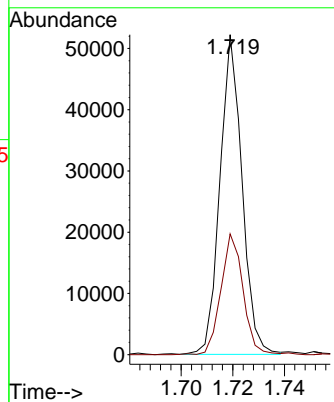
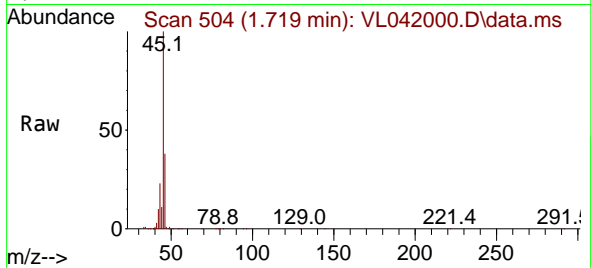




#13
 Ethanol
 Concen: 43.982 ppbv
 RT: 1.719 min Scan# 506
 Delta R.T. -0.006 min
 Lab File: VL042000.D
 Acq: 11 Feb 2025 12:46

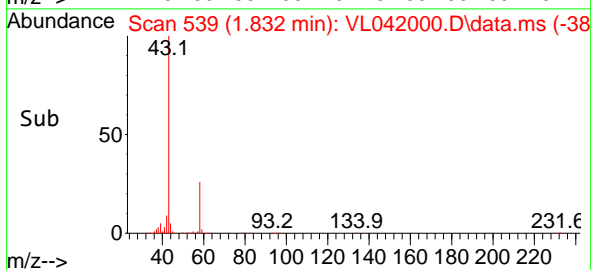
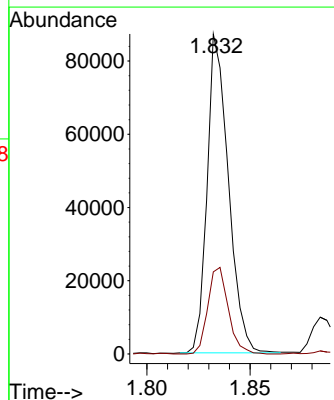
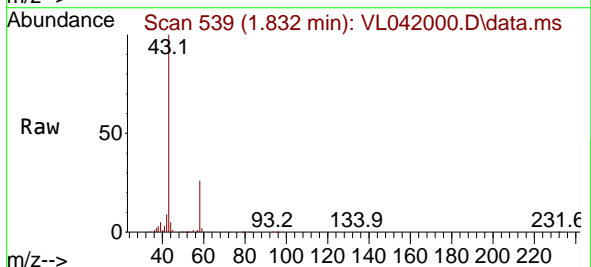
Instrument :
 MSVOA_L
 ClientSampleId :
 OA1

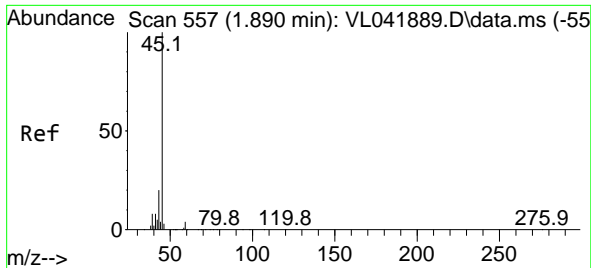
Tgt Ion: 45 Resp: 30945
 Ion Ratio Lower Upper
 45 100
 46 38.3 18.1 72.5



#15
 Acetone
 Concen: 3.173 ppbv
 RT: 1.832 min Scan# 539
 Delta R.T. -0.010 min
 Lab File: VL042000.D
 Acq: 11 Feb 2025 12:46

Tgt Ion: 43 Resp: 62268
 Ion Ratio Lower Upper
 43 100
 58 26.3 21.9 32.9

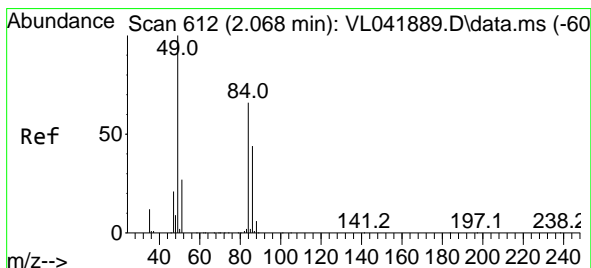
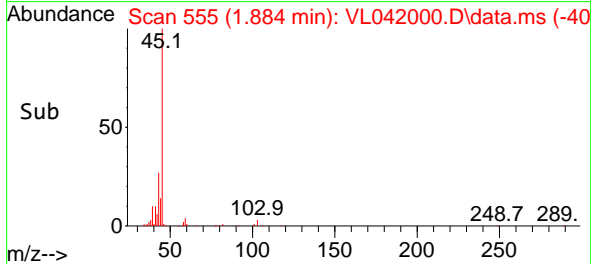
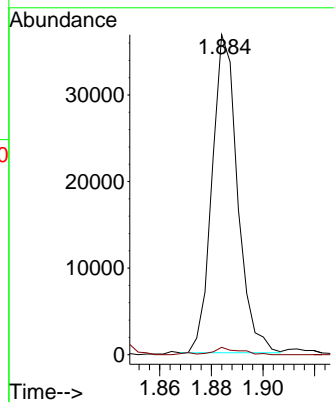
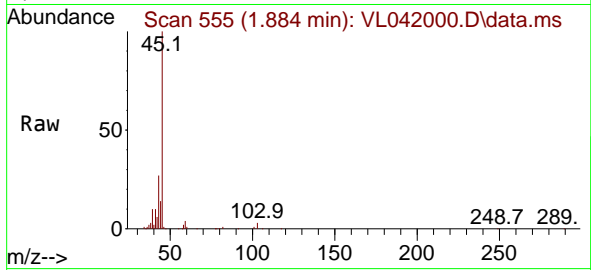




#19
 Isopropyl Alcohol
 Concen: 2.168 ppbv
 RT: 1.884 min Scan# 511
 Delta R.T. -0.006 min
 Lab File: VL042000.D
 Acq: 11 Feb 2025 12:46

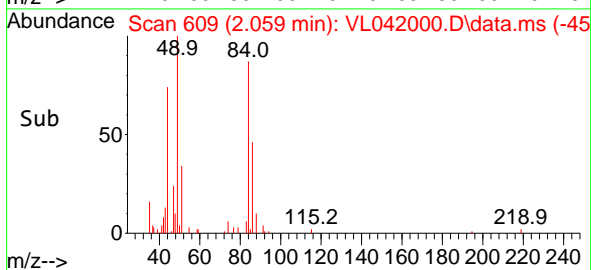
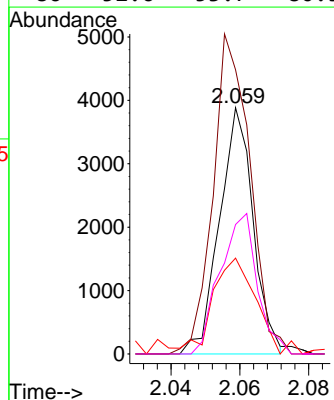
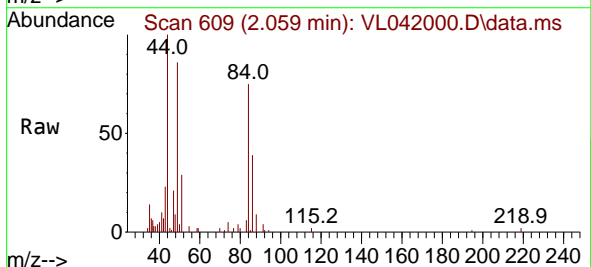
Instrument :
 MSVOA_L
 ClientSampleId :
 OA1

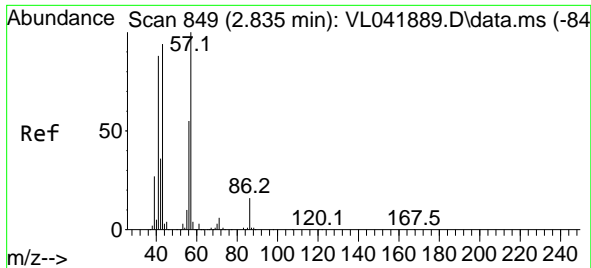
Tgt Ion: 45 Resp: 25228
 Ion Ratio Lower Upper
 45 100
 58 65.1 35.0 52.6#



#20
 Methylene Chloride
 Concen: 0.341 ppbv
 RT: 2.059 min Scan# 609
 Delta R.T. -0.010 min
 Lab File: VL042000.D
 Acq: 11 Feb 2025 12:46

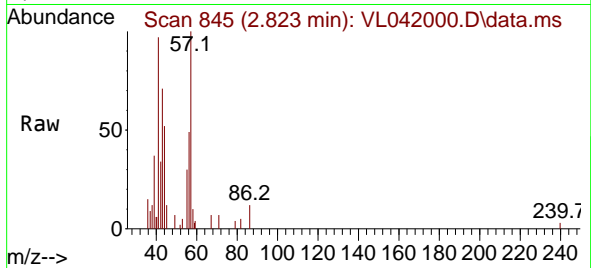
Tgt Ion: 84 Resp: 2642
 Ion Ratio Lower Upper
 84 100
 49 113.3 123.1 184.7#
 51 38.9 35.8 53.8
 86 52.6 53.7 80.5#



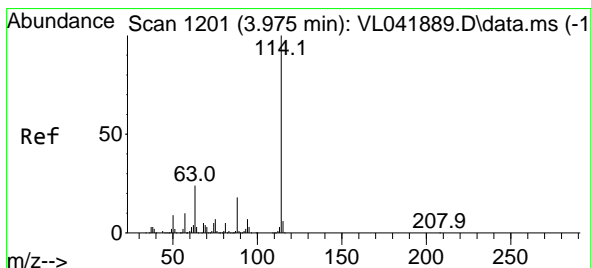
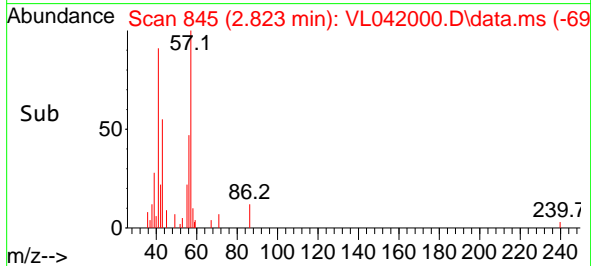
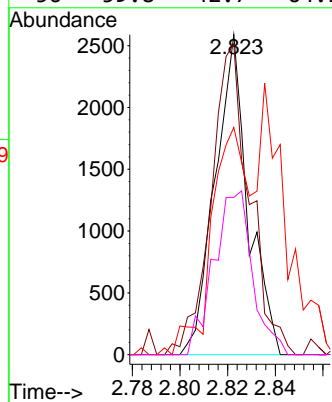


#26
 Hexane
 Concen: 0.119 ppbv
 RT: 2.823 min Scan# 84
 Delta R.T. -0.013 min
 Lab File: VL042000.D
 Acq: 11 Feb 2025 12:46

Instrument :
 MSVOA_L
 ClientSampleId :
 OA1

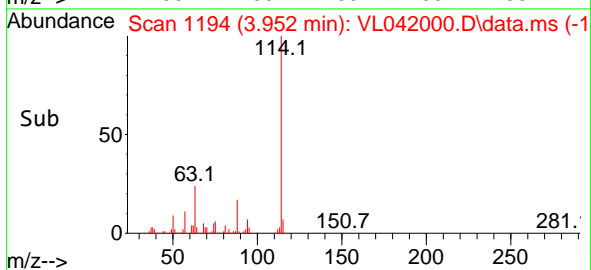
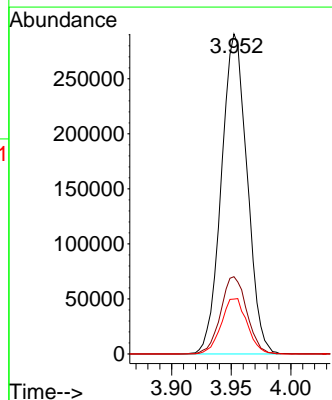
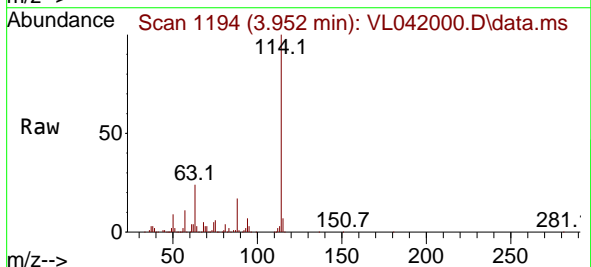


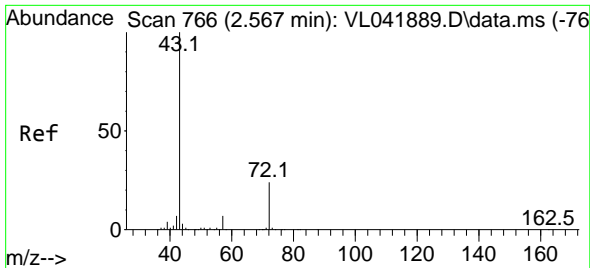
Tgt Ion: 57 Resp: 2496
 Ion Ratio Lower Upper
 57 100
 41 114.5 73.8 110.8#
 43 152.6 197.3 295.9#
 56 59.8 42.7 64.1



#33
 1,4-Difluorobenzene
 Concen: 10.000 ppbv
 RT: 3.952 min Scan# 1194
 Delta R.T. -0.023 min
 Lab File: VL042000.D
 Acq: 11 Feb 2025 12:46

Tgt Ion:114 Resp: 436244
 Ion Ratio Lower Upper
 114 100
 63 24.6 19.8 29.6
 88 17.5 14.4 21.6

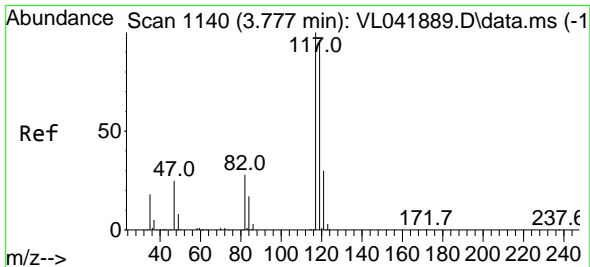
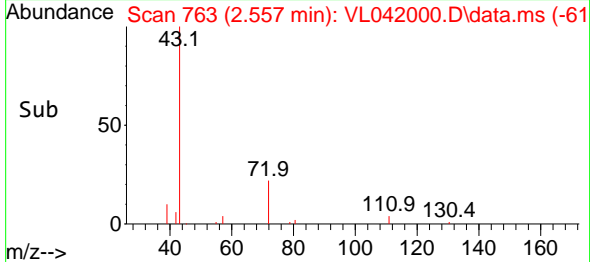
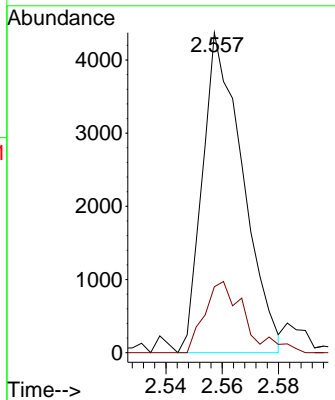
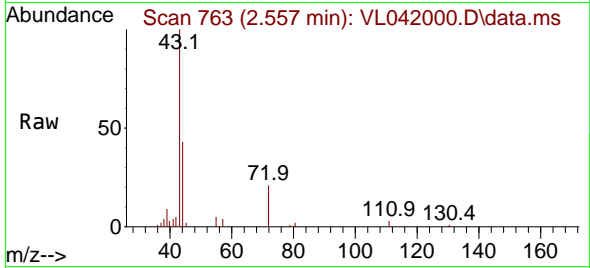




#34
 2-Butanone
 Concen: 0.156 ppbv
 RT: 2.557 min Scan# 71
 Delta R.T. -0.010 min
 Lab File: VL042000.D
 Acq: 11 Feb 2025 12:46

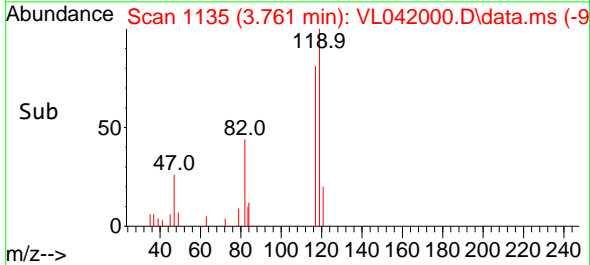
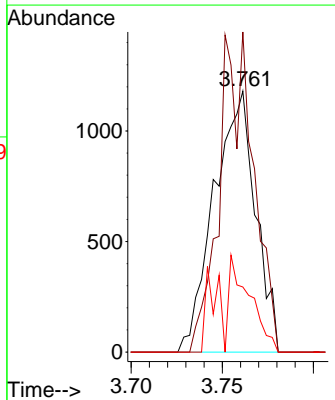
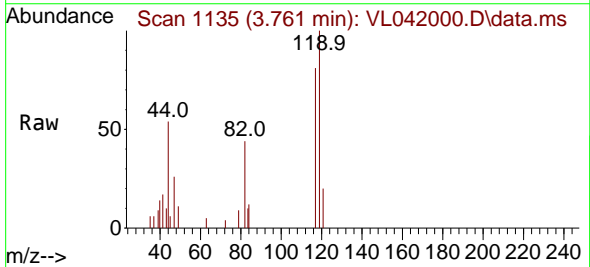
Instrument : MSVOA_L
 ClientSampleId : OA1

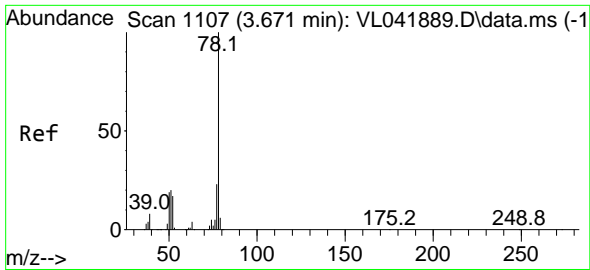
Tgt Ion: 43 Resp: 4321
 Ion Ratio Lower Upper
 43 100
 72 22.4 18.6 28.0



#35
 Carbon Tetrachloride
 Concen: 0.068 ppbv
 RT: 3.761 min Scan# 1135
 Delta R.T. -0.016 min
 Lab File: VL042000.D
 Acq: 11 Feb 2025 12:46

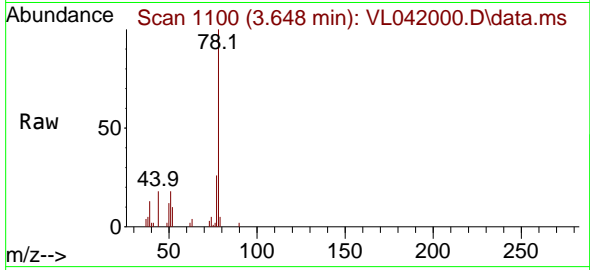
Tgt Ion: 117 Resp: 1871
 Ion Ratio Lower Upper
 117 100
 119 122.7 76.9 115.3#
 121 24.9 23.8 35.6



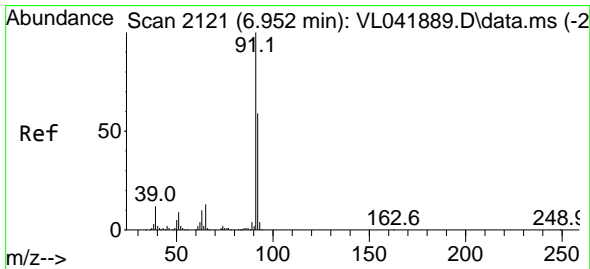
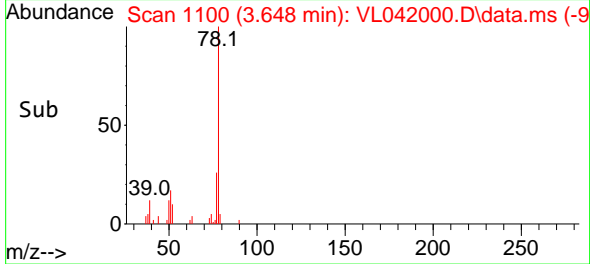
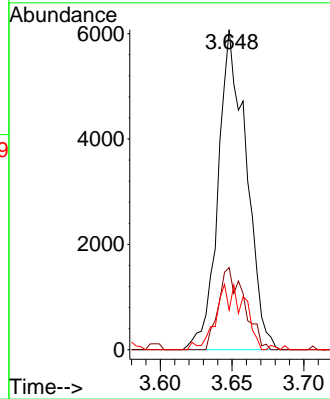


#36
Benzene
Concen: 0.208 ppbv m
RT: 3.648 min Scan# 1107
Delta R.T. -0.023 min
Lab File: VL042000.D
Acq: 11 Feb 2025 12:46

Instrument : MSVOA_L
ClientSampleId : OA1

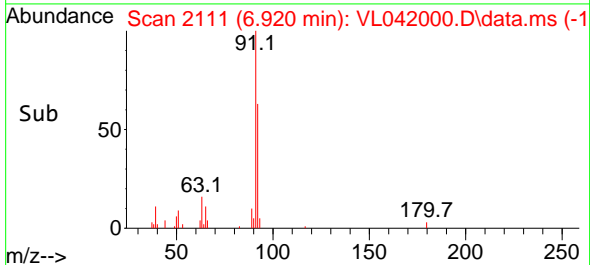
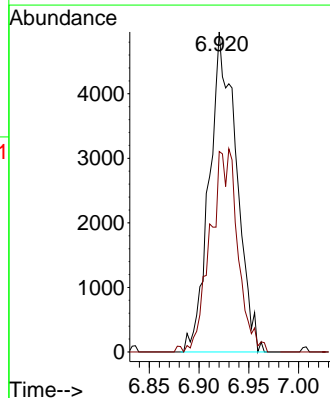
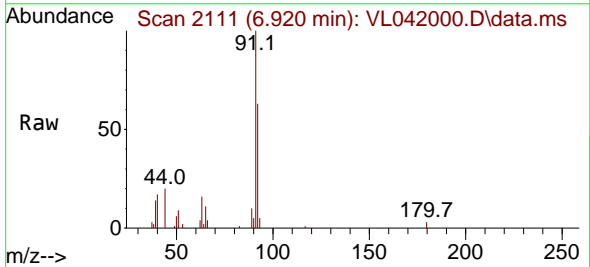


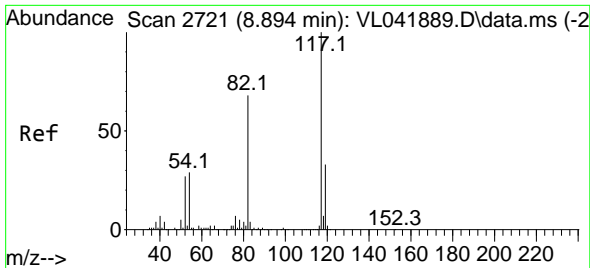
Tgt Ion: 78 Resp: 8304
Ion Ratio Lower Upper
78 100
77 25.6 18.1 27.1
50 12.3 15.2 22.8#



#53
Toluene
Concen: 0.215 ppbv m
RT: 6.920 min Scan# 2111
Delta R.T. -0.032 min
Lab File: VL042000.D
Acq: 11 Feb 2025 12:46

Tgt Ion: 91 Resp: 9366
Ion Ratio Lower Upper
91 100
92 0.0 47.4 71.0#



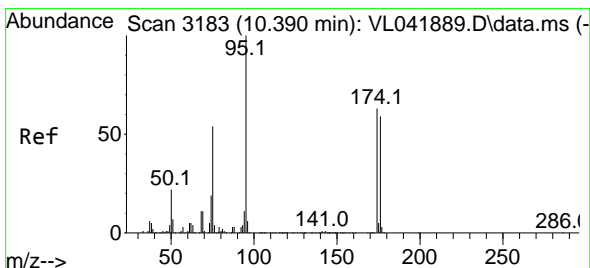
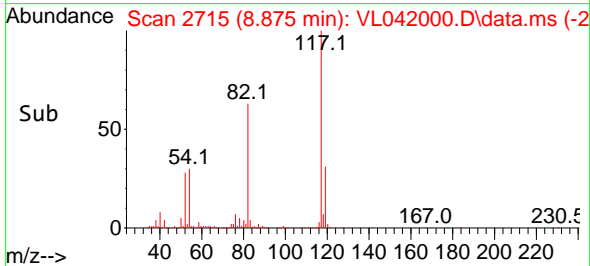
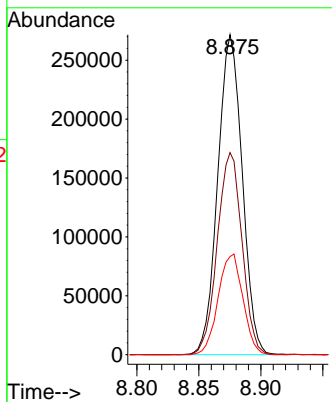
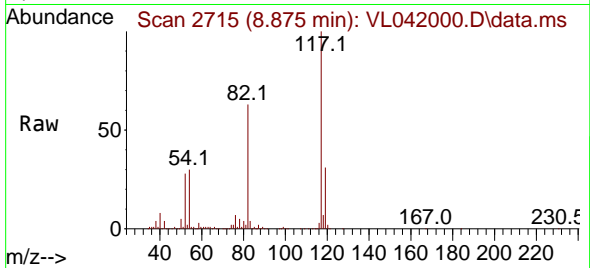


#55
 Chlorobenzene-d5
 Concen: 10.000 ppbv
 RT: 8.875 min Scan# 21
 Delta R.T. -0.019 min
 Lab File: VL042000.D
 Acq: 11 Feb 2025 12:46

Instrument :
 MSVOA_L
 ClientSampleId :
 OA1

Tgt Ion:117 Resp: 374213

Ion	Ratio	Lower	Upper
117	100		
82	63.8	54.2	81.4
119	31.8	25.0	37.6



#68
 1-Bromo-4-Fluorobenzene
 Concen: 9.827 ppbv
 RT: 10.370 min Scan# 3177
 Delta R.T. -0.019 min
 Lab File: VL042000.D
 Acq: 11 Feb 2025 12:46

Tgt Ion: 95 Resp: 289633

Ion	Ratio	Lower	Upper
95	100		
174	59.8	49.0	73.4
175	4.4	3.8	5.8

