

Data Path : Z:\pestpcbsrv\HPCHEM1\ECD_P\Data\PP012825\
 Data File : PP069268.D
 Signal(s) : Signal #1: ECD1A.ch Signal #2: ECD2B.ch
 Acq On : 28 Jan 2025 10:26
 Operator : YP\AJ
 Sample : AR1660ICC250
 Misc :
 ALS Vial : 6 Sample Multiplier: 1

Instrument :
 ECD_P
ClientSampleId :
 AR1660ICC250

Integration File signal 1: autoint1.e
 Integration File signal 2: autoint2.e
 Quant Time: Jan 28 10:49:33 2025
 Quant Method : Z:\pestpcbsrv\HPCHEM1\ECD_P\methods\PP012825.M
 Quant Title : GC EXTRACTABLES
 QLast Update : Tue Jan 28 10:41:22 2025
 Response via : Initial Calibration
 Integrator: ChemStation

Volume Inj. : 2 µl
 Signal #1 Phase : ZB-MR1 Signal #2 Phase: ZB-MR2
 Signal #1 Info : 30Mx0.32mmx 0.50µ Signal #2 Info : 30M x 0.32mm x 0.25µm

Compound	RT#1	RT#2	Resp#1	Resp#2	ng/ml	ng/ml

System Monitoring Compounds						
1) SA Tetrachlo...	4.534	3.840	39276963	24793376	26.194	26.354
2) SA Decachlor...	10.275	8.911	31087394	33225807	27.041	28.951
Target Compounds						
3) L1 AR-1016-1	5.688	4.933	12563303	9488743	264.330	277.802
4) L1 AR-1016-2	5.711	4.953	18984700	12921784	268.817	273.521
5) L1 AR-1016-3	5.773	5.130	12148331	7146935	278.728	274.217
6) L1 AR-1016-4	5.870	5.172	9492997	5871865	264.240	277.672
7) L1 AR-1016-5	6.164	5.388	9189623	7810918	266.859	283.693
31) L7 AR-1260-1	7.284	6.426	16281711	13934776	270.640	279.024
32) L7 AR-1260-2	7.538	6.615	21334462	17223796	274.253	277.488
33) L7 AR-1260-3	7.897	6.770	17319183	16433686	271.253	282.919
34) L7 AR-1260-4	8.121	7.242	18337608	13582568	274.347	277.980
35) L7 AR-1260-5	8.443	7.483	36124405	31649507	269.836	271.772

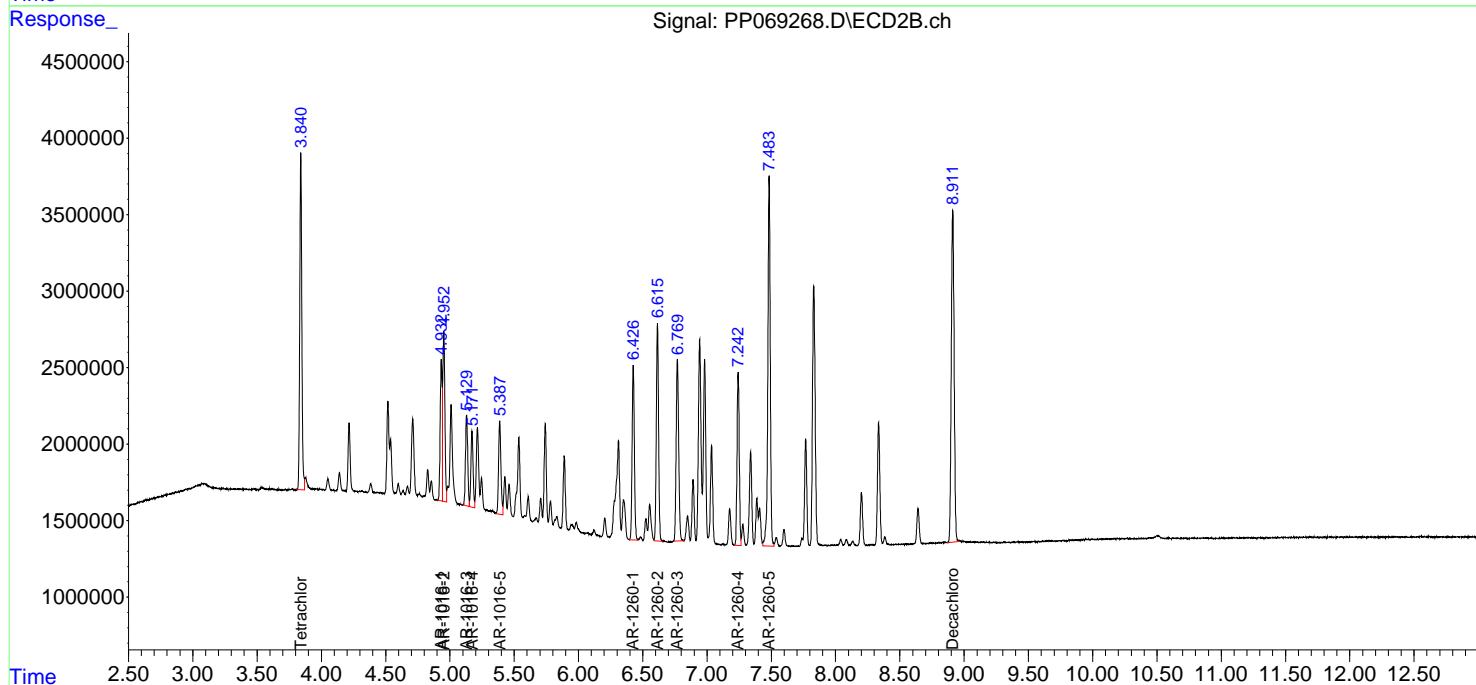
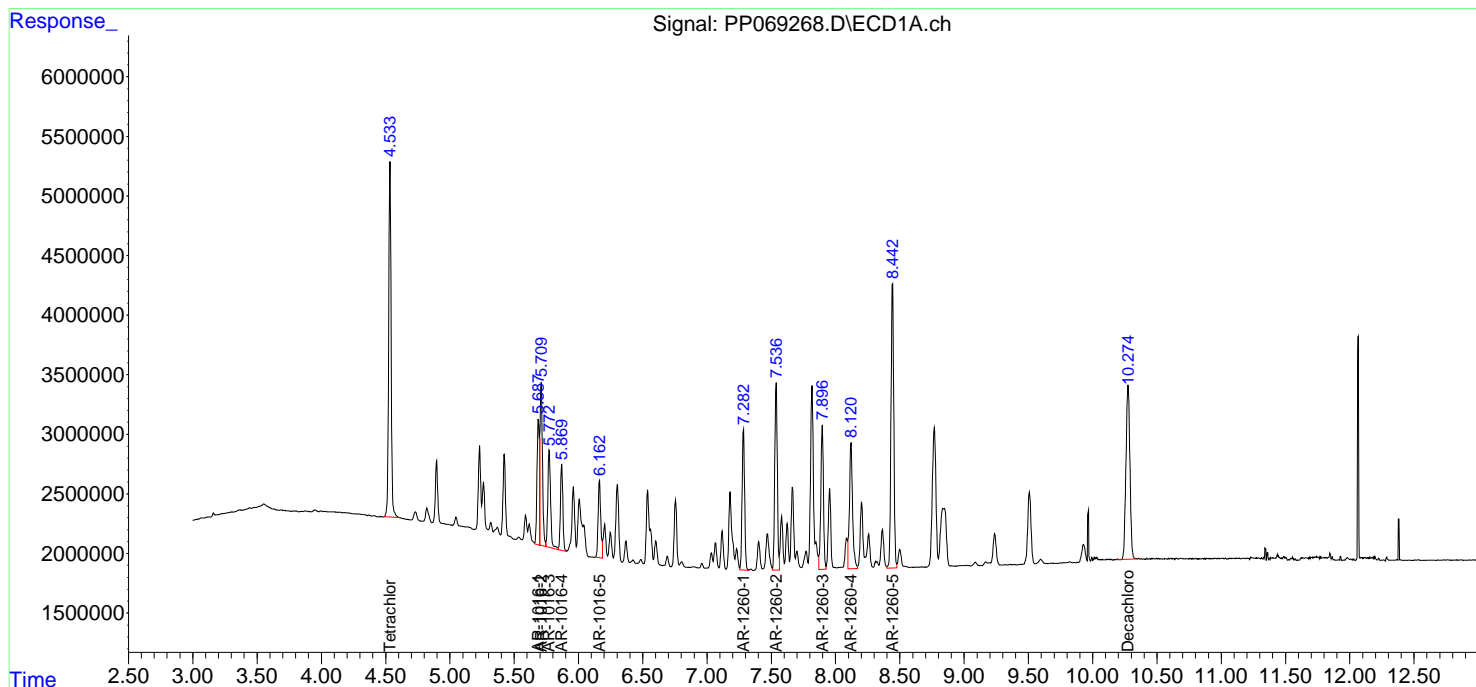
(f)=RT Delta > 1/2 Window (#)=Amounts differ by > 25% (m)=manual int.

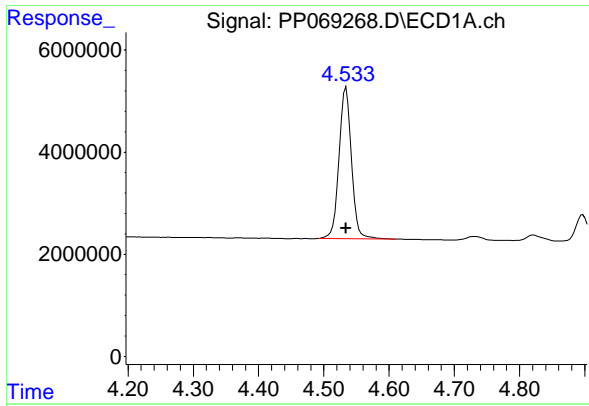
Data Path : Z:\pestpcbsrv\HPCHEM1\ECD_P\Data\PP012825\
 Data File : PP069268.D
 Signal(s) : Signal #1: ECD1A.ch Signal #2: ECD2B.ch
 Acq On : 28 Jan 2025 10:26
 Operator : YP\AJ
 Sample : AR1660ICC250
 Misc :
 ALS Vial : 6 Sample Multiplier: 1

Instrument :
 ECD_P
 ClientSampleId :
 AR1660ICC250

Integration File signal 1: autoint1.e
 Integration File signal 2: autoint2.e
 Quant Time: Jan 28 10:49:33 2025
 Quant Method : Z:\pestpcbsrv\HPCHEM1\ECD_P\methods\PP012825.M
 Quant Title : GC EXTRACTABLES
 QLast Update : Tue Jan 28 10:41:22 2025
 Response via : Initial Calibration
 Integrator: ChemStation

Volume Inj. : 2 µl
 Signal #1 Phase : ZB-MR1 Signal #2 Phase: ZB-MR2
 Signal #1 Info : 30Mx0.32mmx 0.50µm Signal #2 Info : 30M x 0.32mm x 0.25µm

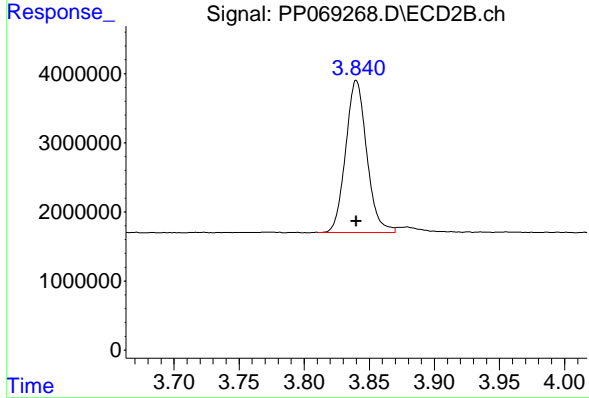




#1 Tetrachloro-m-xylene

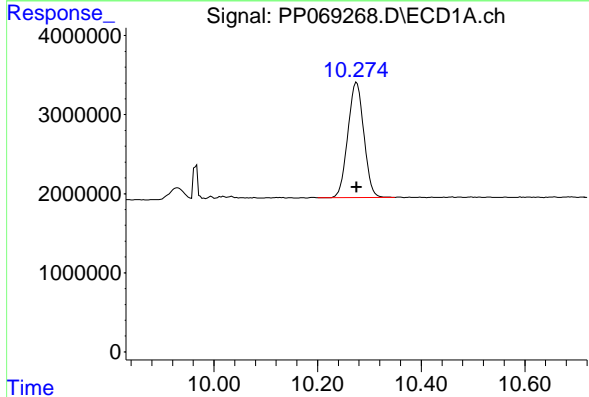
R.T.: 4.534 min
 Delta R.T.: 0.000 min
 Response: 39276963
 Conc: 26.19 ng/ml

Instrument : ECD_P
 ClientSampleId : AR1660ICC250



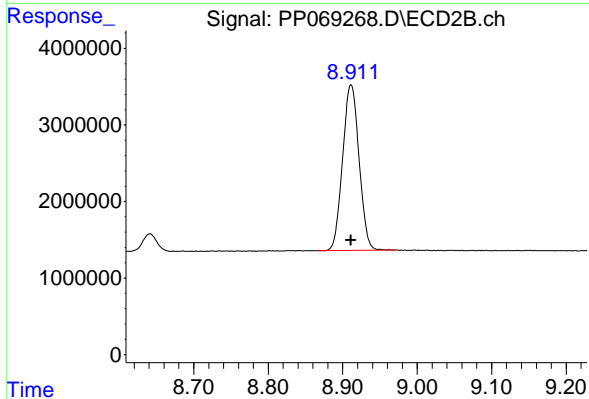
#1 Tetrachloro-m-xylene

R.T.: 3.840 min
 Delta R.T.: 0.000 min
 Response: 24793376
 Conc: 26.35 ng/ml



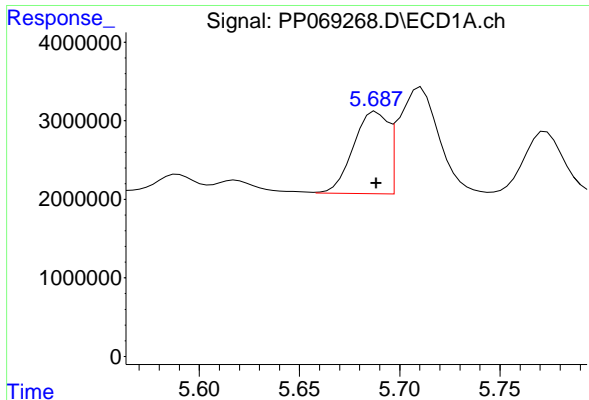
#2 Decachlorobiphenyl

R.T.: 10.275 min
 Delta R.T.: 0.000 min
 Response: 31087394
 Conc: 27.04 ng/ml



#2 Decachlorobiphenyl

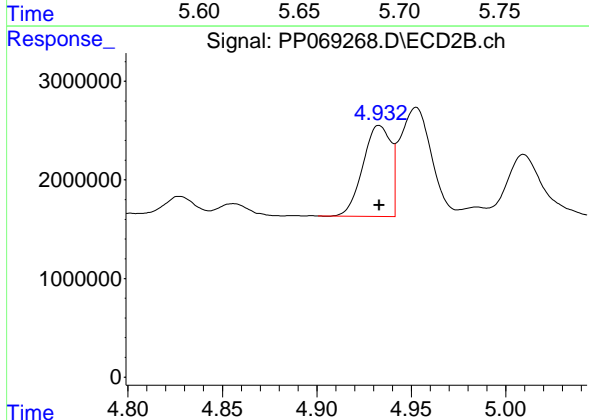
R.T.: 8.911 min
 Delta R.T.: 0.000 min
 Response: 33225807
 Conc: 28.95 ng/ml



#3 AR-1016-1

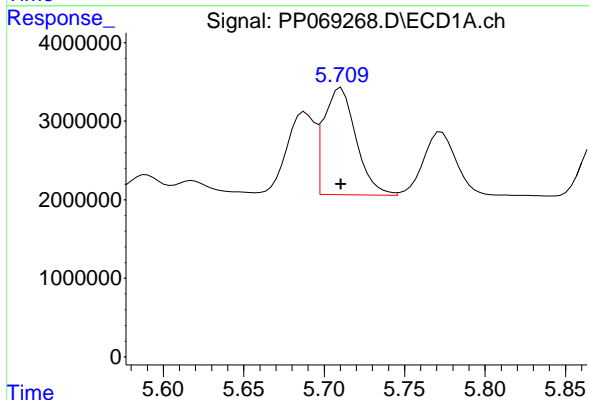
R.T.: 5.688 min
 Delta R.T.: 0.000 min
 Response: 12563303
 Conc: 264.33 ng/ml

Instrument :
 ECD_P
 ClientSampleId :
 AR1660ICC250



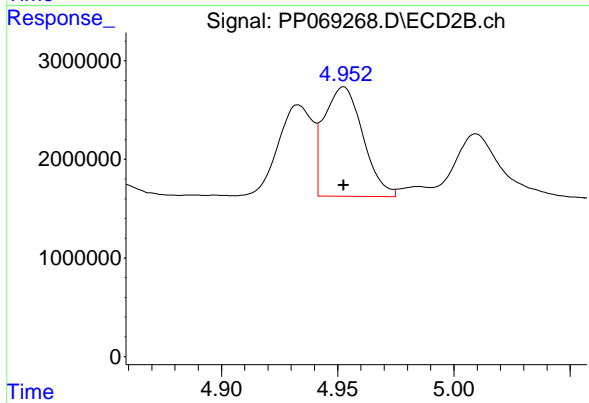
#3 AR-1016-1

R.T.: 4.933 min
 Delta R.T.: 0.000 min
 Response: 9488743
 Conc: 277.80 ng/ml



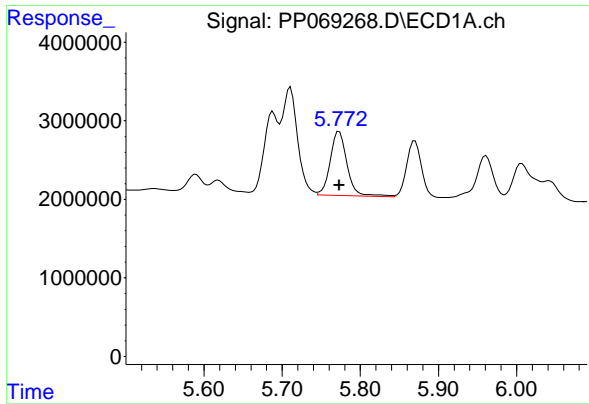
#4 AR-1016-2

R.T.: 5.711 min
 Delta R.T.: 0.000 min
 Response: 18984700
 Conc: 268.82 ng/ml



#4 AR-1016-2

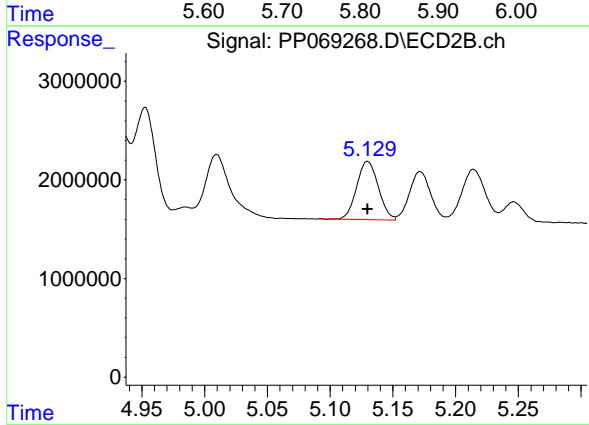
R.T.: 4.953 min
 Delta R.T.: 0.000 min
 Response: 12921784
 Conc: 273.52 ng/ml



#5 AR-1016-3

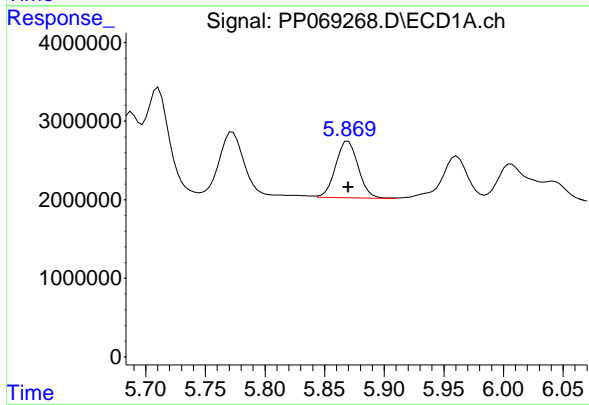
R.T.: 5.773 min
 Delta R.T.: 0.000 min
 Response: 12148331
 Conc: 278.73 ng/ml

Instrument : ECD_P
 ClientSampleId : AR1660ICC250



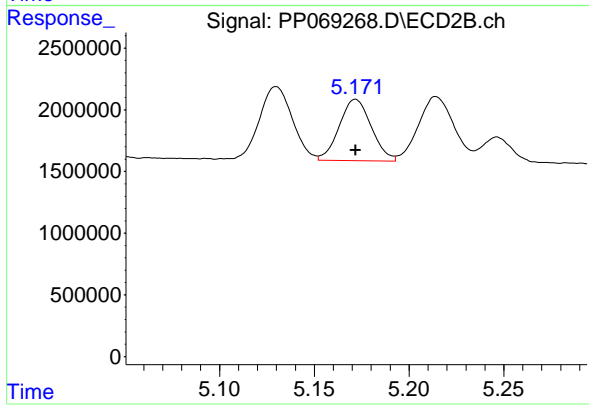
#5 AR-1016-3

R.T.: 5.130 min
 Delta R.T.: 0.000 min
 Response: 7146935
 Conc: 274.22 ng/ml



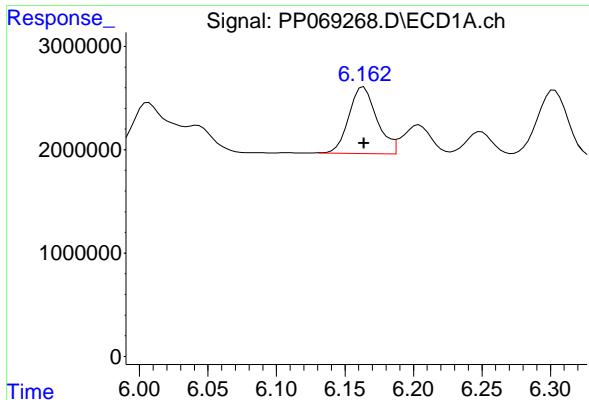
#6 AR-1016-4

R.T.: 5.870 min
 Delta R.T.: 0.000 min
 Response: 9492997
 Conc: 264.24 ng/ml



#6 AR-1016-4

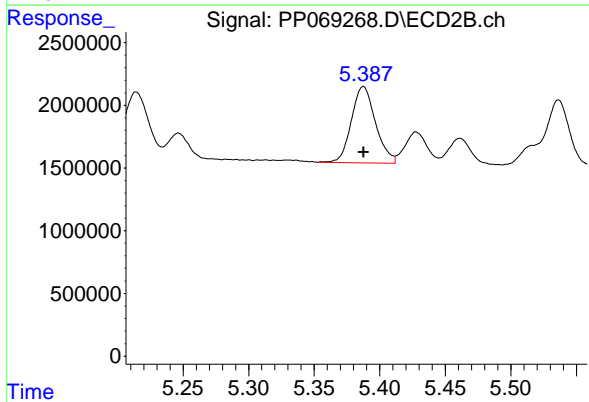
R.T.: 5.172 min
 Delta R.T.: 0.000 min
 Response: 5871865
 Conc: 277.67 ng/ml



#7 AR-1016-5

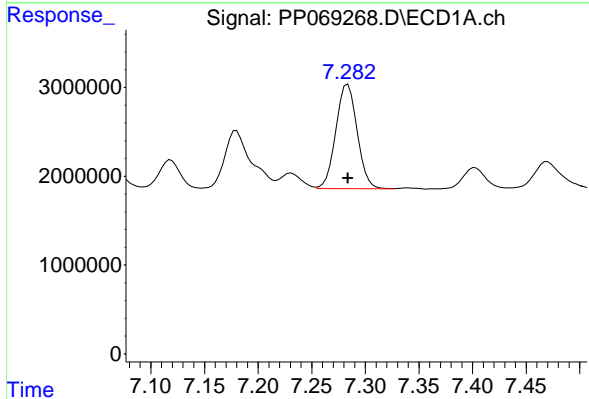
R.T.: 6.164 min
Delta R.T.: 0.000 min
Response: 9189623
Conc: 266.86 ng/ml

Instrument :
ECD_P
ClientSampleId :
AR1660ICC250



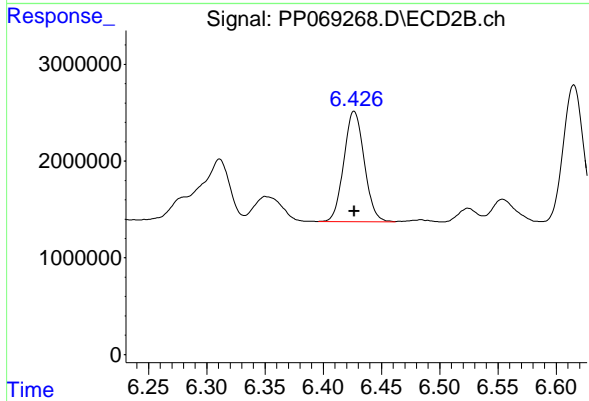
#7 AR-1016-5

R.T.: 5.388 min
Delta R.T.: 0.000 min
Response: 7810918
Conc: 283.69 ng/ml



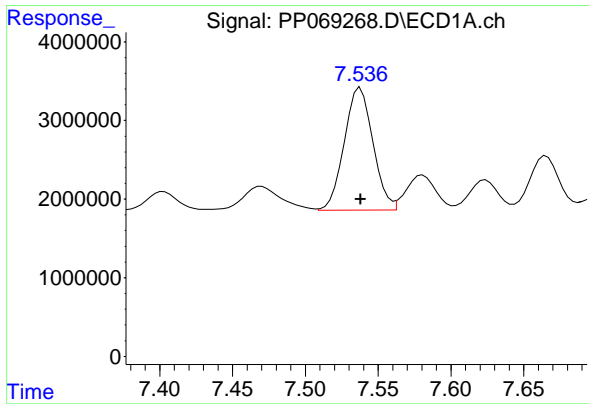
#31 AR-1260-1

R.T.: 7.284 min
Delta R.T.: 0.000 min
Response: 16281711
Conc: 270.64 ng/ml



#31 AR-1260-1

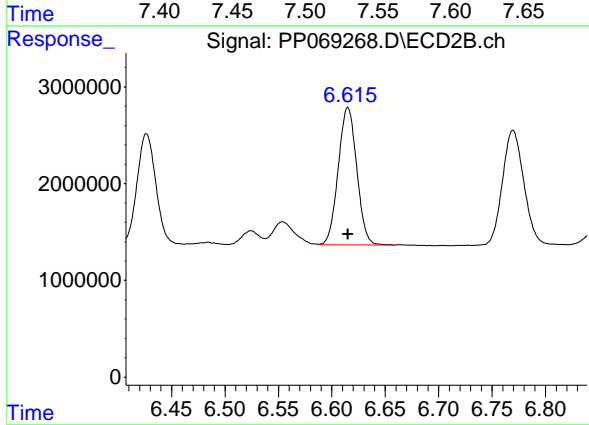
R.T.: 6.426 min
Delta R.T.: 0.000 min
Response: 13934776
Conc: 279.02 ng/ml



#32 AR-1260-2

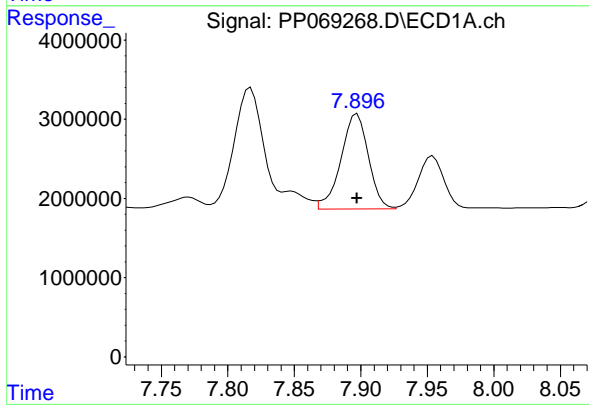
R.T.: 7.538 min
 Delta R.T.: 0.000 min
 Response: 21334462
 Conc: 274.25 ng/ml

Instrument :
 ECD_P
 ClientSampleId :
 AR1660ICC250



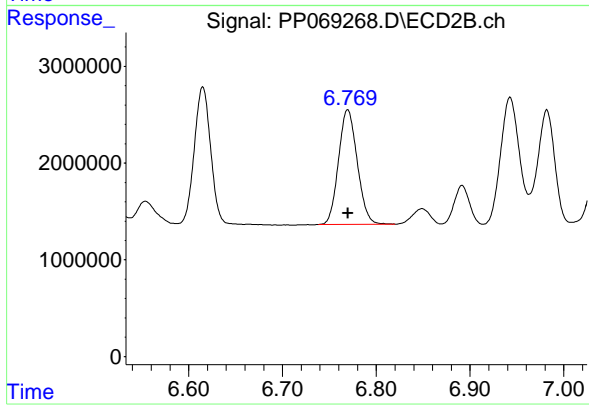
#32 AR-1260-2

R.T.: 6.615 min
 Delta R.T.: 0.000 min
 Response: 17223796
 Conc: 277.49 ng/ml



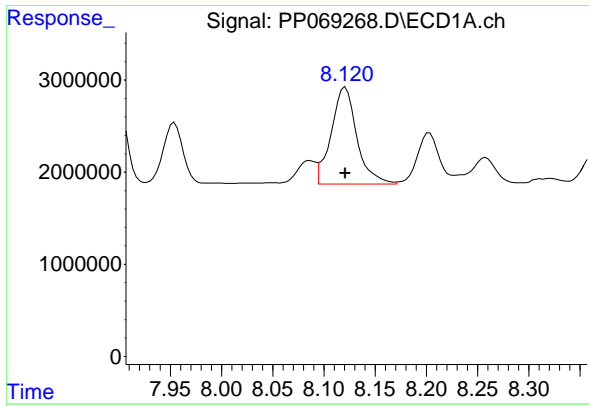
#33 AR-1260-3

R.T.: 7.897 min
 Delta R.T.: 0.000 min
 Response: 17319183
 Conc: 271.25 ng/ml



#33 AR-1260-3

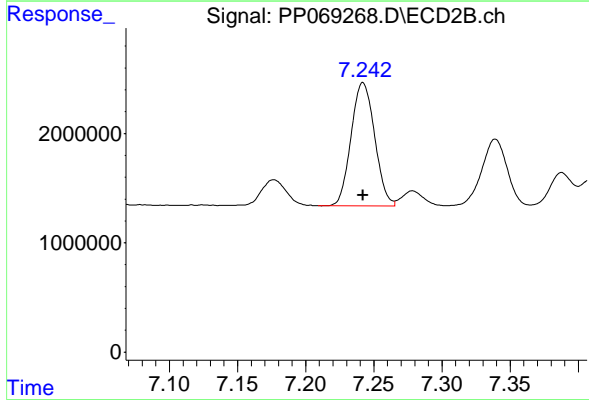
R.T.: 6.770 min
 Delta R.T.: 0.000 min
 Response: 16433686
 Conc: 282.92 ng/ml



#34 AR-1260-4

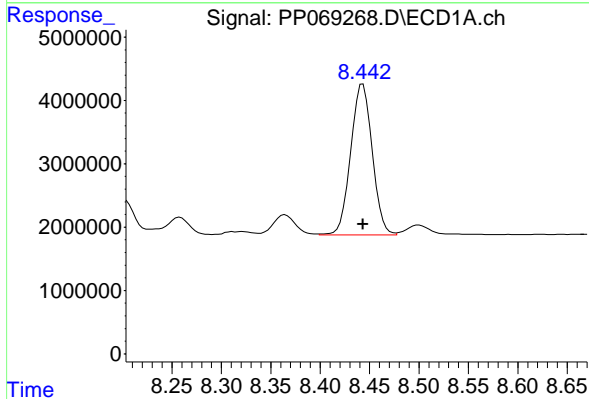
R.T.: 8.121 min
 Delta R.T.: 0.000 min
 Response: 18337608
 Conc: 274.35 ng/ml

Instrument :
 ECD_P
 ClientSampleId :
 AR1660ICC250



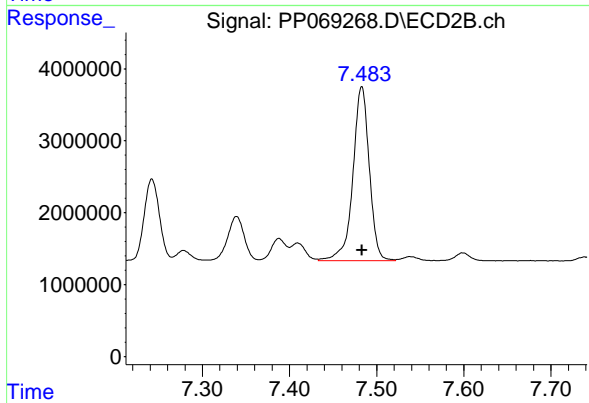
#34 AR-1260-4

R.T.: 7.242 min
 Delta R.T.: 0.000 min
 Response: 13582568
 Conc: 277.98 ng/ml



#35 AR-1260-5

R.T.: 8.443 min
 Delta R.T.: 0.000 min
 Response: 36124405
 Conc: 269.84 ng/ml



#35 AR-1260-5

R.T.: 7.483 min
 Delta R.T.: 0.000 min
 Response: 31649507
 Conc: 271.77 ng/ml