

Data Path : Z:\pestpcbsrv\HPCHEM1\ECD_P\Data\PP012825\
 Data File : PP069276.D
 Signal(s) : Signal #1: ECD1A.ch Signal #2: ECD2B.ch
 Acq On : 28 Jan 2025 13:09
 Operator : YP\AJ
 Sample : AR1242ICC050
 Misc :
 ALS Vial : 14 Sample Multiplier: 1

Instrument :
 ECD_P
ClientSampleId :
 AR1242ICC050

Integration File signal 1: autoint1.e
 Integration File signal 2: autoint2.e
 Quant Time: Jan 28 13:32:34 2025
 Quant Method : Z:\pestpcbsrv\HPCHEM1\ECD_P\methods\PP012825.M
 Quant Title : GC EXTRACTABLES
 QLast Update : Tue Jan 28 13:32:21 2025
 Response via : Initial Calibration
 Integrator: ChemStation

Volume Inj. : 2 µl
 Signal #1 Phase : ZB-MR1 Signal #2 Phase: ZB-MR2
 Signal #1 Info : 30Mx0.32mmx 0.50µ Signal #2 Info : 30M x 0.32mm x 0.25µm

Compound	RT#1	RT#2	Resp#1	Resp#2	ng/ml	ng/ml

System Monitoring Compounds						
1) SA Tetrachlo...	4.535	3.840	5712040	3880861	4.008	4.186
2) SA Decachlor...	10.276	8.912	4701402	5291649	4.368	4.750
Target Compounds						
16) L4 AR-1242-1	5.689	4.934	2048207	1270163	49.111	44.054
17) L4 AR-1242-2	5.711	4.953	2705826	1653863	45.869	41.979
18) L4 AR-1242-3	5.774	5.131	1740514	1035839	46.916	46.029
19) L4 AR-1242-4	5.870	5.215	1808303	993205	55.140	46.020
20) L4 AR-1242-5	6.603	5.741	1440165	1338070	44.198	46.512

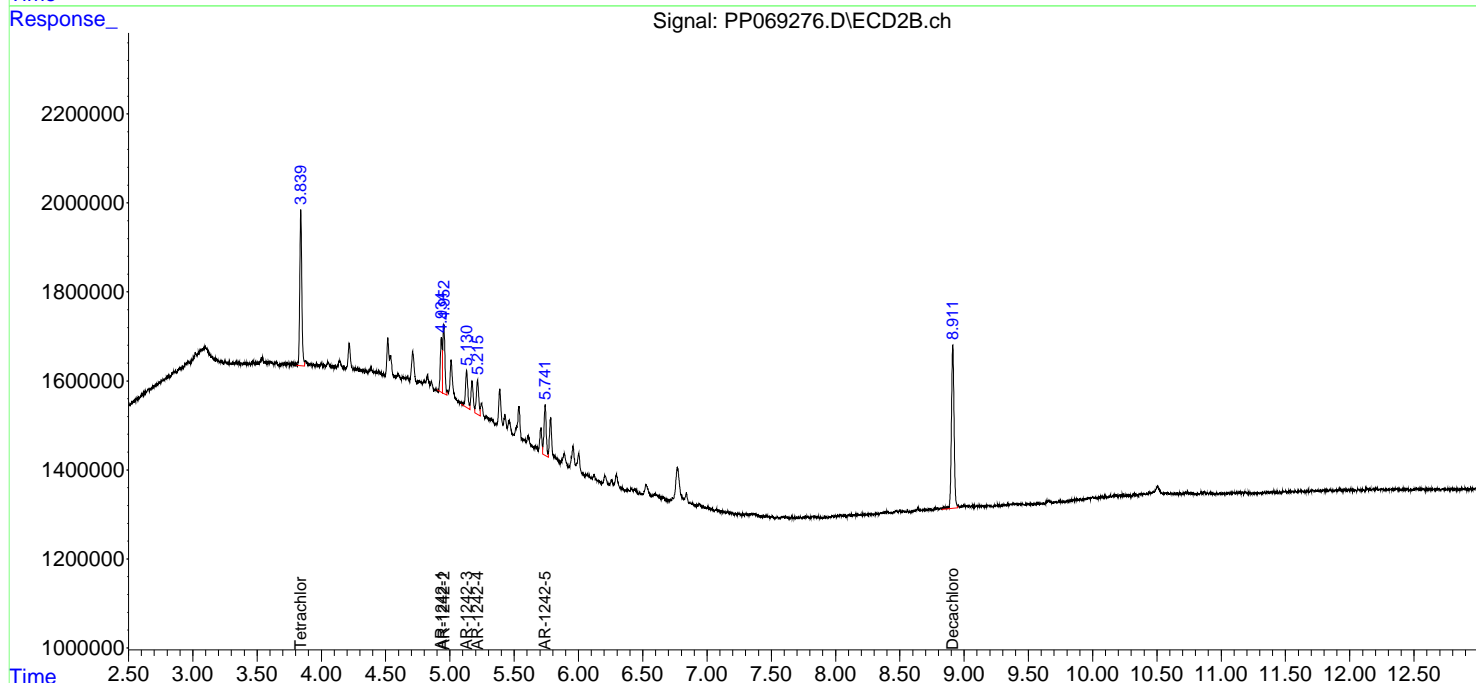
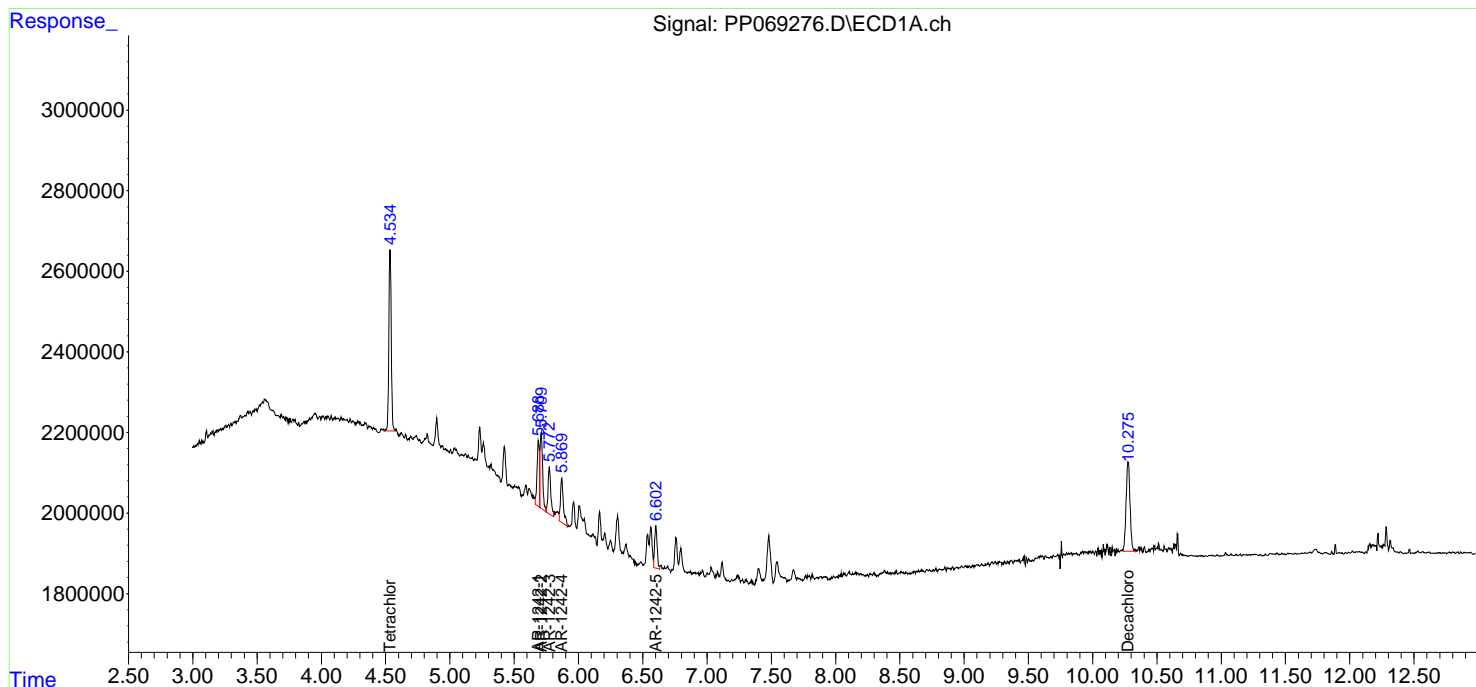
(f)=RT Delta > 1/2 Window (#)=Amounts differ by > 25% (m)=manual int.

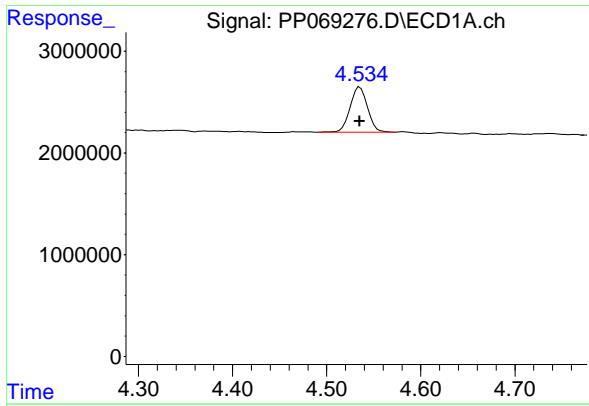
Data Path : Z:\pestpcbsrv\HPCHEM1\ECD_P\Data\PP012825\
 Data File : PP069276.D
 Signal(s) : Signal #1: ECD1A.ch Signal #2: ECD2B.ch
 Acq On : 28 Jan 2025 13:09
 Operator : YP\AJ
 Sample : AR1242IC050
 Misc :
 ALS Vial : 14 Sample Multiplier: 1

Instrument :
 ECD_P
 ClientSampleId :
 AR1242IC050

Integration File signal 1: autoint1.e
 Integration File signal 2: autoint2.e
 Quant Time: Jan 28 13:32:34 2025
 Quant Method : Z:\pestpcbsrv\HPCHEM1\ECD_P\methods\PP012825.M
 Quant Title : GC EXTRACTABLES
 QLast Update : Tue Jan 28 13:32:21 2025
 Response via : Initial Calibration
 Integrator: ChemStation

Volume Inj. : 2 µl
 Signal #1 Phase : ZB-MR1 Signal #2 Phase: ZB-MR2
 Signal #1 Info : 30Mx0.32mmx 0.50µ Signal #2 Info : 30M x 0.32mm x 0.25µm

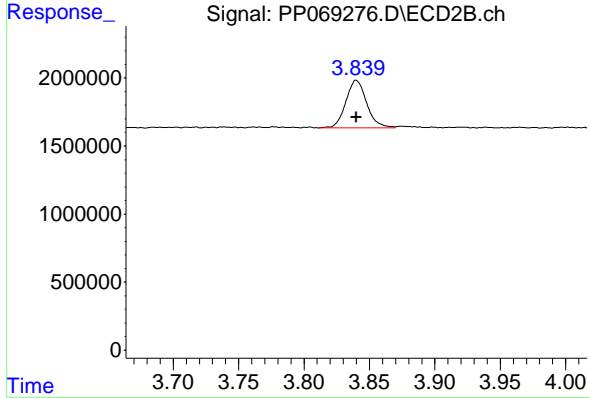




#1 Tetrachloro-m-xylene

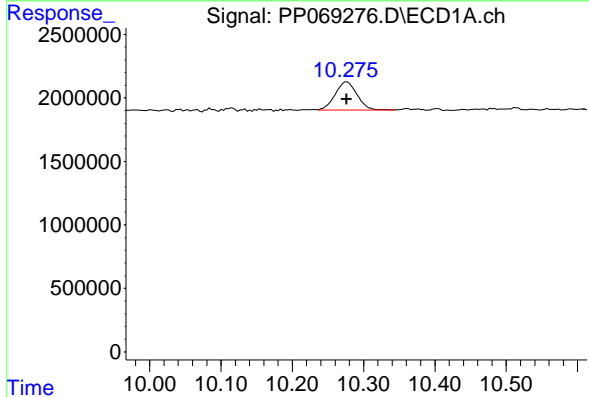
R.T.: 4.535 min
 Delta R.T.: 0.000 min
 Response: 5712040
 Conc: 4.01 ng/ml

Instrument : ECD_P
 ClientSampleId : AR1242ICC050



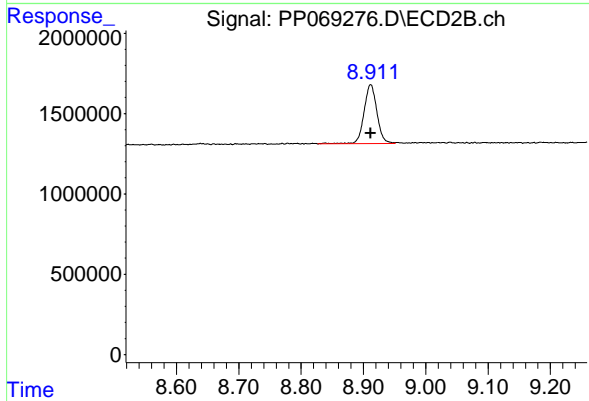
#1 Tetrachloro-m-xylene

R.T.: 3.840 min
 Delta R.T.: 0.000 min
 Response: 3880861
 Conc: 4.19 ng/ml



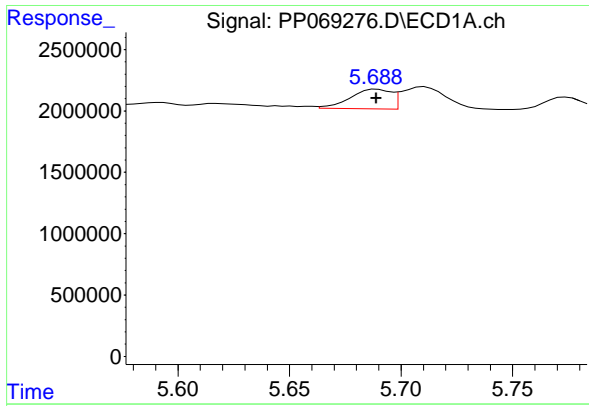
#2 Decachlorobiphenyl

R.T.: 10.276 min
 Delta R.T.: 0.000 min
 Response: 4701402
 Conc: 4.37 ng/ml



#2 Decachlorobiphenyl

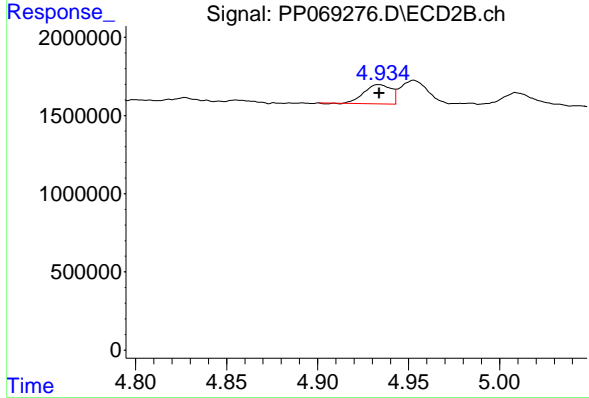
R.T.: 8.912 min
 Delta R.T.: 0.000 min
 Response: 5291649
 Conc: 4.75 ng/ml



#16 AR-1242-1

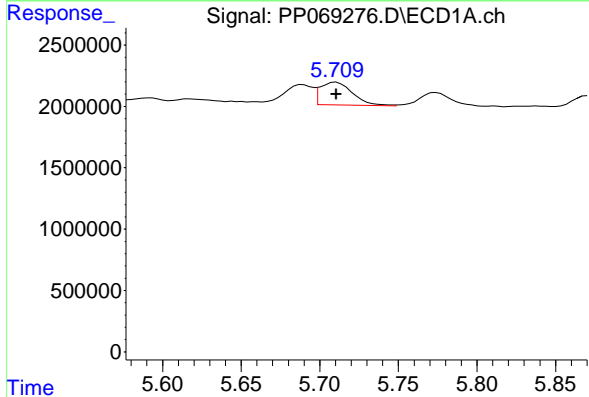
R.T.: 5.689 min
 Delta R.T.: 0.000 min
 Response: 2048207
 Conc: 49.11 ng/ml

Instrument : ECD_P
 ClientSampleId : AR1242IC050



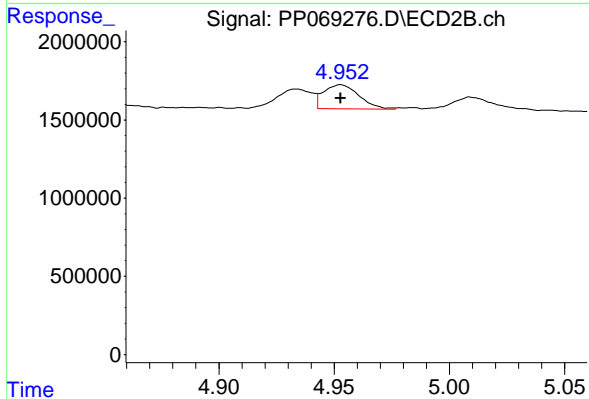
#16 AR-1242-1

R.T.: 4.934 min
 Delta R.T.: 0.000 min
 Response: 1270163
 Conc: 44.05 ng/ml



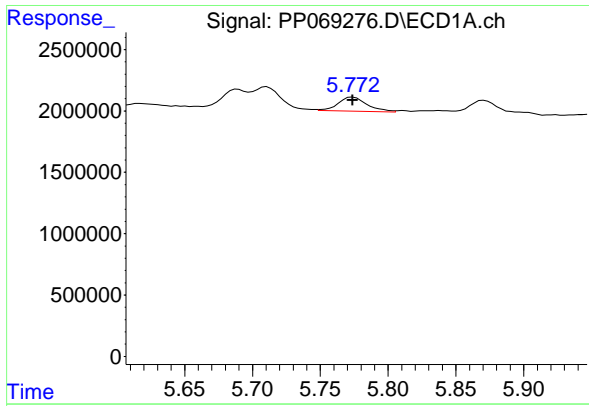
#17 AR-1242-2

R.T.: 5.711 min
 Delta R.T.: 0.000 min
 Response: 2705826
 Conc: 45.87 ng/ml



#17 AR-1242-2

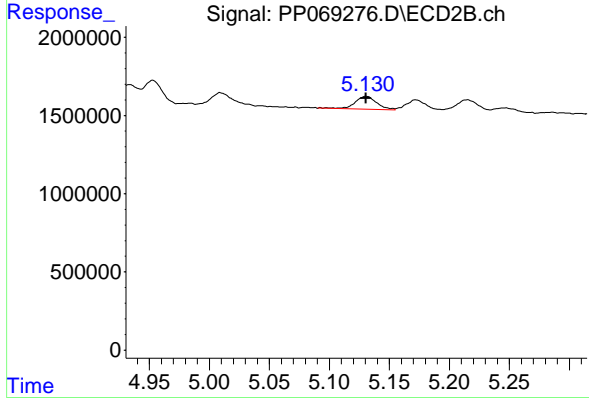
R.T.: 4.953 min
 Delta R.T.: 0.000 min
 Response: 1653863
 Conc: 41.98 ng/ml



#18 AR-1242-3

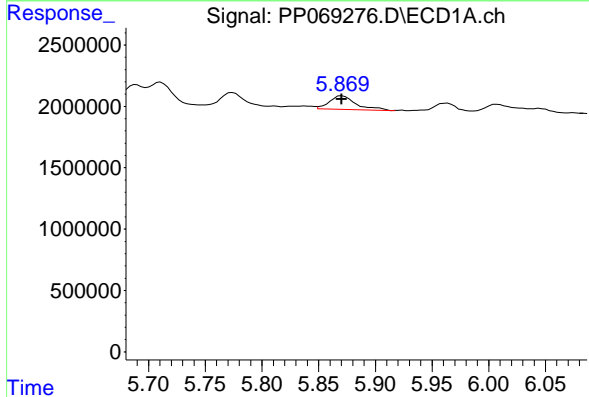
R.T.: 5.774 min
 Delta R.T.: 0.000 min
 Response: 1740514
 Conc: 46.92 ng/ml

Instrument : ECD_P
 ClientSampleId : AR1242ICC050



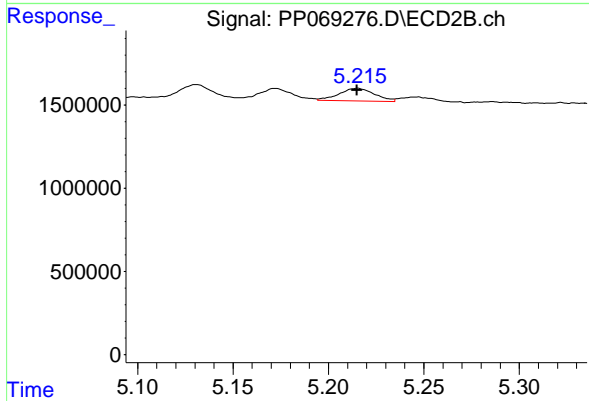
#18 AR-1242-3

R.T.: 5.131 min
 Delta R.T.: 0.000 min
 Response: 1035839
 Conc: 46.03 ng/ml



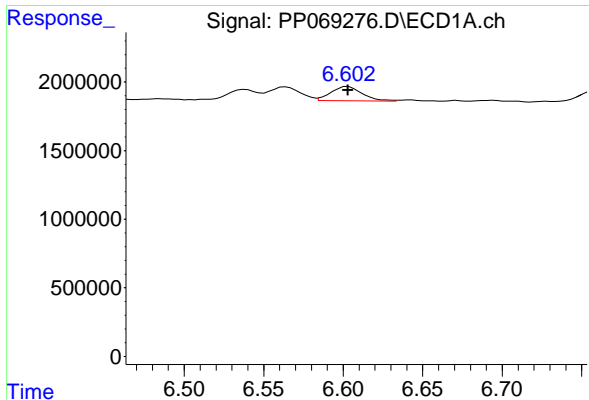
#19 AR-1242-4

R.T.: 5.870 min
 Delta R.T.: 0.000 min
 Response: 1808303
 Conc: 55.14 ng/ml



#19 AR-1242-4

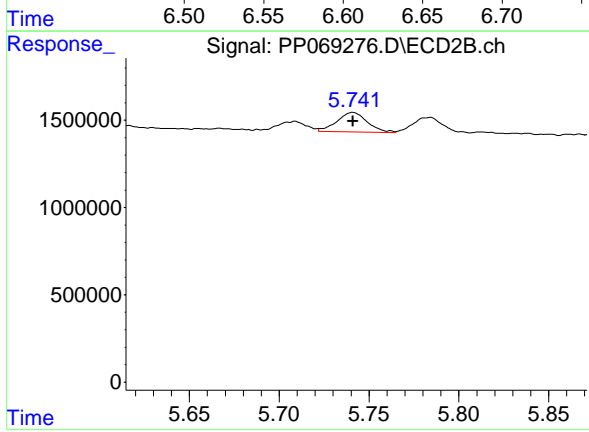
R.T.: 5.215 min
 Delta R.T.: 0.000 min
 Response: 993205
 Conc: 46.02 ng/ml



#20 AR-1242-5

R.T.: 6.603 min
 Delta R.T.: 0.000 min
 Response: 1440165
 Conc: 44.20 ng/ml

Instrument :
 ECD_P
 ClientSampleId :
 AR1242ICC050



#20 AR-1242-5

R.T.: 5.741 min
 Delta R.T.: 0.000 min
 Response: 1338070
 Conc: 46.51 ng/ml