

Data Path : Z:\pestpcbsrv\HPCHEM1\ECD_P\Data\PP012825\
 Data File : PP069277.D
 Signal(s) : Signal #1: ECD1A.ch Signal #2: ECD2B.ch
 Acq On : 28 Jan 2025 13:26
 Operator : YP\AJ
 Sample : AR1248ICC1000
 Misc :
 ALS Vial : 15 Sample Multiplier: 1

Instrument :
 ECD_P
ClientSampleId :
 AR1248ICC1000

Integration File signal 1: autoint1.e
 Integration File signal 2: autoint2.e
 Quant Time: Jan 28 14:15:23 2025
 Quant Method : Z:\pestpcbsrv\HPCHEM1\ECD_P\methods\PP012825.M
 Quant Title : GC EXTRACTABLES
 QLast Update : Tue Jan 28 14:11:04 2025
 Response via : Initial Calibration
 Integrator: ChemStation

Volume Inj. : 2 µl
 Signal #1 Phase : ZB-MR1 Signal #2 Phase: ZB-MR2
 Signal #1 Info : 30Mx0.32mmx 0.50µ Signal #2 Info : 30M x 0.32mm x 0.25µm

Compound	RT#1	RT#2	Resp#1	Resp#2	ng/ml	ng/ml

System Monitoring Compounds						
1) SA Tetrachlo...	4.536	3.841	139.8E6	93340429	96.035	98.382
2) SA Decachlor...	10.278	8.912	103.8E6	98040406	95.812	93.069
Target Compounds						
21) L5 AR-1248-1	5.690	4.934	29720774	21330255	955.393	958.327
22) L5 AR-1248-2	5.963	5.172	40031392	28324001	958.740	965.847
23) L5 AR-1248-3	6.166	5.215	44249426	29601440	956.494	967.648
24) L5 AR-1248-4	6.565	5.388	52361428	35306028	948.489	964.835
25) L5 AR-1248-5	6.604	5.784	50435355	36064443	950.417	976.042

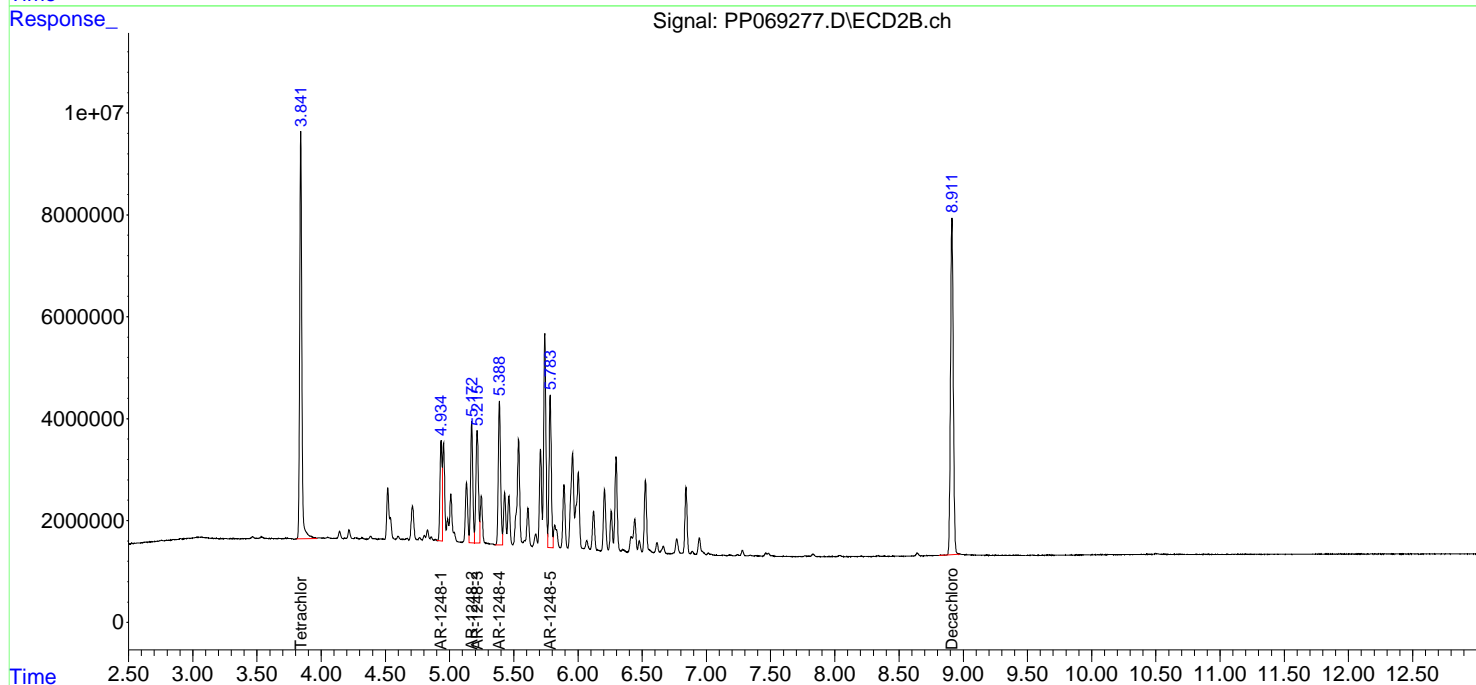
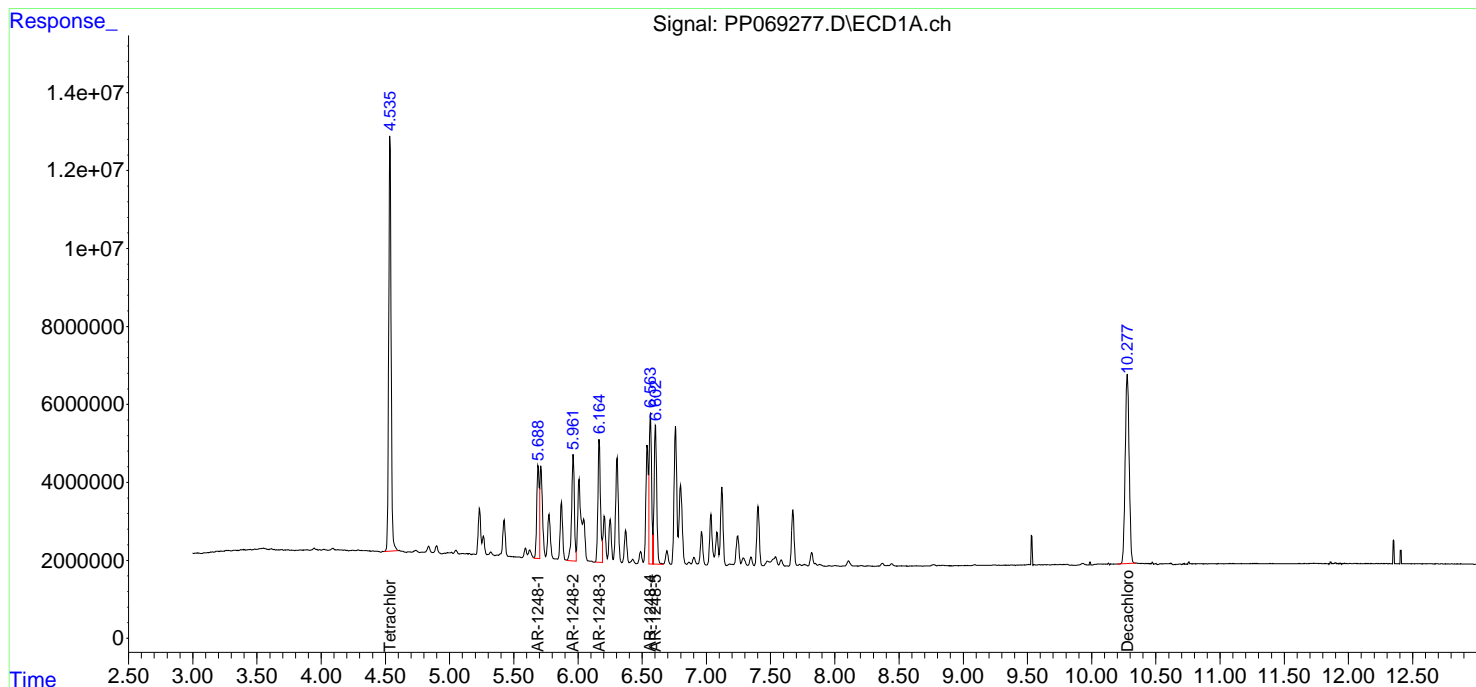
(f)=RT Delta > 1/2 Window (#)=Amounts differ by > 25% (m)=manual int.

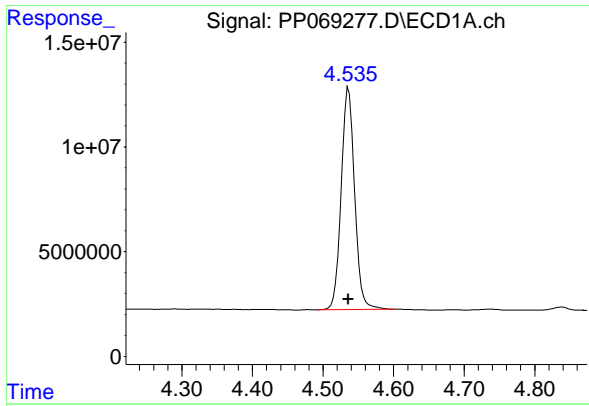
Data Path : Z:\pestpcbsrv\HPCHEM1\ECD_P\Data\PP012825\
Data File : PP069277.D
Signal(s) : Signal #1: ECD1A.ch Signal #2: ECD2B.ch
Acq On : 28 Jan 2025 13:26
Operator : YP\AJ
Sample : AR1248ICC1000
Misc :
ALS Vial : 15 Sample Multiplier: 1

Instrument :
ECD_P
ClientSampleId :
AR1248ICC1000

Integration File signal 1: autoint1.e
Integration File signal 2: autoint2.e
Quant Time: Jan 28 14:15:23 2025
Quant Method : Z:\pestpcbsrv\HPCHEM1\ECD_P\methods\PP012825.M
Quant Title : GC EXTRACTABLES
QLast Update : Tue Jan 28 14:11:04 2025
Response via : Initial Calibration
Integrator: ChemStation

Volume Inj. : 2 µl
Signal #1 Phase : ZB-MR1 Signal #2 Phase: ZB-MR2
Signal #1 Info : 30Mx0.32mmx 0.50µm Signal #2 Info : 30M x 0.32mm x 0.25µm

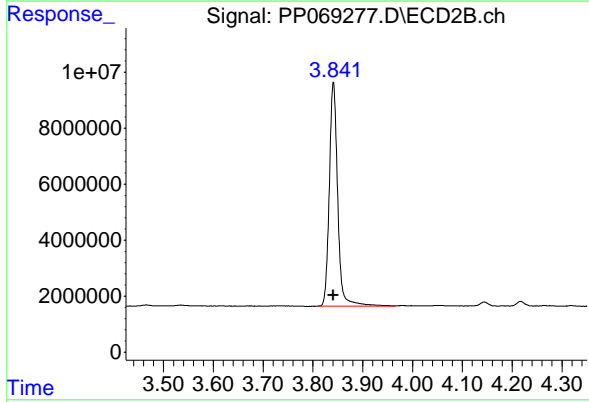




#1 Tetrachloro-m-xylene

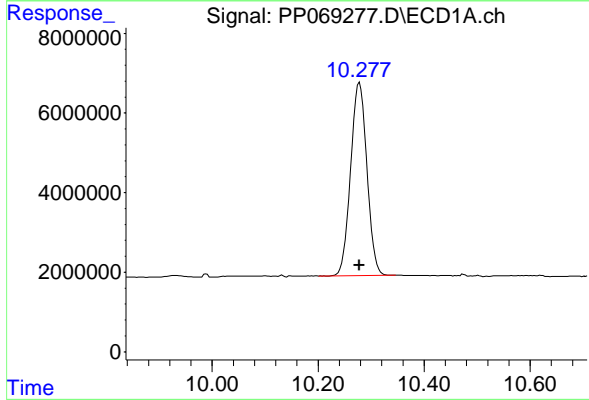
R.T.: 4.536 min
 Delta R.T.: 0.000 min
 Response: 139785076
 Conc: 96.04 ng/ml

Instrument :
 ECD_P
 ClientSampleId :
 AR1248ICC1000



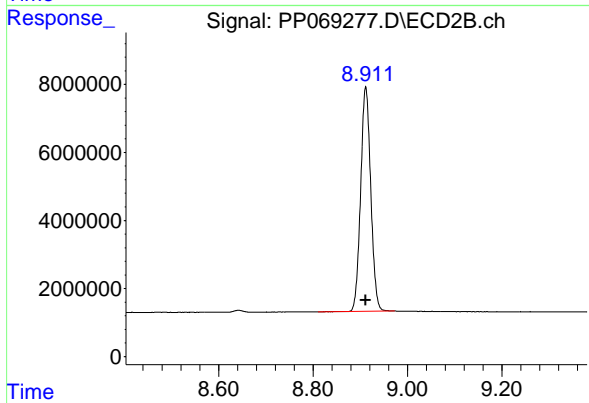
#1 Tetrachloro-m-xylene

R.T.: 3.841 min
 Delta R.T.: 0.000 min
 Response: 93340429
 Conc: 98.38 ng/ml



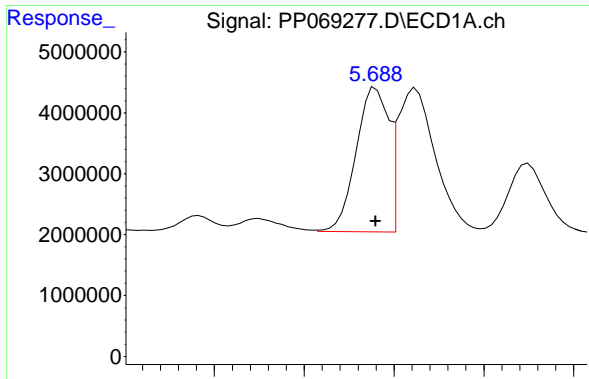
#2 Decachlorobiphenyl

R.T.: 10.278 min
 Delta R.T.: 0.000 min
 Response: 103763918
 Conc: 95.81 ng/ml



#2 Decachlorobiphenyl

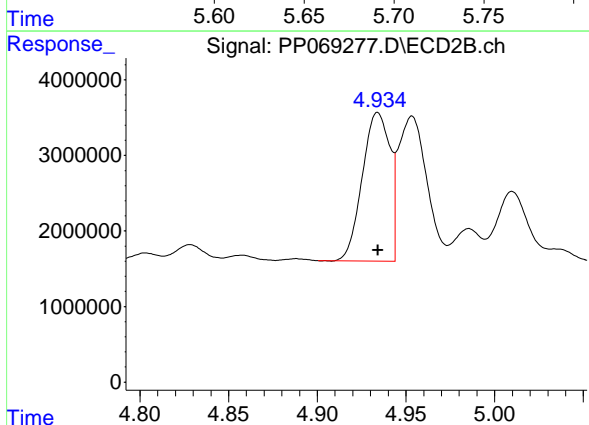
R.T.: 8.912 min
 Delta R.T.: 0.000 min
 Response: 98040406
 Conc: 93.07 ng/ml



#21 AR-1248-1

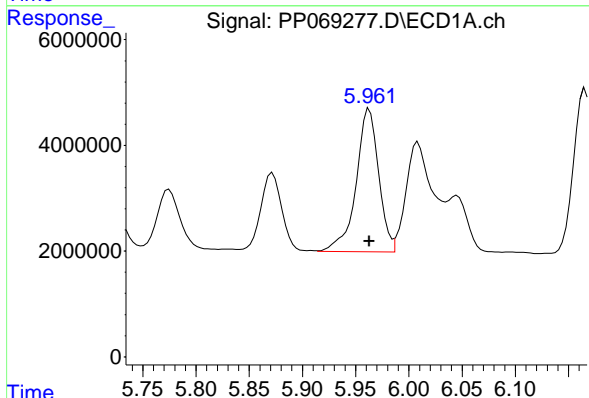
R.T.: 5.690 min
Delta R.T.: 0.000 min
Response: 29720774
Conc: 955.39 ng/ml

Instrument :
ECD_P
ClientSampleId :
AR1248ICC1000



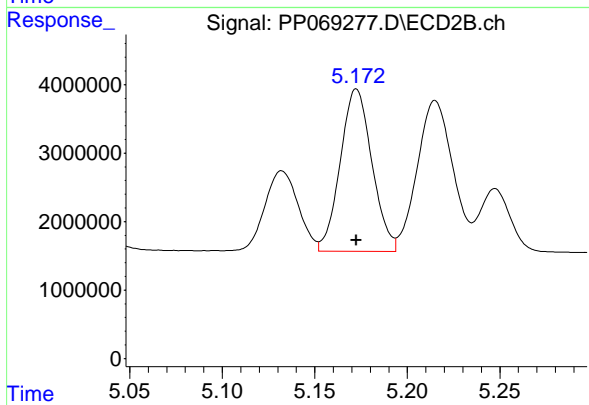
#21 AR-1248-1

R.T.: 4.934 min
Delta R.T.: 0.000 min
Response: 21330255
Conc: 958.33 ng/ml



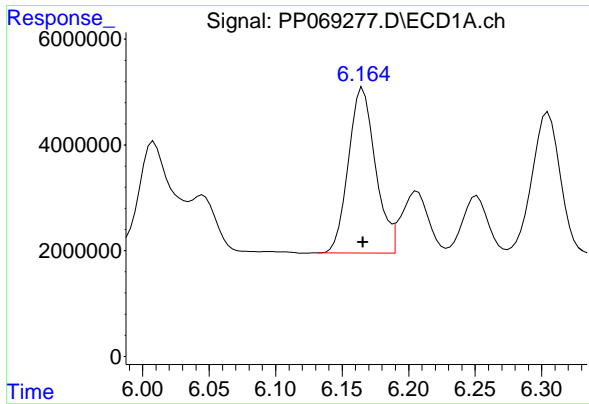
#22 AR-1248-2

R.T.: 5.963 min
Delta R.T.: 0.000 min
Response: 40031392
Conc: 958.74 ng/ml



#22 AR-1248-2

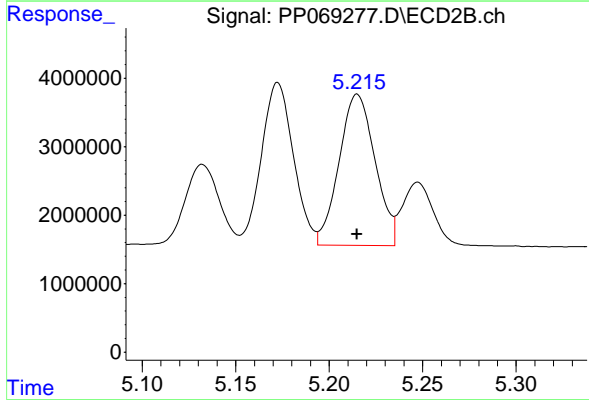
R.T.: 5.172 min
Delta R.T.: 0.000 min
Response: 28324001
Conc: 965.85 ng/ml



#23 AR-1248-3

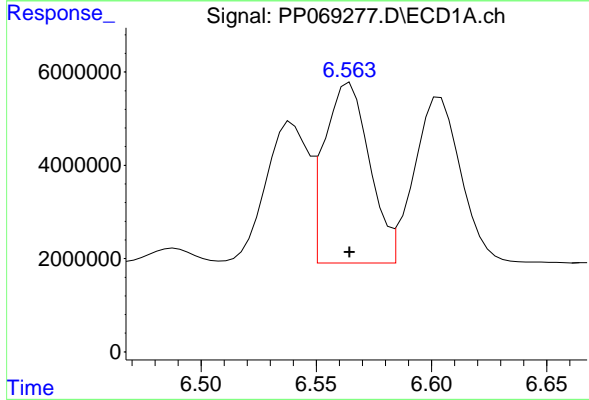
R.T.: 6.166 min
 Delta R.T.: 0.000 min
 Response: 44249426
 Conc: 956.49 ng/ml

Instrument :
 ECD_P
 ClientSampleId :
 AR1248ICC1000



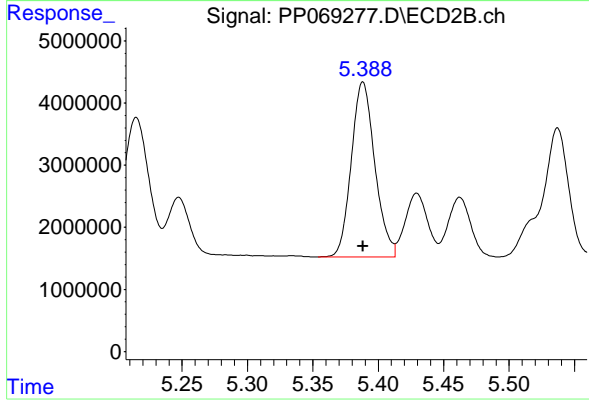
#23 AR-1248-3

R.T.: 5.215 min
 Delta R.T.: 0.000 min
 Response: 29601440
 Conc: 967.65 ng/ml



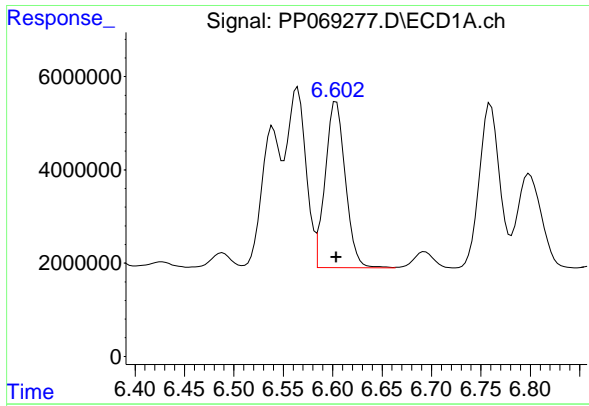
#24 AR-1248-4

R.T.: 6.565 min
 Delta R.T.: 0.000 min
 Response: 52361428
 Conc: 948.49 ng/ml



#24 AR-1248-4

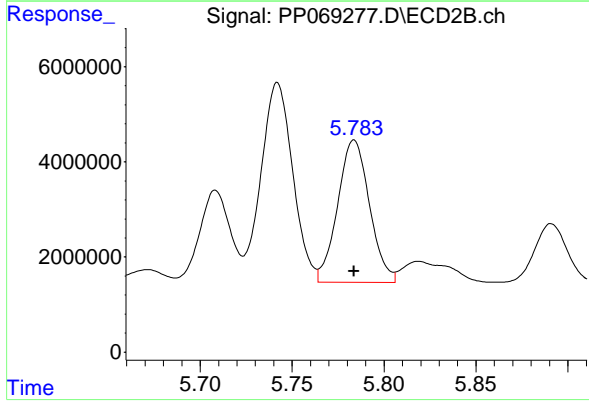
R.T.: 5.388 min
 Delta R.T.: 0.000 min
 Response: 35306028
 Conc: 964.84 ng/ml



#25 AR-1248-5

R.T.: 6.604 min
Delta R.T.: 0.000 min
Response: 50435355
Conc: 950.42 ng/ml

Instrument :
ECD_P
ClientSampleId :
AR1248ICC1000



#25 AR-1248-5

R.T.: 5.784 min
Delta R.T.: 0.000 min
Response: 36064443
Conc: 976.04 ng/ml