

Data Path : Z:\pestpcbsrv\HPCHEM1\ECD\_P\Data\PP012825\  
 Data File : PP069290.D  
 Signal(s) : Signal #1: ECD1A.ch Signal #2: ECD2B.ch  
 Acq On : 28 Jan 2025 16:58  
 Operator : YP\AJ  
 Sample : AR1268ICC500  
 Misc :  
 ALS Vial : 28 Sample Multiplier: 1

Instrument :  
 ECD\_P  
 ClientSampleId :  
 AR1268ICC500

Integration File signal 1: autoint1.e  
 Integration File signal 2: autoint2.e  
 Quant Time: Jan 28 17:11:41 2025  
 Quant Method : Z:\pestpcbsrv\HPCHEM1\ECD\_P\methods\PP012825.M  
 Quant Title : GC EXTRACTABLES  
 QLast Update : Tue Jan 28 17:10:22 2025  
 Response via : Initial Calibration  
 Integrator: ChemStation

Volume Inj. : 2 µl  
 Signal #1 Phase : ZB-MR1 Signal #2 Phase: ZB-MR2  
 Signal #1 Info : 30Mx0.32mmx 0.50µ Signal #2 Info : 30M x 0.32mm x 0.25µm

Compound	RT#1	RT#2	Resp#1	Resp#2	ng/ml	ng/ml
-----						
System Monitoring Compounds						
1) SA Tetrachlo...	4.536	3.841	76862426	49181825	50.000	50.000
2) SA Decachlor...	10.279	8.911	96042801	96162855	50.000	50.000
Target Compounds						
41) L9 AR-1268-1	8.761	7.768	96392837	80759270	500.000	500.000
42) L9 AR-1268-2	8.855	7.833	85848712	74363836	500.000	500.000
43) L9 AR-1268-3	9.090	8.040	73389481	63508948	500.000	500.000
44) L9 AR-1268-4	9.510	8.335	32343556	29394578	500.000	500.000
45) L9 AR-1268-5	9.932	8.641	207.3E6	195.8E6	500.000	500.000
-----						

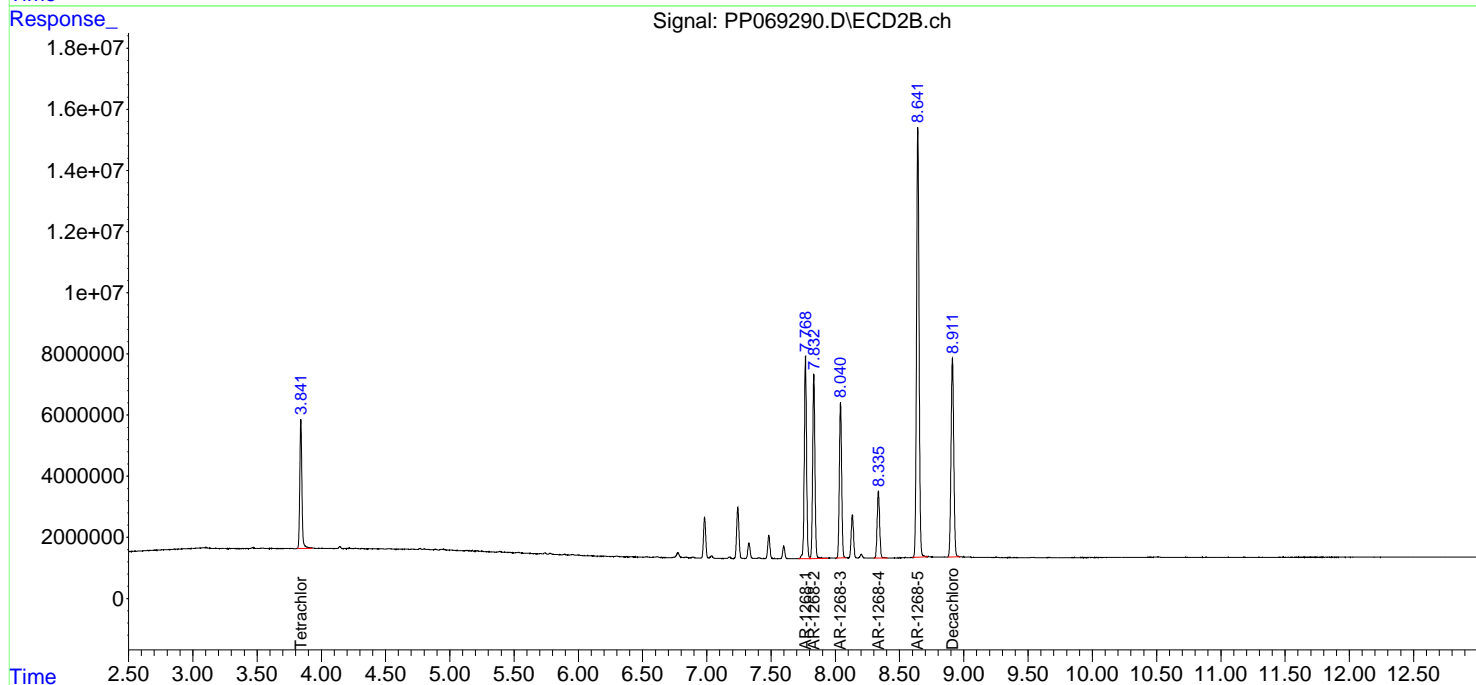
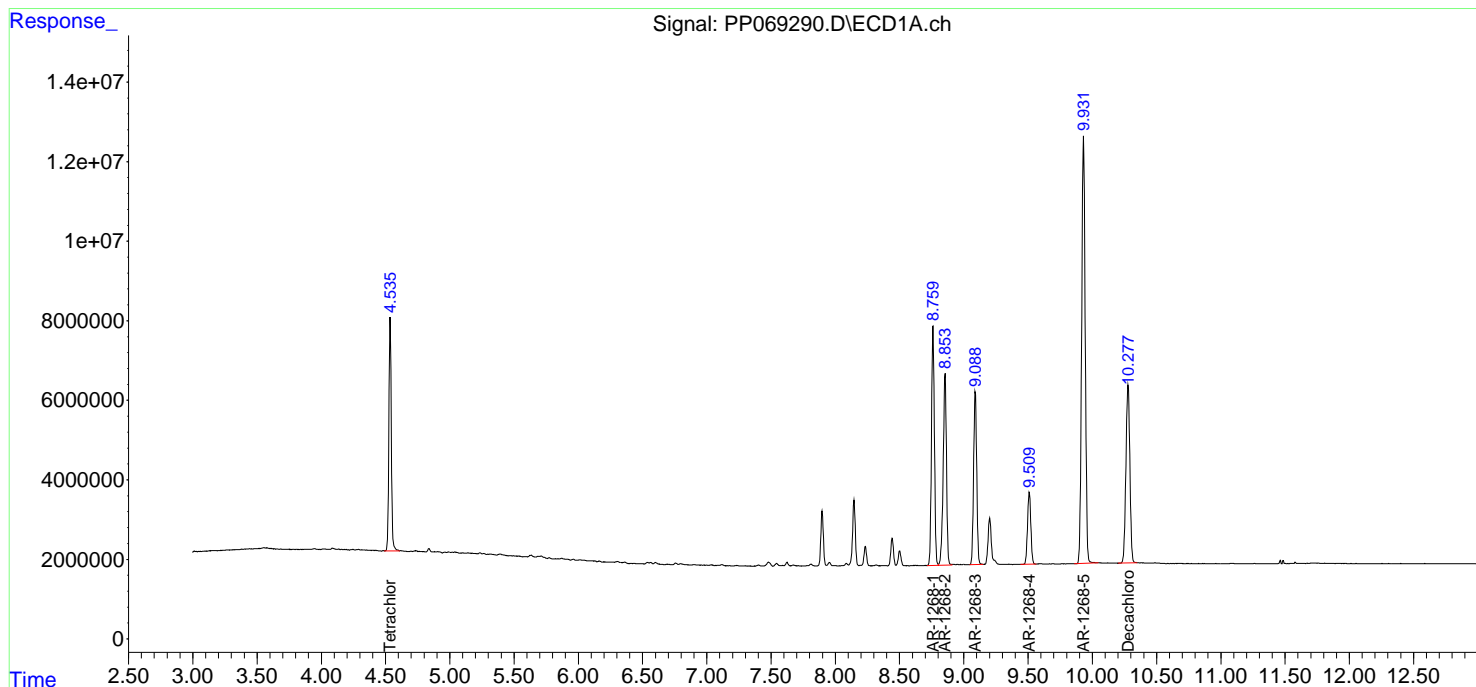
(f)=RT Delta > 1/2 Window (#)=Amounts differ by > 25% (m)=manual int.

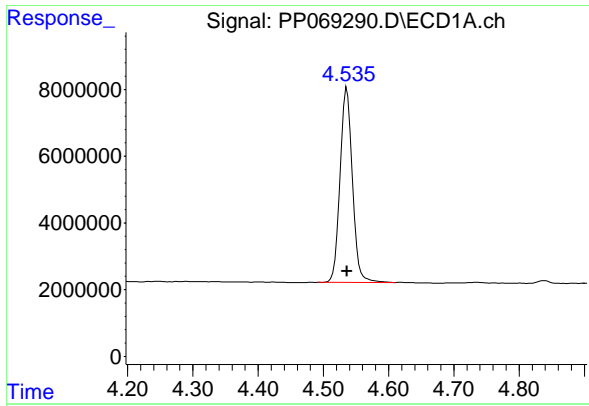
Data Path : Z:\pestpcbsrv\HPCHEM1\ECD\_P\Data\PP012825\  
 Data File : PP069290.D  
 Signal(s) : Signal #1: ECD1A.ch Signal #2: ECD2B.ch  
 Acq On : 28 Jan 2025 16:58  
 Operator : YP\AJ  
 Sample : AR1268ICC500  
 Misc :  
 ALS Vial : 28 Sample Multiplier: 1

Instrument :  
 ECD\_P  
 ClientSampleId :  
 AR1268ICC500

Integration File signal 1: autoint1.e  
 Integration File signal 2: autoint2.e  
 Quant Time: Jan 28 17:11:41 2025  
 Quant Method : Z:\pestpcbsrv\HPCHEM1\ECD\_P\methods\PP012825.M  
 Quant Title : GC EXTRACTABLES  
 QLast Update : Tue Jan 28 17:10:22 2025  
 Response via : Initial Calibration  
 Integrator: ChemStation

Volume Inj. : 2 µl  
 Signal #1 Phase : ZB-MR1 Signal #2 Phase: ZB-MR2  
 Signal #1 Info : 30Mx0.32mmx 0.50µm Signal #2 Info : 30M x 0.32mm x 0.25µm

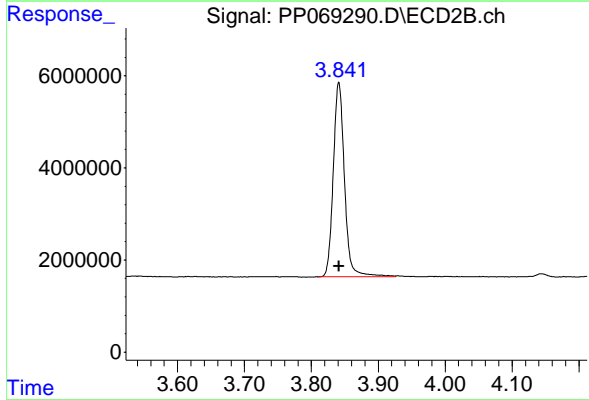




#1 Tetrachloro-m-xylene

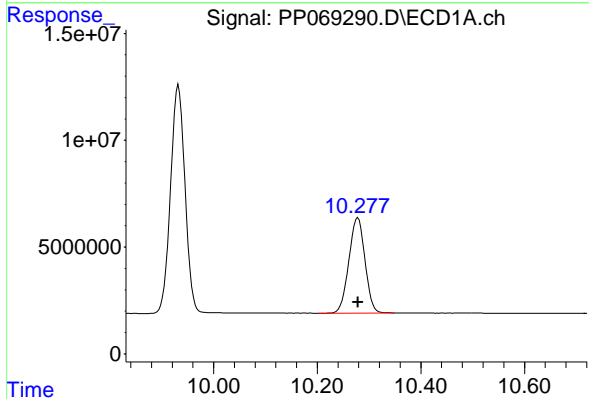
R.T.: 4.536 min  
 Delta R.T.: 0.000 min  
 Response: 76862426  
 Conc: 50.00 ng/ml

Instrument :  
 ECD\_P  
 ClientSampleId :  
 AR1268ICC500



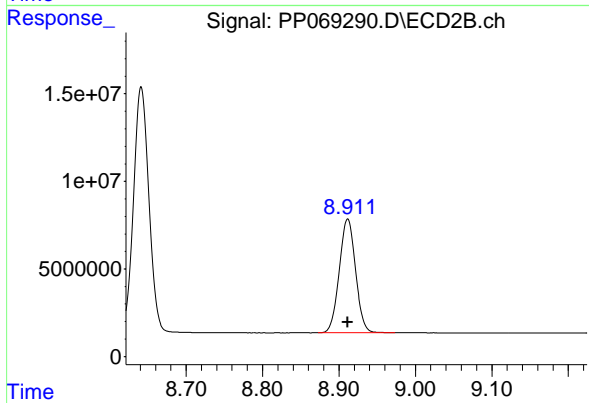
#1 Tetrachloro-m-xylene

R.T.: 3.841 min  
 Delta R.T.: 0.000 min  
 Response: 49181825  
 Conc: 50.00 ng/ml



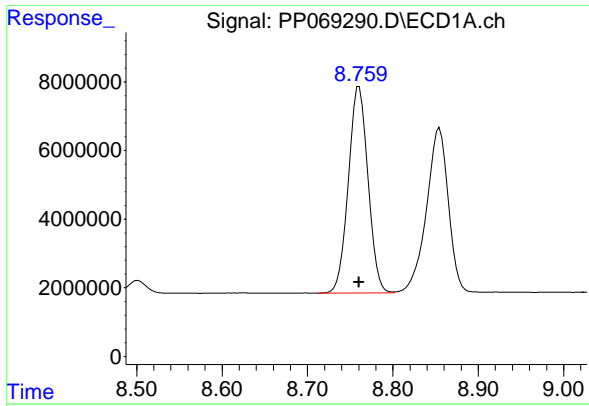
#2 Decachlorobiphenyl

R.T.: 10.279 min  
 Delta R.T.: 0.000 min  
 Response: 96042801  
 Conc: 50.00 ng/ml



#2 Decachlorobiphenyl

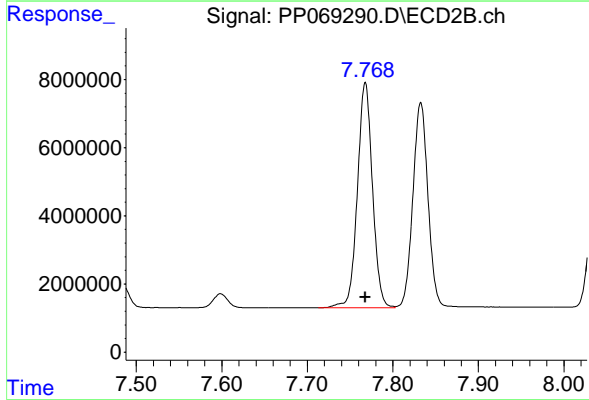
R.T.: 8.911 min  
 Delta R.T.: 0.000 min  
 Response: 96162855  
 Conc: 50.00 ng/ml



#41 AR-1268-1

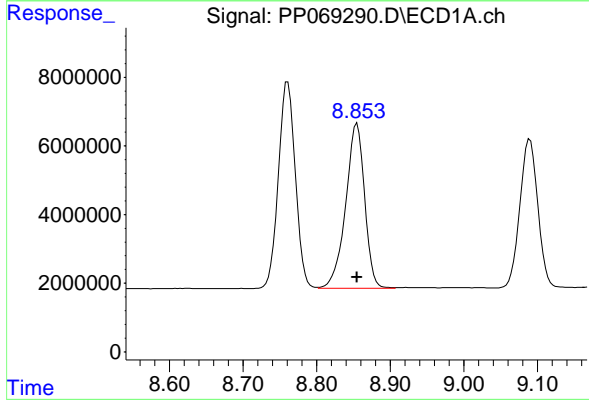
R.T.: 8.761 min  
 Delta R.T.: 0.000 min  
 Response: 96392837  
 Conc: 500.00 ng/ml

Instrument :  
 ECD\_P  
 ClientSampleId :  
 AR1268ICC500



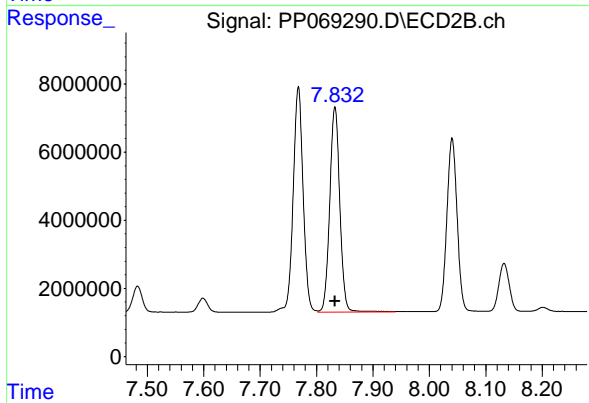
#41 AR-1268-1

R.T.: 7.768 min  
 Delta R.T.: 0.000 min  
 Response: 80759270  
 Conc: 500.00 ng/ml



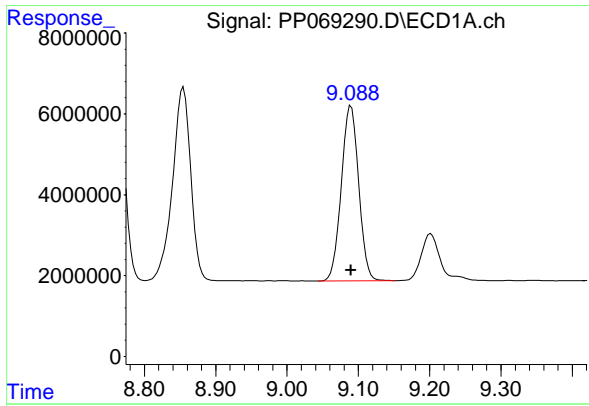
#42 AR-1268-2

R.T.: 8.855 min  
 Delta R.T.: 0.000 min  
 Response: 85848712  
 Conc: 500.00 ng/ml



#42 AR-1268-2

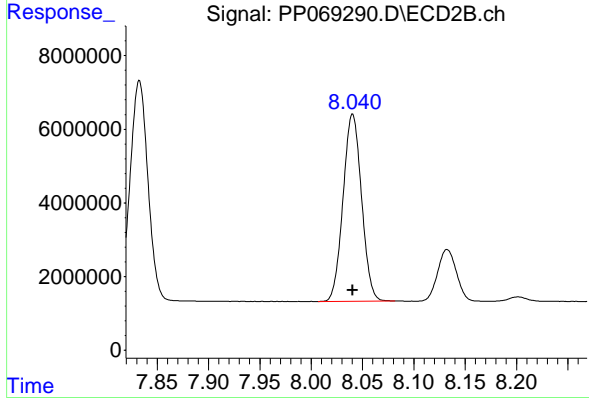
R.T.: 7.833 min  
 Delta R.T.: 0.000 min  
 Response: 74363836  
 Conc: 500.00 ng/ml



#43 AR-1268-3

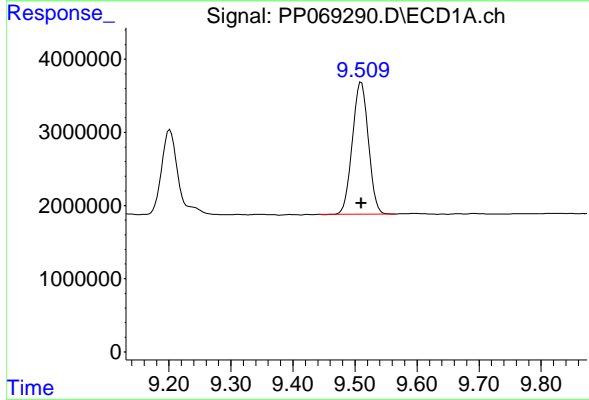
R.T.: 9.090 min  
 Delta R.T.: 0.000 min  
 Response: 73389481  
 Conc: 500.00 ng/ml

Instrument :  
 ECD\_P  
 ClientSampleId :  
 AR1268ICC500



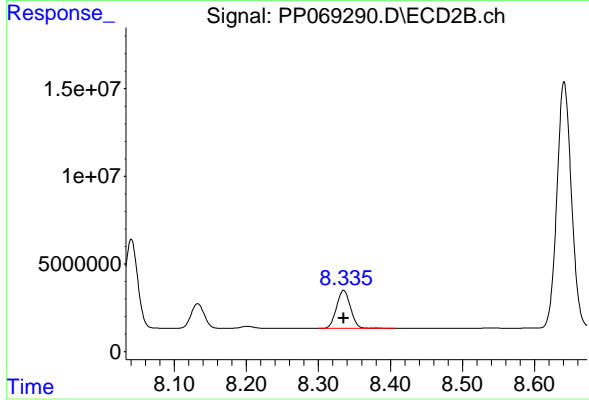
#43 AR-1268-3

R.T.: 8.040 min  
 Delta R.T.: 0.000 min  
 Response: 63508948  
 Conc: 500.00 ng/ml



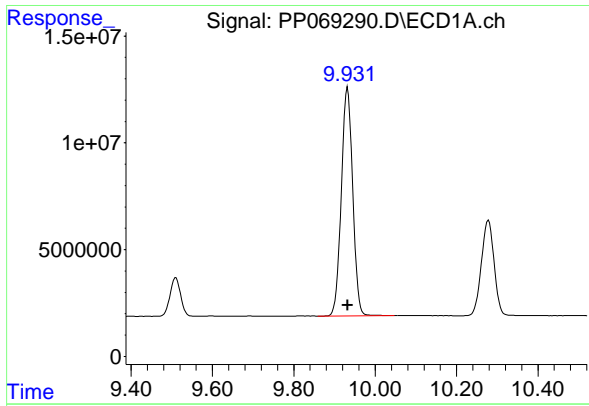
#44 AR-1268-4

R.T.: 9.510 min  
 Delta R.T.: 0.000 min  
 Response: 32343556  
 Conc: 500.00 ng/ml



#44 AR-1268-4

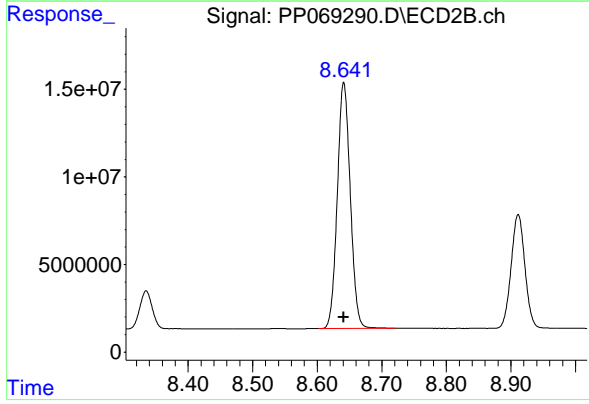
R.T.: 8.335 min  
 Delta R.T.: 0.000 min  
 Response: 29394578  
 Conc: 500.00 ng/ml



#45 AR-1268-5

R.T.: 9.932 min  
Delta R.T.: 0.000 min  
Response: 207250635  
Conc: 500.00 ng/ml

Instrument :  
ECD\_P  
ClientSampleId :  
AR1268ICC500



#45 AR-1268-5

R.T.: 8.641 min  
Delta R.T.: 0.000 min  
Response: 195833465  
Conc: 500.00 ng/ml