

Data Path : Z:\pestpcbsrv\HPCHEM1\ECD_P\Data\PP012825\
 Data File : PP069292.D
 Signal(s) : Signal #1: ECD1A.ch Signal #2: ECD2B.ch
 Acq On : 28 Jan 2025 17:30
 Operator : YP\AJ
 Sample : AR1268ICC050
 Misc :
 ALS Vial : 30 Sample Multiplier: 1

Instrument :
 ECD_P
ClientSampleId :
 AR1268ICC050

Manual Integrations
APPROVED
 Reviewed By :Yogesh Patel 01/29/2025
 Supervised By :Ankita Jodhani 01/29/2025

Integration File signal 1: autoint1.e
 Integration File signal 2: autoint2.e
 Quant Time: Jan 28 17:46:23 2025
 Quant Method : Z:\pestpcbsrv\HPCHEM1\ECD_P\methods\PP012825.M
 Quant Title : GC EXTRACTABLES
 QLast Update : Tue Jan 28 17:46:12 2025
 Response via : Initial Calibration
 Integrator: ChemStation

Volume Inj. : 2 µl
 Signal #1 Phase : ZB-MR1 Signal #2 Phase: ZB-MR2
 Signal #1 Info : 30Mx0.32mmx 0.50µ Signal #2 Info : 30M x 0.32mm x 0.25µm

Compound	RT#1	RT#2	Resp#1	Resp#2	ng/ml	ng/ml

System Monitoring Compounds						
1) SA Tetrachlo...	4.537	3.840	4537630	2929843	3.283m	3.277m
2) SA Decachlor...	10.278	8.910	5979560	6573940	3.419	3.771
Target Compounds						
41) L9 AR-1268-1	8.763	7.767	6295775	5422252	35.654	37.363
42) L9 AR-1268-2	8.857	7.832	5727609	4780082	36.395	35.990
43) L9 AR-1268-3	9.093	8.039	4626946	4204668	34.600	36.968
44) L9 AR-1268-4	9.511	8.335	1957538	1726940	33.336	33.161
45) L9 AR-1268-5	9.933	8.641	13066763	12717604	34.305	35.705

(f)=RT Delta > 1/2 Window (#)=Amounts differ by > 25% (m)=manual int.

Data Path : Z:\pestpcbsrv\HPCHEM1\ECD_P\Data\PP012825\
 Data File : PP069292.D
 Signal(s) : Signal #1: ECD1A.ch Signal #2: ECD2B.ch
 Acq On : 28 Jan 2025 17:30
 Operator : YP\AJ
 Sample : AR1268ICC050
 Misc :
 ALS Vial : 30 Sample Multiplier: 1

Instrument :

ECD_P

ClientSampleId :

AR1268ICC050

Manual Integrations

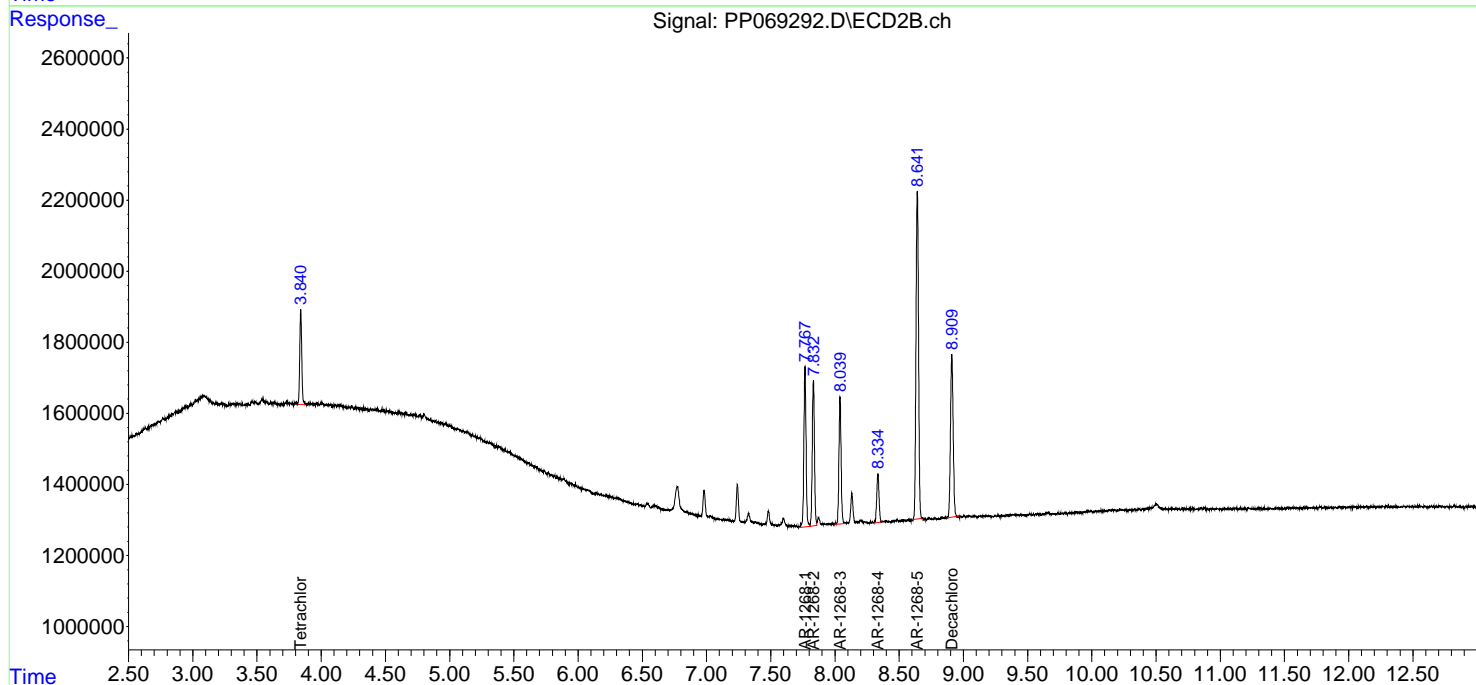
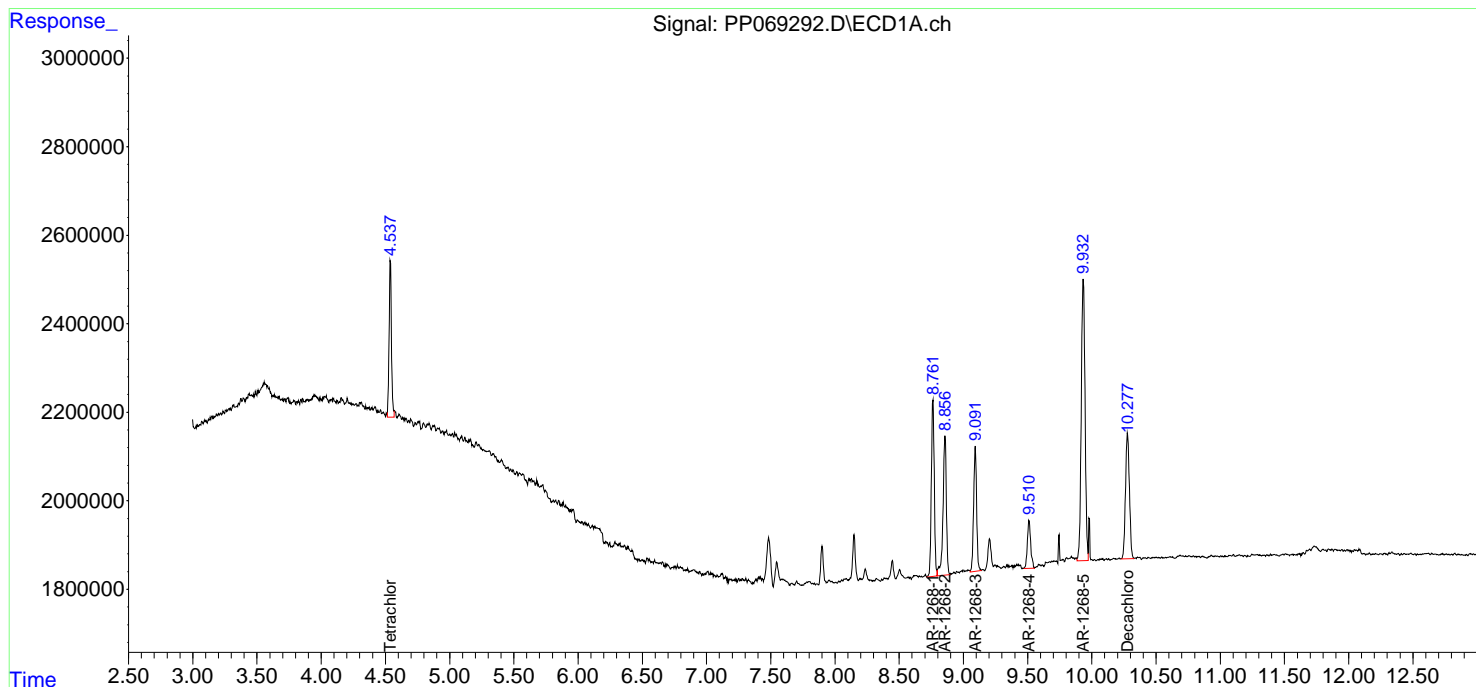
APPROVED

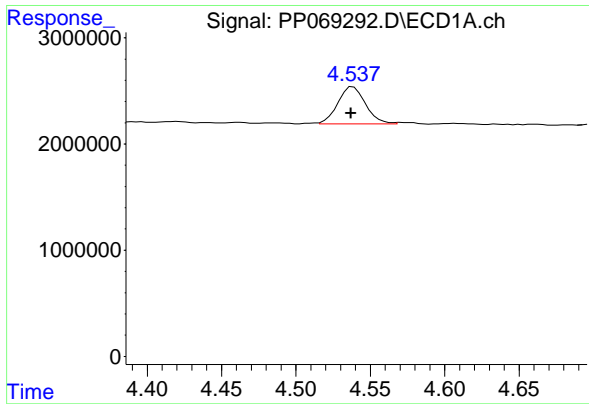
Reviewed By :Yogesh Patel 01/29/2025

Supervised By :Ankita Jodhani 01/29/2025

Integration File signal 1: autoint1.e
 Integration File signal 2: autoint2.e
 Quant Time: Jan 28 17:46:23 2025
 Quant Method : Z:\pestpcbsrv\HPCHEM1\ECD_P\methods\PP012825.M
 Quant Title : GC EXTRACTABLES
 QLast Update : Tue Jan 28 17:46:12 2025
 Response via : Initial Calibration
 Integrator: ChemStation

Volume Inj. : 2 µl
 Signal #1 Phase : ZB-MR1 Signal #2 Phase: ZB-MR2
 Signal #1 Info : 30Mx0.32mmx 0.50µm Signal #2 Info : 30M x 0.32mm x 0.25µm





#1 Tetrachloro-m-xylene

R.T.: 4.537 min
 Delta R.T.: 0.000 min
 Response: 4537630
 Conc: 3.28 ng/ml

Instrument :

ECD_P

Client Sample Id :

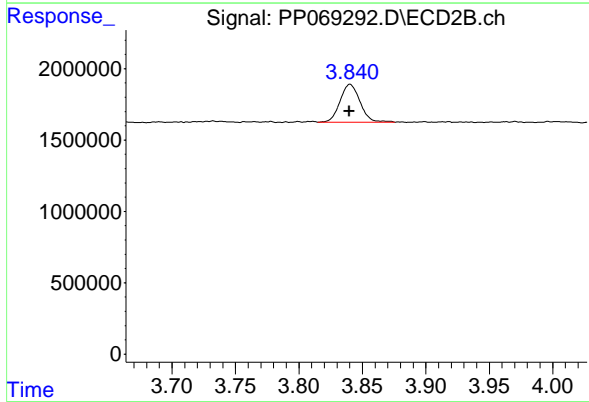
AR1268ICC050

Manual Integrations

APPROVED

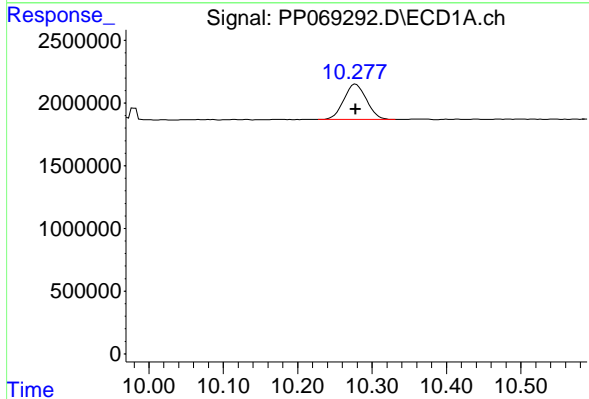
Reviewed By :Yogesh Patel 01/29/2025

Supervised By :Ankita Jodhani 01/29/2025



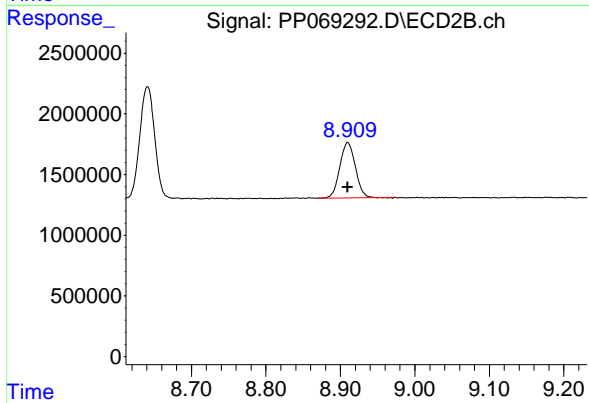
#1 Tetrachloro-m-xylene

R.T.: 3.840 min
 Delta R.T.: 0.000 min
 Response: 2929843
 Conc: 3.28 ng/ml m



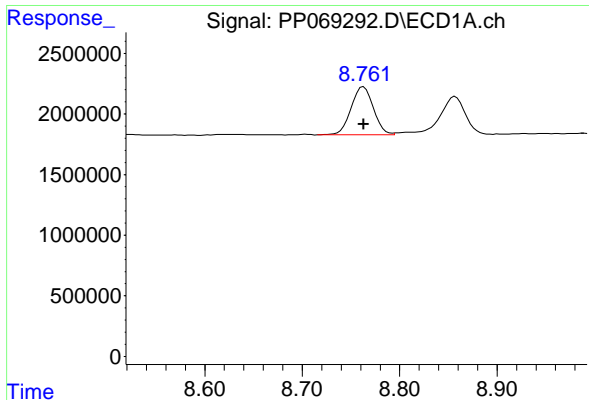
#2 Decachlorobiphenyl

R.T.: 10.278 min
 Delta R.T.: 0.000 min
 Response: 5979560
 Conc: 3.42 ng/ml



#2 Decachlorobiphenyl

R.T.: 8.910 min
 Delta R.T.: 0.000 min
 Response: 6573940
 Conc: 3.77 ng/ml



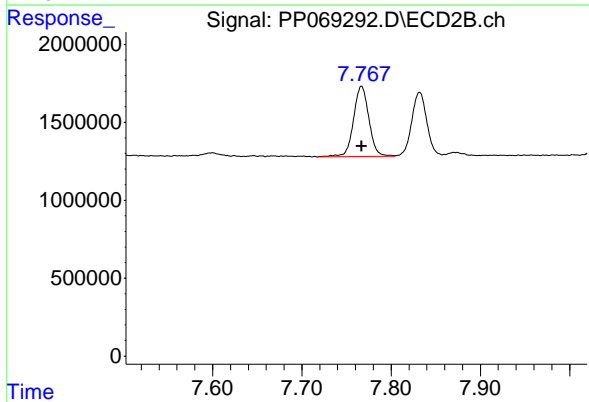
#41 AR-1268-1

R.T.: 8.763 min
 Delta R.T.: 0.000 min
 Response: 6295775
 Conc: 35.65 ng/ml

Instrument : ECD_P
 Client Sample Id : AR1268ICC050

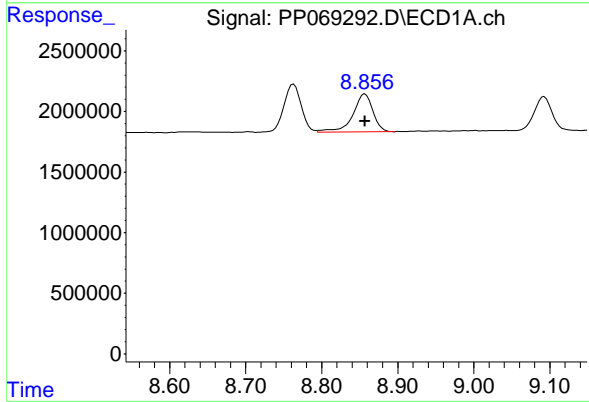
Manual Integrations
 APPROVED

Reviewed By :Yogesh Patel 01/29/2025
 Supervised By :Ankita Jodhani 01/29/2025



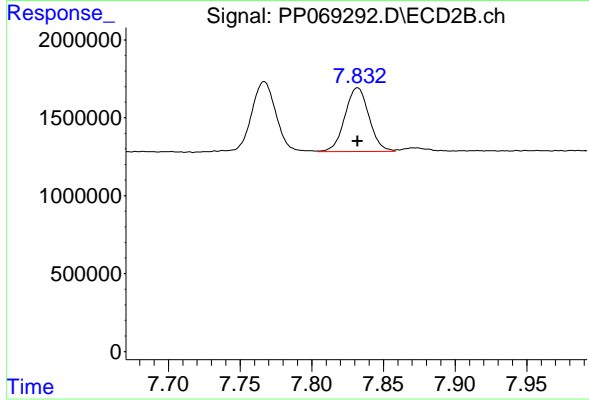
#41 AR-1268-1

R.T.: 7.767 min
 Delta R.T.: 0.000 min
 Response: 5422252
 Conc: 37.36 ng/ml



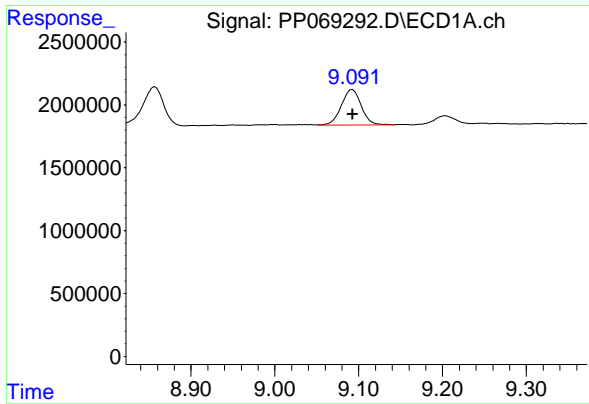
#42 AR-1268-2

R.T.: 8.857 min
 Delta R.T.: 0.000 min
 Response: 5727609
 Conc: 36.40 ng/ml



#42 AR-1268-2

R.T.: 7.832 min
 Delta R.T.: 0.000 min
 Response: 4780082
 Conc: 35.99 ng/ml



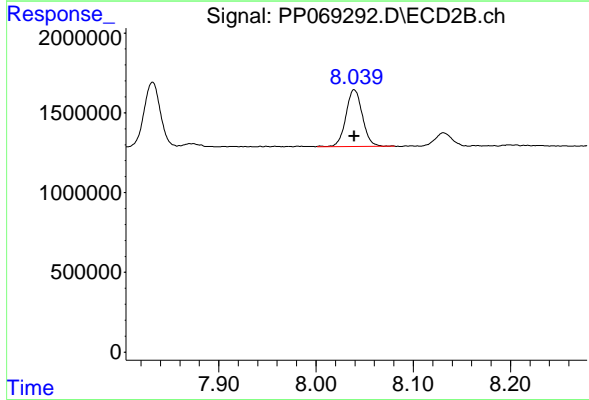
#43 AR-1268-3

R.T.: 9.093 min
 Delta R.T.: 0.000 min
 Response: 4626946
 Conc: 34.60 ng/ml

Instrument : ECD_P
 Client Sample Id : AR1268ICC050

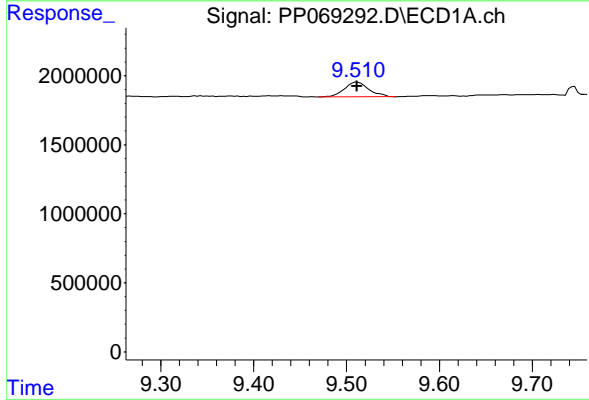
Manual Integrations
 APPROVED

Reviewed By :Yogesh Patel 01/29/2025
 Supervised By :Ankita Jodhani 01/29/2025



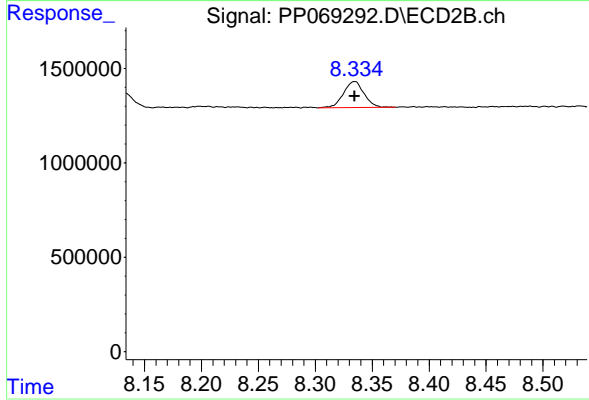
#43 AR-1268-3

R.T.: 8.039 min
 Delta R.T.: 0.000 min
 Response: 4204668
 Conc: 36.97 ng/ml



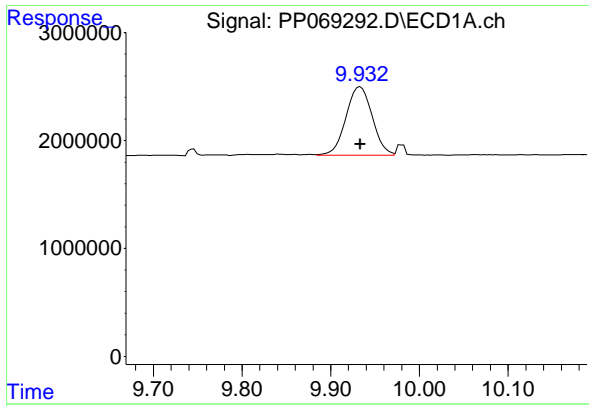
#44 AR-1268-4

R.T.: 9.511 min
 Delta R.T.: 0.000 min
 Response: 1957538
 Conc: 33.34 ng/ml



#44 AR-1268-4

R.T.: 8.335 min
 Delta R.T.: 0.000 min
 Response: 1726940
 Conc: 33.16 ng/ml



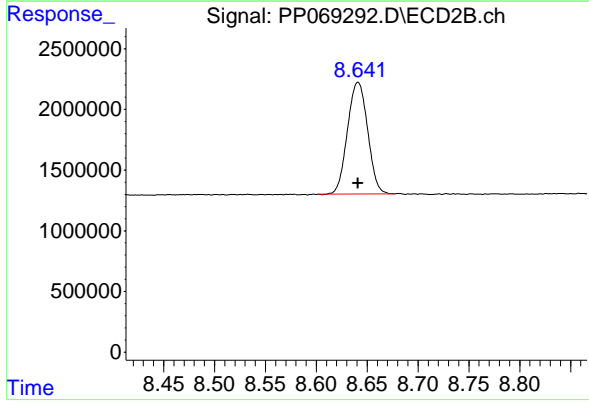
#45 AR-1268-5

R.T.: 9.933 min
 Delta R.T.: 0.000 min
 Response: 13066763
 Conc: 34.31 ng/ml

Instrument : ECD_P
 ClientSampleId : AR1268ICC050

Manual Integrations
 APPROVED

Reviewed By :Yogesh Patel 01/29/2025
 Supervised By :Ankita Jodhani 01/29/2025



#45 AR-1268-5

R.T.: 8.641 min
 Delta R.T.: 0.000 min
 Response: 12717604
 Conc: 35.71 ng/ml