

Data Path : Z:\pestpcbsrv\HPCHEM1\ECD_L\Data\PL021425\
 Data File : PL094197.D
 Signal(s) : Signal #1: ECD1A.ch Signal #2: ECD2B.ch
 Acq On : 14 Feb 2025 14:53
 Operator : AR\AJ
 Sample : Q1356-04MS
 Misc :
 ALS Vial : 12 Sample Multiplier: 1

Instrument :
 ECD_L
ClientSampleId :
 CARBON-WATERMS

Manual Integrations
APPROVED

Reviewed By :Abdul Mirza 02/16/2025
 Supervised By :Ankita Jodhani 02/17/2025

Integration File signal 1: autoint1.e
 Integration File signal 2: autoint2.e
 Quant Time: Feb 15 02:21:14 2025
 Quant Method : Z:\pestpcbsrv\HPCHEM1\ECD_L\methods\PL012125.M
 Quant Title : GC Extractables
 QLast Update : Tue Jan 21 14:58:05 2025
 Response via : Initial Calibration
 Integrator: ChemStation

Volume Inj. : 1 µl
 Signal #1 Phase : ZB-MR1 Signal #2 Phase: ZB-MR2
 Signal #1 Info : 30M x 0.32mm x0.5 Signal #2 Info : 30M x 0.32mm x0.25µm

Compound	RT#1	RT#2	Resp#1	Resp#2	ng/ml	ng/ml

System Monitoring Compounds						
1) SA Tetrachlo...	3.538	2.773	54473738	64920663	20.230	19.889
28) SA Decachlor...	9.050	7.906	52398595	90763160	25.048	25.902
Target Compounds						
2) A alpha-BHC	3.994	3.275	180.2E6	236.8E6	47.010	48.428
3) MA gamma-BHC...	4.327	3.605	173.8E6	226.6E6	47.183	47.800
4) MA Heptachlor	4.914	3.943	164.0E6	232.0E6	50.045	49.850
5) MB Aldrin	5.255	4.222	153.3E6	212.9E6	46.866	46.676
6) B beta-BHC	4.525	3.905	77308206	96850947	48.097	48.488
7) B delta-BHC	4.772	4.134	169.2E6	227.3E6	48.280	47.833
8) B Heptachlo...	5.682	4.725	142.1E6	205.8E6	47.784	49.233
9) A Endosulfan I	6.067	5.094	130.4E6	196.5E6	49.333	50.679
10) B gamma-Chl...	5.938	4.975	139.6E6	217.0E6	50.066	51.213
11) B alpha-Chl...	6.016	5.038	139.3E6	212.9E6	49.957	50.853
12) B 4,4'-DDE	6.190	5.227	128.1E6	208.6E6	52.633	52.039
13) MA Dieldrin	6.342	5.359	135.7E6	216.5E6	48.896	50.401
14) MA Endrin	6.572	5.632	118.5E6	196.3E6	50.552	53.148m
15) B Endosulfa...	6.792	5.929	117.8E6	192.8E6	48.882	52.041
16) A 4,4'-DDD	6.708	5.782	99264060	165.1E6	52.229	52.316
17) MA 4,4'-DDT	7.021	6.032	109.2E6	187.6E6	55.350	57.649
18) B Endrin al...	6.921	6.108	93155353	150.1E6	47.918	49.300
19) B Endosulfa...	7.156	6.331	110.6E6	186.8E6	48.876	52.382
20) A Methoxychlor	7.497	6.606	57539494	98690913	55.146	55.192
21) B Endrin ke...	7.641	6.835	122.0E6	215.6E6	48.370	51.381
22) Mirex	8.113	7.015	95447676	165.5E6	45.833	48.925

(f)=RT Delta > 1/2 Window (#)=Amounts differ by > 25% (m)=manual int.

Data Path : Z:\pestpcbsrv\HPCHEM1\ECD_L\Data\PL021425\
 Data File : PL094197.D
 Signal(s) : Signal #1: ECD1A.ch Signal #2: ECD2B.ch
 Acq On : 14 Feb 2025 14:53
 Operator : AR\AJ
 Sample : Q1356-04MS
 Misc :
 ALS Vial : 12 Sample Multiplier: 1

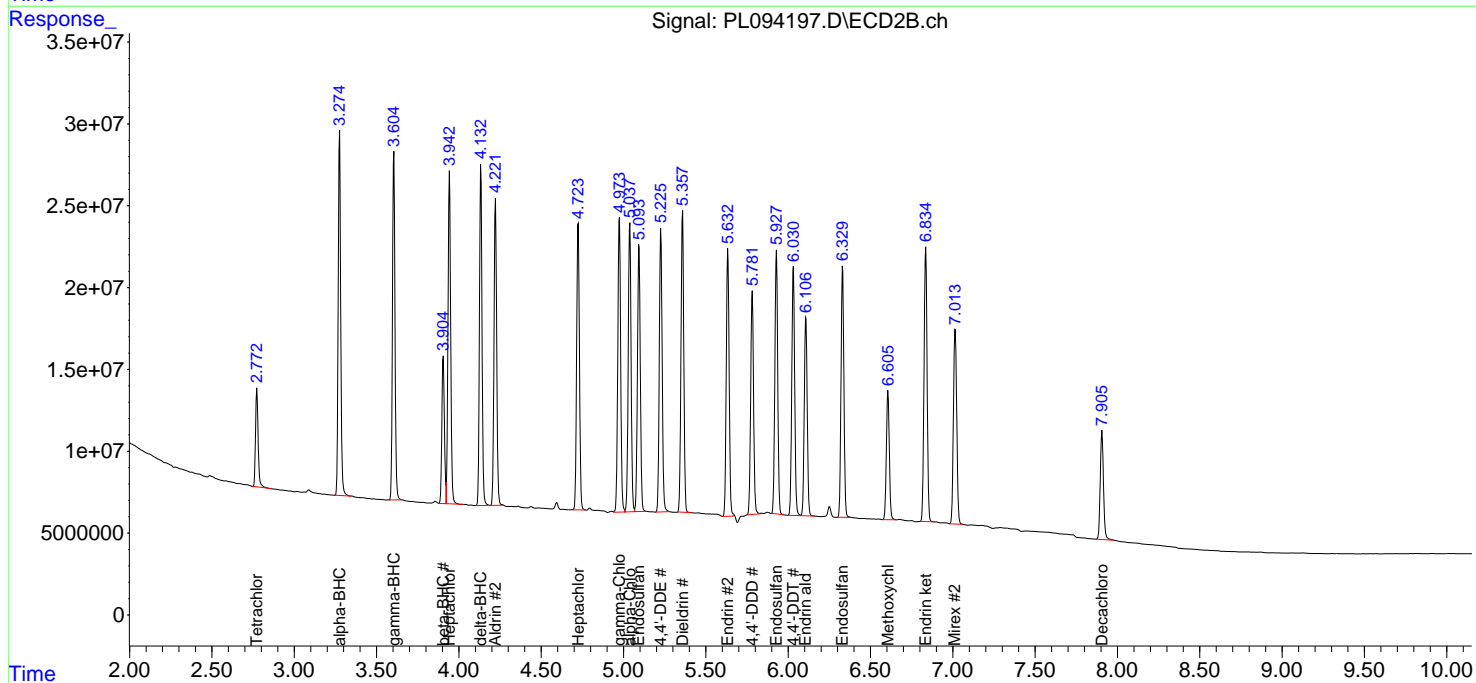
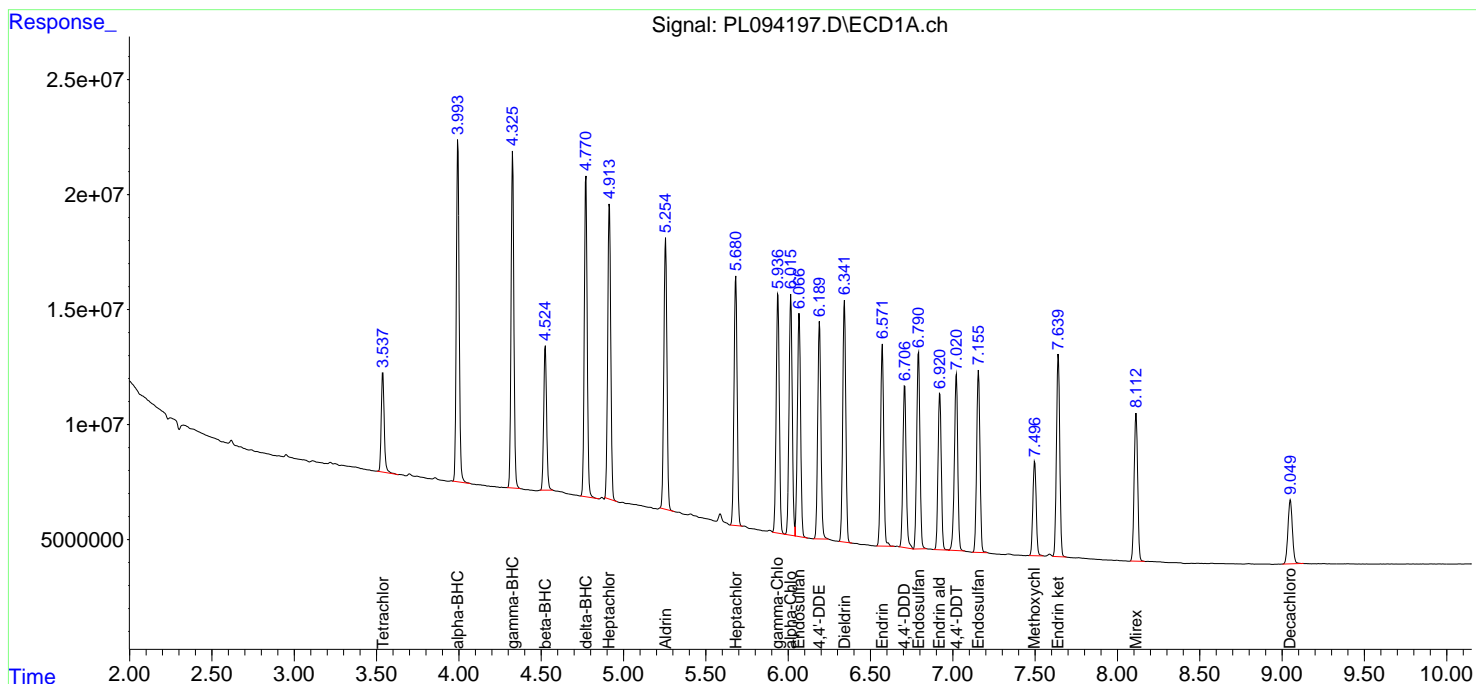
Instrument :
 ECD_L
 ClientSampleId :
 CARBON-WATERMS

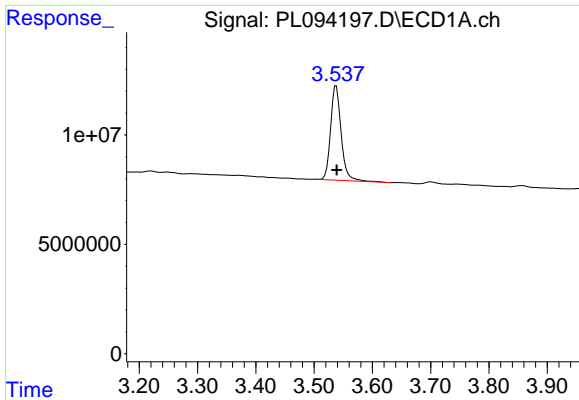
Manual Integrations
 APPROVED

Reviewed By :Abdul Mirza 02/16/2025
 Supervised By :Ankita Jodhani 02/17/2025

Integration File signal 1: autoint1.e
 Integration File signal 2: autoint2.e
 Quant Time: Feb 15 02:21:14 2025
 Quant Method : Z:\pestpcbsrv\HPCHEM1\ECD_L\methods\PL012125.M
 Quant Title : GC Extractables
 QLast Update : Tue Jan 21 14:58:05 2025
 Response via : Initial Calibration
 Integrator: ChemStation

Volume Inj. : 1 µl
 Signal #1 Phase : ZB-MR1 Signal #2 Phase: ZB-MR2
 Signal #1 Info : 30M x 0.32mm x0.5 Signal #2 Info : 30M x 0.32mm x0.25µm

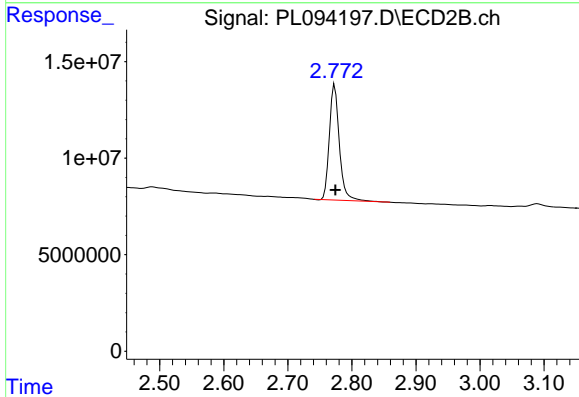




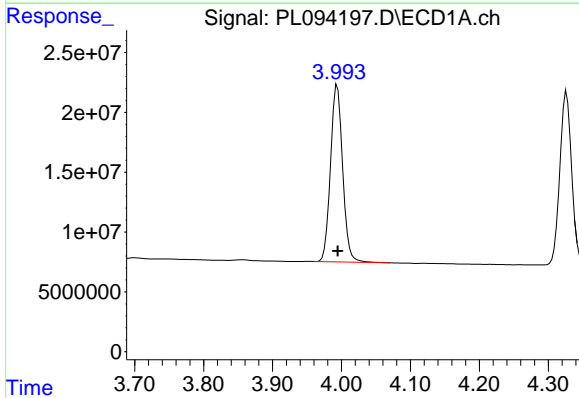
#1 Tetrachloro-m-xylene
 R.T.: 3.538 min
 Delta R.T.: -0.001 min
 Response: 54473738
 Conc: 20.23 ng/ml

Instrument :
 ECD_L
 ClientSampleId :
 CARBON-WATERMS

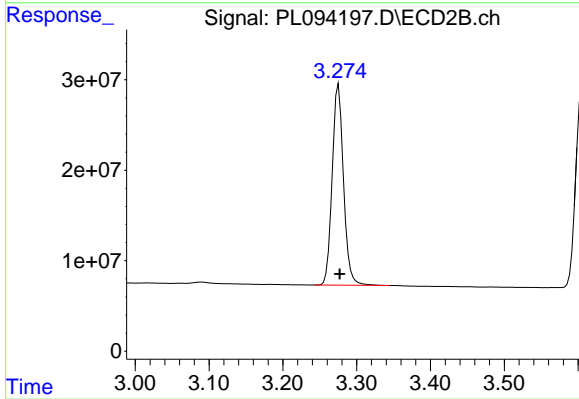
Manual Integrations
APPROVED
 Reviewed By :Abdul Mirza 02/16/2025
 Supervised By :Ankita Jodhani 02/17/2025



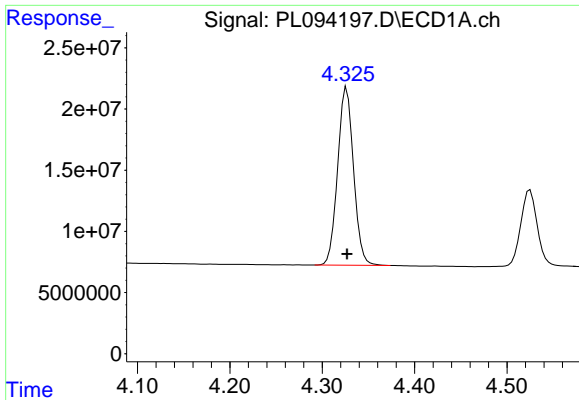
#1 Tetrachloro-m-xylene
 R.T.: 2.773 min
 Delta R.T.: -0.001 min
 Response: 64920663
 Conc: 19.89 ng/ml



#2 alpha-BHC
 R.T.: 3.994 min
 Delta R.T.: 0.000 min
 Response: 180228797
 Conc: 47.01 ng/ml



#2 alpha-BHC
 R.T.: 3.275 min
 Delta R.T.: -0.001 min
 Response: 236764408
 Conc: 48.43 ng/ml



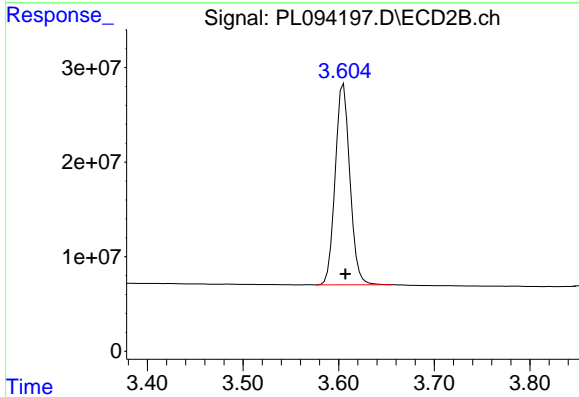
#3 gamma-BHC (Lindane)

R.T.: 4.327 min
 Delta R.T.: 0.000 min
 Response: 173766205
 Conc: 47.18 ng/ml

Instrument : ECD_L
 ClientSampleId : CARBON-WATERMS

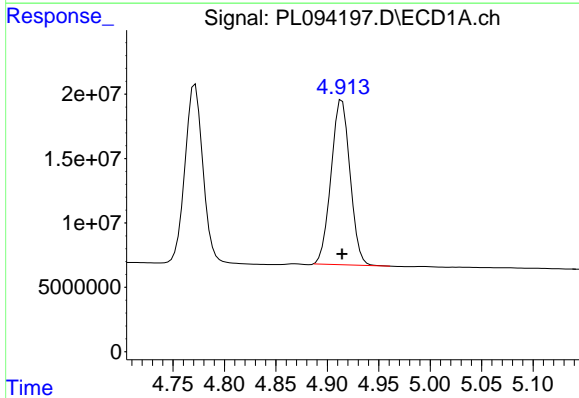
Manual Integrations
 APPROVED

Reviewed By :Abdul Mirza 02/16/2025
 Supervised By :Ankita Jodhani 02/17/2025



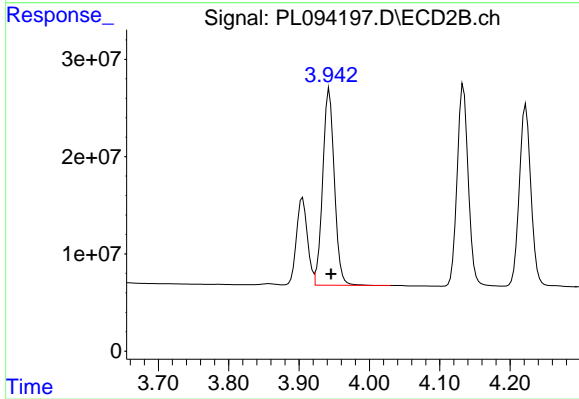
#3 gamma-BHC (Lindane)

R.T.: 3.605 min
 Delta R.T.: -0.002 min
 Response: 226630059
 Conc: 47.80 ng/ml



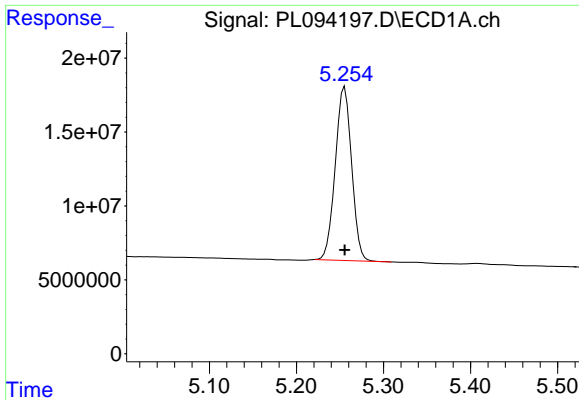
#4 Heptachlor

R.T.: 4.914 min
 Delta R.T.: 0.000 min
 Response: 164015409
 Conc: 50.05 ng/ml



#4 Heptachlor

R.T.: 3.943 min
 Delta R.T.: -0.002 min
 Response: 232040875
 Conc: 49.85 ng/ml



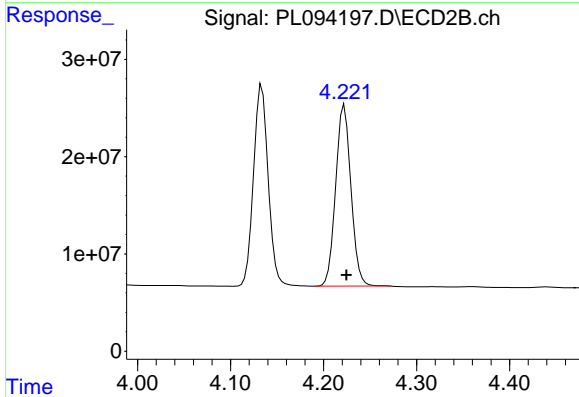
#5 Aldrin

R.T.: 5.255 min
 Delta R.T.: 0.000 min
 Response: 153342484
 Conc: 46.87 ng/ml

Instrument :
 ECD_L
 ClientSampleId :
 CARBON-WATERMS

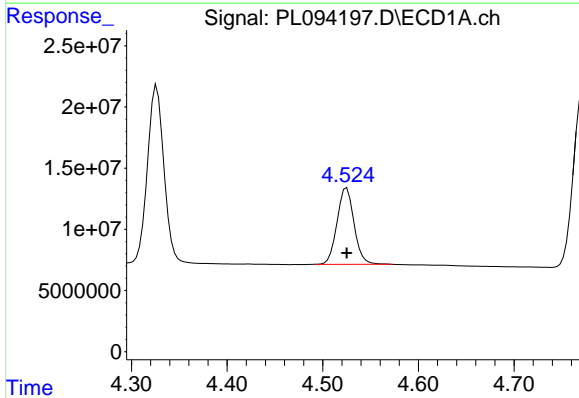
Manual Integrations
 APPROVED

Reviewed By :Abdul Mirza 02/16/2025
 Supervised By :Ankita Jodhani 02/17/2025



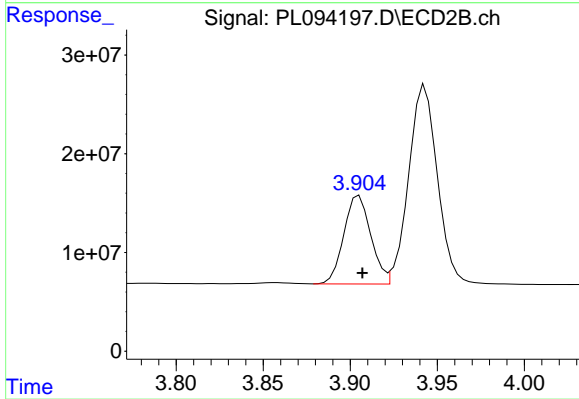
#5 Aldrin

R.T.: 4.222 min
 Delta R.T.: -0.002 min
 Response: 212924190
 Conc: 46.68 ng/ml



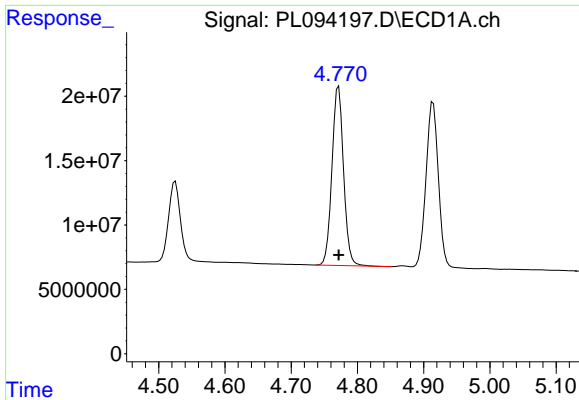
#6 beta-BHC

R.T.: 4.525 min
 Delta R.T.: 0.000 min
 Response: 77308206
 Conc: 48.10 ng/ml



#6 beta-BHC

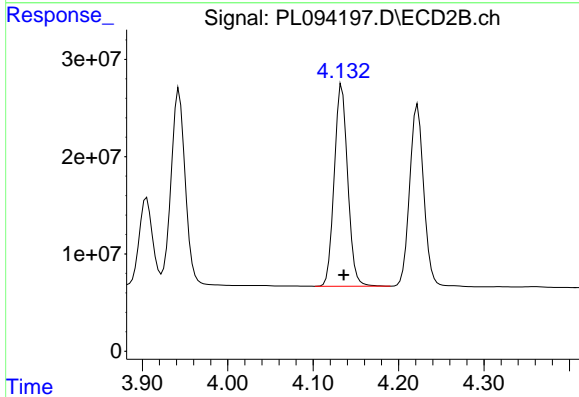
R.T.: 3.905 min
 Delta R.T.: -0.002 min
 Response: 96850947
 Conc: 48.49 ng/ml



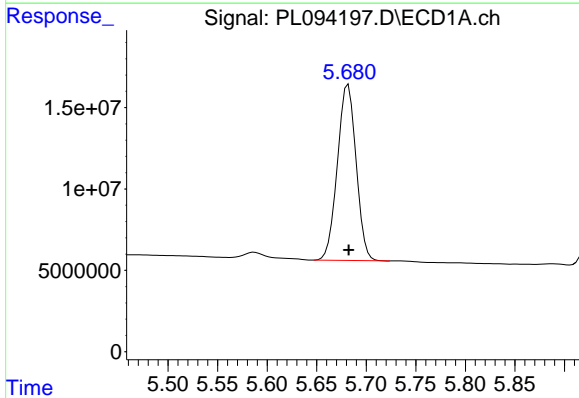
#7 delta-BHC
 R.T.: 4.772 min
 Delta R.T.: 0.000 min
 Response: 169234898
 Conc: 48.28 ng/ml

Instrument : ECD_L
 Client Sample Id : CARBON-WATERMS

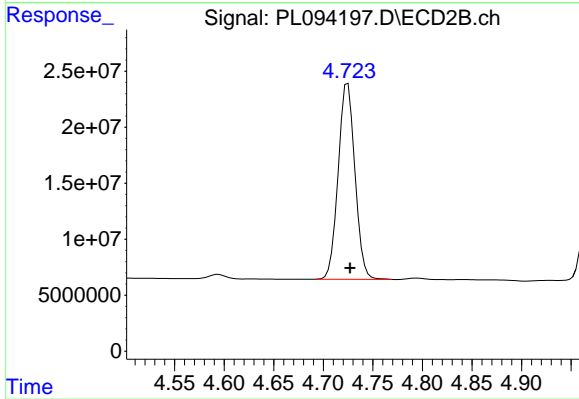
Manual Integrations
APPROVED
 Reviewed By :Abdul Mirza 02/16/2025
 Supervised By :Ankita Jodhani 02/17/2025



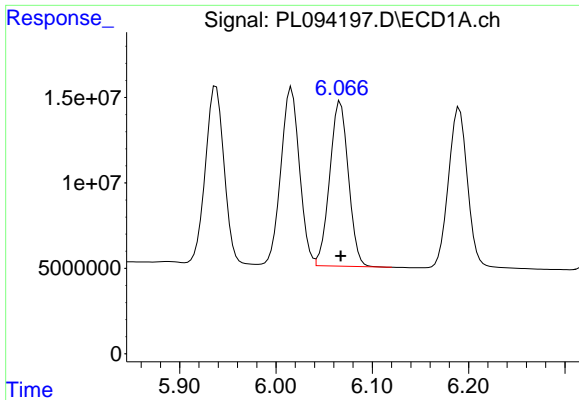
#7 delta-BHC
 R.T.: 4.134 min
 Delta R.T.: -0.002 min
 Response: 227267654
 Conc: 47.83 ng/ml



#8 Heptachlor epoxide
 R.T.: 5.682 min
 Delta R.T.: 0.000 min
 Response: 142100124
 Conc: 47.78 ng/ml



#8 Heptachlor epoxide
 R.T.: 4.725 min
 Delta R.T.: -0.002 min
 Response: 205808347
 Conc: 49.23 ng/ml



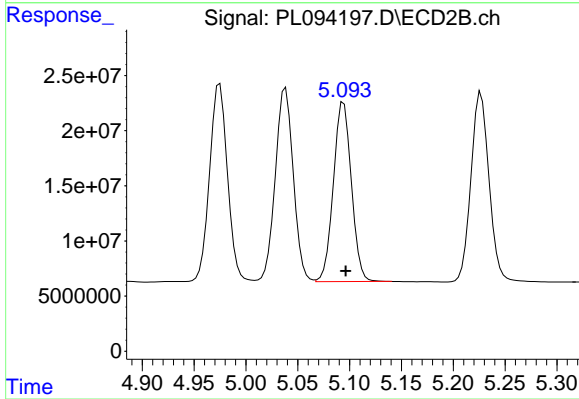
#9 Endosulfan I

R.T.: 6.067 min
 Delta R.T.: 0.000 min
 Response: 130379663
 Conc: 49.33 ng/ml

Instrument :
 ECD_L
 ClientSampleId :
 CARBON-WATERMS

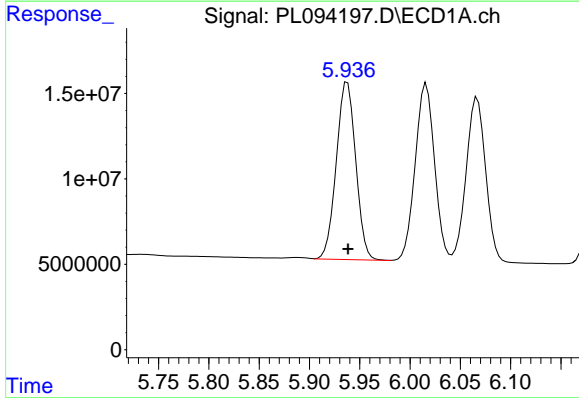
Manual Integrations
 APPROVED

Reviewed By :Abdul Mirza 02/16/2025
 Supervised By :Ankita Jodhani 02/17/2025



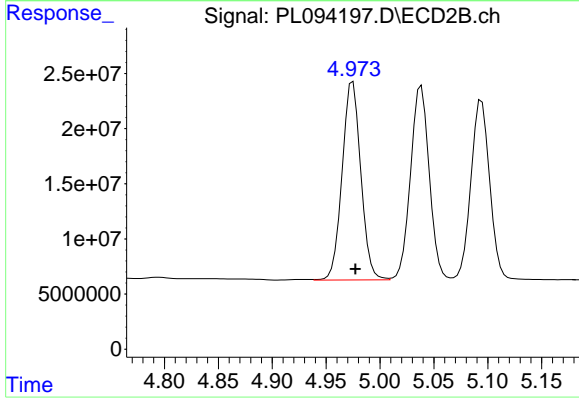
#9 Endosulfan I

R.T.: 5.094 min
 Delta R.T.: -0.002 min
 Response: 196477061
 Conc: 50.68 ng/ml



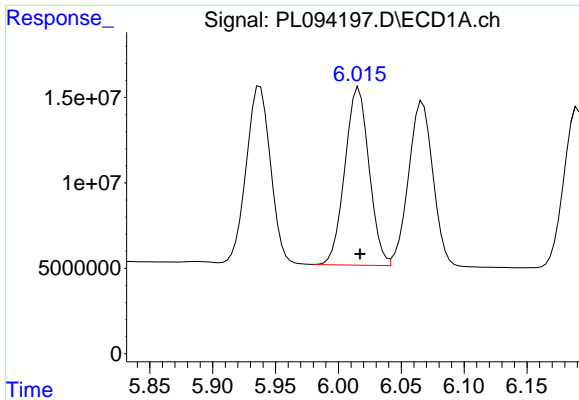
#10 gamma-Chlordane

R.T.: 5.938 min
 Delta R.T.: 0.000 min
 Response: 139552080
 Conc: 50.07 ng/ml



#10 gamma-Chlordane

R.T.: 4.975 min
 Delta R.T.: -0.002 min
 Response: 217019904
 Conc: 51.21 ng/ml



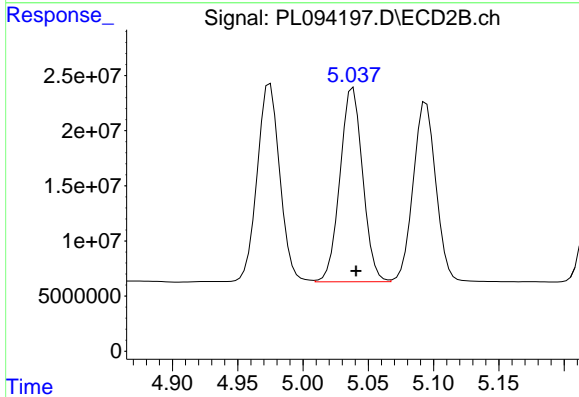
#11 alpha-Chlordane

R.T.: 6.016 min
 Delta R.T.: -0.001 min
 Response: 139299158
 Conc: 49.96 ng/ml

Instrument :
 ECD_L
 ClientSampleId :
 CARBON-WATERMS

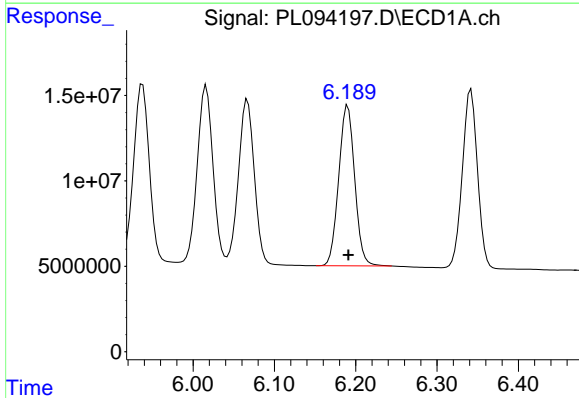
Manual Integrations
 APPROVED

Reviewed By :Abdul Mirza 02/16/2025
 Supervised By :Ankita Jodhani 02/17/2025



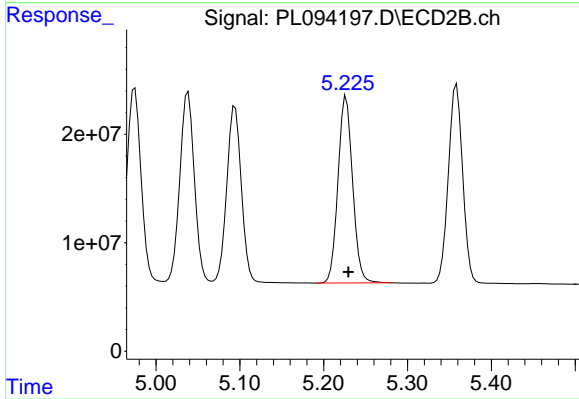
#11 alpha-Chlordane

R.T.: 5.038 min
 Delta R.T.: -0.002 min
 Response: 212897988
 Conc: 50.85 ng/ml



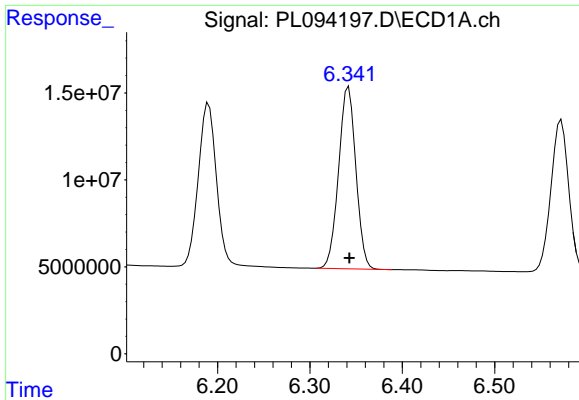
#12 4,4'-DDE

R.T.: 6.190 min
 Delta R.T.: 0.000 min
 Response: 128140071
 Conc: 52.63 ng/ml



#12 4,4'-DDE

R.T.: 5.227 min
 Delta R.T.: -0.003 min
 Response: 208647390
 Conc: 52.04 ng/ml



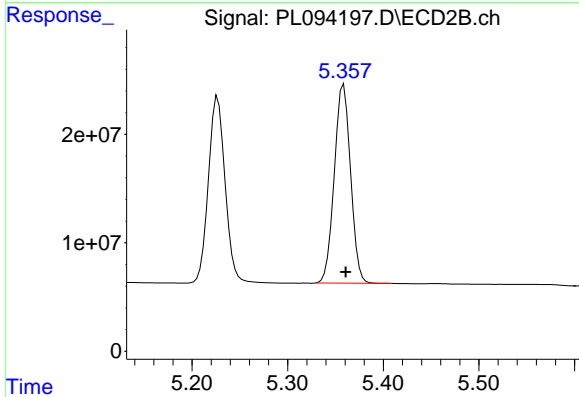
#13 Dieldrin

R.T.: 6.342 min
 Delta R.T.: 0.000 min
 Response: 135728956
 Conc: 48.90 ng/ml

Instrument :
 ECD_L
 ClientSampleId :
 CARBON-WATERMS

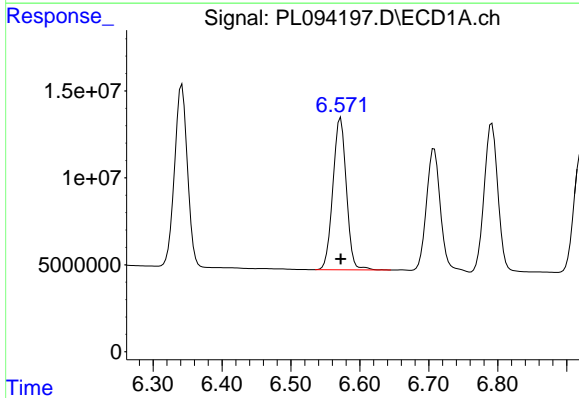
Manual Integrations
 APPROVED

Reviewed By :Abdul Mirza 02/16/2025
 Supervised By :Ankita Jodhani 02/17/2025



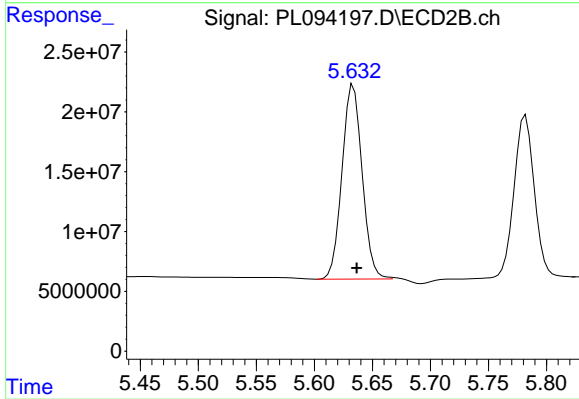
#13 Dieldrin

R.T.: 5.359 min
 Delta R.T.: -0.002 min
 Response: 216503716
 Conc: 50.40 ng/ml



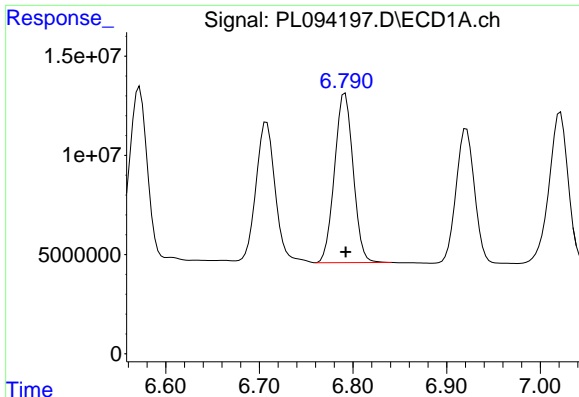
#14 Endrin

R.T.: 6.572 min
 Delta R.T.: 0.000 min
 Response: 118534270
 Conc: 50.55 ng/ml



#14 Endrin

R.T.: 5.632 min
 Delta R.T.: -0.004 min
 Response: 196259575
 Conc: 53.15 ng/ml m



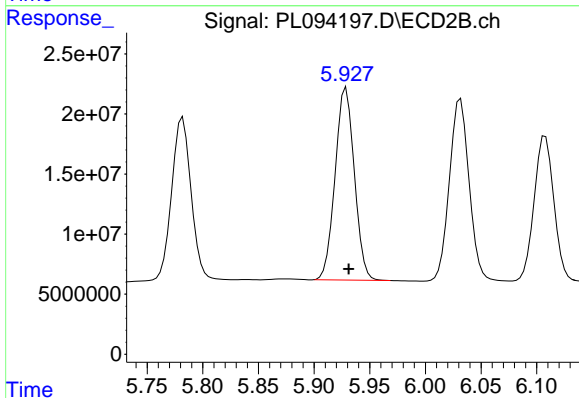
#15 Endosulfan II

R.T.: 6.792 min
 Delta R.T.: 0.000 min
 Response: 117773435
 Conc: 48.88 ng/ml

Instrument :
 ECD_L
 ClientSampleId :
 CARBON-WATERMS

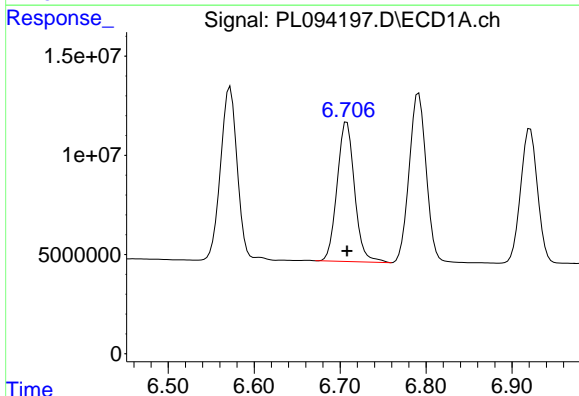
Manual Integrations
 APPROVED

Reviewed By :Abdul Mirza 02/16/2025
 Supervised By :Ankita Jodhani 02/17/2025



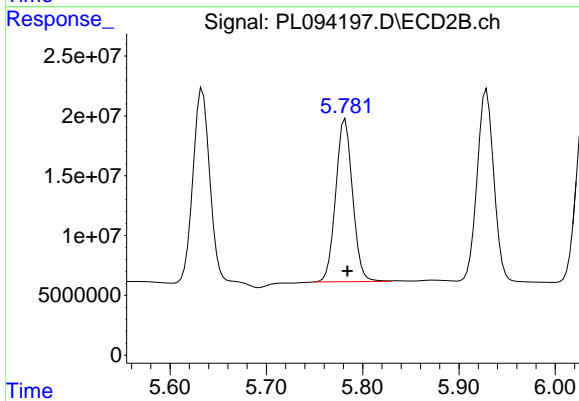
#15 Endosulfan II

R.T.: 5.929 min
 Delta R.T.: -0.003 min
 Response: 192751926
 Conc: 52.04 ng/ml



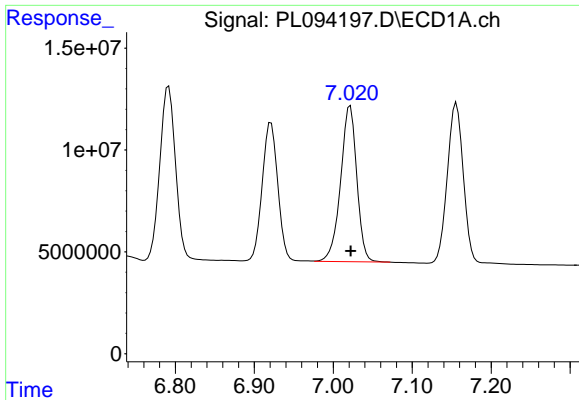
#16 4,4'-DDD

R.T.: 6.708 min
 Delta R.T.: 0.000 min
 Response: 99264060
 Conc: 52.23 ng/ml



#16 4,4'-DDD

R.T.: 5.782 min
 Delta R.T.: -0.002 min
 Response: 165137759
 Conc: 52.32 ng/ml



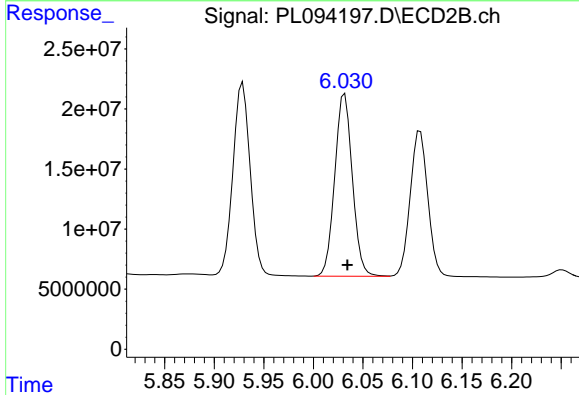
#17 4,4'-DDT

R.T.: 7.021 min
 Delta R.T.: 0.000 min
 Response: 109154015
 Conc: 55.35 ng/ml

Instrument :
 ECD_L
 ClientSampleId :
 CARBON-WATERMS

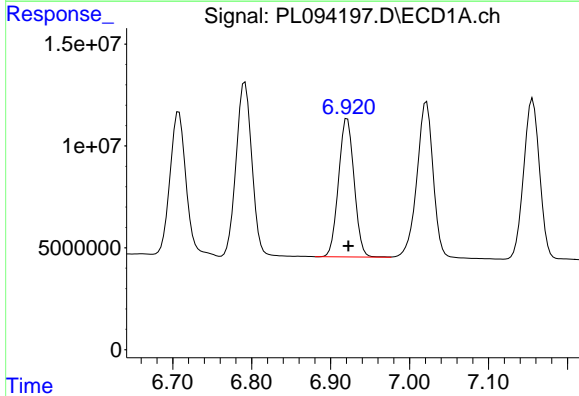
Manual Integrations
 APPROVED

Reviewed By :Abdul Mirza 02/16/2025
 Supervised By :Ankita Jodhani 02/17/2025



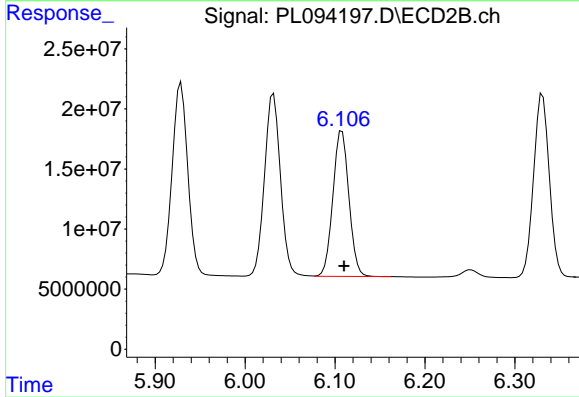
#17 4,4'-DDT

R.T.: 6.032 min
 Delta R.T.: -0.003 min
 Response: 187591754
 Conc: 57.65 ng/ml



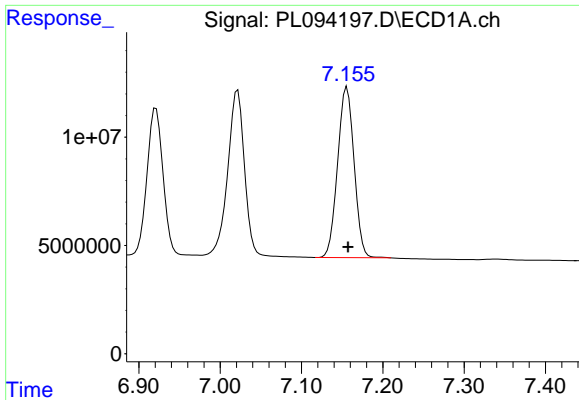
#18 Endrin aldehyde

R.T.: 6.921 min
 Delta R.T.: -0.002 min
 Response: 93155353
 Conc: 47.92 ng/ml



#18 Endrin aldehyde

R.T.: 6.108 min
 Delta R.T.: -0.002 min
 Response: 150101536
 Conc: 49.30 ng/ml

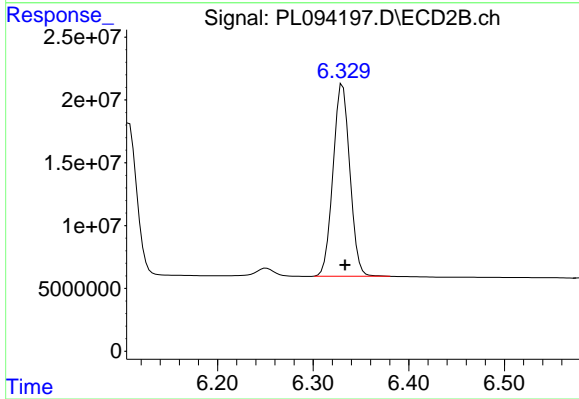


#19 Endosulfan Sulfate
 R.T.: 7.156 min
 Delta R.T.: -0.001 min
 Response: 110642903
 Conc: 48.88 ng/ml

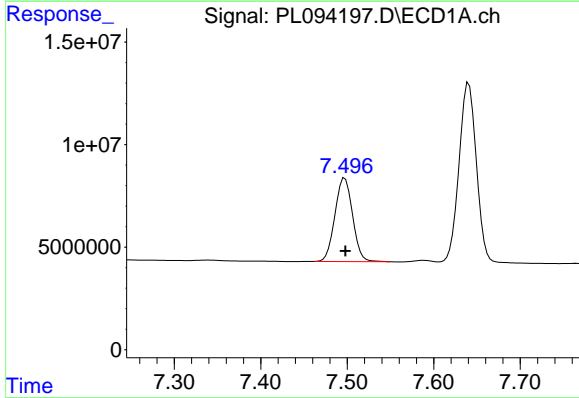
Instrument :
 ECD_L
 ClientSampleId :
 CARBON-WATERMS

Manual Integrations
 APPROVED

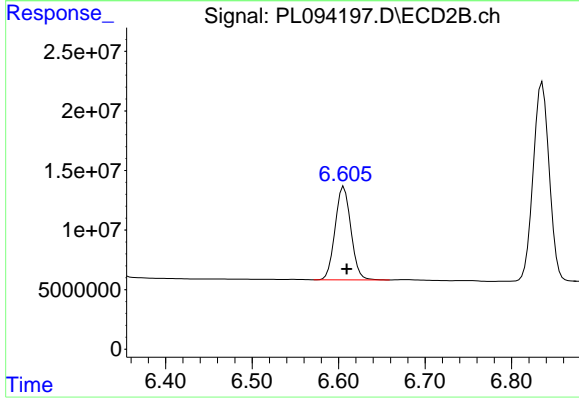
Reviewed By :Abdul Mirza 02/16/2025
 Supervised By :Ankita Jodhani 02/17/2025



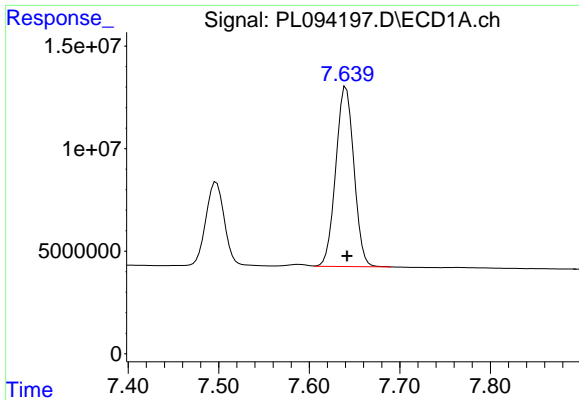
#19 Endosulfan Sulfate
 R.T.: 6.331 min
 Delta R.T.: -0.003 min
 Response: 186797276
 Conc: 52.38 ng/ml



#20 Methoxychlor
 R.T.: 7.497 min
 Delta R.T.: 0.000 min
 Response: 57539494
 Conc: 55.15 ng/ml



#20 Methoxychlor
 R.T.: 6.606 min
 Delta R.T.: -0.003 min
 Response: 98690913
 Conc: 55.19 ng/ml

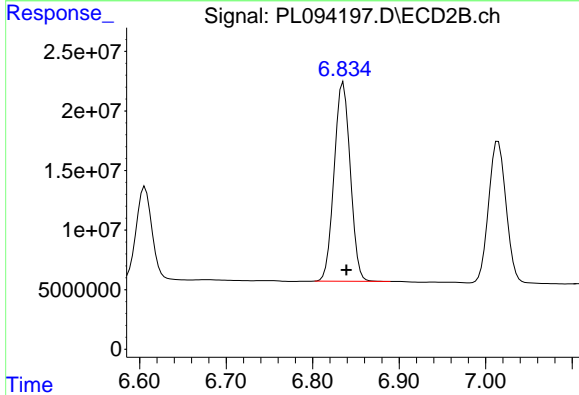


#21 Endrin ketone
 R.T.: 7.641 min
 Delta R.T.: -0.001 min
 Response: 122019796
 Conc: 48.37 ng/ml

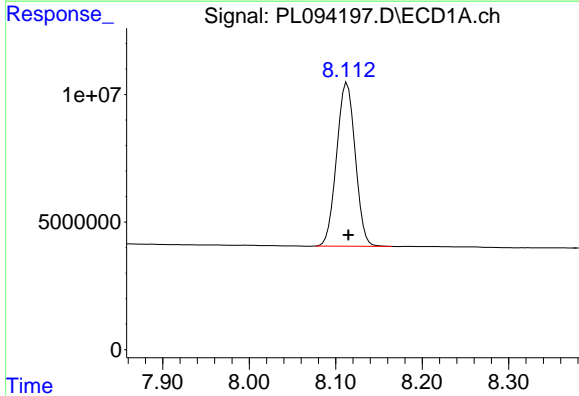
Instrument :
 ECD_L
 ClientSampleId :
 CARBON-WATERMS

Manual Integrations
 APPROVED

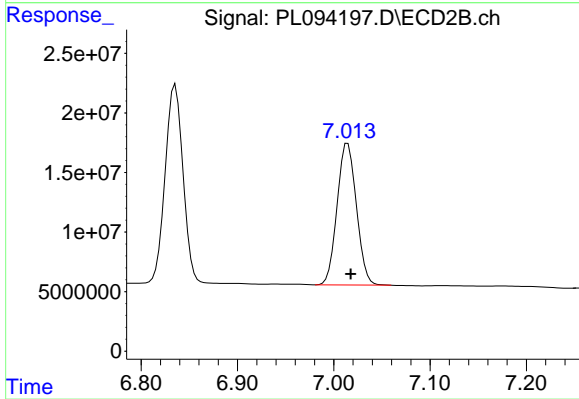
Reviewed By :Abdul Mirza 02/16/2025
 Supervised By :Ankita Jodhani 02/17/2025



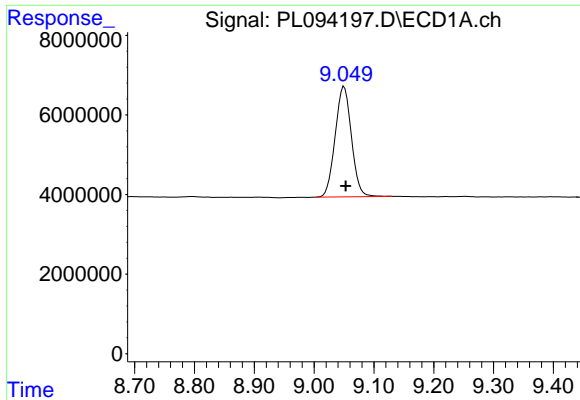
#21 Endrin ketone
 R.T.: 6.835 min
 Delta R.T.: -0.003 min
 Response: 21555000
 Conc: 51.38 ng/ml



#22 Mirex
 R.T.: 8.113 min
 Delta R.T.: -0.001 min
 Response: 95447676
 Conc: 45.83 ng/ml



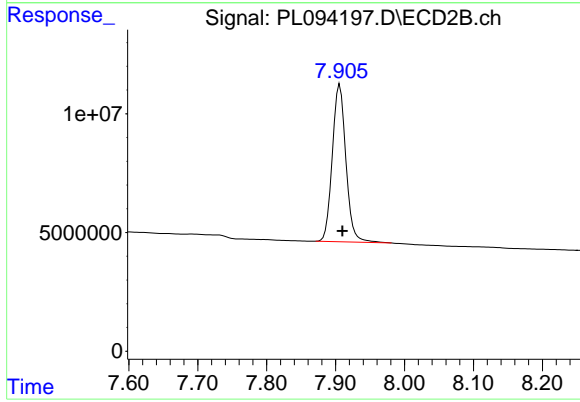
#22 Mirex
 R.T.: 7.015 min
 Delta R.T.: -0.003 min
 Response: 165458996
 Conc: 48.93 ng/ml



#28 Decachlorobiphenyl
 R.T.: 9.050 min
 Delta R.T.: -0.003 min
 Response: 52398595
 Conc: 25.05 ng/ml

Instrument :
 ECD_L
 ClientSampleId :
 CARBON-WATERMS

Manual Integrations
APPROVED
 Reviewed By :Abdul Mirza 02/16/2025
 Supervised By :Ankita Jodhani 02/17/2025



#28 Decachlorobiphenyl
 R.T.: 7.906 min
 Delta R.T.: -0.004 min
 Response: 90763160
 Conc: 25.90 ng/ml