

7470A
SFAM01.1

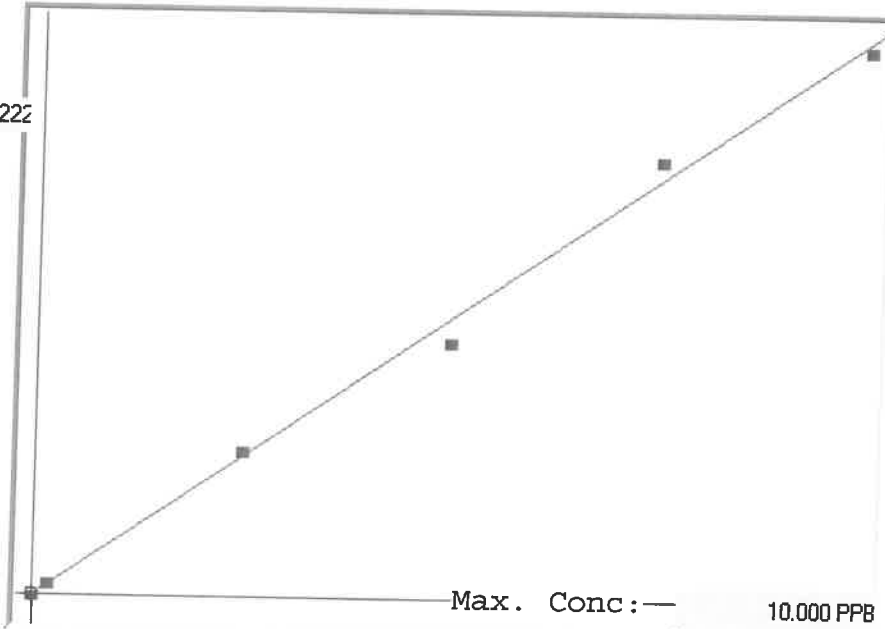
LB134685

INSTRUMENT ID: CV1

Linear

μ Abs.:

42222



A= 0.0000e+000

B= 2.3342e-004

C= 1.0178e-002

Rho= 0.9979778

Accept=Accepted

Std ID	Conc.	Calc.	Dev.	Mean	SD or %RSD	Rep 1	Rep 2	Rep 3	Rep 4	Rep 5	0/0 D
0.00	0.000	0.036	0.036	111	0.000	111					
0.05	0.050										
0.20	0.200	0.228	0.028	934	0.0 %	934					14
2.50	2.500	2.605	0.105	11118	0.0 %	11118					4
5.00	5.000	4.596	-0.404	19648	0.0 %	19648					-8
7.50	7.500	7.869	0.369	33667	0.0 %	33667					5
10.0	10.000	9.865	-0.135	42222	0.0 %	42222					-1

LB134685 INSTRUMENT ID : CV1

Method: SFAM01.1

Operator: Admin

Date of Analysis: 12 Feb 2025 13:26:52

Sample ID	Extended ID	μ Abs.	Conc.	Std Conc	Method	Units	Date	Type	Type
0.00 - 1	50	111	-	0.0000	SFAM01.1	PPB	12 Feb 2025 13:50:05	S	Std
0.20 - 1	50.2	934	-	0.2000	SFAM01.1	PPB	12 Feb 2025 13:52:22	S	Std
2.50 - 1	52.5	11118	-	2.5000	SFAM01.1	PPB	12 Feb 2025 13:54:39	S	Std
5.00 - 1	55	19648	-	5.0000	SFAM01.1	PPB	12 Feb 2025 13:56:56	S	Std
7.50 - 1	57.5	33667	-	7.5000	SFAM01.1	PPB	12 Feb 2025 13:59:13	S	Std
10.0 - 1	510	42222	-	10.0000	SFAM01.1	PPB	12 Feb 2025 14:01:31	S	Std
ICV02 - 1	ICV02	15609	3.6536	-	SFAM01.1	PPB	12 Feb 2025 14:04:35	U	SMPL
ICB02 - 1	ICB02	38	0.0190	-	SFAM01.1	PPB	12 Feb 2025 14:06:50	U	SMPL
CCV63 - 1	CCV63	21189	4.9560	-	SFAM01.1	PPB	12 Feb 2025 14:11:46	U	SMPL
CCB63 - 1	CCB63	-155	-0.0260	-	SFAM01.1	PPB	12 Feb 2025 14:14:01	U	SMPL
CRA - 1	CRA	878	0.2151	-	SFAM01.1	PPB	12 Feb 2025 14:16:19	U	SMPL
HighStd - 1	HighStd	42703	9.9778	-	SFAM01.1	PPB	12 Feb 2025 14:18:34	U	SMPL
ChkStd - 1	ChkStd	30728	7.1826	-	SFAM01.1	PPB	12 Feb 2025 14:20:49	U	SMPL
PB166705BL - 1	PBW	38	0.0190	-	SFAM01.1	PPB	12 Feb 2025 14:26:00	U	SMPL
PB166705BS - 1	LCSW	17312	4.0511	-	SFAM01.1	PPB	12 Feb 2025 14:28:16	U	SMPL
Q1343-04 - 1	WC-9	-200	-0.0365	-	SFAM01.1	PPB	12 Feb 2025 14:30:32	U	SMPL
Q1343-08 - 1	WC-10	49	0.0216	-	SFAM01.1	PPB	12 Feb 2025 14:32:50	U	SMPL
Q1343-12 - 1	WC-7	384	0.0998	-	SFAM01.1	PPB	12 Feb 2025 14:35:08	U	SMPL
Q1343-16 - 1	WC-13	127	0.0398	-	SFAM01.1	PPB	12 Feb 2025 14:37:26	U	SMPL
Q1343-20 - 1	WC-14	382	0.0993	-	SFAM01.1	PPB	12 Feb 2025 14:39:41	U	SMPL
CCV64 - 1	CCV64	19711	4.6110	-	SFAM01.1	PPB	12 Feb 2025 14:44:38	U	SMPL
CCB64 - 1	CCB64	-158	-0.0267	-	SFAM01.1	PPB	12 Feb 2025 14:46:54	U	SMPL
Q1344-02 - 1	SOIL-1	412	0.1063	-	SFAM01.1	PPB	12 Feb 2025 14:49:12	U	SMPL
Q1344-04 - 1	SOIL-2	472	0.1204	-	SFAM01.1	PPB	12 Feb 2025 14:51:27	U	SMPL
Q1346-02 - 1	SOIL-COMP	162	0.0480	-	SFAM01.1	PPB	12 Feb 2025 14:53:42	U	SMPL
Q1346-02DUP - 1	SOIL-COMPDUP	111	0.0361	-	SFAM01.1	PPB	12 Feb 2025 14:55:58	U	SMPL
Q1346-02MS - 1	SOIL-COMPMS	17732	4.1491	-	SFAM01.1	PPB	12 Feb 2025 14:58:16	U	SMPL
Q1346-02MSD - 1	SOIL-COMPMSD	16340	3.8242	-	SFAM01.1	PPB	12 Feb 2025 15:00:33	U	SMPL
PB166706BL - 1	PBW	-38	0.0013	-	SFAM01.1	PPB	12 Feb 2025 15:02:51	U	SMPL
PB166706BS - 1	LCSW	16556	3.8746	-	SFAM01.1	PPB	12 Feb 2025 15:07:45	U	SMPL
Q1348-01 - 1	TWP-1-WC	60	0.0242	-	SFAM01.1	PPB	12 Feb 2025 15:10:02	U	SMPL
Q1349-01 - 1	TWP-1-PERMIT	3232	0.7646	-	SFAM01.1	PPB	12 Feb 2025 15:12:19	U	SMPL
CCV65 - 1	CCV65	22424	5.2443	-	SFAM01.1	PPB	12 Feb 2025 15:19:56	U	SMPL
CCB65 - 1	CCB65	-290	-0.0575	-	SFAM01.1	PPB	12 Feb 2025 15:22:13	U	SMPL
Q1349-01DUP - 1	TWP-1-PERMITDUP	3614	0.8537	-	SFAM01.1	PPB	12 Feb 2025 15:24:31	U	SMPL
Q1349-01MS - 1	TWP-1-PERMITMS	18112	4.2378	-	SFAM01.1	PPB	12 Feb 2025 15:26:46	U	SMPL
Q1349-01MSD - 1	TWP-1-PERMITMSD	17741	4.1512	-	SFAM01.1	PPB	12 Feb 2025 15:29:04	U	SMPL
Q1355-01 - 1	RW1	10976	2.5722	-	SFAM01.1	PPB	12 Feb 2025 15:31:22	U	SMPL
Q1355-02 - 1	MW2	3417	0.8078	-	SFAM01.1	PPB	12 Feb 2025 15:33:40	U	SMPL
PB166651TB - 1	PB166651TB	353	0.0926	-	SFAM01.1	PPB	12 Feb 2025 15:35:58	U	SMPL
Q1346-02LX5 - 1		24	0.0158	-	SFAM01.1	PPB	12 Feb 2025 15:38:15	U	SMPL
Q1346-02A - 1		16490	3.8592	-	SFAM01.1	PPB	12 Feb 2025 15:40:32	U	SMPL
Q1349-01LX5 - 1		830	0.2039	-	SFAM01.1	PPB	12 Feb 2025 15:45:56	U	SMPL
Q1349-01A - 1		18330	4.2887	-	SFAM01.1	PPB	12 Feb 2025 15:48:12	U	SMPL
CCV66 - 1	CCV66	22142	5.1785	-	SFAM01.1	PPB	12 Feb 2025 15:50:27	U	SMPL
CCB66 - 1	CCB66	-224	-0.0421	-	SFAM01.1	PPB	12 Feb 2025 15:52:45	U	SMPL