

LB134760

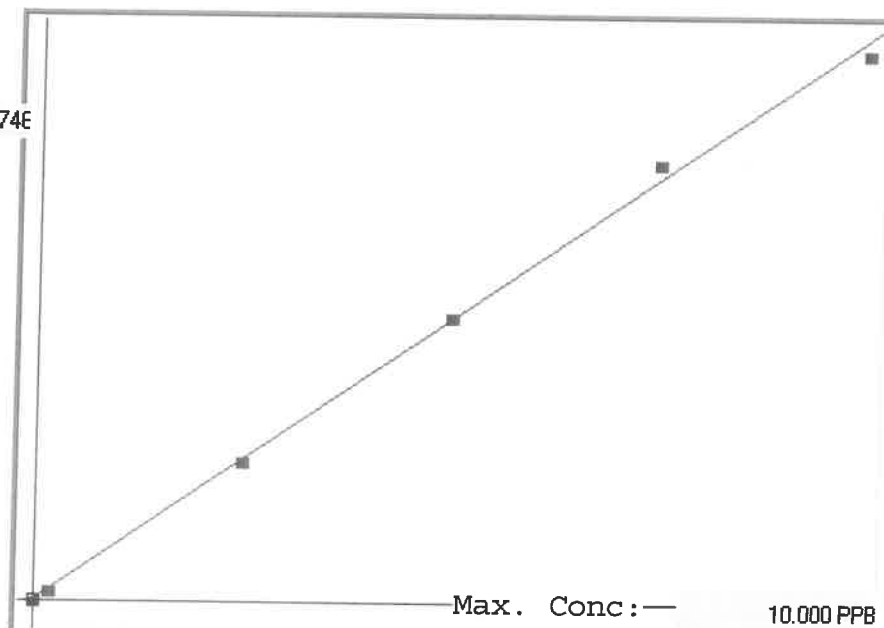
7470A

INSTRUMENT ID: CV1

Linear

μ Abs.:

39746



A= 0.0000e+000

B= 2.4598e-004

C= -1.9580e-002

Rho= 0.9991198

Accept=Accepted

Std ID	Conc.	Calc.	Dev.	Mean	SD or %RSD	Rep 1	Rep 2	Rep 3	Rep 4	Rep 5	o/d
0.0	0.000	-0.037	-0.037	-72	0.000	-72	0				
0.2	0.200	0.173	-0.027	783	0.0 %	783					-14
2.5	2.500	2.483	-0.017	10172	0.0 %	10172					-1
5.0	5.000	5.040	0.040	20570	0.0 %	20570					1
7.5	7.500	7.784	0.284	31725	0.0 %	31725					4
10.0	10.000	9.757	-0.243	39746	0.0 %	39746					-2

LB134760 INSTRUMENT ID : CV1

Method: 7470A

Operator: Admin

Date of Analysis: 20 Feb 2025 11:48:23

Sample ID	Extended ID	μ Abs.	Conc.	Std Conc	Method	Units	Date	Type	Type
0.0 - 1	50	-72	-	0.0000	7470A	PPB	20 Feb 2025 12:05:01	S	Std
0.2 - 1	50.2	783	-	0.2000	7470A	PPB	20 Feb 2025 12:07:18	S	Std
2.5 - 1	52.5	10172	-	2.5000	7470A	PPB	20 Feb 2025 12:12:31	S	Std
5.0 - 1	55	20570	-	5.0000	7470A	PPB	20 Feb 2025 12:14:47	S	Std
7.5 - 1	57.5	31725	-	7.5000	7470A	PPB	20 Feb 2025 12:17:06	S	Std
10.0 - 1	58	39746	-	10.0000	7470A	PPB	20 Feb 2025 12:19:24	S	Std
ICV11 - 1	ICV11	15879	3.8864	-7470A	PPB	PPB	20 Feb 2025 12:23:09	U	SMPL
ICB11 - 1	ICB11	-87	-0.0410	-7470A	PPB	PPB	20 Feb 2025 12:28:07	U	SMPL
CCV91 - 1	CCV91	21240	5.2051	-7470A	PPB	PPB	20 Feb 2025 12:30:22	U	SMPL
CCB91 - 1	CCB91	-141	-0.0543	-7470A	PPB	PPB	20 Feb 2025 12:35:14	U	SMPL
CRA - 1	CRA	952	0.2146	-7470A	PPB	PPB	20 Feb 2025 12:46:56	U	SMPL
HighStd - 1	HighStd	40453	9.9311	-7470A	PPB	PPB	20 Feb 2025 12:49:10	U	SMPL
ChkStd - 1	ChkStd	29849	7.3227	-7470A	PPB	PPB	20 Feb 2025 12:51:26	U	SMPL
PB166807BL - 1	PBW	-117	-0.0484	-7470A	PPB	PPB	20 Feb 2025 12:56:26	U	SMPL
PB166807BS - 1	LCSW	18338	4.4912	-7470A	PPB	PPB	20 Feb 2025 12:58:41	U	SMPL
Q1390-02 - 1	3772	-245	-0.0798	-7470A	PPB	PPB	20 Feb 2025 13:00:58	U	SMPL
Q1393-02 - 1	SOIL-COMP	-23	-0.0252	-7470A	PPB	PPB	20 Feb 2025 13:03:17	U	SMPL
Q1393-02DUP - 1	SOIL-COMPDUP	-5	-0.0208	-7470A	PPB	PPB	20 Feb 2025 13:05:33	U	SMPL
Q1393-02MS - 1	SOIL-COMPMS	18210	4.4598	-7470A	PPB	PPB	20 Feb 2025 13:07:51	U	SMPL
Q1393-02MSD - 1	SOIL-COMPMSD	16607	4.0654	-7470A	PPB	PPB	20 Feb 2025 13:10:06	U	SMPL
CCV92 - 1	CCV92	20887	5.1183	-7470A	PPB	PPB	20 Feb 2025 13:12:38	U	SMPL
CCB92 - 1	CCB92	-26	-0.0260	-7470A	PPB	PPB	20 Feb 2025 13:17:30	U	SMPL
Q1393-04 - 1	OD-281	-143	-0.0548	-7470A	PPB	PPB	20 Feb 2025 13:19:45	U	SMPL
PB166808BL - 1	PBW	173	0.0230	-7470A	PPB	PPB	20 Feb 2025 13:22:00	U	SMPL
PB166808BS - 1	LCSW	14517	3.5513	-7470A	PPB	PPB	20 Feb 2025 13:24:16	U	SMPL
Q1381-01 - 1	OUTFALL-001	-234	-0.0771	-7470A	PPB	PPB	20 Feb 2025 13:26:32	U	SMPL
Q1381-02 - 1	OUTFALL-002	26	-0.0132	-7470A	PPB	PPB	20 Feb 2025 13:28:52	U	SMPL
Q1390-01 - 1	3771	-4	-0.0206	-7470A	PPB	PPB	20 Feb 2025 13:31:08	U	SMPL
Q1392-01 - 1	435	97	0.0043	-7470A	PPB	PPB	20 Feb 2025 13:33:25	U	SMPL
Q1393-05 - 1	PURGE-WATER-COMP	-98	-0.0437	-7470A	PPB	PPB	20 Feb 2025 13:35:42	U	SMPL
Q1393-05DUP - 1	PURGE-WATER-COMPDUP	24	-0.0137	-7470A	PPB	PPB	20 Feb 2025 13:37:59	U	SMPL
Q1393-05MS - 1	PURGE-WATER-COMPMS	15219	3.7240	-7470A	PPB	PPB	20 Feb 2025 13:40:15	U	SMPL
CCV93 - 1	CCV93	19617	4.8059	-7470A	PPB	PPB	20 Feb 2025 13:42:30	U	SMPL
CCB93 - 1	CCB93	72	-0.0019	-7470A	PPB	PPB	20 Feb 2025 13:47:40	U	SMPL
Q1393-05MSD - 1	PURGE-WATER-COMPMSD	15424	3.7745	-7470A	PPB	PPB	20 Feb 2025 13:49:55	U	SMPL
PB166784TB - 1	PB166784TB	-43	-0.0302	-7470A	PPB	PPB	20 Feb 2025 13:54:58	U	SMPL
Q1393-02LX5 - 1		-9	-0.0218	-7470A	PPB	PPB	20 Feb 2025 13:57:13	U	SMPL
Q1393-02A - 1		17096	4.1857	-7470A	PPB	PPB	20 Feb 2025 13:59:30	U	SMPL
Q1393-05LX5 - 1		-115	-0.0479	-7470A	PPB	PPB	20 Feb 2025 14:01:45	U	SMPL
Q1393-05A - 1		14917	3.6497	-7470A	PPB	PPB	20 Feb 2025 14:04:03	U	SMPL
CCV94 - 1	CCV94	20340	4.9837	-7470A	PPB	PPB	20 Feb 2025 14:06:19	U	SMPL
CCB94 - 1	CCB94	-35	-0.0282	-7470A	PPB	PPB	20 Feb 2025 14:08:42	U	SMPL