

Data Path : Z:\pestpcbsrv\HPCHEM1\ECD_P\Data\PP022625\
 Data File : PP070068.D
 Signal(s) : Signal #1: ECD1A.ch Signal #2: ECD2B.ch
 Acq On : 26 Feb 2025 13:02
 Operator : YP\AJ
 Sample : PB166872BL
 Misc :
 ALS Vial : 7 Sample Multiplier: 1

Instrument :
 ECD_P
ClientSampleId :
 PB166872BL

Integration File signal 1: autoint1.e
 Integration File signal 2: autoint2.e
 Quant Time: Feb 27 01:44:14 2025
 Quant Method : Z:\pestpcbsrv\HPCHEM1\ECD_P\methods\PP022425.M
 Quant Title : GC EXTRACTABLES
 QLast Update : Tue Feb 25 05:10:19 2025
 Response via : Initial Calibration
 Integrator: ChemStation

Volume Inj. : 2 µl
 Signal #1 Phase : ZB-MR1 Signal #2 Phase: ZB-MR2
 Signal #1 Info : 30Mx0.32mmx 0.50µ Signal #2 Info : 30M x 0.32mm x 0.25µm

Compound	RT#1	RT#2	Resp#1	Resp#2	ng/ml	ng/ml

System Monitoring Compounds						
1) SA Tetrachlo...	4.532	3.832	38617010	25882076	26.313	27.072
2) SA Decachlor...	10.262	8.889	28591957	25804708	25.102	23.803

Target Compounds

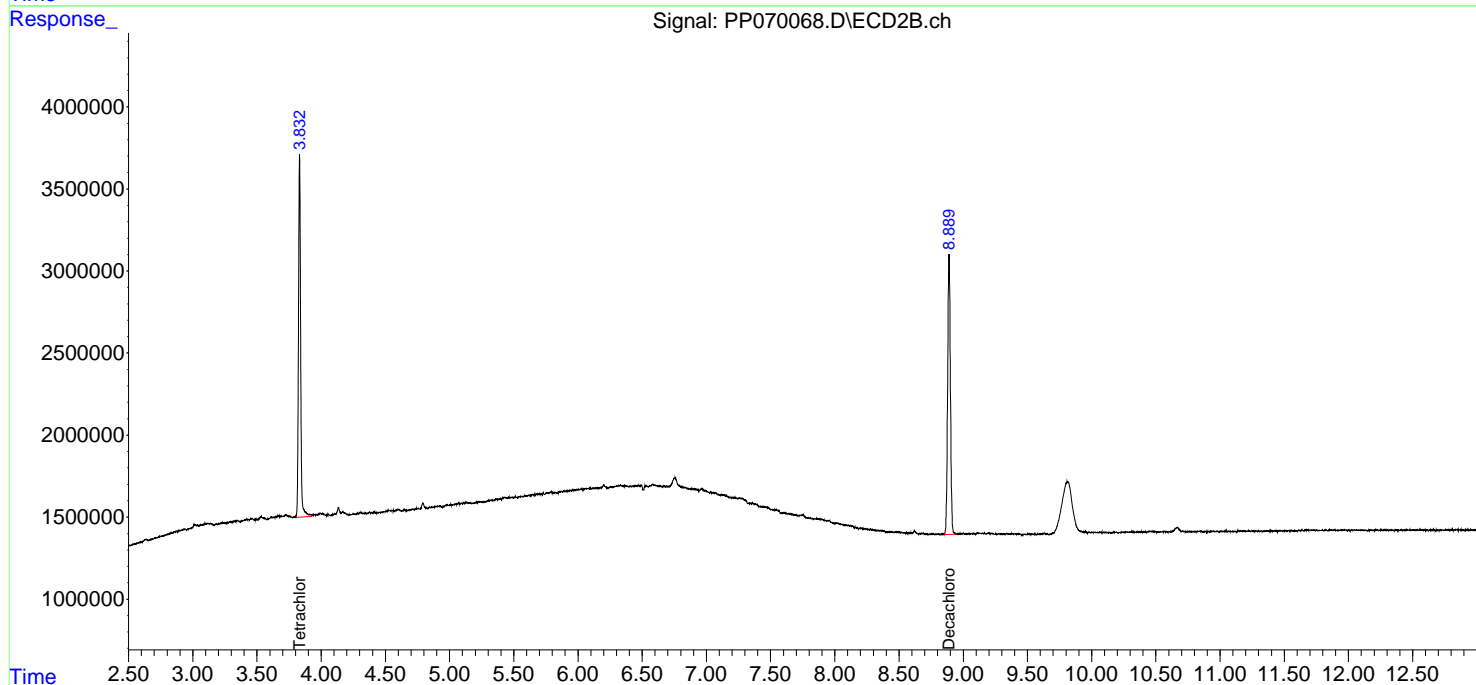
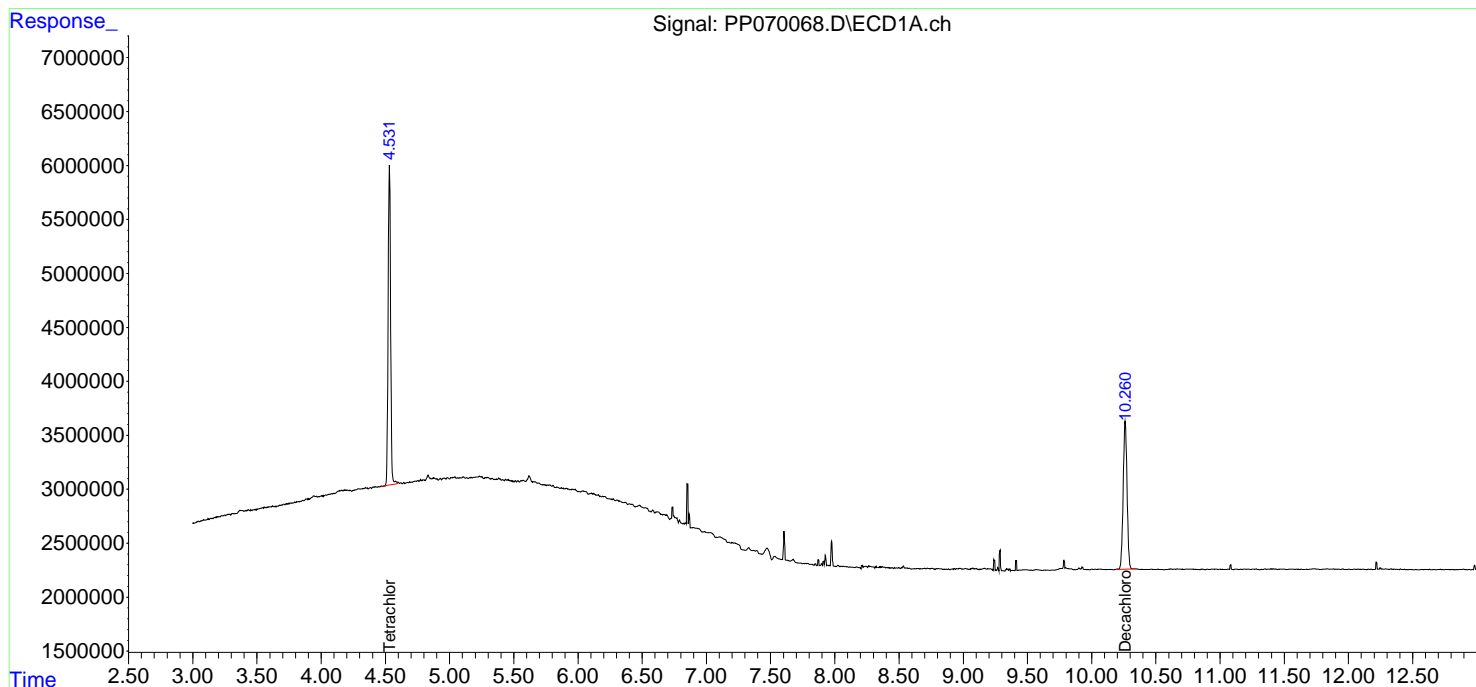
(f)=RT Delta > 1/2 Window (#)=Amounts differ by > 25% (m)=manual int.

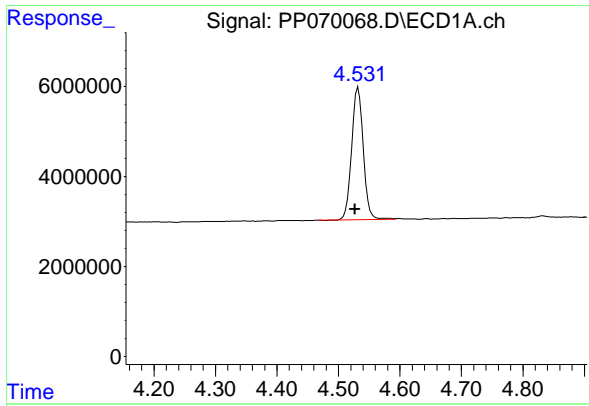
Data Path : Z:\pestpcbsrv\HPCHEM1\ECD_P\Data\PP022625\
 Data File : PP070068.D
 Signal(s) : Signal #1: ECD1A.ch Signal #2: ECD2B.ch
 Acq On : 26 Feb 2025 13:02
 Operator : YP\AJ
 Sample : PB166872BL
 Misc :
 ALS Vial : 7 Sample Multiplier: 1

Instrument :
 ECD_P
 ClientSampleId :
 PB166872BL

Integration File signal 1: autoint1.e
 Integration File signal 2: autoint2.e
 Quant Time: Feb 27 01:44:14 2025
 Quant Method : Z:\pestpcbsrv\HPCHEM1\ECD_P\methods\PP022425.M
 Quant Title : GC EXTRACTABLES
 QLast Update : Tue Feb 25 05:10:19 2025
 Response via : Initial Calibration
 Integrator: ChemStation

Volume Inj. : 2 µl
 Signal #1 Phase : ZB-MR1 Signal #2 Phase: ZB-MR2
 Signal #1 Info : 30Mx0.32mmx 0.50µm Signal #2 Info : 30M x 0.32mm x 0.25µm

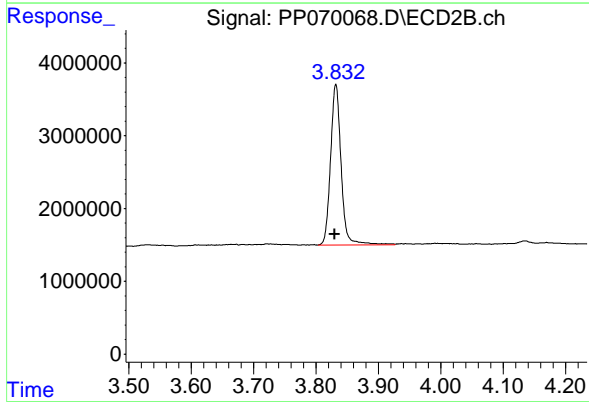




#1 Tetrachloro-m-xylene

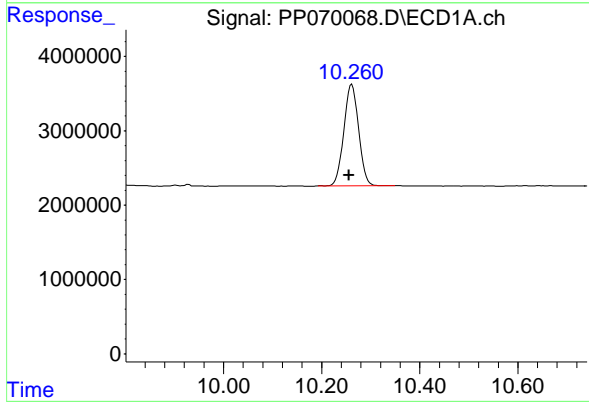
R.T.: 4.532 min
 Delta R.T.: 0.005 min
 Response: 38617010
 Conc: 26.31 ng/ml

Instrument :
 ECD_P
 ClientSampleId :
 PB166872BL



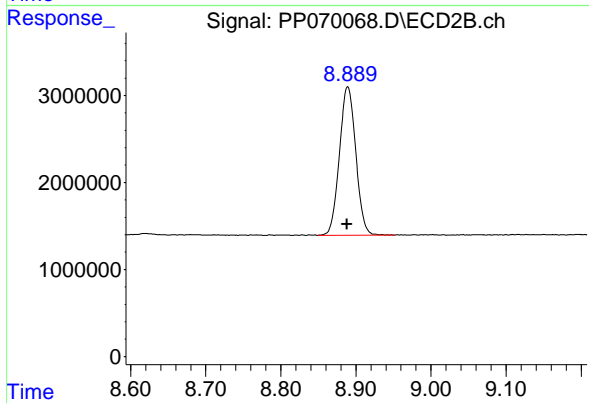
#1 Tetrachloro-m-xylene

R.T.: 3.832 min
 Delta R.T.: 0.002 min
 Response: 25882076
 Conc: 27.07 ng/ml



#2 Decachlorobiphenyl

R.T.: 10.262 min
 Delta R.T.: 0.006 min
 Response: 28591957
 Conc: 25.10 ng/ml



#2 Decachlorobiphenyl

R.T.: 8.889 min
 Delta R.T.: 0.001 min
 Response: 25804708
 Conc: 23.80 ng/ml