

Data Path : Z:\pestpcbsrv\HPCHEM1\ECD_0\Data\P0022825\
 Data File : PO109593.D
 Signal(s) : Signal #1: ECD1A.ch Signal #2: ECD2B.ch
 Acq On : 28 Feb 2025 15:41
 Operator : YP/AJ
 Sample : Q1433-05DL 3X
 Misc :
 ALS Vial : 19 Sample Multiplier: 1

Instrument :
 ECD_0
 ClientSampleId :
 K084-2BDL

Integration File signal 1: autoint1.e
 Integration File signal 2: autoint2.e
 Quant Time: Mar 01 00:25:13 2025
 Quant Method : Z:\pestpcbsrv\HPCHEM1\ECD_0\methods\P0022025.M
 Quant Title : GC EXTRACTABLES
 QLast Update : Fri Feb 21 04:40:23 2025
 Response via : Initial Calibration
 Integrator: ChemStation

Volume Inj. : 2 µl
 Signal #1 Phase : ZB-MR1 Signal #2 Phase: ZB-MR2
 Signal #1 Info : 30Mx0.32mmx 0.50µ Signal #2 Info : 30M x 0.32mm x 0.25µm

Compound	RT#1	RT#2	Resp#1	Resp#2	ng/ml	ng/ml
System Monitoring Compounds						
1) SA Tetrachlo...	3.695	3.694	86369133	46497527	9.125	8.883
2) SA Decachlor...	8.754	8.706	569.6E6	228.0E6	66.213	71.596
Target Compounds						
3) L1 AR-1016-1	4.793	4.780	8829835	4277819	28.641	27.392
4) L1 AR-1016-2	4.793	4.780	8829835	4277819	20.972	19.765
5) L1 AR-1016-3	4.863	4.975	2759803	1299739	9.329	10.881
6) L1 AR-1016-4	4.989	5.014	2409986	69287467	10.398	665.774 #
7) L1 AR-1016-5	5.244	5.227	79195600	46107513	306.686	338.395
8) L2 AR-1221-1	3.918	3.912	2193648	1053285	16.634	15.376
9) L2 AR-1221-2	3.981	3.975	98577134	70650809	998.745	1376.141 #
10) L2 AR-1221-3	4.071	4.065	6712305	1524510	24.875	10.483 #
11) L3 AR-1232-1	4.071	4.065	6712305	1524510	32.127	13.677 #
12) L3 AR-1232-2	4.572	4.780	276171	4277819	2.379	41.405 #
13) L3 AR-1232-3	4.793	4.975	8829835	1299739	43.726	22.894 #
14) L3 AR-1232-4	4.989	5.055	2409986	34449511	21.669	627.558 #
15) L3 AR-1232-5	5.029	5.227	122.9E6	46107513	1504.429	784.076 #
16) L4 AR-1242-1	4.793	4.780	8829835	4277819	33.732	32.323
17) L4 AR-1242-2	4.793	4.780	8829835	4277819	24.800	23.567
18) L4 AR-1242-3	4.863	4.975	2759803	1299739	10.979	13.014
19) L4 AR-1242-4	4.989	5.055	2409986	34449511	12.268	322.204 #
20) L4 AR-1242-5	5.641	5.580	104.5E6	378.8E6	487.548	3013.389 #
21) L5 AR-1248-1	4.793	4.780	8829835	4277819	44.258	42.554
22) L5 AR-1248-2	5.029	5.014	122.9E6	69287467	441.498	476.269
23) L5 AR-1248-3	5.244	5.055	79195600	34449511	226.679	222.243
24) L5 AR-1248-4	5.599	5.227	684.1E6	46107513	1433.875	255.024 #
25) L5 AR-1248-5	5.641	5.620	104.5E6	57605154	305.156	334.516
26) L6 AR-1254-1	5.599	5.580	684.1E6	378.8E6	1326.775	1448.352
27) L6 AR-1254-2	5.749	5.727	1026.1E6	564.8E6	2278.323	2407.907
28) L6 AR-1254-3	6.154	6.130	2245.9E6	1215.8E6	3136.951	3408.504
29) L6 AR-1254-4	6.384	6.357	1517.2E6	795.8E6	3622.789	4120.660
30) L6 AR-1254-5	6.804	6.775	4412.3E6	2347.6E6	7072.034	7911.377
31) L7 AR-1260-1	6.286	6.261	1126.2E6	602.3E6	2416.076	2542.235
32) L7 AR-1260-2	6.475	6.449	1191.9E6	622.4E6	2109.154	2261.872
33) L7 AR-1260-3	6.874	6.601	189.7E6	562.1E6	398.736	2203.847 #
34) L7 AR-1260-4	7.103	7.073	333.4E6	166.5E6	772.418	807.650
35) L7 AR-1260-5	7.345	7.313	366.7E6	185.0E6	369.007	413.204
36) L8 AR-1262-1	6.874	6.846	189.7E6	172.0E6	284.847	542.279 #
37) L8 AR-1262-2	7.345	7.313	366.7E6	185.0E6	324.637	371.076
38) L8 AR-1262-3	7.632	7.598	758.4E6	380.8E6	1691.968	1940.108
39) L8 AR-1262-4	7.695	7.661	929.0E6	443.6E6	1120.395	1250.017
40) L8 AR-1262-5	8.192	8.155	218.9E6	98452008	586.275	687.814
41) L9 AR-1268-1	7.632	7.598	758.4E6	380.8E6	572.751	666.342

Data Path : Z:\pestpcbsrv\HPCHEM1\ECD_0\Data\P0022825\
 Data File : P0109593.D
 Signal(s) : Signal #1: ECD1A.ch Signal #2: ECD2B.ch
 Acq On : 28 Feb 2025 15:41
 Operator : YP/AJ
 Sample : Q1433-05DL 3X
 Misc :
 ALS Vial : 19 Sample Multiplier: 1

Instrument :
 ECD_0
 ClientSampleId :
 K084-2BDL

Integration File signal 1: autoint1.e
 Integration File signal 2: autoint2.e
 Quant Time: Mar 01 00:25:13 2025
 Quant Method : Z:\pestpcbsrv\HPCHEM1\ECD_0\methods\P0022025.M
 Quant Title : GC EXTRACTABLES
 QLast Update : Fri Feb 21 04:40:23 2025
 Response via : Initial Calibration
 Integrator: ChemStation

Volume Inj. : 2 µl
 Signal #1 Phase : ZB-MR1 Signal #2 Phase: ZB-MR2
 Signal #1 Info : 30Mx0.32mmx 0.50µ Signal #2 Info : 30M x 0.32mm x 0.25µm

	Compound	RT#1	RT#2	Resp#1	Resp#2	ng/ml	ng/ml
42)	L9 AR-1268-2	7.695	7.661	929.0E6	443.6E6	768.370	845.076
43)	L9 AR-1268-3	7.905	7.870	717.1E6	334.1E6	704.252	780.411
44)	L9 AR-1268-4	8.192	8.155	218.9E6	98452008	515.168	610.233
45)	L9 AR-1268-5	8.491	8.449	2187.6E6	877.2E6	724.453	802.498

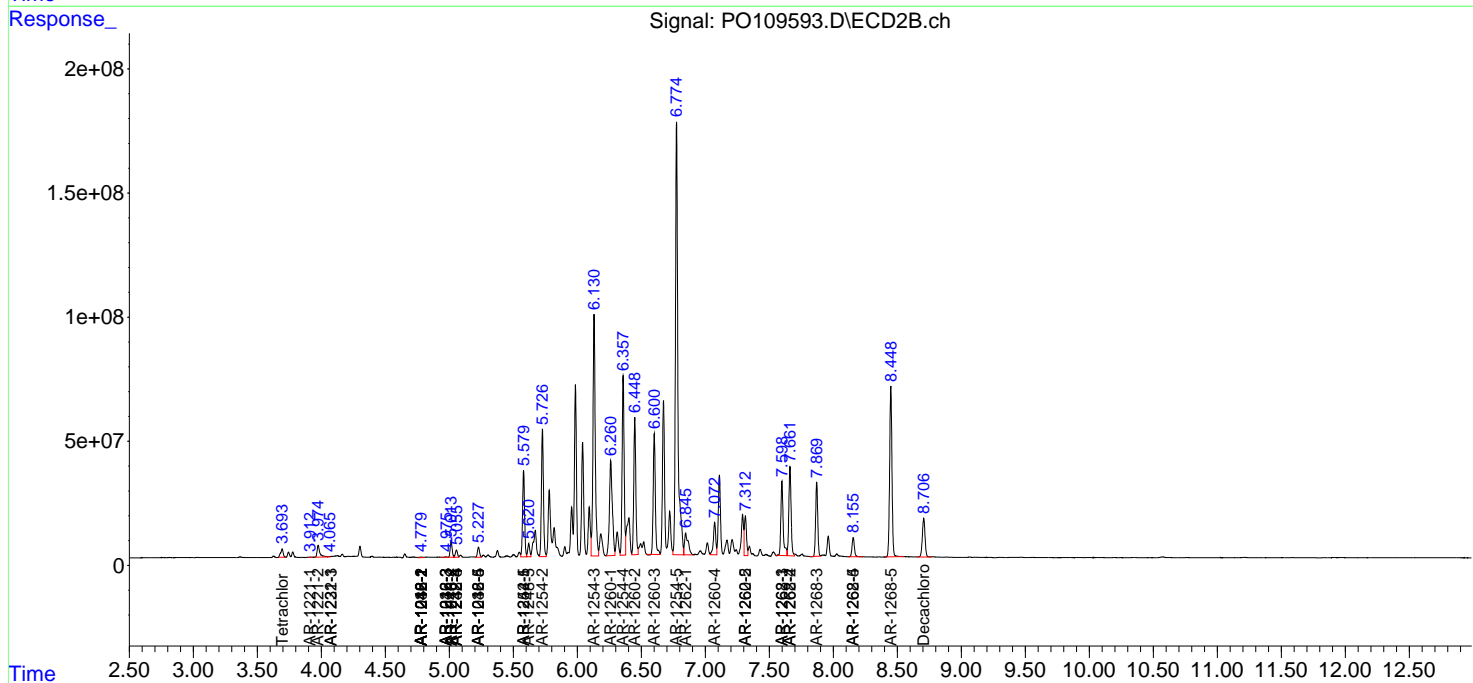
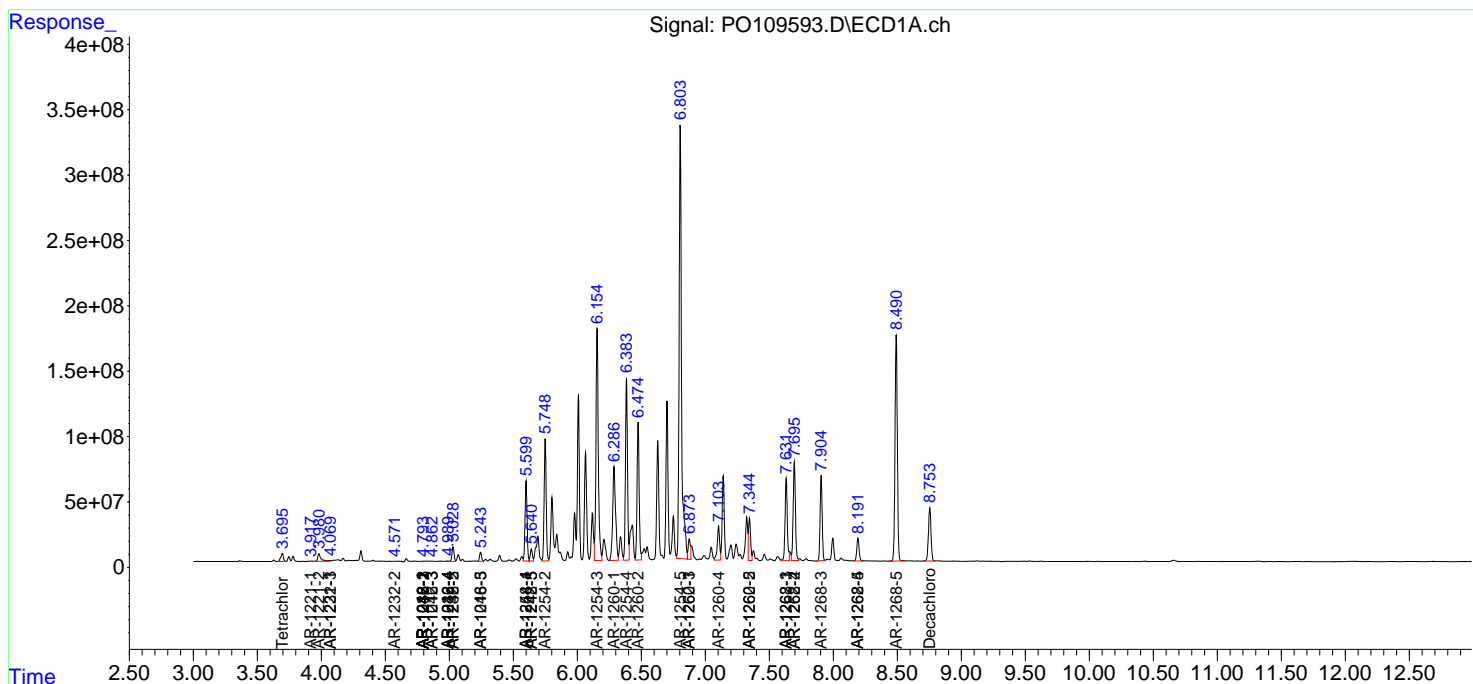
(f)=RT Delta > 1/2 Window (#)=Amounts differ by > 25% (m)=manual int.

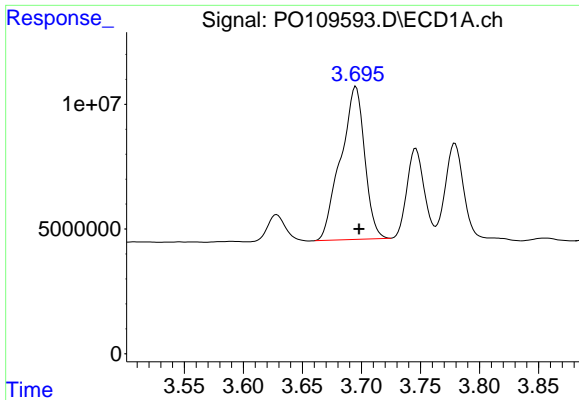
Data Path : Z:\pestpcbsrv\HPCHEM1\ECD_O\Data\PO022825\
 Data File : PO109593.D
 Signal(s) : Signal #1: ECD1A.ch Signal #2: ECD2B.ch
 Acq On : 28 Feb 2025 15:41
 Operator : YP/AJ
 Sample : Q1433-05DL 3X
 Misc :
 ALS Vial : 19 Sample Multiplier: 1

Instrument :
 ECD_O
 ClientSampleId :
 K084-2BDL

Integration File signal 1: autoint1.e
 Integration File signal 2: autoint2.e
 Quant Time: Mar 01 00:25:13 2025
 Quant Method : Z:\pestpcbsrv\HPCHEM1\ECD_O\methods\PO022025.M
 Quant Title : GC EXTRACTABLES
 QLast Update : Fri Feb 21 04:40:23 2025
 Response via : Initial Calibration
 Integrator: ChemStation

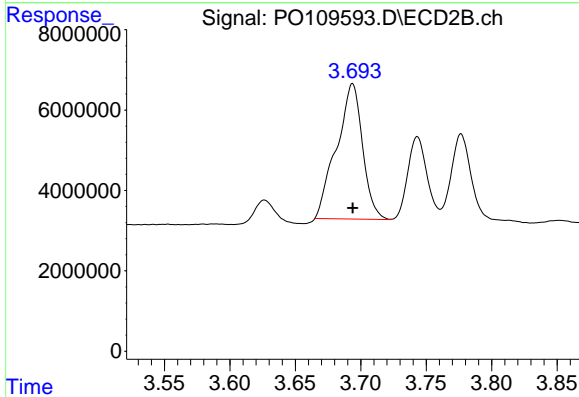
Volume Inj. : 2 µl
 Signal #1 Phase : ZB-MR1 Signal #2 Phase: ZB-MR2
 Signal #1 Info : 30Mx0.32mmx 0.50µ Signal #2 Info : 30M x 0.32mm x 0.25µm



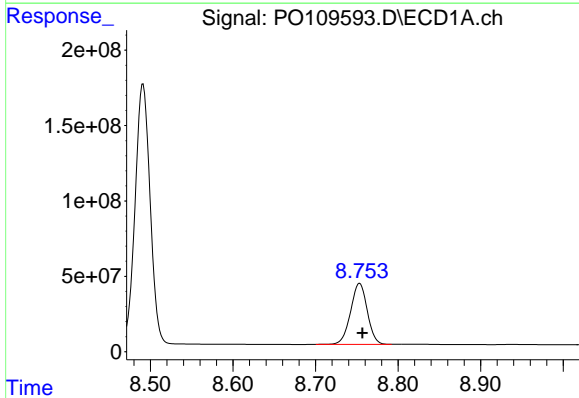


#1 Tetrachloro-m-xylene
 R.T.: 3.695 min
 Delta R.T.: -0.003 min
 Response: 86369133
 Conc: 9.12 ng/ml

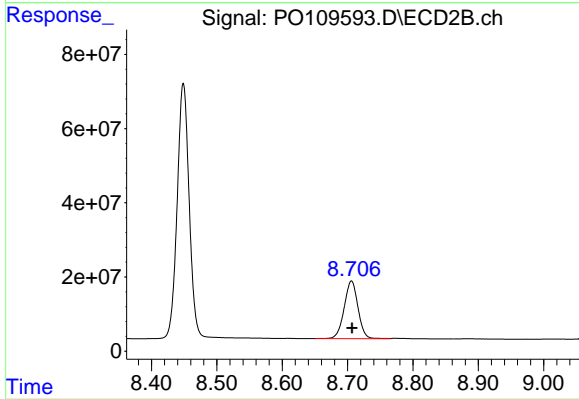
Instrument :
 ECD_O
 ClientSampleId :
 K084-2BDL



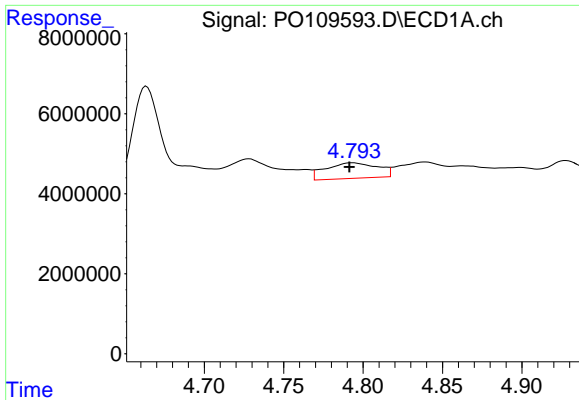
#1 Tetrachloro-m-xylene
 R.T.: 3.694 min
 Delta R.T.: 0.000 min
 Response: 46497527
 Conc: 8.88 ng/ml



#2 Decachlorobiphenyl
 R.T.: 8.754 min
 Delta R.T.: -0.003 min
 Response: 569557275
 Conc: 66.21 ng/ml



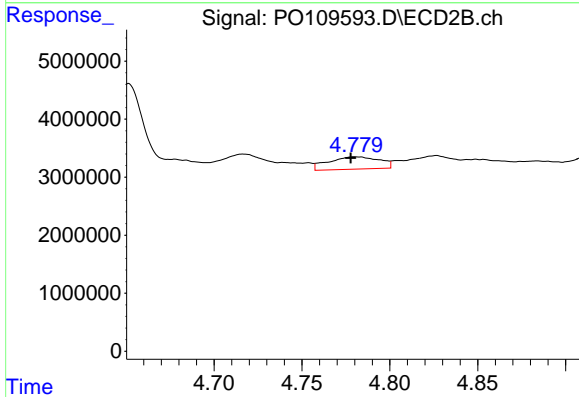
#2 Decachlorobiphenyl
 R.T.: 8.706 min
 Delta R.T.: 0.000 min
 Response: 227981619
 Conc: 71.60 ng/ml



#3 AR-1016-1

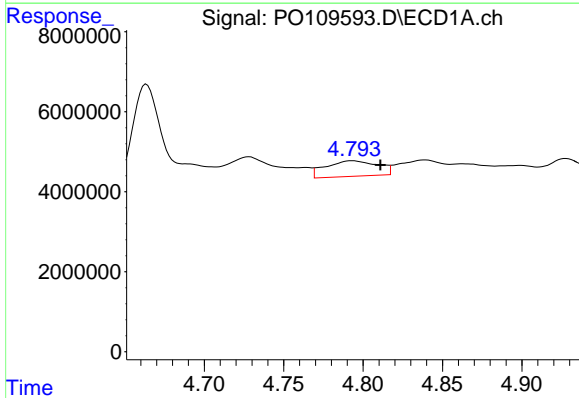
R.T.: 4.793 min
 Delta R.T.: 0.002 min
 Response: 8829835
 Conc: 28.64 ng/ml

Instrument :
 ECD_O
 ClientSampleId :
 K084-2BDL



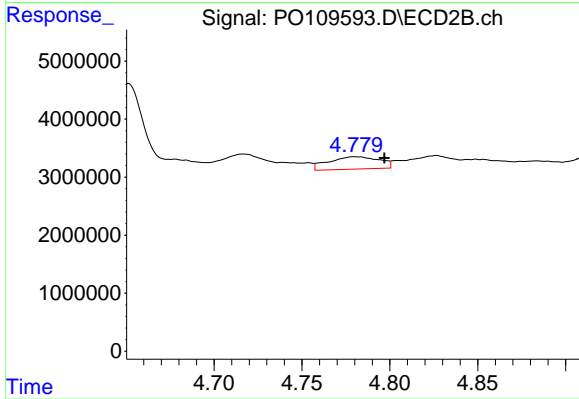
#3 AR-1016-1

R.T.: 4.780 min
 Delta R.T.: 0.002 min
 Response: 4277819
 Conc: 27.39 ng/ml



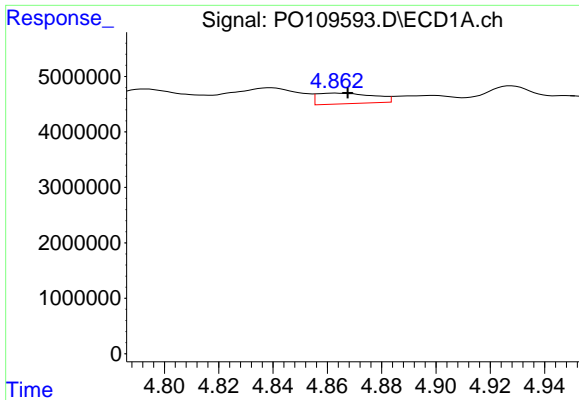
#4 AR-1016-2

R.T.: 4.793 min
 Delta R.T.: -0.018 min
 Response: 8829835
 Conc: 20.97 ng/ml



#4 AR-1016-2

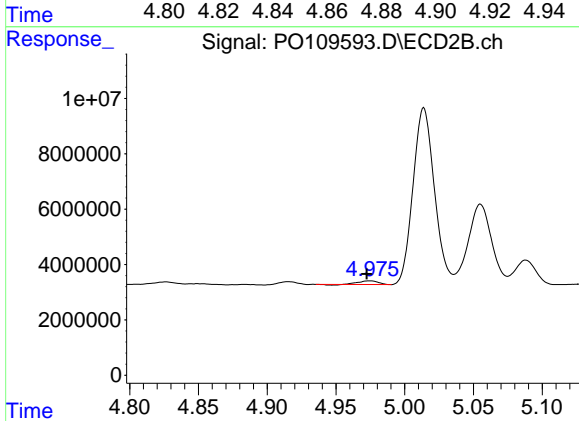
R.T.: 4.780 min
 Delta R.T.: -0.017 min
 Response: 4277819
 Conc: 19.77 ng/ml



#5 AR-1016-3

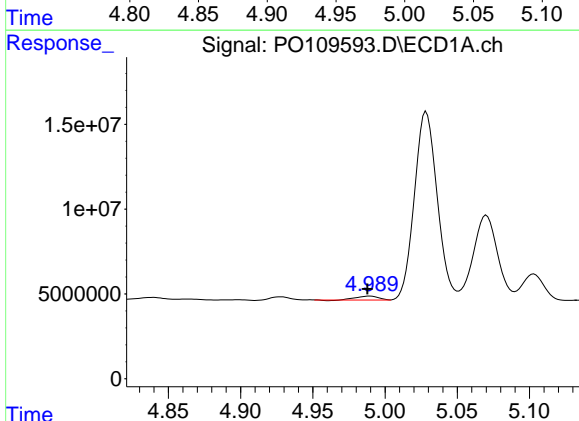
R.T.: 4.863 min
 Delta R.T.: -0.004 min
 Response: 2759803
 Conc: 9.33 ng/ml

Instrument :
 ECD_O
 ClientSampleId :
 K084-2BDL



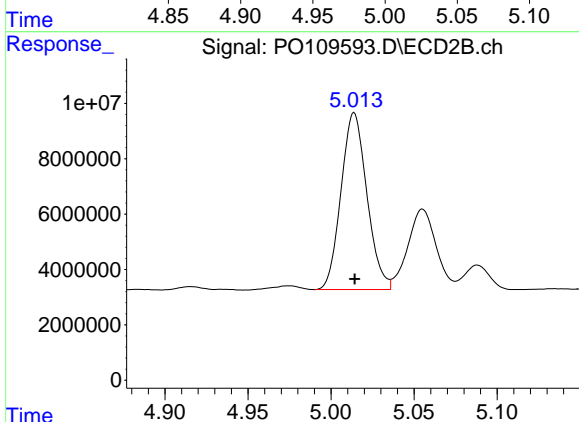
#5 AR-1016-3

R.T.: 4.975 min
 Delta R.T.: 0.003 min
 Response: 1299739
 Conc: 10.88 ng/ml



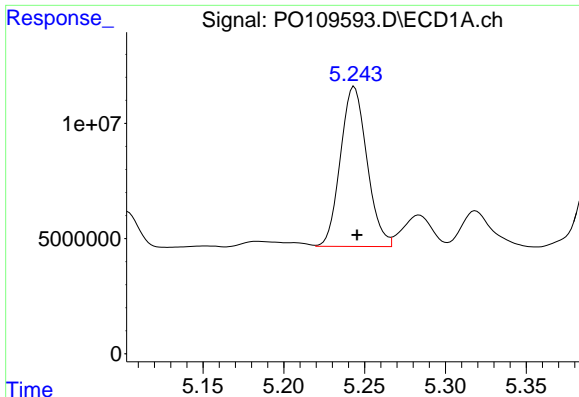
#6 AR-1016-4

R.T.: 4.989 min
 Delta R.T.: 0.002 min
 Response: 2409986
 Conc: 10.40 ng/ml



#6 AR-1016-4

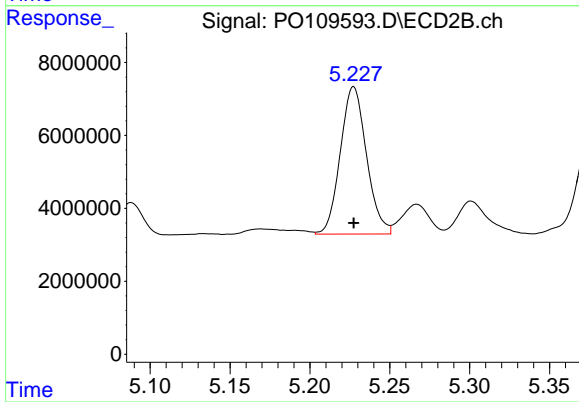
R.T.: 5.014 min
 Delta R.T.: 0.000 min
 Response: 69287467
 Conc: 665.77 ng/ml



#7 AR-1016-5

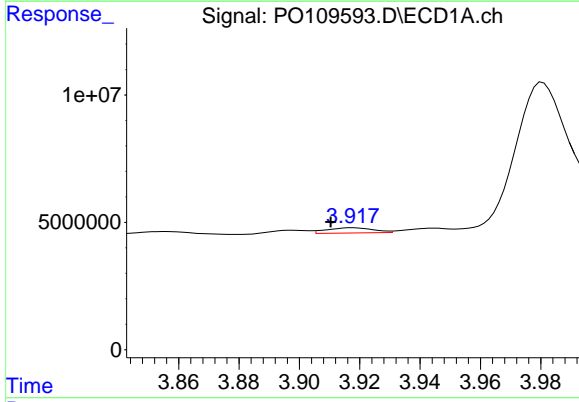
R.T.: 5.244 min
 Delta R.T.: -0.002 min
 Response: 79195600
 Conc: 306.69 ng/ml

Instrument :
 ECD_O
 ClientSampleId :
 K084-2BDL



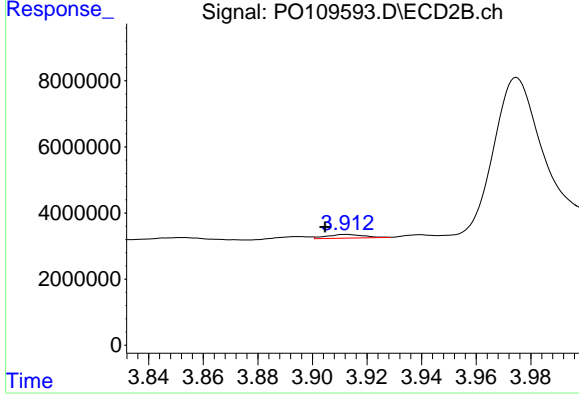
#7 AR-1016-5

R.T.: 5.227 min
 Delta R.T.: 0.000 min
 Response: 46107513
 Conc: 338.40 ng/ml



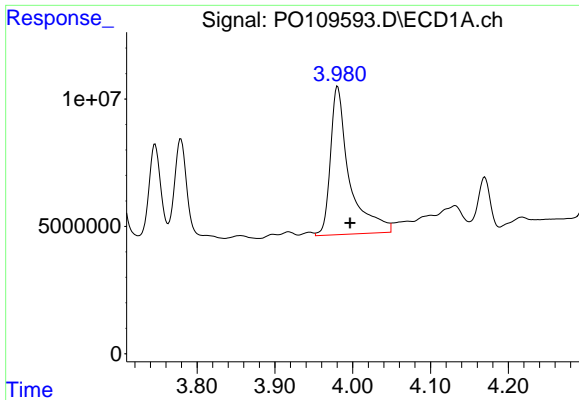
#8 AR-1221-1

R.T.: 3.918 min
 Delta R.T.: 0.007 min
 Response: 2193648
 Conc: 16.63 ng/ml



#8 AR-1221-1

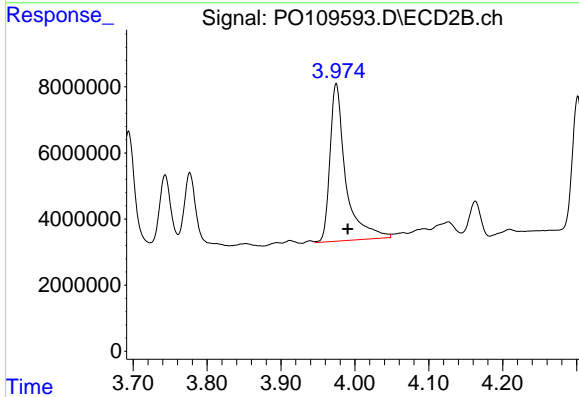
R.T.: 3.912 min
 Delta R.T.: 0.008 min
 Response: 1053285
 Conc: 15.38 ng/ml



#9 AR-1221-2

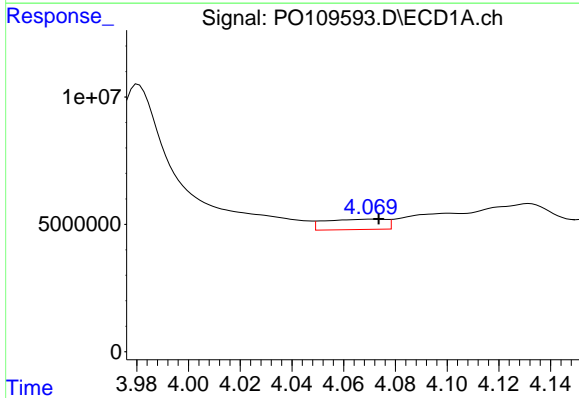
R.T.: 3.981 min
 Delta R.T.: -0.016 min
 Response: 98577134
 Conc: 998.75 ng/ml

Instrument :
 ECD_O
 ClientSampleId :
 K084-2BDL



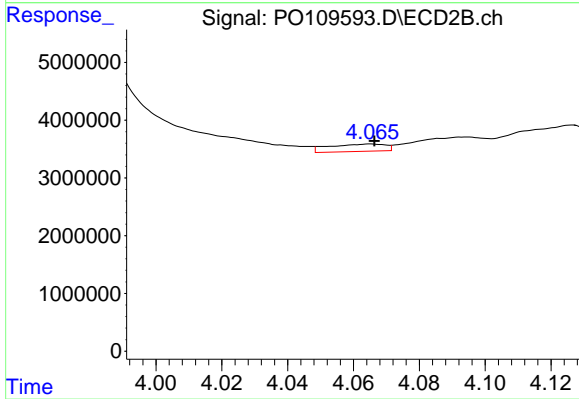
#9 AR-1221-2

R.T.: 3.975 min
 Delta R.T.: -0.015 min
 Response: 70650809
 Conc: 1376.14 ng/ml



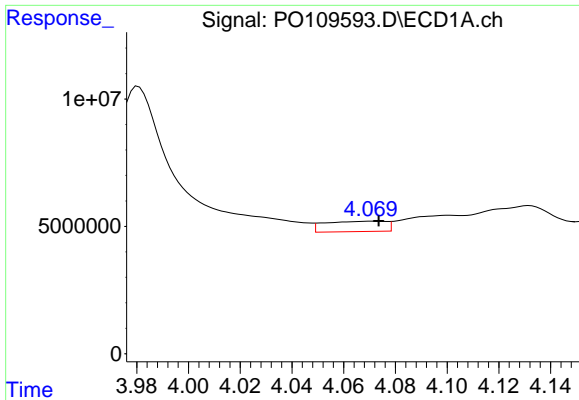
#10 AR-1221-3

R.T.: 4.071 min
 Delta R.T.: -0.003 min
 Response: 6712305
 Conc: 24.88 ng/ml



#10 AR-1221-3

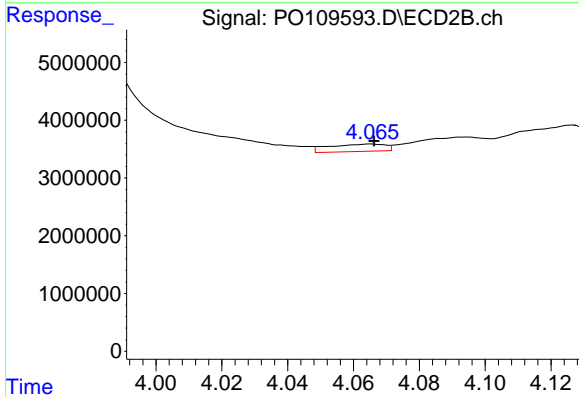
R.T.: 4.065 min
 Delta R.T.: -0.001 min
 Response: 1524510
 Conc: 10.48 ng/ml



#11 AR-1232-1

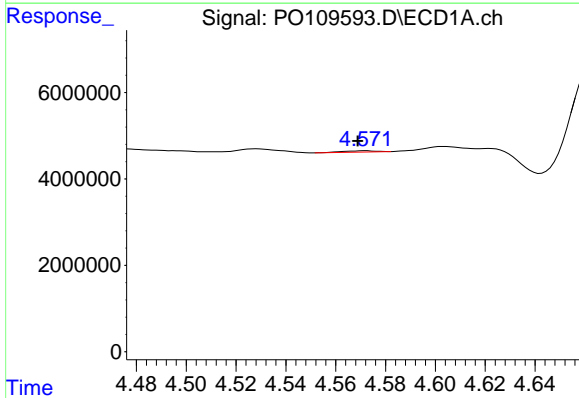
R.T.: 4.071 min
 Delta R.T.: -0.003 min
 Response: 6712305
 Conc: 32.13 ng/ml

Instrument :
 ECD_O
 ClientSampleId :
 K084-2BDL



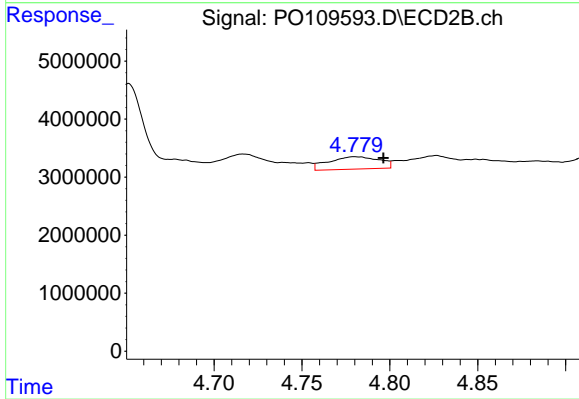
#11 AR-1232-1

R.T.: 4.065 min
 Delta R.T.: 0.000 min
 Response: 1524510
 Conc: 13.68 ng/ml



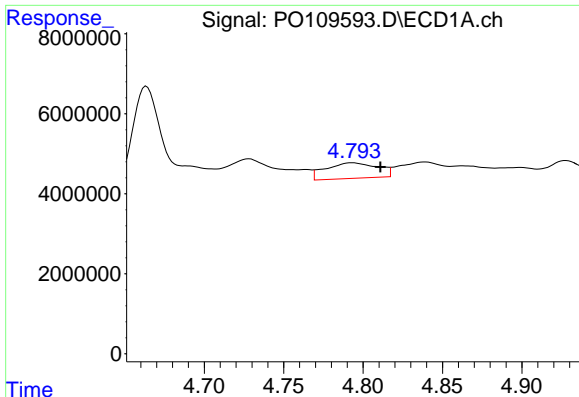
#12 AR-1232-2

R.T.: 4.572 min
 Delta R.T.: 0.003 min
 Response: 276171
 Conc: 2.38 ng/ml



#12 AR-1232-2

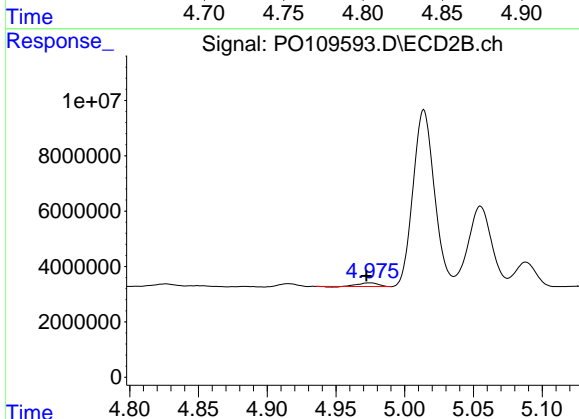
R.T.: 4.780 min
 Delta R.T.: -0.016 min
 Response: 4277819
 Conc: 41.40 ng/ml



#13 AR-1232-3

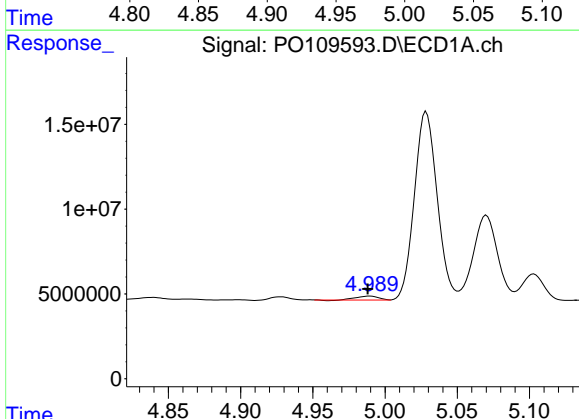
R.T.: 4.793 min
 Delta R.T.: -0.018 min
 Response: 8829835
 Conc: 43.73 ng/ml

Instrument :
 ECD_O
 ClientSampleId :
 K084-2BDL



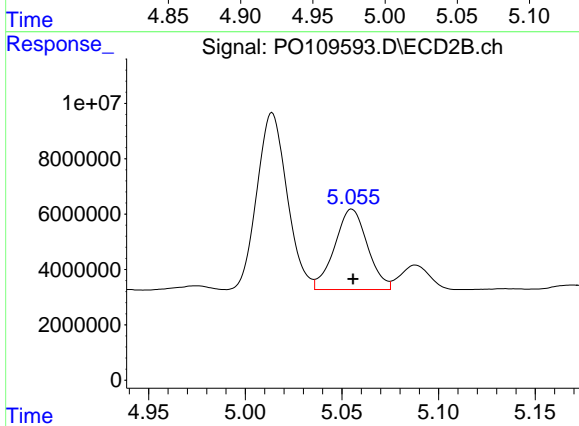
#13 AR-1232-3

R.T.: 4.975 min
 Delta R.T.: 0.003 min
 Response: 1299739
 Conc: 22.89 ng/ml



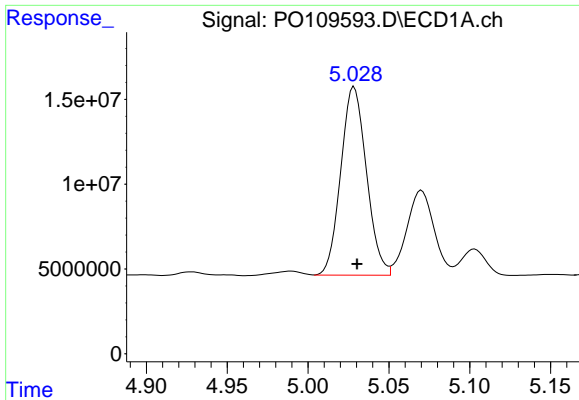
#14 AR-1232-4

R.T.: 4.989 min
 Delta R.T.: 0.001 min
 Response: 2409986
 Conc: 21.67 ng/ml



#14 AR-1232-4

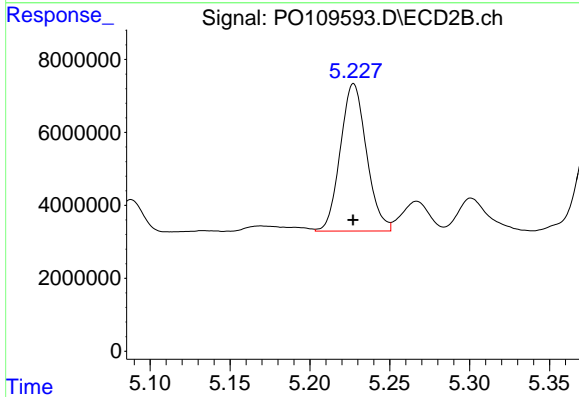
R.T.: 5.055 min
 Delta R.T.: 0.000 min
 Response: 34449511
 Conc: 627.56 ng/ml



#15 AR-1232-5

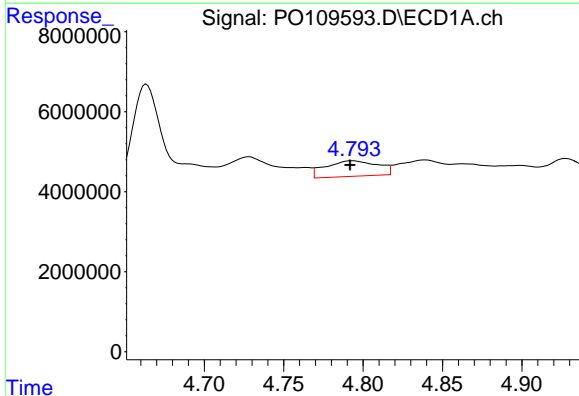
R.T.: 5.029 min
 Delta R.T.: -0.002 min
 Response: 122864690
 Conc: 1504.43 ng/ml

Instrument :
 ECD_O
 ClientSampleId :
 K084-2BDL



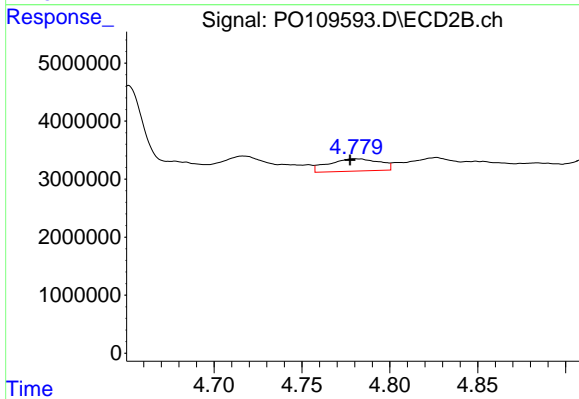
#15 AR-1232-5

R.T.: 5.227 min
 Delta R.T.: 0.000 min
 Response: 46107513
 Conc: 784.08 ng/ml



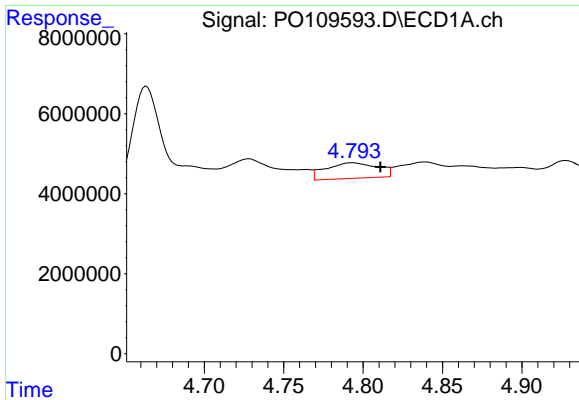
#16 AR-1242-1

R.T.: 4.793 min
 Delta R.T.: 0.001 min
 Response: 8829835
 Conc: 33.73 ng/ml



#16 AR-1242-1

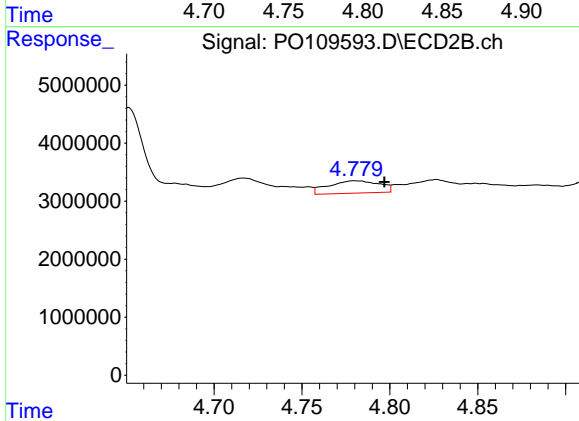
R.T.: 4.780 min
 Delta R.T.: 0.003 min
 Response: 4277819
 Conc: 32.32 ng/ml



#17 AR-1242-2

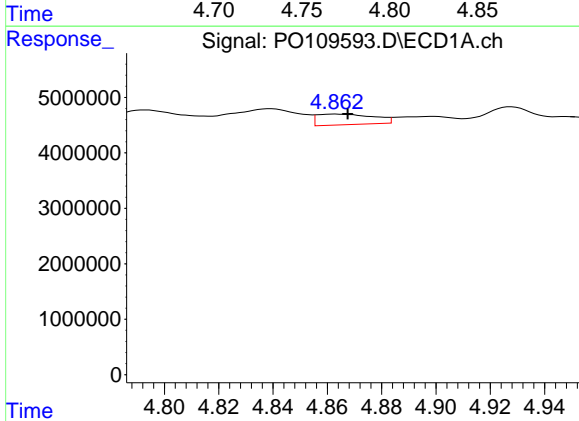
R.T.: 4.793 min
 Delta R.T.: -0.018 min
 Response: 8829835
 Conc: 24.80 ng/ml

Instrument :
 ECD_O
 ClientSampleId :
 K084-2BDL



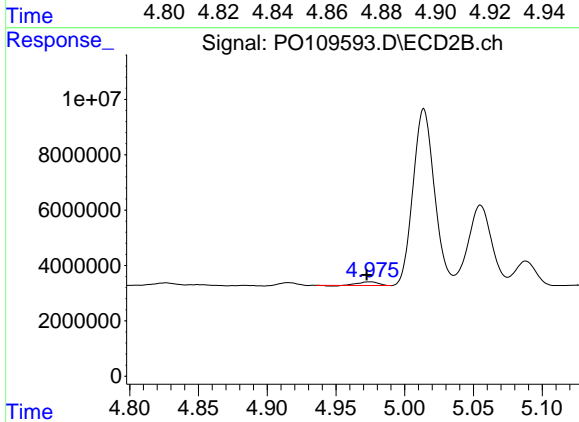
#17 AR-1242-2

R.T.: 4.780 min
 Delta R.T.: -0.017 min
 Response: 4277819
 Conc: 23.57 ng/ml



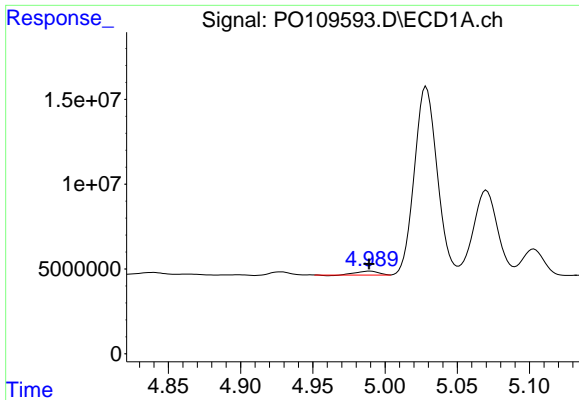
#18 AR-1242-3

R.T.: 4.863 min
 Delta R.T.: -0.005 min
 Response: 2759803
 Conc: 10.98 ng/ml



#18 AR-1242-3

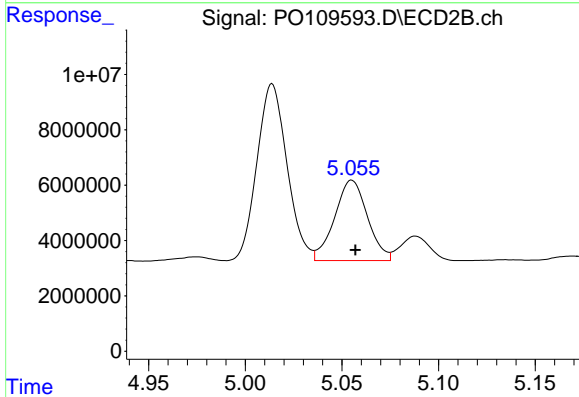
R.T.: 4.975 min
 Delta R.T.: 0.003 min
 Response: 1299739
 Conc: 13.01 ng/ml



#19 AR-1242-4

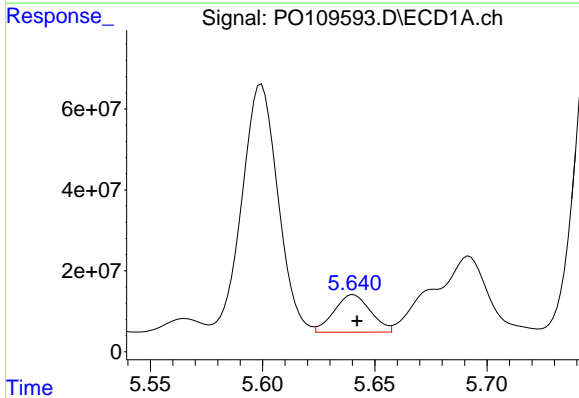
R.T.: 4.989 min
 Delta R.T.: 0.000 min
 Response: 2409986
 Conc: 12.27 ng/ml

Instrument :
 ECD_O
 ClientSampleId :
 K084-2BDL



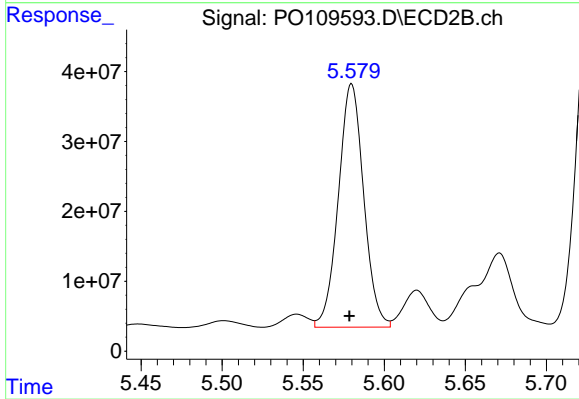
#19 AR-1242-4

R.T.: 5.055 min
 Delta R.T.: -0.002 min
 Response: 34449511
 Conc: 322.20 ng/ml



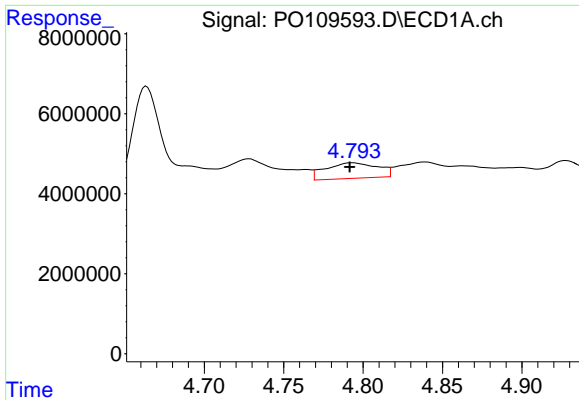
#20 AR-1242-5

R.T.: 5.641 min
 Delta R.T.: -0.002 min
 Response: 104518774
 Conc: 487.55 ng/ml



#20 AR-1242-5

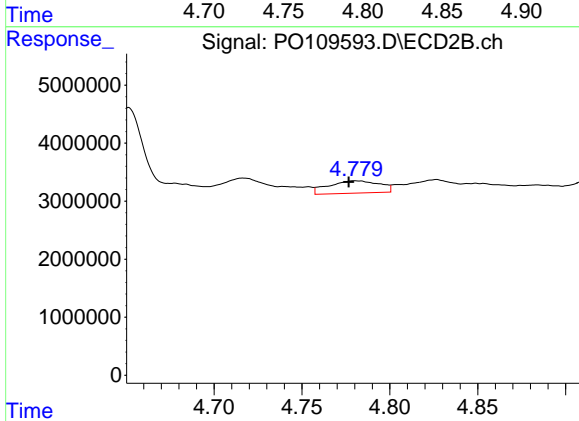
R.T.: 5.580 min
 Delta R.T.: 0.001 min
 Response: 378799453
 Conc: 3013.39 ng/ml



#21 AR-1248-1

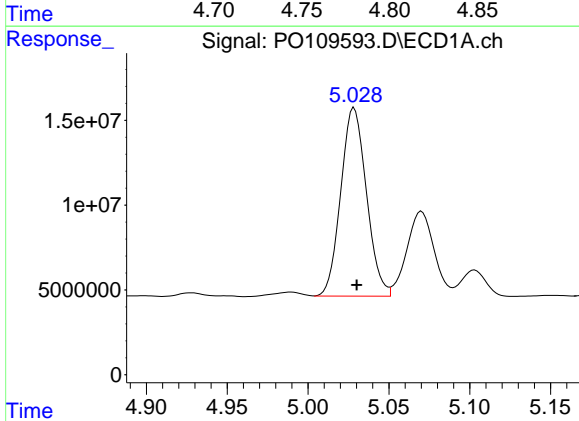
R.T.: 4.793 min
 Delta R.T.: 0.002 min
 Response: 8829835
 Conc: 44.26 ng/ml

Instrument :
 ECD_O
 ClientSampleId :
 K084-2BDL



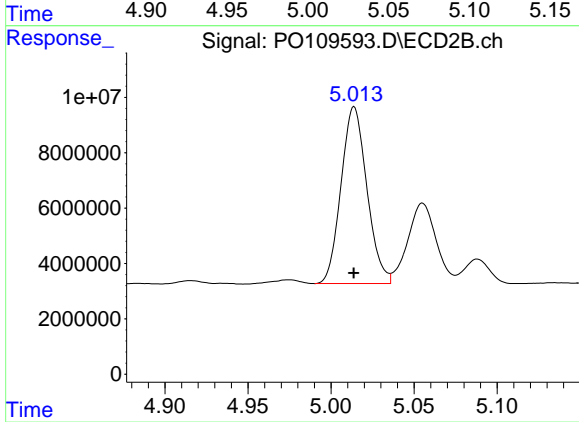
#21 AR-1248-1

R.T.: 4.780 min
 Delta R.T.: 0.003 min
 Response: 4277819
 Conc: 42.55 ng/ml



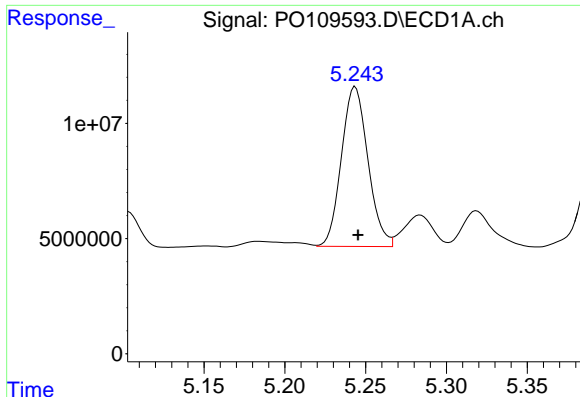
#22 AR-1248-2

R.T.: 5.029 min
 Delta R.T.: -0.002 min
 Response: 122864690
 Conc: 441.50 ng/ml



#22 AR-1248-2

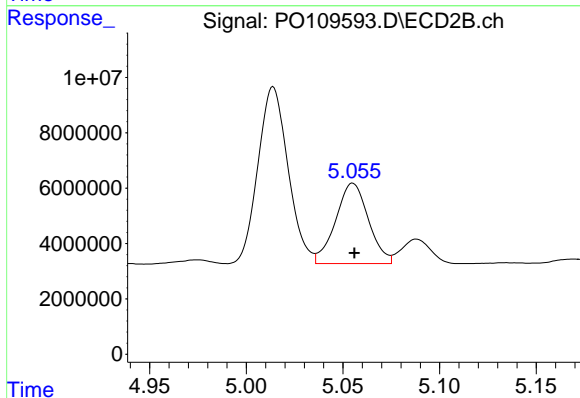
R.T.: 5.014 min
 Delta R.T.: 0.000 min
 Response: 69287467
 Conc: 476.27 ng/ml



#23 AR-1248-3

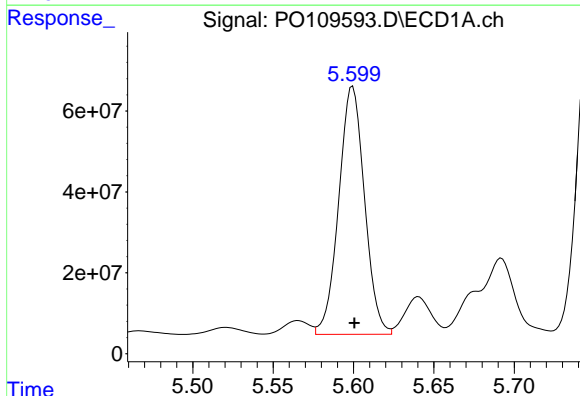
R.T.: 5.244 min
 Delta R.T.: -0.002 min
 Response: 79195600
 Conc: 226.68 ng/ml

Instrument :
 ECD_O
 ClientSampleId :
 K084-2BDL



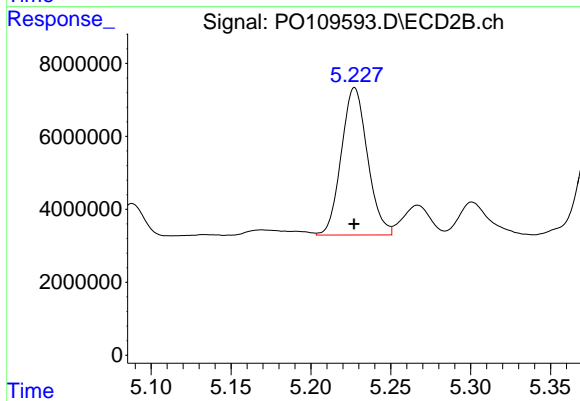
#23 AR-1248-3

R.T.: 5.055 min
 Delta R.T.: 0.000 min
 Response: 34449511
 Conc: 222.24 ng/ml



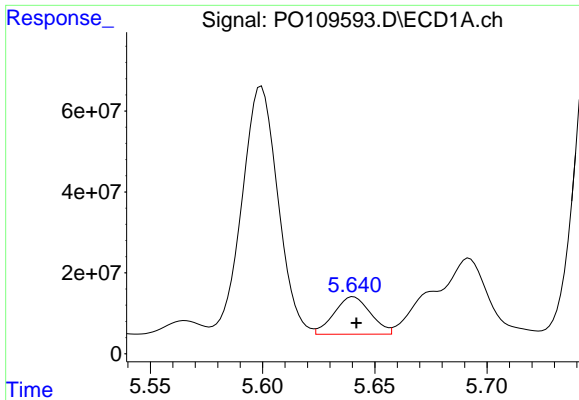
#24 AR-1248-4

R.T.: 5.599 min
 Delta R.T.: -0.001 min
 Response: 684094156
 Conc: 1433.87 ng/ml



#24 AR-1248-4

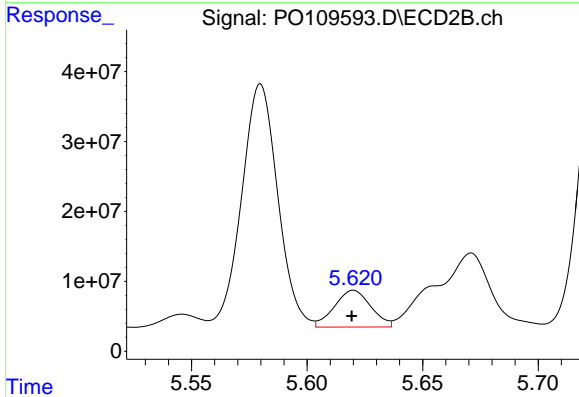
R.T.: 5.227 min
 Delta R.T.: 0.000 min
 Response: 46107513
 Conc: 255.02 ng/ml



#25 AR-1248-5

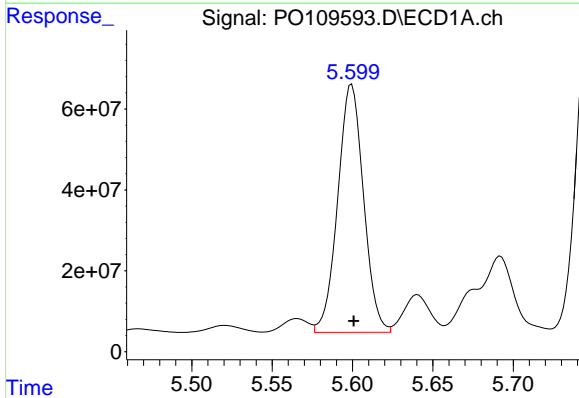
R.T.: 5.641 min
 Delta R.T.: -0.001 min
 Response: 104518774
 Conc: 305.16 ng/ml

Instrument :
 ECD_O
 ClientSampleId :
 K084-2BDL



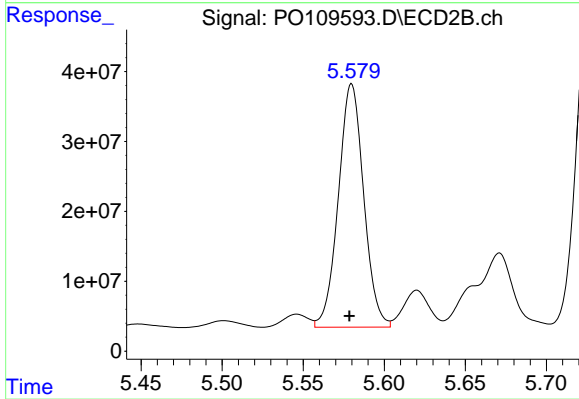
#25 AR-1248-5

R.T.: 5.620 min
 Delta R.T.: 0.000 min
 Response: 57605154
 Conc: 334.52 ng/ml



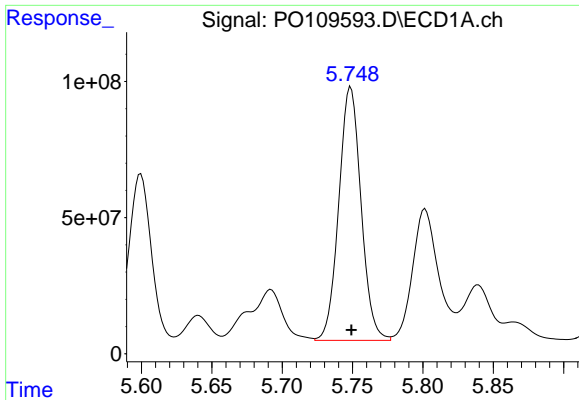
#26 AR-1254-1

R.T.: 5.599 min
 Delta R.T.: -0.001 min
 Response: 684094156
 Conc: 1326.78 ng/ml



#26 AR-1254-1

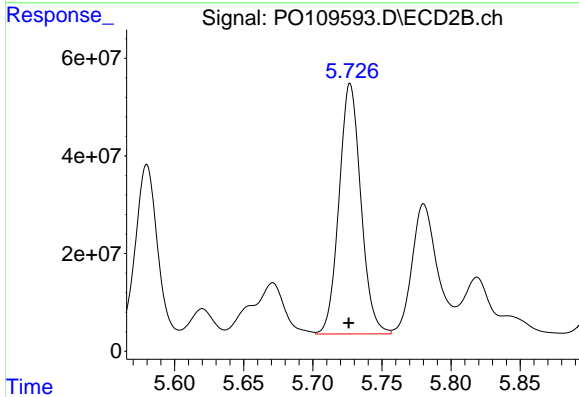
R.T.: 5.580 min
 Delta R.T.: 0.001 min
 Response: 378799453
 Conc: 1448.35 ng/ml



#27 AR-1254-2

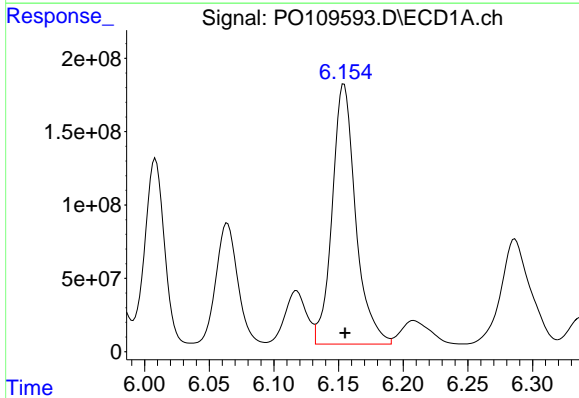
R.T.: 5.749 min
 Delta R.T.: 0.000 min
 Response: 1026098729
 Conc: 2278.32 ng/ml

Instrument :
 ECD_O
 ClientSampleId :
 K084-2BDL



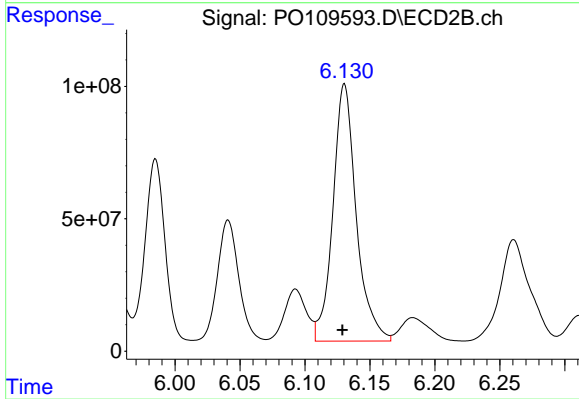
#27 AR-1254-2

R.T.: 5.727 min
 Delta R.T.: 0.001 min
 Response: 564802259
 Conc: 2407.91 ng/ml



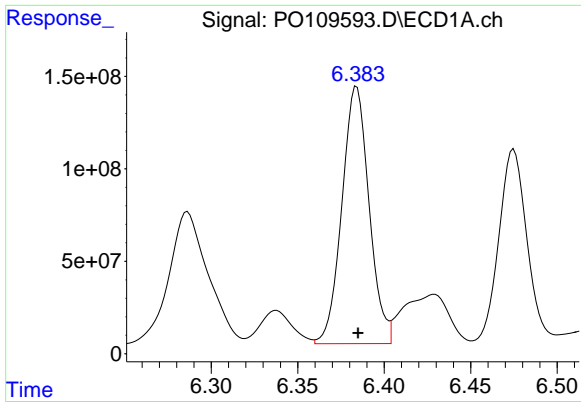
#28 AR-1254-3

R.T.: 6.154 min
 Delta R.T.: 0.000 min
 Response: 2245916806
 Conc: 3136.95 ng/ml



#28 AR-1254-3

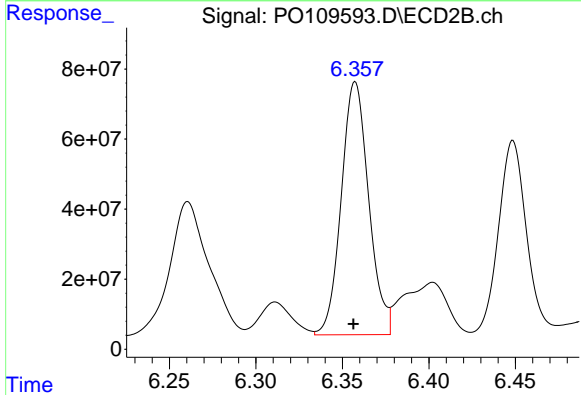
R.T.: 6.130 min
 Delta R.T.: 0.001 min
 Response: 1215828898
 Conc: 3408.50 ng/ml



#29 AR-1254-4

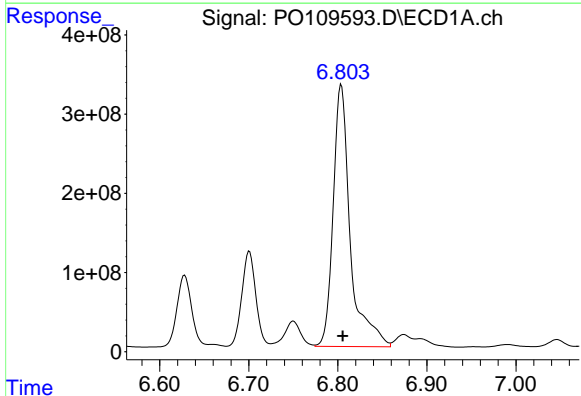
R.T.: 6.384 min
 Delta R.T.: 0.000 min
 Response: 1517193063
 Conc: 3622.79 ng/ml

Instrument :
 ECD_O
 ClientSampleId :
 K084-2BDL



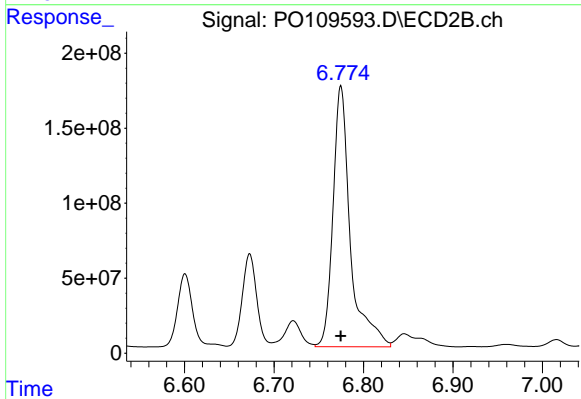
#29 AR-1254-4

R.T.: 6.357 min
 Delta R.T.: 0.000 min
 Response: 795795874
 Conc: 4120.66 ng/ml



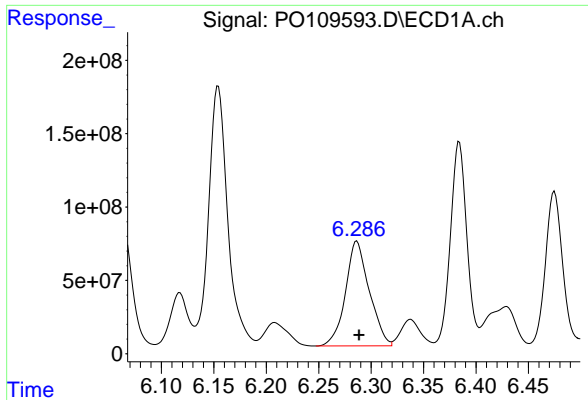
#30 AR-1254-5

R.T.: 6.804 min
 Delta R.T.: -0.002 min
 Response: 4412262689
 Conc: 7072.03 ng/ml



#30 AR-1254-5

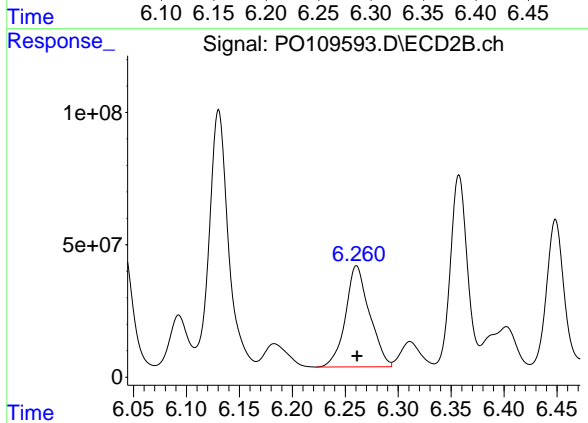
R.T.: 6.775 min
 Delta R.T.: 0.000 min
 Response: 2347560606
 Conc: 7911.38 ng/ml



#31 AR-1260-1

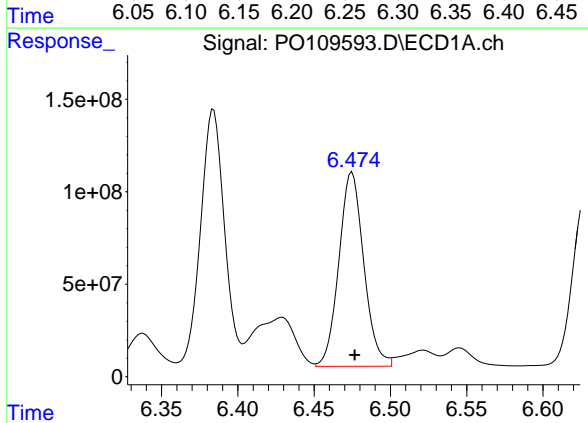
R.T.: 6.286 min
 Delta R.T.: -0.002 min
 Response: 1126208662
 Conc: 2416.08 ng/ml

Instrument :
 ECD_O
 ClientSampleId :
 K084-2BDL



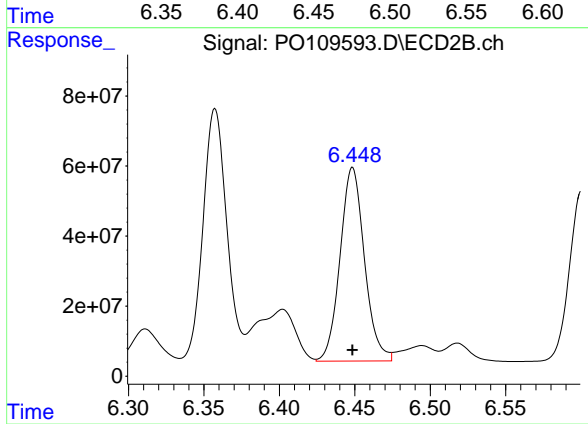
#31 AR-1260-1

R.T.: 6.261 min
 Delta R.T.: 0.000 min
 Response: 602305341
 Conc: 2542.23 ng/ml



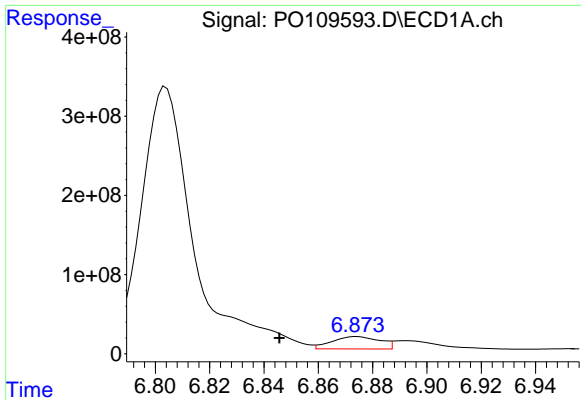
#32 AR-1260-2

R.T.: 6.475 min
 Delta R.T.: -0.002 min
 Response: 1191921898
 Conc: 2109.15 ng/ml



#32 AR-1260-2

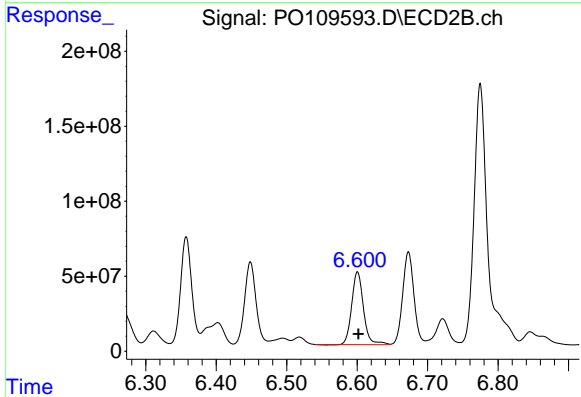
R.T.: 6.449 min
 Delta R.T.: 0.000 min
 Response: 622401992
 Conc: 2261.87 ng/ml



#33 AR-1260-3

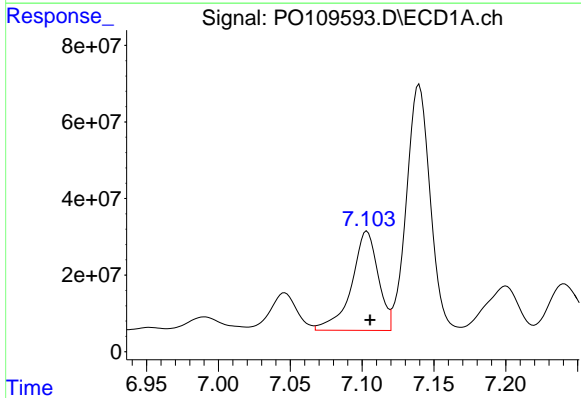
R.T.: 6.874 min
 Delta R.T.: 0.028 min
 Response: 189663221
 Conc: 398.74 ng/ml

Instrument :
 ECD_O
 ClientSampleId :
 K084-2BDL



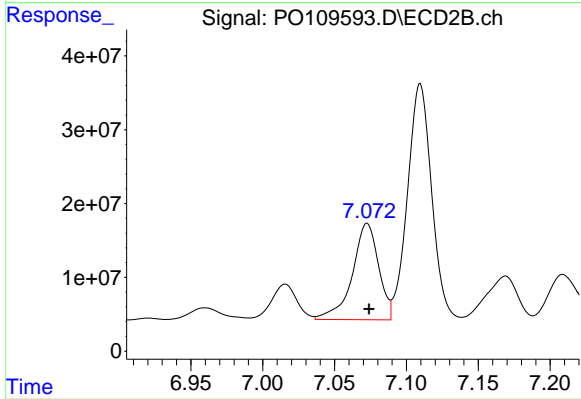
#33 AR-1260-3

R.T.: 6.601 min
 Delta R.T.: -0.001 min
 Response: 562135662
 Conc: 2203.85 ng/ml



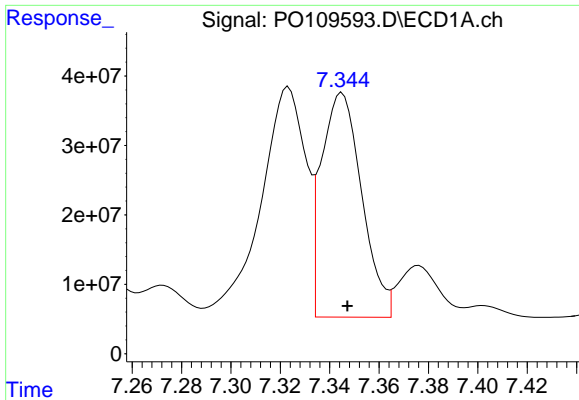
#34 AR-1260-4

R.T.: 7.103 min
 Delta R.T.: -0.002 min
 Response: 333376421
 Conc: 772.42 ng/ml



#34 AR-1260-4

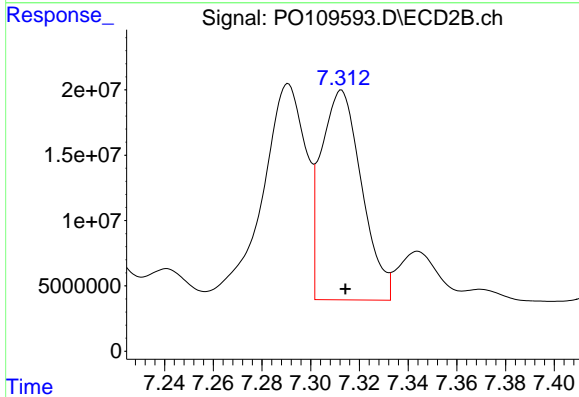
R.T.: 7.073 min
 Delta R.T.: -0.001 min
 Response: 166531180
 Conc: 807.65 ng/ml



#35 AR-1260-5

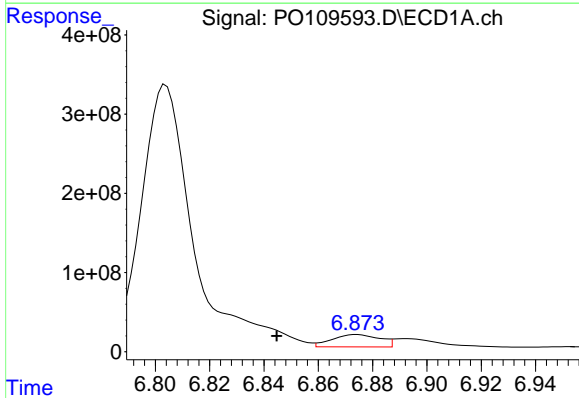
R.T.: 7.345 min
 Delta R.T.: -0.002 min
 Response: 366749562
 Conc: 369.01 ng/ml

Instrument :
 ECD_O
 ClientSampleId :
 K084-2BDL



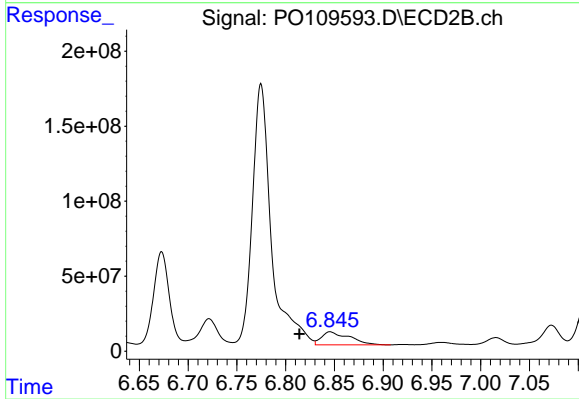
#35 AR-1260-5

R.T.: 7.313 min
 Delta R.T.: -0.002 min
 Response: 185025844
 Conc: 413.20 ng/ml



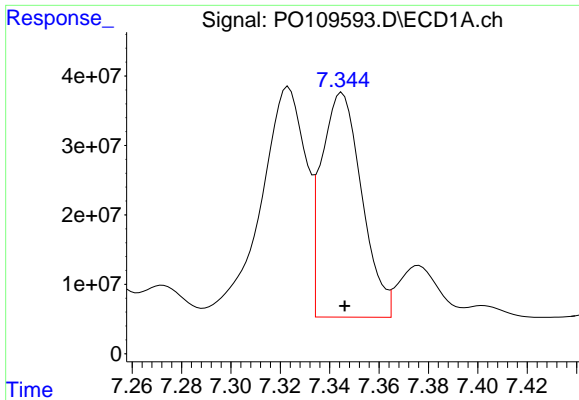
#36 AR-1262-1

R.T.: 6.874 min
 Delta R.T.: 0.029 min
 Response: 189663221
 Conc: 284.85 ng/ml



#36 AR-1262-1

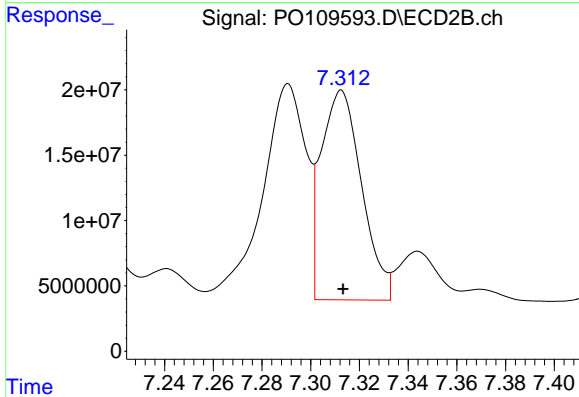
R.T.: 6.846 min
 Delta R.T.: 0.031 min
 Response: 172017366
 Conc: 542.28 ng/ml



#37 AR-1262-2

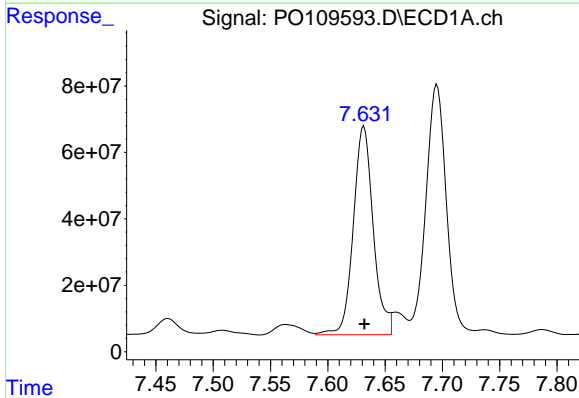
R.T.: 7.345 min
 Delta R.T.: -0.001 min
 Response: 366749562
 Conc: 324.64 ng/ml

Instrument :
 ECD_O
 ClientSampleId :
 K084-2BDL



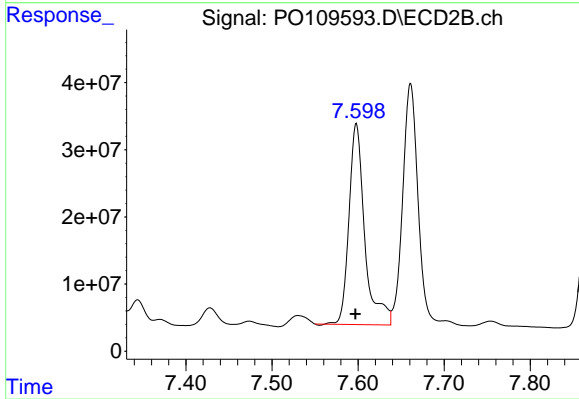
#37 AR-1262-2

R.T.: 7.313 min
 Delta R.T.: 0.000 min
 Response: 185025844
 Conc: 371.08 ng/ml



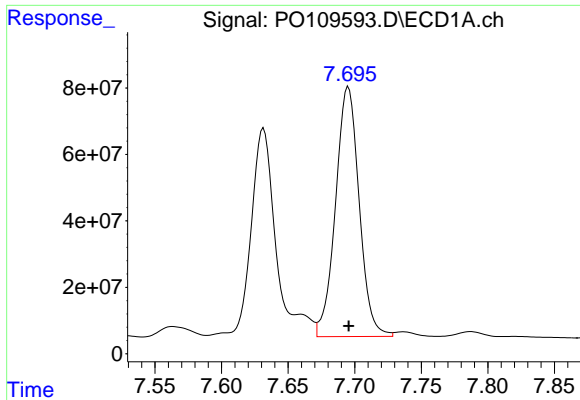
#38 AR-1262-3

R.T.: 7.632 min
 Delta R.T.: 0.000 min
 Response: 758446875
 Conc: 1691.97 ng/ml



#38 AR-1262-3

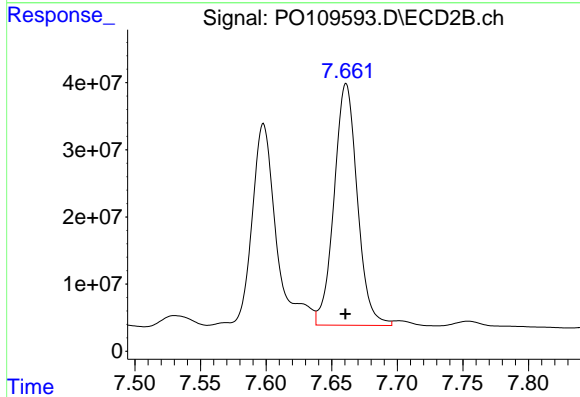
R.T.: 7.598 min
 Delta R.T.: 0.000 min
 Response: 380756001
 Conc: 1940.11 ng/ml



#39 AR-1262-4

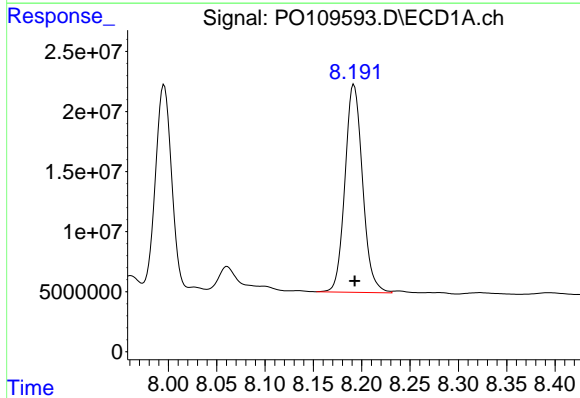
R.T.: 7.695 min
 Delta R.T.: 0.000 min
 Response: 929041702
 Conc: 1120.40 ng/ml

Instrument :
 ECD_O
 ClientSampleId :
 K084-2BDL



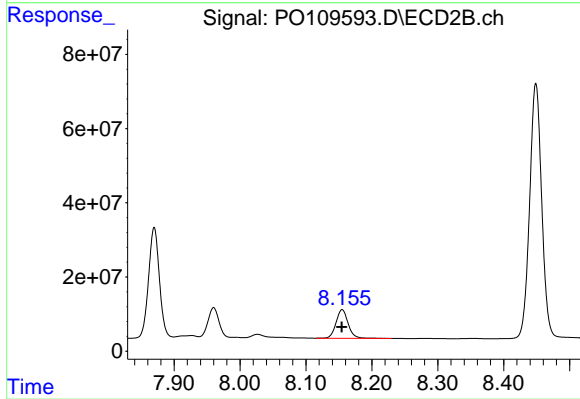
#39 AR-1262-4

R.T.: 7.661 min
 Delta R.T.: 0.000 min
 Response: 443617177
 Conc: 1250.02 ng/ml



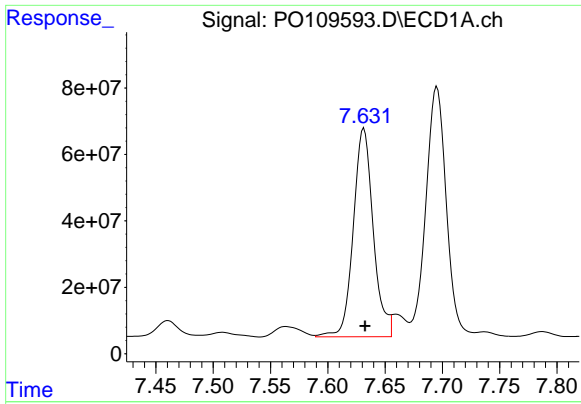
#40 AR-1262-5

R.T.: 8.192 min
 Delta R.T.: 0.000 min
 Response: 218873551
 Conc: 586.27 ng/ml



#40 AR-1262-5

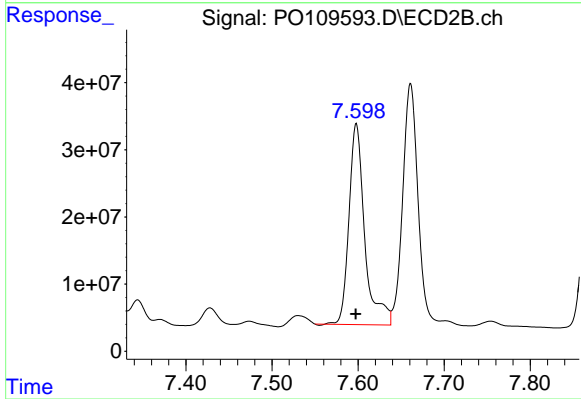
R.T.: 8.155 min
 Delta R.T.: 0.000 min
 Response: 98452008
 Conc: 687.81 ng/ml



#41 AR-1268-1

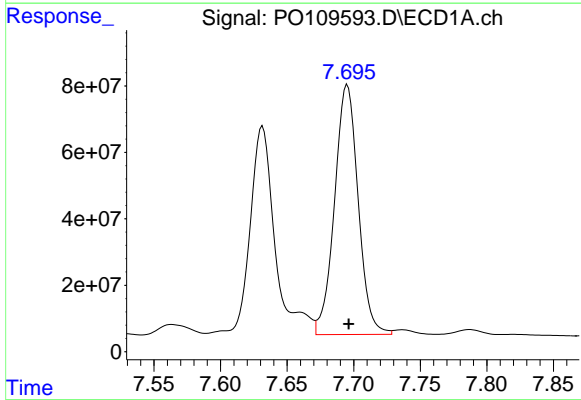
R.T.: 7.632 min
 Delta R.T.: 0.000 min
 Response: 758446875
 Conc: 572.75 ng/ml

Instrument :
 ECD_O
 ClientSampleId :
 K084-2BDL



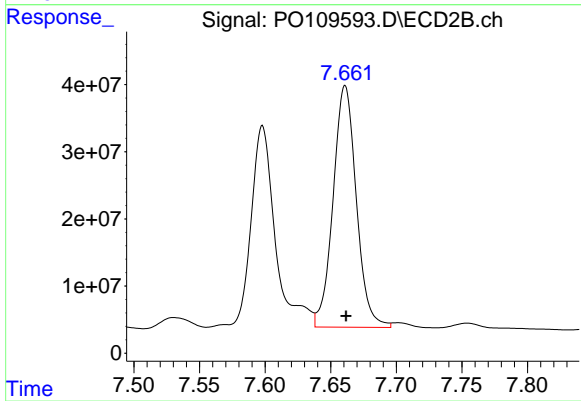
#41 AR-1268-1

R.T.: 7.598 min
 Delta R.T.: 0.000 min
 Response: 380756001
 Conc: 666.34 ng/ml



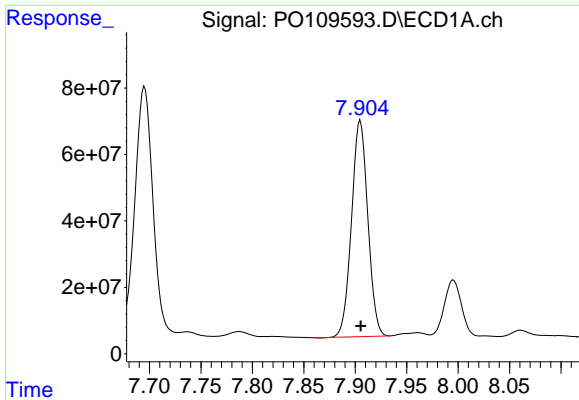
#42 AR-1268-2

R.T.: 7.695 min
 Delta R.T.: -0.001 min
 Response: 929041702
 Conc: 768.37 ng/ml



#42 AR-1268-2

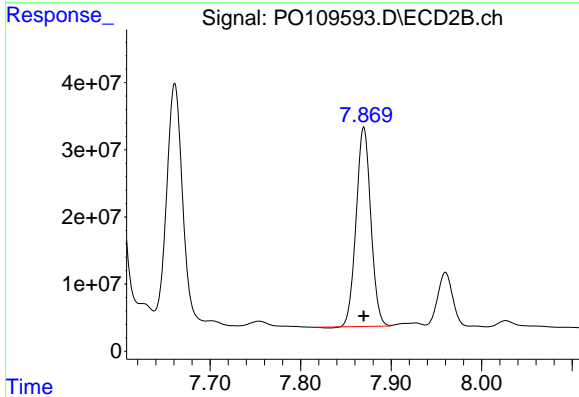
R.T.: 7.661 min
 Delta R.T.: 0.000 min
 Response: 443617177
 Conc: 845.08 ng/ml



#43 AR-1268-3

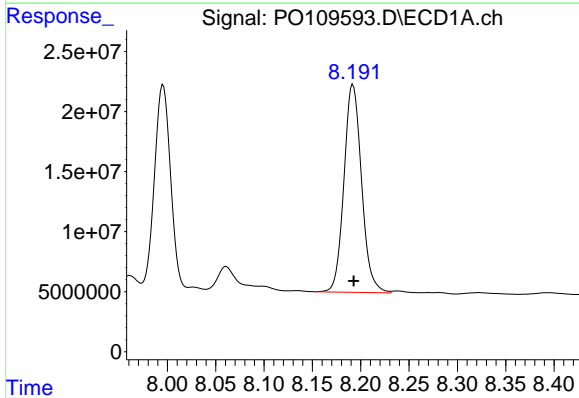
R.T.: 7.905 min
 Delta R.T.: 0.000 min
 Response: 717053666
 Conc: 704.25 ng/ml

Instrument :
 ECD_O
 ClientSampleId :
 K084-2BDL



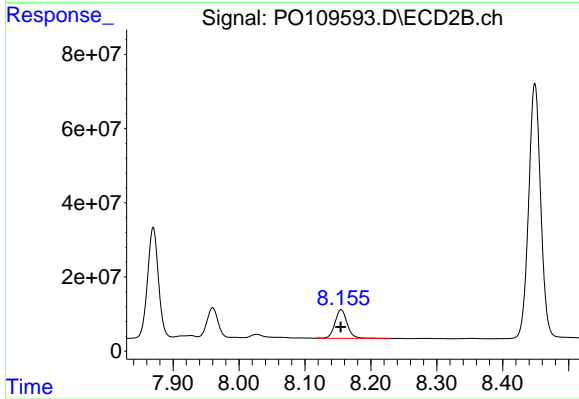
#43 AR-1268-3

R.T.: 7.870 min
 Delta R.T.: 0.000 min
 Response: 334050118
 Conc: 780.41 ng/ml



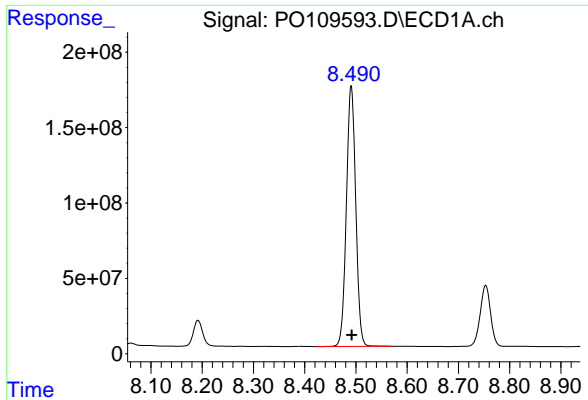
#44 AR-1268-4

R.T.: 8.192 min
 Delta R.T.: 0.000 min
 Response: 218873551
 Conc: 515.17 ng/ml



#44 AR-1268-4

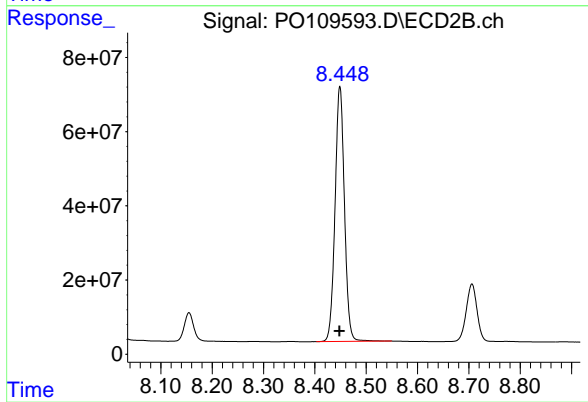
R.T.: 8.155 min
 Delta R.T.: 0.000 min
 Response: 98452008
 Conc: 610.23 ng/ml



#45 AR-1268-5

R.T.: 8.491 min
Delta R.T.: -0.001 min
Response: 2187594310
Conc: 724.45 ng/ml

Instrument :
ECD_O
ClientSampleId :
K084-2BDL



#45 AR-1268-5

R.T.: 8.449 min
Delta R.T.: 0.000 min
Response: 877246261
Conc: 802.50 ng/ml