

Data Path : Z:\pestpcbsrv\HPCHEM1\ECD_0\Data\P0022825\
 Data File : P0109610.D
 Signal(s) : Signal #1: ECD1A.ch Signal #2: ECD2B.ch
 Acq On : 28 Feb 2025 21:49
 Operator : YP/AJ
 Sample : Q1436-04DL 20X
 Misc :
 ALS Vial : 34 Sample Multiplier: 1

Instrument :
 ECD_0
 ClientSampleId :
 K084-9ADL

Integration File signal 1: autoint1.e
 Integration File signal 2: autoint2.e
 Quant Time: Mar 01 00:32:00 2025
 Quant Method : Z:\pestpcbsrv\HPCHEM1\ECD_0\methods\P0022025.M
 Quant Title : GC EXTRACTABLES
 QLast Update : Fri Feb 21 04:40:23 2025
 Response via : Initial Calibration
 Integrator: ChemStation

Volume Inj. : 2 µl
 Signal #1 Phase : ZB-MR1 Signal #2 Phase: ZB-MR2
 Signal #1 Info : 30Mx0.32mmx 0.50µ Signal #2 Info : 30M x 0.32mm x 0.25µm

Compound	RT#1	RT#2	Resp#1	Resp#2	ng/ml	ng/ml

System Monitoring Compounds						
1) SA Tetrachlo...	3.696	3.693	13191408	7317307	1.394	1.398
2) SA Decachlor...	8.754	8.706	26195172	10610831	3.045	3.332
Target Compounds						
26) L6 AR-1254-1	5.600	5.579	199.7E6	107.8E6	387.402	412.269
27) L6 AR-1254-2	5.749	5.727	261.3E6	141.1E6	580.117	601.572
28) L6 AR-1254-3	6.155	6.130	539.8E6	285.8E6	753.897	801.114
29) L6 AR-1254-4	6.384	6.357	341.8E6	173.5E6	816.131	898.246
30) L6 AR-1254-5	6.804	6.775	1127.3E6	578.7E6	1806.803	1950.114
41) L9 AR-1268-1	7.632	7.598	54990958	24826941	41.527	43.448
42) L9 AR-1268-2	7.694	7.660	107.4E6	50935920	88.816	97.031
43) L9 AR-1268-3	7.905	7.870	37038921	17742492	36.378	41.450
44) L9 AR-1268-4	8.192	8.154	18676861	8103432	43.960	50.227
45) L9 AR-1268-5	8.492	8.448	101.2E6	43868371	33.524	40.130

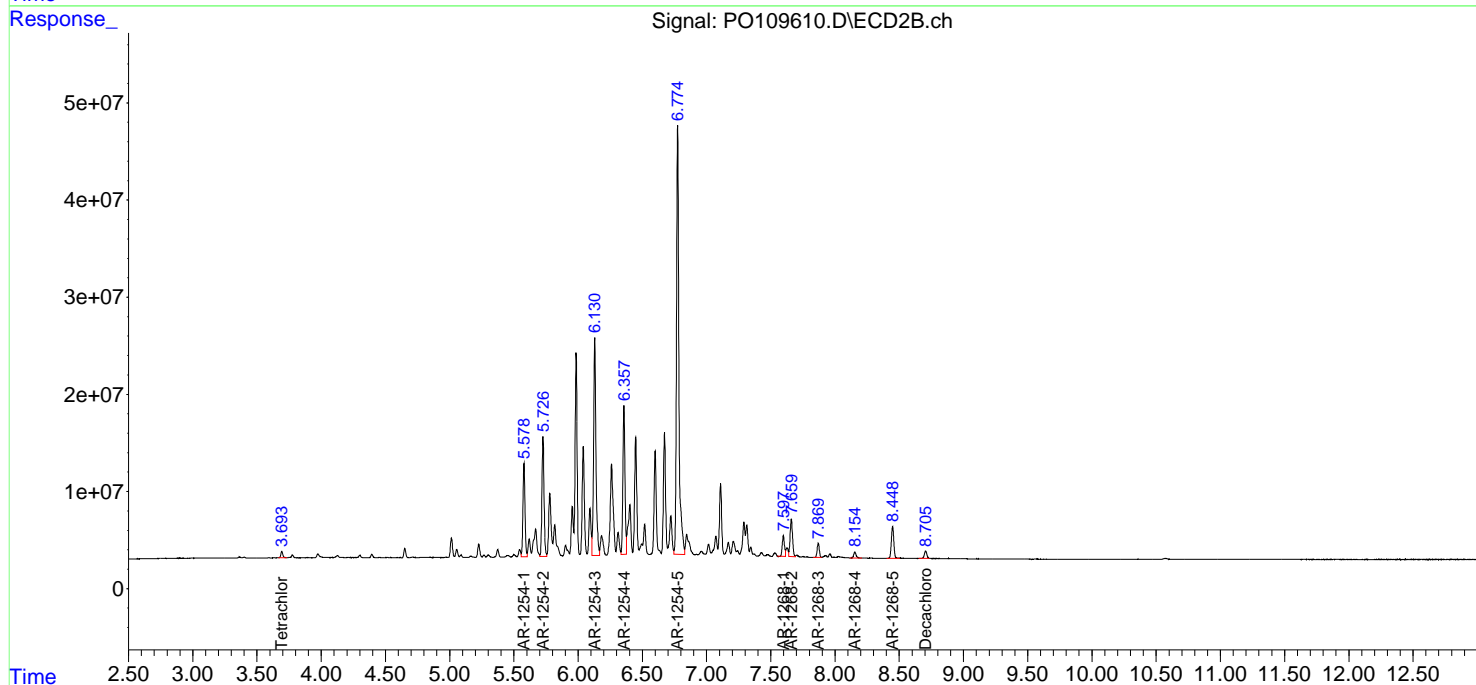
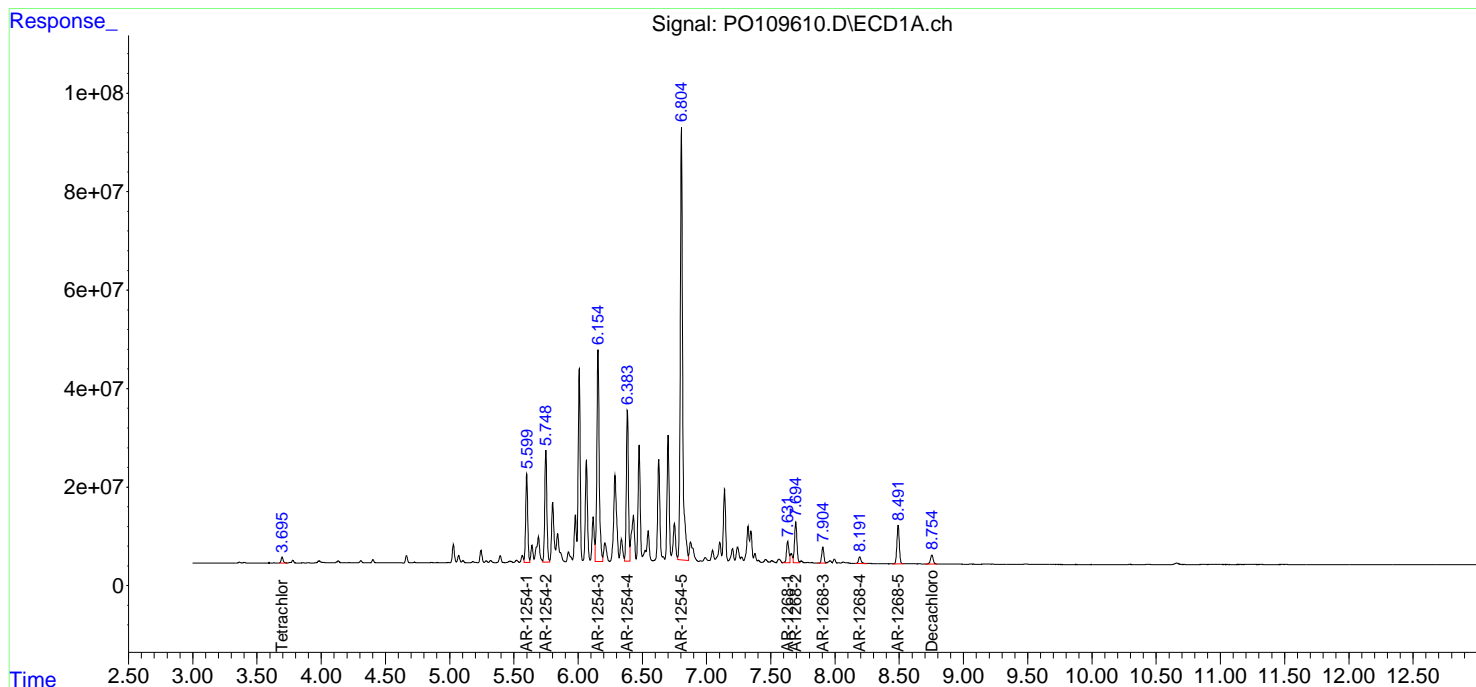
(f)=RT Delta > 1/2 Window (#)=Amounts differ by > 25% (m)=manual int.

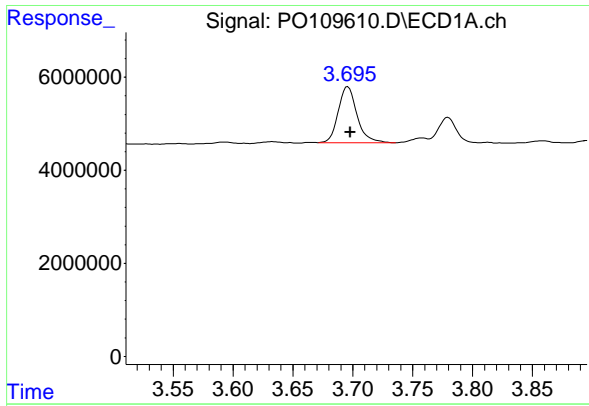
Data Path : Z:\pestpcbsrv\HPCHEM1\ECD_O\Data\PO022825\
 Data File : PO109610.D
 Signal(s) : Signal #1: ECD1A.ch Signal #2: ECD2B.ch
 Acq On : 28 Feb 2025 21:49
 Operator : YP/AJ
 Sample : Q1436-04DL 20X
 Misc :
 ALS Vial : 34 Sample Multiplier: 1

Instrument :
 ECD_O
 ClientSampleId :
 K084-9ADL

Integration File signal 1: autoint1.e
 Integration File signal 2: autoint2.e
 Quant Time: Mar 01 00:32:00 2025
 Quant Method : Z:\pestpcbsrv\HPCHEM1\ECD_O\methods\PO022025.M
 Quant Title : GC EXTRACTABLES
 QLast Update : Fri Feb 21 04:40:23 2025
 Response via : Initial Calibration
 Integrator: ChemStation

Volume Inj. : 2 µl
 Signal #1 Phase : ZB-MR1 Signal #2 Phase: ZB-MR2
 Signal #1 Info : 30Mx0.32mmx 0.50µm Signal #2 Info : 30M x 0.32mm x 0.25µm

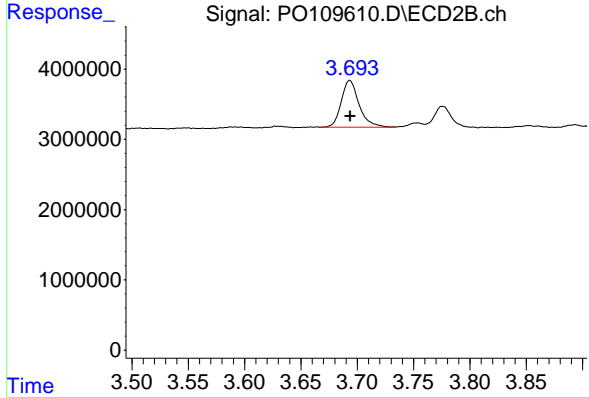




#1 Tetrachloro-m-xylene

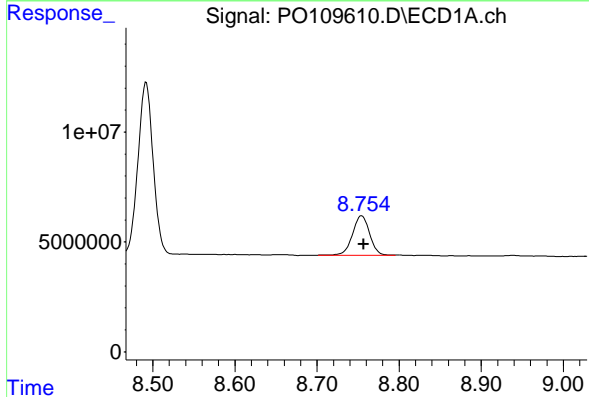
R.T.: 3.696 min
 Delta R.T.: -0.002 min
 Response: 13191408
 Conc: 1.39 ng/ml

Instrument :
 ECD_O
 ClientSampleId :
 K084-9ADL



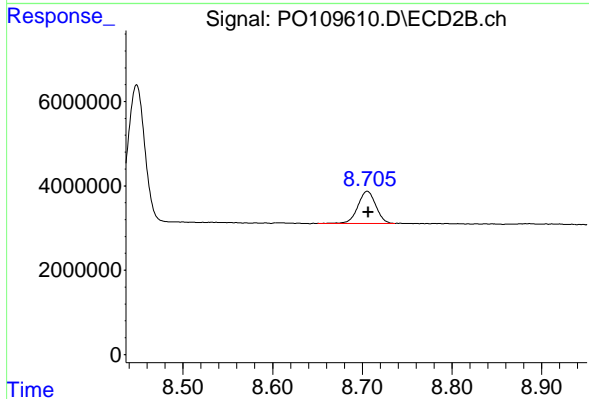
#1 Tetrachloro-m-xylene

R.T.: 3.693 min
 Delta R.T.: 0.000 min
 Response: 7317307
 Conc: 1.40 ng/ml



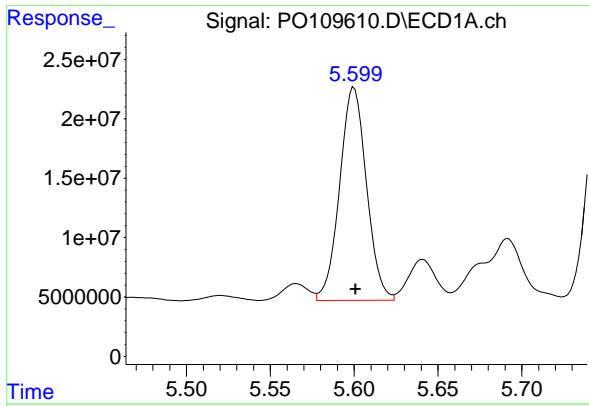
#2 Decachlorobiphenyl

R.T.: 8.754 min
 Delta R.T.: -0.002 min
 Response: 26195172
 Conc: 3.05 ng/ml



#2 Decachlorobiphenyl

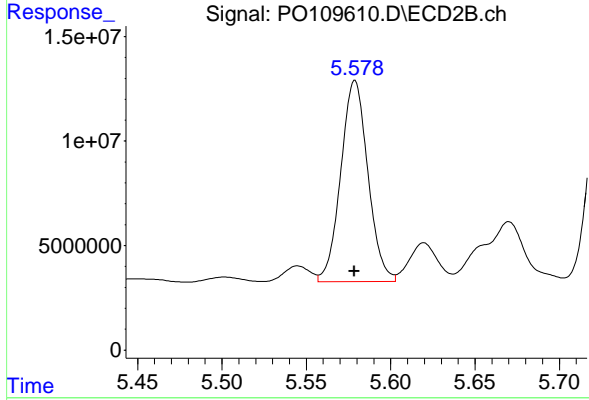
R.T.: 8.706 min
 Delta R.T.: -0.001 min
 Response: 10610831
 Conc: 3.33 ng/ml



#26 AR-1254-1

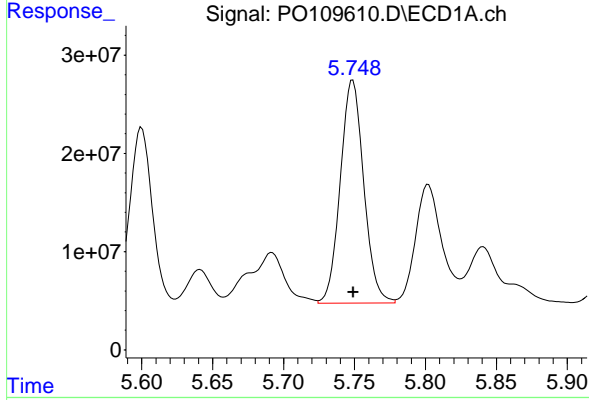
R.T.: 5.600 min
 Delta R.T.: 0.000 min
 Response: 199747162
 Conc: 387.40 ng/ml

Instrument :
 ECD_O
 ClientSampleId :
 K084-9ADL



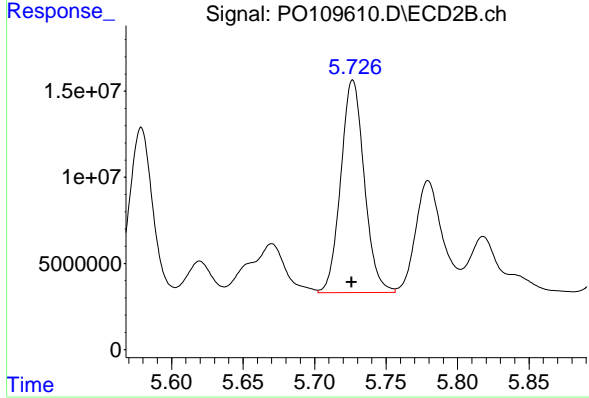
#26 AR-1254-1

R.T.: 5.579 min
 Delta R.T.: 0.000 min
 Response: 107824154
 Conc: 412.27 ng/ml



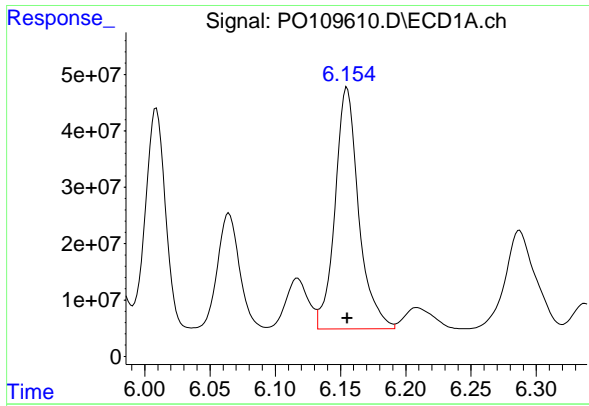
#27 AR-1254-2

R.T.: 5.749 min
 Delta R.T.: 0.000 min
 Response: 261269854
 Conc: 580.12 ng/ml



#27 AR-1254-2

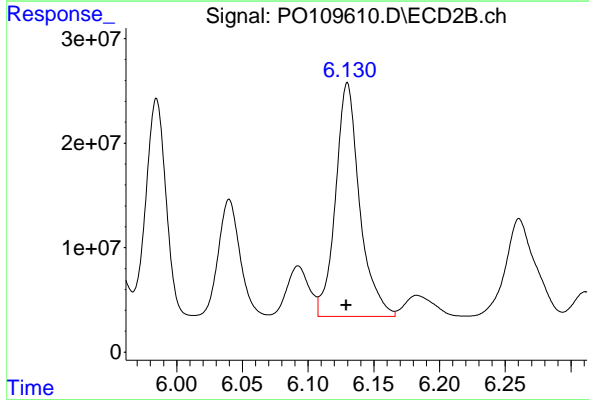
R.T.: 5.727 min
 Delta R.T.: 0.000 min
 Response: 141105653
 Conc: 601.57 ng/ml



#28 AR-1254-3

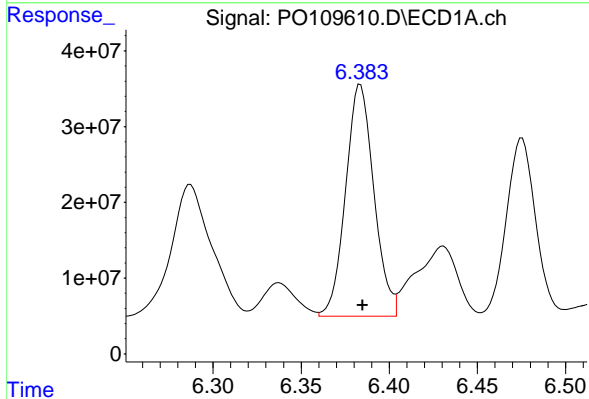
R.T.: 6.155 min
 Delta R.T.: 0.000 min
 Response: 539756776
 Conc: 753.90 ng/ml

Instrument :
 ECD_O
 ClientSampleId :
 K084-9ADL



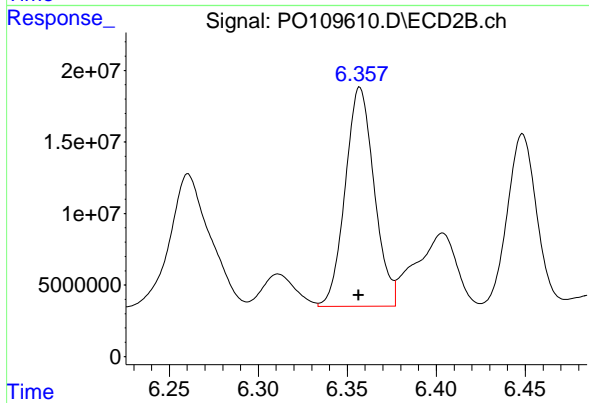
#28 AR-1254-3

R.T.: 6.130 min
 Delta R.T.: 0.000 min
 Response: 285761009
 Conc: 801.11 ng/ml



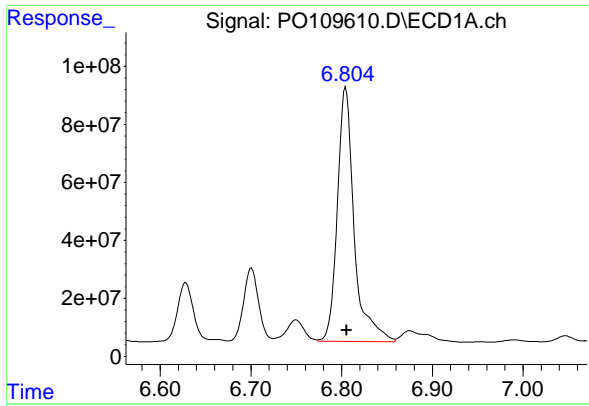
#29 AR-1254-4

R.T.: 6.384 min
 Delta R.T.: -0.001 min
 Response: 341788927
 Conc: 816.13 ng/ml



#29 AR-1254-4

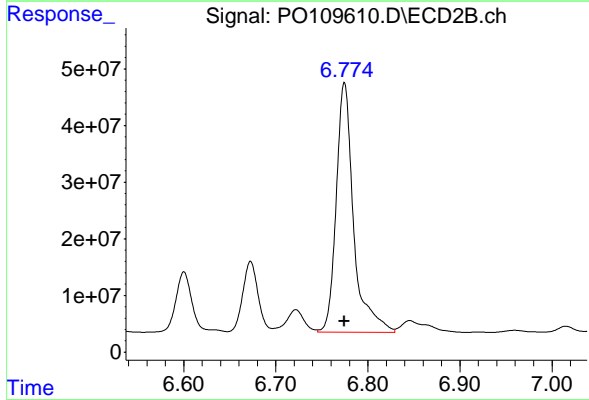
R.T.: 6.357 min
 Delta R.T.: 0.000 min
 Response: 173472270
 Conc: 898.25 ng/ml



#30 AR-1254-5

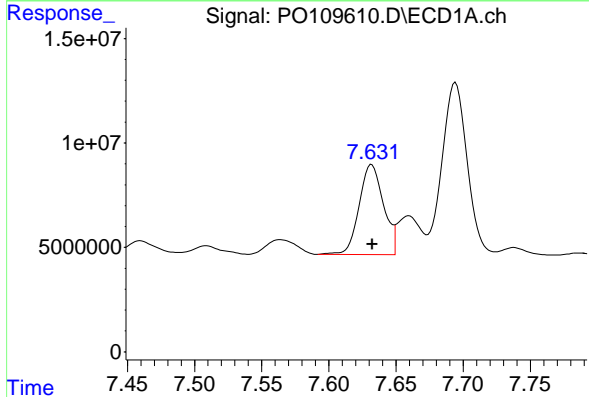
R.T.: 6.804 min
 Delta R.T.: -0.001 min
 Response: 1127269424
 Conc: 1806.80 ng/ml

Instrument :
 ECD_O
 ClientSampleId :
 K084-9ADL



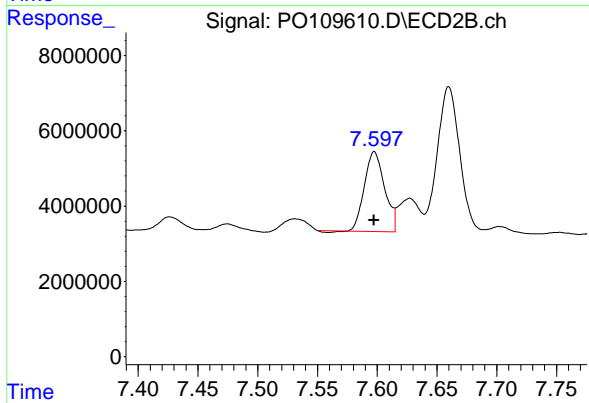
#30 AR-1254-5

R.T.: 6.775 min
 Delta R.T.: 0.000 min
 Response: 578661585
 Conc: 1950.11 ng/ml



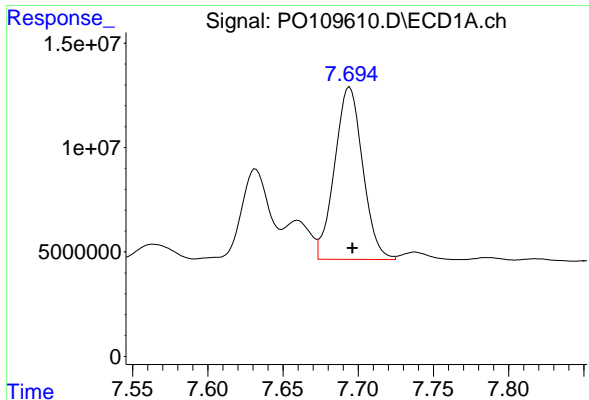
#41 AR-1268-1

R.T.: 7.632 min
 Delta R.T.: 0.000 min
 Response: 54990958
 Conc: 41.53 ng/ml



#41 AR-1268-1

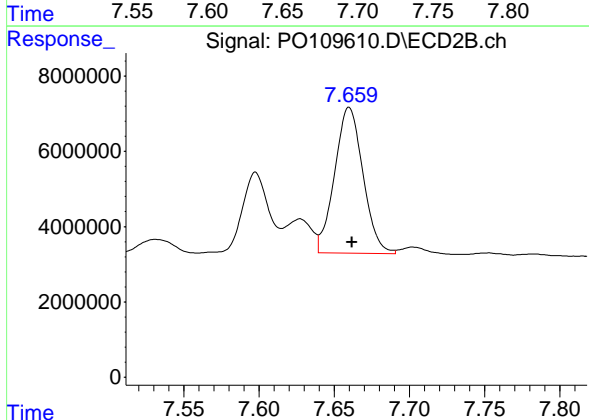
R.T.: 7.598 min
 Delta R.T.: 0.000 min
 Response: 24826941
 Conc: 43.45 ng/ml



#42 AR-1268-2

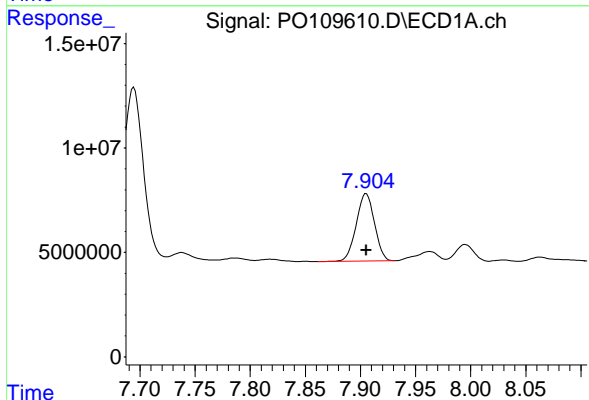
R.T.: 7.694 min
 Delta R.T.: -0.002 min
 Response: 107387465
 Conc: 88.82 ng/ml

Instrument :
 ECD_O
 ClientSampleId :
 K084-9ADL



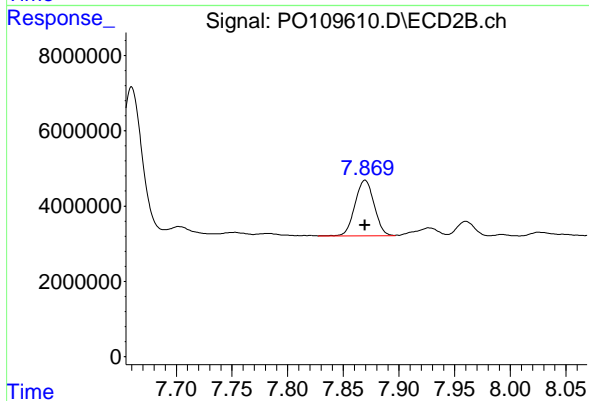
#42 AR-1268-2

R.T.: 7.660 min
 Delta R.T.: -0.002 min
 Response: 50935920
 Conc: 97.03 ng/ml



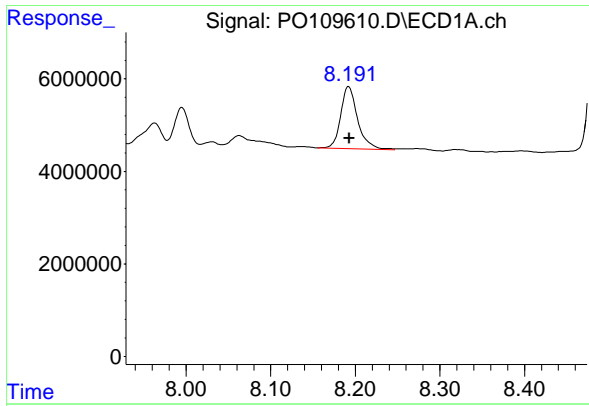
#43 AR-1268-3

R.T.: 7.905 min
 Delta R.T.: 0.000 min
 Response: 37038921
 Conc: 36.38 ng/ml



#43 AR-1268-3

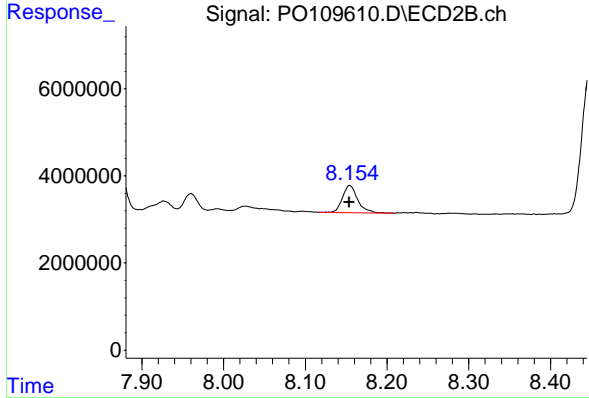
R.T.: 7.870 min
 Delta R.T.: 0.000 min
 Response: 17742492
 Conc: 41.45 ng/ml



#44 AR-1268-4

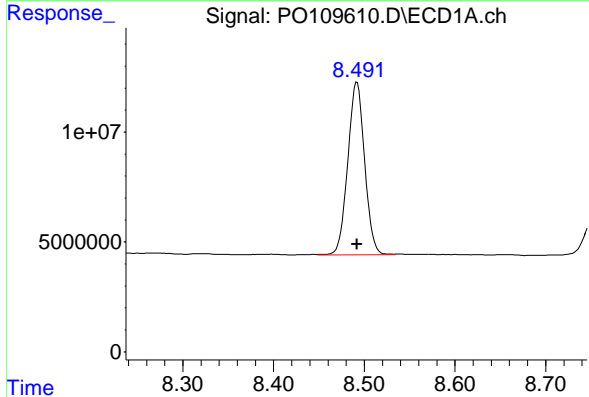
R.T.: 8.192 min
 Delta R.T.: 0.000 min
 Response: 18676861
 Conc: 43.96 ng/ml

Instrument :
 ECD_O
 ClientSampleId :
 K084-9ADL



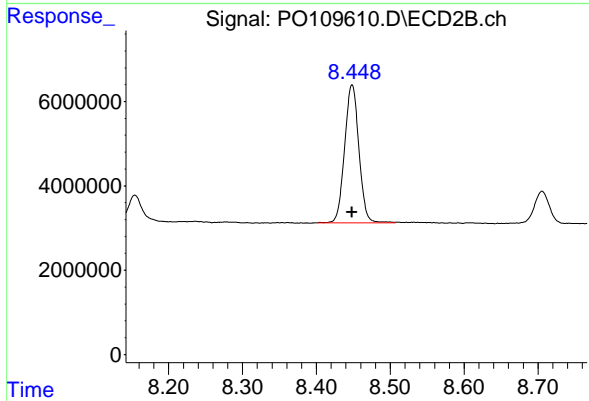
#44 AR-1268-4

R.T.: 8.154 min
 Delta R.T.: 0.000 min
 Response: 8103432
 Conc: 50.23 ng/ml



#45 AR-1268-5

R.T.: 8.492 min
 Delta R.T.: 0.000 min
 Response: 101230763
 Conc: 33.52 ng/ml



#45 AR-1268-5

R.T.: 8.448 min
 Delta R.T.: 0.000 min
 Response: 43868371
 Conc: 40.13 ng/ml