

Data Path : Z:\pestpcbsrv\HPCHEM1\ECD_0\Data\P0022825\
 Data File : P0109611.D
 Signal(s) : Signal #1: ECD1A.ch Signal #2: ECD2B.ch
 Acq On : 28 Feb 2025 22:07
 Operator : YP/AJ
 Sample : Q1436-07DL 5X
 Misc :
 ALS Vial : 35 Sample Multiplier: 1

Instrument :
 ECD_0
 ClientSampleId :
 K084-10ADL

Integration File signal 1: autoint1.e
 Integration File signal 2: autoint2.e
 Quant Time: Mar 01 00:32:32 2025
 Quant Method : Z:\pestpcbsrv\HPCHEM1\ECD_0\methods\P0022025.M
 Quant Title : GC EXTRACTABLES
 QLast Update : Fri Feb 21 04:40:23 2025
 Response via : Initial Calibration
 Integrator: ChemStation

Volume Inj. : 2 µl
 Signal #1 Phase : ZB-MR1 Signal #2 Phase: ZB-MR2
 Signal #1 Info : 30Mx0.32mmx 0.50µ Signal #2 Info : 30M x 0.32mm x 0.25µm

Compound	RT#1	RT#2	Resp#1	Resp#2	ng/ml	ng/ml

System Monitoring Compounds						
1) SA Tetrachlo...	3.696	3.694	52295533	29694880	5.525	5.673
2) SA Decachlor...	8.754	8.704	106.7E6	44776992	12.409	14.062
Target Compounds						
26) L6 AR-1254-1	5.599	5.579	1777.4E6	961.3E6	3447.233	3675.513
27) L6 AR-1254-2	5.748	5.726	2218.4E6	1197.1E6	4925.747	5103.758
28) L6 AR-1254-3	6.154	6.130	4755.7E6	2553.8E6	6642.414	7159.320
29) L6 AR-1254-4	6.384	6.358	3163.9E6	1620.3E6	7554.796	8390.209
30) L6 AR-1254-5	6.804	6.775	9656.2E6	5033.7E6	15477.164	16963.803
41) L9 AR-1268-1	7.632	7.597	234.1E6	106.7E6	176.803	186.660
42) L9 AR-1268-2	7.693	7.659	781.4E6	360.8E6	646.300	687.261
43) L9 AR-1268-3	7.905	7.870	156.2E6	72154109	153.412	168.567
44) L9 AR-1268-4	8.193	8.154	95587986	41340329	224.988	256.239
45) L9 AR-1268-5	8.492	8.448	444.4E6	183.8E6	147.186	168.181

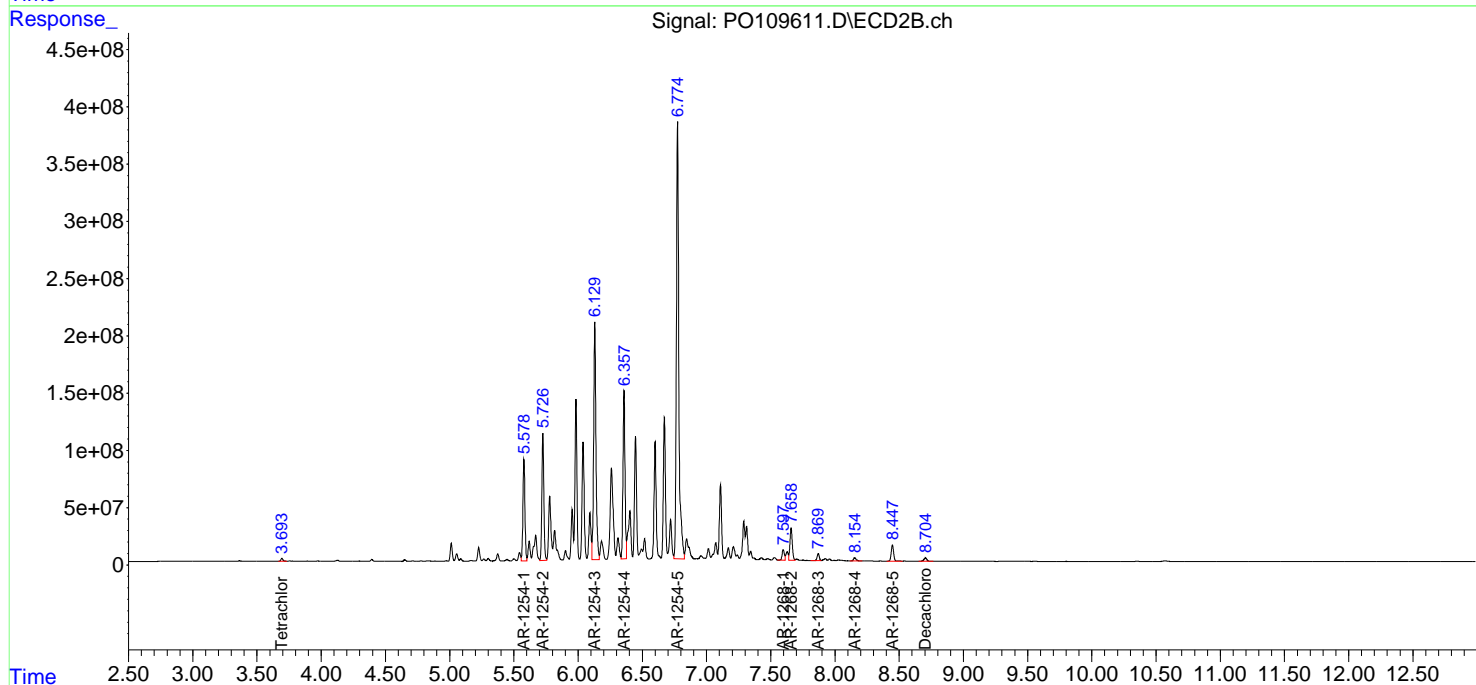
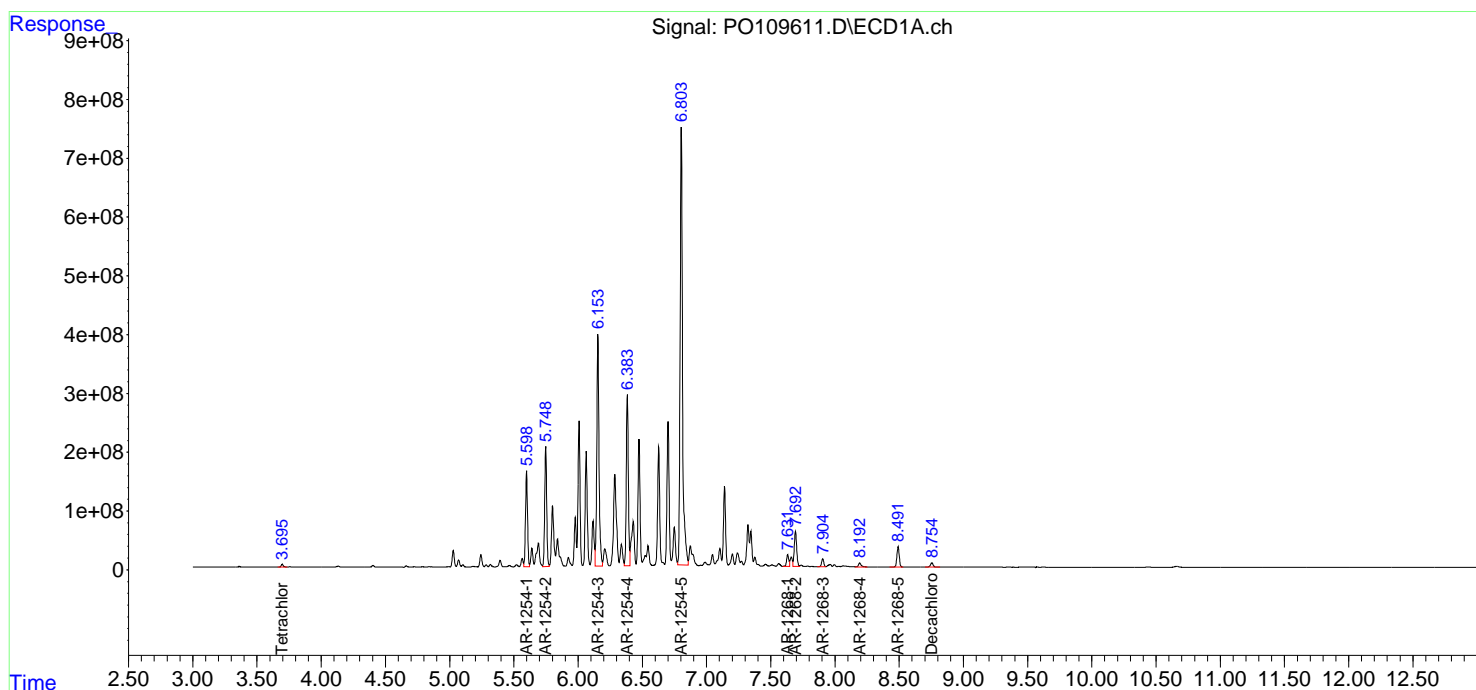
(f)=RT Delta > 1/2 Window (#)=Amounts differ by > 25% (m)=manual int.

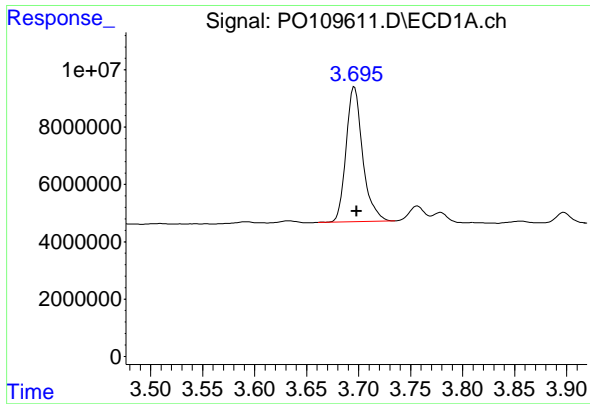
Data Path : Z:\pestpcbsrv\HPCHEM1\ECD_O\Data\PO022825\
 Data File : PO109611.D
 Signal(s) : Signal #1: ECD1A.ch Signal #2: ECD2B.ch
 Acq On : 28 Feb 2025 22:07
 Operator : YP/AJ
 Sample : Q1436-07DL 5X
 Misc :
 ALS Vial : 35 Sample Multiplier: 1

Instrument :
 ECD_O
 ClientSampleId :
 K084-10ADL

Integration File signal 1: autoint1.e
 Integration File signal 2: autoint2.e
 Quant Time: Mar 01 00:32:32 2025
 Quant Method : Z:\pestpcbsrv\HPCHEM1\ECD_O\methods\PO022025.M
 Quant Title : GC EXTRACTABLES
 QLast Update : Fri Feb 21 04:40:23 2025
 Response via : Initial Calibration
 Integrator: ChemStation

Volume Inj. : 2 µl
 Signal #1 Phase : ZB-MR1 Signal #2 Phase: ZB-MR2
 Signal #1 Info : 30Mx0.32mmx 0.50µm Signal #2 Info : 30M x 0.32mm x 0.25µm

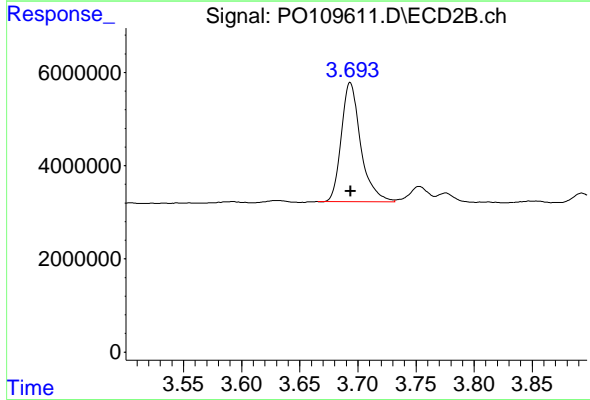




#1 Tetrachloro-m-xylene

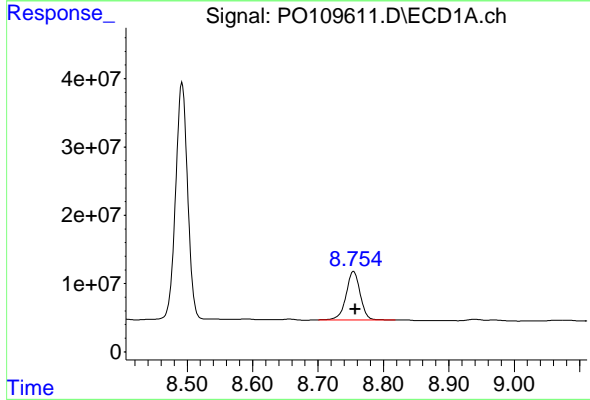
R.T.: 3.696 min
 Delta R.T.: -0.002 min
 Response: 52295533
 Conc: 5.53 ng/ml

Instrument :
 ECD_O
 ClientSampleId :
 K084-10ADL



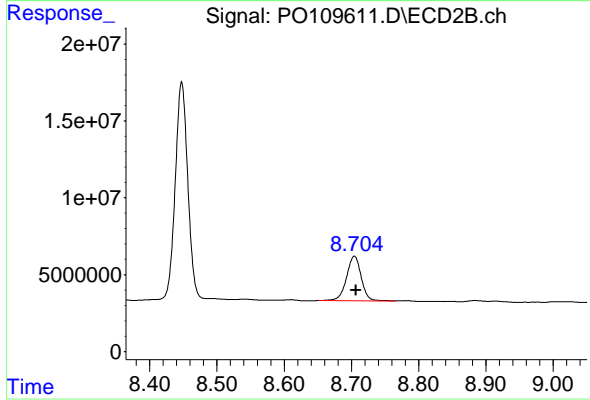
#1 Tetrachloro-m-xylene

R.T.: 3.694 min
 Delta R.T.: 0.000 min
 Response: 29694880
 Conc: 5.67 ng/ml



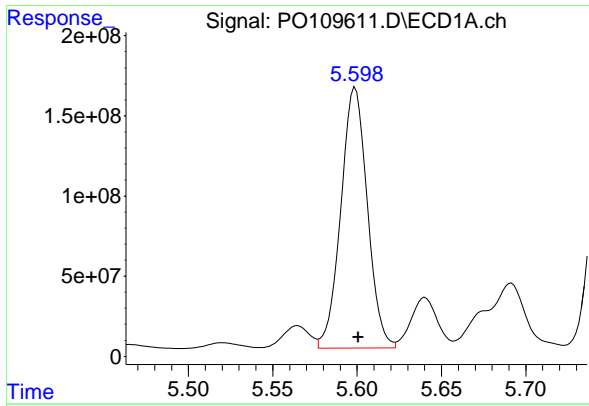
#2 Decachlorobiphenyl

R.T.: 8.754 min
 Delta R.T.: -0.002 min
 Response: 106739873
 Conc: 12.41 ng/ml



#2 Decachlorobiphenyl

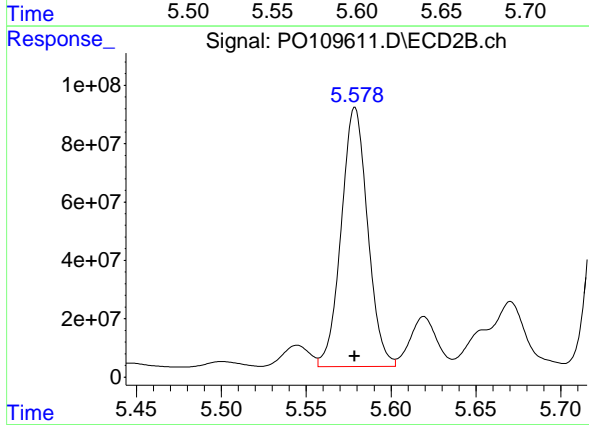
R.T.: 8.704 min
 Delta R.T.: -0.002 min
 Response: 44776992
 Conc: 14.06 ng/ml



#26 AR-1254-1

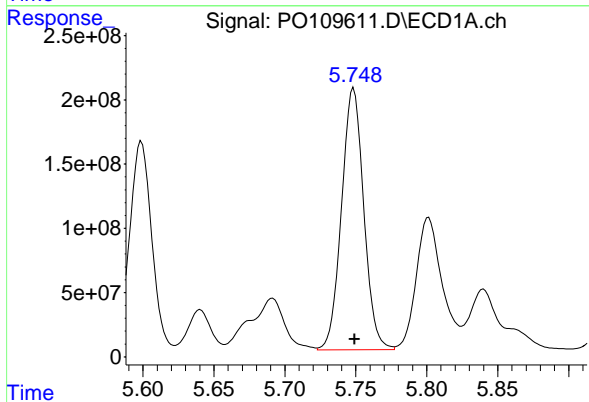
R.T.: 5.599 min
 Delta R.T.: -0.002 min
 Response: 1777416329
 Conc: 3447.23 ng/ml

Instrument :
 ECD_O
 ClientSampleId :
 K084-10ADL



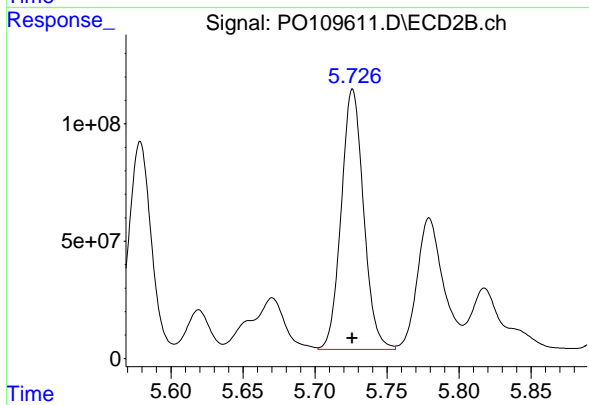
#26 AR-1254-1

R.T.: 5.579 min
 Delta R.T.: 0.000 min
 Response: 961287554
 Conc: 3675.51 ng/ml



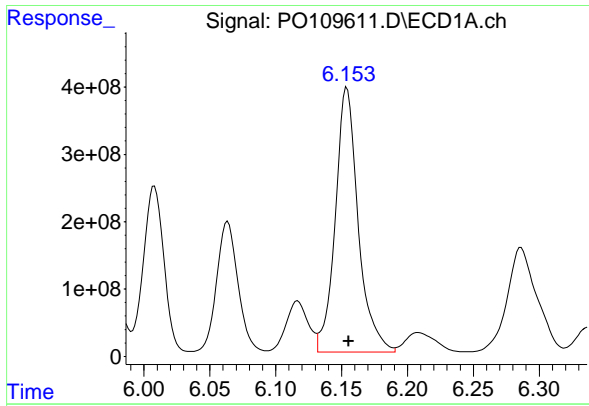
#27 AR-1254-2

R.T.: 5.748 min
 Delta R.T.: 0.000 min
 Response: 2218431097
 Conc: 4925.75 ng/ml



#27 AR-1254-2

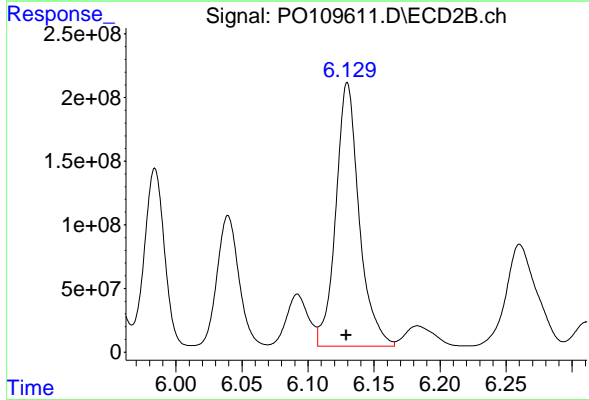
R.T.: 5.726 min
 Delta R.T.: 0.000 min
 Response: 1197144932
 Conc: 5103.76 ng/ml



#28 AR-1254-3

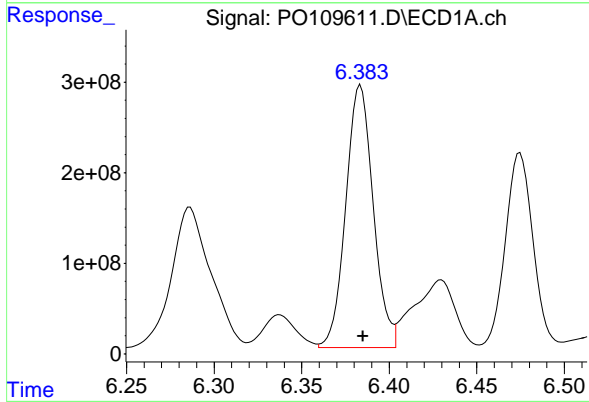
R.T.: 6.154 min
 Delta R.T.: -0.001 min
 Response: 4755672541
 Conc: 6642.41 ng/ml

Instrument :
 ECD_O
 ClientSampleId :
 K084-10ADL



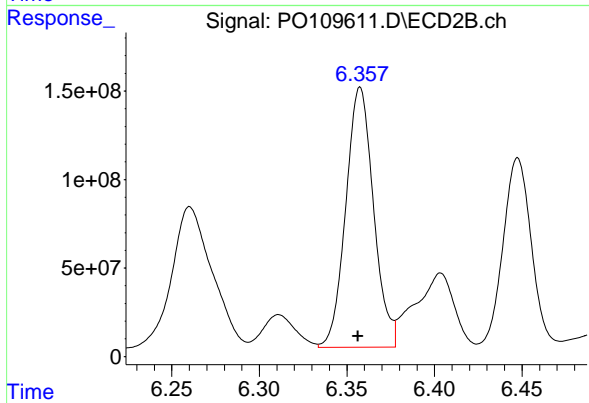
#28 AR-1254-3

R.T.: 6.130 min
 Delta R.T.: 0.000 min
 Response: 2553762067
 Conc: 7159.32 ng/ml



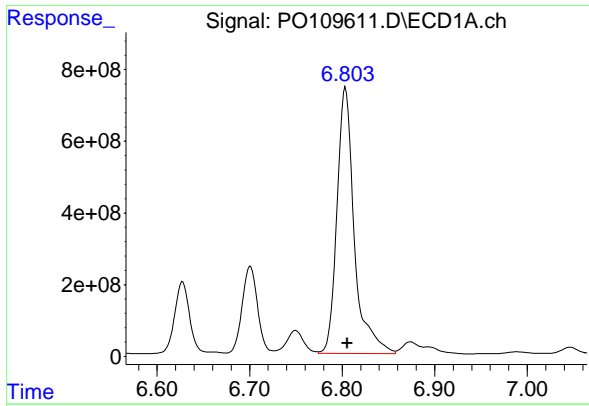
#29 AR-1254-4

R.T.: 6.384 min
 Delta R.T.: -0.001 min
 Response: 3163884480
 Conc: 7554.80 ng/ml



#29 AR-1254-4

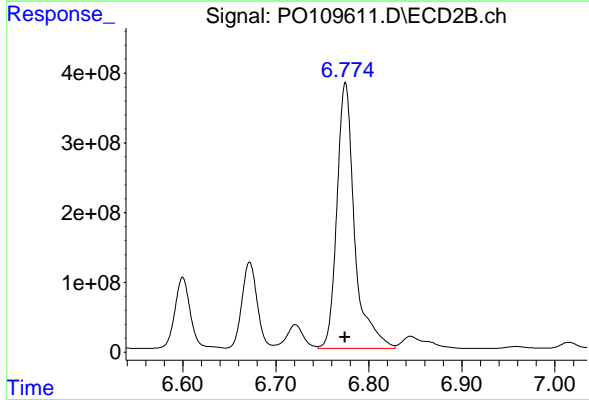
R.T.: 6.358 min
 Delta R.T.: 0.001 min
 Response: 1620345670
 Conc: 8390.21 ng/ml



#30 AR-1254-5

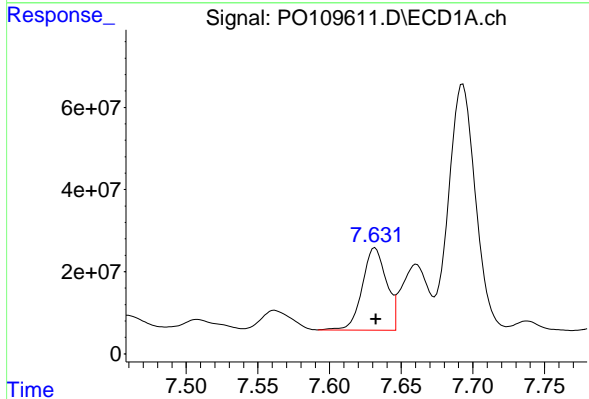
R.T.: 6.804 min
 Delta R.T.: -0.002 min
 Response: 9656248299
 Conc: 15477.16 ng/ml

Instrument :
 ECD_O
 ClientSampleId :
 K084-10ADL



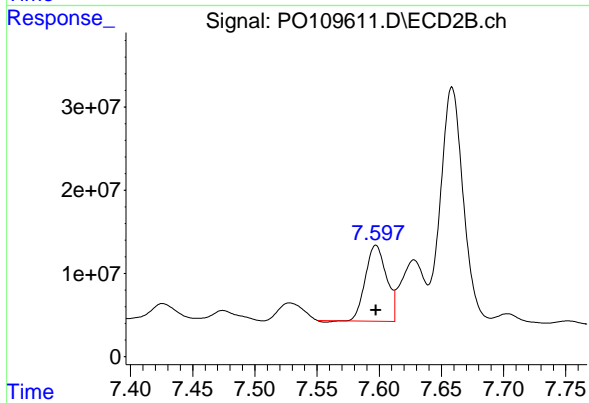
#30 AR-1254-5

R.T.: 6.775 min
 Delta R.T.: 0.000 min
 Response: 5033707150
 Conc: 16963.80 ng/ml



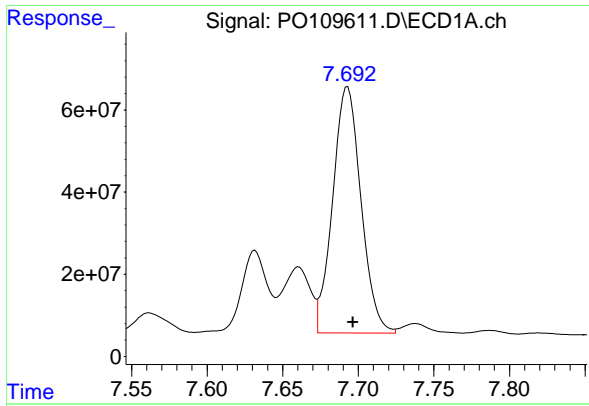
#41 AR-1268-1

R.T.: 7.632 min
 Delta R.T.: 0.000 min
 Response: 234126119
 Conc: 176.80 ng/ml



#41 AR-1268-1

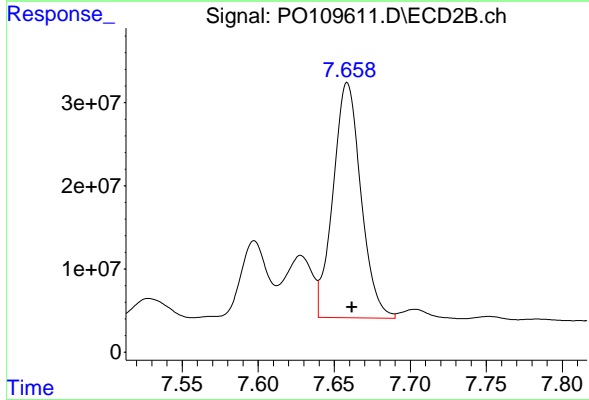
R.T.: 7.597 min
 Delta R.T.: 0.000 min
 Response: 106659997
 Conc: 186.66 ng/ml



#42 AR-1268-2

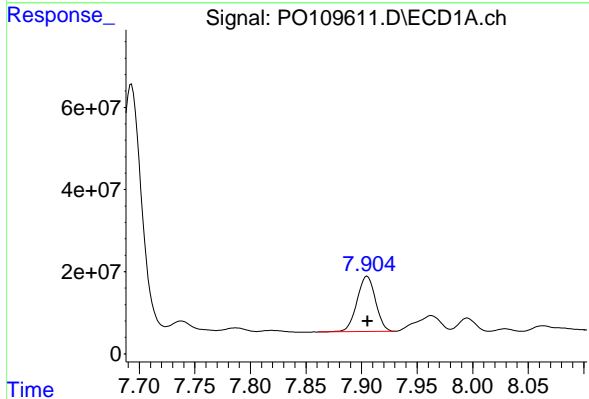
R.T.: 7.693 min
 Delta R.T.: -0.004 min
 Response: 781445709
 Conc: 646.30 ng/ml

Instrument :
 ECD_O
 ClientSampleId :
 K084-10ADL



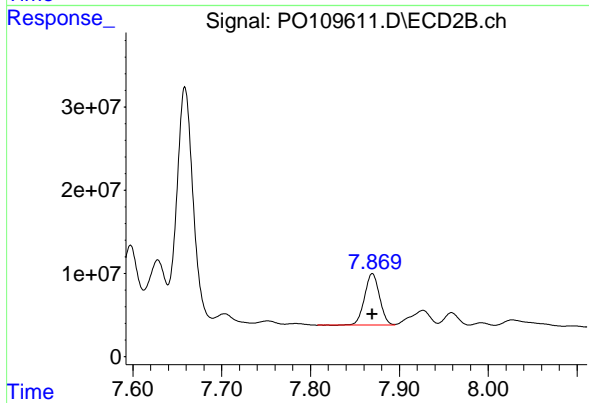
#42 AR-1268-2

R.T.: 7.659 min
 Delta R.T.: -0.003 min
 Response: 360773500
 Conc: 687.26 ng/ml



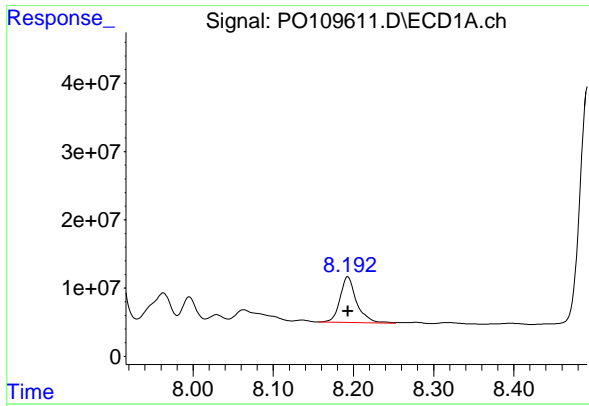
#43 AR-1268-3

R.T.: 7.905 min
 Delta R.T.: 0.000 min
 Response: 156200373
 Conc: 153.41 ng/ml



#43 AR-1268-3

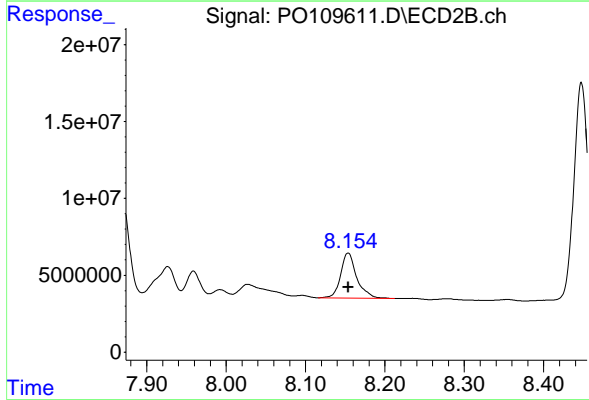
R.T.: 7.870 min
 Delta R.T.: 0.000 min
 Response: 72154109
 Conc: 168.57 ng/ml



#44 AR-1268-4

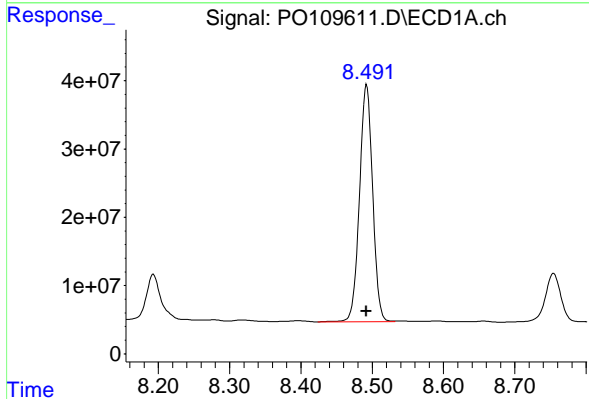
R.T.: 8.193 min
 Delta R.T.: 0.000 min
 Response: 95587986
 Conc: 224.99 ng/ml

Instrument :
 ECD_O
 ClientSampleId :
 K084-10ADL



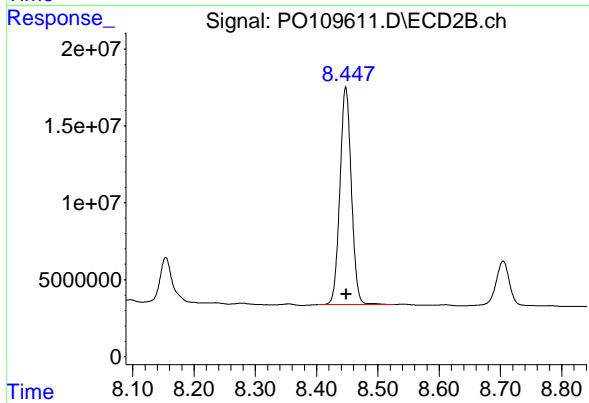
#44 AR-1268-4

R.T.: 8.154 min
 Delta R.T.: 0.000 min
 Response: 41340329
 Conc: 256.24 ng/ml



#45 AR-1268-5

R.T.: 8.492 min
 Delta R.T.: 0.000 min
 Response: 444449684
 Conc: 147.19 ng/ml



#45 AR-1268-5

R.T.: 8.448 min
 Delta R.T.: 0.000 min
 Response: 183845669
 Conc: 168.18 ng/ml