

Data Path : Z:\pestpcbsrv\HPCHEM1\ECD\_O\Data\P0022825\  
 Data File : P0109612.D  
 Signal(s) : Signal #1: ECD1A.ch Signal #2: ECD2B.ch  
 Acq On : 28 Feb 2025 22:26  
 Operator : YP/AJ  
 Sample : Q1436-07DL2 50X  
 Misc :  
 ALS Vial : 36 Sample Multiplier: 1

Instrument :  
 ECD\_O  
 ClientSampleId :  
 K084-10ADL2

Integration File signal 1: autoint1.e  
 Integration File signal 2: autoint2.e  
 Quant Time: Mar 01 00:32:59 2025  
 Quant Method : Z:\pestpcbsrv\HPCHEM1\ECD\_O\methods\P0022025.M  
 Quant Title : GC EXTRACTABLES  
 QLast Update : Fri Feb 21 04:40:23 2025  
 Response via : Initial Calibration  
 Integrator: ChemStation

Volume Inj. : 2 µl  
 Signal #1 Phase : ZB-MR1 Signal #2 Phase: ZB-MR2  
 Signal #1 Info : 30Mx0.32mmx 0.50µ Signal #2 Info : 30M x 0.32mm x 0.25µm

Compound	RT#1	RT#2	Resp#1	Resp#2	ng/ml	ng/ml
----------	------	------	--------	--------	-------	-------

System Monitoring Compounds

Target Compounds

26)	L6	AR-1254-1	5.600	5.579	209.0E6	112.6E6	405.334	430.391
27)	L6	AR-1254-2	5.749	5.727	257.0E6	138.8E6	570.596	591.948
28)	L6	AR-1254-3	6.154	6.129	527.1E6	278.4E6	736.286	780.374
29)	L6	AR-1254-4	6.384	6.357	342.6E6	173.3E6	818.120	897.097
30)	L6	AR-1254-5	6.804	6.775	999.7E6	510.0E6	1602.396	1718.849
41)	L9	AR-1268-1	7.632	7.597	30735525	13549190	23.210	23.712
42)	L9	AR-1268-2	7.692	7.658	94042116	42344949	77.778	80.666
43)	L9	AR-1268-3	7.905	7.869	19712968	9205119	19.361	21.505
44)	L9	AR-1268-4	8.192	8.154	11168695	4834051	26.288	29.963
45)	L9	AR-1268-5	8.492	8.448	54213980	23986409	17.954	21.943

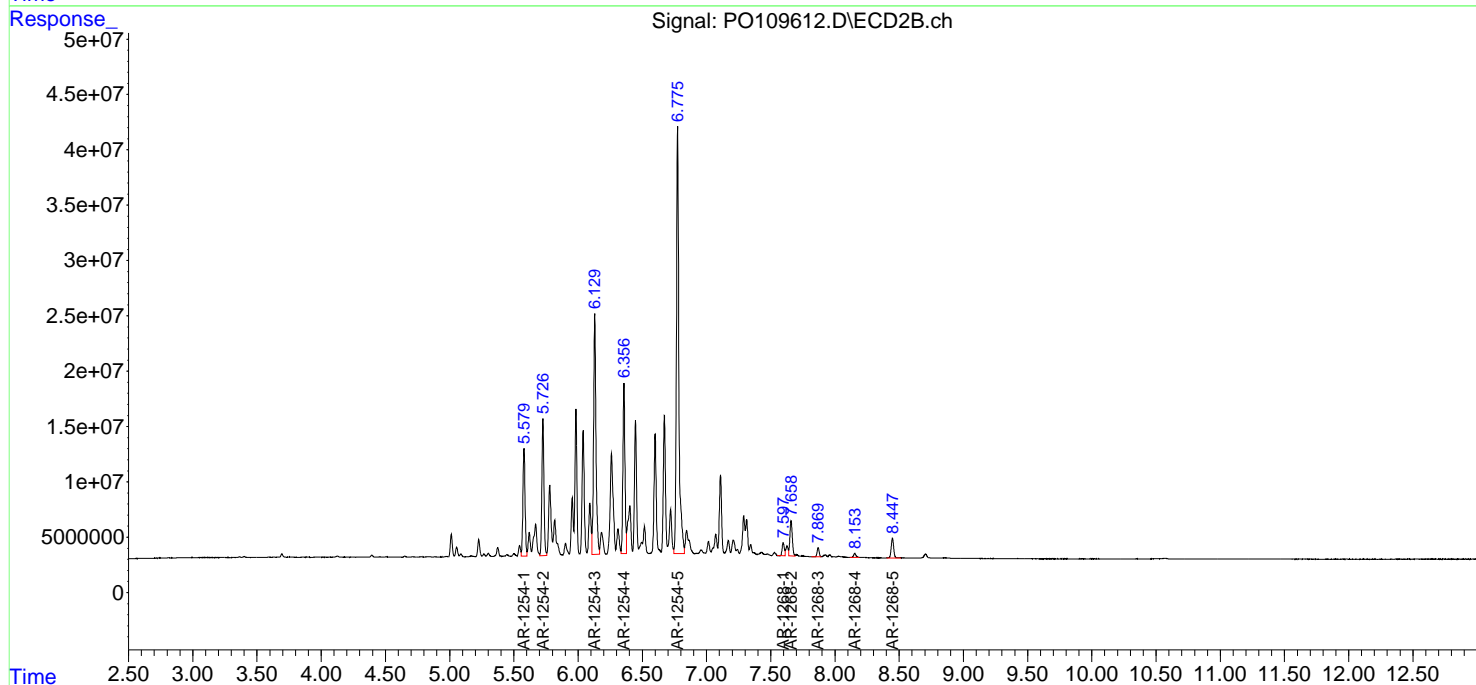
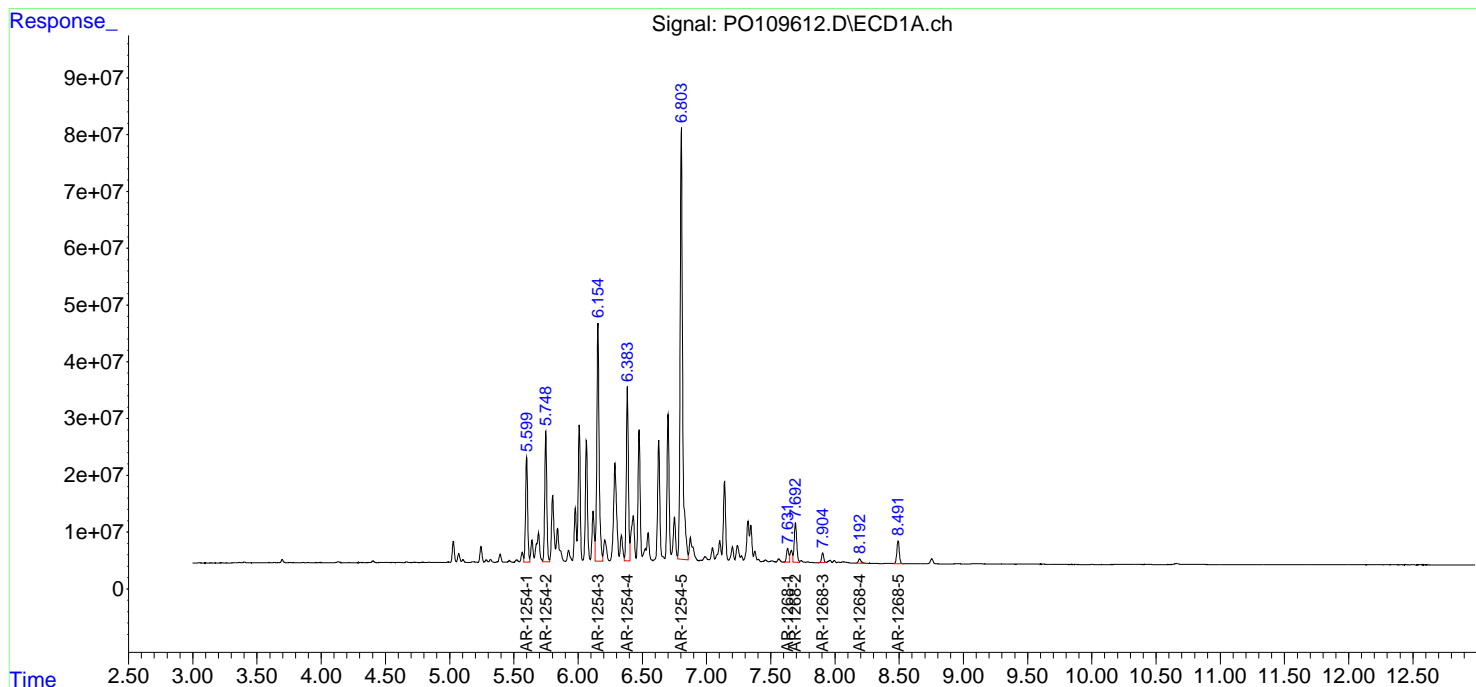
(f)=RT Delta > 1/2 Window (#)=Amounts differ by > 25% (m)=manual int.

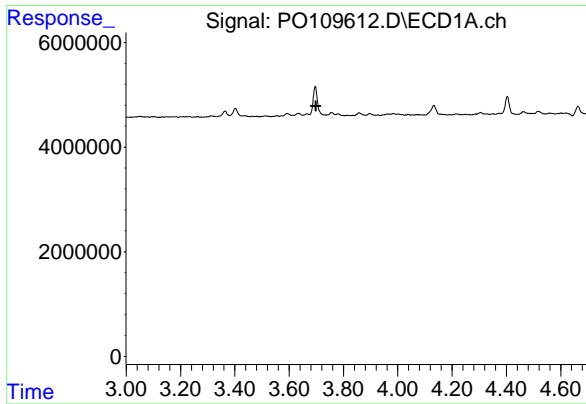
Data Path : Z:\pestpcbsrv\HPCHEM1\ECD\_O\Data\PO022825\  
 Data File : PO109612.D  
 Signal(s) : Signal #1: ECD1A.ch Signal #2: ECD2B.ch  
 Acq On : 28 Feb 2025 22:26  
 Operator : YP/AJ  
 Sample : Q1436-07DL2 50X  
 Misc :  
 ALS Vial : 36 Sample Multiplier: 1

Instrument :  
 ECD\_O  
 ClientSampleId :  
 K084-10ADL2

Integration File signal 1: autoint1.e  
 Integration File signal 2: autoint2.e  
 Quant Time: Mar 01 00:32:59 2025  
 Quant Method : Z:\pestpcbsrv\HPCHEM1\ECD\_O\methods\PO022025.M  
 Quant Title : GC EXTRACTABLES  
 QLast Update : Fri Feb 21 04:40:23 2025  
 Response via : Initial Calibration  
 Integrator: ChemStation

Volume Inj. : 2 µl  
 Signal #1 Phase : ZB-MR1 Signal #2 Phase: ZB-MR2  
 Signal #1 Info : 30Mx0.32mmx 0.50µm Signal #2 Info : 30M x 0.32mm x 0.25µm

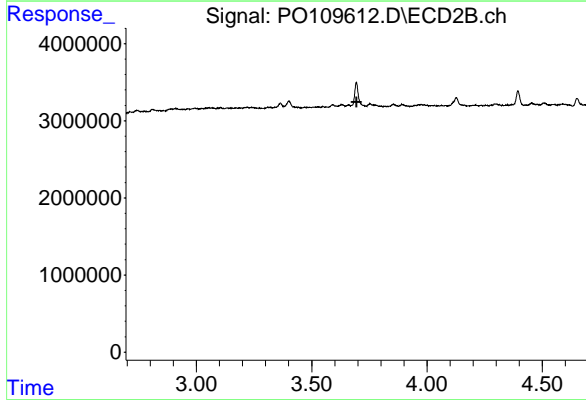




#1 Tetrachloro-m-xylene

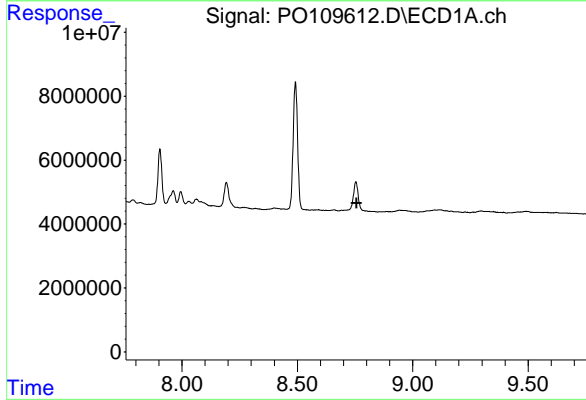
R.T.: 0.000 min  
 Exp R.T. : 3.698 min  
 Response: 0  
 Conc: N.D.

Instrument :  
 ECD\_O  
 ClientSampleId :  
 K084-10ADL2



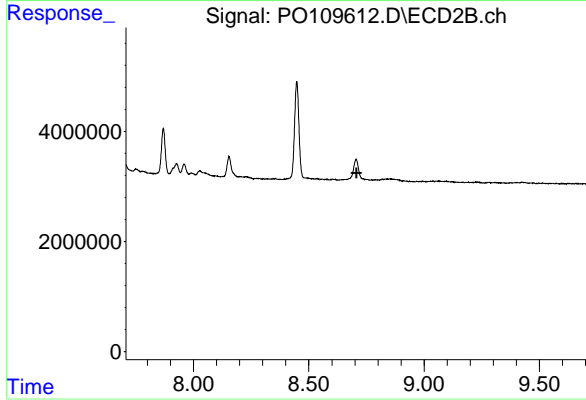
#1 Tetrachloro-m-xylene

R.T.: 0.000 min  
 Exp R.T. : 3.694 min  
 Response: 0  
 Conc: N.D.



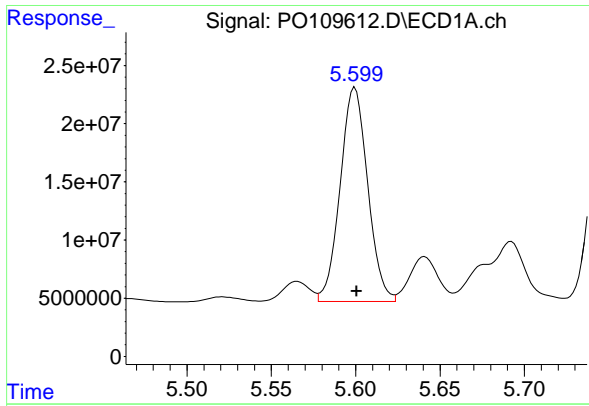
#2 Decachlorobiphenyl

R.T.: 0.000 min  
 Exp R.T. : 8.757 min  
 Response: 0  
 Conc: N.D.



#2 Decachlorobiphenyl

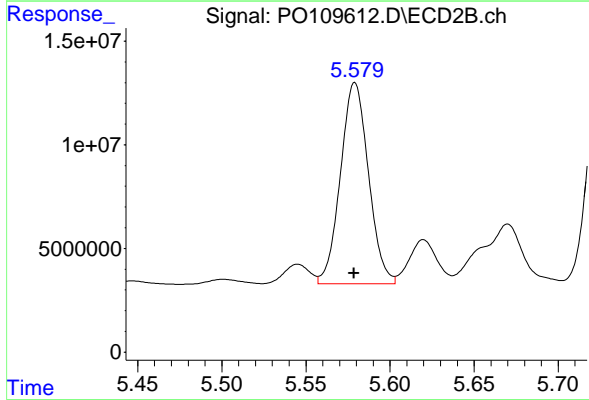
R.T.: 0.000 min  
 Exp R.T. : 8.707 min  
 Response: 0  
 Conc: N.D.



#26 AR-1254-1

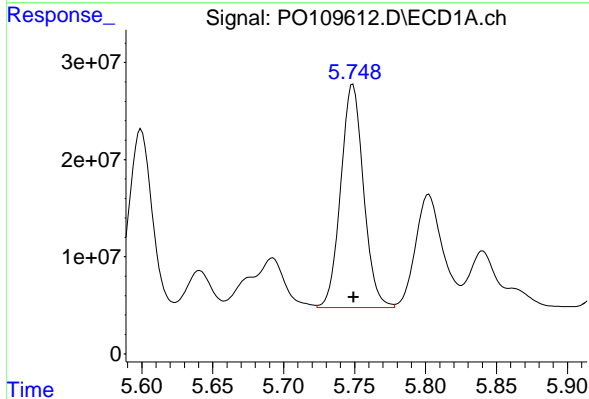
R.T.: 5.600 min  
 Delta R.T.: -0.001 min  
 Response: 208993040  
 Conc: 405.33 ng/ml

Instrument :  
 ECD\_O  
 ClientSampleId :  
 K084-10ADL2



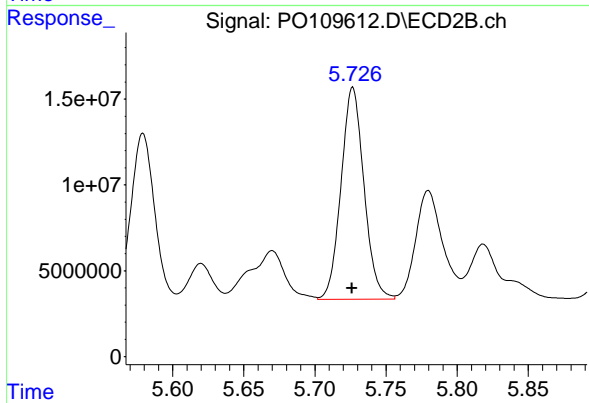
#26 AR-1254-1

R.T.: 5.579 min  
 Delta R.T.: 0.000 min  
 Response: 112563619  
 Conc: 430.39 ng/ml



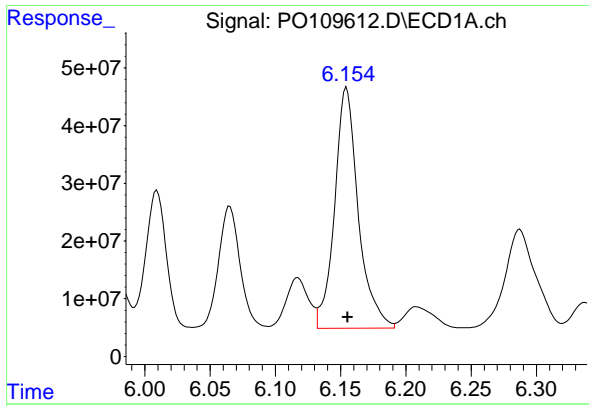
#27 AR-1254-2

R.T.: 5.749 min  
 Delta R.T.: 0.000 min  
 Response: 256981811  
 Conc: 570.60 ng/ml



#27 AR-1254-2

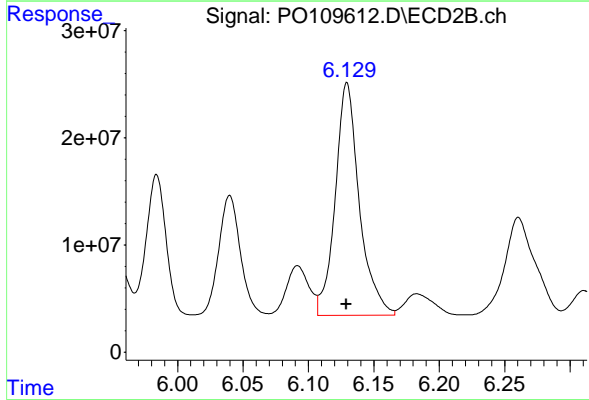
R.T.: 5.727 min  
 Delta R.T.: 0.000 min  
 Response: 138848099  
 Conc: 591.95 ng/ml



#28 AR-1254-3

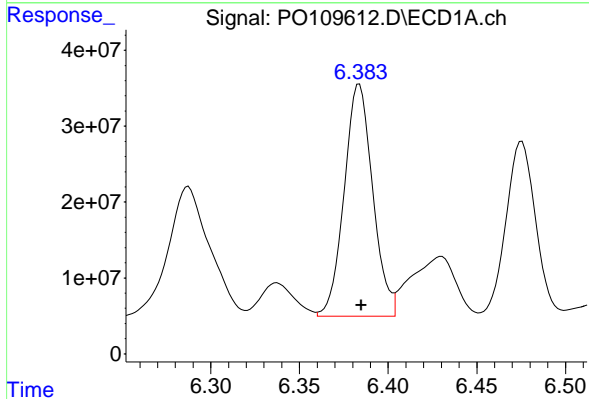
R.T.: 6.154 min  
 Delta R.T.: 0.000 min  
 Response: 527147929  
 Conc: 736.29 ng/ml

Instrument :  
 ECD\_O  
 ClientSampleId :  
 K084-10ADL2



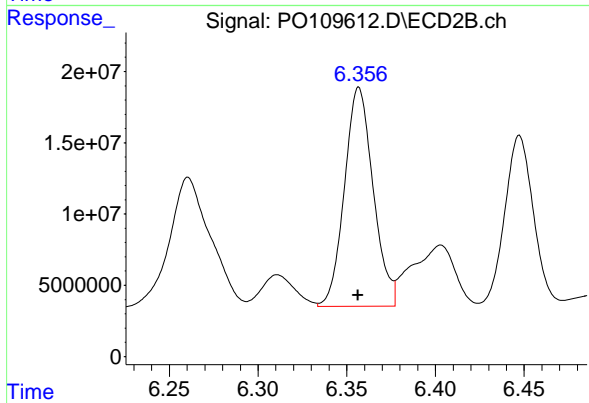
#28 AR-1254-3

R.T.: 6.129 min  
 Delta R.T.: 0.000 min  
 Response: 278362857  
 Conc: 780.37 ng/ml



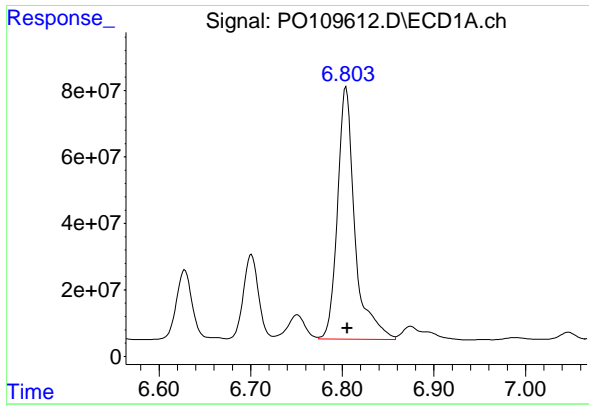
#29 AR-1254-4

R.T.: 6.384 min  
 Delta R.T.: -0.001 min  
 Response: 342621829  
 Conc: 818.12 ng/ml



#29 AR-1254-4

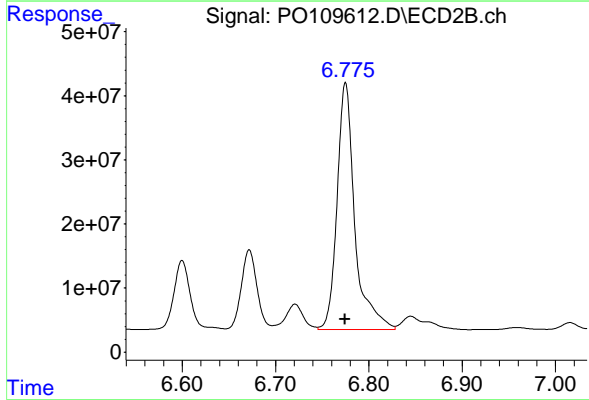
R.T.: 6.357 min  
 Delta R.T.: 0.000 min  
 Response: 173250367  
 Conc: 897.10 ng/ml



#30 AR-1254-5

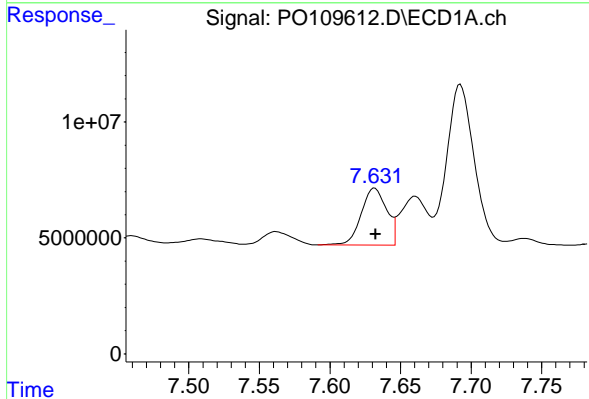
R.T.: 6.804 min  
 Delta R.T.: -0.001 min  
 Response: 999739634  
 Conc: 1602.40 ng/ml

Instrument :  
 ECD\_O  
 ClientSampleId :  
 K084-10ADL2



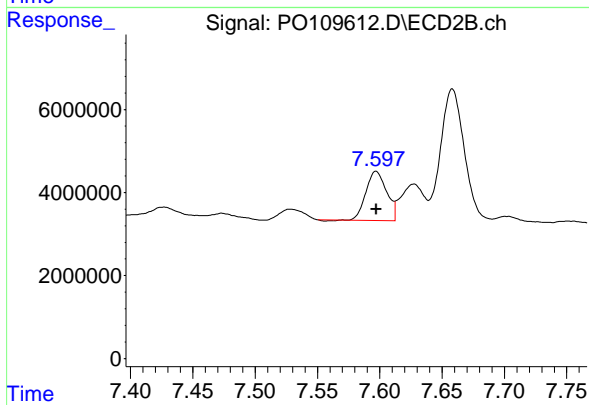
#30 AR-1254-5

R.T.: 6.775 min  
 Delta R.T.: 0.000 min  
 Response: 510038018  
 Conc: 1718.85 ng/ml



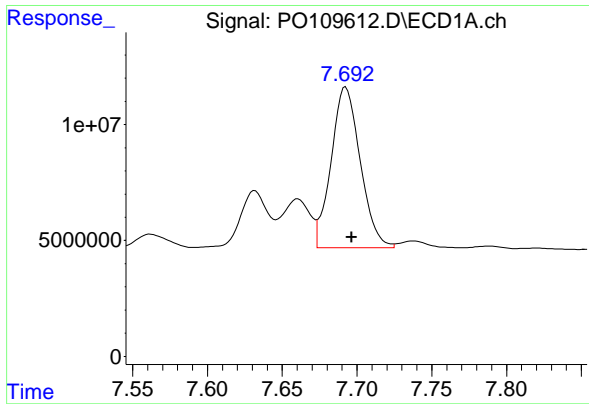
#41 AR-1268-1

R.T.: 7.632 min  
 Delta R.T.: 0.000 min  
 Response: 30735525  
 Conc: 23.21 ng/ml



#41 AR-1268-1

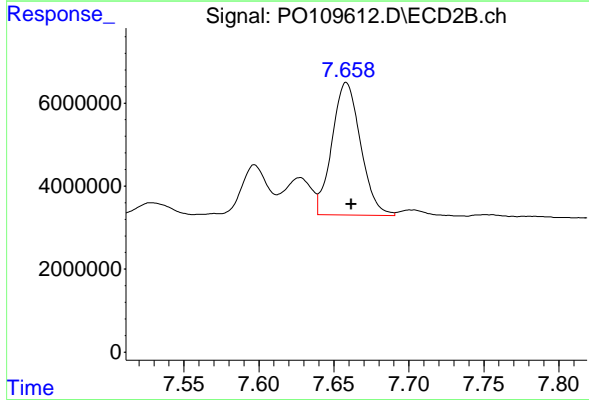
R.T.: 7.597 min  
 Delta R.T.: 0.000 min  
 Response: 13549190  
 Conc: 23.71 ng/ml



#42 AR-1268-2

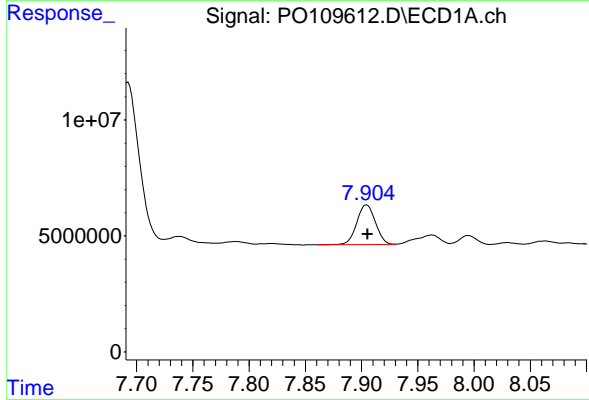
R.T.: 7.692 min  
 Delta R.T.: -0.004 min  
 Response: 94042116  
 Conc: 77.78 ng/ml

Instrument :  
 ECD\_O  
 ClientSampleId :  
 K084-10ADL2



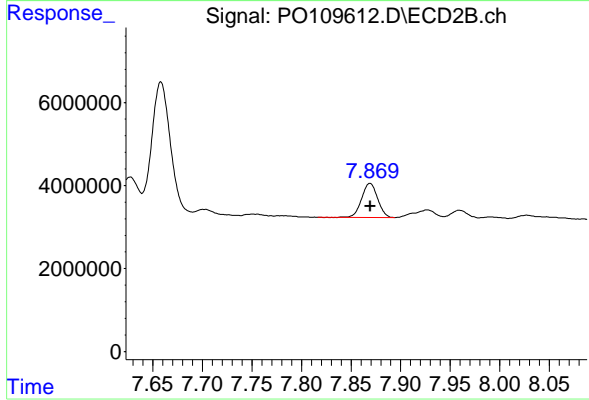
#42 AR-1268-2

R.T.: 7.658 min  
 Delta R.T.: -0.003 min  
 Response: 42344949  
 Conc: 80.67 ng/ml



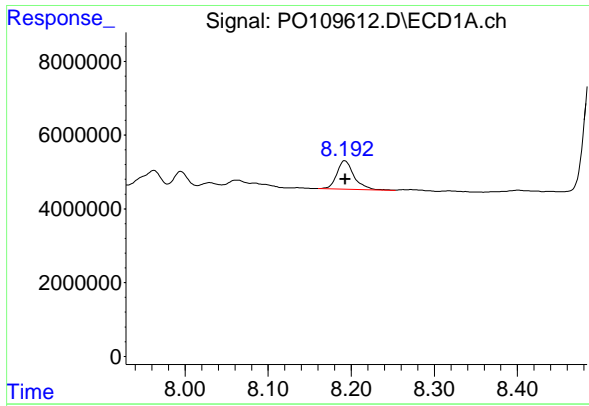
#43 AR-1268-3

R.T.: 7.905 min  
 Delta R.T.: 0.000 min  
 Response: 19712968  
 Conc: 19.36 ng/ml



#43 AR-1268-3

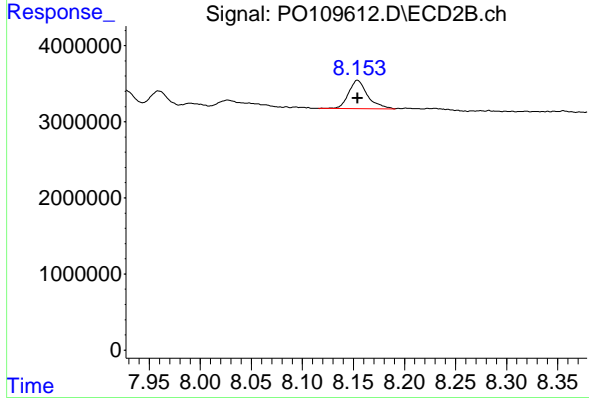
R.T.: 7.869 min  
 Delta R.T.: 0.000 min  
 Response: 9205119  
 Conc: 21.51 ng/ml



#44 AR-1268-4

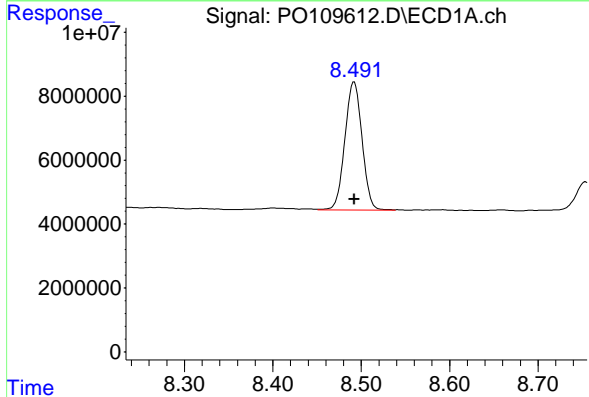
R.T.: 8.192 min  
 Delta R.T.: 0.000 min  
 Response: 11168695  
 Conc: 26.29 ng/ml

Instrument :  
 ECD\_O  
 ClientSampleId :  
 K084-10ADL2



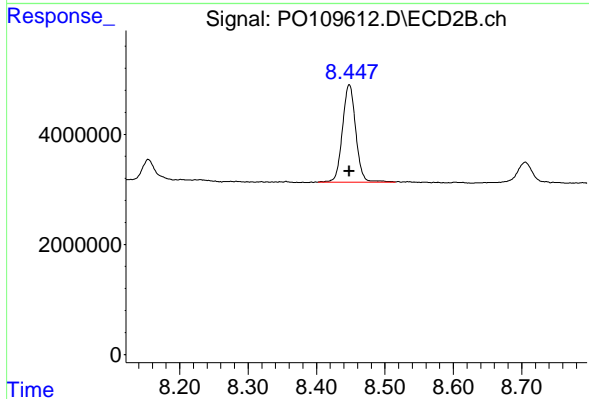
#44 AR-1268-4

R.T.: 8.154 min  
 Delta R.T.: 0.000 min  
 Response: 4834051  
 Conc: 29.96 ng/ml



#45 AR-1268-5

R.T.: 8.492 min  
 Delta R.T.: 0.000 min  
 Response: 54213980  
 Conc: 17.95 ng/ml



#45 AR-1268-5

R.T.: 8.448 min  
 Delta R.T.: 0.000 min  
 Response: 23986409  
 Conc: 21.94 ng/ml