

Data Path : Z:\pestpcbsrv\HPCHEM1\ECD\_O\Data\P0022825\  
 Data File : P0109613.D  
 Signal(s) : Signal #1: ECD1A.ch Signal #2: ECD2B.ch  
 Acq On : 28 Feb 2025 22:44  
 Operator : YP/AJ  
 Sample : Q1436-10DL 5X  
 Misc :  
 ALS Vial : 37 Sample Multiplier: 1

**Instrument :**  
 ECD\_O  
**ClientSampleId :**  
 K084-11ADL

**Manual Integrations**  
**APPROVED**  
 Reviewed By :Yogesh Patel 03/03/2025  
 Supervised By :Ankita Jodhani 03/04/2025

Integration File signal 1: autoint1.e  
 Integration File signal 2: autoint2.e  
 Quant Time: Mar 01 00:33:25 2025  
 Quant Method : Z:\pestpcbsrv\HPCHEM1\ECD\_O\methods\P0022025.M  
 Quant Title : GC EXTRACTABLES  
 QLast Update : Fri Feb 21 04:40:23 2025  
 Response via : Initial Calibration  
 Integrator: ChemStation

Volume Inj. : 2 µl  
 Signal #1 Phase : ZB-MR1 Signal #2 Phase: ZB-MR2  
 Signal #1 Info : 30Mx0.32mmx 0.50µ Signal #2 Info : 30M x 0.32mm x 0.25µm

Compound	RT#1	RT#2	Resp#1	Resp#2	ng/ml	ng/ml
-----						
System Monitoring Compounds						
1) SA Tetrachlo...	3.696	3.694	54047374	28992094	5.710m	5.539
2) SA Decachlor...	8.755	8.705	141.8E6	58419780	16.488	18.346
Target Compounds						
26) L6 AR-1254-1	5.600	5.579	2631.8E6	1418.5E6	5104.361	5423.853
27) L6 AR-1254-2	5.750	5.727	3055.1E6	1642.1E6	6783.478	7000.862
28) L6 AR-1254-3	6.156	6.131	6261.2E6	3336.2E6	8745.281	9352.850
29) L6 AR-1254-4	6.384	6.358	3978.0E6	2025.9E6	9498.848	10490.075
30) L6 AR-1254-5	6.805	6.775	11547.0E6	5975.4E6	18507.697	20137.471
41) L9 AR-1268-1	7.632	7.598	460.6E6	209.3E6	347.856	366.302
42) L9 AR-1268-2	7.694	7.660	1074.9E6	494.9E6	889.004	942.749
43) L9 AR-1268-3	7.906	7.871	327.6E6	149.0E6	321.744	348.110
44) L9 AR-1268-4	8.194	8.156	155.4E6	66254389	365.722	410.663
45) L9 AR-1268-5	8.492	8.449	937.5E6	376.1E6	310.458	344.040
-----						

(f)=RT Delta > 1/2 Window (#)=Amounts differ by > 25% (m)=manual int.

Data Path : Z:\pestpcbsrv\HPCHEM1\ECD\_O\Data\PO022825\  
 Data File : PO109613.D  
 Signal(s) : Signal #1: ECD1A.ch Signal #2: ECD2B.ch  
 Acq On : 28 Feb 2025 22:44  
 Operator : YP/AJ  
 Sample : Q1436-10DL 5X  
 Misc :  
 ALS Vial : 37 Sample Multiplier: 1

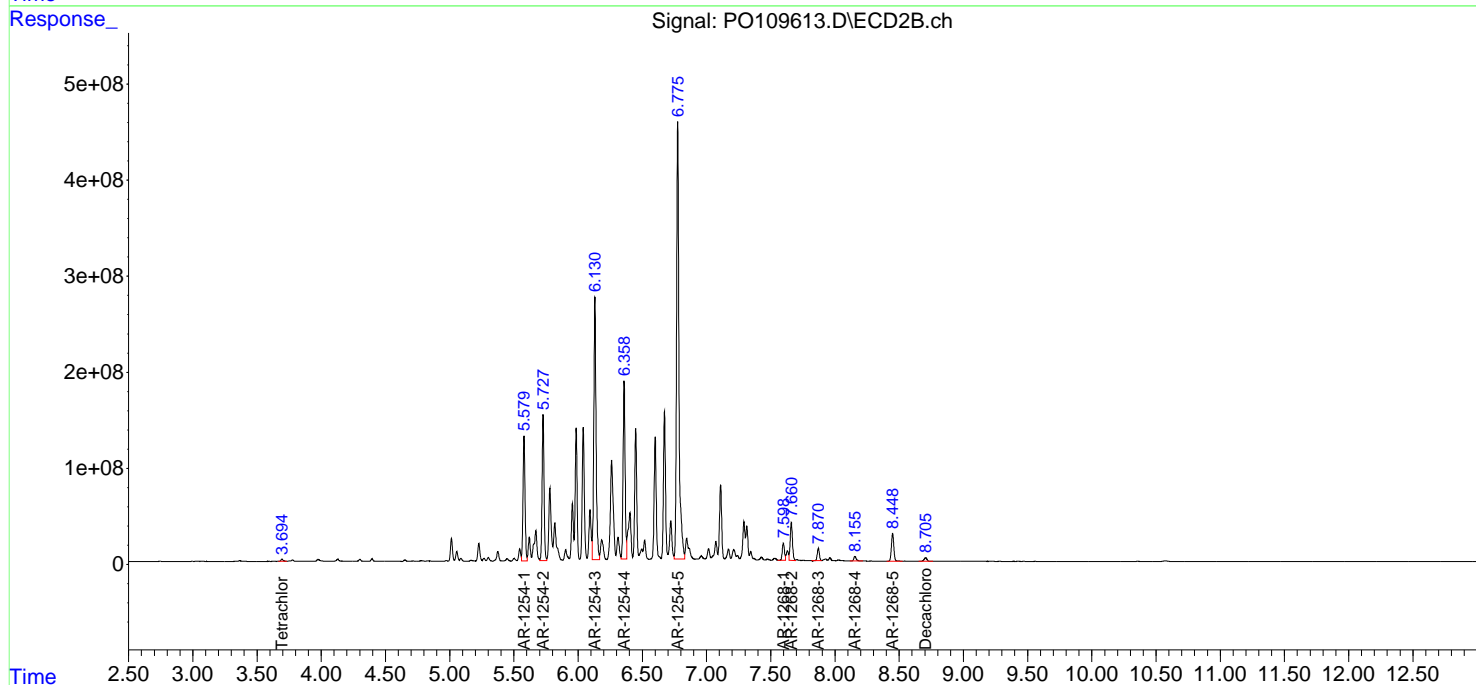
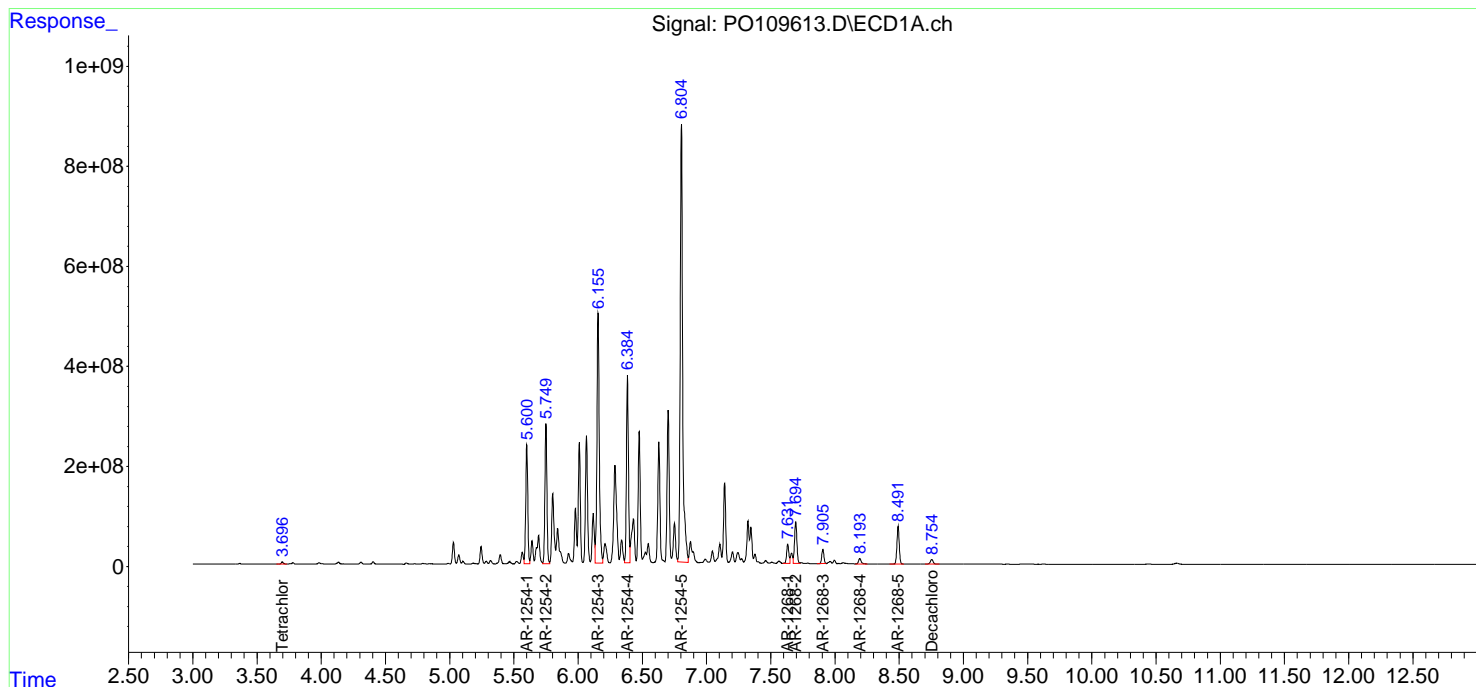
Instrument :  
 ECD\_O  
 ClientSampleId :  
 K084-11ADL

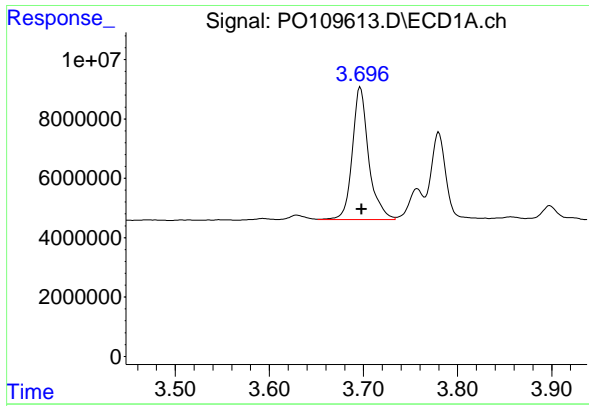
Manual Integrations  
 APPROVED

Reviewed By :Yogesh Patel 03/03/2025  
 Supervised By :Ankita Jodhani 03/04/2025

Integration File signal 1: autoint1.e  
 Integration File signal 2: autoint2.e  
 Quant Time: Mar 01 00:33:25 2025  
 Quant Method : Z:\pestpcbsrv\HPCHEM1\ECD\_O\methods\PO022025.M  
 Quant Title : GC EXTRACTABLES  
 QLast Update : Fri Feb 21 04:40:23 2025  
 Response via : Initial Calibration  
 Integrator: ChemStation

Volume Inj. : 2 µl  
 Signal #1 Phase : ZB-MR1 Signal #2 Phase: ZB-MR2  
 Signal #1 Info : 30Mx0.32mmx 0.50µm Signal #2 Info : 30M x 0.32mm x 0.25µm





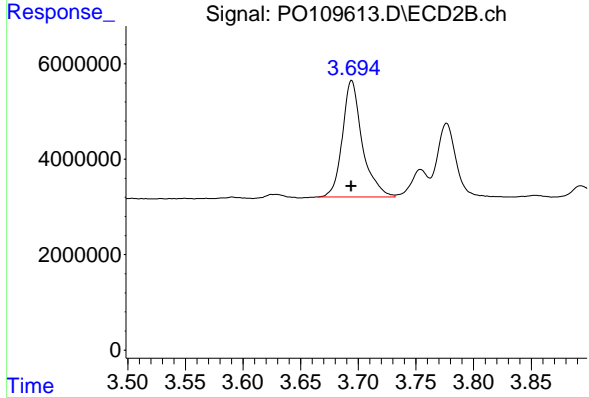
#1 Tetrachloro-m-xylene

R.T.: 3.696 min  
 Delta R.T.: -0.002 min  
 Response: 54047374  
 Conc: 5.71 ng/ml

Instrument :  
 ECD\_O  
 ClientSampleId :  
 K084-11ADL

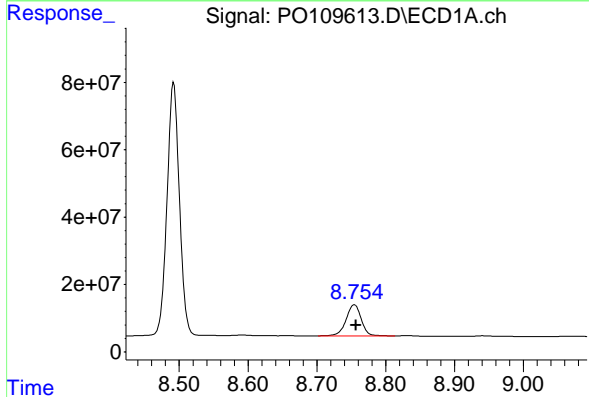
Manual Integrations  
 APPROVED

Reviewed By :Yogesh Patel 03/03/2025  
 Supervised By :Ankita Jodhani 03/04/2025



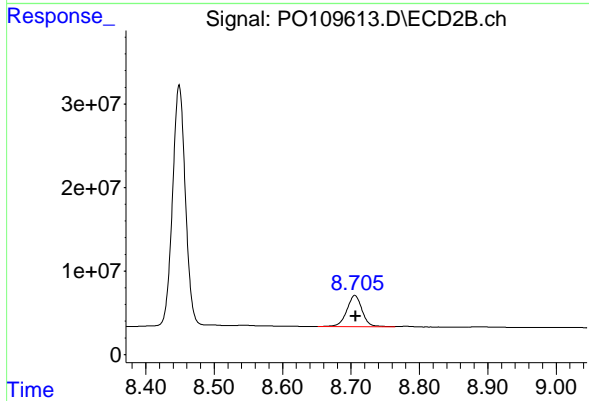
#1 Tetrachloro-m-xylene

R.T.: 3.694 min  
 Delta R.T.: 0.000 min  
 Response: 28992094  
 Conc: 5.54 ng/ml



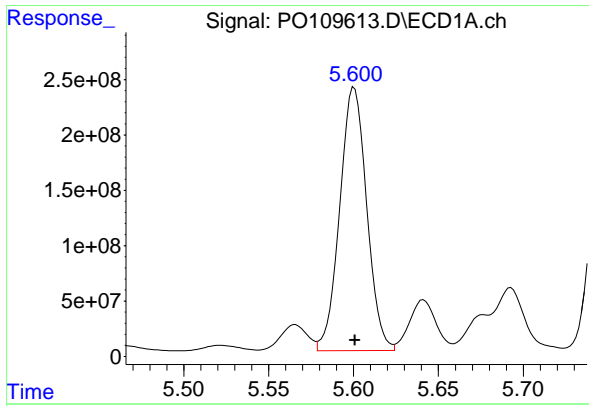
#2 Decachlorobiphenyl

R.T.: 8.755 min  
 Delta R.T.: -0.002 min  
 Response: 141826233  
 Conc: 16.49 ng/ml



#2 Decachlorobiphenyl

R.T.: 8.705 min  
 Delta R.T.: -0.001 min  
 Response: 58419780  
 Conc: 18.35 ng/ml



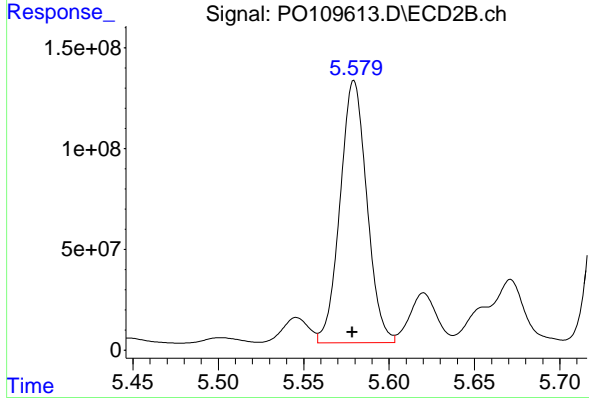
#26 AR-1254-1

R.T.: 5.600 min  
 Delta R.T.: 0.000 min  
 Response: 2631842752  
 Conc: 5104.36 ng/ml

Instrument :  
 ECD\_O  
 ClientSampleId :  
 K084-11ADL

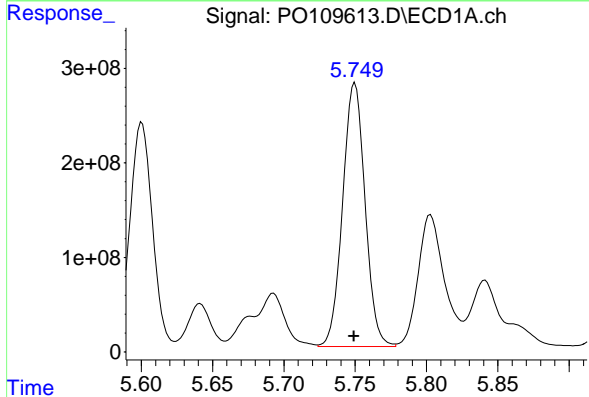
Manual Integrations  
 APPROVED

Reviewed By :Yogesh Patel 03/03/2025  
 Supervised By :Ankita Jodhani 03/04/2025



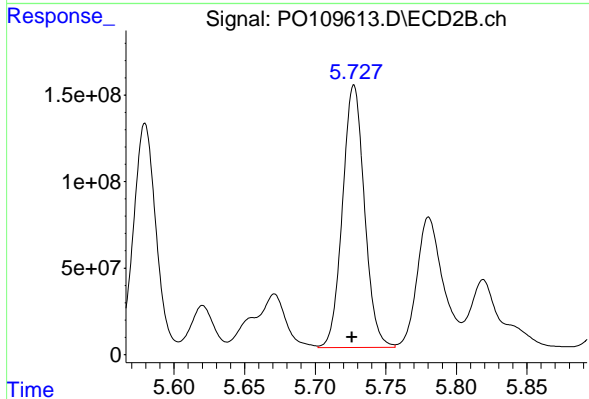
#26 AR-1254-1

R.T.: 5.579 min  
 Delta R.T.: 0.000 min  
 Response: 1418545340  
 Conc: 5423.85 ng/ml



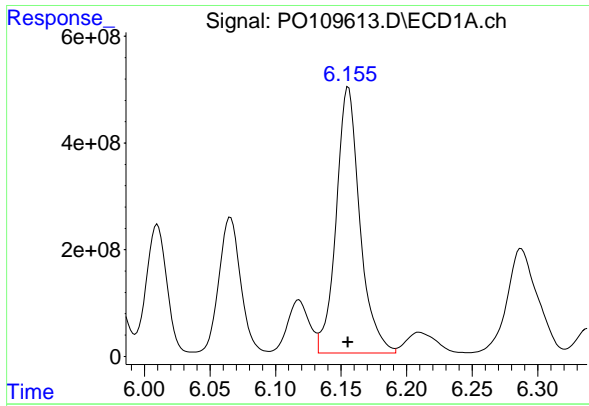
#27 AR-1254-2

R.T.: 5.750 min  
 Delta R.T.: 0.000 min  
 Response: 3055105538  
 Conc: 6783.48 ng/ml



#27 AR-1254-2

R.T.: 5.727 min  
 Delta R.T.: 0.001 min  
 Response: 1642132234  
 Conc: 7000.86 ng/ml



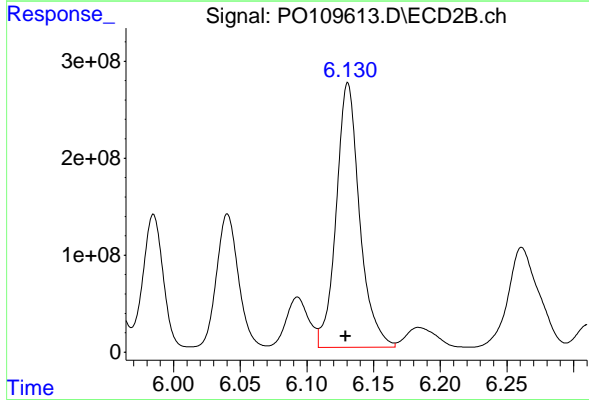
#28 AR-1254-3

R.T.: 6.156 min  
 Delta R.T.: 0.000 min  
 Response: 6261231040  
 Conc: 8745.28 ng/ml

Instrument :  
 ECD\_O  
 ClientSampleId :  
 K084-11ADL

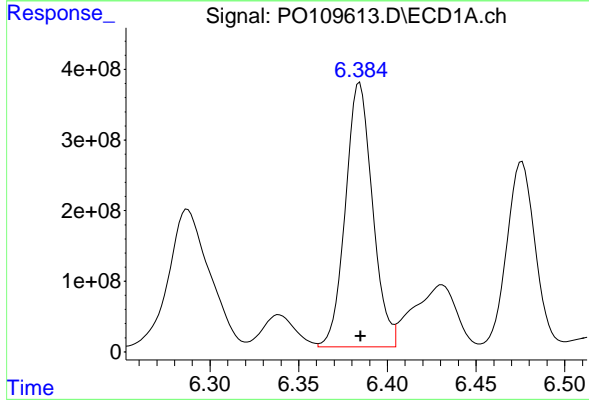
Manual Integrations  
 APPROVED

Reviewed By :Yogesh Patel 03/03/2025  
 Supervised By :Ankita Jodhani 03/04/2025



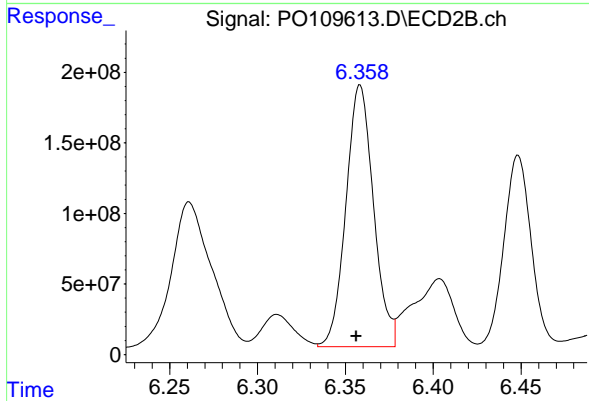
#28 AR-1254-3

R.T.: 6.131 min  
 Delta R.T.: 0.002 min  
 Response: 3336204326  
 Conc: 9352.85 ng/ml



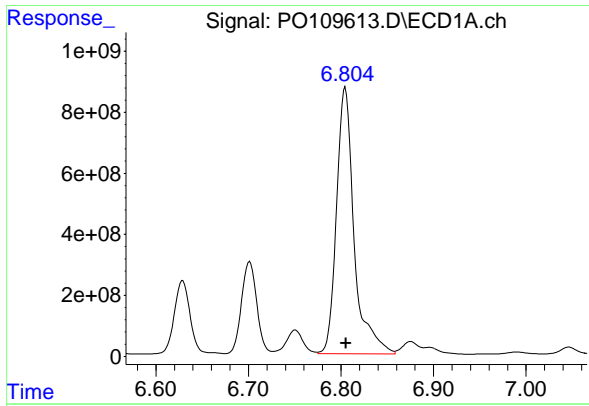
#29 AR-1254-4

R.T.: 6.384 min  
 Delta R.T.: 0.000 min  
 Response: 3978036932  
 Conc: 9498.85 ng/ml



#29 AR-1254-4

R.T.: 6.358 min  
 Delta R.T.: 0.002 min  
 Response: 2025879009  
 Conc: 10490.07 ng/ml



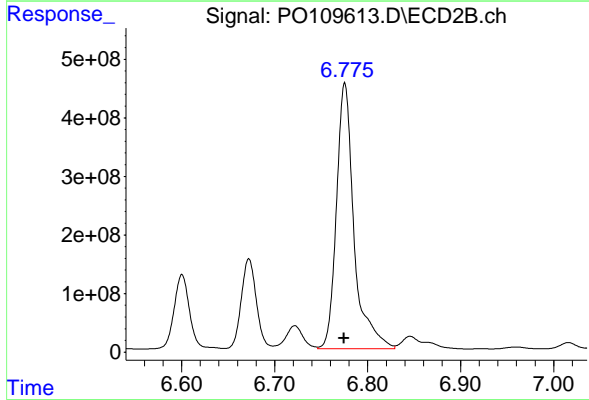
#30 AR-1254-5

R.T.: 6.805 min  
 Delta R.T.: 0.000 min  
 Response: 11547006827  
 Conc: 18507.70 ng/ml

Instrument :  
 ECD\_O  
 ClientSampleId :  
 K084-11ADL

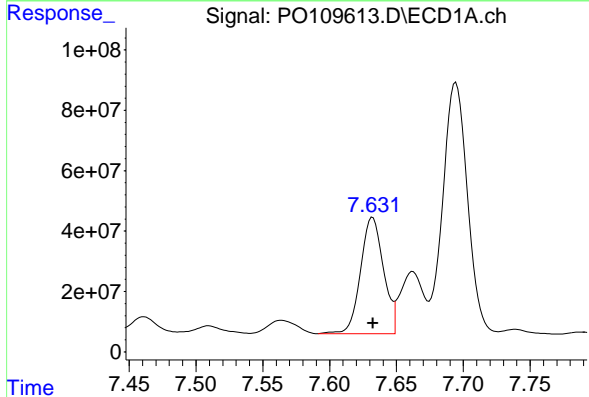
Manual Integrations  
 APPROVED

Reviewed By :Yogesh Patel 03/03/2025  
 Supervised By :Ankita Jodhani 03/04/2025



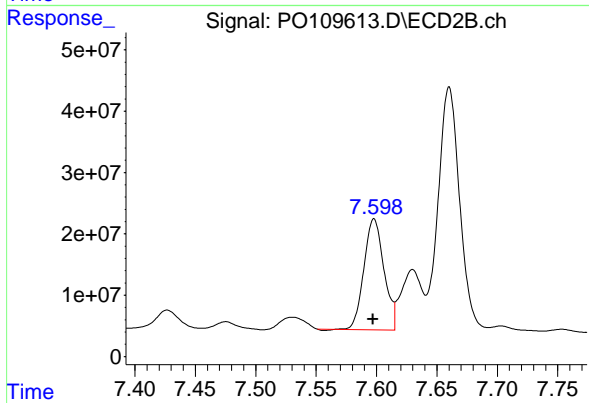
#30 AR-1254-5

R.T.: 6.775 min  
 Delta R.T.: 0.000 min  
 Response: 5975436912  
 Conc: 20137.47 ng/ml



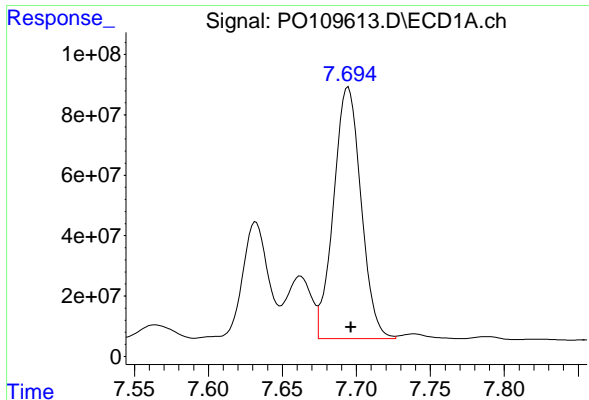
#41 AR-1268-1

R.T.: 7.632 min  
 Delta R.T.: 0.000 min  
 Response: 460637110  
 Conc: 347.86 ng/ml



#41 AR-1268-1

R.T.: 7.598 min  
 Delta R.T.: 0.000 min  
 Response: 209309169  
 Conc: 366.30 ng/ml



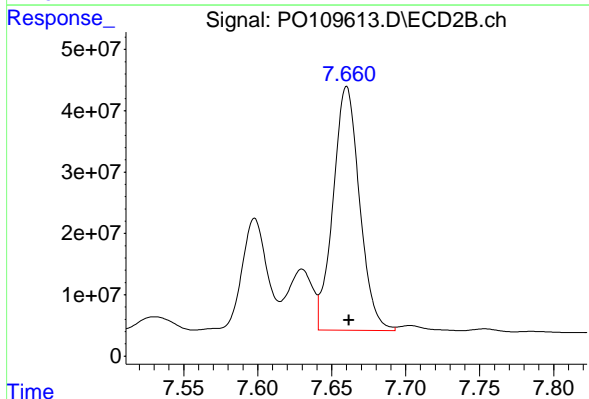
#42 AR-1268-2

R.T.: 7.694 min  
 Delta R.T.: -0.002 min  
 Response: 1074900711  
 Conc: 889.00 ng/ml

Instrument :  
 ECD\_O  
 ClientSampleId :  
 K084-11ADL

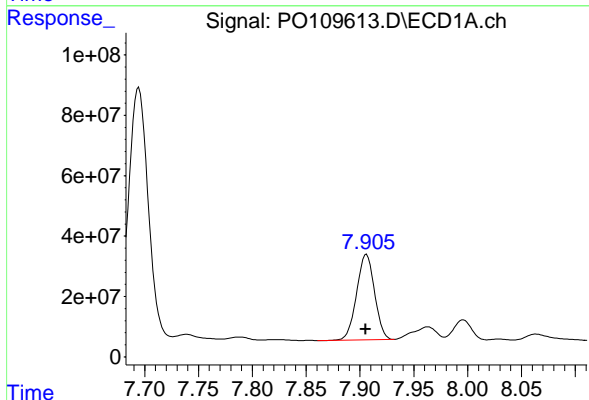
Manual Integrations  
 APPROVED

Reviewed By :Yogesh Patel 03/03/2025  
 Supervised By :Ankita Jodhani 03/04/2025



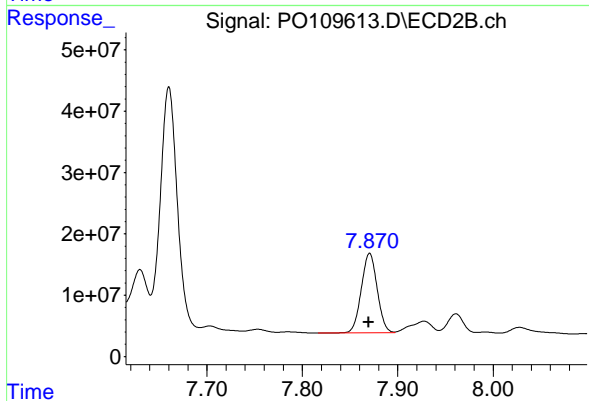
#42 AR-1268-2

R.T.: 7.660 min  
 Delta R.T.: -0.002 min  
 Response: 494890297  
 Conc: 942.75 ng/ml



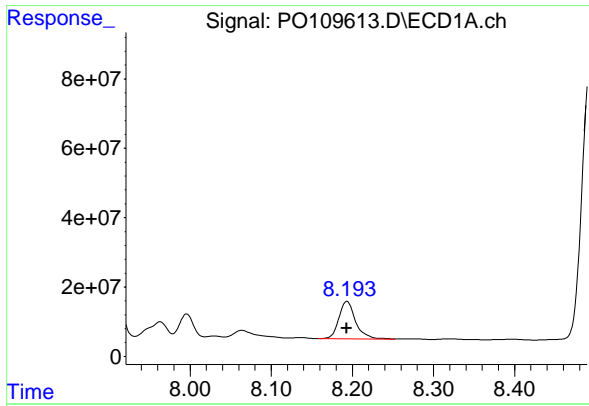
#43 AR-1268-3

R.T.: 7.906 min  
 Delta R.T.: 0.000 min  
 Response: 327592835  
 Conc: 321.74 ng/ml



#43 AR-1268-3

R.T.: 7.871 min  
 Delta R.T.: 0.001 min  
 Response: 149006449  
 Conc: 348.11 ng/ml



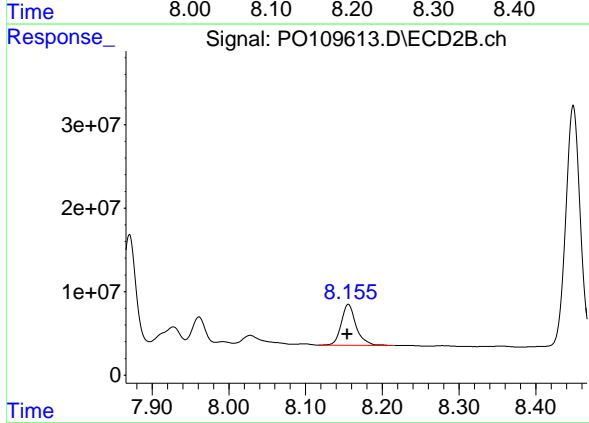
#44 AR-1268-4

R.T.: 8.194 min  
 Delta R.T.: 0.000 min  
 Response: 155380004  
 Conc: 365.72 ng/ml

Instrument :  
 ECD\_O  
 Client Sample Id :  
 K084-11ADL

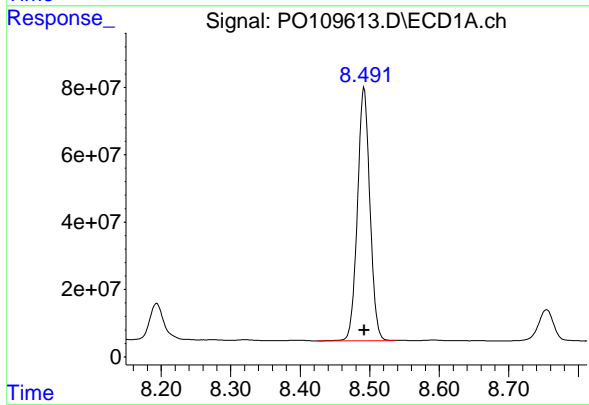
Manual Integrations  
 APPROVED

Reviewed By :Yogesh Patel 03/03/2025  
 Supervised By :Ankita Jodhani 03/04/2025



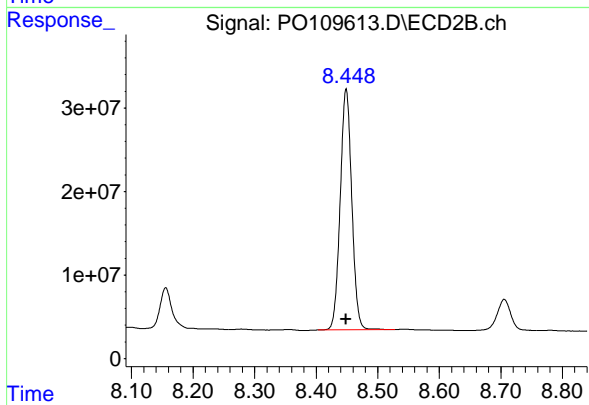
#44 AR-1268-4

R.T.: 8.156 min  
 Delta R.T.: 0.001 min  
 Response: 66254389  
 Conc: 410.66 ng/ml



#45 AR-1268-5

R.T.: 8.492 min  
 Delta R.T.: 0.000 min  
 Response: 937475162  
 Conc: 310.46 ng/ml



#45 AR-1268-5

R.T.: 8.449 min  
 Delta R.T.: 0.000 min  
 Response: 376085504  
 Conc: 344.04 ng/ml