

Data Path : Z:\pestpcbsrv\HPCHEM1\ECD_O\Data\P0022825\
 Data File : P0109614.D
 Signal(s) : Signal #1: ECD1A.ch Signal #2: ECD2B.ch
 Acq On : 28 Feb 2025 23:02
 Operator : YP/AJ
 Sample : Q1436-10DL2 100X
 Misc :
 ALS Vial : 38 Sample Multiplier: 1

Instrument :
 ECD_O
 ClientSampleId :
 K084-11ADL2

Integration File signal 1: autoint1.e
 Integration File signal 2: autoint2.e
 Quant Time: Mar 01 00:33:48 2025
 Quant Method : Z:\pestpcbsrv\HPCHEM1\ECD_O\methods\P0022025.M
 Quant Title : GC EXTRACTABLES
 QLast Update : Fri Feb 21 04:40:23 2025
 Response via : Initial Calibration
 Integrator: ChemStation

Volume Inj. : 2 µl
 Signal #1 Phase : ZB-MR1 Signal #2 Phase: ZB-MR2
 Signal #1 Info : 30Mx0.32mmx 0.50µ Signal #2 Info : 30M x 0.32mm x 0.25µm

Compound	RT#1	RT#2	Resp#1	Resp#2	ng/ml	ng/ml
----------	------	------	--------	--------	-------	-------

System Monitoring Compounds

Target Compounds

26)	L6	AR-1254-1	5.599	5.579	168.5E6	90201869	326.772	344.890
27)	L6	AR-1254-2	5.749	5.727	194.6E6	104.2E6	432.163	444.338
28)	L6	AR-1254-3	6.154	6.130	379.0E6	197.9E6	529.376	554.933
29)	L6	AR-1254-4	6.384	6.358	233.8E6	117.4E6	558.233	608.010
30)	L6	AR-1254-5	6.805	6.775	638.9E6	324.0E6	1024.047	1091.952
41)	L9	AR-1268-1	7.631	7.597	33296800	14878481	25.144	26.038
42)	L9	AR-1268-2	7.693	7.659	75704818	32320056	62.612	61.569
43)	L9	AR-1268-3	7.905	7.870	22761524	10695529	22.355	24.987
44)	L9	AR-1268-4	8.192	8.154	11131473	4499342	26.200	27.888
45)	L9	AR-1268-5	8.492	8.447	61525326	26606113	20.375	24.339

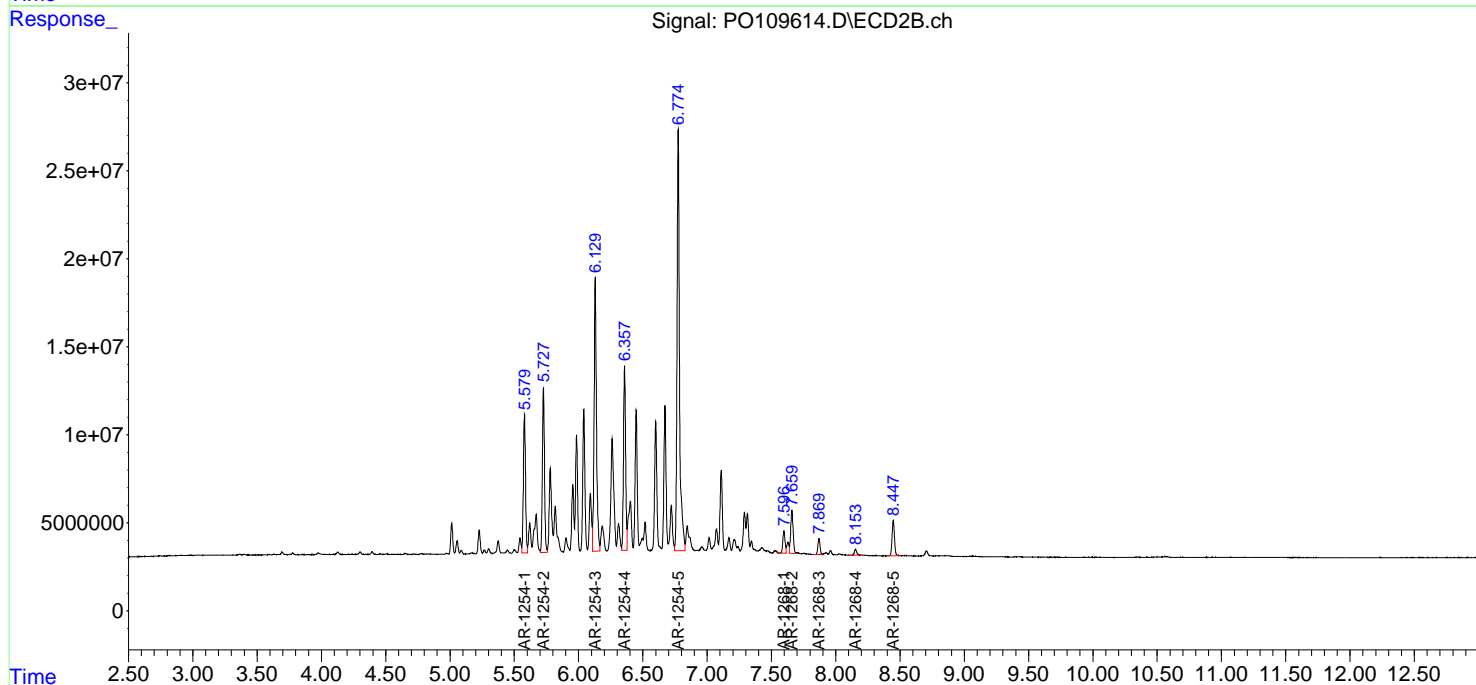
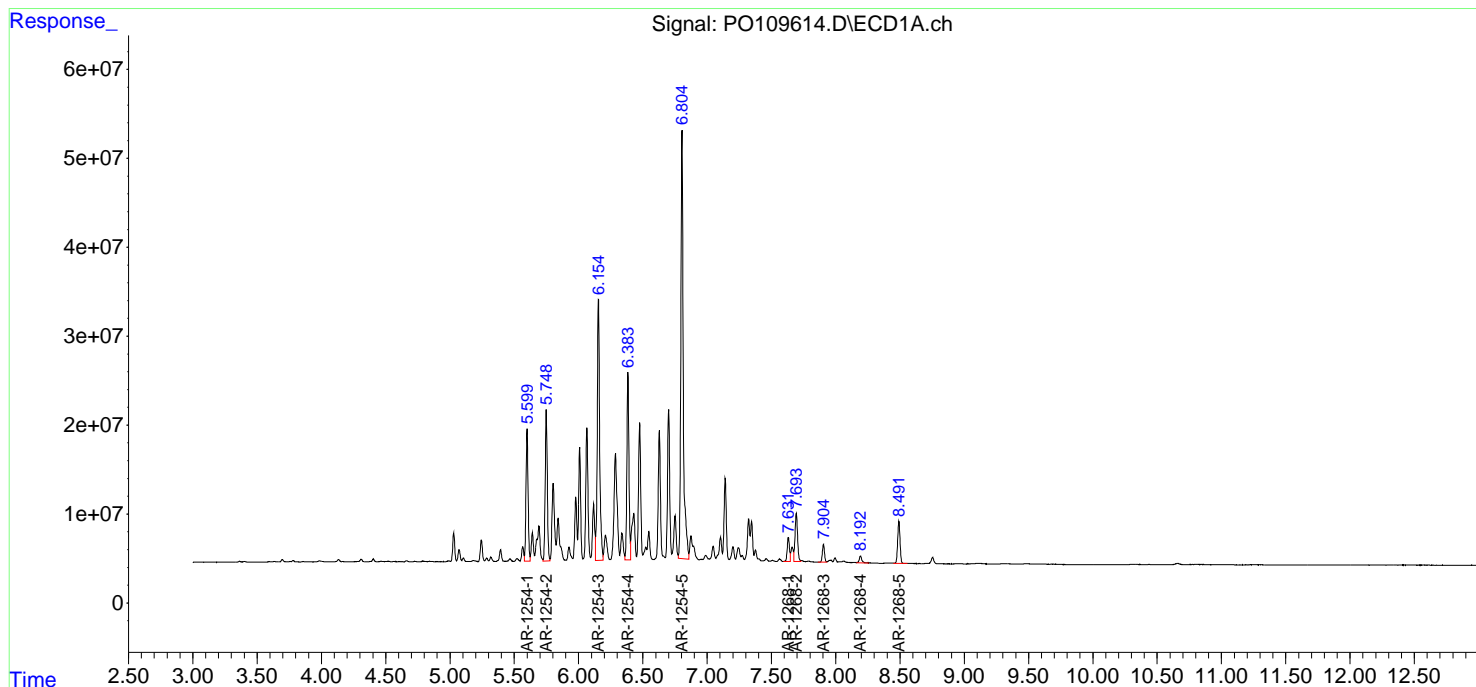
(f)=RT Delta > 1/2 Window (#)=Amounts differ by > 25% (m)=manual int.

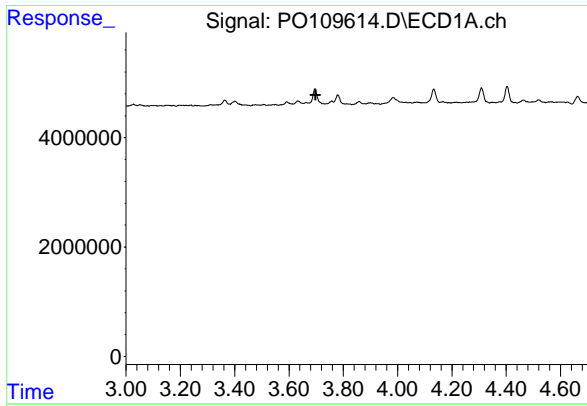
Data Path : Z:\pestpcbsrv\HPCHEM1\ECD_O\Data\PO022825\
Data File : PO109614.D
Signal(s) : Signal #1: ECD1A.ch Signal #2: ECD2B.ch
Acq On : 28 Feb 2025 23:02
Operator : YP/AJ
Sample : Q1436-10DL2 100X
Misc :
ALS Vial : 38 Sample Multiplier: 1

Instrument :
ECD_O
ClientSampleId :
K084-11ADL2

Integration File signal 1: autoint1.e
Integration File signal 2: autoint2.e
Quant Time: Mar 01 00:33:48 2025
Quant Method : Z:\pestpcbsrv\HPCHEM1\ECD_O\methods\PO022025.M
Quant Title : GC EXTRACTABLES
QLast Update : Fri Feb 21 04:40:23 2025
Response via : Initial Calibration
Integrator: ChemStation

Volume Inj. : 2 µl
Signal #1 Phase : ZB-MR1 Signal #2 Phase: ZB-MR2
Signal #1 Info : 30Mx0.32mmx 0.50µ Signal #2 Info : 30M x 0.32mm x 0.25µm

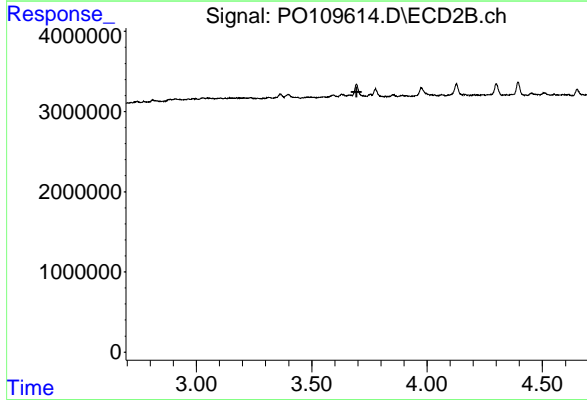




#1 Tetrachloro-m-xylene

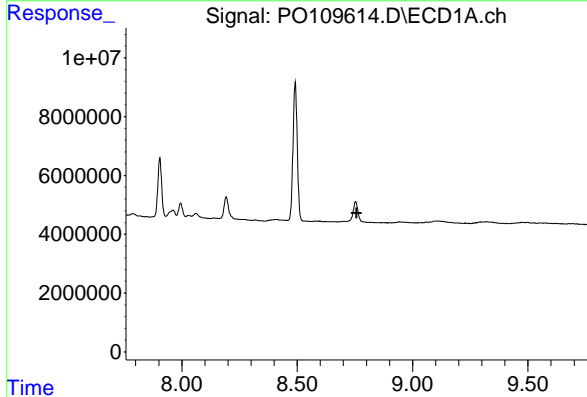
R.T.: 0.000 min
 Exp R.T. : 3.698 min
 Response: 0
 Conc: N.D.

Instrument :
 ECD_O
 ClientSampleId :
 K084-11ADL2



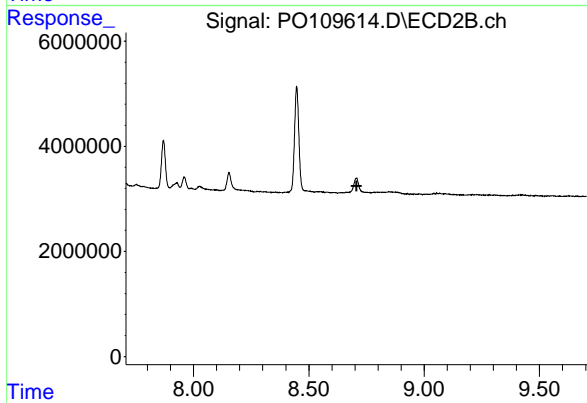
#1 Tetrachloro-m-xylene

R.T.: 0.000 min
 Exp R.T. : 3.694 min
 Response: 0
 Conc: N.D.



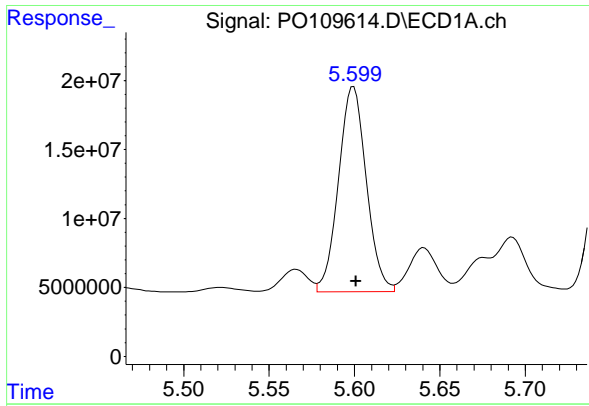
#2 Decachlorobiphenyl

R.T.: 0.000 min
 Exp R.T. : 8.757 min
 Response: 0
 Conc: N.D.



#2 Decachlorobiphenyl

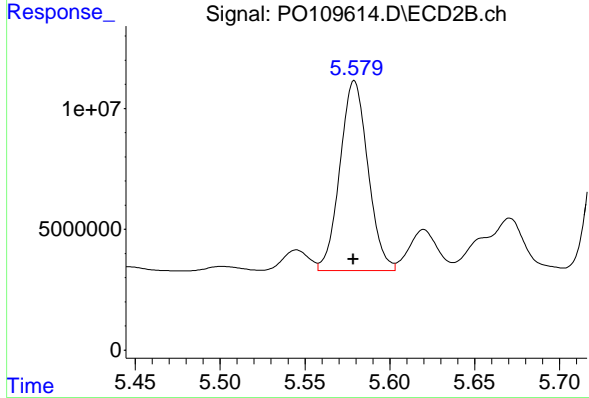
R.T.: 0.000 min
 Exp R.T. : 8.707 min
 Response: 0
 Conc: N.D.



#26 AR-1254-1

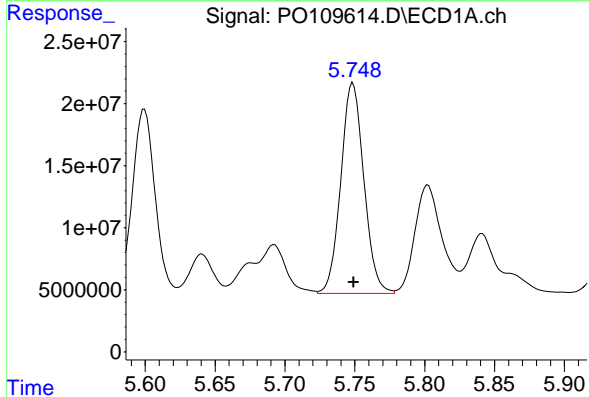
R.T.: 5.599 min
 Delta R.T.: -0.001 min
 Response: 168485793
 Conc: 326.77 ng/ml

Instrument :
 ECD_O
 ClientSampleId :
 K084-11ADL2



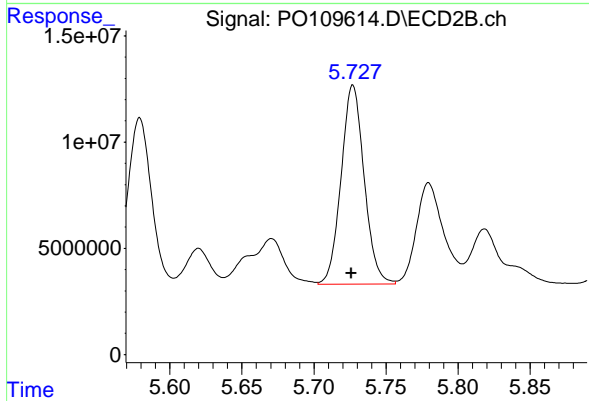
#26 AR-1254-1

R.T.: 5.579 min
 Delta R.T.: 0.000 min
 Response: 90201869
 Conc: 344.89 ng/ml



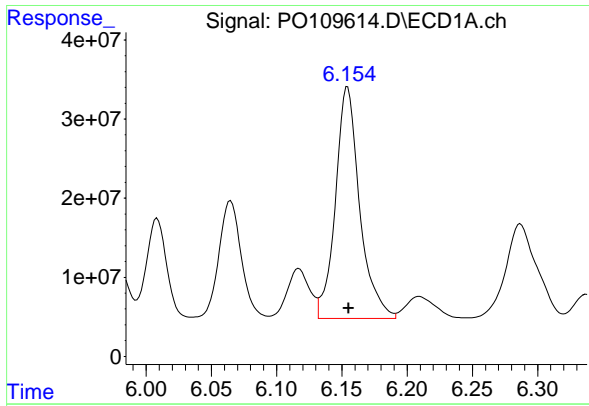
#27 AR-1254-2

R.T.: 5.749 min
 Delta R.T.: 0.000 min
 Response: 194634996
 Conc: 432.16 ng/ml



#27 AR-1254-2

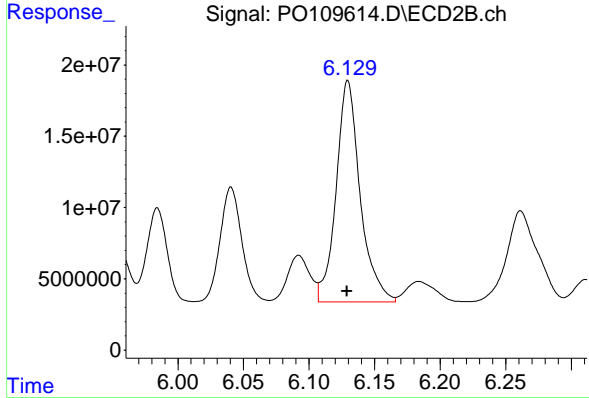
R.T.: 5.727 min
 Delta R.T.: 0.001 min
 Response: 104224470
 Conc: 444.34 ng/ml



#28 AR-1254-3

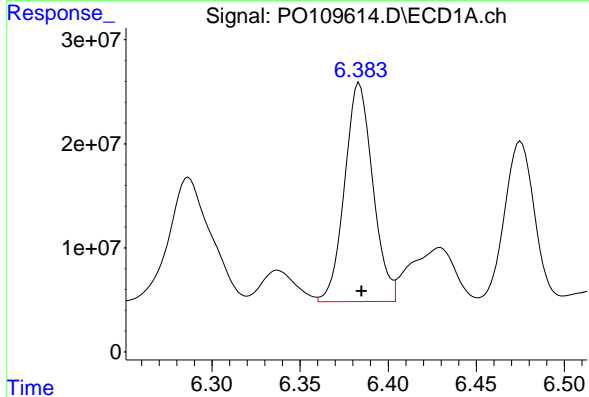
R.T.: 6.154 min
 Delta R.T.: 0.000 min
 Response: 379009846
 Conc: 529.38 ng/ml

Instrument :
 ECD_O
 ClientSampleId :
 K084-11ADL2



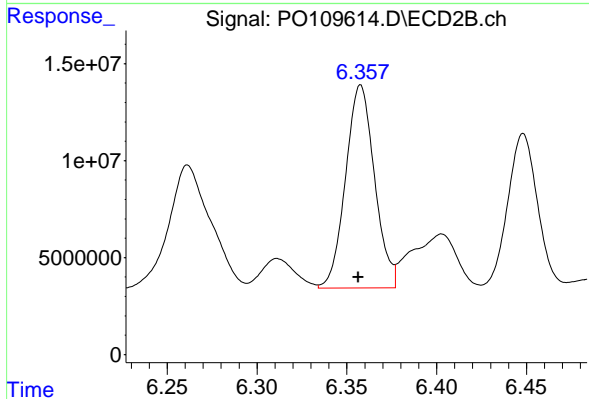
#28 AR-1254-3

R.T.: 6.130 min
 Delta R.T.: 0.000 min
 Response: 197947241
 Conc: 554.93 ng/ml



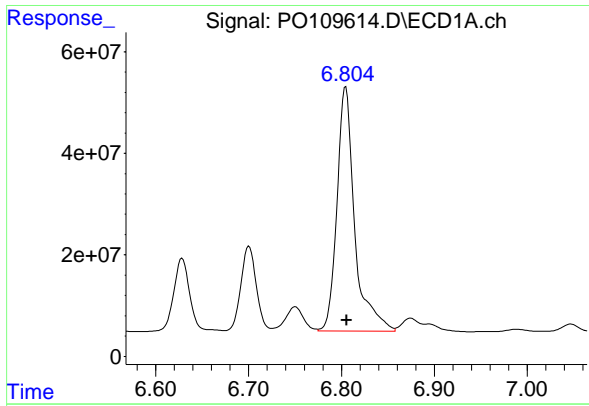
#29 AR-1254-4

R.T.: 6.384 min
 Delta R.T.: -0.001 min
 Response: 233783125
 Conc: 558.23 ng/ml



#29 AR-1254-4

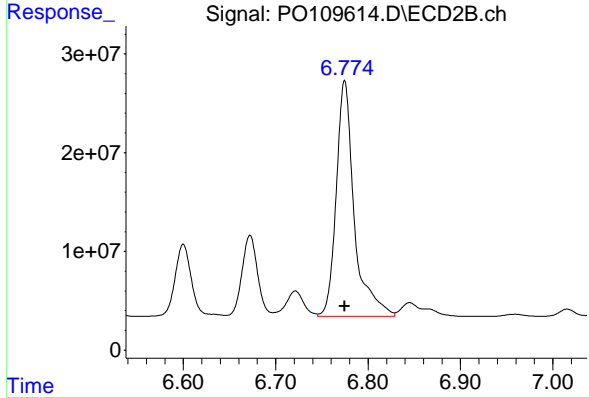
R.T.: 6.358 min
 Delta R.T.: 0.001 min
 Response: 117421037
 Conc: 608.01 ng/ml



#30 AR-1254-5

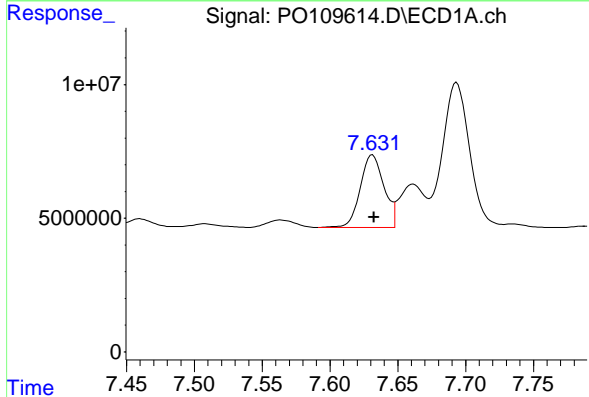
R.T.: 6.805 min
 Delta R.T.: 0.000 min
 Response: 638906232
 Conc: 1024.05 ng/ml

Instrument :
 ECD_O
 ClientSampleId :
 K084-11ADL2



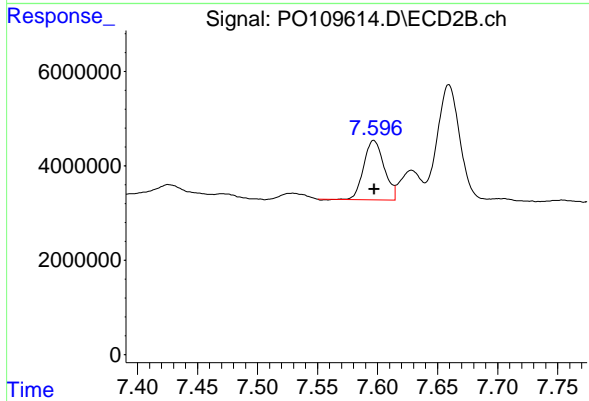
#30 AR-1254-5

R.T.: 6.775 min
 Delta R.T.: 0.000 min
 Response: 324017274
 Conc: 1091.95 ng/ml



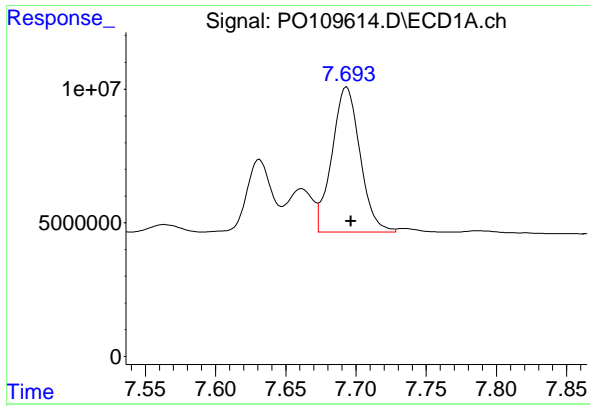
#41 AR-1268-1

R.T.: 7.631 min
 Delta R.T.: -0.001 min
 Response: 33296800
 Conc: 25.14 ng/ml



#41 AR-1268-1

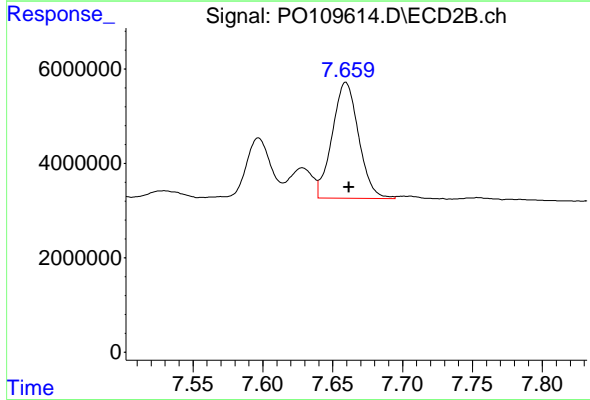
R.T.: 7.597 min
 Delta R.T.: 0.000 min
 Response: 14878481
 Conc: 26.04 ng/ml



#42 AR-1268-2

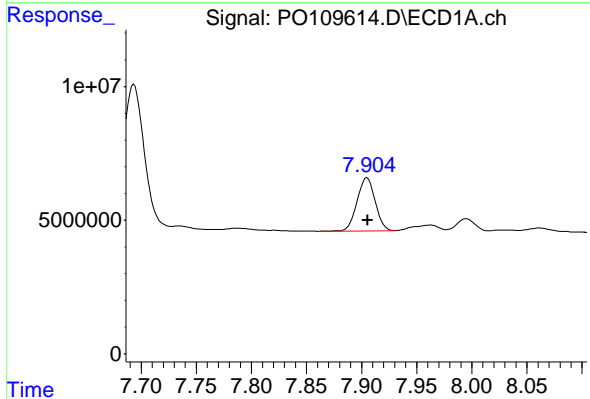
R.T.: 7.693 min
 Delta R.T.: -0.003 min
 Response: 75704818
 Conc: 62.61 ng/ml

Instrument :
 ECD_O
 ClientSampleId :
 K084-11ADL2



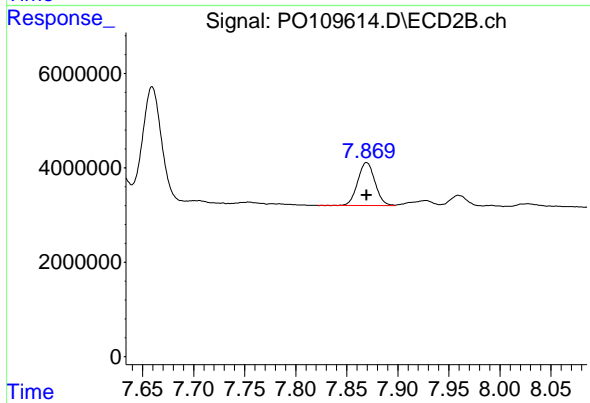
#42 AR-1268-2

R.T.: 7.659 min
 Delta R.T.: -0.002 min
 Response: 32320056
 Conc: 61.57 ng/ml



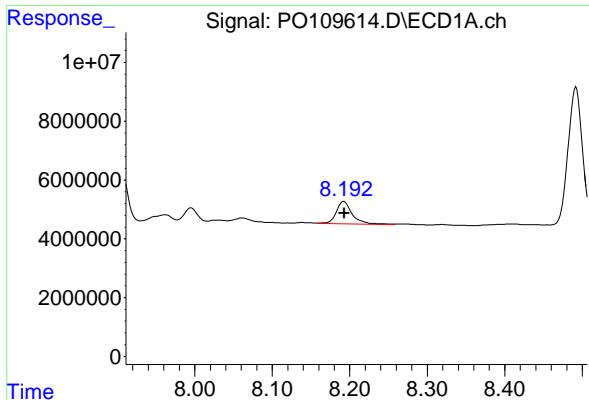
#43 AR-1268-3

R.T.: 7.905 min
 Delta R.T.: 0.000 min
 Response: 22761524
 Conc: 22.36 ng/ml



#43 AR-1268-3

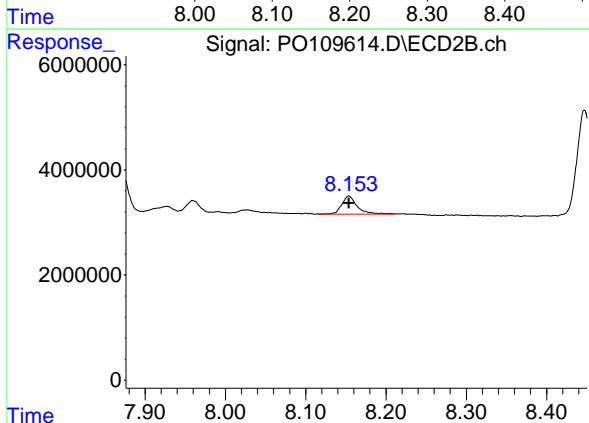
R.T.: 7.870 min
 Delta R.T.: 0.000 min
 Response: 10695529
 Conc: 24.99 ng/ml



#44 AR-1268-4

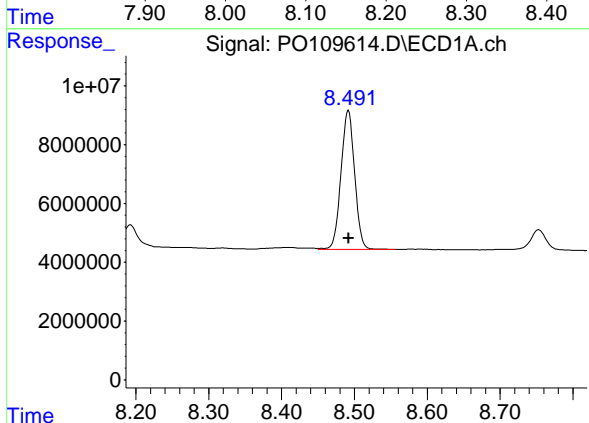
R.T.: 8.192 min
 Delta R.T.: 0.000 min
 Response: 11131473
 Conc: 26.20 ng/ml

Instrument :
 ECD_O
 ClientSampleId :
 K084-11ADL2



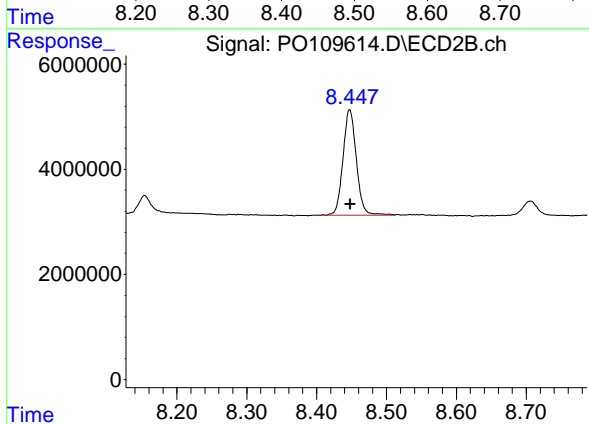
#44 AR-1268-4

R.T.: 8.154 min
 Delta R.T.: 0.000 min
 Response: 4499342
 Conc: 27.89 ng/ml



#45 AR-1268-5

R.T.: 8.492 min
 Delta R.T.: 0.000 min
 Response: 61525326
 Conc: 20.37 ng/ml



#45 AR-1268-5

R.T.: 8.447 min
 Delta R.T.: 0.000 min
 Response: 26606113
 Conc: 24.34 ng/ml