

Data Path : Z:\pestpcbsrv\HPCHEM1\ECD_P\Data\PP030625\
 Data File : PP070320.D
 Signal(s) : Signal #1: ECD1A.ch Signal #2: ECD2B.ch
 Acq On : 06 Mar 2025 18:32
 Operator : YP\AJ
 Sample : Q1436-03
 Misc :
 ALS Vial : 22 Sample Multiplier: 1

Instrument :
 ECD_P
ClientSampleId :
 K084-8C

Manual Integrations
APPROVED

Reviewed By :Yogesh Patel 03/07/2025
 Supervised By :mohammad ahmed 03/08/2025

Integration File signal 1: autoint1.e
 Integration File signal 2: autoint2.e
 Quant Time: Mar 06 23:34:42 2025
 Quant Method : Z:\pestpcbsrv\HPCHEM1\ECD_P\methods\PP022425.M
 Quant Title : GC EXTRACTABLES
 QLast Update : Tue Feb 25 05:10:19 2025
 Response via : Initial Calibration
 Integrator: ChemStation

Volume Inj. : 2 µl
 Signal #1 Phase : ZB-MR1 Signal #2 Phase: ZB-MR2
 Signal #1 Info : 30Mx0.32mmx 0.50µ Signal #2 Info : 30M x 0.32mm x 0.25µm

Compound	RT#1	RT#2	Resp#1	Resp#2	ng/ml	ng/ml

System Monitoring Compounds						
1) SA Tetrachlo...	4.526	3.831	9686205	8874046	6.600	9.282 #
2) SA Decachlor...	10.259	8.886	9253880	8923821	8.124	8.232
Target Compounds						
26) L6 AR-1254-1	6.530	5.726	10511050	7963612	185.379	145.936
27) L6 AR-1254-2	6.746	5.874	19892579	14828011	226.863	304.192 #
28) L6 AR-1254-3	7.109	6.279	25882499	26528172	290.402	349.899
29) L6 AR-1254-4	7.391	6.507	24182854	19771016	324.554	384.201m
30) L6 AR-1254-5	7.810	6.926	55515813	51101595	826.592	756.285
41) L9 AR-1268-1	8.748	7.749	17059987	11774398	88.811m	71.038m
42) L9 AR-1268-2	8.841	7.813	12106551	13693480	73.114	94.411m#
43) L9 AR-1268-3	9.075	8.022	6629365	5238696	46.196	42.777
44) L9 AR-1268-4	9.496	8.316	3483286	4739788	55.247	89.119 #
45) L9 AR-1268-5	9.915	8.620	18307491	15754967	44.017	44.353

(f)=RT Delta > 1/2 Window (#)=Amounts differ by > 25% (m)=manual int.

Data Path : Z:\pestpcbsrv\HPCHEM1\ECD_P\Data\PP030625\
 Data File : PP070320.D
 Signal(s) : Signal #1: ECD1A.ch Signal #2: ECD2B.ch
 Acq On : 06 Mar 2025 18:32
 Operator : YP\AJ
 Sample : Q1436-03
 Misc :
 ALS Vial : 22 Sample Multiplier: 1

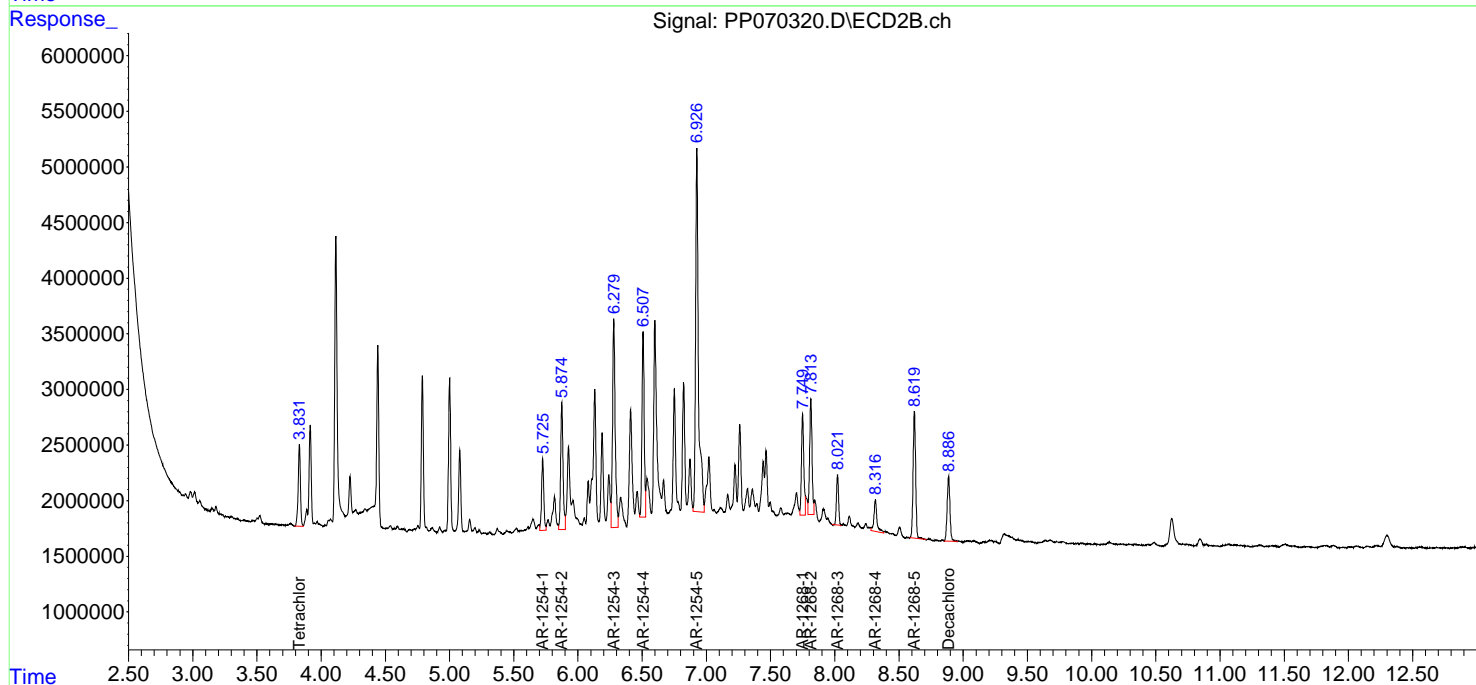
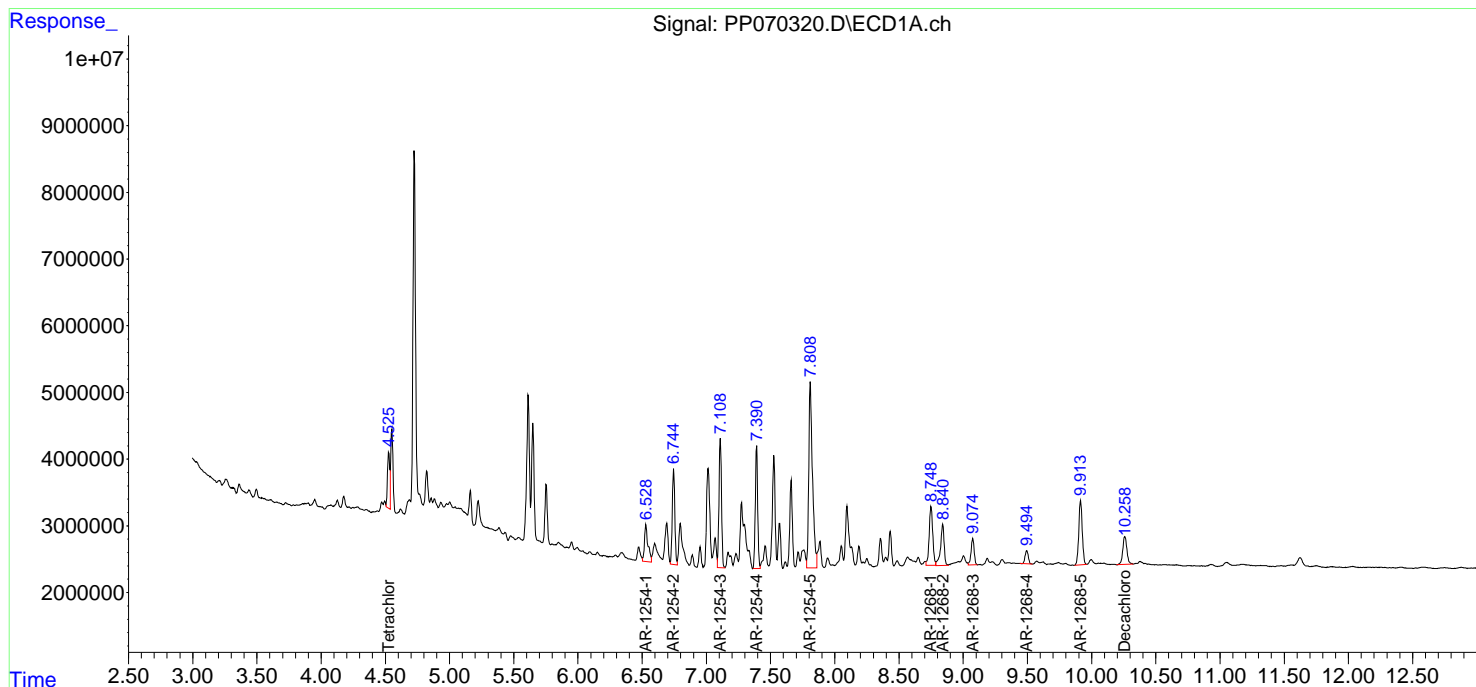
Instrument :
 ECD_P
ClientSampleId :
 K084-8C

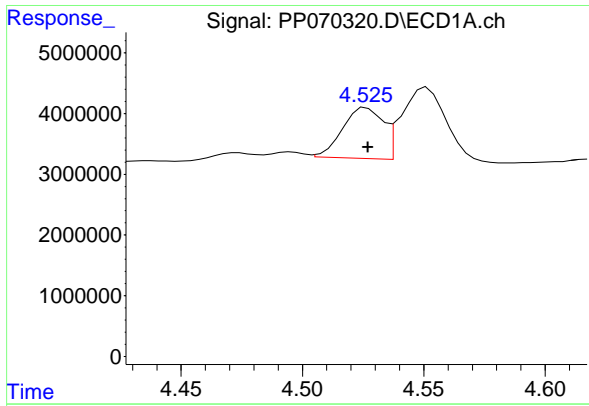
Manual Integrations
APPROVED

Reviewed By :Yogesh Patel 03/07/2025
 Supervised By :mohammad ahmed 03/08/2025

Integration File signal 1: autoint1.e
 Integration File signal 2: autoint2.e
 Quant Time: Mar 06 23:34:42 2025
 Quant Method : Z:\pestpcbsrv\HPCHEM1\ECD_P\methods\PP022425.M
 Quant Title : GC EXTRACTABLES
 QLast Update : Tue Feb 25 05:10:19 2025
 Response via : Initial Calibration
 Integrator: ChemStation

Volume Inj. : 2 µl
 Signal #1 Phase : ZB-MR1 Signal #2 Phase: ZB-MR2
 Signal #1 Info : 30Mx0.32mmx 0.50µ Signal #2 Info : 30M x 0.32mm x 0.25µm





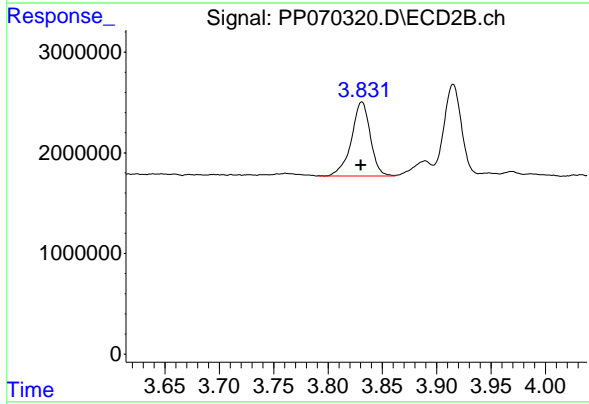
#1 Tetrachloro-m-xylene

R.T.: 4.526 min
 Delta R.T.: 0.000 min
 Response: 9686205
 Conc: 6.60 ng/ml

Instrument : ECD_P
 ClientSampleId : K084-8C

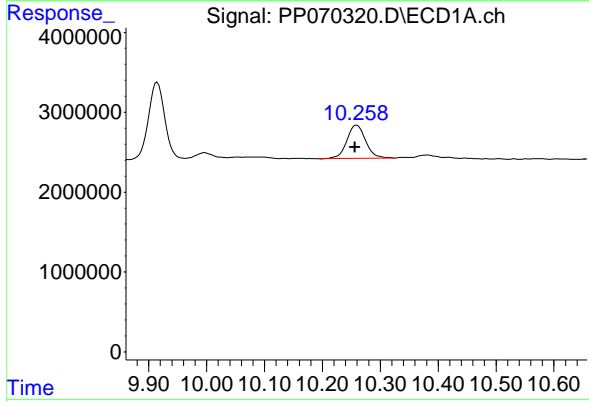
Manual Integrations
 APPROVED

Reviewed By :Yogesh Patel 03/07/2025
 Supervised By :mohammad ahmed 03/08/2025



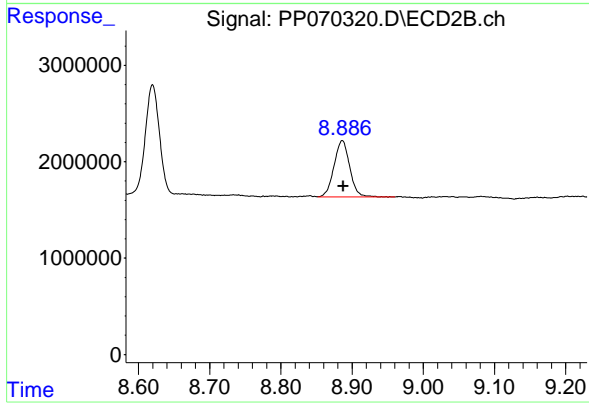
#1 Tetrachloro-m-xylene

R.T.: 3.831 min
 Delta R.T.: 0.000 min
 Response: 8874046
 Conc: 9.28 ng/ml



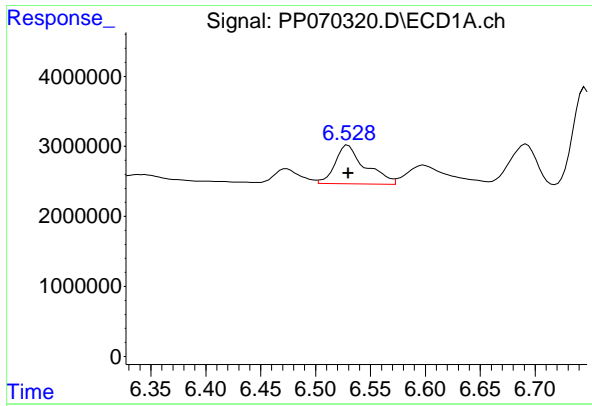
#2 Decachlorobiphenyl

R.T.: 10.259 min
 Delta R.T.: 0.003 min
 Response: 9253880
 Conc: 8.12 ng/ml



#2 Decachlorobiphenyl

R.T.: 8.886 min
 Delta R.T.: -0.002 min
 Response: 8923821
 Conc: 8.23 ng/ml



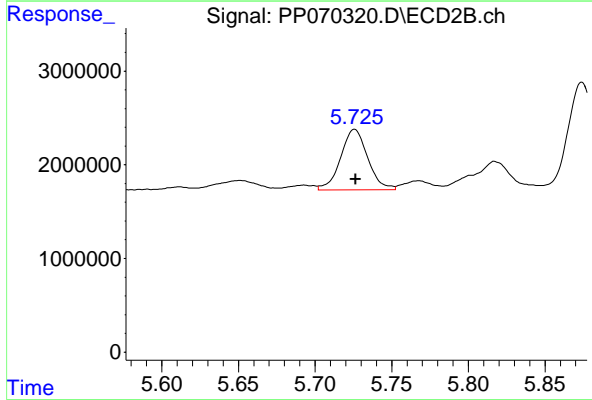
#26 AR-1254-1

R.T.: 6.530 min
 Delta R.T.: 0.000 min
 Response: 10511050
 Conc: 185.38 ng/ml

Instrument :
 ECD_P
 Client Sample Id :
 K084-8C

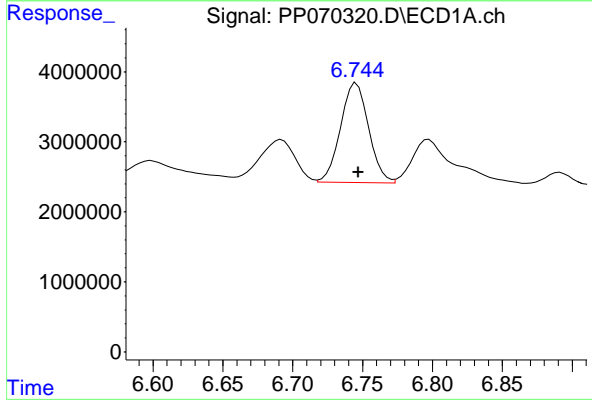
Manual Integrations
 APPROVED

Reviewed By :Yogesh Patel 03/07/2025
 Supervised By :mohammad ahmed 03/08/2025



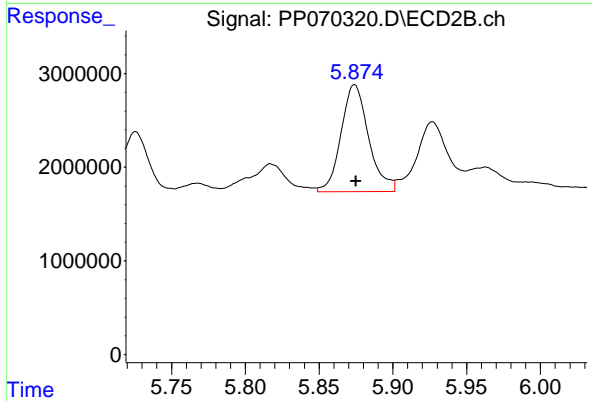
#26 AR-1254-1

R.T.: 5.726 min
 Delta R.T.: 0.000 min
 Response: 7963612
 Conc: 145.94 ng/ml



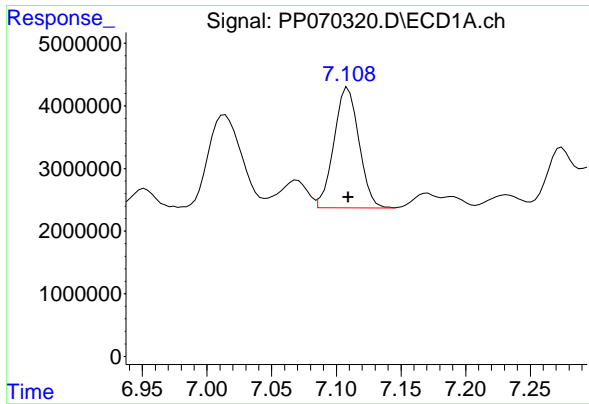
#27 AR-1254-2

R.T.: 6.746 min
 Delta R.T.: -0.001 min
 Response: 19892579
 Conc: 226.86 ng/ml



#27 AR-1254-2

R.T.: 5.874 min
 Delta R.T.: 0.000 min
 Response: 14828011
 Conc: 304.19 ng/ml



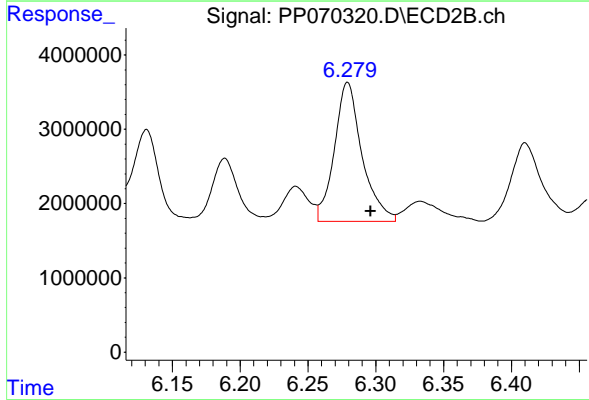
#28 AR-1254-3

R.T.: 7.109 min
 Delta R.T.: 0.000 min
 Response: 25882499
 Conc: 290.40 ng/ml

Instrument :
 ECD_P
 ClientSampleId :
 K084-8C

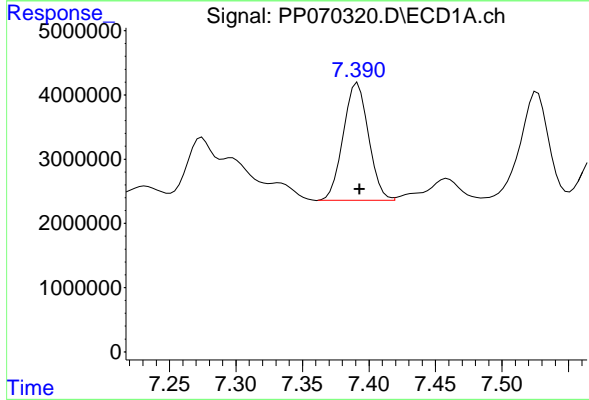
Manual Integrations
 APPROVED

Reviewed By :Yogesh Patel 03/07/2025
 Supervised By :mohammad ahmed 03/08/2025



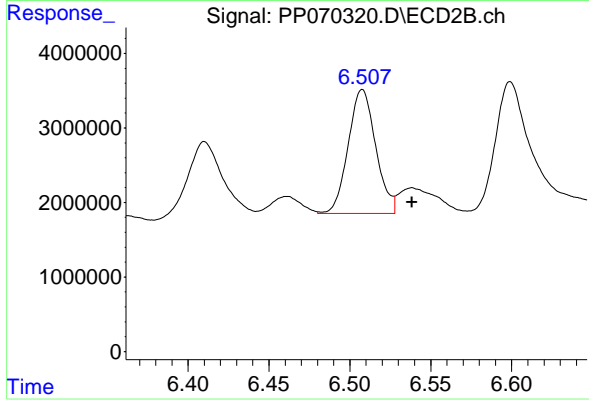
#28 AR-1254-3

R.T.: 6.279 min
 Delta R.T.: -0.017 min
 Response: 26528172
 Conc: 349.90 ng/ml



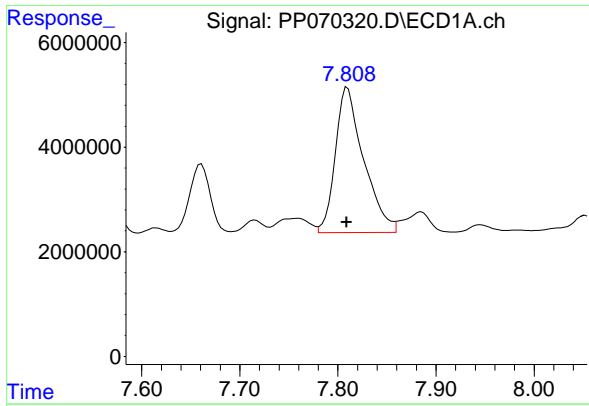
#29 AR-1254-4

R.T.: 7.391 min
 Delta R.T.: -0.002 min
 Response: 24182854
 Conc: 324.55 ng/ml



#29 AR-1254-4

R.T.: 6.507 min
 Delta R.T.: -0.031 min
 Response: 19771016
 Conc: 384.20 ng/ml m



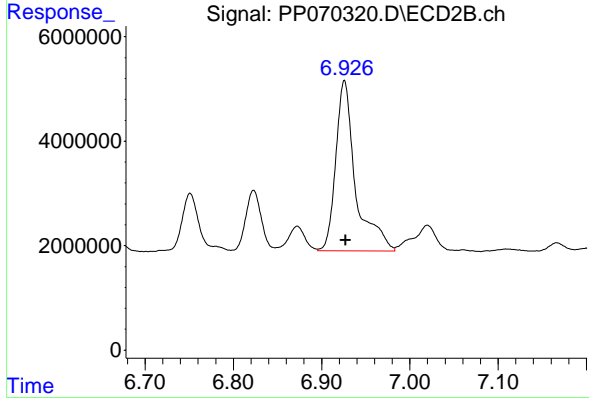
#30 AR-1254-5

R.T.: 7.810 min
 Delta R.T.: 0.001 min
 Response: 55515813
 Conc: 826.59 ng/ml

Instrument : ECD_P
 Client SampleId : K084-8C

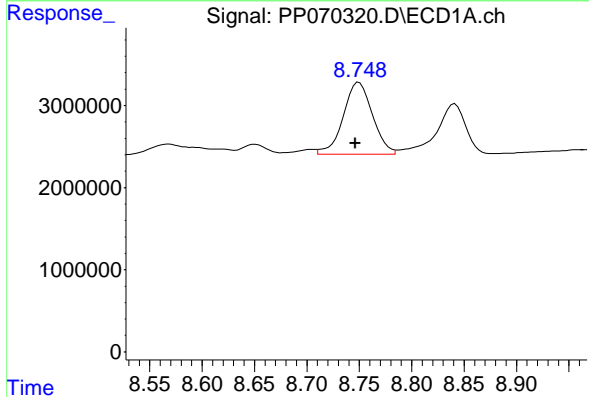
Manual Integrations
 APPROVED

Reviewed By :Yogesh Patel 03/07/2025
 Supervised By :mohammad ahmed 03/08/2025



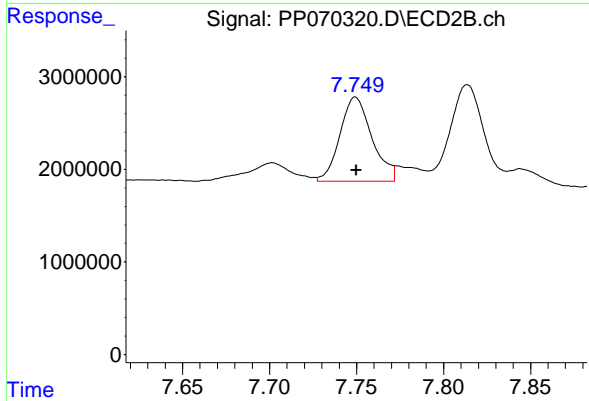
#30 AR-1254-5

R.T.: 6.926 min
 Delta R.T.: -0.001 min
 Response: 51101595
 Conc: 756.29 ng/ml



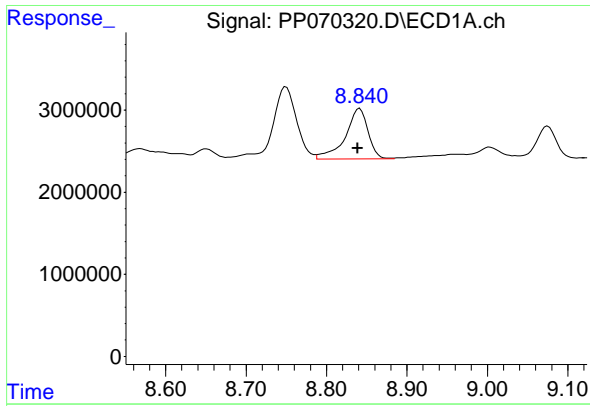
#41 AR-1268-1

R.T.: 8.748 min
 Delta R.T.: 0.002 min
 Response: 17059987
 Conc: 88.81 ng/ml m



#41 AR-1268-1

R.T.: 7.749 min
 Delta R.T.: 0.000 min
 Response: 11774398
 Conc: 71.04 ng/ml m



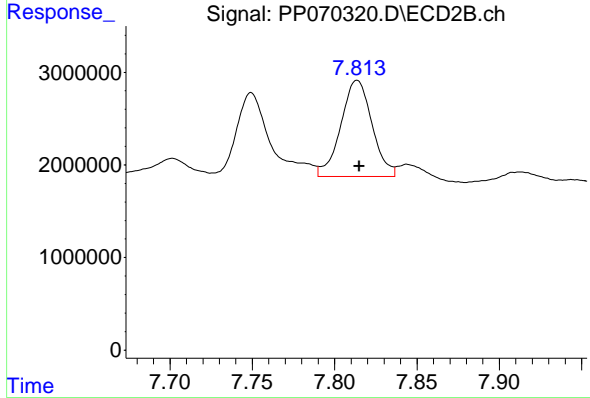
#42 AR-1268-2

R.T.: 8.841 min
 Delta R.T.: 0.002 min
 Response: 12106551
 Conc: 73.11 ng/ml

Instrument :
 ECD_P
 ClientSampleId :
 K084-8C

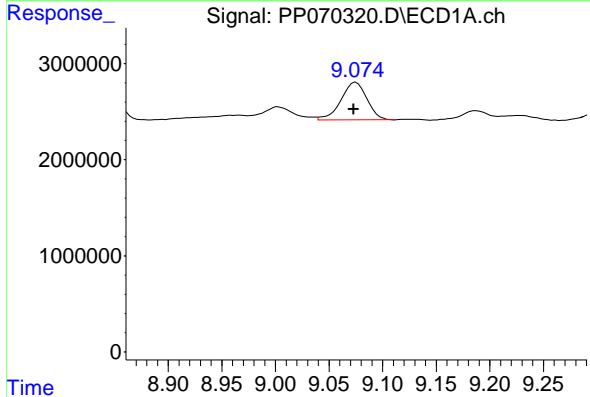
Manual Integrations
 APPROVED

Reviewed By :Yogesh Patel 03/07/2025
 Supervised By :mohammad ahmed 03/08/2025



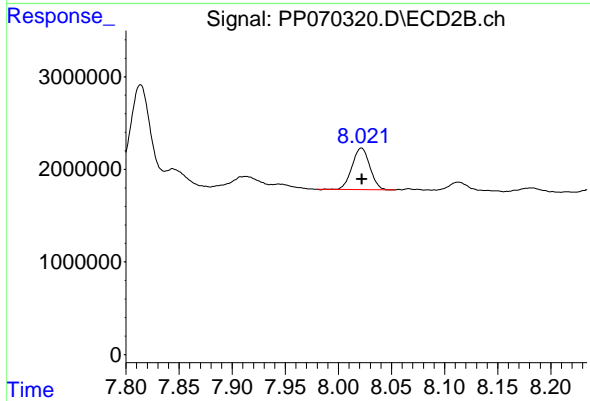
#42 AR-1268-2

R.T.: 7.813 min
 Delta R.T.: -0.002 min
 Response: 13693480
 Conc: 94.41 ng/ml m



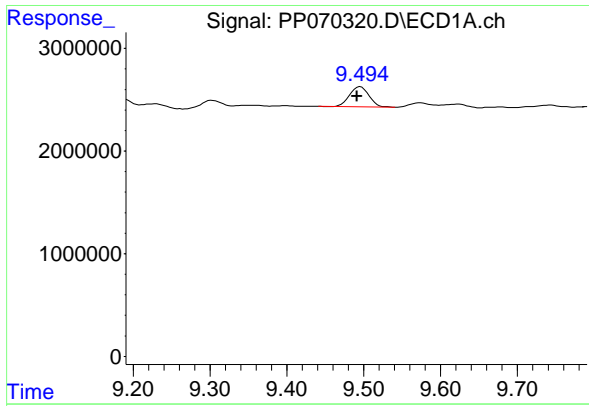
#43 AR-1268-3

R.T.: 9.075 min
 Delta R.T.: 0.002 min
 Response: 6629365
 Conc: 46.20 ng/ml



#43 AR-1268-3

R.T.: 8.022 min
 Delta R.T.: 0.000 min
 Response: 5238696
 Conc: 42.78 ng/ml



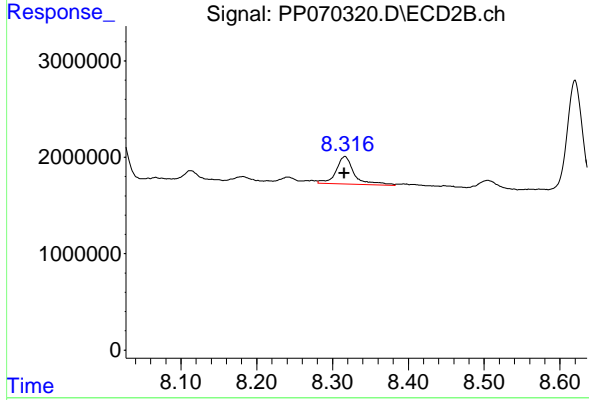
#44 AR-1268-4

R.T.: 9.496 min
 Delta R.T.: 0.004 min
 Response: 3483286
 Conc: 55.25 ng/ml

Instrument : ECD_P
 ClientSampleId : K084-8C

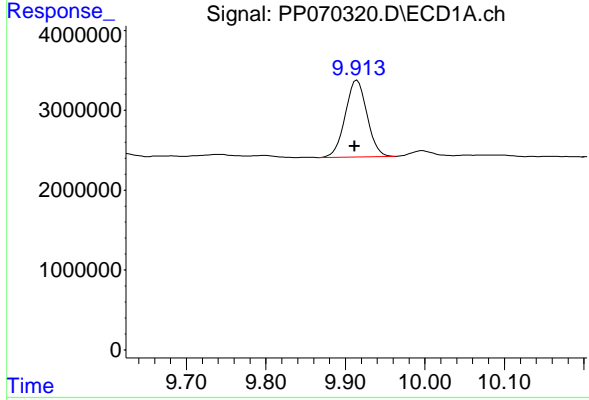
Manual Integrations
 APPROVED

Reviewed By :Yogesh Patel 03/07/2025
 Supervised By :mohammad ahmed 03/08/2025



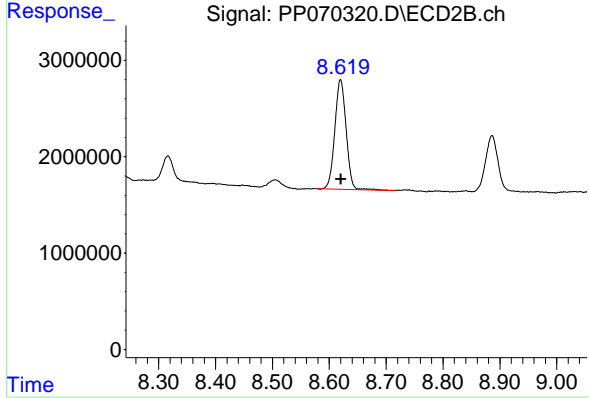
#44 AR-1268-4

R.T.: 8.316 min
 Delta R.T.: 0.000 min
 Response: 4739788
 Conc: 89.12 ng/ml



#45 AR-1268-5

R.T.: 9.915 min
 Delta R.T.: 0.003 min
 Response: 18307491
 Conc: 44.02 ng/ml



#45 AR-1268-5

R.T.: 8.620 min
 Delta R.T.: 0.000 min
 Response: 15754967
 Conc: 44.35 ng/ml