

Data Path : Z:\pestpcbsrv\HPCHEM1\ECD_P\Data\PP030625\
 Data File : PP070321.D
 Signal(s) : Signal #1: ECD1A.ch Signal #2: ECD2B.ch
 Acq On : 06 Mar 2025 18:48
 Operator : YP\AJ
 Sample : Q1436-05
 Misc :
 ALS Vial : 23 Sample Multiplier: 1

Instrument :
 ECD_P
ClientSampleId :
 K084-9B

Manual Integrations
APPROVED

Reviewed By :Yogesh Patel 03/07/2025
 Supervised By :mohammad ahmed 03/08/2025

Integration File signal 1: autoint1.e
 Integration File signal 2: autoint2.e
 Quant Time: Mar 06 23:35:00 2025
 Quant Method : Z:\pestpcbsrv\HPCHEM1\ECD_P\methods\PP022425.M
 Quant Title : GC EXTRACTABLES
 QLast Update : Tue Feb 25 05:10:19 2025
 Response via : Initial Calibration
 Integrator: ChemStation

Volume Inj. : 2 µl
 Signal #1 Phase : ZB-MR1 Signal #2 Phase: ZB-MR2
 Signal #1 Info : 30Mx0.32mmx 0.50µ Signal #2 Info : 30M x 0.32mm x 0.25µm

Compound	RT#1	RT#2	Resp#1	Resp#2	ng/ml	ng/ml

System Monitoring Compounds						
1) SA Tetrachlo...	4.526	3.829	31482386	21276122	21.451	22.255
2) SA Decachlor...	10.260	8.886	15026191	14389296	13.192	13.273
Target Compounds						
26) L6 AR-1254-1	6.529	5.725	27921332	23294080	492.437m	426.871
27) L6 AR-1254-2	6.746	5.874	49592057	33851357	565.567	694.450
28) L6 AR-1254-3	7.110	6.279	67082529	63372363	752.668	835.864
29) L6 AR-1254-4	7.393	6.506	58742947	44330682	788.378	861.459m
30) L6 AR-1254-5	7.821	6.925	151.4E6	133.4E6	2253.986	1974.990
41) L9 AR-1268-1	8.753	7.749	19352721	13329009	100.746	80.417
42) L9 AR-1268-2	8.842	7.813	10633828	18324664	64.220	126.341 #
43) L9 AR-1268-3	9.076	8.021	7727297	6665708	53.847	54.430
44) L9 AR-1268-4	9.496	8.316	3152273	2995153	49.997	56.316
45) L9 AR-1268-5	9.916	8.620	22003969	19313184	52.904	54.370

(f)=RT Delta > 1/2 Window (#)=Amounts differ by > 25% (m)=manual int.

Data Path : Z:\pestpcbsrv\HPCHEM1\ECD_P\Data\PP030625\
 Data File : PP070321.D
 Signal(s) : Signal #1: ECD1A.ch Signal #2: ECD2B.ch
 Acq On : 06 Mar 2025 18:48
 Operator : YP\AJ
 Sample : Q1436-05
 Misc :
 ALS Vial : 23 Sample Multiplier: 1

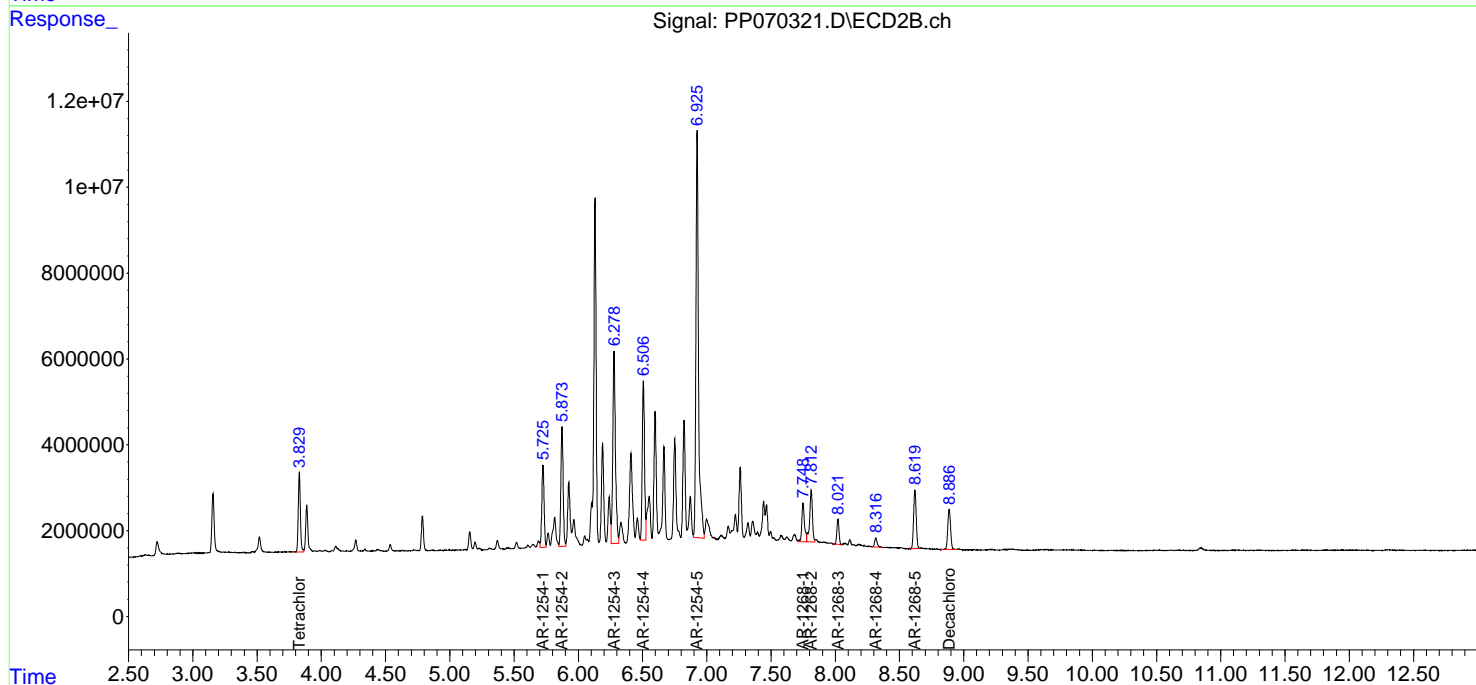
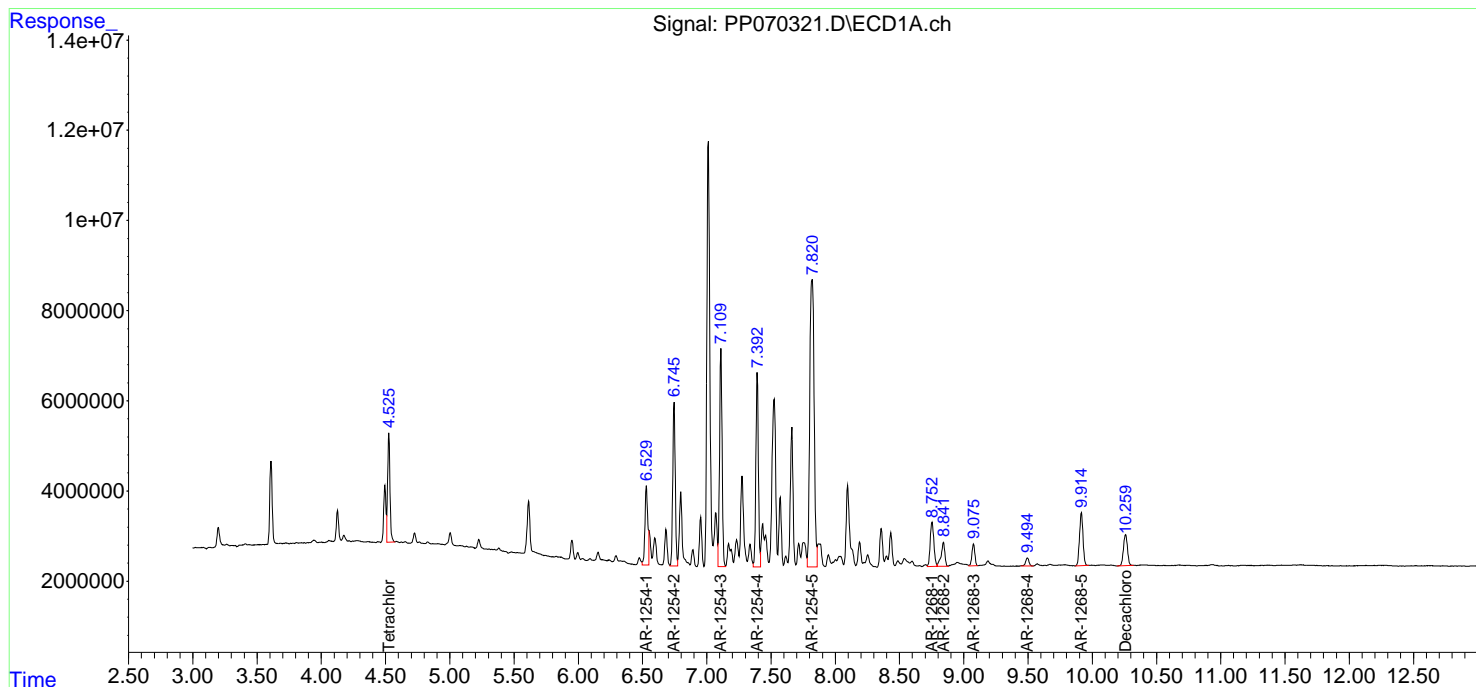
Instrument :
 ECD_P
ClientSampleId :
 K084-9B

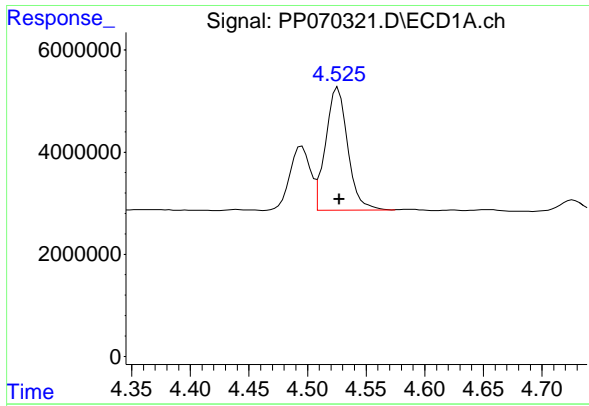
Manual Integrations
APPROVED

Reviewed By :Yogesh Patel 03/07/2025
 Supervised By :mohammad ahmed 03/08/2025

Integration File signal 1: autoint1.e
 Integration File signal 2: autoint2.e
 Quant Time: Mar 06 23:35:00 2025
 Quant Method : Z:\pestpcbsrv\HPCHEM1\ECD_P\methods\PP022425.M
 Quant Title : GC EXTRACTABLES
 QLast Update : Tue Feb 25 05:10:19 2025
 Response via : Initial Calibration
 Integrator: ChemStation

Volume Inj. : 2 µl
 Signal #1 Phase : ZB-MR1 Signal #2 Phase: ZB-MR2
 Signal #1 Info : 30Mx0.32mmx 0.50µ Signal #2 Info : 30M x 0.32mm x 0.25µm





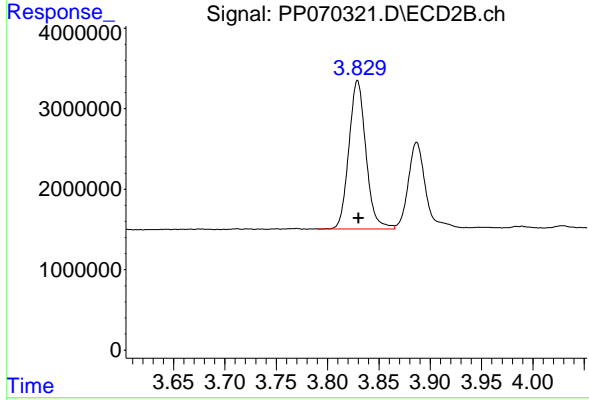
#1 Tetrachloro-m-xylene

R.T.: 4.526 min
 Delta R.T.: 0.000 min
 Response: 31482386
 Conc: 21.45 ng/ml

Instrument : ECD_P
 Client SampleId : K084-9B

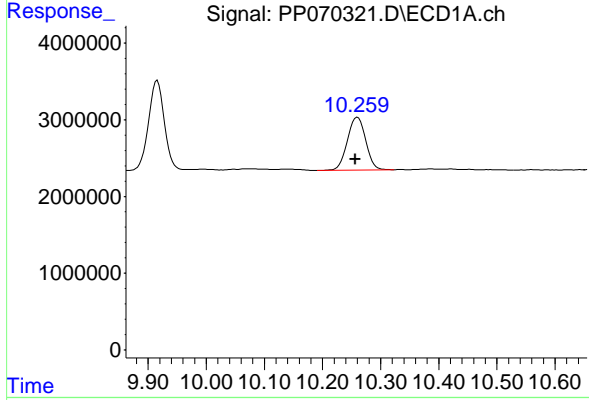
Manual Integrations
 APPROVED

Reviewed By :Yogesh Patel 03/07/2025
 Supervised By :mohammad ahmed 03/08/2025



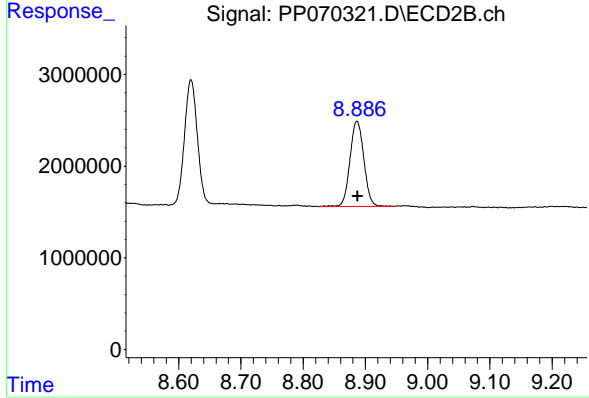
#1 Tetrachloro-m-xylene

R.T.: 3.829 min
 Delta R.T.: -0.001 min
 Response: 21276122
 Conc: 22.25 ng/ml



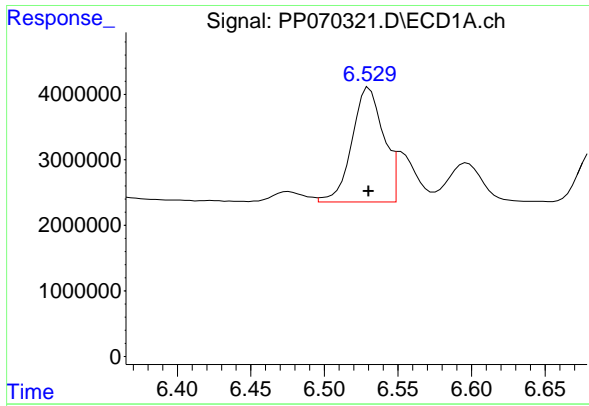
#2 Decachlorobiphenyl

R.T.: 10.260 min
 Delta R.T.: 0.004 min
 Response: 15026191
 Conc: 13.19 ng/ml



#2 Decachlorobiphenyl

R.T.: 8.886 min
 Delta R.T.: -0.002 min
 Response: 14389296
 Conc: 13.27 ng/ml



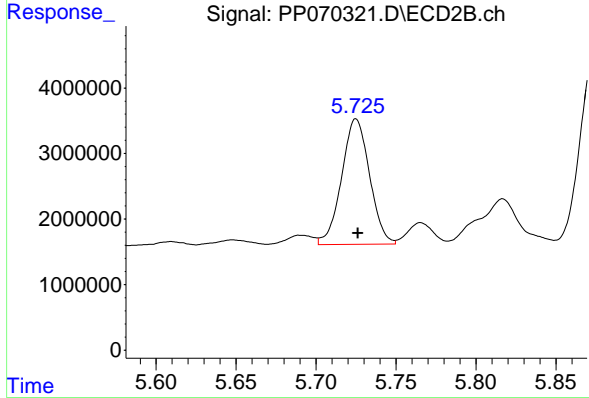
#26 AR-1254-1

R.T.: 6.529 min
 Delta R.T.: -0.001 min
 Response: 27921332
 Conc: 492.44 ng/ml

Instrument : ECD_P
 Client Sample Id : K084-9B

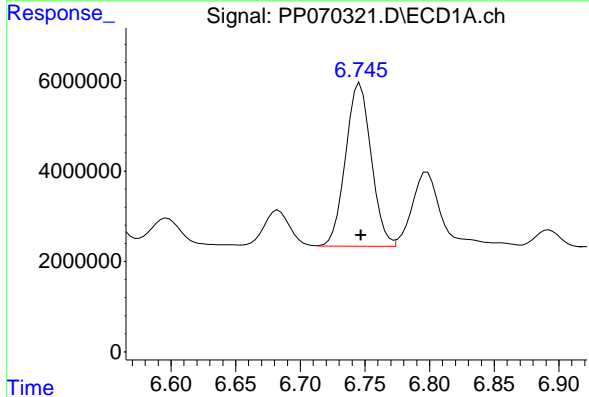
Manual Integrations
 APPROVED

Reviewed By :Yogesh Patel 03/07/2025
 Supervised By :mohammad ahmed 03/08/2025



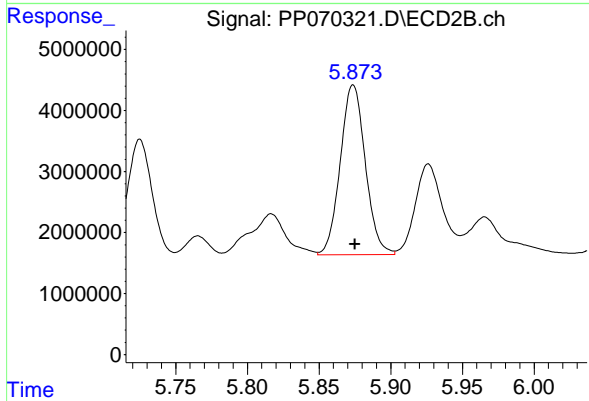
#26 AR-1254-1

R.T.: 5.725 min
 Delta R.T.: -0.001 min
 Response: 23294080
 Conc: 426.87 ng/ml



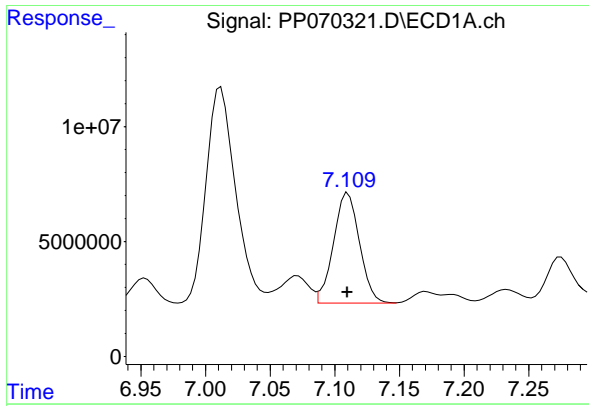
#27 AR-1254-2

R.T.: 6.746 min
 Delta R.T.: 0.000 min
 Response: 49592057
 Conc: 565.57 ng/ml



#27 AR-1254-2

R.T.: 5.874 min
 Delta R.T.: -0.001 min
 Response: 33851357
 Conc: 694.45 ng/ml



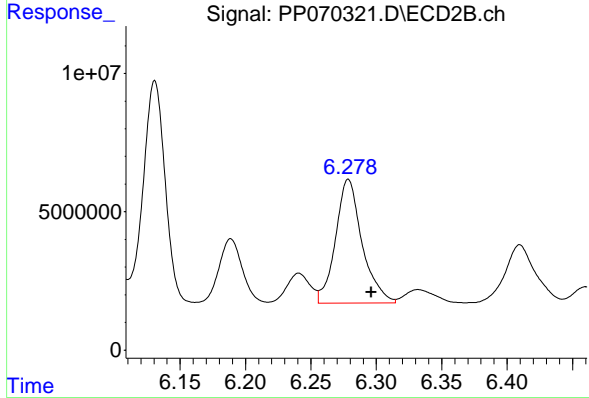
#28 AR-1254-3

R.T.: 7.110 min
 Delta R.T.: 0.000 min
 Response: 67082529
 Conc: 752.67 ng/ml

Instrument :
 ECD_P
 Client Sample Id :
 K084-9B

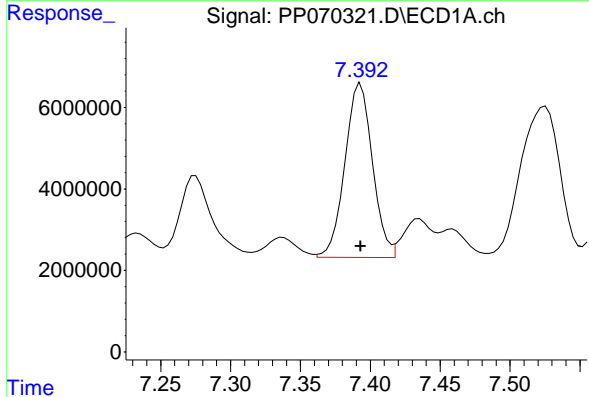
Manual Integrations
 APPROVED

Reviewed By :Yogesh Patel 03/07/2025
 Supervised By :mohammad ahmed 03/08/2025



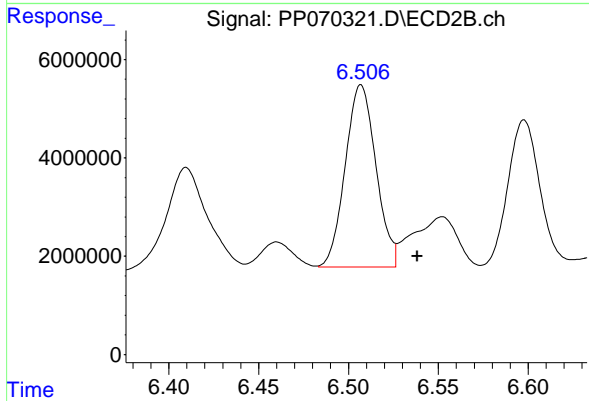
#28 AR-1254-3

R.T.: 6.279 min
 Delta R.T.: -0.017 min
 Response: 63372363
 Conc: 835.86 ng/ml



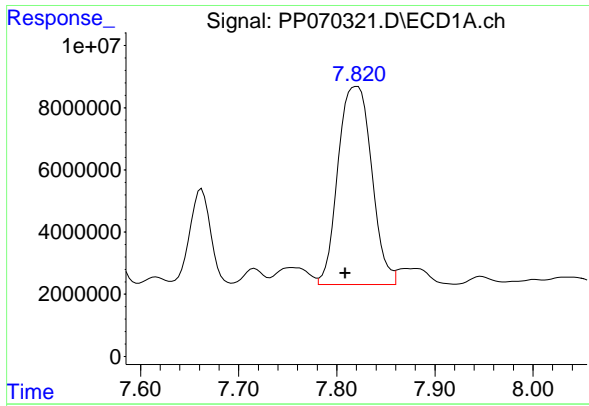
#29 AR-1254-4

R.T.: 7.393 min
 Delta R.T.: 0.000 min
 Response: 58742947
 Conc: 788.38 ng/ml



#29 AR-1254-4

R.T.: 6.506 min
 Delta R.T.: -0.032 min
 Response: 44330682
 Conc: 861.46 ng/ml m



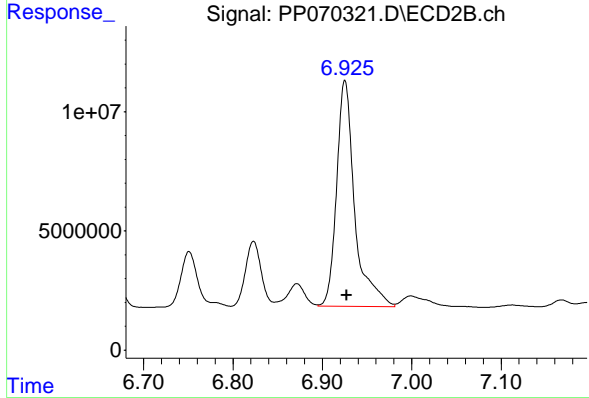
#30 AR-1254-5

R.T.: 7.821 min
 Delta R.T.: 0.012 min
 Response: 151382843
 Conc: 2253.99 ng/ml

Instrument : ECD_P
 Client Sample Id : K084-9B

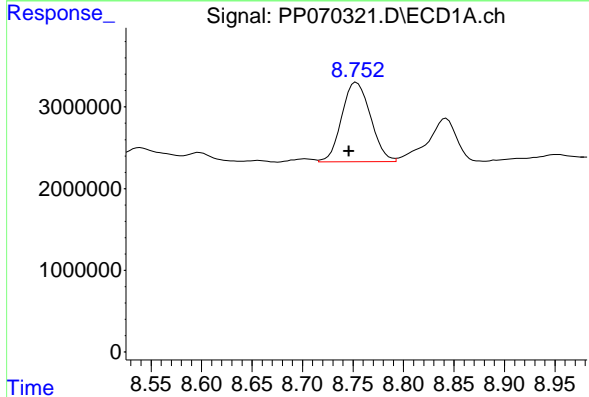
Manual Integrations
 APPROVED

Reviewed By :Yogesh Patel 03/07/2025
 Supervised By :mohammad ahmed 03/08/2025



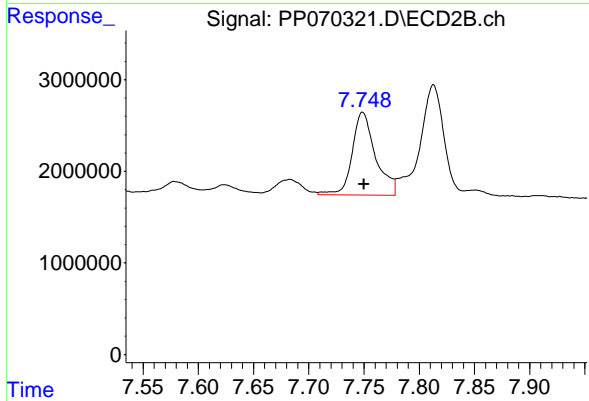
#30 AR-1254-5

R.T.: 6.925 min
 Delta R.T.: -0.002 min
 Response: 133448554
 Conc: 1974.99 ng/ml



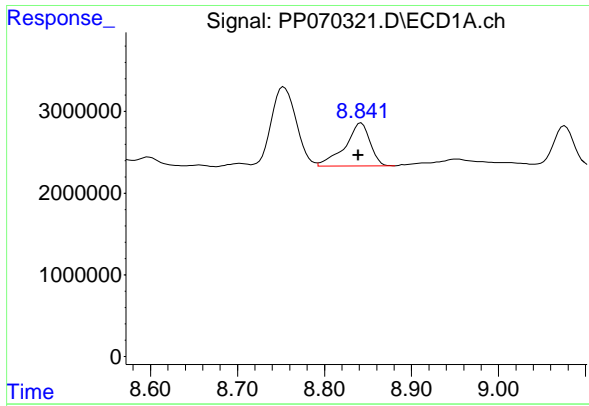
#41 AR-1268-1

R.T.: 8.753 min
 Delta R.T.: 0.007 min
 Response: 19352721
 Conc: 100.75 ng/ml



#41 AR-1268-1

R.T.: 7.749 min
 Delta R.T.: -0.001 min
 Response: 13329009
 Conc: 80.42 ng/ml



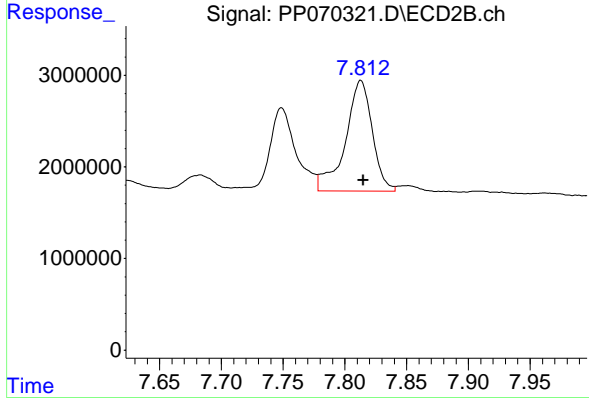
#42 AR-1268-2

R.T.: 8.842 min
 Delta R.T.: 0.003 min
 Response: 10633828
 Conc: 64.22 ng/ml

Instrument : ECD_P
 ClientSampleId : K084-9B

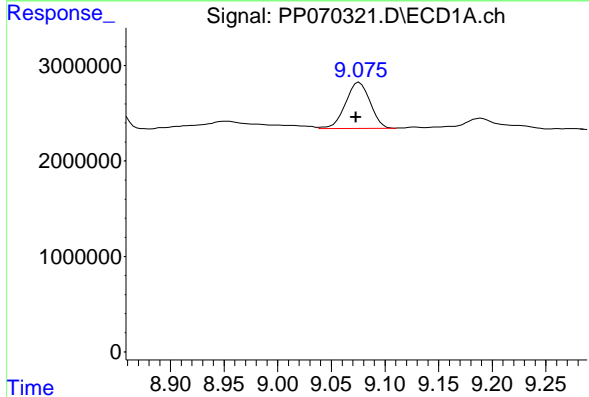
Manual Integrations
 APPROVED

Reviewed By :Yogesh Patel 03/07/2025
 Supervised By :mohammad ahmed 03/08/2025



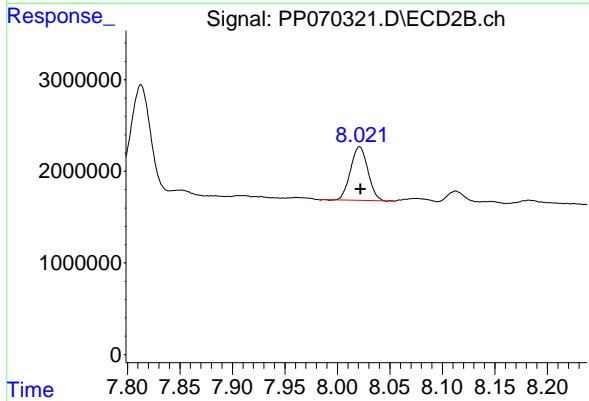
#42 AR-1268-2

R.T.: 7.813 min
 Delta R.T.: -0.002 min
 Response: 18324664
 Conc: 126.34 ng/ml



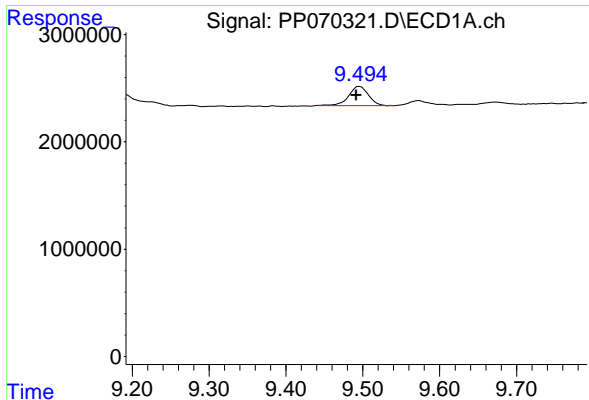
#43 AR-1268-3

R.T.: 9.076 min
 Delta R.T.: 0.003 min
 Response: 7727297
 Conc: 53.85 ng/ml



#43 AR-1268-3

R.T.: 8.021 min
 Delta R.T.: 0.000 min
 Response: 6665708
 Conc: 54.43 ng/ml



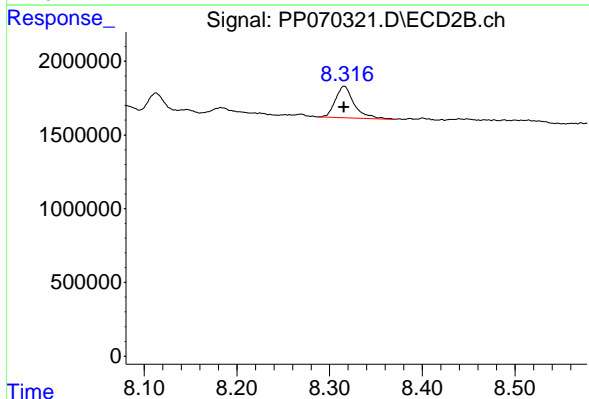
#44 AR-1268-4

R.T.: 9.496 min
 Delta R.T.: 0.004 min
 Response: 3152273
 Conc: 50.00 ng/ml

Instrument : ECD_P
 Client Sample Id : K084-9B

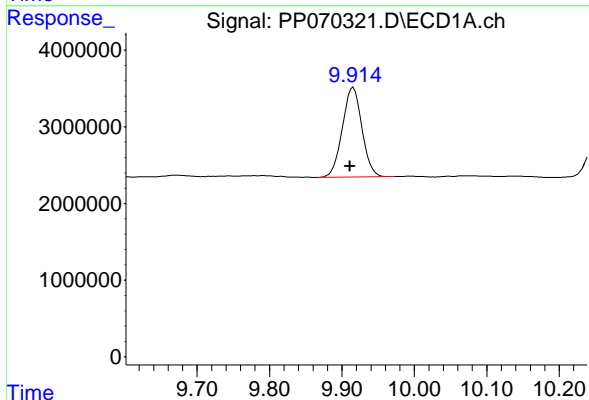
Manual Integrations
 APPROVED

Reviewed By :Yogesh Patel 03/07/2025
 Supervised By :mohammad ahmed 03/08/2025



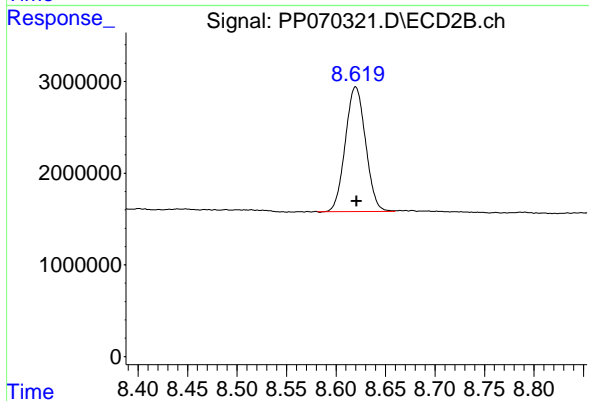
#44 AR-1268-4

R.T.: 8.316 min
 Delta R.T.: 0.000 min
 Response: 2995153
 Conc: 56.32 ng/ml



#45 AR-1268-5

R.T.: 9.916 min
 Delta R.T.: 0.004 min
 Response: 22003969
 Conc: 52.90 ng/ml



#45 AR-1268-5

R.T.: 8.620 min
 Delta R.T.: 0.000 min
 Response: 19313184
 Conc: 54.37 ng/ml