

Data Path : Z:\pestpcbsrv\HPCHEM1\ECD_P\Data\PP030625\
 Data File : PP070323.D
 Signal(s) : Signal #1: ECD1A.ch Signal #2: ECD2B.ch
 Acq On : 06 Mar 2025 19:21
 Operator : YP\AJ
 Sample : Q1436-08
 Misc :
 ALS Vial : 25 Sample Multiplier: 1

Instrument :
 ECD_P
ClientSampleId :
 K084-10B

Manual Integrations
APPROVED

Reviewed By :Yogesh Patel 03/07/2025
 Supervised By :mohammad ahmed 03/08/2025

Integration File signal 1: autoint1.e
 Integration File signal 2: autoint2.e
 Quant Time: Mar 06 23:35:36 2025
 Quant Method : Z:\pestpcbsrv\HPCHEM1\ECD_P\methods\PP022425.M
 Quant Title : GC EXTRACTABLES
 QLast Update : Tue Feb 25 05:10:19 2025
 Response via : Initial Calibration
 Integrator: ChemStation

Volume Inj. : 2 µl
 Signal #1 Phase : ZB-MR1 Signal #2 Phase: ZB-MR2
 Signal #1 Info : 30Mx0.32mmx 0.50µ Signal #2 Info : 30M x 0.32mm x 0.25µm

Compound	RT#1	RT#2	Resp#1	Resp#2	ng/ml	ng/ml

System Monitoring Compounds						
1) SA Tetrachlo...	4.524	3.829	37277585	23590406	25.400	24.675
2) SA Decachlor...	10.256	8.885	48200130	43177740	42.317	39.828
Target Compounds						
26) L6 AR-1254-1	6.527	5.725	121.2E6	115.7E6	2136.998m	2119.878
27) L6 AR-1254-2	6.744	5.873	257.8E6	167.8E6	2939.885	3441.645
28) L6 AR-1254-3	7.107	6.278	361.6E6	341.1E6	4057.494	4498.899
29) L6 AR-1254-4	7.390	6.506	311.0E6	242.6E6	4173.382	4714.339m
30) L6 AR-1254-5	7.822	6.924	924.5E6	841.2E6	13764.957	12449.922
41) L9 AR-1268-1	8.747	7.748	251.6E6	190.8E6	1309.892	1150.929
42) L9 AR-1268-2	8.839	7.813	210.0E6	230.9E6	1268.170	1591.938 #
43) L9 AR-1268-3	9.074	8.020	96521344	83286935	672.604	680.091
44) L9 AR-1268-4	9.492	8.315	87445036	74351753	1386.933	1397.982
45) L9 AR-1268-5	9.912	8.620	349.3E6	301.8E6	839.877	849.696

(f)=RT Delta > 1/2 Window (#)=Amounts differ by > 25% (m)=manual int.

Data Path : Z:\pestpcbsrv\HPCHEM1\ECD_P\Data\PP030625\
 Data File : PP070323.D
 Signal(s) : Signal #1: ECD1A.ch Signal #2: ECD2B.ch
 Acq On : 06 Mar 2025 19:21
 Operator : YP\AJ
 Sample : Q1436-08
 Misc :
 ALS Vial : 25 Sample Multiplier: 1

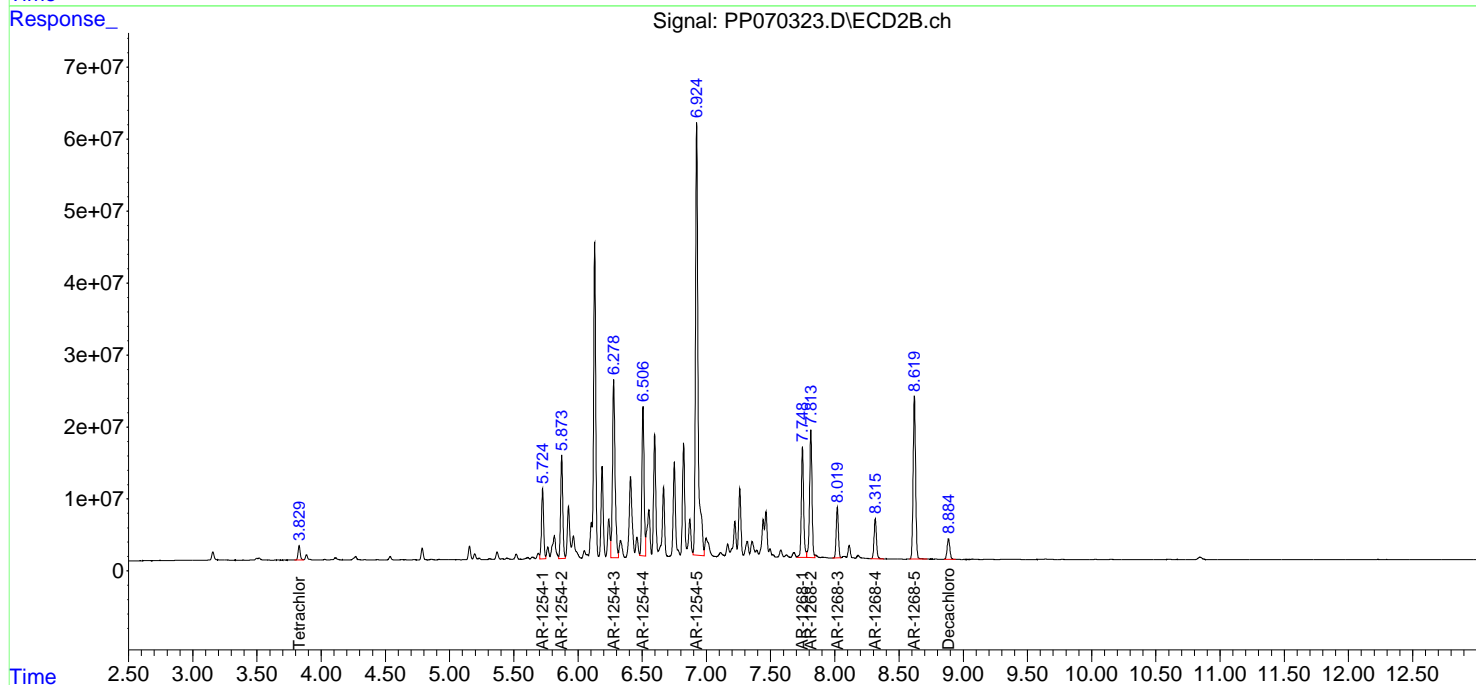
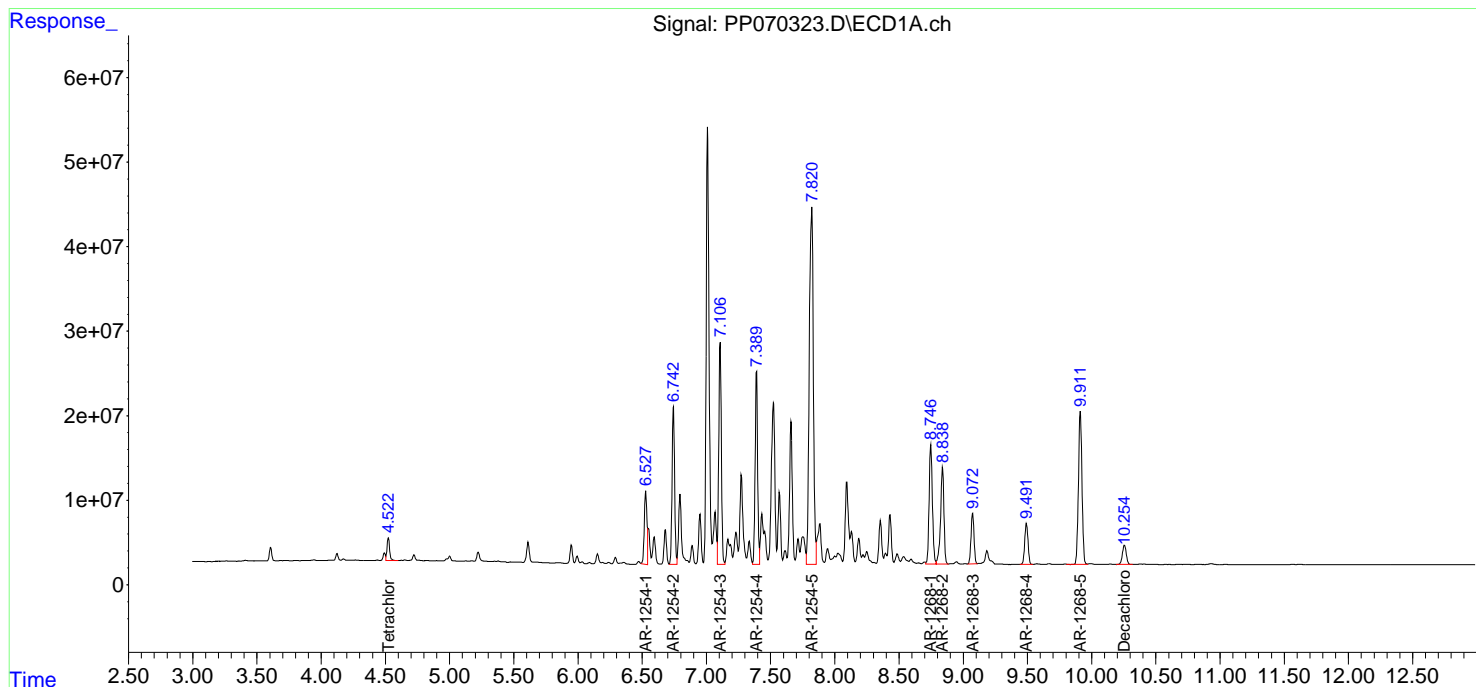
Instrument :
 ECD_P
ClientSampleId :
 K084-10B

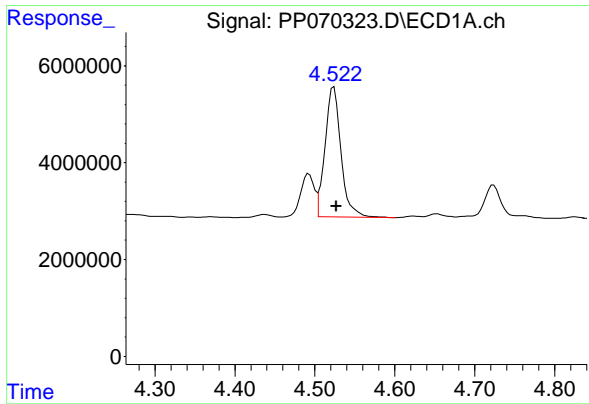
Manual Integrations
APPROVED

Reviewed By :Yogesh Patel 03/07/2025
 Supervised By :mohammad ahmed 03/08/2025

Integration File signal 1: autoint1.e
 Integration File signal 2: autoint2.e
 Quant Time: Mar 06 23:35:36 2025
 Quant Method : Z:\pestpcbsrv\HPCHEM1\ECD_P\methods\PP022425.M
 Quant Title : GC EXTRACTABLES
 QLast Update : Tue Feb 25 05:10:19 2025
 Response via : Initial Calibration
 Integrator: ChemStation

Volume Inj. : 2 µl
 Signal #1 Phase : ZB-MR1 Signal #2 Phase: ZB-MR2
 Signal #1 Info : 30Mx0.32mmx 0.50µ Signal #2 Info : 30M x 0.32mm x 0.25µm





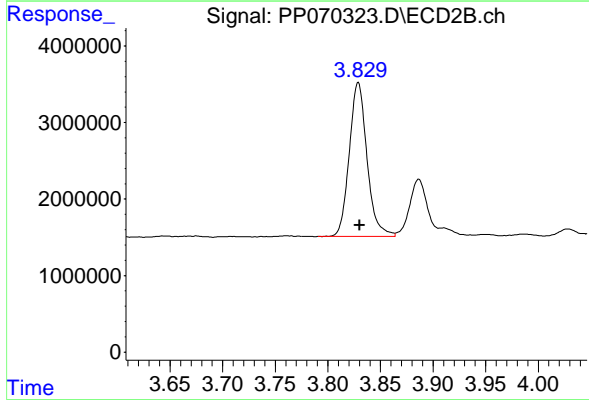
#1 Tetrachloro-m-xylene

R.T.: 4.524 min
 Delta R.T.: -0.003 min
 Response: 37277585
 Conc: 25.40 ng/ml

Instrument : ECD_P
 Client SampleId : K084-10B

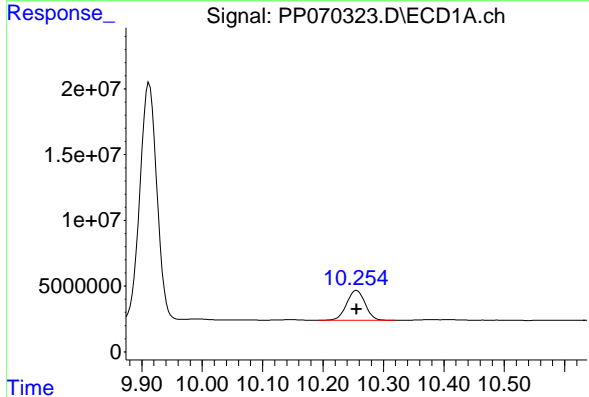
Manual Integrations
 APPROVED

Reviewed By :Yogesh Patel 03/07/2025
 Supervised By :mohammad ahmed 03/08/2025



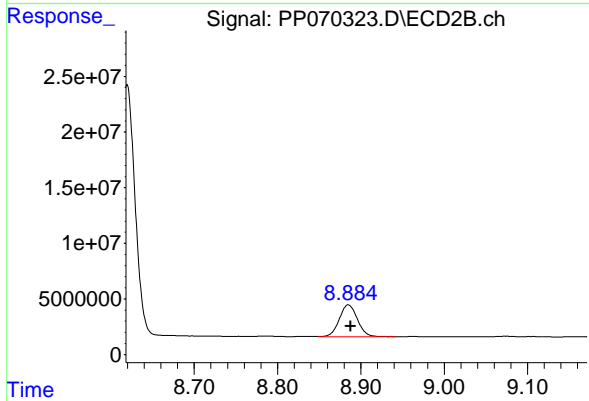
#1 Tetrachloro-m-xylene

R.T.: 3.829 min
 Delta R.T.: -0.001 min
 Response: 23590406
 Conc: 24.68 ng/ml



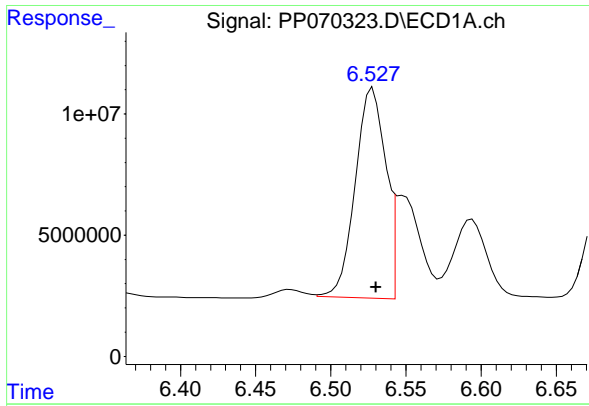
#2 Decachlorobiphenyl

R.T.: 10.256 min
 Delta R.T.: 0.000 min
 Response: 48200130
 Conc: 42.32 ng/ml



#2 Decachlorobiphenyl

R.T.: 8.885 min
 Delta R.T.: -0.003 min
 Response: 43177740
 Conc: 39.83 ng/ml



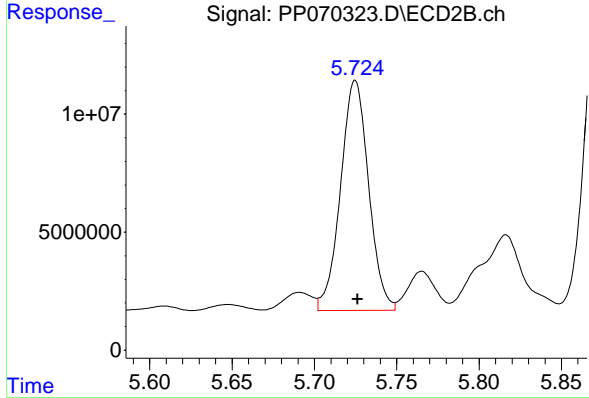
#26 AR-1254-1

R.T.: 6.527 min
 Delta R.T.: -0.004 min
 Response: 121168502
 Conc: 2137.00 ng/ml

Instrument : ECD_P
 Client Sample Id : K084-10B

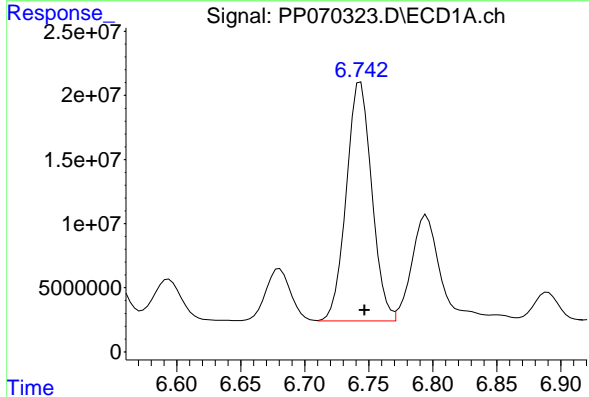
Manual Integrations
 APPROVED

Reviewed By :Yogesh Patel 03/07/2025
 Supervised By :mohammad ahmed 03/08/2025



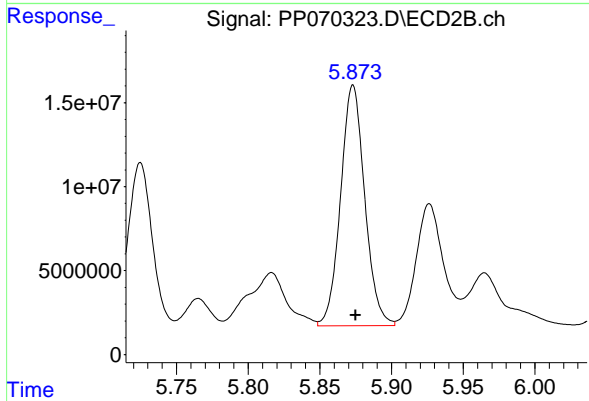
#26 AR-1254-1

R.T.: 5.725 min
 Delta R.T.: -0.002 min
 Response: 115680401
 Conc: 2119.88 ng/ml



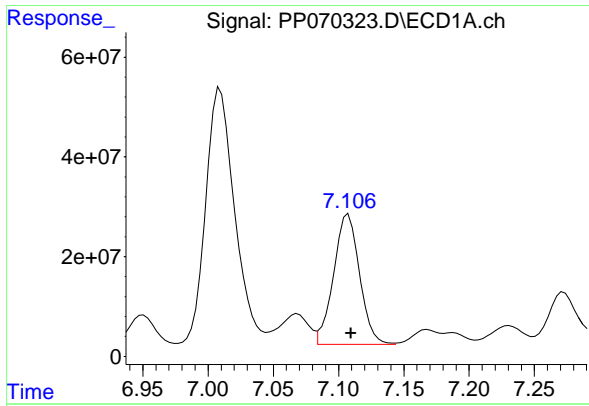
#27 AR-1254-2

R.T.: 6.744 min
 Delta R.T.: -0.003 min
 Response: 257785252
 Conc: 2939.89 ng/ml



#27 AR-1254-2

R.T.: 5.873 min
 Delta R.T.: -0.002 min
 Response: 167764801
 Conc: 3441.64 ng/ml



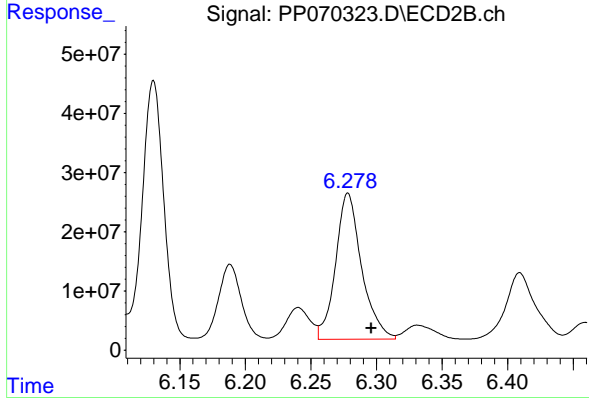
#28 AR-1254-3

R.T.: 7.107 min
 Delta R.T.: -0.002 min
 Response: 361629751
 Conc: 4057.49 ng/ml

Instrument :
 ECD_P
 Client Sample Id :
 K084-10B

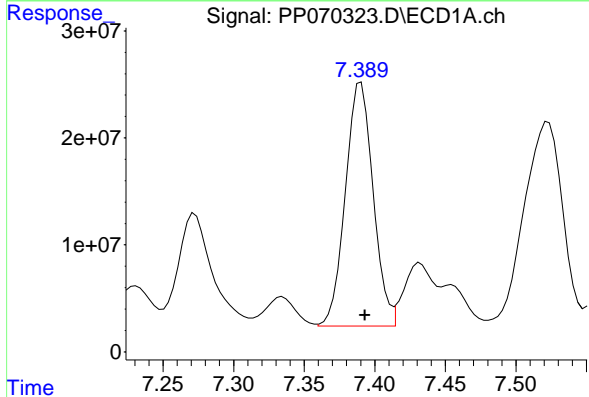
Manual Integrations
 APPROVED

Reviewed By :Yogesh Patel 03/07/2025
 Supervised By :mohammad ahmed 03/08/2025



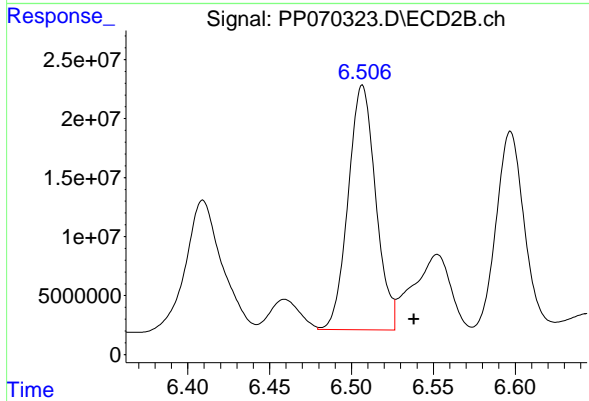
#28 AR-1254-3

R.T.: 6.278 min
 Delta R.T.: -0.018 min
 Response: 341091153
 Conc: 4498.90 ng/ml



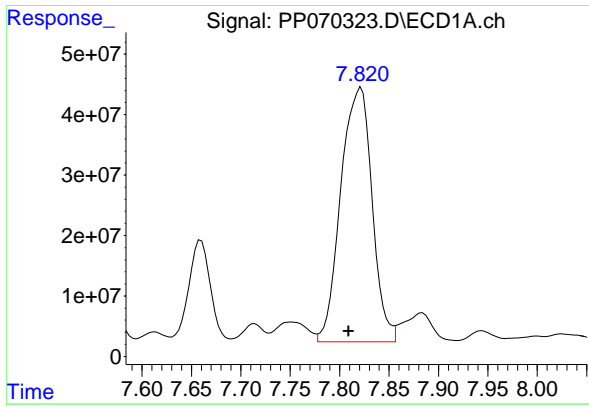
#29 AR-1254-4

R.T.: 7.390 min
 Delta R.T.: -0.003 min
 Response: 310963371
 Conc: 4173.38 ng/ml



#29 AR-1254-4

R.T.: 6.506 min
 Delta R.T.: -0.032 min
 Response: 242600008
 Conc: 4714.34 ng/ml m



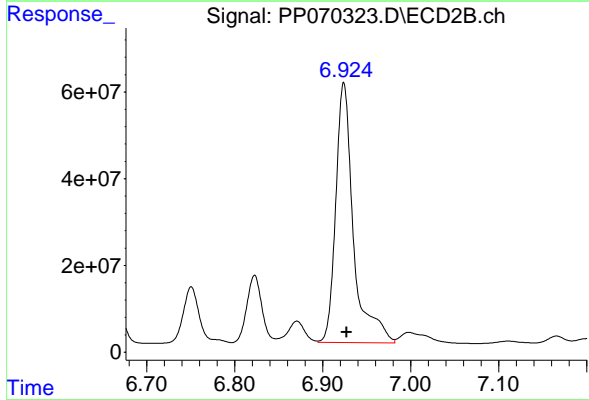
#30 AR-1254-5

R.T.: 7.822 min
 Delta R.T.: 0.013 min
 Response: 924486091
 Conc: 13764.96 ng/ml

Instrument :
 ECD_P
 ClientSampleId :
 K084-10B

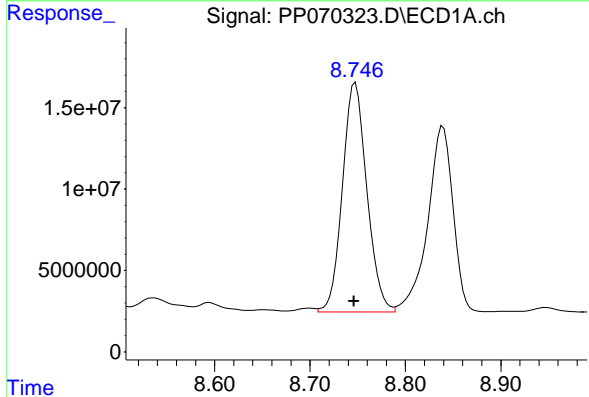
Manual Integrations
 APPROVED

Reviewed By :Yogesh Patel 03/07/2025
 Supervised By :mohammad ahmed 03/08/2025



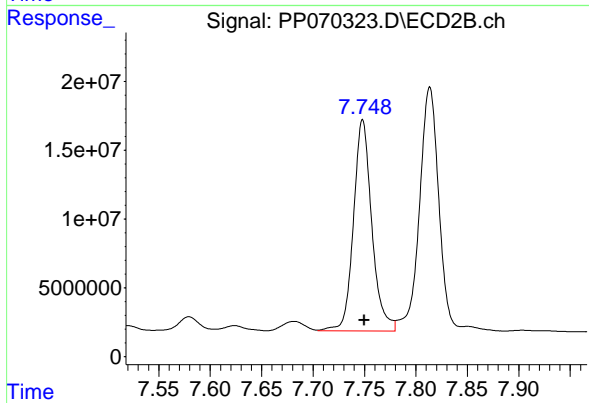
#30 AR-1254-5

R.T.: 6.924 min
 Delta R.T.: -0.003 min
 Response: 841231579
 Conc: 12449.92 ng/ml



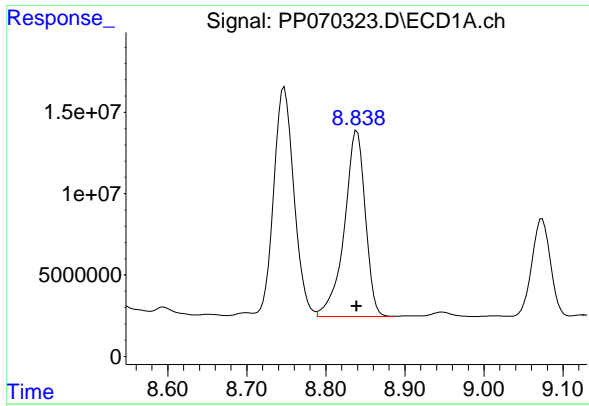
#41 AR-1268-1

R.T.: 8.747 min
 Delta R.T.: 0.001 min
 Response: 251621529
 Conc: 1309.89 ng/ml



#41 AR-1268-1

R.T.: 7.748 min
 Delta R.T.: -0.002 min
 Response: 190765371
 Conc: 1150.93 ng/ml



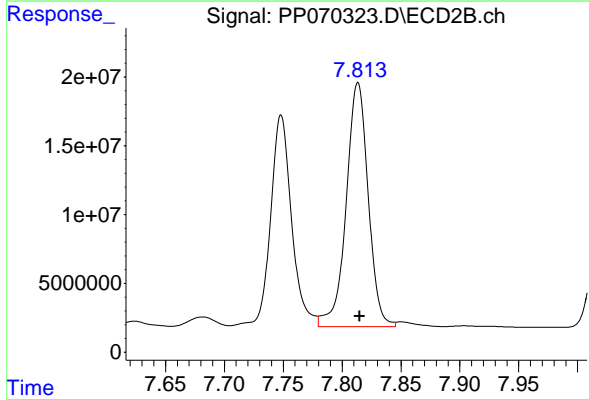
#42 AR-1268-2

R.T.: 8.839 min
 Delta R.T.: 0.000 min
 Response: 209990249
 Conc: 1268.17 ng/ml

Instrument : ECD_P
 Client Sample Id : K084-10B

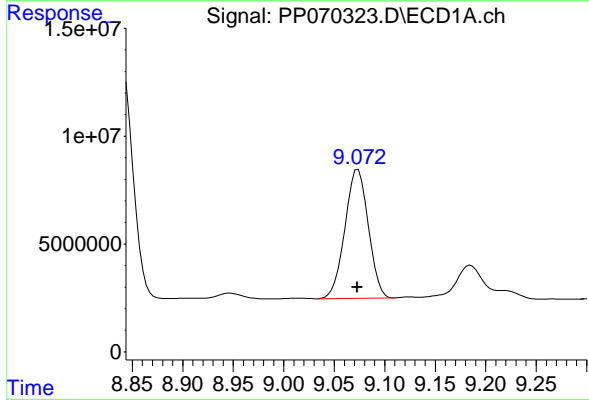
Manual Integrations
 APPROVED

Reviewed By :Yogesh Patel 03/07/2025
 Supervised By :mohammad ahmed 03/08/2025



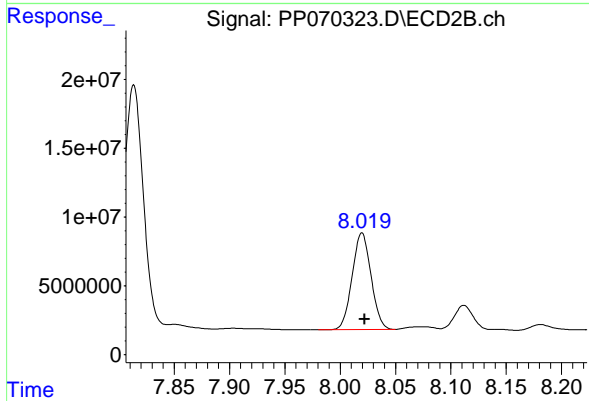
#42 AR-1268-2

R.T.: 7.813 min
 Delta R.T.: -0.002 min
 Response: 230897216
 Conc: 1591.94 ng/ml



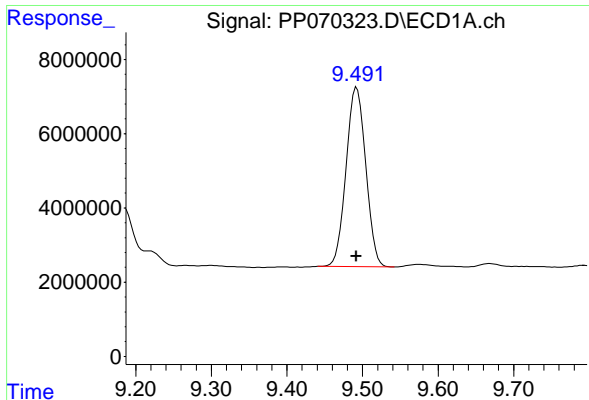
#43 AR-1268-3

R.T.: 9.074 min
 Delta R.T.: 0.000 min
 Response: 96521344
 Conc: 672.60 ng/ml



#43 AR-1268-3

R.T.: 8.020 min
 Delta R.T.: -0.002 min
 Response: 83286935
 Conc: 680.09 ng/ml



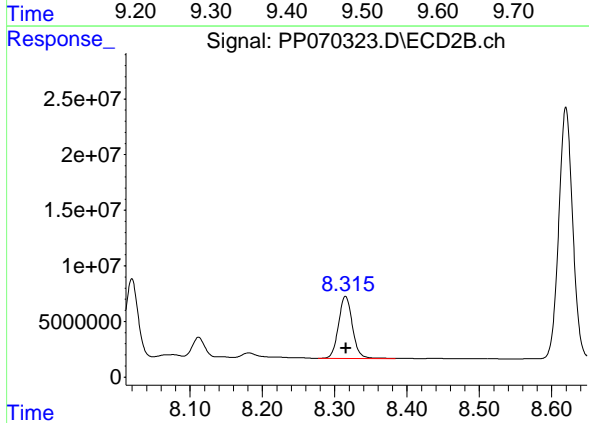
#44 AR-1268-4

R.T.: 9.492 min
 Delta R.T.: 0.000 min
 Response: 87445036
 Conc: 1386.93 ng/ml

Instrument :
 ECD_P
 ClientSampleId :
 K084-10B

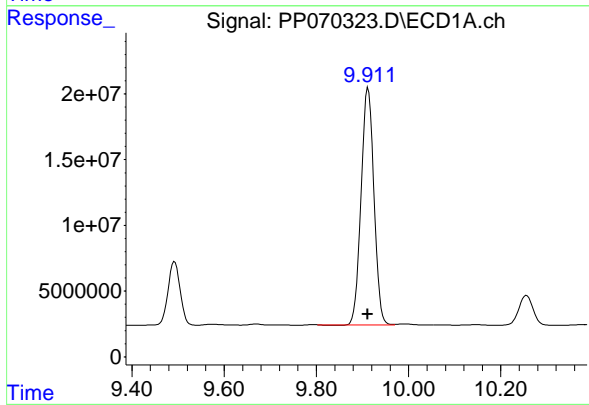
Manual Integrations
 APPROVED

Reviewed By :Yogesh Patel 03/07/2025
 Supervised By :mohammad ahmed 03/08/2025



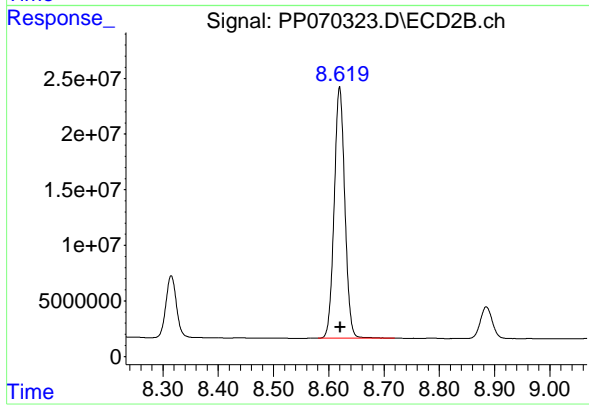
#44 AR-1268-4

R.T.: 8.315 min
 Delta R.T.: 0.000 min
 Response: 74351753
 Conc: 1397.98 ng/ml



#45 AR-1268-5

R.T.: 9.912 min
 Delta R.T.: 0.000 min
 Response: 349322227
 Conc: 839.88 ng/ml



#45 AR-1268-5

R.T.: 8.620 min
 Delta R.T.: -0.001 min
 Response: 301828730
 Conc: 849.70 ng/ml