

Data Path : Z:\pestpcbsrv\HPCHEM1\ECD_P\Data\PP030625\
 Data File : PP070329.D
 Signal(s) : Signal #1: ECD1A.ch Signal #2: ECD2B.ch
 Acq On : 06 Mar 2025 22:14
 Operator : YP\AJ
 Sample : Q1436-09
 Misc :
 ALS Vial : 26 Sample Multiplier: 1

Instrument :
 ECD_P
ClientSampleId :
 K084-10C

Manual Integrations
APPROVED

Reviewed By :Yogesh Patel 03/07/2025
 Supervised By :mohammad ahmed 03/08/2025

Integration File signal 1: autoint1.e
 Integration File signal 2: autoint2.e
 Quant Time: Mar 07 06:03:39 2025
 Quant Method : Z:\pestpcbsrv\HPCHEM1\ECD_P\methods\PP022425.M
 Quant Title : GC EXTRACTABLES
 QLast Update : Tue Feb 25 05:10:19 2025
 Response via : Initial Calibration
 Integrator: ChemStation

Volume Inj. : 2 µl
 Signal #1 Phase : ZB-MR1 Signal #2 Phase: ZB-MR2
 Signal #1 Info : 30Mx0.32mmx 0.50µ Signal #2 Info : 30M x 0.32mm x 0.25µm

| Compound | RT#1 | RT#2 | Resp#1 | Resp#2 | ng/ml | ng/ml |
|-----------------------------|--------|-------|----------|----------|---------|----------|
| ----- | | | | | | |
| System Monitoring Compounds | | | | | | |
| 1) SA Tetrachlo... | 4.526 | 3.831 | 35452629 | 21201141 | 24.156m | 22.176 |
| 2) SA Decachlor... | 10.257 | 8.884 | 24634696 | 23014192 | 21.628 | 21.229 |
| Target Compounds | | | | | | |
| 26) L6 AR-1254-1 | 6.529 | 5.724 | 7766910 | 4723368 | 136.982 | 86.557 # |
| 27) L6 AR-1254-2 | 6.745 | 5.873 | 11085504 | 7090567 | 126.423 | 145.461 |
| 28) L6 AR-1254-3 | 7.109 | 6.277 | 15305682 | 15301596 | 171.730 | 201.824 |
| 29) L6 AR-1254-4 | 7.392 | 6.506 | 12999850 | 9410707 | 174.469 | 182.874m |
| 30) L6 AR-1254-5 | 7.826 | 6.923 | 60614339 | 52378102 | 902.505 | 775.177 |
| 41) L9 AR-1268-1 | 8.749 | 7.748 | 9916766 | 9039796 | 51.625 | 54.539 |
| 42) L9 AR-1268-2 | 8.840 | 7.812 | 7752397 | 9108132 | 46.818 | 62.797 # |
| 43) L9 AR-1268-3 | 9.075 | 8.019 | 4414260 | 3794867 | 30.761 | 30.988 |
| 44) L9 AR-1268-4 | 9.495 | 8.314 | 2735415 | 2175613 | 43.385 | 40.906 |
| 45) L9 AR-1268-5 | 9.914 | 8.617 | 11210128 | 10279724 | 26.953 | 28.939 |
| ----- | | | | | | |

(f)=RT Delta > 1/2 Window (#)=Amounts differ by > 25% (m)=manual int.

Data Path : Z:\pestpcbsrv\HPCHEM1\ECD_P\Data\PP030625\
 Data File : PP070329.D
 Signal(s) : Signal #1: ECD1A.ch Signal #2: ECD2B.ch
 Acq On : 06 Mar 2025 22:14
 Operator : YP\AJ
 Sample : Q1436-09
 Misc :
 ALS Vial : 26 Sample Multiplier: 1

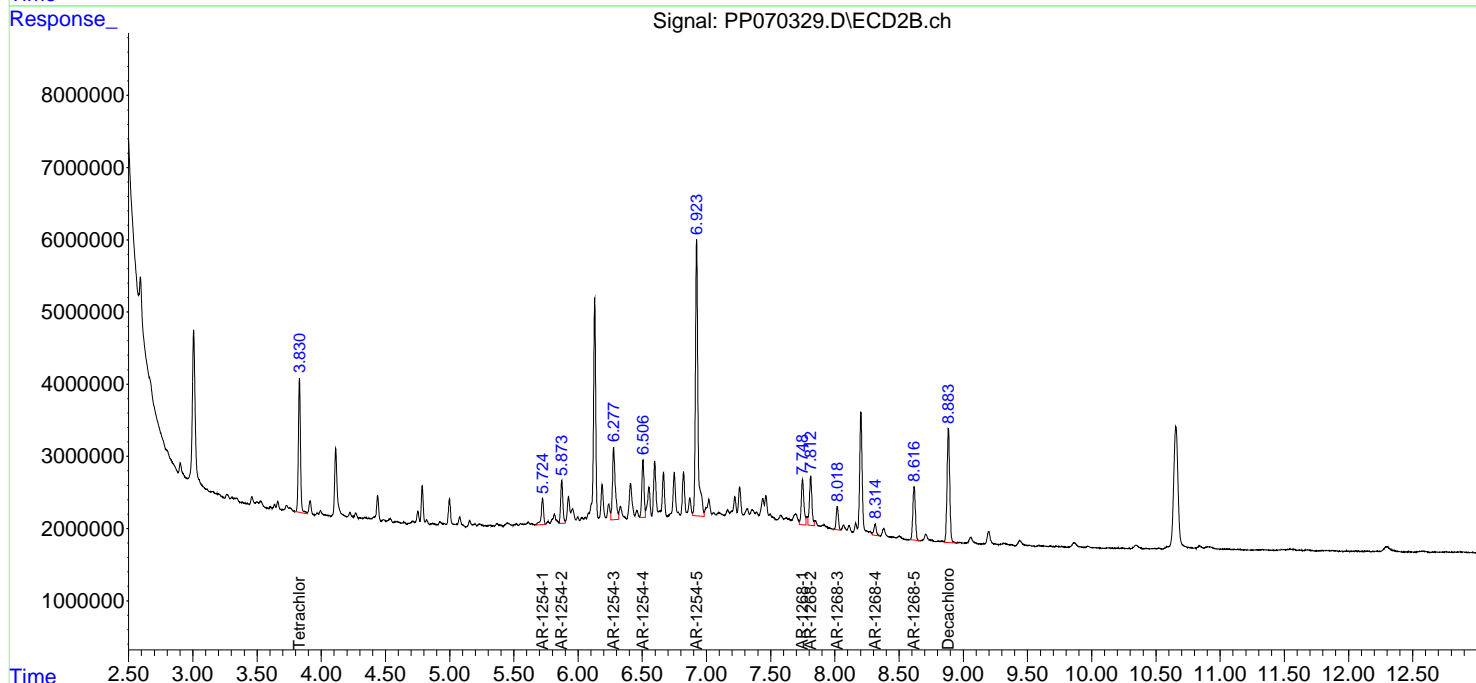
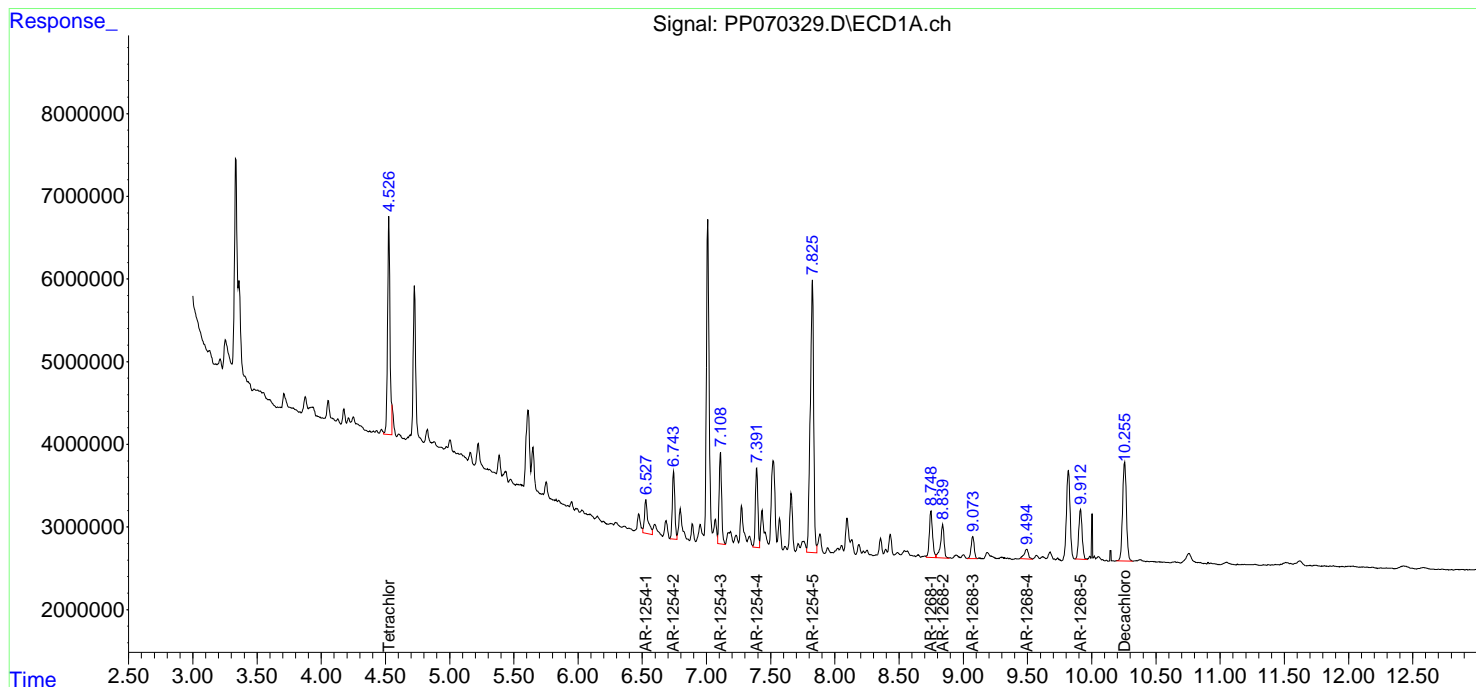
Instrument :
 ECD_P
ClientSampleId :
 K084-10C

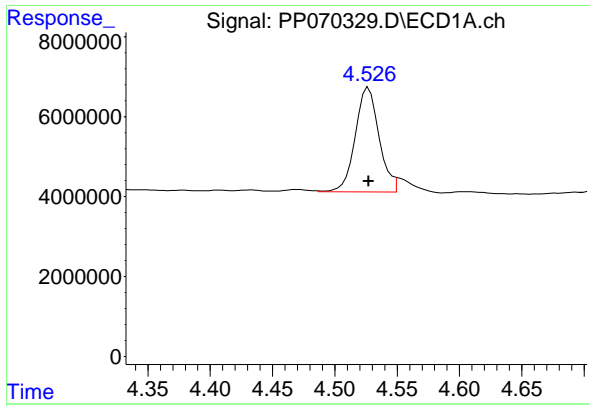
Manual Integrations
APPROVED

Reviewed By :Yogesh Patel 03/07/2025
 Supervised By :mohammad ahmed 03/08/2025

Integration File signal 1: autoint1.e
 Integration File signal 2: autoint2.e
 Quant Time: Mar 07 06:03:39 2025
 Quant Method : Z:\pestpcbsrv\HPCHEM1\ECD_P\methods\PP022425.M
 Quant Title : GC EXTRACTABLES
 QLast Update : Tue Feb 25 05:10:19 2025
 Response via : Initial Calibration
 Integrator: ChemStation

Volume Inj. : 2 µl
 Signal #1 Phase : ZB-MR1 Signal #2 Phase: ZB-MR2
 Signal #1 Info : 30Mx0.32mmx 0.50µ Signal #2 Info : 30M x 0.32mm x 0.25µm





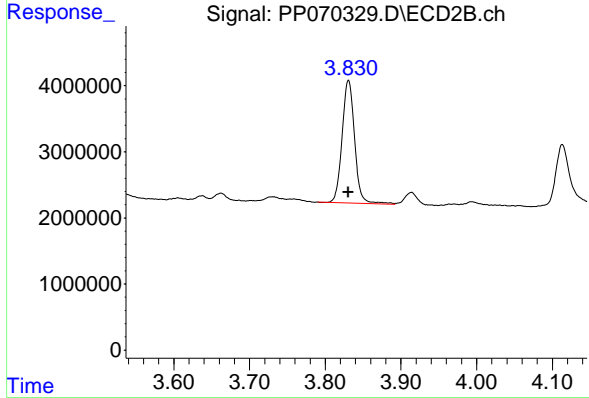
#1 Tetrachloro-m-xylene

R.T.: 4.526 min
 Delta R.T.: -0.001 min
 Response: 35452629
 Conc: 24.16 ng/ml

Instrument : ECD_P
 Client Sample Id : K084-10C

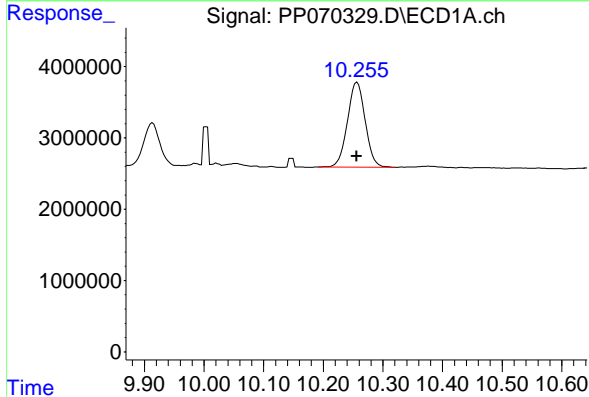
Manual Integrations
 APPROVED

Reviewed By :Yogesh Patel 03/07/2025
 Supervised By :mohammad ahmed 03/08/2025



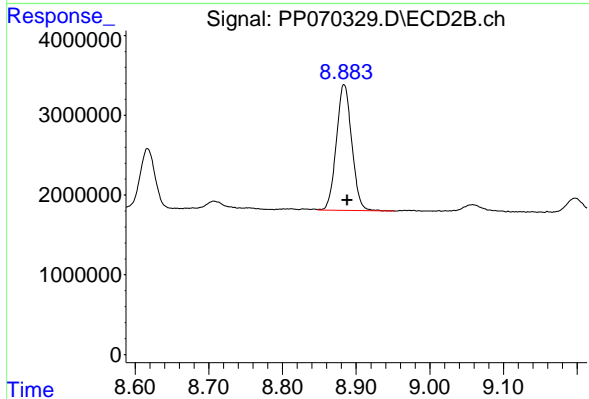
#1 Tetrachloro-m-xylene

R.T.: 3.831 min
 Delta R.T.: 0.000 min
 Response: 21201141
 Conc: 22.18 ng/ml



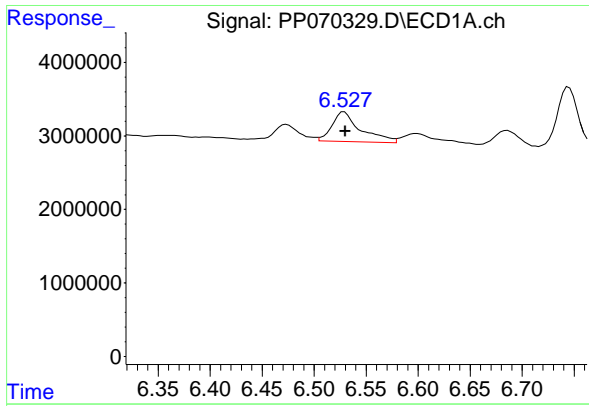
#2 Decachlorobiphenyl

R.T.: 10.257 min
 Delta R.T.: 0.000 min
 Response: 24634696
 Conc: 21.63 ng/ml



#2 Decachlorobiphenyl

R.T.: 8.884 min
 Delta R.T.: -0.004 min
 Response: 23014192
 Conc: 21.23 ng/ml



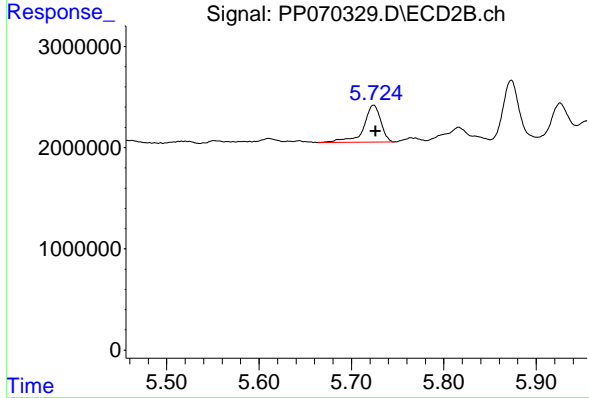
#26 AR-1254-1

R.T.: 6.529 min
 Delta R.T.: -0.001 min
 Response: 7766910
 Conc: 136.98 ng/ml

Instrument : ECD_P
 Client Sample Id : K084-10C

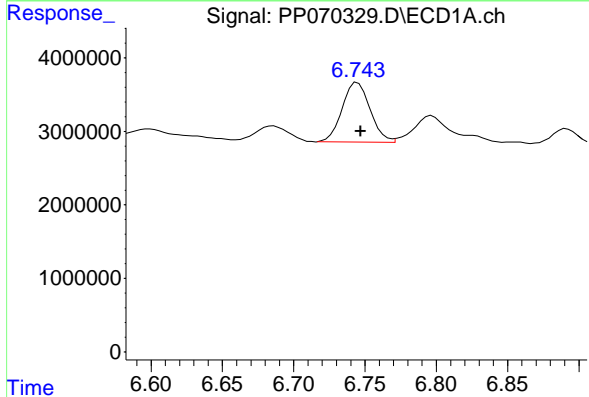
Manual Integrations
 APPROVED

Reviewed By :Yogesh Patel 03/07/2025
 Supervised By :mohammad ahmed 03/08/2025



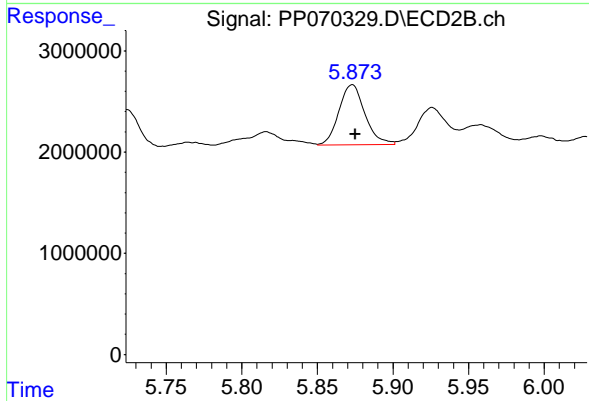
#26 AR-1254-1

R.T.: 5.724 min
 Delta R.T.: -0.002 min
 Response: 4723368
 Conc: 86.56 ng/ml



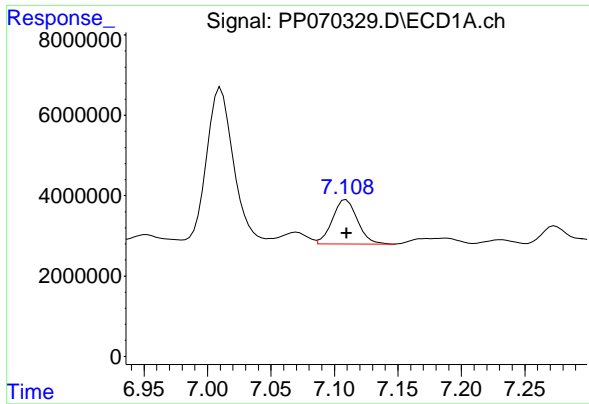
#27 AR-1254-2

R.T.: 6.745 min
 Delta R.T.: -0.002 min
 Response: 11085504
 Conc: 126.42 ng/ml



#27 AR-1254-2

R.T.: 5.873 min
 Delta R.T.: -0.002 min
 Response: 7090567
 Conc: 145.46 ng/ml



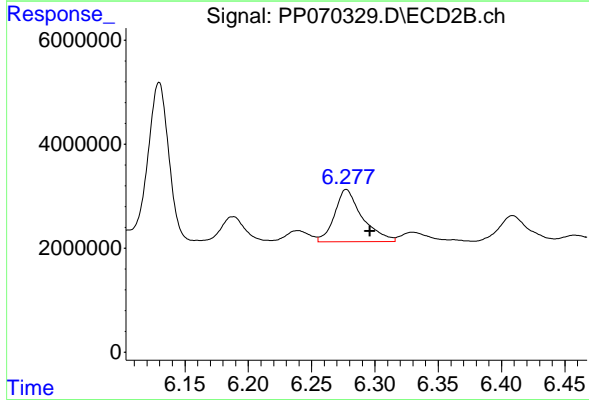
#28 AR-1254-3

R.T.: 7.109 min
 Delta R.T.: 0.000 min
 Response: 15305682
 Conc: 171.73 ng/ml

Instrument :
 ECD_P
 Client Sample Id :
 K084-10C

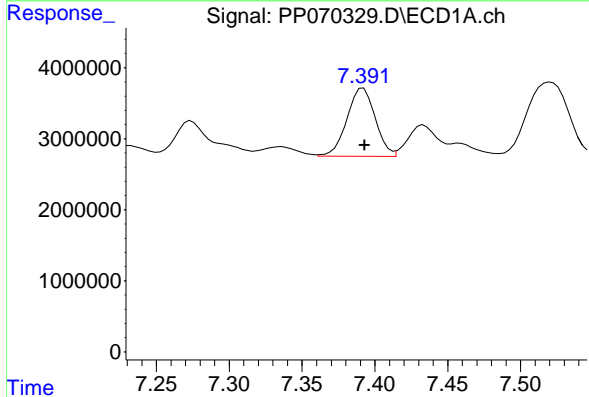
Manual Integrations
 APPROVED

Reviewed By :Yogesh Patel 03/07/2025
 Supervised By :mohammad ahmed 03/08/2025



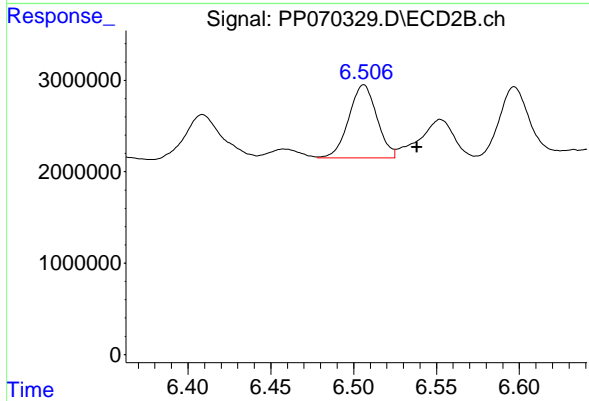
#28 AR-1254-3

R.T.: 6.277 min
 Delta R.T.: -0.019 min
 Response: 15301596
 Conc: 201.82 ng/ml



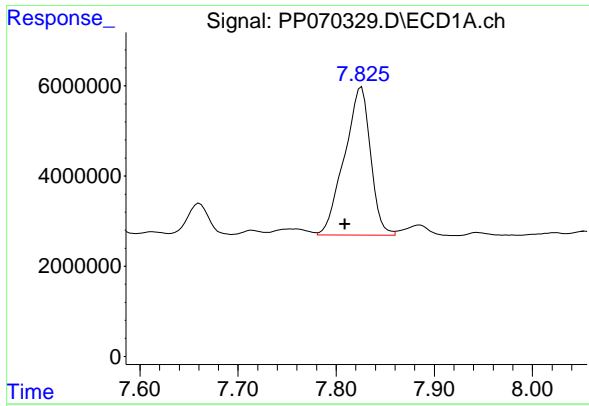
#29 AR-1254-4

R.T.: 7.392 min
 Delta R.T.: -0.001 min
 Response: 12999850
 Conc: 174.47 ng/ml



#29 AR-1254-4

R.T.: 6.506 min
 Delta R.T.: -0.032 min
 Response: 9410707
 Conc: 182.87 ng/ml m



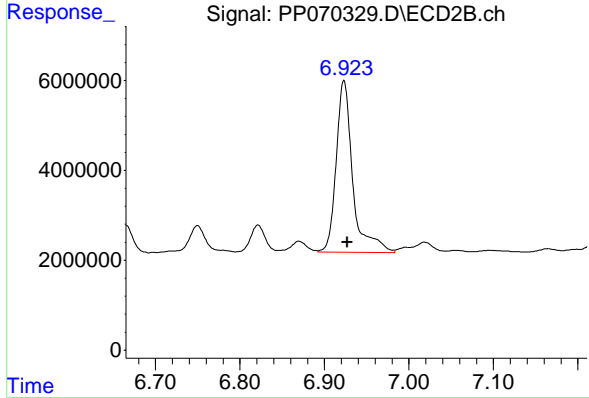
#30 AR-1254-5

R.T.: 7.826 min
 Delta R.T.: 0.017 min
 Response: 60614339
 Conc: 902.51 ng/ml

Instrument : ECD_P
 Client Sample Id : K084-10C

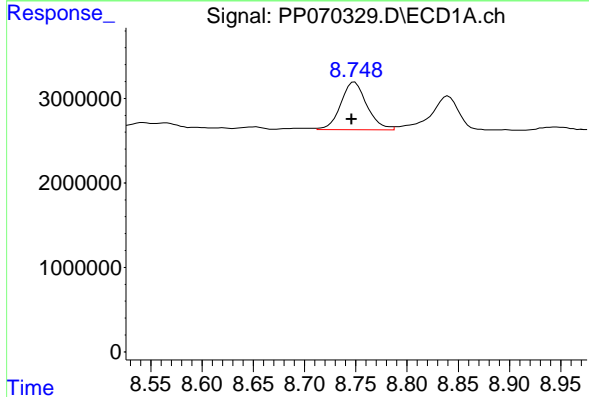
Manual Integrations
 APPROVED

Reviewed By :Yogesh Patel 03/07/2025
 Supervised By :mohammad ahmed 03/08/2025



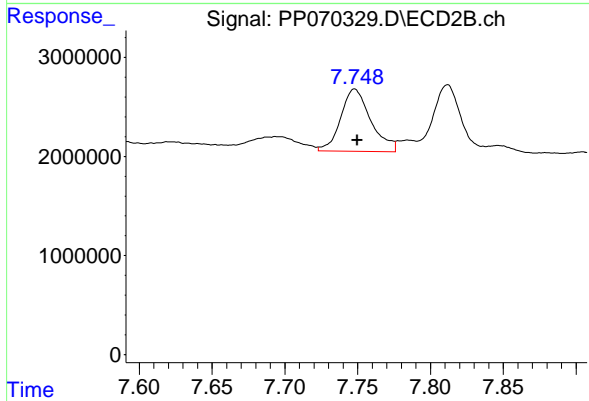
#30 AR-1254-5

R.T.: 6.923 min
 Delta R.T.: -0.004 min
 Response: 52378102
 Conc: 775.18 ng/ml



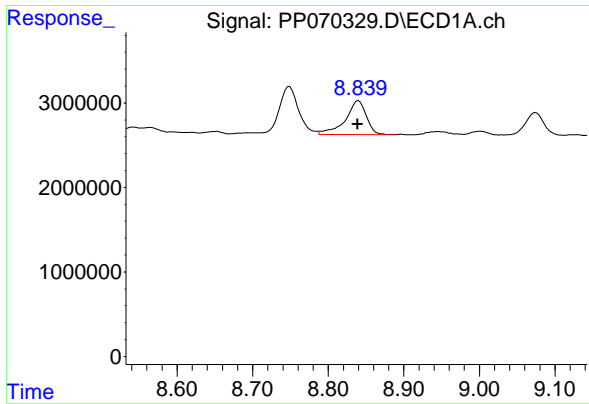
#41 AR-1268-1

R.T.: 8.749 min
 Delta R.T.: 0.003 min
 Response: 9916766
 Conc: 51.62 ng/ml



#41 AR-1268-1

R.T.: 7.748 min
 Delta R.T.: -0.002 min
 Response: 9039796
 Conc: 54.54 ng/ml



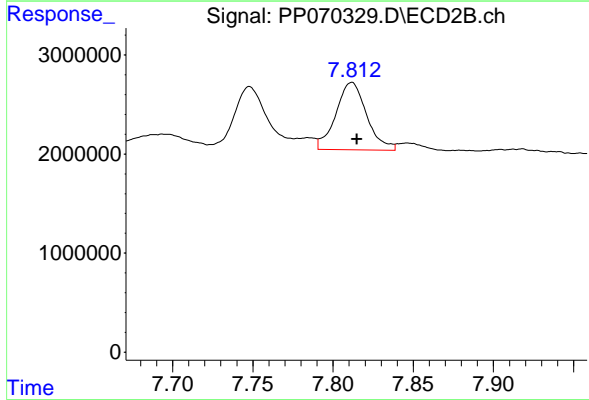
#42 AR-1268-2

R.T.: 8.840 min
 Delta R.T.: 0.001 min
 Response: 7752397
 Conc: 46.82 ng/ml

Instrument : ECD_P
 Client SampleId : K084-10C

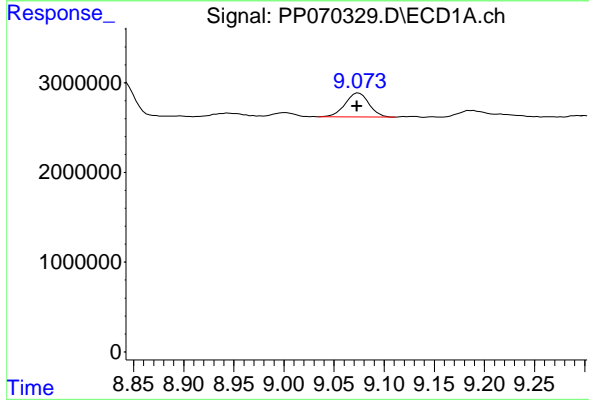
Manual Integrations
 APPROVED

Reviewed By :Yogesh Patel 03/07/2025
 Supervised By :mohammad ahmed 03/08/2025



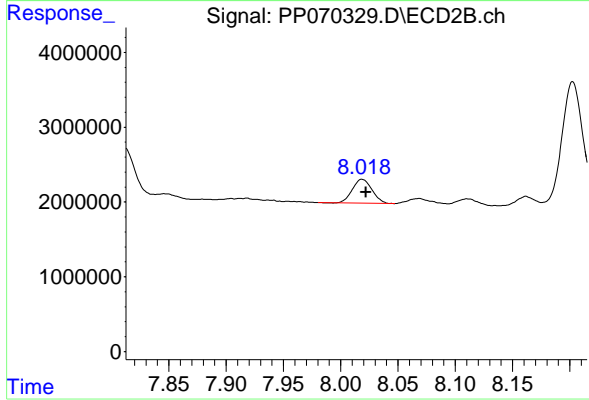
#42 AR-1268-2

R.T.: 7.812 min
 Delta R.T.: -0.003 min
 Response: 9108132
 Conc: 62.80 ng/ml



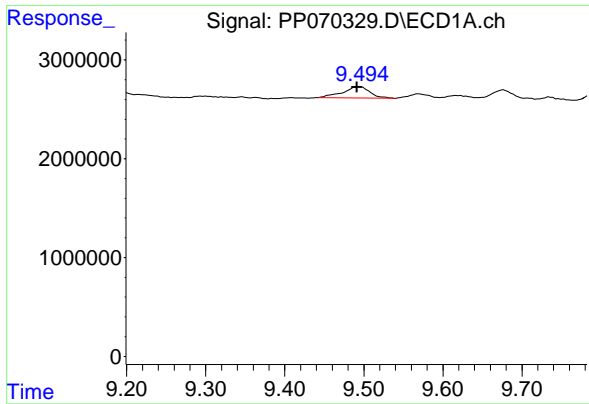
#43 AR-1268-3

R.T.: 9.075 min
 Delta R.T.: 0.002 min
 Response: 4414260
 Conc: 30.76 ng/ml



#43 AR-1268-3

R.T.: 8.019 min
 Delta R.T.: -0.003 min
 Response: 3794867
 Conc: 30.99 ng/ml



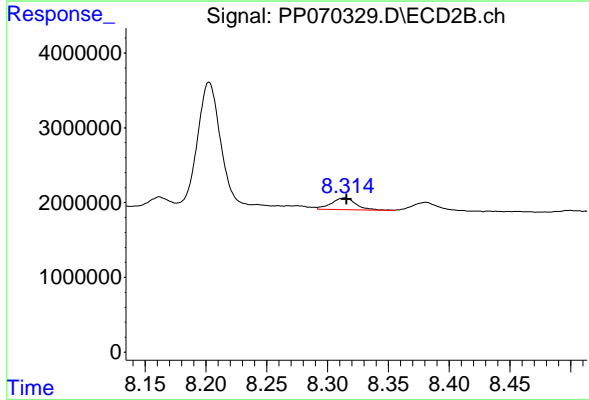
#44 AR-1268-4

R.T.: 9.495 min
 Delta R.T.: 0.003 min
 Response: 2735415
 Conc: 43.39 ng/ml

Instrument : ECD_P
 Client Sample Id : K084-10C

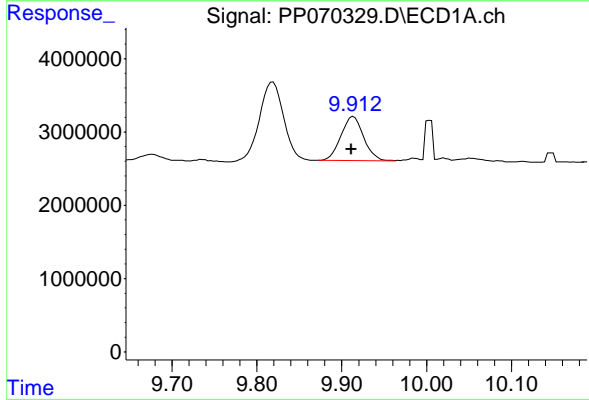
Manual Integrations
 APPROVED

Reviewed By :Yogesh Patel 03/07/2025
 Supervised By :mohammad ahmed 03/08/2025



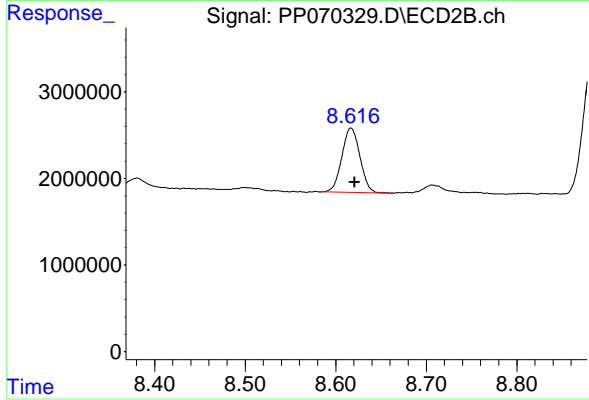
#44 AR-1268-4

R.T.: 8.314 min
 Delta R.T.: -0.002 min
 Response: 2175613
 Conc: 40.91 ng/ml



#45 AR-1268-5

R.T.: 9.914 min
 Delta R.T.: 0.002 min
 Response: 11210128
 Conc: 26.95 ng/ml



#45 AR-1268-5

R.T.: 8.617 min
 Delta R.T.: -0.004 min
 Response: 10279724
 Conc: 28.94 ng/ml