

Data Path : Z:\pestpcbsrv\HPCHEM1\ECD_P\Data\PP030725\
 Data File : PP070341.D
 Signal(s) : Signal #1: ECD1A.ch Signal #2: ECD2B.ch
 Acq On : 07 Mar 2025 09:48
 Operator : YP\AJ
 Sample : Q1436-02DL 2X
 Misc :
 ALS Vial : 8 Sample Multiplier: 1

Instrument :
 ECD_P
ClientSampleId :
 K084-8BDL

Manual Integrations
APPROVED

Reviewed By :Yogesh Patel 03/10/2025
 Supervised By :Ankita Jodhani 03/10/2025

Integration File signal 1: autoint1.e
 Integration File signal 2: autoint2.e
 Quant Time: Mar 07 11:04:32 2025
 Quant Method : Z:\pestpcbsrv\HPCHEM1\ECD_P\methods\PP022425.M
 Quant Title : GC EXTRACTABLES
 QLast Update : Tue Feb 25 05:10:19 2025
 Response via : Initial Calibration
 Integrator: ChemStation

Volume Inj. : 2 µl
 Signal #1 Phase : ZB-MR1 Signal #2 Phase: ZB-MR2
 Signal #1 Info : 30Mx0.32mmx 0.50µ Signal #2 Info : 30M x 0.32mm x 0.25µm

Compound	RT#1	RT#2	Resp#1	Resp#2	ng/ml	ng/ml

System Monitoring Compounds						
1) SA Tetrachlo...	4.525	3.827	19336111	12049705	13.175	12.604
2) SA Decachlor...	10.253	8.881	17598296	17203393	15.450	15.869
Target Compounds						
26) L6 AR-1254-1	6.527	5.721	23009093	22229265	405.802m	407.358
27) L6 AR-1254-2	6.744	5.870	52613169	32576782	600.021	668.303
28) L6 AR-1254-3	7.108	6.275	72462782	60135537	813.034	793.171
29) L6 AR-1254-4	7.390	6.534	66152250	10258279	887.817	199.345 #
30) L6 AR-1254-5	7.807	6.921	120.7E6	85558338	1796.664	1266.232 #
41) L9 AR-1268-1	8.746	7.745	77957111	65834392	405.829	397.193
42) L9 AR-1268-2	8.839	7.810	67181399	68247292	405.721	470.536
43) L9 AR-1268-3	9.071	8.017	33389226	29258596	232.671	238.915
44) L9 AR-1268-4	9.491	8.311	19256639	16991797	305.422	319.484
45) L9 AR-1268-5	9.911	8.614	94193438	82682602	226.470	232.765

(f)=RT Delta > 1/2 Window (#)=Amounts differ by > 25% (m)=manual int.

Data Path : Z:\pestpcbsrv\HPCHEM1\ECD_P\Data\PP030725\
 Data File : PP070341.D
 Signal(s) : Signal #1: ECD1A.ch Signal #2: ECD2B.ch
 Acq On : 07 Mar 2025 09:48
 Operator : YP\AJ
 Sample : Q1436-02DL 2X
 Misc :
 ALS Vial : 8 Sample Multiplier: 1

Instrument :

ECD_P

ClientSampleId :

K084-8BDL

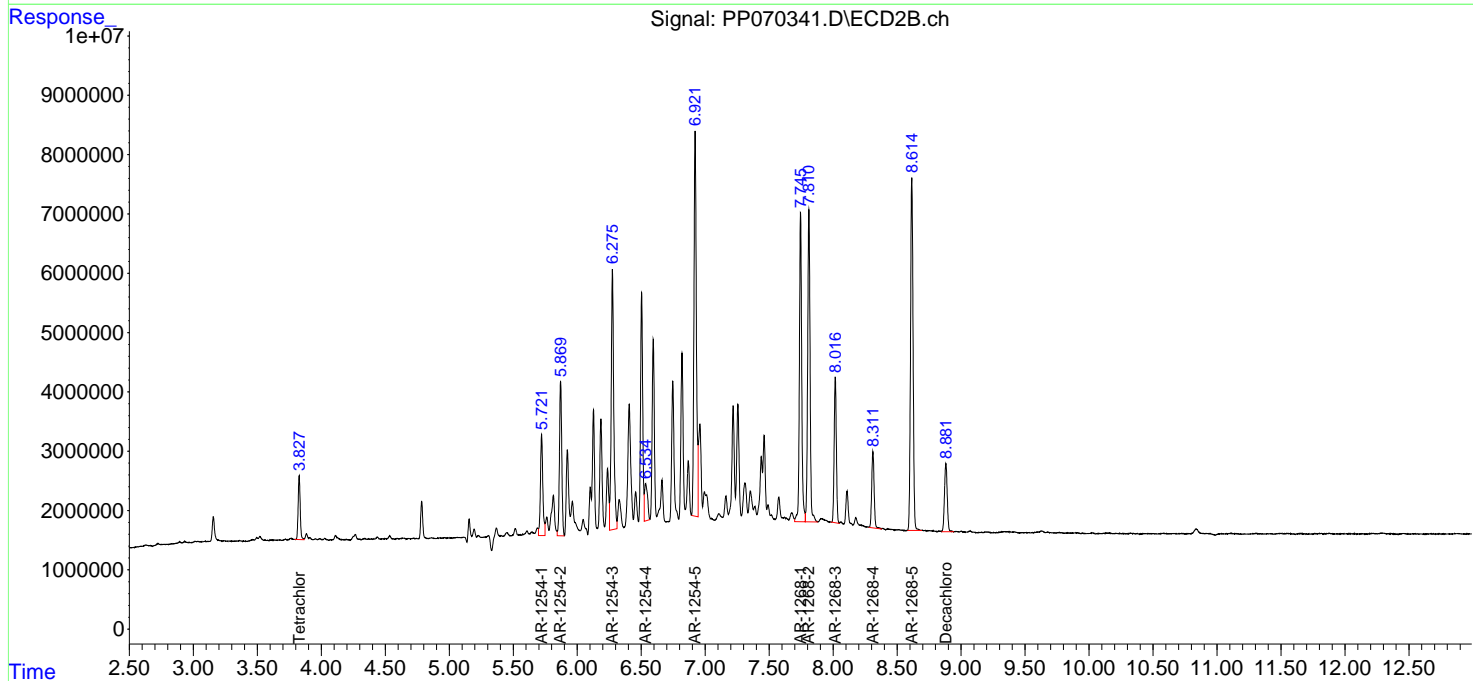
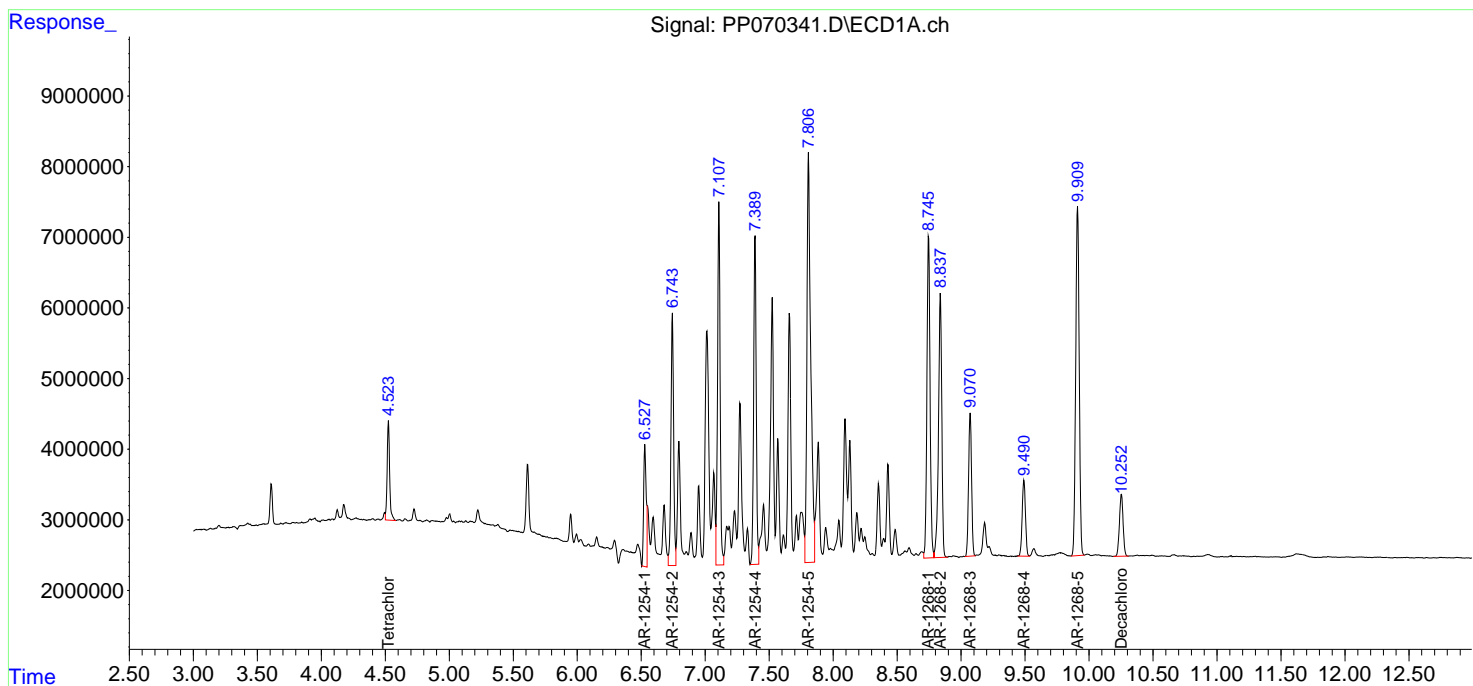
Manual Integrations

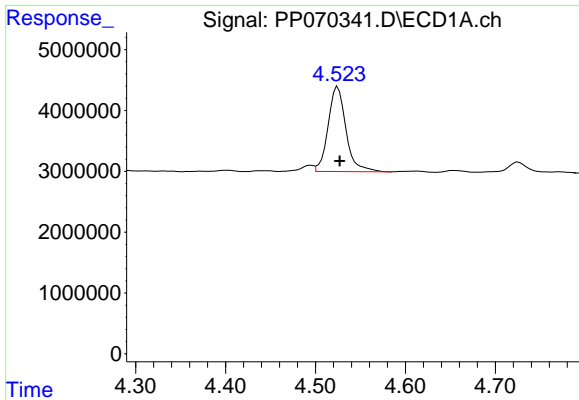
APPROVED

Reviewed By :Yogesh Patel 03/10/2025
 Supervised By :Ankita Jodhani 03/10/2025

Integration File signal 1: autoint1.e
 Integration File signal 2: autoint2.e
 Quant Time: Mar 07 11:04:32 2025
 Quant Method : Z:\pestpcbsrv\HPCHEM1\ECD_P\methods\PP022425.M
 Quant Title : GC EXTRACTABLES
 QLast Update : Tue Feb 25 05:10:19 2025
 Response via : Initial Calibration
 Integrator: ChemStation

Volume Inj. : 2 µl
 Signal #1 Phase : ZB-MR1 Signal #2 Phase: ZB-MR2
 Signal #1 Info : 30Mx0.32mmx 0.50µ Signal #2 Info : 30M x 0.32mm x 0.25µm



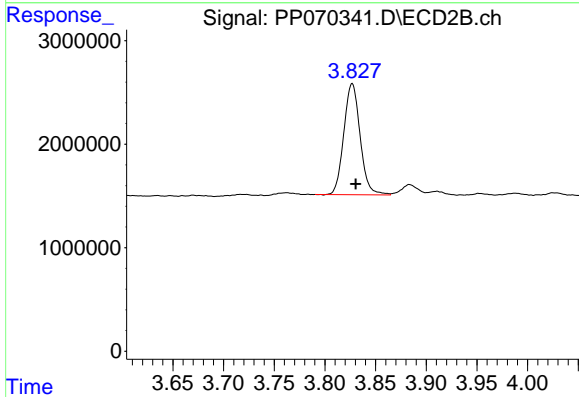


#1 Tetrachloro-m-xylene
 R.T.: 4.525 min
 Delta R.T.: -0.002 min
 Response: 19336111
 Conc: 13.18 ng/ml

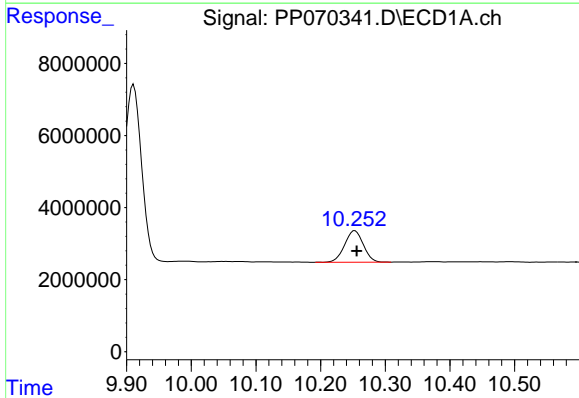
Instrument :
 ECD_P
 ClientSampleId :
 K084-8BDL

Manual Integrations
 APPROVED

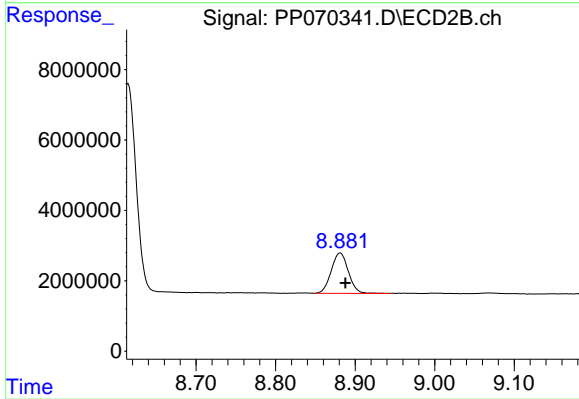
Reviewed By :Yogesh Patel 03/10/2025
 Supervised By :Ankita Jodhani 03/10/2025



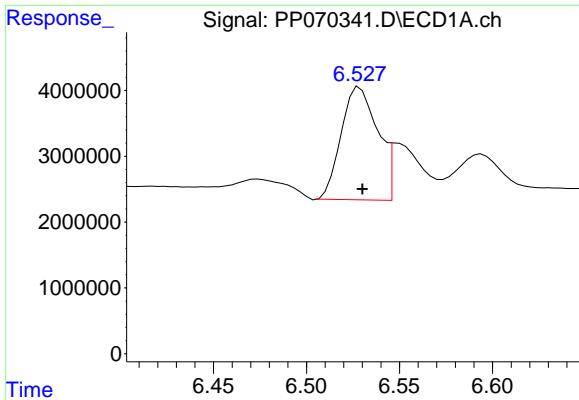
#1 Tetrachloro-m-xylene
 R.T.: 3.827 min
 Delta R.T.: -0.003 min
 Response: 12049705
 Conc: 12.60 ng/ml



#2 Decachlorobiphenyl
 R.T.: 10.253 min
 Delta R.T.: -0.003 min
 Response: 17598296
 Conc: 15.45 ng/ml



#2 Decachlorobiphenyl
 R.T.: 8.881 min
 Delta R.T.: -0.007 min
 Response: 17203393
 Conc: 15.87 ng/ml



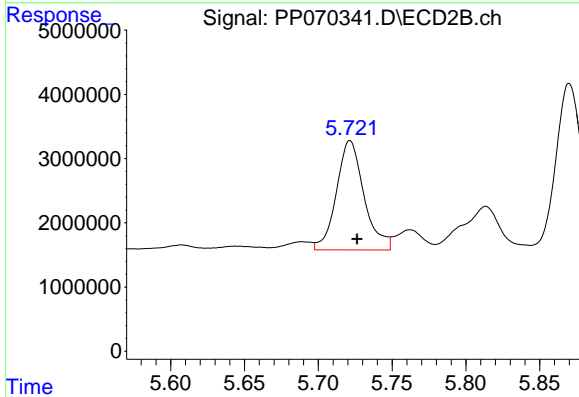
#26 AR-1254-1

R.T.: 6.527 min
 Delta R.T.: -0.003 min
 Response: 23009093
 Conc: 405.80 ng/ml

Instrument :
 ECD_P
 ClientSampleId :
 K084-8BDL

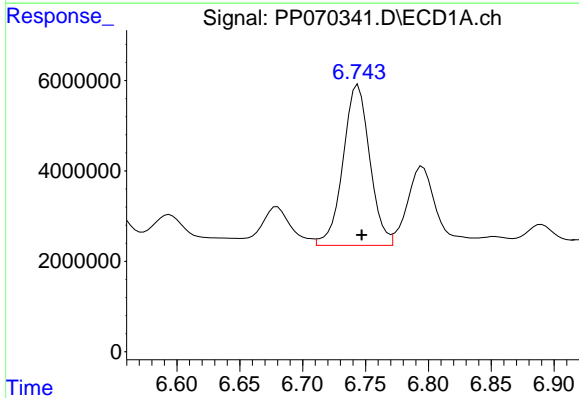
Manual Integrations
 APPROVED

Reviewed By :Yogesh Patel 03/10/2025
 Supervised By :Ankita Jodhani 03/10/2025



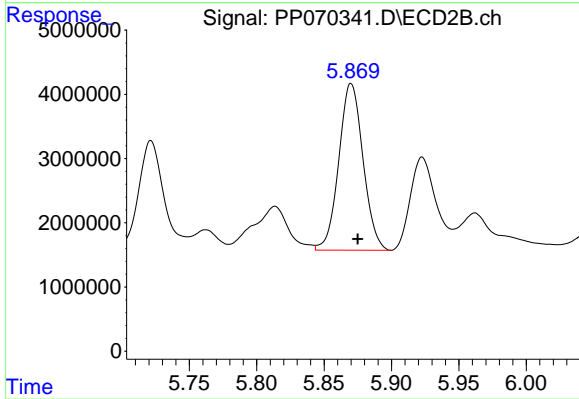
#26 AR-1254-1

R.T.: 5.721 min
 Delta R.T.: -0.005 min
 Response: 22229265
 Conc: 407.36 ng/ml



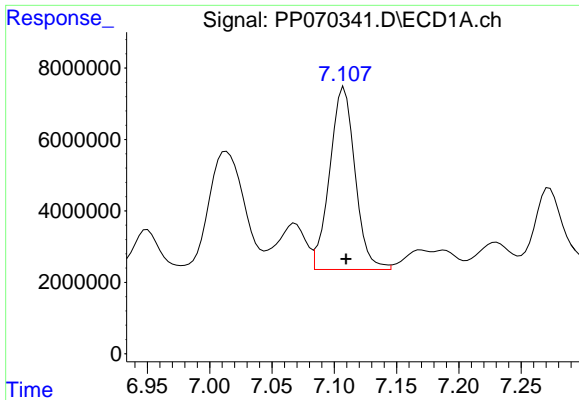
#27 AR-1254-2

R.T.: 6.744 min
 Delta R.T.: -0.003 min
 Response: 52613169
 Conc: 600.02 ng/ml



#27 AR-1254-2

R.T.: 5.870 min
 Delta R.T.: -0.005 min
 Response: 32576782
 Conc: 668.30 ng/ml



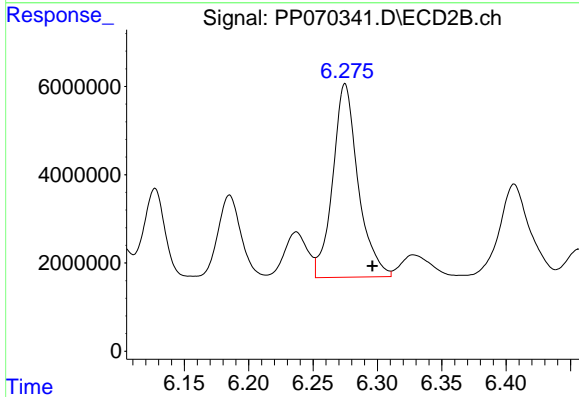
#28 AR-1254-3

R.T.: 7.108 min
 Delta R.T.: -0.002 min
 Response: 72462782
 Conc: 813.03 ng/ml

Instrument :
 ECD_P
 ClientSampleId :
 K084-8BDL

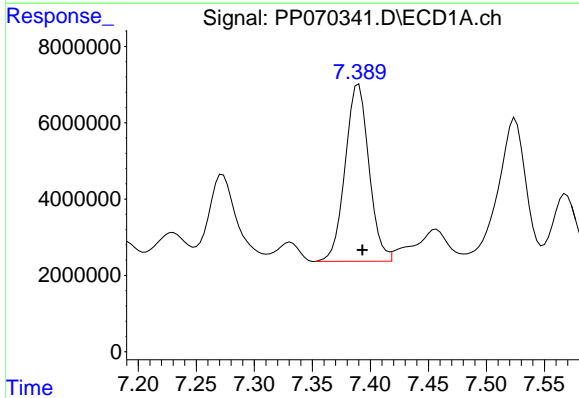
Manual Integrations
 APPROVED

Reviewed By :Yogesh Patel 03/10/2025
 Supervised By :Ankita Jodhani 03/10/2025



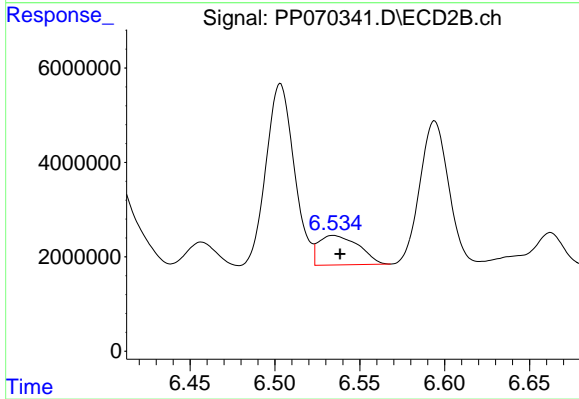
#28 AR-1254-3

R.T.: 6.275 min
 Delta R.T.: -0.021 min
 Response: 60135537
 Conc: 793.17 ng/ml



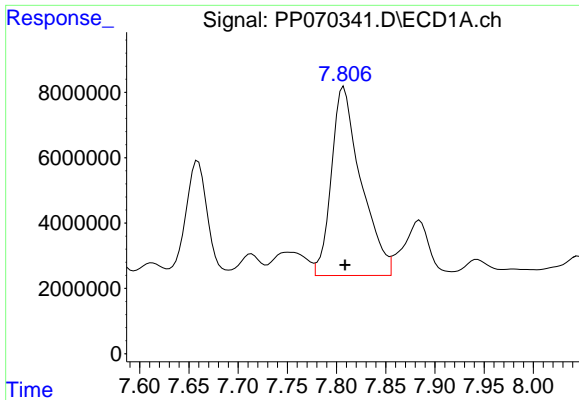
#29 AR-1254-4

R.T.: 7.390 min
 Delta R.T.: -0.003 min
 Response: 66152250
 Conc: 887.82 ng/ml



#29 AR-1254-4

R.T.: 6.534 min
 Delta R.T.: -0.004 min
 Response: 10258279
 Conc: 199.34 ng/ml



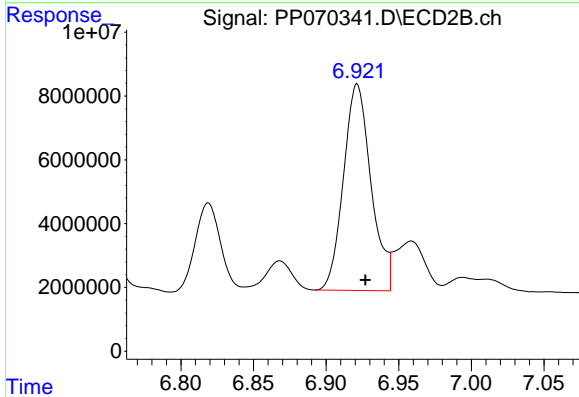
#30 AR-1254-5

R.T.: 7.807 min
 Delta R.T.: -0.001 min
 Response: 120668080
 Conc: 1796.66 ng/ml

Instrument :
 ECD_P
 ClientSampleId :
 K084-8BDL

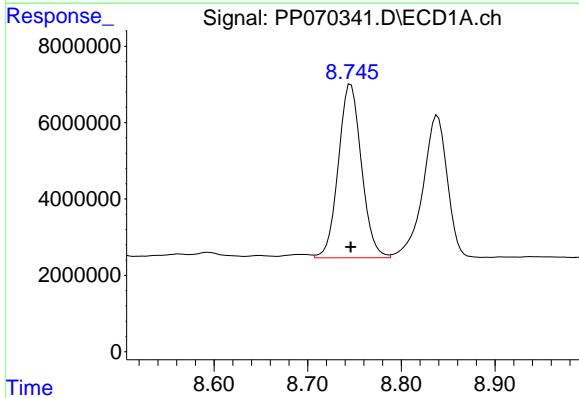
Manual Integrations
 APPROVED

Reviewed By :Yogesh Patel 03/10/2025
 Supervised By :Ankita Jodhani 03/10/2025



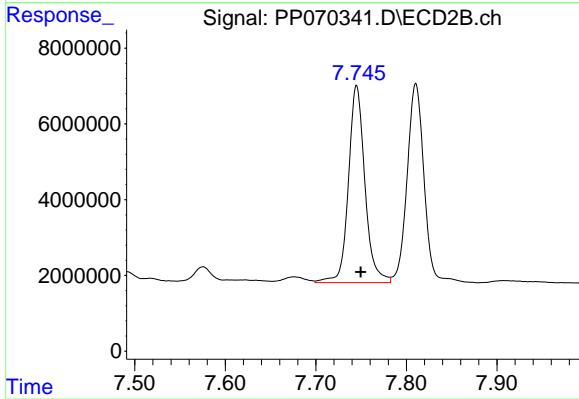
#30 AR-1254-5

R.T.: 6.921 min
 Delta R.T.: -0.006 min
 Response: 85558338
 Conc: 1266.23 ng/ml



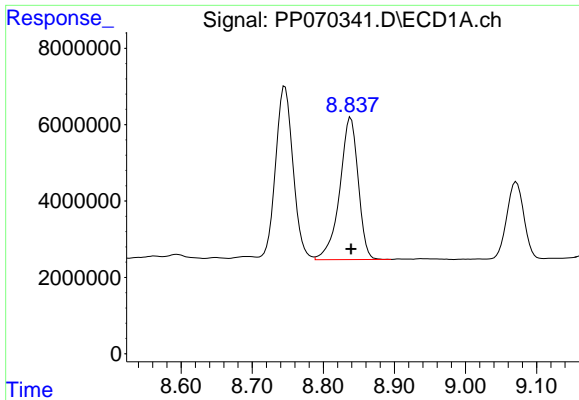
#41 AR-1268-1

R.T.: 8.746 min
 Delta R.T.: 0.000 min
 Response: 77957111
 Conc: 405.83 ng/ml



#41 AR-1268-1

R.T.: 7.745 min
 Delta R.T.: -0.005 min
 Response: 65834392
 Conc: 397.19 ng/ml

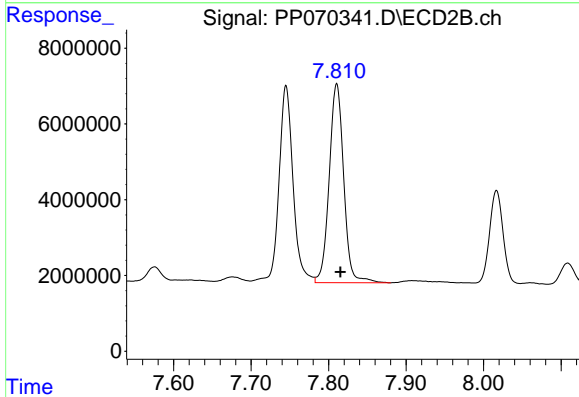


#42 AR-1268-2

R.T.: 8.839 min
 Delta R.T.: 0.000 min
 Response: 67181399
 Conc: 405.72 ng/ml

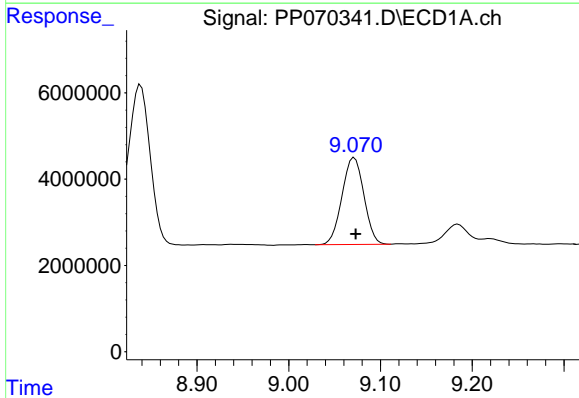
Instrument : ECD_P
 ClientSampleId : K084-8BDL

Manual Integrations
APPROVED
 Reviewed By :Yogesh Patel 03/10/2025
 Supervised By :Ankita Jodhani 03/10/2025



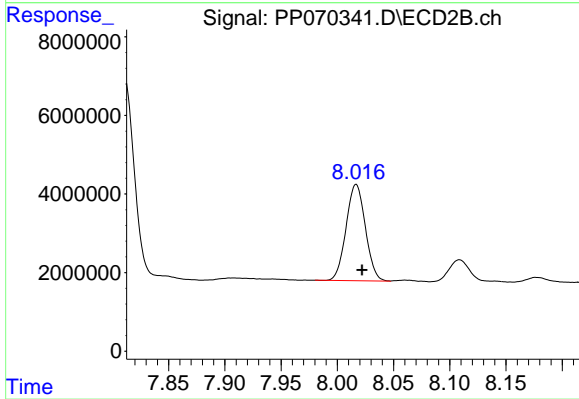
#42 AR-1268-2

R.T.: 7.810 min
 Delta R.T.: -0.005 min
 Response: 68247292
 Conc: 470.54 ng/ml



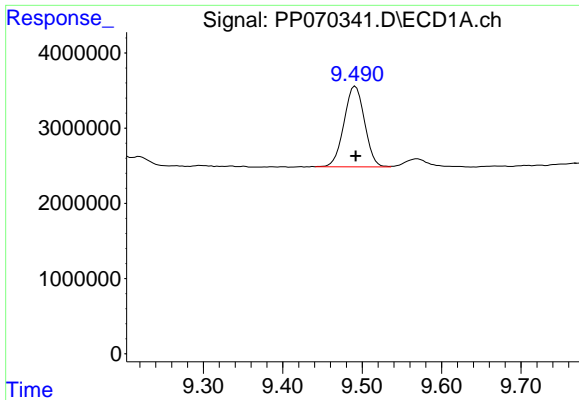
#43 AR-1268-3

R.T.: 9.071 min
 Delta R.T.: -0.001 min
 Response: 33389226
 Conc: 232.67 ng/ml



#43 AR-1268-3

R.T.: 8.017 min
 Delta R.T.: -0.005 min
 Response: 29258596
 Conc: 238.92 ng/ml



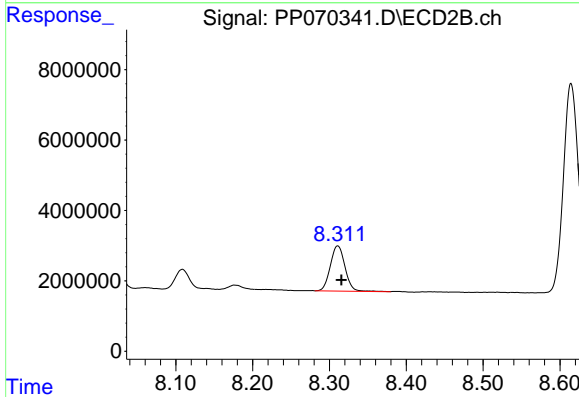
#44 AR-1268-4

R.T.: 9.491 min
 Delta R.T.: 0.000 min
 Response: 19256639
 Conc: 305.42 ng/ml

Instrument :
 ECD_P
 ClientSampleId :
 K084-8BDL

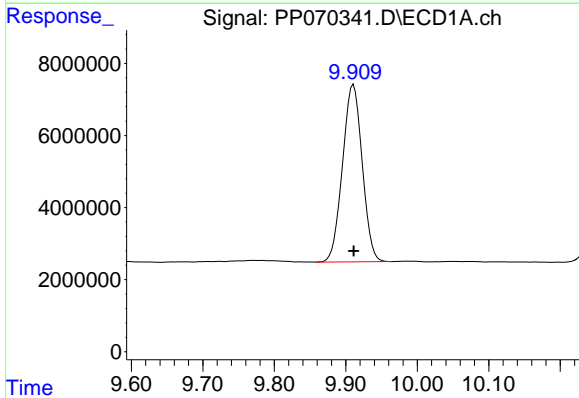
Manual Integrations
 APPROVED

Reviewed By :Yogesh Patel 03/10/2025
 Supervised By :Ankita Jodhani 03/10/2025



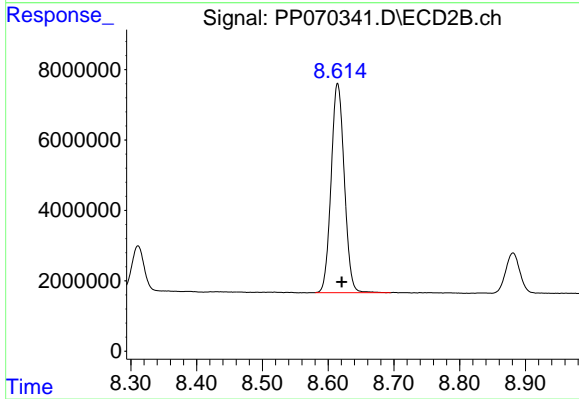
#44 AR-1268-4

R.T.: 8.311 min
 Delta R.T.: -0.005 min
 Response: 16991797
 Conc: 319.48 ng/ml



#45 AR-1268-5

R.T.: 9.911 min
 Delta R.T.: 0.000 min
 Response: 94193438
 Conc: 226.47 ng/ml



#45 AR-1268-5

R.T.: 8.614 min
 Delta R.T.: -0.006 min
 Response: 82682602
 Conc: 232.76 ng/ml