

Data Path : Z:\pestpcbsrv\HPCHEM1\ECD_P\Data\PP030725\
 Data File : PP070342.D
 Signal(s) : Signal #1: ECD1A.ch Signal #2: ECD2B.ch
 Acq On : 07 Mar 2025 10:04
 Operator : YP\AJ
 Sample : Q1436-08DL 2X
 Misc :
 ALS Vial : 9 Sample Multiplier: 1

Instrument :
 ECD_P
ClientSampleId :
 K084-10BDL

Manual Integrations
APPROVED
 Reviewed By :Yogesh Patel 03/10/2025
 Supervised By :Ankita Jodhani 03/10/2025

Integration File signal 1: autoint1.e
 Integration File signal 2: autoint2.e
 Quant Time: Mar 07 11:05:12 2025
 Quant Method : Z:\pestpcbsrv\HPCHEM1\ECD_P\methods\PP022425.M
 Quant Title : GC EXTRACTABLES
 QLast Update : Tue Feb 25 05:10:19 2025
 Response via : Initial Calibration
 Integrator: ChemStation

Volume Inj. : 2 µl
 Signal #1 Phase : ZB-MR1 Signal #2 Phase: ZB-MR2
 Signal #1 Info : 30Mx0.32mmx 0.50µ Signal #2 Info : 30M x 0.32mm x 0.25µm

Compound	RT#1	RT#2	Resp#1	Resp#2	ng/ml	ng/ml

System Monitoring Compounds						
1) SA Tetrachlo...	4.526	3.829	20587177	12744782	14.028	13.331
2) SA Decachlor...	10.257	8.884	27325598	25987262	23.990	23.971
Target Compounds						
26) L6 AR-1254-1	6.528	5.724	65938526	62695132	1162.930m	1148.907
27) L6 AR-1254-2	6.746	5.872	143.6E6	89526699	1637.580	1836.613
28) L6 AR-1254-3	7.110	6.277	204.0E6	179.5E6	2288.591	2366.927
29) L6 AR-1254-4	7.392	6.552	179.0E6	50887741	2401.851	988.879 #
30) L6 AR-1254-5	7.823	6.923	499.5E6	434.1E6	7437.744	6424.877
41) L9 AR-1268-1	8.749	7.747	141.8E6	113.1E6	738.439	682.349
42) L9 AR-1268-2	8.841	7.812	119.2E6	136.6E6	719.942	941.835 #
43) L9 AR-1268-3	9.075	8.020	55026530	50483328	383.449	412.229
44) L9 AR-1268-4	9.494	8.314	49633310	44010799	787.215	827.503
45) L9 AR-1268-5	9.913	8.618	196.9E6	171.5E6	473.374	482.692

(f)=RT Delta > 1/2 Window (#)=Amounts differ by > 25% (m)=manual int.

Data Path : Z:\pestpcbsrv\HPCHEM1\ECD_P\Data\PP030725\
 Data File : PP070342.D
 Signal(s) : Signal #1: ECD1A.ch Signal #2: ECD2B.ch
 Acq On : 07 Mar 2025 10:04
 Operator : YP\AJ
 Sample : Q1436-08DL 2X
 Misc :
 ALS Vial : 9 Sample Multiplier: 1

Instrument :

ECD_P

ClientSampleId :

K084-10BDL

Manual Integrations

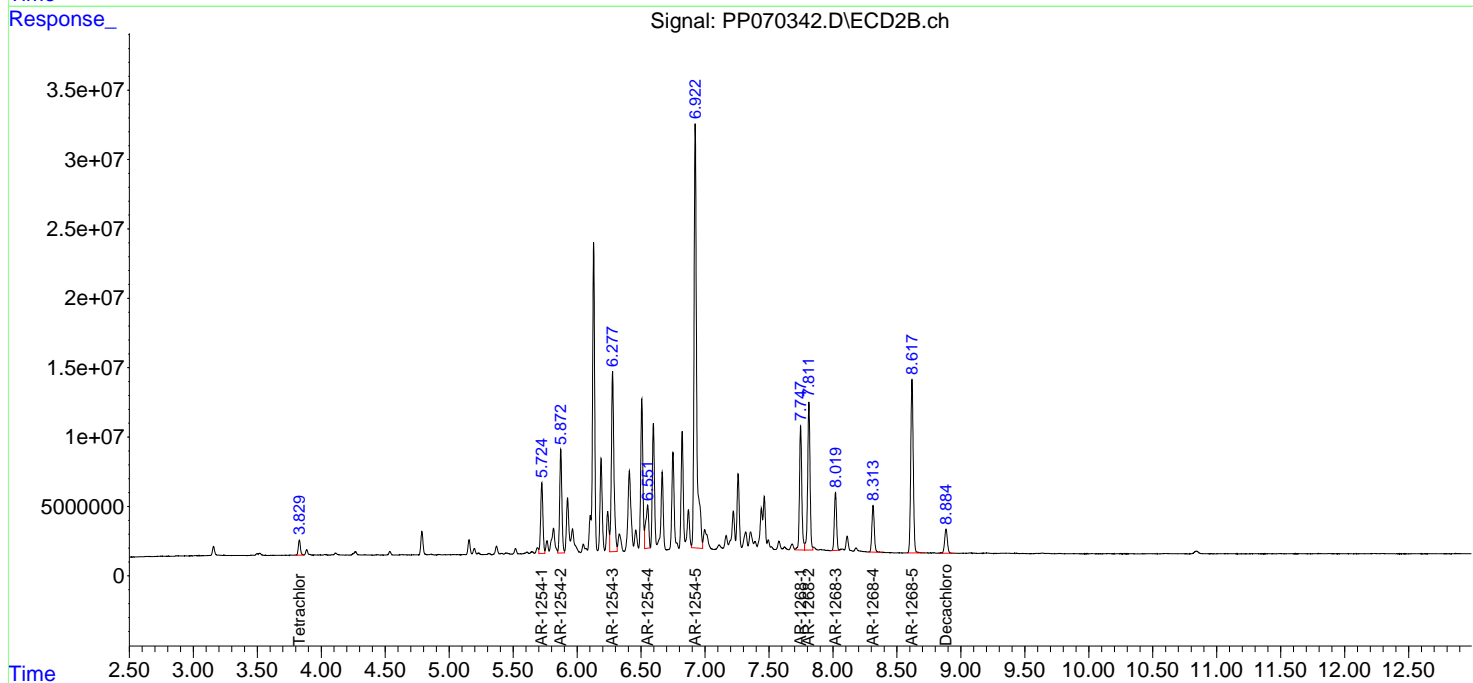
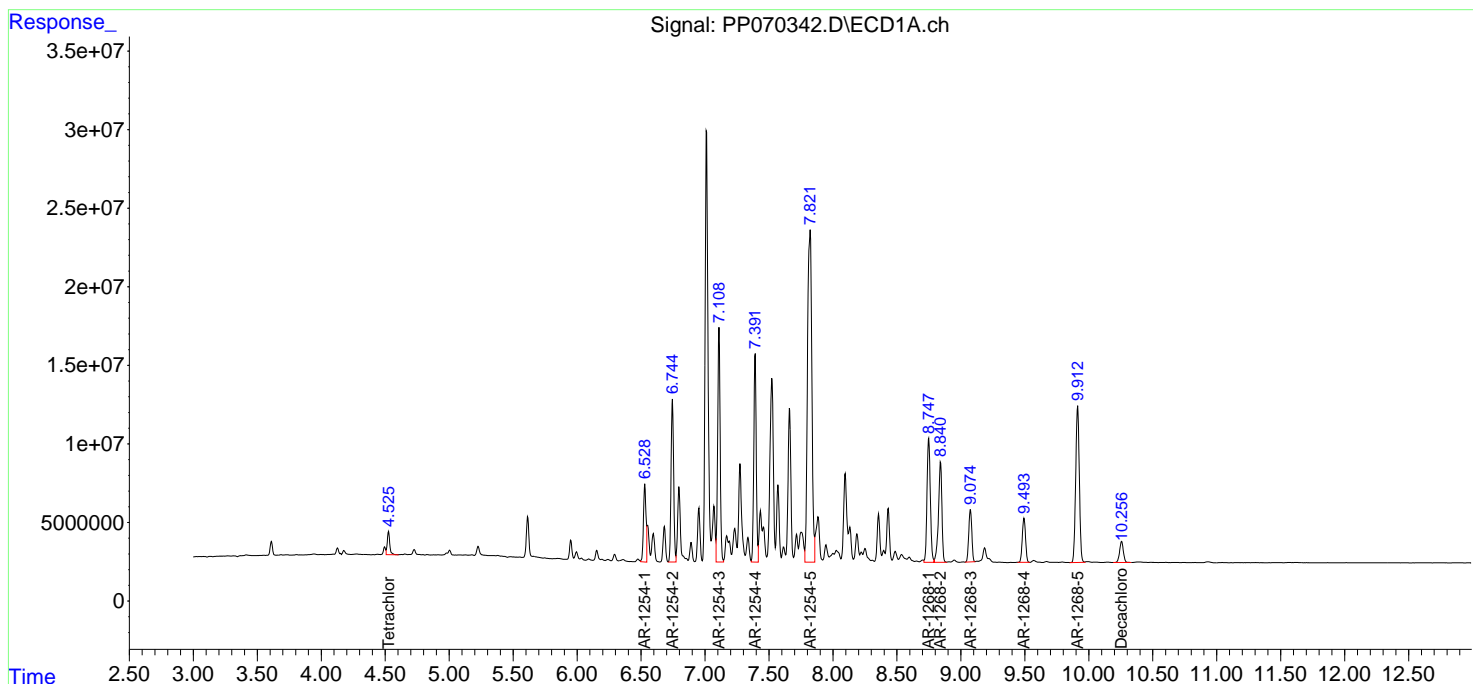
APPROVED

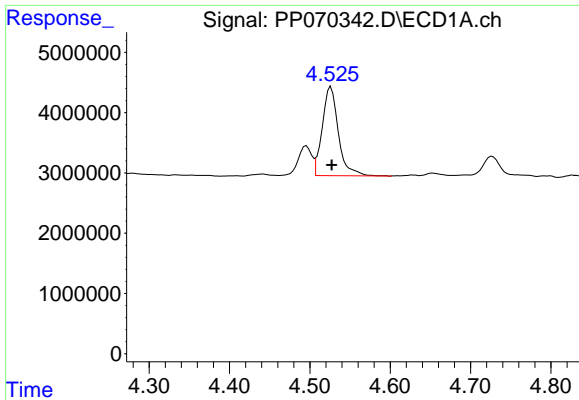
Reviewed By :Yogesh Patel 03/10/2025

Supervised By :Ankita Jodhani 03/10/2025

Integration File signal 1: autoint1.e
 Integration File signal 2: autoint2.e
 Quant Time: Mar 07 11:05:12 2025
 Quant Method : Z:\pestpcbsrv\HPCHEM1\ECD_P\methods\PP022425.M
 Quant Title : GC EXTRACTABLES
 QLast Update : Tue Feb 25 05:10:19 2025
 Response via : Initial Calibration
 Integrator: ChemStation

Volume Inj. : 2 µl
 Signal #1 Phase : ZB-MR1 Signal #2 Phase: ZB-MR2
 Signal #1 Info : 30Mx0.32mmx 0.50µ Signal #2 Info : 30M x 0.32mm x 0.25µm



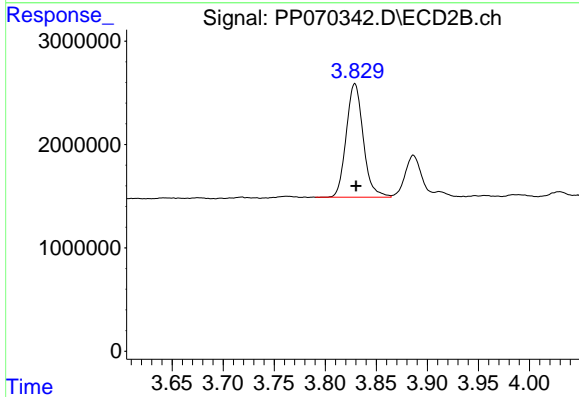


#1 Tetrachloro-m-xylene
 R.T.: 4.526 min
 Delta R.T.: 0.000 min
 Response: 20587177
 Conc: 14.03 ng/ml

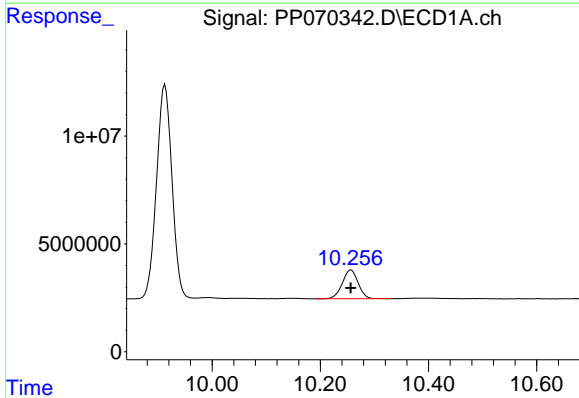
Instrument :
 ECD_P
 ClientSampleId :
 K084-10BDL

Manual Integrations
 APPROVED

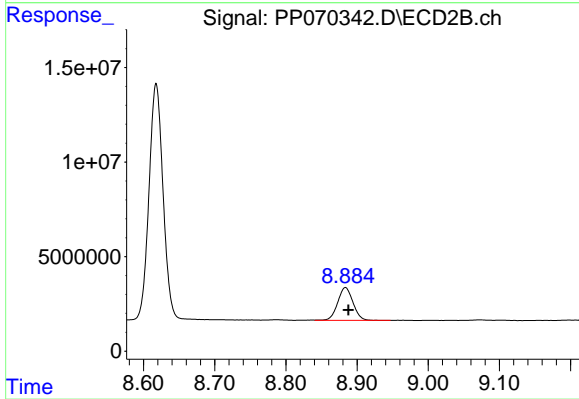
Reviewed By :Yogesh Patel 03/10/2025
 Supervised By :Ankita Jodhani 03/10/2025



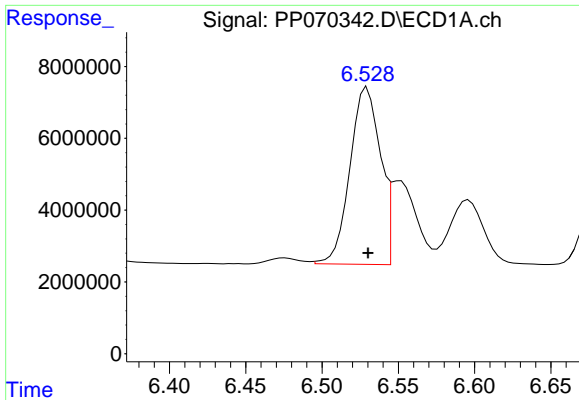
#1 Tetrachloro-m-xylene
 R.T.: 3.829 min
 Delta R.T.: -0.001 min
 Response: 12744782
 Conc: 13.33 ng/ml



#2 Decachlorobiphenyl
 R.T.: 10.257 min
 Delta R.T.: 0.000 min
 Response: 27325598
 Conc: 23.99 ng/ml



#2 Decachlorobiphenyl
 R.T.: 8.884 min
 Delta R.T.: -0.004 min
 Response: 25987262
 Conc: 23.97 ng/ml



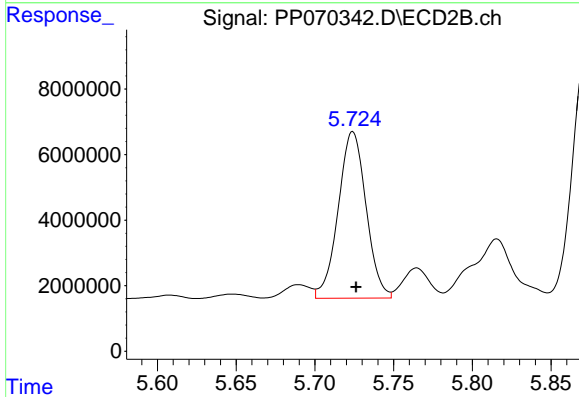
#26 AR-1254-1

R.T.: 6.528 min
 Delta R.T.: -0.002 min
 Response: 65938526
 Conc: 1162.93 ng/ml

Instrument :
 ECD_P
 ClientSampleId :
 K084-10BDL

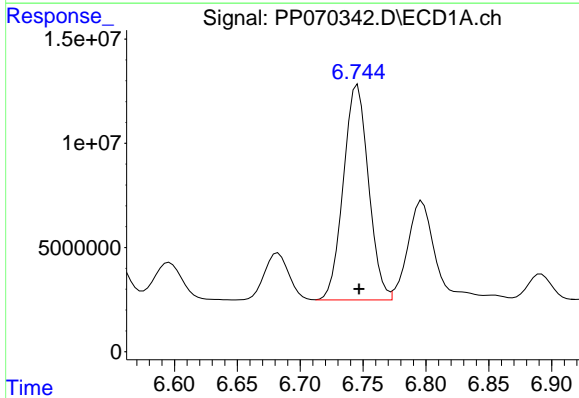
Manual Integrations
 APPROVED

Reviewed By :Yogesh Patel 03/10/2025
 Supervised By :Ankita Jodhani 03/10/2025



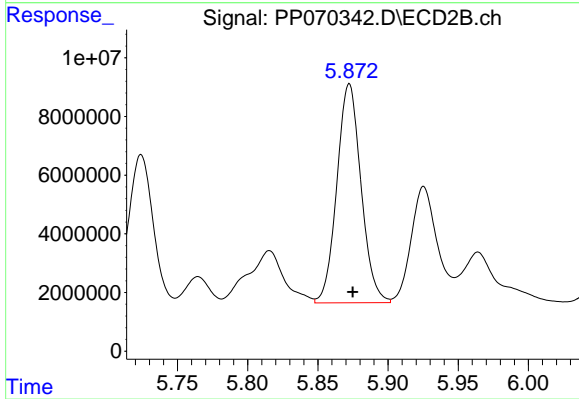
#26 AR-1254-1

R.T.: 5.724 min
 Delta R.T.: -0.002 min
 Response: 62695132
 Conc: 1148.91 ng/ml



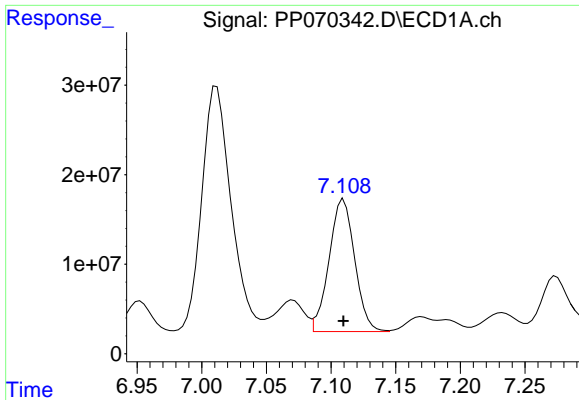
#27 AR-1254-2

R.T.: 6.746 min
 Delta R.T.: -0.001 min
 Response: 143592025
 Conc: 1637.58 ng/ml



#27 AR-1254-2

R.T.: 5.872 min
 Delta R.T.: -0.002 min
 Response: 89526699
 Conc: 1836.61 ng/ml



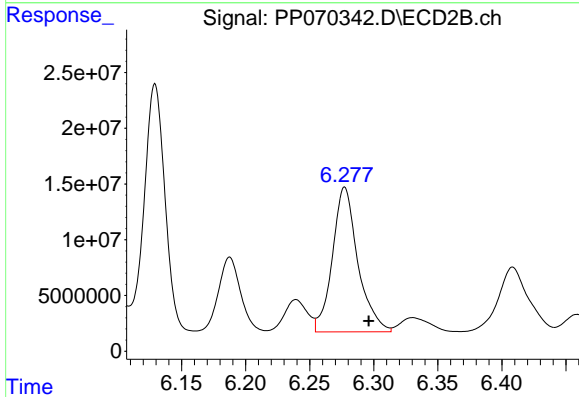
#28 AR-1254-3

R.T.: 7.110 min
 Delta R.T.: 0.000 min
 Response: 203973839
 Conc: 2288.59 ng/ml

Instrument :
 ECD_P
 ClientSampleId :
 K084-10BDL

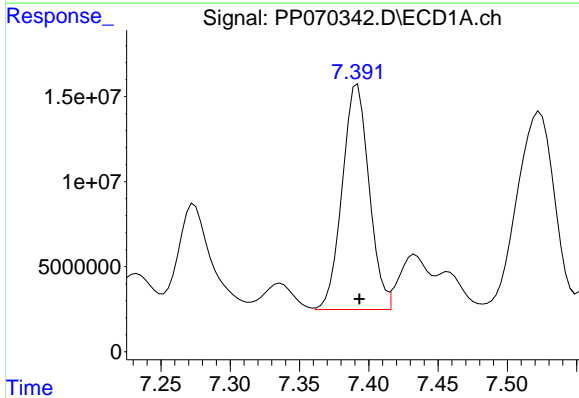
Manual Integrations
 APPROVED

Reviewed By :Yogesh Patel 03/10/2025
 Supervised By :Ankita Jodhani 03/10/2025



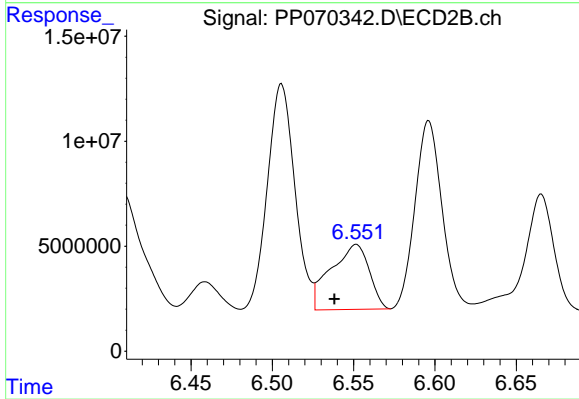
#28 AR-1254-3

R.T.: 6.277 min
 Delta R.T.: -0.019 min
 Response: 179452354
 Conc: 2366.93 ng/ml



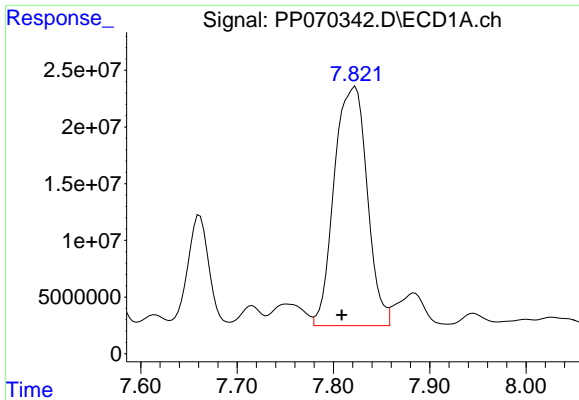
#29 AR-1254-4

R.T.: 7.392 min
 Delta R.T.: -0.001 min
 Response: 178964598
 Conc: 2401.85 ng/ml



#29 AR-1254-4

R.T.: 6.552 min
 Delta R.T.: 0.013 min
 Response: 50887741
 Conc: 988.88 ng/ml



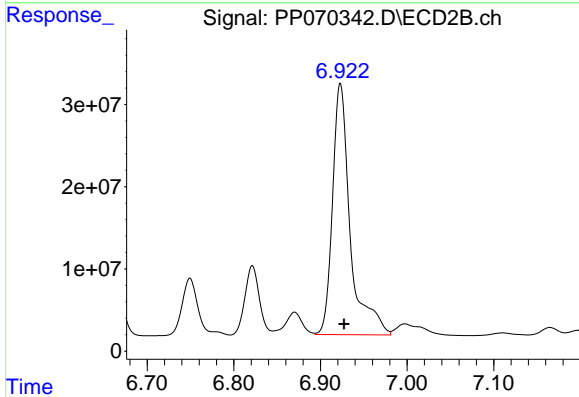
#30 AR-1254-5

R.T.: 7.823 min
 Delta R.T.: 0.014 min
 Response: 499535987
 Conc: 7437.74 ng/ml

Instrument :
 ECD_P
 ClientSampleId :
 K084-10BDL

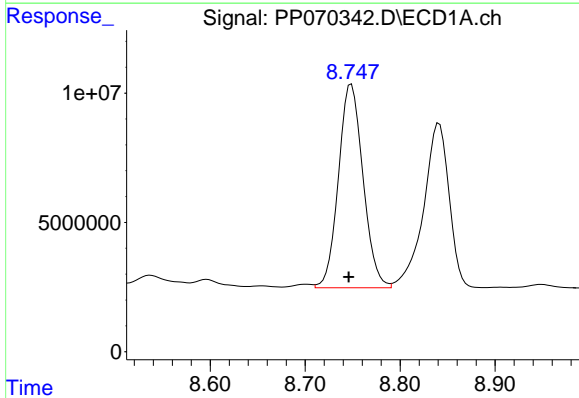
Manual Integrations
 APPROVED

Reviewed By :Yogesh Patel 03/10/2025
 Supervised By :Ankita Jodhani 03/10/2025



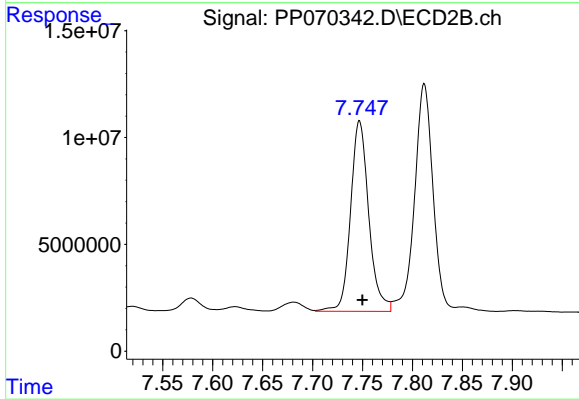
#30 AR-1254-5

R.T.: 6.923 min
 Delta R.T.: -0.004 min
 Response: 434123953
 Conc: 6424.88 ng/ml



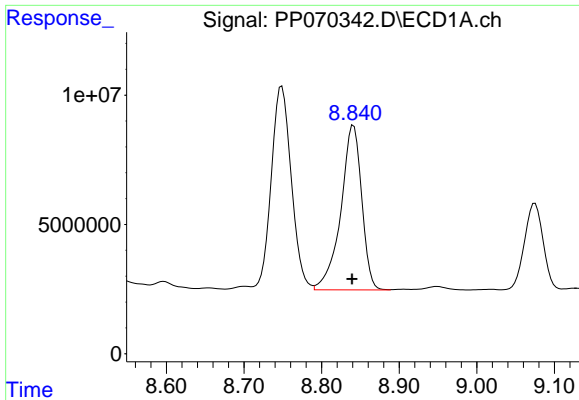
#41 AR-1268-1

R.T.: 8.749 min
 Delta R.T.: 0.003 min
 Response: 141849263
 Conc: 738.44 ng/ml



#41 AR-1268-1

R.T.: 7.747 min
 Delta R.T.: -0.003 min
 Response: 113098639
 Conc: 682.35 ng/ml



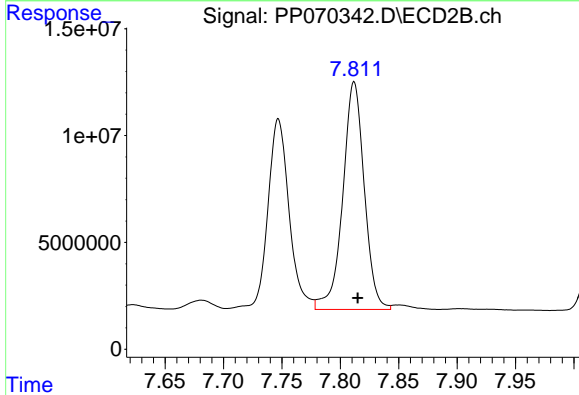
#42 AR-1268-2

R.T.: 8.841 min
 Delta R.T.: 0.002 min
 Response: 119211873
 Conc: 719.94 ng/ml

Instrument : ECD_P
 ClientSampleId : K084-10BDL

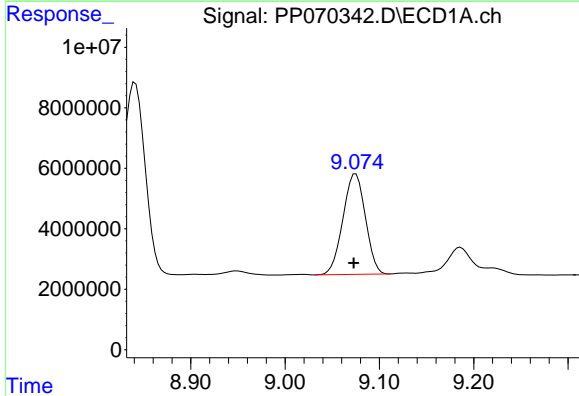
Manual Integrations
 APPROVED

Reviewed By :Yogesh Patel 03/10/2025
 Supervised By :Ankita Jodhani 03/10/2025



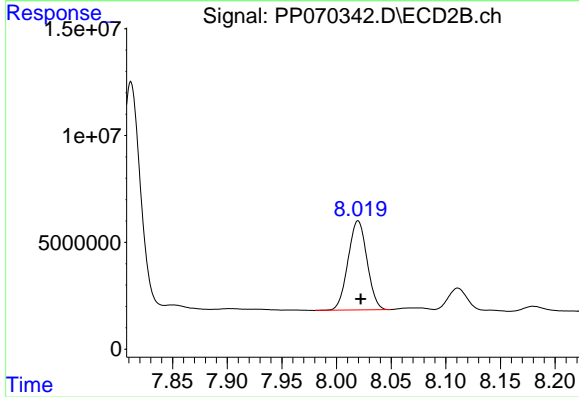
#42 AR-1268-2

R.T.: 7.812 min
 Delta R.T.: -0.003 min
 Response: 136605207
 Conc: 941.83 ng/ml



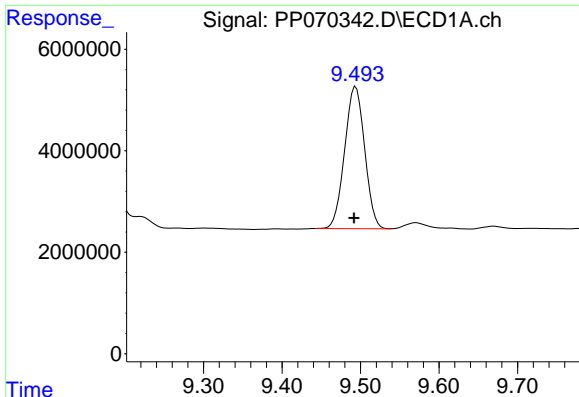
#43 AR-1268-3

R.T.: 9.075 min
 Delta R.T.: 0.002 min
 Response: 55026530
 Conc: 383.45 ng/ml



#43 AR-1268-3

R.T.: 8.020 min
 Delta R.T.: -0.002 min
 Response: 50483328
 Conc: 412.23 ng/ml



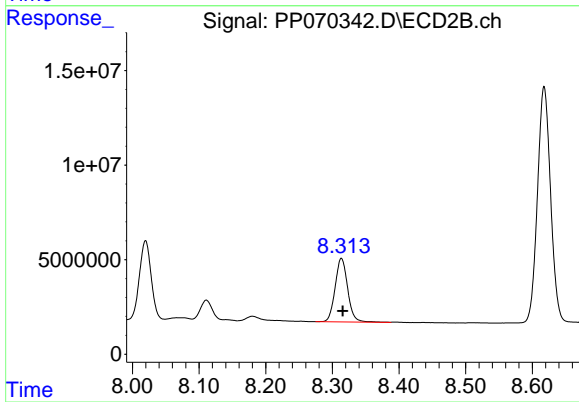
#44 AR-1268-4

R.T.: 9.494 min
 Delta R.T.: 0.002 min
 Response: 49633310
 Conc: 787.22 ng/ml

Instrument :
 ECD_P
 ClientSampleId :
 K084-10BDL

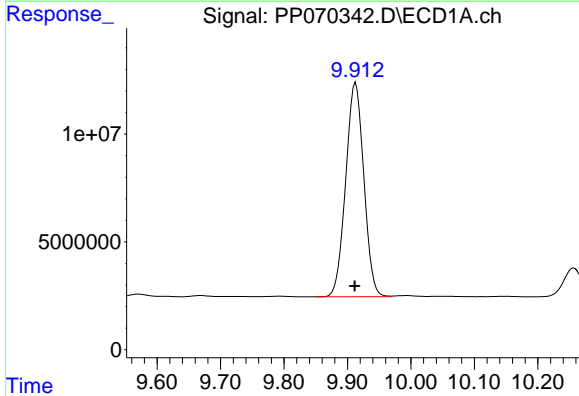
Manual Integrations
 APPROVED

Reviewed By :Yogesh Patel 03/10/2025
 Supervised By :Ankita Jodhani 03/10/2025



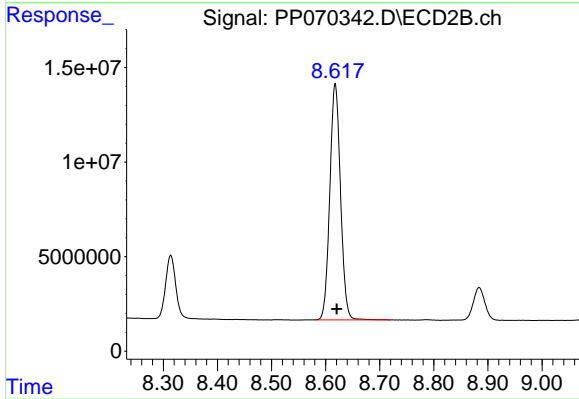
#44 AR-1268-4

R.T.: 8.314 min
 Delta R.T.: -0.002 min
 Response: 44010799
 Conc: 827.50 ng/ml



#45 AR-1268-5

R.T.: 9.913 min
 Delta R.T.: 0.002 min
 Response: 196886135
 Conc: 473.37 ng/ml



#45 AR-1268-5

R.T.: 8.618 min
 Delta R.T.: -0.003 min
 Response: 171461564
 Conc: 482.69 ng/ml