

Data Path : Z:\pestpcbsrv\HPCHEM1\ECD_P\Data\PP030725\
 Data File : PP070343.D
 Signal(s) : Signal #1: ECD1A.ch Signal #2: ECD2B.ch
 Acq On : 07 Mar 2025 10:20
 Operator : YP\AJ
 Sample : Q1436-08DL2 10X
 Misc :
 ALS Vial : 10 Sample Multiplier: 1

Instrument :
 ECD_P
ClientSampleId :
 K084-10BDL2

Manual Integrations
APPROVED
 Reviewed By :Yogesh Patel 03/10/2025
 Supervised By :Ankita Jodhani 03/10/2025

Integration File signal 1: autoint1.e
 Integration File signal 2: autoint2.e
 Quant Time: Mar 07 11:05:53 2025
 Quant Method : Z:\pestpcbsrv\HPCHEM1\ECD_P\methods\PP022425.M
 Quant Title : GC EXTRACTABLES
 QLast Update : Tue Feb 25 05:10:19 2025
 Response via : Initial Calibration
 Integrator: ChemStation

Volume Inj. : 2 µl
 Signal #1 Phase : ZB-MR1 Signal #2 Phase: ZB-MR2
 Signal #1 Info : 30Mx0.32mmx 0.50µ Signal #2 Info : 30M x 0.32mm x 0.25µm

Compound	RT#1	RT#2	Resp#1	Resp#2	ng/ml	ng/ml

System Monitoring Compounds						
1) SA Tetrachlo...	4.525	3.827	4761727	3310598	3.245	3.463
2) SA Decachlor...	10.253	8.883	6424602	6523485	5.640	6.017
Target Compounds						
26) L6 AR-1254-1	6.527	5.722	18410805	16756035	324.704m	307.059
27) L6 AR-1254-2	6.744	5.871	36807542	23755285	419.768	487.333
28) L6 AR-1254-3	7.108	6.275	51452987	45083523	577.304	594.639
29) L6 AR-1254-4	7.390	6.549	45119563	12507190	605.541	243.047 #
30) L6 AR-1254-5	7.818	6.921	115.9E6	95407729	1725.660	1412.000
41) L9 AR-1268-1	8.746	7.745	35059624	27984511	182.513	168.837
42) L9 AR-1268-2	8.839	7.810	28769913	32003619	173.747	220.651 #
43) L9 AR-1268-3	9.071	8.017	13322417	12088790	92.837	98.713
44) L9 AR-1268-4	9.491	8.312	11832635	10794936	187.673	202.969
45) L9 AR-1268-5	9.910	8.616	47440603	41350319	114.062	116.408

(f)=RT Delta > 1/2 Window (#)=Amounts differ by > 25% (m)=manual int.

Data Path : Z:\pestpcbsrv\HPCHEM1\ECD_P\Data\PP030725\
 Data File : PP070343.D
 Signal(s) : Signal #1: ECD1A.ch Signal #2: ECD2B.ch
 Acq On : 07 Mar 2025 10:20
 Operator : YP\AJ
 Sample : Q1436-08DL2 10X
 Misc :
 ALS Vial : 10 Sample Multiplier: 1

Instrument :

ECD_P

ClientSampleId :

K084-10BDL2

Manual Integrations

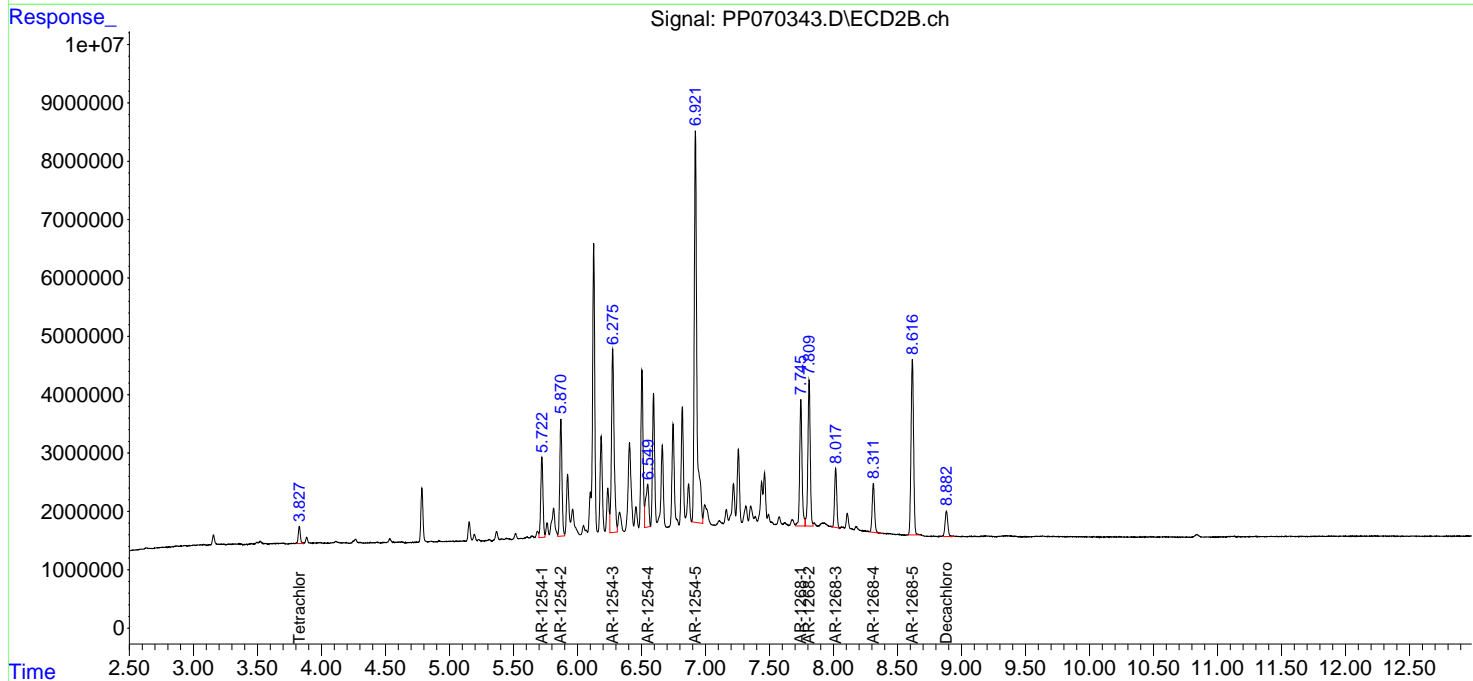
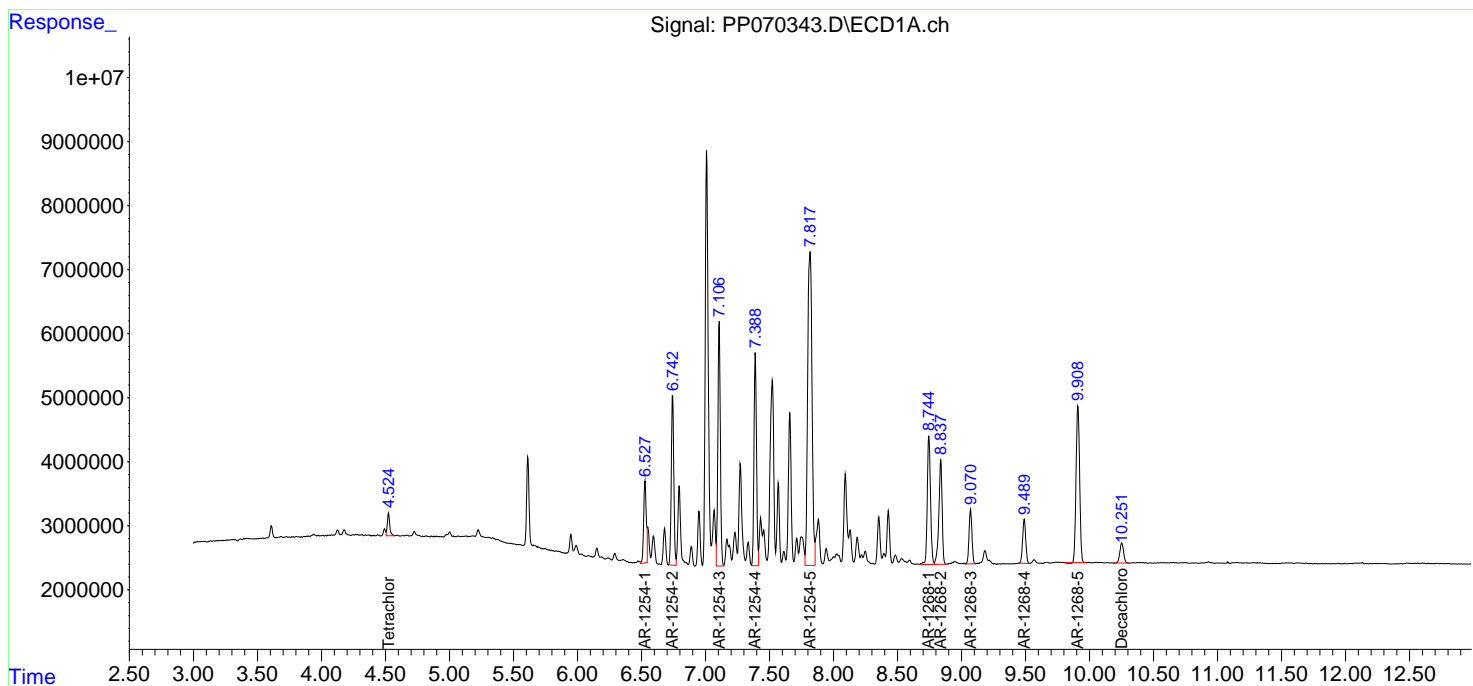
APPROVED

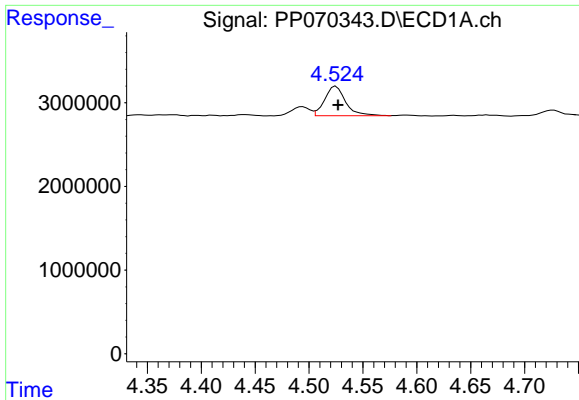
Reviewed By :Yogesh Patel 03/10/2025

Supervised By :Ankita Jodhani 03/10/2025

Integration File signal 1: autoint1.e
 Integration File signal 2: autoint2.e
 Quant Time: Mar 07 11:05:53 2025
 Quant Method : Z:\pestpcbsrv\HPCHEM1\ECD_P\methods\PP022425.M
 Quant Title : GC EXTRACTABLES
 QLast Update : Tue Feb 25 05:10:19 2025
 Response via : Initial Calibration
 Integrator: ChemStation

Volume Inj. : 2 µl
 Signal #1 Phase : ZB-MR1 Signal #2 Phase: ZB-MR2
 Signal #1 Info : 30Mx0.32mmx 0.50µ Signal #2 Info : 30M x 0.32mm x 0.25µm



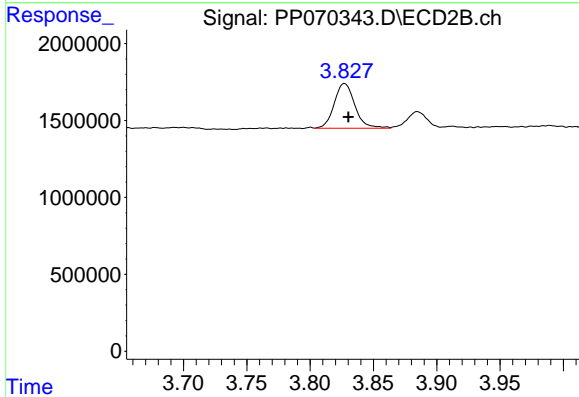


#1 Tetrachloro-m-xylene
 R.T.: 4.525 min
 Delta R.T.: -0.002 min
 Response: 4761727
 Conc: 3.24 ng/ml

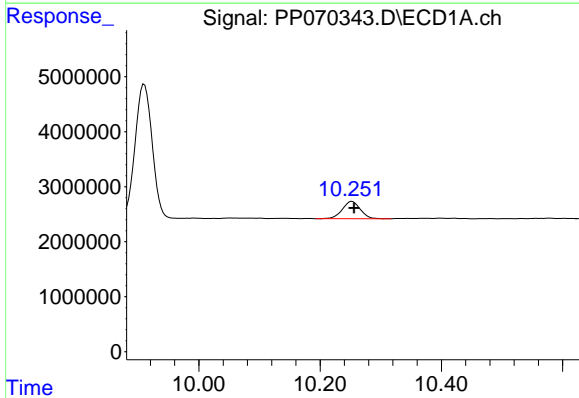
Instrument :
 ECD_P
 ClientSampleId :
 K084-10BDL2

Manual Integrations
 APPROVED

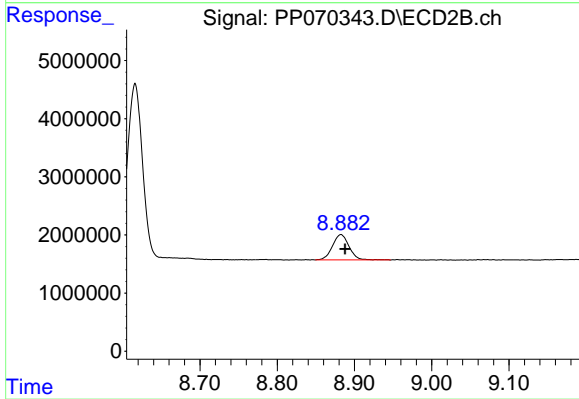
Reviewed By :Yogesh Patel 03/10/2025
 Supervised By :Ankita Jodhani 03/10/2025



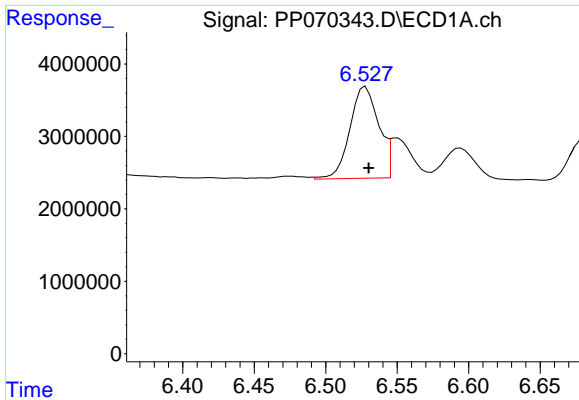
#1 Tetrachloro-m-xylene
 R.T.: 3.827 min
 Delta R.T.: -0.003 min
 Response: 3310598
 Conc: 3.46 ng/ml



#2 Decachlorobiphenyl
 R.T.: 10.253 min
 Delta R.T.: -0.003 min
 Response: 6424602
 Conc: 5.64 ng/ml



#2 Decachlorobiphenyl
 R.T.: 8.883 min
 Delta R.T.: -0.005 min
 Response: 6523485
 Conc: 6.02 ng/ml



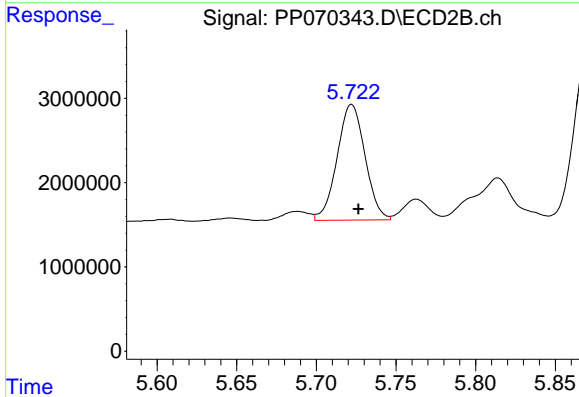
#26 AR-1254-1

R.T.: 6.527 min
 Delta R.T.: -0.004 min
 Response: 18410805
 Conc: 324.70 ng/ml

Instrument :
 ECD_P
 ClientSampleId :
 K084-10BDL2

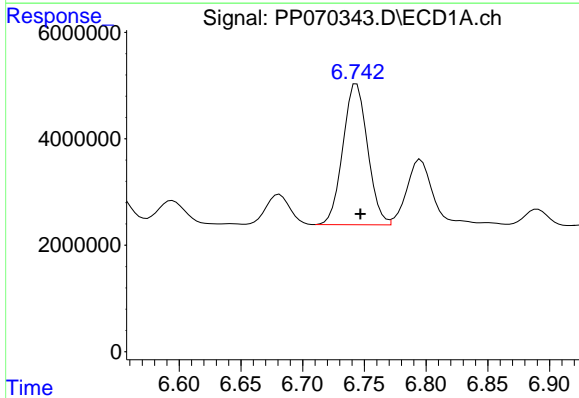
Manual Integrations
 APPROVED

Reviewed By :Yogesh Patel 03/10/2025
 Supervised By :Ankita Jodhani 03/10/2025



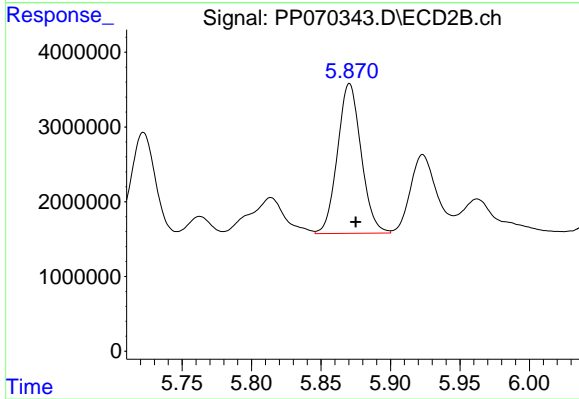
#26 AR-1254-1

R.T.: 5.722 min
 Delta R.T.: -0.004 min
 Response: 16756035
 Conc: 307.06 ng/ml



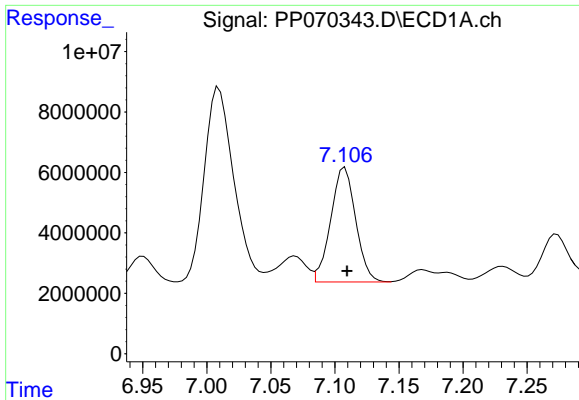
#27 AR-1254-2

R.T.: 6.744 min
 Delta R.T.: -0.003 min
 Response: 36807542
 Conc: 419.77 ng/ml



#27 AR-1254-2

R.T.: 5.871 min
 Delta R.T.: -0.004 min
 Response: 23755285
 Conc: 487.33 ng/ml



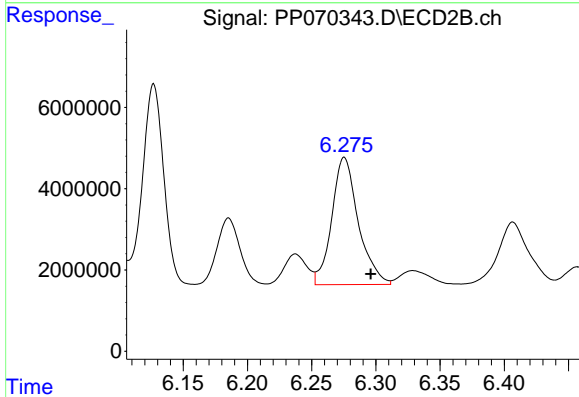
#28 AR-1254-3

R.T.: 7.108 min
 Delta R.T.: -0.002 min
 Response: 51452987
 Conc: 577.30 ng/ml

Instrument :
 ECD_P
 ClientSampleId :
 K084-10BDL2

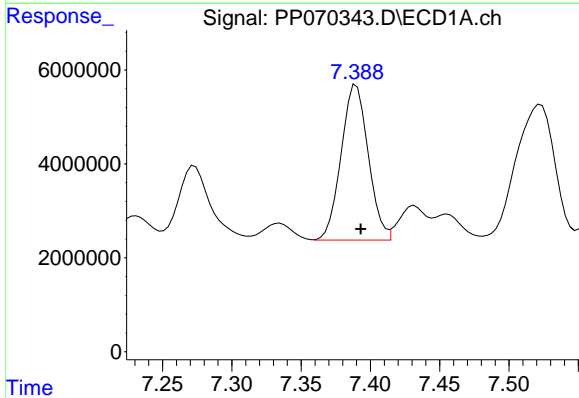
Manual Integrations
 APPROVED

Reviewed By :Yogesh Patel 03/10/2025
 Supervised By :Ankita Jodhani 03/10/2025



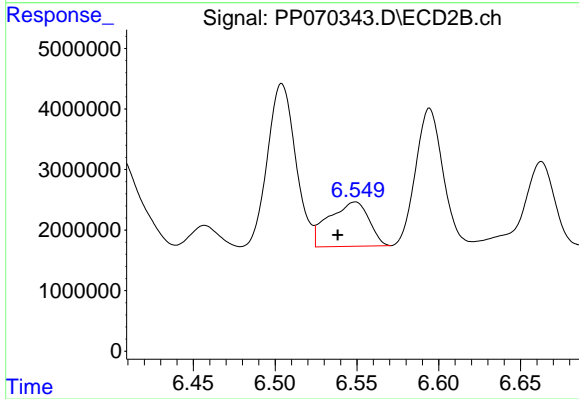
#28 AR-1254-3

R.T.: 6.275 min
 Delta R.T.: -0.021 min
 Response: 45083523
 Conc: 594.64 ng/ml



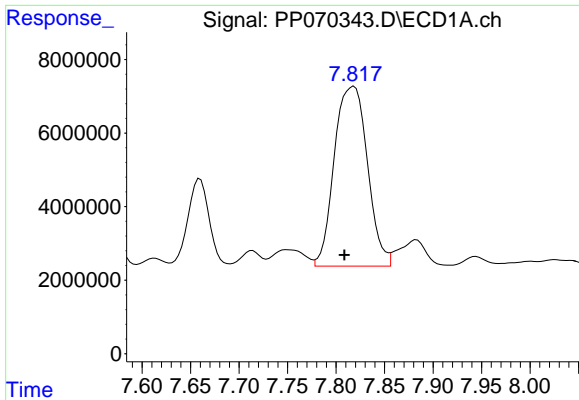
#29 AR-1254-4

R.T.: 7.390 min
 Delta R.T.: -0.003 min
 Response: 45119563
 Conc: 605.54 ng/ml



#29 AR-1254-4

R.T.: 6.549 min
 Delta R.T.: 0.011 min
 Response: 12507190
 Conc: 243.05 ng/ml



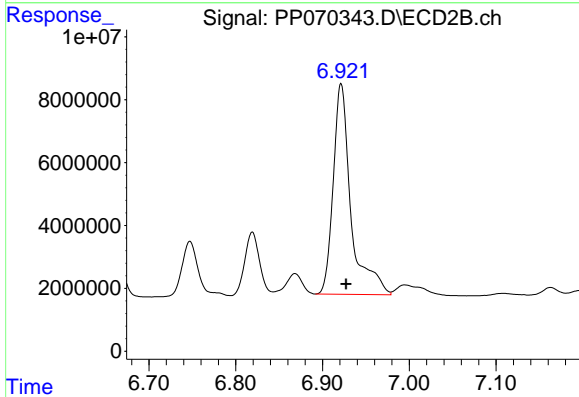
#30 AR-1254-5

R.T.: 7.818 min
 Delta R.T.: 0.010 min
 Response: 115899294
 Conc: 1725.66 ng/ml

Instrument :
 ECD_P
 ClientSampleId :
 K084-10BDL2

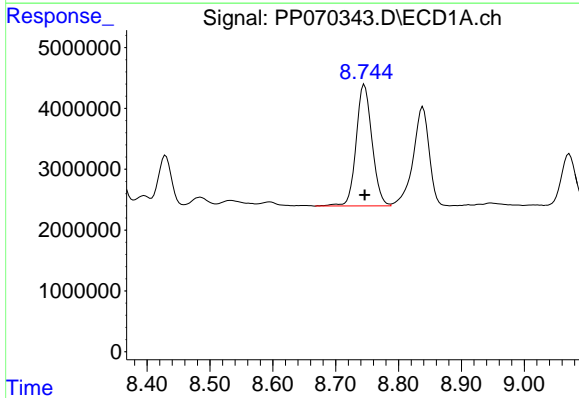
Manual Integrations
 APPROVED

Reviewed By :Yogesh Patel 03/10/2025
 Supervised By :Ankita Jodhani 03/10/2025



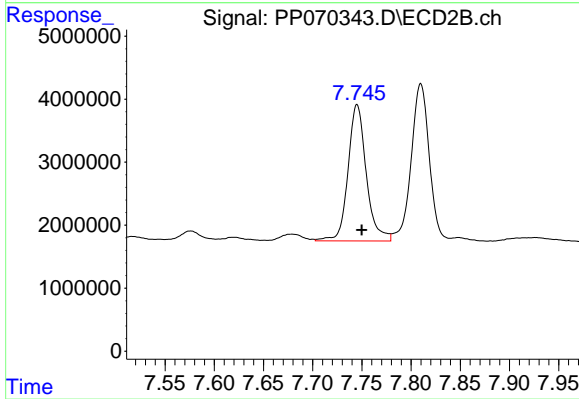
#30 AR-1254-5

R.T.: 6.921 min
 Delta R.T.: -0.006 min
 Response: 95407729
 Conc: 1412.00 ng/ml



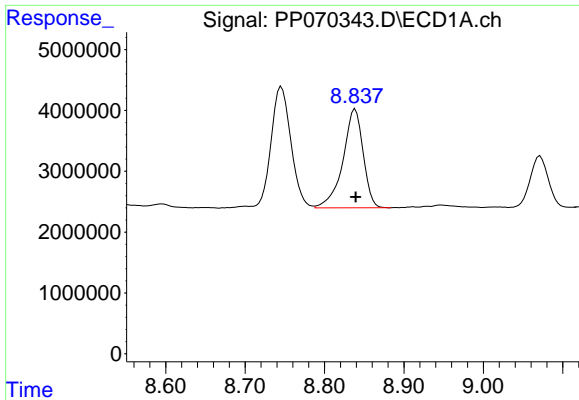
#41 AR-1268-1

R.T.: 8.746 min
 Delta R.T.: 0.000 min
 Response: 35059624
 Conc: 182.51 ng/ml



#41 AR-1268-1

R.T.: 7.745 min
 Delta R.T.: -0.005 min
 Response: 27984511
 Conc: 168.84 ng/ml



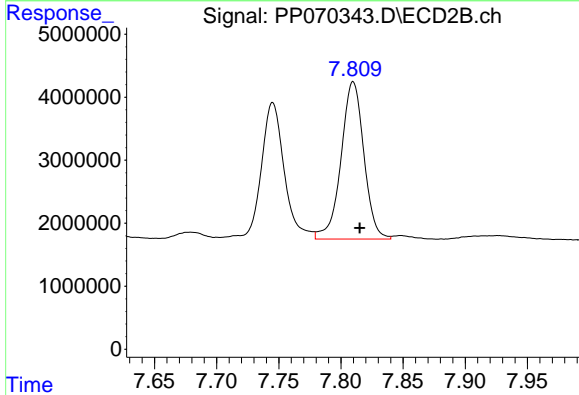
#42 AR-1268-2

R.T.: 8.839 min
 Delta R.T.: 0.000 min
 Response: 28769913
 Conc: 173.75 ng/ml

Instrument :
 ECD_P
 ClientSampleId :
 K084-10BDL2

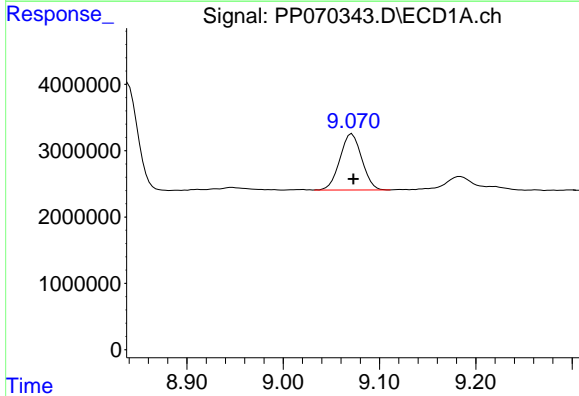
Manual Integrations
 APPROVED

Reviewed By :Yogesh Patel 03/10/2025
 Supervised By :Ankita Jodhani 03/10/2025



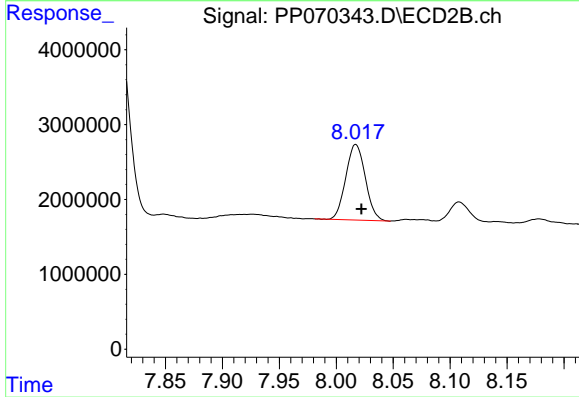
#42 AR-1268-2

R.T.: 7.810 min
 Delta R.T.: -0.005 min
 Response: 32003619
 Conc: 220.65 ng/ml



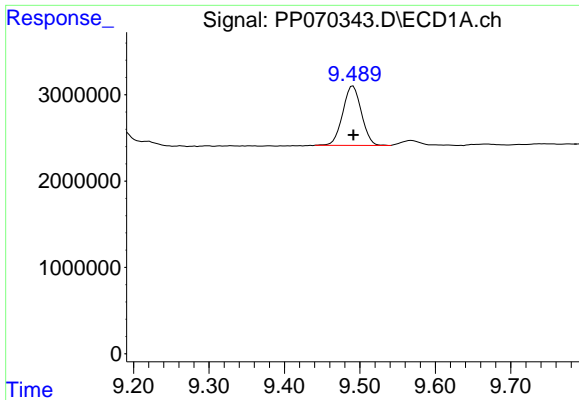
#43 AR-1268-3

R.T.: 9.071 min
 Delta R.T.: -0.001 min
 Response: 13322417
 Conc: 92.84 ng/ml



#43 AR-1268-3

R.T.: 8.017 min
 Delta R.T.: -0.005 min
 Response: 12088790
 Conc: 98.71 ng/ml



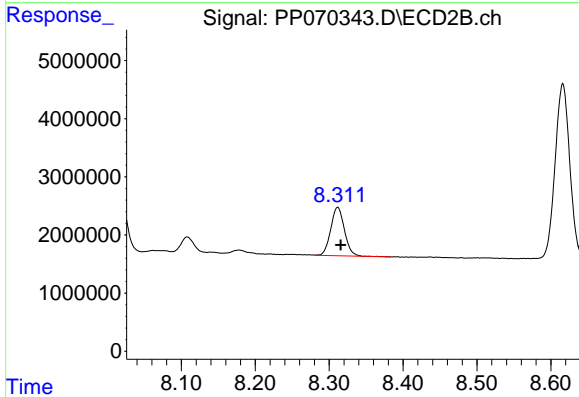
#44 AR-1268-4

R.T.: 9.491 min
 Delta R.T.: 0.000 min
 Response: 11832635
 Conc: 187.67 ng/ml

Instrument :
 ECD_P
 ClientSampleId :
 K084-10BDL2

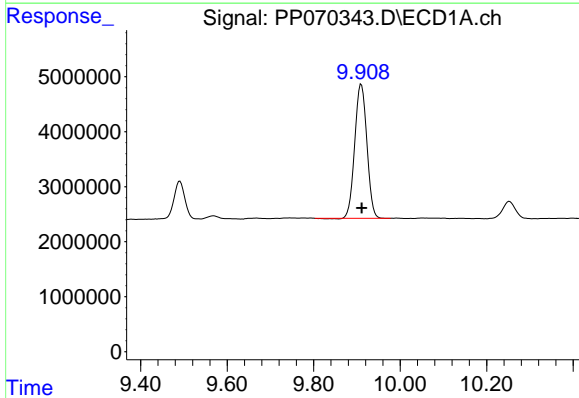
Manual Integrations
 APPROVED

Reviewed By :Yogesh Patel 03/10/2025
 Supervised By :Ankita Jodhani 03/10/2025



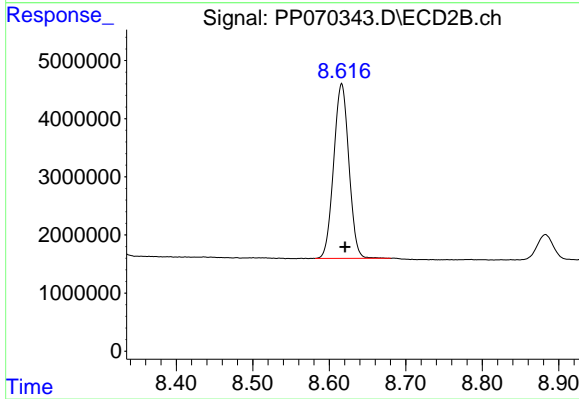
#44 AR-1268-4

R.T.: 8.312 min
 Delta R.T.: -0.004 min
 Response: 10794936
 Conc: 202.97 ng/ml



#45 AR-1268-5

R.T.: 9.910 min
 Delta R.T.: -0.001 min
 Response: 47440603
 Conc: 114.06 ng/ml



#45 AR-1268-5

R.T.: 8.616 min
 Delta R.T.: -0.005 min
 Response: 41350319
 Conc: 116.41 ng/ml