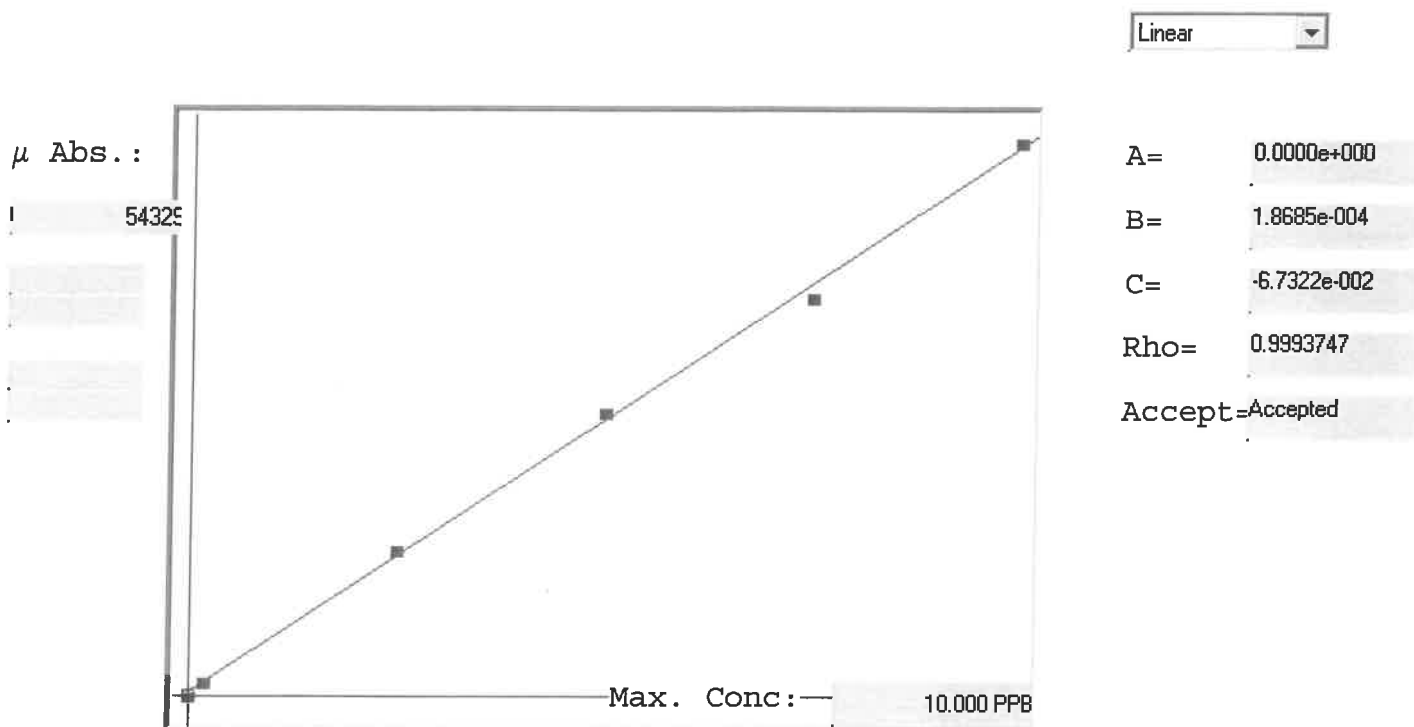


LB134824

7471B

INSTRUMENT ID: CV1



Std ID	Conc.	Calc.	Dev.	Mean	SD or %RSD	Rep 1	Rep 2	Rep 3	Rep 4	Rep 5	% RSD
0.0	0.000	-0.064	-0.064	17	0.000	17					-5
0.2	0.200	0.190	-0.010	1379	0.0 %	1379					4
2.5	2.500	2.607	0.107	14312	0.0 %	14312					3
5.0	5.000	5.132	0.132	27825	0.0 %	27825					-3
7.5	7.500	7.251	-0.249	39166	0.0 %	39166					1
10.0	10.000	10.084	0.084	54329	0.0 %	54329					

LB1348924 INSTRUMENT ID : CV1

Method: 7471B

Operator: Admin

Date of Analysis: 27 Feb 2025 09:30:21

Sample ID	Extended ID	μ Abs.	Conc.	Std Conc	Method	Units	Date	Type	Type
0.0 - 1	50	17	-	0.0000	7471B	PPB	27 Feb 2025 09:30:32	S	Std
0.2 - 1	50.2	1379	-	0.2000	7471B	PPB	27 Feb 2025 09:32:49	S	Std
2.5 - 1	52.5	14312	-	2.5000	7471B	PPB	27 Feb 2025 09:37:32	S	Std
5.0 - 1	55	27825	-	5.0000	7471B	PPB	27 Feb 2025 09:39:49	S	Std
7.5 - 1	57.5	39166	-	7.5000	7471B	PPB	27 Feb 2025 09:42:08	S	Std
10.0 - 1	510	54329	-	10.0000	7471B	PPB	27 Feb 2025 09:44:27	S	Std
ICV20 - 1	ICV20	21070	3.8696	-	7471B	PPB	27 Feb 2025 09:49:59	U	SMPL
ICB20 - 1	ICB20	-40	-0.0748	-	7471B	PPB	27 Feb 2025 09:54:54	U	SMPL
CCV29 - 1	CCV29	27996	5.1638	-	7471B	PPB	27 Feb 2025 09:57:08	U	SMPL
CCB29 - 1	CCB29	29	-0.0619	-	7471B	PPB	27 Feb 2025 10:02:06	U	SMPL
CRA - 1	CRA	1336	0.1823	-	7471B	PPB	27 Feb 2025 10:04:21	U	SMPL
HighStd - 1	HighStd	55611	10.3237	-	7471B	PPB	27 Feb 2025 10:06:36	U	SMPL
ChkStd - 1	ChkStd	35958	6.6515	-	7471B	PPB	27 Feb 2025 10:08:51	U	SMPL
PB166888BL - 1	PBS	-44	-0.0755	-	7471B	PPB	27 Feb 2025 10:13:51	U	SMPL
PB166888BS - 1	LCSS	20478	3.7590	-	7471B	PPB	27 Feb 2025 10:16:06	U	SMPL
Q1427-01 - 1	VNJ-227	894	0.0997	-	7471B	PPB	27 Feb 2025 10:18:23	U	SMPL
Q1428-01 - 1	NB-07-022525	1602	0.2320	-	7471B	PPB	27 Feb 2025 10:20:42	U	SMPL
Q1440-01 - 1	OR-02-022625	3249	0.5398	-	7471B	PPB	27 Feb 2025 10:22:59	U	SMPL
Q1441-01 - 1	HD-02-022625	2167	0.3376	-	7471B	PPB	27 Feb 2025 10:25:17	U	SMPL
Q1442-03 - 1	351	5889	1.0330	-	7471B	PPB	27 Feb 2025 10:27:33	U	SMPL
CCV30 - 1	CCV30	27743	5.1165	-	7471B	PPB	27 Feb 2025 10:29:50	U	SMPL
CCB30 - 1	CCB30	6	-0.0662	-	7471B	PPB	27 Feb 2025 10:34:44	U	SMPL
Q1447-01 - 1	WC1	573	0.0397	-	7471B	PPB	27 Feb 2025 10:37:06	U	SMPL
Q1447-01DUP - 1	WC1DUP	843	0.0902	-	7471B	PPB	27 Feb 2025 10:39:21	U	SMPL
Q1447-01MS - 1	WC1MS	20151	3.6979	-	7471B	PPB	27 Feb 2025 10:41:36	U	SMPL
Q1447-01MSD - 1	WC1MSD	20323	3.7301	-	7471B	PPB	27 Feb 2025 10:43:52	U	SMPL
Q1447-01LX5 - 1		-139	-0.0933	-	7471B	PPB	27 Feb 2025 10:46:10	U	SMPL
Q1447-01A - 1		20792	3.8177	-	7471B	PPB	27 Feb 2025 10:48:29	U	SMPL
CCV31 - 1	CCV31	27842	5.1350	-	7471B	PPB	27 Feb 2025 10:50:46	U	SMPL
CCB31 - 1	CCB31	-28	-0.0726	-	7471B	PPB	27 Feb 2025 10:55:44	U	SMPL