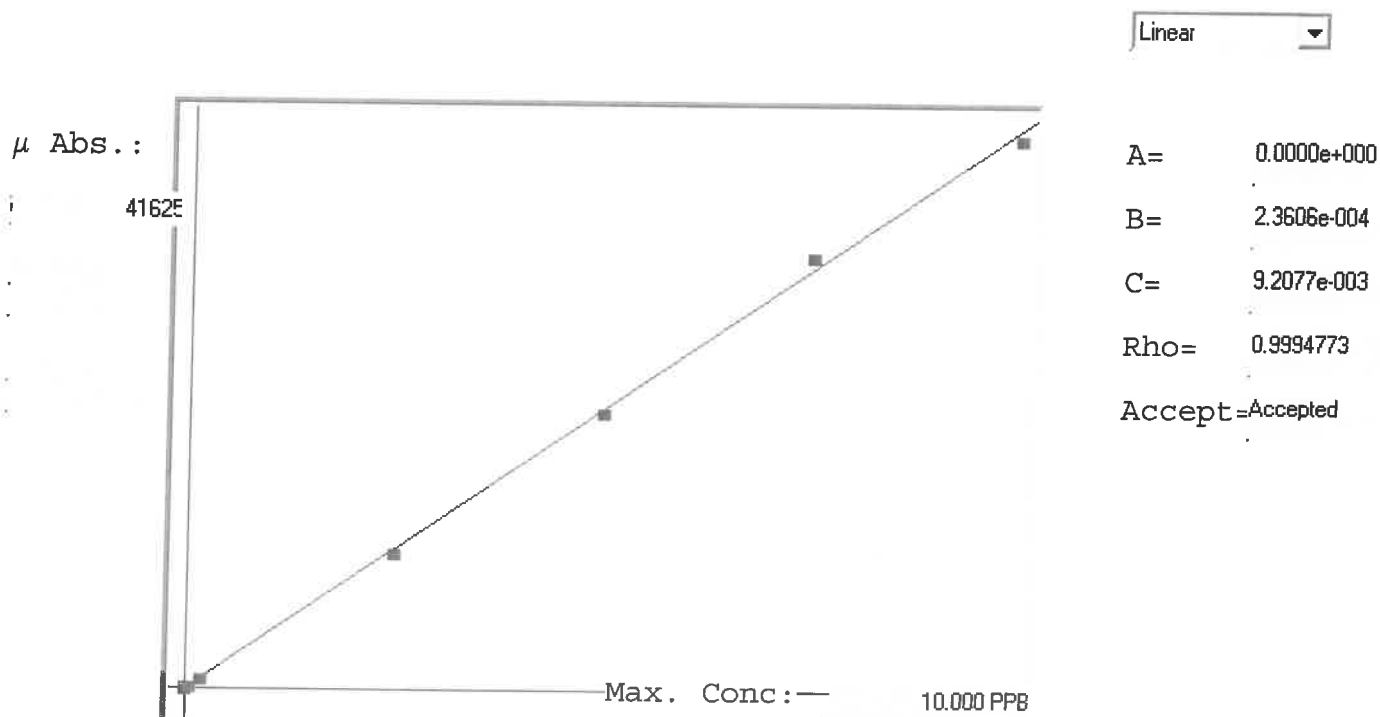


LB134890

245.1 INSTRUMENT ID: CV1



Std ID	Conc.	Calc.	Dev.	Mean	SD or %RSD	Rep 1	Rep 2	Rep 3	Rep 4	Rep 5	%D
0.0	0.000	0.009	0.009	0	0.000	0					-
0.05	0.050	0.051	0.001	175	0.0 %	175	0				2
0.2	0.200	0.203	0.003	821	0.0 %	821					+2
2.5	2.500	2.446	-0.054	10321	0.0 %	10321					-2
5.0	5.000	4.946	-0.054	20915	0.0 %	20915					-1
7.5	7.500	7.760	0.260	32835	0.0 %	32835					3
10.0	10.000	9.835	-0.165	41625	0.0 %	41625					-2

# LB134890 INSTRUMENT ID : CV1

Method: 245.1

Operator: Admin

Date of Analysis: 04 Mar 2025 12:43:09

Sample ID	Extended ID	μ Abs.	Conc.	Std Conc	Method	Units	Date	Type	Type
0.0 - 1	50	0	-	0.0000	245.1	PPB	04 Mar 2025 15:10:21	S	Std
0.05 - 1	50.05	175	-	0.0500	245.1	PPB	04 Mar 2025 15:12:40	S	Std
0.2 - 1	50.2	821	-	0.2000	245.1	PPB	04 Mar 2025 15:14:57	S	Std
2.5 - 1	52.5	10321	-	2.5000	245.1	PPB	04 Mar 2025 15:17:14	S	Std
5.0 - 1	55	20915	-	5.0000	245.1	PPB	04 Mar 2025 15:19:30	S	Std
7.5 - 1	57.5	32835	-	7.5000	245.1	PPB	04 Mar 2025 15:21:47	S	Std
10.0 - 1	51.8	41625	-	10.0000	245.1	PPB	04 Mar 2025 15:30:39	S	Std
ICV30 - 1	ICV30	17029	4.0290	-245.1		PPB	04 Mar 2025 15:39:43	U	SMPL
ICB30 - 1	ICB30	-189	-0.0354	-245.1		PPB	04 Mar 2025 15:41:58	U	SMPL
CCV60 - 1	CCV60	21392	5.0590	-245.1		PPB	04 Mar 2025 15:44:14	U	SMPL
CCB60 - 1	CCB60	-274	-0.0555	-245.1		PPB	04 Mar 2025 15:46:30	U	SMPL
CRA - 1	CRA	186	0.0531	-245.1		PPB	04 Mar 2025 15:52:24	U	SMPL
HighStd - 1	HighStd	41633	9.8370	-245.1		PPB	04 Mar 2025 15:54:39	U	SMPL
ChkStd - 1	ChkStd	29942	7.0773	-245.1		PPB	04 Mar 2025 15:56:54	U	SMPL
PB166974BL - 1	PBW	-366	-0.0772	-245.1		PPB	04 Mar 2025 15:59:14	U	SMPL
PB166974BS - 1	LCSW	16284	3.8532	-245.1		PPB	04 Mar 2025 16:04:35	U	SMPL
Q1456-02 - 1	EFF-WASTE WATER	-224	-0.0437	-245.1		PPB	04 Mar 2025 16:06:51	U	SMPL
Q1456-02DUP - 1	EFF-WASTE WATERDUP	12	0.0120	-245.1		PPB	04 Mar 2025 16:09:09	U	SMPL
Q1456-02MS - 1	EFF-WASTE WATERMS	16058	3.7998	-245.1		PPB	04 Mar 2025 16:11:26	U	SMPL
Q1456-02MSD - 1	EFF-WASTE WATERMSD	15957	3.7760	-245.1		PPB	04 Mar 2025 16:13:43	U	SMPL
CCV61 - 1	CCV61	21666	5.1236	-245.1		PPB	04 Mar 2025 16:15:59	U	SMPL
CCB61 - 1	CCB61	-215	-0.0415	-245.1		PPB	04 Mar 2025 16:18:17	U	SMPL
Q1456-02LX5 - 1		-89	-0.0118	-245.1		PPB	04 Mar 2025 16:20:34	U	SMPL
Q1456-02A - 1		16064	3.8013	-245.1		PPB	04 Mar 2025 16:25:32	U	SMPL
CCV62 - 1	CCV62	22181	5.2452	-245.1		PPB	04 Mar 2025 16:27:46	U	SMPL
CCB62 - 1	CCB62	-352	-0.0739	-245.1		PPB	04 Mar 2025 16:30:03	U	SMPL