

Data Path : Z:\svoasrv\HPCHEM1\BNA\_N\Data\BN030525\  
 Data File : BN036529.D  
 Acq On : 05 Mar 2025 18:07  
 Operator : RC/JU  
 Sample : Q1477-04  
 Misc :  
 ALS Vial : 7 Sample Multiplier: 1

Instrument :  
 BNA\_N  
 ClientSampleId :  
 RW7-SP303-20250228

Quant Time: Mar 06 00:02:27 2025  
 Quant Method : Z:\svoasrv\HPCHEM1\BNA\_N\Methods\8270-SIM-BN021025.M  
 Quant Title : ASP BNA STANDARDS FOR 5 POINT CALIBRATION  
 QLast Update : Wed Mar 05 16:08:57 2025  
 Response via : Initial Calibration

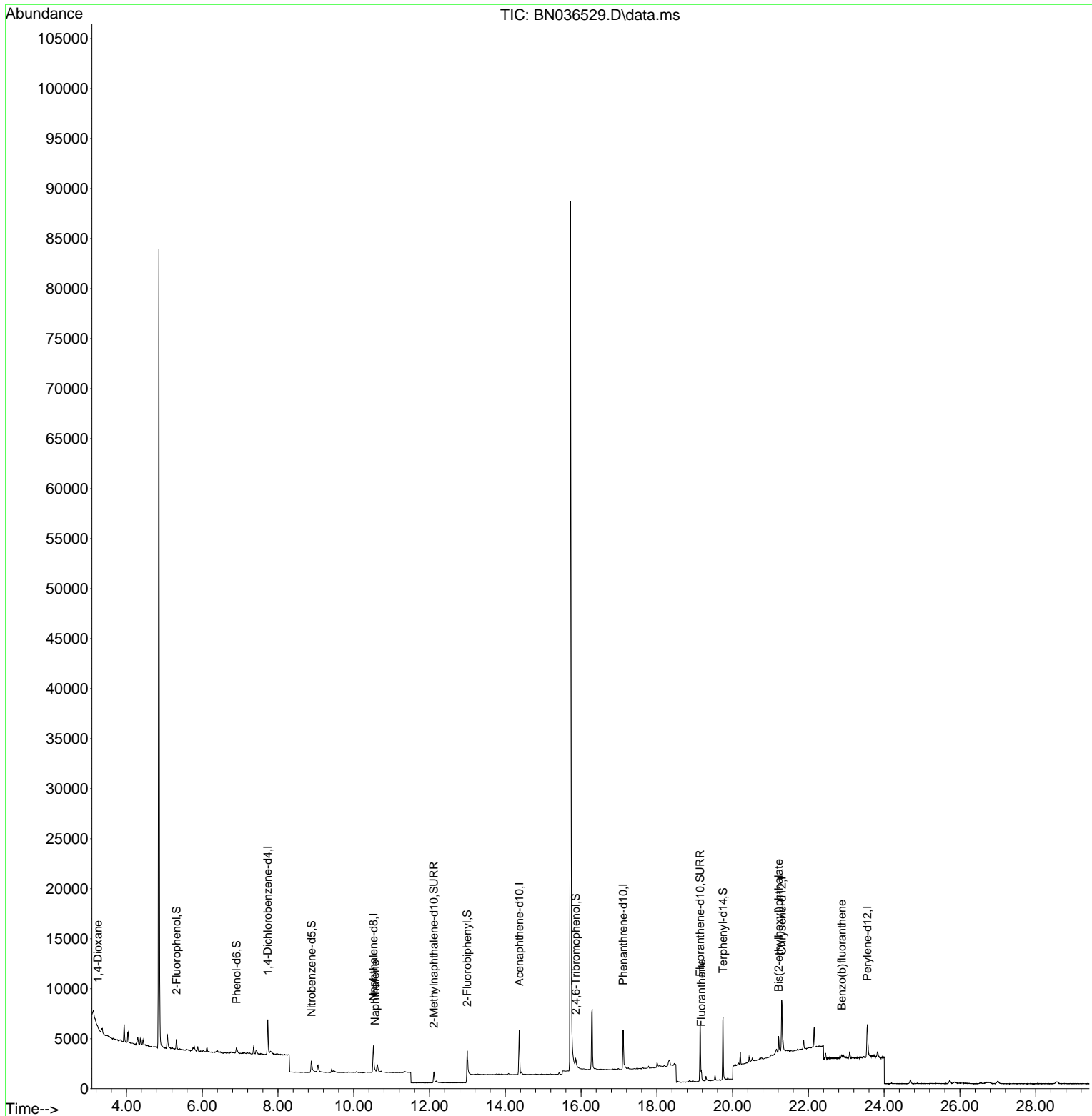
Compound	R.T.	QIon	Response	Conc	Units	Dev(Min)
-----						
Internal Standards						
1) 1,4-Dichlorobenzene-d4	7.732	152	1825	0.400	ng	0.00
7) Naphthalene-d8	10.519	136	4151	0.400	ng	0.01
13) Acenaphthene-d10	14.366	164	2616	0.400	ng	0.00
19) Phenanthrene-d10	17.111	188	5706	0.400	ng	0.00
29) Chrysene-d12	21.295	240	5791	0.400	ng	# 0.00
35) Perylene-d12	23.557	264	5265	0.400	ng	# 0.00
System Monitoring Compounds						
4) 2-Fluorophenol	5.319	112	708	0.164	ng	0.00
5) Phenol-d6	6.908	99	525	0.104	ng	0.00
8) Nitrobenzene-d5	8.886	82	1275	0.311	ng	0.01
11) 2-Methylnaphthalene-d10	12.116	152	1941	0.304	ng	0.01
14) 2,4,6-Tribromophenol	15.858	330	471	0.363	ng	0.00
15) 2-Fluorobiphenyl	12.993	172	4787	0.487	ng	0.00
27) Fluoranthene-d10	19.141	212	7266	0.458	ng	0.00
31) Terphenyl-d14	19.745	244	6098	0.493	ng	0.00
Target Compounds						
2) 1,4-Dioxane	3.247	88	107	0.054	ng	# 54
9) Naphthalene	10.562	128	245	0.020	ng	# 35
28) Fluoranthene	19.173	202	479	0.024	ng	# 74
34) Bis(2-ethylhexyl)phtha...	21.214	149	1753	0.148	ng	# 92
37) Benzo(b)fluoranthene	22.879	252	432	0.025	ng	# 1

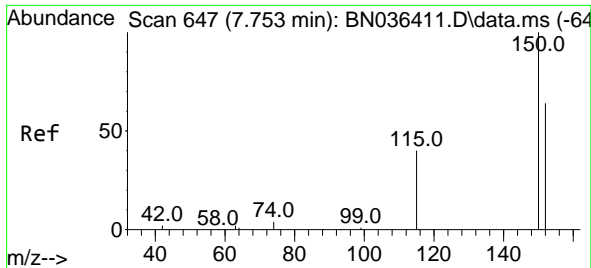
(#) = qualifier out of range (m) = manual integration (+) = signals summed

Data Path : Z:\svoasrv\HPCHEM1\BNA\_N\Data\BN030525\  
 Data File : BN036529.D  
 Acq On : 05 Mar 2025 18:07  
 Operator : RC/JU  
 Sample : Q1477-04  
 Misc :  
 ALS Vial : 7 Sample Multiplier: 1

Instrument :  
 BNA\_N  
 ClientSampleId :  
 RW7-SP303-20250228

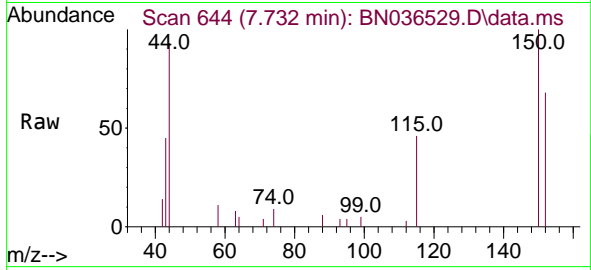
Quant Time: Mar 06 00:02:27 2025  
 Quant Method : Z:\svoasrv\HPCHEM1\BNA\_N\Methods\8270-SIM-BN021025.M  
 Quant Title : ASP BNA STANDARDS FOR 5 POINT CALIBRATION  
 QLast Update : Wed Mar 05 16:08:57 2025  
 Response via : Initial Calibration



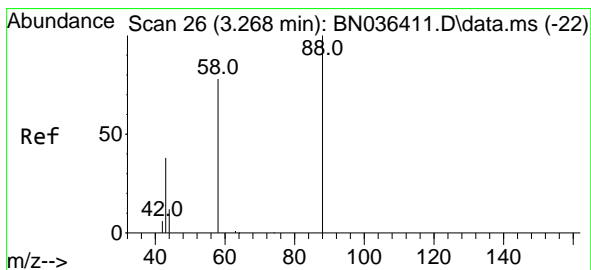
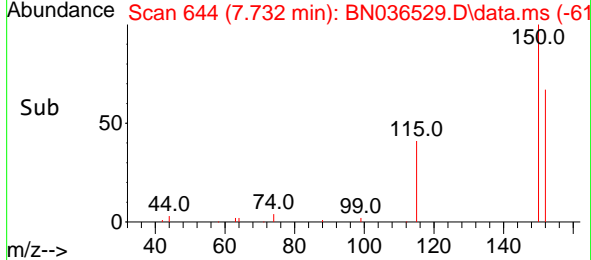
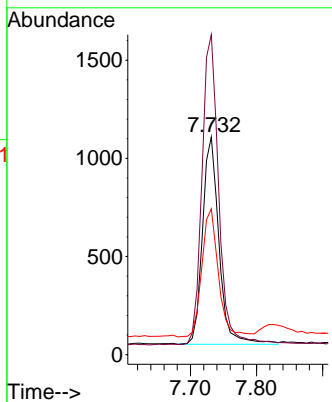


#1  
 1,4-Dichlorobenzene-d4  
 Concen: 0.400 ng  
 RT: 7.732 min Scan# 64  
 Delta R.T. -0.000 min  
 Lab File: BN036529.D  
 Acq: 05 Mar 2025 18:07

Instrument :  
 BNA\_N  
 ClientSampleId :  
 RW7-SP303-20250228

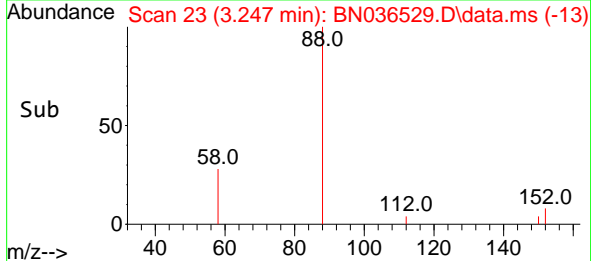
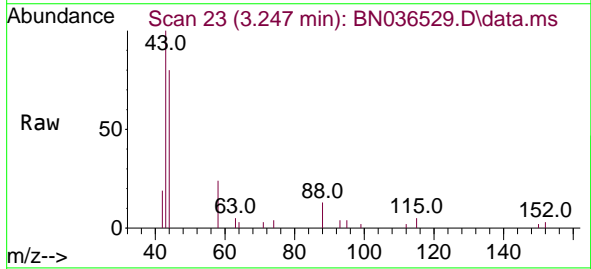
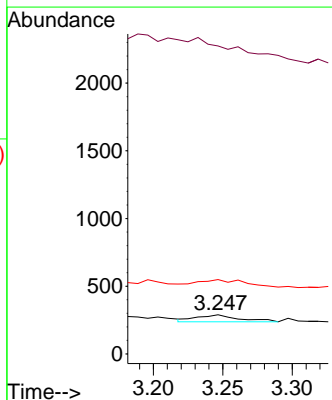


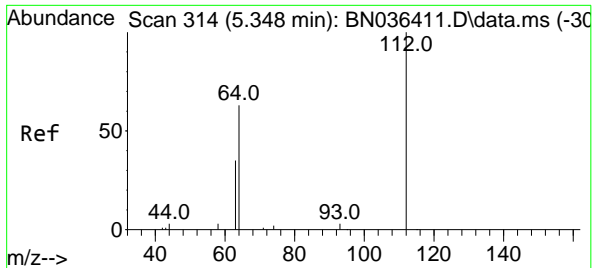
Tgt Ion:152 Resp: 1825  
 Ion Ratio Lower Upper  
 152 100  
 150 147.0 123.7 185.5  
 115 67.0 52.5 78.7



#2  
 1,4-Dioxane  
 Concen: 0.054 ng  
 RT: 3.247 min Scan# 23  
 Delta R.T. -0.000 min  
 Lab File: BN036529.D  
 Acq: 05 Mar 2025 18:07

Tgt Ion: 88 Resp: 107  
 Ion Ratio Lower Upper  
 88 100  
 43 0.0 33.7 50.5#  
 58 119.6 68.9 103.3#

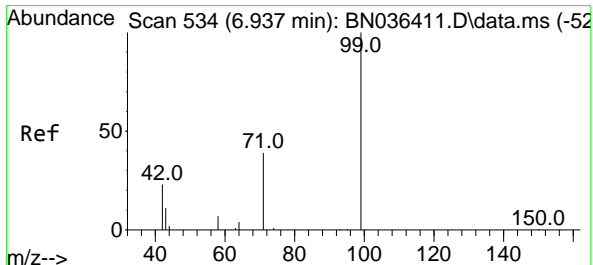
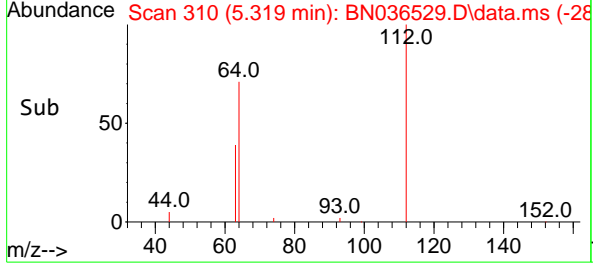
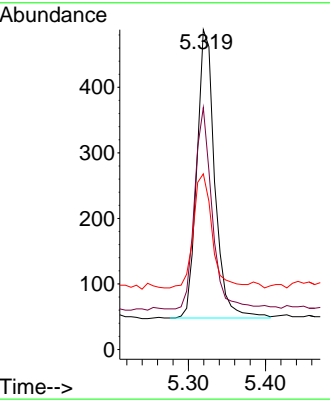
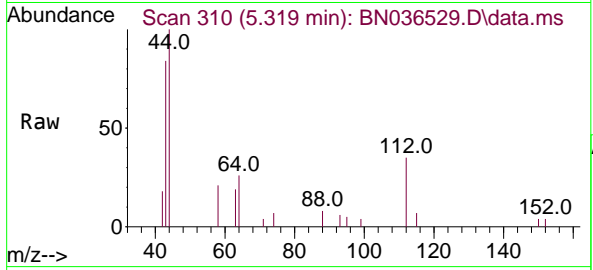




#4  
 2-Fluorophenol  
 Concen: 0.164 ng  
 RT: 5.319 min Scan# 310  
 Delta R.T. -0.000 min  
 Lab File: BN036529.D  
 Acq: 05 Mar 2025 18:07

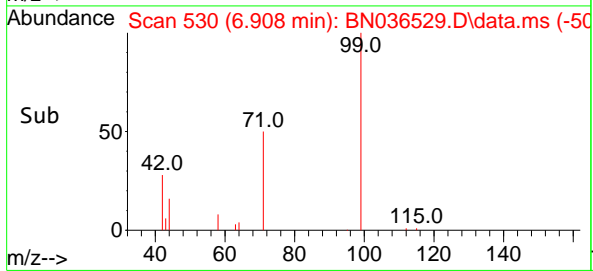
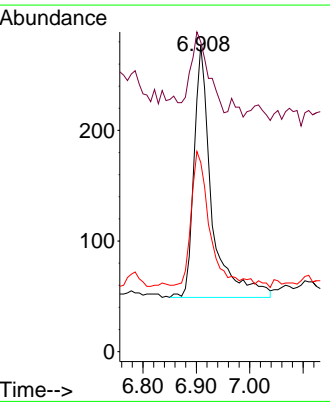
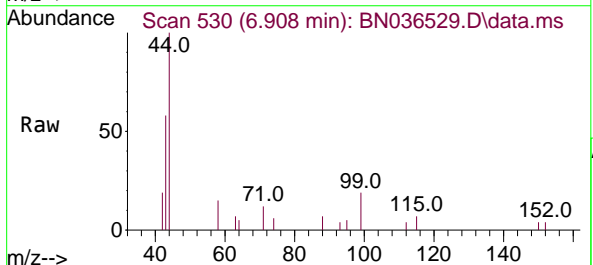
Instrument : BNA\_N  
 ClientSampleId : RW7-SP303-20250228

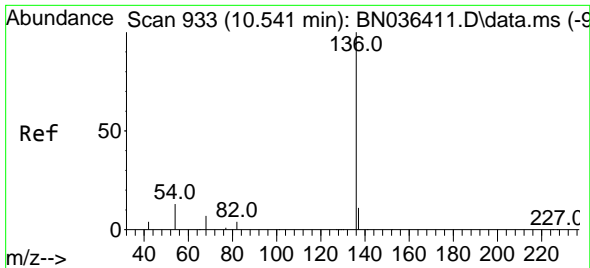
Tgt Ion	Resp	Lower	Upper
112	100		
64	68.5	53.4	80.0
63	42.4	30.3	45.5



#5  
 Phenol-d6  
 Concen: 0.104 ng  
 RT: 6.908 min Scan# 530  
 Delta R.T. 0.007 min  
 Lab File: BN036529.D  
 Acq: 05 Mar 2025 18:07

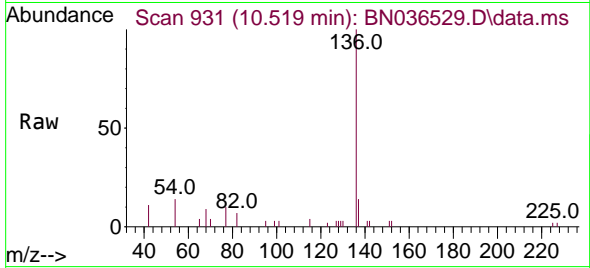
Tgt Ion	Resp	Lower	Upper
99	100		
42	31.2	21.7	32.5
71	53.0	32.6	49.0



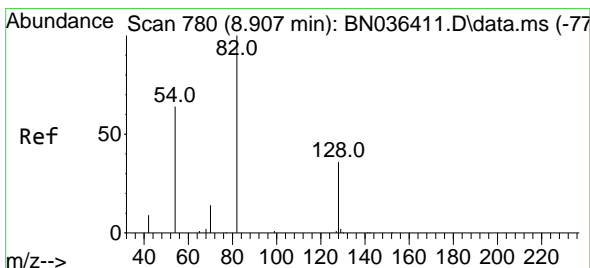
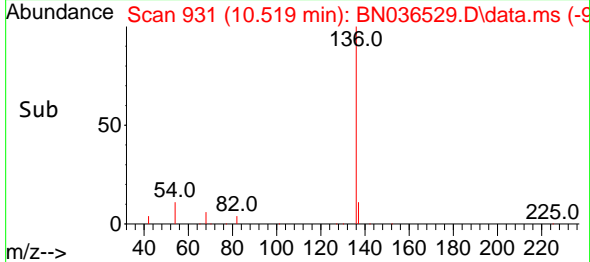
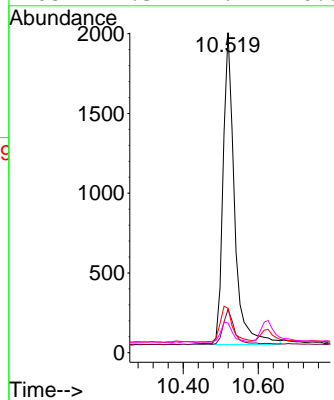


#7  
 Naphthalene-d8  
 Concen: 0.400 ng  
 RT: 10.519 min Scan# 911  
 Delta R.T. 0.011 min  
 Lab File: BN036529.D  
 Acq: 05 Mar 2025 18:07

Instrument :  
 BNA\_N  
 ClientSampleId :  
 RW7-SP303-20250228

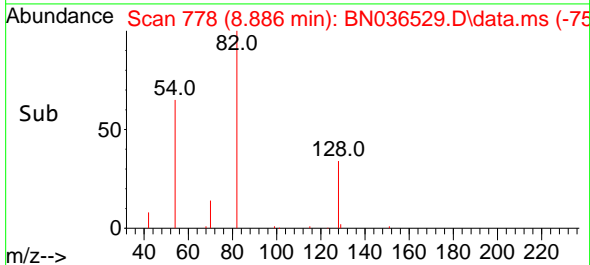
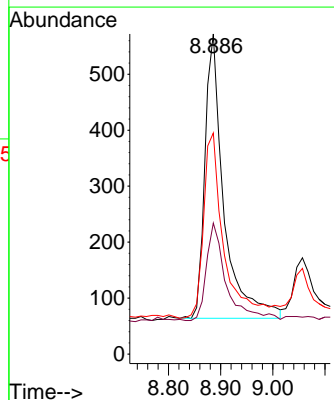
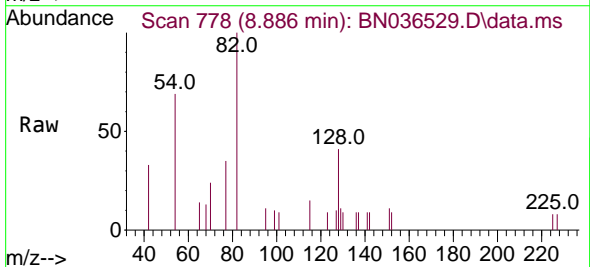


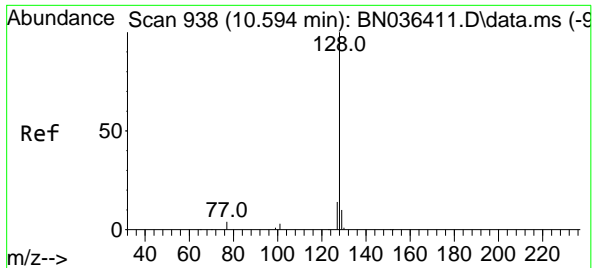
Tgt Ion: 136 Resp: 4151  
 Ion Ratio Lower Upper  
 136 100  
 137 13.6 10.1 15.1  
 54 13.9 11.8 17.6  
 68 9.3 7.2 10.8



#8  
 Nitrobenzene-d5  
 Concen: 0.311 ng  
 RT: 8.886 min Scan# 778  
 Delta R.T. 0.011 min  
 Lab File: BN036529.D  
 Acq: 05 Mar 2025 18:07

Tgt Ion: 82 Resp: 1275  
 Ion Ratio Lower Upper  
 82 100  
 128 40.9 31.9 47.9  
 54 69.1 53.1 79.7



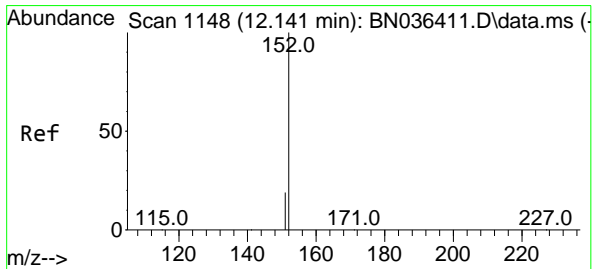
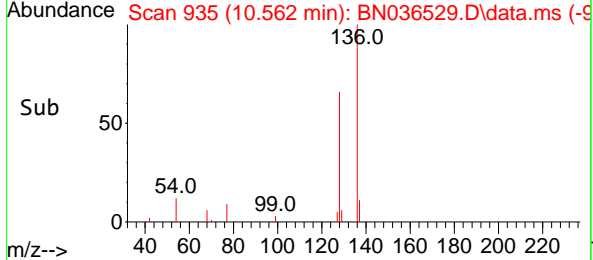
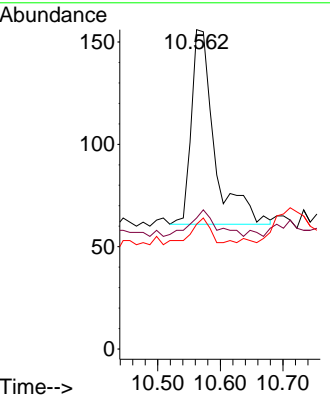
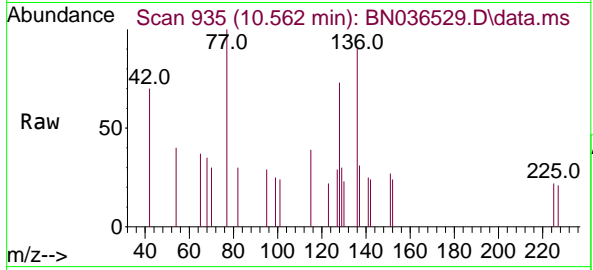


#9  
 Naphthalene  
 Concen: 0.020 ng  
 RT: 10.562 min Scan# 91  
 Delta R.T. -0.000 min  
 Lab File: BN036529.D  
 Acq: 05 Mar 2025 18:07

Instrument : BNA\_N  
 ClientSampleId : RW7-SP303-20250228

Tgt Ion:128 Resp: 245

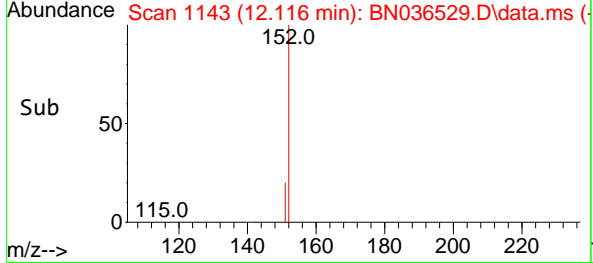
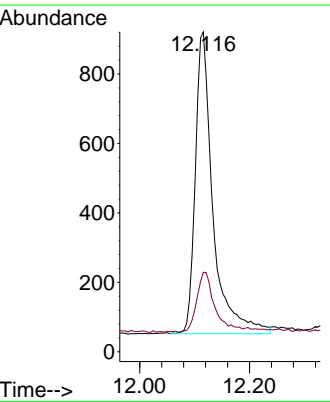
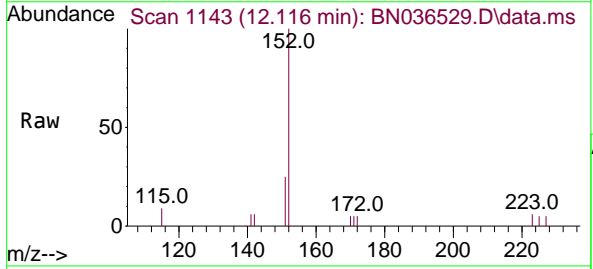
Ion	Ratio	Lower	Upper
128	100		
129	41.0	9.6	14.4#
127	39.1	12.0	18.0#

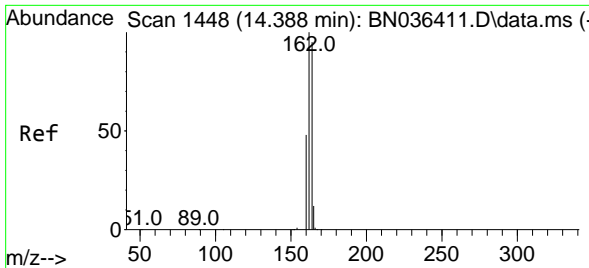


#11  
 2-Methylnaphthalene-d10  
 Concen: 0.304 ng  
 RT: 12.116 min Scan# 1143  
 Delta R.T. 0.010 min  
 Lab File: BN036529.D  
 Acq: 05 Mar 2025 18:07

Tgt Ion:152 Resp: 1941

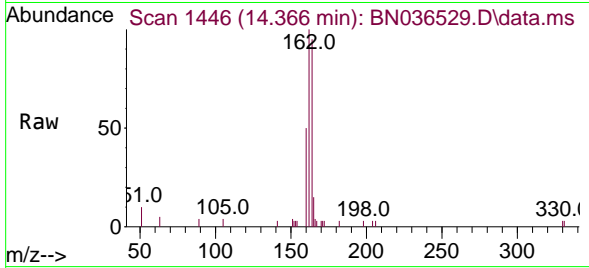
Ion	Ratio	Lower	Upper
152	100		
151	20.3	16.6	25.0



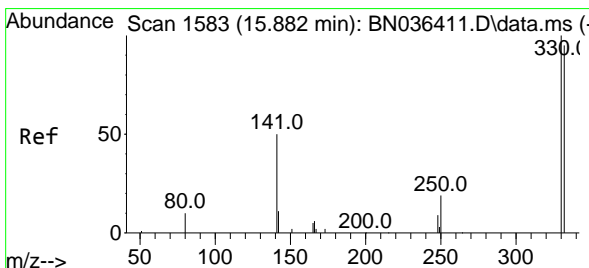
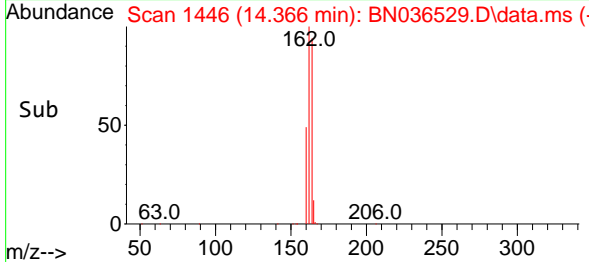
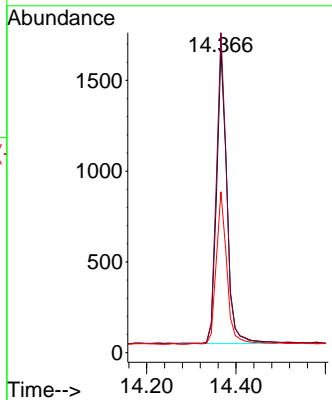


#13  
 Acenaphthene-d10  
 Concen: 0.400 ng  
 RT: 14.366 min Scan# 14  
 Delta R.T. -0.000 min  
 Lab File: BN036529.D  
 Acq: 05 Mar 2025 18:07

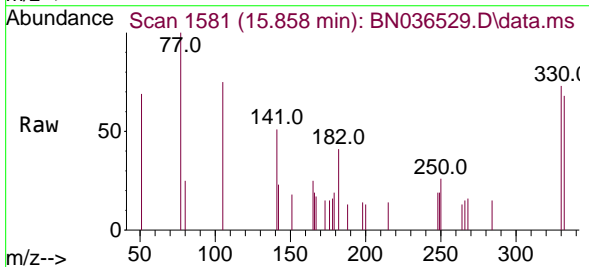
Instrument :  
 BNA\_N  
 ClientSampleId :  
 RW7-SP303-20250228



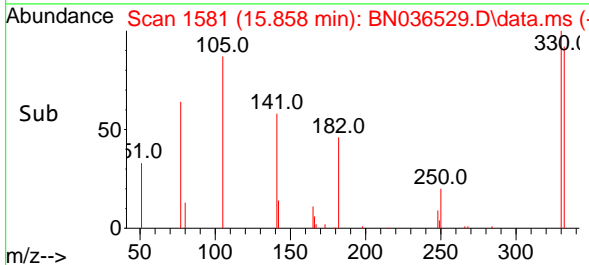
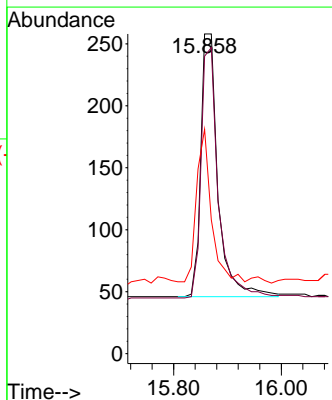
Tgt Ion:164 Resp: 2616  
 Ion Ratio Lower Upper  
 164 100  
 162 105.6 84.1 126.1  
 160 53.1 41.4 62.0

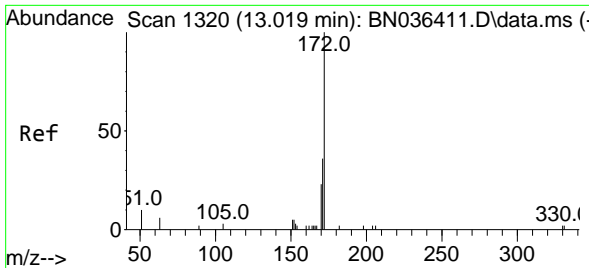


#14  
 2,4,6-Tribromophenol  
 Concen: 0.363 ng  
 RT: 15.858 min Scan# 1581  
 Delta R.T. -0.000 min  
 Lab File: BN036529.D  
 Acq: 05 Mar 2025 18:07



Tgt Ion:330 Resp: 471  
 Ion Ratio Lower Upper  
 330 100  
 332 95.5 76.6 114.8  
 141 50.1 37.8 56.8



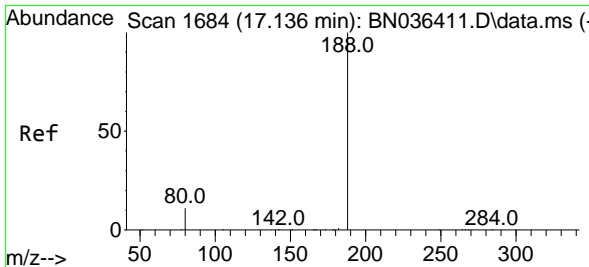
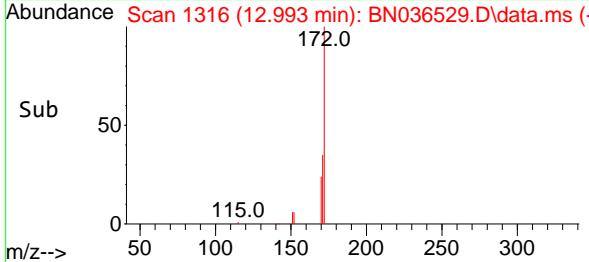
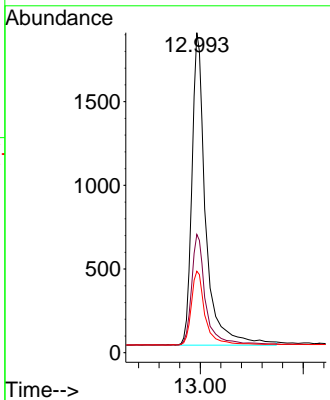
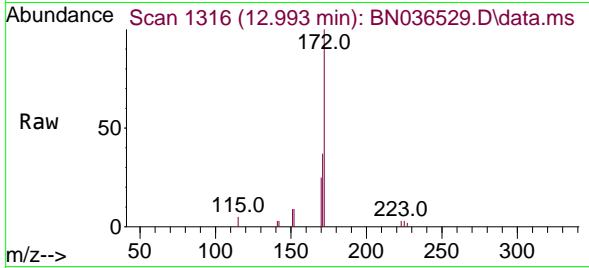


#15  
 2-Fluorobiphenyl  
 Concen: 0.487 ng  
 RT: 12.993 min Scan# 11  
 Delta R.T. 0.005 min  
 Lab File: BN036529.D  
 Acq: 05 Mar 2025 18:07

Instrument : BNA\_N  
 ClientSampleId : RW7-SP303-20250228

Tgt Ion:172 Resp: 4787

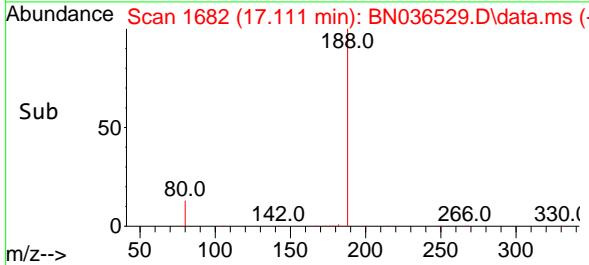
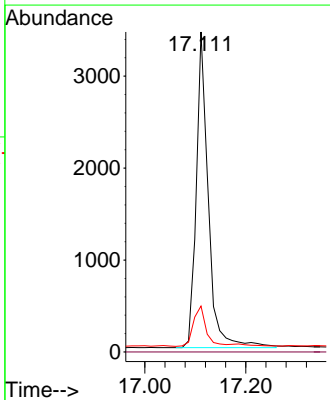
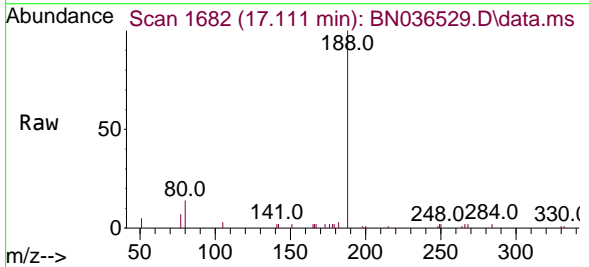
Ion	Ratio	Lower	Upper
172	100		
171	37.0	29.6	44.4
170	25.5	19.8	29.6



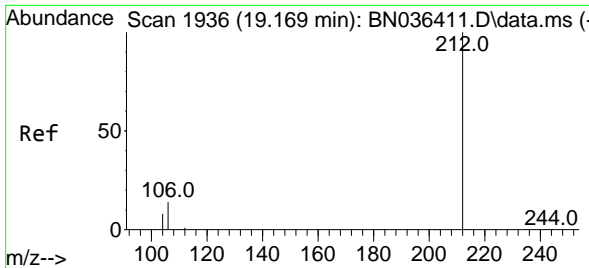
#19  
 Phenanthrene-d10  
 Concen: 0.400 ng  
 RT: 17.111 min Scan# 1682  
 Delta R.T. -0.000 min  
 Lab File: BN036529.D  
 Acq: 05 Mar 2025 18:07

Tgt Ion:188 Resp: 5706

Ion	Ratio	Lower	Upper
188	100		
94	0.0	0.0	0.0
80	14.4	9.8	14.6





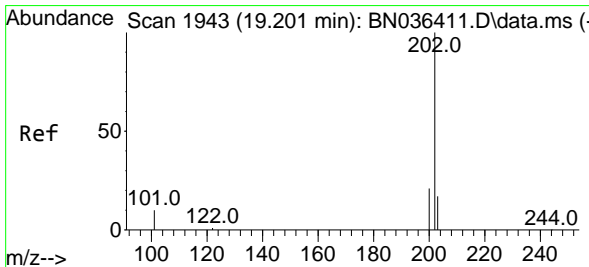
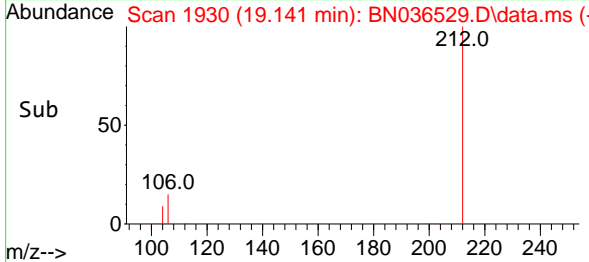
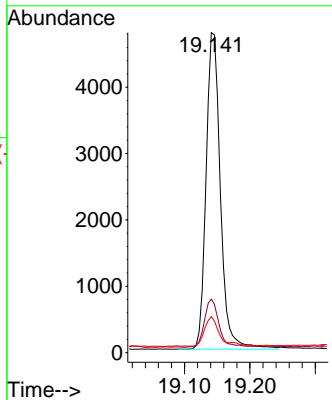
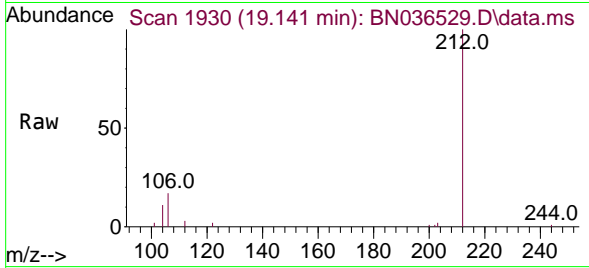


#27  
 Fluoranthene-d10  
 Concen: 0.458 ng  
 RT: 19.141 min Scan# 1937  
 Delta R.T. -0.000 min  
 Lab File: BN036529.D  
 Acq: 05 Mar 2025 18:07

Instrument : BNA\_N  
 ClientSampleId : RW7-SP303-20250228

Tgt Ion:212 Resp: 7266

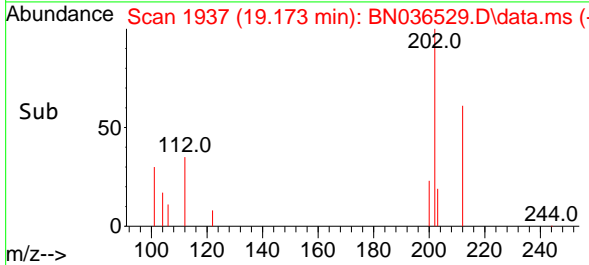
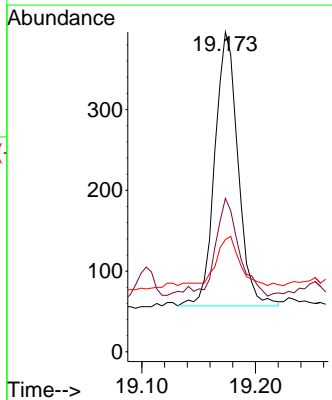
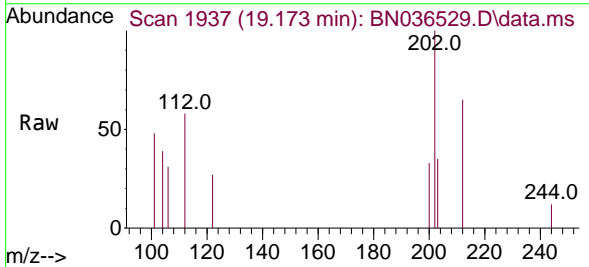
Ion	Ratio	Lower	Upper
212	100		
106	15.3	11.5	17.3
104	9.7	7.1	10.7

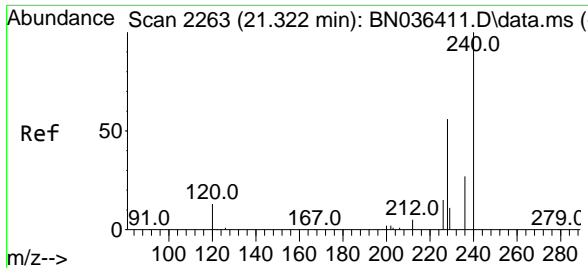


#28  
 Fluoranthene  
 Concen: 0.024 ng  
 RT: 19.173 min Scan# 1937  
 Delta R.T. -0.000 min  
 Lab File: BN036529.D  
 Acq: 05 Mar 2025 18:07

Tgt Ion:202 Resp: 479

Ion	Ratio	Lower	Upper
202	100		
101	34.4	9.2	13.8#
203	18.2	13.4	20.0



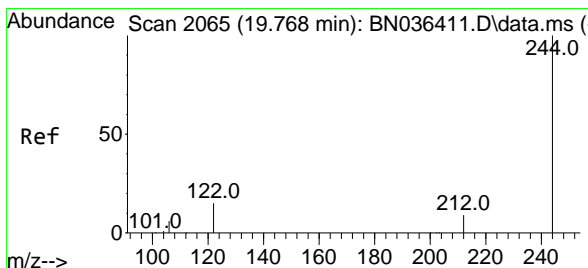
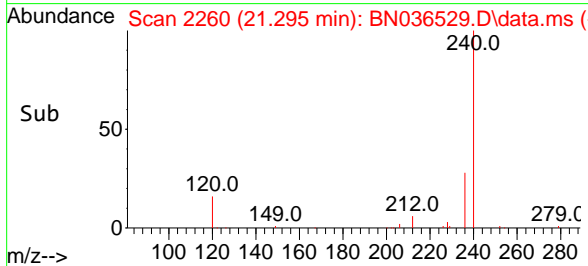
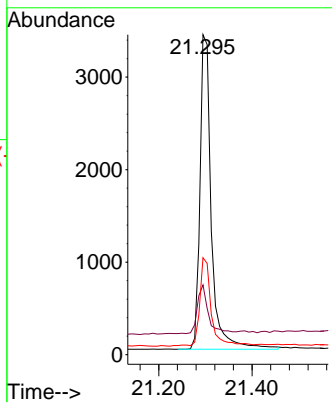
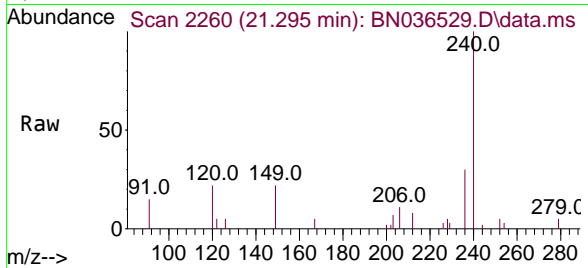


#29  
 Chrysene-d12  
 Concen: 0.400 ng  
 RT: 21.295 min Scan# 21  
 Delta R.T. -0.000 min  
 Lab File: BN036529.D  
 Acq: 05 Mar 2025 18:07

Instrument :  
 BNA\_N  
 ClientSampleId :  
 RW7-SP303-20250228

Tgt Ion:240 Resp: 5791

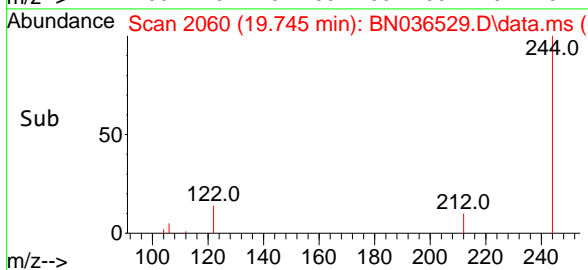
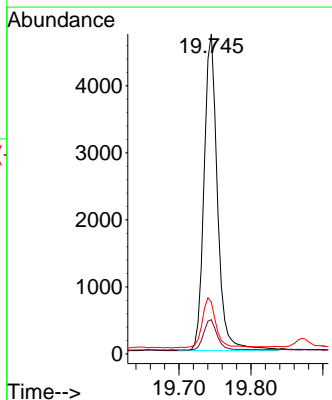
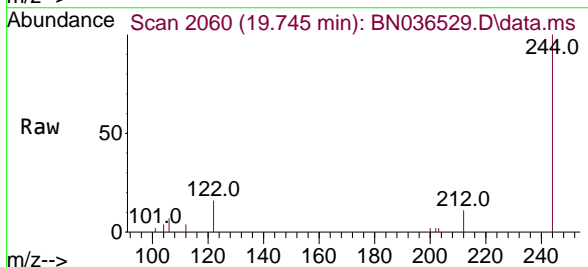
Ion	Ratio	Lower	Upper
240	100		
120	21.8	13.3	19.9#
236	30.3	23.0	34.6

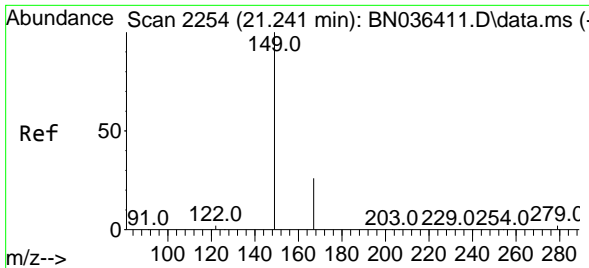


#31  
 Terphenyl-d14  
 Concen: 0.493 ng  
 RT: 19.745 min Scan# 2060  
 Delta R.T. -0.000 min  
 Lab File: BN036529.D  
 Acq: 05 Mar 2025 18:07

Tgt Ion:244 Resp: 6098

Ion	Ratio	Lower	Upper
244	100		
212	10.7	8.1	12.1
122	16.2	12.8	19.2

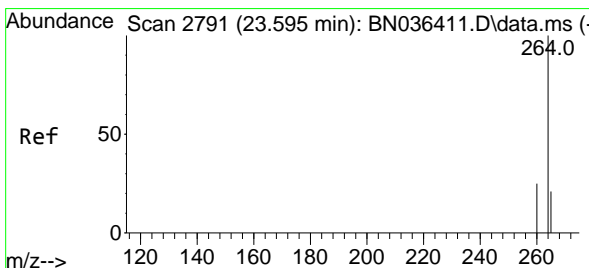
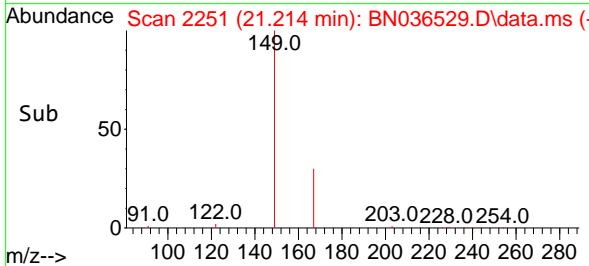
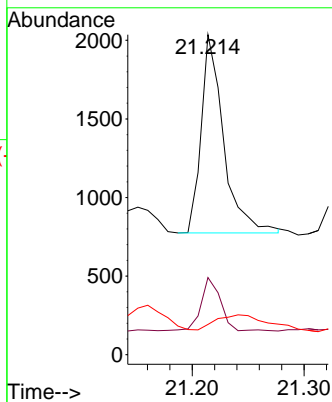
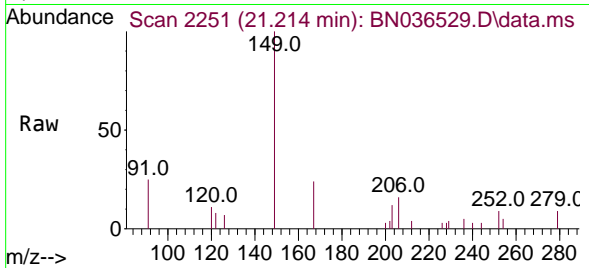




#34  
 Bis(2-ethylhexyl)phthalate  
 Concen: 0.148 ng  
 RT: 21.214 min Scan# 21  
 Delta R.T. -0.000 min  
 Lab File: BN036529.D  
 Acq: 05 Mar 2025 18:07

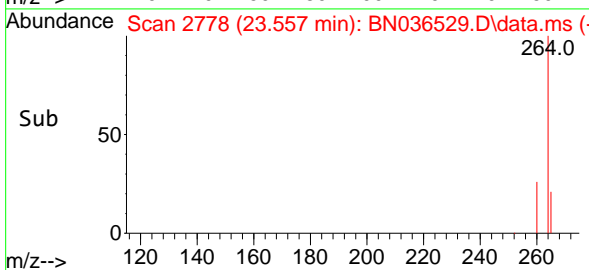
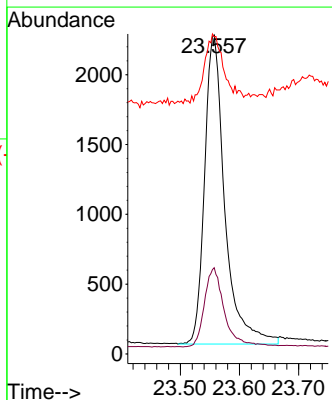
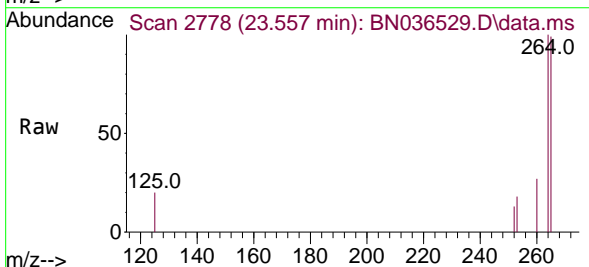
Instrument :  
 BNA\_N  
 ClientSampleId :  
 RW7-SP303-20250228

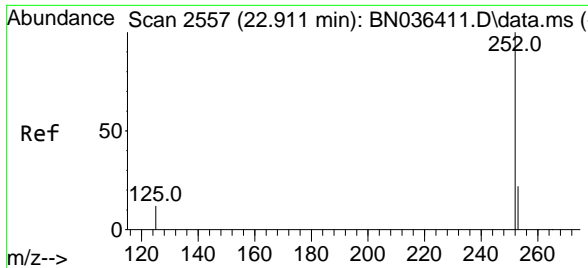
Tgt Ion	Resp	Lower	Upper
149	1753		
167	22.8	21.2	31.8
279	0.0	2.7	4.1#



#35  
 Perylene-d12  
 Concen: 0.400 ng  
 RT: 23.557 min Scan# 2778  
 Delta R.T. 0.006 min  
 Lab File: BN036529.D  
 Acq: 05 Mar 2025 18:07

Tgt Ion	Resp	Lower	Upper
264	5265		
260	27.0	20.9	31.3
265	99.4	60.7	91.1#





#37  
 Benzo(b)fluoranthene  
 Concen: 0.025 ng  
 RT: 22.879 min Scan# 21  
 Delta R.T. 0.006 min  
 Lab File: BN036529.D  
 Acq: 05 Mar 2025 18:07

Instrument :  
 BNA\_N  
 ClientSampleId :  
 RW7-SP303-20250228

Tgt Ion:252 Resp: 432

Ion	Ratio	Lower	Upper
252	100		
253	85.6	21.9	32.9#
125	97.9	15.0	22.6#

