

Data Path : Z:\svoasrv\HPCHEM1\BNA\_N\Data\BN030525\  
 Data File : BN036531.D  
 Acq On : 05 Mar 2025 19:18  
 Operator : RC/JU  
 Sample : PB166992BSD  
 Misc :  
 ALS Vial : 9 Sample Multiplier: 1

Instrument :  
 BNA\_N  
 ClientSampleId :  
 PB166992BSD

Quant Time: Mar 06 00:03:06 2025  
 Quant Method : Z:\svoasrv\HPCHEM1\BNA\_N\Methods\8270-SIM-BN021025.M  
 Quant Title : ASP BNA STANDARDS FOR 5 POINT CALIBRATION  
 QLast Update : Wed Mar 05 16:08:57 2025  
 Response via : Initial Calibration

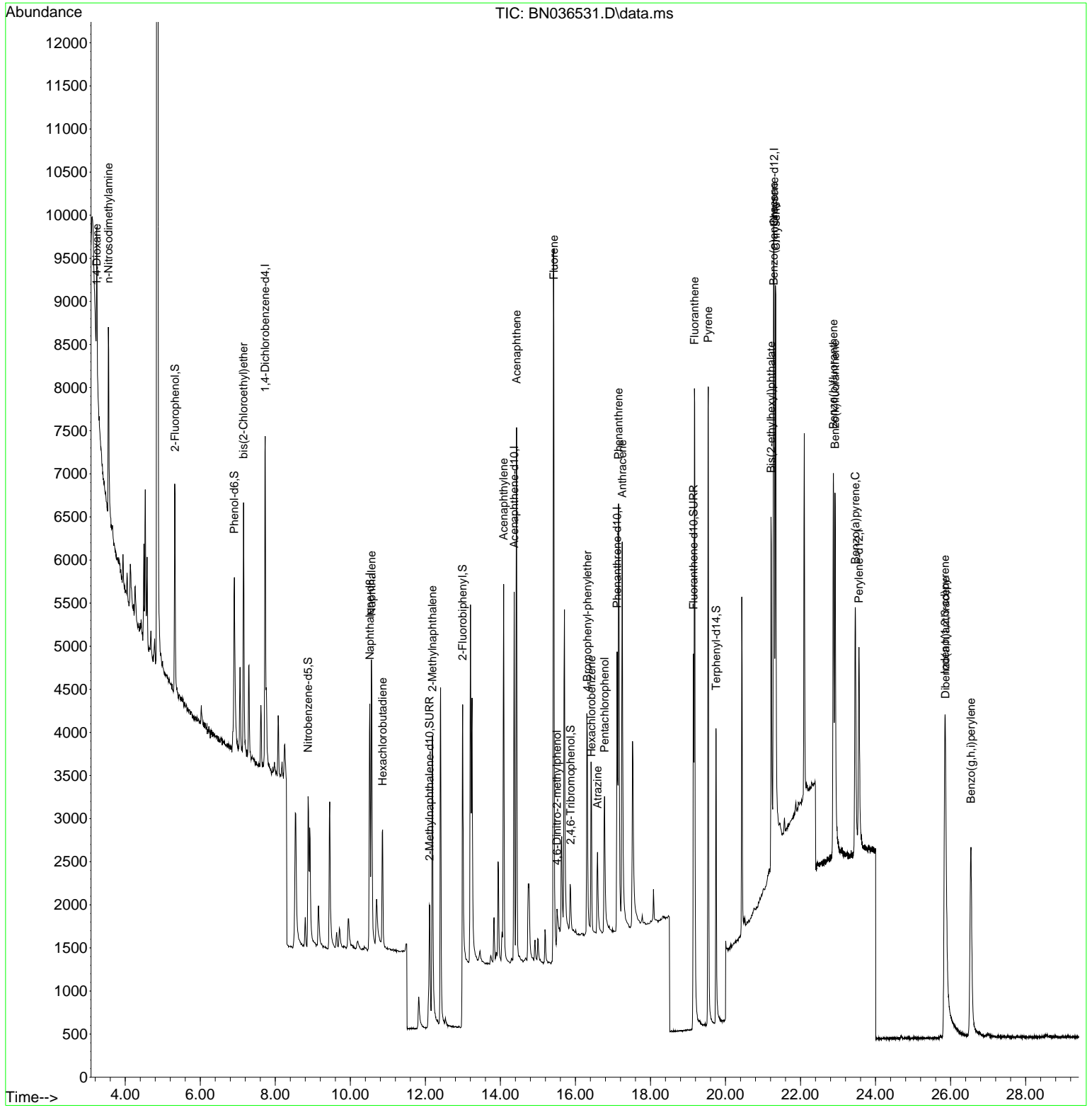
Compound	R.T.	QIon	Response	Conc	Units	Dev(Min)	
Internal Standards							
1) 1,4-Dichlorobenzene-d4	7.732	152	1886	0.400	ng	0.00	
7) Naphthalene-d8	10.520	136	4343	0.400	ng	0.01	
13) Acenaphthene-d10	14.366	164	2423	0.400	ng	0.00	
19) Phenanthrene-d10	17.111	188	4936	0.400	ng	0.00	
29) Chrysene-d12	21.295	240	4101	0.400	ng	# 0.00	
35) Perylene-d12	23.557	264	3858	0.400	ng	# 0.00	
System Monitoring Compounds							
4) 2-Fluorophenol	5.327	112	1860	0.417	ng	0.00	
5) Phenol-d6	6.908	99	2080	0.398	ng	0.00	
8) Nitrobenzene-d5	8.875	82	1742	0.407	ng	0.00	
11) 2-Methylnaphthalene-d10	12.111	152	3306	0.495	ng	0.00	
14) 2,4,6-Tribromophenol	15.870	330	407	0.339	ng	0.01	
15) 2-Fluorobiphenyl	12.993	172	5633	0.618	ng	0.00	
27) Fluoranthene-d10	19.146	212	5524	0.402	ng	0.00	
31) Terphenyl-d14	19.750	244	4044	0.462	ng	0.00	
Target Compounds							
2) 1,4-Dioxane	3.239	88	775	0.376	ng	# 58	Qvalue
3) n-Nitrosodimethylamine	3.550	42	1630	0.455	ng	91	
6) bis(2-Chloroethyl)ether	7.154	93	2180	0.399	ng	97	
9) Naphthalene	10.562	128	4933	0.394	ng	98	
10) Hexachlorobutadiene	10.861	225	1251	0.410	ng	# 99	
12) 2-Methylnaphthalene	12.187	142	3089	0.376	ng	97	
16) Acenaphthylene	14.088	152	5041	0.471	ng	100	
17) Acenaphthene	14.430	154	3166	0.443	ng	98	
18) Fluorene	15.425	166	4113	0.404	ng	97	
20) 4,6-Dinitro-2-methylph...	15.510	198	269	0.278	ng	# 81	
21) 4-Bromophenyl-phenylether	16.317	248	1233	0.419	ng	# 81	
22) Hexachlorobenzene	16.429	284	1525	0.419	ng	96	
23) Atrazine	16.590	200	1087	0.442	ng	95	
24) Pentachlorophenol	16.776	266	1113	0.645	ng	99	
25) Phenanthrene	17.149	178	6334	0.444	ng	99	
26) Anthracene	17.248	178	6001	0.477	ng	99	
28) Fluoranthene	19.174	202	7495	0.428	ng	99	
30) Pyrene	19.541	202	7760	0.491	ng	99	
32) Benzo(a)anthracene	21.286	228	6200	0.459	ng	98	
33) Chrysene	21.340	228	6883	0.471	ng	99	
34) Bis(2-ethylhexyl)phtha...	21.214	149	3851	0.458	ng	99	
36) Indeno(1,2,3-cd)pyrene	25.849	276	6430	0.477	ng	99	
37) Benzo(b)fluoranthene	22.876	252	5588	0.440	ng	97	
38) Benzo(k)fluoranthene	22.920	252	6430	0.492	ng	95	
39) Benzo(a)pyrene	23.461	252	5395	0.487	ng	94	
40) Dibenzo(a,h)anthracene	25.864	278	4774	0.449	ng	96	
41) Benzo(g,h,i)perylene	26.542	276	5348	0.443	ng	98	

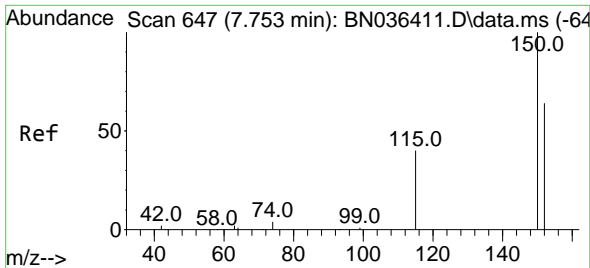
(#) = qualifier out of range (m) = manual integration (+) = signals summed

Data Path : Z:\svoasrv\HPCHEM1\BNA\_N\Data\BN030525\  
 Data File : BN036531.D  
 Acq On : 05 Mar 2025 19:18  
 Operator : RC/JU  
 Sample : PB166992BSD  
 Misc :  
 ALS Vial : 9 Sample Multiplier: 1

**Instrument :**  
 BNA\_N  
**ClientSampleId :**  
 PB166992BSD

Quant Time: Mar 06 00:03:06 2025  
 Quant Method : Z:\svoasrv\HPCHEM1\BNA\_N\Methods\8270-SIM-BN021025.M  
 Quant Title : ASP BNA STANDARDS FOR 5 POINT CALIBRATION  
 QLast Update : Wed Mar 05 16:08:57 2025  
 Response via : Initial Calibration

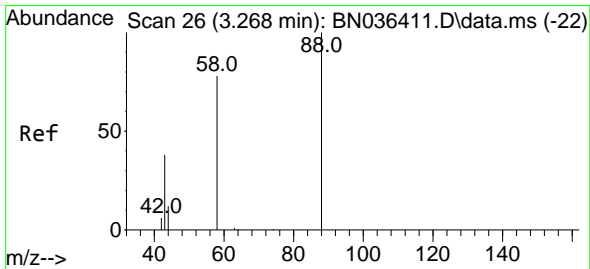
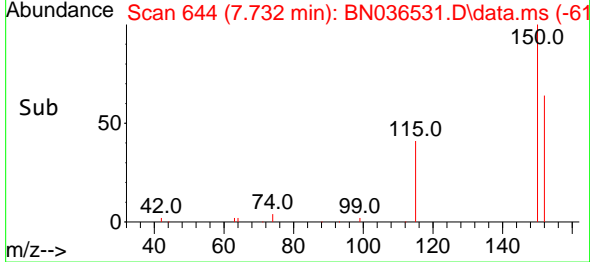
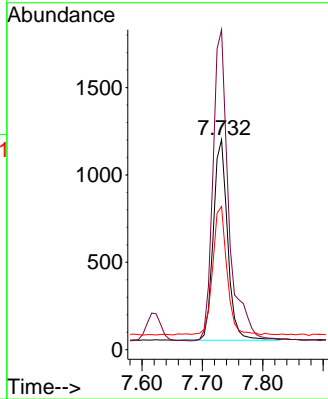
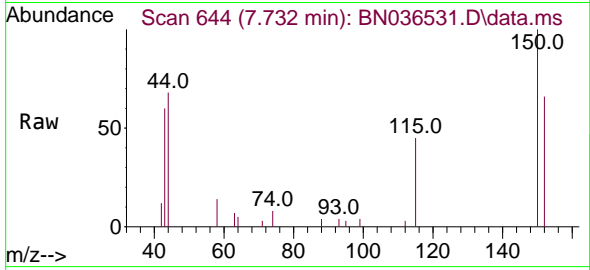




#1  
 1,4-Dichlorobenzene-d4  
 Concen: 0.400 ng  
 RT: 7.732 min Scan# 64  
 Delta R.T. -0.000 min  
 Lab File: BN036531.D  
 Acq: 05 Mar 2025 19:18

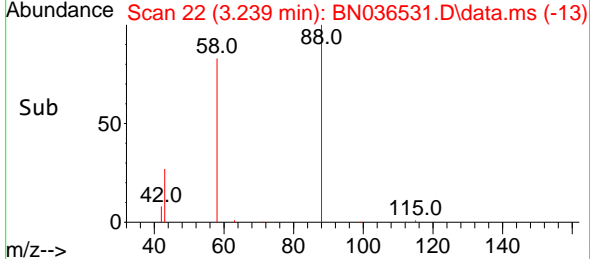
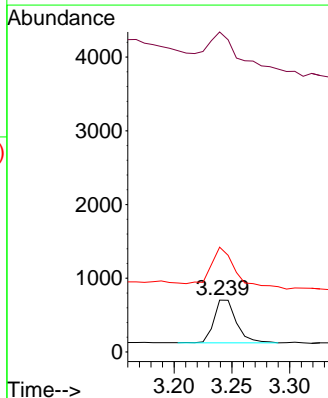
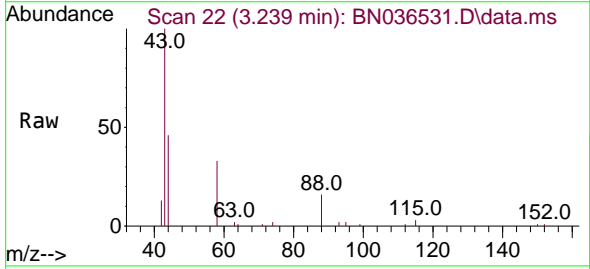
Instrument :  
 BNA\_N  
 ClientSampleId :  
 PB166992BSD

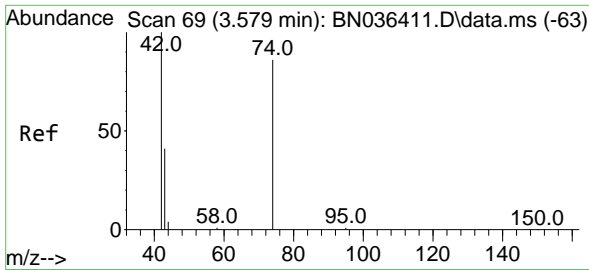
Tgt Ion:152 Resp: 1886  
 Ion Ratio Lower Upper  
 152 100  
 150 152.3 123.7 185.5  
 115 68.1 52.5 78.7



#2  
 1,4-Dioxane  
 Concen: 0.376 ng  
 RT: 3.239 min Scan# 22  
 Delta R.T. -0.007 min  
 Lab File: BN036531.D  
 Acq: 05 Mar 2025 19:18

Tgt Ion: 88 Resp: 775  
 Ion Ratio Lower Upper  
 88 100  
 43 110.6 33.7 50.5#  
 58 94.6 68.9 103.3

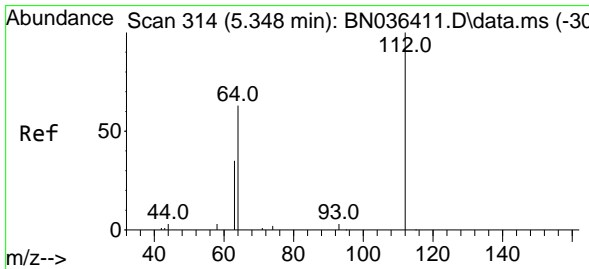
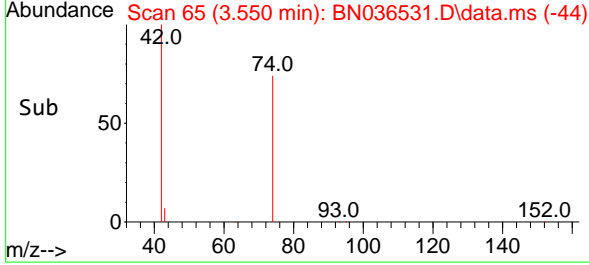
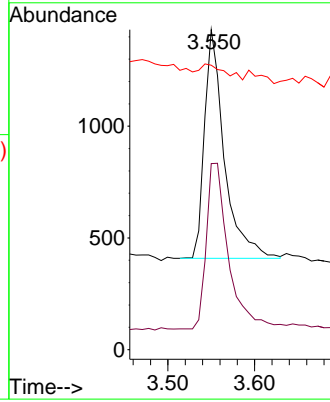
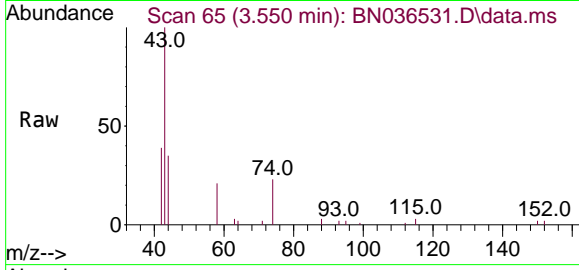




#3  
 n-Nitrosodimethylamine  
 Concen: 0.455 ng  
 RT: 3.550 min Scan# 61  
 Delta R.T. 0.000 min  
 Lab File: BN036531.D  
 Acq: 05 Mar 2025 19:18

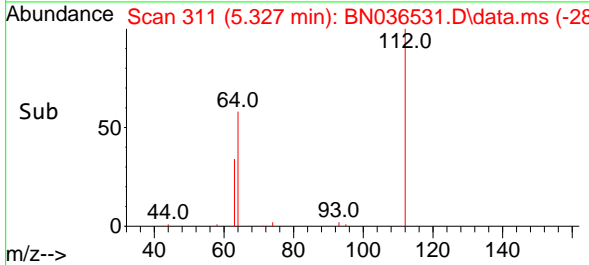
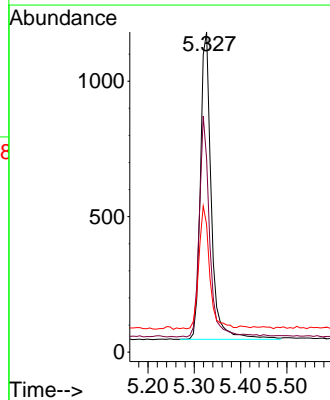
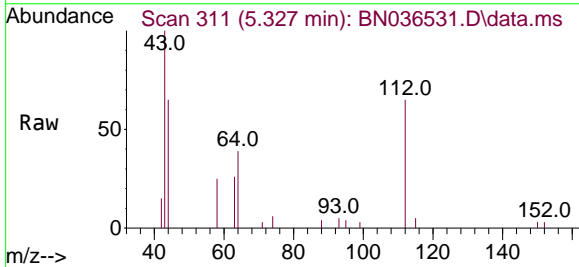
Instrument :  
 BNA\_N  
 ClientSampleId :  
 PB166992BSD

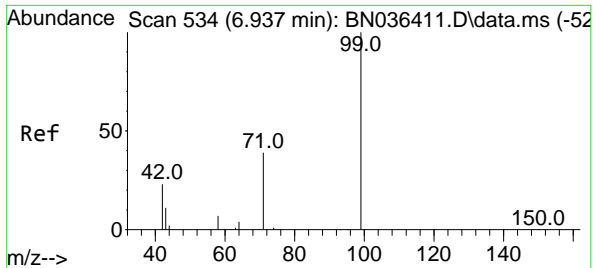
Tgt Ion: 42 Resp: 1630  
 Ion Ratio Lower Upper  
 42 100  
 74 81.1 71.8 107.6  
 44 8.5 7.8 11.6



#4  
 2-Fluorophenol  
 Concen: 0.417 ng  
 RT: 5.327 min Scan# 311  
 Delta R.T. 0.007 min  
 Lab File: BN036531.D  
 Acq: 05 Mar 2025 19:18

Tgt Ion: 112 Resp: 1860  
 Ion Ratio Lower Upper  
 112 100  
 64 68.5 53.4 80.0  
 63 39.3 30.3 45.5

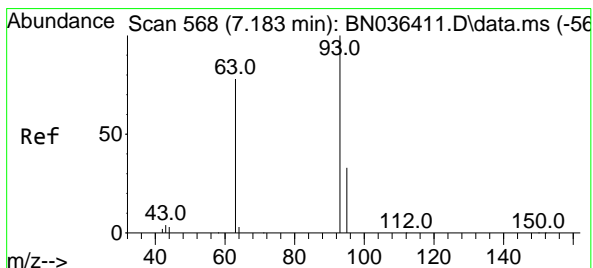
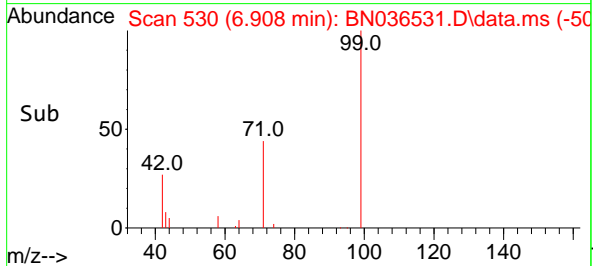
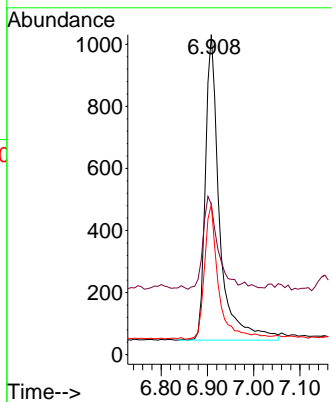
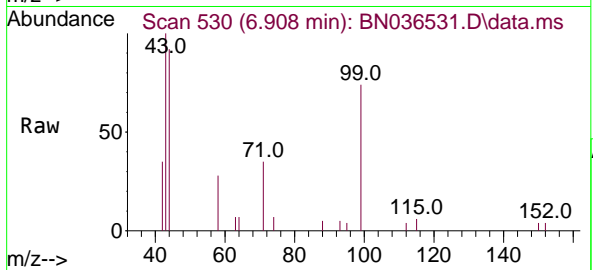




#5  
 Phenol-d6  
 Concen: 0.398 ng  
 RT: 6.908 min Scan# 51  
 Delta R.T. 0.007 min  
 Lab File: BN036531.D  
 Acq: 05 Mar 2025 19:18

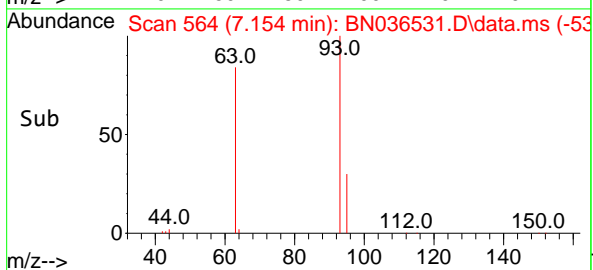
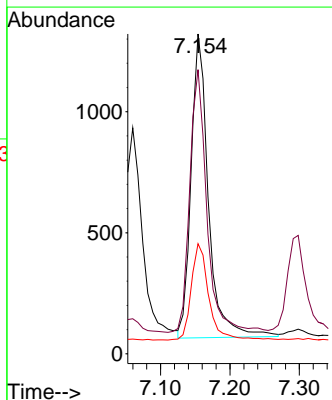
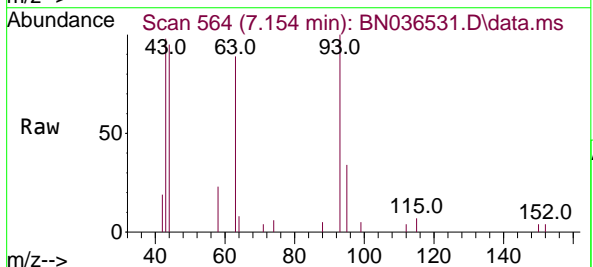
Instrument :  
 BNA\_N  
 ClientSampleId :  
 PB166992BSD

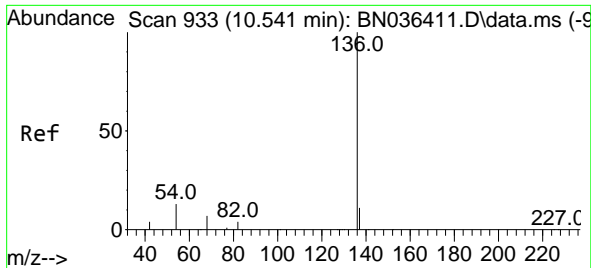
Tgt Ion	Resp	Lower	Upper
99	2080		
42	31.8	21.7	32.5
71	43.9	32.6	49.0



#6  
 bis(2-Chloroethyl)ether  
 Concen: 0.399 ng  
 RT: 7.154 min Scan# 564  
 Delta R.T. 0.000 min  
 Lab File: BN036531.D  
 Acq: 05 Mar 2025 19:18

Tgt Ion	Resp	Lower	Upper
93	2180		
63	85.4	66.3	99.5
95	31.7	26.2	39.4



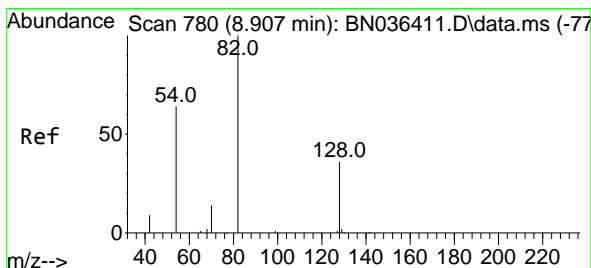
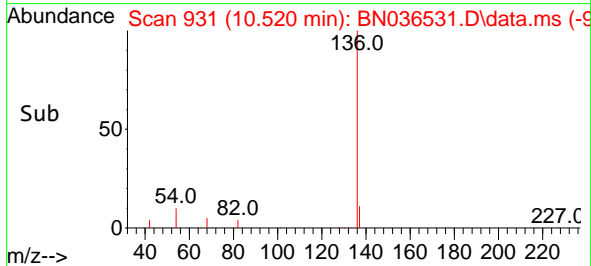
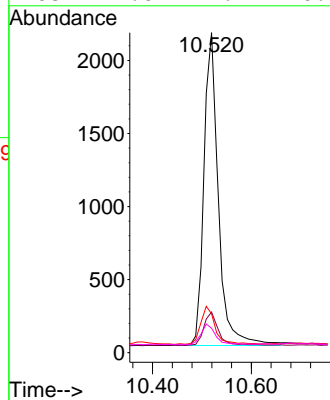
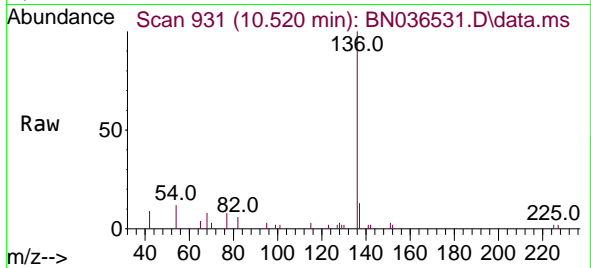


#7  
 Naphthalene-d8  
 Concen: 0.400 ng  
 RT: 10.520 min Scan# 911  
 Delta R.T. 0.011 min  
 Lab File: BN036531.D  
 Acq: 05 Mar 2025 19:18

Instrument :  
 BNA\_N  
 ClientSampleId :  
 PB166992BSD

Tgt Ion:136 Resp: 4343

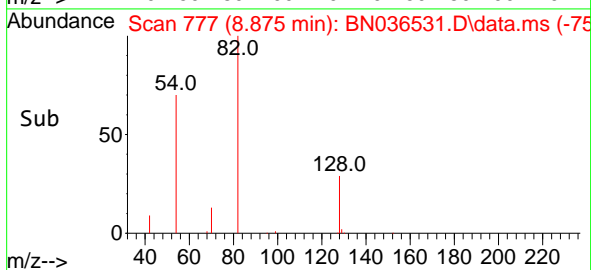
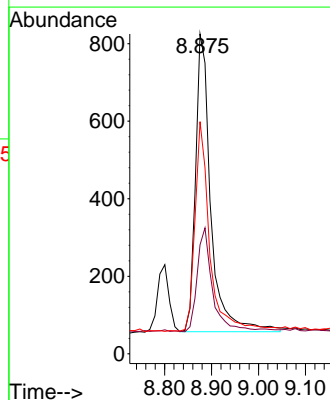
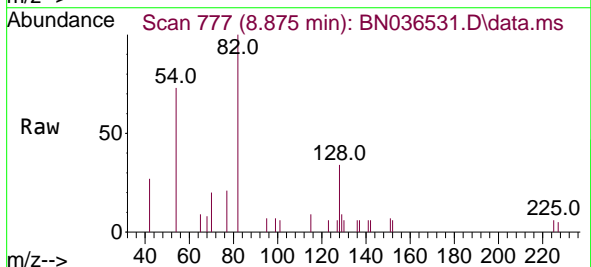
Ion	Ratio	Lower	Upper
136	100		
137	12.7	10.1	15.1
54	12.1	11.8	17.6
68	7.6	7.2	10.8

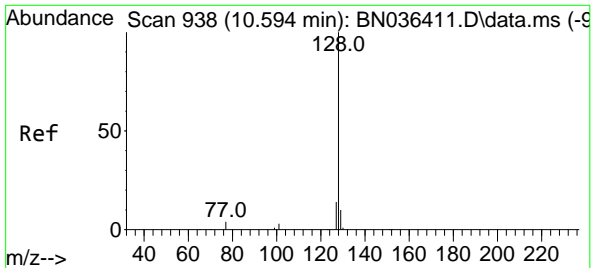


#8  
 Nitrobenzene-d5  
 Concen: 0.407 ng  
 RT: 8.875 min Scan# 777  
 Delta R.T. 0.000 min  
 Lab File: BN036531.D  
 Acq: 05 Mar 2025 19:18

Tgt Ion: 82 Resp: 1742

Ion	Ratio	Lower	Upper
82	100		
128	34.1	31.9	47.9
54	72.6	53.1	79.7



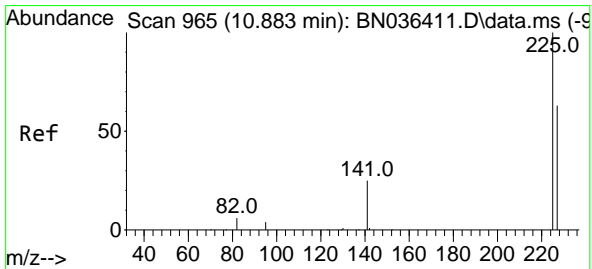
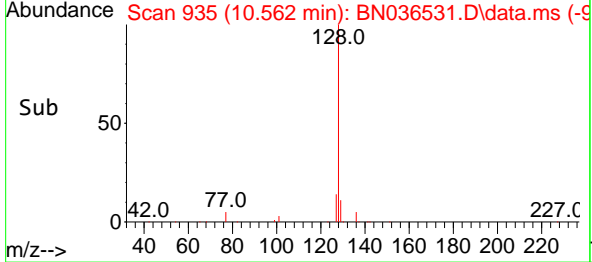
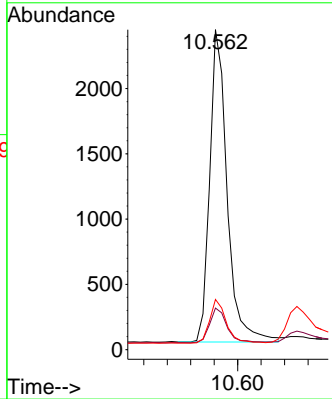
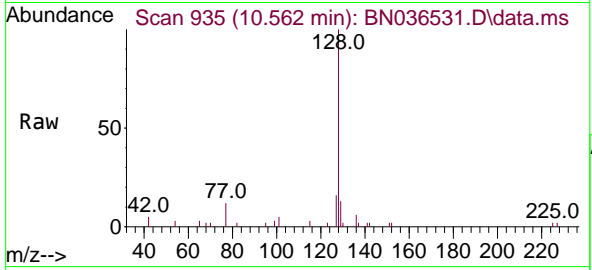


#9  
 Naphthalene  
 Concen: 0.394 ng  
 RT: 10.562 min Scan# 91  
 Delta R.T. 0.000 min  
 Lab File: BN036531.D  
 Acq: 05 Mar 2025 19:18

Instrument :  
 BNA\_N  
 ClientSampleId :  
 PB166992BSD

Tgt Ion:128 Resp: 4933

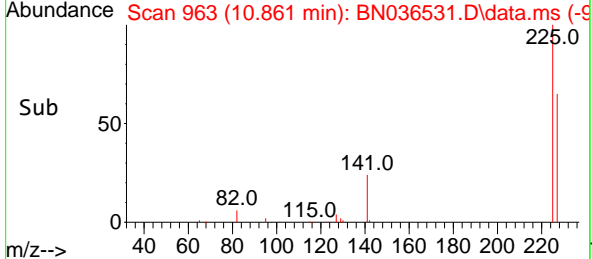
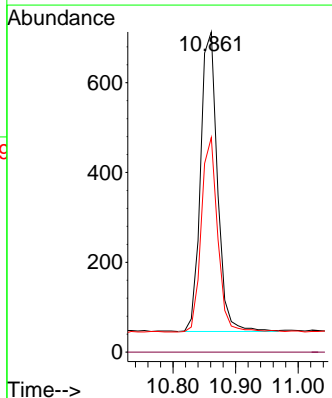
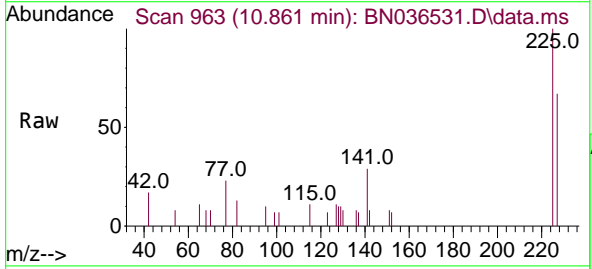
Ion	Ratio	Lower	Upper
128	100		
129	13.0	9.6	14.4
127	15.7	12.0	18.0

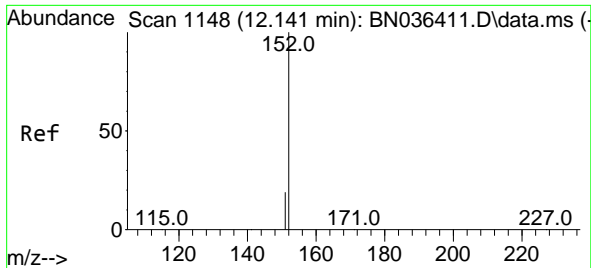


#10  
 Hexachlorobutadiene  
 Concen: 0.410 ng  
 RT: 10.861 min Scan# 963  
 Delta R.T. 0.011 min  
 Lab File: BN036531.D  
 Acq: 05 Mar 2025 19:18

Tgt Ion:225 Resp: 1251

Ion	Ratio	Lower	Upper
225	100		
223	0.0	0.0	0.0
227	63.1	50.9	76.3

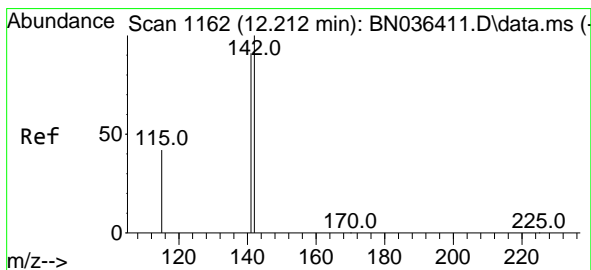
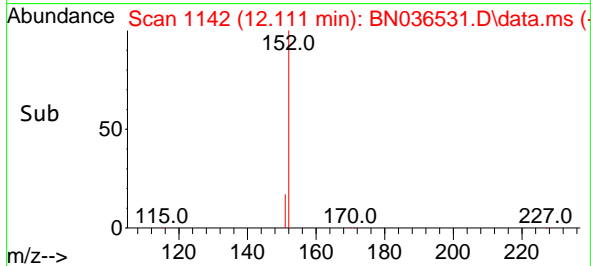
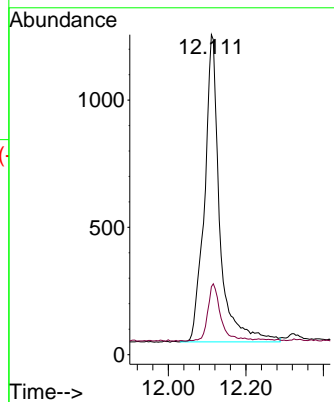
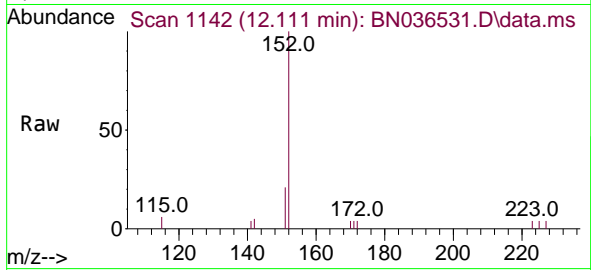




#11  
 2-Methylnaphthalene-d10  
 Concen: 0.495 ng  
 RT: 12.111 min Scan# 1142  
 Delta R.T. 0.005 min  
 Lab File: BN036531.D  
 Acq: 05 Mar 2025 19:18

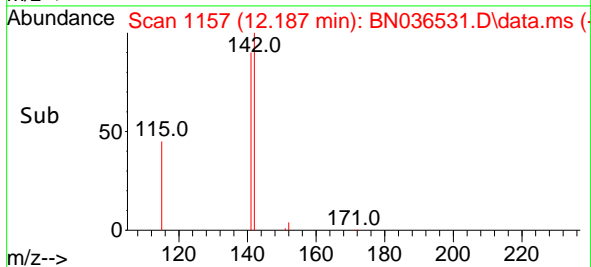
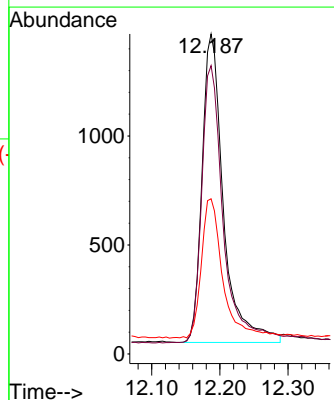
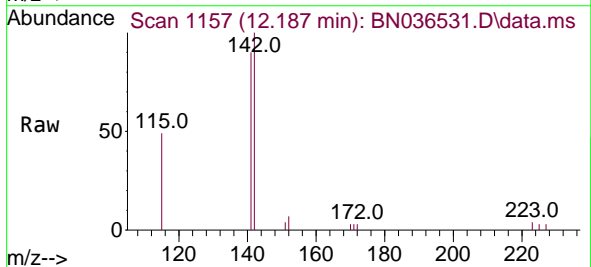
Instrument :  
 BNA\_N  
 ClientSampleId :  
 PB166992BSD

Tgt Ion:152 Resp: 3306  
 Ion Ratio Lower Upper  
 152 100  
 151 15.1 16.6 25.0#

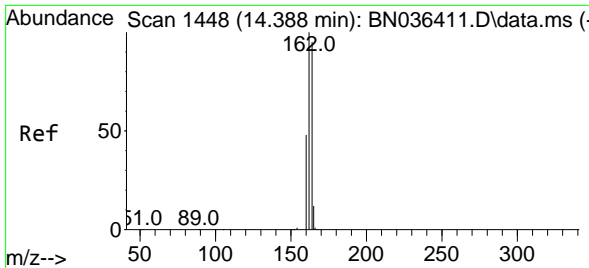


#12  
 2-Methylnaphthalene  
 Concen: 0.376 ng  
 RT: 12.187 min Scan# 1157  
 Delta R.T. 0.005 min  
 Lab File: BN036531.D  
 Acq: 05 Mar 2025 19:18

Tgt Ion:142 Resp: 3089  
 Ion Ratio Lower Upper  
 142 100  
 141 90.1 72.8 109.2  
 115 48.5 35.5 53.3



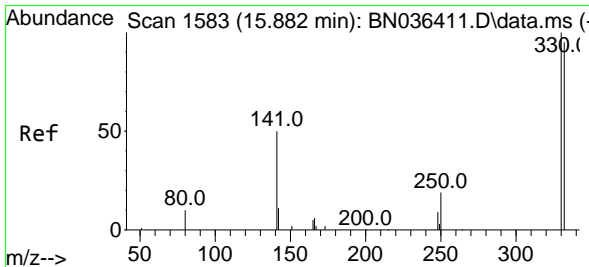
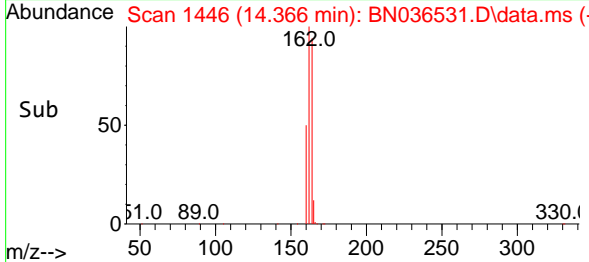
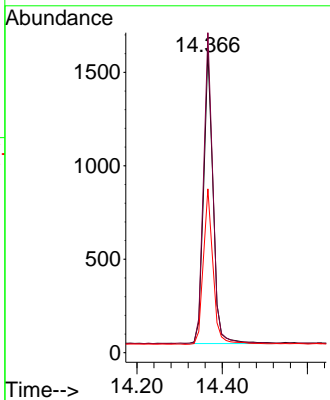
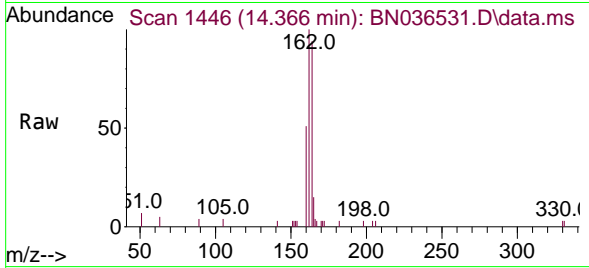




#13  
 Acenaphthene-d10  
 Concen: 0.400 ng  
 RT: 14.366 min Scan# 14  
 Delta R.T. 0.000 min  
 Lab File: BN036531.D  
 Acq: 05 Mar 2025 19:18

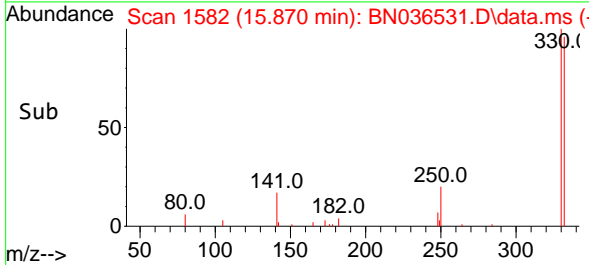
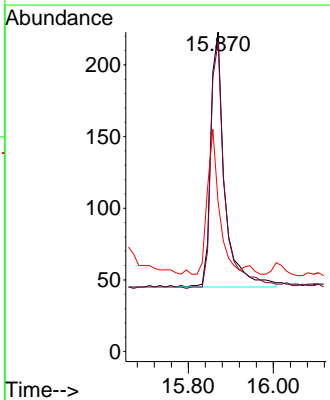
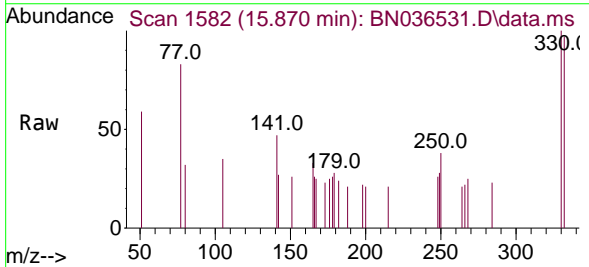
Instrument : BNA\_N  
 ClientSampleId : PB166992BSD

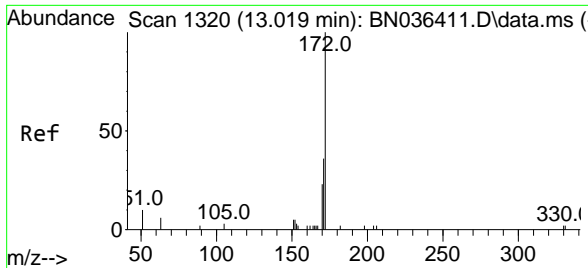
Tgt Ion	Resp	Lower	Upper
164	100		
162	106.0	84.1	126.1
160	54.3	41.4	62.0



#14  
 2,4,6-Tribromophenol  
 Concen: 0.339 ng  
 RT: 15.870 min Scan# 1582  
 Delta R.T. 0.012 min  
 Lab File: BN036531.D  
 Acq: 05 Mar 2025 19:18

Tgt Ion	Resp	Lower	Upper
330	100		
332	98.3	76.6	114.8
141	48.4	37.8	56.8



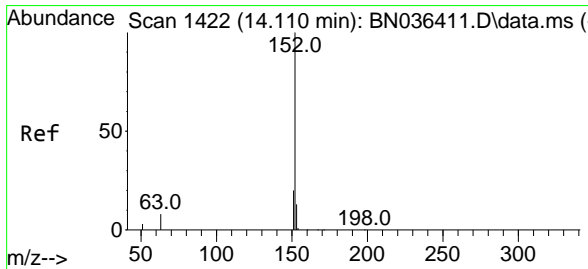
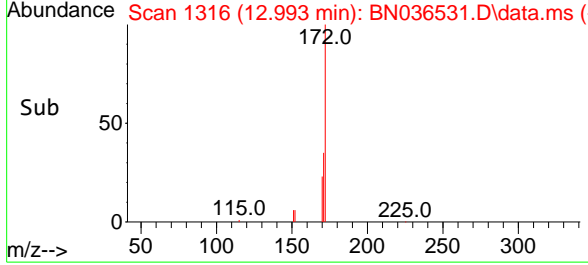
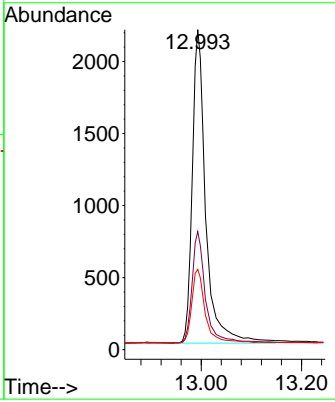
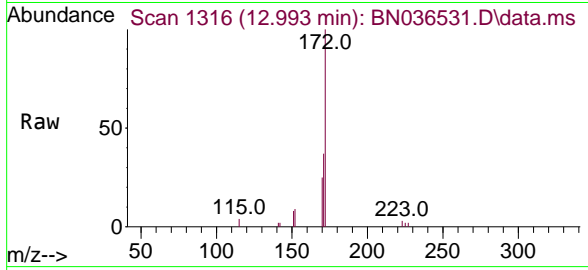


#15  
 2-Fluorobiphenyl  
 Concen: 0.618 ng  
 RT: 12.993 min Scan# 11  
 Delta R.T. 0.005 min  
 Lab File: BN036531.D  
 Acq: 05 Mar 2025 19:18

Instrument : BNA\_N  
 ClientSampleId : PB166992BSD

Tgt Ion:172 Resp: 5633

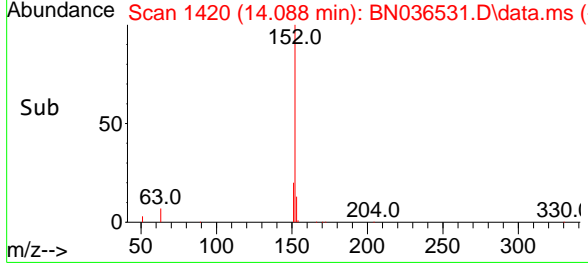
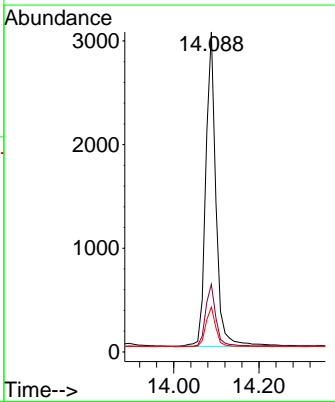
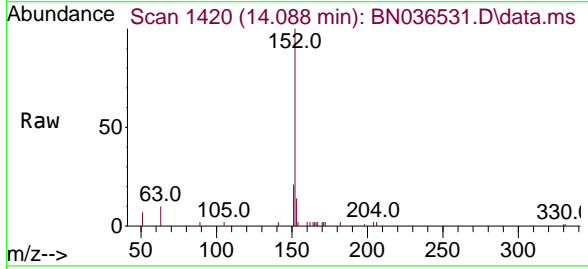
Ion	Ratio	Lower	Upper
172	100		
171	36.9	29.6	44.4
170	25.1	19.8	29.6

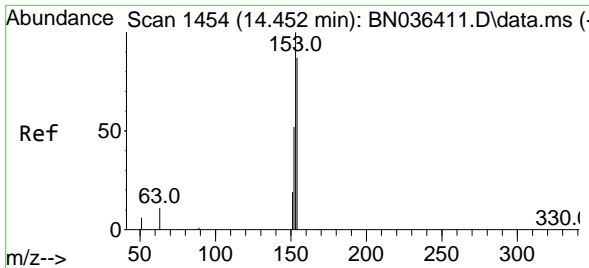


#16  
 Acenaphthylene  
 Concen: 0.471 ng  
 RT: 14.088 min Scan# 1420  
 Delta R.T. 0.011 min  
 Lab File: BN036531.D  
 Acq: 05 Mar 2025 19:18

Tgt Ion:152 Resp: 5041

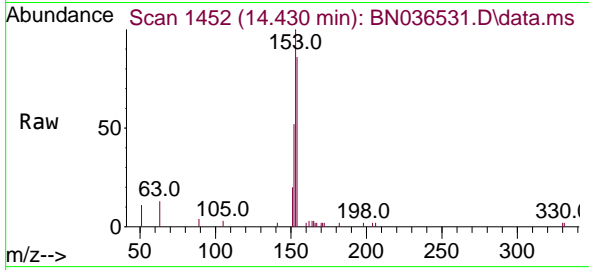
Ion	Ratio	Lower	Upper
152	100		
151	19.7	15.8	23.8
153	12.7	10.2	15.2



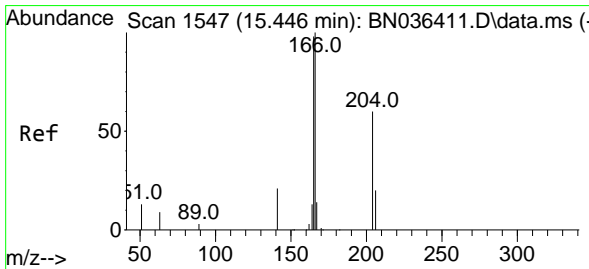
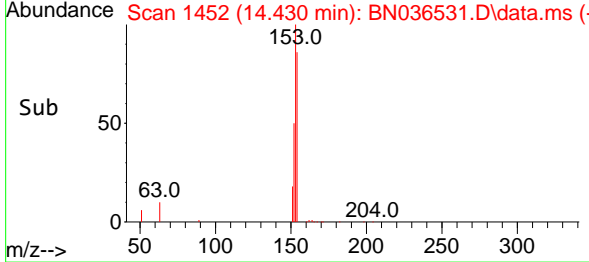
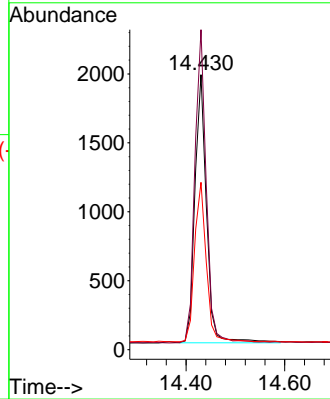


#17  
 Acenaphthene  
 Concen: 0.443 ng  
 RT: 14.430 min Scan# 14  
 Delta R.T. 0.000 min  
 Lab File: BN036531.D  
 Acq: 05 Mar 2025 19:18

Instrument :  
 BNA\_N  
 ClientSampleId :  
 PB166992BSD

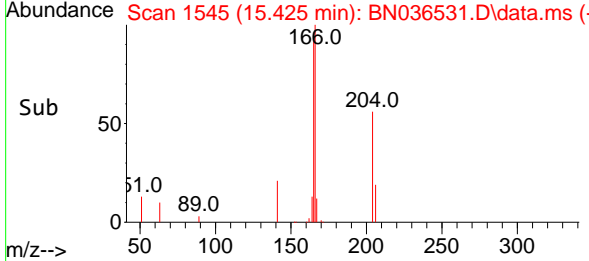
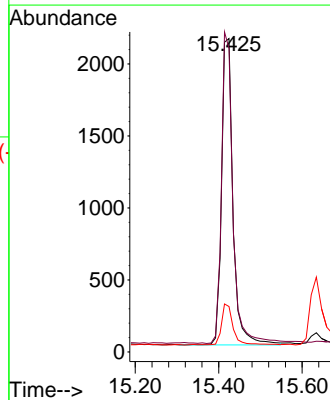
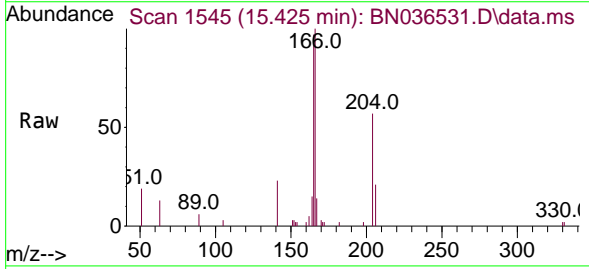


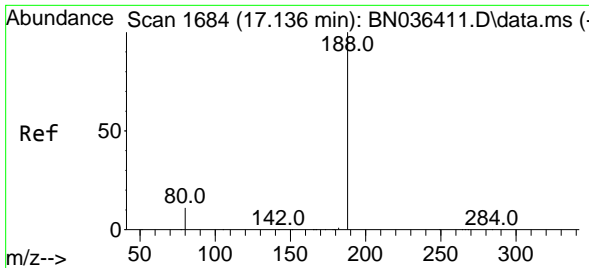
Tgt Ion:154 Resp: 3166  
 Ion Ratio Lower Upper  
 154 100  
 153 115.1 93.3 139.9  
 152 59.6 48.8 73.2



#18  
 Fluorene  
 Concen: 0.404 ng  
 RT: 15.425 min Scan# 1545  
 Delta R.T. 0.011 min  
 Lab File: BN036531.D  
 Acq: 05 Mar 2025 19:18

Tgt Ion:166 Resp: 4113  
 Ion Ratio Lower Upper  
 166 100  
 165 102.2 79.5 119.3  
 167 13.4 10.4 15.6

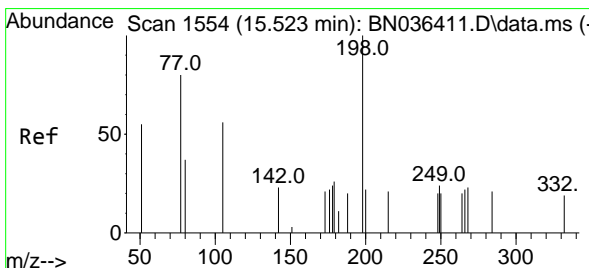
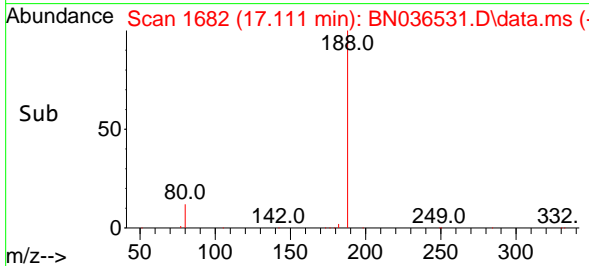
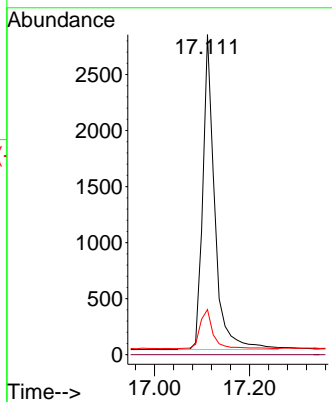
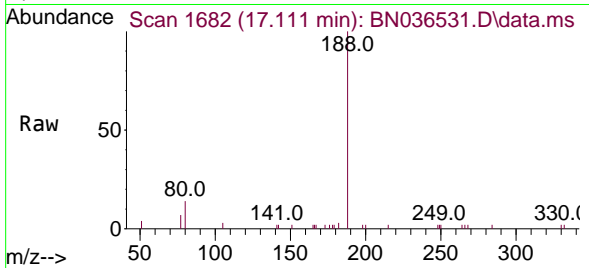




#19  
 Phenanthrene-d10  
 Concen: 0.400 ng  
 RT: 17.111 min Scan# 1  
 Delta R.T. 0.000 min  
 Lab File: BN036531.D  
 Acq: 05 Mar 2025 19:18

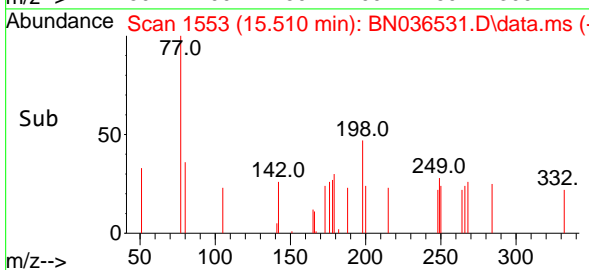
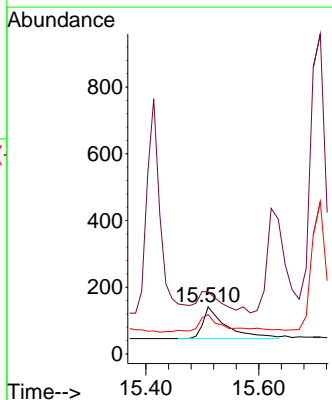
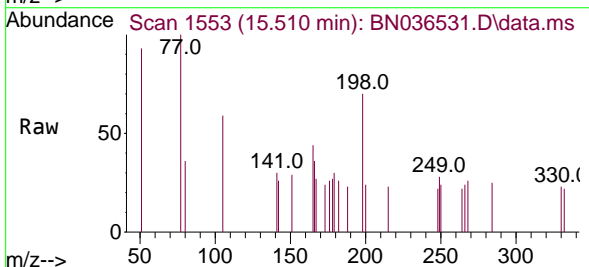
Instrument :  
 BNA\_N  
 ClientSampleId :  
 PB166992BSD

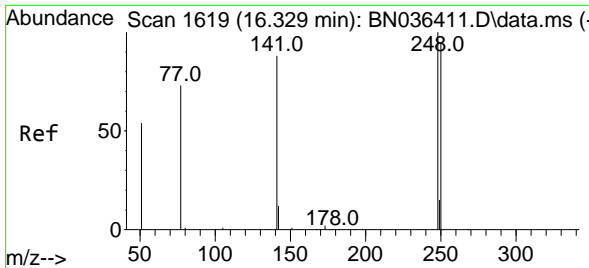
Tgt Ion:188 Resp: 4936  
 Ion Ratio Lower Upper  
 188 100  
 94 0.0 0.0 0.0  
 80 14.1 9.8 14.6



#20  
 4,6-Dinitro-2-methylphenol  
 Concen: 0.278 ng  
 RT: 15.510 min Scan# 1553  
 Delta R.T. 0.011 min  
 Lab File: BN036531.D  
 Acq: 05 Mar 2025 19:18

Tgt Ion:198 Resp: 269  
 Ion Ratio Lower Upper  
 198 100  
 51 131.9 86.6 129.8#  
 105 83.7 57.5 86.3

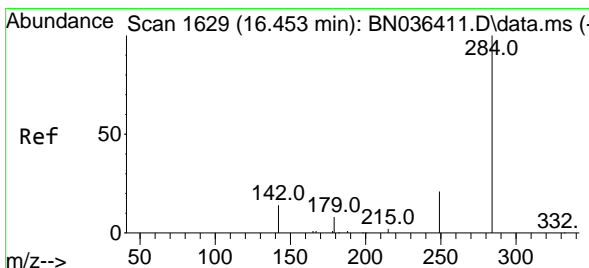
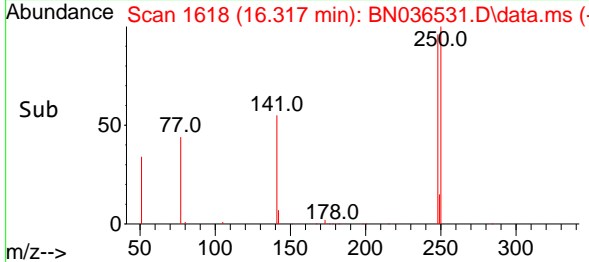
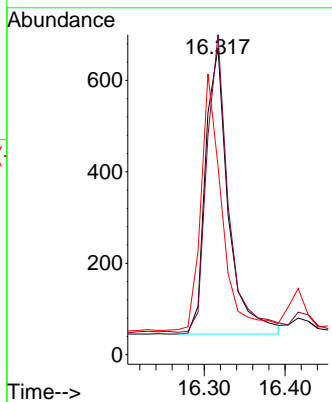
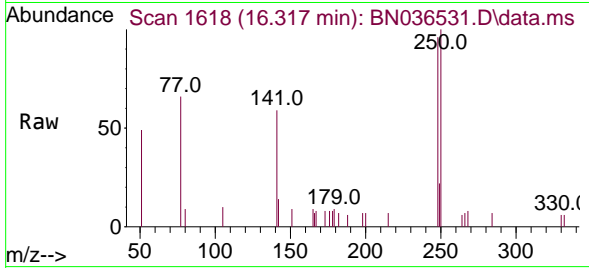




#21  
 4-Bromophenyl-phenylether  
 Concen: 0.419 ng  
 RT: 16.317 min Scan# 1618  
 Delta R.T. 0.012 min  
 Lab File: BN036531.D  
 Acq: 05 Mar 2025 19:18

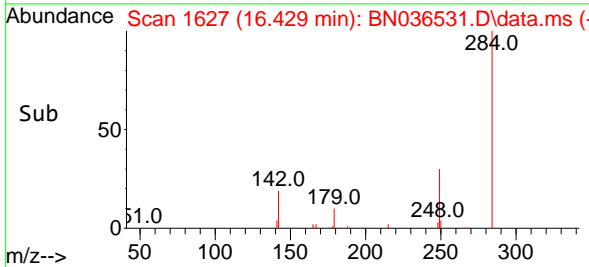
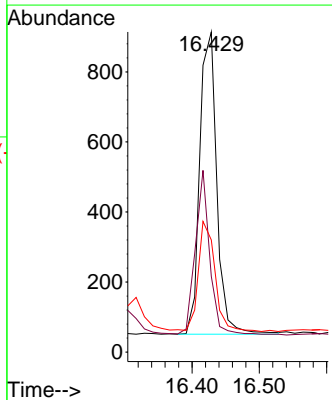
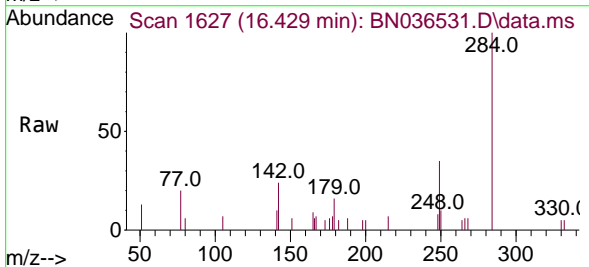
Instrument :  
 BNA\_N  
 ClientSampleId :  
 PB166992BSD

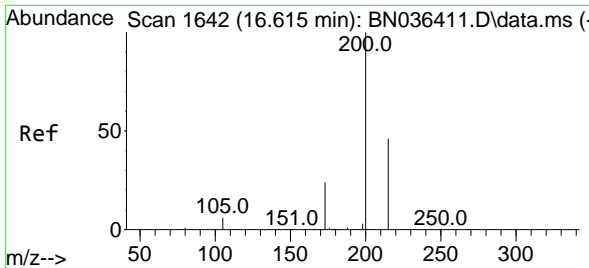
Tgt Ion:248 Resp: 1233  
 Ion Ratio Lower Upper  
 248 100  
 250 104.3 76.1 114.1  
 141 61.4 71.7 107.5#



#22  
 Hexachlorobenzene  
 Concen: 0.419 ng  
 RT: 16.429 min Scan# 1627  
 Delta R.T. 0.012 min  
 Lab File: BN036531.D  
 Acq: 05 Mar 2025 19:18

Tgt Ion:284 Resp: 1525  
 Ion Ratio Lower Upper  
 284 100  
 142 46.0 33.4 50.0  
 249 35.9 28.6 43.0



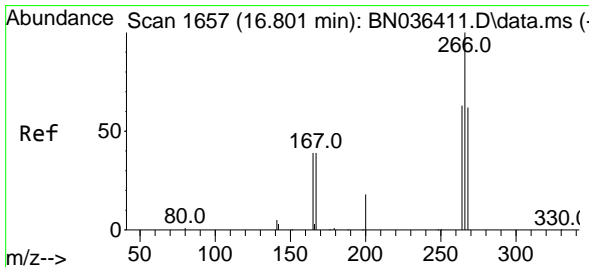
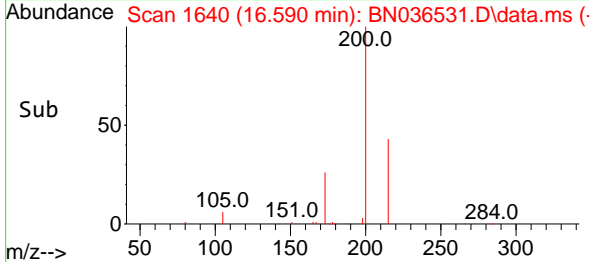
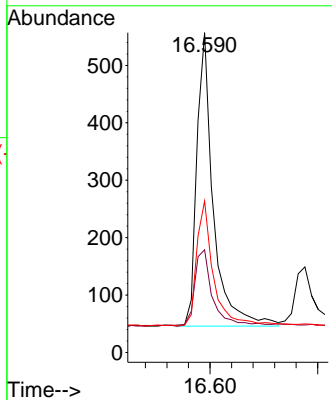
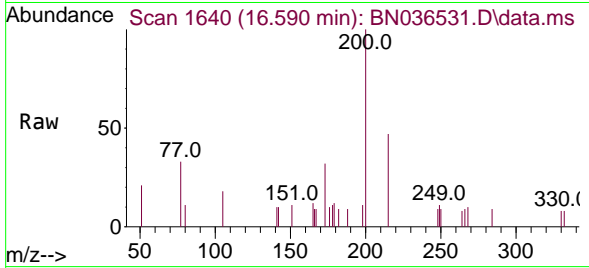


#23  
 Atrazine  
 Concen: 0.442 ng  
 RT: 16.590 min Scan# 1640  
 Delta R.T. 0.012 min  
 Lab File: BN036531.D  
 Acq: 05 Mar 2025 19:18

Instrument : BNA\_N  
 ClientSampleId : PB166992BSD

Tgt Ion:200 Resp: 1087

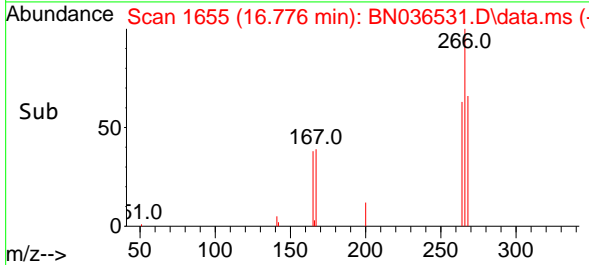
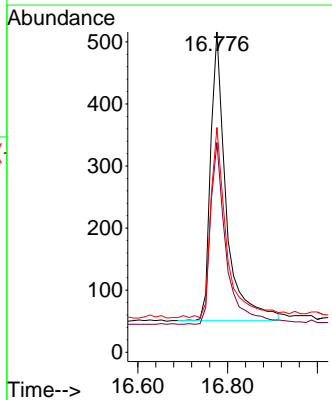
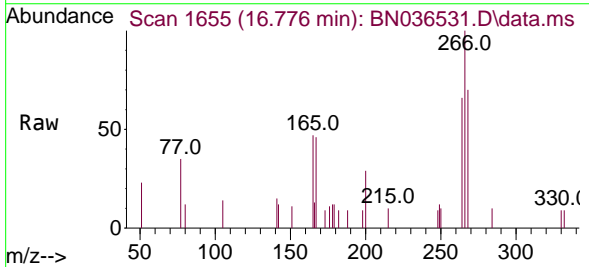
Ion	Ratio	Lower	Upper
200	100		
173	32.1	23.2	34.8
215	47.4	40.0	60.0

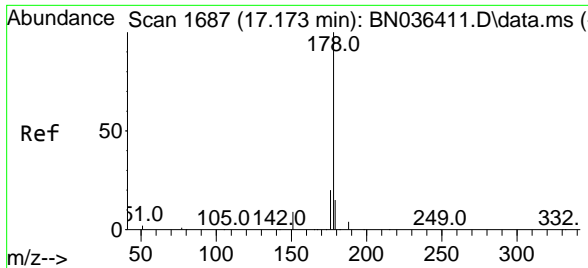


#24  
 Pentachlorophenol  
 Concen: 0.645 ng  
 RT: 16.776 min Scan# 1655  
 Delta R.T. 0.012 min  
 Lab File: BN036531.D  
 Acq: 05 Mar 2025 19:18

Tgt Ion:266 Resp: 1113

Ion	Ratio	Lower	Upper
266	100		
264	63.2	50.6	76.0
268	66.8	51.9	77.9



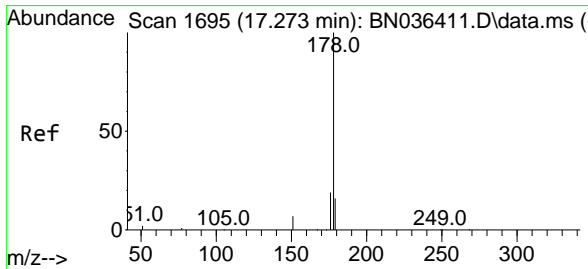
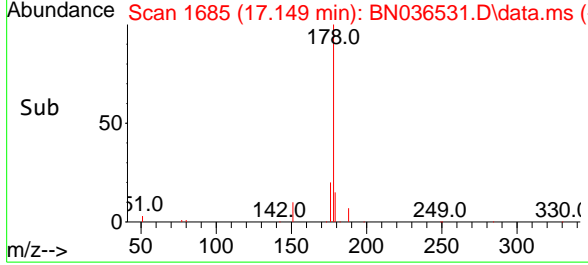
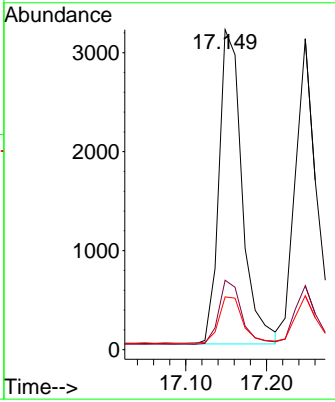
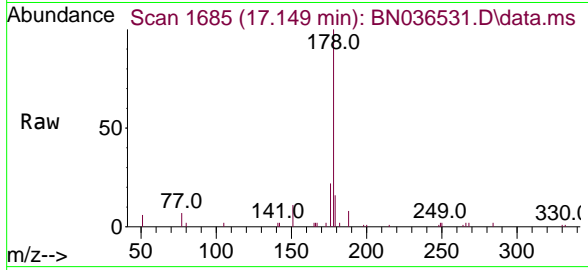


#25  
 Phenanthrene  
 Concen: 0.444 ng  
 RT: 17.149 min Scan# 1685  
 Delta R.T. 0.000 min  
 Lab File: BN036531.D  
 Acq: 05 Mar 2025 19:18

Instrument : BNA\_N  
 ClientSampleId : PB166992BSD

Tgt Ion:178 Resp: 6334

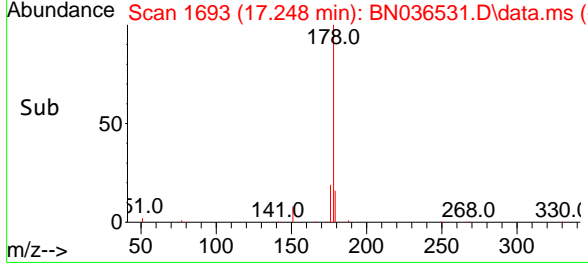
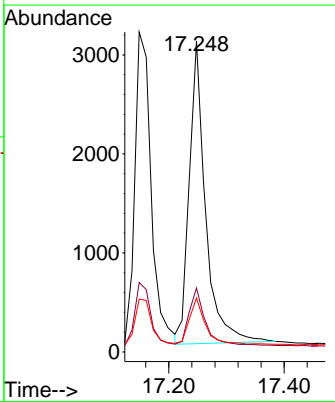
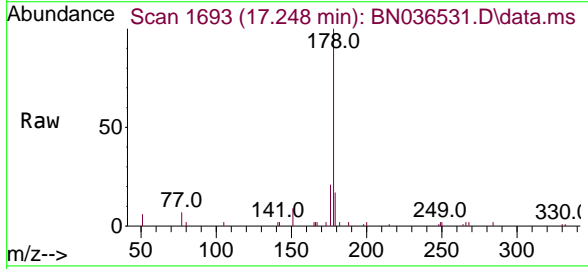
Ion	Ratio	Lower	Upper
178	100		
176	19.9	15.7	23.5
179	15.6	12.4	18.6

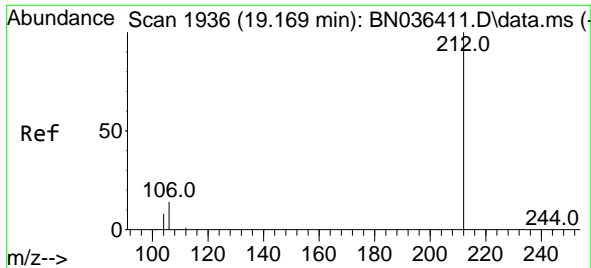


#26  
 Anthracene  
 Concen: 0.477 ng  
 RT: 17.248 min Scan# 1693  
 Delta R.T. 0.012 min  
 Lab File: BN036531.D  
 Acq: 05 Mar 2025 19:18

Tgt Ion:178 Resp: 6001

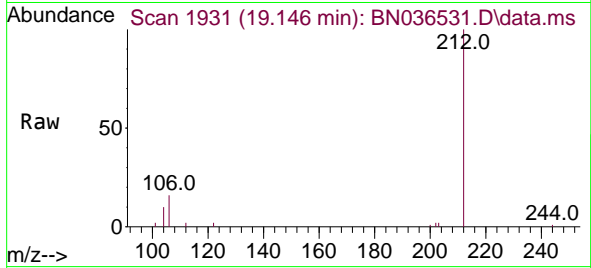
Ion	Ratio	Lower	Upper
178	100		
176	19.2	14.9	22.3
179	15.4	12.4	18.6



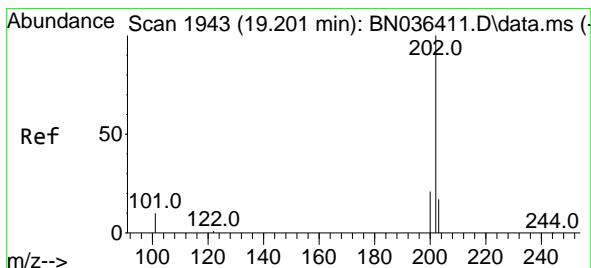
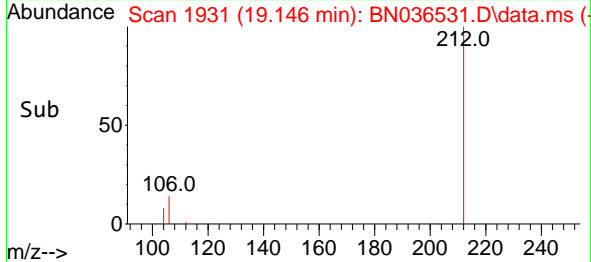
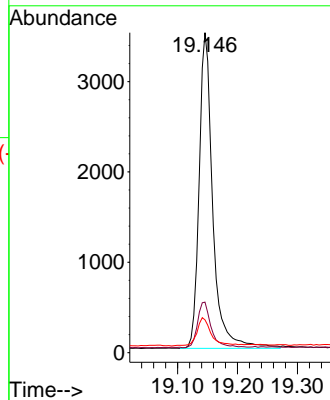


#27  
 Fluoranthene-d10  
 Concen: 0.402 ng  
 RT: 19.146 min Scan# 1931  
 Delta R.T. 0.005 min  
 Lab File: BN036531.D  
 Acq: 05 Mar 2025 19:18

Instrument :  
 BNA\_N  
 ClientSampleId :  
 PB166992BSD

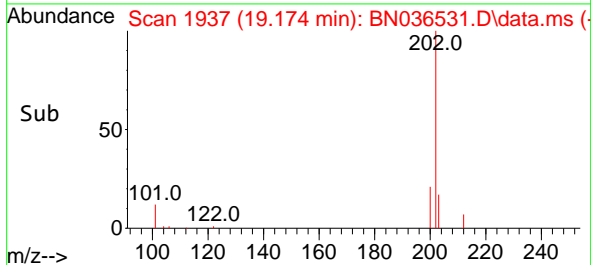
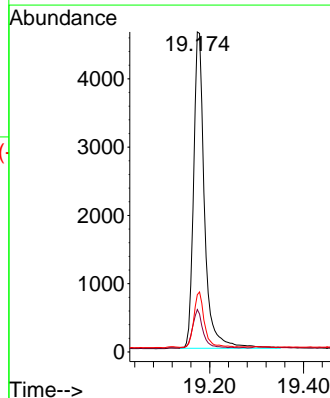
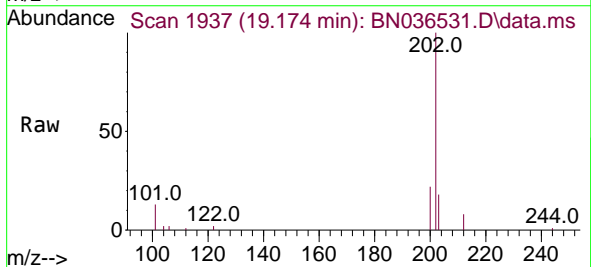


Tgt Ion:212 Resp: 5524  
 Ion Ratio Lower Upper  
 212 100  
 106 14.4 11.5 17.3  
 104 9.5 7.1 10.7

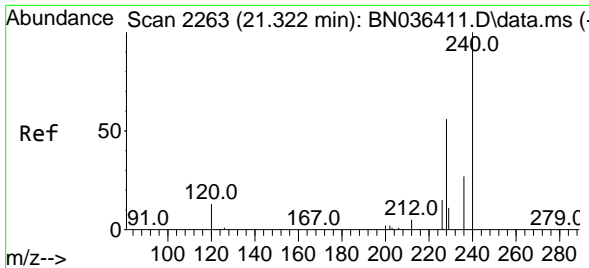


#28  
 Fluoranthene  
 Concen: 0.428 ng  
 RT: 19.174 min Scan# 1937  
 Delta R.T. 0.000 min  
 Lab File: BN036531.D  
 Acq: 05 Mar 2025 19:18

Tgt Ion:202 Resp: 7495  
 Ion Ratio Lower Upper  
 202 100  
 101 11.6 9.2 13.8  
 203 17.3 13.4 20.0



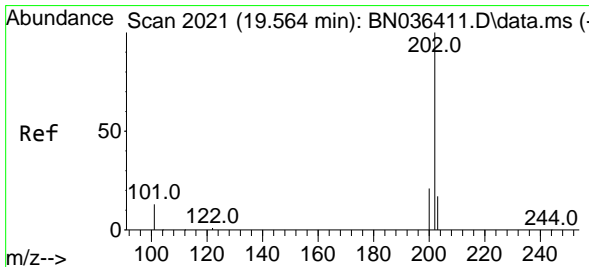
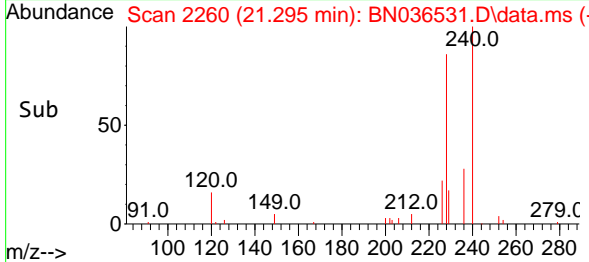
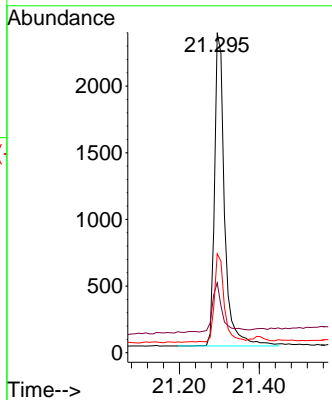
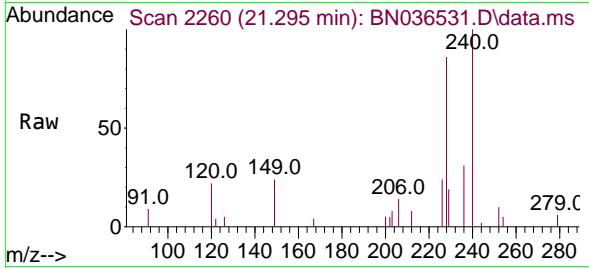




#29  
 Chrysene-d12  
 Concen: 0.400 ng  
 RT: 21.295 min Scan# 21  
 Delta R.T. 0.000 min  
 Lab File: BN036531.D  
 Acq: 05 Mar 2025 19:18

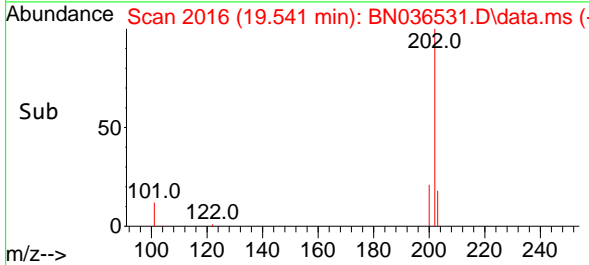
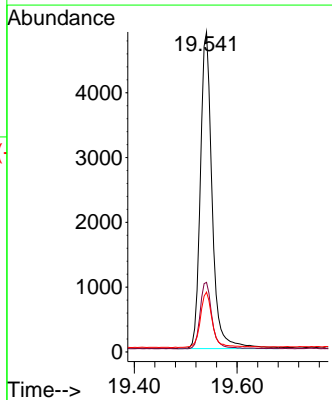
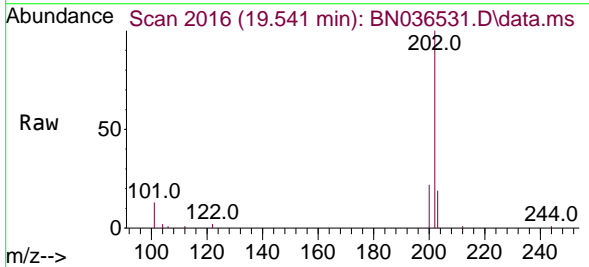
Instrument :  
 BNA\_N  
 ClientSampleId :  
 PB166992BSD

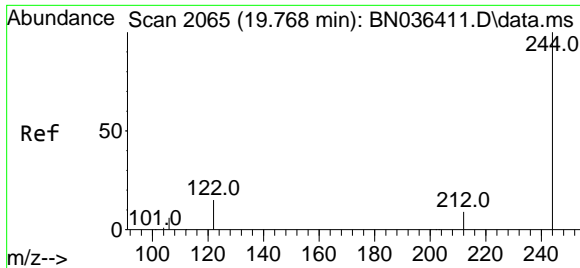
Tgt Ion	Resp	Ion Ratio	Lower	Upper
240	4101	100		
120	21.9	13.3	19.9	
236	30.9	23.0	34.6	



#30  
 Pyrene  
 Concen: 0.491 ng  
 RT: 19.541 min Scan# 2016  
 Delta R.T. 0.005 min  
 Lab File: BN036531.D  
 Acq: 05 Mar 2025 19:18

Tgt Ion	Resp	Ion Ratio	Lower	Upper
202	7760	100		
200	21.2	16.9	25.3	
203	17.9	13.9	20.9	



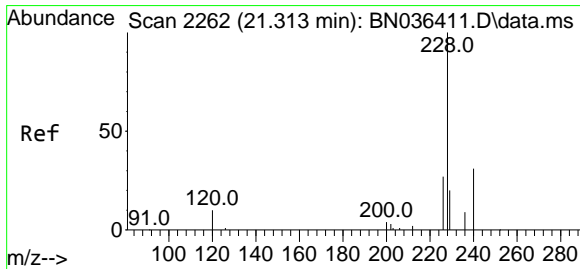
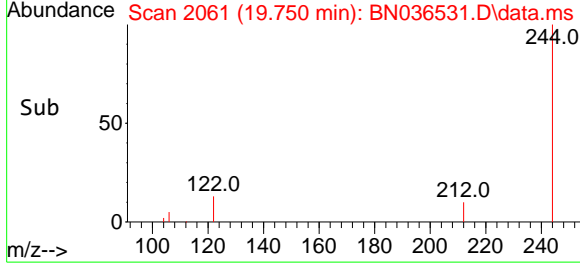
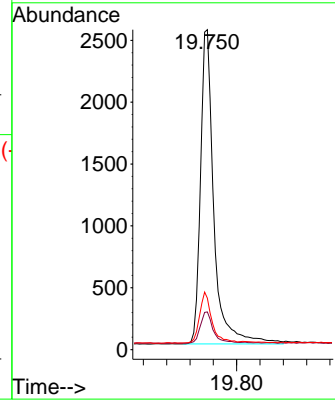
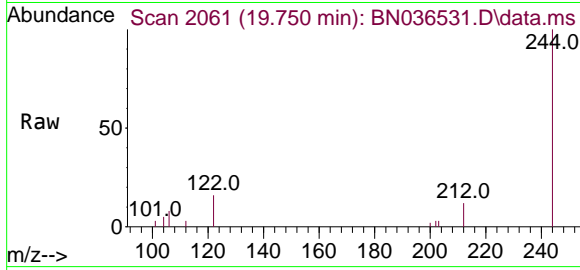


#31  
 Terphenyl-d14  
 Concen: 0.462 ng  
 RT: 19.750 min Scan# 2061  
 Delta R.T. 0.005 min  
 Lab File: BN036531.D  
 Acq: 05 Mar 2025 19:18

Instrument : BNA\_N  
 ClientSampleId : PB166992BSD

Tgt Ion:244 Resp: 4044

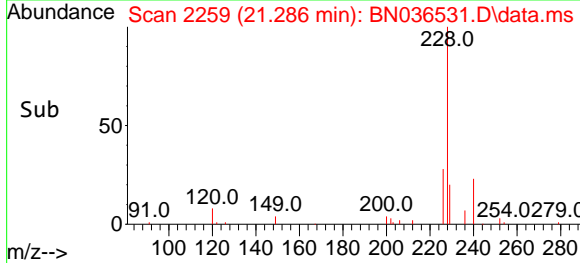
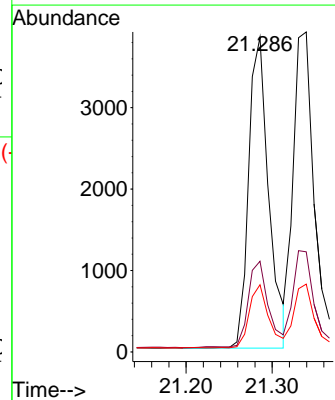
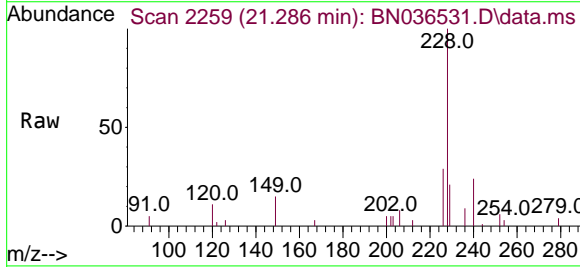
Ion	Ratio	Lower	Upper
244	100		
212	11.8	8.1	12.1
122	16.1	12.8	19.2

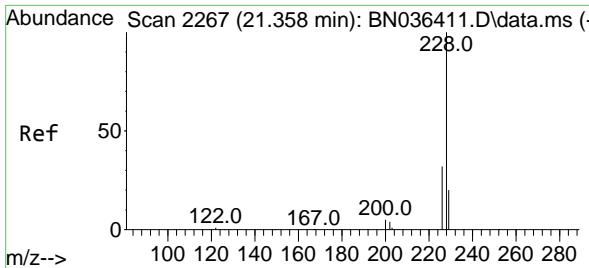


#32  
 Benzo(a)anthracene  
 Concen: 0.459 ng  
 RT: 21.286 min Scan# 2259  
 Delta R.T. 0.009 min  
 Lab File: BN036531.D  
 Acq: 05 Mar 2025 19:18

Tgt Ion:228 Resp: 6200

Ion	Ratio	Lower	Upper
228	100		
226	28.8	22.2	33.2
229	21.3	16.5	24.7

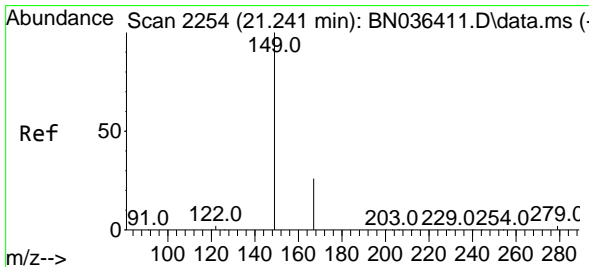
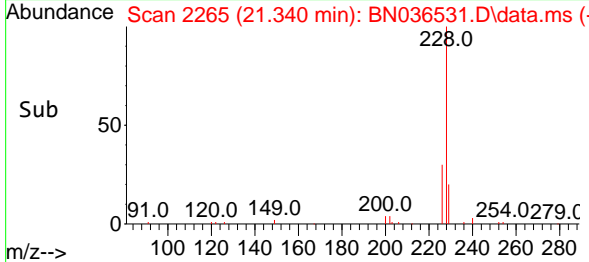
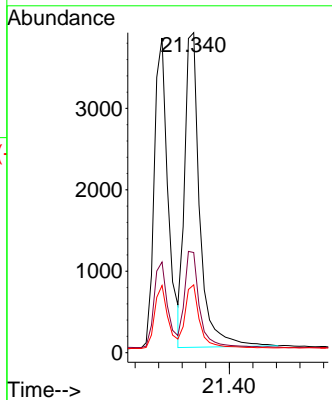
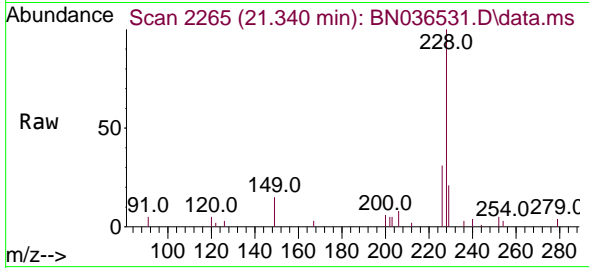




#33  
 Chrysene  
 Concen: 0.471 ng  
 RT: 21.340 min Scan# 21  
 Delta R.T. 0.009 min  
 Lab File: BN036531.D  
 Acq: 05 Mar 2025 19:18

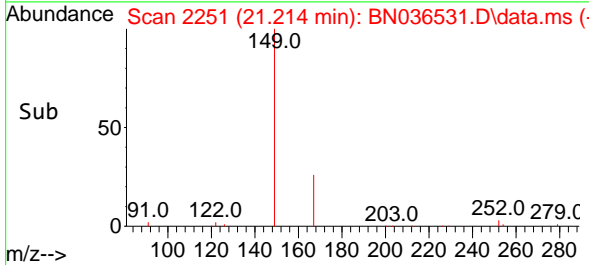
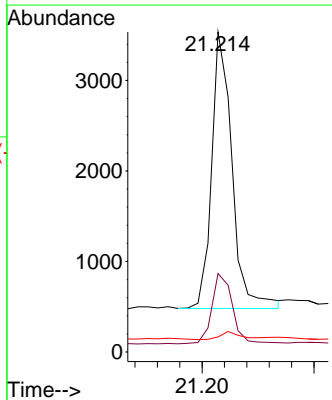
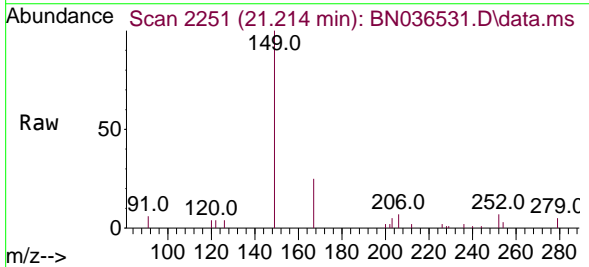
Instrument :  
 BNA\_N  
 ClientSampleId :  
 PB166992BSD

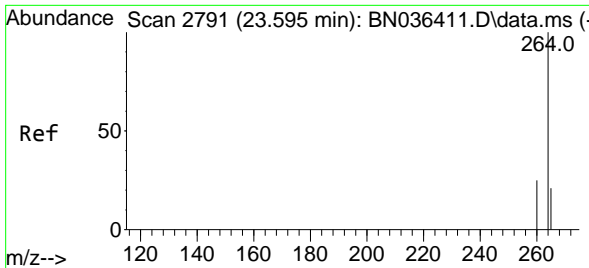
Tgt Ion	Resp	Lower	Upper
228	6883		
226	31.3	25.5	38.3
229	21.2	16.4	24.6



#34  
 Bis(2-ethylhexyl)phthalate  
 Concen: 0.458 ng  
 RT: 21.214 min Scan# 2251  
 Delta R.T. 0.000 min  
 Lab File: BN036531.D  
 Acq: 05 Mar 2025 19:18

Tgt Ion	Resp	Lower	Upper
149	3851		
167	25.8	21.2	31.8
279	2.9	2.7	4.1



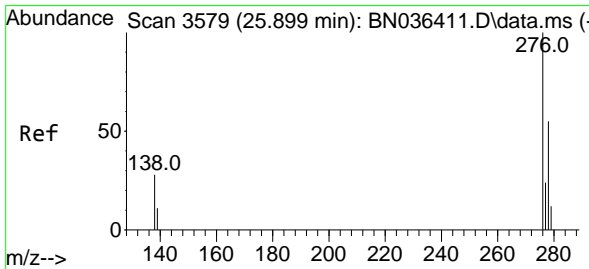
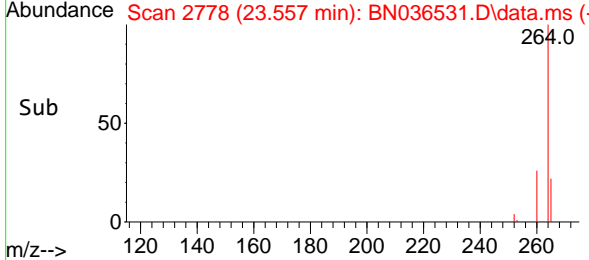
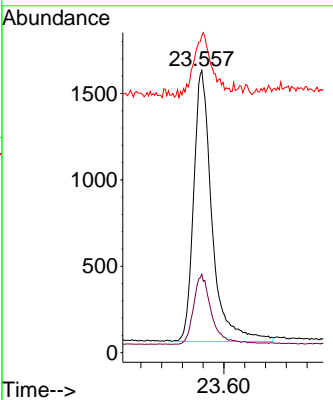
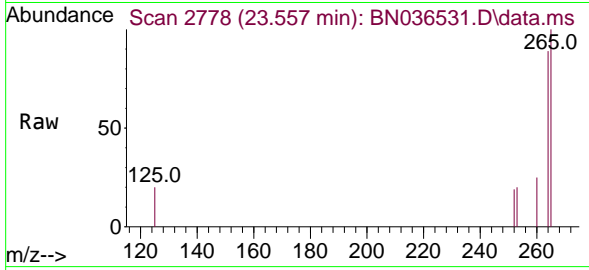


#35  
 Perylene-d12  
 Concen: 0.400 ng  
 RT: 23.557 min Scan# 21  
 Delta R.T. 0.006 min  
 Lab File: BN036531.D  
 Acq: 05 Mar 2025 19:18

Instrument : BNA\_N  
 ClientSampleId : PB166992BSD

Tgt Ion:264 Resp: 3858

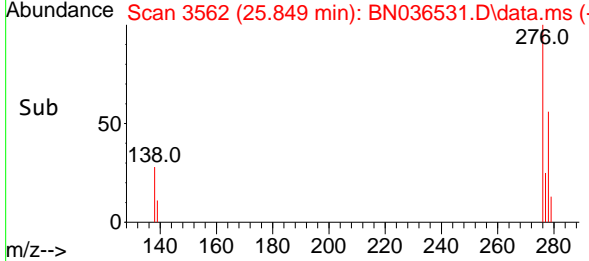
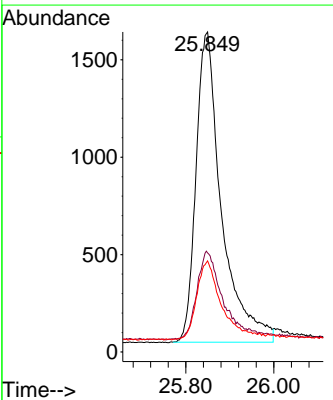
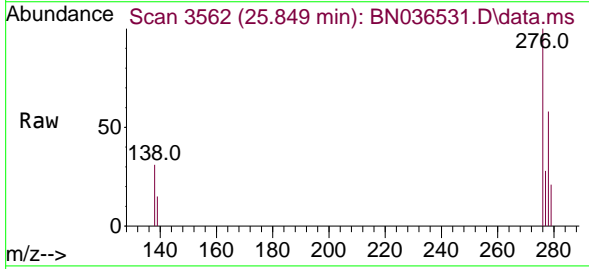
Ion	Ratio	Lower	Upper
264	100		
260	27.7	20.9	31.3
265	112.4	60.7	91.1#

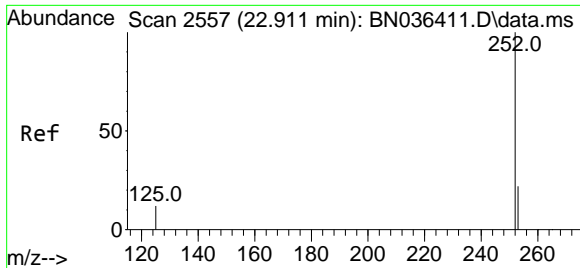


#36  
 Indeno(1,2,3-cd)pyrene  
 Concen: 0.477 ng  
 RT: 25.849 min Scan# 3562  
 Delta R.T. 0.012 min  
 Lab File: BN036531.D  
 Acq: 05 Mar 2025 19:18

Tgt Ion:276 Resp: 6430

Ion	Ratio	Lower	Upper
276	100		
138	28.3	22.2	33.2
277	24.9	19.8	29.6



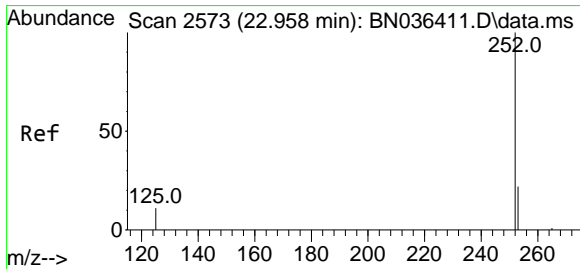
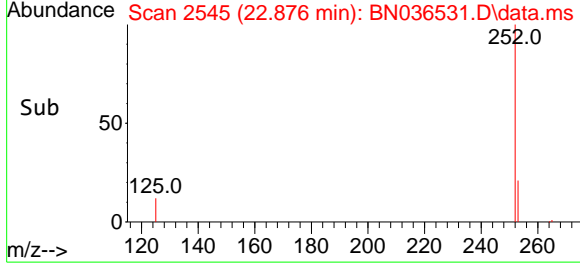
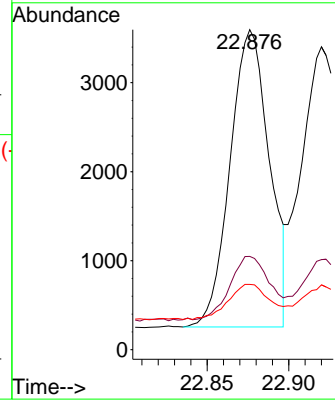
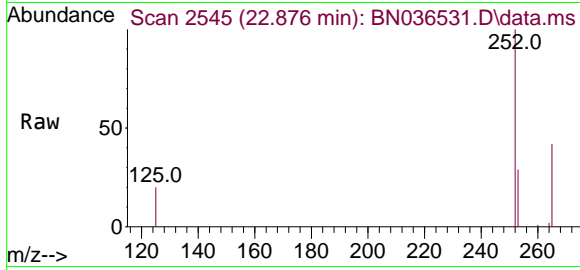


#37  
 Benzo(b)fluoranthene  
 Concen: 0.440 ng  
 RT: 22.876 min Scan# 21  
 Delta R.T. 0.003 min  
 Lab File: BN036531.D  
 Acq: 05 Mar 2025 19:18

Instrument : BNA\_N  
 ClientSampleId : PB166992BSD

Tgt Ion:252 Resp: 5588

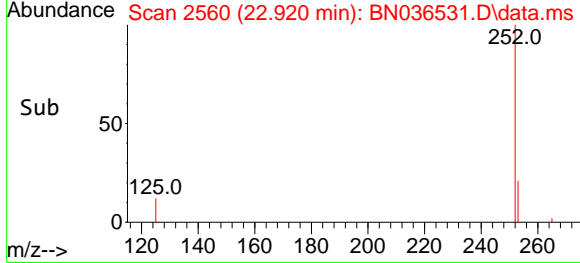
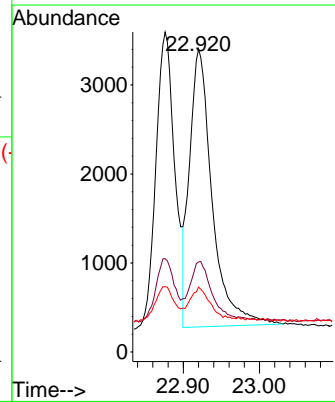
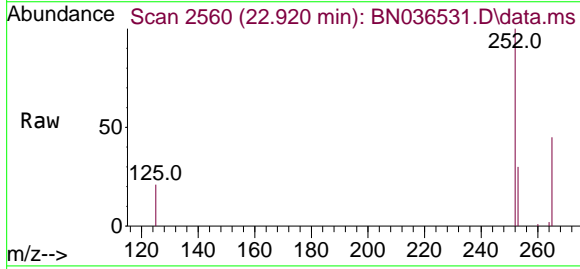
Ion	Ratio	Lower	Upper
252	100		
253	29.1	21.9	32.9
125	20.4	15.0	22.6

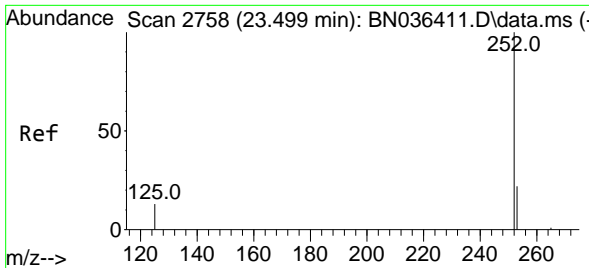


#38  
 Benzo(k)fluoranthene  
 Concen: 0.492 ng  
 RT: 22.920 min Scan# 2560  
 Delta R.T. 0.003 min  
 Lab File: BN036531.D  
 Acq: 05 Mar 2025 19:18

Tgt Ion:252 Resp: 6430

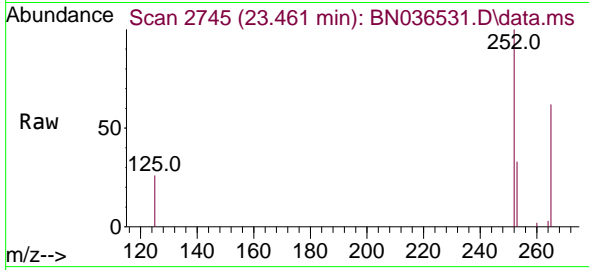
Ion	Ratio	Lower	Upper
252	100		
253	29.8	22.2	33.4
125	21.4	15.0	22.4



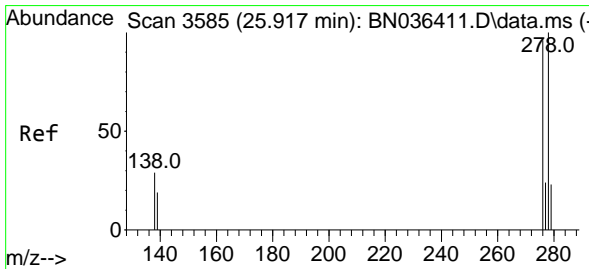
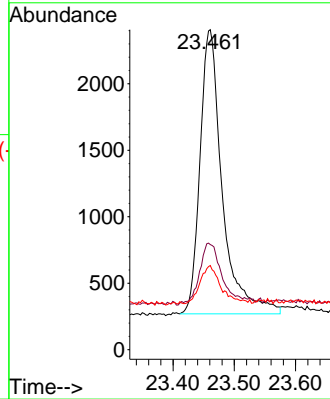
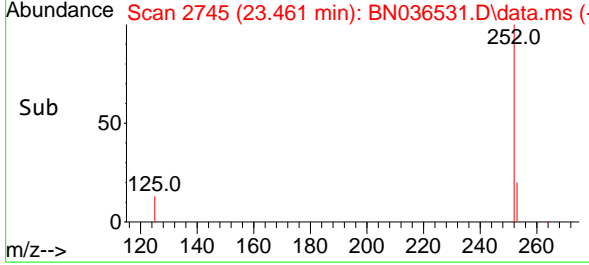


#39  
 Benzo(a)pyrene  
 Concen: 0.487 ng  
 RT: 23.461 min Scan# 21  
 Delta R.T. 0.006 min  
 Lab File: BN036531.D  
 Acq: 05 Mar 2025 19:18

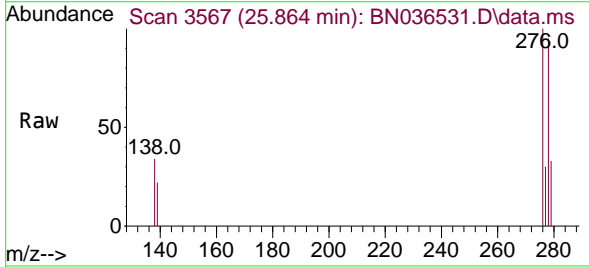
Instrument :  
 BNA\_N  
 ClientSampleId :  
 PB166992BSD



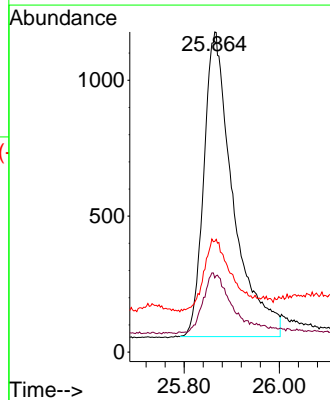
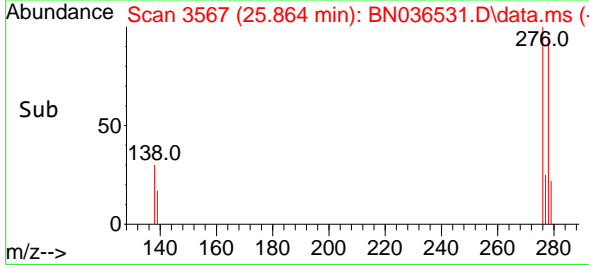
Tgt Ion:252 Resp: 5395  
 Ion Ratio Lower Upper  
 252 100  
 253 32.9 24.4 36.6  
 125 26.3 18.2 27.2

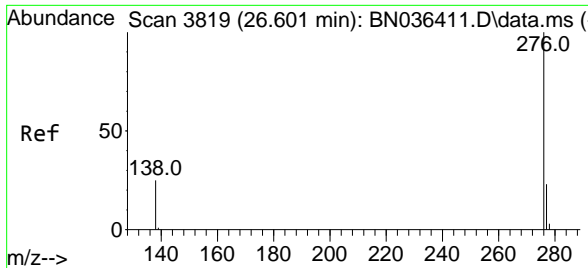


#40  
 Dibenzo(a,h)anthracene  
 Concen: 0.449 ng  
 RT: 25.864 min Scan# 3567  
 Delta R.T. 0.012 min  
 Lab File: BN036531.D  
 Acq: 05 Mar 2025 19:18



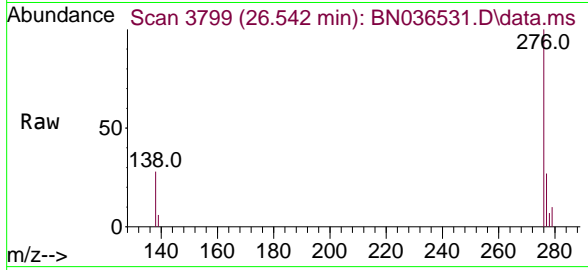
Tgt Ion:278 Resp: 4774  
 Ion Ratio Lower Upper  
 278 100  
 139 23.2 18.5 27.7  
 279 34.6 24.8 37.2





#41  
 Benzo(g,h,i)perylene  
 Concen: 0.443 ng  
 RT: 26.542 min Scan# 31  
 Delta R.T. 0.015 min  
 Lab File: BN036531.D  
 Acq: 05 Mar 2025 19:18

Instrument :  
 BNA\_N  
 ClientSampleId :  
 PB166992BSD



Tgt Ion: 276 Resp: 5348

Ion	Ratio	Lower	Upper
276	100		
277	27.3	20.7	31.1
138	28.3	21.8	32.6

