

Data Path : Z:\pestpcbsrv\HPCHEM1\ECD\_P\Data\PP030425\  
 Data File : PP070242.D  
 Signal(s) : Signal #1: ECD1A.ch Signal #2: ECD2B.ch  
 Acq On : 04 Mar 2025 23:31  
 Operator : YP\AJ  
 Sample : Q1478-05  
 Misc :  
 ALS Vial : 26 Sample Multiplier: 1

**Instrument :**  
 ECD\_P  
**ClientSampleId :**  
 IDW-AQ-IW-02-COMP-022825

Integration File signal 1: autoint1.e  
 Integration File signal 2: autoint2.e  
 Quant Time: Mar 05 00:49:54 2025  
 Quant Method : Z:\pestpcbsrv\HPCHEM1\ECD\_P\methods\PP022425.M  
 Quant Title : GC EXTRACTABLES  
 QLast Update : Tue Feb 25 05:10:19 2025  
 Response via : Initial Calibration  
 Integrator: ChemStation

Volume Inj. : 2 µl  
 Signal #1 Phase : ZB-MR1 Signal #2 Phase: ZB-MR2  
 Signal #1 Info : 30Mx0.32mmx 0.50µ Signal #2 Info : 30M x 0.32mm x 0.25µm

Compound	RT#1	RT#2	Resp#1	Resp#2	ng/ml	ng/ml
-----						
System Monitoring Compounds						
1) SA Tetrachlo...	4.526	3.829	33367974	21112552	22.736	22.083
2) SA Decachlor...	10.250	8.880	19083380	19359147	16.754	17.857

Target Compounds

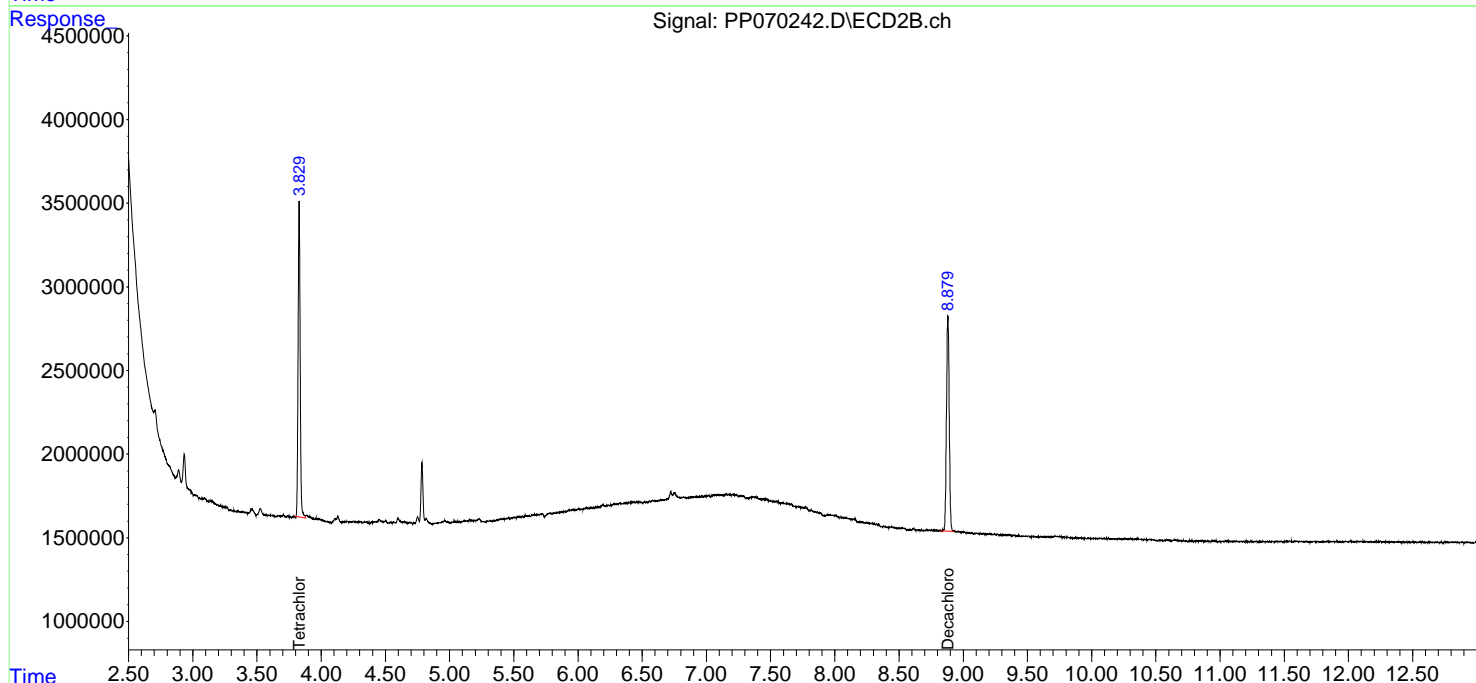
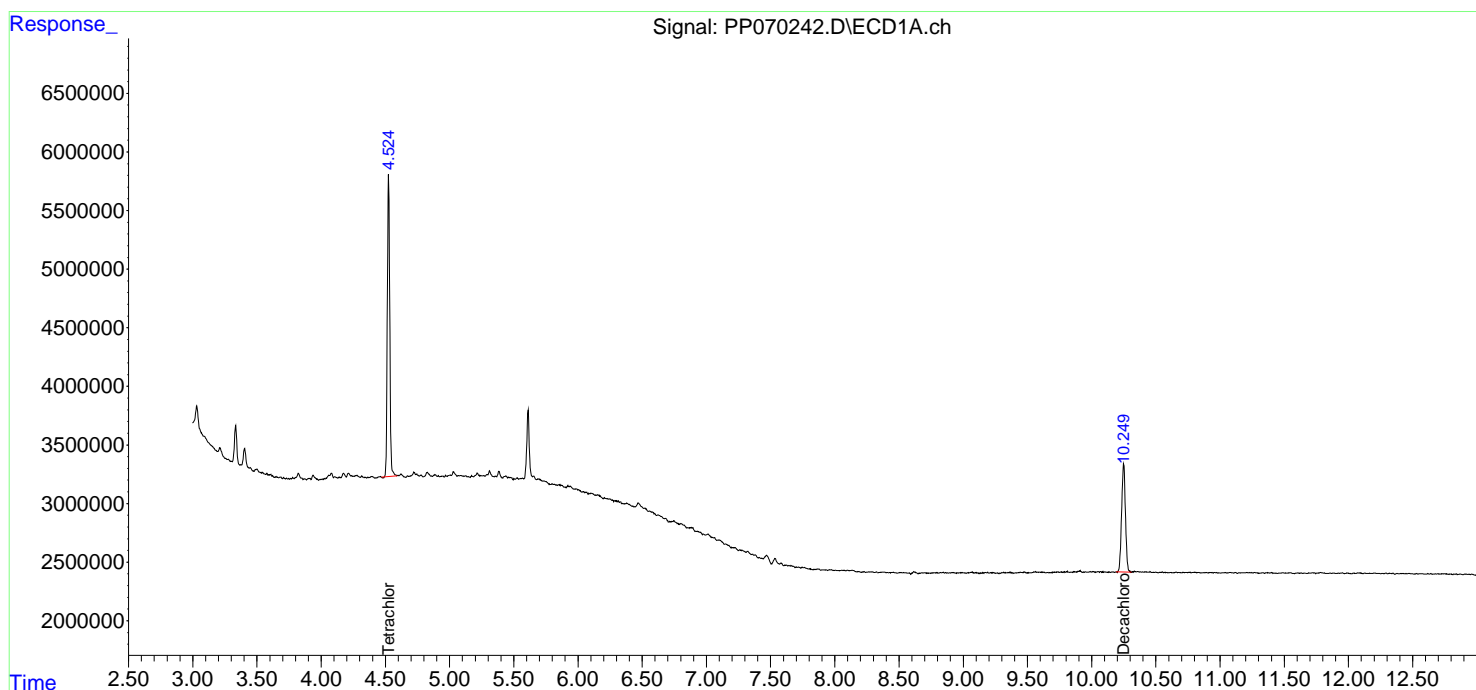
-----  
 (f)=RT Delta > 1/2 Window (#)=Amounts differ by > 25% (m)=manual int.

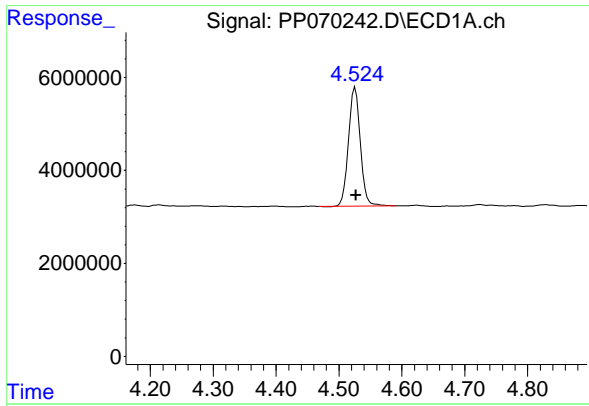
Data Path : Z:\pestpcbsrv\HPCHEM1\ECD\_P\Data\PP030425\  
 Data File : PP070242.D  
 Signal(s) : Signal #1: ECD1A.ch Signal #2: ECD2B.ch  
 Acq On : 04 Mar 2025 23:31  
 Operator : YP\AJ  
 Sample : Q1478-05  
 Misc :  
 ALS Vial : 26 Sample Multiplier: 1

Instrument :  
 ECD\_P  
 ClientSampleId :  
 IDW-AQ-IW-02-COMP-022825

Integration File signal 1: autoint1.e  
 Integration File signal 2: autoint2.e  
 Quant Time: Mar 05 00:49:54 2025  
 Quant Method : Z:\pestpcbsrv\HPCHEM1\ECD\_P\methods\PP022425.M  
 Quant Title : GC EXTRACTABLES  
 QLast Update : Tue Feb 25 05:10:19 2025  
 Response via : Initial Calibration  
 Integrator: ChemStation

Volume Inj. : 2 µl  
 Signal #1 Phase : ZB-MR1 Signal #2 Phase: ZB-MR2  
 Signal #1 Info : 30Mx0.32mmx 0.50µm Signal #2 Info : 30M x 0.32mm x 0.25µm

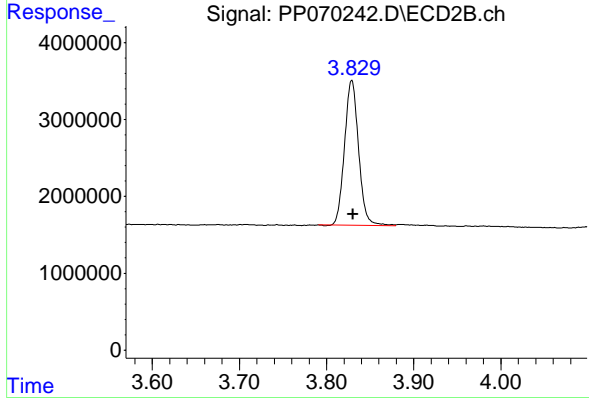




#1 Tetrachloro-m-xylene

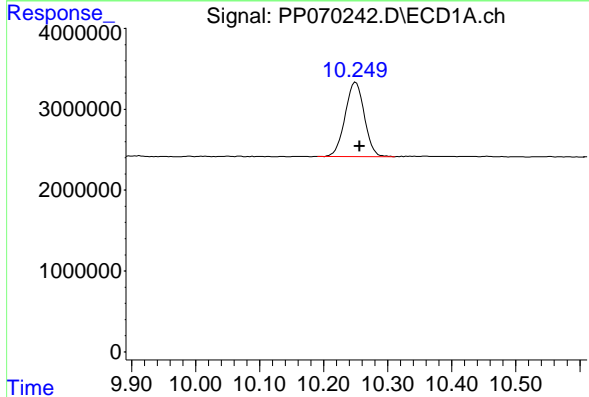
R.T.: 4.526 min  
 Delta R.T.: -0.001 min  
 Response: 33367974  
 Conc: 22.74 ng/ml

Instrument :  
 ECD\_P  
 ClientSampleId :  
 IDW-AQ-IW-02-COMP-022825



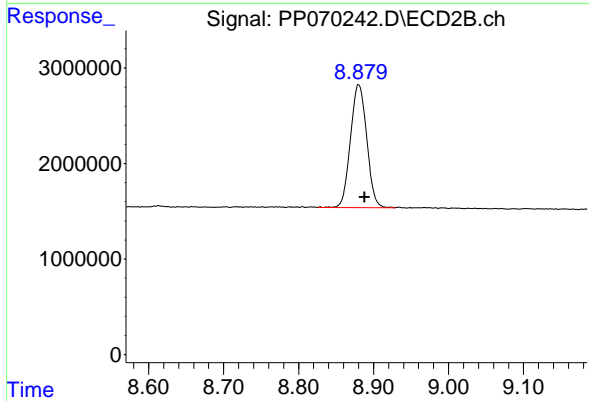
#1 Tetrachloro-m-xylene

R.T.: 3.829 min  
 Delta R.T.: -0.001 min  
 Response: 21112552  
 Conc: 22.08 ng/ml



#2 Decachlorobiphenyl

R.T.: 10.250 min  
 Delta R.T.: -0.006 min  
 Response: 19083380  
 Conc: 16.75 ng/ml



#2 Decachlorobiphenyl

R.T.: 8.880 min  
 Delta R.T.: -0.008 min  
 Response: 19359147  
 Conc: 17.86 ng/ml