

Data Path : Z:\pestpcbsrv\HPCHEM1\ECD_P\Data\PP030525\
 Data File : PP070272.D
 Signal(s) : Signal #1: ECD1A.ch Signal #2: ECD2B.ch
 Acq On : 05 Mar 2025 17:08
 Operator : YP\AJ
 Sample : Q1488-01
 Misc :
 ALS Vial : 15 Sample Multiplier: 1

Instrument :
 ECD_P
 ClientSampleId :
 ENV-101-SB01

Integration File signal 1: autoint1.e
 Integration File signal 2: autoint2.e
 Quant Time: Mar 06 00:25:19 2025
 Quant Method : Z:\pestpcbsrv\HPCHEM1\ECD_P\methods\PP022425.M
 Quant Title : GC EXTRACTABLES
 QLast Update : Tue Feb 25 05:10:19 2025
 Response via : Initial Calibration
 Integrator: ChemStation

Volume Inj. : 2 µl
 Signal #1 Phase : ZB-MR1 Signal #2 Phase: ZB-MR2
 Signal #1 Info : 30Mx0.32mmx 0.50µ Signal #2 Info : 30M x 0.32mm x 0.25µm

Compound	RT#1	RT#2	Resp#1	Resp#2	ng/ml	ng/ml

System Monitoring Compounds						
1) SA Tetrachlo...	4.524	3.829	36727633	24358169	25.025	25.478
2) SA Decachlor...	10.253	8.883	22198318	22475039	19.489	20.731

Target Compounds

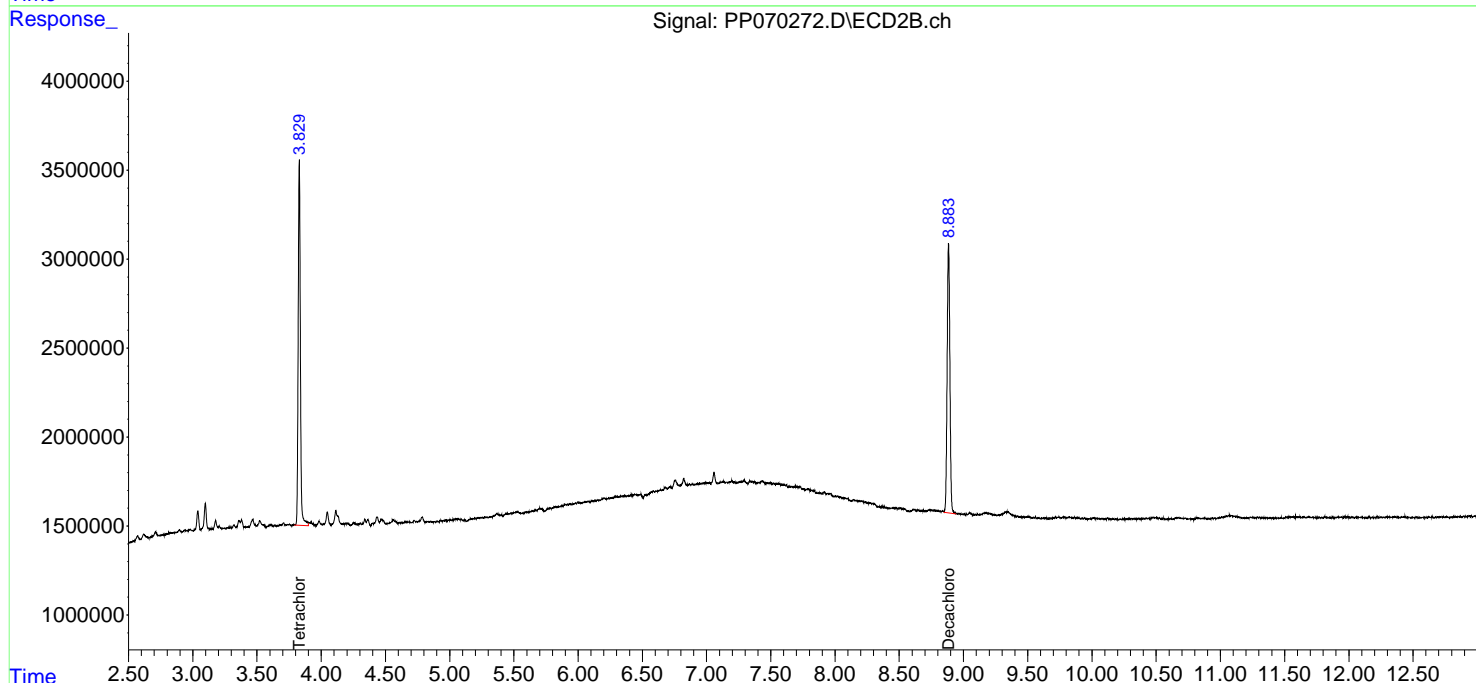
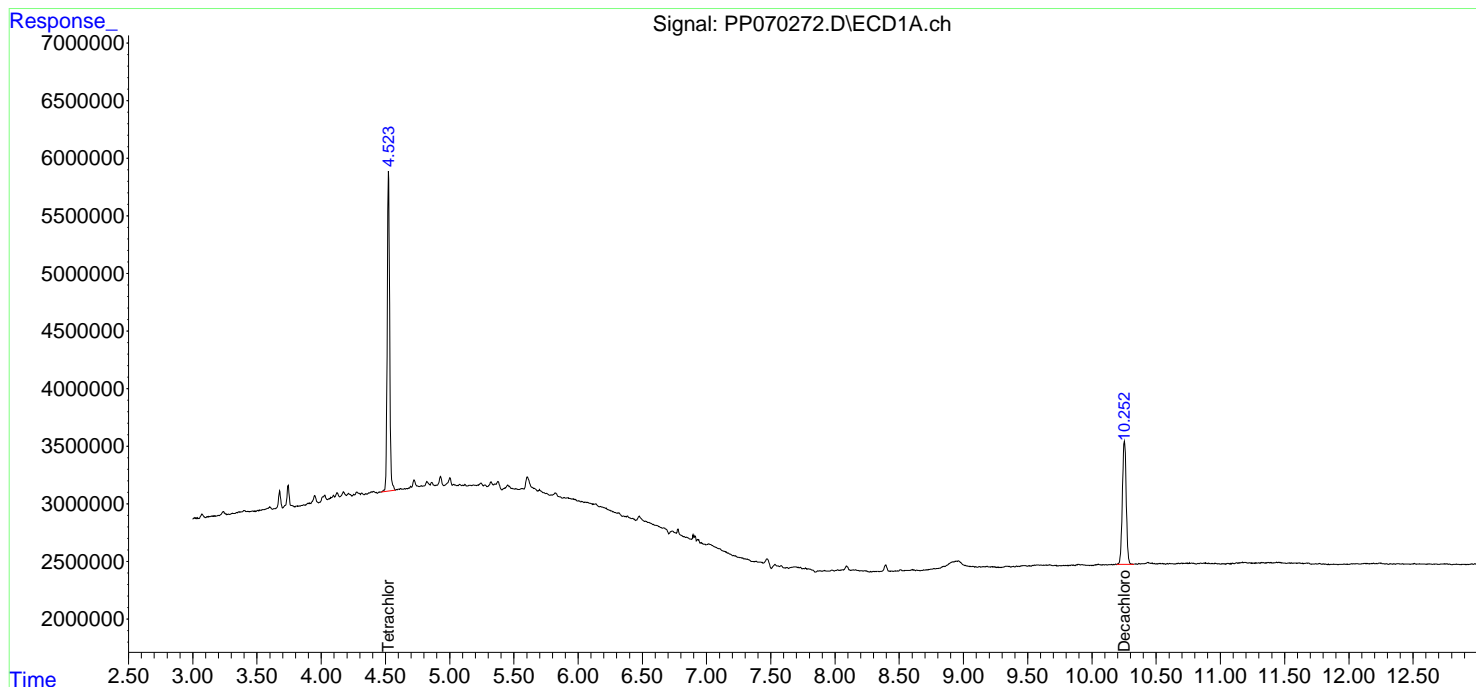
(f)=RT Delta > 1/2 Window (#)=Amounts differ by > 25% (m)=manual int.

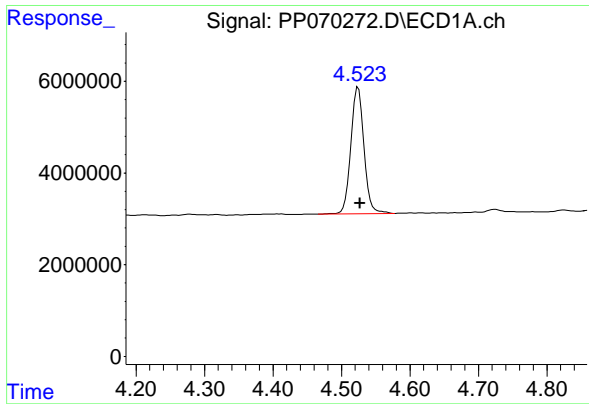
Data Path : Z:\pestpcbsrv\HPCHEM1\ECD_P\Data\PP030525\
Data File : PP070272.D
Signal(s) : Signal #1: ECD1A.ch Signal #2: ECD2B.ch
Acq On : 05 Mar 2025 17:08
Operator : YP\AJ
Sample : Q1488-01
Misc :
ALS Vial : 15 Sample Multiplier: 1

Instrument :
ECD_P
ClientSampleId :
ENV-101-SB01

Integration File signal 1: autoint1.e
Integration File signal 2: autoint2.e
Quant Time: Mar 06 00:25:19 2025
Quant Method : Z:\pestpcbsrv\HPCHEM1\ECD_P\methods\PP022425.M
Quant Title : GC EXTRACTABLES
QLast Update : Tue Feb 25 05:10:19 2025
Response via : Initial Calibration
Integrator: ChemStation

Volume Inj. : 2 µl
Signal #1 Phase : ZB-MR1 Signal #2 Phase: ZB-MR2
Signal #1 Info : 30Mx0.32mmx 0.50µm Signal #2 Info : 30M x 0.32mm x 0.25µm

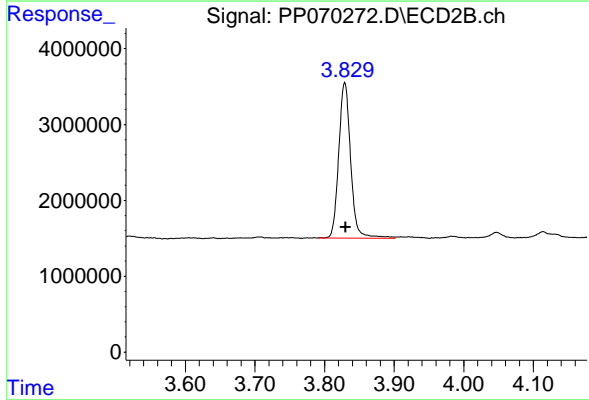




#1 Tetrachloro-m-xylene

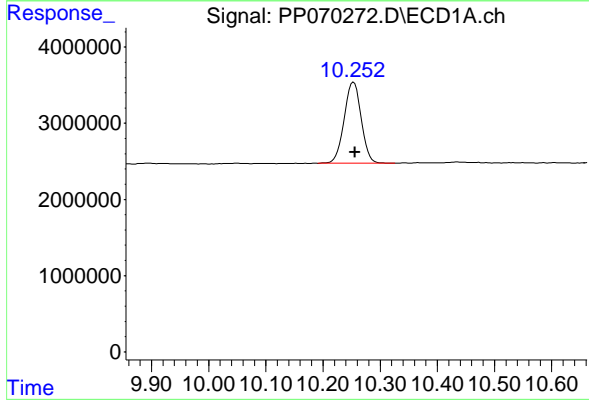
R.T.: 4.524 min
 Delta R.T.: -0.003 min
 Response: 36727633
 Conc: 25.03 ng/ml

Instrument :
 ECD_P
 ClientSampleId :
 ENV-101-SB01



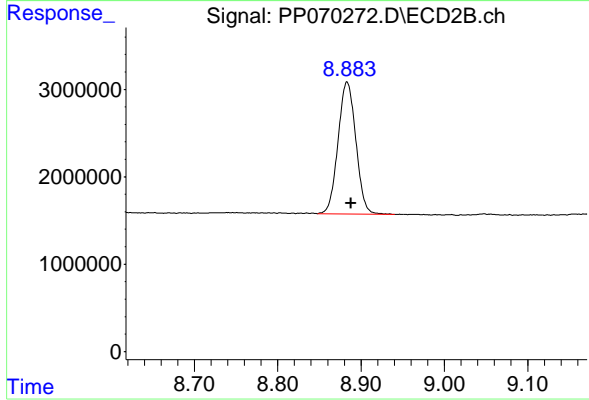
#1 Tetrachloro-m-xylene

R.T.: 3.829 min
 Delta R.T.: -0.001 min
 Response: 24358169
 Conc: 25.48 ng/ml



#2 Decachlorobiphenyl

R.T.: 10.253 min
 Delta R.T.: -0.003 min
 Response: 22198318
 Conc: 19.49 ng/ml



#2 Decachlorobiphenyl

R.T.: 8.883 min
 Delta R.T.: -0.005 min
 Response: 22475039
 Conc: 20.73 ng/ml